

Addendum #1
Invitation to Tender
RFTMA21-4604 – Port Credit Secondary School
Barrier Free Entrances, Alterations 2021

TO: ALL POTENTIAL BIDDERS

This Addendum # 1 has been issued for the above mentioned ITT.

Changes to Bid Document:

See enclosed Addendum No. 1 from the Architect.

Please download Addendum # 1 from Bonfire Bidding System.

All other terms and conditions shall remain the same.

Regards,

John Marinescu, Commodity Specialist, Purchasing
Peel District School Board
Tel. (905) 890-1010 x 2123
Fax. (905) 890-0660
E-mail: john.marinescu@peelsb.com

PORT CREDIT SECONDARY SCHOOL, BARRIER FREE ENTRANCES ALTERATIONS 2021
MISSISSAUGA ON, ONTARIO

MG Architects Inc.
18 Kuhl Avenue
Toronto, Ontario
M9B 5X9

This Addendum forms part of the Bid Documents and is to be read, interpreted and coordinated with all other parts. The cost of all work contained herein is to be included in the bid sum. The Specifications and Drawings are complementary. Items listed under the Specifications in this Addendum and having influence on the Drawings are so deemed to alter the Drawings. Items listed under the Drawings in the Addendum and having influence on the Specifications are so deemed to alter the Specifications.

This Addendum contains the following:

- 1 typewritten page
- Drawing A3 Revised
- Mechanical addendum M1 – 2 pages
- Electrical addendum E1 – 2 pages

SPECIFICATIONS**Hazardous Materials Survey**

- The survey has been included in the specification twice. Disregard the first document that follows Section 00 31 19

ARCHITECTURAL DRAWINGS**Drawing A3 West Entrance**

- Revised drawing is reissued with added underground services information.

END

KEY TO DETAIL LOCATION	
No.	DETAIL NUMBER
No.	DRAFTING NUMBER

CONTRACTORS MUST CHECK AND VERIFY ALL DIMENSIONS ON THE JOB AND REPORT ANY DISCREPANCIES TO THE ARCHITECT BEFORE PROCEEDING WITH THE WORK.

ALL PRINTS AND SPECIFICATIONS ARE THE PROPERTY OF THE ARCHITECT AND MUST BE RETURNED AT THE COMPLETION OF THE WORK.

DRAWINGS SHOULD NOT BE SCALED.

NO	REVISION / ISSUE	DATE
1	ISSUED FOR BUILDING PERMIT	07 JUN 2021
2	ISSUED FOR TENDER	07 JUN 2021
3	ISSUED WITH ADDENDUM NO.1	17 JUNE 2021

CONSULTANTS:

ARCHITECTURAL
MG ARCHITECTS INC.
18 KUHL AVENUE
TORONTO, ONTARIO M9B 5X9
PHONE: 416-239-1933

STRUCTURAL
RAVENS ENGINEERING INC.
1061 EGLINTON AVE. WEST, SUITE 201
TORONTO, ONTARIO M6C 2C9
PHONE: 416-782-1644

MECHANICAL / ELECTRICAL:
ELLARD-WILLSON ENGINEERING LTD
260 TOWN CENTRE BLVD. #202
MARKHAM, ONTARIO L3R 8H8
PHONE: 905-940-3100

peel District School Board
5650 Hurontario Street, Mississauga, Ont. L5R 1C6
Tel: (905) 890-1099, Fax (905) 890-9453

CONSTRUCTION NORTH
ONTARIO ASSOCIATION OF ARCHITECTS
MARIJESZ GONCARTZ
LICENCE 4879

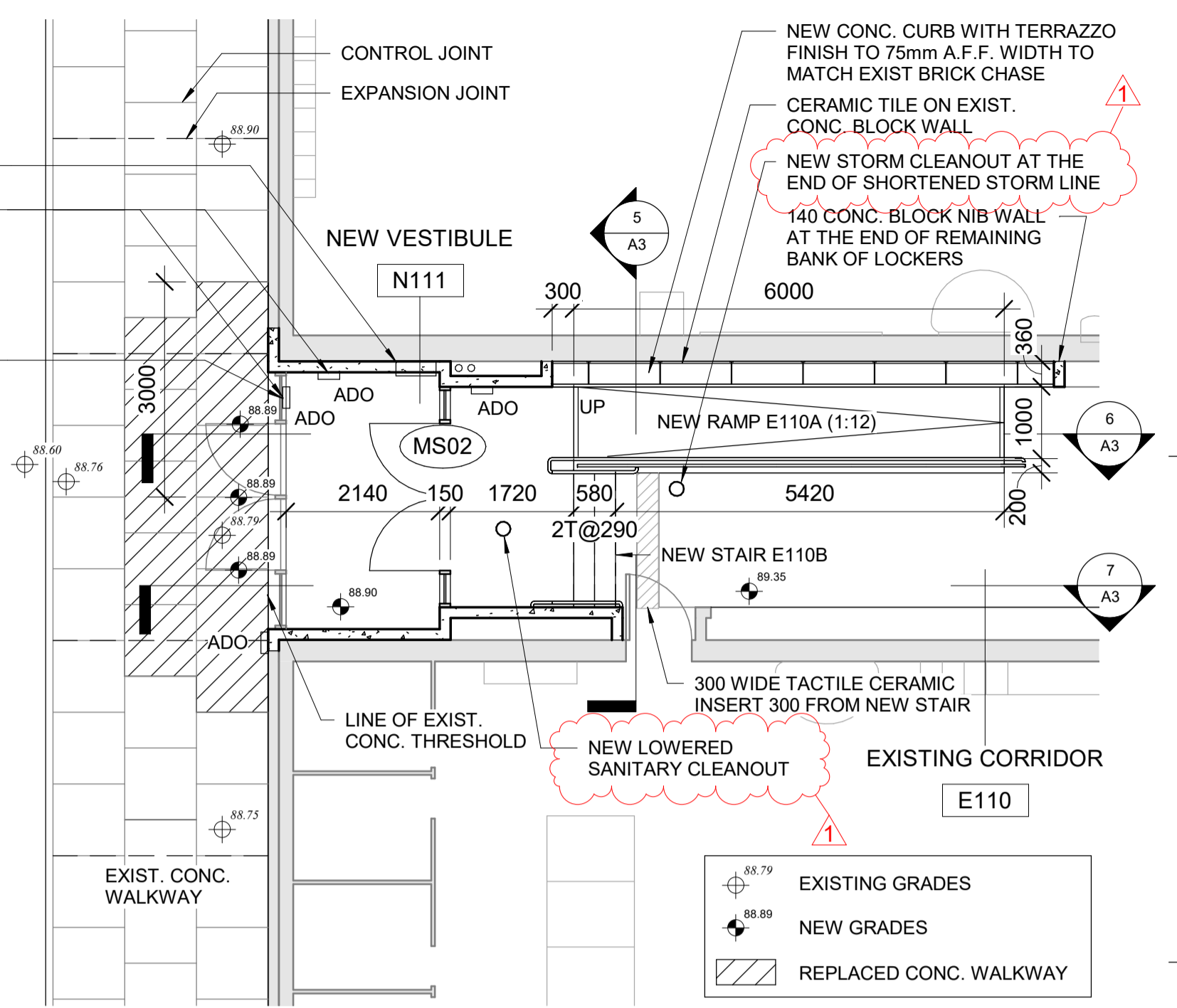
MG Architects Inc.
18 Kuhl Ave
Toronto, Ontario M5B 5X9
Canada
T/F 416-239-1933

DRAWN BY: **AG**
CHECKED BY: **MG**
DATE: **JUNE 2021**

PROJECT TITLE:
**PORT CREDIT SECONDARY SCHOOL
BARRIER FREE ENTRANCES
ALTERATIONS 2021**

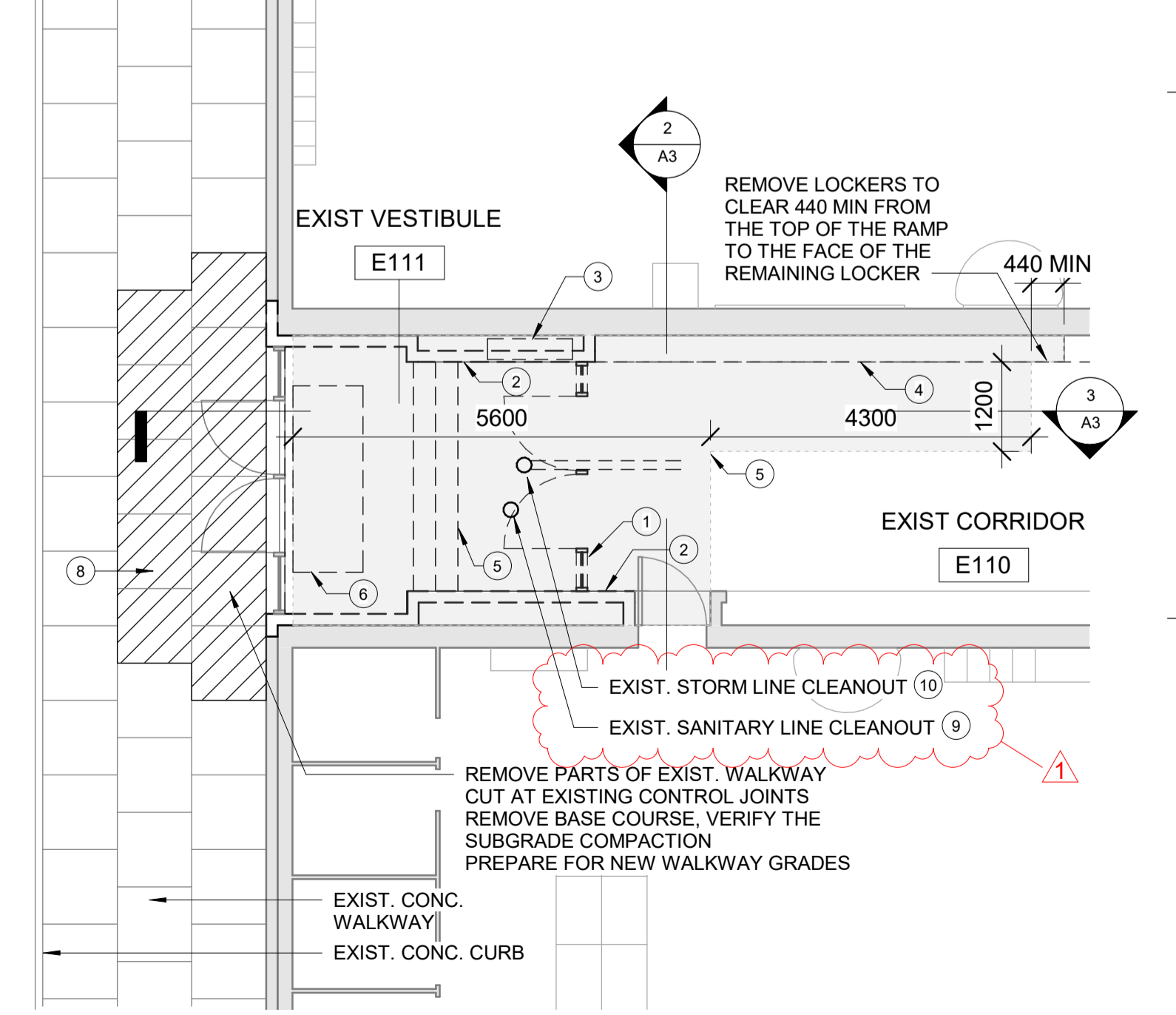
MISSISSAGUA
DRAWING TITLE:
WEST ENTRANCE

PROJECT NO. **1902** DWG. NO. **A3**

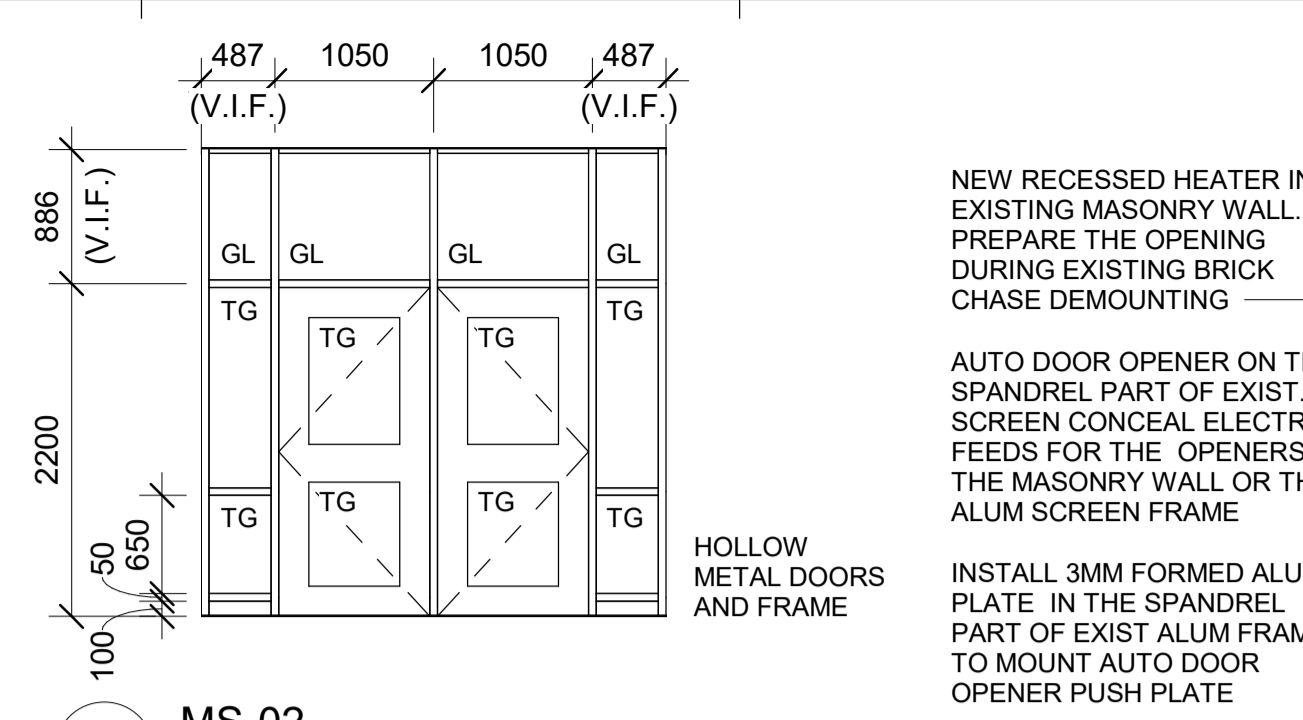


4 NEW CONSTRUCTION PLAN (WEST)
1:75

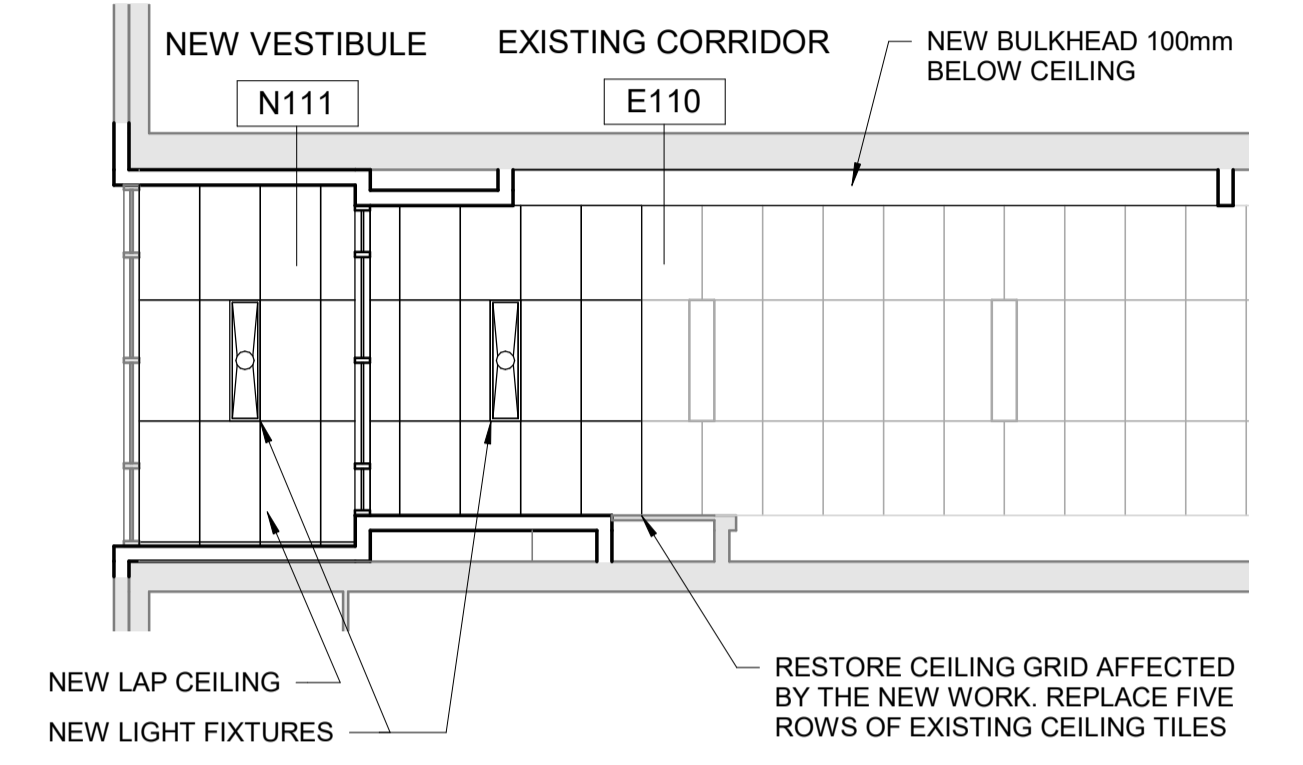
DEMOLITION NOTES (A3)	
1	REMOVE EXISTING EXISTING HM DOORS AND FRAME AND GYP. BOARD BULKHEAD ABOVE
2	REMOVE BRICK CHASE WALLS ON BOTH SIDES OF THE VESTIBULE. SALVAGE THE BRICK, ESPECIALLY CORNER UNITS WITH BULLNOSES.
3	REMOVE EXISTING RECESSED HEATER, SEE MECHANICAL DRAWINGS FOR RELOCATION NOTES
4	REMOVE METAL LOCKERS & LOCKER BULKHEADS TO CLEAR 8150mm FROM TOP OF EXISTING STAIR
5	REMOVE EXISTING CONCRETE STAIR AND PARTS OF THE CONCRETE SLAB FULL WIDTH OF THE CORRIDOR, CUT AND REMOVE PARTS OF CONCRETE SLAB AREA OF CUT AS SHOWN
6	REMOVE CERAMIC TILE INFILL OF FORMER SINK MAT AND TERRAZZO AT THE LOWER LEVEL OF VESTIBULE
7	REMOVE PARTS OF EXISTING LAP CEILING
8	REMOVE PARTS OF EXIST. WALKWAY
9	REMOVE EXIST SANITARY LINE CLEANOUT, LOWER CLEANOUT ELEVATION TO NEW FLOOR LEVEL, INSTALL NEW CLEANOUT FOR TERRAZZO FLOOR
10	REMOVE EXIST STORM LINE CLEANOUT. REMOVE THE END OF EXIST 250 DIA STORM LINE TO THE TOP OF NEW STAIR. COORDINATE FLOOR CUT AND REMOVAL WITH THE NEW WORK



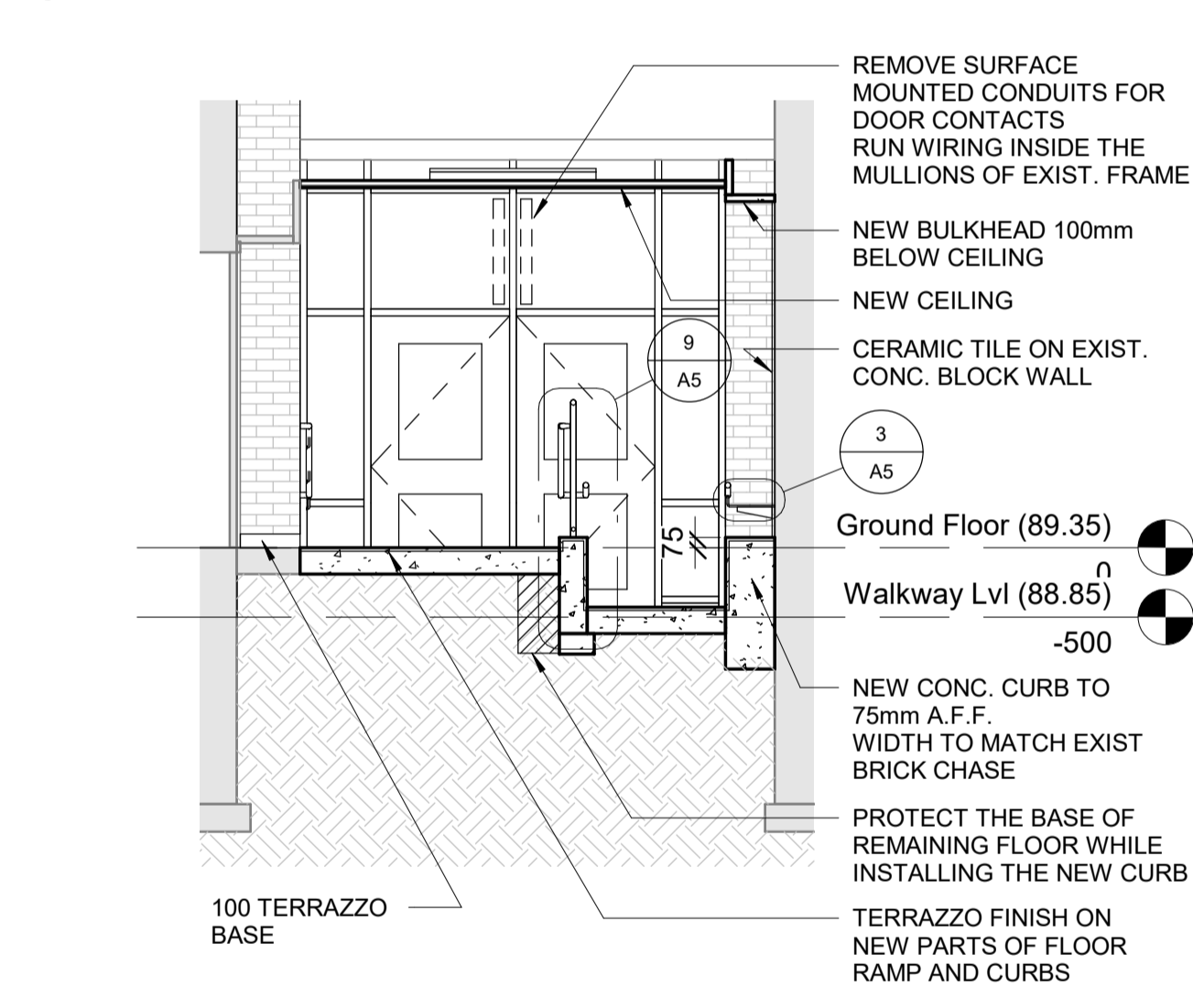
1 DEMOLITION PLAN (WEST)
1:75



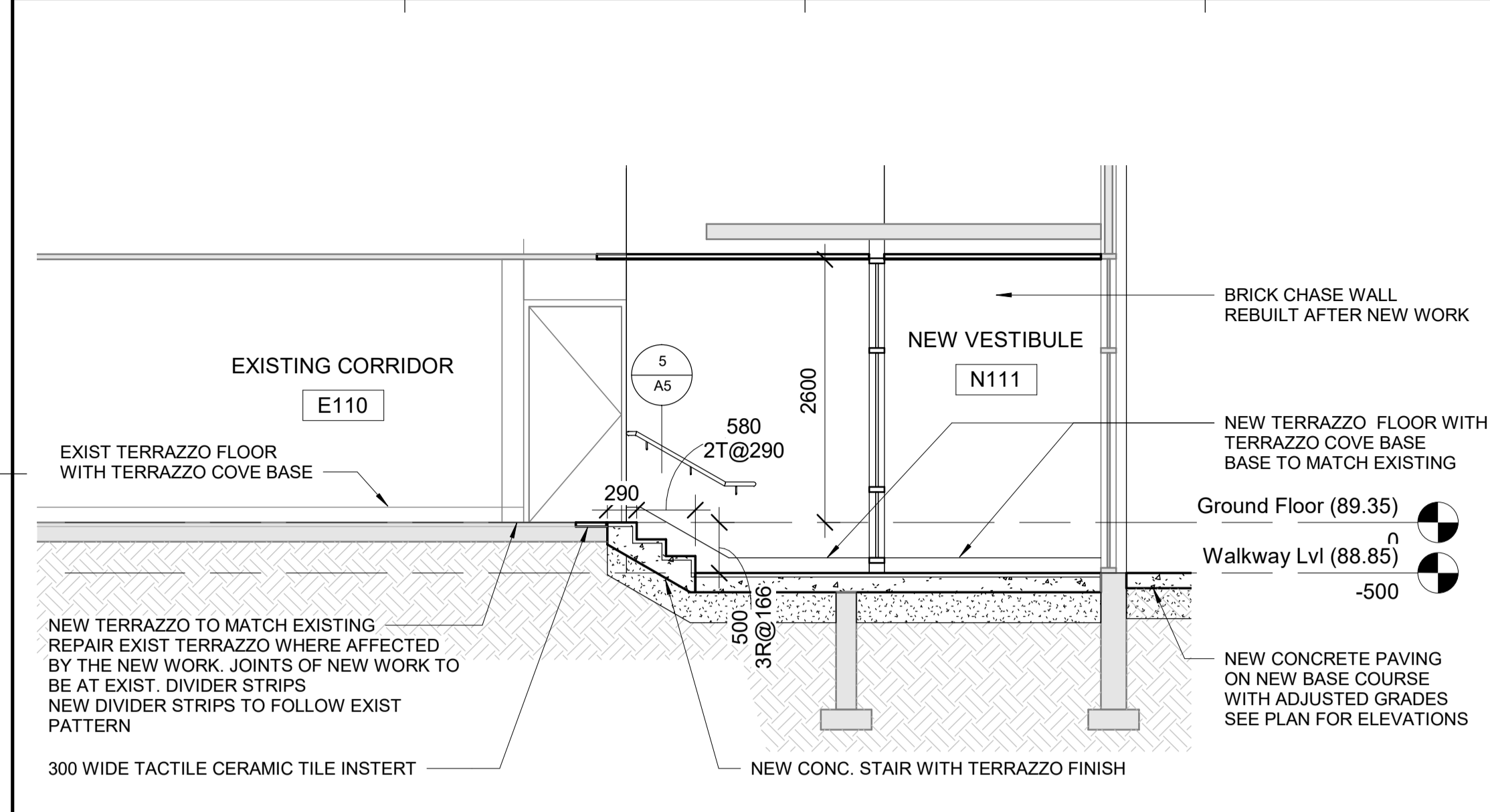
8 REFLECTED CEILING PLAN (WEST)
1:75



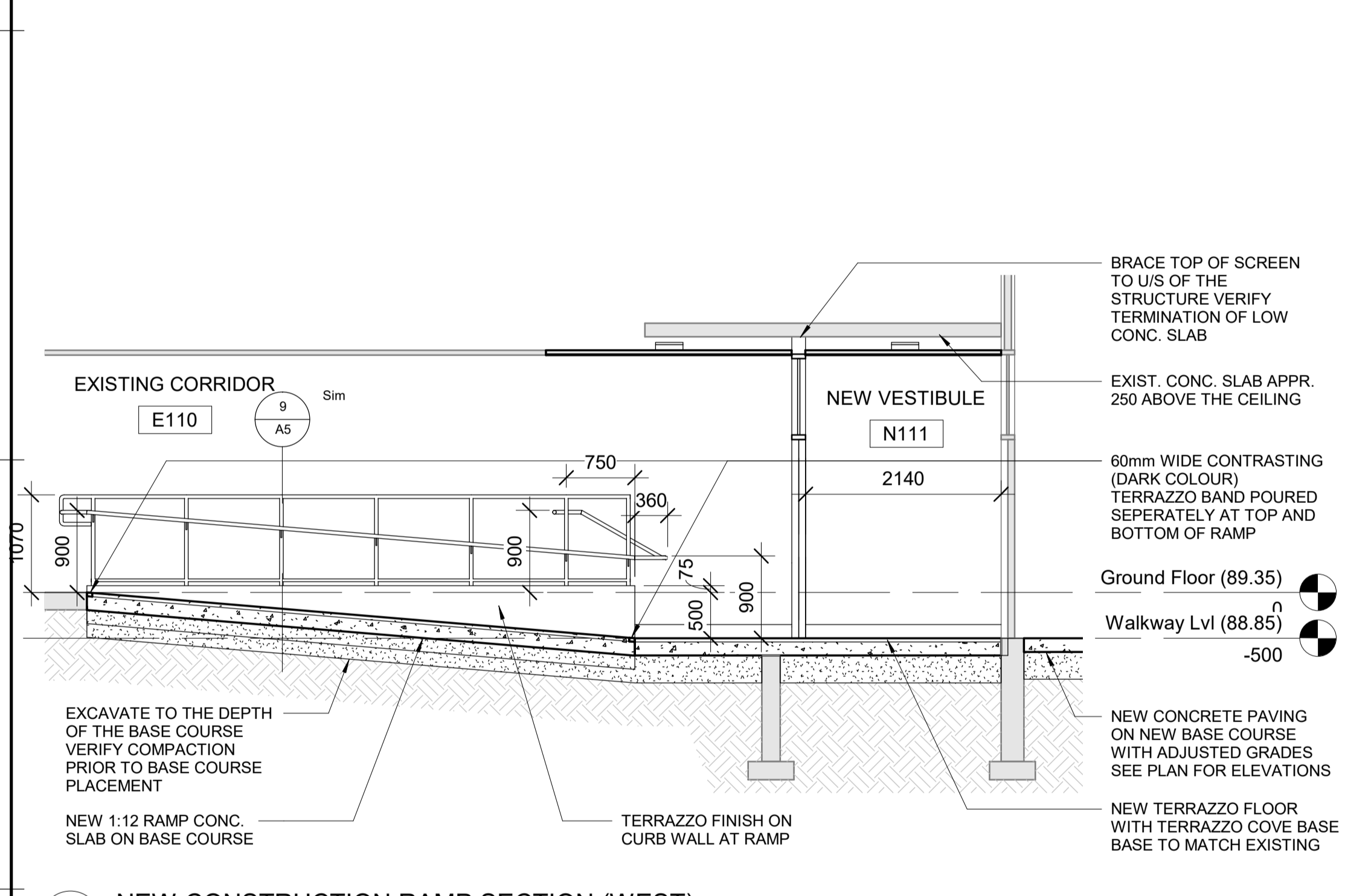
5 NEW CONSTRUCTION CROSS-SECTION (WEST)
1:50



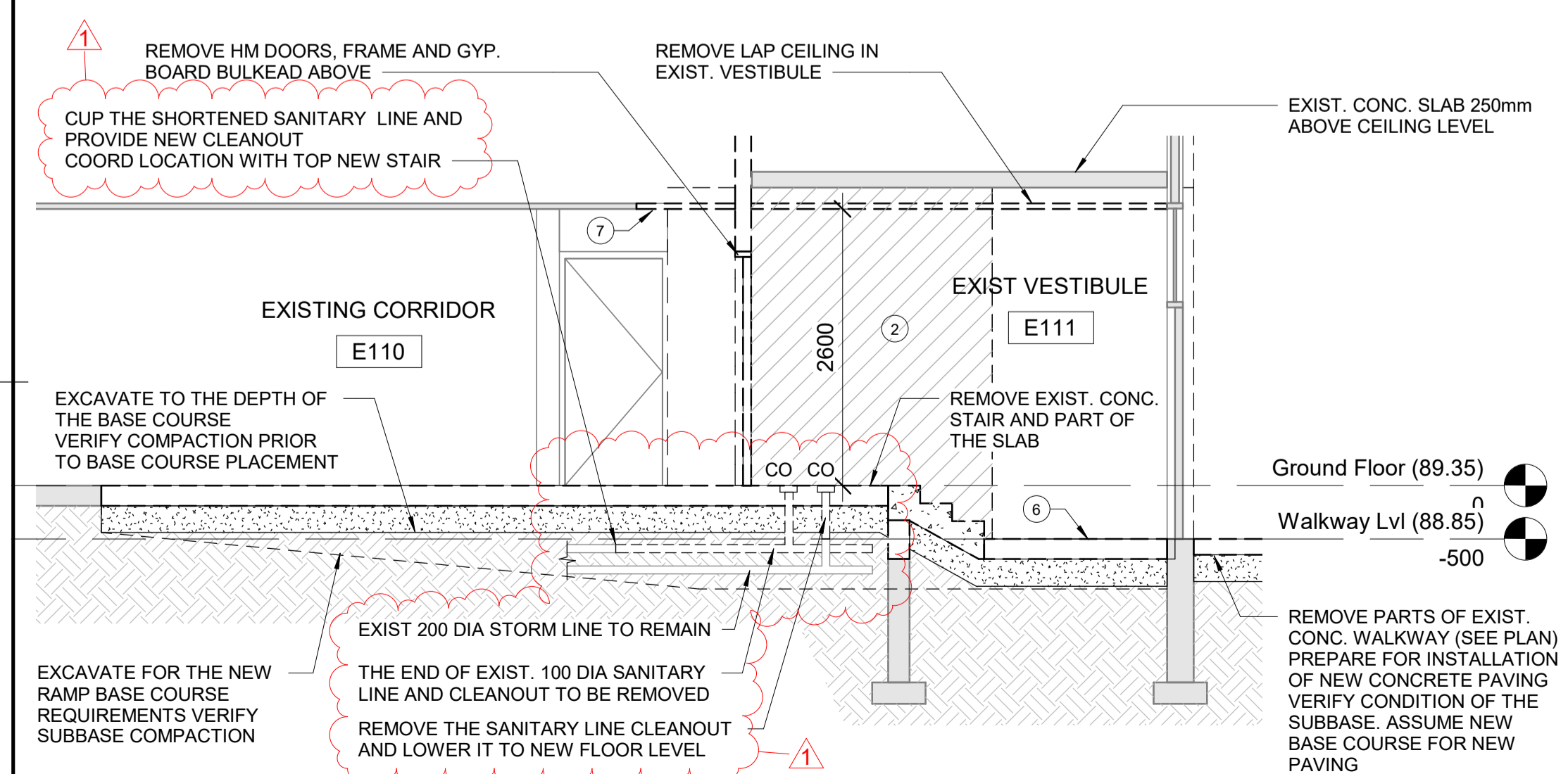
2 DEMOLITION CROSS-SECTION (WEST)
1:50



7 NEW CONSTRUCTION STAIR SECTION (WEST)
1:50



6 NEW CONSTRUCTION RAMP SECTION (WEST)
1:50



3 DEMOLITION SECTION (WEST)
1:50

MECHANICAL ADDENDUM NO. M-1

The following additions, deletions, amendments and/or items of clarification are hereby made an integral part of the Tender Documents. All revisions shall be made to the drawings and/or specifications and all costs for same shall be included in the Stipulated Price.

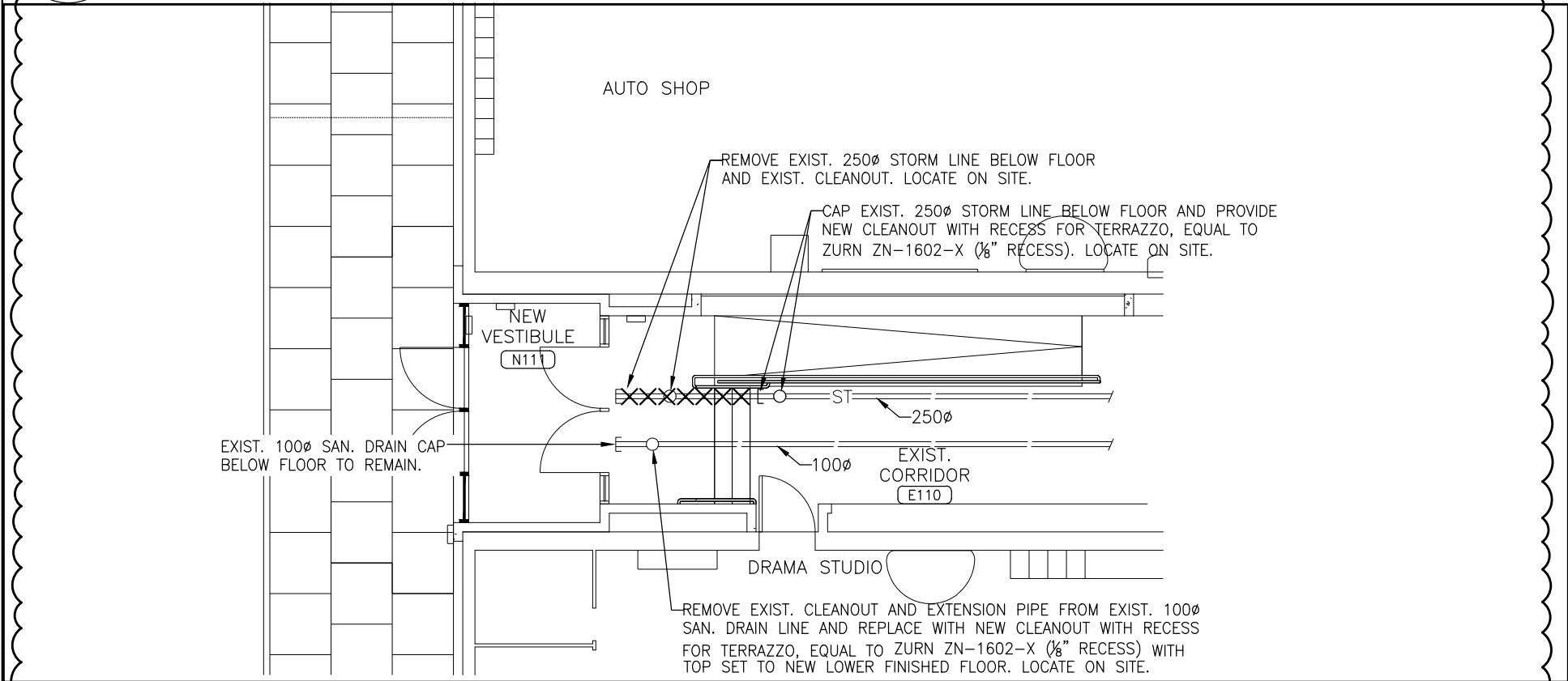
CHANGES TO DRAWINGS

1. Drawing M2, Rev. #1 (Sketch SKM2-1-1 Issued)

- .1 New Part plan 6/M2 Added: Remove existing underfloor sanitary drain line cleanout and remove existing underfloor storm drain line and cleanout and cap for future connection as shown on attached sketch

END OF MECHANICAL ADDENDUM M-1

1



6 PLUMBING & DRAINAGE – PARTIAL GROUND FLOOR (WEST ENTRANCE)
 M2 SCALE: 1:100

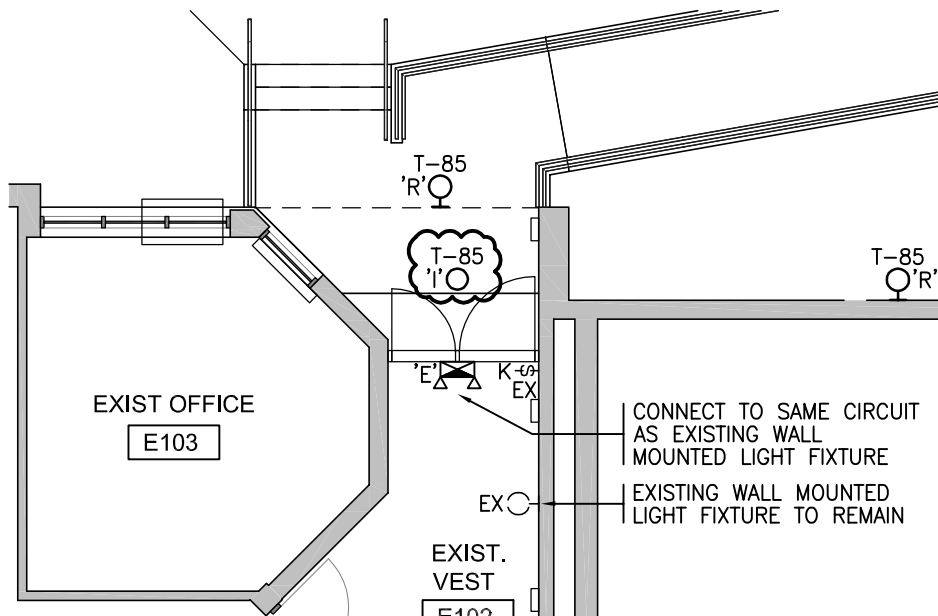
<p>ELLARD-WILLSON ENGINEERING LTD 260 TOWN CENTRE BLVD., SUITE 202 MARKHAM ONTARIO L3R-8H8 T:(905)940-3100 F:(905)940-2139</p>	<p>peel District School Board 5650 Hurontario Street, Mississauga, Ont., L5R 1C6 Tel: (905) 890-1099, Fax: (905) 890-9453</p>	DWG. TITLE: PORT CREDIT SECONDARY SCHOOL BARRIER FREE ENTRANCES ALTERATIONS 2021 70 MINEOLA RD., EAST, MISS., ONT., L5G 2E5		DRAWN BY: L.D.	SCALE: 1:100	PROJECT NO.: 1902
		HVAC, PLUMBING & DRAINAGE- PART NEW GROUND FLOOR PLANS		CHECKED BY: S.G.	DATE: JUN. 17/21	DWG NO.: SKM2-1-1

The following additions, deletions, amendments and/or items of clarification form an integral part of the Tender Documents.

CHANGES TO DRAWINGS

1. Coordinate exact location of outlet boxes for Handicapped pushbuttons, lights, receptacles, etc. with Consultant and Architectural drawings before rough-ins.
2. **Drawing E3 (Sketch issued)**
- 2.1 Detail 1, Part Ground Floor (North Library Entrance)
 - Provide one (1) light fixture type 'I' and connect to existing circuit as shown on attached sketch ESK-1. Coordinate exact location with Architect before rough-ins.
3. **Drawing E6 (Sketch issued)**
- 3.1 Item #37, Lighting Fixture Schedule
 - Add light fixture type 'I' specifications as per attached sketch ESK-1.

END OF ELECTRICAL ADDENDUM E1



37. LIGHTING FIXTURE SCHEDULE

.1 THE FIXTURES WITH THE INSCRIBED LETTER SHALL BE OF THE TYPES AS DESCRIBED BELOW:

TYPE 'A' SHALL BE SIMILAR TO LITHONIA LIGHTING CAT. #BLT4-40L-ADP-120-EZ1-LP840, 1'-0" X 4'-0" RECESSED LED LIGHT FIXTURE FOR T-BAR CEILING MOUNTING, COMPLETE WITH HIGH REFLECTIVE MATTE WHITE POWDER PAINT FINISH, CURVED LINEAR PRISMATIC LENS AND 120 VOLT INTEGRAL DRIVER AND LED STRIPS. SHALL BE COMPLETE WITH BUILT-IN OCCUPANCY SENSOR WITH DIMMING CONTROL TO PROVIDE A 50% DIM LEVEL DURING VACANCY AND 100% IN OCCUPANCY. PHOTOCELL TO BE DISABLED.

TYPE '1' SHALL BE SIMILAR TO PRESCOLITE LIGHTING CAT. #LF6SL-DM1-6LFSL-15L40K8SSVR-B6/ICBOX (vandal resistant, IC rated), 6" LED VANDAL RESISTANT ARCHITECTURAL DOWNLIGHT COMPLETE WITH VANDAL GUARD. PRECISION DIE STAMPED GALVANIZED STEEL MOUNTING PAN HOUSING, DIE CAST ALUMINUM HEAT SINK WITH 120 VOLT INPUT VOLTAGE AND 120 VOLT INTEGRAL WEATHERTIGHT LED DRIVER COMPARTMENTS.

ELLARD-WILLSON
ENGINEERING LTD.
 260 TOWN CENTRE BLVD., SUITE 202
 MARKHAM ONTARIO L3R-8H8
 T:(905)940-3100 F:(905) 940-2139

peel
 District
 School Board

Drawing Title:
PORT CREDIT SEC. SCH.
B.F. ENTRANCES ALT.2021
 LIGHTING LAYOUT
 PART OF DRAWINGS E3 & E6)

Drawn By: R.R.	Checked By: R.R.	Scale: 1:100	Proj. No: 1501
E-W Proj. No: 21104		DATE: JUN.14'21	Checked By: ESK-1