

Addendum 1

Request for Quotation

MA22- 4778

Winston Churchill Windows Replacement

TO: ALL POTENTIAL BIDDERS

This Addendum 1 has been issued for the above mentioned RFQ.

Please see attached consultant's Addendum No. 1 with answers to questions from bidders, as well as clarifications.

All other terms and conditions shall remain the same.

Regards,

John Marinescu, Commodity Specialist
Peel District School Board
Tel. (905) 890.1010 x 2123
Fax. (905) 890-0660
E-mail: john.marinescu@peelsb.com

Addendum No. 1

To: All Bidders

Project: 2022 Window Replacement – Sir Winston Churchill PS
9 Ardglen Drive
Brampton, ON, L6W 1V1

Date of Issue: July 4, 2022

Reference: SG-555-21/22

All Bidders are hereby notified of the following changes and clarifications to the Bid Documents made by this Addendum, which has been issued by Pretium prior to Bid Closing. Acknowledge receipt of all Addenda on Bid Form where indicated and submit signed copy in Bid.

1. Questions from Bidder:

1. **Q:** "There is a lead-containing grey paint around the windows on metal and plaster paneling. Does lead abatement contractor responsible for lead abatement only or removal of the windows as well?"

A: The lead-containing grey paint is only on the plaster panel and the metal panel on top of the window but not on the actual window. The actual lead abatement depends on the extent of materials that will need to be removed as part of the window replacement.

The workers working on the window replacement should have basic lead and asbestos awareness training. The contractors must follow the procedures/protocols outlined in the technical specifications document as well as their own health and safety procedures to protect themselves and the surrounding environment.

2. **Q:** "Disposal of waste: Are we supposed to dispose whole waste including windows as lead abatement waste?"

A: No, the entire window does not need to be disposed of as lead waste, only the surfaces that have lead containing paints. Based on visual inspections during the Site visits, the windows are not painted grey (only anodized). The grey paints are present only on plaster finishes and decorative metal finishes. Metal surfaces can be taken to a recycling centre as per the Technical Specification Documents. Plaster surfaces need to be taken to an appropriate hazardous waste facility. Peritus, the Environmental Consultant for this project, can conduct a TCLP analysis on lead containing materials other than metal, if required for waste facilities.

3. **Q:** "Type of Lead abatement: Are we supposed to remove as type 1 removal process or type 2A removal process?"

A: This depends on the extent of material to be removed and the contractor's own policies and procedures. If only small portions of the plaster and metal panels are going to be removed, then a Type 1 removal process should be sufficient, as long as the contractor uses adequate dust control measures. If the contractor plans to scrape the paint off the material onsite, then more precautions will be necessary. The environmental consultant will review the proposed method by the contractor prior to commencement of work.

2. Clarifications:

- Per Section 01 11 00 – Scope of Work, Line Item 2.1.12: Anywhere there are existing wood sills that extend or are continuous between windows, new Corian sills are to be provided. Where existing wood sills are provided at individual windows, new Corian sills are to be provide only for the depth and width of that individual window.
- Per Section 01 11 00 – Scope of Work, Line Item 2.1.16: for Window W1, new engineered metal railings are to be provided similarly to the railing shown below in Figure 1. It is to satisfy current requirements of the O.B.C. Engineered stamped shop drawings are to be submitted to Consultant for review prior to fabrication.

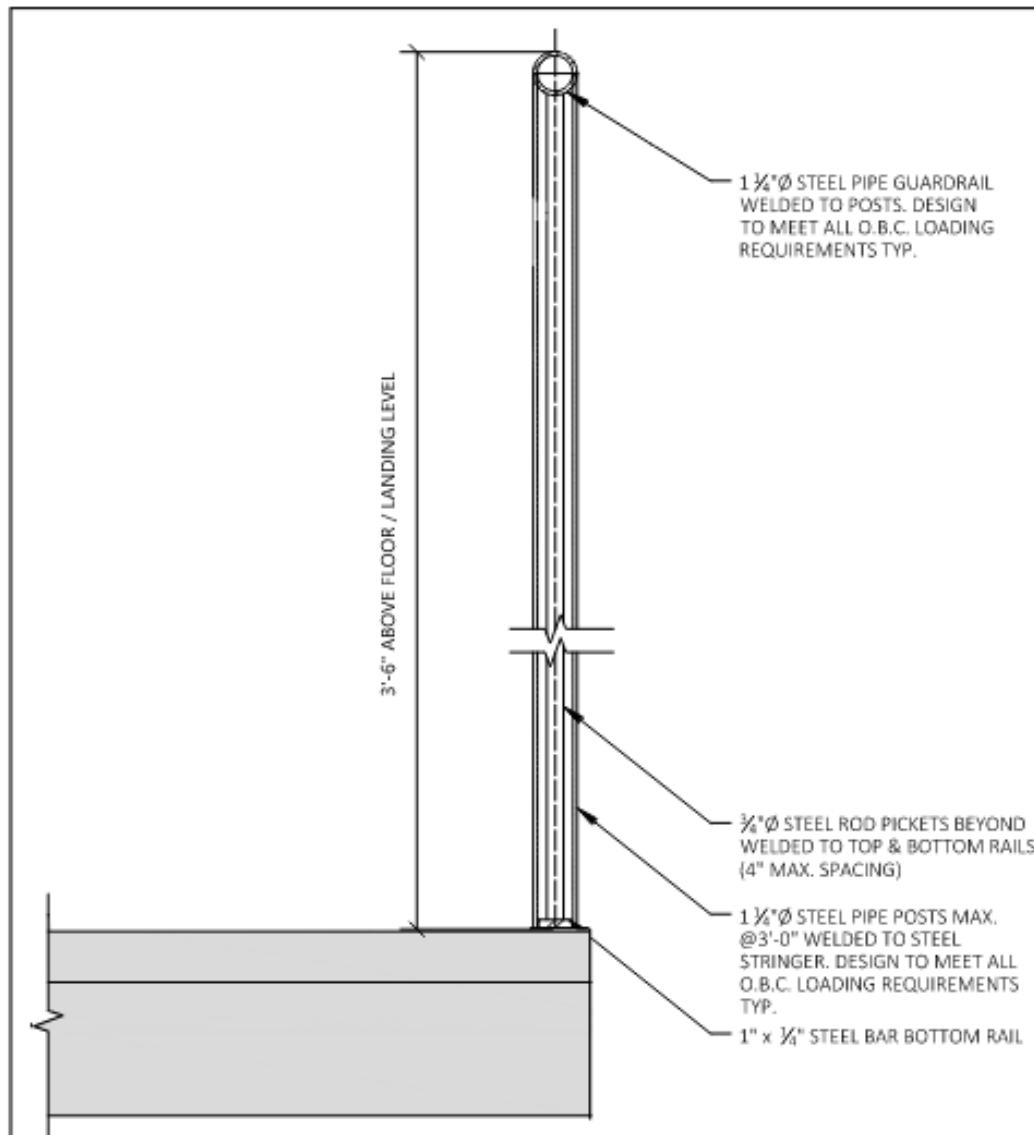


Figure 1: Railing Detail