

MECHANICAL LEGEND

Table with 2 columns: SYMBOL and DESCRIPTION. Categories include PLUMBING (Domestic Cold Water, Domestic Hot Water, etc.), VENTILATION (Ductwork, Air Grilles, etc.), VALVES & PIPING FITTINGS (Domestic Cold Water Meter, Gate Valve, etc.), and FIRE PROTECTION (Sprinkler Line, Sprinkler Head, etc.).

Table with 2 columns: SYMBOL and DESCRIPTION. Categories include VENTILATION (Ductwork, Air Grilles, etc.), VALVES & PIPING FITTINGS (Domestic Cold Water Meter, Gate Valve, etc.), and FIRE PROTECTION (Sprinkler Line, Sprinkler Head, etc.).

TERMINAL UNIT SCHEDULE table with columns: UNIT SIZE, INLET DIA. (mm), RECTANGULAR BRANCH TAP OR INLET DUCT SIZE (mm x mm), SELECTION MFG., MODEL No., MAX. AIR FLOW (L/S), and REMARKS.

PLUMBING FIXTURE SERVICE REQUIREMENTS table with columns: No., DESIGNATION, DRAIN, COLD WATER, HOT WATER, and VENT.

REGISTERS, GRILLES & DIFFUSERS SCHEDULE table with columns: TAG, APPLICATION, SELECTION MFG., MODEL DESCRIPTION AND SIZE (h x in), OPPOSED BLADE DAMPER, FINISH, and REMARKS.

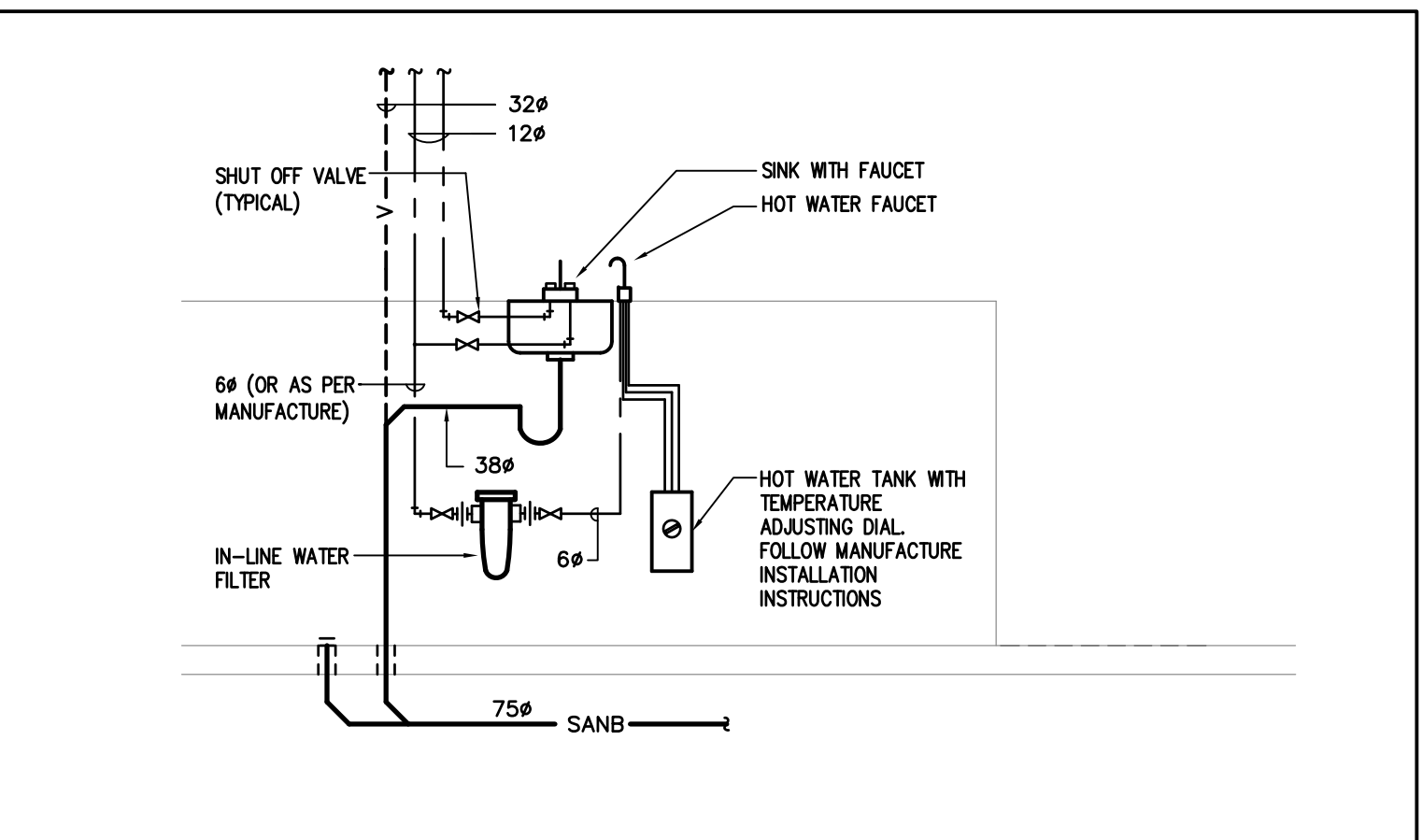
ELECTRIC DUCT HEATER SCHEDULE table with columns: TAG, MANUFACTURE, AIR FLOW CAPACITY (L/S), HEATING CAPACITY (WATT), DUCT SIZE (MM), ELECTRICAL DATA (V-PH-HZ, AMPS, FUSE), and REMARKS.

MECHANICAL DRAWING LIST table with columns: NUMBER and DESCRIPTION.

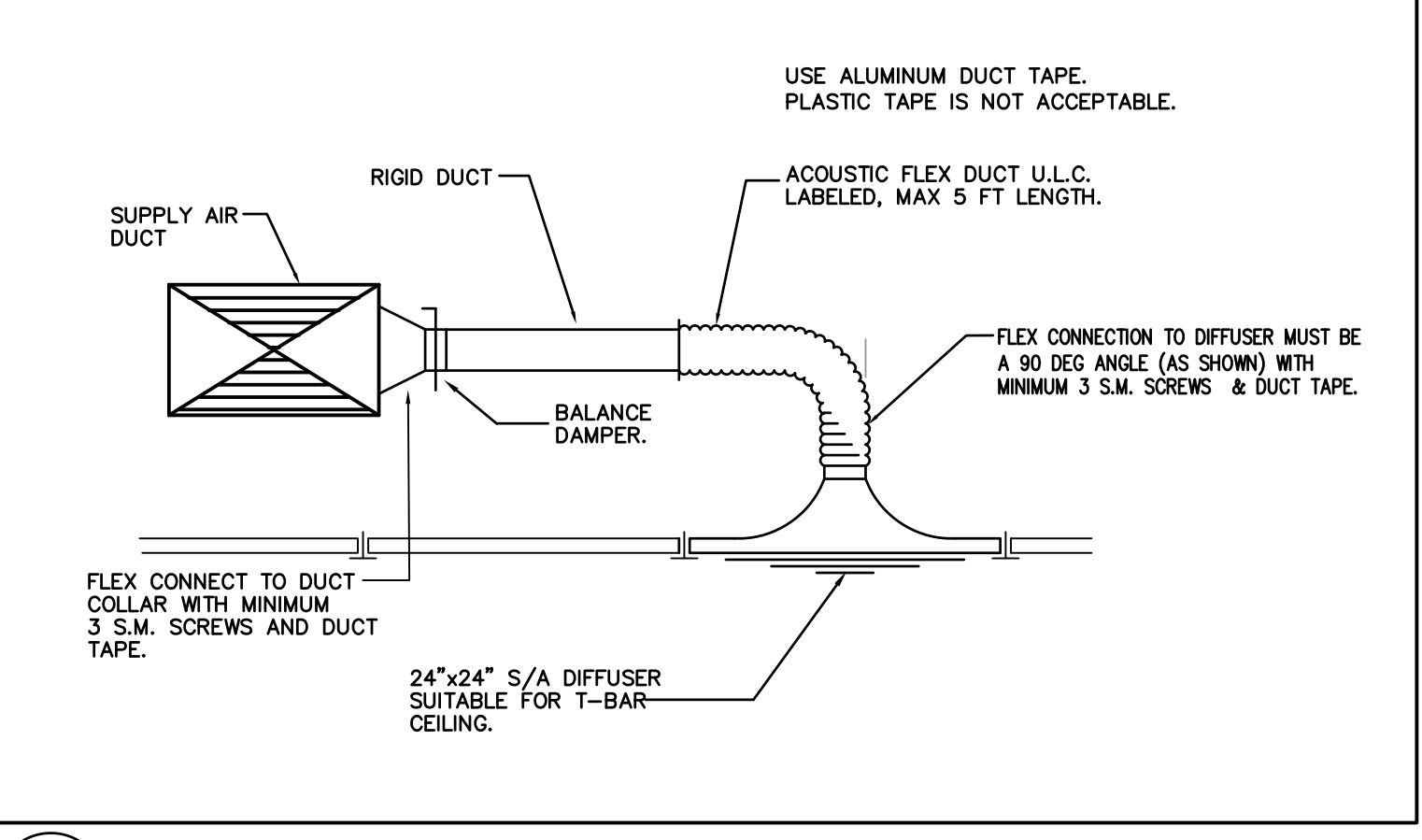
PLUMBING FIXTURES section containing detailed specifications for SINK, FAUCET, and HOT WATER DISPENSER UNIT.

NOTES for Terminal Unit Schedule regarding pressure independent flow, constant volume, and independent inlet/outlet flow.

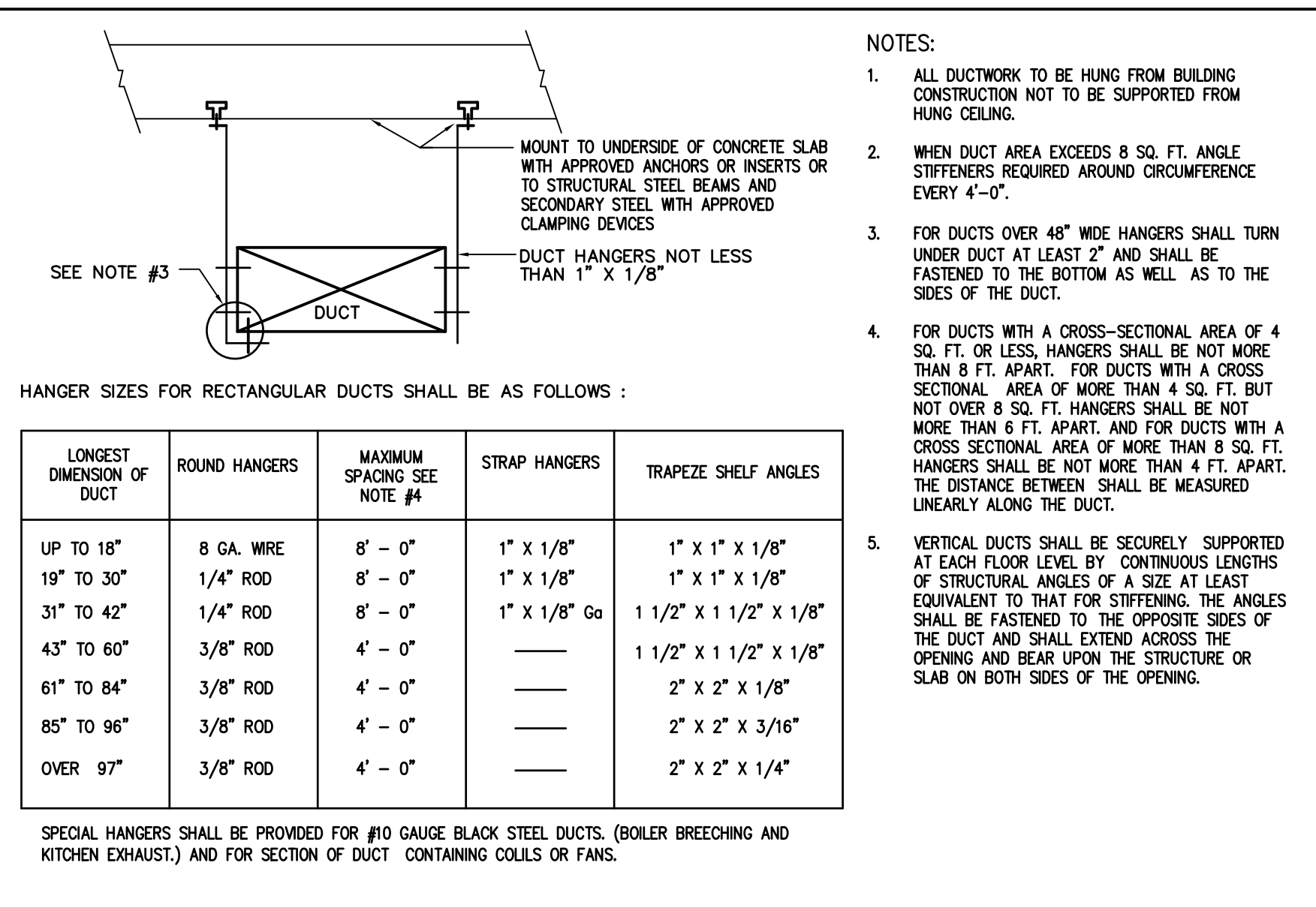
NOTES for Electric Duct Heater Schedule regarding air flow, heating capacity, and electrical data.



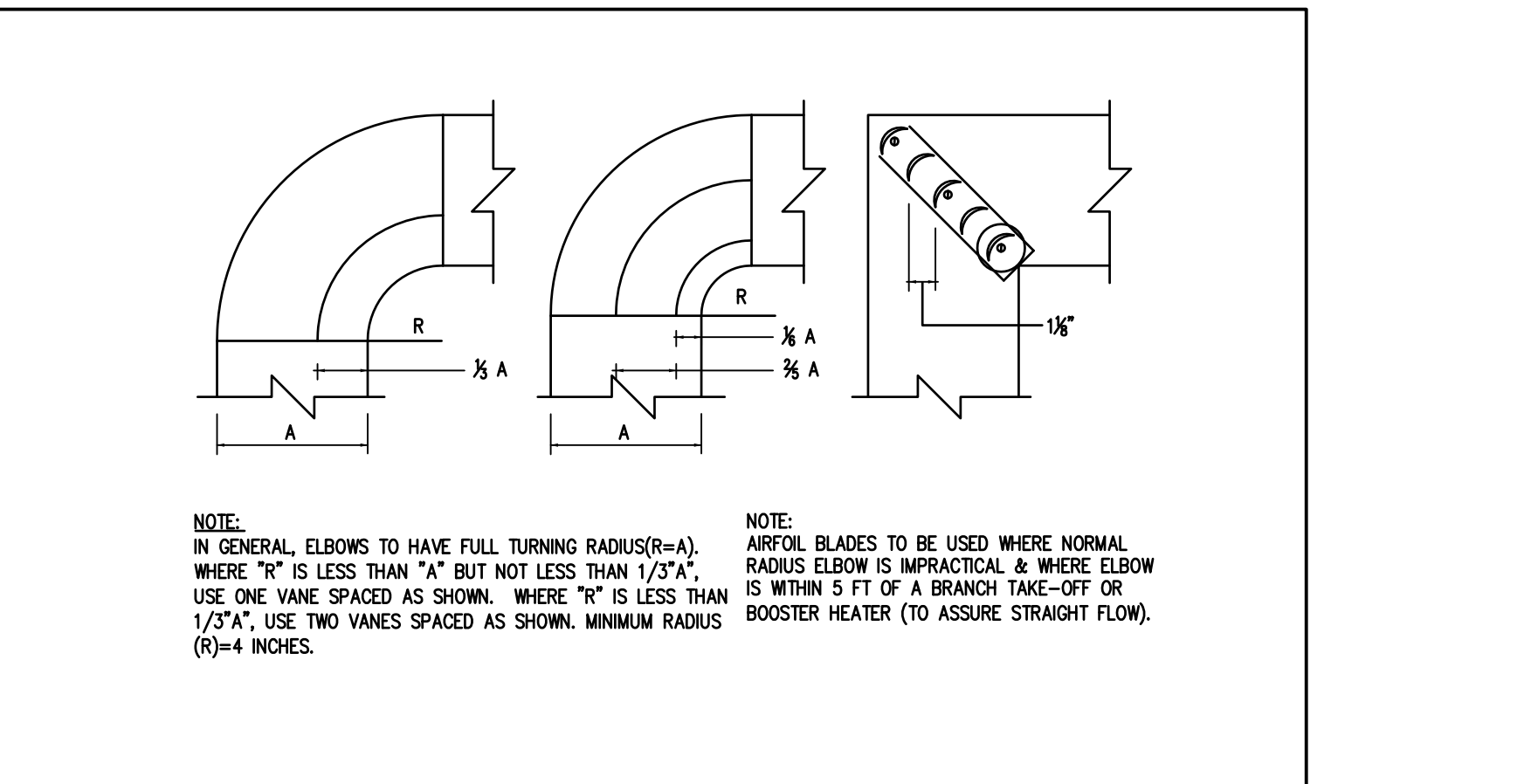
1 PLUMBING INSTALLATION AT KITCHENETTE
SCALE: N.T.S.



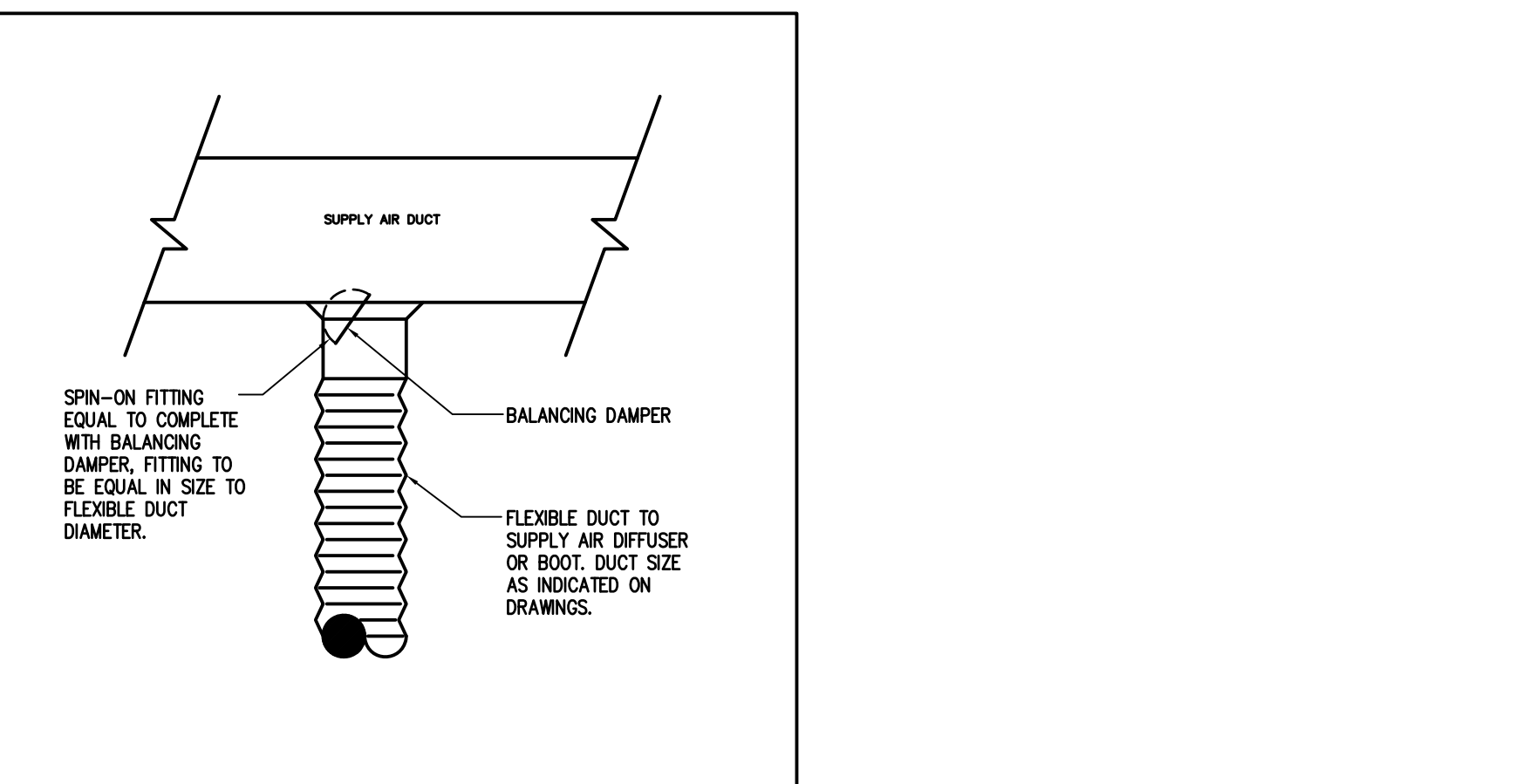
3 TYPICAL SUPPLY AIR DIFFUSER CONNECTION DETAIL
SCALE: N.T.S.



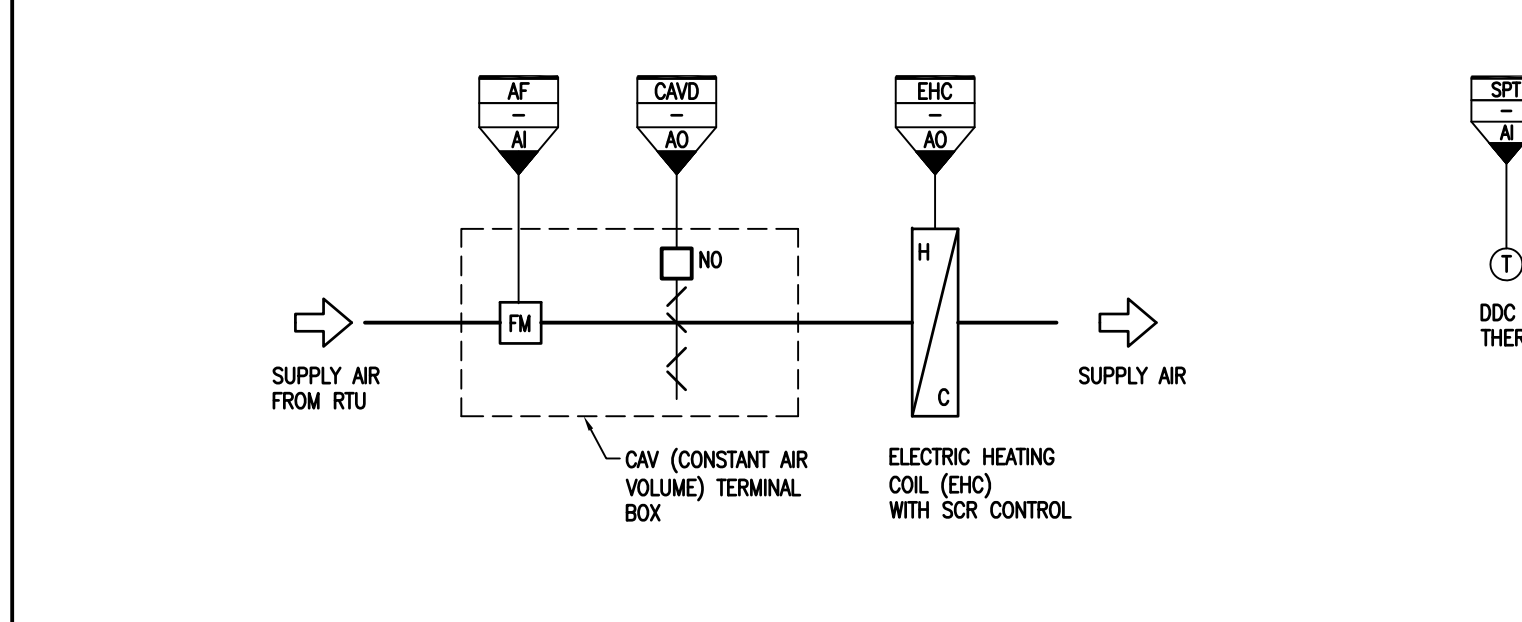
2 DUCT SUPPORT DETAIL
SCALE: N.T.S.



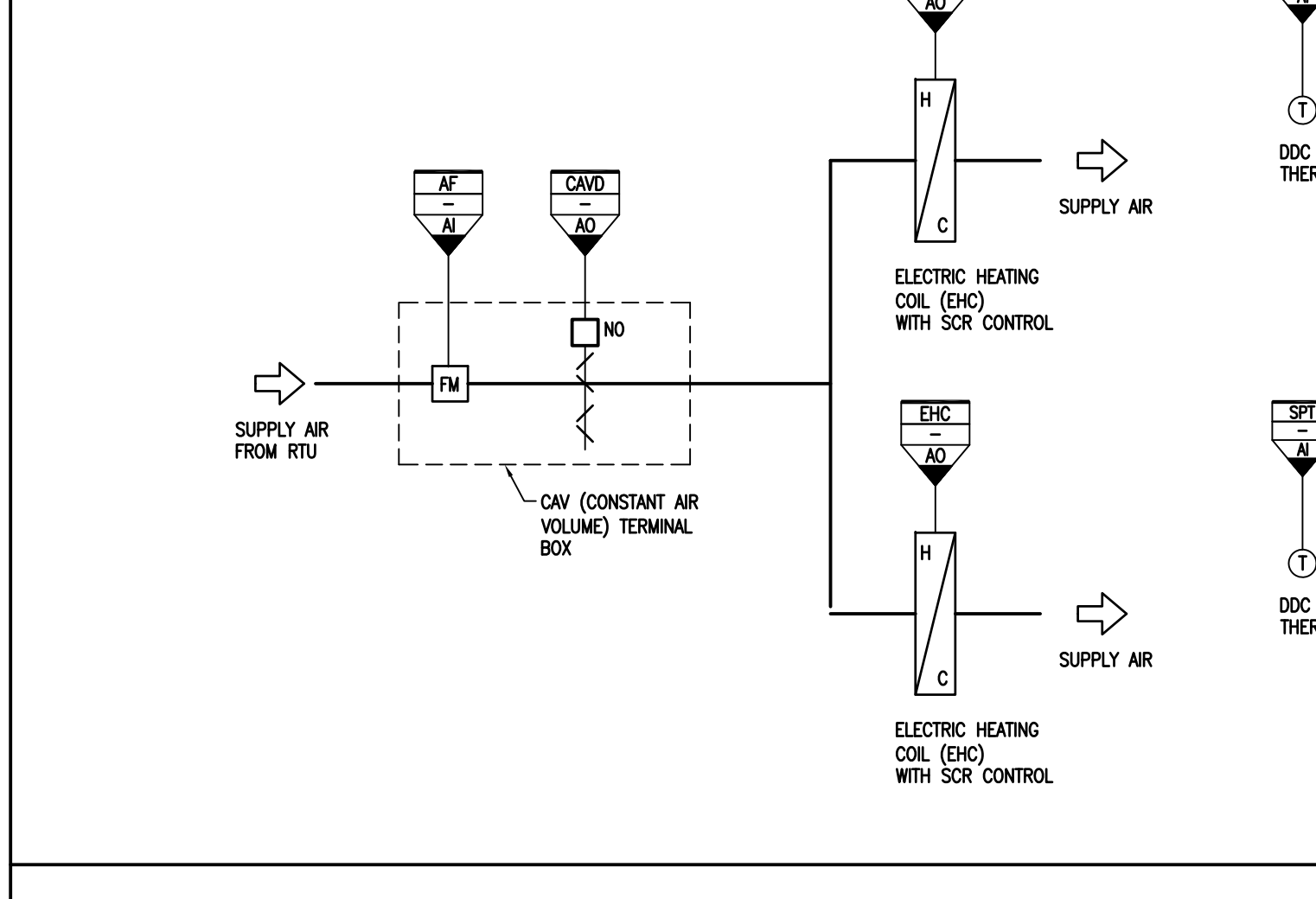
4 DETAIL-TURNING VANES
SCALE: N.T.S.



6 SPIN-ON FITTING DETAIL
SCALE: N.T.S.



5 CAV BOX WITH ELECTRIC REHEAT CONTROL DIAGRAM
SCALE: N.T.S.



SEQUENCE OF OPERATION section describing system start, normal operation, and unoccupied mode.

POINT LEGEND table with columns: POINT TYPE and PROGRAMS.

GENERAL section containing symbols for SECTION No., DETAIL No., and TYPE OF GRILLE OR DIFFUSER.

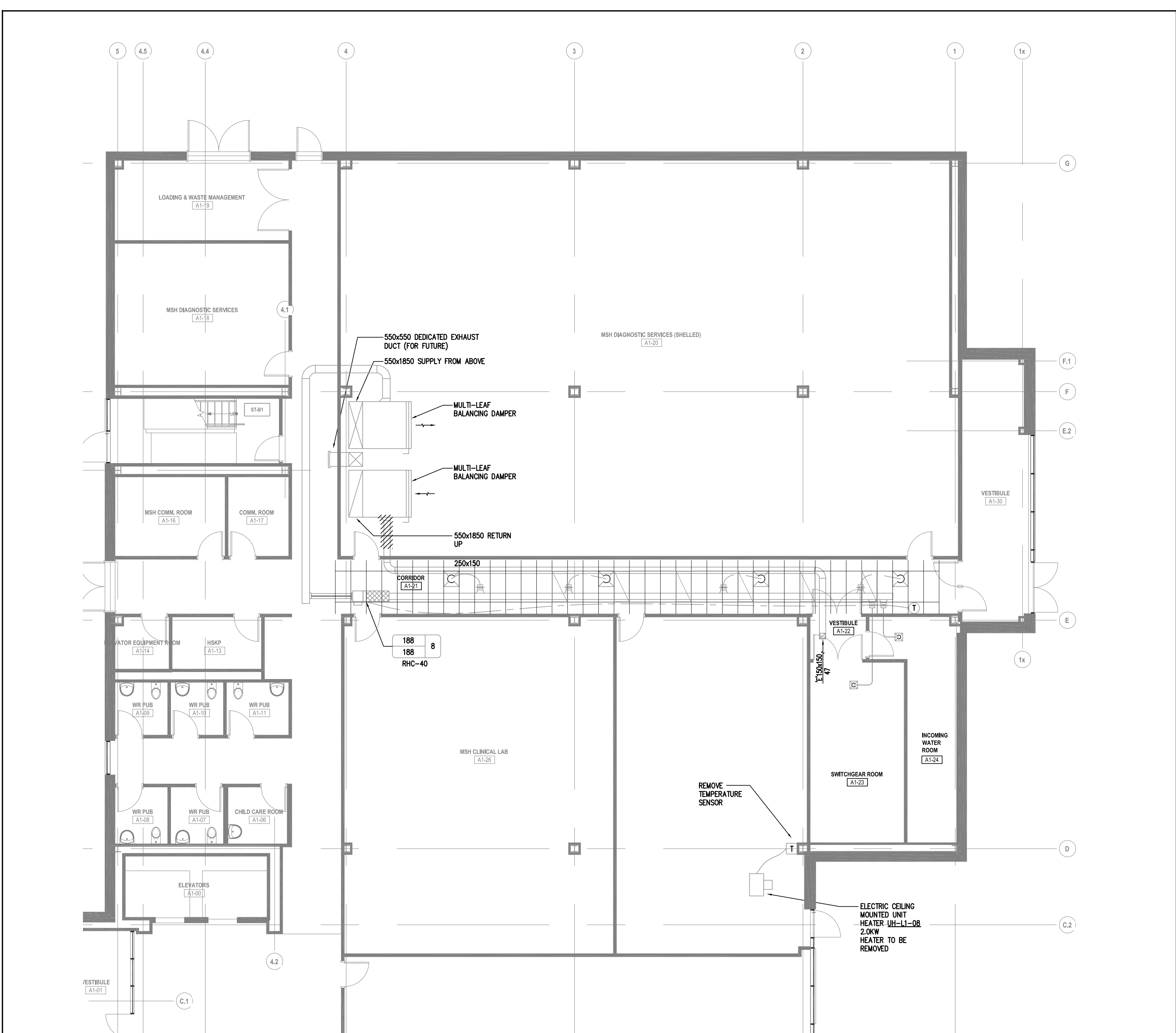
PROJECT HISTORY table with columns: DATE and REVISION.

All drawings and specifications are the property of the architect. The contractor shall verify all dimensions and information on the drawings and accessories to be used before proceeding.

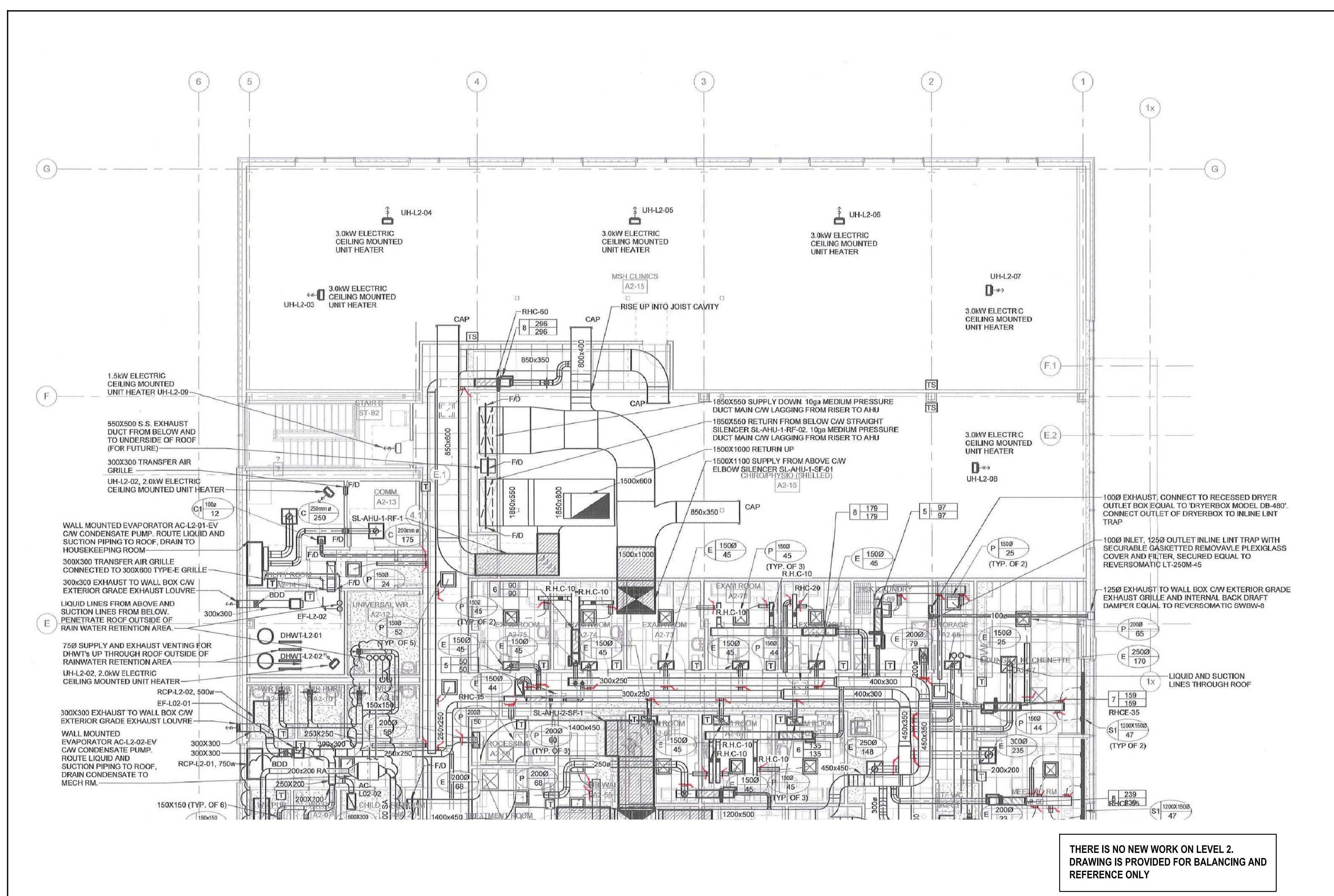
Project information table including PROJECT NAME (UXBRIDGE HOSPITAL FOUNDATION OFFICE), PROJECT ADDRESS, PROJECT CLIENT, SCALE (N.T.S.), DRAWN BY (CAD), REVIEWED BY (AP), PROJECT NUMBER (2304), PLOT DATE (MARCH 16, 2023), MECHANICAL LEGEND, DRAWING LIST, DETAILS, and DRAWING NUMBER (M0.1).



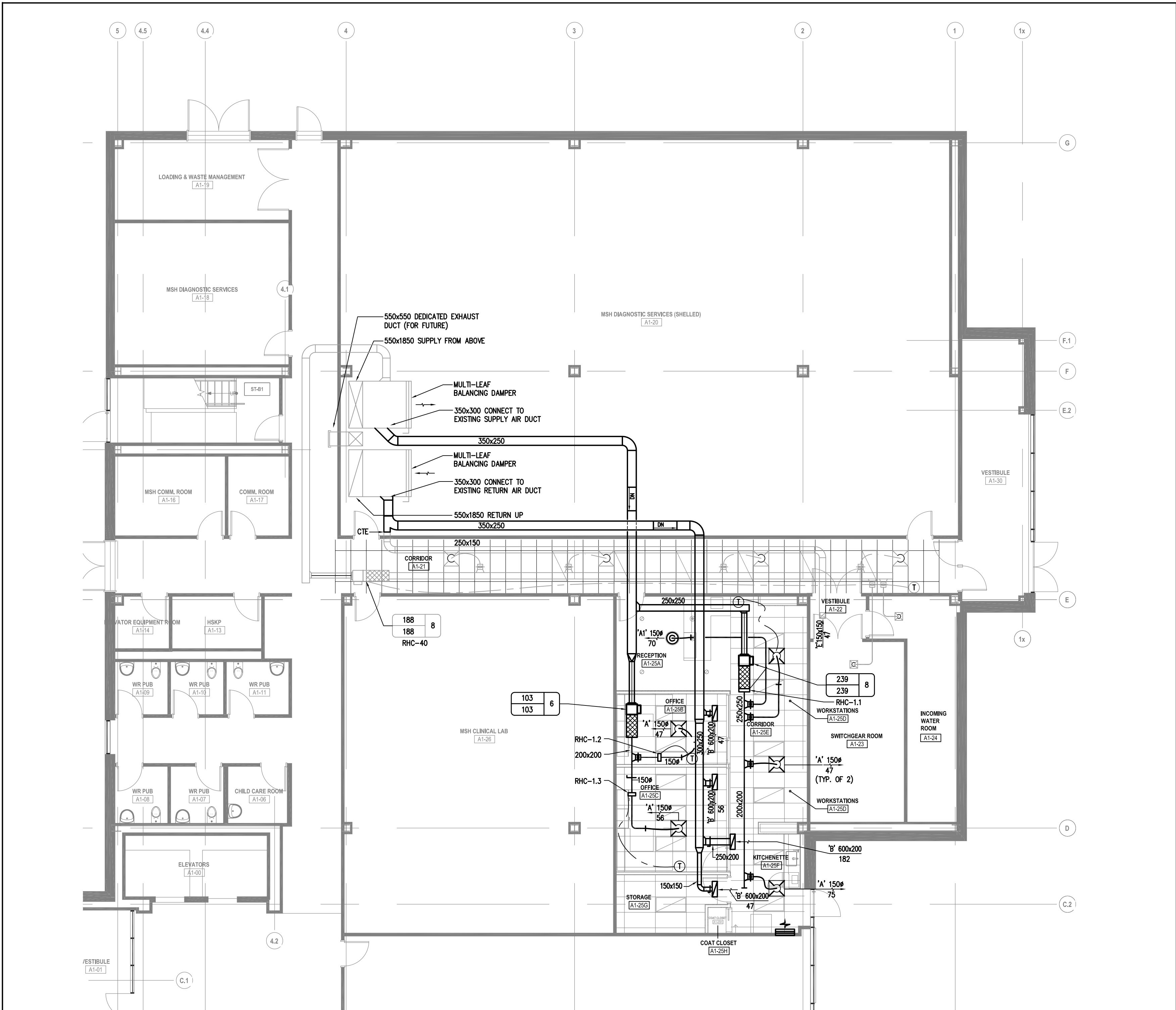
RESERVED FOR ARCHITECT DRAWING



1 LEVEL 1 PART PLAN - HVAC DEMOLITION
 M1.1 SCALE: 1:100

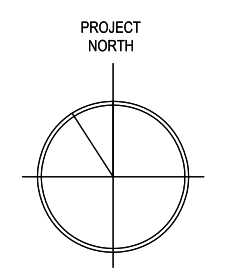


3 LEVEL 2 PART PLAN - HVAC EXISTING
 M1.1 SCALE: 1:100



2 LEVEL 1 PART PLAN - HVAC NEW LAYOUT
 M1.1 SCALE: 1:100

DRAWING NOTES:
 PRIOR TO ANY WORK, PROVIDE AIR FLOW MEASUREMENTS OF EXISTING SUPPLY AND RETURN AIR SYSTEM. THIS INCLUDES ALL DUCT BRANCHES AND OUTLETS ON LEVEL 1 AND LEVEL 2. SUBMIT REPORT IN ELECTRONIC FORMAT.
 AFTER MODIFICATIONS ARE DONE, BALANCE ALL AIR SYSTEMS AND SUPPLY WRITTEN AIR BALANCING REPORTS IN ELECTRONIC FORMAT.
 RE-BALANCE EXISTING SYSTEM OUTSIDE OF THE RENOVATED AREA TO PRE-CONSTRUCTION VALUES.
 SET AIR SYSTEMS CONTROLS AND DEMONSTRATE OPERATION TO OWNER'S REPRESENTATIVE.



NO.	DATE	REVISION
3	2023 03 16	ISSUED FOR TENDER
2	2022 11 19	ISSUED FOR PERMIT
1	2022 11 23	COORDINATION
0	DATE	REVISION

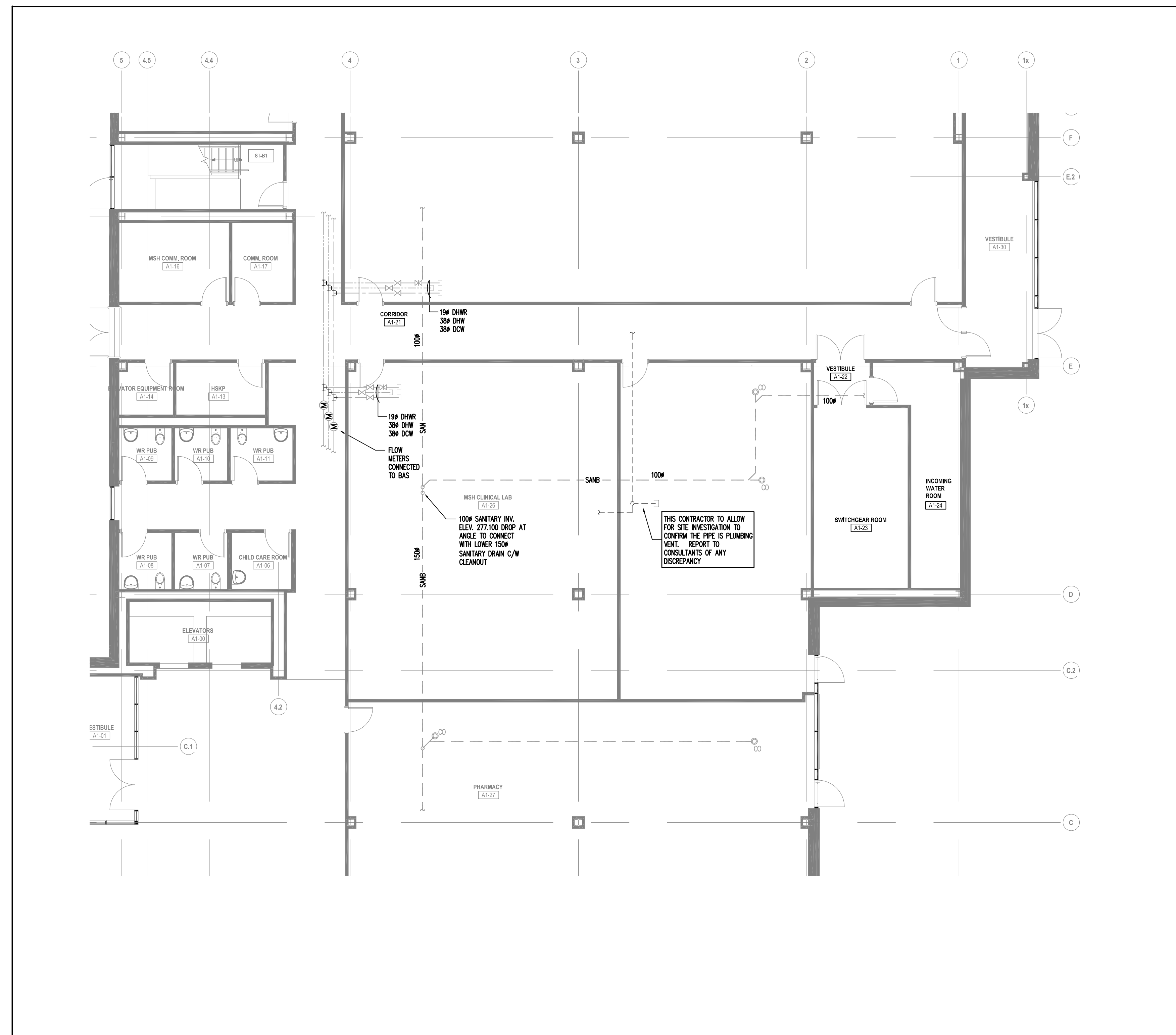
All drawings and specifications are the property of the architect. The Contractor shall verify all dimensions and information on site and report any discrepancy to Architect before proceeding.

UXBRIDGE HOSPITAL FOUNDATION OFFICE
 PROJECT ADDRESS
 4 CAMPBELL DRIVE, UXBRIDGE, ON L4R 1R5
 PROJECT NAME
 GAN VALLEY HEALTH SYSTEM
 SCALE
 1:100
 DRAWN BY
 CAD
 REVIEWED BY
 AP
 PROJECT NUMBER
 2204
 PLOT DATE
 MARCH 16, 2023

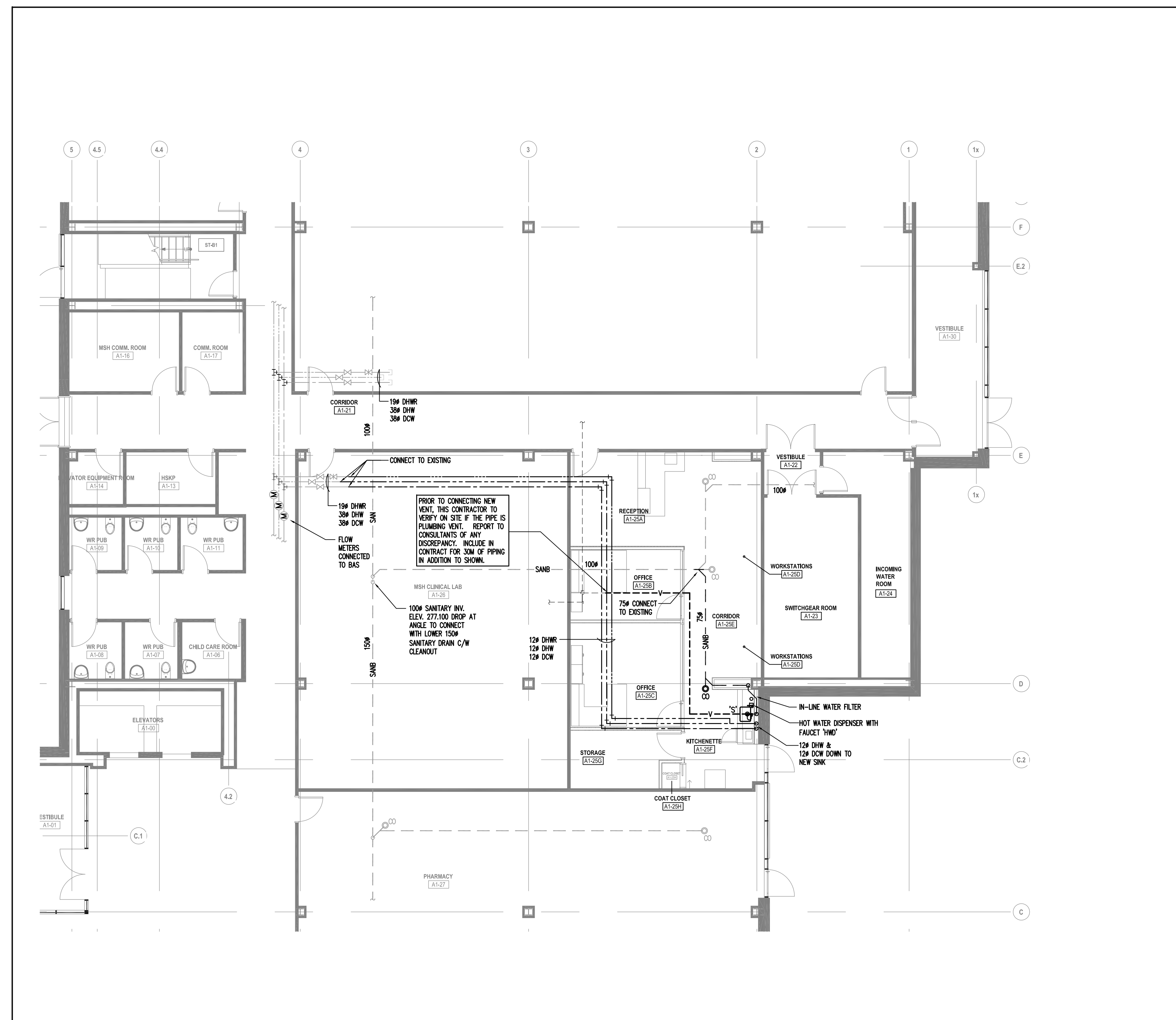
HVAC DEMOLITION AND NEW LAYOUT
 DRAWING NUMBER
M1.1



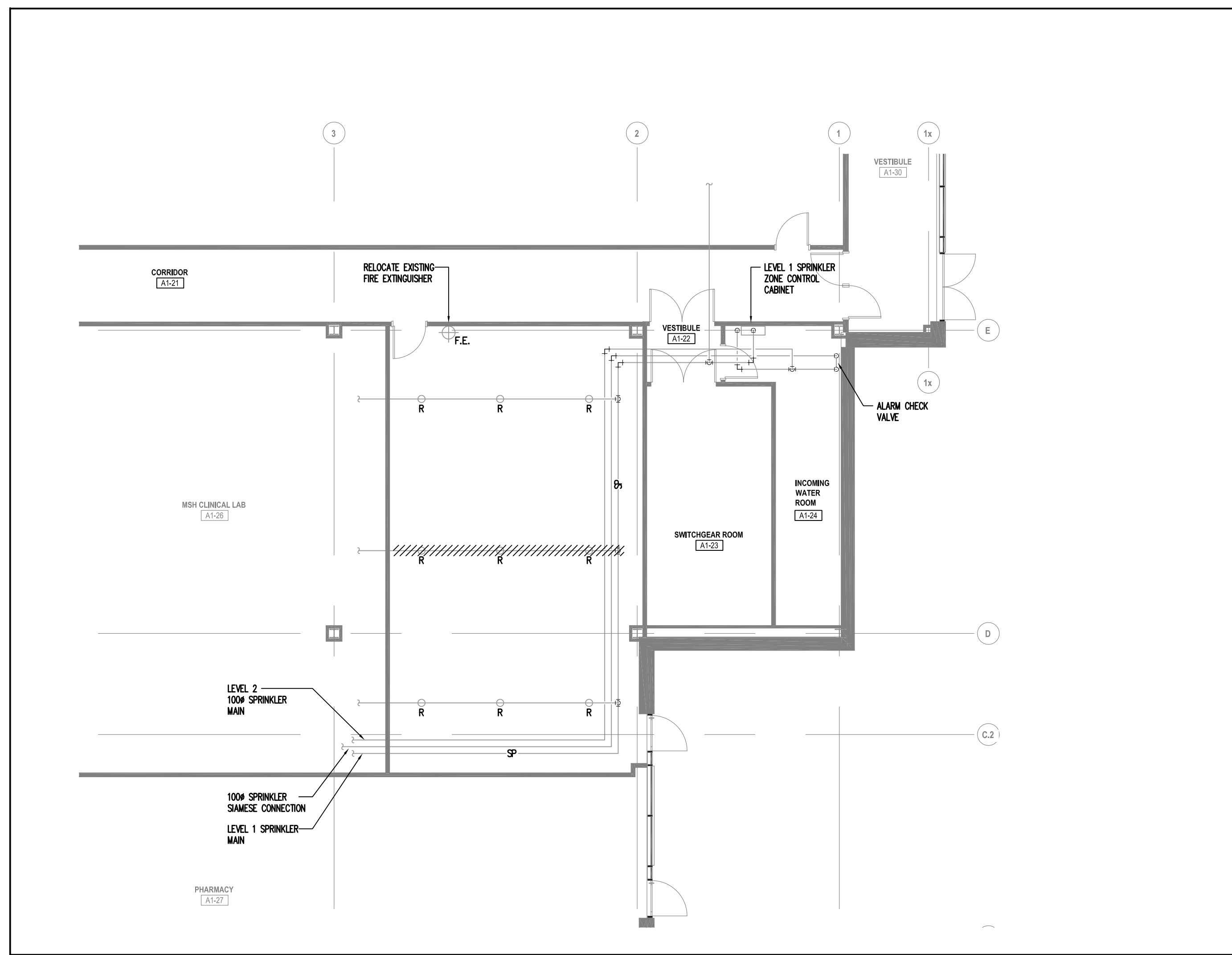
PREPARED FOR ALPHAVIT GROUP



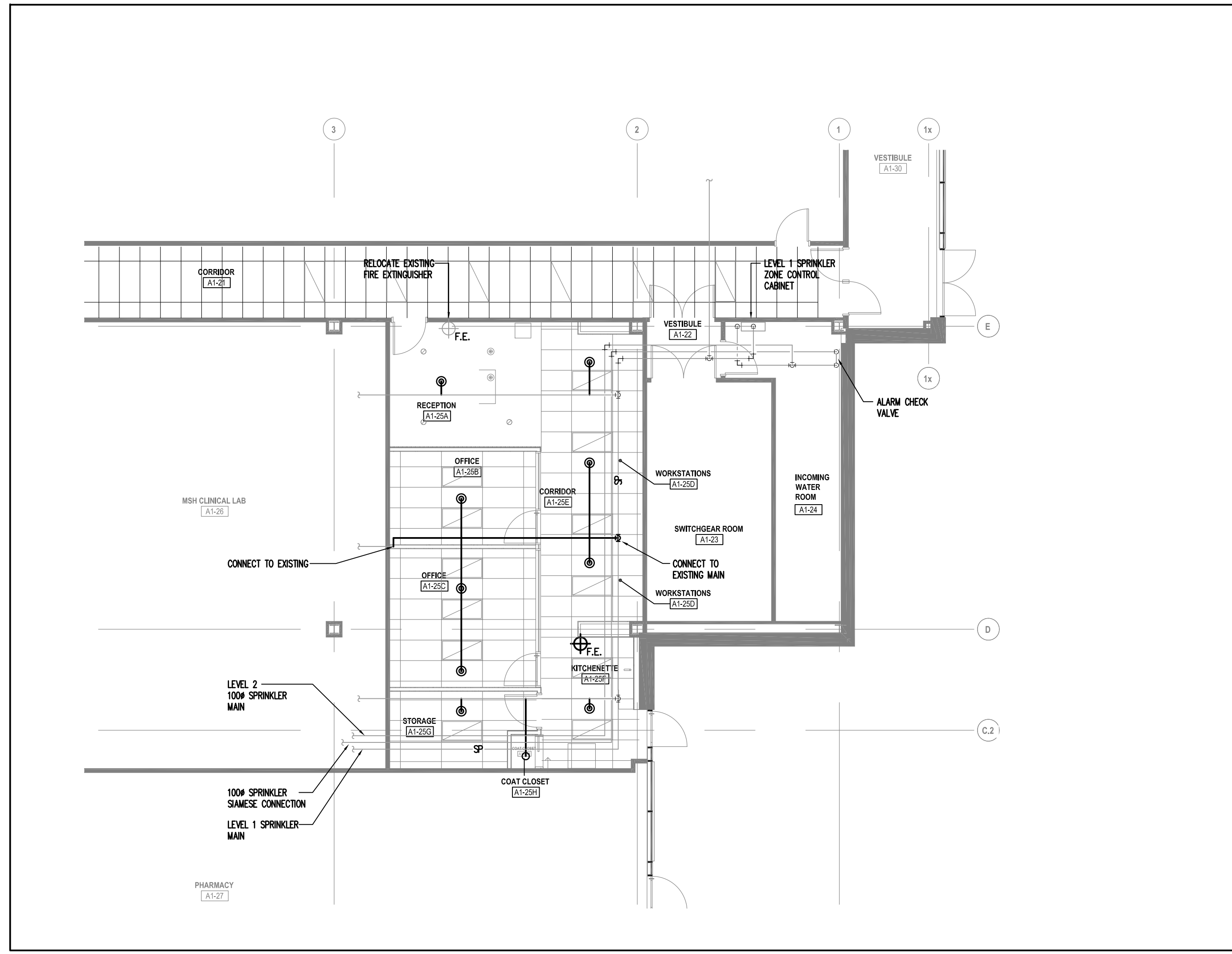
1 LEVEL 1 PART PLAN - PLUMBING DEMOLITION
 M1.2 SCALE: 1:100



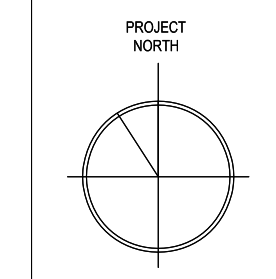
2 LEVEL 1 PART PLAN - PLUMBING NEW LAYOUT
 M1.2 SCALE: 1:100



3 LEVEL 1 PART PLAN - SPRINKLERS DEMOLITION
 M1.2 SCALE: 1:100



4 LEVEL 1 PART PLAN - SPRINKLERS NEW LAYOUT
 M1.2 SCALE: 1:100



NO.	DATE	REVISION
3	2023 03 16	ISSUED FOR TENDER
2	2022 11 19	ISSUED FOR PERMIT
1	2022 11 23	COORDINATION
0		DATE

All drawings and specifications are the property of the architect. The Contractor shall verify all dimensions and information on the drawings and specifications to Accuracy to Accuracy before proceeding.

UXBRIDGE HOSPITAL FOUNDATION OFFICE
 PROJECT ADDRESS
 4 CAMPBELL DRIVE, UXBRIDGE, ON L4P 1R5
 PROJECT CLIENT
 OAK VALLEY HEALTH SYSTEM
 SCALE 1:100
 DRAWN BY CAD
 REVIEWED BY AP
 PROJECT NUMBER 2304
 PLOT DATE MARCH 16, 2023

PLUMBING & SPRINKLERS
 DEMOLITION AND NEW LAYOUT

DRAWING NUMBER
M1.2

