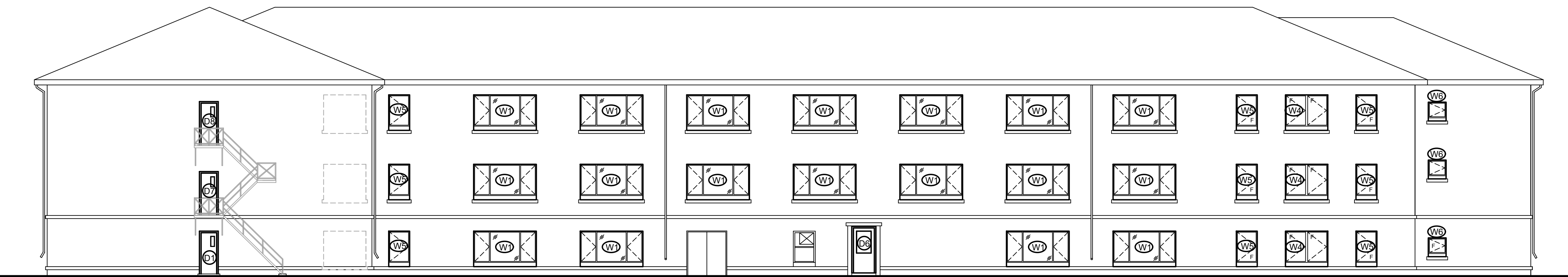
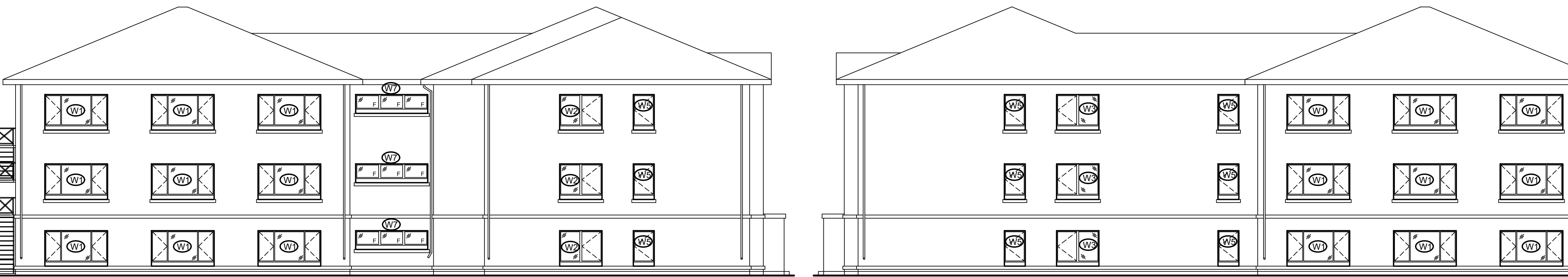


N1 WEST ELEVATION - NEW VINYL & ALUMINUM WINDOWS
SCALE: 1/125

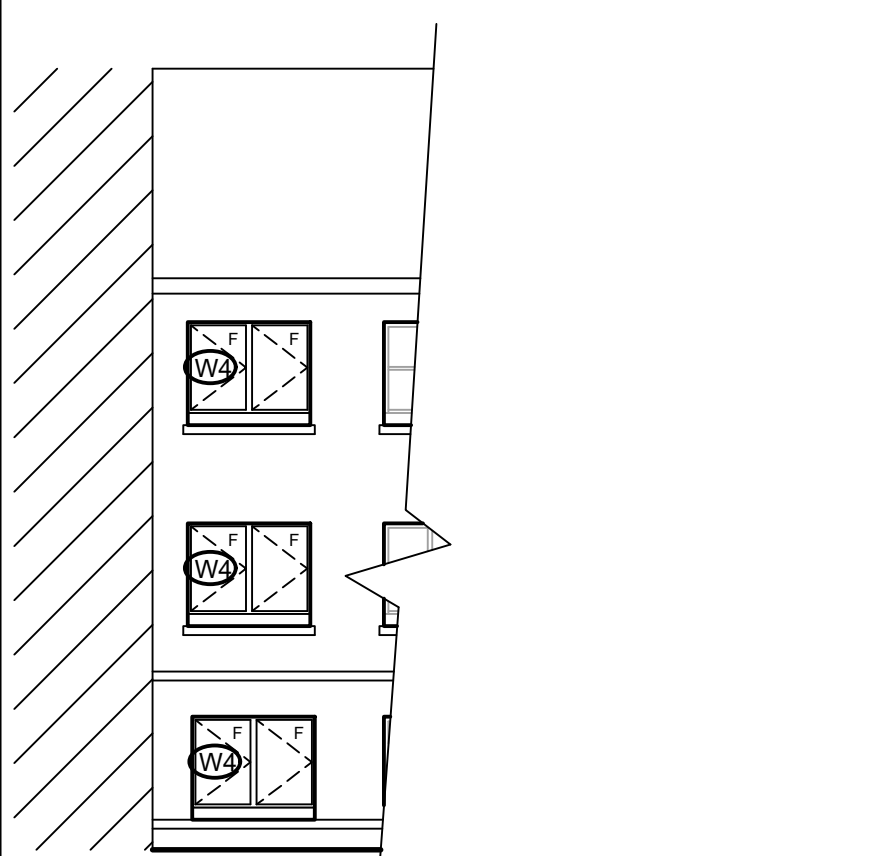


N2 EAST ELEVATION - NEW VINYL WINDOWS & MISC. CONSTRUCTION
SCALE: 1/125

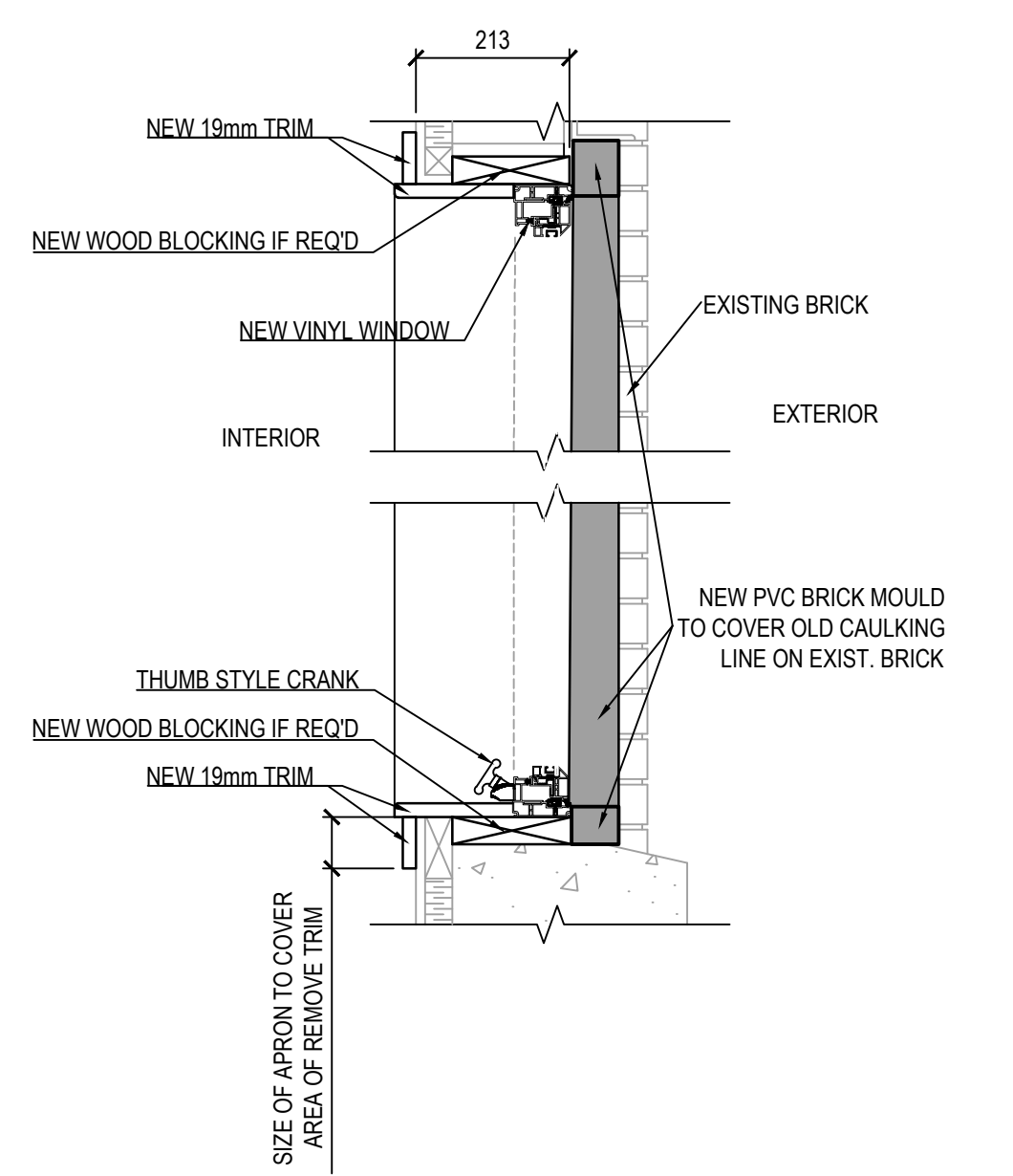


N3 NORTH ELEVATION - NEW VINYL WINDOWS
SCALE: 1/125

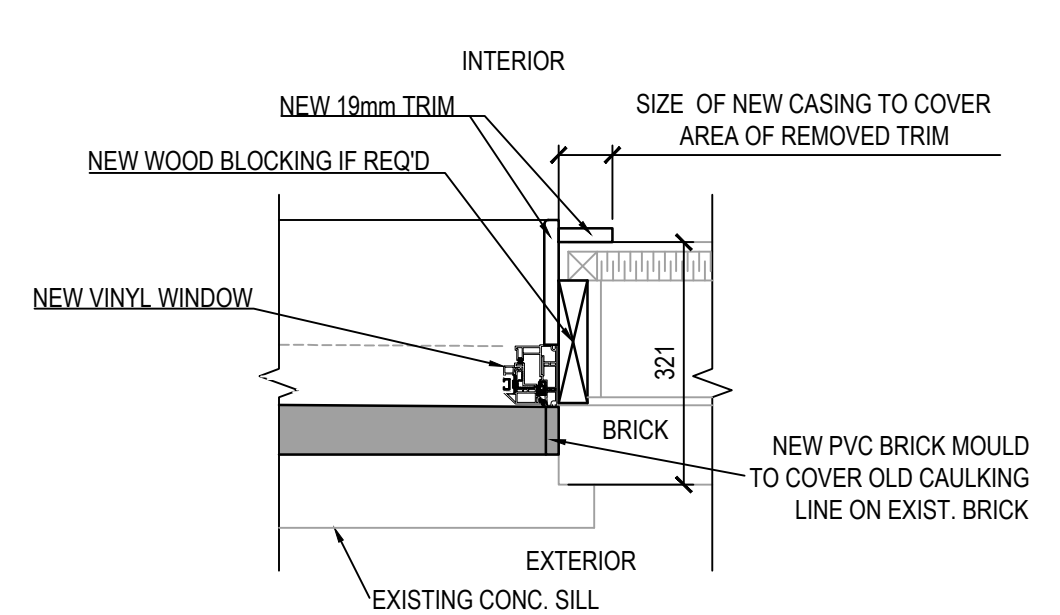
N4 SOUTH ELEVATION - NEW VINYL WINDOWS
SCALE: 1/125



N2a EAST ELEVATION - NEW VINYL WINDOWS
SCALE: 1/125



WINDOW SILL DETAIL (TYPICAL)



WINDOW JAMB DETAIL (TYPICAL)
N.T.S.

LEGEND

- --- INDICATES EXISTING TO BE REMOVED AND DISPOSED OF (DEMOLITION).
- Ⓡ INDICATES EXISTING WINDOW TO BE REMOVED AND DISPOSED OF.
- ⓓ INDICATES EXISTING DOOR AND IN SOME CASES ATTACHED FRAME TO BE REMOVED AND DISPOSED (REFER TO NEW DOOR AND FRAME SCHEDULE).
- Ⓦ INDICATES NEW WINDOW.
- ⓓ INDICATES NEW DOOR AND MAYBE NEW FRAME (REFER TO NEW DOOR AND FRAME SCHEDULE).
- WC --- INDICATES WINDOW COVERINGS TO BE REMOVED AND STORED IN A SAFE PLACE FOR REINSTALLATION ON COMPLETION OF NEW WINDOW INSTALLATION.
- RWC --- INDICATES TO REMOVE AND DISPOSE OF EXISTING WINDOW COVERINGS
- WC --- INDICATED EXISTING REMOVED WINDOW COVERINGS TO BE REINSTALLED.
- NS --- INDICATES TO PROVIDE NEW MANUAL ROLLER SHADES
- --- INDICATES NEW CONSTRUCTION.
- T INDICATES TILE FINISH ON INTERIOR OF WINDOW TO BE CAREFULLY REMOVED IF AND WHERE NECESSARY TO INSTALL NEW WINDOW. PATCH AND TRIM TO MAKE GOOD AND MATCH EXISTING ADJACENT SURFACES. (REFER TO PHOTO #21-307 FOR EXAMPLE)
- F INDICATES FROSTING FOR PRIVACY ADDED TO WINDOW GLAZING.

SCHEDULE OF NEW VINYL REPLACEMENT WINDOWS

| WINDOW TYPE ID | WINDOW SIZE | QUANTITY OF UNITS | REMARKS |
|----------------|---|-------------------|--|
| W1 | 3000 APPROX 1/4 1/2 1/4 1500 170 | 70 | 1. CASEMENT - FIXED - CASEMENT 2. RESTRICT HARDWARE TO A 100mm OPENING |
| W2 | 2025 EQ EQ 1500 170 | 3 | 1. FIXED - CASEMENT 2. RESTRICT HARDWARE TO A 100mm OPENING |
| W3 | 2025 EQ EQ 1500 170 | 3 | 1. CASEMENT - FIXED 2. RESTRICT HARDWARE TO A 100mm OPENING |
| W4 | 2025 EQ EQ 1500 170 | 6 | 1. CASEMENT - CASEMENT 2. RESTRICT HARDWARE TO A 100mm OPENING 3. PRIVACY FROSTING TO BOTH OPERATING WINDOW UNITS. |
| W5 | 985 1500 170 | 18 | 1. CASEMENT 2. RESTRICT HARDWARE TO A 100mm OPENING 3. PRIVACY FROSTING TO ALL FIXED WINDOW UNITS WHERE INDICATED ON NEW WINDOW ELEVATIONS (ALL WASHROOMS). |
| W6 | 825 1500 170 | 11 | 1. CASEMENT 2. RESTRICT HARDWARE TO A 100mm OPENING 3. PRIVACY FROSTING TO ALL FIXED WINDOW UNITS WHERE INDICATED ON NEW WINDOW ELEVATIONS (ALL GROUND FLOOR STORAGE ROOMS). |
| W7 | 3450 1/3 1/3 1/3 1700 170 | 3 | 1. FIXED - FIXED - FIXED 2. PRIVACY FROSTING TO ALL FIXED WINDOW UNITS. |

***GENERAL NOTE:**
1. ALL DIMENSIONS ARE APPROXIMATE. BIDDING CONTRACTOR TO ENSURE PRODUCT MEASUREMENTS FIT INTO EXISTING SPACE TO RECEIVE NEW WINDOWS.
2. ALL CAULKING ON EXISTING WINDOWS CONTAIN NON-FRIABLE CHRYSOTILE ASBESTOS.
3. ALL WINDOWS TO COME C/W PVC BRICK MOULDING TO COVER REMOVED CAULKING LINE.

SCHEDULE OF NEW ALUMINUM GLAZED WINDOW WALL

| WINDOW TYPE ID | WINDOW SIZE | QUANTITY OF UNITS | NOTE |
|----------------|---|-------------------|------------------|
| W8 | 1700 EQ EQ EQ EQ EQ EQ 6050 200 | 2 | 1. FIXED GLAZING |

***GENERAL NOTE:**
1. ALL DIMENSIONS ARE APPROXIMATE. BIDDING CONTRACTOR TO ENSURE PRODUCT MEASUREMENTS FIT INTO EXISTING SPACE TO RECEIVE NEW WINDOWS.
2. ALL CAULKING ON EXISTING WINDOWS CONTAIN NON-FRIABLE CHRYSOTILE ASBESTOS.
3. ALL WINDOWS TO COME C/W PVC BRICK MOULDING TO COVER REMOVED CAULKING LINE.

LEVEL OF SECURITY | NIVEAU DE SÉCURITÉ

This drawing is an instrument of service and is protected by copyright, copyright for the consultant's instrument of service belongs to the consultant. Copies including electronic copies, may only be used for the purpose intended and for a one-time use, on the same site, and for the same project and may not be offered for sale or transfer without the express written consent of the consultant.

Le présent dessin est un instrument de service protégé par le droit d'auteur. Le droit d'auteur sur l'instrument de service appartient à ce dernier. Les exemplaires de ce dessin, y compris les exemplaires électroniques, ne peuvent servir qu'à des fins prévues, et ce, qu'une fois, sur le même chantier et pour le même projet. Ils ne peuvent être offerts en vente ni transférés sans le consentement écrit exprès de l'expert-consultant.

GENERAL NOTES

- THE DESIGN AND CONSTRUCTION OF ALL WORK ON THIS PROJECT IS TO CONFORM TO THE LATEST VERSION INCLUDING AMENDMENTS OF THE NATIONAL BUILDING CODE & ANY OTHER CODE OF PROVINCIAL OR LOCAL APPLICATION, INCLUDING THE RELEVANT LISTED CSA STANDARDS. IN ANY CASE OF CONFLICT OR DISCREPANCY THE MORE STRINGENT REQUIREMENTS SHALL APPLY.
- ALL EXTERIORS OF EXISTING ALUMINUM WINDOWS AND DOORS BEING REMOVED IN THIS CONTRACT ARE SEALED WITH NON-FRYABLE, CHRYSOTILE ASBESTOS CONTAINING CAULKING, AND REQUIRES PROPER ABATEMENT AND DISPOSAL AS PART OF THIS CONTRACT. REFER TO SPECIFICATION 02 82 00 01 - ASBESTOS ABATEMENT MINIMUM REQUIREMENTS AND PROVIDED DESIGNATED SUBSTANCE SURVEY REPORT (ANNEX 'A') FOR MORE INFORMATION.
- SHOULD MORE MATERIAL RESEMBLING ASBESTOS BE ENCOUNTERED IN THE COURSE OF DEMOLITION, STOP WORK AND NOTIFY DCC REPRESENTATIVE IMMEDIATELY. DO NOT PROCEED UNTIL WRITTEN INSTRUCTIONS ARE RECEIVED.
- READ THESE DRAWINGS IN CONJUNCTION WITH ALL RELATED CONTRACT DOCUMENTS.
- THE CONTRACTOR SHALL CHECK AND VERIFY ALL CONDITIONS AND MEASUREMENTS AT THE SITE AND REPORT TO THE DCC REPRESENTATIVE ANY DISCREPANCIES OR UNSATISFACTORY CONDITIONS WHICH MAY ADVERSELY AFFECT THE PROPER COMPLETION OF THE JOB BEFORE PROCEEDING WITH THE WORK.
- RUBBISH FROM DEMOLITION AND CONSTRUCTION WASTE ARE TO BE SEPARATED BY TYPE AND KEPT TO A MINIMUM.
- DO NOT SCALE THE DRAWINGS.
- ALL DIMENSIONS ON DRAWINGS ARE IN MILLIMETRES U.N.O.
- DELIVER, HANDLE AND STORE MATERIALS TO AVOID DAMAGE IN ANY MANNER.
- MAINTAIN A SET OF DRAWINGS ON SITE & UPDATE FREQUENTLY WITH CONSTRUCTION RECORD INFORMATION.
- MAKE ALL AREAS EFFECTED BY CONSTRUCTION ACTIVITIES GOOD AND TO MATCH EXISTING ADJACENT AREAS.

| NO. | DATE | REVISION | APPR. |
|-----|------|----------|-------|
| | | | |

SCALE | ÉCHELLE
AS SHOWN

LOCATION | EMPLACEMENT
21 PARADE AVE. (A-150)
BORDEN, ON

PROJECT | PROJET
REPLACE WINDOWS AND DOORS

TRADE | MÉTIER
ARCHITECTURAL

DATE
2022-10-17

SUBJECT | SUJET
ELEVATIONS, SCHEDULES, NOTES & DETAILS OF NEW CONSTRUCTION BLDG. A-150

| PRODUCTION | DESIGNED ÉTUDIÉ | REVIEWED REVU | DES O AGENT CONC |
|-----------------|-------------------|-----------------------|--------------------|
| | | | |
| DRAWN DESSINÉ | CHECKED VÉRIFIÉ | COORDINATION | PF NUMBER No DP |
| | | | |
| DATE | DATE | DWG. NO. No. DESSIN | |
| | | | |

PROJ MGR | GEST PROJ
M.T.
DES MGR | GEST CONC
FIRE | INCENDIE

BN3000257 L-B147-6834/9-304