

APPENDIX D – ELECTRICAL DRAWINGS, NOTES, and DIAGRAMS

THESE DRAWINGS ARE TO BE
READ IN CONJUNCTION WITH THE
HALLEX BOOK SPECIFICATIONS

THESE ELECTRICAL DRAWINGS AND ACCOMPANYING SPECIFICATIONS
COMPLEMENT EACH OTHER. CAREFULLY EXAMINE THE DRAWINGS AND
SPECIFICATIONS. IN THE EVENT OF DISCREPANCIES OR CONFLICT
BETWEEN DRAWINGS AND/OR SPECIFICATIONS AND/OR APPLICABLE
CODE(S), THE MORE STRINGENT SHALL APPLY.

ANY DISCREPANCIES BETWEEN DRAWINGS AND SPECIFICATIONS ARE TO
BE REPORTED TO THE ENGINEER.

SCOPE OF WORK INCLUDES:

- REMOVAL OF ALL EXISTING FIRE ALARM HORN DEVICES
- REMOVAL OF THE EXISTING FACP.
- SUPPLY AND INSTALL NEW FACP COMPLETE WITH ANNUNCIATOR MODULE.
- SUPPLY AND INSTALL ALL FIRE ALARM CONDUCTORS & CONDUIT TO FEED ALL NEW HORN/STROBE DEVICES.
- SUPPLY AND INSTALL ALL FIRE ALARM CONDUCTORS & CONDUIT TO FEED ALL NEW STROBE DEVICES.
- SUPPLY AND INSTALL ALL FIRE ALARM CONDUCTORS & CONDUIT TO FEED ALL NEW HEAT DETECTORS / SMOKE DETECTORS.
- SUPPLY AND INSTALL NEW HORN/STROBE FIRE ALARM NOTIFICATION DEVICES AS SHOWN ON THE FIRE ALARM PLANS.
- UTILIZE EXISTING DEVICE BOXES WHERE APPROPRIATE. SUPPLY AND INSTALL NEW DEVICE BOXES AS REQUIRED.

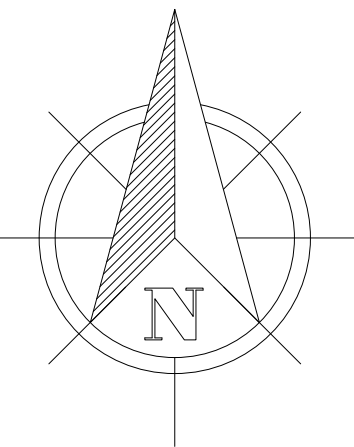
THE ABOVE LIST IS NOT COMPREHENSIVE AND DOES NOT INDICATE ALL ITEMS OR REQUIREMENTS TO SUCCESSFULLY COMPLETE THE
SCOPE OF WORK.

DRAWING LIST

- E1

ELECTRICAL NOTES, LOCATION PLAN, ELECTRICAL
LEGENDS AND SCHEDULES, AND FIRE ALARM RISER
DIAGRAMS
- E2

DEMOLITION & FIRE ALARM PLANS



Do not scale drawings. Report any discrepancies to
Hallex Engineering Ltd. before proceeding.

This drawing must be signed and sealed by the
Engineer prior to use in construction or submission
for building permit.

All construction shall be in accordance with latest
edition of the Ontario Building Code and all
applicable Ontario regulations.

No part of this drawing including details,
calculations or schedules may be reproduced in
any form, either in part or whole, without the prior
written consent of Hallex Engineering Ltd.

Hallex
ENGINEERING LTD.

4999 Victoria Ave.,
Niagara Falls, ON L2E 4C9
Tel: 906-357-4015 Fax: 906-353-1105

745 South Service Rd. Unit 301A,
Stoney Creek, ON L8E 5Z2
Tel: 905-861-4016



LOCATION PLAN

SCALE: N.T.S.

EXISTING FIRE ALARM ZONE LIST	
ALARM ZONE	DESCRIPTION
1	WHOLE BUILDING

EXISTING FIRE ALARM SUPERVISORY ZONE LIST	
ALARM ZONE	DESCRIPTION
1	COMMON ALARM
2	COMMON SUPERVISORY
3	BATTERY TROUBLE
4	GROUND FAULT

EXISTING FIRE ALARM NAC LIST	
ALARM ZONE	DESCRIPTION
1	EXISTING - HORNS / BELLS

NEW FIRE ALARM ZONE LIST	
ALARM ZONE	DESCRIPTION
1	ENTIRE BUILDING
2 - 4	3 SPARE FIRE ALARM ZONES

NEW FIRE ALARM SUPERVISORY ZONE LIST	
ALARM ZONE	DESCRIPTION
1	COMMON ALARM
2	COMMON SUPERVISORY
3	BATTERY TROUBLE
4	GROUND FAULT

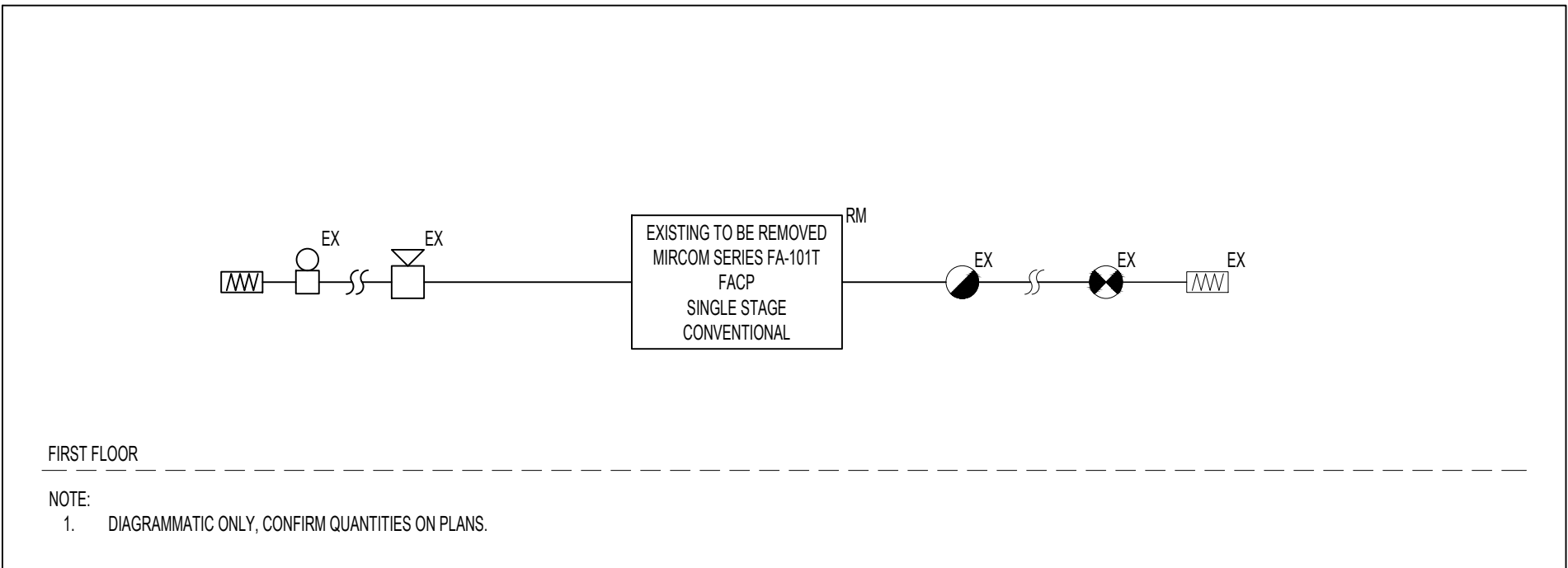
NEW FIRE ALARM NAC LIST	
ALARM ZONE	DESCRIPTION
1	HORN/STROBE DEVICES
2	VISUAL STROBES
3	SPARE
4	SPARE

NOTE:
1. PROVIDE MINIMUM SPARE ALARM ZONES, SUPERVISORY ZONES
AND NAC AS SHOWN.

STANDARD MOUNTING HEIGHTS	
FIRE ALARM HORN/STROBE	2350 mm TO TOP OF DEVICE (ADJUST IN ANY CASE FOR A MINIMUM OF 150 mm SPACE BETWEEN THE CEILING AND THE TOP OF DEVICE)

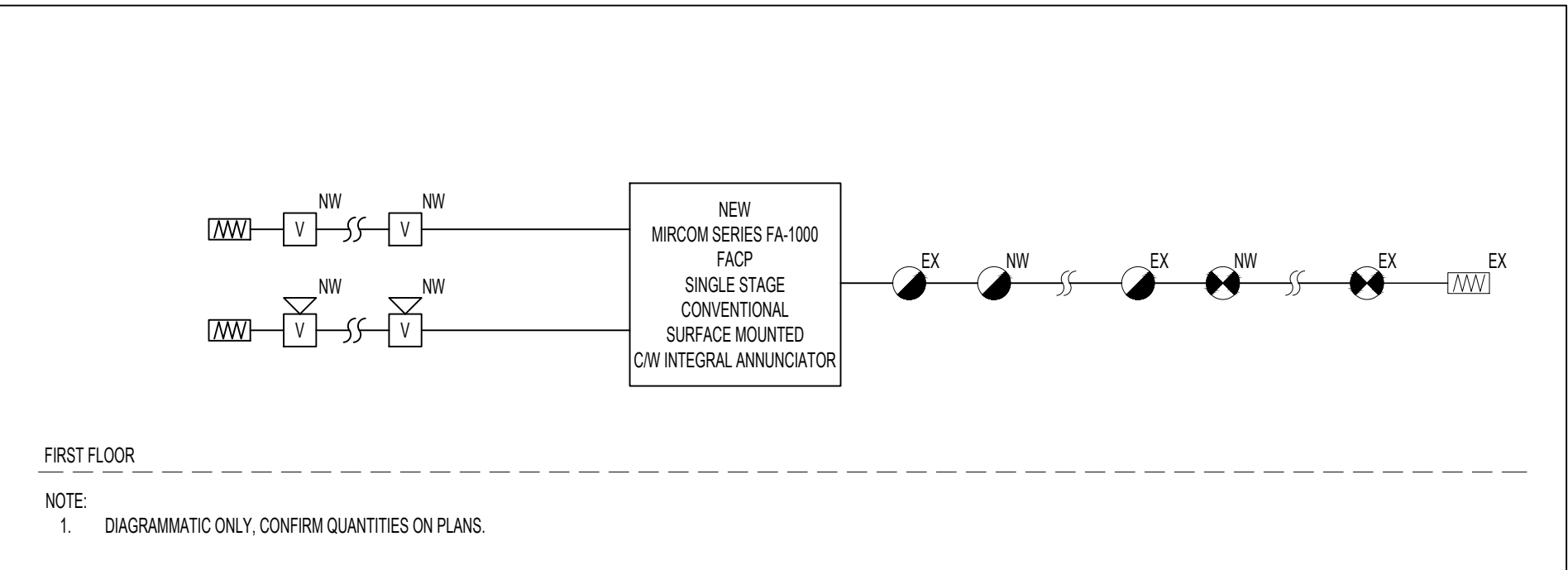
ABBREVIATION TABLE	
CM	CEILING MOUNTED
ER	EXISTING TO BE RELOCATED
EX	EXISTING TO REMAIN
RL	RELOCATED ITEM
RM	EXISTING TO BE REMOVED
NW	NEW

FIRE DETECTION LEGEND	
	FIRE ALARM CONTROL PANEL, SINGLE STAGE, CONVENTIONAL MIRCOM SERIES FA-1000 OR EQUIVALENT, SURFACE MOUNTED C/W INTEGRAL ANNUNCIATOR.
	SMOKE DETECTOR
	HEAT DETECTOR, RATE OF RISE
	END-OF-LINE (EOL) TERMINATOR RESISTOR
	FIRE ALARM HORN, 'V' INDICATES C/W VISUAL STROBE DEVICE
	EXISTING FIRE ALARM BELL
	FIRE ALARM VISUAL STROBE DEVICE
	EXISTING RESIDENTIAL TYPE SMOKE ALARM



EXISTING FIRE ALARM RISER

SCALE: N.T.S.



NEW FIRE ALARM RISER

SCALE: N.T.S.

ELECTRICAL LEGENDS AND SCHEDULES

SCALE: N.T.S.

CLIENT:

NIAGARA REGION
1815 SIR ISSAC BROCK WAY
THOROLD ONTARIO
L2V 4T7

PROJECT:

25 BRUCE STREET
AUDIBLE / VISUAL FIRE ALARMS

SHEET TITLE:

ELECTRICAL NOTES,
LOCATION PLAN,
ELECTRICAL LEGENDS AND
SCHEDULES, AND
FIRE ALARM RISER DIAGRAMS

JOB NUMBER: 230610

DATE: JULY, 2023

DRAWN BY: KL

DESIGNED BY: KL

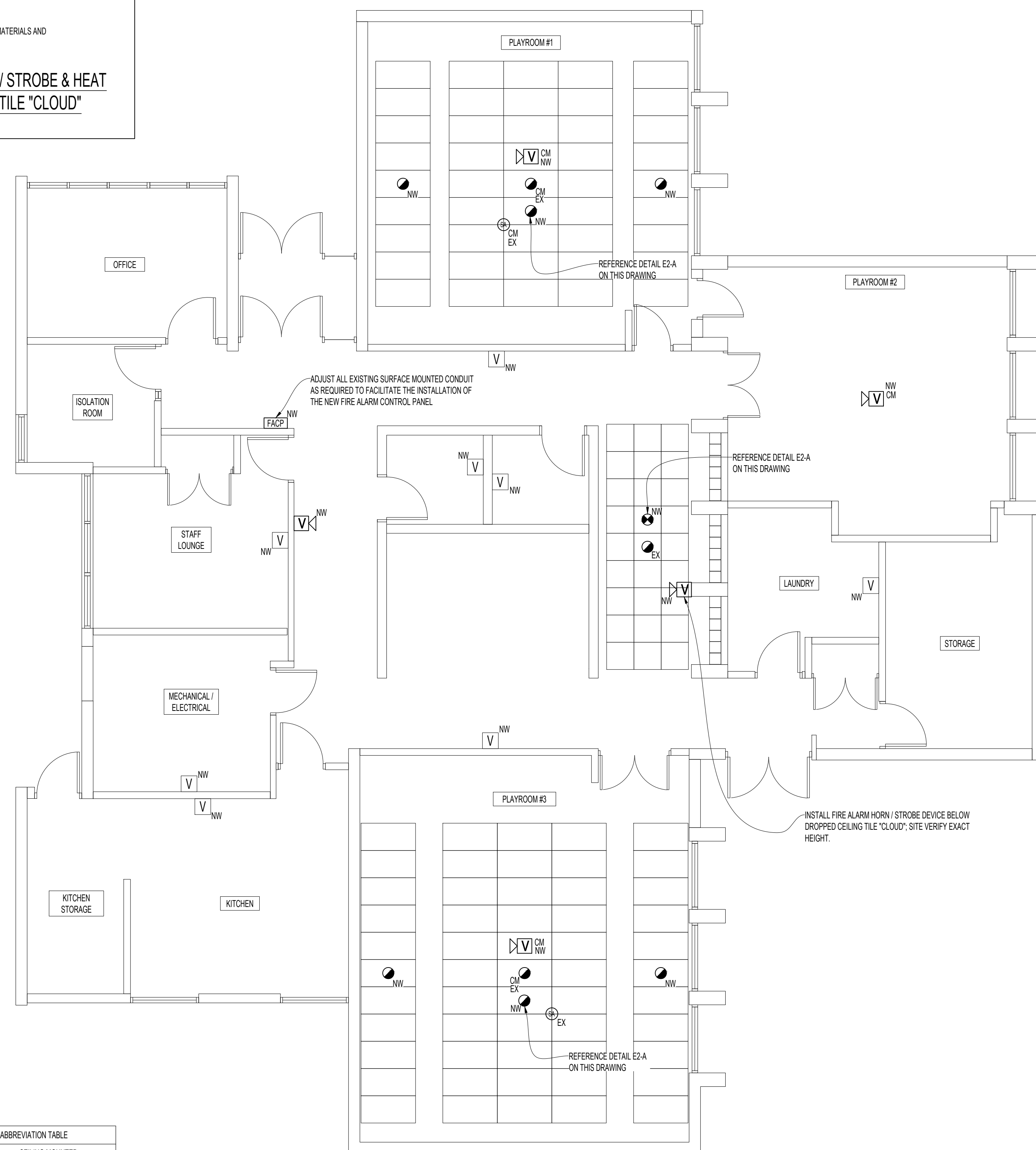
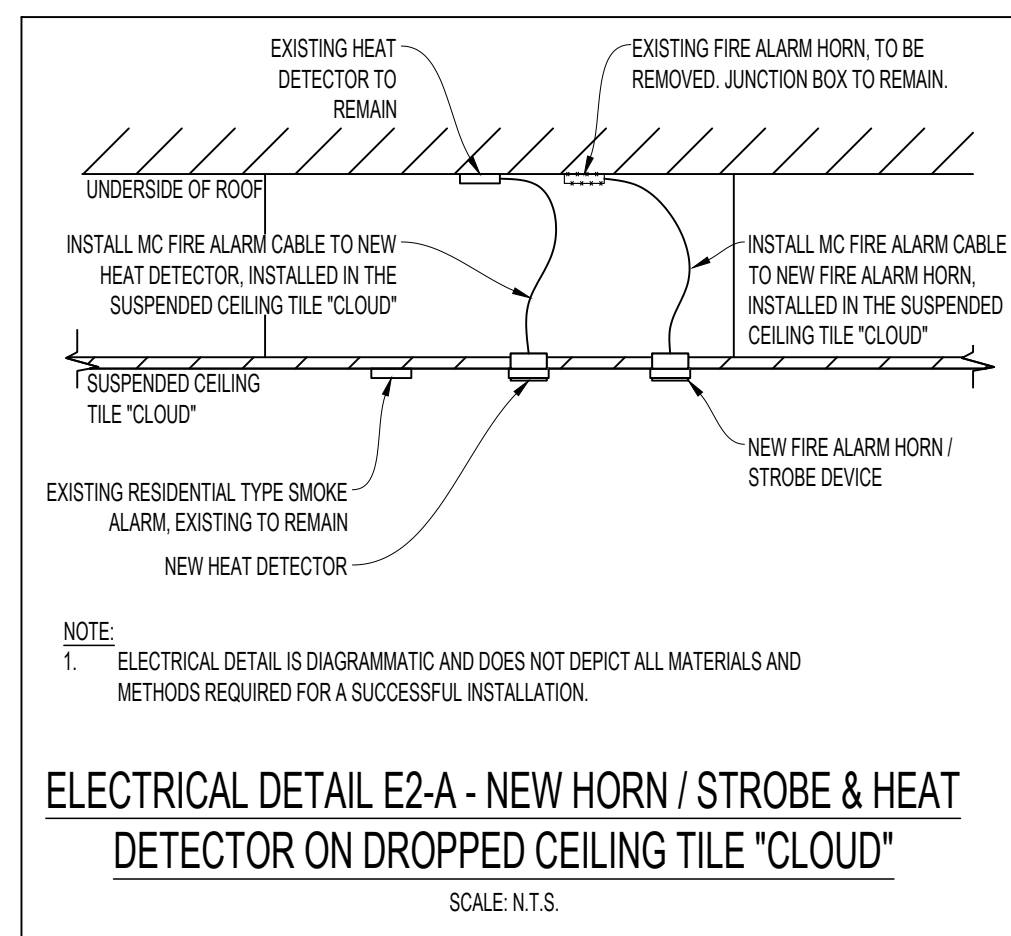
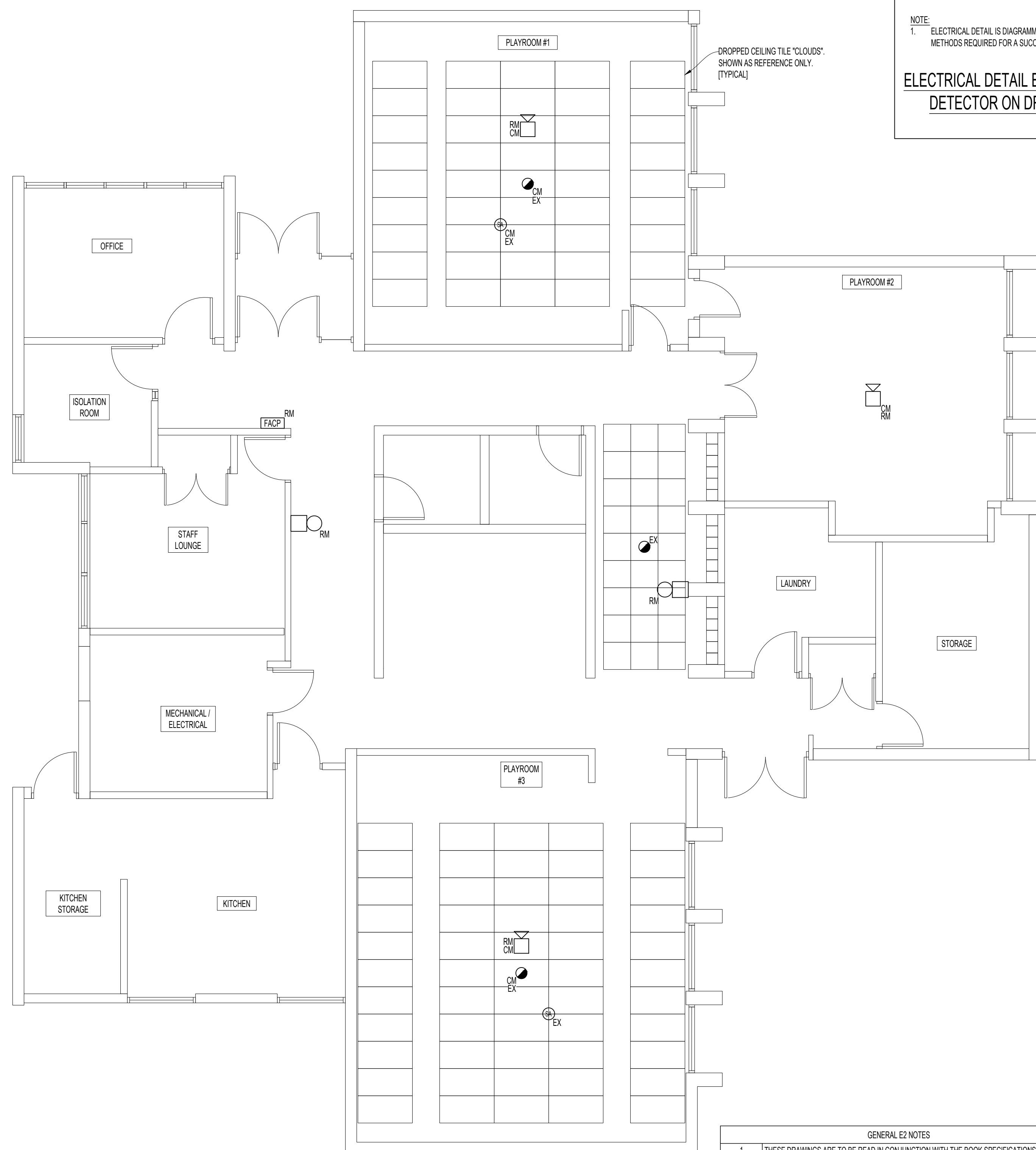
CHECKED BY: MW / JD

SCALE: AS SHOWN

DWG.

E1

REV. 0

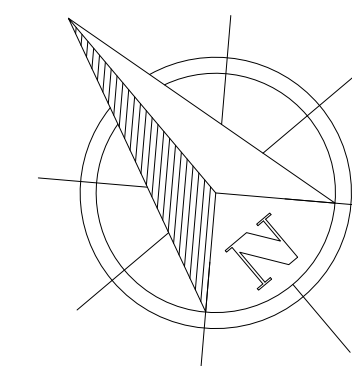


	GENERAL EX NOTES
1	THESE DRAWINGS ARE TO BE READ IN CONJUNCTION WITH THE BOOK SPECIFICATIONS.
	ROUTING OF CONDUITORS (CONDUIT) TO BE ABOVE FINISHED DROPPED CEILING, WHERE BULKHEADS INTERFERE, CONDUIT IS TO BE ROUTED AROUND BULKHEAD NEATLY, THEY SHALL BE NEATLY TIED TO THE EQUIP AND TO THE CONDUIT. (L-WRITINGS AS REQUIRED, WHEN CONDUITS IN CONDUIT ARE TO BE ROUTED BELOW THE DROPPED CEILING, THEY SHALL BE ROUTED NEATLY IN SURFACE MOUNTED CONDUIT.
2	THIS CONTRACTOR IS RESPONSIBLE FOR REMOVING CEILING TILES AS REQUIRED TO INSTALL NEW CONDUITORS IN CONDUIT TO ALL PROPOSED FIRE ALARM DEVICES. THIS CONTRACTOR IS RESPONSIBLE FOR REPLACING ANY AND ALL CEILING TILES THAT ARE DAMAGED DURING INSTALLATION WITH EQUIVALENT CEILING TILES.
3	ALL SURFACE MOUNTED DEVICES AND CONDUIT SHALL BE KEPT TO A MINIMUM. WHERE CONDUIT DEVICES ARE REQUIRED TO BE SURFACE MOUNTED, INSTALLATIONS (S) SHALL BE NEAT AND SQUARE TO ALL ADJACENT SURFACES. SURFACE MOUNTED CONDUITORS ARE TO BE MADE IN CONDUIT, EXPOSED AND VISIBLE AS A NOT ACCEPTABLE. SURFACE MOUNTED DEVICE BOXES (SINGLE GANG, DOUBLE GANG, ETC) ARE TO BE DIE-CAST ALUMINUM OR EQUIVALENT, OR MANUFACTURER PROVIDED SURFACE MOUNT BACK BOX. NO KNOCKOUTS ARE TO BE VISIBLE.
4	ADJUST LOCATION OF THE PROPOSED STROBE DEVICES AS REQUIRED TO AVOID ANY CONFLICTS WITH EXISTING CONDITION.

ABBREVIATION TABLE	
CM	CEILING MOUNTED
ER	EXISTING TO BE RELOCATED
EX	EXISTING TO REMAIN
RL	RELOCATED ITEM
RM	EXISTING TO BE REMOVED
NW	NEW

DEMOLITION PLAN

FIRE ALARM PLAN



Do not scale drawings. Report any discrepancies to Hallex Engineering Ltd. before proceeding.

This drawing must be signed and sealed by the Engineer prior to use in construction or submission for building permit.

All construction shall be in accordance with latest edition of the Ontario Building Code and all applicable Ontario regulations.

No part of this drawing including details, calculations or schedules may be reproduced in any form, either in part or whole, without the prior written consent of Hallex Engineering Ltd.



745 South Service Rd. Unit 301A,
Stoney Creek, ON L8E 5Z2
Tel: 905-561-4016

4999 Victoria Ave.,
Niagara Falls, ON L2E 4C9
Tel: 905-357-4015 Fax: 905-353-1105

[illegible]

CLIENT:

NIAGARA REGION
1815 SIR ISSAC BROCK WAY
THOROLD ONTARIO
L2V 4T7

PROJECT:

25 BRUCE STREET
AUDIBLE / VISUAL FIRE ALARMS

SHEET TITLE:
DEMOLITION &
FIRE ALARM PLANS

JOB NUMBER: 230610	
DATE: JULY, 2023	
DRAWN BY: KL	
DESIGNED BY: KL	
CHECKED BY: MW / JD	
SCALE: AS SHOWN	
DWG. E2	REV. 0