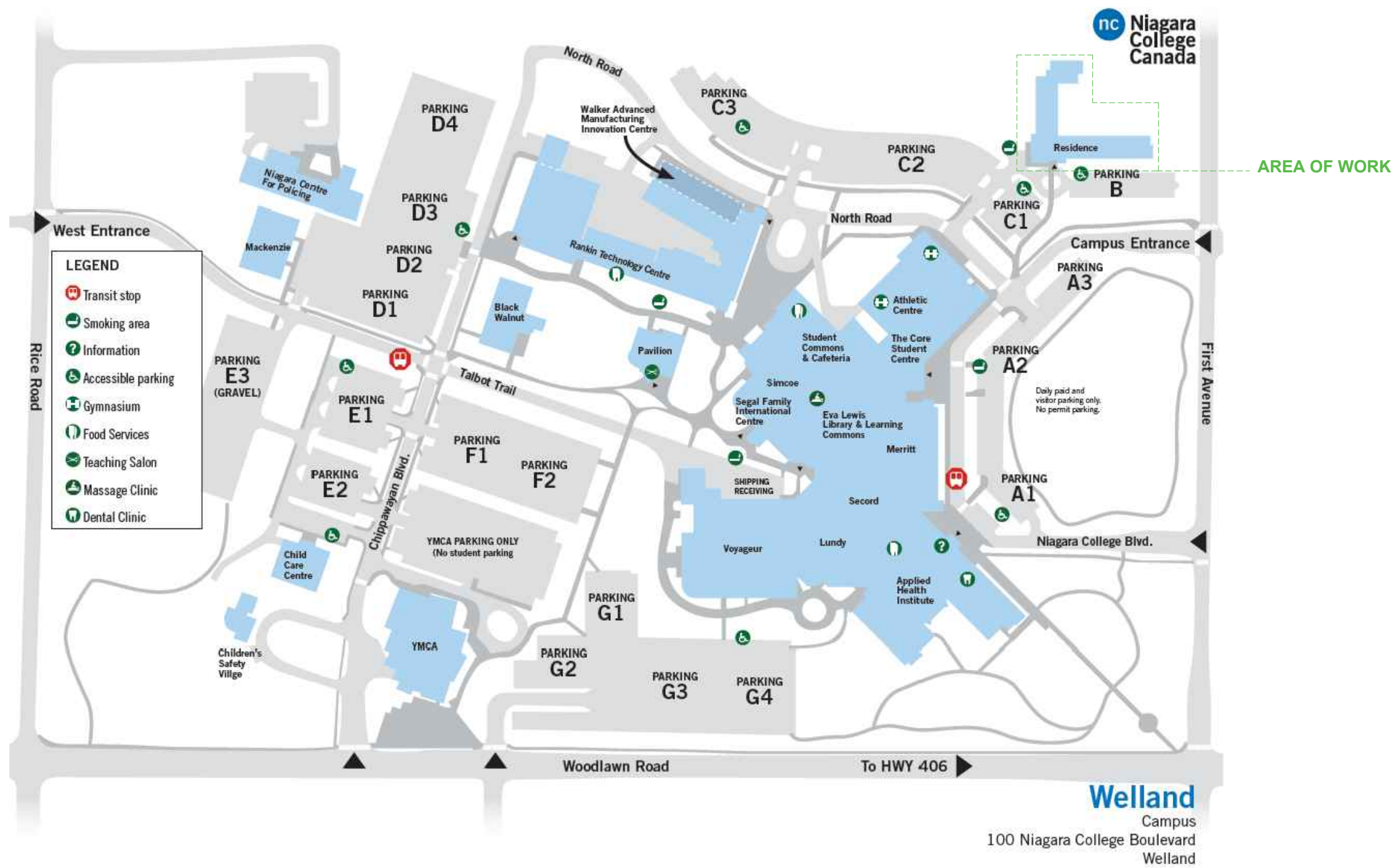


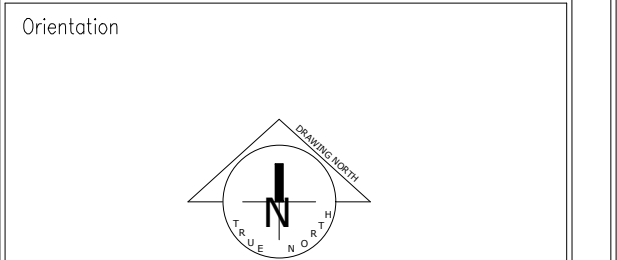
# NIAGARA COLLEGE RESIDENCE BUILDING HALLWAY REFRESH - WELLAND CAMPUS



- LIST OF DRAWINGS:**
- A100 COVER PAGE
  - A101 FIRST-FLOOR PLAN
  - A102 SECOND-FLOOR PLAN
  - A103 THIRD-FLOOR PLAN
  - A104 THIRD-FLOOR REFLECTED CEILING PLAN

The Contractor/Consultant shall check and verify all dimensions and report all errors and omissions to the College's Designee (as applicable) for his/her written direction before proceeding with the Work.

A Detail No  
B Sheet No where detailed



Consultant

Seal

#	ISSUED FOR TENDER	3/21/2024
No	Revisions	Date

Project  
**HALLWAY REFRESH  
NIAGARA COLLEGE  
RESIDENCE BUILDING**

Location  
110 NIAGARA COLLEGE BLVD,  
WELLAND, ON

Campus  
Welland  
Building  
Residence  
Floor No  
1, 2 & 3

Project No  
P01078

Requestor  
NIAGARA COLLEGE

Drawing Title  
**COVER PAGE**

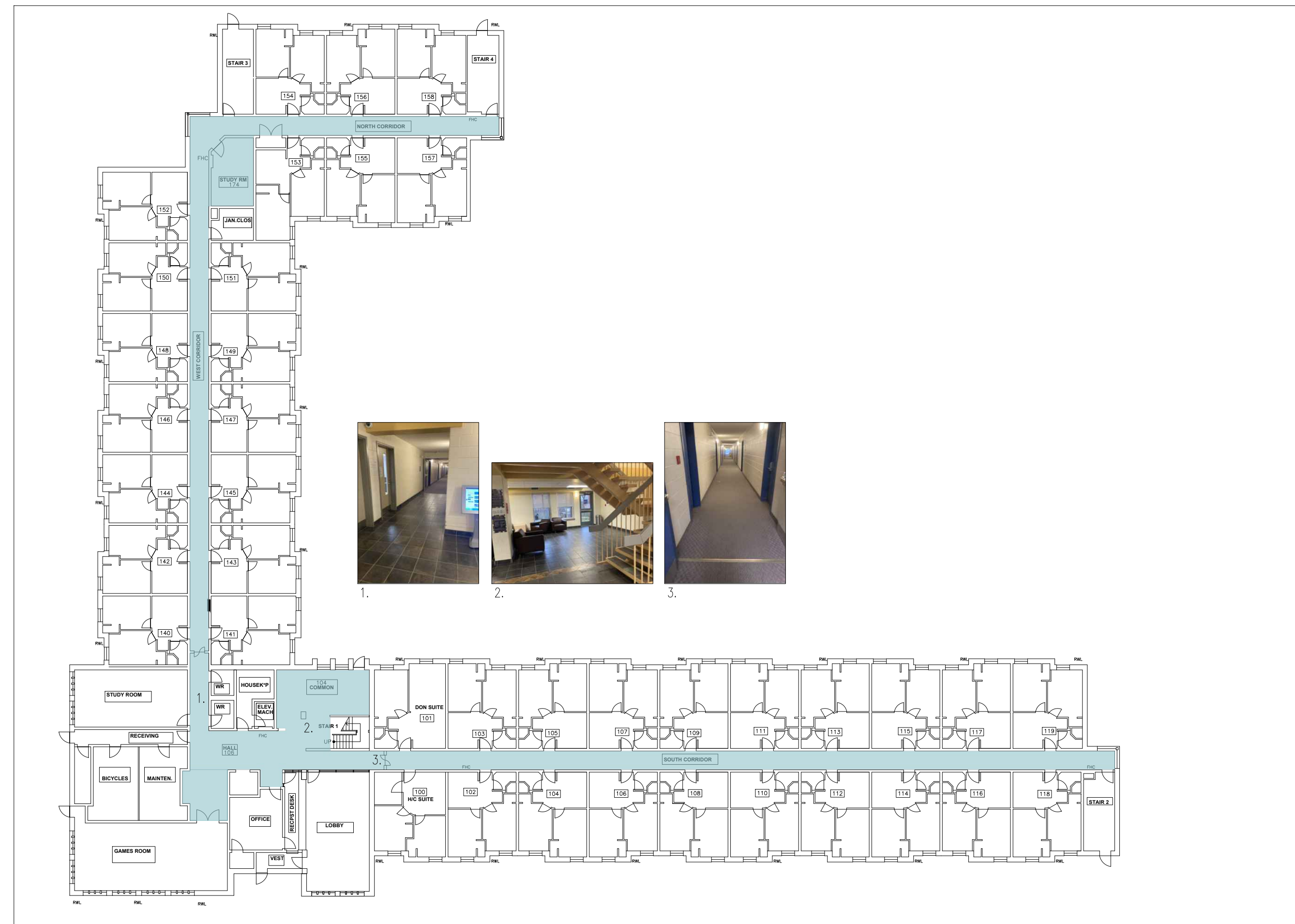
Date Created 03/21/2024

Scale As Shown Project Start Date

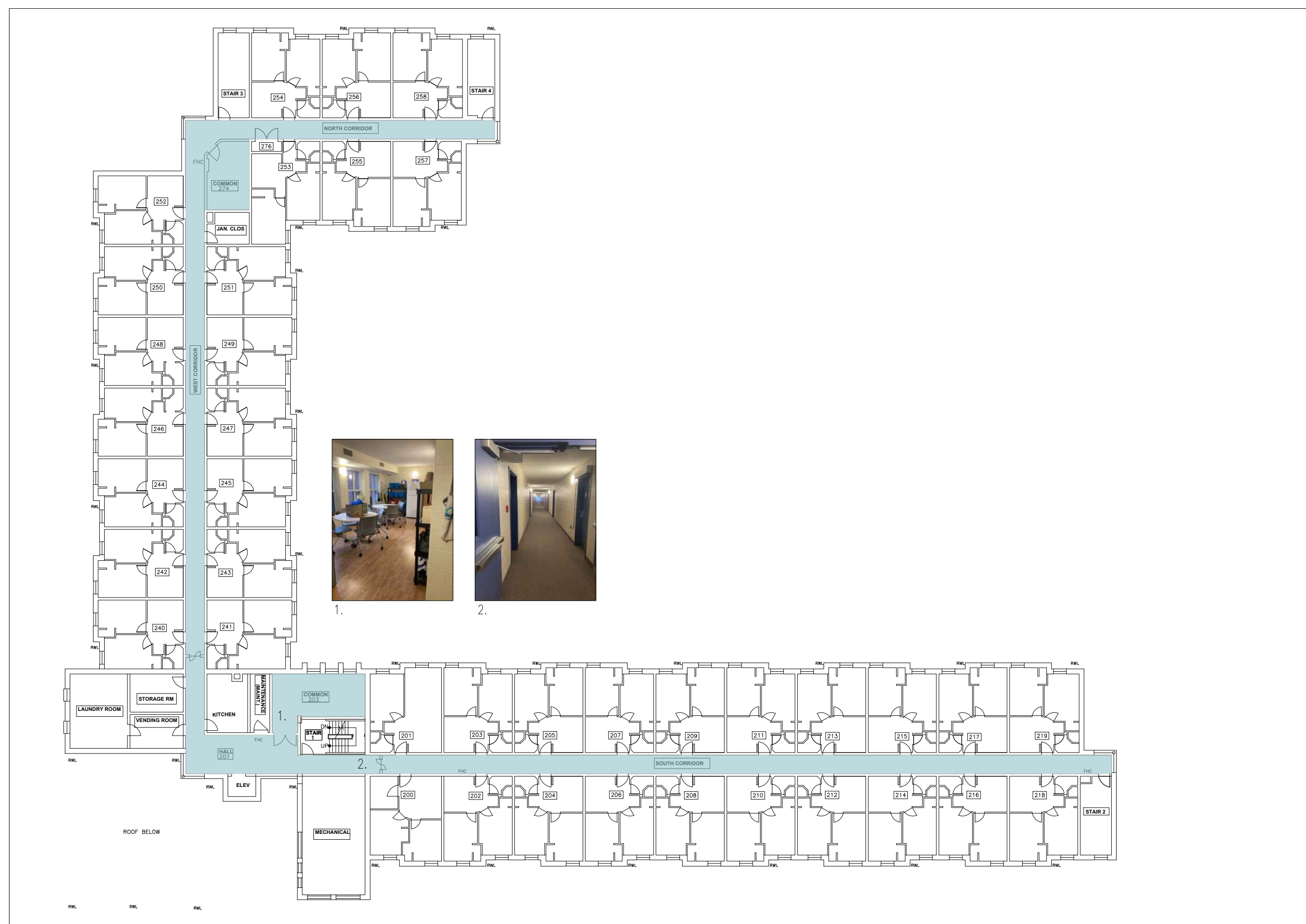
Drawn by NN Substantial Performance Date 06/14/2024

Designed by Sheet No

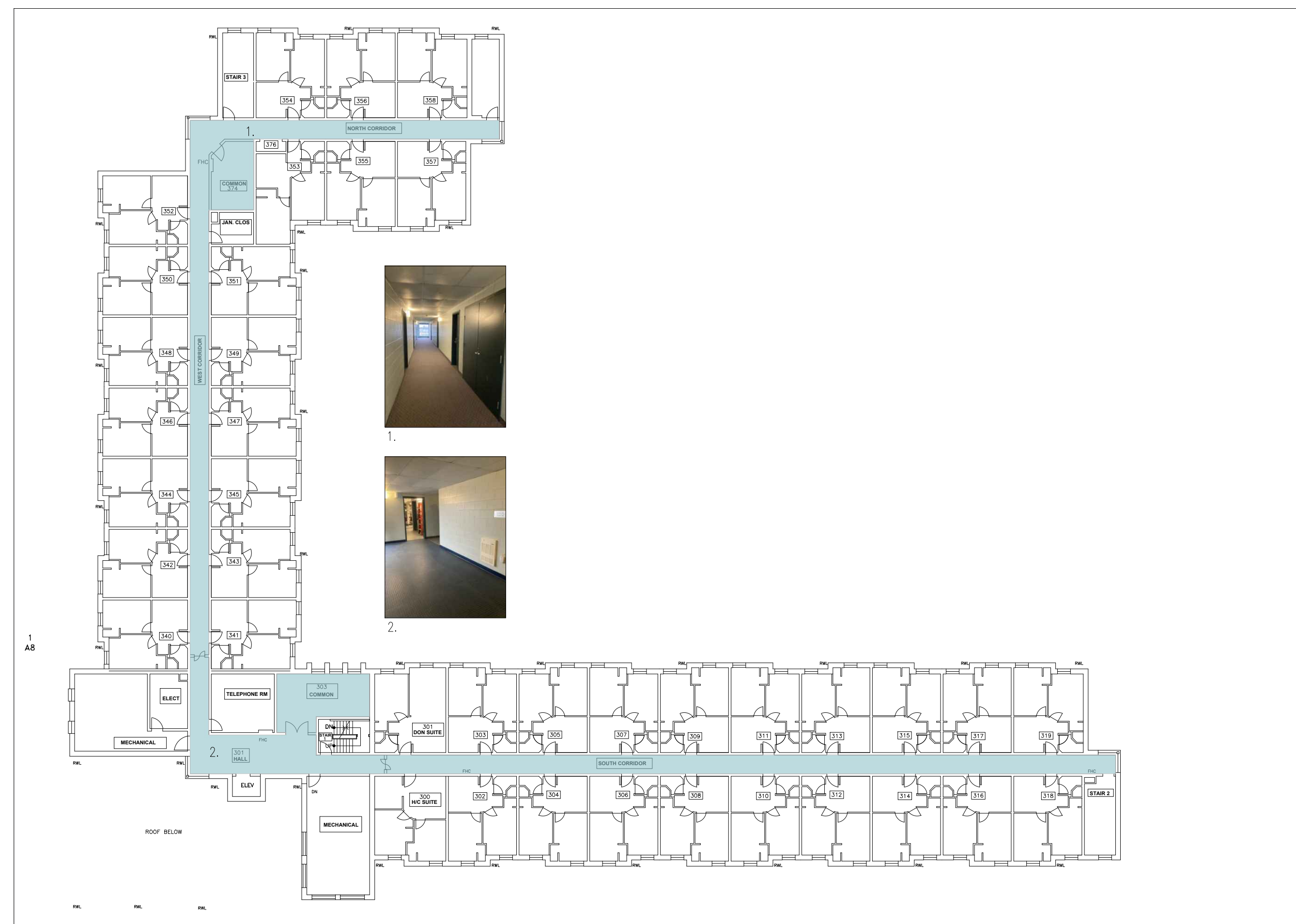
Approved by **A100**



1 WC RESIDENCE BUILDING - FIRST FLOOR  
SC 1:300



2 WC RESIDENCE BUILDING - SECOND FLOOR  
SC 1:300

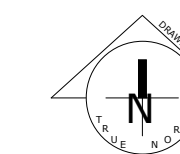


3 WC RESIDENCE BUILDING - THIRD FLOOR  
SC 1:300

The Contractor/Consultant shall check and verify all dimensions and report all errors and omissions to the College's Designee (as applicable) for his/her written direction before proceeding with the Work.

A Detail No  
B Sheet No where detailed

Orientation



Consultant

Seal

#1 ISSUED FOR TENDER 3/21/2024

No Revisions Date

Project  
**HALLWAY REFRESH  
NIAGARA COLLEGE  
RESIDENCE BUILDING**

Location  
110 NIAGARA COLLEGE BLVD,  
WELLAND, ON

Campus  
Welland

Building  
Residence

Floor No  
1, 2 & 3

Project No  
P01078

Requestor  
**NIAGARA COLLEGE**

Drawing Title  
**FIRST FLOOR PLAN**

Date Created 03/21/2024

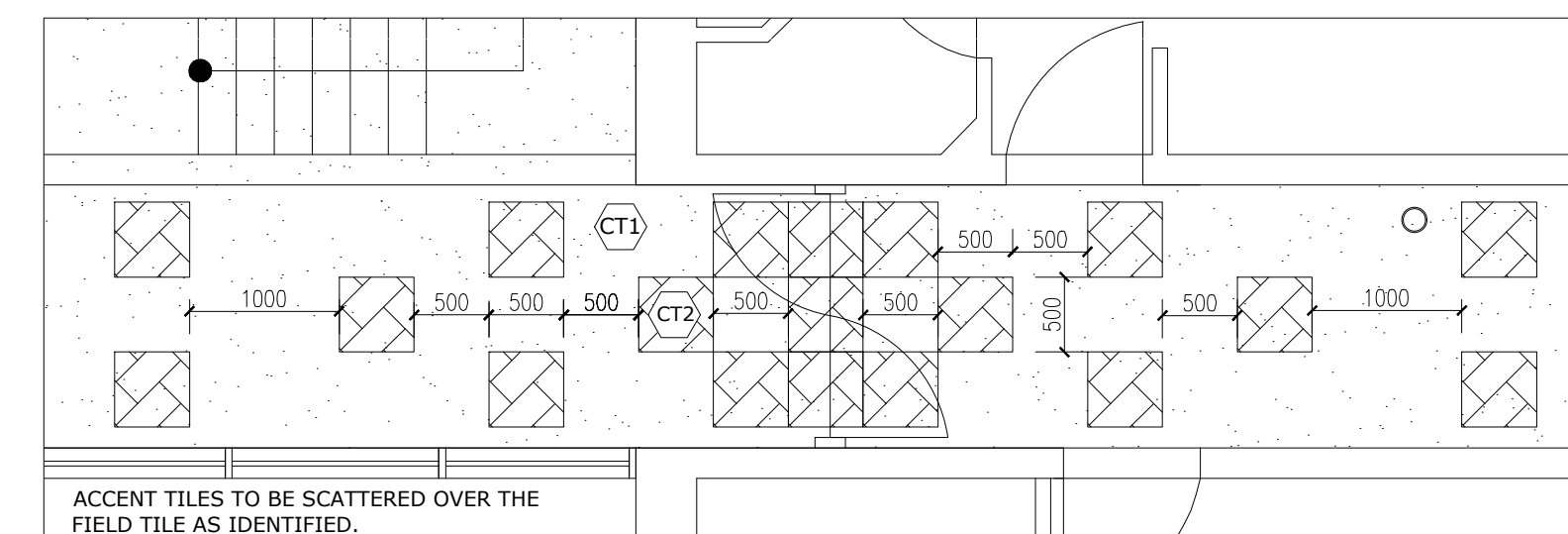
Scale As Shown Project Start Date

Drawn by NN Substantial Performance Date 06/14/2024

Designed by Sheet No

Approved by **A101**

CADD File NAME P01078\_WC RE BLDG CORRIDOR REFRESH.DWG



ACCENT TILES TO BE SCATTERED OVER THE FIELD TILE AS IDENTIFIED.

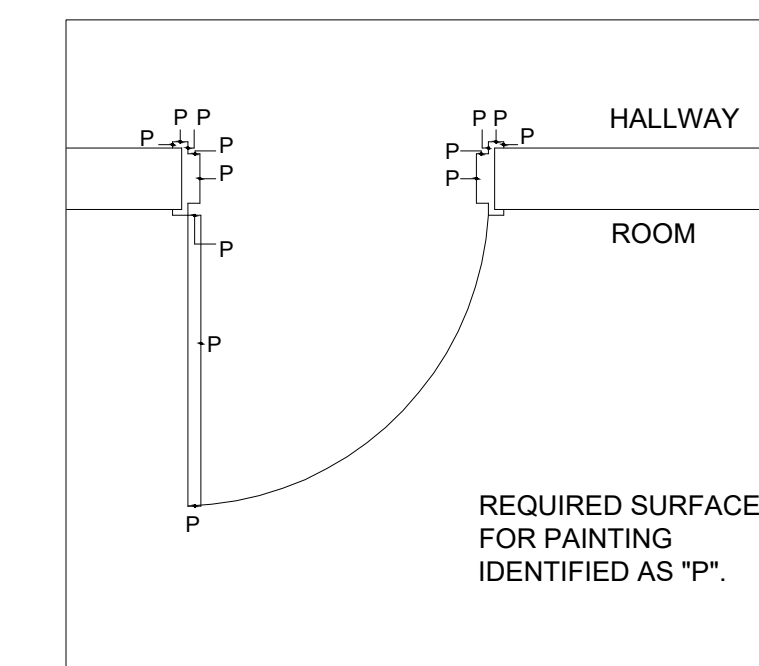
3 ACCENT TILES CONFIGURATION - DETAIL 1  
A101 SC 1:50

CODE	TYPE/ MANUFACTURER	LOCATION	TYPE HATCH	IMAGE
CT1	CARPET - THE STANDARD 106177 CONCRETE.	HALLWAYS- FIELD TILE- ALL FLOORS	[Hatch]	[Image]
CT2	CARPET - THE STANDARD 106189 LAZULI.	HALLWAYS- ACCENT TILES AND COMMON ROOMS- MAIN FLOOR	[Hatch]	[Image]
CT3	CARPET - THE STANDARD 106188 LARIMAR.	HALLWAYS- ACCENT TILES AND COMMON ROOMS- SECOND FLOOR	[Hatch]	[Image]
CT4	CARPET - THE STANDARD 009364 BLUEFISH.	HALLWAYS- ACCENT TILES AND COMMON ROOMS- THIRD FLOOR	[Hatch]	[Image]

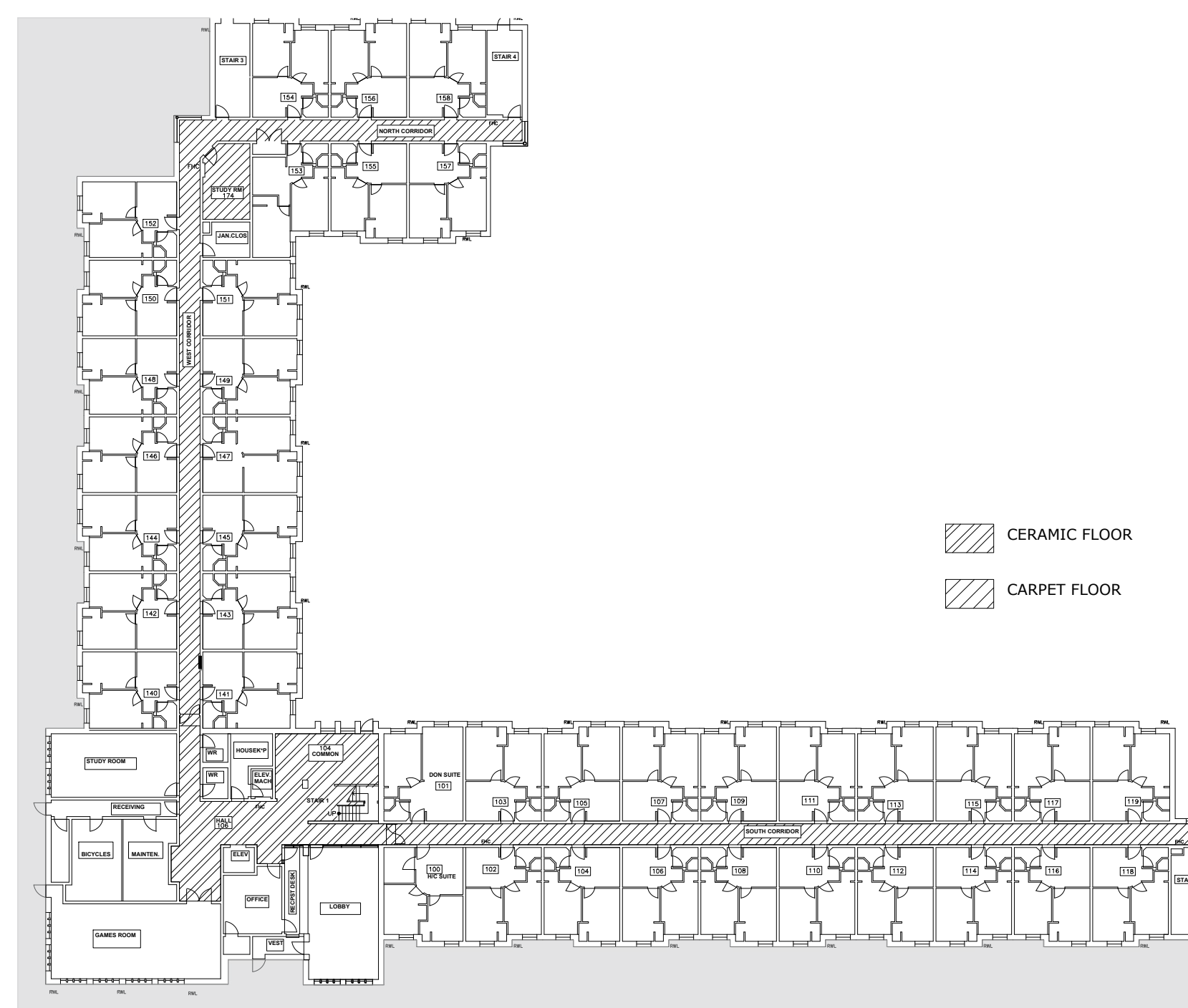
CODE	PAINT	MANUFACTURER/COLOUR	IMAGE
PT1	WALLS AS NOTED - FIELD COLOR- HALLWAYS AND ROOMS	BENJAMIN MOORE 'ICICLE': OC-60; HIGH GLOSS DIAMOND FINISH, PREMIUM GRADE.	[Image]
PT2	ACCENT WALLS AS NOTED- FIRST FLOOR HALLWAY	PMS 285 C; HIGH GLOSS DIAMOND FINISH, PREMIUM GRADE.	[Image]
PT3	ACCENT WALLS AS NOTED- FIRST FLOOR COMMON ROOMS	PMS 637 C; HIGH GLOSS DIAMOND FINISH, PREMIUM GRADE.	[Image]
PT4	ACCENT WALLS AS NOTED- SECOND FLOOR HALLWAY	PMS 423 C; HIGH GLOSS DIAMOND FINISH, PREMIUM GRADE.	[Image]
PT5	ACCENT WALLS AS NOTED- SECOND FLOOR COMMON ROOMS	DULUX 'SOLSTICE': DLX1010-3; HIGH GLOSS DIAMOND FINISH, PREMIUM GRADE.	[Image]
PT6	ACCENT WALLS AS NOTED- THIRD FLOOR HALLWAY	PMS 7486 C; HIGH GLOSS DIAMOND FINISH, PREMIUM GRADE.	[Image]
PT7	ACCENT WALLS AS NOTED- THIRD FLOOR COMMON ROOMS	PMS 585 C; HIGH GLOSS DIAMOND FINISH, PREMIUM GRADE.	[Image]
PT8	DOORS AND FRAMES AS NOTED	DULUX 'ZOMBIE': DLX1010-7; SEMI-GLOSS FINISH, PREMIUM GRADE.	[Image]
PT9	WINDOW SILLS AS NOTED	DULUX 'BLUE JEWEL': DLX1167-7; EGGSHELL FINISH, PREMIUM GRADE.	[Image]
PT10	ELEVATOR DOOR	MATCH EXISTING.	N/A

DOOR NO.	ROOM	FINISH		REMARKS
		DOOR	FRAME	
#100	SUITE	PT 8	PT 8	PAINT ONLY CORRIDOR SIDE.
#101	SUITE	PT 8	PT 8	
#102	SUITE	PT 8	PT 8	
#103	SUITE	PT 8	PT 8	
#104	SUITE	PT 8	PT 8	
#105	SUITE	PT 8	PT 8	
#106	SUITE	PT 8	PT 8	
#107	SUITE	PT 8	PT 8	
#108	SUITE	PT 8	PT 8	
#109	SUITE	PT 8	PT 8	
#110	SUITE	PT 8	PT 8	
#111	SUITE	PT 8	PT 8	
#112	SUITE	PT 8	PT 8	
#113	SUITE	PT 8	PT 8	
#114	SUITE	PT 8	PT 8	
#115	SUITE	PT 8	PT 8	
#116	SUITE	PT 8	PT 8	
#117	SUITE	PT 8	PT 8	
#118	SUITE	PT 8	PT 8	
#119	SUITE	PT 8	PT 8	
#140	SUITE	PT 8	PT 8	
#141	SUITE	PT 8	PT 8	
#142	SUITE	PT 8	PT 8	
#143	SUITE	PT 8	PT 8	
#144	SUITE	PT 8	PT 8	
#145	SUITE	PT 8	PT 8	
#146	SUITE	PT 8	PT 8	
#147	SUITE	PT 8	PT 8	
#148	SUITE	PT 8	PT 8	
#149	SUITE	PT 8	PT 8	
#150	SUITE	PT 8	PT 8	
#151	SUITE	PT 8	PT 8	
#152	SUITE	PT 8	PT 8	
#153	SUITE	PT 8	PT 8	
#154	SUITE	PT 8	PT 8	
#155	SUITE	PT 8	PT 8	
#156	SUITE	PT 8	PT 8	
#157	SUITE	PT 8	PT 8	
#158	SUITE	PT 8	PT 8	

DOOR NO.	ROOM	FINISH		REMARKS
		DOOR	FRAME	
#1	LOBBY	PT 8	PT 8	PAINT ONLY CORRIDOR SIDE.
#2	RECEIPT DESK	PT 8	PT 8	PAINT ONLY CORRIDOR SIDE.
#3	OFFICE	PT 8	PT 8	PAINT ONLY CORRIDOR SIDE.
#4	SOUTH CORRIDOR	PT 8	PT 8	PAINT BOTH SIDES. INSTALL A STAINLESS STEEL KICK PLATE. KICK PLATE TO BE HALF-HEIGHT OF THE DOOR.
#5	EMERGENCY DOOR	EXIT	EXT	NO PAINTING IS REQUIRED.
#6	ELEVATOR DOOR	PT 10	PT 10	PAINT ONLY CORRIDOR SIDE.
#7	GAMES ROOM	PT 8	PT 8	PAINT ONLY CORRIDOR SIDE.
#8	RECEIVING	PT 8	PT 8	PAINT ONLY CORRIDOR SIDE. INSTALL A STAINLESS STEEL KICK PLATE. KICK PLATE TO BE HALF-HEIGHT OF THE DOOR.
#9	STUDY ROOM	PT 8	PT 8	PAINT ONLY CORRIDOR SIDE. INSTALL A STAINLESS STEEL KICK PLATE. KICK PLATE TO BE HALF-HEIGHT OF THE DOOR.
#10	HOUSEKEEPING	PT 8	PT 8	PAINT ONLY CORRIDOR SIDE. INSTALL A STAINLESS STEEL KICK PLATE. KICK PLATE TO BE HALF-HEIGHT OF THE DOOR.
#11	WASHROOM	PT 8	PT 8	PAINT ONLY CORRIDOR SIDE. INSTALL A STAINLESS STEEL KICK PLATE. KICK PLATE TO BE HALF-HEIGHT OF THE DOOR.
#12	WASHROOM	PT 8	PT 8	PAINT ONLY CORRIDOR SIDE. INSTALL A STAINLESS STEEL KICK PLATE. KICK PLATE TO BE HALF-HEIGHT OF THE DOOR.
#13	WEST CORRIDOR	PT 8	PT 8	PAINT BOTH SIDES. INSTALL A STAINLESS STEEL KICK PLATE. KICK PLATE TO BE HALF-HEIGHT OF THE DOOR.
#14	JAN CLOSET	PT 8	PT 8	PAINT ONLY CORRIDOR SIDE. INSTALL A STAINLESS STEEL KICK PLATE. KICK PLATE TO BE HALF-HEIGHT OF THE DOOR.
#15	STUDY RM - 174	PT 8	PT 8	PAINT BOTH SIDES.
#16	STAIR 3	PT 8	PT 8	PAINT ONLY CORRIDOR SIDE. INSTALL A STAINLESS STEEL KICK PLATE. KICK PLATE TO BE HALF-HEIGHT OF THE DOOR.
#17	ROOM 176	PT 8	PT 8	PAINT ONLY CORRIDOR SIDE.
#18	STAIR 4	PT 8	PT 8	PAINT ONLY CORRIDOR SIDE. INSTALL A STAINLESS STEEL KICK PLATE. KICK PLATE TO BE HALF-HEIGHT OF THE DOOR.
#19	STAIR 2	PT 8	PT 8	PAINT ONLY CORRIDOR SIDE. INSTALL A STAINLESS STEEL KICK PLATE. KICK PLATE TO BE HALF-HEIGHT OF THE DOOR.

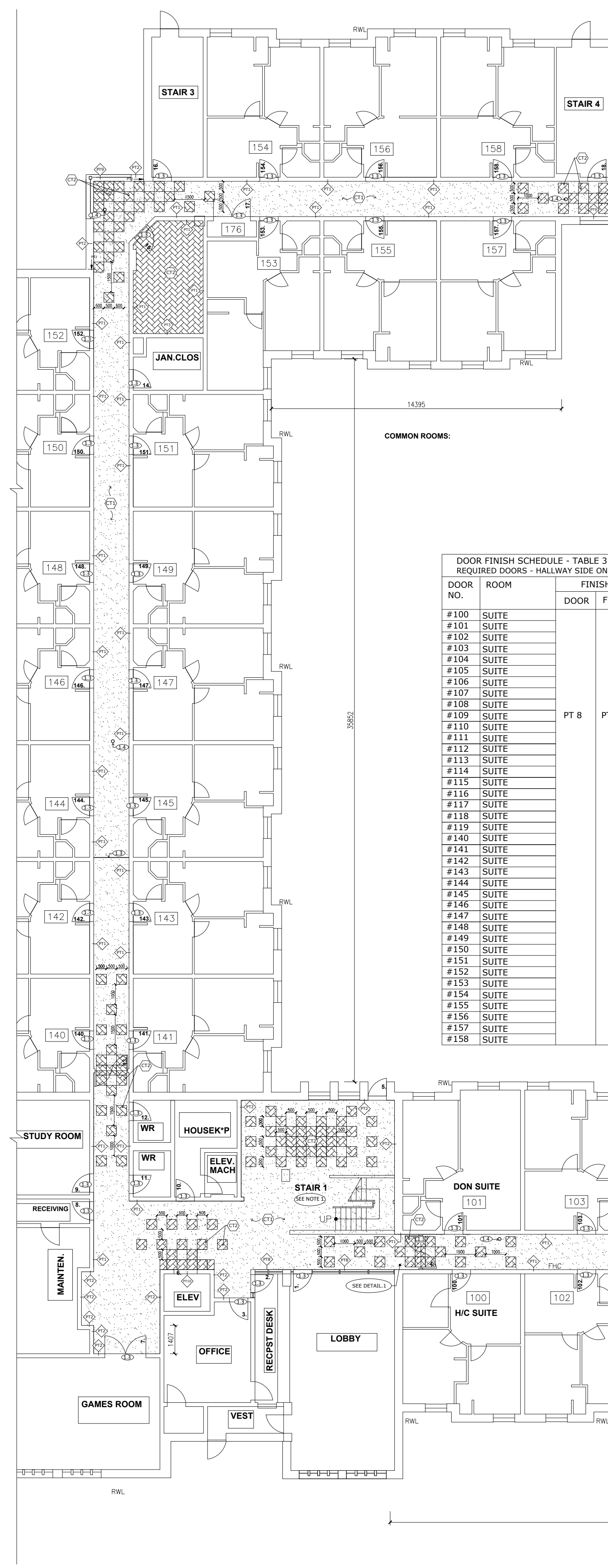


4 REQUIRED PAINTING SURFACES- TYPICAL DOOR  
A101 SC 1:25



1 WC RESIDENCE BUILDING - LEVEL 1 - EXISTING FLOORING FINISHES  
A101 SC 1:400

- DEMOLITION NOTES:**
- ON FIRST, SECOND AND THIRD FLOORS, WHERE NEW FLOORING IS REQUIRED, REMOVE AND DISPOSE OF EXISTING FLOORING AND ALL ADHESIVE AND CORRESPONDING TRANSITION STRIPS AND WALL BASES; MAKE GOOD ALL FLOOR SURFACES TO RECEIVE NEW FLOORING AS SPECIFIED. CONTRACTOR MUST PREPARE THE SUBSTRATE TO ENSURE AN ADEQUATE SYSTEM PERFORMANCE. THE SUBSTRATE MUST BE DRY AND PROPERLY PREPARED. CONTRACTOR TO REVIEW EXISTING FLOOR TO ENSURE LEVELNESS OF EXISTING SUB-FLOOR IS ACCEPTABLE AS PER MANUFACTURER'S INSTALLATION REQUIREMENTS. IF LEVELING IS REQUIRED INCLUDE IT IN QUOTE.
  - ON THE THIRD FLOOR REMOVE AND DISPOSE OF EXISTING CEILING PANELS IN CORRIDORS AS IDENTIFIED ON 1/A104. EXISTING GRID TO REMAIN.
  - CONTRACTOR TO REVIEW ALL CONTRACT DOCUMENTS TO DETERMINE THE EXTENT OF DEMOLITION.
  - CONTRACTOR SHALL BE RESPONSIBLE FOR PROVIDING ALL LABOUR, EQUIPMENT, AND SERVICES TO PROPERLY EXECUTE THE DEMOLITION AND REMOVAL WORK.
  - ALL WASTE IS TO BE DISPOSED OF IN BINS PROVIDED BY CONTRACTOR AND ACCORDING TO LOCAL RULES AND REGULATIONS. BIN LOCATION ON SITE TO BE COORDINATED WITH COLLEGE STAFF.
  - ALL DEMOLITION WORK SHALL BE PERFORMED WITH MINIMUM DAMAGE TO THE EXISTING WORK TO REMAIN. IT SHALL BE RECOGNIZED THAT THE UTMOST CARE BE TAKEN WHEN PERFORMING THE DEMOLITION WORK. PROVIDE BARRICADES WHERE IT IS REQUIRED TO PROTECT THE PUBLIC.
  - PROVISIONS SHALL BE MADE TO ALLEVIATE THE SPREAD OF DEBRIS, DIRT, AND DUST TO ADJACENT SPACES. THE PROPERTY SHALL BE KEPT CLEAN AS MUCH AS POSSIBLE AT ALL TIMES.
  - WHERE DEMOLITION AND CUTTING WORK HAS OCCURRED OR WHERE EXISTING SURFACES, MATERIALS, OR OTHER ITEMS HAVE BEEN DAMAGED OR DISTURBED, AS A RESULT OF THIS CONTRACT, THE SAID SURFACES AND AREA SHALL BE CAREFULLY CLOSED UP, PATCHED, AND FINISHED AND/OR RESTORED AS REQUIRED TO BE CONTIGUOUS TO EXISTING SURROUNDING SURFACES.
  - COLLEGE TO ARRANGE FOR REMOVAL OF FURNITURE FROM ALL AREAS PRIOR TO GENERAL CONTRACTOR MOBILIZATION.
- CONSTRUCTION NOTES:**
- FLOORING**
    - SUPPLY AND INSTALL CARPET TILES: THE STANDARD, 50cm x 50cm. REFER TO TABLE 1 AND FLOOR PLANS. INSTALL IN NON DIRECTIONAL PATTERN. ACCENT TILES TO BE SCATTERED OVER THE FIELD TILE AS IDENTIFIED.
    - RUBBER BASE
      - RUBBER BASE TO BE SUPPLIED AND INSTALLED AT THE NEW FLOOR: Tarkett / Johnsonite Traditional Vinyl Wall Base #20 Charcoal 4" x 120' Roll by 1/8" Cove (with Toe) - CB20-4-R.
  - NOTE 1: THE FLOORING UNDER THE OPEN STAIRWAY IN THE MAIN FLOOR HALLWAY IS TO BE INCLUDED IN THE WORK.  
NOTE 2: THE CARPET TILE LOCATED INSIDE THE STAIRWELL #1, TO BE REMOVED AND DISPOSED OF. SEE 2/A102 AND 2/A103. MAKE GOOD, PAINT AND FINISH THE CONCRETE FLOOR.
  - TRANSITION STRIP
    - SUPPLY AND INSTALL TRANSITION RAMP WHERE TWO FLOOR WITH DIFFERENT HEIGHT MEET: SCHLUTER RENO RAMP (OR SIMILAR TO SUIT FLOORING THICKNESS). RENO RAMP MIN 2-1/4" (64MM). AT DOORWAYS, ENSURE TRANSITION IS CUT TO PROPERLY FIT DOOR OPENING. START AT DOOR JAMB EDGE TO AVOID PROJECTING TO FAR INTO THE CORRIDOR. CUT STRIP AROUND JAMB AS REQUIRED TO FIT THE FULL-WIDTH OPENING. FEATHER TILE TO THE THRESHOLD TO HAVE A CONTINUOUS, SMOOTH, AND LEVEL FLOOR.
    - SUPPLY AND INSTALL PROPER SCHLUTER TRANSITION STRIP WHERE NEW TILE MEETS EXISTING TILES WITH THE SAME HEIGHT. TRANSITION TO BE SMOOTH AND FLUSH SURFACE, AND BE ADA COMPLIANT.
  - CLEANOUT COVERS
    - REPLACE THE EXISTING CIRCLE CLEANOUT COVERS IN THE CORRIDORS WITH SQUARE COVERS: CO-300-S WATTS
- PAINTING**
  - WALLS:
    - EXISTING WALLS IN HALLWAYS TO RECEIVE NEW PAINTING. ONLY THE HALLWAY SIDE PAINTING IS TO BE REFRESHED.
    - PATCH AS REQUIRED AND APPLY PROPER TREATMENT TO PREPARE THE WALL FOR NEW PAINT.
    - ON CONCRETE BLOCK WALLS APPLY THE FOLLOWING TREATMENT: 1 COAT LATEX OR ACRYLIC BLOCK FILLER. 2 COATS LATEX PAINT - SEMI-GLOSS. 1 COAT CLEAR GLAZE.
    - PRIMER AND 2 COATS OF PAINT REQUIRED WHERE WALLS ARE PATCHED.
    - DO NOT PAINT ANY NETWORK CONNECTIONS.
    - THE CONTRACTOR IS TO FIND THE PAINT SIMILAR TO THE PROPOSED PANTONE CODES. PROVIDE SAMPLES AND GET THE COLLEGE'S APPROVAL.
  - DOORS:
    - ALL DOORS IN THE HALLWAY TO RECEIVE NEW PAINTING. PAINT ONLY THE SIDE FACING THE HALLWAY UNLESS NOTED. SEE 4/A101.
    - FOR PAINT CODE, REFER TO TABLE 2 AND TABLE 3 ON PAGE A101, TABLE 4 ON A102 AND TABLE 5 ON A103.
  - WINDOW SILLS & FRAMES:
    - WHERE NOTED ON THE FLOOR PLANS, WINDOW FRAMES AND SILLS TO BE PAINTED. PAINT ONLY THE HALLWAY SIDE OF THE FRAMES.

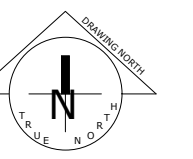


2 WC RESIDENCE BUILDING - LEVEL 1 - PROPOSED  
A101 SC 1:150

The Contractor/Consultant shall check and verify all dimensions and report all errors and omissions to the College's Designee (as applicable) for his/her written direction before proceeding with the Work.

A Detail No  
B Sheet No where detailed

Orientation



Consultant

Seal

#1	ISSUED FOR TENDER	3/21/2024
No	Revisions	Date

Project  
**HALLWAY REFRESH  
NIAGARA COLLEGE  
RESIDENCE BUILDING**

Location  
110 NIAGARA COLLEGE BLVD,  
WELLAND, ON

Campus  
Welland

Building  
Residence  
Floor No  
1, 2 & 3

Project No  
P01078

Requestor  
NIAGARA COLLEGE

Drawing Title  
**SECOND FLOOR PLAN**

Date Created 03/21/2024

Scale As Shown Project Start Date

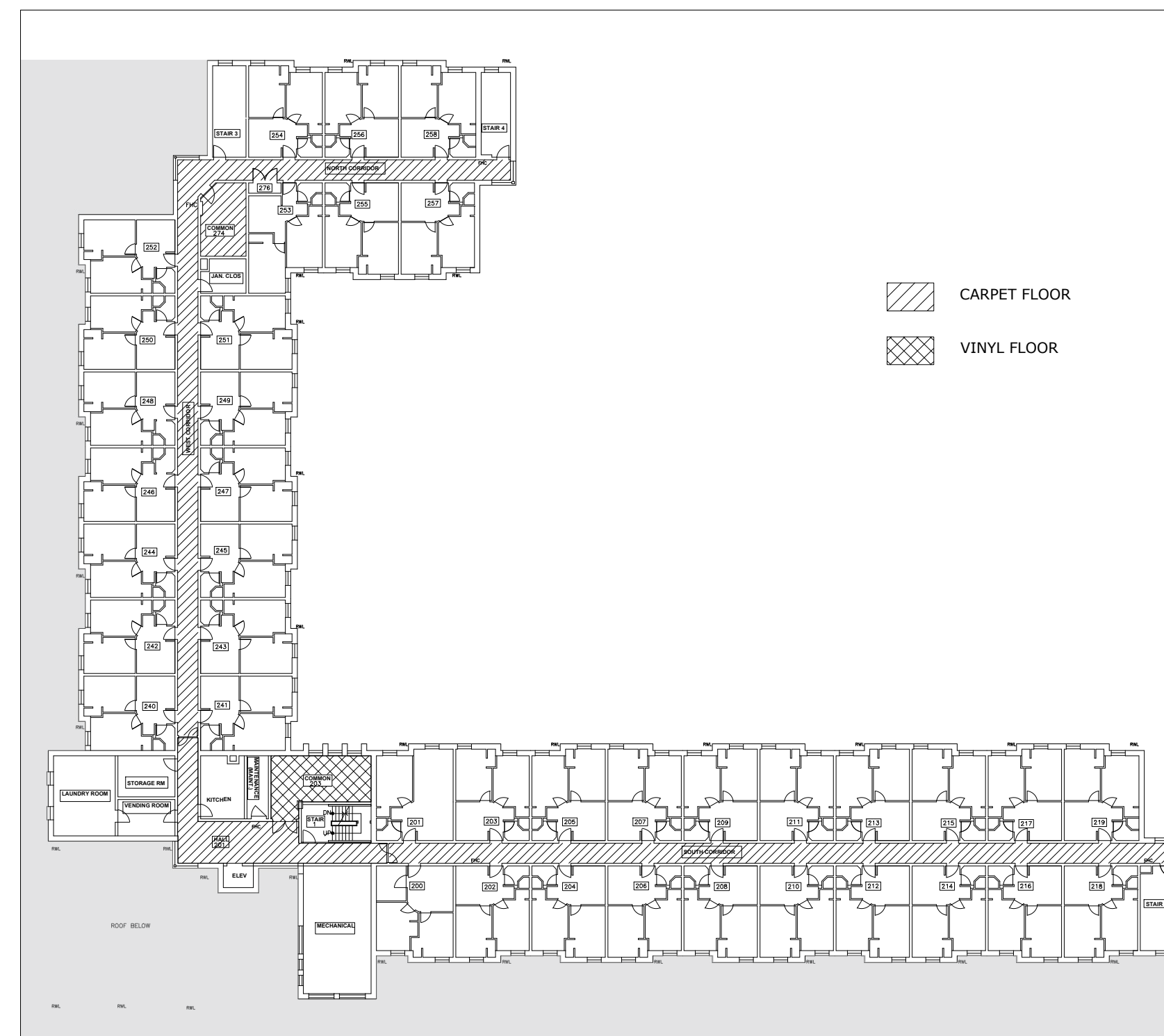
Drawn by NN Substantial Performance Date 06/14/2024

Designed by Sheet No

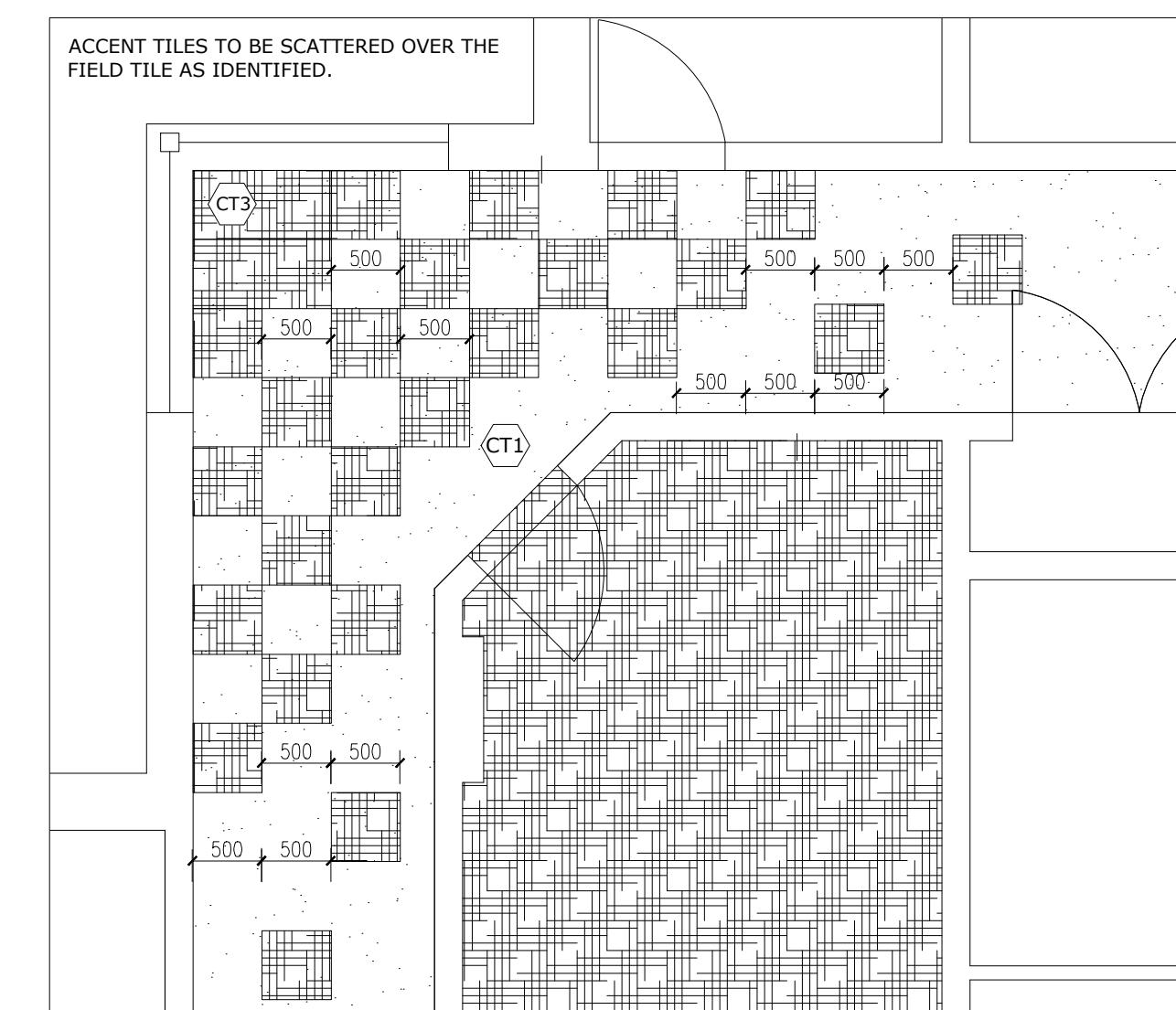
Approved by **A102**

REFER TO DEMOLITION AND CONSTRUCTION NOTES ON PAGE A101.  
SEE TABLES 1 AND 2 ON PAGE A101 FOR FLOOR AND PAINT SCHEDULE.

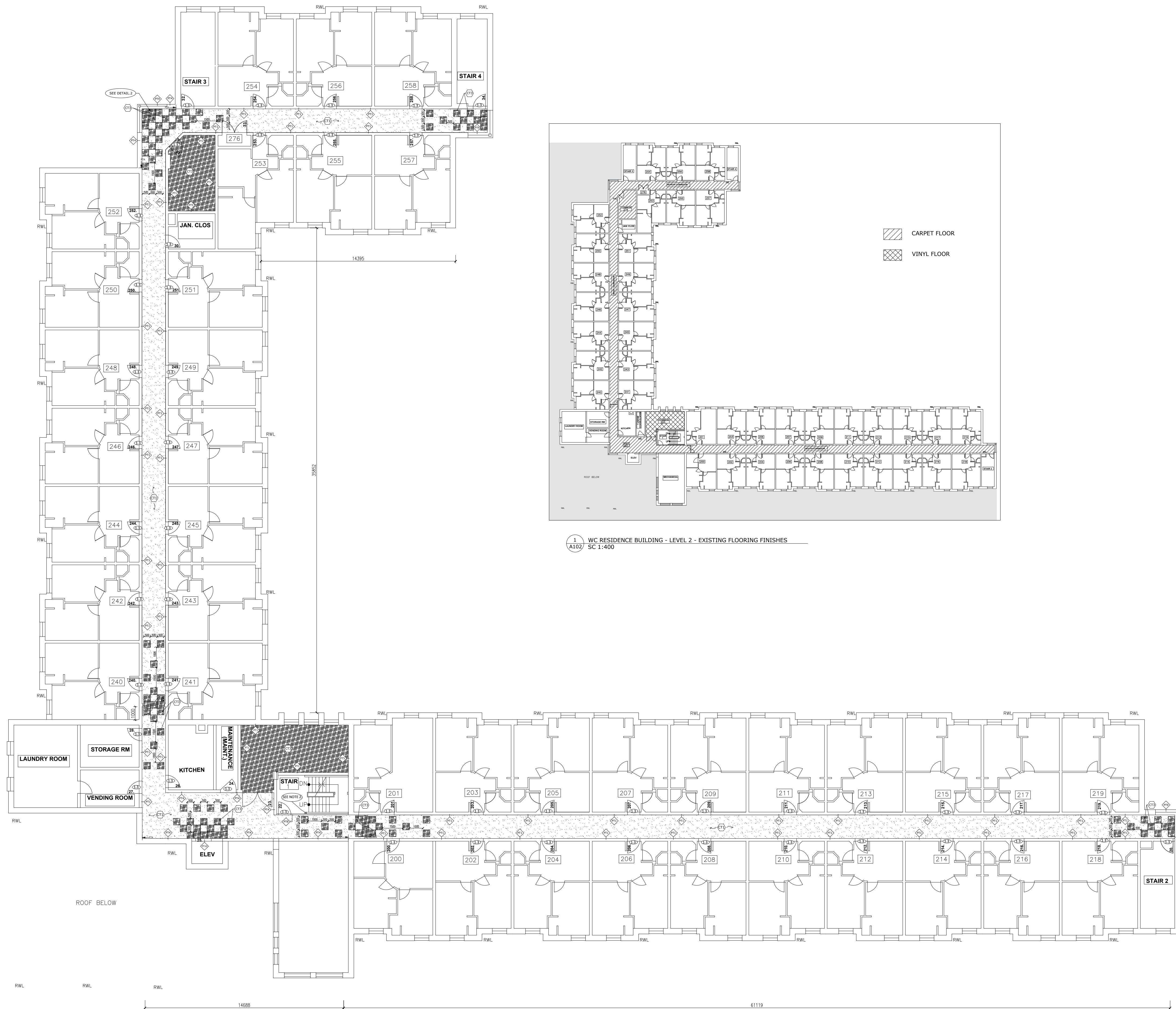
DOOR NO.	ROOM	FINISH		REMARKS
		DOOR	FRAME	
#200	SUITE			
#201	SUITE			
#202	SUITE			
#203	SUITE			
#204	SUITE			
#205	SUITE			
#206	SUITE			
#207	SUITE			
#208	SUITE			
#209	SUITE			
#210	SUITE			
#211	SUITE			
#212	SUITE	PT 8	PT 8	PAINT ONLY CORRIDOR SIDE.
#213	SUITE			
#214	SUITE			
#215	SUITE			
#216	SUITE			
#217	SUITE			
#218	SUITE			
#219	SUITE			
#240	SUITE			
#241	SUITE			
#242	SUITE			
#243	SUITE			
#244	SUITE			
#245	SUITE			
#246	SUITE			
#247	SUITE			
#248	SUITE			
#249	SUITE			
#250	SUITE			
#251	SUITE			
#252	SUITE			
#253	SUITE			
#254	SUITE			
#255	SUITE			
#256	SUITE			
#257	SUITE			
#258	SUITE			
#20	STAIR 2	PT 8	PT 8	PAINT ONLY CORRIDOR SIDE. INSTALL A STAINLESS STEEL KICK PLATE. KICK PLATE TO BE HALF-HEIGHT OF THE DOOR.
#21	SOUTH CORRIDOR	PT 8	PT 8	PAINT BOTH SIDES. INSTALL A STAINLESS STEEL KICK PLATE. KICK PLATE TO BE HALF-HEIGHT OF THE DOOR.
#22	STAIR 1	PT 8	PT 8	PAINT ONLY CORRIDOR SIDE. INSTALL A STAINLESS STEEL KICK PLATE. KICK PLATE TO BE HALF-HEIGHT OF THE DOOR.
#23	COMMON RM - 203	PT 8	PT 8	PAINT BOTH SIDES.
#24	MAINTENANCE	PT 8	PT 8	PAINT ONLY CORRIDOR SIDE. INSTALL A STAINLESS STEEL KICK PLATE. KICK PLATE TO BE HALF-HEIGHT OF THE DOOR.
#25	ELEVATOR DOOR	PT 10	PT 10	PAINT ONLY CORRIDOR SIDE.
#26	KITCHEN	PT 8	PT 8	PAINT ONLY CORRIDOR SIDE. INSTALL A STAINLESS STEEL KICK PLATE. KICK PLATE TO BE HALF-HEIGHT OF THE DOOR.
#27	VENDING RM	PT 8	PT 8	PAINT ONLY CORRIDOR SIDE. INSTALL A STAINLESS STEEL KICK PLATE. KICK PLATE TO BE HALF-HEIGHT OF THE DOOR.
#28	STORAGE RM	PT 8	PT 8	PAINT ONLY CORRIDOR SIDE. INSTALL A STAINLESS STEEL KICK PLATE. KICK PLATE TO BE HALF-HEIGHT OF THE DOOR.
#29	WEST CORRIDOR	PT 8	PT 8	PAINT BOTH SIDES. INSTALL A STAINLESS STEEL KICK PLATE. KICK PLATE TO BE HALF-HEIGHT OF THE DOOR.
#30	JAN CLOSET	PT 8	PT 8	PAINT ONLY CORRIDOR SIDE. INSTALL A STAINLESS STEEL KICK PLATE. KICK PLATE TO BE HALF-HEIGHT OF THE DOOR.
#31	COMMON RM- 274	PT 8	PT 8	PAINT BOTH SIDES. INSTALL A STAINLESS STEEL KICK PLATE. KICK PLATE TO BE HALF-HEIGHT OF THE DOOR.
#32	STAIR 3	PT 8	PT 8	PAINT ONLY CORRIDOR SIDE. INSTALL A STAINLESS STEEL KICK PLATE. KICK PLATE TO BE HALF-HEIGHT OF THE DOOR.
#33	ROOM 276	PT 8	PT 8	PAINT ONLY CORRIDOR SIDE.
#34	STAIR 4	PT 8	PT 8	PAINT ONLY CORRIDOR SIDE. INSTALL A STAINLESS STEEL KICK PLATE. KICK PLATE TO BE HALF-HEIGHT OF THE DOOR.



1 WC RESIDENCE BUILDING - LEVEL 2 - EXISTING FLOORING FINISHES  
SC 1:400



3 ACCENT TILES CONFIGURATION - DETAIL.2  
SC 1:50

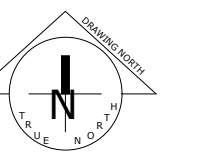


2 WC RESIDENCE BUILDING - LEVEL 2 - PROPOSED  
SC 1:150

The Contractor/Consultant shall check and verify all dimensions and report all errors and omissions to the College's Designee (as applicable) for his/her written direction before proceeding with the Work.

A Detail No  
B Sheet No where detailed

Orientation



Consultant

Seal

#1	ISSUED FOR TENDER	3/21/2024
No	Revisions	Date

Project  
**HALLWAY REFRESH  
NIAGARA COLLEGE  
RESIDENCE BUILDING**

Location  
110 NIAGARA COLLEGE BLVD,  
WELLAND, ON

Campus  
Welland

Building  
Residence

Floor No  
1, 2 & 3

Project No  
P01078

Requestor  
NIAGARA COLLEGE

Drawing Title  
**THIRD FLOOR PLAN**

Date Created  
03/21/2024

Scale  
As Shown

Project Start Date

Drawn by  
NN

Substantial Performance Date  
06/14/2024

Designed by

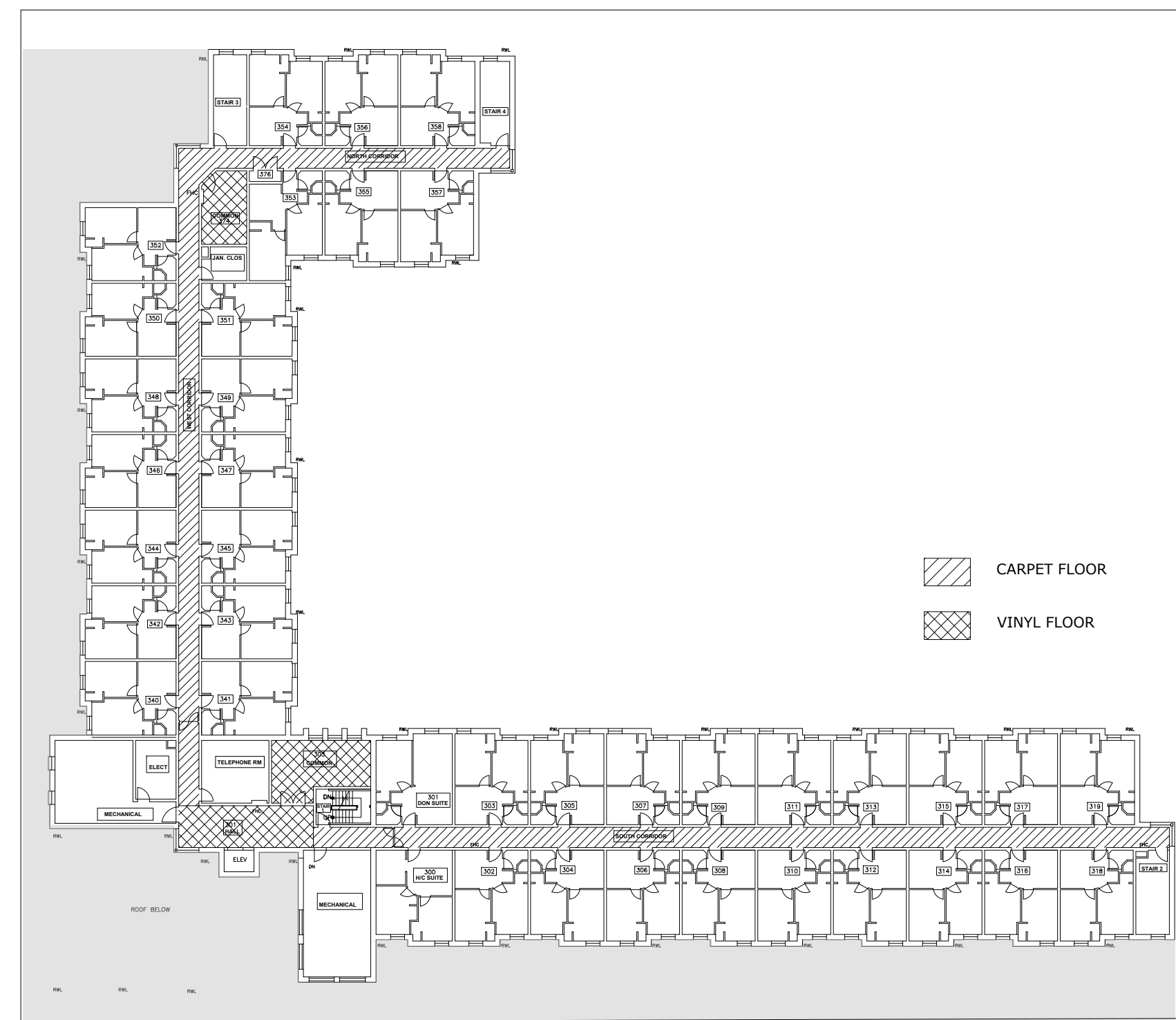
Sheet No

Approved by

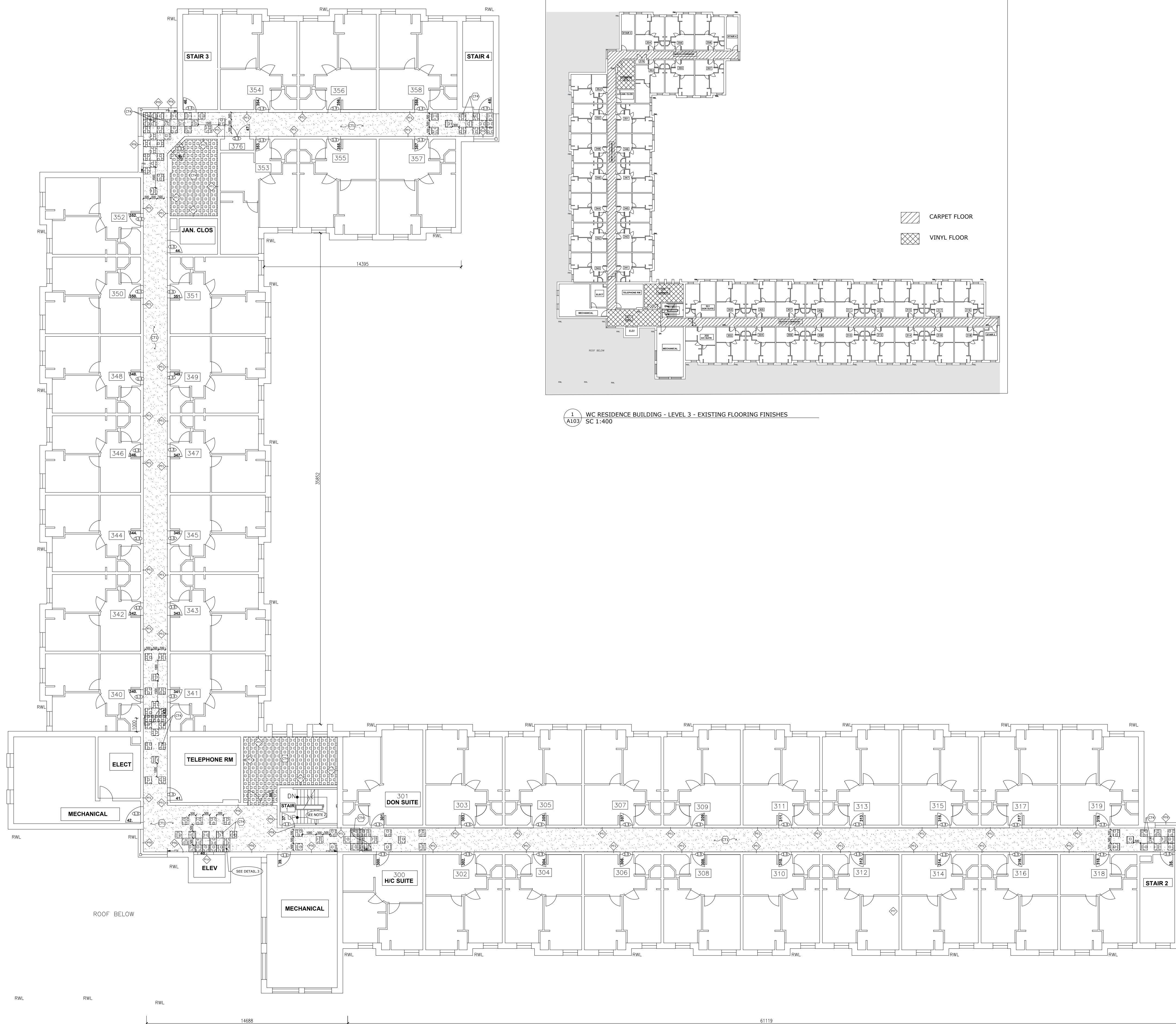
**A103**

REFER TO DEMOLITION AND CONSTRUCTION NOTES ON PAGE A101.  
SEE TABLE 1 AND 2 ON PAGE A101 FOR FLOOR AND PAINT SCHEDULE.

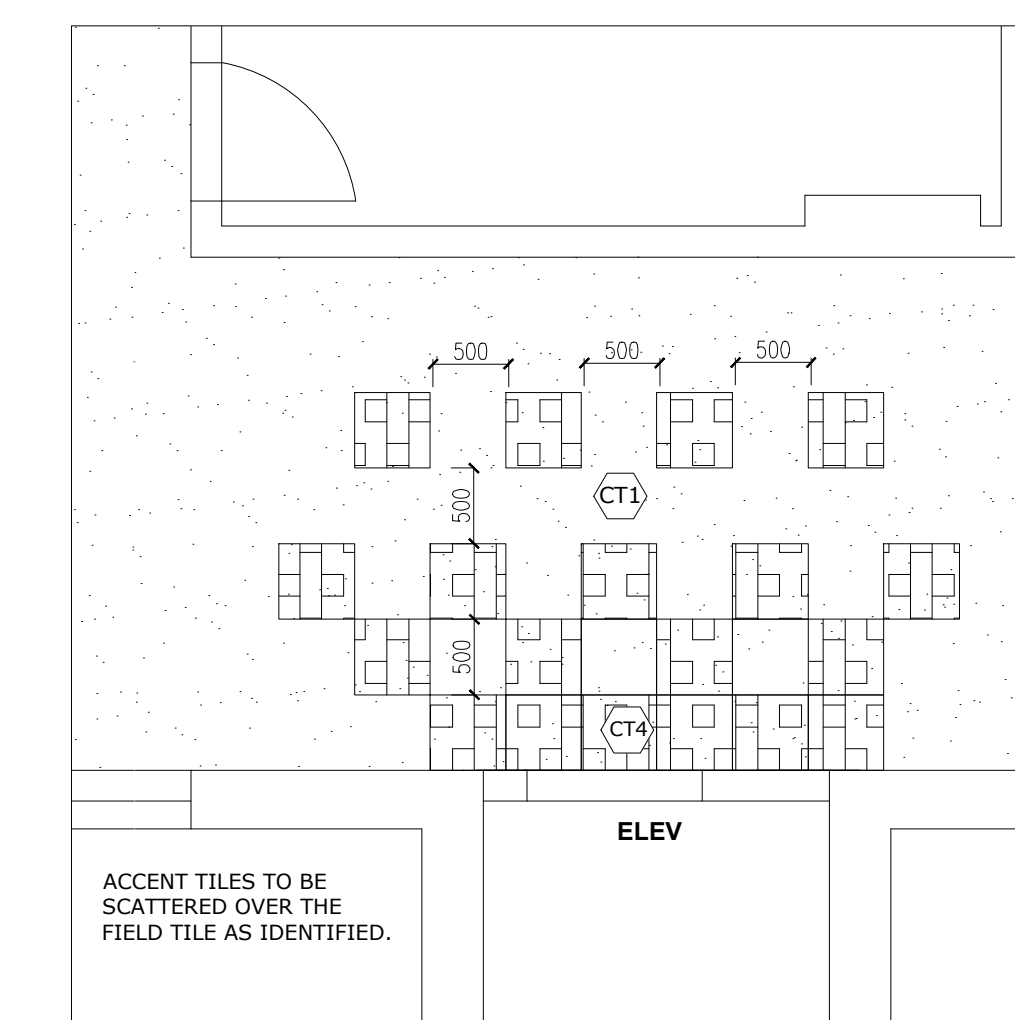
DOOR NO.	ROOM	FINISH		REMARKS
		DOOR	FRAME	
#300	SUITE			
#301	SUITE			
#302	SUITE			
#303	SUITE			
#304	SUITE			
#305	SUITE			
#306	SUITE			
#307	SUITE			
#308	SUITE			
#309	SUITE			
#310	SUITE			
#311	SUITE			
#312	SUITE	PT 8	PT 8	PAINT ONLY CORRIDOR SIDE.
#313	SUITE			
#314	SUITE			
#315	SUITE			
#316	SUITE			
#317	SUITE			
#318	SUITE			
#319	SUITE			
#340	SUITE			
#341	SUITE			
#342	SUITE			
#343	SUITE			
#344	SUITE			
#345	SUITE			
#346	SUITE			
#347	SUITE			
#348	SUITE			
#349	SUITE			
#350	SUITE			
#351	SUITE			
#352	SUITE			
#353	SUITE			
#354	SUITE			
#355	SUITE			
#356	SUITE			
#357	SUITE			
#358	SUITE			
#35	STAIR 2	PT 8	PT 8	PAINT ONLY CORRIDOR SIDE. INSTALL A STAINLESS STEEL KICK PLATE. KICK PLATE TO BE HALF-HEIGHT OF THE DOOR.
#36	SOUTH CORRIDOR	PT 8	PT 8	PAINT BOTH SIDES. INSTALL A STAINLESS STEEL KICK PLATE. KICK PLATE TO BE HALF-HEIGHT OF THE DOOR.
#37	STAIR 1	PT 8	PT 8	PAINT ONLY CORRIDOR SIDE. INSTALL A STAINLESS STEEL KICK PLATE. KICK PLATE TO BE HALF-HEIGHT OF THE DOOR.
#38	COMMON RM - 303	PT 8	PT 8	PAINT BOTH SIDES.
#39	MECHANICAL	PT 8	PT 8	PAINT ONLY CORRIDOR SIDE. INSTALL A STAINLESS STEEL KICK PLATE. KICK PLATE TO BE HALF-HEIGHT OF THE DOOR.
#40	ELEVATOR	PT 10	PT 10	PAINT ONLY CORRIDOR SIDE.
#41	TELEPHONE RM	PT 8	PT 8	PAINT ONLY CORRIDOR SIDE. INSTALL A STAINLESS STEEL KICK PLATE. KICK PLATE TO BE HALF-HEIGHT OF THE DOOR.
#42	MECHANICAL	PT 8	PT 8	PAINT ONLY CORRIDOR SIDE. INSTALL A STAINLESS STEEL KICK PLATE. KICK PLATE TO BE HALF-HEIGHT OF THE DOOR.
#43	WEST CORRIDOR	PT 8	PT 8	PAINT BOTH SIDES. INSTALL A STAINLESS STEEL KICK PLATE. KICK PLATE TO BE HALF-HEIGHT OF THE DOOR.
#44	JAN CLOSET	PT 8	PT 8	PAINT ONLY CORRIDOR SIDE. INSTALL A STAINLESS STEEL KICK PLATE. KICK PLATE TO BE HALF-HEIGHT OF THE DOOR.
#45	COMMON RM - 374	PT 8	PT 8	PAINT BOTH SIDES. INSTALL A STAINLESS STEEL KICK PLATE. KICK PLATE TO BE HALF-HEIGHT OF THE DOOR.
#46	STAIR 3	PT 8	PT 8	PAINT ONLY CORRIDOR SIDE. INSTALL A STAINLESS STEEL KICK PLATE. KICK PLATE TO BE HALF-HEIGHT OF THE DOOR.
#47	ROOM 376	PT 8	PT 8	PAINT ONLY CORRIDOR SIDE.
#48	STAIR 4	PT 8	PT 8	PAINT ONLY CORRIDOR SIDE. INSTALL A STAINLESS STEEL KICK PLATE. KICK PLATE TO BE HALF-HEIGHT OF THE DOOR.



1 WC RESIDENCE BUILDING - LEVEL 3 - EXISTING FLOORING FINISHES  
A103 SC 1:400



2 WC RESIDENCE BUILDING - LEVEL 3 - PROPOSED  
A103 SC 1:150

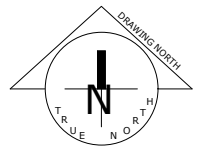


3 ACCENT TILES CONFIGURATION - DETAIL.3  
A103 SC 1:50

The Contractor/Consultant shall check and verify all dimensions and report all errors and omissions to the College's Designee (as applicable) for his/her written direction before proceeding with the Work.

A Detail No  
B Sheet No where detailed

Orientation



Consultant

Seal

#1	ISSUED FOR TENDER	3/21/2024
No	Revisions	Date

Project  
**HALLWAY REFRESH  
NIAGARA COLLEGE  
RESIDENCE BUILDING**

Location  
110 NIAGARA COLLEGE BLVD,  
WELLAND, ON

Campus  
Welland

Building  
Residence  
Floor No  
1, 2 & 3

Project No  
P01078

Requestor  
NIAGARA COLLEGE

Drawing Title

**THIRD FLOOR PLAN  
REFLECTED CEILING PLAN**

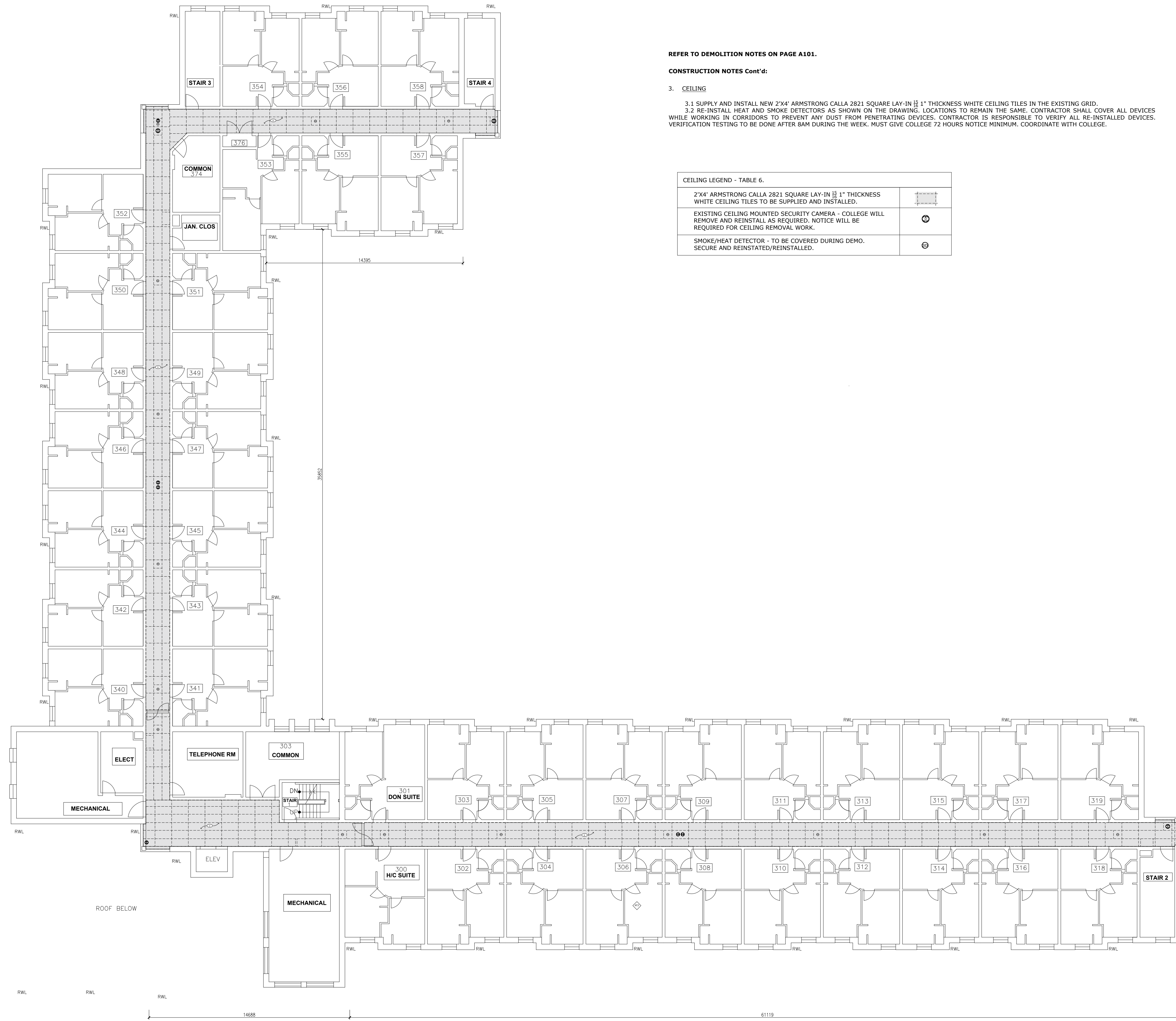
Date Created 03/21/2024

Scale As Shown Project Start Date

Drawn by NN Substantial Performance Date 06/14/2024

Designed by Sheet No

Approved by **A104**



REFER TO DEMOLITION NOTES ON PAGE A101.

**CONSTRUCTION NOTES Cont'd:**

**3. CEILING**

- 3.1 SUPPLY AND INSTALL NEW 2'X4' ARMSTRONG CALLA 2821 SQUARE LAY-IN 1/8" THICKNESS WHITE CEILING TILES IN THE EXISTING GRID.
- 3.2 RE-INSTALL HEAT AND SMOKE DETECTORS AS SHOWN ON THE DRAWING. LOCATIONS TO REMAIN THE SAME. CONTRACTOR SHALL COVER ALL DEVICES WHILE WORKING IN CORRIDORS TO PREVENT ANY DUST FROM PENETRATING DEVICES. CONTRACTOR IS RESPONSIBLE TO VERIFY ALL RE-INSTALLED DEVICES. VERIFICATION TESTING TO BE DONE AFTER 8AM DURING THE WEEK. MUST GIVE COLLEGE 72 HOURS NOTICE MINIMUM. COORDINATE WITH COLLEGE.

CEILING LEGEND - TABLE 6.	
2'X4' ARMSTRONG CALLA 2821 SQUARE LAY-IN 1/8" THICKNESS WHITE CEILING TILES TO BE SUPPLIED AND INSTALLED.	
EXISTING CEILING MOUNTED SECURITY CAMERA - COLLEGE WILL REMOVE AND REINSTALL AS REQUIRED. NOTICE WILL BE REQUIRED FOR CEILING REMOVAL WORK.	
SMOKE/HEAT DETECTOR - TO BE COVERED DURING DEMO. SECURE AND REINSTATED/REINSTALLED.	