



THE CORPORATION OF THE CITY OF MARKHAM

**101 Town Centre Boulevard
Markham, Ontario L3R 9W3**

March 21st, 2024

Addendum #2

Bid Opportunity: 068-T-24 Milliken Mills Community Centre - Ceiling Tile Replacement

Closing Date: Friday, April 12th, 2024 3:00 PM

1. GENERAL

The additions, deletions and/or revisions as hereinafter specified, shall become part of the Bid document and will be considered to have been included in the bid document.

2. CHANGE TO RFT

Add – ceiling plan and details.

3. QUESTIONS AND ANSWERS

Question 1:

The tender documents do not include ceiling tiles specifications. Please provide specifications through an addendum.

Answer 1:

ACOUSTIC CEILING PANEL SPECIFICATIONS

- 1.** Provide manufacturer's standard panels of configuration indicated that comply with ASTM E1264 classifications as designated by the nominal values for types, patterns, acoustic ratings, and light reflectance class, unless otherwise indicated;
- 2.** Surface burning properties, all types:

Flame spread of 25 or less and smoke developed of 50 or less when tested in accordance with CAN/ULC S102, substantiated by ULC labels on materials supplied.

Acoustic Panel (ACT2):

ASTM E1264, Type XII, Form II, Pattern G, washable and scrubable surface; Model 'OPTIMA Open Plan series' manufactured by Armstrong, 'Ecophone Gedina series' by CertianTeed Ceilings or 'Halcyon ClimaPlus series' manufactured by CGC, and conforming to the following:

1. Recycled Content: > 30 %;
2. NRC: Min. 0.90;
3. CAC: Min. 20;
4. LR: minimum 0.85;
5. Sizes: 610 x 1220 mm; standard sizes;
6. Thickness: 19 mm;
7. Edge Profile: Square Tegular;
8. Surface Texture: Fine;
9. Surface Colour: White.

INSTALLATION - ACOUSTIC UNITS

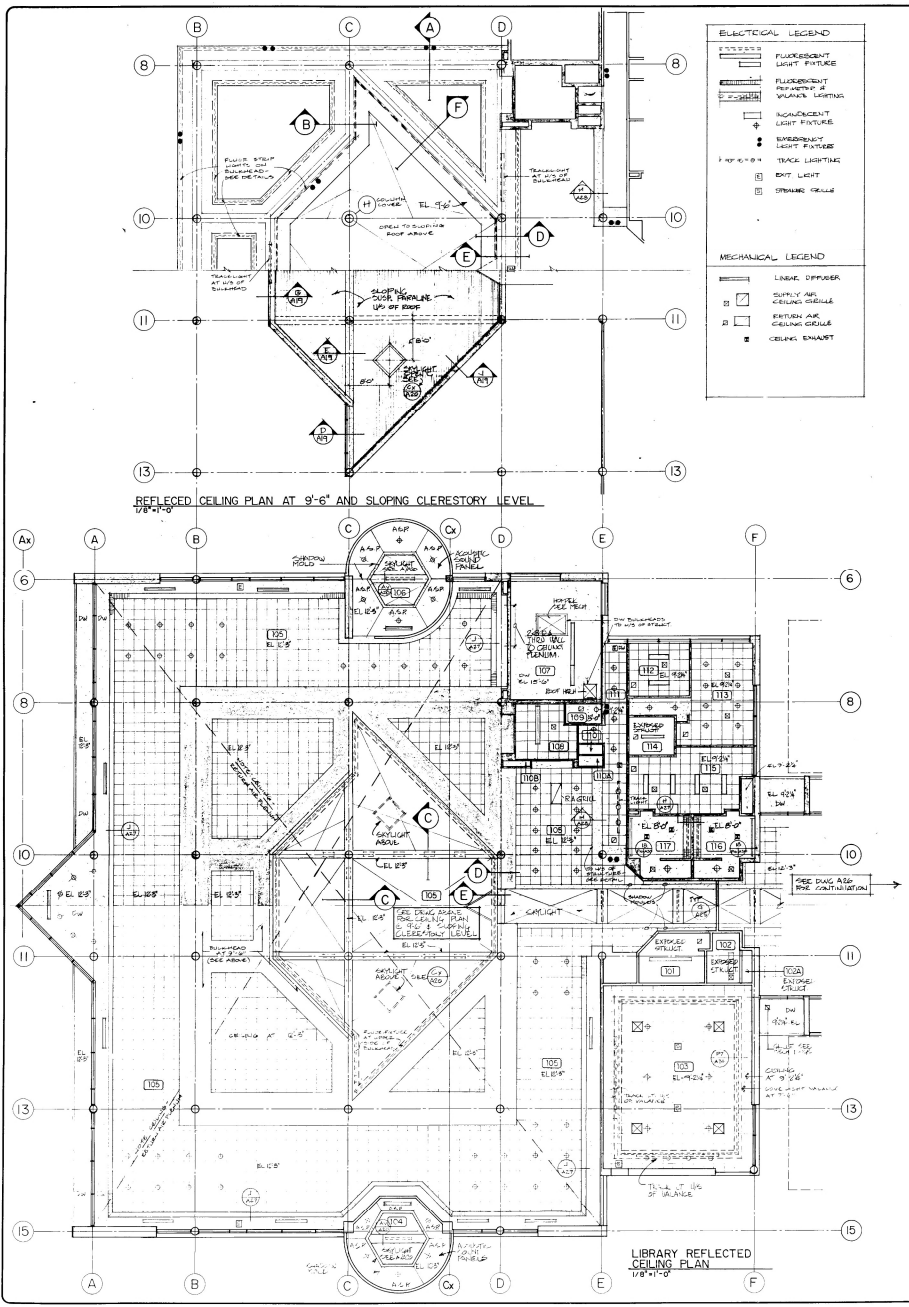
1. Install acoustic units to manufacturer's instructions;
2. Fit acoustic units in place, free from damaged edges or other defects detrimental to appearance and function;
3. Install units after above ceiling work is complete;
4. Install acoustic units' level, in uniform plane, and free from twist, warp, and dents;
5. Cutting Acoustic Units:
 - Cut to fit irregular grid and perimeter edge trim.
6. Where round obstructions occur, provide preformed closures to match perimeter moulding;
7. Where indicated, lay acoustic insulation for a distance of 1 200 mm either side of acoustic partitions.

MANUFACTURERS

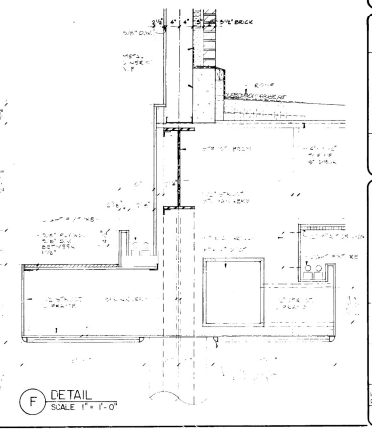
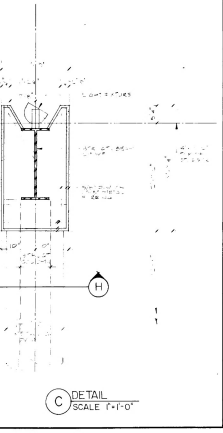
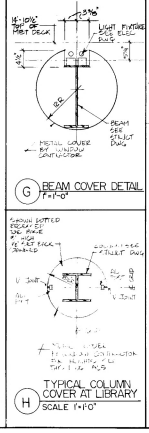
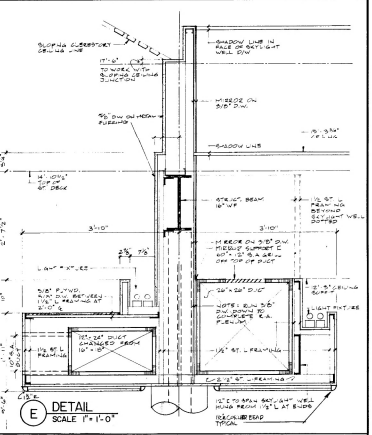
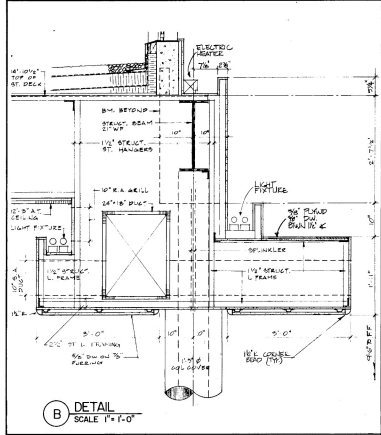
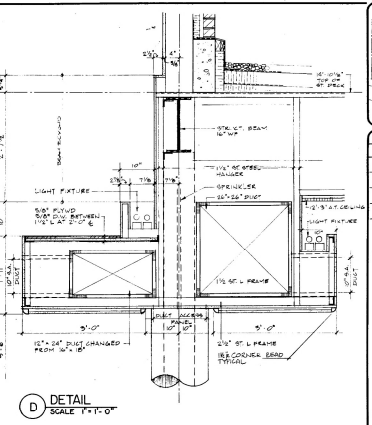
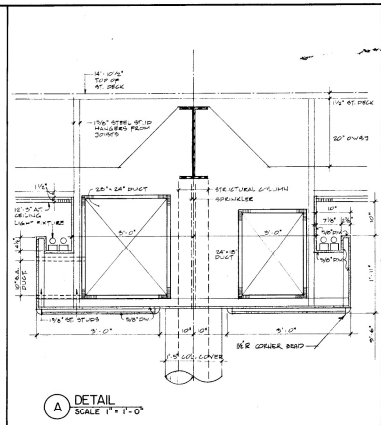
Subject to conformance to requirements provide gypsum board assembly products manufactured by Armstrong World Industries Canada Limited, www.armstrong.com, CertainTeed Gypsum Canada Inc. a Division of Saint-Gobain www.certainteed.com or CGC Inc. a USG Company www.cgcinc.com

END OF ADDENDUM #2

If you require any additional information, please contact the purchasing representative.



- ELECTRICAL LEGEND**
- FLOURESCENT LIGHT FIXTURE
 - FLOURESCENT RECESSED IN PLANE LIGHTING
 - NONRECESSED LIGHT FIXTURE
 - EMBEDDED LIGHT FIXTURE
 - TRACE LIGHTING
 - EXIT LIGHT
 - SWIMMING POOL
- MECHANICAL LEGEND**
- LINEAR DIFFUSER
 - SUPPLY AIR CEILING GRILLE
 - RETURN AIR CEILING GRILLE
 - CEILING EXHAUST



KEY PLAN

REVISIONS & NOTES

NO.	DATE	BY	CHKD.
1	1988	MMH	MMH
2	1988	MMH	MMH

ISSUED FOR PERMIT 1988

ISSUED FOR TENDER 1988

ARCHITECT ASSOCIATION

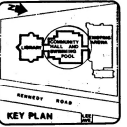
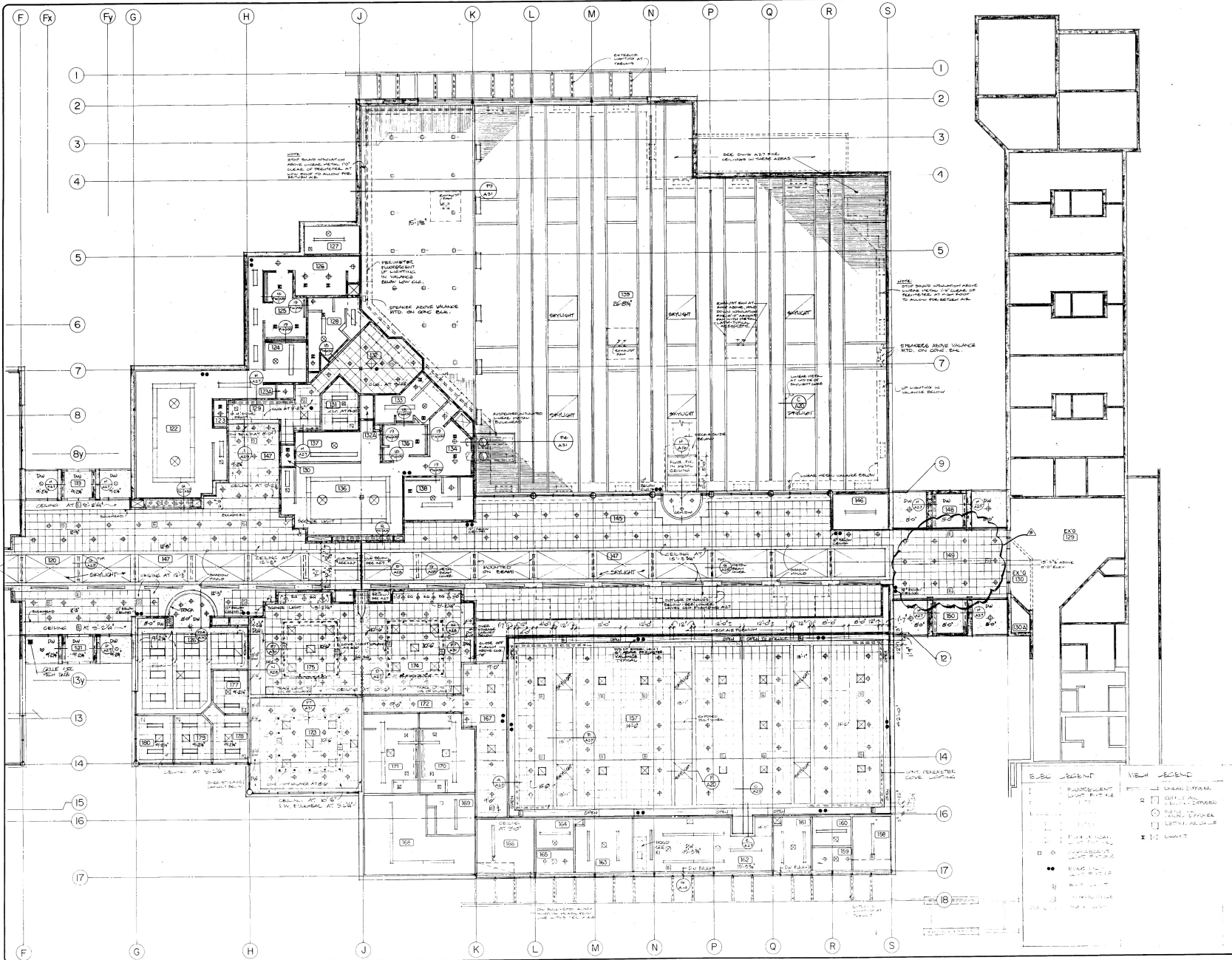
MATHERS & HALDENBY

milliken mills community centre
kennedy road markham

LIBRARY REFLECTED CEILING PLANS AND DETAILS

AS SHOWN

8646-A25



REVISIONS	
NO.	DESCRIPTION
1	ISSUED FOR PERMIT
2	ISSUED FOR TENDER
3	ISSUED FOR CONSTRUCTION

MATERIALS & NOTES		
DESCRIPTION	QTY	UNIT
1	100	sq
2	100	sq
3	100	sq
4	100	sq
5	100	sq
6	100	sq
7	100	sq
8	100	sq
9	100	sq
10	100	sq
11	100	sq
12	100	sq
13	100	sq
14	100	sq
15	100	sq
16	100	sq
17	100	sq
18	100	sq



- LEGEND**
- GENERAL OFFICE
 - COMMERCIAL OFFICE
 - MEETING ROOM
 - STORAGE
 - RESTROOM
 - SERVICE AREA
 - LOBBY
 - STAIR
 - ELEVATOR
 - ENTRANCE
 - WINDOW
 - DOOR
 - FURNITURE
 - LIGHTING
 - PLANT
 - EQUIPMENT
 - SIGNAGE
 - OTHER

milliken mills community centre
 kennedy road
 markham

REFLECTED CEILING PLAN
 POOL AREA

SCALE: 1/8" = 1'-0"

DATE: APR 4-88
 DRAWING NO: 8646-A26

