



Addendum #1

Issued April 24, 2024

The following information changes the RFT documents issued on April 17, 2024.

GENERAL INFORMATION

Item 1: See 'Addendum #01' dated April 24, 2024 issued by the Consultant (5 pages)

End of Addendum #1



ADDENDUM #01

RE: REQUEST FOR TENDER #2024-137-P01947
Hess Street Elementary School – Renovation Project

April 24, 2024

Please review the following addendum. This document shall be considered a component of TENDER #2024-137-P01947. All other terms and conditions remain the same.

Clarification/Change:

- 1) **Question:** On drawing M1.01, demo and new gym layout there is a reference to note 5. There isn't a note 5 under the new drawing notes.

Answer: Added note for new transfer grille. Refer to attached Addendum No. 1 by CK Engineering Inc dated April 24, 2024.

- 2) **Question:** On drawing M1.02, second floor girls w/r new duct layout, there is reference to a note 4. There isn't a note 4 under the new drawing notes.

Answer: Revised note for new exhaust grille. Refer to attached Addendum No. 1 by CK Engineering Inc dated April 24, 2024.

- 3) **Question:** The schedule shows H-1 and H-2. Where is H-2 located?

Answer: H-2 has been deleted since not required. Refer to attached Addendum No. 1 by CK Engineering Inc dated April 24, 2024.

- 4) **Question:** In various places on the drawings there are cross hatched symbols along the walls with no notes or references to what these are. What are these?

Answer: Existing heaters to remain. Refer to attached Addendum No. 1 by CK Engineering Inc dated April 24, 2024.

- 5) **Question:** Who is the BAS contractor?

Answer: Siemens is the BAS contractor.

--END--



Addendum No. 1

PROJECT:	HWDSB Hess Elementary School	DATE:	April 24 th , 2024
PROJECT #:	23035	FROM:	Binayak Raj Maurya
TO:	NGA Architects	ATTENTION:	Ivana Paukovic

Reason for Change: – As per the Client’s Requests

1. Mechanical

1.1 Refer to Mechanical Drawing M 0.03 Rev. C

- Tag “H – 2” has been removed in the Hydronic Wall Fin Heaters Schedule.

1.2 Refer to Mechanical Drawing M 1.01 Rev. C

- New note number-5 stated as “PROVIDE NEW TRANSER AIR GRILLES AS INDICATED” was added in the new drawing notes table.
- “EX. HEATER TO REMAIN” tag has been shown at the locations of existing wall fin heaters in Gymnasium-105.

1.3 Refer to Mechanical Drawing M 1.02 Rev. C

- “EX. HEATER TO REMAIN” tag has been shown at the locations of existing wall fin heaters in second floor Girls’ WR and Boys’ WR.
- Note numbers have been updated in the second floor Girls’ WR New HVAC Layout.

END OF Addendum No. 1.

MECHANICAL LEGEND		MECHANICAL LEGEND	
SITE PLAN 		HVAC 	
PIPING/PLUMBING 		ANNOTATION LEGEND 	

MECHANICAL DRAWING LIST	
M0.01	MECHANICAL SPECIFICATIONS I
M0.02	MECHANICAL SPECIFICATIONS II
M0.03	MECHANICAL LEGEND AND SCHEDULE
M0.04	MECHANICAL DETAILS
P1.01	PARTIAL GROUND FLOOR PLUMBING DEMOLITION AND NEW LAYOUT
P1.02	PARTIAL SECOND FLOOR PLUMBING DEMOLITION AND NEW LAYOUT
M1.01	PARTIAL GROUND FLOOR H.V.A.C. DEMOLITION AND NEW LAYOUT
M1.02	PARTIAL SECOND FLOOR H.V.A.C. DEMOLITION AND NEW LAYOUT

DIFFUSE & GRILLE SCHEDULE									
TAG	MANUFACTURER	MODEL NO.	TYPE	SIZE (IN X IN)	NECK SIZE (IN)	FINISH	MOUNTING	DAMPER	REMARKS
SA1	PRICE	510	SUPPLY	AS NOTED	-	B12	T-BAR/ DRYWALL	YES	NOTE 1, 2
RA1	PRICE	535	EXHAUST	AS NOTED	-	B12	T-BAR/ DRYWALL	YES	NOTE 1, 2
TA1	PRICE	ATG1	TRANSFER	AS NOTED	-	B12	WALL		SIGHTPROOF

NOTES:
 1. ACCEPTABLE EQUIVALENT: KRUEGER, NAILOR, METALAIR.
 2. DOUBLE DEFLECTION

ACCESS TO EQUIPMENTS AND ACCESSORIES

ALL MECHANICAL EQUIPMENTS, PIPING AND ACCESSORIES MUST BE ACCESSIBLE FOR OTHER TRADES. IT IS THE RESPONSIBILITY OF THE MECHANICAL CONTRACTOR TO REVIEW AND PROVIDE ACCESS PANELS. DIVISION 09 SHALL ASSIST MECHANICAL CONTRACTOR TO INSTALL ACCESS PANELS. THE MECHANICAL PLAN DRAWINGS ATTEMPTS TO SHOW AS MUCH AS ACCESS PANELS. HOWEVER, THE QUANTITIES AND SIZE OF ACCESS PANELS SHALL VARY AS REQUIRED FOR INSTALLATION AS PER SITE CONDITION. ALL ACCESS PANELS MUST BE AIR TIGHT. PROVIDE NEOPRENE GASKETS EXCEPT FIRE DAMPERS. CONTRACTOR SHALL ALLOW FOR 4 ADDITIONAL ACCESS PANELS APART FROM THE ONE SHOWN ON THE DRAWINGS.

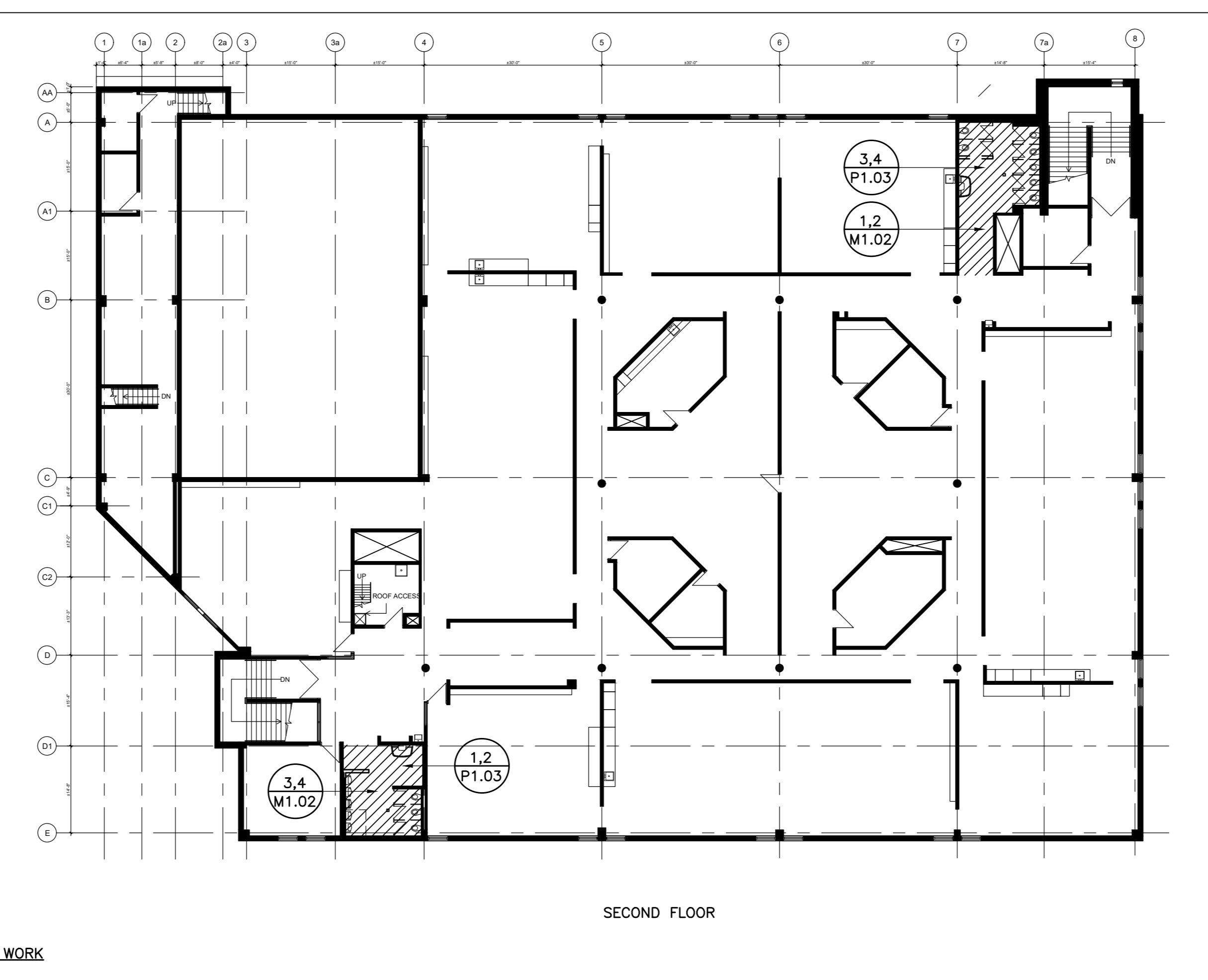
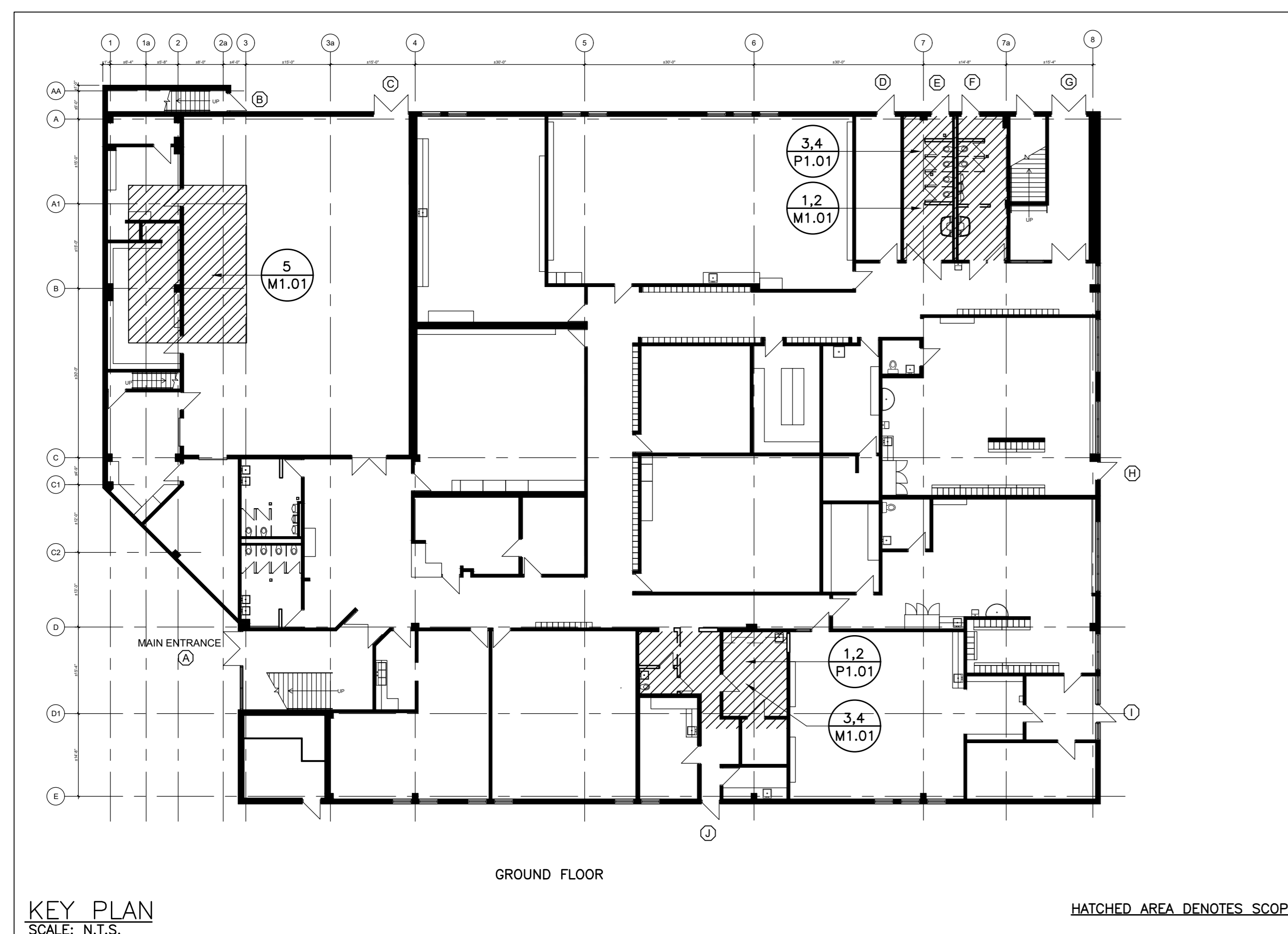
PLUMBING FIXTURE SCHEDULE								
TYPE	SPECIFICATION	ACCESSORIES	POWER	CW	HW	WASTE	VENT	REMARKS
WC-1	WATER CLOSET AMERICAN STANDARD MADERA FLOWISE 15" RIM HEIGHT ELONGATED FLUSHMETER TOILET, TOP SPUD MODEL No. 3451001, FLOOR MOUNTED VITREOUS CHINA, BOLT CAPS WITH RETAINERS, FLUSH LEVER ON OPPOSITE SIDE OF GRAB BAR (CONTRACTOR TO VERIFY).	DELTA MODEL 81T201 EXPOSED FLUSH VALVE WITH MANUAL HANDLE FOR 1-1/2" WATER CLOSET FIXTURE, 1" INLET, VACUUM BREAKER	-	25MM (1")	-	75MM (3")	50MM (2")	TOILET SEAT SHALL BE OPEN ELONGATED FRONT TYPE.
WC-2	WATER CLOSET (BARRIER FREE) AMERICAN STANDARD RIGHT WIDTH FLOWISE 17" RIM HEIGHT ELONGATED FLUSHMETER TOILET, TOP SPUD MODEL No. 3451001, FLOOR MOUNTED VITREOUS CHINA, BOLT CAPS WITH RETAINERS, FLUSH LEVER ON OPPOSITE SIDE OF GRAB BAR (CONTRACTOR TO VERIFY).	DELTA MODEL 81T201 EXPOSED FLUSH VALVE WITH MANUAL HANDLE FOR 1-1/2" WATER CLOSET FIXTURE, 1" INLET, VACUUM BREAKER	-	25MM (1")	-	75MM (3")	50MM (2")	TOILET SEAT SHALL BE OPEN ELONGATED FRONT TYPE.
LAV-1	WALL-HUNG LAVATORY AMERICAN STANDARD LUCERNE MODEL NO. 0355.012, 4" CENTER SET FAUCET HOLES, WALL HANGER.	DELTA METERING CENTRESET TWO HANDLE FAUCET MODEL 86T1093. c/w METERING, SELF CLOSING LEVER, VANDAL RESISTANT	-	13MM (1/2")	13MM (1/2")	38MM (1-1/2")	32MM (1-1/4")	
LAV-2	WALL-HUNG BARRIER-FREE LAVATORY AMERICAN STANDARD LUCERNE MODEL NO. 0355.012, 4" CENTER SET FAUCET HOLES, WALL HANGER.	DELTA CENTRESET TWO HANDLE FAUCET MODEL 21C132. c/w VANDAL RESISTANT HANDLES, RED/BLUE INDICATORS, CER-TECK CARTRIDGES, AERATOR, KNEE CONTACT GUARD	-	13MM (1/2")	13MM (1/2")	38MM (1-1/2")	32MM (1-1/4")	
UR-1	URINAL AMERICAN STANDARD WASHBROOK FLOWISE BARRIER FREE UNIVERSAL TOP SPUD MODEL No. 6590.001 WITH LOW CONSUMPTION 1.0 GPF, FLUSHING RIM, ELONGATED RIM, EXTENDED SIDES, WALL HANGERS, STRAINER	CONNECT TO EXISTING URINAL TANK C/W NEW WATER MATRIX FLUSH CONTROLLER AND DISTRIBUTION PIPING. SEE DETAILS M0.04	-	19MM (3/4")	-	50MM (2")	38MM (1-1/2")	
TP	TRAP PRIMER P.P.P. INC. MODEL PR-500 AUTOMATIC TRAP SEAL PRIMER VALVE, CAST BRASS BODY SERVING INDIVIDUAL OR REMOTE AREA DRAINS WITH 1/2" CONNECTIONS WITH STRAINER AND INTEGRAL BACKFLOW PREVENTER AND VACUUM BREAKER.	EXACT LOCATION NOT SHOWN IN DRAWING. CONTRACTOR SHALL CHOOSE A LOCATION AND INSTALL AT BASEMENT MECHANICAL ROOM.	-	13MM (1/2")	-	-	-	
FD	FLOOR DRAIN ZURN ZN-211-B-P, CAST IRON FLOOR DRAIN WITH 5" ROUND NICKEL BRONZE STRAINER, AND 1/2" TRAP PRIMER CONNECTION OR EQUAL.	-	-	-	-	75MM (3")	38MM (1-1/2")	
CO	CLEANOUT FOR ABOVE GROUND PIPING ZURN MODEL: CO2413 FOR DW PIPING.	-	-	-	-	-	-	
FOO	FLOOR CLEANOUT ZURN ZN-1602 CAST IRON CLEAN OUT WITH 5" NICKEL BRONZE COVER.	-	-	-	-	-	-	

NOTES:
 1. CONTRACTOR IS RESPONSIBILITIES TO VERIFY ALL EQUIPMENTS AND ITEM QUANTITY.
 2. COORDINATE WITH GENERAL CONTRACTOR BEFORE INSTALLATION.
 3. CONTRACTOR TO CONFIRM ALL EQUIPMENT SPECS PRIOR TO CONSTRUCTION.
 4. CONTRACTOR TO VERIFY ALL OUTLET LOCATIONS.
 5. PROVIDE ISOLATING VALVE ON HOT AND COLD WATER LINES TO EACH PIECE OF PLUMBING FIXTURE. ALL ANGLE STOPS TO BE DAHL 1/4 TURN MINI BALL VALVE. NO ALTERNATE WILL BE ACCEPTABLE. (TYPICAL UNLESS NOTED OTHERWISE)
 6. WRAP ALL EXPOSED HOT WATER AND DRAIN PIPING AT HANDICAPPED LAVATORY WITH INSULATION. PROVIDE INSULATION AND COVERING FOR ALL BARRIER FREE KITCHEN SINK AND LAVATORY PIPING.
 7. EACH PLUMBING FIXTURE SHALL BE LOW WATER CONSUMPTION IN ACCORDANCE TO ONTARIO BUILDING CODE.
 8. PROVIDE ALL REQUIRED FITTINGS, TRAPS, VALVES, FAUCETS AND ESCUTCHEONS TO COMPLETE EACH FIXTURE INSTALLATION.
 9. SUBMIT SHOP DRAWINGS FOR REVIEW AND APPROVAL BEFORE ORDERING ANY FIXTURE.

HYDRONIC WALL FIN HEATER SCHEDULE													
TAG	MANUFACTURER	MODEL NO.	PRODUCT CODE	WORKING FLUID	HEIGHT (INCH)	DEPTH (INCH)	HEATING ELEMENT LENGTH (INCH)	ENCLOSURE LENGTH (FT)	NO. OF ROWS	HEATING (BTU/HR/FT)	FLOW (USGPM)	PRESSURE DROP (FT)	REMARKS
H-1	SIGMA	WALLFIN	SWE-S 24C075	WATER	24	5.25	-	3'-8"	2	1,100	0.33	-	SEE NOTES BELOW

NOTES:
 1. C/W 16 GAUGE SLANT TOP ENCLOSURE, LOW VOLTAGE TRANSFORMER, BASIC THERMOSTAT WITH LOCKABLE CAGE, ELECTRIC CONTROL VALVE, BALL VALVES & STRAINER WITH BLOWDOWN. MECHANICAL CONTRACTOR TO PROVIDE CONTROLS WIRING.
 2. CONTRACTOR SHALL ENSURE TO INCLUDE ALL REQUIRED ACCESSORIES AND FITTING FOR A FULLY FUNCTIONAL SYSTEM.
 3. ASSUMED HOT WATER SUPPLY/ RETURN TEMPERATURE: 140F/120F; CONTRACTOR TO SITE VERIFY EXISTING HYDRONIC SYSTEM TEMPERATURES.
 4. CONTRACTOR TO COORDINATE, INLET & OUTLET ORIENTATION ON SITE WITH EXISTING SYSTEM. COORDINATE COLOR WITH ARCH.
 5. COORDINATE UNIT DIMENSIONS WITH EXISTING SPACE PRIOR TO SHOP DRAWING SUBMISSION.

NO.	DESCRIPTION	DATE
C	ISSUED FOR ADDENDUM NO. 1	2024-04-24
B	ISSUED FOR TRACKER	MARCH 2024
A	ISSUED FOR PERMIT	2024-02-02

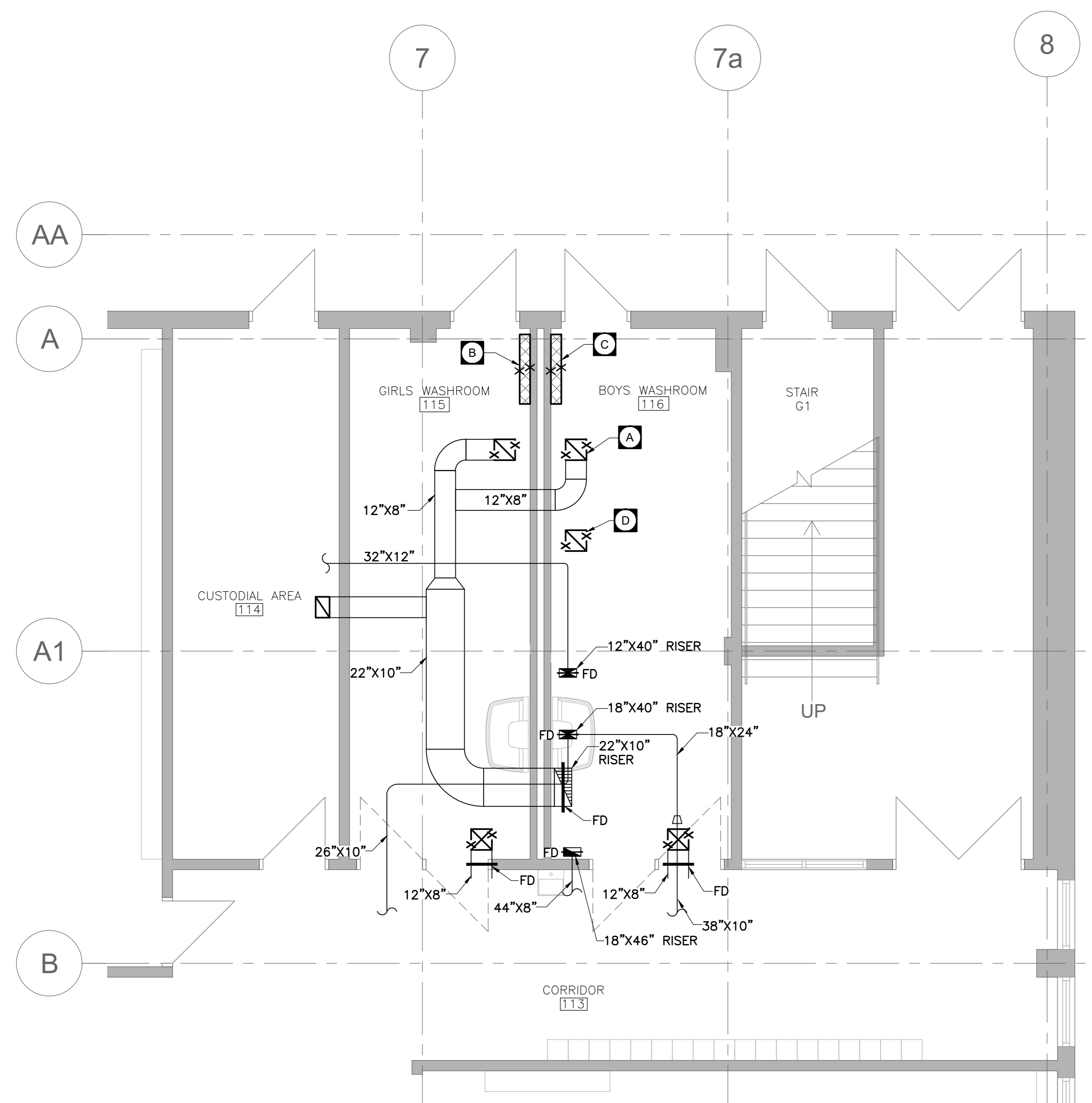


CK ENGINEERING INC
 MECHANICAL | ELECTRICAL
 2400 INDUSTRIAL STREET
 BURLINGTON, ON L7P 1A5
 www.ckengs.com | info@ckengs.net | 905.631.1115

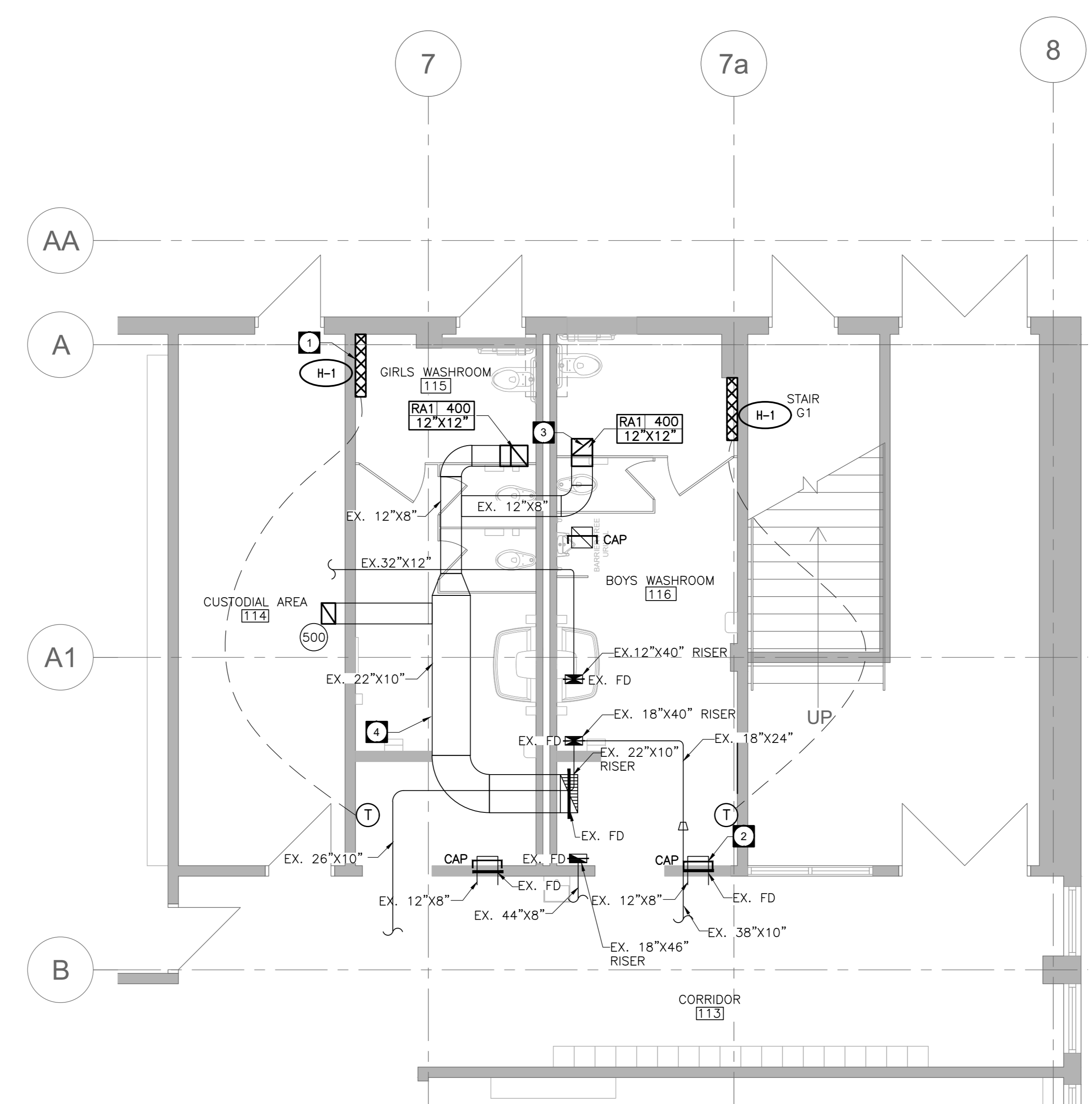


**HESS STREET
 ELEMENTARY SCHOOL
 RENOVATION PROJECT**
 107 Hess Street North
 Hamilton, ON L8R 2T1

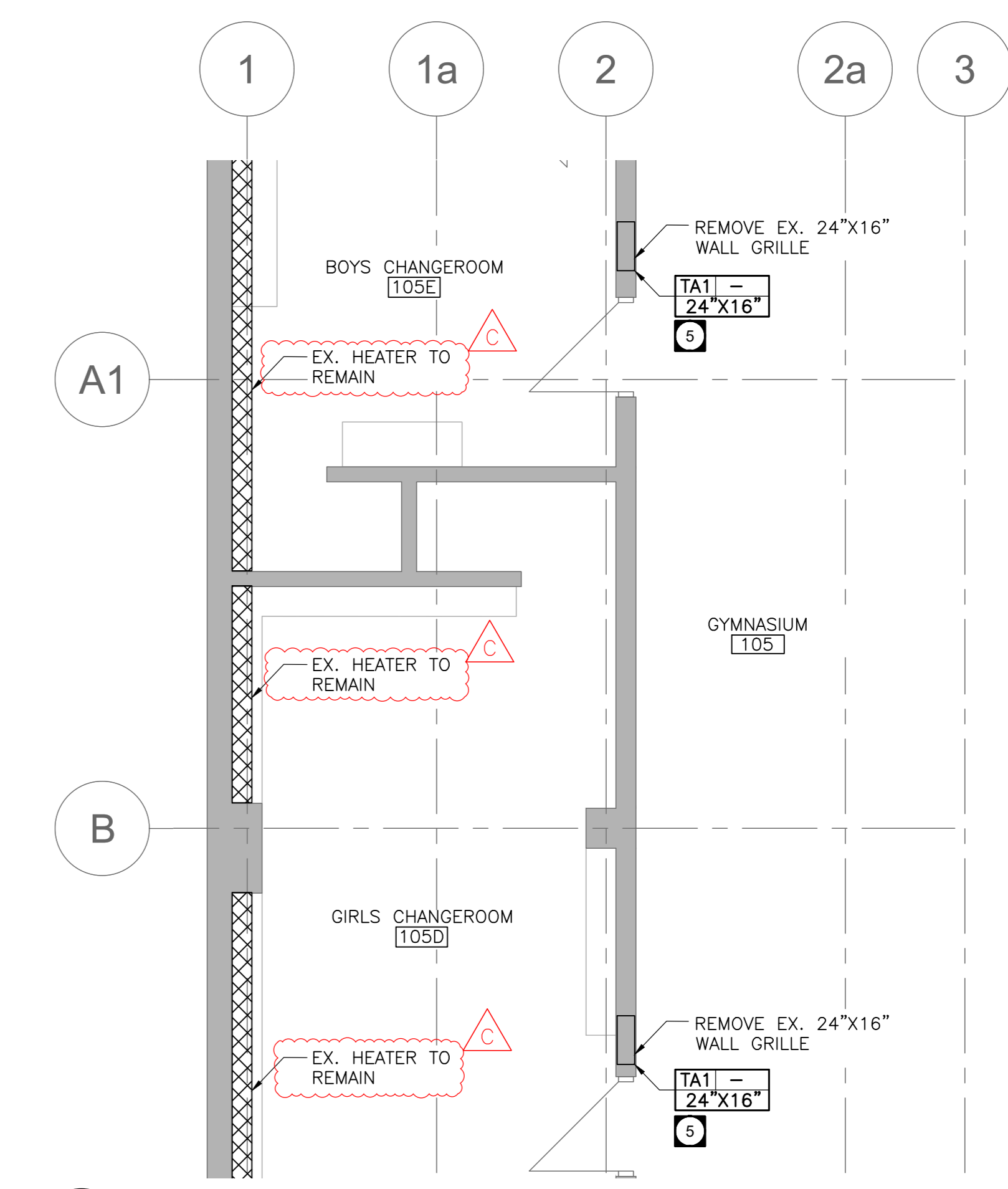
SHEET NO.	DRAWN BY	CHECKED BY
M 0.03	VA	BM
PROJECT NO.	23035	SCALE
AS NOTED		



1 PARTIAL GROUND FLOOR GIRLS & BOYS W/R H.V.A.C. DEMOLITION
SCALE: 1/4"=1'-0"



2 PARTIAL GROUND FLOOR GIRLS & BOYS W/R NEW H.V.A.C. LAYOUT
SCALE: 1/4"=1'-0"



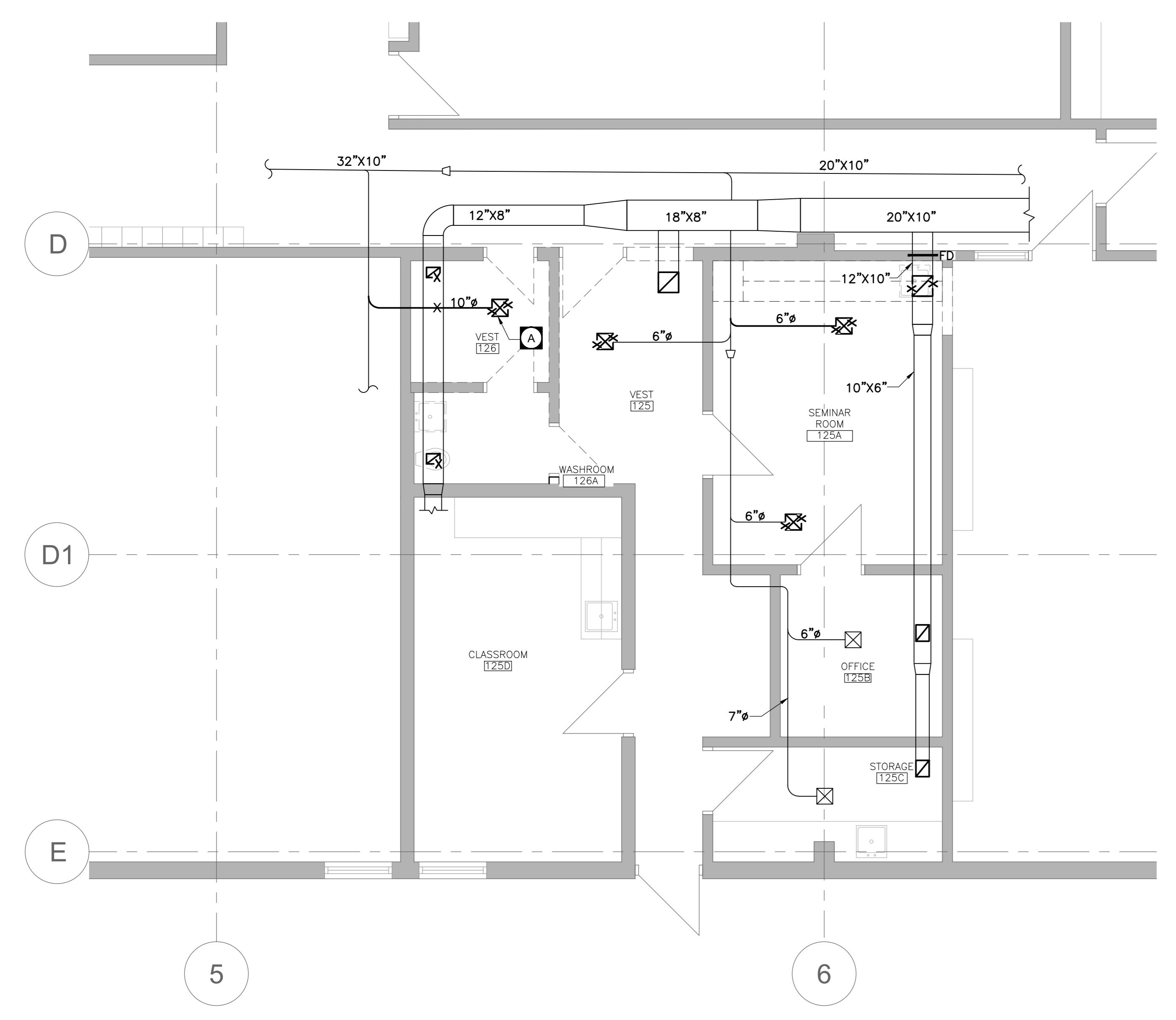
5 GYM DEMO & NEW H.V.A.C. LAYOUT
SCALE: 1/4"=1'-0"

- GENERAL DEMOLITION NOTES:**
- REVIEW DRAWINGS BEFORE COMMENCING WITH DEMOLITION WORK
 - REMOVE ALL EQUIPMENT, PIPING, STEEL SUPPORTS, CONTROLS, PLUMBING MATERIAL, HOUSE KEEPING PAD, SHOWN APPROXIMATELY WITH 'X' THROUGHOUT (UNLESS OTHERWISE INDICATED)
 - THIS DRAWING DOES NOT SHOW ALL HIDDEN OR CONCEALED PIPING, DUCTS, PLUMBING AND EQUIPMENT TO BE REMOVED.
 - REFER TO ARCHITECTURAL DRAWINGS FOR WALL REPAIR DETAIL UNLESS NOTED OTHERWISE.
 - THE EXISTING SERVICES SHOWN ON THIS DRAWING HAVE BEEN TAKEN FROM THE SITE INVESTIGATION. THIS INFORMATION MUST NOT BE ASSUMED TO BE COMPLETE OR UP-TO-DATE. THE MECHANICAL CONTRACTOR SHALL CARRY OUT A FULL SURVEY OF ALL EXISTING SERVICES AND STRUCTURE TO CONFIRM THE SIZE AND LOCATION OF THESE SERVICES, BEFORE THE COMMENCEMENT OF ANY WORK.

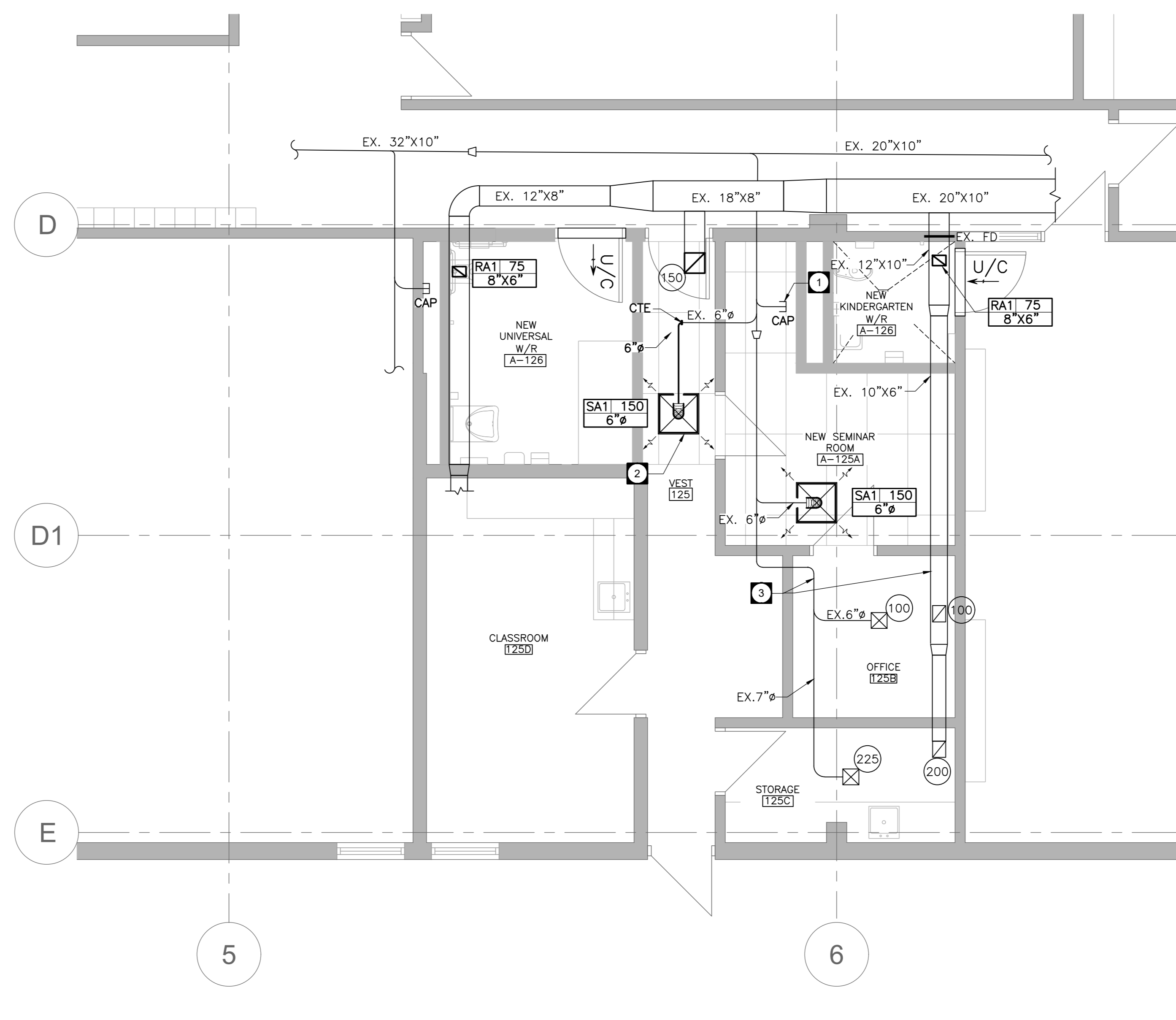
- DEMOLITION DRAWING NOTES:**
- A** REMOVE AIR SUPPLY OR EXHAUST GRILLES AND REMOVE THE DUCT CONNECTIONS. (TYP.)
 - B** REMOVE PERIMETER RADIATORS C/W HYDRONIC PIPING, THERMOSTAT. (TYP.)
 - C** REMOVE AND RELOCATE THE HYDRONIC HEATERS AND EXTEND THE 3/4" HOT WATER SUPPLY AND RETURN LINES UP TO THE MAINS. (TYP.)
 - D** REMOVE EXISTING GRILLE AND CAP THE CONNECTED DUCT.

- NEW GENERAL NOTES:**
- THE EXISTING SERVICES SHOWN ON THIS DRAWING HAVE BEEN TAKEN FROM EXISTING DRAWINGS AND SITE SURVEY. THIS INFORMATION MUST NOT BE ASSUMED TO BE COMPLETE OR UP-TO-DATE. THIS MECHANICAL CONTRACTOR SHALL CARRYOUT A FULL SURVEY OF ALL EXISTING SERVICES AND STRUCTURE TO CONFIRM THE SIZE AND LOCATION OF THESE SERVICES, BEFORE THE COMMENCEMENT OF ANY WORK.
 - THIS DRAWING DOES NOT SHOW ALL CONCEALED PIPING, DUCT AND EQUIPMENT. CONTRACTOR TO COORDINATE WITH LIGHTING FIXTURES AND OTHER ELECTRICAL EQUIPMENT. CONTRACTOR TO VERIFY ALL EXISTING SITE CONDITIONS INCLUDING DUCTWORK SIZES AND EQUIPMENT.
 - CONTRACTOR TO ALLOW FOR RELOCATION OF EXISTING SERVICES AS REQUIRED TO ACCOMMODATE THIS WORK.
 - FIRESTOP AND SEAL ALL DUCTWORK AND PIPING WALL/CEILING/FLOOR PENETRATIONS THROUGH FIRE RATED ASSEMBLIES.
 - REPAIR ANY DAMAGE CAUSED BY THIS WORK AND MAKE GOOD.
 - REMOVE ALL DEBRIS AND CLEAN FROM SITE DAILY.
 - CONTRACTOR SHALL ADJUST THE NEW DUCTWORK ELEVATION AS REQUIRED TO MAINTAIN THE CODE PRESCRIBED MINIMUM HEAD CLEARANCE, SATISFYING THE DESIGN INTENT.
 - CONTRACTOR TO UPSIZE DUCTWORK WITH INTERNALLY LINED ACOUSTIC INSULATION TO MAINTAIN CLEAR INSIDE DIMENSION AS INDICATED.
 - INSULATE FIRST 10 FEET OF ALL DUCTS CONNECTING TO EXTERIOR WALL.
 - ALL NEW DUCT MOUNTED GRILLES MUST BE ANGLED AS PER DETAIL. NO EXCEPTION SHALL BE ALLOWED.
 - G.G. TO UNDERCUT ALL NEW DOOR OF WASHROOM BY 20MM FOR TRANSFER AIR WHERE SPECIFIED.
 - MECHANICAL CONTRACTOR SHALL COORDINATE WITH GENERAL CONTRACTOR TO PROVIDE ACCESS PANEL FOR ALL EQUIPMENTS THAT REQUIRES ACCESS FOR MAINTENANCE.
 - PROVIDE AIR TESTING & BALANCING FOR NEW DIFFUSERS AS WELL AS EXISTING DIFFUSERS WHERE FLOWRATES ARE INDICATED. PROVIDE WATER BALANCING FOR NEW OR RELOCATED HYDRONIC RADIATORS.

- NEW DRAWING NOTES:**
- INSTALL NEW HYDRONIC WALL/FIN HEATERS C/W NEW WALL SUPPORTS AND EXTEND NEW HOT WATER SUPPLY AND RETURN LINES UP TO THE NEW LOCATIONS. PROVIDE NEW AIR RELIEF VALVES. CONNECT CONTROL VALVE AND ROOM TEMP. SENSOR TO BAS.
 - CAP AND MAKE AIRTIGHT ALL UNUSED BRANCH CONNECTIONS AT SUPPLY DUCTS. (TYP.)
 - PROVIDE NEW EXHAUST AND SUPPLY GRILLES AND DUCTWORK AT THE SPECIFIED LOCATIONS.
 - EXISTING DUCT BRANCH TO BE RE-BALANCED.
 - PROVIDE NEW TRANSFER AIR GRILLES AS INDICATED.



3 PARTIAL GROUND FLOOR NEW UNIVERSAL W/R & NEW SEMINAR ROOM H.V.A.C. DEMOLITION
SCALE: 1/4"=1'-0"



4 PARTIAL GROUND FLOOR NEW UNIVERSAL W/R & NEW SEMINAR ROOM NEW H.V.A.C. LAYOUT
SCALE: 1/4"=1'-0"

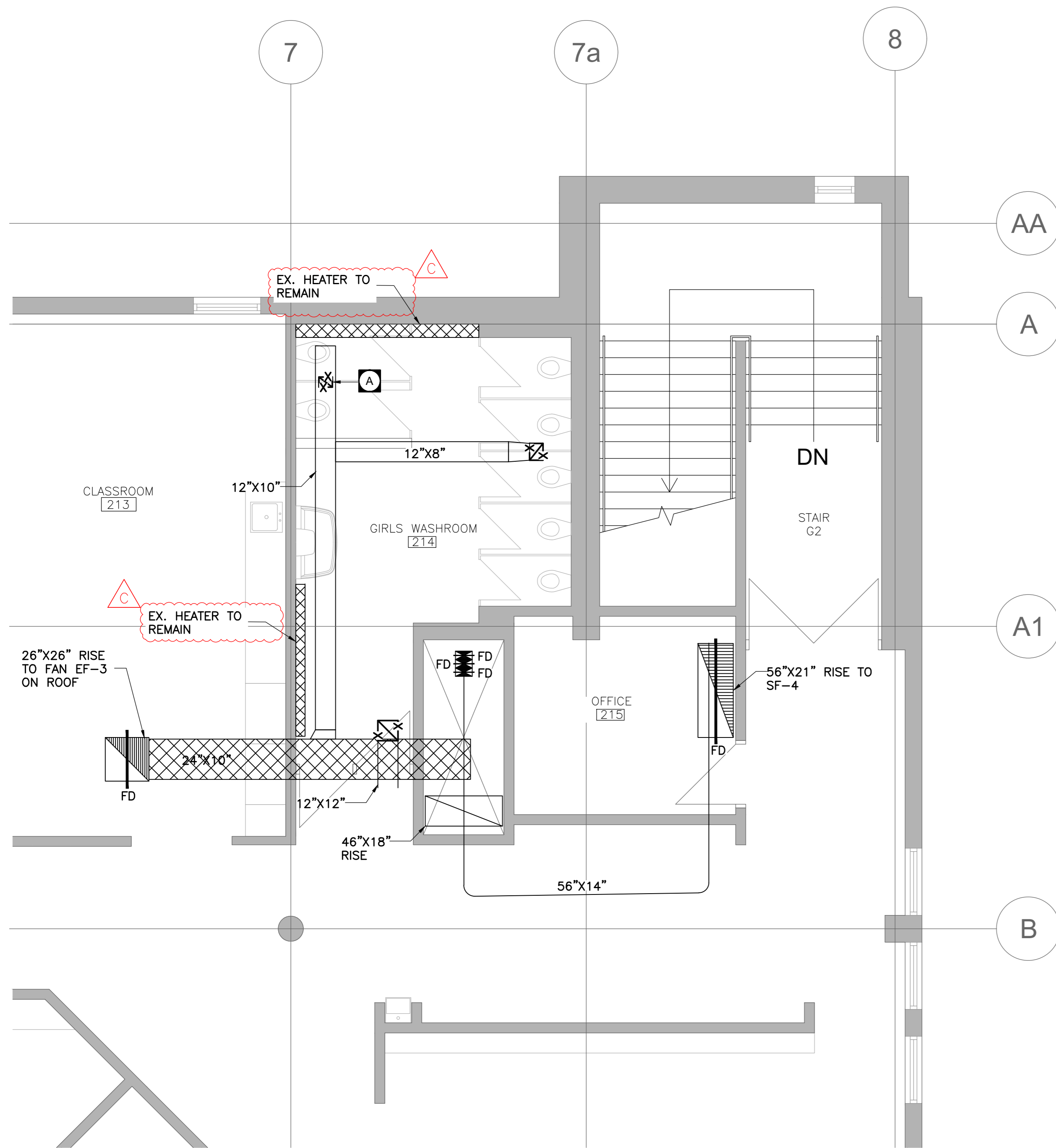
NO.	DESCRIPTION	DATE
C	ISSUED FOR ADDENDUM NO. 1	2024.04.24
B	ISSUED FOR TENDER	MARCH 2024
A	ISSUED FOR PERMIT	2024.02.02



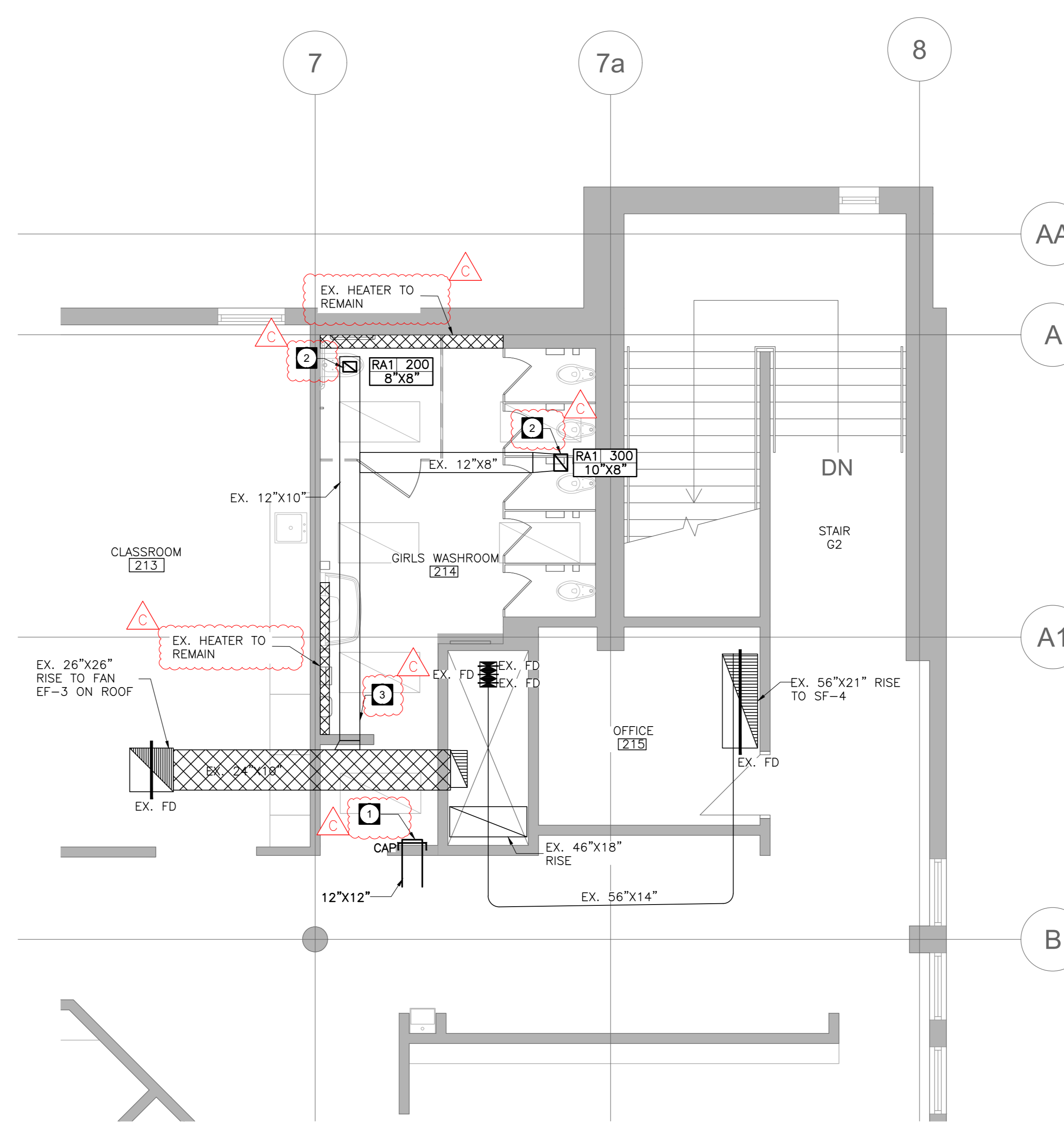
HESS STREET ELEMENTARY SCHOOL RENOVATION PROJECT
107 Hess Street North
Hamilton, ON L8R 2T1

DESIGNED BY	DATE
STRUCTURAL CONSULTANT	
MECHANICAL CONSULTANT	
ELECTRICAL CONSULTANT	

SHEET NO.	PROJECT NO.	CHECKED BY
M 1.01	23035	BM
SCALE:		AS NOTED



1 PARTIAL SECOND FLOOR GIRLS W/R H.V.A.C. DEMOLITION
SCALE: 1/4"=1'-0"



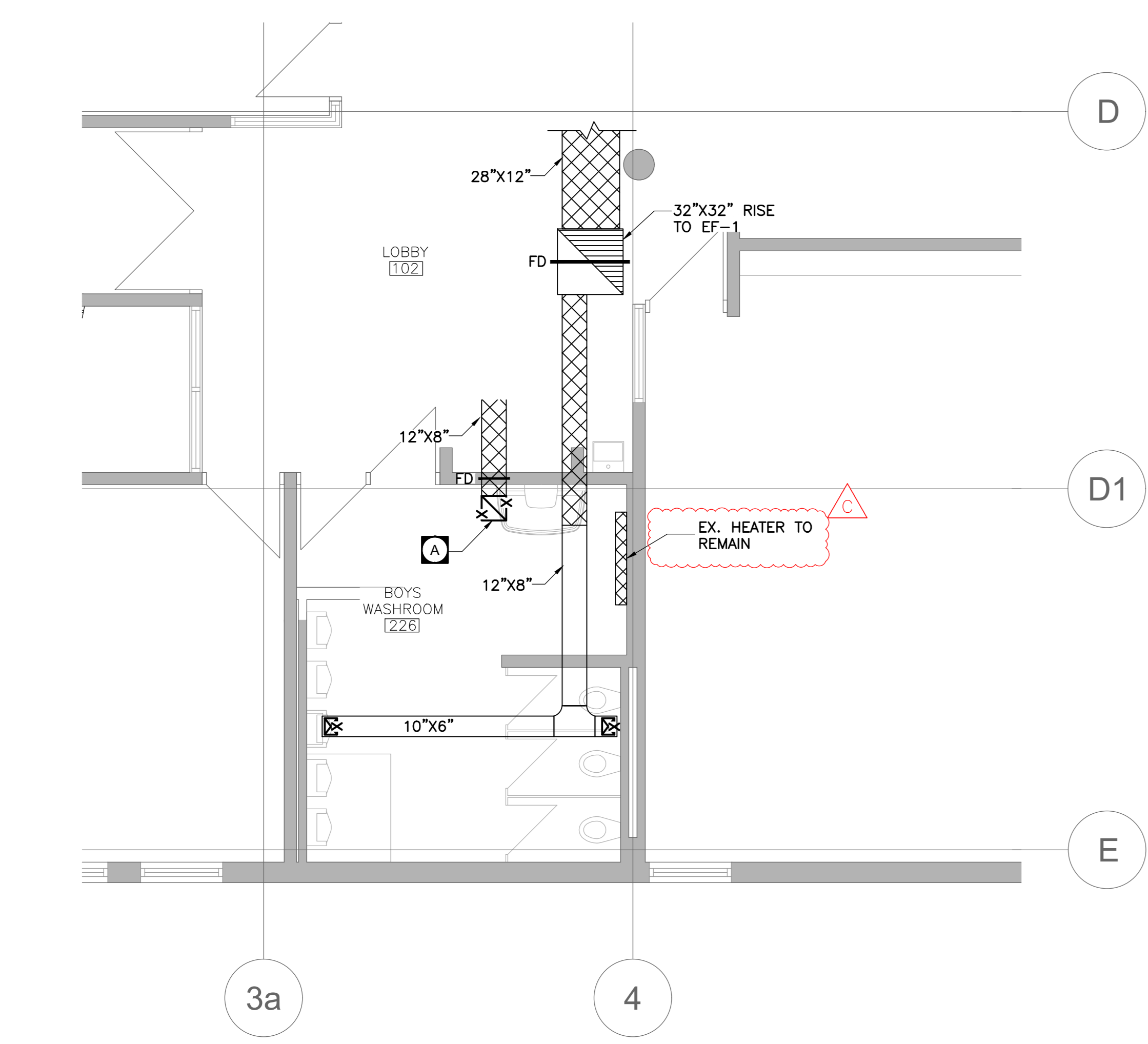
2 PARTIAL SECOND FLOOR GIRLS W/R NEW HVAC LAYOUT
SCALE: 1/4"=1'-0"

- GENERAL DEMOLITION NOTES:**
- REVIEW DRAWINGS BEFORE COMMENCING WITH DEMOLITION WORK
 - REMOVE ALL EQUIPMENT, PIPING, STEEL SUPPORTS, CONTROLS, PLUMBING MATERIAL, HOUSE KEEPING PAD, SHOWN APPROXIMATELY WITH 'X' THROUGHOUT (UNLESS OTHERWISE INDICATED)
 - THIS DRAWING DOES NOT SHOW ALL HIDDEN OR CONCEALED PIPING, DUCTS, PLUMBING AND EQUIPMENT TO BE REMOVED.
 - REFER TO ARCHITECTURAL DRAWINGS FOR WALL REPAIR DETAIL UNLESS NOTED OTHERWISE.
 - THE EXISTING SERVICES SHOWN ON THIS DRAWING HAVE BEEN TAKEN FROM THE SITE INVESTIGATION. THIS INFORMATION MUST NOT BE ASSUMED TO BE COMPLETE OR UP-TO-DATE. THE MECHANICAL CONTRACTOR SHALL CARRY OUT A FULL SURVEY OF ALL EXISTING SERVICES AND STRUCTURE TO CONFIRM THE SIZE AND LOCATION OF THESE SERVICES, BEFORE THE COMMENCEMENT OF ANY WORK.

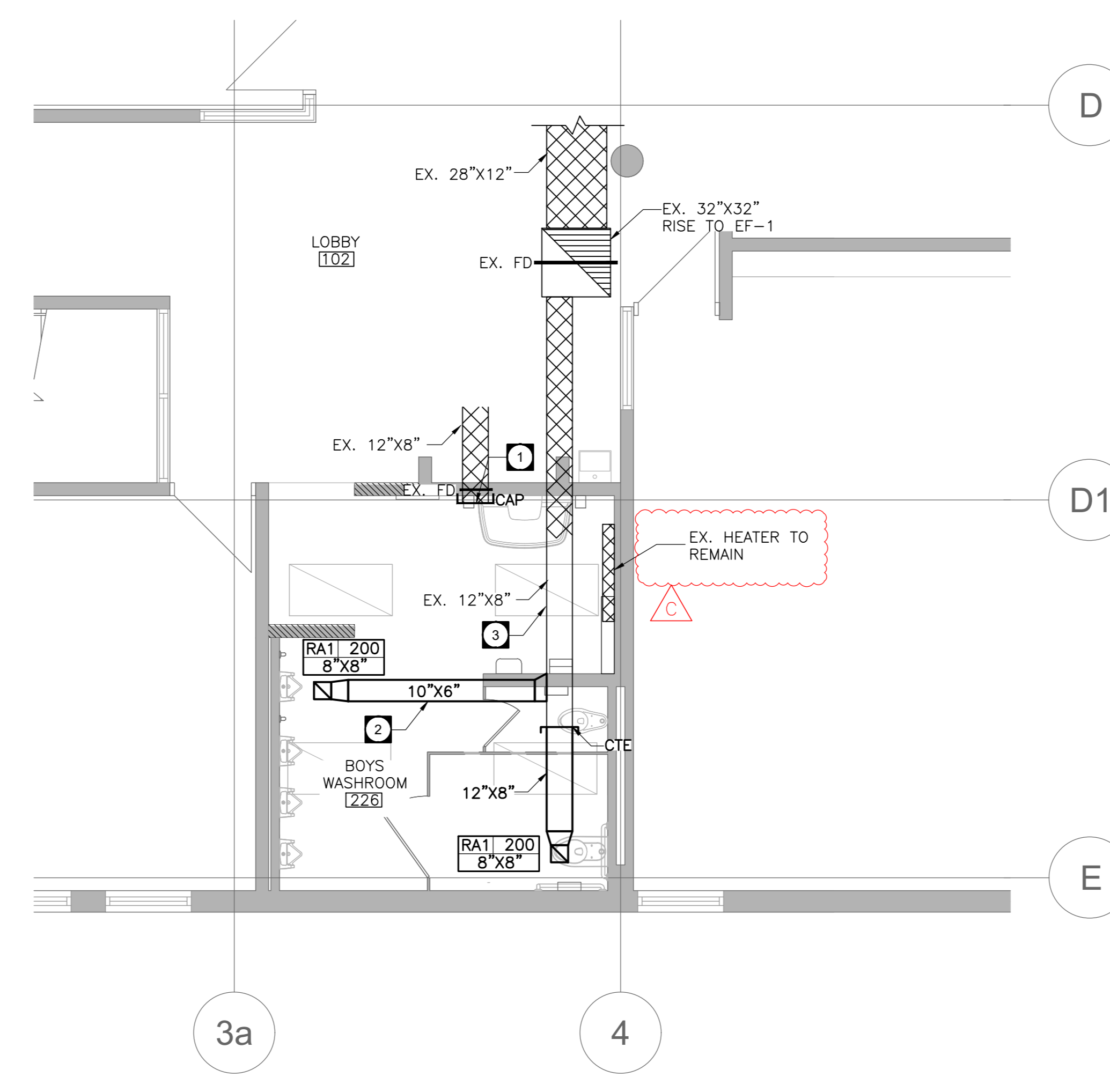
- DEMOLITION DRAWING NOTES:**
- A** REMOVE AIR SUPPLY OR EXHAUST GRILLES AND REMOVE THE DUCT CONNECTIONS. (TYP.)
 - B** REMOVE PERIMETER RADIATORS C/W HYDRONIC PIPING, THERMOSTAT. (TYP.)
 - C** REMOVE AND RELOCATE THE HYDRONIC HEATERS AND EXTEND THE 3/4" HOT WATER SUPPLY AND RETURN LINES UP TO THE MAINS. (TYP.)
 - D** REMOVE EXISTING GRILLE AND CAP THE CONNECTED DUCT.

- NEW GENERAL NOTES:**
- THE EXISTING SERVICES SHOWN ON THIS DRAWING HAVE BEEN TAKEN FROM EXISTING DRAWINGS AND SITE SURVEY. THIS INFORMATION MUST NOT BE ASSUMED TO BE COMPLETE OR UP-TO-DATE. THIS MECHANICAL CONTRACTOR SHALL CARRY OUT A FULL SURVEY OF ALL EXISTING SERVICES AND STRUCTURE TO CONFIRM THE SIZE AND LOCATION OF THESE SERVICES, BEFORE THE COMMENCEMENT OF ANY WORK.
 - THIS DRAWING DOES NOT SHOW ALL CONCEALED PIPING, DUCT AND EQUIPMENT. CONTRACTOR TO COORDINATE WITH LIGHTING FIXTURES AND OTHER ELECTRICAL EQUIPMENT. CONTRACTOR TO VERIFY ALL EXISTING SITE CONDITIONS INCLUDING DUCTWORK SIZES AND EQUIPMENT.
 - CONTRACTOR TO ALLOW FOR RELOCATION OF EXISTING SERVICES AS REQUIRED TO ACCOMMODATE THIS WORK.
 - FIRESTOP AND SEAL ALL DUCTWORK AND PIPING WALL/CEILING/FLOOR PENETRATIONS THROUGH FIRE RATED ASSEMBLIES.
 - REPAIR ANY DAMAGE CAUSED BY THIS WORK AND MAKE GOOD.
 - REMOVE ALL DEBRIS AND CLEAN FROM SITE DAILY.
 - CONTRACTOR SHALL ADJUST THE NEW DUCTWORK ELEVATION AS REQUIRED TO MAINTAIN THE CODE PRESCRIBED MINIMUM HEAD CLEARANCE, SATISFYING THE DESIGN INTENT.
 - CONTRACTOR TO UPSIZE DUCTWORK WITH INTERNALLY LINED ACOUSTIC INSULATION TO MAINTAIN CLEAR INSIDE DIMENSION AS INDICATED.
 - INSULATE FIRST 10 FEET OF ALL DUCTS CONNECTING TO EXTERIOR WALL.
 - ALL NEW DUCT MOUNTED GRILLES MUST BE ANGLED AS PER DETAIL. NO EXCEPTION SHALL BE ALLOWED.
 - G.C. TO UNDERCUT ALL NEW DOOR OF WASHROOM BY 20MM FOR TRANSFER AIR WHERE SPECIFIED.
 - MECHANICAL CONTRACTOR SHALL COORDINATE WITH GENERAL CONTRACTOR TO PROVIDE ACCESS PANEL FOR ALL EQUIPMENTS THAT REQUIRES ACCESS FOR MAINTENANCE.
 - PROVIDE AIR TESTING & BALANCING FOR NEW DIFFUSERS AS WELL AS EXISTING DIFFUSERS WHERE FLOWRATES ARE INDICATED. PROVIDE WATER BALANCING FOR NEW OR RELOCATED HYDRONIC RADIATORS.

- NEW DRAWING NOTES:**
- 1** CAP AND MAKE AIRTIGHT ALL UNUSED BRANCH CONNECTIONS AT SUPPLY DUCTS. (TYP.)
 - 2** PROVIDE NEW EXHAUST AND SUPPLY GRILLES AND DUCTWORK AT THE SPECIFIED LOCATIONS.
 - 3** EXISTING DUCT BRANCH TO BE RE-BALANCED.



3 PARTIAL SECOND FLOOR BOYS W/R H.V.A.C. DEMOLITION
SCALE: 1/4"=1'-0"



4 PARTIAL SECOND FLOOR BOYS W/R NEW HVAC LAYOUT
SCALE: 1/4"=1'-0"

NO.	DESCRIPTION	DATE
C	ISSUED FOR ADDENDUM NO. 1	2024.04.24
B	ISSUED FOR TENDER	MARCH 2024
A	ISSUED FOR PERMIT	2024.02.02
REVISIONS		

CK ENGINEERING INC
MECHANICAL | ELECTRICAL
2400 INDUSTRIAL STREET
BURLINGTON, ON L7P 1A5
www.ckengs.com | info@ckengs.net | 905.631.1115



HESS STREET ELEMENTARY SCHOOL RENOVATION PROJECT
107 Hess Street North
Hamilton, ON L8R 2T1

The contractor shall ensure that all drawings are correct in every respect and shall be responsible for any errors and omissions which may occur in the drawings. The drawings shall not be used for construction until approved by the client and the contractor shall be responsible for any errors and omissions which may occur in the drawings.

ISSUED FOR	DATE	BY	CHECKED BY
FOR CONSTRUCTION	2024	VA	BM
STRUCTURAL CONSULTANT			
MECHANICAL CONSULTANT		CK	
ELECTRICAL CONSULTANT		CK	

SHEET TITLE
PARTIAL SECOND FLOOR H.V.A.C. DEMOLITION & NEW LAYOUT

SHEET NO.
M 1.02

PROJECT NO.
23035

SCALE
AS NOTED