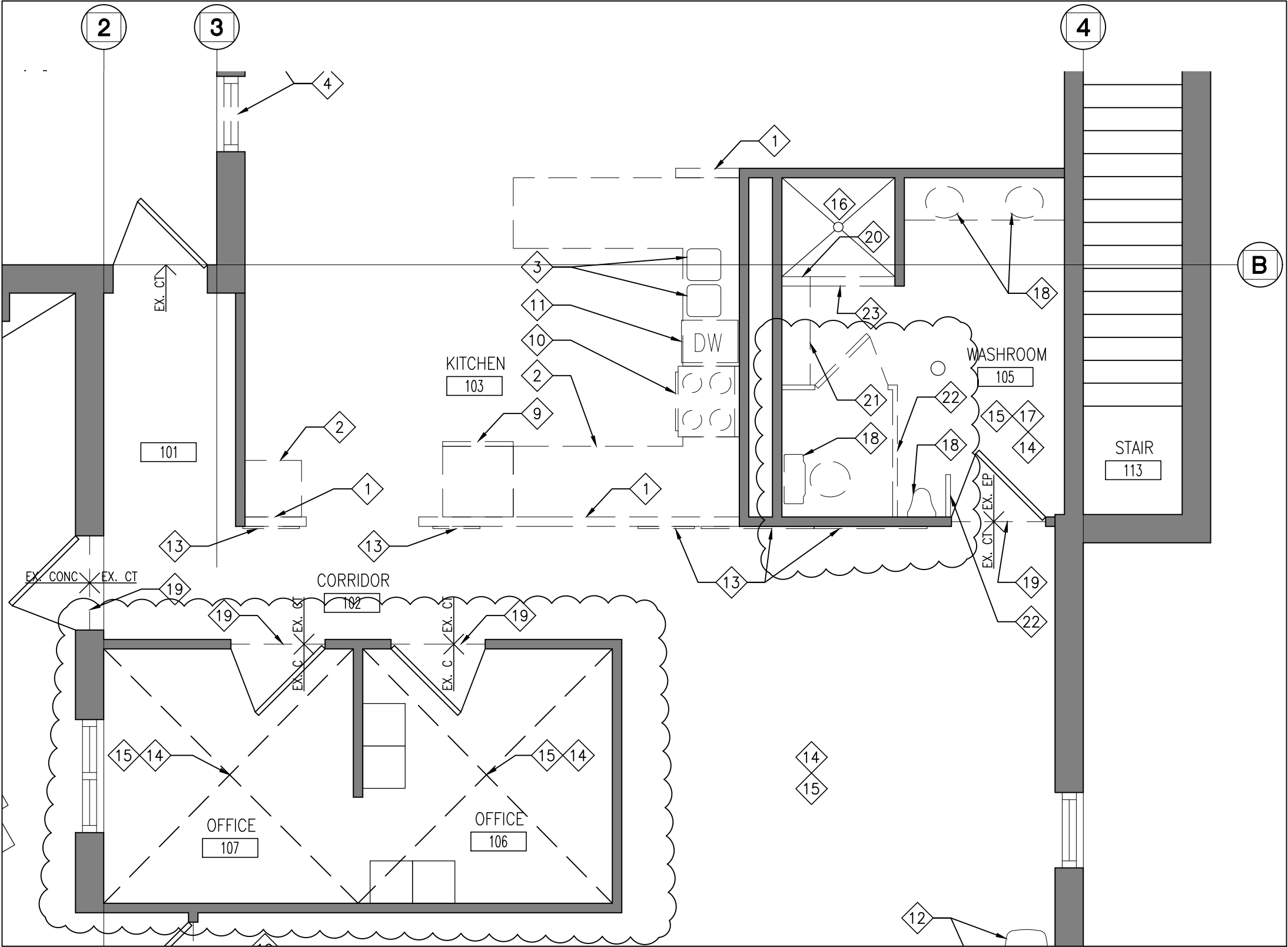


DEMOLITION NOTES

- 12 CAREFULLY REMOVE EXISTING COMPUTER DESK AND CHAIR AND RETURN TO OWNER.
- 13 CAREFULLY REMOVE BULLETIN/INFORMATION BOARD AND RETURN TO OWNER.
- 14 REMOVE EXISTING FLOOR FINISHES AND WALL BASE. PREPARE SURFACES TO RECEIVE NEW FINISHES
- 15 REMOVE EXISTING CEILING INCLUDING ALL FIXTURES AND EQUIPMENT. REFER TO ELECTRICAL FOR ADDITIONAL REQUIREMENTS.
- 16 REMOVE EXISTING WALL TILE.
- 17 CAREFULLY REMOVE EXISTING WASHROOM ACCESSORIES AND RE-INSTALL IN NEW WASHROOM. COORDINATE LOCATIONS WITH OWNER.
- 18 REMOVE EXISTING FIXTURES.
- 19 REMOVE EXISTING FLOOR TRANSITION STRIP.
- 20 REMOVE EXISTING MASONRY SHOWER WALL FOR EXTENTS SHOWN.
- 21 REMOVE EXISTING BENCH.
- 22 REMOVE AND DISPOSE OF EXISTING WASHROOM PARTITION.
- 23 REMOVE EXISTING CONCRETE CURB.
- 24 CAREFULLY REMOVE EXISTING CABINET AND RELOCATE TO BASEMENT. COORDINATE FINAL LOCATION W/ OWNER



PROJECT:
**INTERIOR ALTERATIONS
TO EXISTING FIRE HALL**

553 KINGSTON ROAD,
PICKERING, ONTARIO

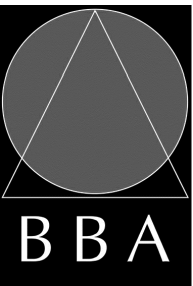
CITY OF PICKERING CULTURE & RECREATION DEPARTMENT

DRAWING:
**PART GROUND FLOOR
DEMOLITION PLAN
1/A201**

DO NOT SCALE THE DRAWINGS
CHECK AND VERIFY ALL DIMENSIONS AT THE SITE.

ALL DRAWINGS, SPECIFICATIONS AND RELATED DOCUMENTS ARE THE
COPYRIGHT PROPERTY OF THE CONSULTANT AND MUST BE RETURNED
UPON REQUEST. REPRODUCTION OF DRAWINGS IN PART OR WHOLE
WITHOUT THE PERMISSION OF THE CONSULTANT IS FORBIDDEN.

DRAWINGS ARE NOT TO BE USED FOR CONSTRUCTION UNTIL SIGNED
AND SEALED BY THE CONSULTANT.



**BARRY BRYAN
ASSOCIATES**

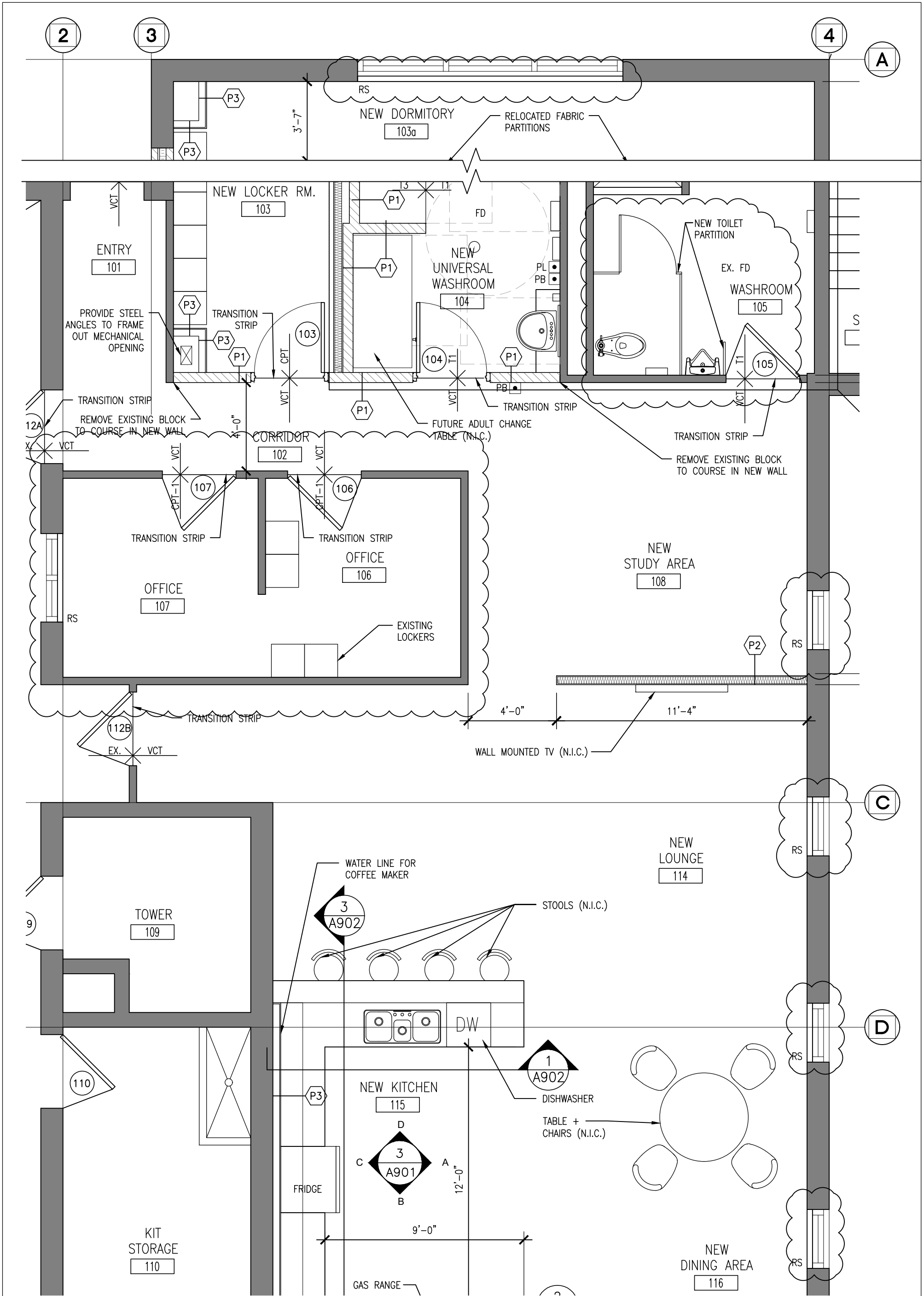
Architects
Engineers
Project Managers

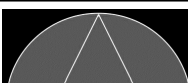
250 Water Street
Suite 201
Whitby, Ontario
L1N 0G5

Tel: (905) 666-5252
Fax: (905) 666-5256
e-mail: bba@bba-archeng.com

PROJECT NO:
17216

DESIGN BY: BBA	DCC CONTROL DATE:
DRAWN BY: LQ	% COMPLETE:
CHECKED BY: JT	INITIAL:
DATE: APRIL 9, 2024	
SCALE: 1/4" = 1'-0"	
FILE:	
DRAWING NO: SKA-01	



<div>PROJECT:</div> <div>INTERIOR ALTERATIONS TO EXISTING FIRE HALL</div> <div>553 KINGSTON ROAD, PICKERING, ONTARIO</div> <div>CITY OF PICKERING CULTURE & RECREATION DEPARTMENT</div>	<div>DRAWING:</div> <div>PART GROUND FLOOR PLAN 1/A202</div> <div>DO NOT SCALE THE DRAWINGS. CHECK AND VERIFY ALL DIMENSIONS AT THE SITE.</div> <div>ALL DRAWINGS, SPECIFICATIONS AND RELATED DOCUMENTS ARE THE COPYRIGHT PROPERTY OF THE CONSULTANT AND MUST BE RETURNED UPON REQUEST. REPRODUCTION OF DRAWINGS IN PART OR WHOLE WITHOUT THE PERMISSION OF THE CONSULTANT IS FORBIDDEN.</div> <div>DRAWINGS ARE NOT TO BE USED FOR CONSTRUCTION UNTIL SIGNED AND SEALED BY THE CONSULTANT.</div>	<div><div>BBA</div></div>	<div>BARRY BRYAN ASSOCIATES</div> <div>Architects Engineers Project Managers</div> <div>250 Water Street Suite 201 Whitby, Ontario L1N 0G5</div> <div>Tel: (905) 666-5252 Fax: (905) 666-5256 e-mail: bba@bba-archeng.com</div>		<table><tr><td>DESIGN BY: BBA</td><td>DOC CONTROL: DATE:</td></tr><tr><td>DRAWN BY: LQ</td><td>% COMPLETE:</td></tr><tr><td>CHECKED BY: JT</td><td>INITIAL:</td></tr><tr><td colspan="2">DATE: APRIL 9, 2024</td></tr><tr><td colspan="2">SCALE: 1/4" = 1'-0"</td></tr><tr><td colspan="2">FILE:</td></tr></table>		DESIGN BY: BBA	DOC CONTROL: DATE:	DRAWN BY: LQ	% COMPLETE:	CHECKED BY: JT	INITIAL:	DATE: APRIL 9, 2024		SCALE: 1/4" = 1'-0"		FILE:	
			DESIGN BY: BBA	DOC CONTROL: DATE:														
			DRAWN BY: LQ	% COMPLETE:														
			CHECKED BY: JT	INITIAL:														
			DATE: APRIL 9, 2024															
			SCALE: 1/4" = 1'-0"															
FILE:																		
PROJECT NO:		17216																
DRAWING NO:			SKA-02															

ROOM SCHEDULE												
ROOM			FLOOR	BASE	WALLS				CEILING	CEILING HEIGHT	REV.	REMARKS
NO.	ROOM NAME				NORTH	EAST	SOUTH	WEST				
101	ENTRY	MAT.	EX.	EX.	EX.	EX.	EX.	EX.	–	–		
		FIN.	VCT–1	RB–1	PT–1	PT–1	PT–1	PT–1	ACT–1	–		
102	CORRIDOR	MAT.	EX.	EX.	EX./CB	EX.	EX.	EX.	–	–		
		FIN.	VCT–1	RB–1	PT–1	PT–1	PT–1	PT–1	ACT–1	–		
103	NEW LOCKER RM.	MAT.	EX.	EX.	EX.	GB	EX./CB	EX./GB	–	–		
		FIN.	CPT–1	RB–1	PT–1	PT–1	PT–1	PT–1	ACT–1	–		
103a	NEW DORMITORY	MAT.	EX.	EX.	EX.	EX.	GB	EX./GB	–	–		
		FIN.	CPT–1	RB–1	PT–1	PT–1	PT–1	PT–1	ACT–1	–		
104	NEW UNIVERSAL WASHROOM	MAT.	EX.	EX.	EX./CB	EX.	EX.	CB	GB	–		SEE INTERIOR ELEVATIONS FOR EXTENTS OF WALL FINISHES
		FIN.	T–1/T–3	T–1/T–3	PT/T	PT/T	PT/T	PT/T	PT–3	–		
105	WASHROOM	MAT.	EX.	EX.	EX.	EX.	EX.	EX.	GB	–		SEE INTERIOR ELEVATIONS FOR EXTENTS OF WALL FINISHES
		FIN.	T–1/T–3	T–1/T–3	PT/T	PT/T	PT/T	PT/T	PT–3	–		
106	OFFICE	MAT.	EX.	EX.	EX.	EX.	EX.	EX.	–	–		
		FIN.	CPT–1	RB–1	EX.	EX.	EX.	EX.	ACT–1	–		
107	OFFICE	MAT.	EX.	EX.	EX.	EX.	EX.	EX.	–	–		
		FIN.	CPT–1	RB–1	EX.	EX.	EX.	EX.	ACT–1	–		
108	NEW STUDY AREA	MAT.	EX.	EX.	EX.	EX.	GB	EX.	–	–		
		FIN.	VCT–1	RB–1	PT–1	PT–1	PT–2	PT–1	ACT–1	–		
109	TOWER	MAT.	EX.	EX.	EX.	EX.	EX.	EX.	EX.	–		
		FIN.	EX.	EX.	EX.	EX.	EX.	EX.	EX.	–		
		MAT.	EX.	EX.	EX.	EX.	EX.	EX.	EX.			
		FIN.										

LEGEND			WALL SCHEDULE	PARTITION SCHEDULE
<div><div>CORRIDOR</div><div>CA</div><div>D</div><div>1</div><div>A000</div><div>C</div><div>A</div><div>B</div><div><div></div><div>NEW DOOR</div></div></div>	ROOM NAME	<div>VCT</div> <div>X</div> <div>T1</div> FLOOR FINISH TYPE	<div>W1</div> <div>3½" BRICK TO MATCH EXISTING</div> <div>1" AIR SPACE</div> <div>3½" RIGID INSULATION</div> <div>AIR BARRIER</div> <div>4" CONCRETE BLOCK</div> <div>COURSE IN INFILL WITH</div> <div>EXISTING BLOCK WALL</div> <div><div></div></div>	<div>P1</div> <div>NEW 5½" CONCRETE BLOCK</div> <div>WALL TO 6" ABOVE CEILING</div> <div>BULLNOSE ALL EXPOSED</div> <div>BLOCK WALL CORNERS</div> <div>5⁄8" GYPSUM BOARD</div> <div>35⁄8" METAL STUD W/</div> <div>ACOUSTIC BATTS</div> <div>5⁄8" GYPSUM BOARD</div> <div>P2</div> <div>5⁄8" GYPSUM BOARD</div> <div>35⁄8" METAL STUD</div> <div>TERMINATE 6" ABOVE ACT</div> <div>P3</div> <div>SAME AS 'P3' BUT ADD</div> <div>ACOUSTIC BATTS AND</div> <div>TERMINATE @ U/S OF EX.</div> <div>ROOF DECK.</div> <div>P4</div>
		<div>101</div> DOOR NUMBER		
	INTERIOR ELEVATION	<div>W1</div> WALL/PARTITION TAG		
		<div>1</div> WASHROOM ACCESSORY TAG		
		<div>+0000</div> FINISHED FLOOR ELEVATION		
		<div>RS</div> ROLLER SHADE		

PROJECT:

**INTERIOR ALTERATIONS
TO EXISTING FIRE HALL**

553 KINGSTON ROAD,
PICKERING, ONTARIO

CITY OF PICKERING CULTURE & RECREATION DEPARTMENT

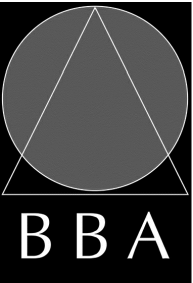
DRAWING:

**REVISED ROOM
SCHEDULE
A801**

DO NOT SCALE THE DRAWINGS
CHECK AND VERIFY ALL DIMENSIONS AT THE SITE.

ALL DRAWINGS, SPECIFICATIONS AND RELATED DOCUMENTS ARE THE
COPYRIGHT PROPERTY OF THE CONSULTANT AND MUST BE RETURNED
UPON REQUEST. REPRODUCTION OF DRAWINGS IN PART OR WHOLE
WITHOUT THE PERMISSION OF THE CONSULTANT IS FORBIDDEN.

DRAWINGS ARE NOT TO BE USED FOR CONSTRUCTION UNTIL SIGNED
AND SEALED BY THE CONSULTANT.



**BARRY BRYAN
ASSOCIATES**

Architects
Engineers
Project Managers

250 Water Street
Suite 201
Whitby, Ontario
L1N 0G5

Tel: (905) 666-5252
Fax: (905) 666-5256
e-mail: bba@bba-archeng.com

PROJECT NO:
17216

DESIGN BY: BBA	DCC CONTROL DATE:
DRAWN BY: LQ	% COMPLETE:
CHECKED BY: JT	INITIAL:
DATE: APRIL 9, 2024	
SCALE: N.T.S.	
FILE:	
DRAWING NO: SKA-03	

PART 1 GENERAL

1.1 General

- .1 Conform to the requirements of Division 1.

1.2 Related Sections

- .1 Section 05 50 00 Metal Fabrications
- .2 Section 10 28 10 Toilet and Bath Accessories

1.3 References

- .1 ASTM International (ASTM)
 - .1 ASTM A480/A480M-22 Standard Specification for General Requirements for Flat-Rolled Stainless and Heat-Resisting Steel Plate, Sheet, and Strip
 - .2 ASTM E84-22 Standard Test Method for Surface Burning Characteristics of Building Materials
- .2 CSA Group (CSA)
 - .1 CSA-B651-12 Accessible Design for the Built Environment.
- .3 American National Standards Association (ANSI)
 - .1 ANSI/NEMA LD 3-2005 High-Pressure Decorative Laminates (HPDL)
- .4 Underwriters Laboratories of Canada (ULC)
 - .1 CAN/ULC-S102 Surface Burning Characteristics of Building Materials and Assemblies
- .5 Accessibility for Ontarians with Disabilities Act (AODA)

1.4 Submittals

- .1 Make submittals in accordance with Section 01 33 00 – Submittal Procedures.
- .2 Product Data:
 - .1 Submit manufacturer's printed product literature for toilet partitions or components, specifications and datasheet and include product characteristics, performance criteria, physical size, finish and limitations.
 - .2 Submit duplicate copies of manufacturer's standard colour charts for selection by the Consultant.
- .3 Shop Drawings:
 - .1 Shop drawings: Indicate partition layout.
 - .2 Show and describe in detail materials, finishes, dimensions, details of connections and fastenings, elevations, plans, sections, thicknesses, metal thickness, hardware and any other pertinent information.
- .4 Samples:
 - .1 Submit duplicate 300 x 300 mm samples of panel showing finish on both sides, two finished edges and core construction.
 - .2 Submit duplicate representative samples of each hardware item, including brackets, fastenings and trim.
- .5 Quality Control Submittals: submit following in accordance with Section 01 45 00 - Quality Control.
 - .1 Manufacturer's Instructions: submit manufacturer's installation instructions and special handling criteria, installation sequence and cleaning procedures.
- .6 Closeout Submittals:
 - .1 Provide maintenance data for plastic toilet compartments for incorporation into manual

specified in Section 01 78 00 - Closeout Submittals.

1.5 Shipping, Handling and Storage

- .1 Refer to Section 01 61 00 – Common Product Requirements.
- .2 Deliver, handle and store materials in accordance with manufacturer's printed instructions.
- .3 Protect finished surfaces during shipment and installation. Do not remove until immediately prior to final inspection.

1.6 Waste Management and Disposal

- .1 Refer to Section 01 74 19 – Construction Waste Management and Disposal.

1.7 Warranty

- .1 Warrant the work of this Section against defects of workmanship and material, for a period of two years from the date of Substantial Performance and agree to make good promptly any defects which occur or become apparent within the warranty period.

PART 2 PRODUCTS

2.1 Approved Manufacturers

- .1 Compartments and cubicles as manufactured by the following may be used subject to approval of product specifications and details by the Consultant:
 - .1 Bobrick Washroom Equipment of Canada Ltd.
 - .2 Buddsteel Architectural Products. Teeswater Ontario
 - .3 Edwards Door Systems Ltd. Sarnia, Ontario
 - .4 ASI Watrous
 - .5 Bradley Corporation

2.2 Design

- .1 Solid phenolic core overhead braced toilet partitions with operational full height vandal resistant hardware.
 - .1 Standard of acceptance: Bobrick Model 1092G Series.
- .2 Urinal Screens: Solid phenolic core wall hung urinal screens
 - .1 Standard of Acceptance: Bobrick 1095 Sierra Series, Wall-Hung Urinal Privacy Screens.
 - .1 Brackets: 3 mm, double thickness.
- .3 Supply and install all required toilet partitions, change cubicles and urinal screens complete with all required hardware and accessories.
- .4 All cubicles shall have gap free design with zero sight lines.
- .5 Colours will be selected by the Consultant from the manufacturer's standard range of colours. Up to two colours will be selected.

2.3 Materials

- .1 Materials shall meet NFPA Class B, UBC Class II, CAN/ULC S102 Fire resistance standards as follows:
 - .1 Flame Spread Index: 45 for panels and stiles.
 - .2 Smoke Developed Index: 120 for panels, 95 for stiles.
 - .3 Class B.
- .2 Solid phenolic material for stiles, panels, doors and screens.
 - .1 Phenolic Construction: Solidly fused high pressure laminate with matte-finish melamine surfaces; integrally bonded coloured face sheets and black phenolic-resin core.
 - .2 Phenolic Edges: Black; brown edges not acceptable.
- .3 Finished Thickness:
 - .1 Stiles and Doors: 19 mm
 - .1 Finished thickness of doors and stiles to ensure flush front.
 - .2 Panels and Screens: 13 mm

2.4 Hardware

- .1 Stiles: Floor-Anchored stiles furnished with expansion shields and threaded rods.
 - .1 Leveling Devices: 5 mm thick, corrosion-resistant, chromate-treated, double zinc-plated steel angle leveling bar bolted to stile; furnished with 10 mm diameter threaded rods, hex nuts, lock washers, flat washers, spacer sleeves, expansion anchors, and shoe retainers.
 - .2 Stile Shoes: One-piece, 0.8 mm, 18-8, Type 304 stainless steel, 102 mm height; tops with 90 degree return to stile. One-piece shoe capable of adapting to 19 mm or 25 mm stile thickness and capable of being fastened (by clip) to stiles starting at wall line.
- .2 Compliance: Operable with one hand, without tight grasping, pinching, or twisting of the wrist, and force to operate does not exceed five pounds. Door pull: Barrier-free type suited for out-swinging doors, stainless steel. Conform to AODA and Ontario Building Code requirements.
- .3 Emergency Access: Hinges, latch allow door to be lifted over keeper from outside compartment.
- .4 Materials: 18-8, Type 304, heavy-gauge stainless steel with satin finish. Chrome-plated "Zamak", aluminum, or extruded plastic hardware not acceptable.
- .5 Fastening: Hardware secured to door and stile by through-bolted, theft-resistant, pin-in-head Torx stainless steel machine screws into factory-installed, threaded brass inserts. Fasteners secured directly into core not acceptable.
- .6 Threaded Brass Inserts: Factory-installed; withstand direct pull force exceeding 680 kg per insert.
- .7 Coat hook: combination hook and rubber door bumper, stainless steel. Projecting no more than 29 mm from face of door
- .8 Mounting: Hinges, keepers, latches, clothes hooks and their fasteners concealed inside compartment. Exposed hinges, keepers, latches, clothes hooks and their fasteners on exterior of compartment not acceptable with the exception of accessible compartments.
- .9 Hardware Type: Institutional hardware (Bobrick Type .67 or equivalent).
 - .1 Latching: 2 mm sliding door latch, 2 mm keeper; latch slides on shock-resistant nylon track. Twist-style door latch operation not acceptable.
 - .2 Hinges: Full height, 1.6 mm stainless steel with satin finish, self-closing, 3 section hinges.
 - .3 Mounting Brackets: 1.3 mm stainless steel and extend full height of panel.

- .4 U-Channels: Secure panels to stiles.
- .5 Angle Brackets: Secure stiles-to-walls and panels-to-walls.

2.5 Fabrication

- .1 Shop fabricate partitions and screens. Take site measurements for areas where partitions are to be located and fabricate partitions to suit site dimensions.
- .2 Fabricate to reviewed shop drawings and manufacturer's standards.
- .3 Toilet Partition Doors: 1473 mm high; 610 and 810 mm wide. Provide 305mm floor clearance
- .4 Urinal Screens: 1070 mm high x 456 mm wide.

PART 3 EXECUTION

3.1 Manufacturer's Instructions

- .1 Compliance: comply with manufacturer's written recommendations or specifications, including product technical bulletins, handling, storage and installation instructions, and datasheets.

3.2 Examination

- .1 Check areas scheduled to receive compartments for correct dimensions, plumbness of walls, and soundness of surfaces that would affect installation of mounting brackets.
- .2 Verify spacing of plumbing fixtures to assure compatibility with installation of compartments.
- .3 Do not begin installation of compartments until conditions are satisfactory.

3.3 Installation

- .1 Ensure supplementary anchorage is in place.
- .2 Do work in accordance with CSA-B651.
- .3 Install products in strict compliance with manufacturer's written instructions and recommendations, including the following:
 - .1 Verify blocking and supports in walls and ceilings have been installed properly at points of attachment.
 - .2 Verify location does not interfere with door swings or use of fixtures.
 - .3 Use fasteners and anchors suitable for substrate and project conditions
 - .4 Install units rigid, straight, plumb, and level.
 - .5 Conceal evidence of drilling, cutting, and fitting to room finish.
 - .6 Test for proper operation.
- .4 Adjust hardware for proper operation after installation. Set hinge cam on in-swinging doors to hold doors open when unlatched. Set hinge cam on out-swinging doors to hold unlatched doors in closed position.

3.4 Cleaning

- .1 Proceed in accordance with Section 01 74 11 – Cleaning.

- .2 Touch-up, repair or replace damaged products.
- .3 Clean exposed surfaces of compartments, hardware, and fittings.
- .4 On completion and verification of performance of installation, remove surplus materials, excess materials, rubbish, tools and equipment.

End of Section

PART 1 GENERAL

1.1 General

- .1 Conform to the requirements of Division 1.

1.2 Related Sections

- .1 Section 06 10 00 Rough Carpentry
- .2 Section 08 50 00 Aluminum Doors, Windows and Screens

1.3 References

- .1 ASTM International (ASTM)
 - .1 ASTM D5116-17 Standard Guide for Small-Scale Environmental Chamber Determinations of Organic Emissions from Indoor Materials/Products
 - .2 ASTM D6670-18 Standard Practice for Full-Scale Chamber Determination of Volatile Organic Emissions from Indoor Materials/Products
- .2 Underwriters Laboratories of Canada (ULC)
 - .1 ULC 109-14 Flame Tests of Flame Resistant Fabrics and Films
- .3 National Fire Protection Association (NFPA)
 - .1 NFPA 701 Standard Methods of Fire Tests for Flame Propagation of Textiles and Films
- .4 Canadian Electrical Code.

1.4 Submittals

- .1 Make submittals in accordance with Section 01 33 00 – Submittal Procedures.
- .2 Submit shop drawings. Clearly indicate, by large scale details, anchorage, assembly, materials, components, finishes, and perimeter construction conditions.
- .3 Submit duplicate 300 mm x 300 mm samples of fabrics in selected colours.
- .4 Submit manufacturer's maintenance data in the form of printed instructions for cleaning and maintaining roller shades, for inclusion in Operation and Maintenance Manuals specified in section 01 78 00 – Closeout Submittals

1.5 Quality Assurance

- .1 Work of this Section shall be by forces in the direct employ or under control of the system manufacturer, skilled, trained and experienced in work of similar scope and complexity.
- .2 Manufacturer Qualifications: Company specializing in manufacturing the Products specified in this section, with a minimum of ten years of experience.
- .3 Mock-Ups: Erect one full size mock-up of each roller shade type for review. Completed and accepted mock-up shall act as the standard to which the balance of the work will be judged.

1.6 Shipping, Handling and Storage

- .1 Refer to Section 01 61 00 – Common Product Requirements.
- .2 Test all operable components prior to shipping.

- .3 Deliver, handle and store materials in accordance with manufacturer's printed instructions.

1.7 Waste Management and Disposal

- .1 Refer to Section 01 74 19 – Construction Waste Management and Disposal.

1.8 Warranty

- .1 Warrant the work of this Section against defects of workmanship and material, for a period of two years from the date of Substantial Performance and agree to make good promptly any defects which occur or become apparent within the warranty period.
- .2 Manufacturer's Warranty: Submit manufacturer's standard 10 year product warranty executed by an authorized company official.

PART 2 PRODUCTS

Manufacturers

- .1 Roller Shade System shall be glazing frame mounted non-electrically Operated Solar Shades as manufactured by Sheerweave Products Limited.
- .2 Basis of Design:
 - .1 The Sheerweave 4000 (5%) U62
- .3 Subject to compliance with the contract documents, acceptable equivalent products of the following manufacturers may be used upon approval:
 - .1 Elite Window Fashions
 - .2 Lighting Harvesting Shading Solutions
 - .3 Mechoshade Systems Inc.
 - .4 Nysan Solar Control
 - .5 Sun Glow Window Covering Products of Canada
 - .6 SunProject Inc.

2.2 Hardware – Manually Controlled Shades

- .1 Chain Operated with infinite positioning. Left or right hand operation and banding as applicable to project conditions.
 - .1 Drive assembly:
 - .1 Must allow fingertip control and include a built-in shock absorber system to prevent chain breakage under normal operating conditions.
 - .2 Factory set for size and travel of shades.
 - .3 Capable of being field adjusted from the exterior of the shade unit without having to disassemble the hardware.
 - .4 Drive Chain: No. 10 stainless steel bead chain formed in a continuous loop. The chain shall have passed a 40kg load test. Chain may be positioned at either, or both ends of the shade without disassembly of the shade unit.
 - .1 Supply and install child safe chain retainers.
 - .5 Supply and install counter balancing mechanism designed to offset the weight of the shade and give fingertip control.
- .2 Control shades and room darkening shades independently.

- .1 Audio-Visual (office environment) interface control:
 - .1 Shade manufacturer shall provide low voltage interface ready MC2 relay system to allow shade operation control from audio-visual equipment not supplied or installed under this section.
- .2 Control shades and room darkening shades independently.

2.3 Assembly

- .1 Supply and install fully factory assembled shade units consisting of 2 shade brackets, shade tube, extruded aluminum fascia, hembar and fabric as specified.
- .2 Factory modify housings where necessary to bypass columns and other obstructions.
- .3 End Brackets: 2 piece molded ABS construction with nylon drive sprocket. Bracket colour coordinated with fascia colour.
- .4 Shade tube: Minimum 1.52 mm thick extruded aluminum with 3 equally spaced continuous stiffening fins, non-sag design, maximum deflection under full load of fabric L/700.
- .5 Fascia: One piece extruded aluminum 1.7 mm thickness complete with three continuous screw flutes. Anodized. Colour as selected by the Consultant. Extruded aluminum snap lock fascia which continuously fits on the end and center brackets as a one-piece section.
- .6 Hembar: extruded aluminum with matching plastic end finials.
- .7 Blackout Shade Features: 13 mm pile mounted in prefinished 38 x 28 mm extruded aluminum side and bottom channels finished to match window framing. Include dynamic hembar to allow for variances in windowsill level.

2.4 Shade Mounting System

- .1 Extruded aluminum bracket designed to accept preassembled shade system.
 - .1 Brackets shall be used to facilitate the alignment with shade opening.
- .2 Modular Construction: shades must be removable as a complete modular unit without any component disassembly required.

2.5 Aluminum Finish

- .1 Exposed aluminum: Baked enamel, Dark Grey
- .2 Unexposed aluminum: mill finish.

2.6 Shade Fabric

- .1 Sun control fabric: dimensionally stable shade fabric.
 - .1 Acceptable Products: 5% open area:
 - .1 sheerweave, Style 4000.
 - .2 ECO / Granite.
- .2 Blackout shade fabric: dimensionally stable blackout fabric.
 - .1 To be selected from manufacturer's full range.

- .3 Performance: fabric shall hang flat, without buckling or distortion. Edge, where trimmed, shall hang true and straight, without shifting sideways more than 3 mm in either direction due to warp distortion or weave design.
- .4 Fabric shall be certified by an independent laboratory to pass the small scale vertical burn requirements test ULC S109 and NFPA 701.

2.7 Fabrication

- .1 Finished assemblies shall be square, true to size and free from distortion, twist or other defects that could affect their strength, operation or appearance.
- .2 Factory applied finish shall be uniform, smooth and without blemishes.
- .3 The fabric shall be colour fast, retain its shape, not be affected by moisture or heat, and shall be non-flammable. Cut fabric to eliminate glare and reflection from shining surfaces while maintaining exterior view. The top of the fabric shall be retained in the recessed spline of the shade roller and the bottom of the fabric shall be retained by the hem bar.

PART 3 EXECUTION

3.1 Installation

- .1 Install shading devices in accordance with manufacturer's instructions.
- .2 Take field measurements prior to fabrication to ensure fit.
- .3 Fabric shall be premeasured and manufactured off-site.
- .4 Install square, plumb, true to line, adequately anchored, maintaining uniform clearances, accurate alignment levels and parallel with the window plane. Fabric shall not travel more than 3 mm in either direction within channels after installation.
- .5 Adjust operable parts for correct function.
- .6 Secure with non-corrosive fasteners, concealed in final assembly.
- .7 Fabric shall hang flat, without buckling or distortion. The edge, when trimmed, shall hang straight without raveling. An unguided roller shade cloth shall roll true and straight, without shifting sideways more than + 3 mm in either direction due to warp distortion, or weave design.
- .8 Black out shades shall be installed to eliminate passage of light from exterior.
- .9 Electrical wiring, hook-up, switches, motorized shades: in accordance with Division 26 requirements.
- .10 Adjust to provide for operation without binding.
- .11 Refinish damaged or defective work so that no variation in surface appearance is discernable.

3.2 Demonstration

- .1 Prior to acceptance of system, arrange for demonstration of equipment with authorized representatives of the Owner, to be performed by representative of shade manufacturer to assure proper function, operation and explanation.
- .2 Conduct comprehensive demonstration for Owner's staff on operation and care of interior window treatments.

3.3 Cleaning

- .1 Proceed in accordance with Section 01 74 11 – Cleaning.

End of Section