

**KAWARTHA PINE RIDGE DISTRICT SCHOOL BOARD
PUR24-070-ITT
Dr M.S. Hawkins Public School Classroom Upgrades**

ADDENDUM NO. 2

This addendum shall form an integral part of the bid documents for the above noted Bid and shall be read in conjunction therewith. This addendum shall, however, take precedence over all requirements as it pertains to the particular and specific items noted below.

ADDITIONAL INFORMATION

Add: Addendum No. 1, prepared by CMV Group architects, Project No. 23A117, (8 pages)

END OF ADDENDUM NO. 2



ADDENDUM

101 – 20 Camden Street
Toronto, Ontario
M5V 1V1

☎ 416.506.1600
☎ 416.506.0956

www.cmvarch.com

DATE April 12, 2024 ADDENDUM No 1
PROJECT Dr M.S. Hawkins Sr Public School Classroom Renovations PROJECT No 23A117

TO Kawartha Pine Ridge District School Board ATTENTION Steven Altpeter
1994 Fisher Drive
Peterborough, ON K9J 6X6

-
- 01 This Addendum shall be attached to the form of the Specifications and shall form an integral part of the Contract Documents. The contents of this Addendum shall be brought to the attention of all concerned.
- 02 Receipt of the Addenda shall be acknowledged in the Tender Form.
- 03 All trades shall read the Addenda.
- 04 This addendum consists of 8 pages and attachments as noted.
- Architectural drawings A200, D202, A202, D301, and A301 revised:
 - Demolition and proposed notes have been updated to accurately reflect the modifications outlined in the Pinchin report 335495.027 regarding the removal of existing caulking around the existing door frames.
 - Architectural drawing D300 revised:
 - The arrow indicating the incorrect door has been revised to point to the correct door.
 - Architectural drawing A801 revised:
 - Note four (4) has been removed from the door schedule to align with the revisions outlined in the Pinchin report 335495.027 regarding the removal of existing caulking around the door frames.

Tala Jabbary

PER CMV GROUP ARCHITECTS

DISTRIBUTION Rachel Northey (Pinchin Ltd.), Andrew Ferreira (TMP), Quan Vu (H&J)

NOTES: (APPLY TO CLASSROOM DEMO & PROPOSED DWGS.)

1. ALL FURNITURE TO BE REMOVED BY OWNER.
2. REMOVE AND DISPOSE OF EXISTING FLOOR TILES AND RESILIENT WALL BASE INCLUDING ALL ADHESIVES. PATCH AND MAKE GOOD CONCRETE SLAB AND WALLS TO RECEIVE NEW FLOORING AND NEW WALL BASE. PROVIDE SELF-LEVELLING UNDERLAYMENT AS REQUIRED. MEET OR EXCEED SUBSTRATE REQUIREMENTS FOR CONCRETE SLAB AND WALLS AND PARTITIONS AS SPECIFIED IN THE FLOORING AND WALL BASE SPECIFICATION SECTIONS. SEE PINCHIN REPORT.
- 2A. GC TO REMOVE EXISTING METAL CAP AND EMBEDDED PIPE IN ORDER TO PROVIDE FLUSH SURFACE FOR NEW FLOORING. TYPICAL OF 36 LOCATIONS. PATCH AND REPAIR CONCRETE SLAB WITH SELF LEVELLING COMPOUND. SEE SPECIFICATIONS. MAKE CONCRETE SLAB READY FOR NEW FLOORING AS PER MANUFACTURERS REQUIREMENTS. TYPICAL.
3. REMOVE & DISPOSE EXISTING WALL-MOUNTED WHITEBOARDS, CHALKBOARDS AND TACKBOARDS. PATCH AND MAKE GOOD WALLS BEHIND READY FOR PAINT. SEE PINCHIN REPORT.
4. REMOVE AND DISPOSE OF EXISTING DOOR AND HARDWARE. EXISTING FRAME TO REMAIN. SAND, REPAIR AND REPAINT. REMOVE ROOM/DOOR SIGNS. PATCH, MAKE GOOD SURROUNDING CONG BLOCK WALL OR PARTITIONS TO MATCH EXTG CONDITION, READY FOR PAINT. SEE PAINT SCHEDULE.
5. REMOVE AND DISPOSE PART OF EXTG SOFFIT AND BULKHEAD.
6. REMOVE AND DISPOSE OF EXISTING MILLWORK, SHELVING AND CABINETS. PATCH AND MAKE GOOD WALLS TO RECEIVE NEW WALL PAINT & WALL BASE.
7. EXISTING PROJECTOR & SCREEN: WALL/CEILING MOUNTED PROJECTOR AND CONTROLS TO BE REMOVED BY OWNER'S IT REPRESENTATIVE PRIOR TO SCOPE OF THIS WORK. THIS SCOPE TO PATCH AND MAKE GOOD WALLS, CEILING, SLAB AND FLOORING. SEE ELECTRICAL DRAWINGS.
8. EXTG CONG BLOCK WALL. REMOVE ABANDONED/OLD CONDUITS, ELEC. ITEMS, OLD CLOCKS, BRACKETS, SUPPORTS, RAILS, HOOKS, PINS AND ALL REMAINING EXTRA ITEMS. FIX & REPAIR CRACKS & JOINTS. FILL EXTG HOLES. REPAIR THE WALL OVER EXISTING OLD PAINT. SEE PINCHIN REPORT. EPOXY, GUE, ADHESIVE & ETC FROM WALLS. PREPARE WALL SURFACE TO ACCEPT NEW PAINT. PATCH & REPAIR ANY DAMAGES CAUSED BY DEMOLITION. MAINTAIN EXISTING FIRE RATING SEPARATION. TYPICAL.
9. EXISTING UNIT VENTILATORS TO REMAIN, AND TO BE CLEANED PRIOR TO PAINTING. EXISTING FLOORING AND WALL BASE TO BE REMOVED UNDER AND AROUND UNIT VENTILATORS AND TO DOOR THRESHOLDS. TYP. REPAINT EXTG UNIT VENTILATORS ENCLOSURE.
10. REMOVE AND DISPOSE OF EXISTING SINKS INCLUDING COUNTERTOP, MILLWORK, CABINET, PAPER TOWEL DISPENSER, HAND SOAP DISPENSERS, AND OTHER ACCESSORIES. SEE MECHANICAL DRAWINGS FOR REMOVALS/MODIFICATIONS TO PLUMBING. WHERE WALLS AND SLABS ARE DAMAGED BY THE REMOVALS, PATCH AND MAKE GOOD WITH LIKE ASSEMBLIES, MATERIALS AND FINISHES. FLOOR SLAB AND WALL PATCHES TO BE SMOOTH, LEVEL AND PLUMB. SEE PINCHIN REPORT.
11. REMOVE AND DISPOSE CLOSETS ENTIRELY INCLUDING DOORS, FRAMES SHELVES AND HARDWARE GC TO REMOVE EXTG CAULKING ON DOOR FRAME.
12. EXISTING ELECTRICAL PANEL, REPAINT OR PROVIDE NEW COVER. REFER TO ELEC. DWG.
13. REMOVE AND DISPOSE OF EXISTING PA SPEAKER PHONE, CALL SWITCH, AND BACKBOARD. SEE ELECTRICAL DRAWINGS.
14. FOR HEAT AND SMOKE DETECTORS REFER TO MECH. AND ELEC. DRAWINGS.
15. REMOVE TRIM AT WINDOW SILL AND REPLACE WITH NEW.
16. REMOVE AND DISPOSE EX. LIGHT FIXTURES, EX. MECH. VENTS, DIFFUSERS, AIR SUPPLY GRILLES AND ALL CEILING MOUNTED ITEMS. EXISTING CONDUITS OR PIPING SUSPENDED FROM CEILING SLAB AT HIGH LEVEL TO REMAIN UNLESS NOTED OTHERWISE. SEE MECH. & ELEC. DRAWINGS. SITE VERIFY QUANTITIES AND EXTENT.
17. REMOVE AND DISPOSE OF EX. CEILING TILES AND CEILING SUPPORTING SYSTEM INCLUDING TILES, GYPSUM BOARD, FURRING CHANNELS, HANGERS AND EX. LIGHT FIXTURES, MECH DIFFUSERS, VENT AND ALL CEILING MOUNTED ITEMS UNLESS NOTED OTHERWISE. SEE MECH. AND ELEC. DRAWINGS. SEE PINCHIN REPORT.
18. REMOVE AND REPLACE WOODEN WINDOW VALANCE & SILL BOARDS. SEE A800 DRAWING.
19. EXISTING WI-FI APS TO BE REMOVED BY THIS CONTRACTOR, PRIOR TO DEMOLITION, AND KEEP SAFE UNTIL END OF CONSTRUCTION AND REINSTALLED IN THE EXACT SAME ROOM TO NEW LAYOUT CENTERED IN NEW CEILING. GC ELECTRICIAN TO COORDINATE WITH ELEC CONSULTANT.
20. REMOVE EXTG WALL/TRIM AT LOCATION OF EXTG UNIT VENTILATORS. PROVIDE CLEAR SPACE FOR INSTALLATION OF NEW MILLWORK WITH NEW AIR GRILLES. CLOSE ADJACENT OPENINGS & HOLES. INSTALL 16MM DRYWALL ENCLOSURE ON 92MM ST STUD IF REQ'D.
21. EXISTING DUCTWORK AND ACCESS PANELS TO REMAIN. REFER TO MECHANICAL DRAWING.
22. EXISTING GLASS AND HOLLOW METAL FRAME TO REMAIN.
23. EXISTING RADIATOR TO REMAIN, AND TO BE CLEANED PRIOR TO PAINTING. EXISTING FLOORING AND WALL BASE TO BE REMOVED UNDER AND AROUND RADIATOR AND TO DOOR THRESHOLDS. TYP. REPAINT EXTG RADIATOR ENCLOSURE.
24. EXISTING DRYWALL TO REMAIN. REMOVE ABANDONED/OLD CONDUITS, ELEC ITEMS, OLD CLOCKS BRACKETS, SUPPORTS, RAILS HOOKS. GC TO PATCH, REPAIR ANY DAMAGES AND HOLES CAUSED BY DEMOLITION AND PAINT THE DRYWALL OVER EXISTING PAINT TO MAKE IT GOOD AS NEW. MAINTAIN EXTG. FIRE RATING THROUGHOUT THE WALL. TYPICAL. SEE PINCHIN REPORT.

25. NEW LVT FLOORING: HIGH PERFORMANCE LUXURY VINYL TILE (LVT) FLOORING, INTERFACE STUDIO SET, CLASS III PRIMED, COMMERCIAL GRADE, FINISH CERAMOR, SLIP RETARDANT, 250MM X 1000MM X 4.5MM. PROVIDE ACCENT BAND & NEW RESILIENT TRANSITION STRIP. GC TO SELF-LEVELLING UNDERLAYMENT AS REQUIRED. MEET OR EXCEED SUBSTRATE REQUIREMENTS FOR CONCRETE SLAB AS SPECIFIED IN THE FLOORING SPECIFICATION SECTION. SUB-FLOOR SHALL COMPLY TO ASTM F 710 STANDARD PRACTICE FOR PREPARING CONCRETE FLOORS TO RECEIVE RESILIENT FLOORING. LVT FLOORING SHALL BE EXTENDED BELOW BOOKSHELVES/CABINETS MILLWORK CLOSET AND EXTG RADIATORS. GC TO SUBMIT 3 SAMPLES FOR ACCENT STRIPE/BORDER AND 3 SAMPLES FOR FLOORING. GC TO PROVIDE INSTALLATION METHODS MOCK UP FOR REVIEW & APPROVAL. PROVIDE 15 YEAR STANDARD LVT WARRANTY- REFER TO A501 FOR FLOOR PATTERN , AND A801 FOR FINISH SCHEDULE AND SPECIFICATION
 26. EXISTING WINDOW FRAME TO REMAIN. PATCH, SAND REPAIR, AND PAINT ALL FRAMES REMOVE DIRT AND DEBRIS FROM THE WINDOW FRAME AND GLASSES. WASH, CLEAN, AND REMOVE OXIDATION FROM FRAME. REMOVE EXTG CAULKING, RE-CAULK AROUND FRAMES. MAKE GOOD FRAMES SO THAT GLASS AND FRAME LOOK AS NEW.
 27. NEW RUBBER BASE, 102MM X 3MM THICK RUBBER COVE BASE SEE SPECIFICATION. PROVIDE SELF-LEVELLING UNDERLAYMENT AS REQUIRED. MEET OR EXCEED SUBSTRATE REQUIREMENTS FOR WALLS AND PARTITIONS AS SPECIFIED IN THE WALL BASE SPECIFICATION SECTION.
 28. EXISTING DUCTWORK TO REMAIN. THOROUGHLY CLEAN THE SURFACES OF THE EXISTING DUCTWORK TO REMOVE ANY DUST, DIRT OR LOOSE PARTICLES. SAND AND PAINT ALL THE SURFACES. SEE MECHANICAL DRAWINGS.
 29. 1HR FIRE SEPARATION ENCLOSURE, EXTG CONG BLOCK WALL OR EXTG/NEW DW PARTITION. ENCLOSING WALLS ARE REQUIRED TO HAVE A MIN 1HR FIRE-RESISTANCE RATING. EXISTING & NEW HOLES SHALL BE PATCHED REPAIRED AND SEALED WITH MIN 1HR FRR FIRE STOPPED / CAULKING SO THAT THE INTEGRITY OF THE FIRE SEPARATIONS IS MAINTAINED THROUGHOUT. APPLY FIRESTOP BELOW THE ROOF DECK AT TOP OF EXTG CONG BLOCK WALL ALONGSIDE OF THE CORRIDOR. DETAILS TO COMPLY WITH UL-1630 STANDARDS. PROVIDE SHOPDGS, FILL EXTG & NEW OPENINGS TO MAINTAIN EXTG FIRE SEPARATION, COMPLY TO ULC RELATED DESIGN NO. AND TO SATISFY BUILDING INSPECTION.
 30. RESERVED.
 31. NEW PAINT / REPAINT INTERIOR WALLS, BULKHEADS, DOOR FRAMES, WALL FIN COVERS, UNIT VENTILATOR COVERS, OLD AND NEW METAL PROVIDE NEW PAINT FINISH ON ALL INTERIOR PAINTABLE SURFACES, MAKE ALL THE FINISHES GOOD. SEE FINISH SCHEDULE AND SPECIFICATION. PRIME AND PAINT ALL SURFACES OVER THE OLD PAINTING. SEE PINCHIN REPORT.
 32. RESERVED.
 33. PATCH, REPAIR AND PAINT EXISTING FRAME OVER THE OLD PAINT. SEE PINCHIN REPORT. SUPPLY & INSTALL NEW DOOR WITH NEW HARDWARE AND DOOR NUMBER/ROOM NAME SIGN. (CONFIRM DIMENSIONS ON SITE PRIOR TO ORDERING). SEE DOOR SCHEDULE, SIGNS DETAIL AND SPECIFICATION.
 34. SUPPLY AND INSTALL NEW DOOR AND FRAME AND HARDWARE. CONFIRM DIMENSIONS ON SITE. SEE DOOR SCHEDULE AND SPECIFICATION. GC TO PROVIDE NEW CAULKING ON DOOR FRAME.
 35. WINDOWS AND NEW BLINDS: REMOVE DIRT AND DEBRIS FROM WINDOW FRAME AND GLASSES, WASH, CLEAN, REMOVE OXIDATION FROM ALUMINUM FRAME. CHECK OPENING HARDWARE AND REPLACE IT. REMOVE EXTG CAULKING, RE-CAULK AROUND FRAMES INTERIOR SIDE ONLY. MAKE GOOD ALUMINUM WINDOWS & FRAME SO THAT GLASS AND FRAME LOOK AS NEW. SUPPLY AND INSTALL NEW BLINDS TO KPROSB STANDARDS. PROVIDE CUTSHEET & SAMPLES.
 36. EXISTING HM/SCW DOOR, FRAME AND HARDWARE TO REMAIN. EXERCISE CAUTION TO AVOID ANY DAMAGE TO DOOR AND ITS COMPONENTS. IN EVENT OF ANY DAMAGE, GC TO PROMPTLY PATCH, PAINT AND REPAIR ANY DAMAGE DONE TO THE DOOR OR ITS COMPONENTS AND RESTORE THEM TO THEIR ORIGINAL CONDITION AT THEIR OWN COST.
 37. PROVIDE NEW VENTILATION GRILLE CONTINUES AT TOP & BASE OF MILLWORK. REFER TO SPEC & MECH. DWG. SUBMIT OUTSHEET FOR APPROVAL.
 38. ARCHITECTURAL MILLWORK: PROVIDE NEW ARCHITECTURAL MILLWORK INCLUDING TEACHER CLOSETS, BOOKCASE UNITS, SHELVING UNITS, CABINETS, AND SO ON C/W 19MM ADJUSTABLE SHELVES. GC TO REVIEW EXISTING RADIATOR & PLUMBINGS CONTROLS. LOCATE CONTROL AND COORDINATE WITH MILLWORK. PROVIDE AN ACCESS PANEL IN THE MILLWORK IN ORDER TO GAIN ACCESS TO CONTROL FOR FURTHER MAINTENANCE. PNEUMATIC VALVE REMOVAL BY APS, NEW ELECTRIC CONTROLS CONNECTED TO BAS, SEE MECH. AND ELEC. DWGS. SEE A500 SERIES DRAWING. SEE SPEC, PROVIDE SHOPDVG & MOCK UP.
 39. ARCHITECTURAL MILLWORK: NEW COAT HOOKS. SEE A800 SERIES SEE SPEC, PROVIDE SHOPDVG.
 40. NEW SINK, COUNTERTOP & MILLWORK CABINETS, SEE A300 & A500 SERIES. SEE SPECIFICATIONS.
 41. NEW 1HR FRR T-BAR CEILING C/W NEW LIGHT FIXTURES, DIFFUSERS, SEE MECH & ELEC DWGS. 1HR FIRE RATED CEILING TO COMPLY WITH ULC #P210 - 610MM X 1220MM, MIN. NRC OF .70, CAC MIN. 40, FIRE GUARD; CCG RADAR HIGH NRC/CAC PANELS 22541 OR ARMSTRONG SCHOOL ZONE FINE FISURED 1811. LAY IN EXPOSED TEE SYSTEM. DX 24MM WIDE FACED T-BAR BY CCG OR SUSPENSION SYSTEM EQUIVALENT GRID BY CHICAGO METALLIC, OR ARMSTRONG WITH COMPATIBILITY CEILING TILES. GRID IS RATED. ALL TILE AND SUSPENSION SYSTEMS SHALL BE FIRE RATED TO CONFORM TO U.L.C. DETAIL P210. SOUND ABSORPTIVE PREFABRATED ACOUSTICAL UNITS SHALL COMPLY TO CAN/GGSS 92.1. PROVIDE LAYOUT SHOPDVG AND SAMPLES.
 42. NEW DW BULKHEAD & CEILING- PAINTED, INSTALLED ON SHAFTWALL ST STUD SUPPORTS. GC TO PROVIDE MINIMUM 1 HOUR FIRE SEPARATION C/W FIRESTOPS, CAULKING & SMOKE SEAL. PROVIDE P-ENG STAMPED SHOPDVG FOR STEEL STUD FRAME. TYP.
 43. RESERVED.
 44. CLEAN CEILING AREA THROUGHOUT INCLUDING STRUCTURE, DECKING, ELEC AND MECH ITEMS. REMOVE DIRT, DUST AND AIRBORNE CONTAMINANTS, REMOVE POSSIBLE MOLD AND MILDEW. PAY CLOSE ATTENTION TO ELECTRICAL CONDUITS, CONNECTIONS AND FIXTURES. REPAIR CEILING AND DECK OPENING AFTER REMOVAL OF OLD ELECTRICAL & MECHANICAL, LIGHT FIXTURES, DUCTWORK, DIFFUSERS, PLUMBING PENETRATIONS. PROVIDE FIRE STOP AT OPENINGS TO MAINTAIN 1HR FIRE SEPARATION.
- SPECIALTIES, EQUIPMENT & ACCESSORIES
45. SUPPLY AND INSTALL SCHOOL CONTROL PANEL C/W CLOCK, THERMOSTAT, LIGHT SWITCHES, PA CALL SWITCH, PA SPEAKER, DUPLEXES, FIREALARM AND PROVISION FOR SPACE SENSOR. STANDARD COLOUR CHOSEN BY ARCHITECT PROVIDE SHOPDVG. SEE ELECTRICAL DRAWINGS. CLOCKS TO BE BATTERY OPERATED, RO UND, SIMPLEX, TO FIT WITHIN THE SPACE AVAILABLE. CONTROL PANEL TO BE SUPPLIED AND INSTALLED BY ELEC CONTRACTOR.
 46. SUPPLY AND INSTALL NEW WALL-MOUNTED INTEGRATED INTERACTIVE BOARDS DA-LITE IDEA SCREEN COMBINATION PROJECTION SCREEN AND WRITABLE MARKER BOARDS AS MANUFACTURED BY DA-LITE (1800-822-3737), 1350 (H) X 2170 (W) C/W CONTROLS. INSTALL ON STEEL BRACKETS BOLTED. PROVIDE SUPPORTS PER MANUFACTURER GUIDELINE. OWNER WILL REMOVE EXISTING INTEGRATED INTERACTIVE BOARDS, GC TO SUPPLY AND INSTALL NEW. SEE SPECIFICATION. SEE ARCH FLOOR PLAN & ELECTRICAL DRAWINGS. TYPICAL.
 47. NEW WALL-MOUNTED MAGNETIC WHITE BOARD MANUFACTURED BY ARCHITECTURAL SCHOOL PRODUCTS OR EQUIVALENT PRODUCTS AS SUPPLIED BY GLOBAL SCHOOL PRODUCTS INC. PROVIDE SUPPORTS, C/W CLEAR ANODIZED ALUMINUM FRAME, MAP RAIL WITH CORK INSERT, REQ'D DIVIDER STRIP AND MARKER/CHALK TRAY. INSTALL MAP RAIL OVER MARKER BOARDS. SUBMIT SD.
 48. CHARGING STATION, PROVIDED BY OWNER, GC TO COORDINATE FOR LAYOUT OF POWER RECEPTACLES & INSTALLATION. RELOCATE EXISTING TOWERS WHERE SHOWN ON DRAWINGS. SEE ELEC. DWG.

TYPICAL NOTES: (APPLY TO ALL DEMO & PROPOSED DWGS.)

1. CONTRACTOR TO MAKE GOOD ALL FINISHES DISTURBED TO INSTALL ALL COMPONENTS UNDER THIS CONTRACT. REFER TO ARCH, STR, MECH & ELEC DRAWINGS.
2. PROVIDE TEMPORARY HOARDING & DUST SCREENS AS REQUIRED TO COMPLETE WORK. MAINTAIN FIRE EXITS WHERE REQUIRED.
3. GC TO ENSURE CONTINUITY OF VAPOUR BARRIER ON ANY HOLES OCCURRING THRU SUCH CEILING / WALL, VAPOUR BARRIERS FOR WIRES, PIPES, DUCTWORK, OR ELECTRICAL BOXES. VAPOUR BARRIER MUST BE TIGHTLY SEALED WITH TAPE, CAULKING OR OTHER SUITABLE MATERIAL. CONSULTANT TO REVIEW PRIOR TO INSTALLATION OF CEILING AND WALL BOARD.
4. FIRE STOPPING OF SERVICE PENETRATIONS - PIPING, TUBING, DUCTS, WIRING, CONDUIT, ELECTRICAL OUTLET BOXES THAT PENETRATE FIRE SEPARATIONS SHALL BE TIGHTLY FITTED AND SEALED WITH MINERAL WOOL, GYPSUM PLASTER OR PORTLAND CEMENT MATERIAL, AS PER APPROVED ULC DESIGN COMPONENTS. SUBMIT ULC RELATED DESIGN FOR CONSULTANT TO REVIEW PRIOR TO INSTALLATION AT FLOOR, CEILING OR WALL.
5. MAINTAIN CONTINUITY OF FIRE SEPARATION BEHIND ALL RECESSED ELECTRICAL PANELS, AND F.E.C.
6. REMOVE & RESTORE OR REPLACE ALL CEILINGS AFFECTED BY ACCESS TO MECH. & SERVICES. SEE & ELEC. DWGS FOR EXTENT OF WORK.
7. DISCONNECT OR RELOCATE ALL MECH. & ELEC. SERVICES LOCATED IN EXISTING CEILING, WHICH WILL BE COVERED BY NEW T-BAR OR DRYWALL CEILING.
8. PROVIDE STEEL ANGLE LINTELS OVER ALL NEW MECHANICAL DUCTS & GRILLES THAT PENETRATE EXISTING & NEW MASONRY WALLS.
9. WHERE EXISTING FLOORING FINISHES ARE REMOVED, ALLOW FOR PREPARATION OF SUBSTRATE SUITABLE FOR INSTALLATION OF NEW FINISHES AS PER MANUFACTURERS REQUIREMENTS.

GENERAL NOTES APPLY TO ALL DEMO & PROPOSED DWG's:

- A. REFER TO SPECIFICATION
- B. THERE IS A TIMETABLE FOR THIS PROJECT. CONSTRUCTION MAY NEED TO BE SCHEDULED WITH ROTATIONAL SHIFTS, NIGHT SHIFTS AND OVER TIME WORK TO AVOID DISRUPTION TO SCHOOL TIME LIMIT. DEADLINES ARE STRICTLY ENFORCED.
- C. CONTRACTORS TO CONFIRM WITH PROJECT MANAGER/SCHOOL FOR START AND END OF EACH ACTIVITY BEFORE SUBMITTING THEIR PRICING PROPOSAL.
- D. ACCURATE EXTENT OF DEMOLITION AND PATCH & REPAIR AREA TO BE SITE VERIFIED. SIZES SHOWN ON DWGS ARE ONLY GRAPHICS. CONTRACTORS TO SITE VISIT, EXAMINE CONDITIONS BEFORE PRICING.
- E. SEE SPECIFICATION AND SEPARATE REPORTS FOR SITE CONDITIONS & IDENTIFICATION INCLUDING HAZARDOUS BUILDING MATERIALS WITHIN THE PROJECT AREA. NOTES PROVIDED IN THIS SET OF DRAWINGS ARE FOR GENERAL REFERENCES ONLY. THE CONTRACTORS SHALL FULFILL THE REQUIREMENTS OF THE ONTARIO OCCUPATIONAL HEALTH AND SAFETY ACT AND OTHER REGULATIONS. CONTRACTOR SHALL READ AND FULLY UNDERSTAND ABOVE SPEC AND REPORTS PRIOR TO REMOVAL AND DISPOSAL OR DECONTAMINATION OF ALL MATERIALS.
- F. PROVIDE DUST CONTROL MEASURES, SEAL ALL EXTG DUCTWORKS AND OPENINGS AND PROVIDE TEMPORARY EXHAUST PRIOR TO DEMOLITION & CONSTRUCTION.
- G. GC MUST SUPPORT THE OWNERS EFFORTS TO PURSUE THE INCENTIVE PROGRAM. TYPICAL AVAILABLE INCENTIVE LIST IS AS FOLLOWS: LIGHTING RETROFITS, LIGHTING CONTROLS, VES, COOLING, BOILER RETROFITS, DEMAND-CONTROLLED VENTILATION (CO2 SENSORS), DOMESTIC HOT WATER, HEAT/ENERGY RECOVERY EQUIPMENT, CONDENSING MAKEUP AIR UNITS. CONTRACTORS MUST PROVIDE THE REQUIRED INFORMATION, RECEIPTS, ETC. GC TO CONFIRM THAT SPECIFIED LIGHTING QUALITIES FOR THE INCENTIVE, PROVIDE CUT-SHEETS.

- H. PAINTING & REPAIRING: PREPARE SUBSTRATES TO ACCEPT NEW PAINT, INCLUDING SANDING, CLEANING, PATCHING, AND CAULKING. REMOVE, SCRAPE OFF, SAND OLD PAINT COATINGS. FILL REPAIR CRACKS, SAND AND MAKE GOOD DAMAGED, DENT SURFACES & SCRATCHES. TEST OVER-COATABILITY / RE-COATABILITY. SEAL PRIME AND PAINT EXISTING AND NEW WALL, CEILING, DOOR & FRAME SURFACES AS INDICATED. CLEAN UP, ON WOODEN DOOR OLD STAIN COATING SHALL BE REMOVED COMPLETELY. APPLY 4 COATS OF URETHANE VARNISH OVER SEMI-TRANSPARENT STAIN ON WOOD DOOR. PAINT PREVIOUSLY PAINTED CONDUITS AND PIPING. PAINT FINISHES TO MATCH EXTG. PROVIDE MULTIPLE MOCK UP / SAMPLES FOR BOTH WALL & DOOR PAINTS.
- I. PROVIDE SIGNAGE FOR EACH DOOR AND ROOM. ALL SIGNAGE TO COMPLY WITH OWNER/SCHOOL CRITERIA & OBC. SUBMIT SIGNAGE SHOP DRAWING PRIOR TO MANUFACTURE. SEE DETAIL A801.
- J. EXTEND FLOORING INTO ENTRY DOORS. PROVIDE FLUSH METAL EMBEDDED TRANSITION STRIP LOCATED AT LINE OF ENTRY DOORS.
- K. LOCATION OF ALL MECHANICAL, PLUMBING, AND ELECTRICAL ROUGH-INS SHALL BE COORDINATED WITH MILLWORK SHOPDVG BEFORE INSTALLATION OF MECHANICAL, PLUMBING & ELECTRICAL AND FABRICATION OF MILLWORK. PROVIDE SHOPDVG FOR UTILITIES ROUGH-INS / OPENINGS LAYOUT
- L. GENERAL CONTRACTOR TO INSTALL PAPER TOWEL DISPENSER & FIRST AID KITS. CONFIRM LOCATION ON SITE WITH OWNER.
- M. SUPPLY AND INSTALL NEW FLOOR FINISH BELOW NEW MILLWORK UNITS. TYP.

ALL DRAWINGS ARE THE PROPERTY OF THE ARCHITECT AND MUST BE RETURNED ON REQUEST.
THE CONTRACTOR SHALL CHECK ALL DIMENSIONS AND REPORT DISCREPANCIES TO THE ARCHITECT.
ALL DIMENSIONS ARE GIVEN IN MILLIMETRES UNLESS OTHERWISE INDICATED.
DO NOT SCALE DRAWINGS.

REVISIONS AND DISTRIBUTION LOG		
No.	Date	Note
1	MAR. 12, 2024	ISSUED FOR TENDER
2	APR. 12, 2024	ADDENDUM #1

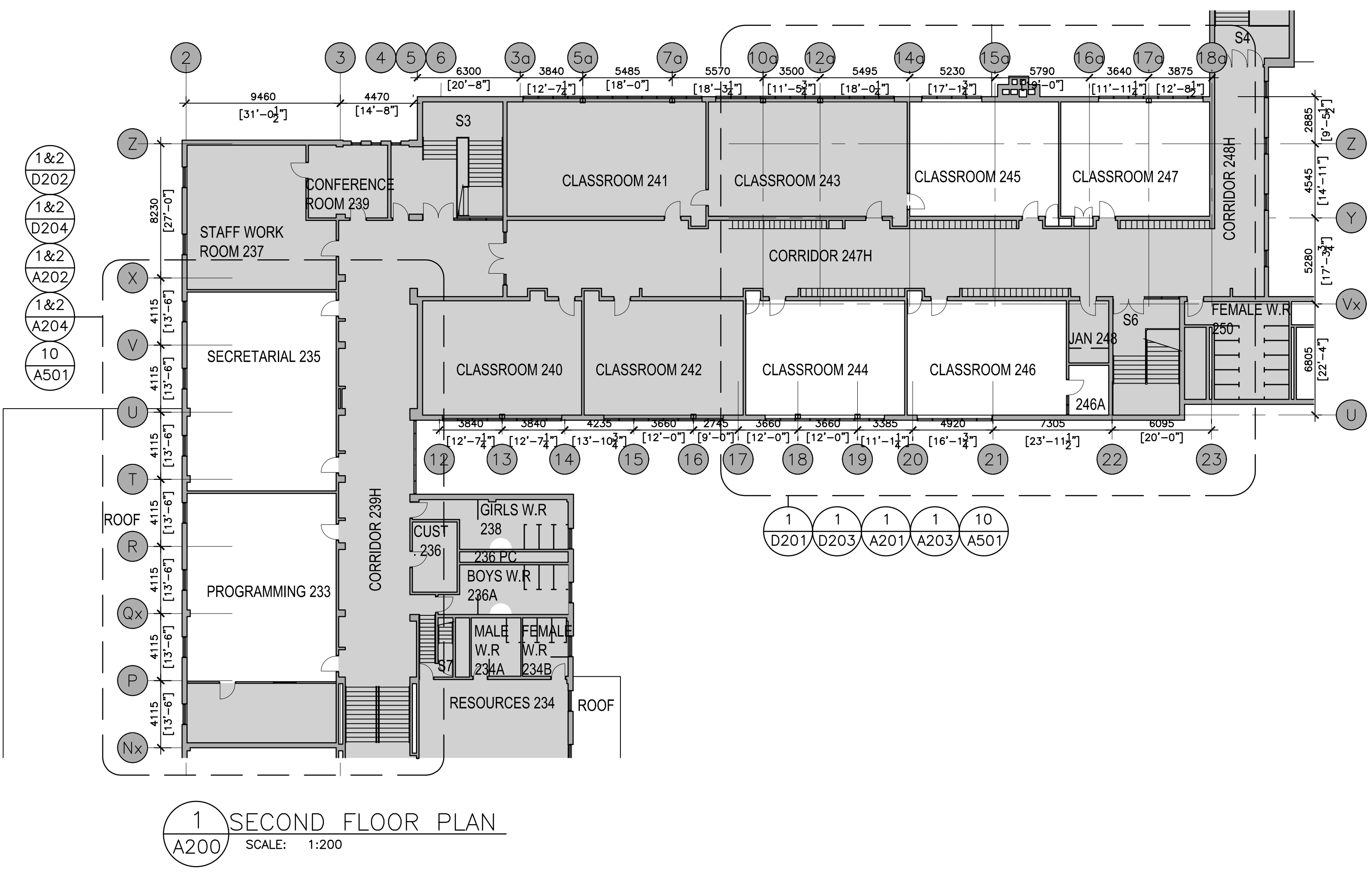
LEGEND	
	EXISTING GRID TO REMAIN. (SHOWN TONED)
	EXISTING CONSTRUCTION TO REMAIN.

NOTES APPLY TO ALL DEMOLITION & PROPOSED DRAWINGS INCLUDING MECHANICAL AND ELECTRICAL DRAWINGS. CONTRACTORS & SUBTRADE, INCLUDING MECH & ELEC TRADES SHALL READ THE WHOLE SET TOGETHER BEFORE PRICING. GC TO CONFIRM

- REFER TO A100 FOR GENERAL NOTES.
- REFER TO A100 FOR REFERENCE/TAGS
- REFER TO D201, D203, A201, A203, A500 & A800 FOR NOTES
- REFER TO A501 FOR FLOORING FINISH PATTERN

DEMOLITION OF HAZARDOUS MATERIALS TYPICAL:

G.C. TO REFER TO HAZARDOUS BUILDING MATERIALS ASSESSMENT REPORT ALONG WITH SPECIFICATIONS AND CONTRACT DOCUMENTS PREPARED BY PINCHIN REGARDING THE REMOVAL AND DEMOLITION OF HAZARDOUS MATERIALS.



1 SECOND FLOOR PLAN
A200 SCALE: 1:200

20 Camden, Suite 101
Toronto, Ontario
M5V 1V1
www.cmvarch.com
T 416.506.1600 F 416.506.0956

Project:
DR MS HAWKINS SR.PS
CLASSROOMS 233-235-244-245-246-247 RENOVATION
KAWARTHA PINE RIDGE DISTRICT SCHOOL BOARD

130 HIGHLAND DRIVE
PORT HOPE ONTARIO

Drawing Title:
PARTIAL FLOOR PLAN

Drawn By:	Checked By:	Date Checked:	Project No.
TJ	OM		23A117

Date Plotted:	Scale:
Apr 12, 2024 - 1:52pm	AS NOTED

Drawing No.:
A200

Revision No.:
2

IMAGES: \VPKCSB Logo.jpg

FILES:

FILE NAME: S:\0223 Project\23A117 KPR Dr. MS Hawkins Public School Rooms 244, 245, 246, 247 Renovation\Working Drawg\Arch\23A117_A201_Floor Plan-Friday bu.dwg

ARCH D

ALL DRAWINGS ARE THE PROPERTY OF THE ARCHITECT AND MUST BE RETURNED ON REQUEST.
 THE CONTRACTOR SHALL CHECK ALL DIMENSIONS AND REPORT DISCREPANCIES TO THE ARCHITECT.
 ALL DIMENSIONS ARE GIVEN IN MILLIMETRES UNLESS OTHERWISE INDICATED.
 DO NOT SCALE DRAWINGS.

REVISIONS AND DISTRIBUTION LOG		
No.	Date	Note
1	MAR. 12, 2024	ISSUED FOR TENDER
2	APR. 12, 2024	ADDENDUM #1

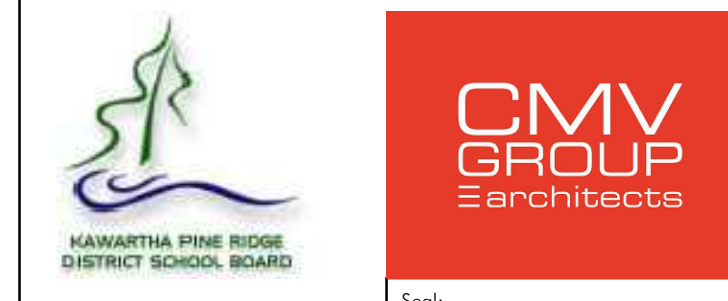
REFER TO DEMO FLOOR PLANS (D200 SERIES) AND PROPOSED FLOOR PLANS (A200 SERIES) FOR SCOPE OF DEMOLITION. (TYPICAL)

REFER TO A200 FOR PREFERENCE NOTES (TYPICAL)

NOTES APPLY TO ALL DEMOLITION & PROPOSED DRAWINGS INCLUDING MECHANICAL AND ELECTRICAL DRAWINGS. CONTRACTORS SHALL READ THE WHOLE SET TOGETHER BEFORE PRICING. GC TO COORDINATE

DEMOLITION OF HAZARDOUS MATERIALS TYPICAL:

G.C. TO REFER TO HAZARDOUS BUILDING MATERIALS ASSESSMENT REPORT ALONG WITH SPECIFICATIONS AND CONTRACT DOCUMENTS PREPARED BY PINCHIN REGARDING THE REMOVAL AND DEMOLITION OF HAZARDOUS MATERIALS.



20 Camden, Suite 101
 Toronto, Ontario
 M5V 1V1
 www.cmvarch.com
 T 416.506.1600 F 416.506.0956

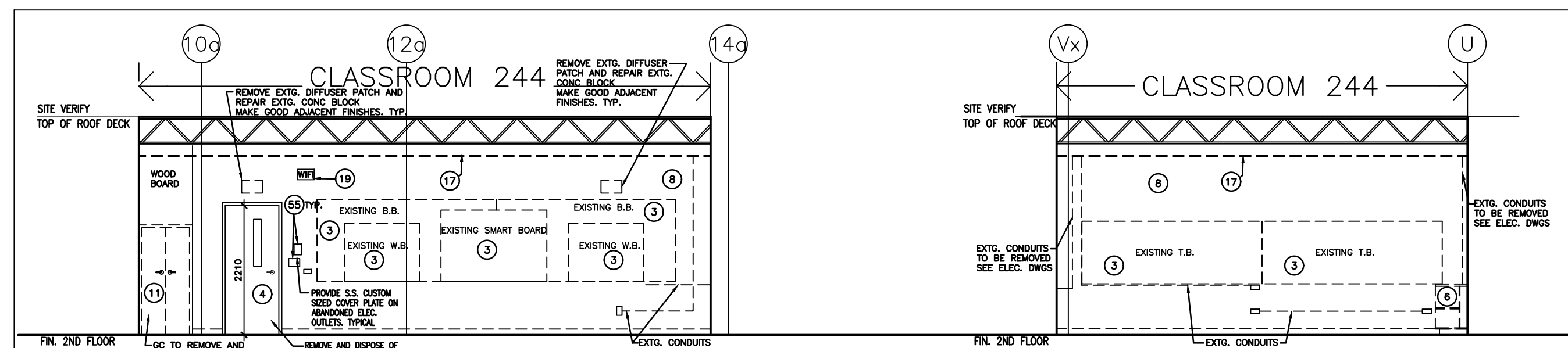
Project:
DR MS HAWKINS SR.PS
 CLASSROOMS 233-235-244-245-246-247 RENOVATION
 KAWARTHA PINE RIDGE DISTRICT SCHOOL BOARD

130 HIGHLAND DRIVE
 PORT HOPE ONTARIO

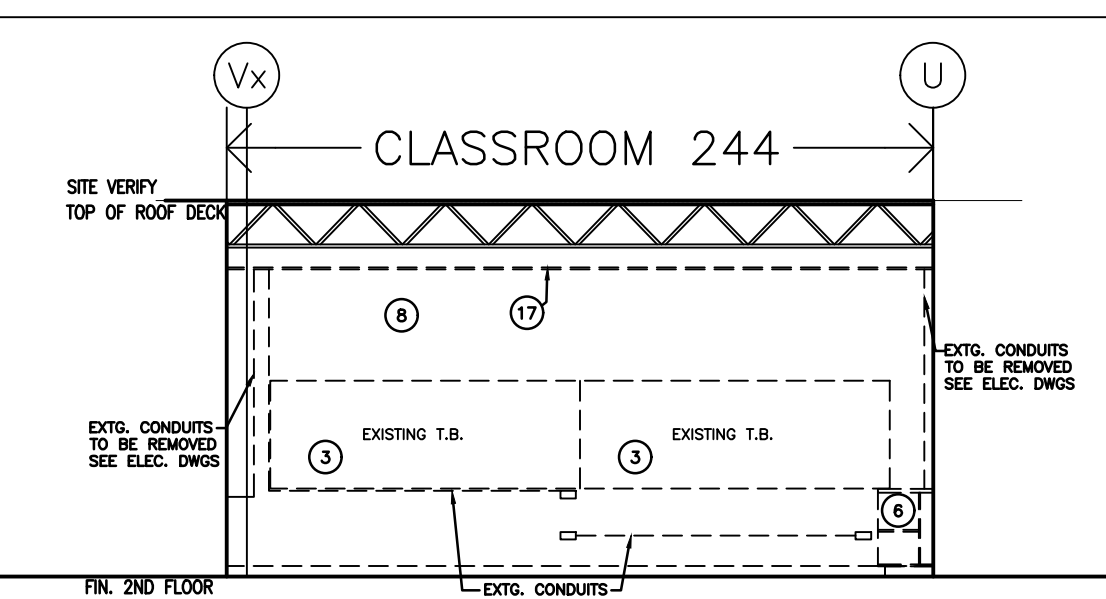
DEMOLITION INTERIOR ELEVATIONS

Drawn By: TJ	Checked By: OM	Date Checked:	Project No. 23A117
Date Plotted: Apr 12, 2024 - 1:57pm	Scale: AS NOTED	Revision No.:	

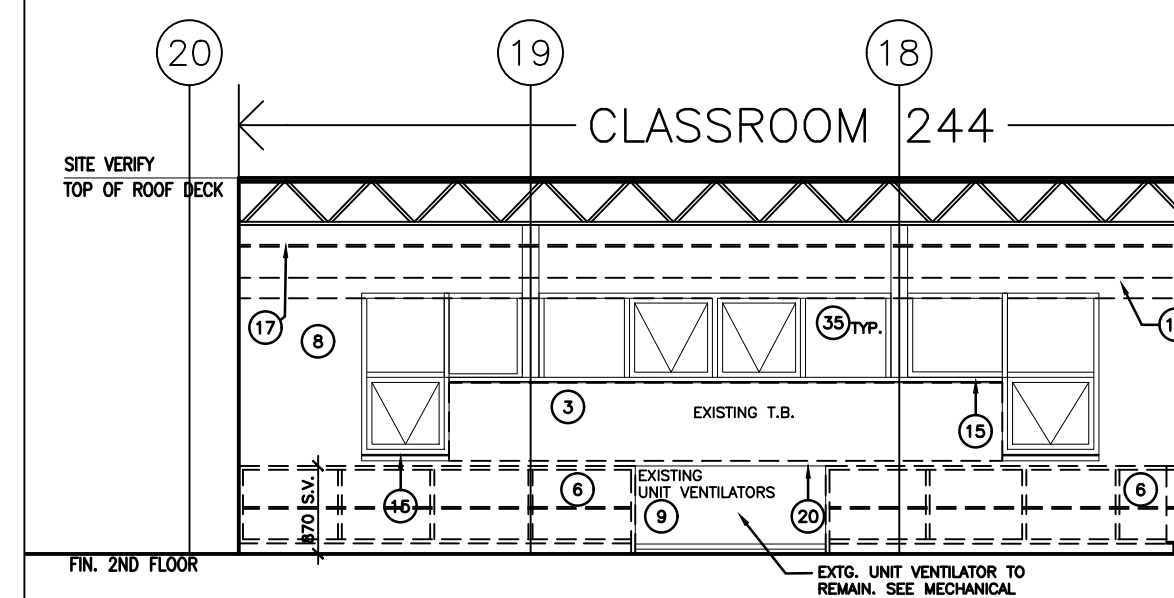
D300 2



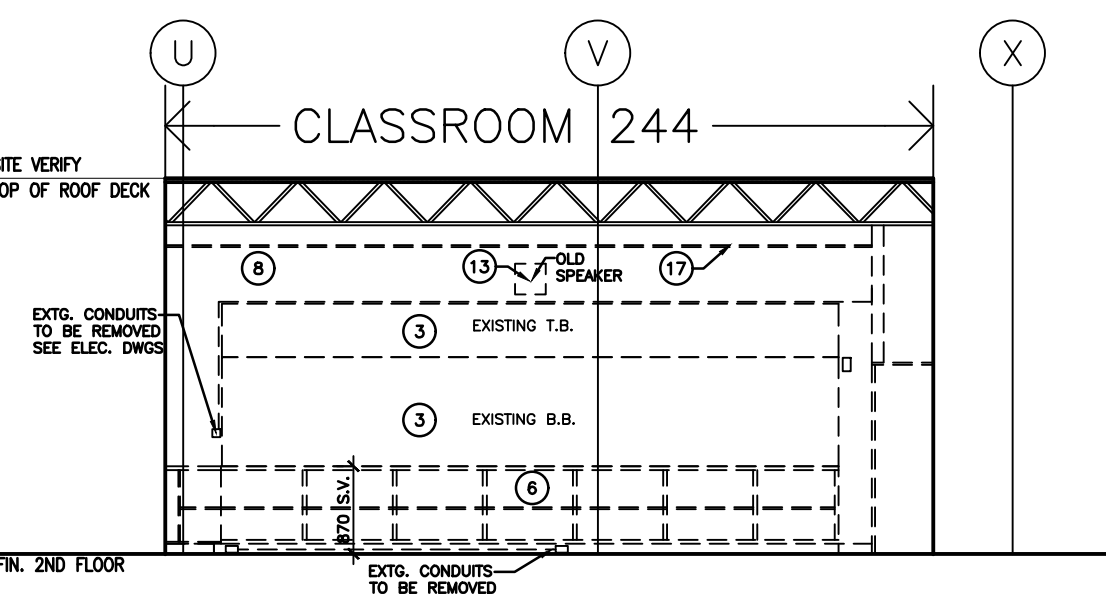
1 CLASSROOM 244- NORTH INT. ELEV.
 D300 SCALE: 1:75



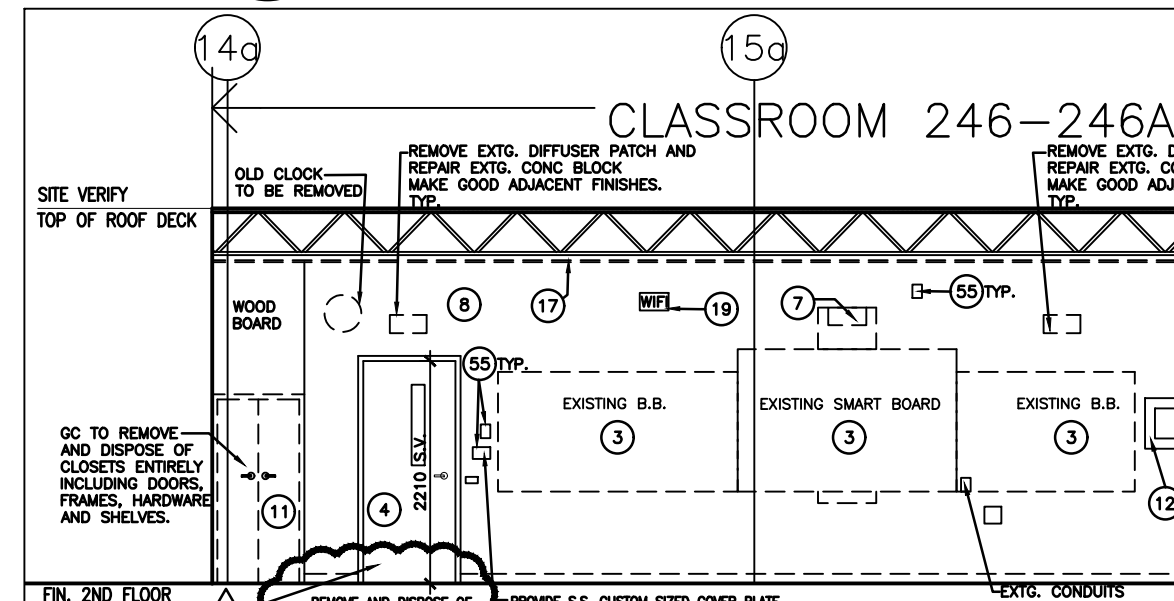
2 CLASSROOM 244- EAST INT. ELEV.
 D300 SCALE: 1:75



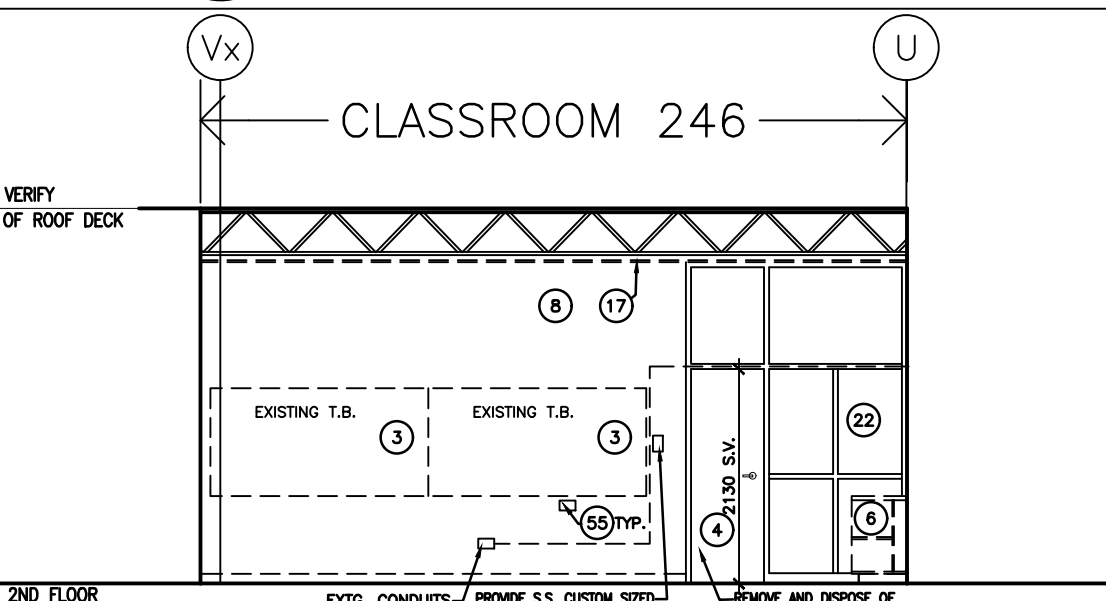
3 CLASSROOM 244- SOUTH INT. ELEV.
 D300 SCALE: 1:75



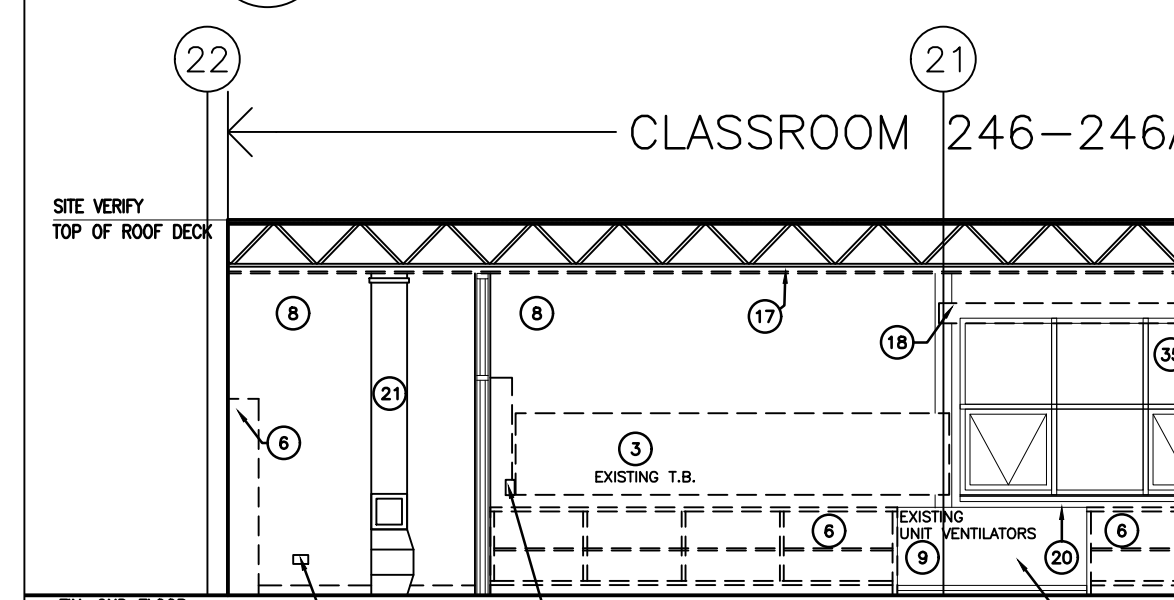
4 CLASSROOM 244- WEST INT. ELEV.
 D300 SCALE: 1:75



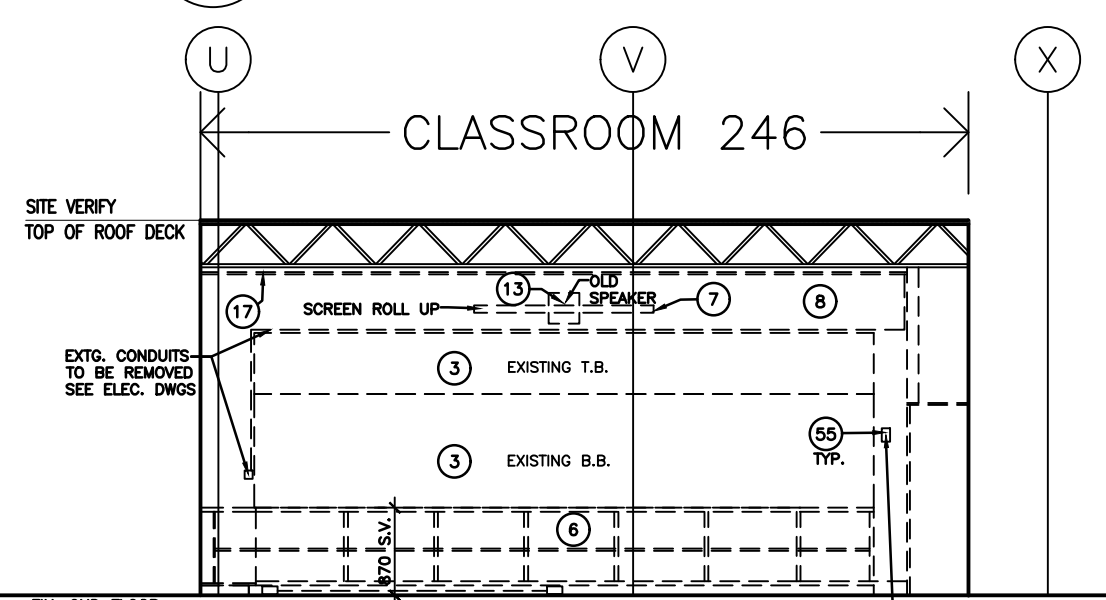
9 CLASSROOM 246- NORTH INT. ELEV.
 D300 SCALE: 1:75



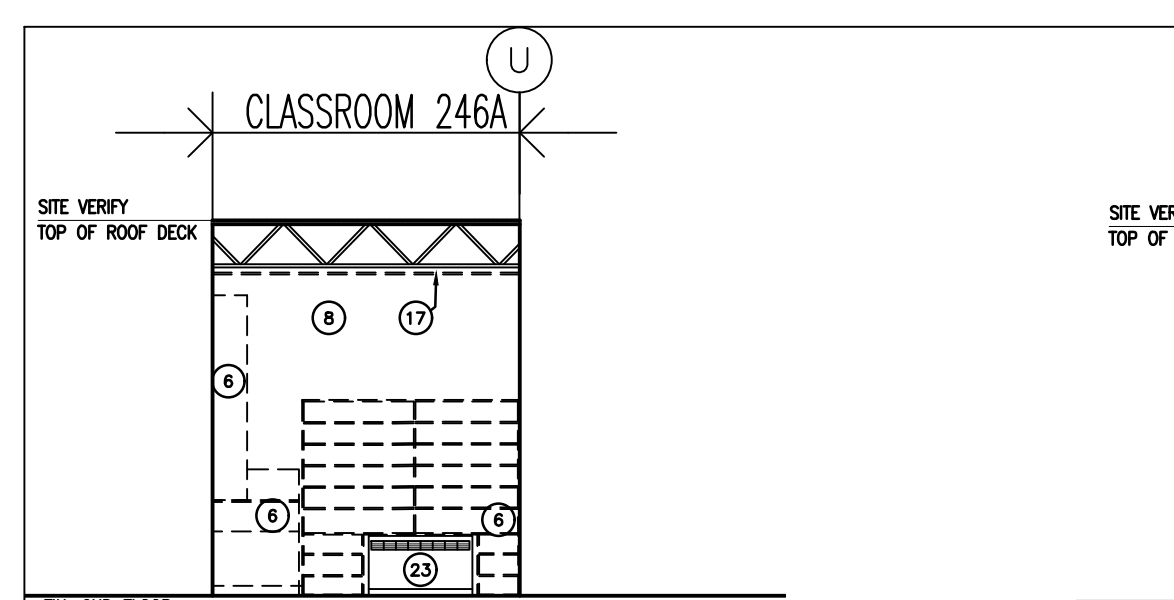
10 CLASSROOM 246- EAST INT. ELEV.
 D300 SCALE: 1:75



11 CLASSROOM 246- SOUTH INT. ELEV.
 D300 SCALE: 1:75



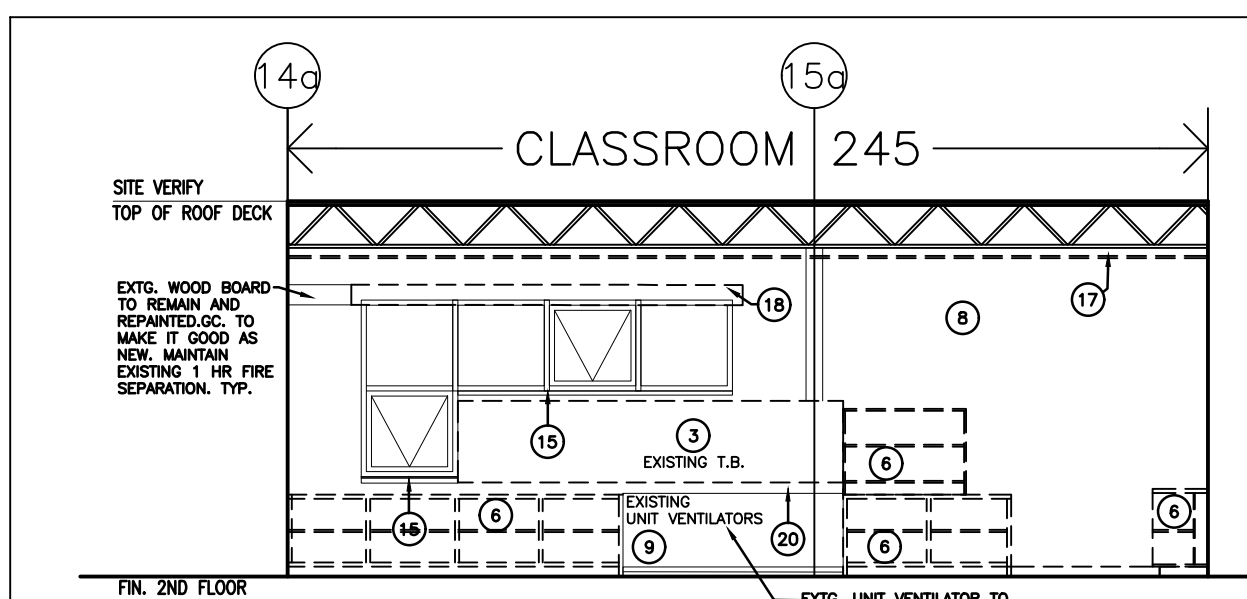
12 CLASSROOM 246- WEST INT. ELEV.
 D300 SCALE: 1:75



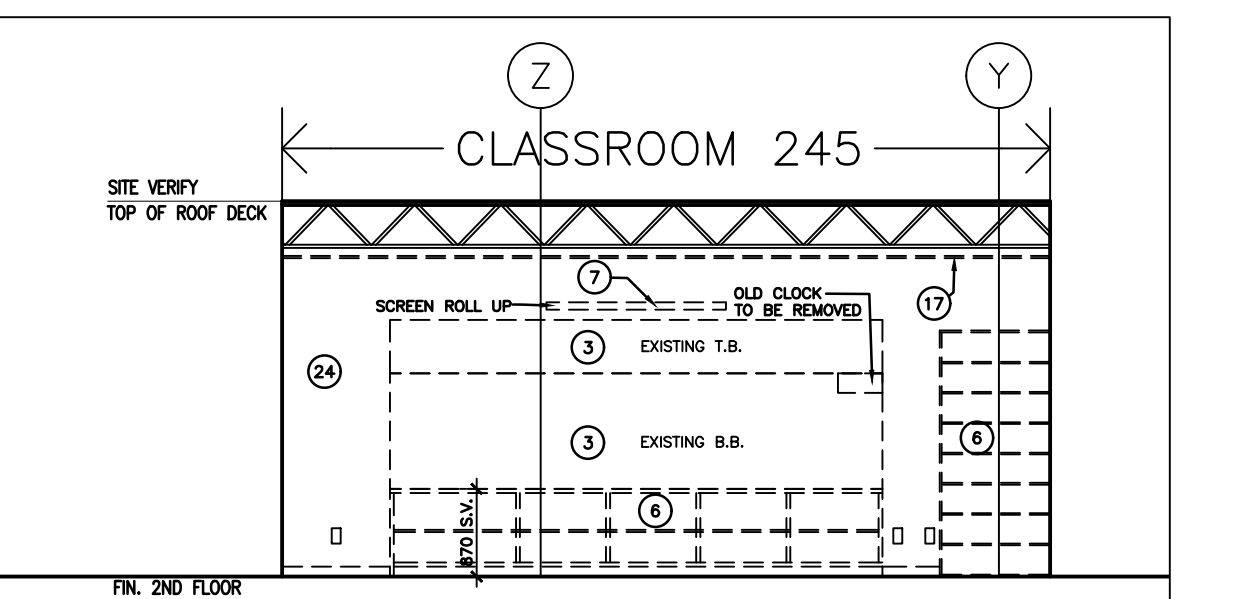
10a CLASSROOM 246A- EAST INT. ELEV.
 D300 SCALE: 1:75



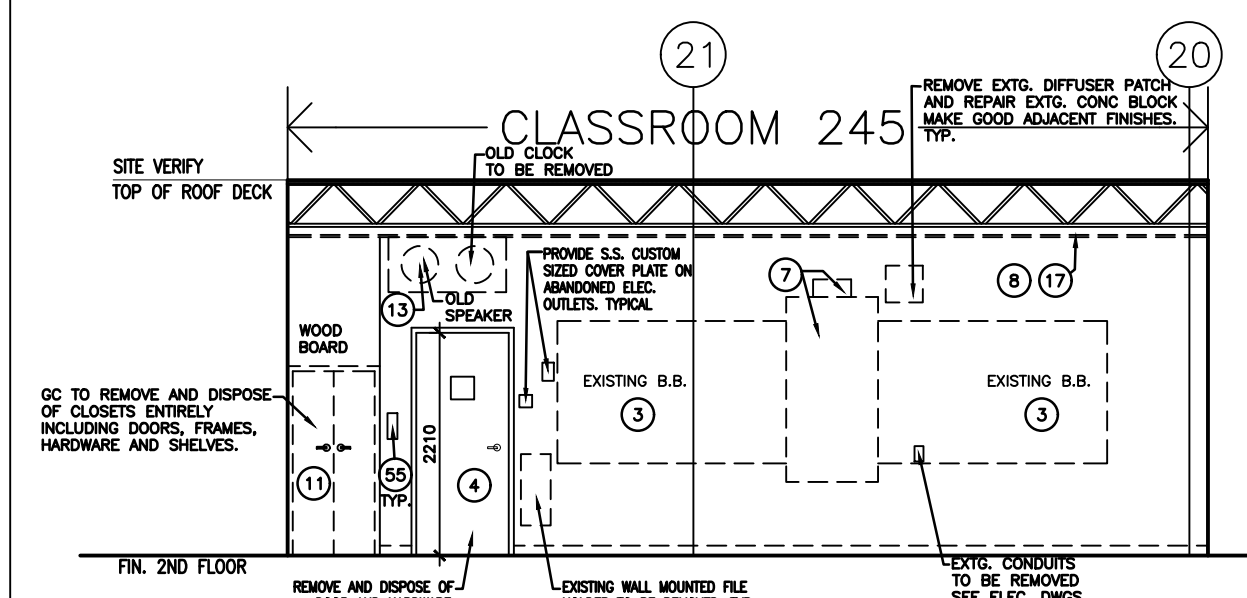
12a CLASSROOM 246A- WEST INT. ELEV.
 D300 SCALE: 1:75



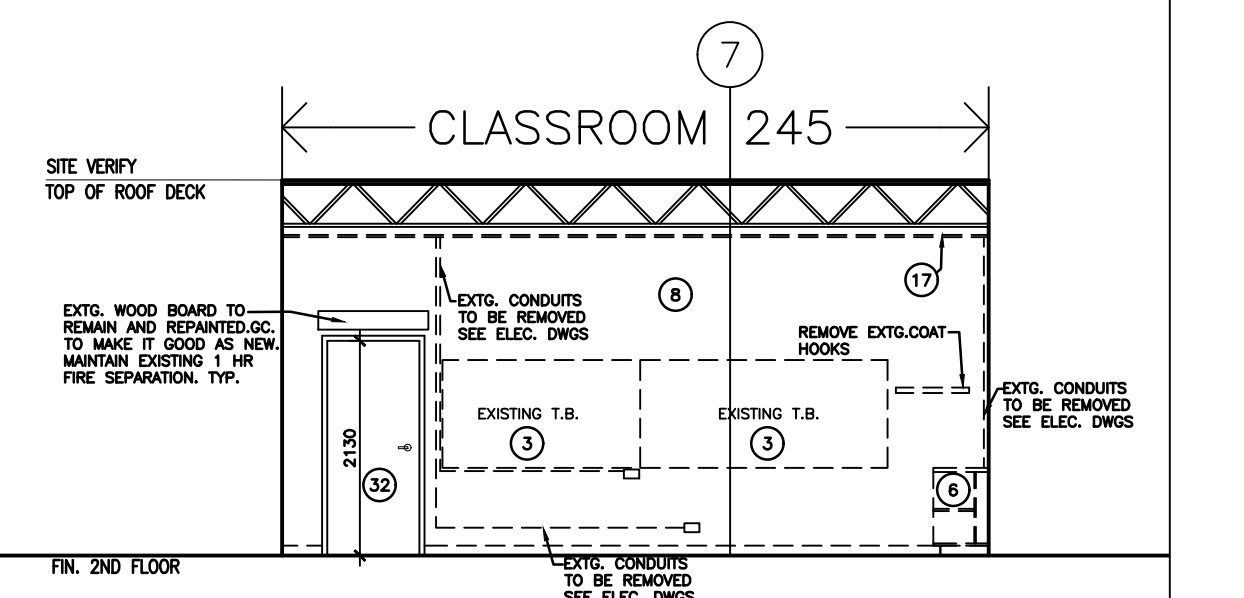
5 CLASSROOM 245- NORTH INT. ELEV.
 D300 SCALE: 1:75



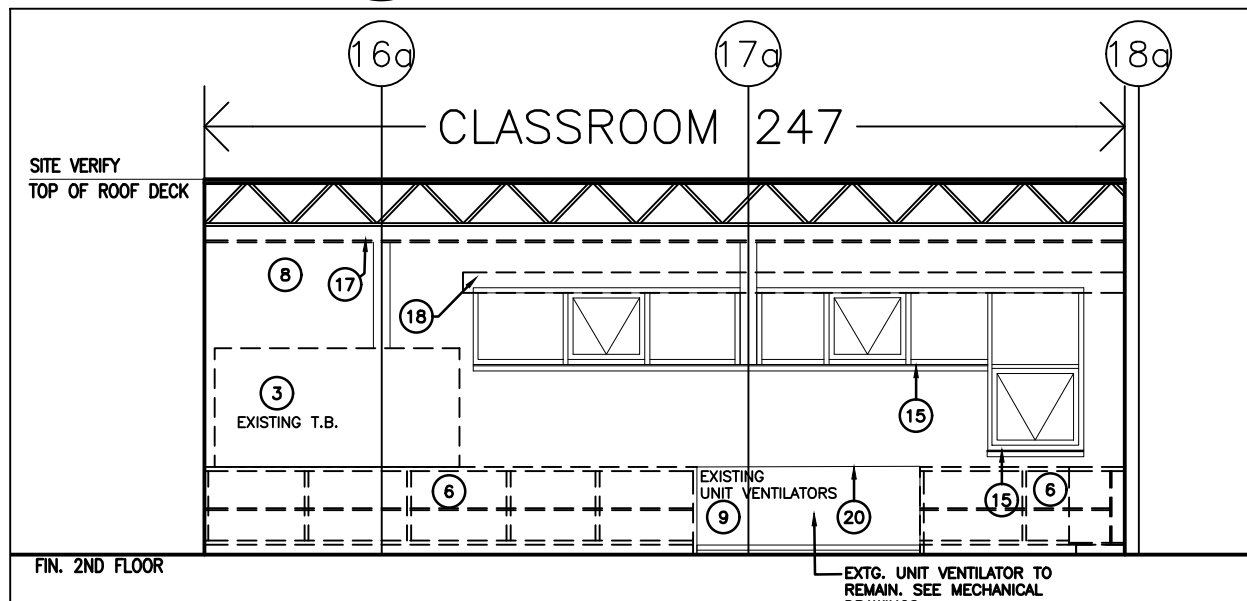
6 CLASSROOM 245- EAST INT. ELEV.
 D300 SCALE: 1:75



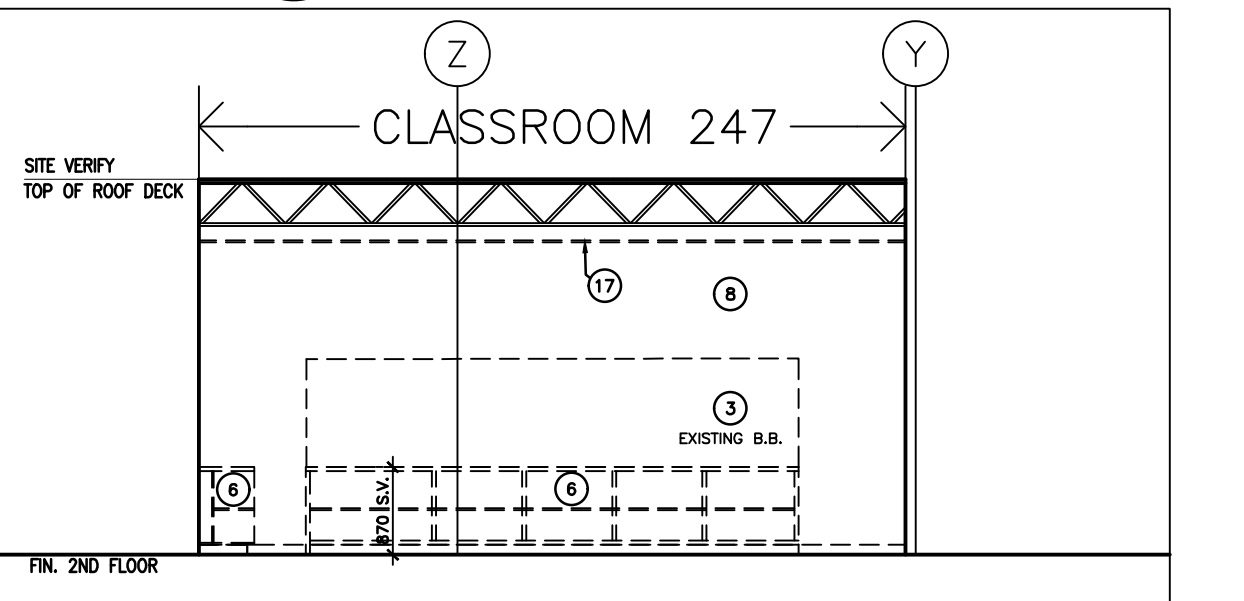
7 CLASSROOM 245- SOUTH INT. ELEV.
 D300 SCALE: 1:75



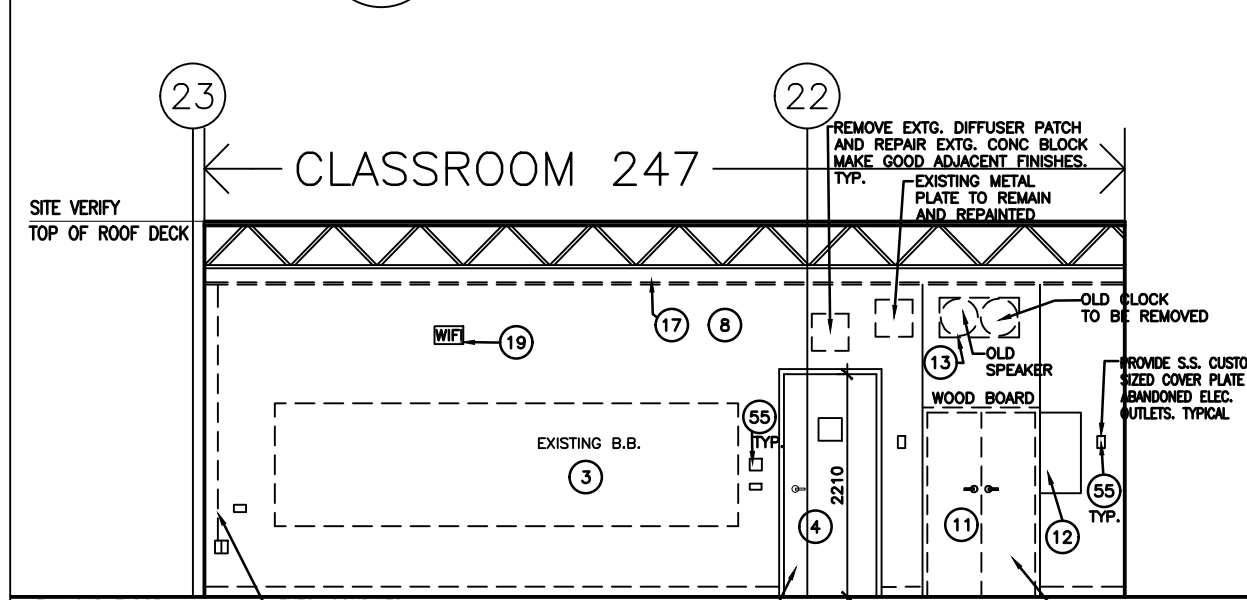
8 CLASSROOM 245- WEST INT. ELEV.
 D300 SCALE: 1:75



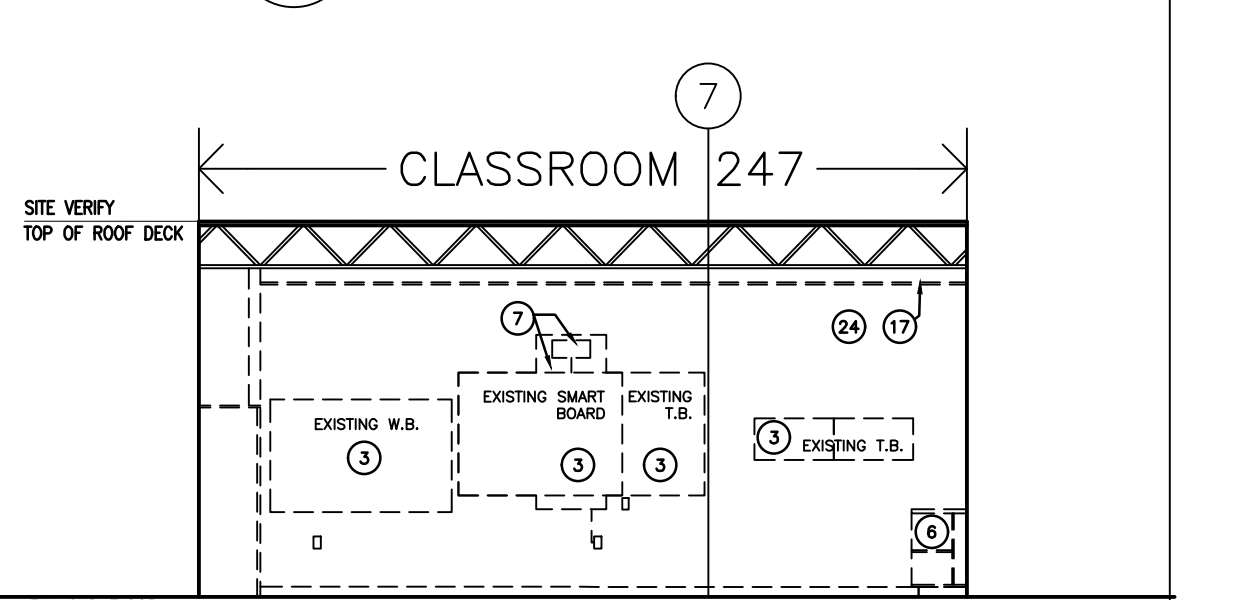
13 CLASSROOM 247- NORTH INT. ELEV.
 D300 SCALE: 1:75



14 CLASSROOM 247- EAST INT. ELEV.
 D300 SCALE: 1:75



15 CLASSROOM 247- SOUTH INT. ELEV.
 D300 SCALE: 1:75



16 CLASSROOM 247- WEST INT. ELEV.
 D300 SCALE: 1:75

FILE NAME: S:\0223\Projects\23A117\KPR Dr. MS Hawkins Public School Rooms 244, 245, 246, 247 Renovation\Working\Drawg\Arch\23A117_A301_lev.dwg
 XREFS: ...VPDCSB Logo.rvt

ALL DRAWINGS ARE THE PROPERTY OF THE ARCHITECT AND MUST BE RETURNED ON REQUEST.
 THE CONTRACTOR SHALL CHECK ALL DIMENSIONS AND REPORT DISCREPANCIES TO THE ARCHITECT.
 ALL DIMENSIONS ARE GIVEN IN MILLIMETRES UNLESS OTHERWISE INDICATED.
 DO NOT SCALE DRAWINGS.

REVISIONS AND DISTRIBUTION LOG		
No.	Date	Note
1	MAR. 12, 2024	ISSUED FOR TENDER
2	APR. 12, 2024	ADDENDUM #1

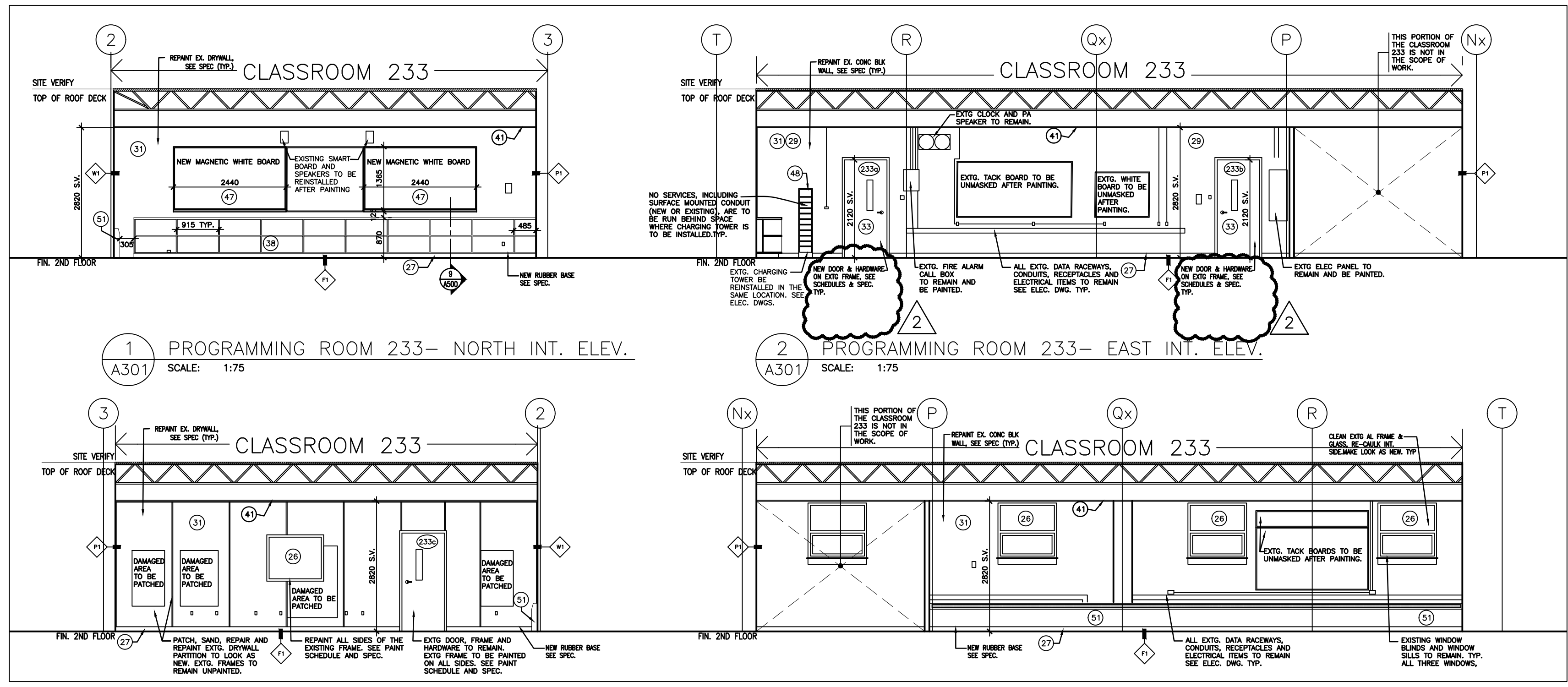
REFER TO DEMO FLOOR PLANS (D200 SERIES) AND PROPOSED FLOOR PLANS (A200 SERIES) FOR SCOPE OF DEMOLITION. (TYPICAL)

REFER TO A200 FOR PREFERENCE NOTES (TYPICAL)

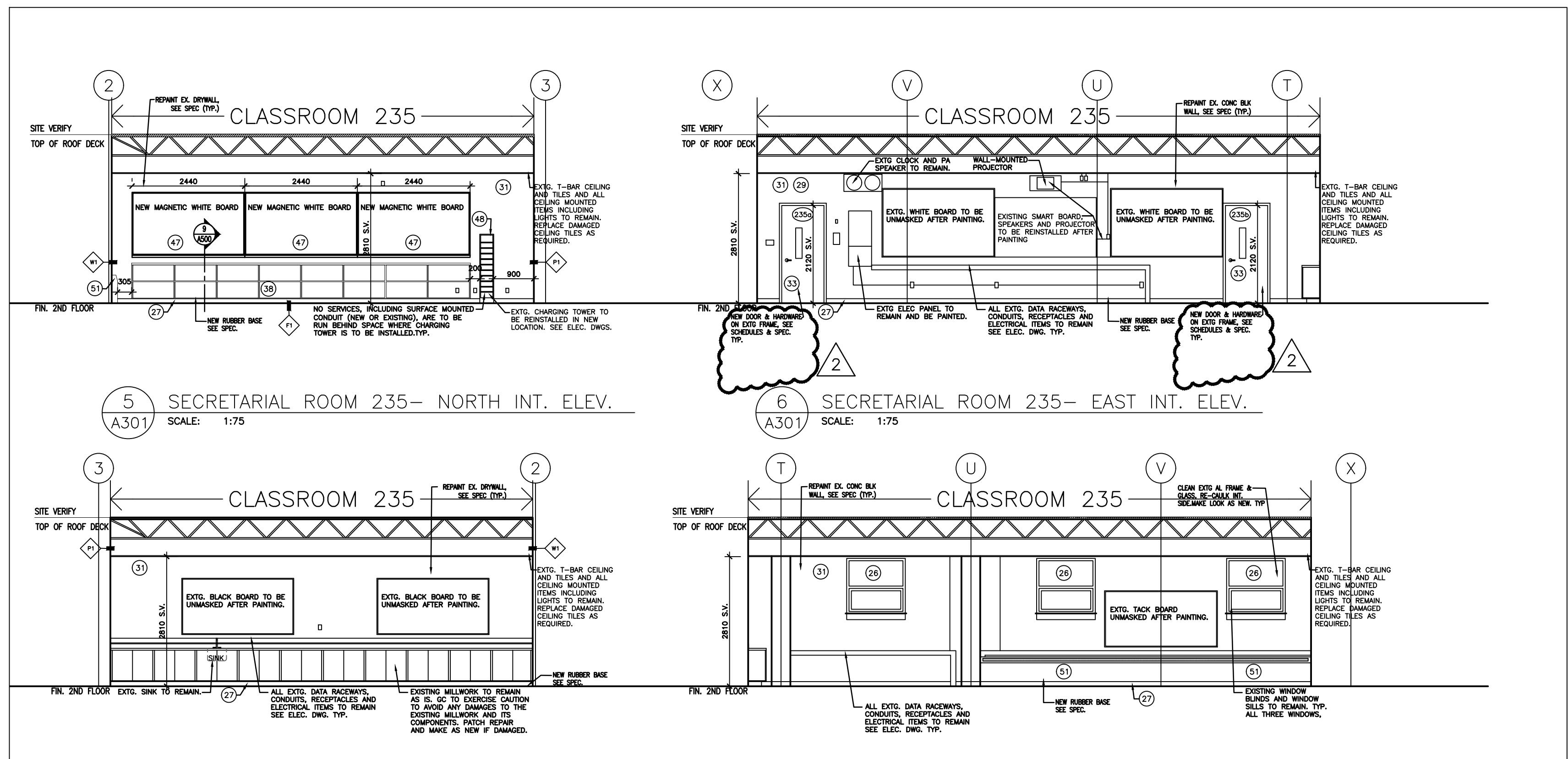
NOTES APPLY TO ALL DEMOLITION & PROPOSED DRAWINGS INCLUDING MECHANICAL AND ELECTRICAL DRAWINGS. CONTRACTORS SHALL READ THE WHOLE SET TOGETHER BEFORE PRICING. GC TO COORDINATE

DEMOLITION OF HAZARDOUS MATERIALS TYPICAL:

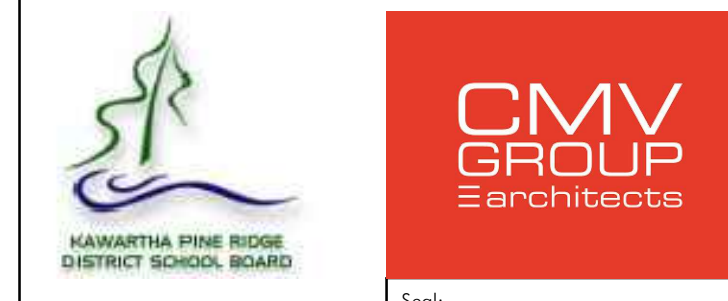
G.C. TO REFER TO HAZARDOUS BUILDING MATERIALS ASSESSMENT REPORT ALONG WITH SPECIFICATIONS AND CONTRACT DOCUMENTS PREPARED BY PINCHIN REGARDING THE REMOVAL AND DEMOLITION OF HAZARDOUS MATERIALS.



1 PROGRAMMING ROOM 233- NORTH INT. ELEV. SCALE: 1:75
 2 PROGRAMMING ROOM 233- EAST INT. ELEV. SCALE: 1:75
 3 PROGRAMMING ROOM 233- SOUTH INT. ELEV. SCALE: 1:75
 4 PROGRAMMING ROOM 233- WEST INT. ELEV. SCALE: 1:75



5 SECRETARIAL ROOM 235- NORTH INT. ELEV. SCALE: 1:75
 6 SECRETARIAL ROOM 235- EAST INT. ELEV. SCALE: 1:75
 7 SECRETARIAL ROOM 235- SOUTH INT. ELEV. SCALE: 1:75
 8 SECRETARIAL ROOM 235- WEST INT. ELEV. SCALE: 1:75



20 Camden, Suite 101
 Toronto, Ontario
 M5V 1V1
 www.cmvarch.com
 T 416.506.1600 F 416.506.0956

Project:
DR MS HAWKINS SR.PS
 CLASSROOMS 233-235-244-245-246-247 RENOVATION
 KAWARTHA PINE RIDGE DISTRICT SCHOOL BOARD

130 HIGHLAND DRIVE
 PORT HOPE ONTARIO

PROPOSED INTERIOR ELEVATIONS

Drawn By: TJ	Checked By: OM	Date Plotted: Apr 12, 2024 - 2:01 pm	Project No. 23A117
Date Plotted: Apr 12, 2024 - 2:01 pm	Scale: AS NOTED	Revision No.:	

A301 2

IMAGES: \VPRCSB Logo.jpg

XREFS:

FILE NAME: S:\0223 Project\32A117 KPR Dr. MS Hawkins Public School Booms 244, 245, 246, 247 Renovation\Working Draw\Arch\32A117_A301_Rev 8_Sec - Copy.dwg

INTERIOR FINISHES SCHEDULE

MATERIAL TYPE	ABBREVIATION	MANUFACTURER/SUPPLIER	PRODUCT NUMBER, COLOUR	SIZE (MM)	REMARKS
LVT TILE FLOORING	LVT-1 MAIN LVT-2 ACCENT	INTERFACE	LVT INTERFACE STUDIO SET A00703 PEPPER (LVT-1). PROVIDE 3 SAMPLES. ACCENT STRIP A00709 OCEAN (LVT-2). PROVIDE 3 SAMPLES.	250 X 1000	COLOUR BY ARCHITECT WITHIN THE MANUFACTURERS STANDARD RANGE.
RESILIENT RUBBER BASE	BASE-1	JOHNSONITE	"TIGHTLOCK" TRADITIONAL RUBBER BASE		COLOUR FROM MANUFACTURERS STANDARD BLACK. GC PROVIDE SAMPLES
RESILIENT TRANSITION STRIP	TRANS-1	JOHNSONITE	REDUCER STRIP FROM TERRAZZO FLOOR TO LVT FLOORING	100mm HIGH, MIN 3.0mm THICK	COLOUR TO BE SELECTED FROM FULL RANGE.
PLAM - CONTROL PANEL & COUNTERTOPS	PLAM-1	FORMICA	BLACK STONE 271-58 MATTE		CONTROL PANEL AND COUNTERTOPS IN CLASSROOMS
PLAM - DOOR	PLAM-2	FORMICA	NATURAL OAK 346-58 MATTE		
ACOUSTIC TILE CEILING	ACT	ARMSTRONG	SCHOOL ZONE FINE FISSURED 1811 - FIREGUARD SEE SPEC.	610x1220x16	PROVIDE NEW 1 HOUR RATED CEILING TILES AND GRID COMPLY WITH ULC # P-210

PAINT SCHEDULE

PAINT: TYPICAL WALL	PT-1	BENJAMIN MOORE	BM 960 DOVE WHITE - SEMI GLOSS	PAINT ALL WALL COMPONENTS INCLUDING ELECTRICAL CONDUITS, PIPE, RADIATORS, METAL CAPS ETC.
PAINT: CLASSROOM DOOR FRAMES & WINDOW FRAME IN PROGRAMMING ROOM 233 (WINDOW IN PARTITION WALL)	PT-2	BENJAMIN MOORE	BM 2126-20 RACCOON FUR - SEMI GLOSS	PAINT ALL SIDES OF DOOR AND WINDOW (ROOM 233) METAL FRAMES PT-2. PROVIDE SAMPLE AND MOCK-UP
PAINT: METAL DOORS & FRAMES BETWEEN CLASSROOMS	PT-3	BENJAMIN MOORE	BM 2126-20 RACCOON FUR - SEMI GLOSS	PAINT METAL DOORS & FRAME, BOTH SIDES PT-3. PROVIDE SAMPLE AND MOCK-UP
PAINT: UNIT VENTILATORS IN ALL CLASSROOMS	PT-4	BENJAMIN MOORE	ENAMEL COLOUR	PAINT UNIT VENTILATORS COVER ALL SIDES PT-4. PAINT TO BE ENAMEL DESIGNED FOR MECH UNITS W/ HEAT-RESISTANCE & DURABILITY
STAIN: MILLWORK, WINDOW SILLS & CORNICE	STAIN -1			STAIN AND VARNISH ALL MILLWORK, WINDOW SILLS AND WINDOW CORNICE IN ALL CLASSROOMS.

8 INT. FINISH SCHEDULE
A801 SCALE: NTS

- NOTES:
- THE EXISTING PAINT ON THE DOOR FRAMES DOES CONTAIN LEAD. REFER TO PINCH REPORT FOR PAINT REMOVAL
 - THE EXISTING PAINT ON THE CONCRETE BLOCK WALLS IS ASBESTOS CONTAINING SO ANY OPERATION THAT INVOLVED DRILLING OR CUTTING THE BLOCK WALLS BECOMES AN ASBESTOS OPERATION.
 - ALL EXISTING PAINT ON STEEL IS LEAD CONTAINING. GC TO CONSIDER SAFETY MEASURES ANY WORK INVOLVED THOSE AREAS
 - REFER TO PINCH REPORT TYPICAL
 - ALL EXISTING AND NEW WALLS & CEILING EXPOSED SURFACES TO BE PAINTED, INCLUDING BULKHEAD ABOVE DOORS AT CORRIDOR SIDE, EXCLUDING T-BAR CEILING. TYPICAL
 - BOTH SIDES OF ALL DOOR FRAMES AND HM DOORS TO BE PAINTED, EXCLUDING P_LAM DOOR FACES
 - ALL MILLWORKS EXPOSED SURFACES TO BE STAINED AND VARNISHED. GC TO PROVIDE SAMPLES AND MIN 3 MOCKUPS FOR APPROVAL

ROOM FINISH SCHEDULE

ROOM No	ROOM	FLOOR	BASE	WALLS				CEILING	REMARKS								
				NORTH	EAST	SOUTH	WEST										
233	PROGRAMMING ROOM	EXIST CONC	LVT-1 MAIN LVT-2 ACCENT	BASE-1	EX GWB	PT-1	EX CB	PT-1	EX GWB	PT-1	EX CB	PT-1	ACT	NEW LAY-IN ACOUSTIC TILES (ULC DESIGN P210)	PREFIN	±2820	SEE NOTE #1
235	SECRETARIAL ROOM	EXIST CONC	LVT-1 MAIN LVT-2 ACCENT	BASE-1	EX GWB	PT-1	EX CB	PT-1	EX GWB	PT-1	EX CB	PT-1	ACT	EXTG T-BAR CEILING AND ACTS TO REMAIN	PREFIN	±2950	REPLACE DAMAGED ACTS AS REQUIRED. PROVIDE TOTAL OF 20 NEW ACTS
244	CLASSROOM	EXIST CONC	LVT-1 MAIN LVT-2 ACCENT	BASE-1	EX CB	PT-1	EX CB	PT-1	EX CB	PT-1	EX CB	PT-1	ACT	NEW LAY-IN ACOUSTIC TILES (ULC DESIGN P210)	PREFIN	±2950	SEE NOTE #1
245	CLASSROOM	EXIST CONC	LVT-1 MAIN LVT-2 ACCENT	BASE-1	EX CB	PT-1	EX GWB	PT-1	EX CB	PT-1	EX CB	PT-1	ACT	NEW LAY-IN ACOUSTIC TILES (ULC DESIGN P210)	PREFIN	±2950	SEE NOTE #1
246	CLASSROOM	EXIST CONC	LVT-1 MAIN LVT-2 ACCENT	BASE-1	EX CB	PT-1	EX CB	PT-1	EX CB	PT-1	EX CB	PT-1	ACT	NEW LAY-IN ACOUSTIC TILES (ULC DESIGN P210)	PREFIN	±3190	SEE NOTE #1
246A	PART OF CLASSROOM 246	EXIST CONC	LVT-1	BASE-1	EX CB	PT-1	EX CB	PT-1	EX CB	PT-1	EX GWB	PT-1	ACT	NEW LAY-IN ACOUSTIC TILES (ULC DESIGN P210)	PREFIN	±3190	SEE NOTE #1
247	CLASSROOM	EXIST CONC	LVT-1 MAIN LVT-2 ACCENT	BASE-1	EX CB	PT-1	EX CB	PT-1	EX CB	PT-1	EX CB	PT-1	ACT	NEW LAY-IN ACOUSTIC TILES (ULC DESIGN P210)	PREFIN	±2950	SEE NOTE #1
248B & 247H	CORRIDORS 248H & 247H	EXIST CONC	TERRAZZO NOTE 3		EXTG TO REMAIN, GC TO REPAIR ANY DAMAGED AREA								EXTG ACT AND LATH & PLASTER				PAINT PLASTER BULKHEAD AT CORR ABOVE DOORS REPLACE (MAX NO. OF 12) BROKEN ACOUSTIC TILES AT CORR

7 ROOM FINISH SCHEDULE
A801 SCALE: NTS

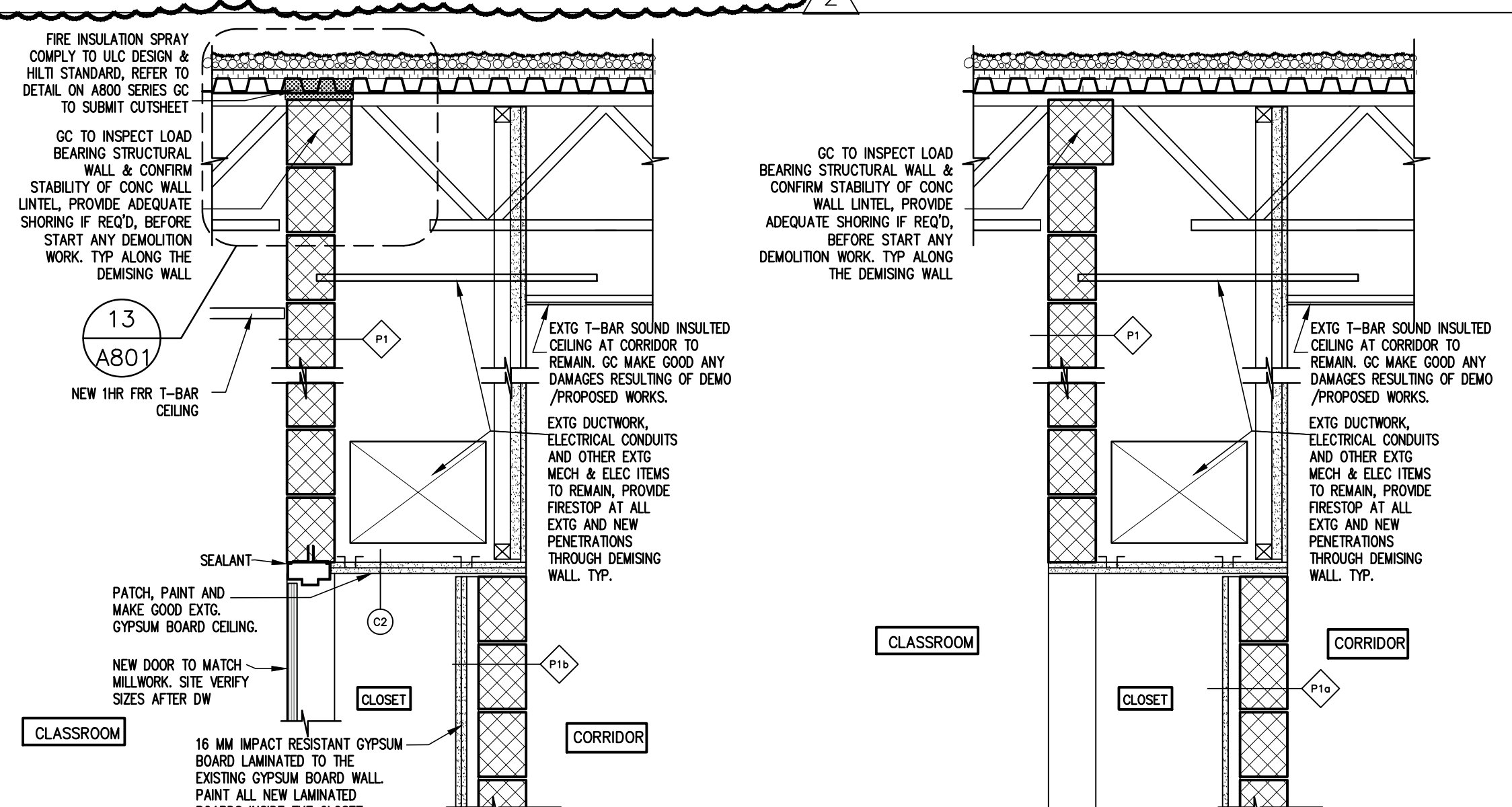
- NOTE 1: PROVIDE NEW PAINT FINISH ON ALL INTERIOR PAINTABLE SURFACES, PAINT ALL INTERIOR WALLS, FULL HEIGHT. FILL ABANDONED HOLES IN WALLS, REPAIR BROKEN CONC BLOCKS, FACE & CORNERS. MATERIAL TO BE COMPATIBLE WITH WALL MATERIAL, TO BE FLUSH WITH WALL SURFACE PRIOR TO PAINTING. PAINT PREVIOUSLY PAINTED CONDUITS AND PIPING.
- NOTE 2: REFER TO DRAWING 9&10/A501 FOR FLOOR FINISH (LVT-1&2) DETAILS AND INSTALLATION PATTERN
- EXIST CONC FLOOR, GC TO APPLY LEVELING COMPOUND. MAKE EXTG FLOOR SMOOTH & LEVEL AS PER MANUFACTURER STANDARD BEFORE LVT INSULATION
- NOTE 3: EXTG TERRAZZO FLOOR TO BE PROTECTED BY PLYWOOD BEFORE SHORING INSULATION. GC TO REPAIR ANY DAMAGES TO FLOOR. RESULT OF DEMO /PROP ACTIVITIES.

DOOR SCHEDULE

DOOR NO.	ROOM NAME	DOORS		FRAMES		HARDWARE GROUP	FR. RATING	DOOR STOP	LOCKSET	MOCKUP	REMARKS
		LEAF SIZE (MM)	TYPE	MAT.	TYPE						
233a	PROGRAMMING ROOM-233 TO CORRIDOR	NEW-915 x 2210	A	SCW	EXTG TO REMAIN	HM	SEE NOTE #3	20 MINS.	●	●	NEW DOOR & HARDWARE. EXTG FRAME TO REMAIN. CUSTOM DOOR SIZE TO FIT EXIST. OPENING. GC TO SITE VERIFY SIZES. SEE NOTE #1 FOR HINGES
233b	PROGRAMMING ROOM-233 TO CORRIDOR	NEW-915 x 2210	A	SCW	EXTG TO REMAIN	HM	SEE NOTE #3	20 MINS.	●	●	NEW DOOR & HARDWARE. EXTG FRAME TO REMAIN. CUSTOM DOOR SIZE TO FIT EXIST. OPENING. GC TO SITE VERIFY SIZES. SEE NOTE #1 FOR HINGES
233c	IN PROGRAMMING ROOM-233 PARTITION WALL	EXTG TO REMAIN	A	SCW	EXTG TO REMAIN	HM	EXTG TO REMAIN	EXTG TO REMAIN	●	●	EXISTING DOOR, FRAME AND HARDWARE TO REMAIN. GC TO EXERCISE CAUTION TO AVOID ANY DAMAGES TO THE DOOR COMPONENTS. PATCH, PAINT, AND REPAIR ANY DAMAGES AND RESTORE TO ORIGINAL CONDITION.
235a	CLASSROOM-235 TO CORRIDOR	NEW-915 x 2210	A	SCW	EXTG TO REMAIN	HM	SEE NOTE #3	20 MINS.	●	●	NEW DOOR & HARDWARE. EXTG FRAME TO REMAIN. CUSTOM DOOR SIZE TO FIT EXIST. OPENING. GC TO SITE VERIFY SIZES. SEE NOTE #1 FOR HINGES
235b	CLASSROOM-235 TO CORRIDOR	NEW-915 x 2210	A	SCW	EXTG TO REMAIN	HM	SEE NOTE #3	20 MINS.	●	●	NEW DOOR & HARDWARE. EXTG FRAME TO REMAIN. CUSTOM DOOR SIZE TO FIT EXIST. OPENING. GC TO SITE VERIFY SIZES. SEE NOTE #1 FOR HINGES
244	CLASSROOM-244 TO CORRIDOR	NEW-915 x 2210	A	SCW	EXTG TO REMAIN	HM	SEE NOTE #3	20 MINS.	●	●	NEW DOOR & HARDWARE. EXTG FRAME TO REMAIN. CUSTOM DOOR SIZE TO FIT EXIST. OPENING. GC TO SITE VERIFY SIZES. SEE NOTE #1 FOR HINGES
245a	CLASSROOM-245 TO CORRIDOR	NEW-915 x 2210	A	SCW	EXTG TO REMAIN	HM	SEE NOTE #3	20 MINS.	●	●	NEW DOOR & HARDWARE. EXTG FRAME TO REMAIN. CUSTOM DOOR SIZE TO FIT EXIST. OPENING. GC TO SITE VERIFY SIZES. SEE NOTE #1 FOR HINGES
245b	CLASSROOM-245 TO CLASSROOM 245	EXTG TO REMAIN	B	HM	EXTG TO REMAIN	HM	EXTG TO REMAIN	EXTG TO REMAIN	●	●	EXISTING DOOR, FRAME AND HARDWARE TO REMAIN. GC TO EXERCISE CAUTION TO AVOID ANY DAMAGES TO THE DOOR COMPONENTS. PATCH, PAINT, AND REPAIR ANY DAMAGES AND RESTORE TO ORIGINAL CONDITION.
246a	CLASSROOM-246 TO CORRIDOR	NEW-915 x 2210	A	SCW	EXTG TO REMAIN	HM	SEE NOTE #3	20 MINS.	●	●	NEW DOOR & HARDWARE. EXTG FRAME TO REMAIN. CUSTOM DOOR SIZE TO FIT EXIST. OPENING. GC TO SITE VERIFY SIZES. SEE NOTE #1 FOR HINGES
246b	CLASSROOM-246 TO ROOM 246A	NEW-915 x 2210	B	SCW	EXTG TO REMAIN	HM	SEE NOTE #3	20 MINS.	●	●	NEW DOOR & HARDWARE. EXTG FRAME TO REMAIN. CUSTOM DOOR SIZE TO FIT EXIST. OPENING. GC TO SITE VERIFY SIZES.
247	CLASSROOM-247 TO CORRIDOR	NEW-915 x 2210	A	SCW	EXTG TO REMAIN	HM	SEE NOTE #3	20 MINS.	●	●	NEW DOOR & HARDWARE. EXTG FRAME TO REMAIN. CUSTOM DOOR SIZE TO FIT EXIST. OPENING. GC TO SITE VERIFY SIZES. SEE NOTE #1 FOR HINGES
TC244	SINGLE DOOR TEACHER CLOSET	NEW-815 x 2210	C	SCW	1+2	HM	SEE NOTE #3		●	●	NEW DOOR & HARDWARE & FRAME. DOOR VENEER & COLOUR TO MATCH MILLWORK. CUSTOM SIZE DOOR TO FIT EXIST. OPENING. SITE VERIFY HEIGHT AFTER CEILING INSULATION. GC TO COORDINATE W TRADES SEE NOTE #2
TC245	SINGLE DOOR TEACHER CLOSET	NEW-725 x 2210	C	SCW	1+2	HM	SEE NOTE #3		●	●	NEW DOOR & HARDWARE & FRAME. DOOR VENEER & COLOUR TO MATCH MILLWORK. CUSTOM SIZE DOOR TO FIT EXIST. OPENING. SITE VERIFY HEIGHT AFTER CEILING INSULATION. GC TO COORDINATE W TRADES SEE NOTE #2
TC246	SINGLE DOOR TEACHER CLOSET	NEW-815 x 2210	C	SCW	1+2	HM	SEE NOTE #3		●	●	NEW DOOR & HARDWARE & FRAME. DOOR VENEER & COLOUR TO MATCH MILLWORK. CUSTOM SIZE DOOR TO FIT EXIST. OPENING. SITE VERIFY HEIGHT AFTER CEILING INSULATION. GC TO COORDINATE W TRADES SEE NOTE #2
TC247	DOUBLE DOOR TEACHER CLOSET	NEW-2X559 x 2210	D	SCW	1+2	HM	SEE NOTE #3		●	●	NEW DOOR & HARDWARE & FRAME. DOOR VENEER & COLOUR TO MATCH MILLWORK. CUSTOM SIZE DOOR TO FIT EXIST. OPENING. SITE VERIFY HEIGHT AFTER CEILING INSULATION. GC TO COORDINATE W TRADES SEE NOTE #2

6 DOOR SCHEDULE
A801 SCALE: NTS

- NOTE 1: NEW CLASSROOM DOORS TO HAVE SWING CLEAR HINGES INSTALLED TO PROVIDE WIDER ENTRANCE WIDTH.
- NOTE 2: DOOR, FRAME AND HARDWARE BY DOOR SUPPLIER. LOCK KEYS FOR CLOSETS SHALL BE SAME AS CLASSROOM DOORS.
- NOTE 3: SEE SPECIFICATION FOR HARDWARE, SCHEDULE AND GROUPS.



4 PROP WALL SEC @ CLOSET 245
A801 SCALE: 1:15

3 DEMO. WALL SEC @ CLOSET 245
A801 SCALE: 1:15

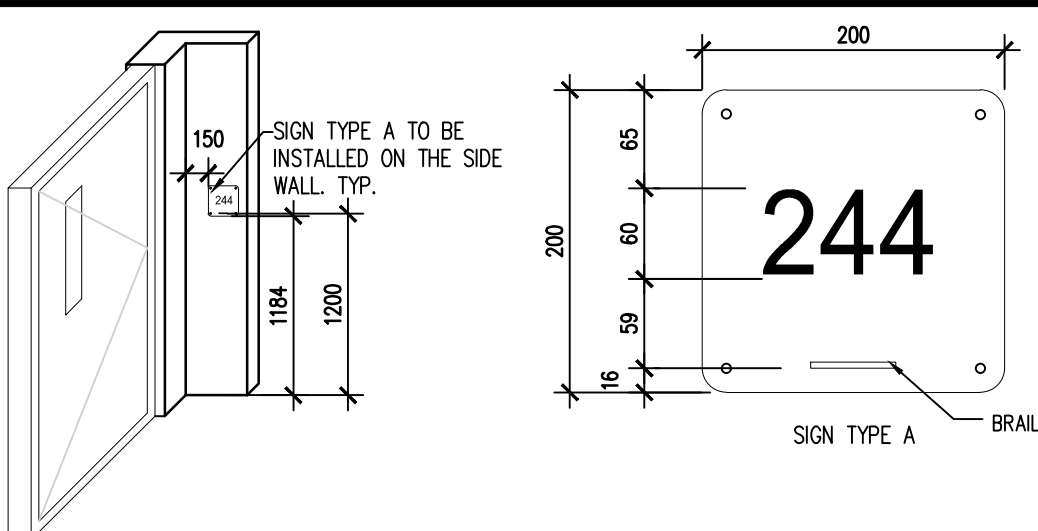
2 PROP WALL SEC @ CLOSET
A801 SCALE: 1:15

1 WALL SEC @ CLOSET- DEMO
A801 SCALE: 1:15

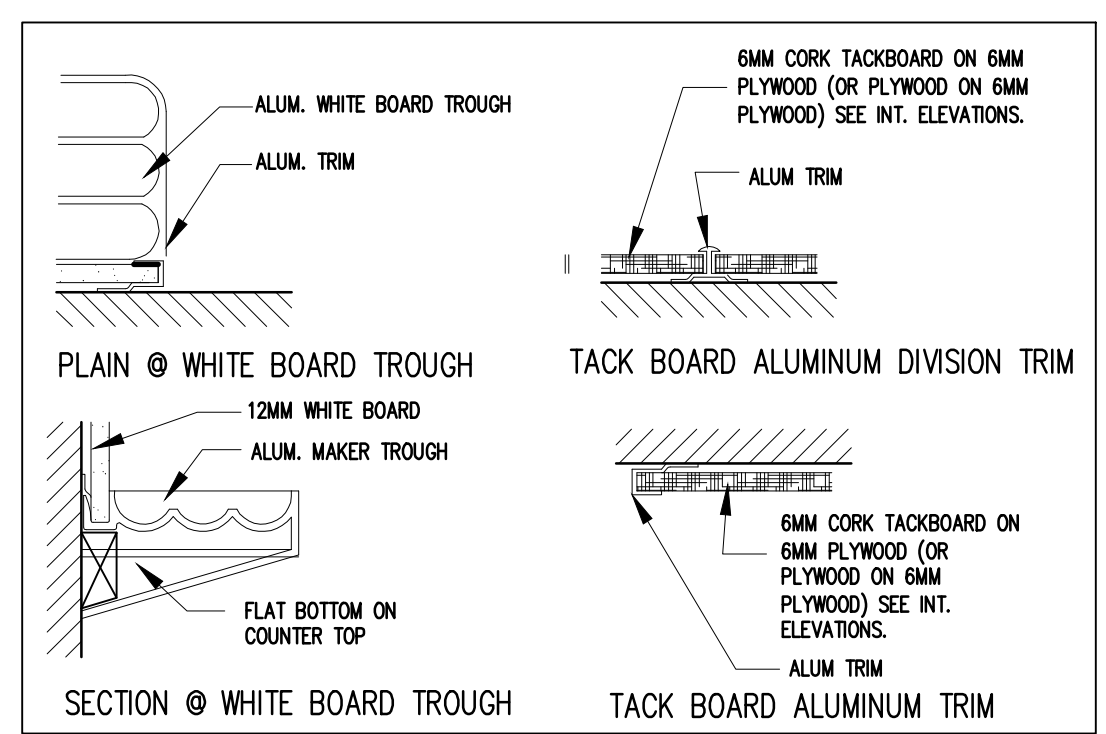
SIGNAGE SCHEDULE

ROOM NO.	ROOM USE	SIGN TYPE A	BRILLE
233	PROGRAMMING ROOM	2 @ 233	X
235	SECRETARIAL ROOM	2 @ 235	X
244	CLASSROOM	244	X
245	CLASSROOM	245	X
246	CLASSROOM	246	X
247	CLASSROOM	247	X

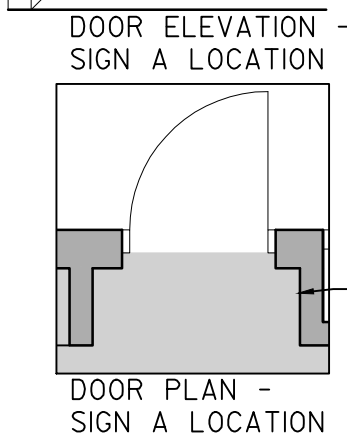
- SIGNAGE SPECIFICATIONS:
- SIGNAGE AS PER SIGN SCHEDULE
 - SIGNS SHALL HAVE GRADE 2 BRILLE
 - ALL SYMBOLS, LETTERS AND NUMBERS SHALL BE RAISED TACTILE
 - FONT - HELVETICA MEDIUM
 - MATERIAL - MIN 6mm ACRYLIC WITH MINIMUM 0.8mm THICK APPLIED VINYL LETTERS AND BRILLE BEADS
 - FINISH: WHITE LETTERS ON BLACK BACKGROUND
 - 60mm RADIUS CORNERS AT SIGN TYPE A
 - INSTALLATION - ROBERTSON STAINLESS STEEL SCREWS COUNTERSINK.



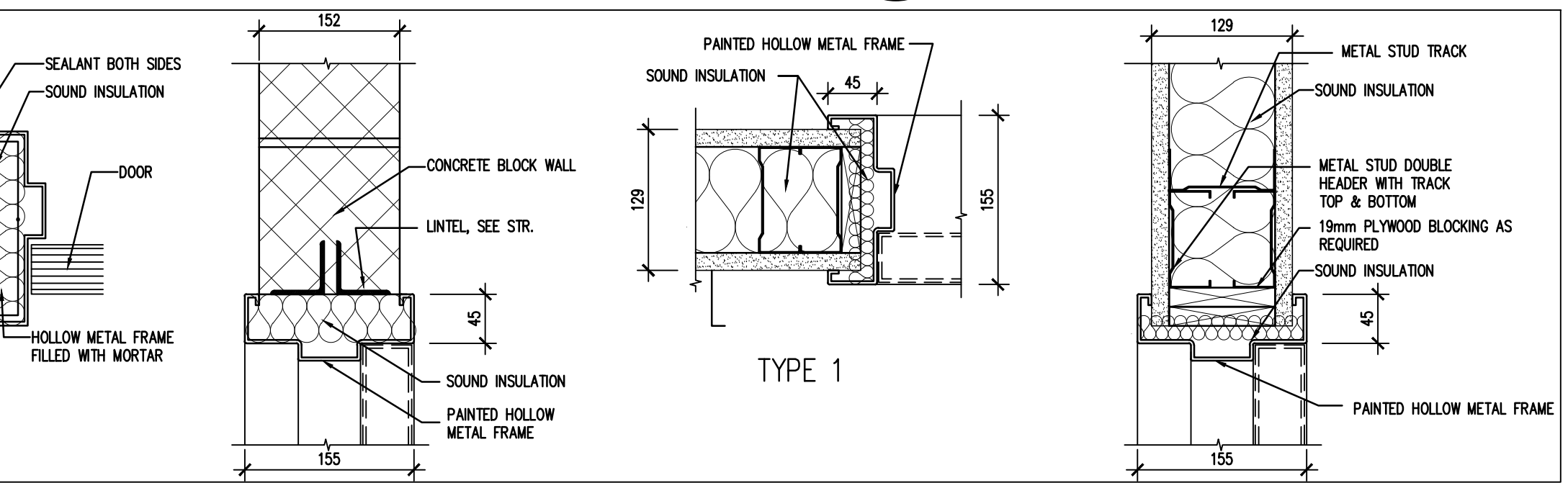
9 CLASSROOM DOOR SIGN
A801 SCALE: NTS



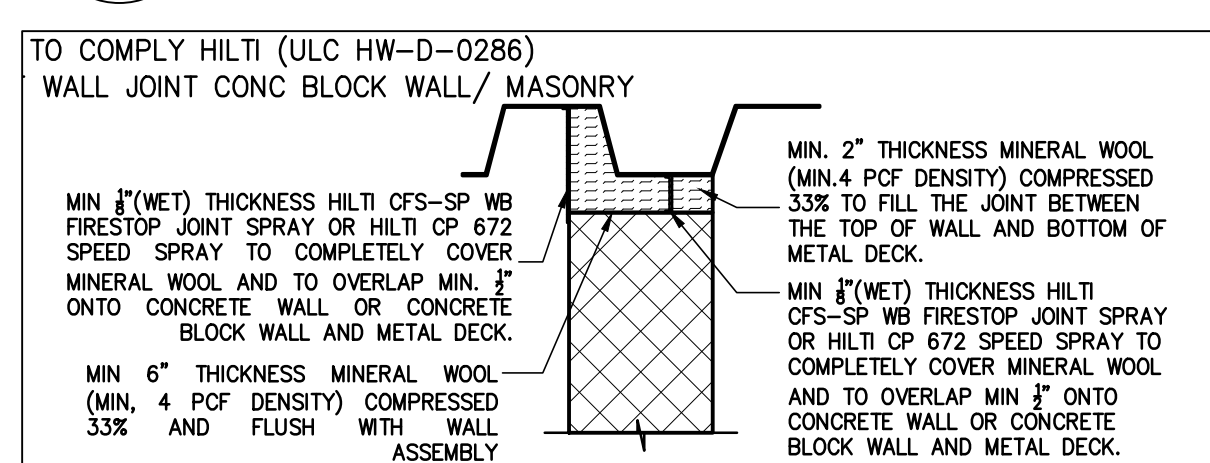
10 WHITE BOARD/TACKBOARD DETAIL
A801 SCALE: 1:5



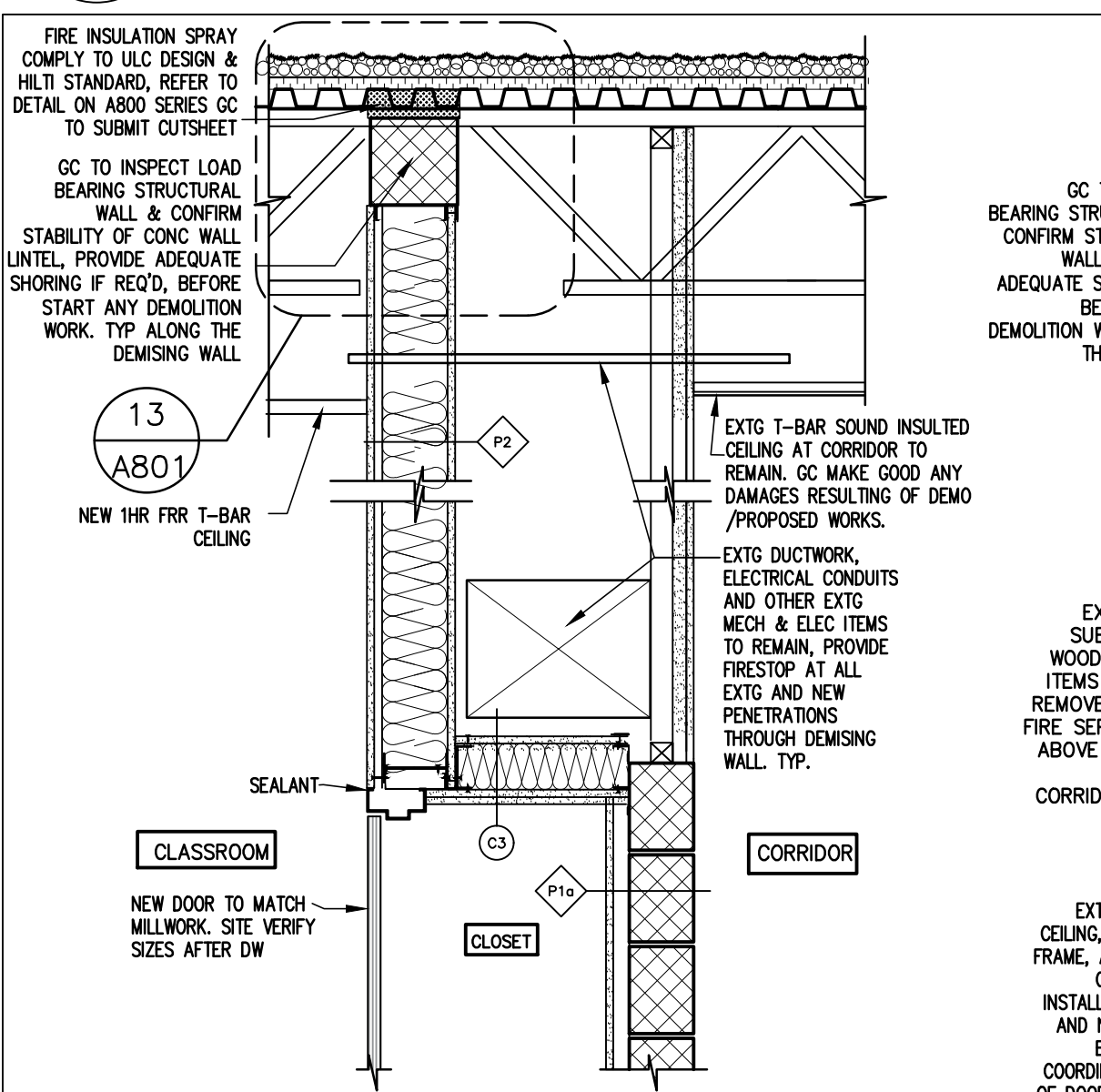
11 FRAME TYPE HEAD & JAMB DETAIL
A801 SCALE: 1:5



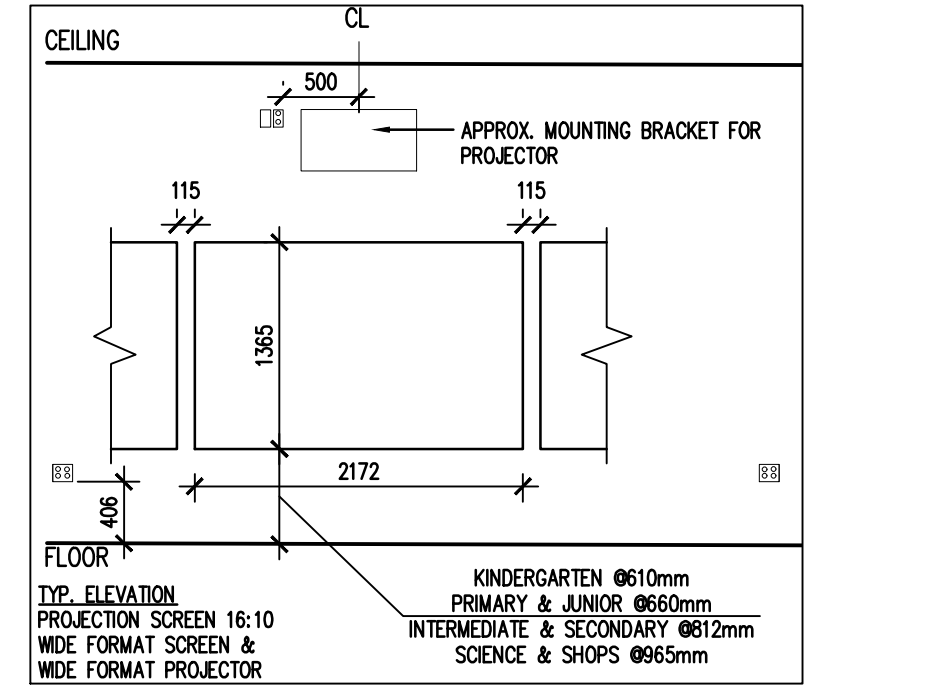
12 DOOR TYPE
A801 SCALE: 1:50



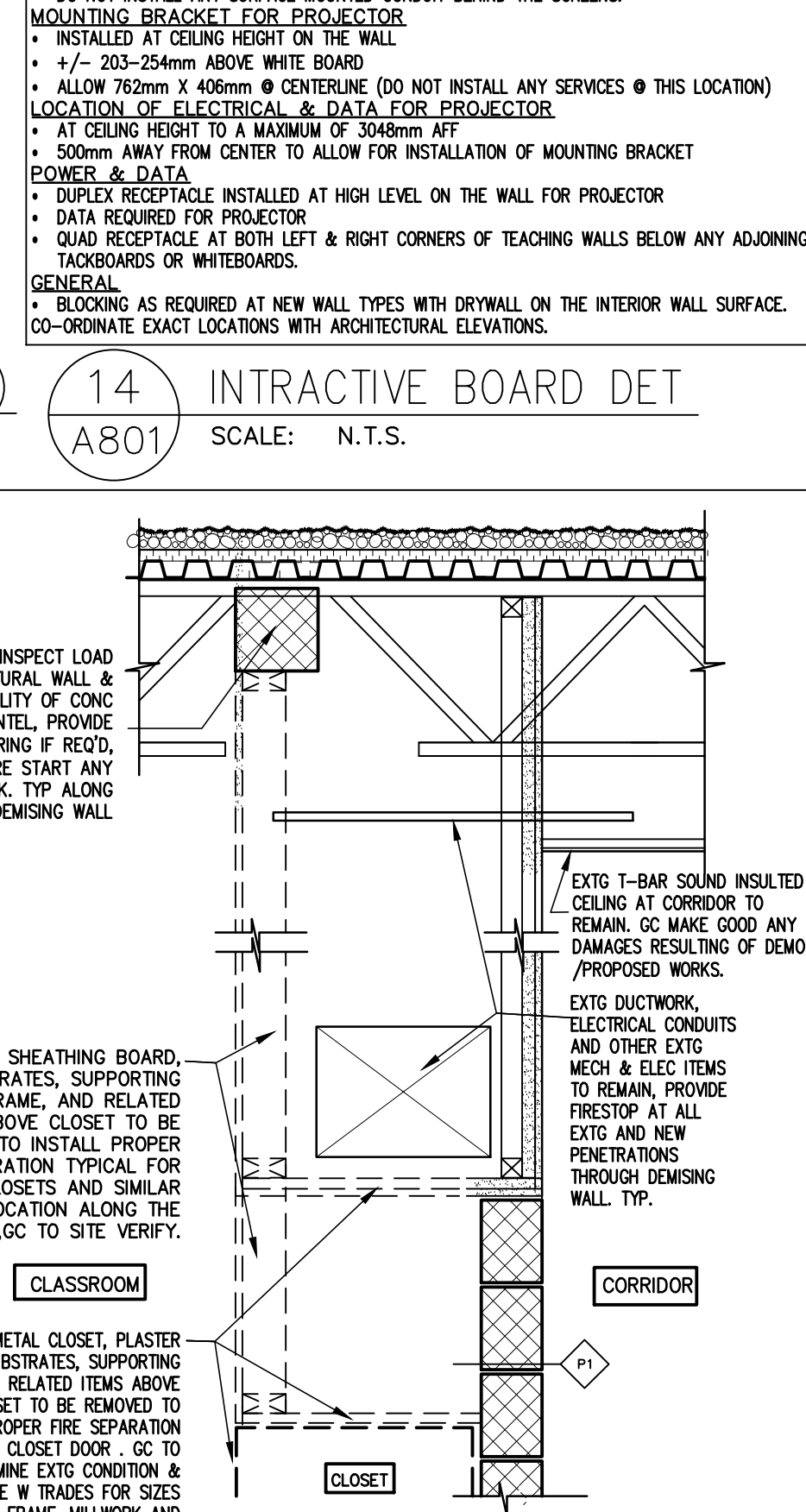
13 1-HR RATED WALL TOP JOINT (HWD 0286e)
A801 SCALE: 1:50



13 1-HR RATED WALL TOP JOINT (HWD 0286e)
A801 SCALE: 1:50



14 INTERACTIVE BOARD DET
A801 SCALE: N.T.S.



14 INTERACTIVE BOARD DET
A801 SCALE: N.T.S.

ALL DRAWINGS ARE THE PROPERTY OF THE ARCHITECT AND MUST BE RETURNED ON REQUEST.

THE CONTRACTOR SHALL CHECK ALL DIMENSIONS AND REPORT DISCREPANCIES TO THE ARCHITECT.

ALL DIMENSIONS ARE GIVEN IN MILLIMETRES UNLESS OTHERWISE INDICATED. DO NOT SCALE DRAWINGS.

REVISIONS AND DISTRIBUTION LOG		
No.	Date	Note
1	MAR. 12, 2024	ISSUED FOR TENDER
2	APR. 12, 2024	ADDENDUM #1

DEMOLITION OF HAZARDOUS MATERIALS TYPICAL:

G.C. TO REFER TO HAZARDOUS BUILDING MATERIALS ASSESSMENT REPORT ALONG WITH SPECIFICATIONS AND CONTRACT DOCUMENTS PREPARED BY PINCH REGARDING THE REMOVAL AND DEMOLITION OF HAZARDOUS MATERIALS.

CMV GROUP Architects

20 Camden Street, Suite 101
Toronto, Ontario
M5V 1V1
www.cmvarch.com

T 416.506.1600 F 416.506.0566

Project: **DR M.S. HAWKINS SR.PS**

CLASSROOMS 233-235-244-245-246-247 RENOVATION
KAWARTHA PINE RIDGE DISTRICT SCHOOL BOARD

130 HIGHLAND DRIVE
PORT HOPE ONTARIO

Drawing Title: **DETAILS & SCHEDULES**

Drawn By: TJ	Checked By: OM	Date Checked:	Project No: 23A117
Date Plotted: Apr 12, 2024 - 2:02pm	Scale: AS NOTED	Revision No.:	

A801