

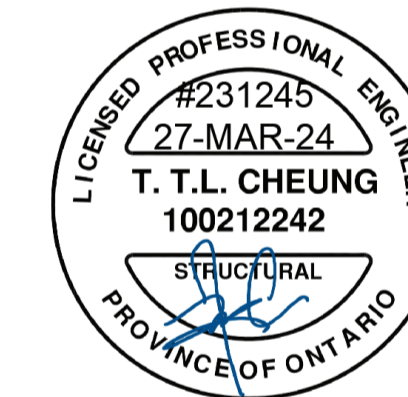
KEY PLAN



PROJECT TYPE : VERTI-BLOCK RETAINING WALL
 PROJECT NAME : GUELPH GENERAL HOSPITAL - RETAINING WALL
 JOB NO. & ADDRESS : 2023-VC -228 -GUELPH GENERAL HOSPITAL -STAMPED_REV.01

NOTES

1. ALL DIMENSION ARE IN MM
2. ALL ELEVATIONS & STATIONS ARE IN M UNLESS OTHERWISE NOTED
3. READ THESE DRAWINGS IN CONJUNCTION WITH ALL OTHER CONTRACT DOCUMENTS.
4. CONTRACTOR TO VERIFY EXISTING CONDITION ON SITE PRIOR TO INSTALLATION FOR EXACT FIT. NOTIFY CONSULTANT / ENGINEER REGARDING ANY DISCREPANCIES.
5. DON'T SCALE DRAWINGS



A-D Engineering Group Ltd.
 Consulting Engineers
 45 Eric T Smith Way - Unit 6, Aurora, Ontario, L4G 3Z8
 905-898-3514 Free 1-855-998-3514 Fax 905-898-1998
 Email: info@adengineering.ca www.adengineering.ca



of TORONTO
 56 QUEEN ST N, Bolton, Ontario, L7E 5B8
 Phone: 905.857.8572
 Fax: 905.857.0865
 www.verticreteto.com

DRAWING INDEX			
SHEET	DRAWING DESCRIPTION	Rev.	DATE
COV	COVER SHEET		2024-03-26
A-01	LEGEND & ABBREVIATIONS	1	2024-03-26
A-02	SITE PLAN	1	2024-03-26
C-01~03	WALL PLAN, PROFILE & BLOCKS ARRANGEMENT	1	2024-03-26
XS-01~06	WALL CROSS-SECTION	1	2024-03-26

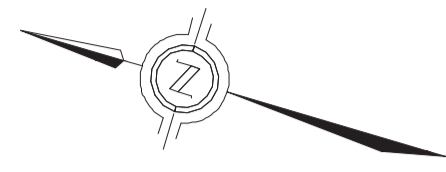
1- GENERAL SYMBOLS

2- GRADING LEGEND

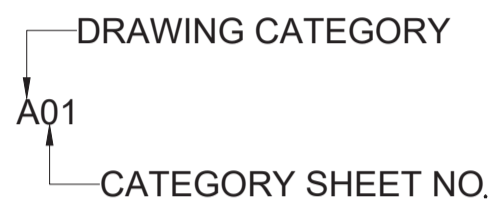
4- BLOCKS SYMBOLS & ABBREVIATIONS

6- STANDARD DETAILS

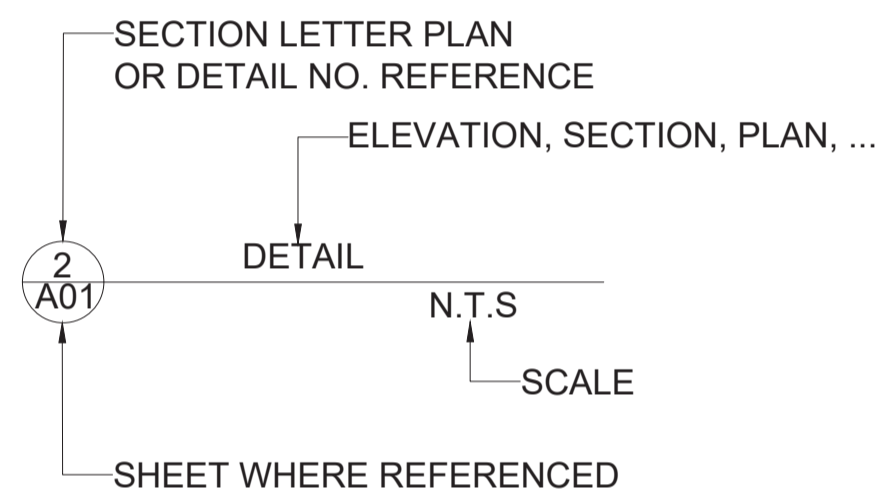
A- NORTH ARROW



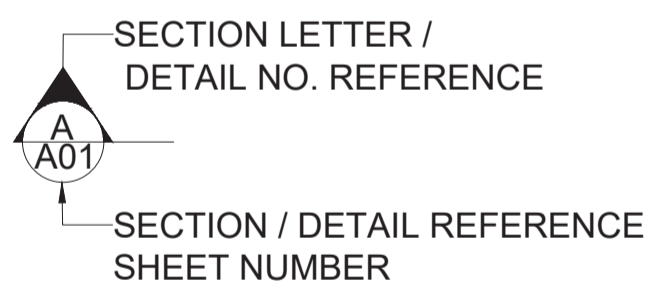
B- DRAWING NUMBER



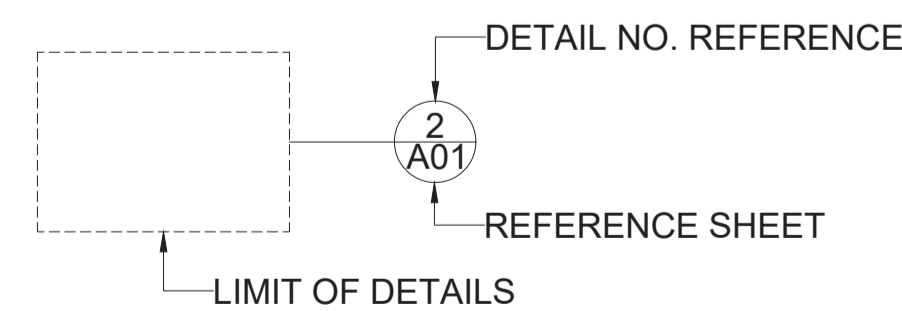
C- DRAWING TITLE



D- SECTION INDICATOR



E- PARTIAL DETAIL



F- HYPERLINK



- EXISTING CONTOUR
- EXISTING GRADE
- PROPOSED GRADE
- SPECIFIED HOUSE GRADE
- EXISTING STORM MANHOLE
- EXISTING SANITARY MANHOLE
- EXISTING CATCH BASIN
- PROPOSED STORM MANHOLE
- PROPOSED STORM BOX MANHOLE
- PROPOSED SANITARY MANHOLE
- CATCH BASIN - NO ICD
- PROPOSED DOUBLE CATCH BASIN
- PROPOSED WATER VALVE/ VALVE AND BOX CHAMBER
- PROPOSED HYDRANT AND VALVE
- PROPOSED DRIVEWAY
- PHASE LIMIT
- DEAD END BARRICADE PER OPSD 912.532
- PROPOSED CHAIN LINK FENCE
- PROPOSED ACOUSTIC FENCE
- PROPOSED POST AND RAIL FENCE
- PROPOSED PRIVACY FENCE
- PROPOSED RETAINING WALL
- PROPOSED LOT NUMBERS
- PROPOSED FRONT DRAINAGE LOT
- PROPOSED SPLIT DRAINAGE LOT
- PROPOSED DECK LOT
- PROPOSED WALKOUT LOT
- TRANSITION LOT
- BACK TO BACK
- ENGINEERED FILL
- PROPOSED DITCH OR SWALE
- PROPOSED 3:1 SLOPE
- OVERLAND FLOW DIRECTION
- EXISTING OVERLAND FLOW DIRECTION
- LOTS REQUIRING RAIN BARRELS
- DRIVEWAY
- TREE PROTECTION FENCE AS PER NMS - 503.00
- CANADA POST MAILBOX
- 100Yr PONDING LIMIT
- EXISTING TREE TO BE REMOVED
- EXISTING TREE TO BE REMOVED REQUIRE ADJACENT OWNER WRITTEN APPROVAL
- EXISTING TREE TO BE PRESERVED
- EXISTING TREE TO BE TRANSPLANTED
- MINIMUM BASEMENT FLOOR ELEVATION
- VALVE AND BOX
- WATER SAMPLING STATION

3- GENERAL ABBREVIATIONS

- TG. TOP GRADE (PROPOSED TOP OF WALL)
- BG. BOTTOM GRADE (PROPOSED BOTTOM OF WALL)
- TOW. TOP OF WALL
- BOW. BOTTOM OF WALL
- DWG. DRAWING
- R.C. REINFORCED CONCRETE
- CONC. CONCRETE
- CL. CENTER LINE
- SEC. SECTION
- DTL. DETAIL
- SYMM. SYMMETRICAL
- VERT. VERTICAL
- HOR. HORIZONTAL
- LGTH. LENGTH
- EXT. EXTERIOR
- INT. INTERIOR
- EX. EL. EXISTING ELEVATION
- FIN. EL. FINISH ELEVATION
- REINF. REINFORCEMENT
- DIA. DIAMETER
- T. TOP
- B. BOTTOM
- FF. FRONT FACE
- BF. BACK FACE
- SP. SPACING
- EQ. EQUAL
- N.G.L. NATURAL GROUND LEVEL
- N.T.S. NOT TO SCALE
- R.C.W. RIGHT CARRIAGEWAY
- L.C.W. LEFT CARRIAGEWAY
- N.J. NEW JERSEY BARRIER
- STD. STANDARD

A- Block height = 2 ft

- TS2 2' TOP STANDARD
- SB2 2' STANDARD
- TCL2 2' TOP CORNER LEFT
- TCR2 2' TOP CORNER RIGHT
- CR2 2' STD. CORNER RIGHT
- CL2 2' STD. CORNER LEFT
- SH2 2' STANDARD HALF
- TH2 2' TOP STANDARD HALF
- ME5 2' MASS EXTENDER 5' WIDTH
- TDSB2 2' TOP STANDARD DOUBLE SIDED
- TTSB2 2' TOP STANDARD TRIPLE SIDED
- DSB2 2' STANDARD DOUBLE SIDED
- TSB2 2' STANDARD TRIPLE SIDED
- DSH2 2' STANDARD HALF DOUBLE SIDED
- TSH2 2' STANDARD HALF TRIPLE SIDED

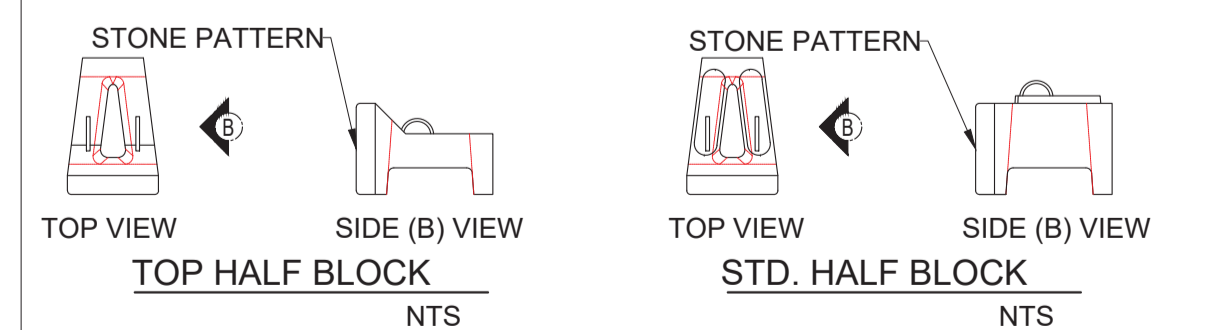
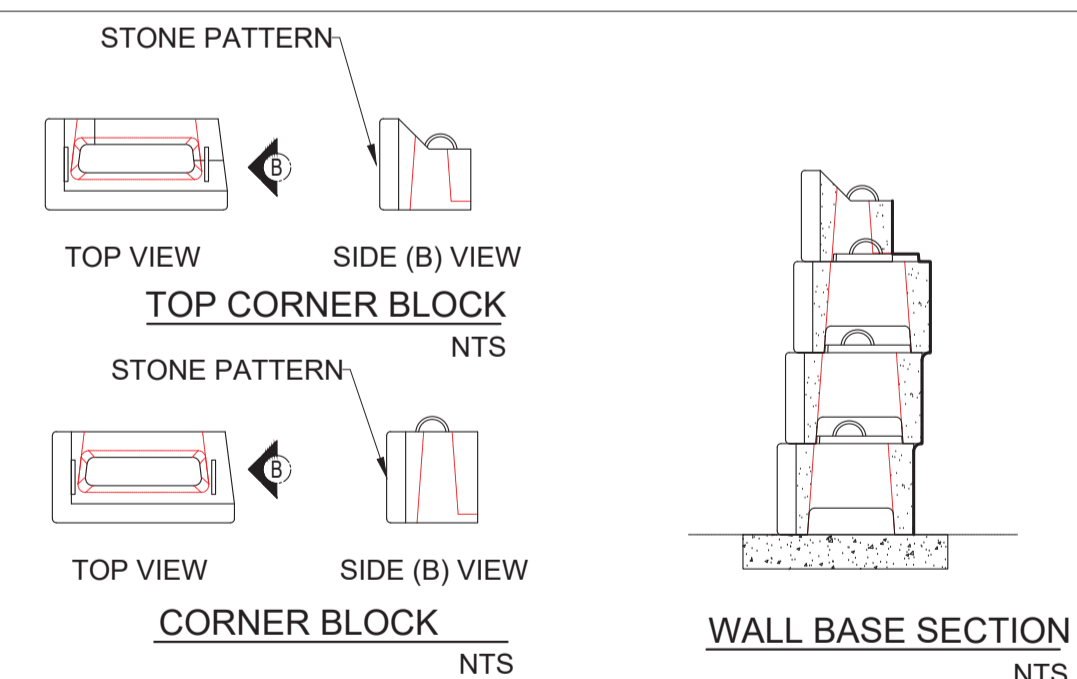
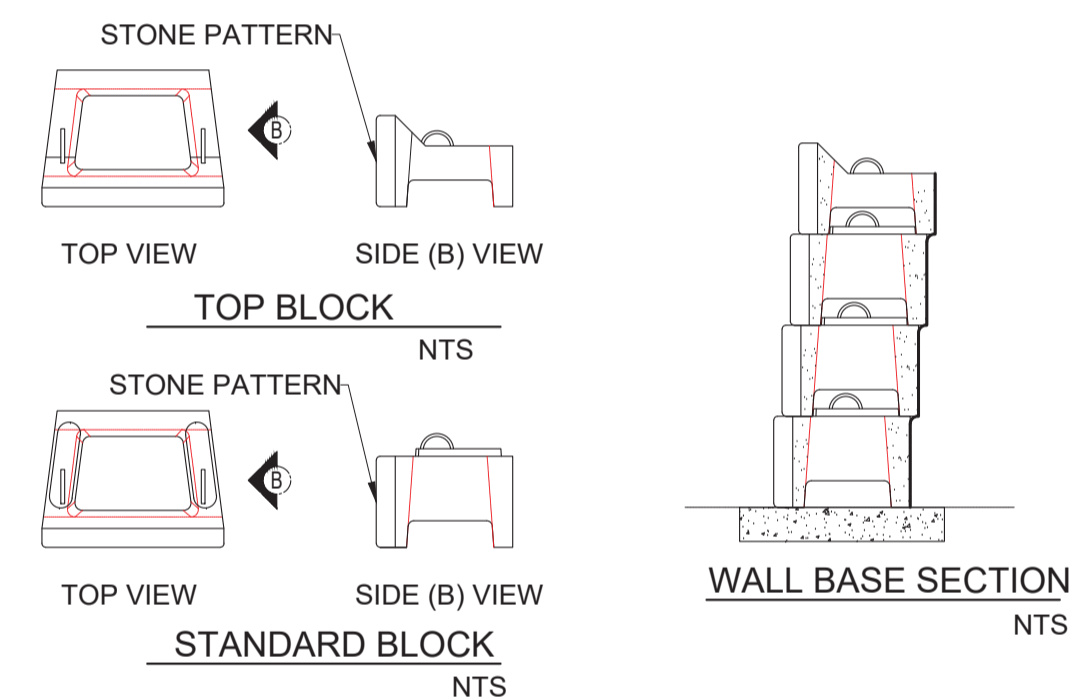
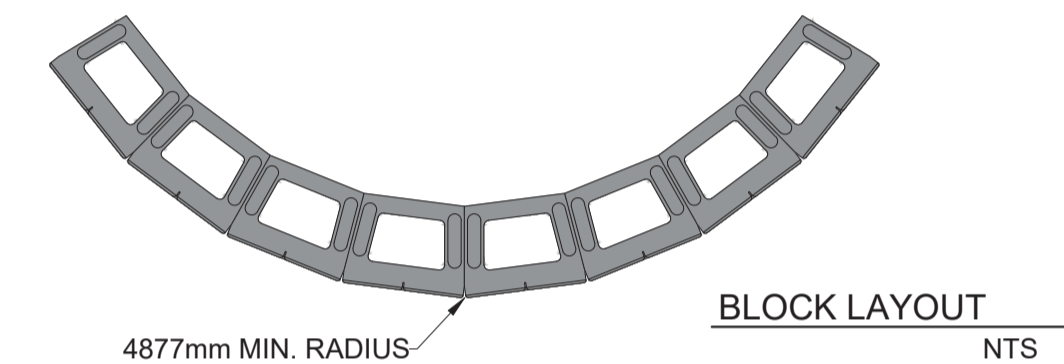
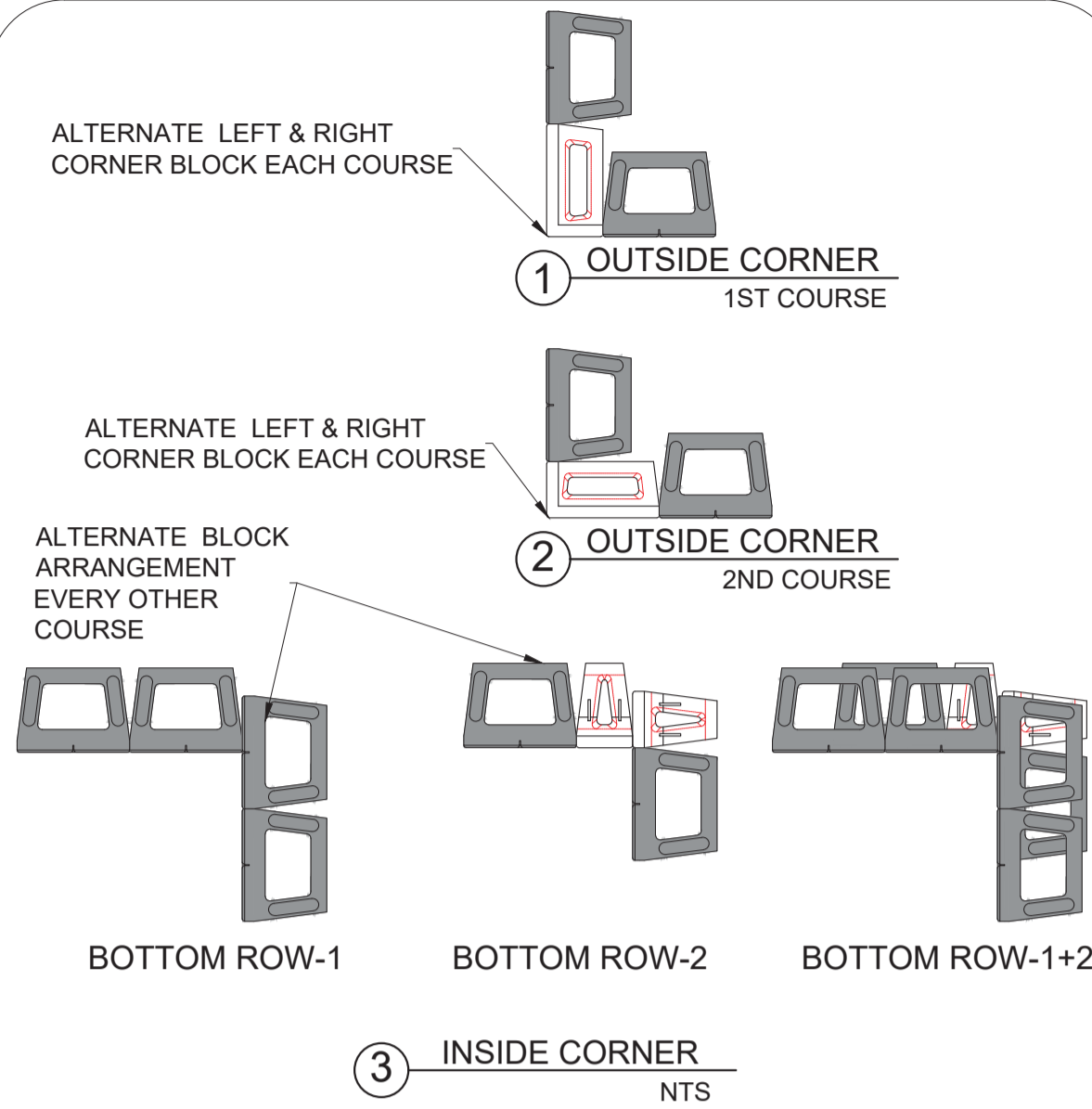
B- Block height = 1 ft

- TS1 1' TOP STANDARD
- SB1 1' STANDARD
- TCL1 1' TOP CORNER LEFT
- TCR1 1' TOP CORNER RIGHT
- CR1 1' STD. CORNER RIGHT
- CL1 1' STD. CORNER LEFT
- SH1 1' STANDARD HALF
- TH1 1' TOP STANDARD HALF
- TDSB1 1' TOP STANDARD DOUBLE SIDED
- TTSB1 1' TOP STANDARD TRIPLE SIDED
- DSB1 1' STANDARD DOUBLE SIDED
- TSB1 1' STANDARD TRIPLE SIDED
- DSH1 1' STANDARD HALF DOUBLE SIDED
- TSH1 1' STANDARD HALF TRIPLE SIDED

C- COPING

- COPING (2 OR 3 SIDED)

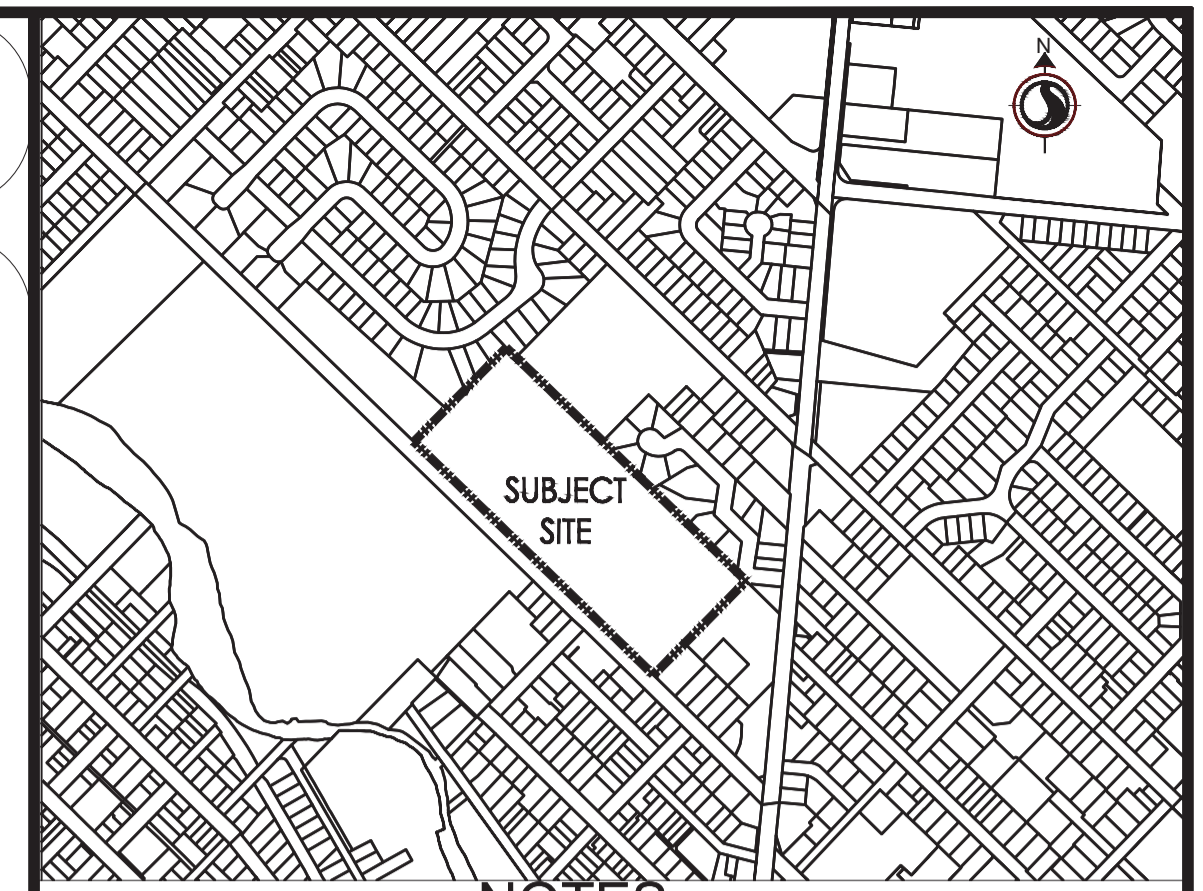
5- WALL PATTERN



FOR MORE INFORMATION

DOWNLOAD DESIGN MANUALS & BROCHURE

HYPERLINK



- KEY PLAN NOTES
- ALL DIMENSIONS ARE IN Mm
 - ALL ELEVATIONS & STATIONS ARE IN M UNLESS OTHERWISE NOTED

DISCLAIMER

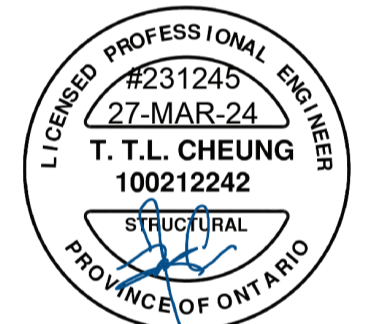
- VERTI-CRETE OF TORONTO IS THE AUTHOR OF THESE DRAWINGS AND RETAIN ALL COMMON LAW, STATUTORY, AND OTHER RESERVED RIGHTS INCLUDING THE COPYRIGHT.
- LIMITED LICENSE IS GRANTED TO COPY, REPRODUCE, OR MODIFY THE DETAILS TO PREPARE CONSTRUCTION DOCUMENTS VERTI-CRETE FENCES AND RETAINING WALLS.
- VERTI-CRETE OF TORONTO MAKES NO WARRANTIES, EITHER EXPRESSED OR IMPLIED, OF MERCHANTABILITY OR FITNESS FOR ANY PARTICULAR PURPOSE, AND ACCEPTS NO RESPONSIBILITY FOR THE ACCURACY, SUITABILITY, OR COMPLETENESS OF INFORMATION CONTAINED HEREIN.

No.	REVISIONS	DATE	BY	REVIEWED
0	FIRST SUBMISSION	2024-01-15	N.P.	A-D ENG.
1	SECOND SUBMISSION	2024-03-26	N.P.	A-D ENG.

REFERENCE DRAWINGS

TITLE	JOB NO.	Rev. NO.	DATE
ISSUED FOR SPA SUBMISSION	140022022	6	2024-01-15

STAMP

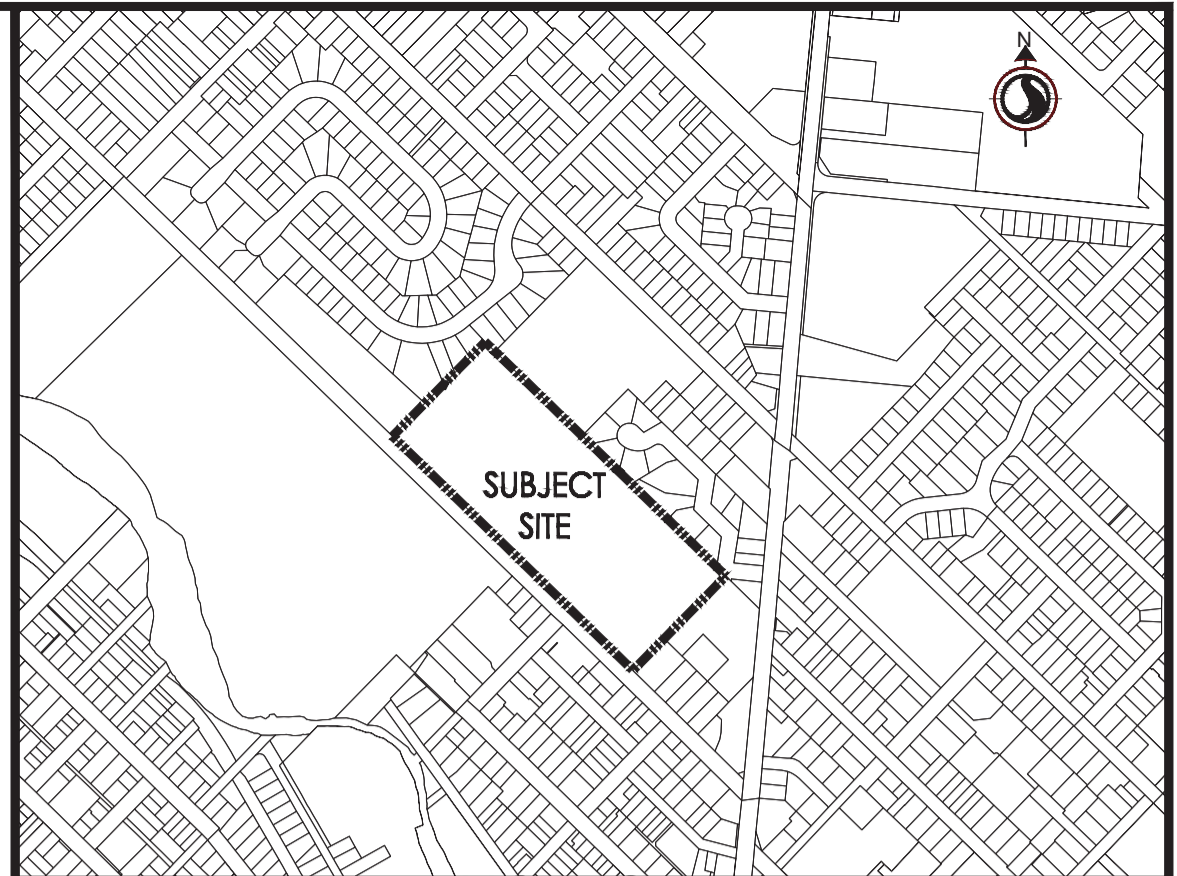
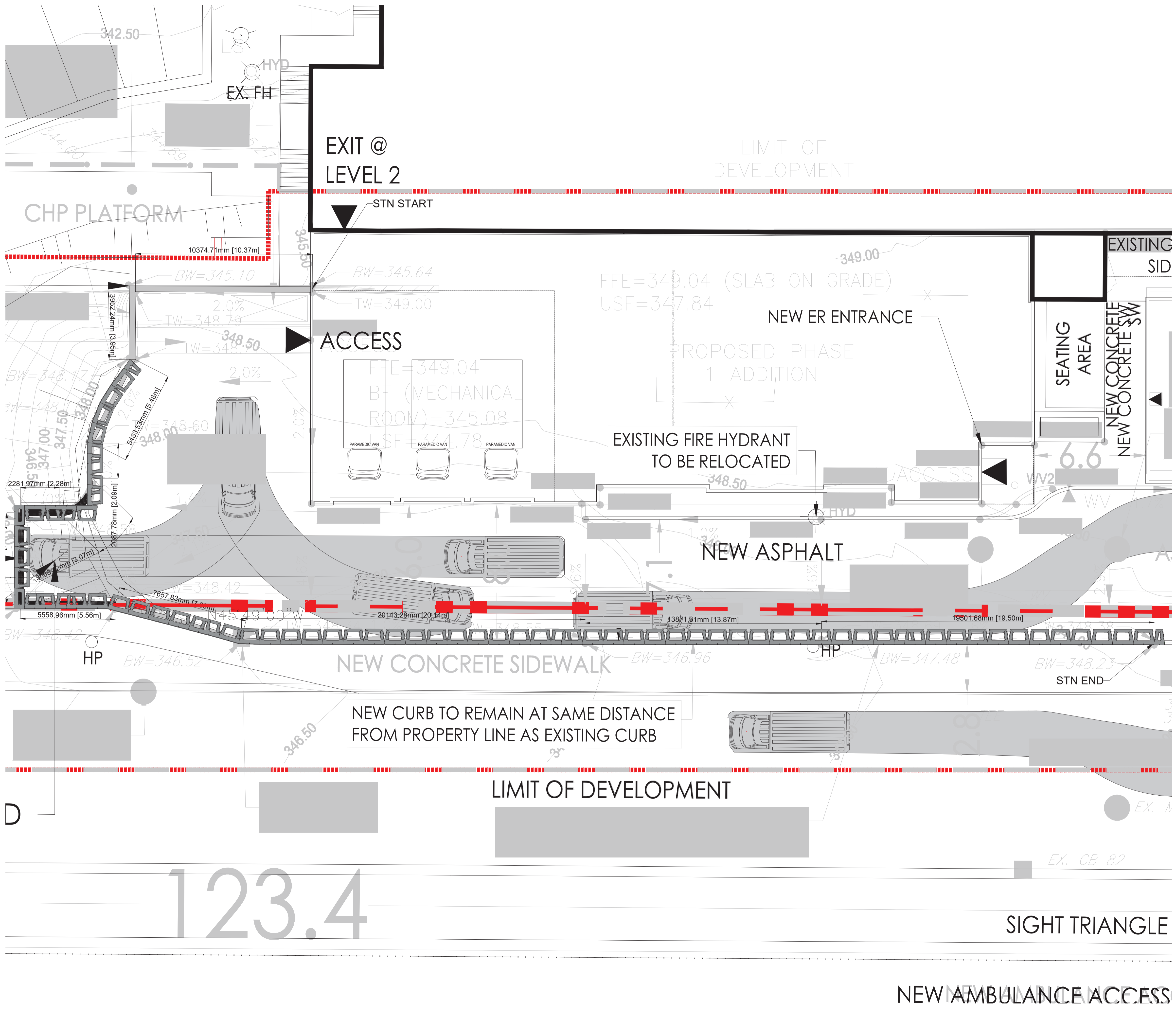


JOB NO. 2023-VC-228
 PROJECT
 GUELPH GENERAL HOSPITAL.
 RETAINING WALL
 SITE ADDRESS GUELPH, ONTARIO

A-D Engineering Group Ltd.
 Consulting Engineers
 45 Eric T Smith Way - Unit 6, Aurora, Ontario, L4G 3Z8
 905-898-3514 Free 1-855-998-3514 Fax 905-898-1998
 Email: info@adengineering.ca www.adengineering.ca

VERTI-CRETE
SABSTONE of TORONTO
 56 QUEEN ST N, Bolton, Ontario, L7E 5B8
 Phone: 905.857.8572
 Fax: 905.857.0865
 www.verticreteto.com

DESIGNED BY: N.PIMENTEL	LEGEND, ABBREVIATIONS & STANDARD DETAILS
PENG APPROVAL:	
PROJECT TYPE: VERTI-BLOCK	A-01
SCALE: n.t.s.	REV. 1
DATE: 2024-03-26	



- NOTES**
1. ALL DIMENSIONS ARE IN Mm
 2. ALL ELEVATIONS & STATIONS ARE IN M UNLESS OTHERWISE NOTED

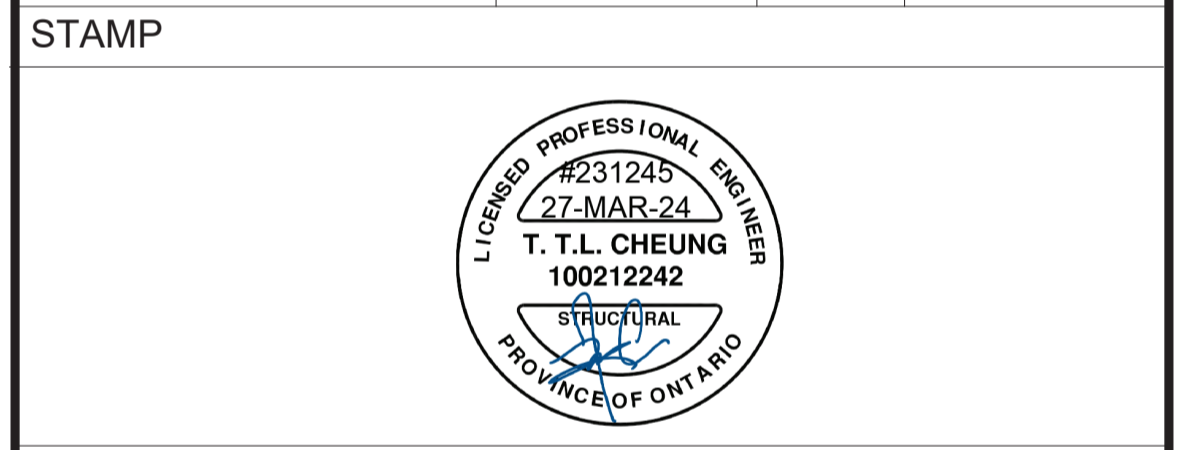
DISCLAIMER

1. VERTI-CRETE OF TORONTO IS THE AUTHOR OF THESE DRAWINGS AND RETAIN ALL COMMON LAW, STATUTORY, AND OTHER RESERVED RIGHTS INCLUDING THE COPYRIGHT.
2. LIMITED LICENSE IS GRANTED TO COPY, REPRODUCE, OR MODIFY THE DETAILS TO PREPARE CONSTRUCTION DOCUMENTS VERTI-CRETE FENCES AND RETAINING WALLS.
3. VERTI-CRETE OF TORONTO MAKES NO WARRANTIES, EITHER EXPRESSED OR IMPLIED, OF MERCHANTABILITY OR FITNESS FOR ANY PARTICULAR PURPOSE, AND ACCEPTS NO RESPONSIBILITY FOR THE ACCURACY, SUITABILITY, OR COMPLETENESS OF INFORMATION CONTAINED HEREIN.

No.	REVISIONS	DATE	BY	REVIEWED
0	FIRST SUBMISSION	2024-01-15	N.P.	A.D. ENG.
1	SECOND SUBMISSION	2024-03-26	N.P.	A.D. ENG.

REFERENCE DRAWINGS

TITLE	JOB NO.	Rev. NO.	DATE
ISSUED FOR SPA SUBMISSION	140022022	6	2024-01-15



PROJECT NUMBER ~ SITE ADDRESS

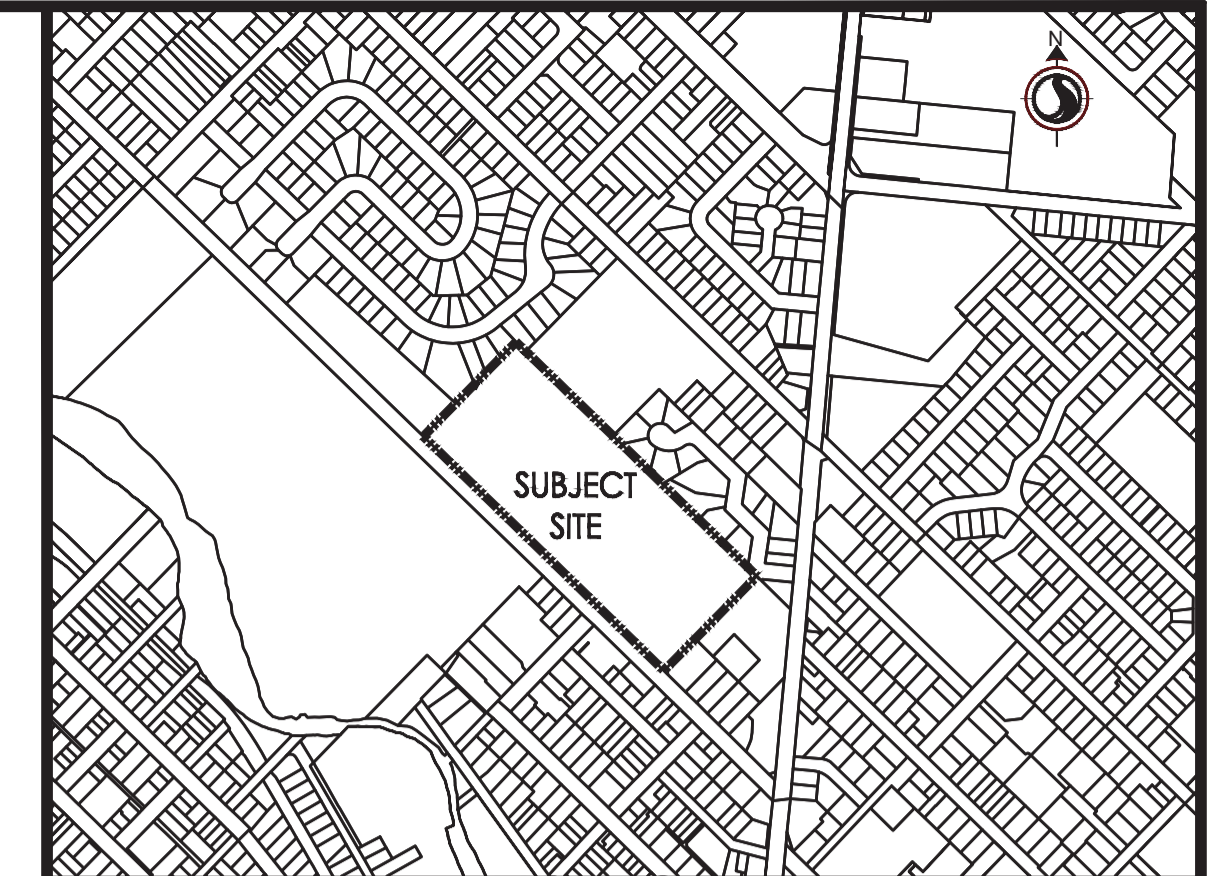
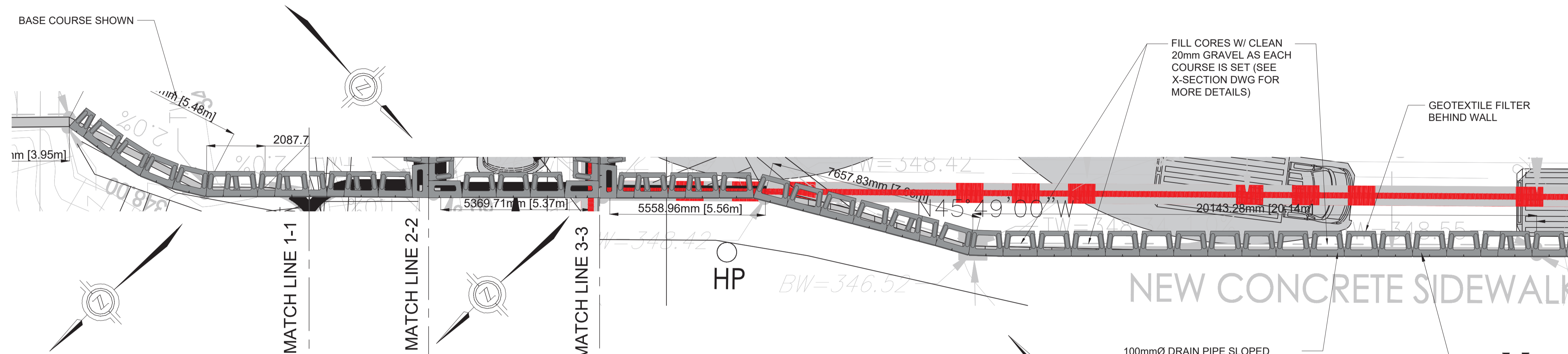
2023-VC-228 - GUELPH GENERAL HOSPITAL - STAMPED_REV.01

A-D Engineering Group Ltd.
 Consulting Engineers
 45 Eric T Smith Way - Unit 6, Aurora, Ontario, L4G 3Z8
 905-898-3514 Free 1-855-998-3514 Fax 905-898-1998
 Email: info@adengineering.ca www.adengineering.ca

VERTI-CRETE
SABSTONE of TORONTO
 56 QUEEN ST N, Bolton, Ontario, L7E 5B8
 Phone: 905.857.8572
 Fax: 905.857.0865
 www.verticreteto.com

DESIGNED BY: N.PIMENTEL	SITE PLAN	PROJECT TYPE: VERTI-BLOCK	A-02	REV. 1
PENG APPROVAL:				
DATE: 2024-03-26	SCALE: 1:200			

CAD FILE: C:\Users\jichao\Documents\Projects\2023\2023-VC-228 - Guelph General Hospital - Stamped_REV.01.dwg
 2023-VC-228 - Guelph General Hospital - Stamped_REV.01.dwg



- KEY PLAN NOTES**
1. ALL DIMENSIONS ARE IN Mm
 2. ALL ELEVATIONS & STATIONS ARE IN M UNLESS OTHERWISE NOTED

DISCLAIMER

1. VERTI-CRETE OF TORONTO IS THE AUTHOR OF THESE DRAWINGS AND RETAIN ALL COMMON LAW, STATUTORY, AND OTHER RESERVED RIGHTS INCLUDING THE COPYRIGHT.
2. LIMITED LICENSE IS GRANTED TO COPY, REPRODUCE, OR MODIFY THE DETAILS TO PREPARE CONSTRUCTION DOCUMENTS VERTI-CRETE FENCES AND RETAINING WALLS.
3. VERTI-CRETE OF TORONTO MAKES NO WARRANTIES, EITHER EXPRESSED OR IMPLIED, OF MERCHANTABILITY OR FITNESS FOR ANY PARTICULAR PURPOSE, AND ACCEPTS NO RESPONSIBILITY FOR THE ACCURACY, SUITABILITY, OR COMPLETENESS OF INFORMATION CONTAINED HEREIN.

No.	REVISIONS	DATE	BY	REVIEWED
0	FIRST SUBMISSION	2024-01-15	N.P.	A.D. ENG.
1	SECOND SUBMISSION	2024-03-26	N.P.	A.D. ENG.

REFERENCE DRAWINGS

TITLE	JOB NO.	Rev. NO.	DATE
ISSUED FOR SPA SUBMISSION	140022022	6	2024-01-15

STAMP

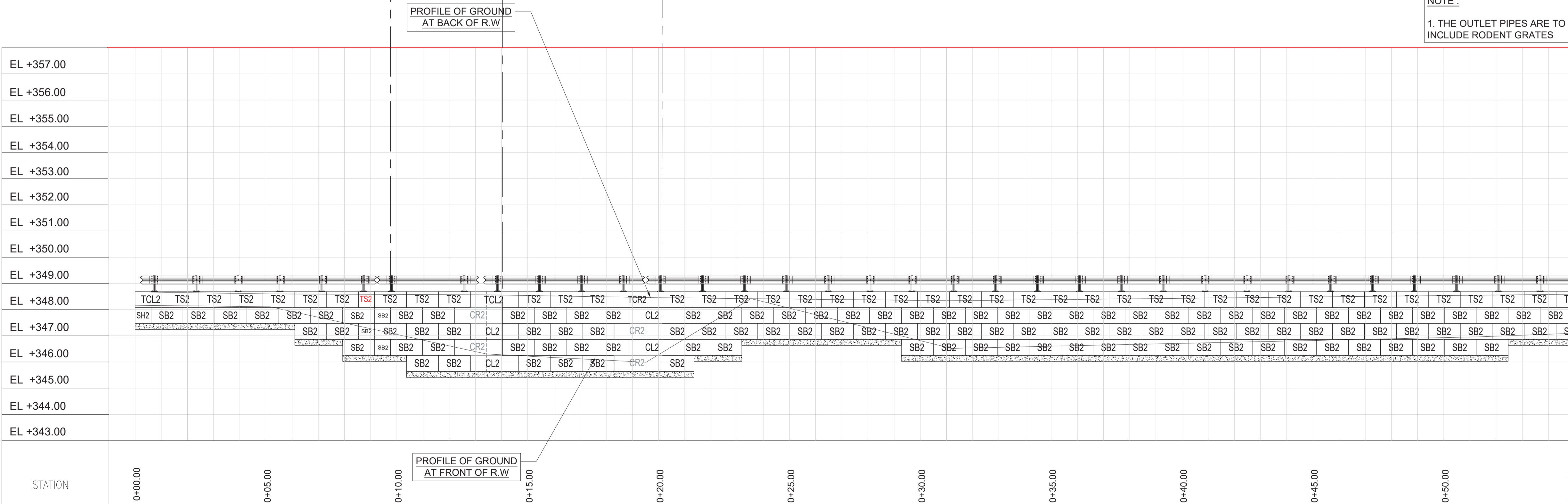
PROJECT NUMBER ~ SITE ADDRESS

2023-VC-228 - GUELPH GENERAL HOSPITAL - STAMPED_REV.01

A-D Engineering Group Ltd.
 Consulting Engineers
 45 Eric T Smith Way - Unit 6, Aurora, Ontario, L4G 3Z8
 905-898-3514 Free 1-855-998-3514 Fax 905-898-1998
 Email: info@adengineering.ca www.adengineering.ca

VERTI-CRETE
SABSTONE of TORONTO
 56 QUEEN ST N, Bolton, Ontario, L7E 5B8
 Phone: 905.857.8572
 Fax: 905.857.0865
 www.verticreteto.com

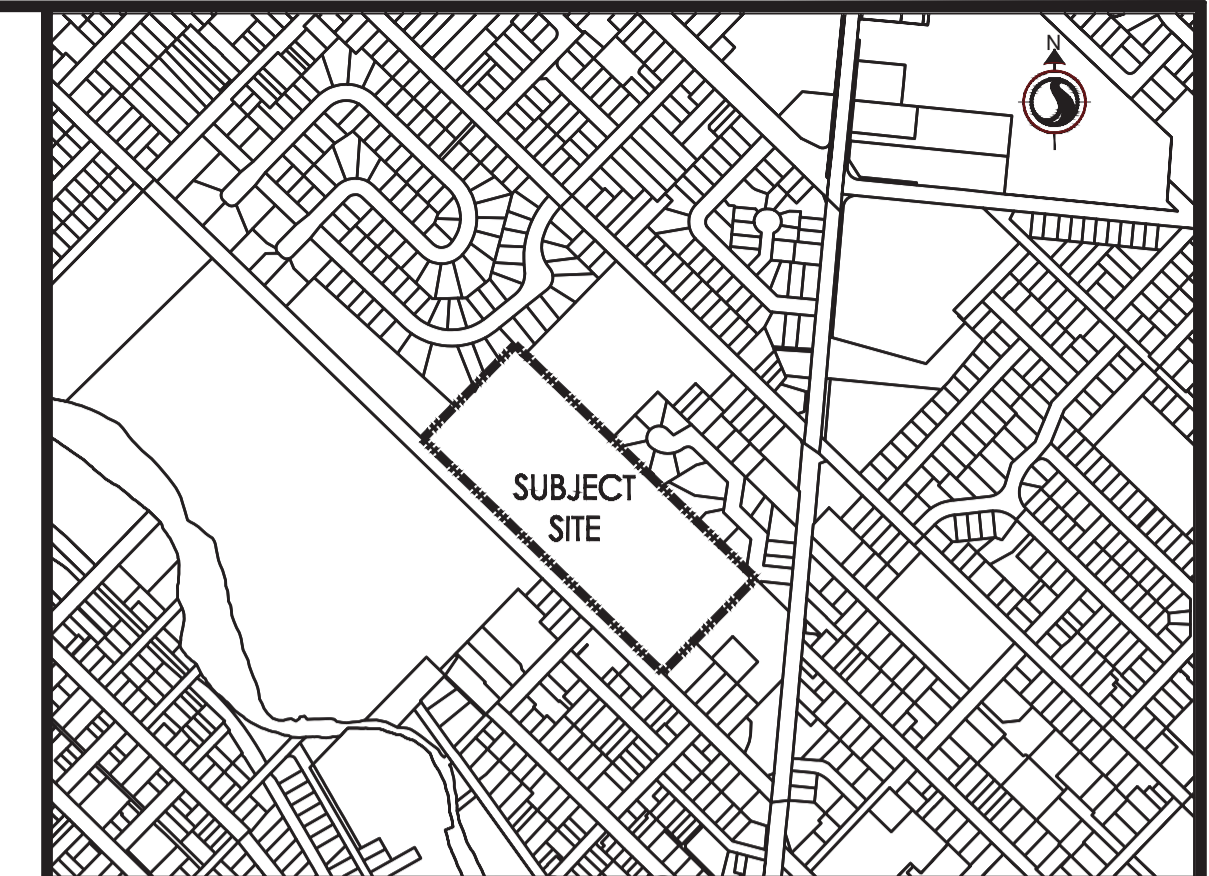
DESIGNED BY: N.PIMENTEL	WALL "A" PLAN & PROFILE	PROJECT TYPE: VERTI-BLOCK	C-01	REV. 1
PENG APPROVAL:				
DATE: 2024-03-26	SCALE: 1:100			



NOTE:
1. THE OUTLET PIPES ARE TO INCLUDE RODENT GRATES

MATCH LINE STA. 0+55.00, SEE DWG C-02

CAD FILE: C:\Users\jichu\Documents\Projects\2023\2023-VC-228 - Guelph General Hospital - Stamped_REV.01.dwg



- KEY PLAN NOTES**
1. ALL DIMENSIONS ARE IN Mm
 2. ALL ELEVATIONS & STATIONS ARE IN M UNLESS OTHERWISE NOTED

DISCLAIMER

1. VERTI-CRETE OF TORONTO IS THE AUTHOR OF THESE DRAWINGS AND RETAIN ALL COMMON LAW, STATUTORY, AND OTHER RESERVED RIGHTS INCLUDING THE COPYRIGHT.
2. LIMITED LICENSE IS GRANTED TO COPY, REPRODUCE, OR MODIFY THE DETAILS TO PREPARE CONSTRUCTION DOCUMENTS VERTI-CRETE FENCES AND RETAINING WALLS.
3. VERTI-CRETE OF TORONTO MAKES NO WARRANTIES, EITHER EXPRESSED OR IMPLIED, OF MERCHANTABILITY OR FITNESS FOR ANY PARTICULAR PURPOSE, AND ACCEPTS NO RESPONSIBILITY FOR THE ACCURACY, SUITABILITY, OR COMPLETENESS OF INFORMATION CONTAINED HEREIN.

No.	REVISIONS	DATE	BY	REVIEWED
0	FIRST SUBMISSION	2024-01-15	N.P.	A.D. ENG.
1	SECOND SUBMISSION	2024-03-26	N.P.	A.D. ENG.

REFERENCE DRAWINGS

TITLE	JOB NO.	Rev. NO.	DATE
ISSUED FOR SPA SUBMISSION	140022022	6	2024-01-15

STAMP

PROJECT NUMBER ~ SITE ADDRESS

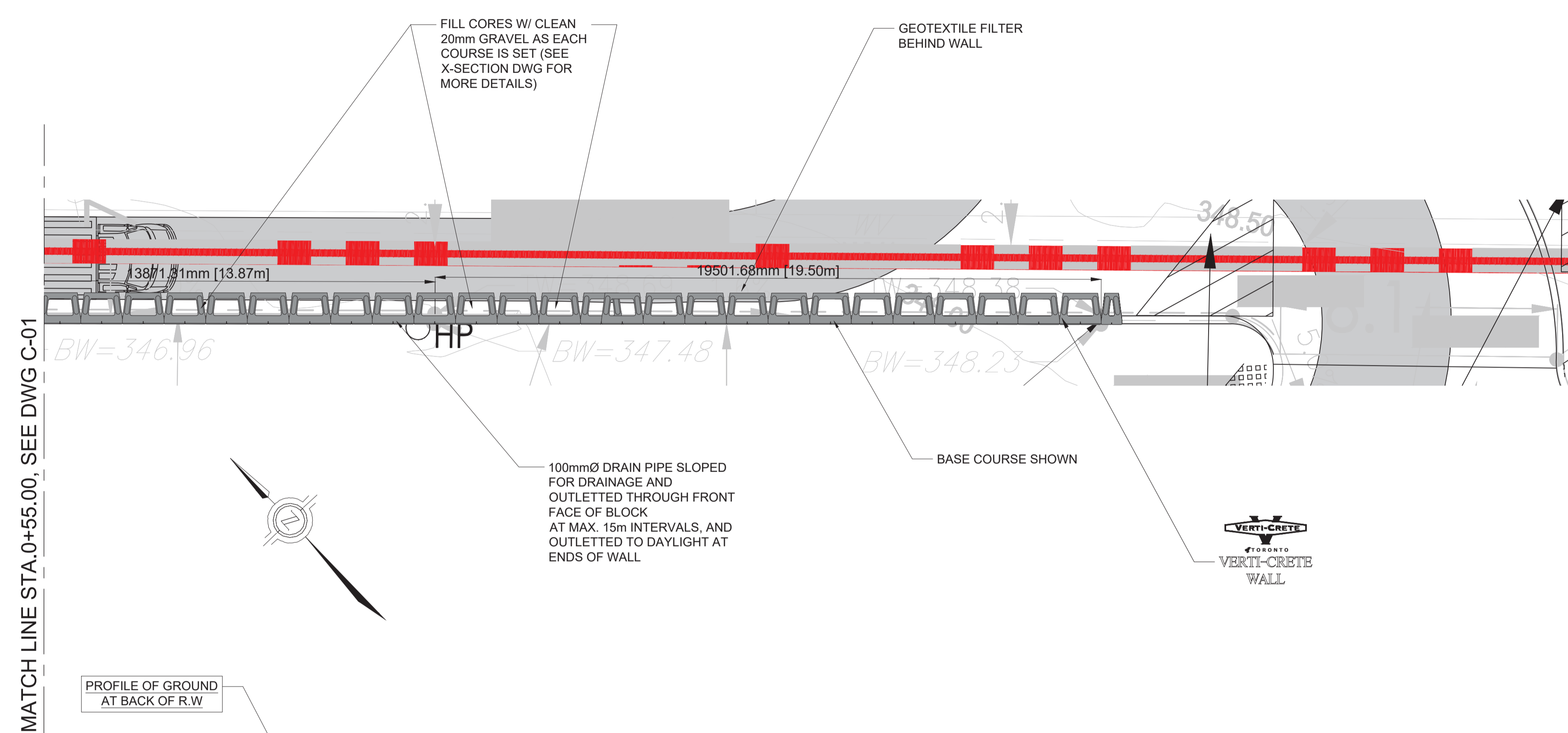
2023-VC-228 -GUELPH GENERAL HOSPITAL -STAMPED_REV.01

A-D Engineering Group Ltd.
 Consulting Engineers
 45 Eric T Smith Way - Unit 6, Aurora, Ontario, L4G 3Z8
 905-898-3514 Free 1-855-998-3514 Fax 905-898-1998
 Email: info@adengineering.ca www.adengineering.ca

VERTI-CRETE
SABSTONE of TORONTO

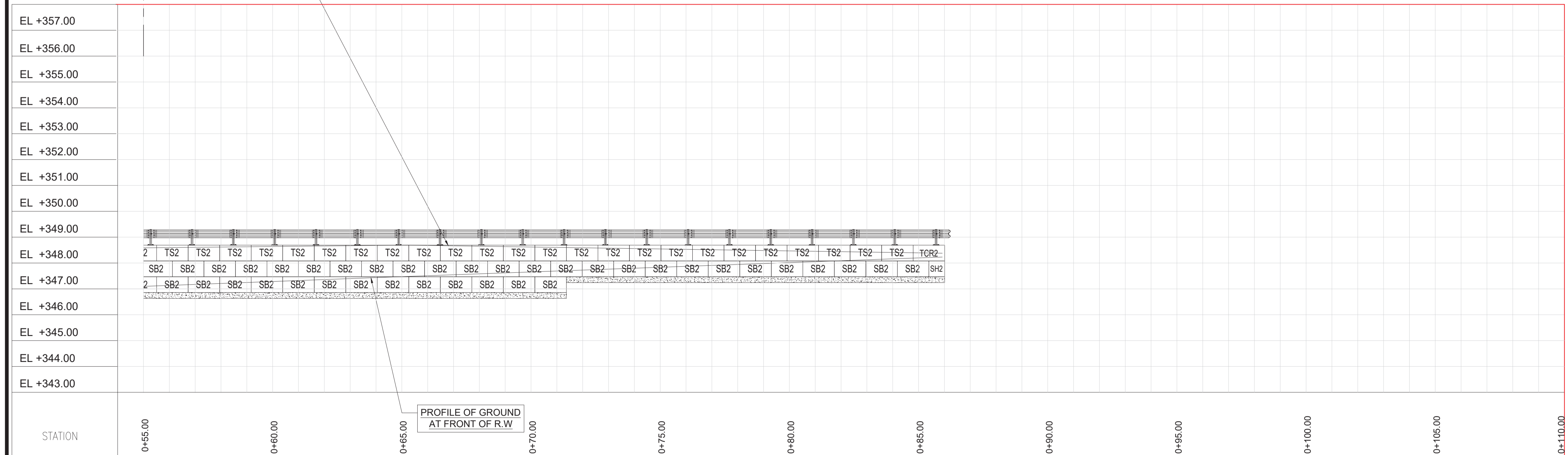
56 QUEEN ST N, Bolton, Ontario, L7E 5B8
 Phone: 905.857.8572
 Fax: 905.857.0865
 www.verticreteto.com

DESIGNED BY: N.PIMENTEL	WALL "A" PLAN & PROFILE	PROJECT TYPE: VERTI-BLOCK	C-02	REV. 1
PENG APPROVAL:				
DATE: 2024-03-26	SCALE: 1:100			



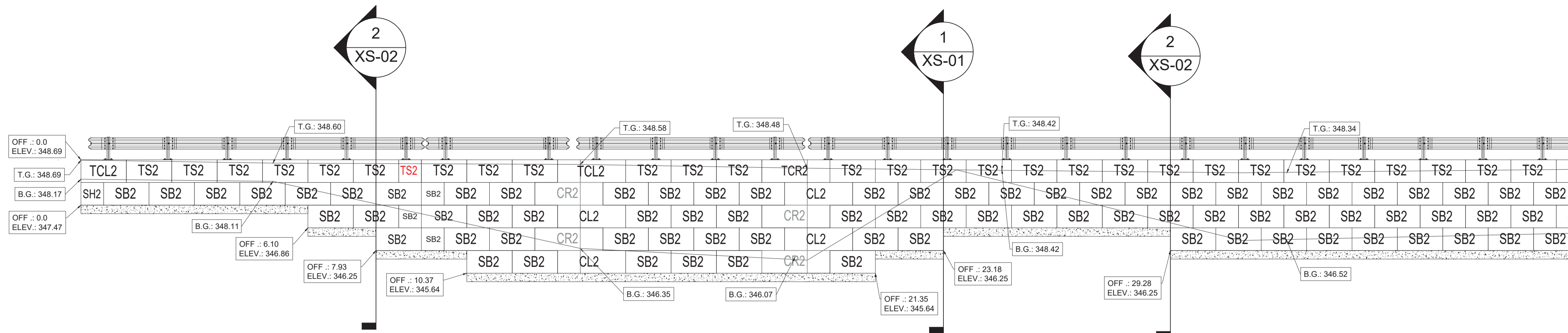
MATCH LINE STA. 0+55.00, SEE DWG C-01

NOTE:
 1. THE OUTLET PIPES ARE TO INCLUDE RODENT GRATES

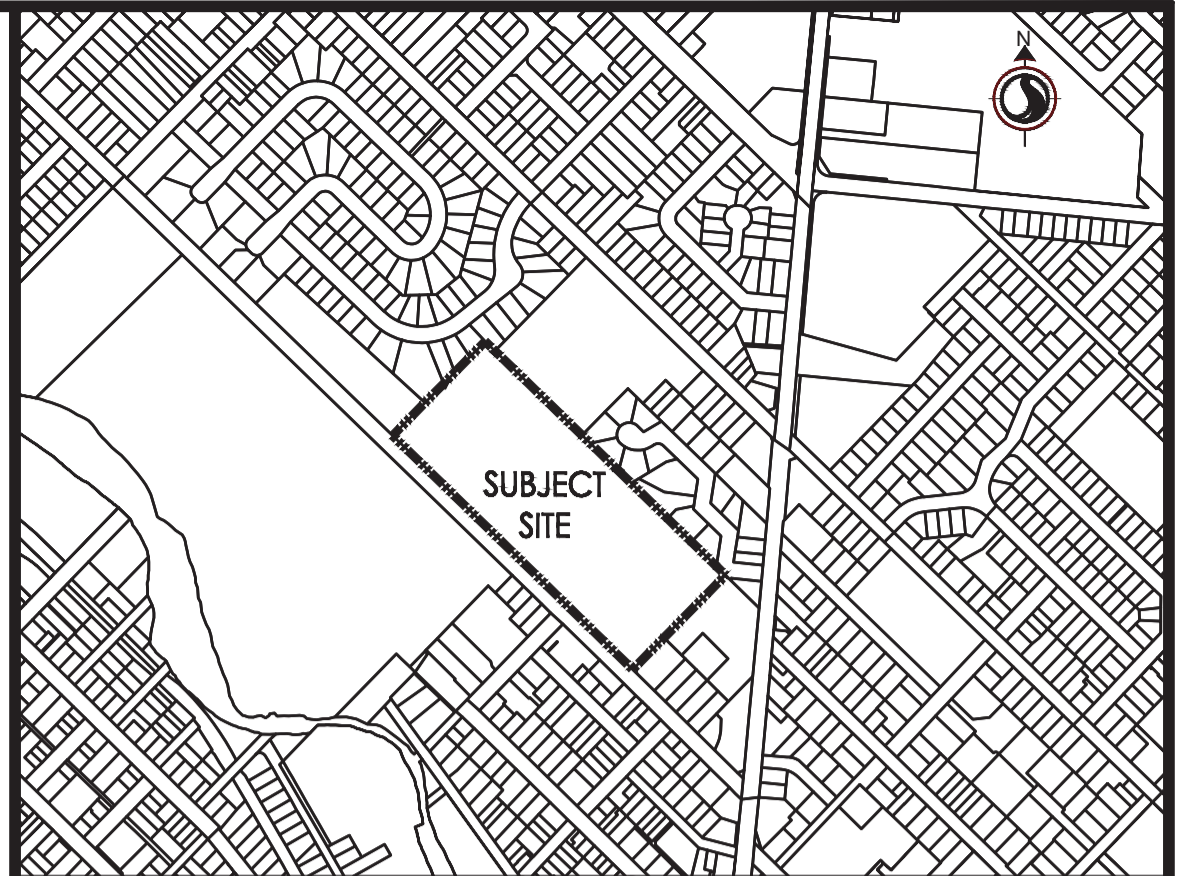


STATION	0+55.00	0+60.00	0+65.00	0+70.00	0+75.00	0+80.00	0+85.00	0+90.00	0+95.00	0+100.00	0+105.00	0+110.00
Profile	[Ground Profile Line]											
Block Type	2 TS2 TCR2 2 SB2 SH2											

CAD FILE: C:\Users\jicho\Documents\Projects\2023\2023-VC-228 - Guelph General Hospital - R/W\VC.01\2023-VC-228 - Guelph General Hospital -Stamped_REV.01.dwg



MATCH LINE 1-1

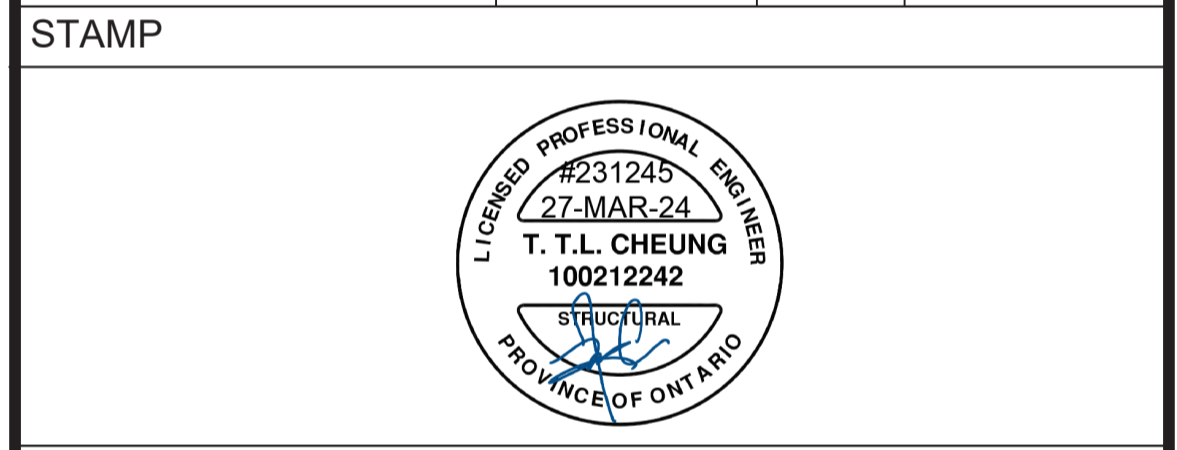


NOTES
 1. ALL DIMENSIONS ARE IN Mm
 2. ALL ELEVATIONS & STATIONS ARE IN M UNLESS OTHERWISE NOTED

DISCLAIMER
 1. VERTI-CRETE OF TORONTO IS THE AUTHOR OF THESE DRAWINGS AND RETAIN ALL COMMON LAW, STATUTORY, AND OTHER RESERVED RIGHTS INCLUDING THE COPYRIGHT.
 2. LIMITED LICENSE IS GRANTED TO COPY, REPRODUCE, OR MODIFY THE DETAILS TO PREPARE CONSTRUCTION DOCUMENTS VERTI-CRETE FENCES AND RETAINING WALLS.
 3. VERTI-CRETE OF TORONTO MAKES NO WARRANTIES, EITHER EXPRESSED OR IMPLIED, OF MERCHANTABILITY OR FITNESS FOR ANY PARTICULAR PURPOSE, AND ACCEPTS NO RESPONSIBILITY FOR THE ACCURACY, SUITABILITY, OR COMPLETENESS OF INFORMATION CONTAINED HEREIN.

No.	REVISIONS	DATE	BY	REVIEWED
0	FIRST SUBMISSION	2024-01-15	N.P.	A.D. ENG.
1	SECOND SUBMISSION	2024-03-26	N.P.	A.D. ENG.

REFERENCE DRAWINGS			
TITLE	JOB NO.	Rev. NO.	DATE
ISSUED FOR SPA SUBMISSION	140022022	6	2024-01-15



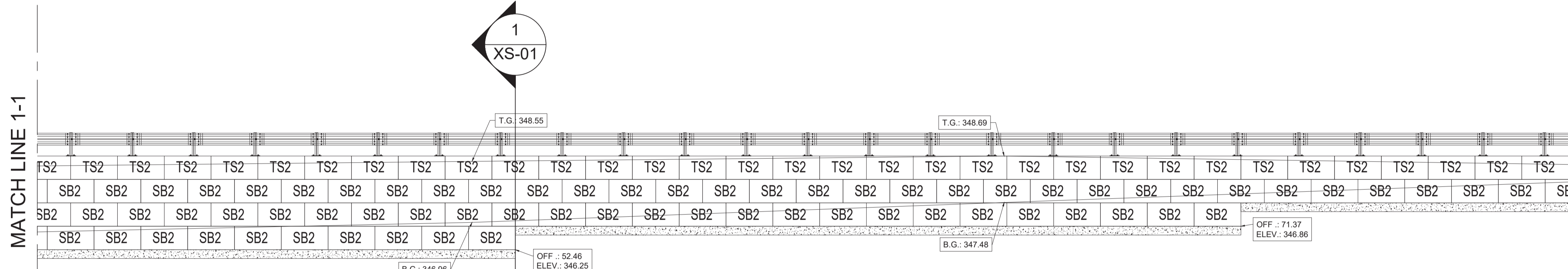
PROJECT NUMBER ~ SITE ADDRESS

 2023-VC-228 - GUELPH GENERAL HOSPITAL - STAMPED_REV.01



56 QUEEN ST N, Bolton, Ontario, L7E 5B8
 Phone: 905.857.8572
 Fax: 905.857.0865
 www.verticreteto.com

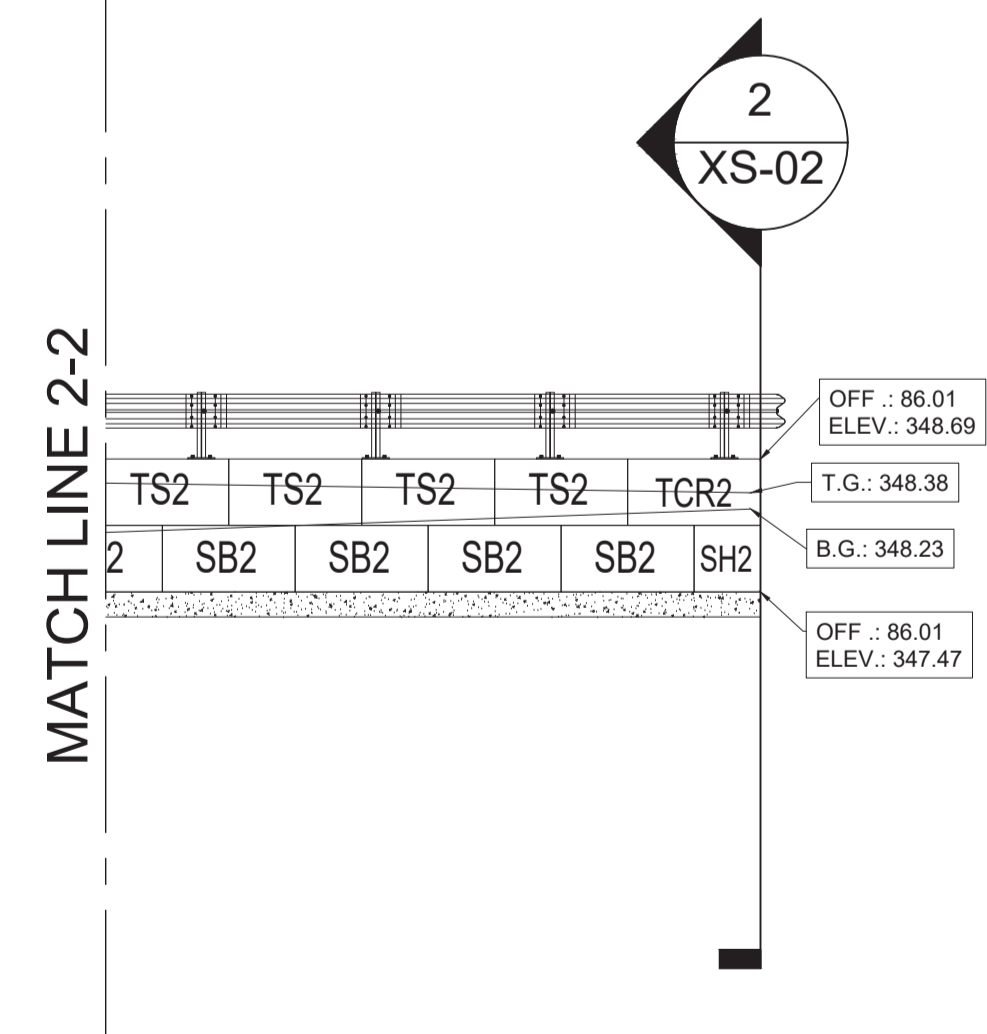
DESIGNED BY: N.PIMENTEL	WALL "A" BLOCKS ARRANGEMENT	PROJECT TYPE: VERTI-BLOCK	C-03	REV. 1
PENG APPROVAL:				
DATE: 2024-03-26	SCALE: 1:75			



MATCH LINE 1-1

MATCH LINE 2-2

WALL A		
BLOCK DESCRIPTION	ID	QTY
2' Top Standard	TS2	66
2' Top Corner Right	TCR2	2
2' Top Corner Left	TCL2	2
2' Standard	SB2	153
2' Standard Half	SH2	2
2' Std. Corner Right	CR2	4
2' Std. Corner Left	CL2	4
TOTAL BLOCK COUNT		233



MATCH LINE 2-2

CAD FILE: C:\Users\Nicho\Documents\Projects\2023\2023-VC-228 - Guelph General Hospital - Stamped_REV.01.dwg

NOTE:
WALL ALONG HUNTINGTON BYPASS
DESIGNED FOR 12 kPa TRAFFIC
SURCHARGE

GUIDERAIL POST PER OPSS
912.127 (BY OTHERS)
EMBEDDED INTO SECOND
COURSE OF BLOCK

CHAINLINK FENCE OR PEDESTRIAN GUARDRAIL POST,
CAST IN TOP COURSE OF WALL. STAGGER PLACEMENT
WITH VEHICULAR GUIDERAIL POSTS

CUT SPACER STRANDS AND
PINCH GEOGRID LAYERS
AROUND GUIDERAIL POSTS
PRIOR TO BACKFILL. DO NOT
CUT PRINCIPLE STRANDS OF
STRENGTH

FILL TOP COURSE WITH 30MPa
HIGH SLUMP CONCRETE AT
GUIDERAIL/PEDESTRIAN GUARD
FENCE POST LOCATIONS ONLY

TERRAFIX 270R GEOTEXTILE FILTER
BEHIND DRAINAGE LAYER AND
BENEATH SURFACE FINISH (BY
OTHERS)

FILL TOP TWO COURSES WITH 30MPa HIGH
SLUMP CONCRETE AT GUIDERAIL POST
LOCATIONS ONLY

SURFACE FINISH

FILL REMAINING CORES W/ CLEARSTONE AS EACH
COURSE IS SET

VERTI-BLOCK UNIT
610MM HIGH
X 1220MM WIDE
X 910MM DEEP

50
OFFSET
TYP.

NATIVE UNDISTURBED
MATERIAL

GRANULAR 'A' FREE DRAINING MATERIAL
COMPACTED TO 98% SPDD (TYP)

2.90m MIN
SG200 GEOGRID BEHIND WALL

2.90m MIN
SG200 GEOGRID BEHIND WALL

2.90m MIN
SG200 GEOGRID BEHIND WALL

2.90m MIN
SG500 GEOGRID BEHIND WALL

EXCAVATION TO BE COMPLETED TO APPLICABLE
OCCUPATIONAL HEALTH AND SAFETY STANDARDS.
TEMPORARY SHORING TO BE PROVIDED AND DESIGNED BY
OTHERS IF REQUIRED. OFFSET FROM END OF GEOGRID
LAYERS AS NECESSARY TO PROVIDE SAFE EXCAVATION
FACE

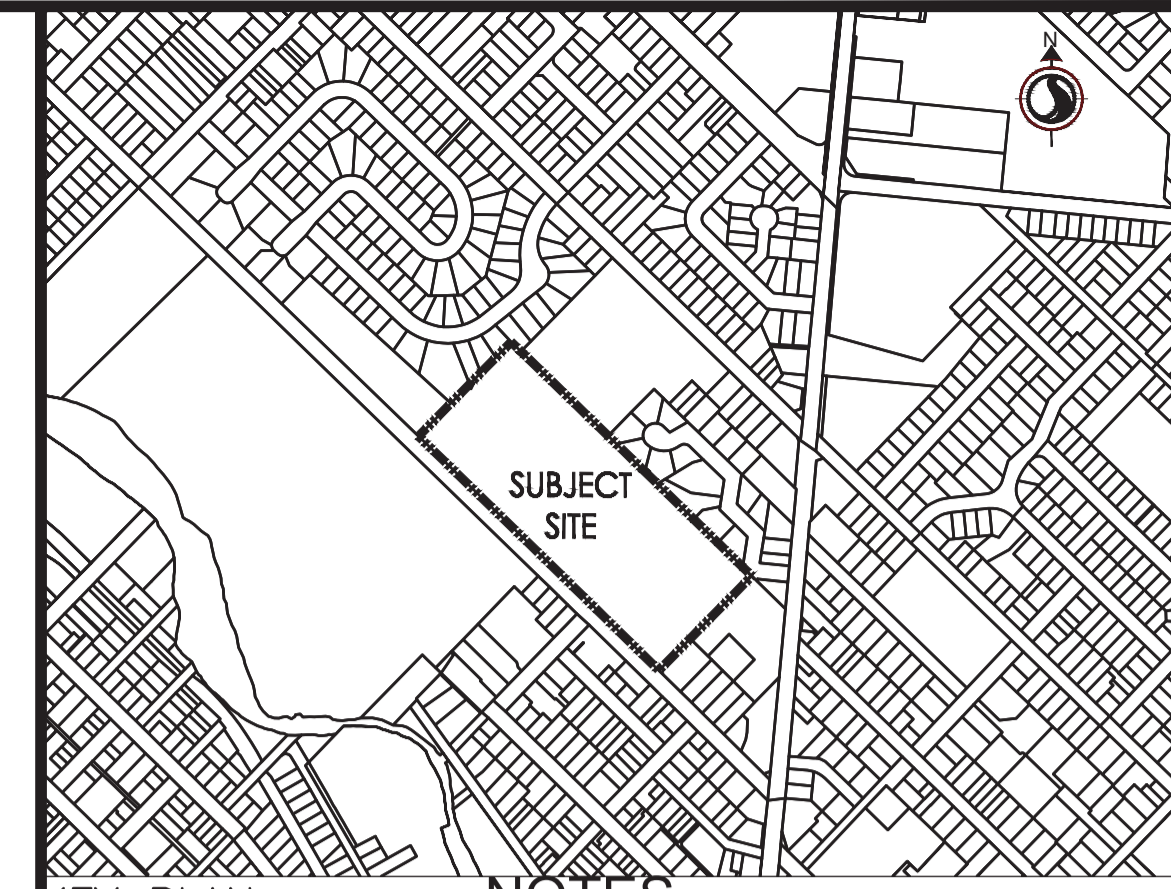
UPPER LAYERS OF 3.8m LONG SG500 GEOGRID
(MIN 2.9m BEHIND WALL)

BASE LAYER OF 3.8m LONG SG500 GEOGRID
(MIN 2.9m BEHIND WALL)

GRAVEL BASE COURSE
500 MIN. DEPTH PLACED
ON NATIVE UNDISTURBED
SOIL WITH A MINIMUM
BEARING CAPACITY OF
100 kPa. GRANULAR 'A' MATERIAL
COMPACTED TO 98% SPDD.
REFER TO OPSS1010

100mmØ PERFORATED DRAIN PIPE SURROUNDED
BY DRAIN STONE & WRAPPED IN GEOTEXTILE
FILTER CLOTH SLOPED FOR DRAINAGE AND
OUTLETTED THROUGH FRONT FACE OF BLOCK AT
MAX. 15m INTERVALS, AND OUTLETTED TO
DAYLIGHT AT ENDS OF WALL. PROVIDE RODENT
GRATE AT DRAIN OUTLETS. DRAIN PIPE TO BE
OUTLETTED THROUGH FRONT OF BLOCK
THROUGH T-CONNECTION. VERTI-CRETE WALL
UNITS TO BE MECHANICALLY CORED AND PARGED
CLEAN TO ALLOW FOR OUTLET

1
XS-01 REINFORCED WALL, 4 TO 5 COURSES HIGH



- KEY PLAN NOTES
1. ALL DIMENSIONS ARE IN Mm
 2. ALL ELEVATIONS & STATIONS ARE IN M UNLESS OTHERWISE NOTED

DISCLAIMER

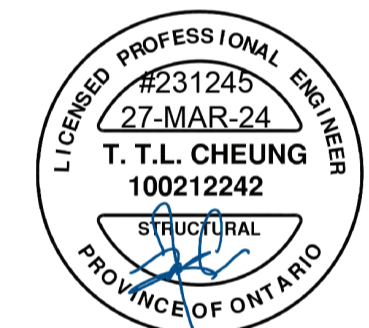
1. VERTI-CRETE OF TORONTO IS THE AUTHOR OF THESE DRAWINGS AND RETAIN ALL COMMON LAW, STATUTORY, AND OTHER RESERVED RIGHTS INCLUDING THE COPYRIGHT.
2. LIMITED LICENSE IS GRANTED TO COPY, REPRODUCE, OR MODIFY THE DETAILS TO PREPARE CONSTRUCTION DOCUMENTS VERTI-CRETE FENCES AND RETAINING WALLS.
3. VERTI-CRETE OF TORONTO MAKES NO WARRANTIES, EITHER EXPRESSED OR IMPLIED, OF MERCHANTABILITY OR FITNESS FOR ANY PARTICULAR PURPOSE, AND ACCEPTS NO RESPONSIBILITY FOR THE ACCURACY, SUITABILITY, OR COMPLETENESS OF INFORMATION CONTAINED HEREIN.

No.	REVISIONS	DATE	BY	REVIEWED
0	FIRST SUBMISSION	2024-01-15	N.P.	A.D. ENG.
1	SECOND SUBMISSION	2024-03-26	N.P.	A.D. ENG.

REFERENCE DRAWINGS

TITLE	JOB NO.	Rev. NO.	DATE
ISSUED FOR SPA SUBMISSION	140022022	6	2024-01-15

STAMP



PROJECT NUMBER ~ SITE ADDRESS

2023-VC-228 - GUELPH GENERAL HOSPITAL - STAMPED_REV.01

A-D Engineering Group Ltd.
Consulting Engineers
45 Eric T Smith Way - Unit 6, Aurora, Ontario, L4G 3Z8
905-898-3514 Free 1-855-998-3514 Fax 905-898-1998
Email: info@adengineering.ca www.adengineering.ca



56 QUEEN ST N, Bolton, Ontario, L7E 5B8
Phone: 905.857.8572
Fax: 905.857.0865
www.verticreteto.com

DESIGNED BY: N.PIMENTEL

PENG APPROVAL:

WALL X-SECTIONS

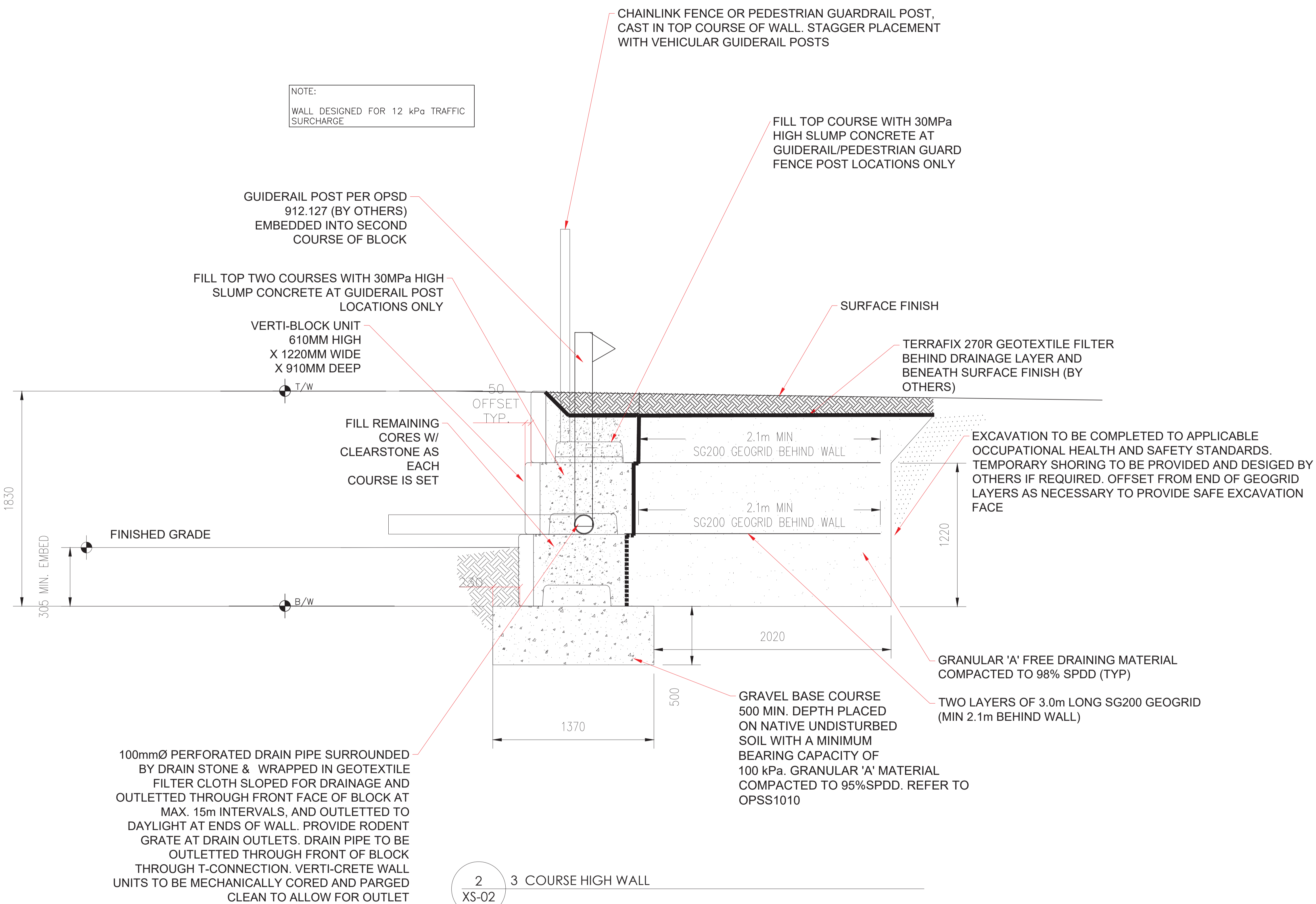
PROJECT TYPE:
VERTI-BLOCK

XS-01

REV.
1

DATE: 2024-03-26

SCALE: N.T.S.



NOTE:
WALL DESIGNED FOR 12 kPa TRAFFIC SURCHARGE

CHAINLINK FENCE OR PEDESTRIAN GUARDRAIL POST, CAST IN TOP COURSE OF WALL. STAGGER PLACEMENT WITH VEHICULAR GUIDERAIL POSTS

FILL TOP COURSE WITH 30MPa HIGH SLUMP CONCRETE AT GUIDERAIL/PEDESTRIAN GUARD FENCE POST LOCATIONS ONLY

GUIDERAIL POST PER OPSD 912.127 (BY OTHERS) EMBEDDED INTO SECOND COURSE OF BLOCK

FILL TOP TWO COURSES WITH 30MPa HIGH SLUMP CONCRETE AT GUIDERAIL POST LOCATIONS ONLY

VERTI-BLOCK UNIT 610MM HIGH X 1220MM WIDE X 910MM DEEP

SURFACE FINISH

TERRAFIX 270R GEOTEXTILE FILTER BEHIND DRAINAGE LAYER AND BENEATH SURFACE FINISH (BY OTHERS)

FILL REMAINING CORES W/ CLEARSTONE AS EACH COURSE IS SET

EXCAVATION TO BE COMPLETED TO APPLICABLE OCCUPATIONAL HEALTH AND SAFETY STANDARDS. TEMPORARY SHORING TO BE PROVIDED AND DESIGNED BY OTHERS IF REQUIRED. OFFSET FROM END OF GEOGRID LAYERS AS NECESSARY TO PROVIDE SAFE EXCAVATION FACE

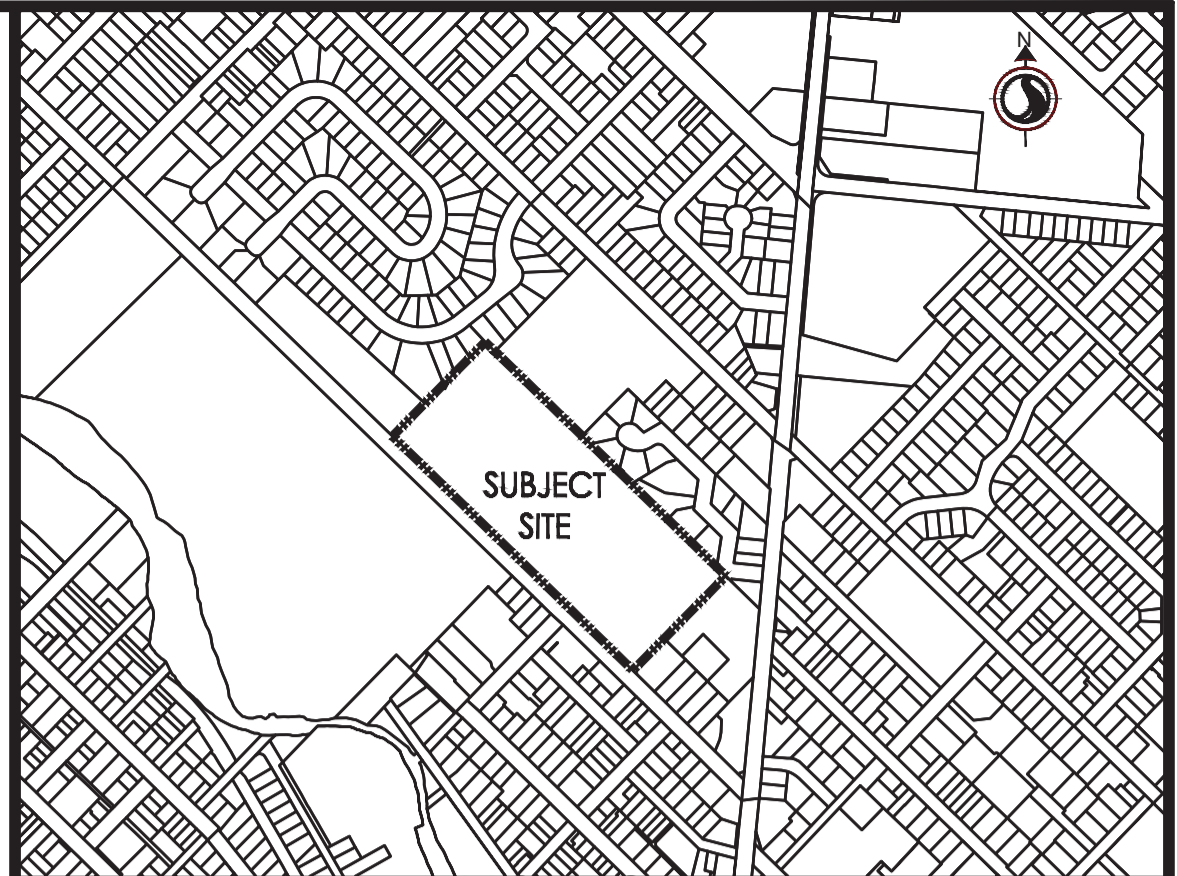
GRANULAR 'A' FREE DRAINING MATERIAL COMPACTED TO 98% SPDD (TYP)

TWO LAYERS OF 3.0m LONG SG200 GEOGRID (MIN 2.1m BEHIND WALL)

GRAVEL BASE COURSE 500 MIN. DEPTH PLACED ON NATIVE UNDISTURBED SOIL WITH A MINIMUM BEARING CAPACITY OF 100 kPa. GRANULAR 'A' MATERIAL COMPACTED TO 95%SPDD. REFER TO OPSS1010

100mmØ PERFORATED DRAIN PIPE SURROUNDED BY DRAIN STONE & WRAPPED IN GEOTEXTILE FILTER CLOTH SLOPED FOR DRAINAGE AND OUTLETTED THROUGH FRONT FACE OF BLOCK AT MAX. 15m INTERVALS, AND OUTLETTED TO DAYLIGHT AT ENDS OF WALL. PROVIDE RODENT GRATE AT DRAIN OUTLETS. DRAIN PIPE TO BE OUTLETTED THROUGH FRONT OF BLOCK THROUGH T-CONNECTION. VERTI-CRETE WALL UNITS TO BE MECHANICALLY CORED AND PARGED CLEAN TO ALLOW FOR OUTLET

2 3 COURSE HIGH WALL XS-02

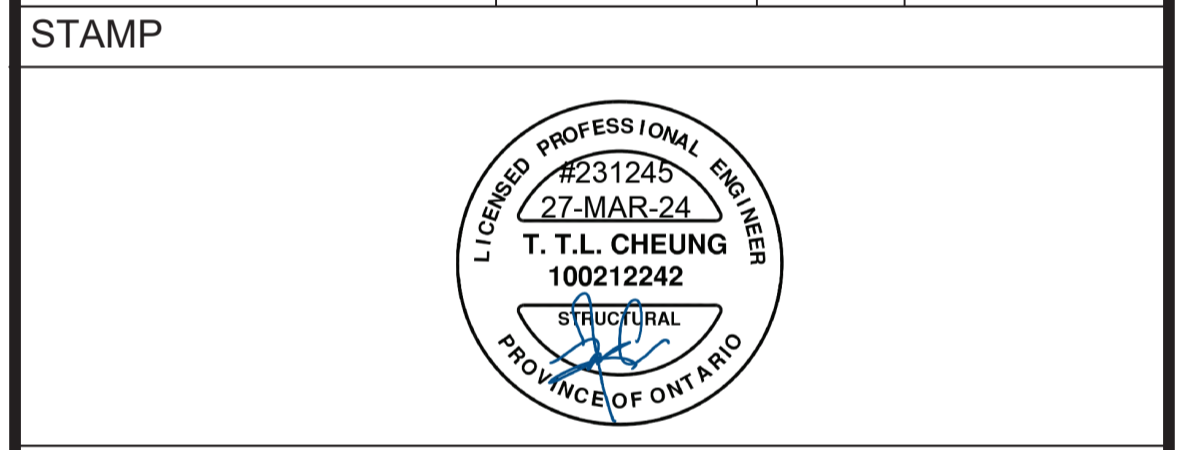


KEY PLAN NOTES
1. ALL DIMENSIONS ARE IN Mm
2. ALL ELEVATIONS & STATIONS ARE IN M UNLESS OTHERWISE NOTED

DISCLAIMER
1. VERTI-CRETE OF TORONTO IS THE AUTHOR OF THESE DRAWINGS AND RETAIN ALL COMMON LAW, STATUTORY, AND OTHER RESERVED RIGHTS INCLUDING THE COPYRIGHT.
2. LIMITED LICENSE IS GRANTED TO COPY, REPRODUCE, OR MODIFY THE DETAILS TO PREPARE CONSTRUCTION DOCUMENTS VERTI-CRETE FENCES AND RETAINING WALLS.
3. VERTI-CRETE OF TORONTO MAKES NO WARRANTIES, EITHER EXPRESSED OR IMPLIED, OF MERCHANTABILITY OR FITNESS FOR ANY PARTICULAR PURPOSE, AND ACCEPTS NO RESPONSIBILITY FOR THE ACCURACY, SUITABILITY, OR COMPLETENESS OF INFORMATION CONTAINED HEREIN.

No.	REVISIONS	DATE	BY	REVIEWED
0	FIRST SUBMISSION	2024-01-15	N.P.	A.D. ENG.
1	SECOND SUBMISSION	2024-03-26	N.P.	A.D. ENG.

REFERENCE DRAWINGS			
TITLE	JOB NO.	Rev. NO.	DATE
ISSUED FOR SPA SUBMISSION	140022022	6	2024-01-15



PROJECT NUMBER ~ SITE ADDRESS
2023-VC-228 -GUELPH GENERAL HOSPITAL -STAMPED_REV.01

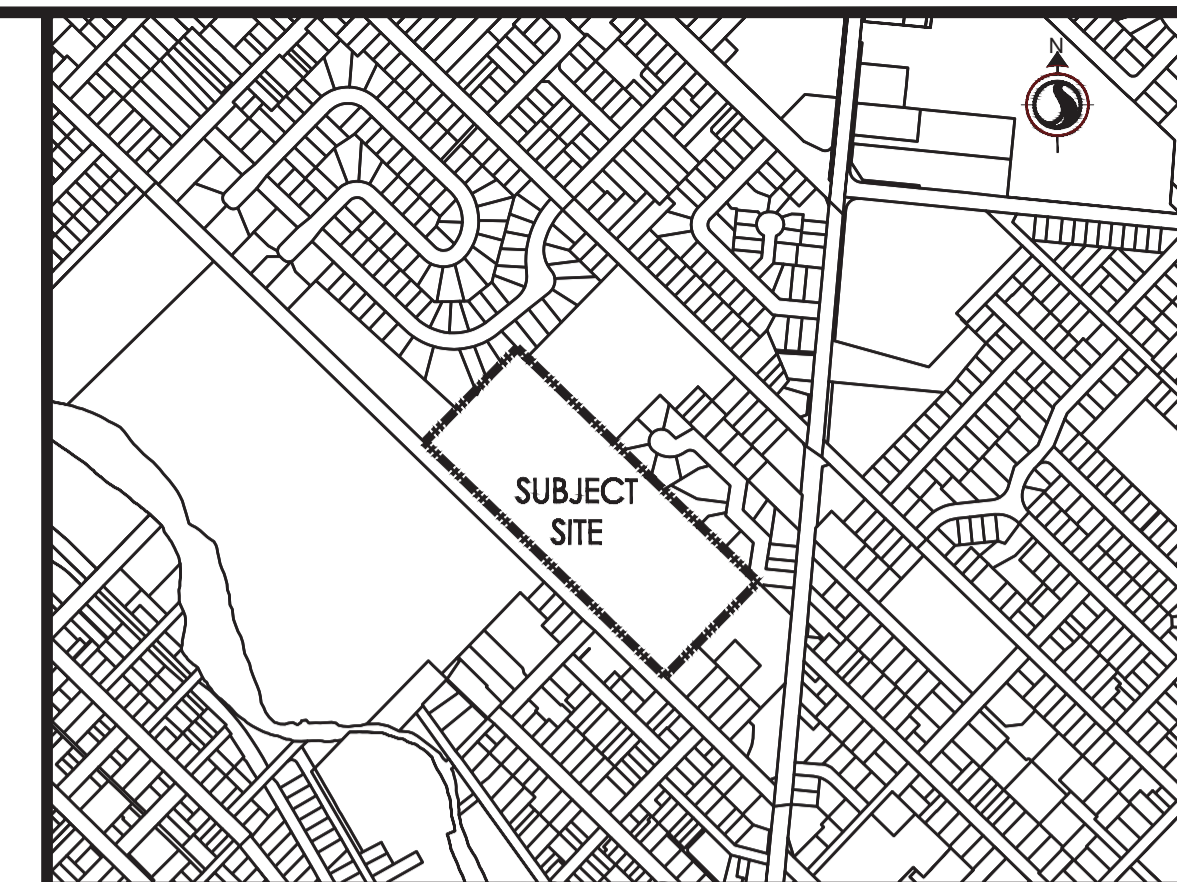
A-D Engineering Group Ltd.
Consulting Engineers
45 Eric T Smith Way - Unit 6, Aurora, Ontario, L4G 3Z8
905-898-3514 Free 1-855-998-3514 Fax 905-898-1998
Email: info@adengineering.ca www.adengineering.ca



56 QUEEN ST N, Bolton, Ontario, L7E 5B8
Phone: 905.857.8572
Fax: 905.857.0865
www.verticreteto.com

DESIGNED BY: N.PIMENTEL	WALL X-SECTIONS		
PENG APPROVAL:	PROJECT TYPE: VERTI-BLOCK	XS-02	REV. 1
DATE: 2024-03-26	SCALE: N.T.S.		

CAD FILE: C:\Users\Nicho\Documents\Projects\2023\2023-VC-228 - Guelph General Hospital -Stamped_REV.01.dwg



KEY PLAN NOTES

1. ALL DIMENSIONS ARE IN Mm
2. ALL ELEVATIONS & STATIONS ARE IN M UNLESS OTHERWISE NOTED

DISCLAIMER

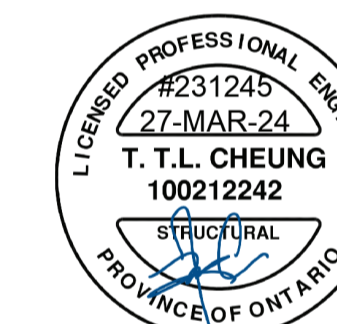
1. VERTI-CRETE OF TORONTO IS THE AUTHOR OF THESE DRAWINGS AND RETAIN ALL COMMON LAW, STATUTORY, AND OTHER RESERVED RIGHTS INCLUDING THE COPYRIGHT.
2. LIMITED LICENSE IS GRANTED TO COPY, REPRODUCE, OR MODIFY THE DETAILS TO PREPARE CONSTRUCTION DOCUMENTS VERTI-CRETE FENCES AND RETAINING WALLS.
3. VERTI-CRETE OF TORONTO MAKES NO WARRANTIES, EITHER EXPRESSED OR IMPLIED, OF MERCHANTABILITY OR FITNESS FOR ANY PARTICULAR PURPOSE, AND ACCEPTS NO RESPONSIBILITY FOR THE ACCURACY, SUITABILITY, OR COMPLETENESS OF INFORMATION CONTAINED HEREIN.

No.	REVISIONS	DATE	BY	REVIEWED
0	FIRST SUBMISSION	2024-01-15	N.P.	A.D. ENG.
1	SECOND SUBMISSION	2024-03-26	N.P.	A.D. ENG.

REFERENCE DRAWINGS

TITLE	JOB NO.	Rev. NO.	DATE
ISSUED FOR SPA SUBMISSION	140022022	6	2024-01-15

STAMP



PROJECT NUMBER ~ SITE ADDRESS

2023-VC-228 - GUELPH GENERAL HOSPITAL - STAMPED_REV.01

A-D Engineering Group Ltd.
 Consulting Engineers
 45 Eric T Smith Way - Unit 6, Aurora, Ontario, L4G 3Z8
 905-898-3514 Free 1-855-998-3514 Fax 905-898-1998
 Email: info@adengineering.ca www.adengineering.ca



56 QUEEN ST N, Bolton, Ontario, L7E 5B8
 Phone: 905.857.8572
 Fax: 905.857.0865
 www.verticreteto.com

DESIGNED BY: N.PIMENTEL

PENG APPROVAL:

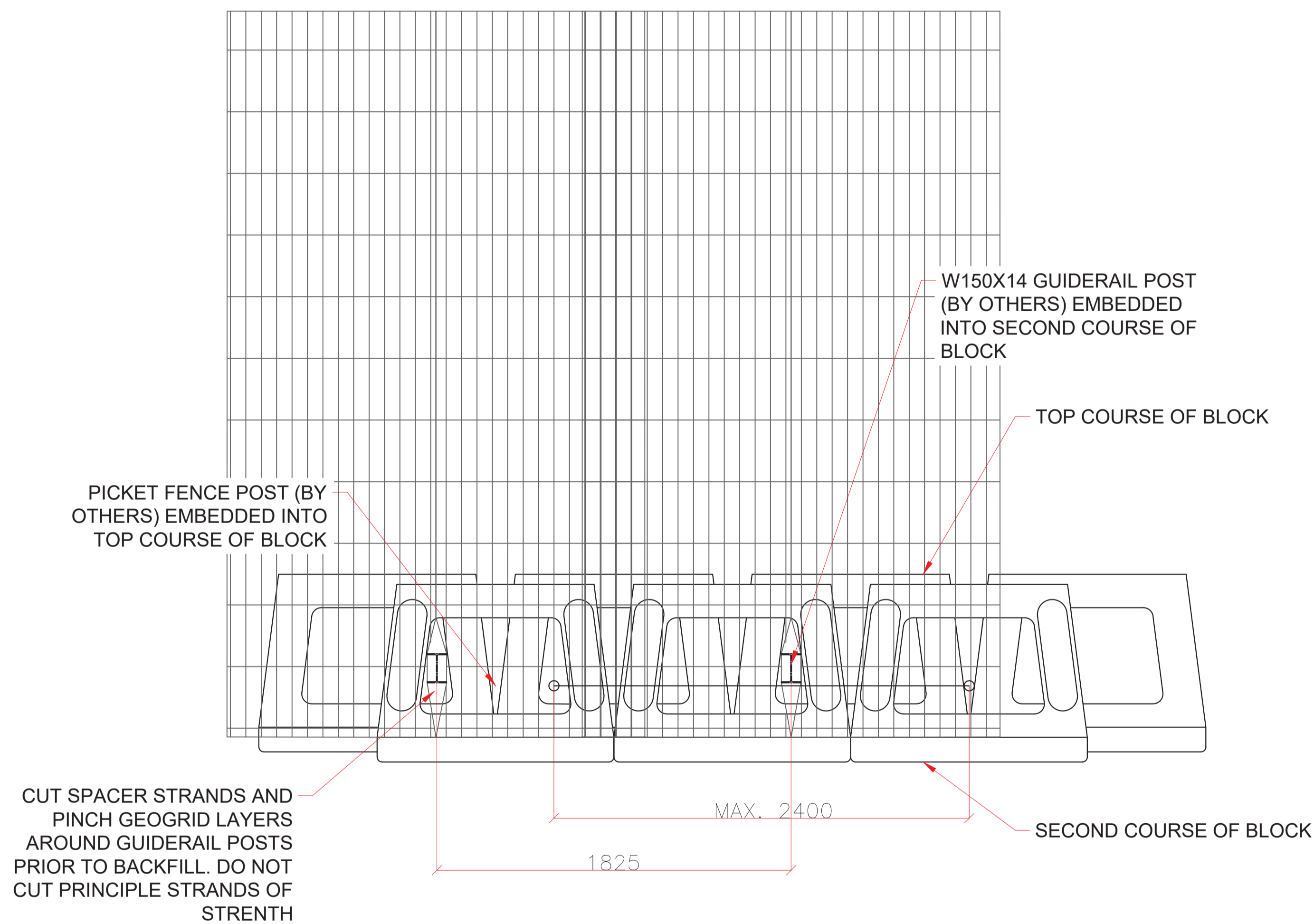
WALL X-SECTIONS

PROJECT TYPE:
VERTI-BLOCK
DATE: 2024-03-26

SCALE: N.T.S.

XS-03

REV. **1**



VERTI-BLOCK PLAN DETAIL

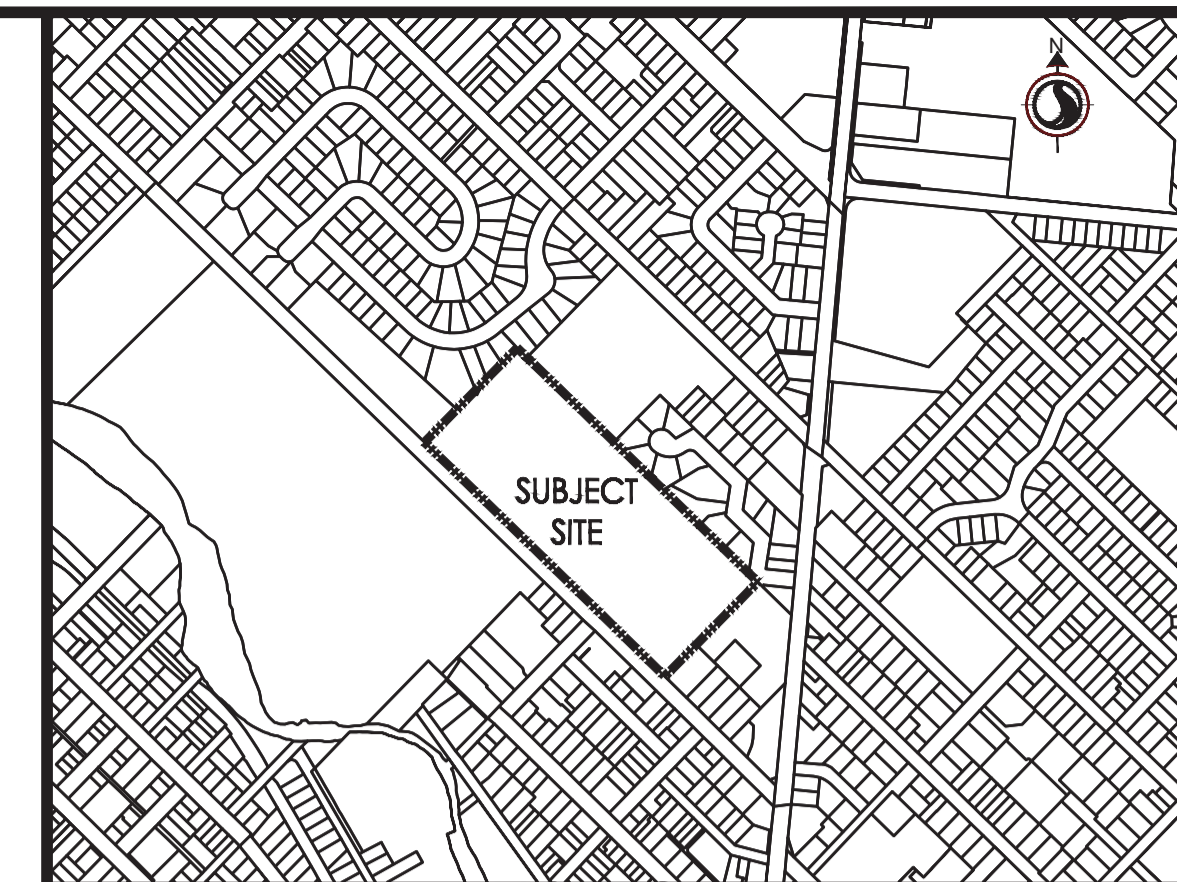
VERTI-BLOCK RETAINING WALL SYSTEMS

1. RETAINING WALL TO BE USED AGAINST ENGINEERED FILL MATERIAL IN ACCORDANCE TO PROJECT DOCUMENTS.
2. EXCAVATIONS IN ACCORDANCE WITH APPLICABLE OCCUPATIONAL HEALTH AND SAFETY ACT REGULATIONS.
3. RETAINING WALLS TO BE VERTI-BLOCK SYSTEM (COLOUR NATURAL GREY) WITH APPROXIMATE DIMENSIONS OF STANDARD VERTI-BLOCK UNIT:
 LENGTH = 1220mm
 WIDTH = 915mm
 HEIGHT = 610mm
4. WALL SYSTEMS TO BE INSTALLED IN STRICT ACCORDANCE WITH MANUFACTURER'S SPECIFICATION.
5. FIRST COURSE OF BLOCKS TO BE FOUNDED ON MINIMUM 500mm OF GRANULAR "A" BASE MATERIAL COMPACTED TO 98% SPDD OVER UNDISTURBED NATIVE SOIL OR AS NOTED ON DRAWINGS.
6. WHERE REQUIRED, BACKFILL MATERIAL IS TO BE PLACED AND COMPACTED IN LAYERS NOT EXCEEDING 200mm IN THICKNESS. REQUIRED COMPACTION: 98% OF THE STANDARD PROCTOR DENSITY OF THE MATERIAL.
7. THE FOUNDATIONS HAVE BEEN DESIGNED FOR A REQUIRED SLS BEARING CAPACITY OF 100 kPa (2000 psf) TO BE CONFIRMED BY GEOTECHNICAL ENGINEER. FOUND ALL FOUNDATIONS ON NATURAL UNDISTURBED INORGANIC SOIL.
8. A SOILS CONSULTANT SHALL APPROVE ON SITE THE ASSIGNED SAFE NET BEARING PRESSURE FOR EACH FOOTING. IF THE SAFE NET BEARING PRESSURE USED FOR DESIGN IS NOT APPROVED, ENGINEER TO BE NOTIFIED FOR REVISION OF RETAINING WALL DESIGN.
9. ASSUMED SOIL PROPERTIES (TO BE CONFIRMED AND APPROVED BY SOILS CONSULTANT):

INTERNAL FRICTION ANGLE = 30°
 UNIT WEIGHT OF SOIL (DRAINED) = 20kN/m (128pcf)
 ACTIVE PRESSURE COEFFICIENT (Ka) = 0.28 (LEVEL BACKSLOPE)

10. DESIGN SURCHARGE = 12 kPa (UNLESS NOTED OTHERWISE)
11. GEOGRID SHALL BE STRATAGRID SG200 OR HIGHER FOR RETAINING WALL, UNLESS NOTED OTHERWISE ON DRAWINGS. GRID SHOULD BE EMBEDDED FULLY TO FRONT FACE OF BLOCK. SLOPE REINFORCEMENT BY OTHERS.
12. CONTRACTOR IS RESPONSIBLE FOR RETAINING WALL LAYOUT.
13. RETAINING WALLS HAVE DESIGNED IN ACCORDANCE w/ LATEST EDITION OF ONTARIO BUILDING CODE, ONTARIO REG. 332/12 AND THE DESIGN MANUAL FOR SEGMENTAL RETAINING WALLS, 3rd EDITION BY THE NATIONAL CONCRETE MASONRY ASSOCIATION.
14. RETAINING WALLS HAVE BEEN DESIGNED TO BE ADEQUATE FOR EXTERNAL AND INTERNAL STABILITY. WITH CONSIDERATION TO DRAINED SOIL CONDITION, LIVE LOAD SURCHARGE = 12 kPa .

 GLOBAL STABILITY IS OUTSIDE THE AREA OF EXPERTISE FOR A-D ENGINEERING GROUP LTD. AND SHALL BE CHECKED BY A LICENSED GEOTECHNICAL ENGINEER.
15. REFER TO OPSD 3121.150 "WALLS RETAINING, BACKFILL MINIMUM GRANULAR REQUIREMENTS" FOR BACKFILL REQUIREMENTS.



KEY PLAN **NOTES**

1. ALL DIMENSIONS ARE IN Mm
2. ALL ELEVATIONS & STATIONS ARE IN M UNLESS OTHERWISE NOTED

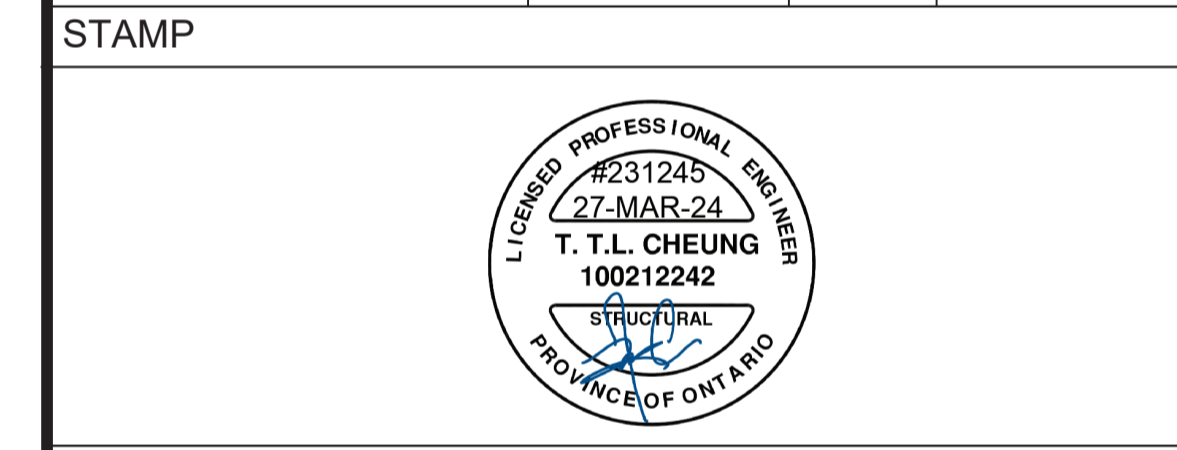
DISCLAIMER

1. VERTI-CRETE OF TORONTO IS THE AUTHOR OF THESE DRAWINGS AND RETAIN ALL COMMON LAW, STATUTORY, AND OTHER RESERVED RIGHTS INCLUDING THE COPYRIGHT.
2. LIMITED LICENSE IS GRANTED TO COPY, REPRODUCE, OR MODIFY THE DETAILS TO PREPARE CONSTRUCTION DOCUMENTS VERTI- CRETE FENCES AND RETAINING WALLS.
3. VERTI-CRETE OF TORONTO MAKES NO WARRANTIES, EITHER EXPRESSED OR IMPLIED, OF MERCHANTABILITY OR FITNESS FOR ANY PARTICULAR PURPOSE, AND ACCEPTS NO RESPONSIBILITY FOR THE ACCURACY, SUITABILITY, OR COMPLETENESS OF INFORMATION CONTAINED HEREIN.

No.	REVISIONS	DATE	BY	REVIEWED
0	FIRST SUBMISSION	2024-01-15	N.P.	A.D. ENG.
1	SECOND SUBMISSION	2024-03-26	N.P.	A.D. ENG.

REFERENCE DRAWINGS

TITLE	JOB NO.	Rev. NO.	DATE
ISSUED FOR SPA SUBMISSION	140022022	6	2024-01-15



PROJECT NUMBER ~ SITE ADDRESS

2023-VC -228 -GUELPH GENERAL HOSPITAL -STAMPED_REV.01

A-D Engineering Group Ltd.
 Consulting Engineers
 45 Eric T Smith Way - Unit 6, Aurora, Ontario, L4G 3Z8
 905-898-3514 Free 1-855-998-3514 Fax 905-898-1998
 Email: info@adengineering.ca www.adengineering.ca

VERTI-CRETE

SABSTONE of TORONTO

56 QUEEN ST N, Bolton, Ontario, L7E 5B8
 Phone: 905.857.8572
 Fax: 905.857.0865
 www.verticreteto.com

DESIGNED BY: N.PIMENTEL	WALL X-SECTIONS	PROJECT TYPE:	XS-04	REV.
PENG APPROVAL:		VERTI-BLOCK		1
DATE: 2024-03-26	SCALE: N.T.S.			

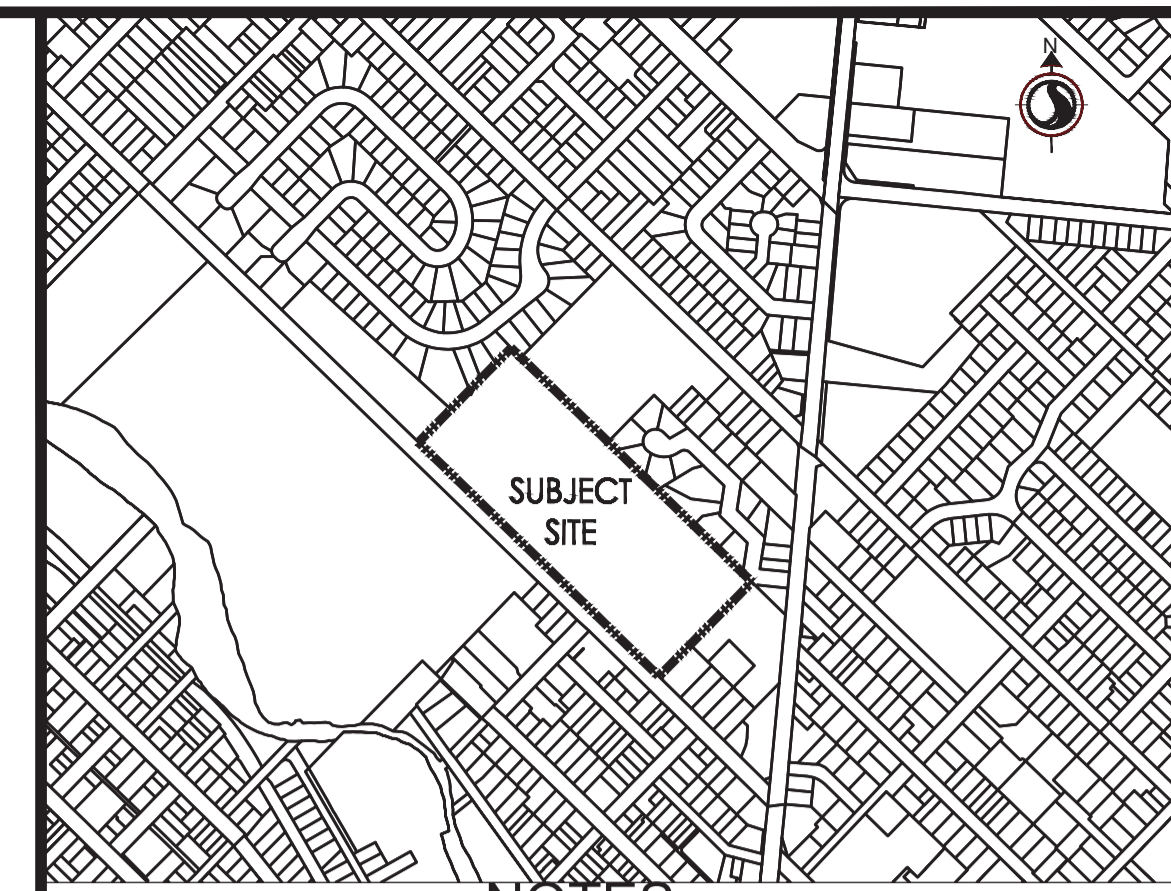
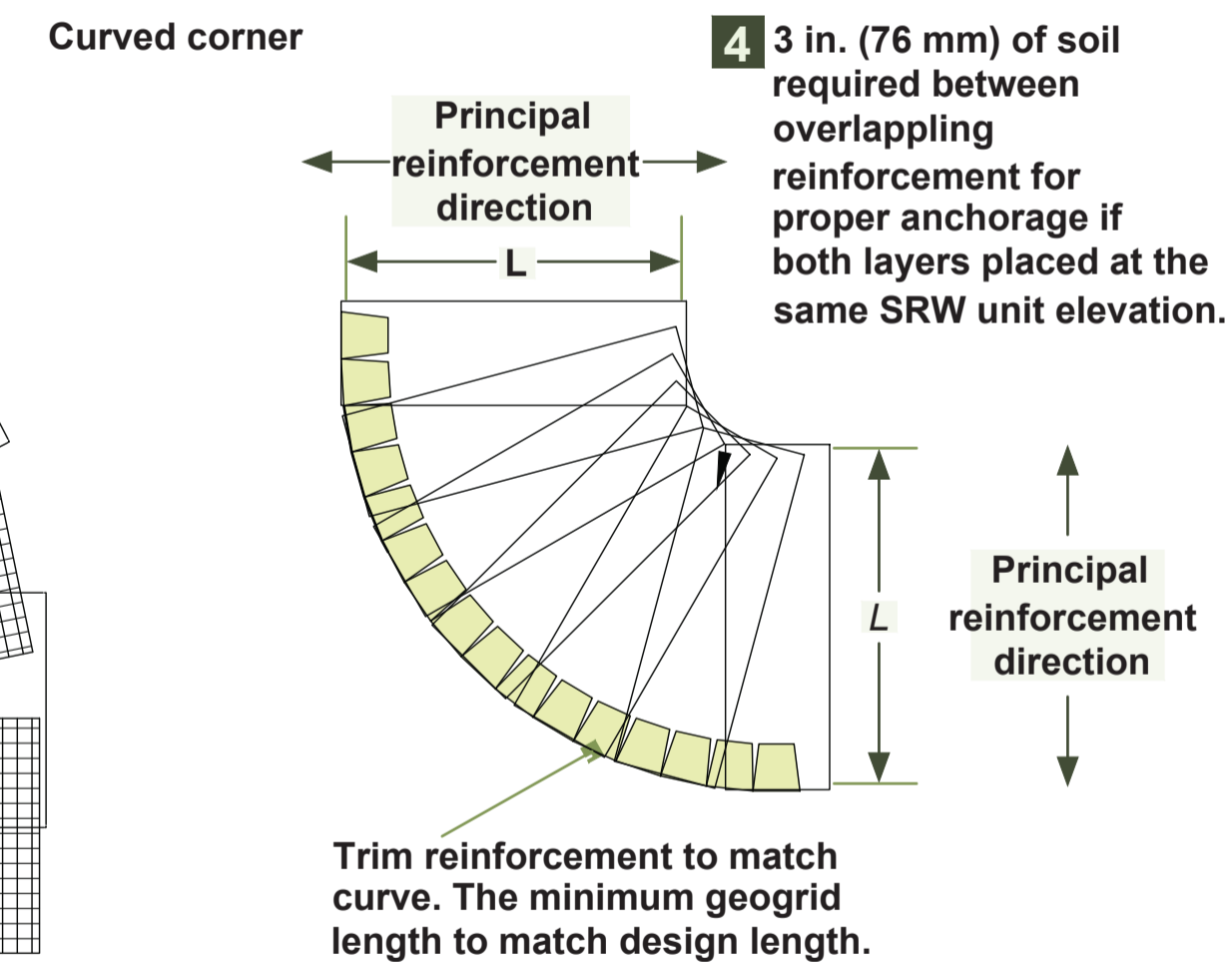
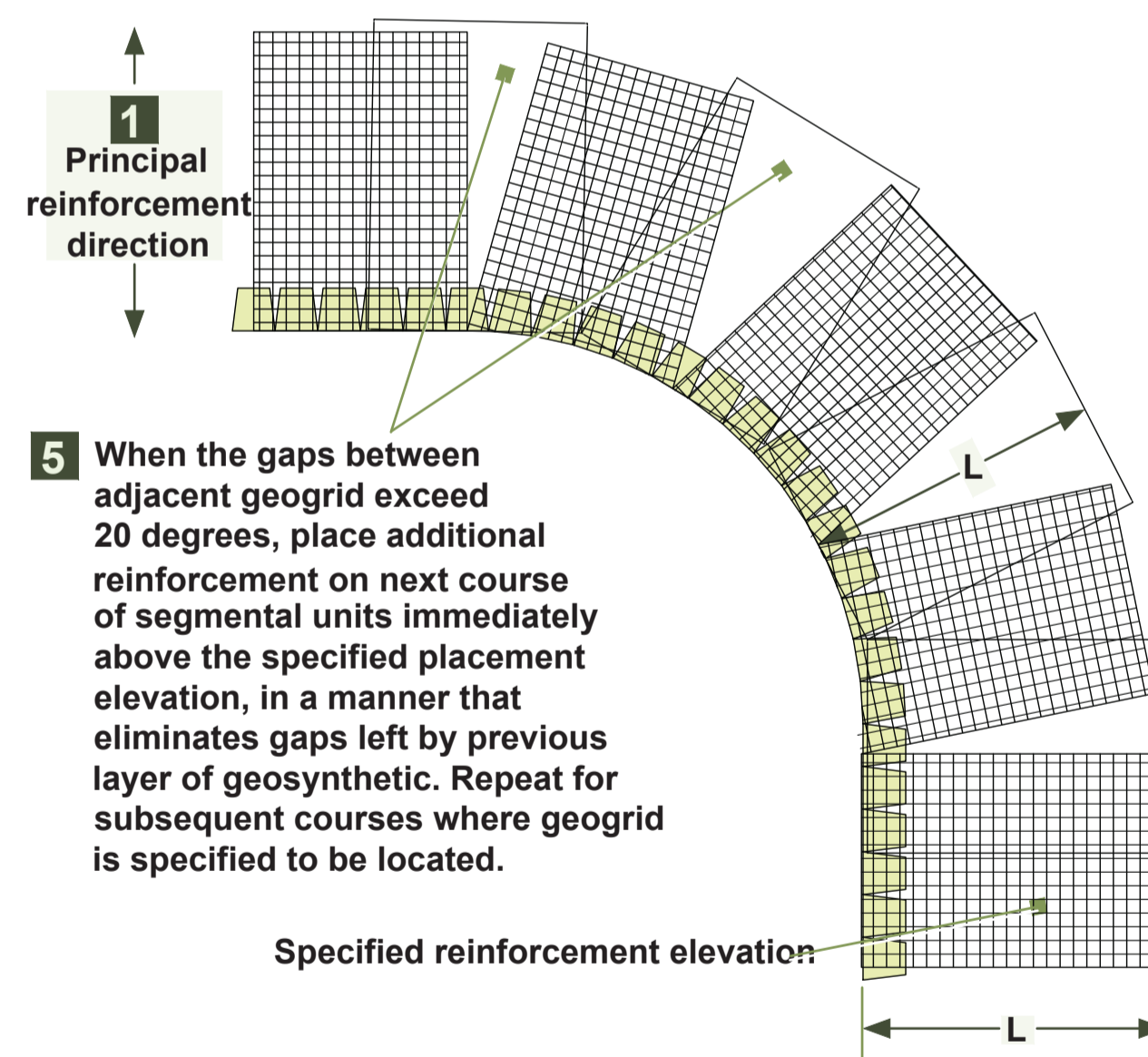
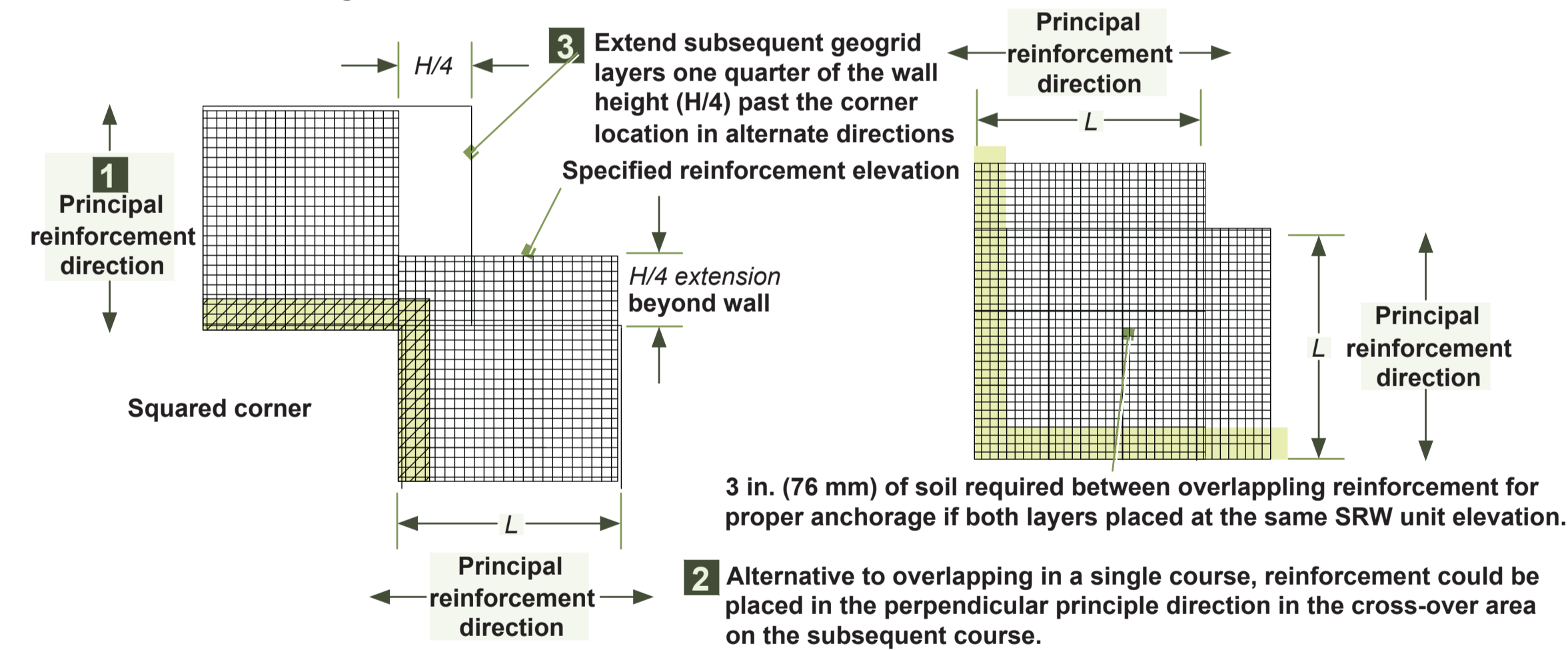
CAD FILE: c:\Users\jichao\Documents\Projects\2023\2023-VC-228 - Guelph General Hospital -Stamped_REV.01.dwg

PROPER ORIENTATION OF GEOGRID AND PLACEMENT

- **CUT GEOSYNTHETIC REINFORCEMENT TO DESIGN LENGTH (L) AS SHOWN ON THE PLANS AND INSTALL WITH DESIGN STRENGTH DIRECTION PERPENDICULAR TO THE WALL FACE. BRING GEOSYNTHETIC TO THE FRONT OF THE BLOCK AND SECURE FOLLOWING MANUFACTURER'S DETAILS WITH THE UPPER BLOCK. TYPICALLY THE GEOGRID SHOULD EXTEND TO NO LESS THAN 1 in. (203 mm) FROM THE FACE OF THE WALL.**
- **FOR STRAIGHT WALLS, PLACEMENT OF ADJACENT SHEETS OF REINFORCEMENT SHOULD BE SIDE-BY-SIDE WITHOUT ANY OVERLAP.**
- **FOR WALLS WITH CORNERS OR CURVES AS SHOWN BELOW, THE FOLLOWING ARE RECOMMENDED PRACTICES FOR GEOGRID PLACEMENT:**
 - FOR OUTSIDE CORNERS, TO AVOID OVERLAPPING GEOGRID LAYERS, GEOGRIDS SHOULD BE STAGGERED BY ONE COURSE ON EITHER SIDE OF THE CORNER, WEAVING THE STRONG DIRECTION FROM BOTTOM TO TOP OF WALL.
 - FOR INSIDE CORNERS, EXTEND THE GEOGRID LAYER INTO THE CORNER FROM ONE SIDE A DISTANCE EQUAL TO 25% OF THE TOTAL WALL HEIGHT. ALTERNATE EXTENDED GEOGRID LAYER FROM SIDE TO SIDE PER COURSE TO CREATE A GEOGRID WEAVE AS THE WALL IS BUILT.
 - FOR OUTSIDE CURVES, WHERE GEOGRID TAILS OVERLAP NATURALLY, PLACE ROUGHLY 3 in (75 mm) OF GRAVEL FILL OR REINFORCED SOIL BETWEEN THE OVERLAPPING LAYERS.
 - FOR INSIDE CURVES, WHERE GEOGRID LAYERS FAN APART AND THE GAP ANGLE EXCEEDS 20 DEGREES, PLACE A SECONDARY, EQUAL LENGTH, LAYER OF GEOGRID ON THE NEXT COURSE ABOVE THE FANNED GAP.

Notes: Alternate placement of reinforcement extension on specified reinforcement elevations.

L: □ Geosynthetic reinforcement design length
H: □ Total finished wall height



KEY PLAN NOTES
 1. ALL DIMENSIONS ARE IN Mm
 2. ALL ELEVATIONS & STATIONS ARE IN M UNLESS OTHERWISE NOTED

DISCLAIMER

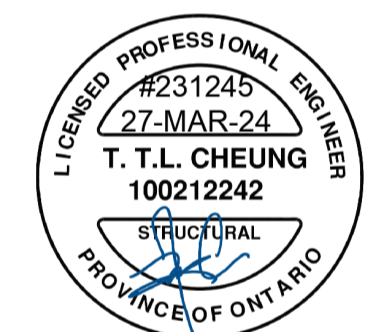
1. VERTI-CRETE OF TORONTO IS THE AUTHOR OF THESE DRAWINGS AND RETAIN ALL COMMON LAW, STATUTORY, AND OTHER RESERVED RIGHTS INCLUDING THE COPYRIGHT.
2. LIMITED LICENSE IS GRANTED TO COPY, REPRODUCE, OR MODIFY THE DETAILS TO PREPARE CONSTRUCTION DOCUMENTS VERTI-CRETE FENCES AND RETAINING WALLS.
3. VERTI-CRETE OF TORONTO MAKES NO WARRANTIES, EITHER EXPRESSED OR IMPLIED, OF MERCHANTABILITY OR FITNESS FOR ANY PARTICULAR PURPOSE, AND ACCEPTS NO RESPONSIBILITY FOR THE ACCURACY, SUITABILITY, OR COMPLETENESS OF INFORMATION CONTAINED HEREIN.

No.	REVISIONS	DATE	BY	REVIEWED
0	FIRST SUBMISSION	2024-01-15	N.P.	A.D. ENG.
1	SECOND SUBMISSION	2024-03-26	N.P.	A.D. ENG.

REFERENCE DRAWINGS

TITLE	JOB NO.	Rev. NO.	DATE
ISSUED FOR SPA SUBMISSION	140022022	6	2024-01-15

STAMP



PROJECT NUMBER ~ SITE ADDRESS

2023-VC-228 - GUELPH GENERAL HOSPITAL - STAMPED_REV.01

A-D Engineering Group Ltd.
 Consulting Engineers
 45 Eric T Smith Way - Unit 6, Aurora, Ontario, L4G 3Z8
 905-898-3514 Free 1-855-998-3514 Fax 905-898-1998
 Email: info@adengineering.ca www.adengineering.ca



56 QUEEN ST N, Bolton, Ontario, L7E 5B8
 Phone: 905.857.8572
 Fax: 905.857.0865
 www.verticreteto.com

DESIGNED BY: N.PIMENTEL	GEO-GRID INSTALLATION		
PENG APPROVAL:			
PROJECT TYPE: VERTI-BLOCK	XS-05	REV. 1	
DATE: 2024-03-26	SCALE: N.T.S.		

CAD FILE: C:\Users\Nicho\Documents\Projects\2023\2023-VC-228 - Guelph General Hospital - Stamped_REV.01.dwg