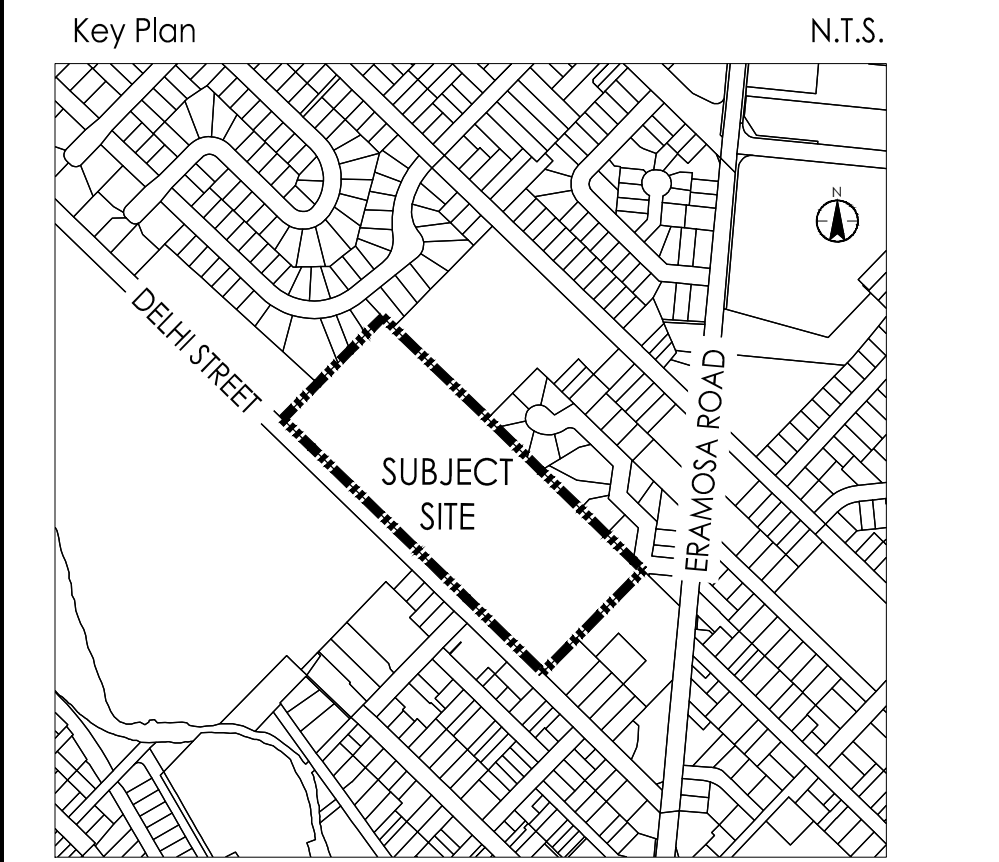


**Liability Note**

The Contractor shall verify and be responsible for all dimensions. DO NOT scale the drawing - any errors or omissions shall be reported to Stantec without delay.



**Legend**

	SITE BOUNDARY		PROPOSED DECIDUOUS TREE
	EXISTING TREE TO REMOVE		PROPOSED SHRUB
	EXISTING TREE TO REMAIN		PROPOSED ORNAMENTAL GRASSES
			PROPOSED PERENNIALS
			PROPOSED SOD
			PROPOSED SIGN

**Notes**

- THIS IS A COMPLETED PLAN AND SHOULD NOT BE CONSIDERED A PLAN OF SURVEY.
- ONTARIO BASE MAPPING USED FOR AREAS AND DIMENSIONS. LEGAL PLAN REQUIRED FOR PRECISE CALCULATIONS.
- CONCEPT PLAN IS PRELIMINARY AND HAS NOT BEEN REVIEWED BY THE CITY.
- ZONING BY LAW AMENDMENT MAY BE REQUIRED.

Revision	By	Appd.	YY.MM.DD
10. ISSUED FOR TENDER	EA	JNV	24.06.07
9. ISSUED FOR PRE-TENDER	EA	JNV	24.05.27
8. ISSUED FOR SPA SUBMISSION	EA	JNV	24.04.22
7. ISSUED FOR STAGE 2.3 MOH SUBMISSION	EA	JNV	24.02.23
6. ISSUED FOR SPA SUBMISSION	EA	JNV	24.01.15
5. ISSUED FOR COSTING AND GGH REVIEW	JNV	JNV	23.12.21

File Name:	RT	MD	RT	23.03.03
14002022_Landscape_ph1	Dwn.	Chkd.	Dsgn.	YY.MM.DD

**Permit-Seal**

**Client/Project**

GUELPH GENERAL HOSPITAL  
EMERGENCY MENTAL HEALTH AND ADDICTIONS SERVICES RELOCATION AND EMERGENCY DEPARTMENT EXPANSION  
Guelph, ON Canada

**Title**

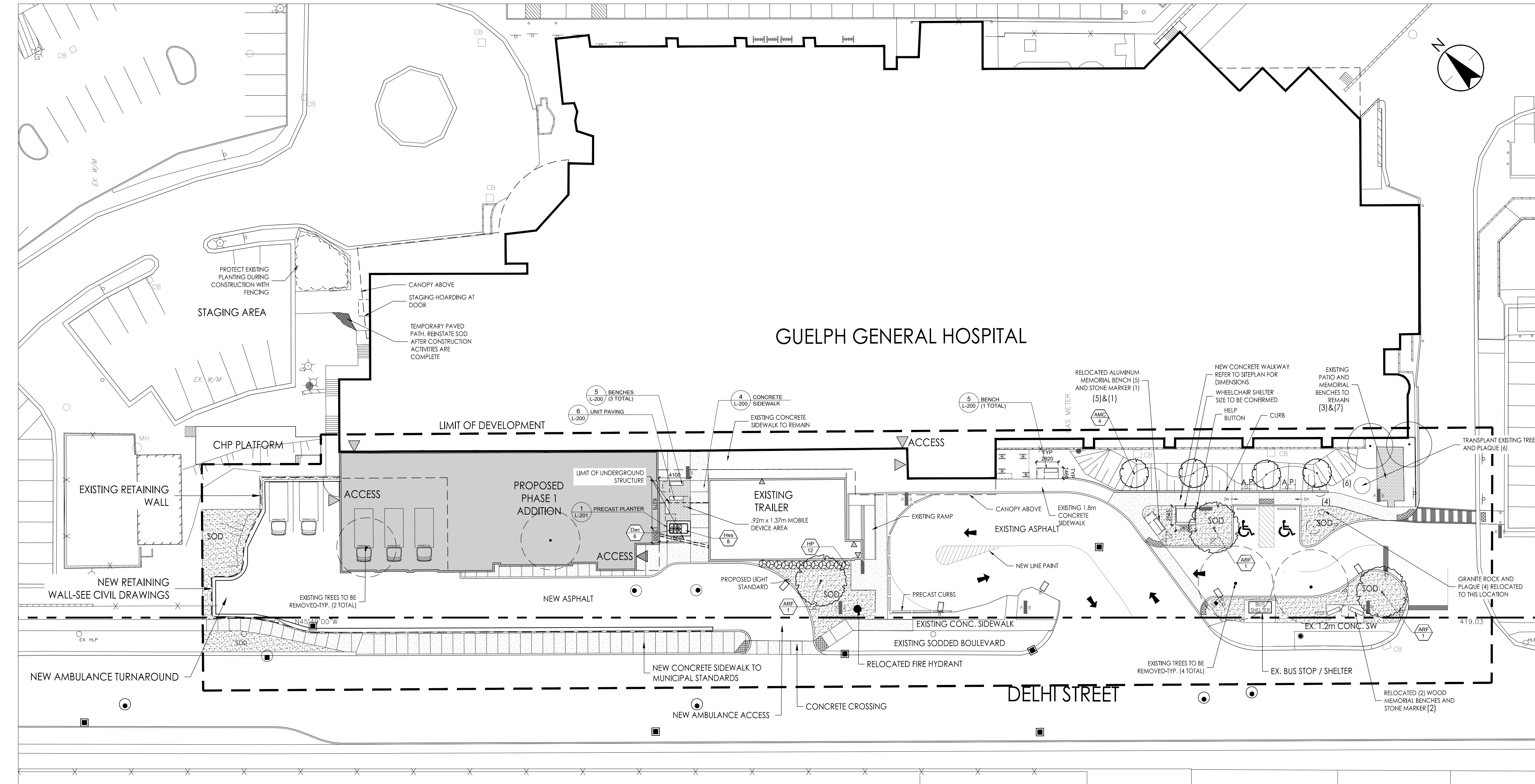
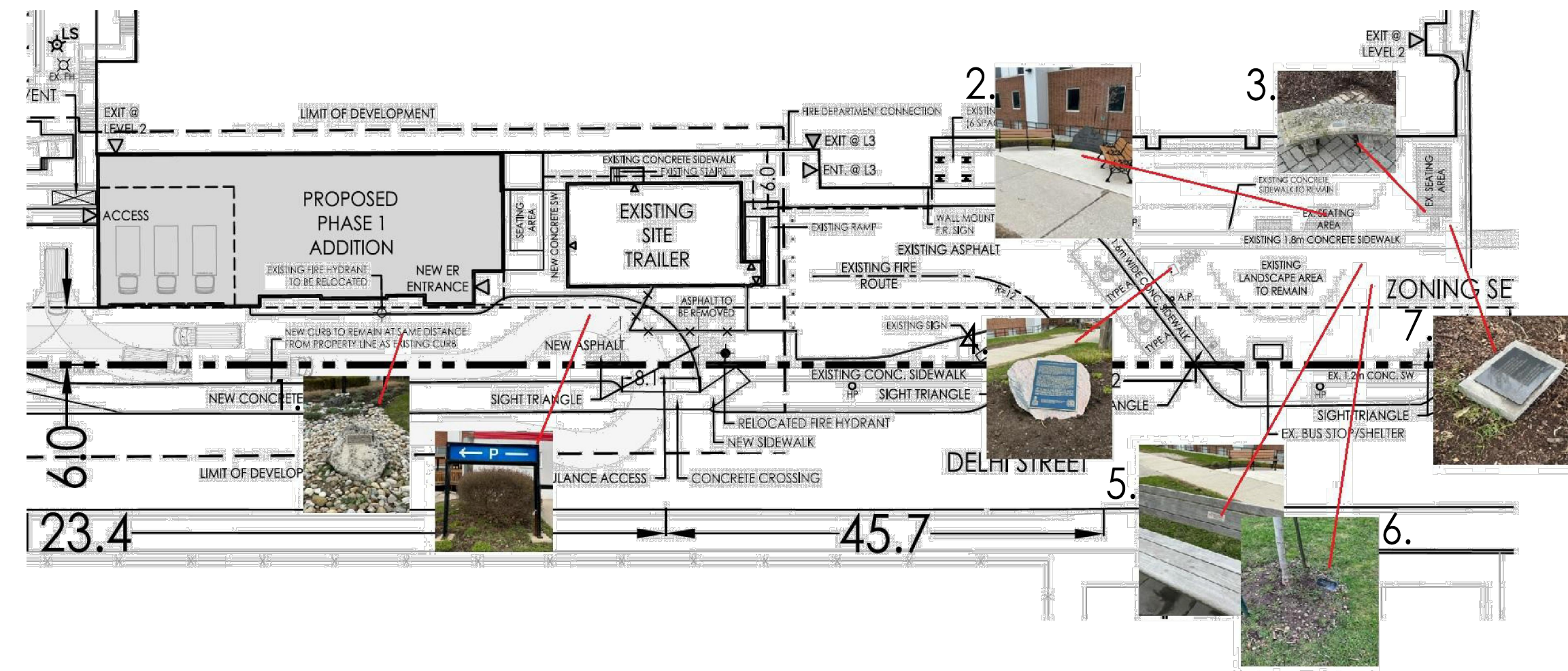
LANDSCAPE PLAN  
PHASE 1  
SP23-015S

Project No.	Scale	HORZ	1 : 300
14002022	3 0 6m		
Drawing No.	Sheet	Revision	
L-100	1 of 3	0	

**Plant Schedule-Site**

Sym	Qty	Botanical Name	Common Name	CAL (mm)	HT (mm)	Root	Spacing	Remarks
<b>DECIDUOUS TREES:</b>								
ARF	3	<i>Acer rubrum</i> 'Red Sunset' (Franksred)	Red Sunset Maple	60		W.B.		
AMC	4	<i>Amelanchier canadensis</i>	Serviceberry	60		W.B.	Single stem	
<b>SHRUBS:</b>								
HP	12	<i>Hypericum prolificum</i>	Shrubby St. Johnswort		300	3 Gal.	1000 o.c.	
<b>ORNAMENTAL GRASSES:</b>								
Dec	6	<i>Deschampsia caespitosa</i>	Tufted Hair Grass			1 Gal.	600 o.c.	
<b>PERENNIALS:</b>								
Hes	8	<i>Heemerallis</i> 'Stella D'Oro'	Stella D'Oro Daylily			1 Gal.	450 o.c.	

Native	Drought
Y	Y
Y	Y
Y	Y
Y	Y
N	Y

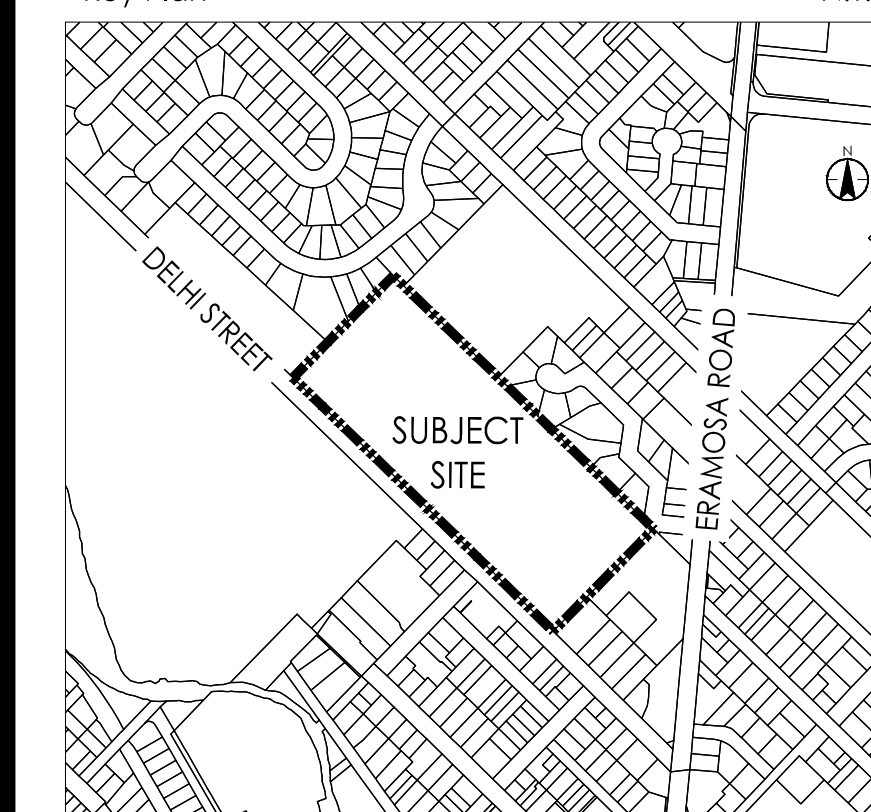


U:\14002022\14002022\_Landscape\14002022\_Landscape\_Ph1.dwg  
 2024-06-25 10:51 AM for: Andrew\_Emy

**Liability Note**

The Contractor shall verify and be responsible for all dimensions. Do NOT scale the drawing - any errors or omissions shall be reported to Stantec without delay.

**Key Plan**



**Legend**

■ ■ ■ ■ SITE BOUNDARY

**Notes**

- THIS IS A COMPILED PLAN AND SHOULD NOT BE CONSIDERED A PLAN OF SURVEY.
- ONTARIO BASE MAPPING USED FOR AREAS AND DIMENSIONS. LEGAL PLAN REQUIRED FOR PRECISE CALCULATIONS.
- CONCEPT PLAN IS PRELIMINARY AND HAS NOT BEEN REVIEWED BY THE CITY.
- ZONING BY LAW AMENDMENT MAY BE REQUIRED.

Revision	By	Appd.	YY.MM.DD
7. ISSUED FOR TENDER	EA	JNV	24.06.07
6. ISSUED FOR PRE-TENDER	EA	JNV	24.05.27
5. ISSUED FOR SPA SUBMISSION	EA	JNV	24.04.22
4. ISSUED FOR STAGE 2.3 MOH SUBMISSION	EA	JNV	24.02.23
3. ISSUED FOR SPA SUBMISSION	EA	JNV	24.01.15
2. ISSUED FOR COSTING AND GGH REVIEW	JNV	JNV	23.12.21

Issue

File Name:	RT	MD	RT	23.03.03
140022022_Landscape_ph1	Dwn.	Chkd.	Desgn.	YY.MM.DD

**Permit/Seal**

**Client/Project**

GUELPH GENERAL HOSPITAL

EMERGENCY MENTAL HEALTH AND ADDICTIONS SERVICES RELOCATION AND EMERGENCY DEPARTMENT EXPANSION

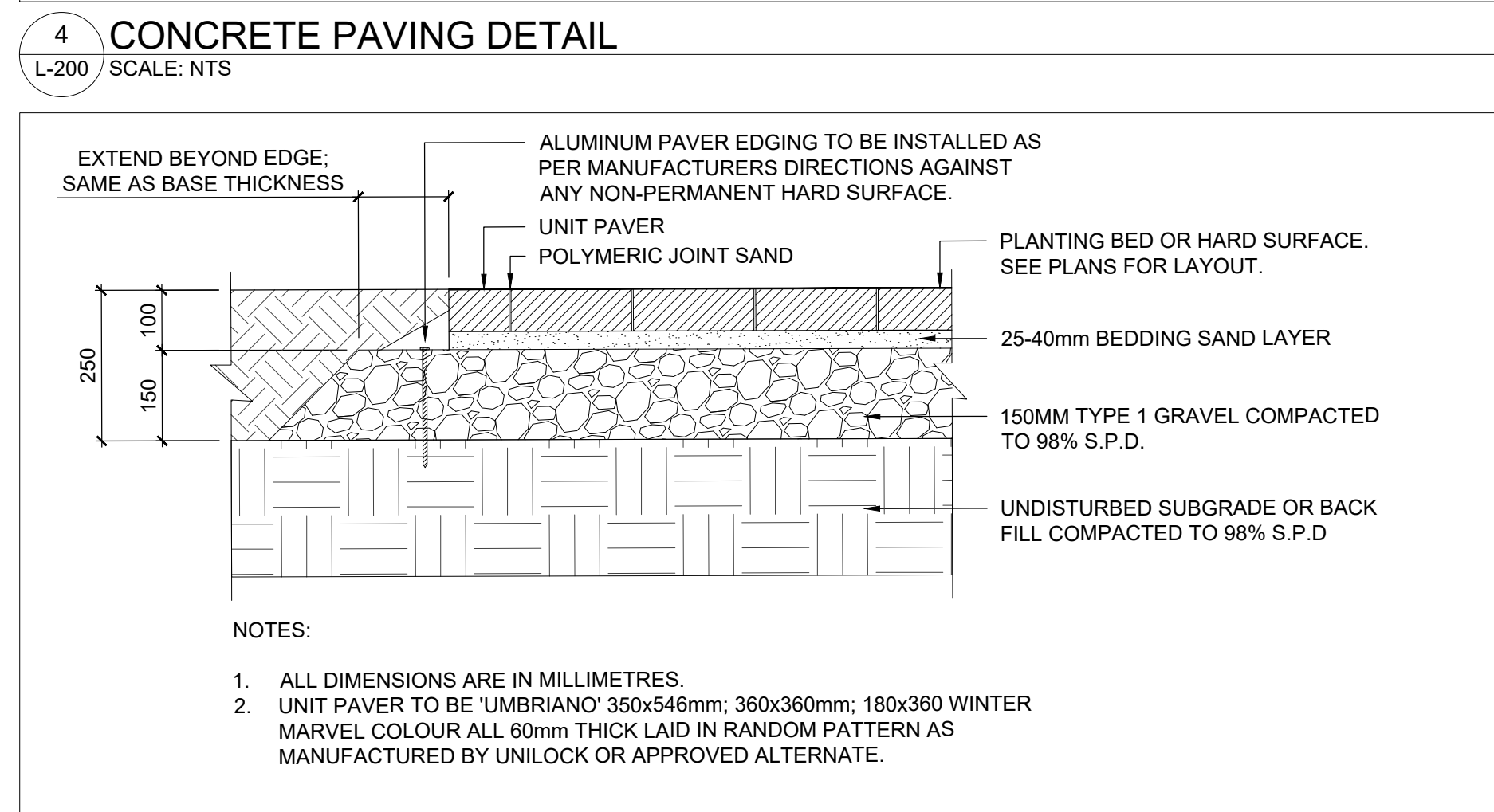
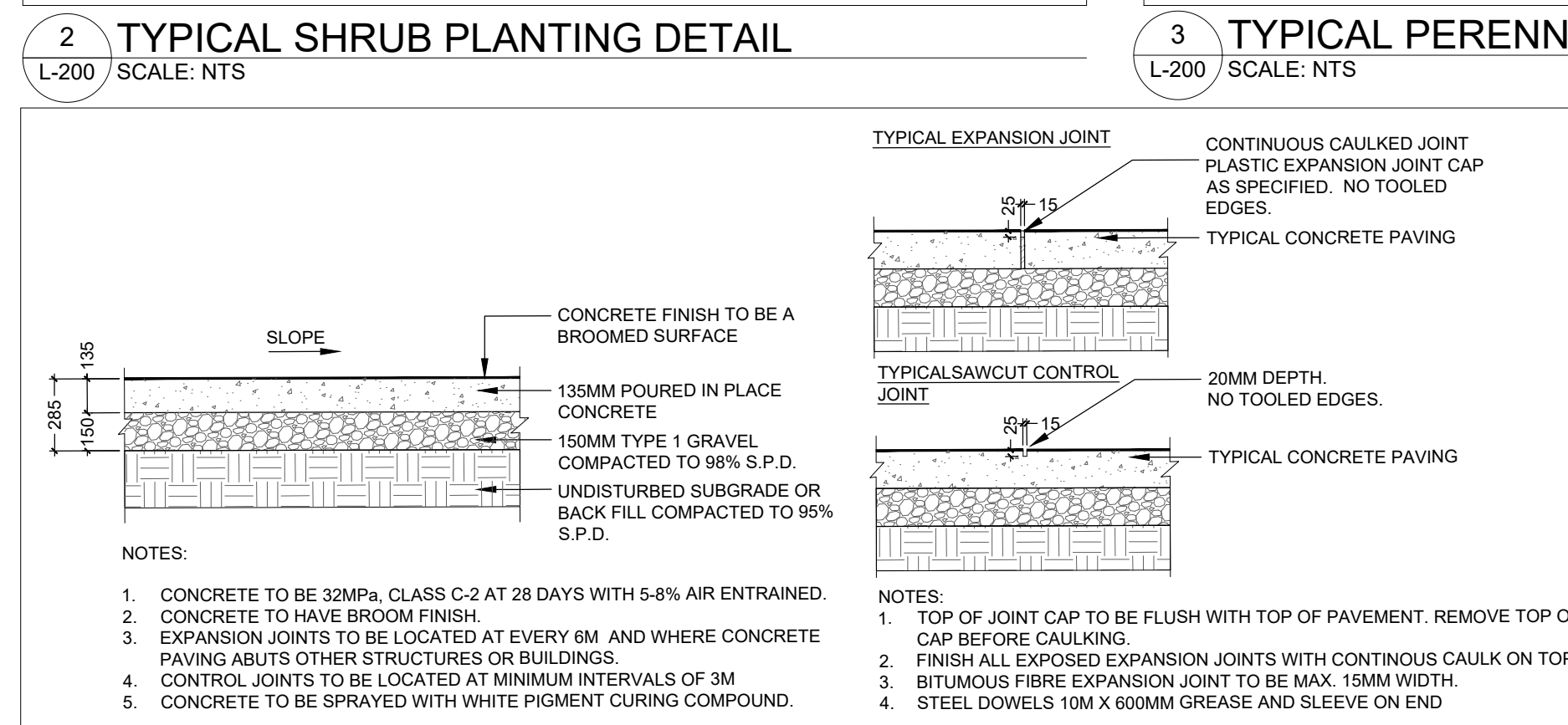
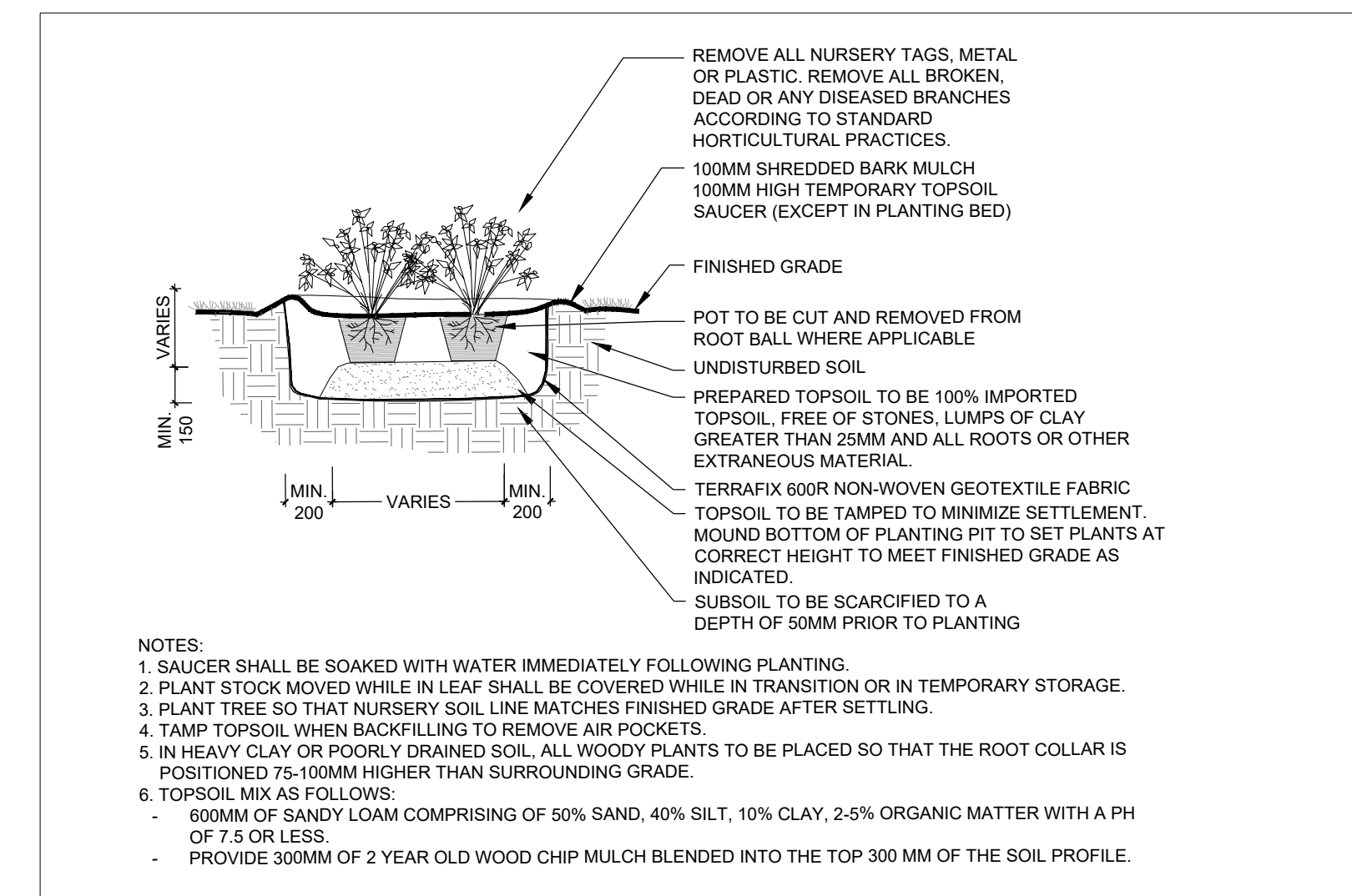
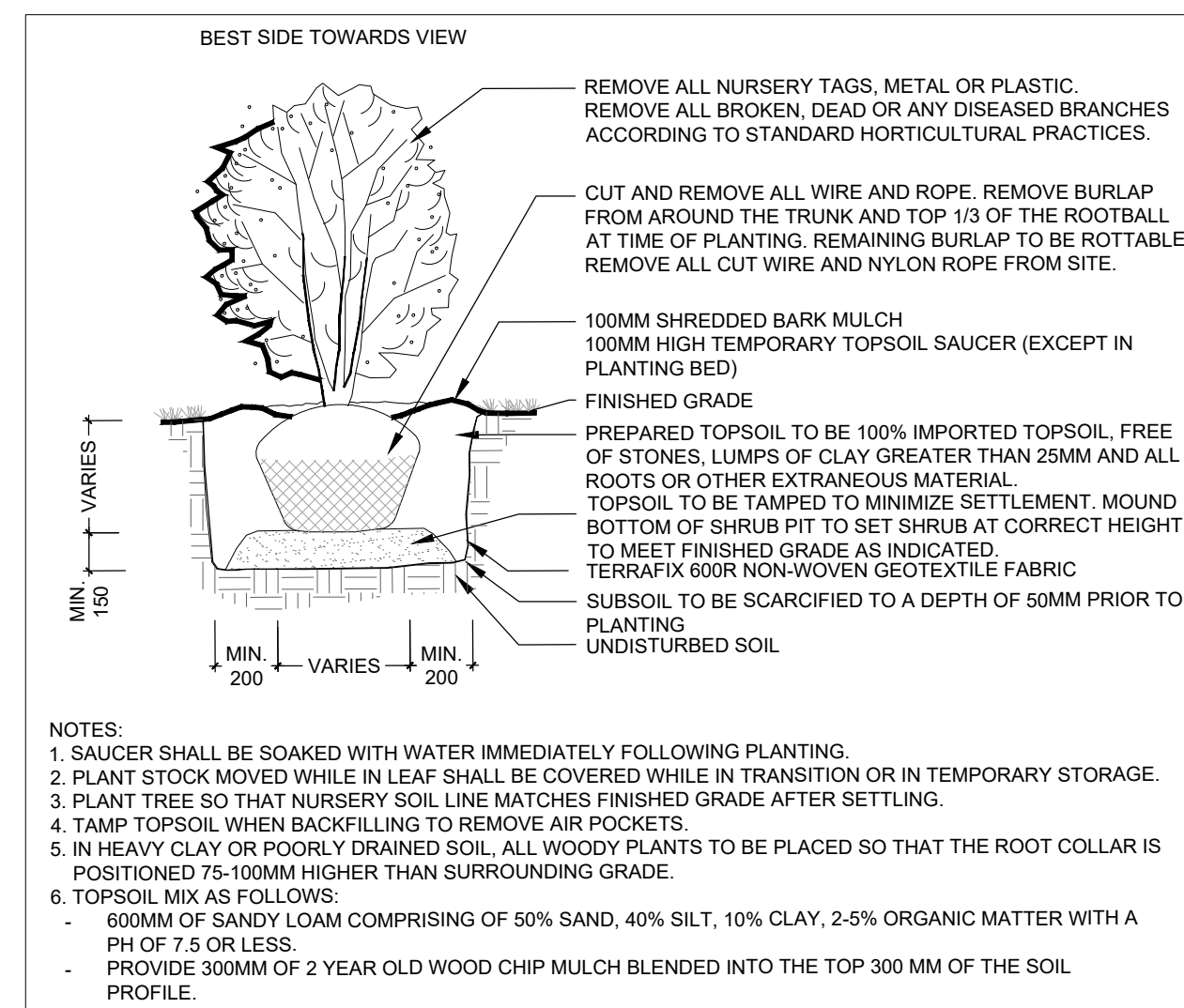
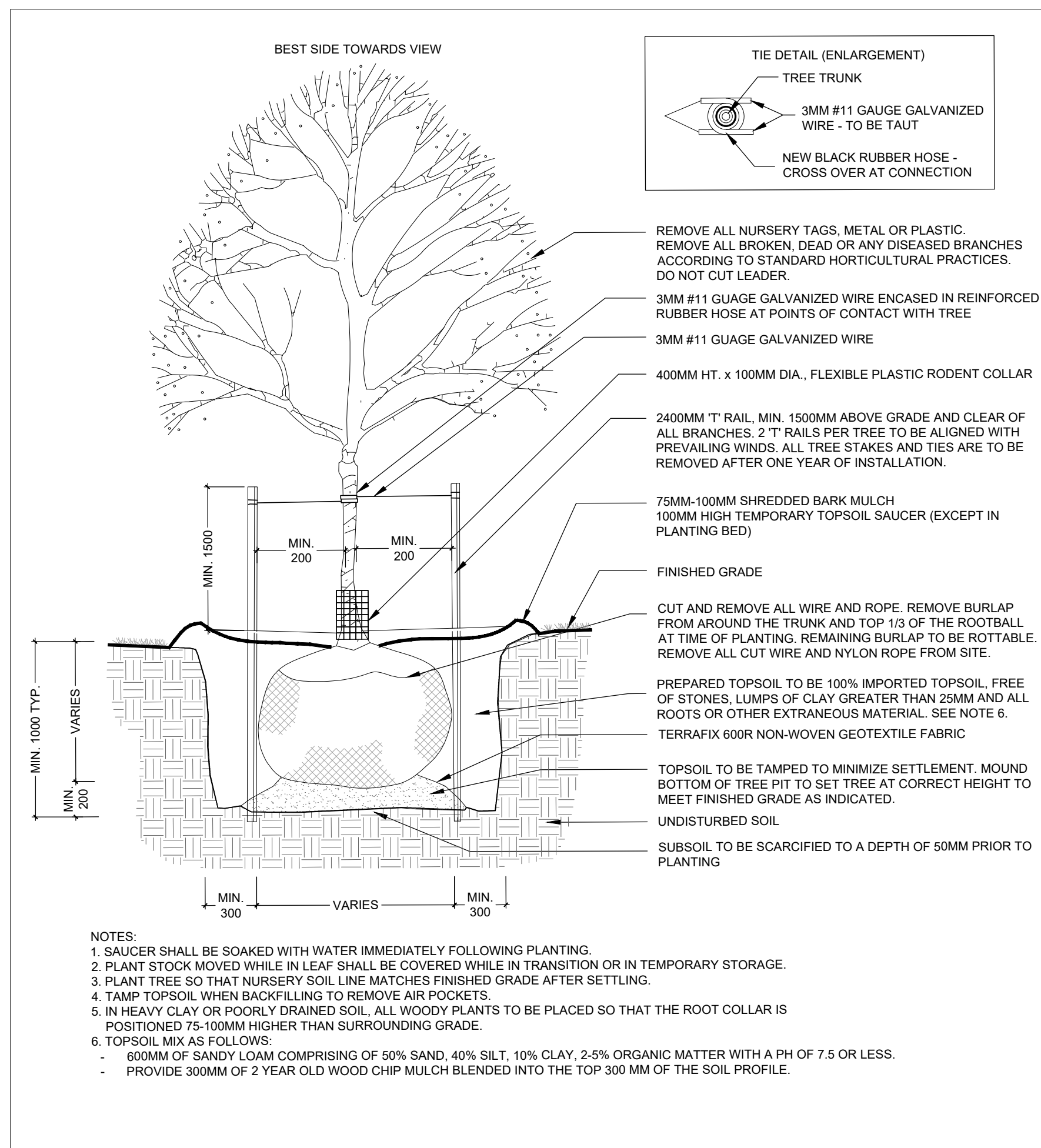
Guelph, ON Canada

**Title**

LANDSCAPE DETAILS  
PHASE 1  
SP23-0155

Project No. 140022022 Scale NOT TO SCALE

Drawing No. L-200 Sheet 2 of 3 Revision 0



**MBE-2300-00018**

**ICONIC**

**MATERIALS:** The legs and arms are aluminum castings. The boards are made from lpe wood. All brackets are made of steel.

**FINISH:** The Maglin Powdercoat System provides a durable finish on all aluminum castings. The wood boards are treated with penetrating sealers. The steel brackets are e-coated and powdercoated.

**INSTALLATION:** The bench is delivered pre-assembled. The legs have 7/16" holes for anchoring.

**TO SPECIFY:** Select MBE-2300-00018  
Choose: Powdercoat Color COLOUR TO BE GLOSS SILVER 14

HEIGHT: 33 1/4" (84.5cm) LENGTH: 70" (177.8cm) DEPTH: 25 1/2" (64.7cm) WEIGHT: 127 lbs (57.5kg)

**MAGLIN**  
Site Furniture

T 800 796 8608  
F 877 285 9193  
www.maglin.com  
sales@maglin.com

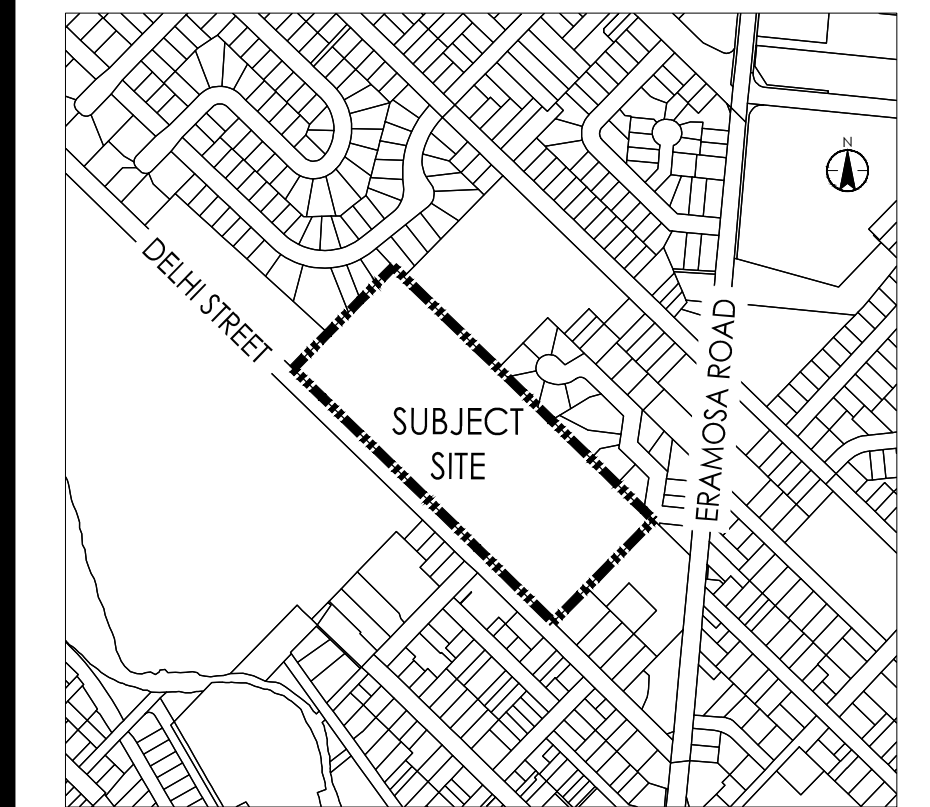
All drawings, specifications, design and details on this page remain the property of Maglin Site Furniture Inc. and may not be used without Maglin authorization.  
Details and specifications may vary due to continuing improvements of our products.



**Liability Note**

The Contractor shall verify and be responsible for all dimensions. DO NOT scale the drawing - any errors or omissions shall be reported to Stantec without delay.

**Key Plan**



N.T.S.

**Legend**

■■■■ SITE BOUNDARY

**Notes**

1. THIS IS A COMPILED PLAN AND SHOULD NOT BE CONSIDERED A PLAN OF SURVEY.
2. ONTARIO BASE MAPPING USED FOR AREAS AND DIMENSIONS. LEGAL PLAN REQUIRED FOR PRECISE CALCULATIONS.
3. CONCEPT PLAN IS PRELIMINARY AND HAS NOT BEEN REVIEWED BY THE CITY.
4. ZONING BY LAW AMENDMENT MAY BE REQUIRED.

**Revision**

Revision	By	Appd.	YY.MM.DD
5. ISSUED FOR TENDER	EA	JNV	24.06.07
4. ISSUED FOR PRE-TENDER	EA	JNV	24.05.27
3. ISSUED FOR SPA SUBMISSION	EA	JNV	24.04.22
2. ISSUED FOR STAGE 2.3 MOH SUBMISSION	EA	JNV	24.02.23
1. ISSUED FOR SPA SUBMISSION	EA	JNV	24.01.15

**Issued**

File Name:	RT	MD	RT	23.03.03
14002022_Landscape_ph1	Dwn.	Chkd.	Disgn.	YY.MM.DD

**Permit/Seal**

**Client/Project**

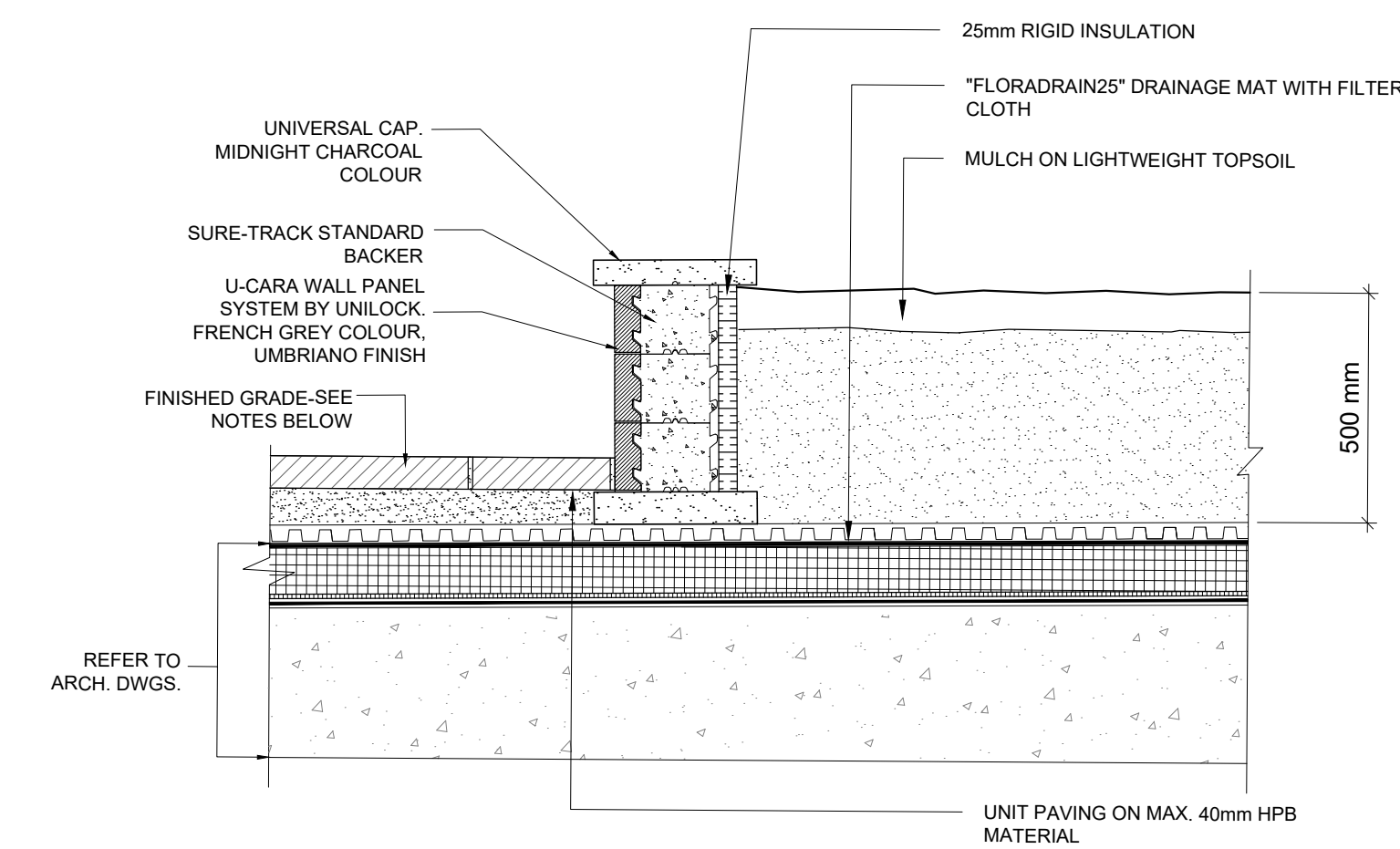
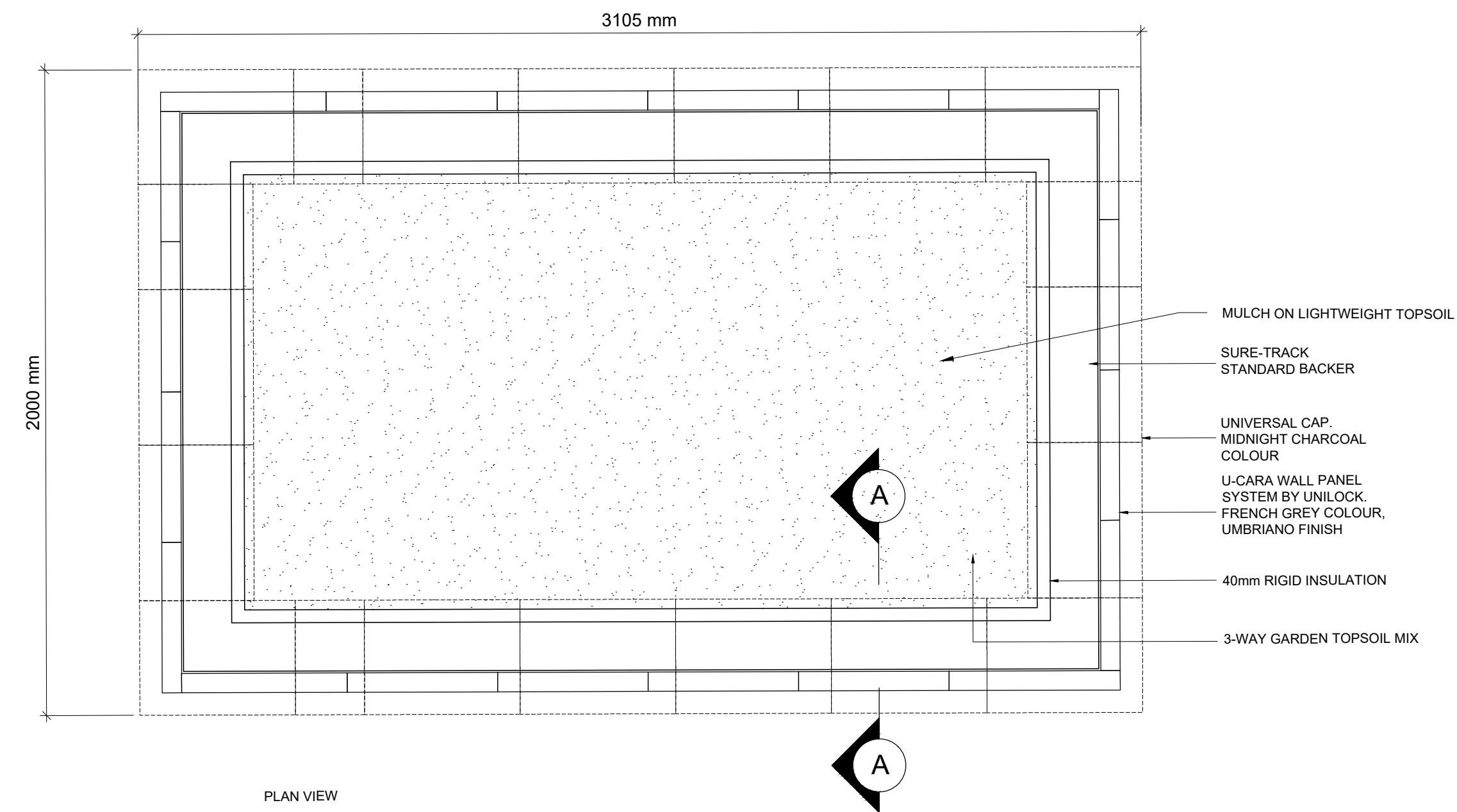
GUELPH GENERAL HOSPITAL  
EMERGENCY MENTAL HEALTH AND ADDICTIONS SERVICES RELOCATION AND EMERGENCY DEPARTMENT EXPANSION  
Guelph, ON Canada

**Title**

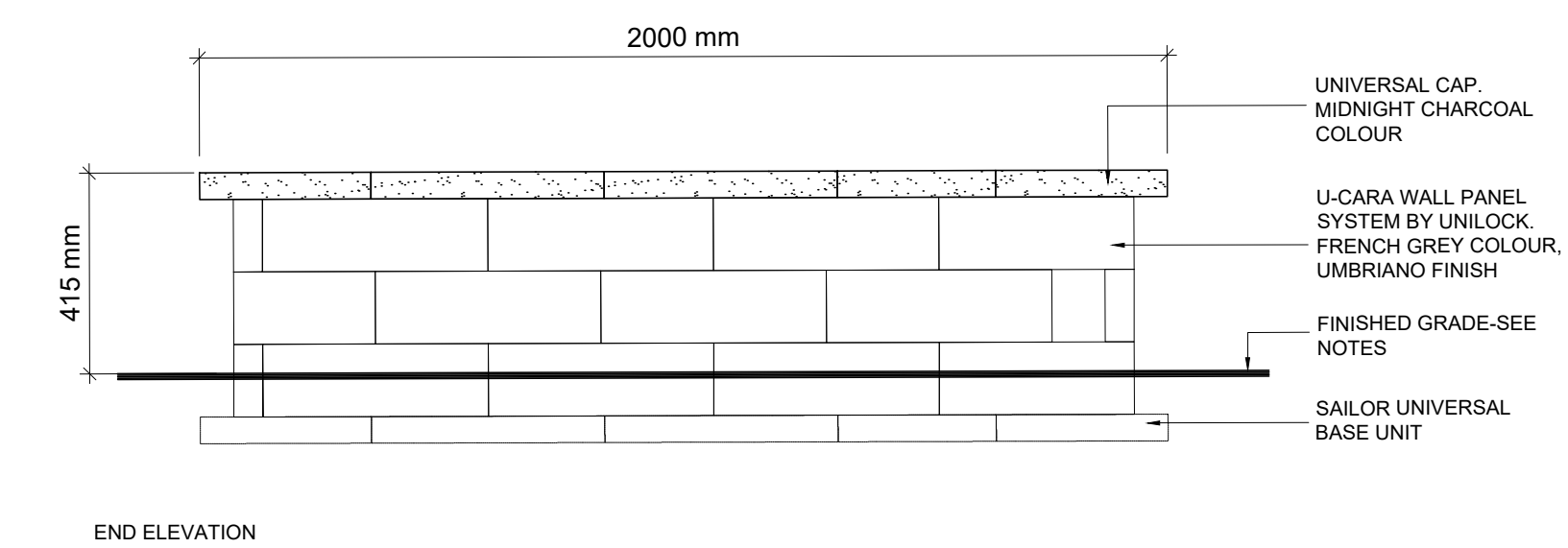
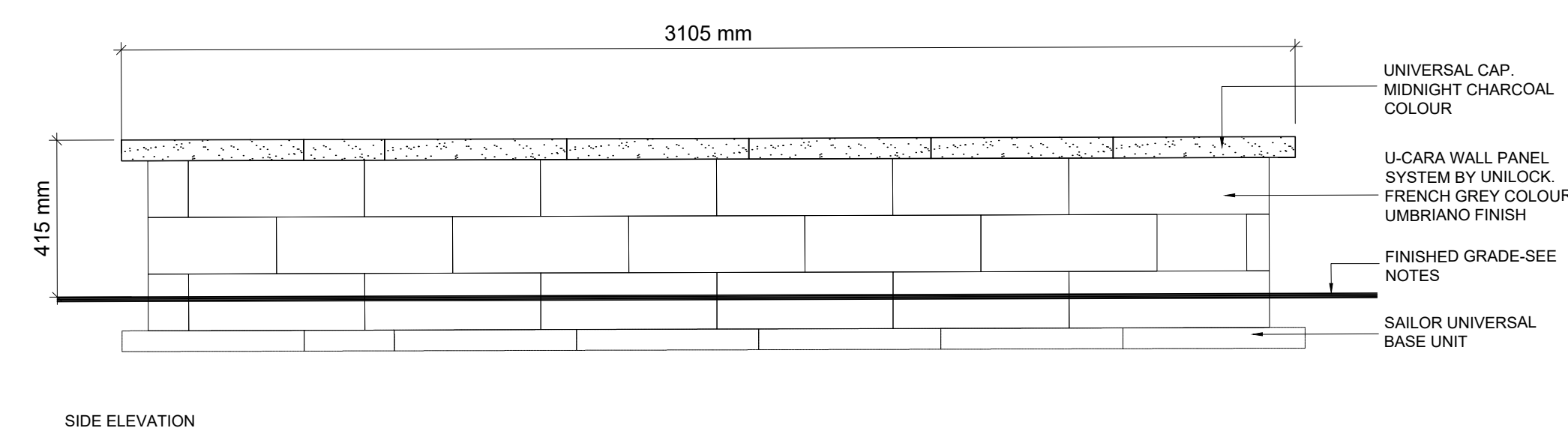
LANDSCAPE DETAILS  
PHASE 1  
SP23-015S

Project No.	Scale
14002022	NOT TO SCALE

Drawing No.	Sheet	Revision
L-201	3 of 3	0



- NOTES:**
1. INSTALL WALL SYSTEM IN ACCORDANCE WITH UNILOCK INSTALLATION REQUIREMENTS.
  2. FINISHED GRADE AROUND PLANTERS TO BE EITHER CONCRETE SIDEWALK OR UNIT PAVING. SEE PLAN FOR LOCATION OF EACH SURFACE.



**1 PRECAST PLANTER**  
L-201 SCALE: NTS