

MECHANICAL LEGEND	
HEATING, VENTILATION AND AIR CONDITIONING (HVAC)	
	RIGID DUCTWORK
	ACOUSTICALLY LINED DUCTWORK
	FLEXIBLE ROUND DUCTWORK
	SUPPLY DUCTWORK RISER UP
	EXHAUST/RETURN DUCTWORK RISER UP
	SUPPLY DUCTWORK RISER DOWN
	EXHAUST/RETURN DUCTWORK RISER DOWN
	BALANCING DAMPER
	SPLITTER DAMPER
	DOOR UNDERCUT
	DOOR GRILLE
	CAPPED DUCTWORK
	SPIN-ON FITTING WITH BALANCING DAMPER
	SUPPLY AIR DIFFUSER
	RETURN/EXHAUST AIR GRILLE
	FLEXIBLE CONNECTION
	SUPPLY AIR GRILLE - WALL-MOUNTED
	RETURN AIR GRILLE - WALL-MOUNTED
	FLEXIBLE DUCT CONNECTION TO RIGID DUCTWORK
	SQUARE ELBOW WITH AIR TURNING VANES
	FUSIBLE LINK FIRE DAMPER WITH ACCESS DOOR IN DUCT
	MOTORIZED DAMPER
	BACK DRAFT DAMPER
	BALANCING DAMPER
	BRANCH TAKE-OFF WITH ADJUSTABLE SPLITTER DAMPER IN SUPPLY DUCT
	OPEN ENDED DUCT WITH BALANCING DAMPER AND BELLMOUTH INLET
	AIR HANDLING UNIT SILENCER AS PER SILENCER SCHEDULE
	A-84 DENOTES DIFFUSER TYPE - DENOTES AIRFLOW (IN L/S) 25 DENOTES NECK SIZE, DUCTWORK TO MATCH.
	THERMOSTAT TIED TO AN EXISTING CONTROL SYSTEM
	STANDALONE THERMOSTAT
	PUMP
	HOT WATER SUPPLY - HEATING
	HOT WATER RETURN - HEATING
	HOT WATER REVERSE RETURN - HEATING
	REFRIGERATION LINE - LIQUID
	REFRIGERATION LINE - GAS
	CONDENSATE LINE
	NATURAL GAS LINE
	NATURAL GAS VENT LINE
	COMPRESSED AIR LINE
	ISOLATION VALVE. TYPE AS PER SPECIFICATION
	BALANCING VALVE
	STRAINER
	PRESSURE REDUCING VALVE
	AUTOMATIC 2-WAY CONTROL VALVE
	AUTOMATIC 3-WAY CONTROL VALVE
	CHECK VALVE
	UNION
	MANUAL AIR VENT
	DENOTES EXISTING PIPING TO BE REMOVED
	DENOTES EXISTING PIPING TO REMAIN
	DENOTES NEW PIPING
	GAS METER
	PROPANE METER
	ELECTRIC HEAT TRACING; DIVISION 15 UNLESS OTHERWISE NOTED
	PRESSURE GAUGE
	THERMOMETER
	PIPE UP
	PIPE DOWN

MECHANICAL LEGEND	
HEATING, VENTILATION AND AIR CONDITIONING (HVAC)	
	WALL FIN HEATER
	CV-A DENOTES TYPE
	7000 DENOTES HEAT OUTPUT IN WATTS
	0.15 DENOTES FLOW RATE IN L/S
	FORCED FLOW HEATER
	FFH-A DENOTES TYPE
	REFER TO FORCED FLOW HEATER SCHEDULE FOR HEAT OUTPUT AND FLOW RATE
	VAV BOX
PLUMBING AND DRAINAGE	
	ABOVE-GROUND STORM
	UNDERGROUND STORM
	ABOVE-GROUND SANITARY
	UNDERGROUND SANITARY
	PUMPED SANITARY
	RUNNING TRAP
	PLUMBING TRAP
	SANITARY VENT
	SANITARY CLEANOUT IN ACCESSIBLE CEILING SPACE
	SANITARY CLEANOUT IN SLAB
	DOMESTIC COLD WATER
	DOMESTIC HOT WATER
	DOMESTIC HOT WATER RECIRCULATION
	BACKFLOW PREVENTER - SUITABLE FOR SERVICE INTENDED
	WATER METER
	HOSE BIBB
	NON-FREEZE HOSE BIBB
	VENT THROUGH ROOF
	RAIN WATER LEADER
	FLOOR DRAIN
	FUNNEL FLOOR DRAIN
	ROOF DRAIN
CONTROLS	
	BAS - TEMPERATURE SENSOR - IN PIPING
	BAS - CURRENT SENSOR
	BAS - PRESSURE SWITCH
	BAS - FLOW SWITCH
	BAS - ANALOG INPUT
	BAS - ANALOG OUTPUT
	BAS - DIGITAL INPUT
	BAS - DIGITAL OUTPUT
FIRE PROTECTION	
	FIRE EXTINGUISHER IN ENCLOSURE C/W MOUNTING BRACKET
	FIRE EXTINGUISHER C/W MOUNTING BRACKET
	FIRE BLANKET
ACRONYMS	
LABEL	DESCRIPTION
AD	ACCESS DOOR
AC	AIR CONDITIONER
BD	BALANCING DAMPER
BDD	BACKDRAFT DAMPER
CAP	CAP EXISTING SERVICE
CD	CONDENSATE
CTE	CONNECT TO EXISTING
CUT	CUT POINT
DF	DRINKING FOUNTAIN
EA	EXHAUST AIR
EX	EXISTING
FD	FIRE DAMPER
FE	FIRE EXTINGUISHER
FS	FLOW SWITCH
HHS	HAND-HELD SHOWER
LV	LAVATORY
MD	MOTORIZED DAMPER
NO	NORMALLY OPEN
NC	NORMALLY CLOSED
OA	OUTDOOR AIR
PG	PRESSURE GAUGE
RWL	RAIN WATER LEADER
REM	REMOVE
RP	REPLACE
RA	RETURN AIR
SA	SUPPLY AIR
SV	SUPERVISED VALVE
TYP	TYPICAL
UV	UNIT VENTILATOR
VTR	VENT THROUGH ROOF
WD	WASHER-DRYER UNIT
WC	WATER CLOSET

GENERAL NOTES:

- ALL DEMOLITION AND NEW WORK SHALL BE COORDINATED WITH ALL TRADES PRESENT ON SITE. CONSTRUCT NEW SERVICES AND LOCATE NEW EQUIPMENT IN SUCH A WAY THAT IT DOES NOT CONFLICT WITH WORK OF OTHER DIVISIONS AND/OR THE OPERATION/MAINTENANCE OF WORK/MATERIAL SUPPLIED BY OTHER DIVISIONS.
- IT IS MANDATORY FOR THE MECHANICAL CONTRACTOR TO VISIT THE SITE PRIOR TO BIDDING AND REVIEW EXISTING CONDITIONS AND DEMOLITION SCOPE OF WORK TO SUIT EXISTING ARCHITECTURAL, ELECTRICAL, STRUCTURAL AND MECHANICAL SITE CONDITIONS, DRAWINGS, SPECIFICATIONS AND ALL CONTRACT DOCUMENTS. NO EXTRA WILL SUBSEQUENTLY BE ALLOWED TO COVER ANY SUCH ERROR, OMISSION AND/OR OVERSIGHT FOR NOT HAVING MADE A THOROUGH INSPECTION OF THE GROUNDS, EXISTING CONDITIONS, DRAWINGS, SPECIFICATION AND DESIGN INTENT. THE ELECTRICAL CONTRACTOR SHALL NOTE THAT THE EXISTING BUILDING WILL REMAIN IN OPERATION THROUGHOUT DEMOLITION/CONSTRUCTION. ALLOW FOR ANY WORK REQUIRED TO BE DONE WHICH MAY AFFECT POWER SUPPLY AND OPERATION OF THE BUILDING TO BE CARRIED OUT AFTER HOURS OR AT A TIME CONVENIENT TO THE BUILDING MANAGEMENT. PROVIDE TEMPORARY SERVICES AS REQUIRED TO ENSURE CONTINUED OPERATION AT ALL TIMES.
- CAREFULLY EXAMINE OTHER EXISTING UTILITY LINES SUCH AS GAS, WATER ETC. PRIOR TO STARTING ANY WORK.
- THESE DRAWINGS SHALL BE READ & PRICED IN CONJUNCTION WITH ALL DRAWINGS AND SPECIFICATIONS FORMING THE CONTRACT AS WELL AS ALL OTHER DOCUMENTS FORMING THIS BID. NO EXTRA COST WILL BE ACCEPTED IN FAILURE TO OBTAINING AND/OR REVIEW OF SUCH DOCUMENTS. REFER TO ARCHITECTURAL, ELECTRICAL, FIRE PROTECTION STRUCTURAL AND MECHANICAL LAYOUTS IN CONJUNCTION FOR EXACT LOCATION OF ALL EQUIPMENT. REPORT ANY DISCREPANCIES TO THE MECHANICAL ENGINEER PRIOR TO COMMENCING WORK. NO EXTRA WILL BE PROVIDED AS A RESULT OF A FAILURE TO DO SO.
- IT IS MANDATORY THAT ALL WORK COMPLY WITH ALL APPLICABLE CODES AND, CITY OF TORONTO STANDARDS, AND THE STANDARDS SET BY ANY AND ALL LOCAL AUTHORITIES HAVING JURISDICTION.
- ARRANGE FOR ALL INSPECTIONS REQUIRED BY AUTHORITIES HAVING JURISDICTION AS MANDATED BY CODES OR THE REQUIREMENTS OF THE AUTHORITIES. ATTEND ALL INSPECTIONS AND FURNISH ALL MATERIALS AND LABOUR REQUIRED TO COMPLETE THE INSPECTIONS TO THE SATISFACTION OF THE AUTHORITIES.
- IN THE EVENT OF ANY DISCREPANCY BETWEEN THE MECHANICAL DRAWINGS AND SPECIFICATIONS, ALLOW FOR THE HIGHEST-PRICED OPTION IN THE TENDER PRICE.
- ALL EQUIPMENT AND SERVICES SHALL BE STARTED-UP BY THE CONTRACTOR AND BY THE APPROPRIATE AGENCIES REQUIRED FOR CONDUCTING SUCH START-UPS. PROVIDE A MINIMUM OF 10 BUSINESS DAYS NOTICE TO THE MECHANICAL ENGINEER OF NEW EQUIPMENT/ SERVICES START-UPS.
- FURNISH ALL MATERIAL AND EQUIPMENT AS SPECIFIED, EXCEPT WHERE SPECIFIC APPROVAL FOR SUBSTITUTION IS GIVEN IN WRITING BY THE TENANT.
- PROVIDE AS-BUILT DRAWINGS IN CAD AND PDF FORMAT AT THE CONCLUSION OF THE PROJECT TO THE OWNER, ARCHITECT AND ENGINEERS.

DRAWING LIST	
DRAWING NUMBER	DESCRIPTION
M1	MECHANICAL LEGEND AND NOTES
M2	KEY PLAN
M3	EXISTING MECHANICAL LAYOUT
M4	NEW MECHANICAL LAYOUT
M5	SCHEDULES & SCHEMATICS

NOTES ABOUT ABATEMENT	
1.	REFER TO THE PROJECT-SPECIFIC DESIGNATED SUBSTANCES SURVEY CONDUCTED FOR THIS PROJECT DURING PRICING AND THROUGHOUT CONSTRUCTION. IT IS INCLUDED IN THE TENDER PACKAGE.
2.	THE GENERAL CONTRACTOR IS RESPONSIBLE FOR COMPLETING ALL NECESSARY ABATEMENT WORK WITHIN THE WORK AREA REQUIRED FOR THIS PROJECT AS PART OF THE BASE TENDER PRICE BASED ON THE PROJECT-SPECIFIC DSS.
3.	THE CONTRACTOR SHALL RETAIN ONLY LICENSED ABATEMENT/ENVIRONMENTAL CONTRACTORS TO COMPLETE ALL NECESSARY ABATEMENT WORK.
4.	COORDINATE ALL ABATEMENT ACTIVITIES WITH THE ENVIRONMENTAL CONSULTANT IN ADVANCE OF WORK EXECUTION. THE ENVIRONMENTAL CONSULTANT IS RETAINED DIRECTLY BY THE OWNER TO SUPERVISE ABATEMENT ACTIVITIES AS WELL AS CONDUCT POST-ABATEMENT INSPECTIONS.

GENERAL NOTES :

CONTRACTORS SHALL VERIFY AND BE RESPONSIBLE FOR ALL DIMENSIONS AND CONDITIONS ON THE JOB AND THE ENGINEER SHALL BE INFORMED OF ANY VARIATIONS FROM THE DIMENSIONS AND CONDITIONS SHOWN ON THE DRAWINGS. DO NOT SCALE DRAWINGS. SHOP DRAWINGS SHALL BE SUBMITTED TO THE ENGINEER FOR APPROVAL BEFORE PROCEEDING WITH FABRICATION. THIS DRAWING IS THE PROPERTY OF SURI & ASSOCIATES LTD. AND SHALL NOT BE REPRODUCED WITHOUT THEIR PERMISSION AND UNLESS THE REPRODUCTION CARRIES THEIR NAME. ALL INFORMATION SHOWN ON THIS DRAWING IS FOR USE ON THE SPECIFIED PROJECT ONLY AND SHALL NOT BE USED OTHERWISE WITHOUT WRITTEN PERMISSION OF SURI & ASSOCIATES LTD.

2	ISSUED FOR TENDER	MAY 31/24
1	ISSUED FOR 100% DESIGN REVIEW	MAY 6/24
No.	REVISION	DATE

Contractors shall verify all dimensions at the job.

SAL Project No.:24-105

Mechanical & Electrical Consultant:

SURI & ASSOCIATES LTD.
ENGINEERING CONSULTANTS

1018 ALBERTSON CRESCENT
MISSISSAUGA, ONTARIO
L5H 3C7
T (905)-290-7861

ELECTRICAL
MECHANICAL
LIGHTING
COMMUNICATION
SECURITY



Project

OAKRIDGE COMMUNITY
RECREATIONAL CENTRE
63 PHARMACY AVENUE,
TORONTO, ONTARIO. M1L 4S9

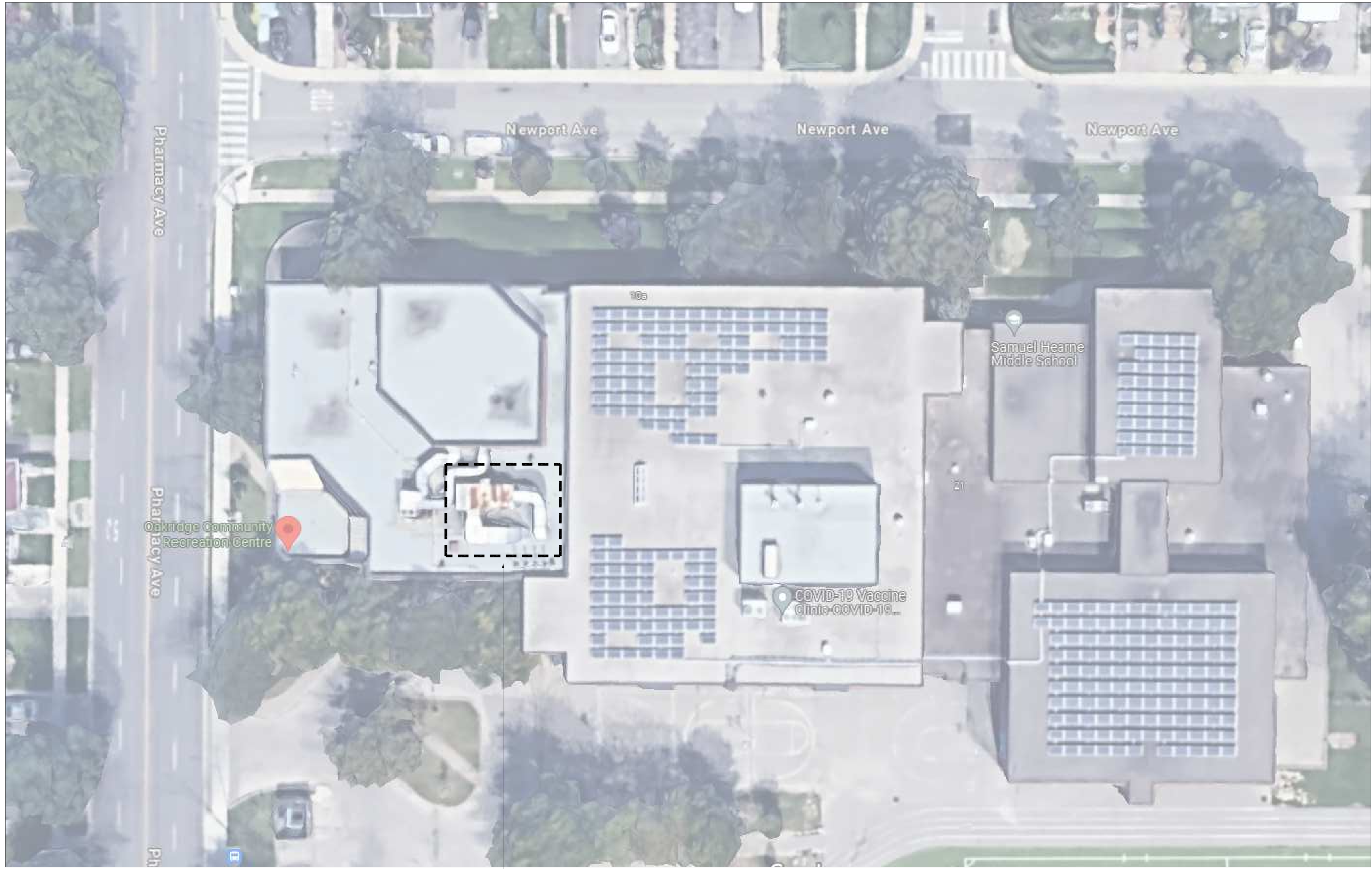
AIR HANDLING UNIT REPLACEMENT

Drawing Title

MECHANICAL LEGEND AND
NOTES

Checked:	RS	Date:	MAY 2024
Drawn:	RS	Scale:	AS NOTED
File Number:		Dwg Number:	M1

GENERAL NOTES :
 CONTRACTORS SHALL VERIFY AND BE RESPONSIBLE FOR ALL DIMENSIONS AND CONDITIONS ON THE JOB AND THE ENGINEER SHALL BE INFORMED OF ANY VARIATIONS FROM THE DIMENSIONS AND CONDITIONS SHOWN ON THE DRAWINGS. DO NOT SCALE DRAWINGS. SHOP DRAWINGS SHALL BE SUBMITTED TO THE ENGINEER FOR APPROVAL BEFORE PROCEEDING WITH FABRICATION. THIS DRAWING IS THE PROPERTY OF SURI & ASSOCIATES LTD. AND SHALL NOT BE REPRODUCED WITHOUT THEIR PERMISSION AND UNLESS THE REPRODUCTION CARRIES THEIR NAME. ALL INFORMATION SHOWN ON THIS DRAWING IS FOR USE ON THE SPECIFIED PROJECT ONLY AND SHALL NOT BE USED OTHERWISE WITHOUT WRITTEN PERMISSION OF SURI & ASSOCIATES LTD.



AREA OF WORK:
 EXISTING AIR HANDLING UNIT 'AHU-1' TO BE REPLACED WITH NEW. SEE DRAWINGS FOR FULL EXTENT OF WORK

2	ISSUED FOR TENDER	MAY 31/24
1	ISSUED FOR 100% DESIGN REVIEW	MAY 6/24
No.	REVISION	DATE

Contractors shall verify all dimensions at the job.

SAL Project No.: 24-105

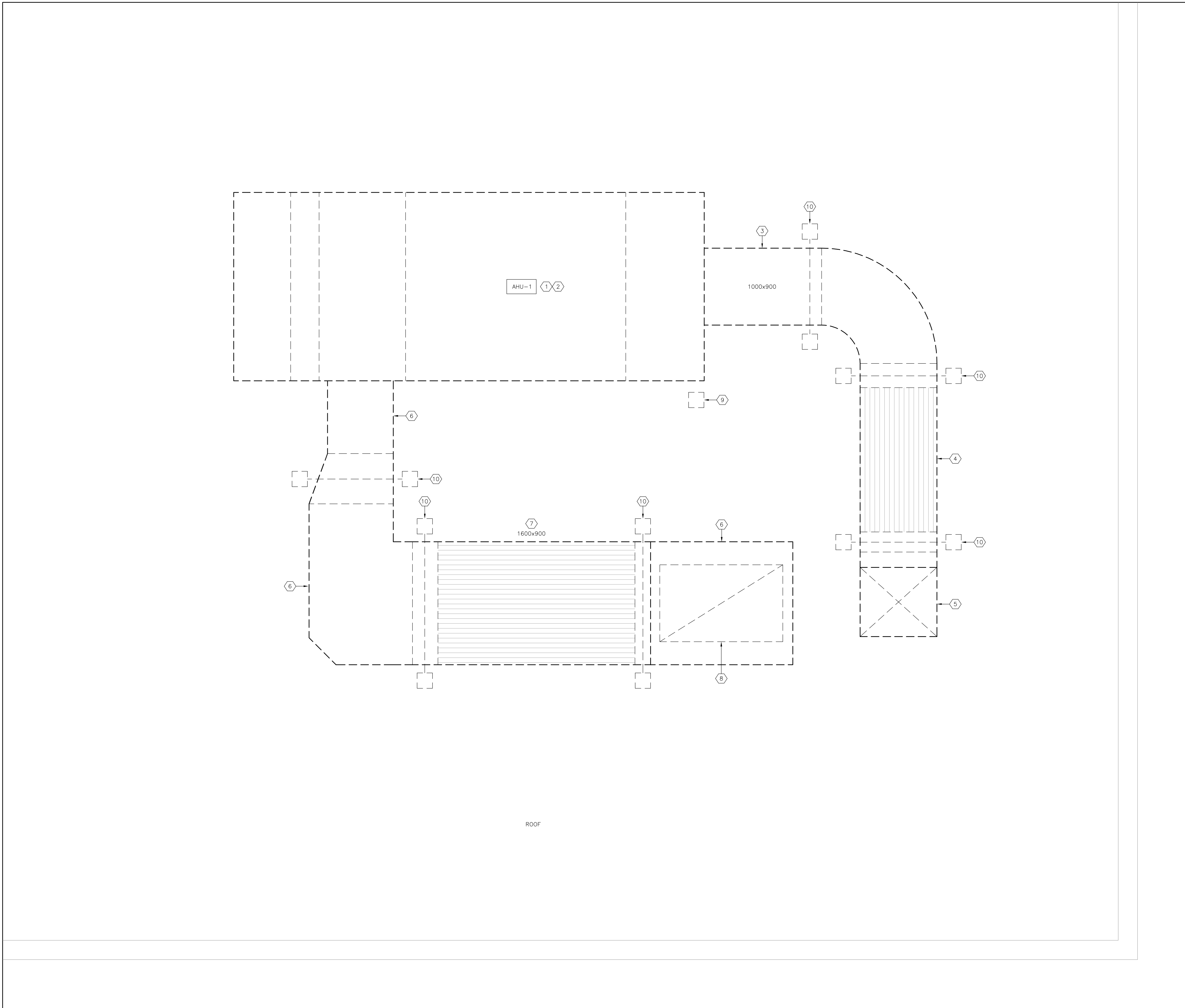
Mechanical & Electrical Consultant:
SURI & ASSOCIATES LTD.
 ENGINEERING CONSULTANTS
 1018 ALBERTSON CRESCENT MISSISSAUGA, ONTARIO L5H 3C7
 T (905)-290-7861
 ELECTRICAL MECHANICAL LIGHTING COMMUNICATION SECURITY



Project
 OAKRIDGE COMMUNITY RECREATIONAL CENTRE
 63 PHARMACY AVENUE, TORONTO, ONTARIO. M1L 4S9
 AIR HANDLING UNIT REPLACEMENT

Drawing Title
 KEY PLAN

Checked: RS	Date: MAY 2024
Drawn: RS	Scale: AS NOTED
File Number:	Dwg Number: M2



DRAWING NOTES:

- ① REMOVE THE EXISTING AIR HANDLING UNIT "AHU-1" IN ENTIRETY. DISPOSE OF OFF SITE.
- ② EXISTING STEEL BEAM FRAME SUPPORTING THE EXISTING AIR HANDLING UNIT IS TO REMAIN AS IS.
- ③ REMOVE ALL ROOFTOP SUPPLY AIR DUCTWORK IN ENTIRETY. DISPOSE OF OFF SITE.
- ④ REMOVE THE EXISTING SUPPLY AIR SILENCER IN ENTIRETY. DISPOSE OF OFF SITE.
- ⑤ EXISTING 1000x900 SUPPLY AIR DUCT DN. THROUGH THE ROOF. CUT AND REMOVE ALL ROOFTOP DUCTWORK.
- ⑥ REMOVE ALL ROOFTOP RETURN AIR DUCTWORK IN ENTIRETY. DISPOSE OF OFF SITE.
- ⑦ REMOVE THE EXISTING RETURN AIR SILENCER IN ENTIRETY. DISPOSE OF OFF SITE.
- ⑧ EXISTING 1600x1000 RETURN AIR DUCT DN. THROUGH THE ROOF. CUT AND REMOVE ALL ROOFTOP DUCTWORK.
- ⑨ REMOVE THE EXISTING PITCH POCKET SERVING THE ELECTRICAL FEEDER. MAKE GOOD ROOF ASSEMBLY. THE MECHANICAL CONTRACTOR SHALL RETAIN THE SERVICES OF THE DESIGNATED ROOFING CONTRACTOR(S) TO REPAIR THE EXISTING ROOF OPENING WHERE THE EXISTING POWER FEED TO THE AIR HANDLING UNIT COMES THROUGH THE ROOF. SEAL, MAKE WATERTIGHT AND MATCH THE EXISTING ROOF CONSTRUCTION. ALL COSTS OF THE ROOFING CONTRACTOR SHALL BE INCLUDED FOR IN THE BASE TENDER PRICE.
- ⑩ REMOVE THE EXISTING PENETRATING ROOFTOP DUCT SUPPORTS. MAKE GOOD ROOF ASSEMBLY. THE MECHANICAL CONTRACTOR SHALL RETAIN THE SERVICES OF THE DESIGNATED ROOFING CONTRACTOR(S) TO REPAIR THE EXISTING ROOF PENETRATIONS. SEAL, MAKE WATERTIGHT AND MATCH THE EXISTING ROOF CONSTRUCTION. ALL COSTS OF THE ROOFING CONTRACTOR SHALL BE INCLUDED FOR IN THE BASE TENDER PRICE.

GENERAL NOTES :

CONTRACTORS SHALL VERIFY AND BE RESPONSIBLE FOR ALL DIMENSIONS AND CONDITIONS ON THE JOB AND THE ENGINEER SHALL BE INFORMED OF ANY VARIATIONS FROM THE DIMENSIONS AND CONDITIONS SHOWN ON THE DRAWINGS. DO NOT SCALE DRAWINGS. SHOP DRAWINGS SHALL BE SUBMITTED TO THE ENGINEER FOR APPROVAL BEFORE PROCEEDING WITH FABRICATION. THIS DRAWING IS THE PROPERTY OF SURI & ASSOCIATES LTD. AND SHALL NOT BE REPRODUCED WITHOUT THEIR PERMISSION AND UNLESS THE REPRODUCTION CARRIES THEIR NAME. ALL INFORMATION SHOWN ON THIS DRAWING IS FOR USE ON THE SPECIFIED PROJECT ONLY AND SHALL NOT BE USED OTHERWISE WITHOUT WRITTEN PERMISSION OF SURI & ASSOCIATES LTD.

2	ISSUED FOR TENDER	MAY 31/24
1	ISSUED FOR 100% DESIGN REVIEW	MAY 6/24
No.	REVISION	DATE

Contractors shall verify all dimensions at the job.

SAL Project No.: 24-105

Mechanical & Electrical Consultant:
SURI & ASSOCIATES LTD.
 ENGINEERING CONSULTANTS
 1018 ALBERTSON CRESCENT
 MISSISSAUGA, ONTARIO
 L5H 3C7
 T (905)-290-7861
 ELECTRICAL
 MECHANICAL
 LIGHTING
 COMMUNICATION
 SECURITY

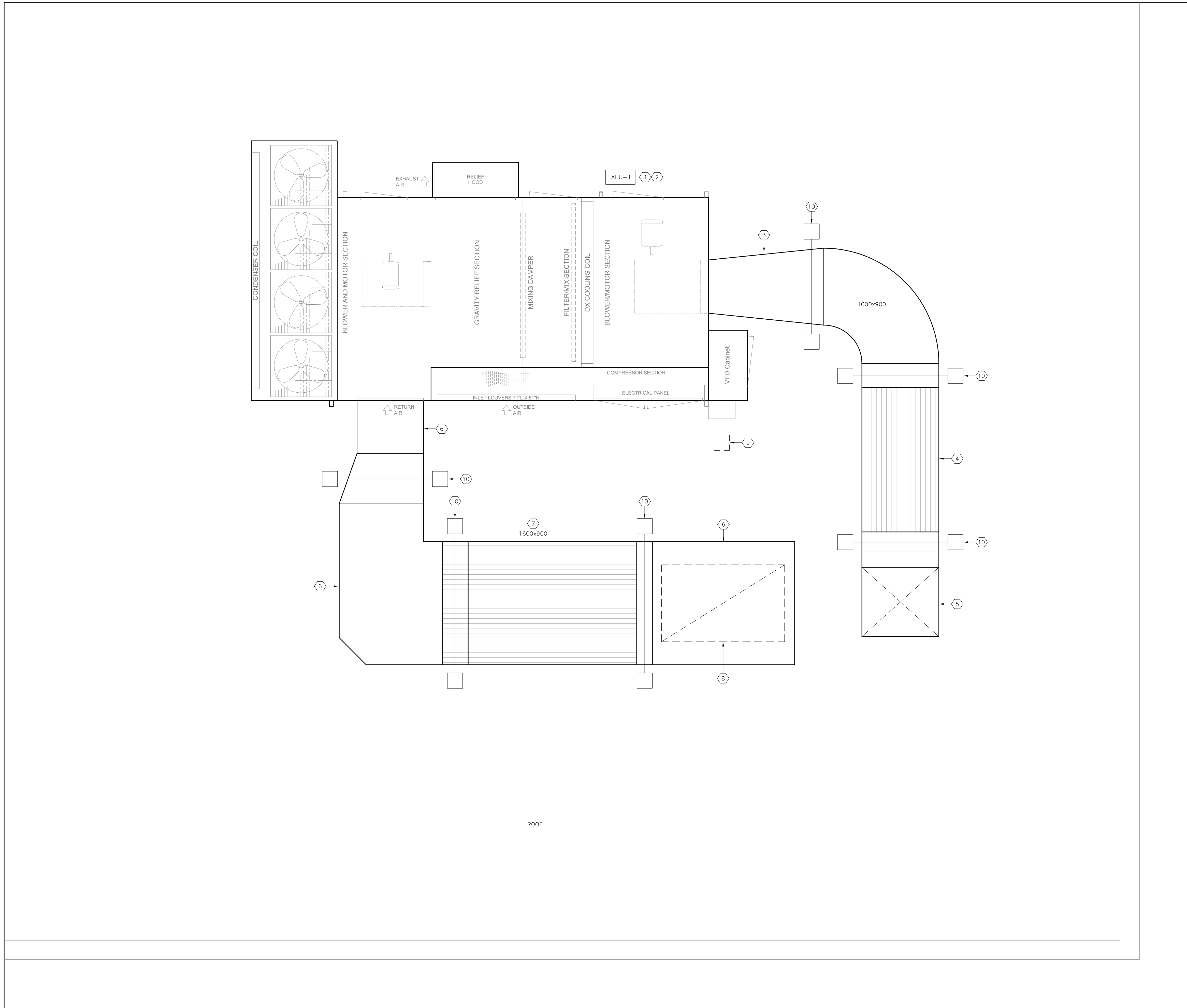


Project
 OAKRIDGE COMMUNITY
 RECREATIONAL CENTRE
 63 PHARMACY AVENUE,
 TORONTO, ONTARIO. M1L 4S9
 AIR HANDLING UNIT REPLACEMENT

Drawing Title
 EXISTING MECHANICAL LAYOUT

Checked:	RS	Date:	MAY 2024
Drawn:	RS	Scale:	AS NOTED
File Number:		Dwg Number:	M3

1 ROOF PART PLAN – EXISTING/DEMOLITION HVAC PLAN
 M3 SCALE: 1:25



DRAWING NOTES:

- ① PROVIDE A NEW AIR HANDLING UNIT "AHU-1" AS SCHEDULED ON THE EXISTING STEEL FRAME.
- ② EXISTING STEEL BEAM FRAME SUPPORTING THE EXISTING AIR HANDLING UNIT IS TO REMAIN AS IS.
- ③ PROVIDE NEW ROOFTOP SUPPLY AIR DUCTWORK AS SHOWN.
- ④ PROVIDE A NEW SUPPLY AIR SILENCER AS SHOWN.
- ⑤ EXISTING 1000x900 SUPPLY AIR DUCT DN. THROUGH THE ROOF. PROVIDE NEW DUCTWORK UP TO WITHIN 6" OF THE ROOF PENETRATION AND DUCT ROOF CURB. DO NOT IMPACT THE EXISTING DUCT CURB WHATSOEVER. TRANSITION THE NEW DUCTWORK TO MATCH THE EXISTING DUCT SIZE PENETRATING THE ROOF.
- ⑥ PROVIDE NEW ROOFTOP RETURN AIR DUCTWORK AS SHOWN.
- ⑦ PROVIDE A NEW RETURN AIR SILENCER AS SHOWN.
- ⑧ EXISTING 1600x1000 RETURN AIR DUCT DN. THROUGH THE ROOF. PROVIDE NEW DUCTWORK UP TO WITHIN 6" OF THE ROOF PENETRATION AND DUCT ROOF CURB. DO NOT IMPACT THE EXISTING DUCT CURB WHATSOEVER. TRANSITION THE NEW DUCTWORK TO MATCH THE EXISTING DUCT SIZE PENETRATING THE ROOF.
- ⑨ PROVIDE A NEW ROOFTOP DOGHOUSE AT THE AIR HANDLING UNIT LOCATION FOR ALL NEW ELECTRICAL AND CONTROLS CONDUITS. ALL ROOFING WORK SHALL BE COMPLETED BY THE ROOFING CONTRACTOR. THE MECHANICAL CONTRACTOR SHALL RETAIN THE SERVICES OF THE DESIGNATED ROOFING CONTRACTOR(S) FOR ALL ROOFING WORK. ALL COSTS OF THE ROOFING CONTRACTOR SHALL BE INCLUDED FOR IN THE BASE TENDER PRICE.
- ⑩ PROVIDE NEW ROOFTOP NON-PENETRATING DUCT SUPPORTS. DUCT SUPPORTS SHALL BE CUSTOM FABRICATED TO SUIT THE NEW DUCTWORK DIMENSIONS AND ALL ELBOWS, OFFSETS, TRANSITIONS, ETC. EXTERNALLY INSULATE ALL DUCTWORK. SEE DRAWING M5 FOR DETAIL.

GENERAL NOTES :

CONTRACTORS SHALL VERIFY AND BE RESPONSIBLE FOR ALL DIMENSIONS AND CONDITIONS ON THE JOB AND THE ENGINEER SHALL BE INFORMED OF ANY VARIATIONS FROM THE DIMENSIONS AND CONDITIONS SHOWN ON THE DRAWINGS. DO NOT SCALE DRAWINGS. SHOP DRAWINGS SHALL BE SUBMITTED TO THE ENGINEER FOR APPROVAL BEFORE PROCEEDING WITH FABRICATION. THIS DRAWING IS THE PROPERTY OF SURI & ASSOCIATES LTD. AND SHALL NOT BE REPRODUCED WITHOUT THEIR PERMISSION AND UNLESS THE REPRODUCTION CARRIES THEIR NAME. ALL INFORMATION SHOWN ON THIS DRAWING IS FOR USE ON THE SPECIFIED PROJECT ONLY AND SHALL NOT BE USED OTHERWISE WITHOUT WRITTEN PERMISSION OF SURI & ASSOCIATES LTD.

2	ISSUED FOR TENDER	MAY 31/24
1	ISSUED FOR 100% DESIGN REVIEW	MAY 6/24
No.	REVISION	DATE

Contractors shall verify all dimensions at the job.

SAL Project No.: 24-105

Mechanical & Electrical Consultant:
SURI & ASSOCIATES LTD.
 ENGINEERING CONSULTANTS
 1018 ALBERTSON CRESCENT MISSISSAUGA, ONTARIO L5H 3C7 T (905)-290-7861
 ELECTRICAL MECHANICAL LIGHTING COMMUNICATION SECURITY

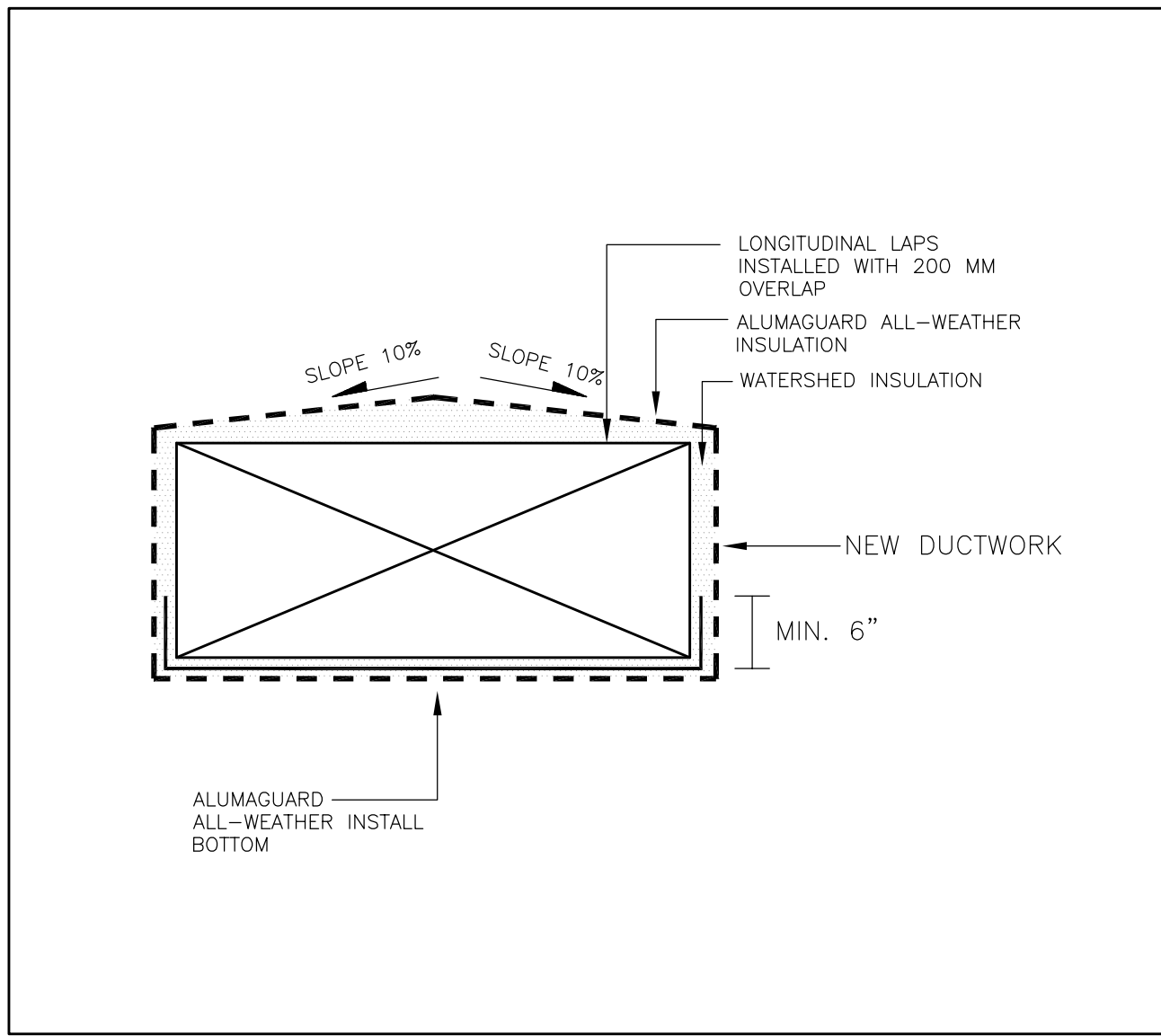


Project
 OAKRIDGE COMMUNITY RECREATIONAL CENTRE
 63 PHARMACY AVENUE, TORONTO, ONTARIO. M1L 4S9
 AIR HANDLING UNIT REPLACEMENT

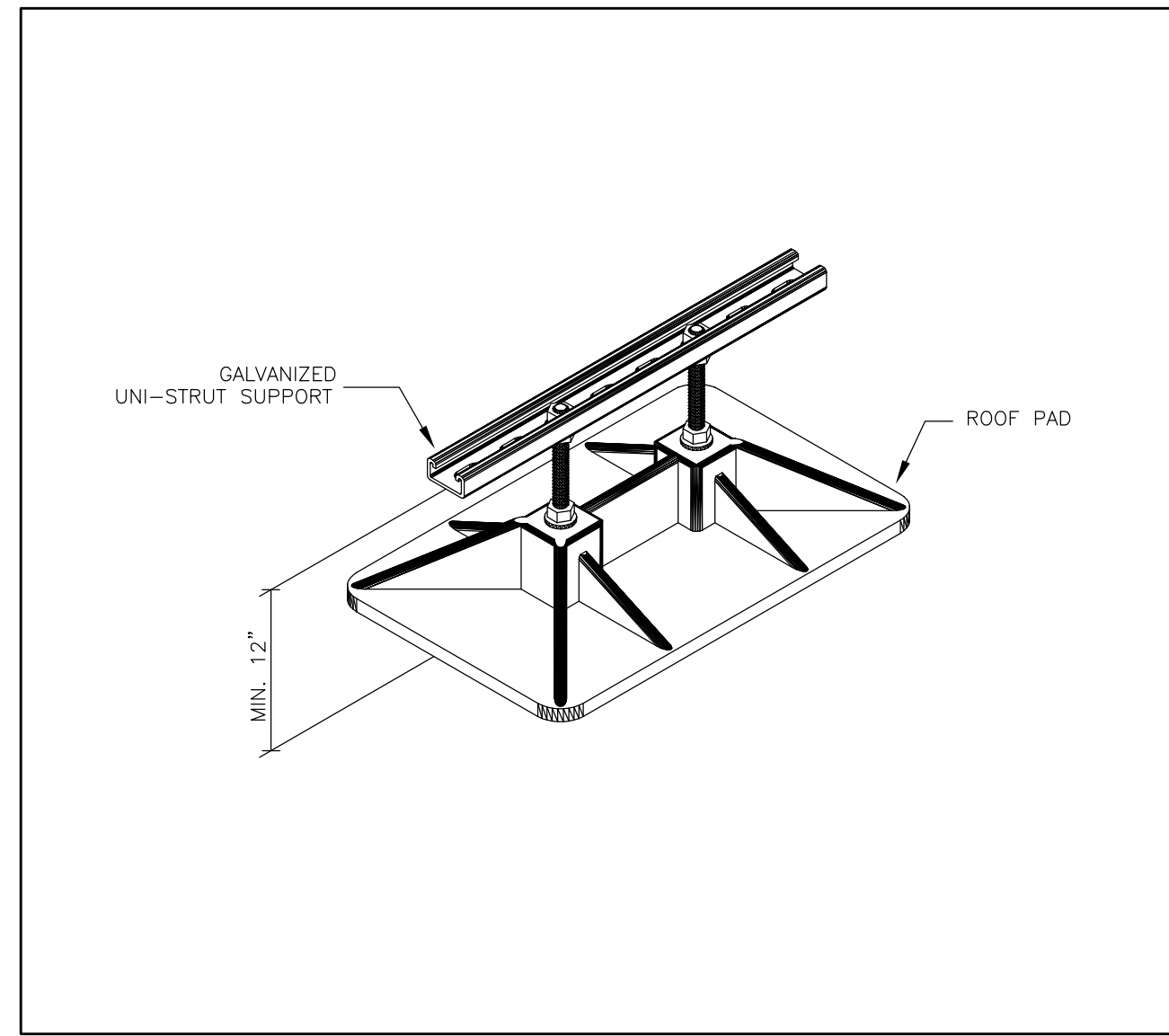
Drawing Title
 NEW MECHANICAL LAYOUT

Checked: RS	Date: MAY 2024
Drawn: RS	Scale: AS NOTED
File Number:	Dwg Number: M4

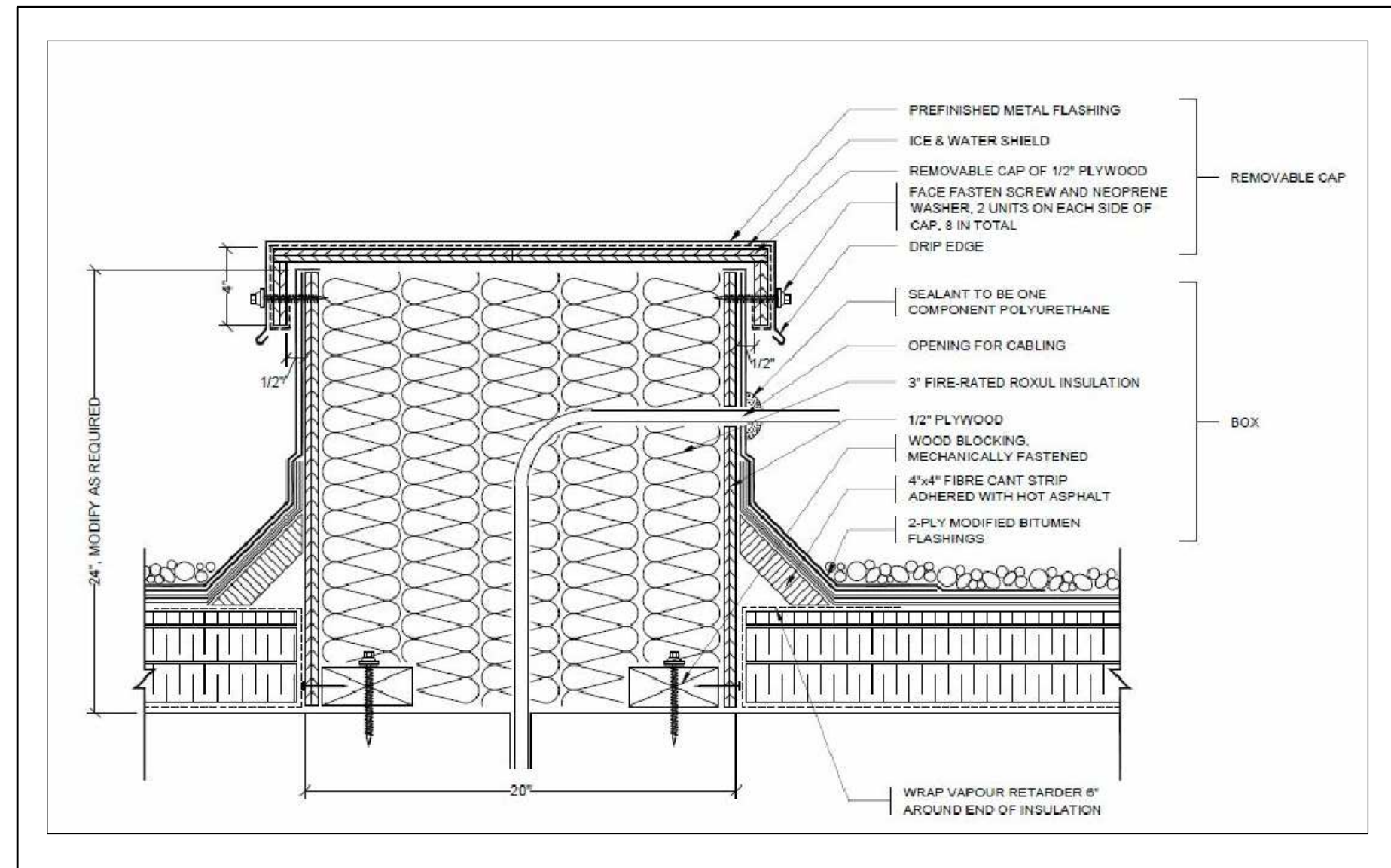
① ROOF PART PLAN - NEW HVAC PLAN
 M4 SCALE: 1:25



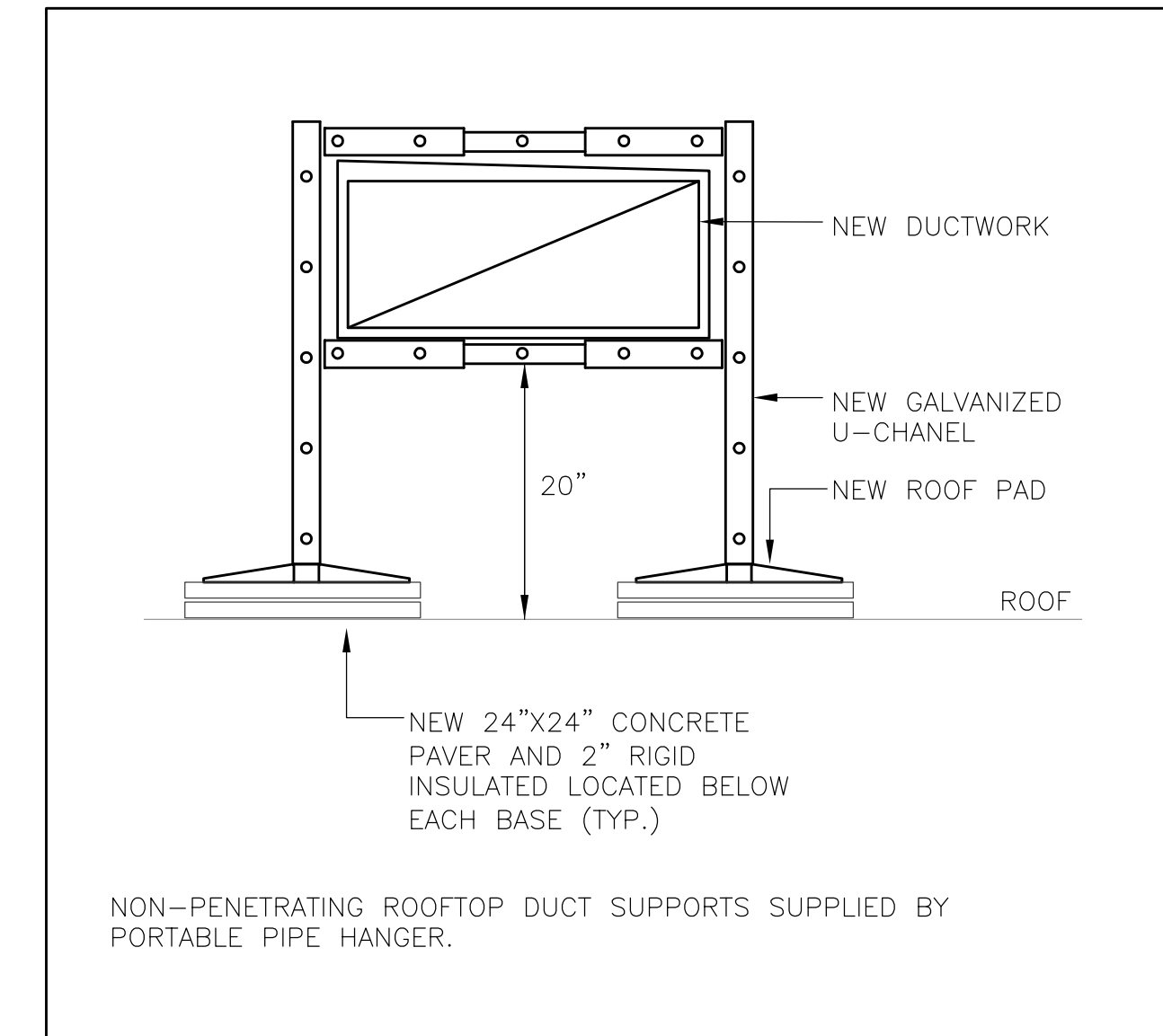
1 ROOFTOP DUCT INSTALL DETAIL
M5 SCALE: N.T.S.



2 ROOFTOP CONDUIT SUPPORT DETAIL
M5 SCALE: N.T.S.



3 ROOFTOP "DOGHOUSE" DETAIL FOR ROOF PENETRATIONS FOR CONDUITS
M5 SCALE: N.T.S.



4 ROOFTOP DUCT SUPPORT DETAIL
M5 SCALE: N.T.S.

CUSTOM AIR HANDLING UNIT SCHEDULE																												
EQUIPMENT DESIGNATION	MANUFACTURER	MODEL	SUPPLY FAN				RETURN FAN				MINIMUM OUTDOOR AIR (CFM)	HEATING			COOLING						MCA	MOCP	VOLTAGE	UNIT WEIGHT (LBS)				
			CFM	E.S.P. (IN.WC)	RPM	HP	VFD	CFM	E.S.P. (IN.WC)	RPM		HP	VFD	TYPE	INPUT (MBH)	OUTPUT (MBH)	TYPE	COOLING STAGES	TOTAL CAPACITY	SENSIBLE CAPACITY					EDBT/EWBT	LDBT/LWBT	LEAVING COIL VELOCITY	COIL PRESSURE DROP
AHU-1	ENGINEERED AIR	FWE313/O/MV	11,500	1.00	-	10.0	YES	10,400	0.50	-	7.5	YES	2,300 (20.0%)	N/A	N/A	N/A	INTEGRAL DIRECT EXPANSION (DX)	3	388 MBH [113.7 KW]	283 MBH [82.9 KW]	80°F/67°F [26.7°C/19.4°C]	57.2°F/56.4°F [14.0°C/13.6°C]	537 FPM [2.73 M/S]	0.94 IN. W.C. [233.9 Pa]	183.6A	200A	208V/3ø/60	7,900

NOTES:
 1. RTU SHALL COME BASE CHANNEL TO SUIT THE EXISTING ROOFTOP STEEL STRUCTURE.
 2. RTU SHALL COME C/W A 2" MERV 13 PRE-FILTER. NO POST-FILTER REQUIRED.
 3. RTU SHALL BE CAPABLE OF FREE COOLING/ECONOMIZER MODE.
 4. RTU SHALL COME C/W MOTORIZED MODULATING OUTDOOR AIR INTAKE, EXHAUST AIR AND MIXED AIR DAMPERS.
 5. RTU SHALL COME C/W WEATHERPROOF, GFCI SERVICE RECEPTACLE, FACTORY INSTALLED, FIELD WIRED C/W WEATHERPROOF COVER.
 6. RTU SHALL COME C/W UNFUSED, LOCAL DISCONNECT SWITCH MOUNTED ON THE UNIT.
 7. RTU SHALL COME C/W POWER OUTLET FOR THE GLOBAL PLASMA SOLUTION (GPS) iMOD MODULAR NEEDLEPOINT BIPOLAR IONIZATION AIR PURIFICATION SYSTEM.
 8. RTU SHALL COME C/W THREE (3) DAMPER ACTUATORS.
 9. THE MECHANICAL CONTRACTOR, AS A PART OF THE BASE TENDER PRICE, IS RESPONSIBLE SUPPLYING AND SITE INSTALLING THE GLOBAL PLASMA SOLUTION (GPS) iMOD MODULAR NEEDLEPOINT BIPOLAR IONIZATION AIR PURIFICATION SYSTEM (AS SUPPLIED BY APPLIED ENERGY SYSTEMS). INSTALL IN STRICT ACCORDANCE WITH THE MANUFACTURER'S INSTRUCTIONS.

GENERAL NOTES :

CONTRACTORS SHALL VERIFY AND BE RESPONSIBLE FOR ALL DIMENSIONS AND CONDITIONS ON THE JOB AND THE ENGINEER SHALL BE INFORMED OF ANY VARIATIONS FROM THE DIMENSIONS AND CONDITIONS SHOWN ON THE DRAWINGS. DO NOT SCALE DRAWINGS. SHOP DRAWINGS SHALL BE SUBMITTED TO THE ENGINEER FOR APPROVAL BEFORE PROCEEDING WITH FABRICATION. THIS DRAWING IS THE PROPERTY OF SURI & ASSOCIATES LTD. AND SHALL NOT BE REPRODUCED WITHOUT THEIR PERMISSION AND UNLESS THE REPRODUCTION CARRIES THEIR NAME. ALL INFORMATION SHOWN ON THIS DRAWING IS FOR USE ON THE SPECIFIED PROJECT ONLY AND SHALL NOT BE USED OTHERWISE WITHOUT WRITTEN PERMISSION OF SURI & ASSOCIATES LTD.

2	ISSUED FOR TENDER	MAY 31/24
1	ISSUED FOR 100% DESIGN REVIEW	MAY 6/24
No.	REVISION	DATE

Contractors shall verify all dimensions at the job.

SAL Project No.: 24-105

Mechanical & Electrical Consultant:
SURI & ASSOCIATES LTD.
 ENGINEERING CONSULTANTS

1018 ALBERTSON CRESCENT
 MISSISSAUGA, ONTARIO
 L5H 3C7
 T (905)-290-7861

ELECTRICAL
 MECHANICAL
 LIGHTING
 COMMUNICATION
 SECURITY



Project
 OAKRIDGE COMMUNITY
 RECREATIONAL CENTRE
 63 PHARMACY AVENUE,
 TORONTO, ONTARIO. M1L 4S9
 AIR HANDLING UNIT REPLACEMENT

Drawing Title
 SCHEDULES & SCHEMATICS

Checked: RS	Date: MAY 2024
Drawn: RS	Scale: AS NOTED
File Number:	Dwg Number: M5

LIGHTING LEGEND	
A1	STANDARD TYPE 'A1' LIGHT FIXTURE AS SCHEDULED
A1	TYPE 'A1' LIGHT FIXTURE AS SCHEDULED, CONNECTED TO THE EMERGENCY POWER SOURCE (INVERTER OR GENERATOR)
B1	WALL-MOUNTED TYPE 'B1' LIGHT FIXTURE AS SCHEDULED
\$	LINE-VOLTAGE, TOGGLE LIGHT SWITCH.
\$D	LOW-VOLTAGE, TOGGLE & DIMMER LIGHT SWITCH, AS SPECIFIED.
\$K	LOW-VOLTAGE, KEY-SWITCH TYPE LIGHT SWITCH, AS SPECIFIED.
\$MS	LOW-VOLTAGE, KEY-SWITCH TYPE, MASTER LIGHT SWITCH, AS SPECIFIED. CONTROLS ALL CORRIDOR, WASHROOM AND VESTIBULE LIGHTING
\$OS	LOW-VOLTAGE LIGHT SWITCH COMPLETE WITH INTEGRAL OCCUPANCY SENSOR, AS SPECIFIED.
OS	CORNER/WALL-MOUNTED, LOW-VOLTAGE OCCUPANCY SENSOR, AS SCHEDULED
OS	CEILING-MOUNTED, LOW-VOLTAGE OCCUPANCY SENSOR, AS SCHEDULED
○	EXTERIOR-GRADE, WALL-MOUNTED LIGHT FIXTURE
○	EXTERIOR-GRADE, LIGHT STANDARD COMPLETE WITH CONCRETE BASE
BU	EMERGENCY LIGHTING BATTERY UNIT C/W NO REMOTE HEADS
BU	EMERGENCY LIGHTING BATTERY UNIT C/W DUAL-HEAD REMOTE HEADS
••	EMERGENCY LIGHTING DUAL-HEAD REMOTE HEAD
EXIT	EMERGENCY LIGHTING, WALL-MOUNTED EXIT SIGN
EXIT	EMERGENCY LIGHTING, CEILING-MOUNTED EXIT SIGN

POWER DEVICES & EQUIPMENT LEGEND	
⊕	SINGLE RECEPTACLE MOUNTED AT STANDARD HEIGHT; USE AND RATING FOR THE PURPOSE INTENDED.
⊕	SINGLE RECEPTACLE MOUNTED AT HIGH LEVEL; USE AND RATING FOR THE PURPOSE INTENDED
⊕	15A, 120V DUPLEX RECEPTACLE MOUNTED AT STANDARD HEIGHT. 'T' DENOTES 20A, T-SLOT TYPE RECEPTACLE
⊕	15A, 120V DUPLEX RECEPTACLE MOUNTED AT HIGH LEVEL. 'T' DENOTES 20A, T-SLOT TYPE RECEPTACLE
⊕	15A, 120V, GFI DUPLEX RECEPTACLE MOUNTED AT HIGH LEVEL. 'T' DENOTES 20A, T-SLOT TYPE RECEPTACLE
⚡	DIRECT POWER CONNECTION
□	UNFUSED DISCONNECT SWITCH
□	FUSED DISCONNECT SWITCH
⚡	DIRECT POWER CONNECTION COMPLETE UNFUSED DISCONNECT SWITCH
□	BLANK COVERPLATE COMPLETE WITH WIRING, CONDUIT, AND BACKBOX
⊙	ROUND JUNCTION BOX COMPLETE WITH COVERPLATE
⊙	SQUARE JUNCTION BOX COMPLETE WITH COVERPLATE
■	RECESSED ELECTRICAL PANEL, AS SCHEDULED
■	SURFACE-MOUNTED ELECTRICAL PANEL, AS SCHEDULED
CC-1	DEVICE/EQUIPMENT CONNECTED TO CIRCUIT #1 IN PANEL 'CC'

COMMUNICATIONS (VOICE/DATA) LEGEND	
▽	DATA OUTLET MOUNTED AT STANDARD HEIGHT ROUGH-IN
▼	TELEPHONE OUTLET MOUNTED AT STANDARD HEIGHT ROUGH-IN
▽	DATA OUTLET MOUNTED AT HIGH LEVEL ROUGH-IN
▼	TELEPHONE OUTLET MOUNTED AT HIGH LEVEL ROUGH-IN
WAP	WIRELESS ACCESS POINT COMPLETE WITH CATEGORY 6, FT6 CABLING TO THE HUB RACK
▼	TELEPHONE & DATA OUTLET

DRAWING LIST	
DRAWING NUMBER	DESCRIPTION
E1	ELECTRICAL LEGEND AND NOTES
E2	KEY PLAN
E3	EXISTING ELECTRICAL LAYOUT
E4	NEW ELECTRICAL LAYOUT

SYSTEMS DEVICE & EQUIPMENT LEGEND	
■	MODULAR CONTROL PANEL, SUPPLIED AND INSTALLED BY DIVISION 26
■	DOOR OPERATOR ACTUATOR BUTTON
KS	KEY SWITCH, TIED TO THE DOOR OPERATOR SYSTEM
HD	HAND DRYER, SUPPLIED AND INSTALLED BY DIVISION 26
PL	PUSH-TO-LOCK BUTTON TIED TO THE WASHROOM DOOR OPERATOR SYSTEM
⊕	'OCCUPIED-WHEN-LIT' LED ANNUNCIATOR TIED TO THE WASHROOM DOOR OPERATOR SYSTEM
⊕	VISUAL INDICATOR TIED TO THE CALL-FOR-ASSISTANCE SYSTEM
E	EMERGENCY PUSH-BUTTON TIED TO THE CALL-FOR-ASSISTANCE SYSTEM
⊕	AUDIBLE/VISUAL INDICATOR

FIRE ALARM SYSTEM LEGEND	
●	RATE-OF-RISE HEAT DETECTOR
●	FIXED TEMPERATURE HEAT DETECTOR
●	SMOKE DETECTOR
■	PULL STATION C/W TAMPERPROOF, POLYCARBONATE COVER
🔔	FIRE ALARM BELL
🔔	FIRE ALARM HORN/STROBE
🔊	FIRE ALARM SPEAKER
TL	REMOTE TROUBLE INDICATOR
FS	SPRINKLER/STANDPIPE FLOW SWITCH
SV	SPRINKLER/STANDPIPE SUPERVISED VALVE
🔊	FIRE ALARM ANNUNCIATOR
■	FIRE ALARM CONTROL PANEL

ACCESS CONTROL SYSTEM LEGEND	
DB	DOOR BELL
ES	ELECTRIC STRIKE
MS	AIPHONE MASTER STATION
SMS	AIPHONE SUB-MASTER STATION
KP	ALARM KEYPAD
CH	DOOR BELL CHIME
⊕	AUDIBLE/VISUAL ANNUNCIATOR TIED TO THE LOCAL DOOR ALARM SYSTEM

SECURITY SYSTEM LEGEND	
M	MOTION DETECTOR
KP	INTRUSION ALARM SYSTEM KEY PAD
C	CAMERA
ES	ELECTRIC STRIKE

CLOCK SYSTEM LEGEND	
🕒	ANALOG CLOCK, 120V PLUG-IN TYPE COMPLETE WITH SINGLE RECEPTACLE - WALL-MOUNTED
🕒	ANALOG CLOCK, 120V PLUG-IN TYPE COMPLETE WITH SINGLE RECEPTACLE - WALL-MOUNTED
MC	ANALOG CLOCK TIED TO THE MASTER CLOCK SYSTEM - WALL-MOUNTED
MC	DUAL-FACE ANALOG CLOCK TIED TO THE MASTER CLOCK SYSTEM - WALL-MOUNTED
BO	ANALOG CLOCK, BATTERY OPERATED - WALL-MOUNTED
BO	DUAL-FACE ANALOG CLOCK, BATTERY OPERATED - WALL-MOUNTED
MC	MASTER CLOCK SYSTEM CONTROLLER

AUDIO/VISUAL SYSTEM LEGEND	
AV	EMPTY BACKBOX COMPLETE WITH BLANK COVERPLATE AND 25mmC UP TO THE ACCESSIBLE CEILING SPACE PROVISION FOR FUTURE AV CABLING

GENERAL	
WG	DENOTES DEVICE/EQUIPMENT EQUIPPED WITH A WIREGUARD
N	DENOTES NEW DEVICE/EQUIPMENT C/W NEW WIRING AND NEW RACEWAYS
R	DENOTES DEVICE/EQUIPMENT TO REMOVED C/W ALL REDUNDANT WIRING/RACEWAYS
ER	DENOTES DEVICE/EQUIPMENT TO BE RELOCATED
RE	DENOTES RELOCATED POSITION OF AN EXISTING DEVICE/EQUIPMENT
RP	DENOTES EXISTING DEVICE/EQUIPMENT TO BE REPLACED WITH NEW

ACRONYM LEGEND	
ACRONYM	DESCRIPTION
AFF	ABOVE FINISHED FLOOR
CTE	CONNECT TO EXISTING
ER	DENOTES EXISTING DEVICE OR EQUIPMENT TO BE RELOCATED
EX	DENOTE EXISTING DEVICE OR EQUIPMENT TO REMAIN
GFI	DENOTE DEVICE OR EQUIPMENT WITH GFI PROTECTION
HL	DENOTES DEVICE OR EQUIPMENT AT HIGH LEVEL
LV	LOW VOLTAGE
N	DENOTES NEW DEVICE OR EQUIPMENT
NL	DENOTES NIGHT LIGHT FIXTURE
R	DENOTES EXISTING DEVICE OR EQUIPMENT TO BE REMOVED
RE	DENOTES RELOCATED POSITION OF AN EXISTING DEVICE OR EQUIPMENT
RP	DENOTES EXISTING DEVICE OR EQUIPMENT TO BE REPLACED
RT	DENOTES ROOFTOP DEVICE OR EQUIPMENT
T	T-SLOT, 20A, DEVICE
TP	DENOTES TAMPERPROOF DEVICE OR EQUIPMENT
WG	DENOTES DEVICE OR EQUIPMENT WITH A WIREGUARD
WP	DENOTES WEATHERPROOF TYPE DEVICE OR EQUIPMENT

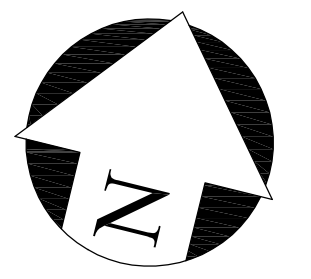

GENERAL NOTES	
1.	IT IS MANDATORY FOR THE ELECTRICAL CONTRACTOR TO VISIT SITE AND REVIEW EXISTING CONDITIONS AND DEMOLITION SCOPE OF WORK TO SUIT EXISTING ARCHITECTURAL AND STRUCTURAL CONDITIONS AND MECHANICAL DRAWINGS. NO EXTRA WILL SUBSEQUENTLY BE ALLOWED TO COVER ANY SUCH ERROR, OMISSION AND/OR OVERSIGHT FOR NOT HAVING MADE A THOROUGH INSPECTION OF THE GROUNDS, EXISTING CONDITIONS, DRAWINGS, SPECIFICATION AND DESIGN INTENT. THE ELECTRICAL CONTRACTOR SHALL NOTE THAT THE EXISTING BUILDING WILL REMAIN IN OPERATION THROUGHOUT DEMOLITION/CONSTRUCTION. ALLOW FOR ANY WORK REQUIRED TO BE DONE WHICH MAY AFFECT POWER SUPPLY AND OPERATION OF THE BUILDING TO BE CARRIED OUT AFTER HOURS OR AT A TIME CONVENIENT TO THE BUILDING MANAGEMENT. PROVIDE TEMPORARY SERVICES AS REQUIRED TO ENSURE CONTINUED OPERATION AT ALL TIMES.
2.	CAREFULLY EXAMINE OTHER EXISTING UTILITY LINES SUCH AS GAS, WATER ETC. PRIOR TO START THE ELECTRICAL CONSTRUCTION WORKS AND COORDINATE WITH OTHER TRADES AND REPORT OF ANY DISCREPANCY PRIOR TO PROCEEDING.
3.	THESE DRAWINGS SHALL BE READ & PRICED IN CONJUNCTION WITH ARCHITECTURAL, MECHANICAL, AND AV DRAWINGS AND SPECIFICATIONS. INCLUDE FOR THE SUPPLY AND INSTALLATION OF POWER, SYSTEMS, AND LIGHTING AS PER THE COMPLETE CONSTRUCTION DOCUMENTS. NO EXTRA COST WILL BE ACCEPTED IN FAILURE TO OBTAINING AND/OR REVIEW OF SUCH DOCUMENTS. REFER TO ARCHITECTURAL, AV, ELECTRICAL, AND MECHANICAL LAYOUTS IN CONJUNCTION FOR EXACT LOCATION OF ALL EQUIPMENT. REPORT ANY DISCREPANCIES TO THE ELECTRICAL ENGINEER PRIOR TO COMMENCING WORK. NO EXTRA WILL BE PROVIDED AS A RESULT OF A FAILURE TO DO SO.
4.	IT IS MANDATORY THAT ELECTRICAL WORK CONFORM TO ALL APPLICABLE CODES (INCLUDING ONTARIO BUILDING, FIRE, AND ELECTRICAL SAFETY CODE), BASE BUILDING STANDARDS, AND THE STANDARDS SET BY ANY AND ALL LOCAL AUTHORITIES HAVING JURISDICTION.
5.	LOCATIONS OF ALL NEW DISCONNECT SWITCHES AND STARTERS SHALL BE CONFIRMED WITH DIVISION 15 PRIOR TO INSTALLATION. STARTERS FOR EXHAUST FANS SHALL BE SUPPLIED AND INSTALLED BY DIV. 16.
6.	ALL ELECTRICAL WORK SHALL BE INSPECTED BY THE ELECTRICAL SAFETY AUTHORITY (ESA).
7.	CONTRACTOR IS RESPONSIBLE FOR HIRING A FIRE WATCH AS REQUIRED BY CODE, LOCAL AUTHORITIES HAVING JURISDICTION, OR AS MANDATED BY THE PROPERTY MANAGER DURING ANY ALTERATION OR DOWNTIME OF THE FIRE ALARM SYSTEM.
8.	CONTRACTOR MUST REVIEW CITY OF TORONTO STANDARDS AND PRIOR TO PRICING. ALL CONSTRUCTION MUST ABIDE BY CITY OF TORONTO STANDARDS. INCLUDE FOR ANY SUCH ITEMS MANDATED BY THE CITY IN THE TENDER PRICING.

MECHANICAL EQUIPMENT WIRING SCHEDULE										
EQUIPMENT DESCRIPTION	STARTER LOCATION	STARTER TYPE	MCA/HP/KW	VOLTS/PH./FREQUENCY	BREAKER SIZE OR FUSE SIZE	FEEDER SIZE	PANEL AND CCT. NOS.	REMARKS	FIRE ALARM FAN SHUTDOWN [AHU/EF ONLY]	TIED TO BAS SYSTEM?
AIR HANDLING UNIT 'AHU-1'	INTEGRAL	INTEGRAL	MCA: 183.6A	208V/3PH/60Hz	200A-3P	3-250MCM RW90+G IN 63mmC	MAIN DISTRIBUTION PANEL	ELECTRICAL UNIT SHALL PROVIDE POWER CONNECTION TO THE AIR HANDLING UNIT. PROVIDE A LOCAL DISCONNECT SWITCH.	YES	NO
<p>1. PROVIDE POWER CONNECTION TO ALL MECHANICAL EQUIPMENT LISTED IN THE SCHEDULE FOR A FULL OPERATIONAL SYSTEM. REFER TO MECHANICAL LAYOUTS AND SCHEDULES FOR EXACT LOCATION OF EQUIPMENT. PROVIDE SEPARATE BREAKER FOR INDIVIDUAL MECHANICAL EQUIPMENT. SIZE AS INDICATED IN THE SCHEDULE.</p> <p>2. PROVIDE A LOCAL DISCONNECT SWITCH FOR ALL MECHANICAL EQUIPMENT IN THIS SCHEDULE, UNLESS IT IS NOTED THAT THE DISCONNECT SWITCH IS TO BE PROVIDED BY THE EQUIPMENT MANUFACTURER. DISCONNECT SWITCH SHALL BE SEPARATE FROM THE STARTER SERVING THE RESPECTIVE EQUIPMENT. NOTE THAT DISCONNECT SWITCHES ARE NOT ILLUSTRATED ON THE FLOOR PLAN (FOR CLARITY), HOWEVER MUST BE SUPPLIED AND INSTALLED BY DIVISION 26 FOR ALL MECHANICAL EQUIPMENT LISTED IN THE ABOVE SCHEDULE.</p> <p>3. THE ELECTRICAL CONTRACTOR WILL BE RESPONSIBLE FOR REVIEWING ALL MECHANICAL SHOP DRAWINGS WITH RESPECT TO RELEVANT ELECTRICAL INFORMATION PRIOR TO THE SHOP DRAWINGS BEING SUBMITTED TO THE MECHANICAL AND ELECTRICAL ENGINEER FOR REVIEW. NO EQUIPMENT SHALL BE ORDERED PRIOR TO SUBMITTING SHOP DRAWINGS AND RECEIVING SHOP DRAWINGS BACK APPROVED BY BOTH THE MECHANICAL AND ELECTRICAL ENGINEER. THE ELECTRICAL CONTRACTOR IS RESPONSIBLE FOR WORKING WITH EACH MANUFACTURER OR MECHANICAL EQUIPMENT AND GATHERING THE 'MCA' AND 'MOP' OF ALL EQUIPMENT AND LISTING IT ON THE SHOP DRAWING FOR EACH MECHANICAL EQUIPMENT PRIOR TO SUBMITTING SHOP DRAWINGS FOR REVIEW.</p> <p>4. WHERE NOTED THAT AN AIR HANDLING UNIT/EXHAUST FAN IS TO HAVE FIRE ALARM FAN SHUTDOWN, PROVIDE THE NECESSARY WIRING, CONDUIT AND RELAYS TO TIE THE EQUIPMENT TO THE FIRE ALARM SYSTEM FOR SHUTDOWN ON A GENERAL ALARM.</p> <p>5. PROVIDE VFD RATED CABLES FROM THE VFD TO THE MOTOR</p>										

GENERAL NOTES :
 CONTRACTORS SHALL VERIFY AND BE RESPONSIBLE FOR ALL DIMENSIONS AND CONDITIONS ON THE JOB AND THE ENGINEER SHALL BE INFORMED OF ANY VARIATIONS FROM THE DIMENSIONS AND CONDITIONS SHOWN ON THE DRAWINGS. DO NOT SCALE DRAWINGS. SHOP DRAWINGS SHALL BE SUBMITTED TO THE ENGINEER FOR APPROVAL BEFORE PROCEEDING WITH FABRICATION. THIS DRAWING IS THE PROPERTY OF SURI & ASSOCIATES LTD. AND SHALL NOT BE REPRODUCED WITHOUT THEIR PERMISSION AND UNLESS THE REPRODUCTION CARRIES THEIR NAME. ALL INFORMATION SHOWN ON THIS DRAWING IS FOR USE ON THE SPECIFIED PROJECT ONLY AND SHALL NOT BE USED OTHERWISE WITHOUT WRITTEN PERMISSION OF SURI & ASSOCIATES LTD.

2	ISSUED FOR TENDER	MAY 31/24
1	ISSUED FOR 100% DESIGN REVIEW	MAY 6/24
No.	REVISION	DATE

Contractors shall verify all dimensions at the job.

SAL Project No.: 24-105

Mechanical & Electrical Consultant:

SURI & ASSOCIATES LTD.
ENGINEERING CONSULTANTS

1018 ALBERTSON CRESCENT MISSISSAUGA, ONTARIO L5H 3C7 T (905)-290-7861

ELECTRICAL MECHANICAL LIGHTING COMMUNICATION SECURITY



Project
 OAKRIDGE COMMUNITY RECREATIONAL CENTRE
 63 PHARMACY AVENUE,
 TORONTO, ONTARIO. M1L 4S9

AIR HANDLING UNIT REPLACEMENT

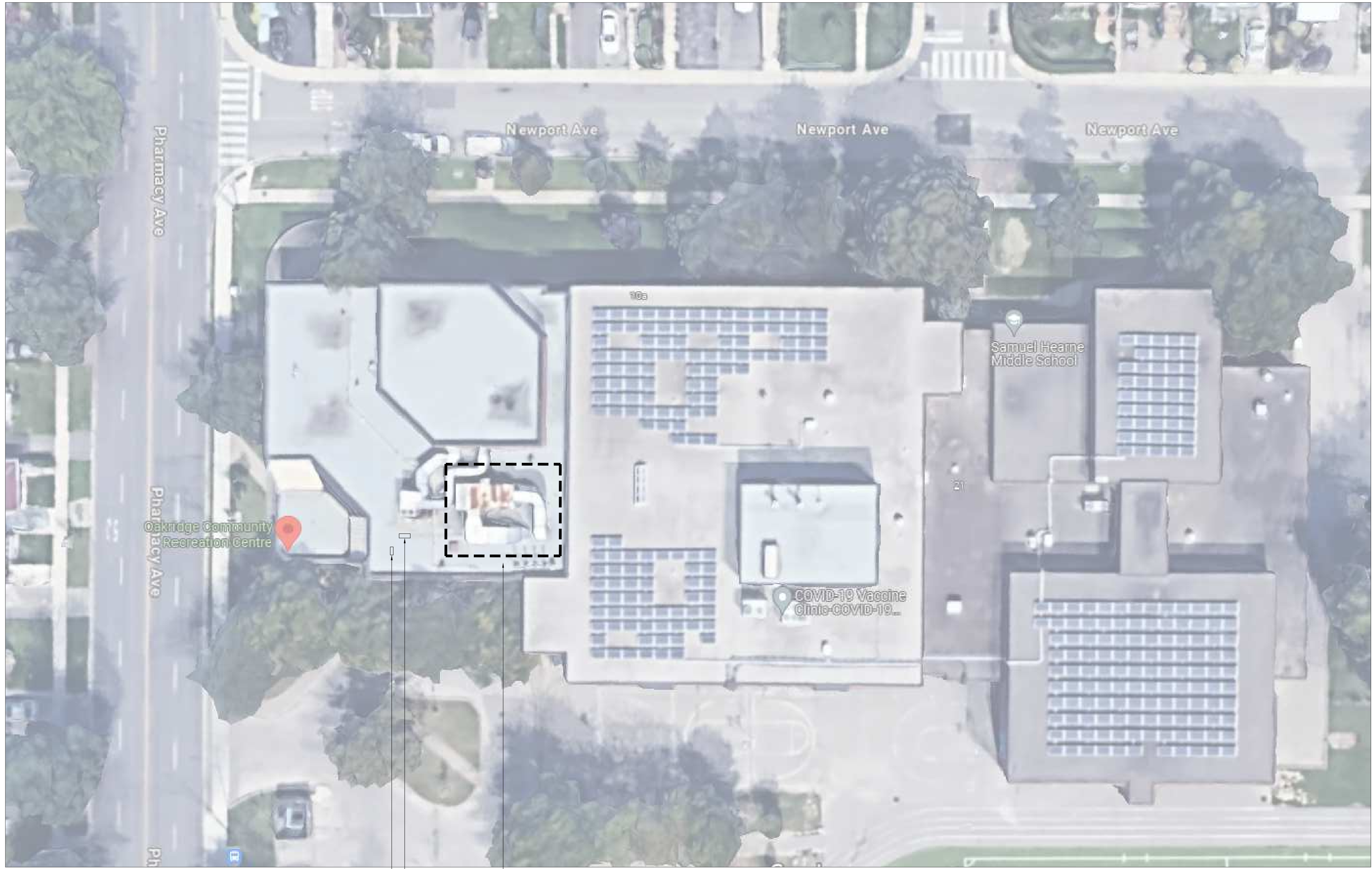
Drawing Title
 ELECTRICAL LEGEND AND NOTES

Checked: RS Date: MAY 2024

Drawn: RS Scale: AS NOTED

File Number: Dwg Number: E1

GENERAL NOTES :
 CONTRACTORS SHALL VERIFY AND BE RESPONSIBLE FOR ALL DIMENSIONS AND CONDITIONS ON THE JOB AND THE ENGINEER SHALL BE INFORMED OF ANY VARIATIONS FROM THE DIMENSIONS AND CONDITIONS SHOWN ON THE DRAWINGS. DO NOT SCALE DRAWINGS. SHOP DRAWINGS SHALL BE SUBMITTED TO THE ENGINEER FOR APPROVAL BEFORE PROCEEDING WITH FABRICATION. THIS DRAWING IS THE PROPERTY OF SURI & ASSOCIATES LTD. AND SHALL NOT BE REPRODUCED WITHOUT THEIR PERMISSION AND UNLESS THE REPRODUCTION CARRIES THEIR NAME. ALL INFORMATION SHOWN ON THIS DRAWING IS FOR USE ON THE SPECIFIED PROJECT ONLY AND SHALL NOT BE USED OTHERWISE WITHOUT WRITTEN PERMISSION OF SURI & ASSOCIATES LTD.



EXISTING FIRE ALARM CONTROL PANEL OF 'MIRCOM SERIES 1000' MAKE & MODEL IN THE MAIN ELECTRICAL ROOM ON THE SECOND FLOOR

AREA OF WORK:
 EXISTING AIR HANDLING UNIT 'AHU-1' TO BE REPLACED WITH NEW. SEE DRAWINGS FOR FULL EXTENT OF WORK

EXISTING 800A, 120/208V, 3ø, 4W MAIN DISTRIBUTION PANEL OF 'FEDERAL PIONEER' MAKE IN THE MAIN ELECTRICAL ROOM ON THE SECOND FLOOR

2	ISSUED FOR TENDER	MAY 31/24
1	ISSUED FOR 100% DESIGN REVIEW	MAY 6/24
No.	REVISION	DATE

Contractors shall verify all dimensions at the job.

SAL Project No.: 24-105

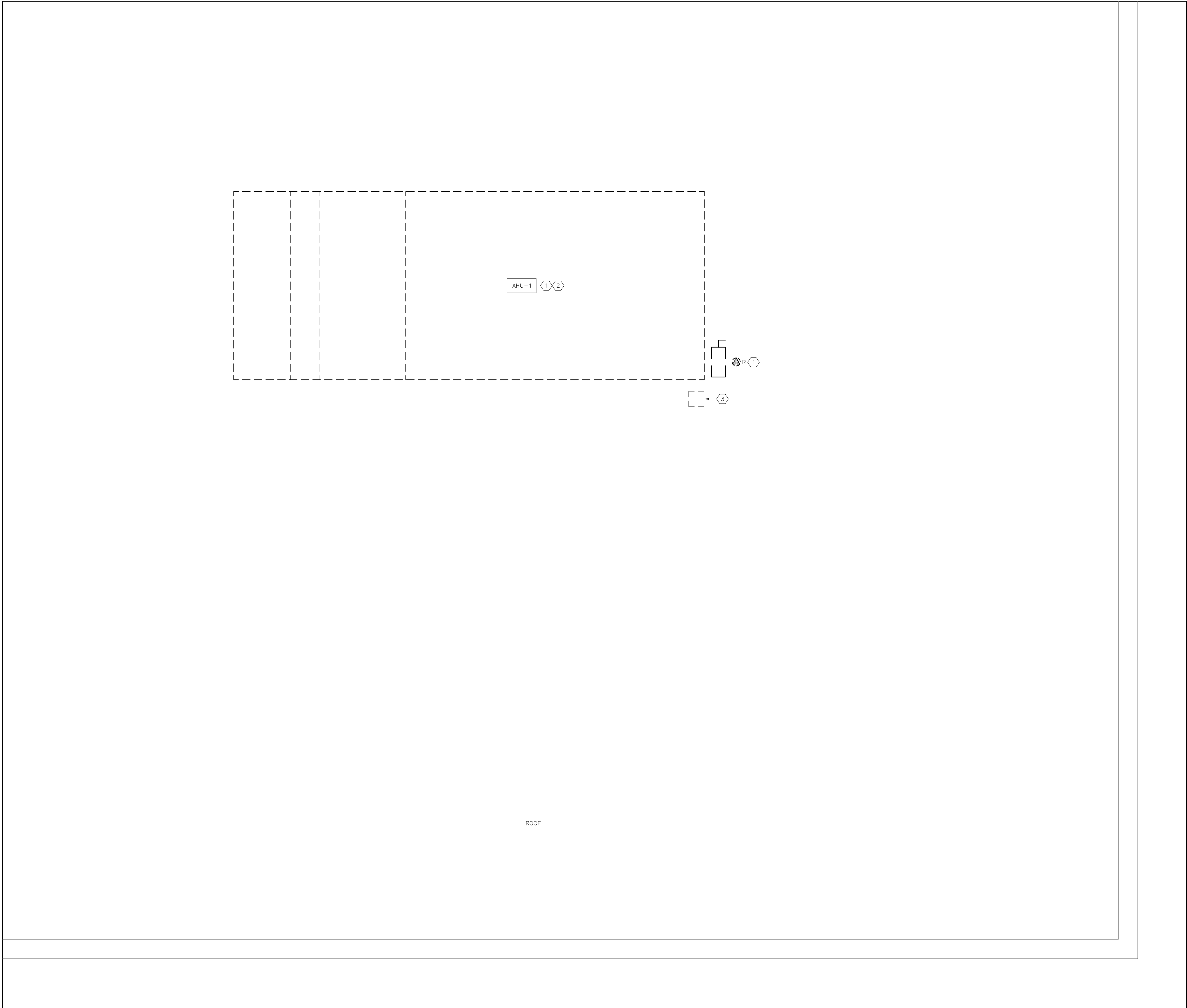
Mechanical & Electrical Consultant:
SURI & ASSOCIATES LTD.
 ENGINEERING CONSULTANTS
 1018 ALBERTSON CRESCENT
 MISSISSAUGA, ONTARIO
 L5H 3C7
 T (905)-290-7861
 ELECTRICAL
 MECHANICAL
 LIGHTING
 COMMUNICATION
 SECURITY



Project
 OAKRIDGE COMMUNITY RECREATIONAL CENTRE
 63 PHARMACY AVENUE,
 TORONTO, ONTARIO. M1L 4S9
 AIR HANDLING UNIT REPLACEMENT

Drawing Title
 KEY PLAN

Checked:	RS	Date:	MAY 2024
Drawn:	RS	Scale:	AS NOTED
File Number:		Dwg Number:	E2



DRAWING NOTES:

- ① REMOVE POWER CONNECTION TO THE EXISTING AIR HANDLING UNIT. TRACE AND VERIFY THE EXISTING POWER SOURCE SERVING THE AIR HANDLING UNIT. REMOVE ALL ASSOCIATED REDUNDANT WIRING/RACEWAYS TO THE RESPECTIVE SOURCE. REMOVE AND DISPOSE OF THE EXISTING EQUIPMENT-MOUNTED LOCAL DISCONNECT SWITCH. REMOVE THE ASSOCIATED BREAKER/SWITCH IN THE EXISTING SOURCE PANEL AND PROVIDE BLANK BREAKER COVERS IN THE RESPECTIVE EXISTING PANEL. REDUNDANT ROOF OPENING/CONE SHALL BE REPAIRED BY THE ROOFING CONTRACTOR. PROVIDE A NEW PRINTED PANEL DIRECTORY.
- ② REMOVE ANY EXISTING FIRE ALARM SHUT-DOWN WIRING TO THE EXISTING AIR HANDLING UNIT IN ENTIRETY. REMOVE ALL REDUNDANT WIRING, RACEWAYS.
- ③ THE MECHANICAL CONTRACTOR SHALL RETAIN THE SERVICES OF THE DESIGNATED ROOFING CONTRACTOR(S) TO REPAIR THE EXISTING ROOF OPENING WHERE THE EXISTING POWER FEED TO THE AIR HANDLING UNIT COMES THROUGH THE ROOF. SEAL, MAKE WATERTIGHT AND MATCH THE EXISTING ROOF CONSTRUCTION. ALL COSTS OF THE ROOFING CONTRACTOR SHALL BE INCLUDED FOR IN THE BASE TENDER PRICE.

GENERAL NOTES :

CONTRACTORS SHALL VERIFY AND BE RESPONSIBLE FOR ALL DIMENSIONS AND CONDITIONS ON THE JOB AND THE ENGINEER SHALL BE INFORMED OF ANY VARIATIONS FROM THE DIMENSIONS AND CONDITIONS SHOWN ON THE DRAWINGS. DO NOT SCALE DRAWINGS. SHOP DRAWINGS SHALL BE SUBMITTED TO THE ENGINEER FOR APPROVAL BEFORE PROCEEDING WITH FABRICATION. THIS DRAWING IS THE PROPERTY OF SURI & ASSOCIATES LTD. AND SHALL NOT BE REPRODUCED WITHOUT THEIR PERMISSION AND UNLESS THE REPRODUCTION CARRIES THEIR NAME. ALL INFORMATION SHOWN ON THIS DRAWING IS FOR USE ON THE SPECIFIED PROJECT ONLY AND SHALL NOT BE USED OTHERWISE WITHOUT WRITTEN PERMISSION OF SURI & ASSOCIATES LTD.

2	ISSUED FOR TENDER	MAY 31/24
1	ISSUED FOR 100% DESIGN REVIEW	MAY 6/24
No.	REVISION	DATE

Contractors shall verify all dimensions at the job.

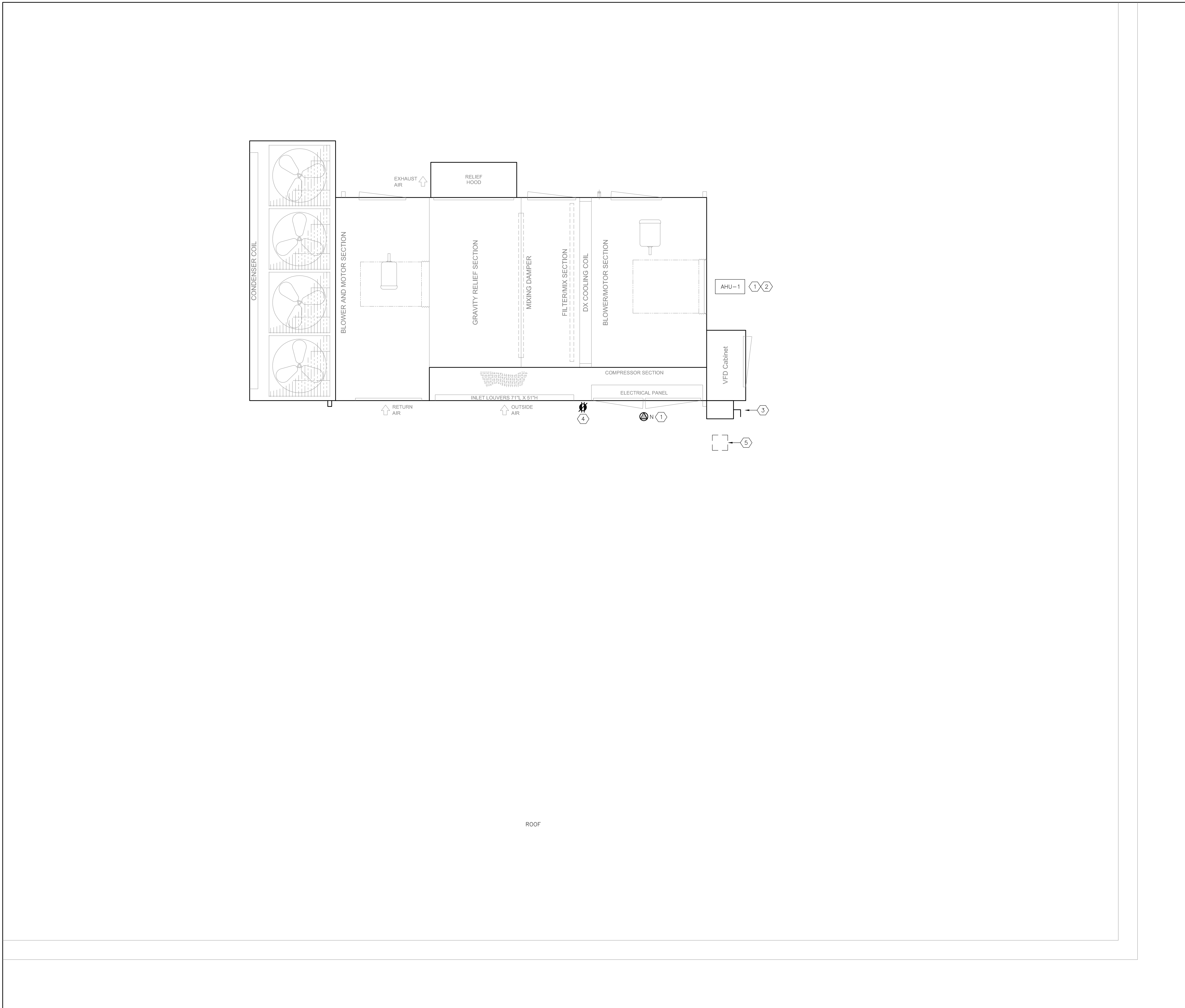
Mechanical & Electrical Consultant:
SURI & ASSOCIATES LTD.
 ENGINEERING CONSULTANTS
 1018 ALBERTSON CRESCENT MISSISSAUGA, ONTARIO L5H 3C7 T (905)-290-7861
 ELECTRICAL MECHANICAL LIGHTING COMMUNICATION SECURITY



Project
 OAKRIDGE COMMUNITY RECREATIONAL CENTRE
 63 PHARMACY AVENUE, TORONTO, ONTARIO. M1L 4S9
 AIR HANDLING UNIT REPLACEMENT

Drawing Title
 EXISTING ELECTRICAL LAYOUT

Checked: RS	Date: MAY 2024
Drawn: RS	Scale: AS NOTED
File Number:	Dwg Number: E3



DRAWING NOTES:

- 1 PROVIDE POWER CONNECTION TO THE NEW AIR HANDLING UNIT UNIT AS SCHEDULED - SEE DRAWING E1. PROVIDE A NEW FEEDER FROM THE MAIN DISTRIBUTION PANEL TO THE AIR HANDLING UNIT. THE UNIT SHALL BE FED FROM A DEDICATED CIRCUIT. ROUTE THE NEW FEEDER THROUGH THE EXISTING CEILING SPACES; FEEDER SHALL BE BROUGHT UP NEAR THE AIR HANDLING UNIT THROUGH A NEW ROOFTOP DOGHOUSE LOCATED IN CLOSE PROXIMITY TO THE NEW AIR HANDLING UNIT. COORDINATE FINAL CONNECTION WITH THE MECHANICAL CONTRACTOR. FINAL CONNECTION TO THE MECHANICAL EQUIPMENT SHALL BE WITH WEATHERTIGHT RACEWAYS. PROVIDE A NEW BREAKER IN THE EXISTING MAIN DISTRIBUTION PANEL FOR THE NEW AIR HANDLING UNIT.
- 2 PROVIDE NEW FIRE ALARM SHUTDOWN SIGNAL TO THE AIR HANDLING UNIT. PROVIDE NEW WIRING/RACEWAYS FROM THE FIRE ALARM CONTROL PANEL TO THE ROOFTOP UNIT. FIRE ALARM FAN SHUTDOWN SHALL SHUTDOWN THE UNIT UPON A GENERAL ALARM. COMPLETE ALL WORK AS PER CAN/ULC-S524 AND VERIFY AS PER CAN/ULC-S537. PROVIDE NEW FAN SHUT DOWN RELAY IN THE EXISTING PANEL. RETAIN THE SERVICES OF MIROCOM FOR ALL FIRE ALARM MATERIAL SUPPLY, PROGRAMMING AND VERIFICATION COSTS. THE MANUFACTURER AND CONTRACTOR SHALL INCLUDE IN THE TENDER PRICE FOR ALL NECESSARY UPGRADES REQUIRED TO THE EXISTING PANEL TO ACCOMMODATE THE NEW FIRE ALARM FAN SHUTDOWN.
- 3 NEW WEATHERPROOF, UNFUSED DISCONNECT SWITCH SUPPLIED BY THE EQUIPMENT MANUFACTURER. WIRE THE NEW ROOFTOP UNIT THROUGH THE UNFUSED DISCONNECT SWITCH.
- 4 NEW 20A, T-SLOT, WEATHERPROOF (GF) SERVICE RECEPTACLE SUPPLIED AND MOUNTED ON THE ROOFTOP UNIT ENCLOSURE BY THE EQUIPMENT MANUFACTURER. CONNECT THE RECEPTACLE TO THE DEDICATED CIRCUIT IN THE MAIN DISTRIBUTION PANEL - SEE KEY PLAN FOR LOCATION. PROVIDE 1 x 15A-1P BREAKER SUITABLE FOR THE EXISTING 'FEDERAL PIONEER' PANEL. PROVIDE NEW WIRING AND CONDUIT FROM THE PANEL TO THE SERVICE RECEPTACLE. RUN CONDUIT THROUGH THE NEW DOGHOUSE (BY THE ROOFING CONTRACTOR).
- 5 PROVIDE A NEW ROOFTOP DOGHOUSE AT THE AIR HANDLING UNIT LOCATION FOR ALL NEW ELECTRICAL AND CONTROLS CONDUITS. ALL ROOFING WORK SHALL BE COMPLETED BY THE ROOFING CONTRACTOR. THE MECHANICAL CONTRACTOR SHALL RETAIN THE SERVICES OF THE DESIGNATED ROOFING CONTRACTOR(S) FOR ALL ROOFING WORK. ALL COSTS OF THE ROOFING CONTRACTOR SHALL BE INCLUDED FOR IN THE BASE TENDER PRICE.

GENERAL NOTES :

CONTRACTORS SHALL VERIFY AND BE RESPONSIBLE FOR ALL DIMENSIONS AND CONDITIONS ON THE JOB AND THE ENGINEER SHALL BE INFORMED OF ANY VARIATIONS FROM THE DIMENSIONS AND CONDITIONS SHOWN ON THE DRAWINGS. DO NOT SCALE DRAWINGS. SHOP DRAWINGS SHALL BE SUBMITTED TO THE ENGINEER FOR APPROVAL BEFORE PROCEEDING WITH FABRICATION. THIS DRAWING IS THE PROPERTY OF SURI & ASSOCIATES LTD. AND SHALL NOT BE REPRODUCED WITHOUT THEIR PERMISSION AND UNLESS THE REPRODUCTION CARRIES THEIR NAME. ALL INFORMATION SHOWN ON THIS DRAWING IS FOR USE ON THE SPECIFIED PROJECT ONLY AND SHALL NOT BE USED OTHERWISE WITHOUT WRITTEN PERMISSION OF SURI & ASSOCIATES LTD.

2	ISSUED FOR TENDER	MAY 31/24
1	ISSUED FOR 100% DESIGN REVIEW	MAY 6/24
No.	REVISION	DATE

Contractors shall verify all dimensions at the job.

SAL Project No.: 24-105

Mechanical & Electrical Consultant:
SURI & ASSOCIATES LTD.
 ENGINEERING CONSULTANTS
 1018 ALBERTSON CRESCENT MISSISSAUGA, ONTARIO L5H 3C7
 T (905)-290-7861
 ELECTRICAL MECHANICAL LIGHTING COMMUNICATION SECURITY



Project
 OAKRIDGE COMMUNITY RECREATIONAL CENTRE
 63 PHARMACY AVENUE, TORONTO, ONTARIO. M1L 4S9
 AIR HANDLING UNIT REPLACEMENT

Drawing Title
 NEW ELECTRICAL LAYOUT

Checked: RS	Date: MAY 2024
Drawn: RS	Scale: AS NOTED
File Number:	Dwg Number: E4

1 ROOF PART PLAN - NEW HVAC PLAN
 E4 SCALE: 1:25