



# Site Review Report

## Project Information

Date: July 5, 2023	Pinchin Representative: Andres Gimenez	Report Number: 01 Pinchin File: 233190.003
Project Name: Type 1 and 2 Asbestos Abatement	Site Address: 13 & 23 Barberrry Place, Toronto, Ontario	
Client: City of Toronto	Client File Number: N/A	
Contractor: The BearStar Group Inc.	Arrival on Site: 9:30 AM Number of Workers: 3	

## Distribution:

cc:	Sara Reid	City of Toronto	Sara.Reid@toronto.ca
	Inder Bhamra	City of Toronto	inder.bhamra@toronto.ca
	Anthony Ghazalian	The BearStar Group Inc.	anthony@bearstargroup.com
	Andres Gimenez	Pinchin Ltd.	agimenez@pinchin.com

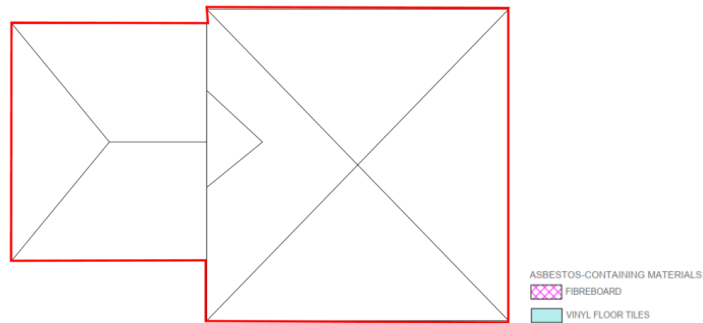
## Description of Work in Progress

Material	Work Area	Work in Progress	Type of Review	Status
Asbestos	Work Area 1: 23 Barberrry Place	O.Reg. 278/05 Type 1 removal of asbestos-containing vinyl floor tiles concealed under wood flooring, fiberboard insulation present at heating registers, and exterior caulking.	Clean Site Preparation  Bulk Removal	Acceptable
Asbestos	Work Area 2: 13 Barberrry Place	O.Reg. 278/05 Type 2 removal of non-asbestos ceramic floor tiles and associated asbestos-containing levelling compound only using power tools with effective HEPA filter dust collection device.	Clean Site Preparation	Acceptable

<b>Discussion Points and Action Items</b>	<b>Work Area 1: 23 Barberrry Place:</b> <ul style="list-style-type: none"><li>- Removal of asbestos-containing vinyl floor tiles and associated non-asbestos mastic within Locations 9 and 10 has been completed. As communicate by the Abatement Contractor, approximately 100 square feet of asbestos-containing vinyl floor tiles was found concealed under wood flooring within Location 4. This material was also planned to be removed.</li><li>- Removal of asbestos-containing fiberboard insulation present at heating registers was commenced within the Ground Floor. Fiberboard insulation has been removed from approximately 5 registers.</li><li>- Areas (door and window frames and roof flashings) where asbestos-containing exterior caulking needs to be removed were shown to the Abatement Contractor.</li></ul>
	<b>Work Area 2: 13 Barberrry Place:</b> <ul style="list-style-type: none"><li>- Type 2 enclosure was constructed within Location 8. An upper ceiling was constructed to isolate the abatement area from the 2<sup>nd</sup> Floor and the Stairwell.</li></ul>

**Observations – Work Area 1: 23 Barberry Place**

<b>Site Isolation &amp; Facilities/Equipment</b>	Acceptable	A polyethylene flap was placed at the entrance to Location 9. An asbestos warning sign was posted on the polyethylene flap.
<b>Personal Protective Equipment</b>	Acceptable	Workers were donning half-faced respirators equipped with P-100 filters, and safety boots.
<b>Dust Suppression</b>	Acceptable	Dust was suppressed using amended water, non-powered hand tools, and a HEPA vacuum.
<b>Cleaning</b>	Acceptable	Asbestos-containing vinyl floor tiles were wetted with amended water and removed using non-powered scrapers/ hand tools. Once the tiles were removed the floor was cleaned with a HEPA vacuum.
<b>Waste Handling</b>	Acceptable	All waste generated during the abatement has been placed in asbestos waste bags, double bagged, and sealed shut with tape. All asbestos waste was removed from site and disposed of by the contractor.
<b>Other</b>	Acceptable	Pre-contamination and Bulk Removal visual site review was acceptable. Pinchin informed the contractor they can continue with the abatement. Pinchin will return for final visual clearance.



Abatement Work Area, Highlighted in Red



Post abatement (abated VFT) view, Location 10.



Post abatement (abated VFT) view, Location 9.



Post abatement (abated fiberboard insulation) view, Location 9.



Post abatement (abated fiberboard insulation) view, Location 8.



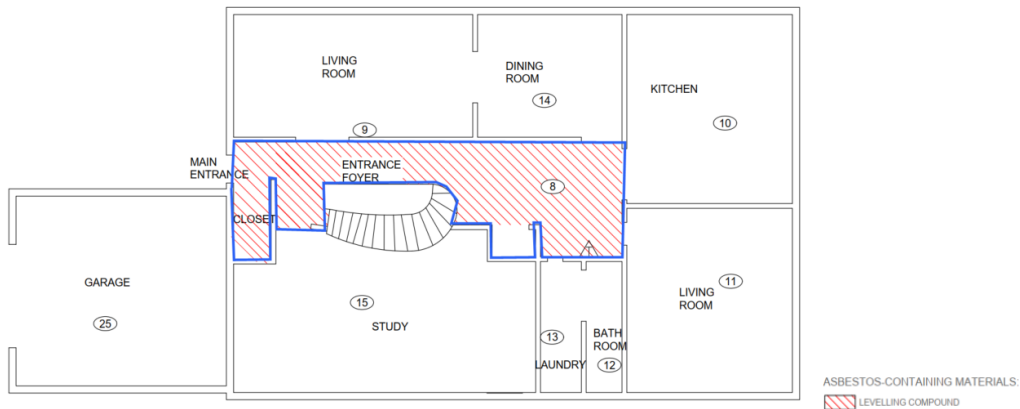
Asbestos-containing VFT concealed under wood flooring, Location 4.



Asbestos-containing VFT concealed under wood flooring, Location 4.

**Observations – Work Area 2: 13 Barberry Place (Location 8)**

<b>Site Isolation &amp; Facilities/Equipment</b>	<b>Acceptable</b>	A Type 2 enclosure was constructed using 6-mil rip-proof white polyethylene sheeting and sealed with the duct tape. All seams are intact with no rips or tears noted during the site review. Openings that were to remain in place were protected with polyethylene sheeting which was taped and sealed well. An upper ceiling was constructed using 6-mil rip-proof white polyethylene sheeting and sealed with the duct tape to isolate the abatement area from the 2 <sup>nd</sup> Floor and the Stairwell.  The entrance to the enclosure has been constructed with double-flapped doors providing adequate seals.
	<b>Acceptable</b>	Appropriate asbestos warning signage is posted at the entrance of the enclosure to denote an asbestos dust hazard.
<b>Negative Pressure</b>	<b>Acceptable</b>	One negative air pressure unit was installed as part of the enclosure, exhausting filtered air out of the enclosures.
<b>Personal Protective Equipment</b>	<b>Acceptable</b>	Once the abatement work is underway, all abatement workers entering or within the enclosure are required to wear the appropriate personal protective equipment (PPE) required for the job, consisting of, but not limited to, safety work boots, hard hats, disposable coveralls (e.g. Tyvek suites) and NIOSH approved full face non-powered respirators with P-100 filters.
<b>Dust Suppression</b>	<b>Acceptable</b>	HEPA vacuums and amended water to be used during work and for the purposes of cleaning.
<b>Waste Handling</b>	<b>Acceptable</b>	All waste generated during abatement is to be disposed of in yellow asbestos-waste bags, double bagged, sealed, and wiped down prior to removal from the Type 2 enclosures.
<b>Other</b>	<b>Acceptable</b>	Pre-contamination visual site review was acceptable. Pinchin informed the contractor they can proceed with the abatement. Pinchin will return for final visual clearance.



Abatement Work Area, Highlighted in Blue



Enclosure entrance with posted asbestos warning sign, Location 8.



Enclosure entrance, Location 8



General view within enclosure, Location 8.



View of one D air unit exhausting air out of the enclosure, Location 8.



Ceramic floor tile and concealed asbestos-containing levelling compound to be abated, Location 8.



General view within enclosure, Location 8.