



# Site Review Report

## Project Information

Date: August 16, 2023	Pinchin Representative: Andres Gimenez	Report Number: 05 Pinchin File: 233190.004
Project Name: Type 3 Asbestos Abatement	Site Address: 23 Barberry Place, Toronto, Ontario	
Client: City of Toronto	Client File Number: N/A	
Contractor: The BearStar Group Inc.	Arrival on Site: 3:00 PM Number of Workers: 4	

## Distribution:

cc:	Sara Reid	City of Toronto	Sara.Reid@toronto.ca
	Inder Bhamra	City of Toronto	inder.bhamra@toronto.ca
	Anthony Ghazalian	The BearStar Group Inc.	anthony@bearstargroup.com
	Andres Gimenez	Pinchin Ltd.	agimenez@pinchin.com

## Description of Work in Progress

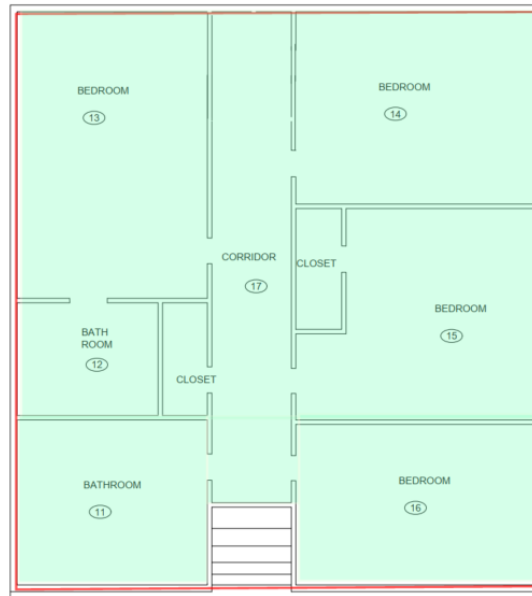
Material	Work Area	Work in Progress	Type of Review	Status
Asbestos	Work Area 1: 23 Barberry Place	O.Reg. 278/05 Type 3 removal of hardwood flooring and concealed asbestos-containing white paper insulation.	Visual Clearance	Acceptable

<b>Discussion Points and Action Items</b>	<p>The visual clearance inspection was acceptable. Removal of ACM throughout the Work Area was conducted following all Type 3 abatement requirements outlined in Ontario Asbestos Regulation O.Reg 275/05. Pinchin informed the contractor they can proceed with applying lockdown prior to the removal of the enclosure. Further clearance will not be required for this project.</p> <p>Visible mould growth was noted on approximately 150 square feet of plywood floor within Bedroom (Location 13).</p> <p>Asbestos-containing insulation was not present within washroom in Location 12.</p>
---	--

## Observations – Work Area 1: 23 Barberry Place

<b>Site Isolation &amp; Facilities/Equipment</b>	<b>Acceptable</b>	<p>The enclosure remained constructed using 6-mil rip-proof white polyethylene sheeting and sealed with the duct tape. All seams remained intact, no rips or tears were noted during the inspection. Openings on ceiling and floors remained protected with polyethylene sheeting.</p> <p>The entrance decontamination unit to the enclosure remained constructed with double-flapped doors providing adequate seals through each chamber. A running shower with hold water remained present in the decontamination area and operational at the time of the inspection.</p> <p>Openings on ceiling on the ground floor remained covered with 6-mil rip-proof white polyethylene sheeting and sealed with the duct to tape to meet negative pressure within the enclosure on the 2<sup>nd</sup> Floor.</p> <p>Appropriate asbestos warning signage and Notice of Project remained</p>
--	-------------------	--

		posted at the entrance to the enclosure.
<b>Negative Pressure</b>	Acceptable	Three (3) negative air pressure units remained installed exhausting filtered air out of the enclosure. The negative air pressure units were D.O.P. tested and certified on August 14, 2023.
<b>Personal Protective Equipment</b>	Acceptable	All abatement workers entering or within the enclosure were required to wear the appropriate personal protective equipment (PPE) required for the job including, but not limited to, safety work boots, hard hats, disposable coveralls (e.g. Tyvek suites) and NIOSH approved full face respirators with P-100 filters.
<b>Dust Suppression</b>	Acceptable	HEPA vacuums and amended water were used during work and for the purposes of cleaning. Waste was cleaned and bagged frequently throughout the work.
<b>Cleaning</b>	Acceptable	Enclosure was observed free of visible dust and debris. All surfaces not covered in polyethylene sheeting were cleaned and free of any visible dust or debris.
<b>Waste Handling</b>	Acceptable	Asbestos-labelled waste bags were being used to double-bag and to dispose of waste. Waste was disposed of by the contractor in accordance with R.R.O. 1990, Reg 347.
<b>Other</b>	Acceptable	The visual clearance inspection was acceptable. Pinchin informed the contractor they can proceed with applying lockdown prior to the removal of the enclosure. Further clearance will not be required for this project.



Abated Area, 2<sup>nd</sup> Floor Abatement Work Area, Highlighted in Red



Asbestos warning sign posted on the entrance to the enclosure and manometer.



Abated asbestos-containing paper insulation and original hardwood flooring, Corridor, Location 17.



Abated asbestos-containing paper insulation and original hardwood flooring, Bedroom, Location 13.



Abated asbestos-containing paper insulation and original hardwood flooring, Bedroom, Location 14.



Abated asbestos-containing paper insulation and original hardwood flooring, Bedroom, Location 15.



Abated asbestos-containing paper insulation and original hardwood flooring, Bedroom, Location 16.



Abated asbestos-containing paper insulation and original hardwood flooring, Corridor's Closet, Location 17.



Abated asbestos-containing paper insulation and original hardwood flooring, Bathroom, Location 11.



Visible mould growth was observed on plywood floor, Bedroom, Location 13.