



Site Review Report

Project Information

Date: July 7, 2023	Pinchin Representative: Andres Gimenez	Report Number: 02 Pinchin File: 233190.003
Project Name: Type 1 and 2 Asbestos Abatement	Site Address: 13 & 23 Barberrry Place, Toronto, Ontario	
Client: City of Toronto	Client File Number: N/A	
Contractor: The BearStar Group Inc.	Arrival on Site: 4:30 PM Number of Workers: 4	

Distribution:

cc:	Sara Reid	City of Toronto	Sara.Reid@toronto.ca
	Inder Bhamra	City of Toronto	inder.bhamra@toronto.ca
	Anthony Ghazalian	The BearStar Group Inc.	anthony@bearstargroup.com
	Andres Gimenez	Pinchin Ltd.	agimenez@pinchin.com

Description of Work in Progress

Material	Work Area	Work in Progress	Type of Review	Status
Asbestos	Work Area 1: 23 Barberrry Place	O.Reg. 278/05 Type 1 removal of asbestos-containing vinyl floor tiles concealed under wood flooring, fiberboard insulation present at heating registers, and exterior caulking.	Visual Clearance	Acceptable
Asbestos	Work Area 2: 13 Barberrry Place	O.Reg. 278/05 Type 2 removal of non-asbestos ceramic floor tiles and associated asbestos-containing levelling compound only using power tools with effective HEPA filter dust collection device.	Visual Clearance	Acceptable

Discussion Points and Action Items

Work Area 1: 23 Barberrry Place:

Clearances:

- Visual clearance for the removal of asbestos-containing vinyl floor tiles and associated non-asbestos mastic within Locations 4, 9 and 10 was acceptable.
- Visual clearance for the removal of asbestos-containing fiberboard insulation present at 15 heating registers was commenced within the Upper and Lower Ground Floor and Second Floor was acceptable.
- Visual clearance for the removal of asbestos-containing exterior caulking, present on roof flashing, wood sidings, and door and window frames, was acceptable.

New Findings:

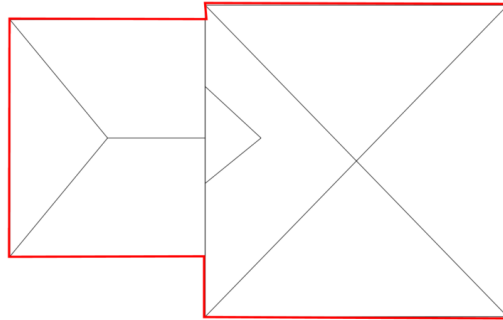
- Black paper insulation was found concealed behind wood siding present at the front of the building. This material was not observed during the original assessment. Three (3) samples were collected and submitted to the lab to be analysed for asbestos content, based on a

	<p>Rush TAT as authorized by the City of Toronto.</p> <ul style="list-style-type: none"> - White paper insulation was found concealed under a second layer of wood flooring (original hardwood flooring) during the removal of the heating registers within Locations 14 and 15 on the 2nd Floor. This material was not observed during the original assessment. Three (3) samples were collected and submitted to be analysed for asbestos content based on a Rush TAT as authorized by the City of Toronto. <p>Work Area 2: 13 Barberry Place:</p> <ul style="list-style-type: none"> - Visual clearance for the removal of non-asbestos ceramic floor tiles and associated asbestos-containing levelling compound was acceptable. Flooring finishes were removed down to the plywood layer.
--	--

Observations – Work Area 1: 23 Barberry Place

Dust Suppression	Acceptable	Dust was suppressed using amended water, non-powered hand tools, and a HEPA vacuum.
Cleaning	Acceptable	Asbestos-containing vinyl floor tiles were wetted with amended water and removed using non-powered scrapers/ hand tools. Once the tiles were removed the floor was cleaned with a HEPA vacuum.
Waste Handling	Acceptable	All waste generated during the abatement was placed in asbestos waste bags, double bagged, and sealed shut with tape. All asbestos waste was removed from site and disposed of by the contractor.
Other	Acceptable	Visual Clearance site review was acceptable. Analytical results associated with concealed black paper insulation and white paper insulation observed within the building during the abatement will be communicated to the City of Toronto as soon as lab results are available.





ASBESTOS-CONTAINING MATERIALS:
FIBREBOARD
VINYL FLOOR TILES
ABATED MATERIAL

Abatement Work Area, Highlighted in Red



Post abatement (abated caulking) view, Wood Siding, Exterior.



Post abatement (abated caulking) view, Garage Door, Exterior.



Post abatement (abated caulking) view, Roof Flashing, Exterior.



Post abatement (abated caulking) view, Roof Flashing, Exterior.



Post abatement (abated VFT) view, Location 4.



Post abatement (abated fiberboard insulation) view, Floor Register.



Post abatement (abated fiberboard insulation) view, Floor Register.



Post abatement (abated fiberboard insulation) view, Floor Register.



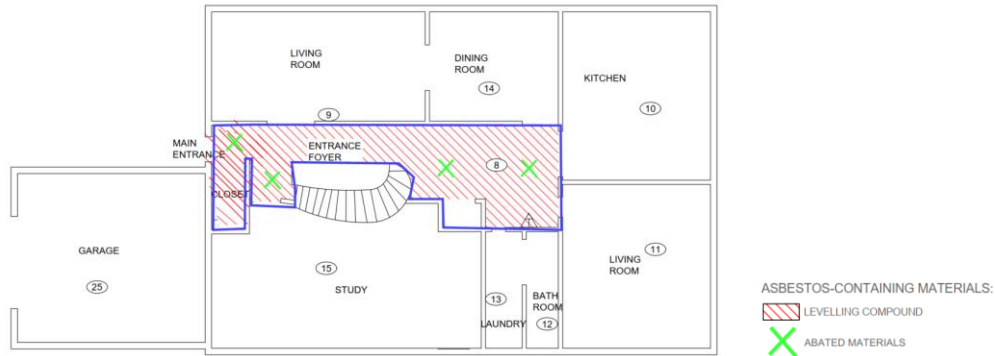
White paper insulation found under original hardwood flooring, Location 14.



Black paper insulation behind wood siding, Exterior.

Observations – Work Area 2: 13 Barberry Place (Location 8)

Site Isolation & Facilities/Equipment	Acceptable	A Type 2 enclosures remained constructed using 6-mil rip-proof white polyethylene sheeting and sealed with the duct tape. All seams remained intact with no rips or tears noted during the site review. The entrance to the enclosure remained constructed with double-flapped doors providing adequate seals.
	Acceptable	Appropriate asbestos warning signage remained posted at the entrance of the enclosure to denote an asbestos dust hazard.
Negative Pressure	Acceptable	One negative air pressure unit remained installed as part of the enclosure, exhausting filtered air out of the enclosures.
Personal Protective Equipment	Acceptable	All abatement workers entering or within the enclosure were required to wear the appropriate personal protective equipment (PPE) required for the job, consisting of, but not limited to, safety work boots, hard hats, disposable coveralls (e.g. Tyvek suites) and NIOSH approved full face non-powered respirators with P-100 filters.
Dust Suppression	Acceptable	HEPA vacuums and amended water were used during work and for the purposes of cleaning.
Waste Handling	Acceptable	All waste generated during abatement was disposed of in yellow asbestos-waste bags, double bagged, sealed, and wiped down prior to removal from the Type 2 enclosures.
Other	Acceptable	Visual clearance review was acceptable. Pinchin informed the contractor they can proceed with dismantling the enclosure.



Abatement Work Area, Highlighted in Blue



Enclosure entrance with posted asbestos warning sign, Location 8.



General view within enclosure, Location 8.



Post abatement view, Location 8



Post abatement view, Location 8