



ADDENDUM # 1

Request for Tender

for

Owen Sound Hospital – Lab Flooring Replacement – Phases 3-6

Reference Number: 217376

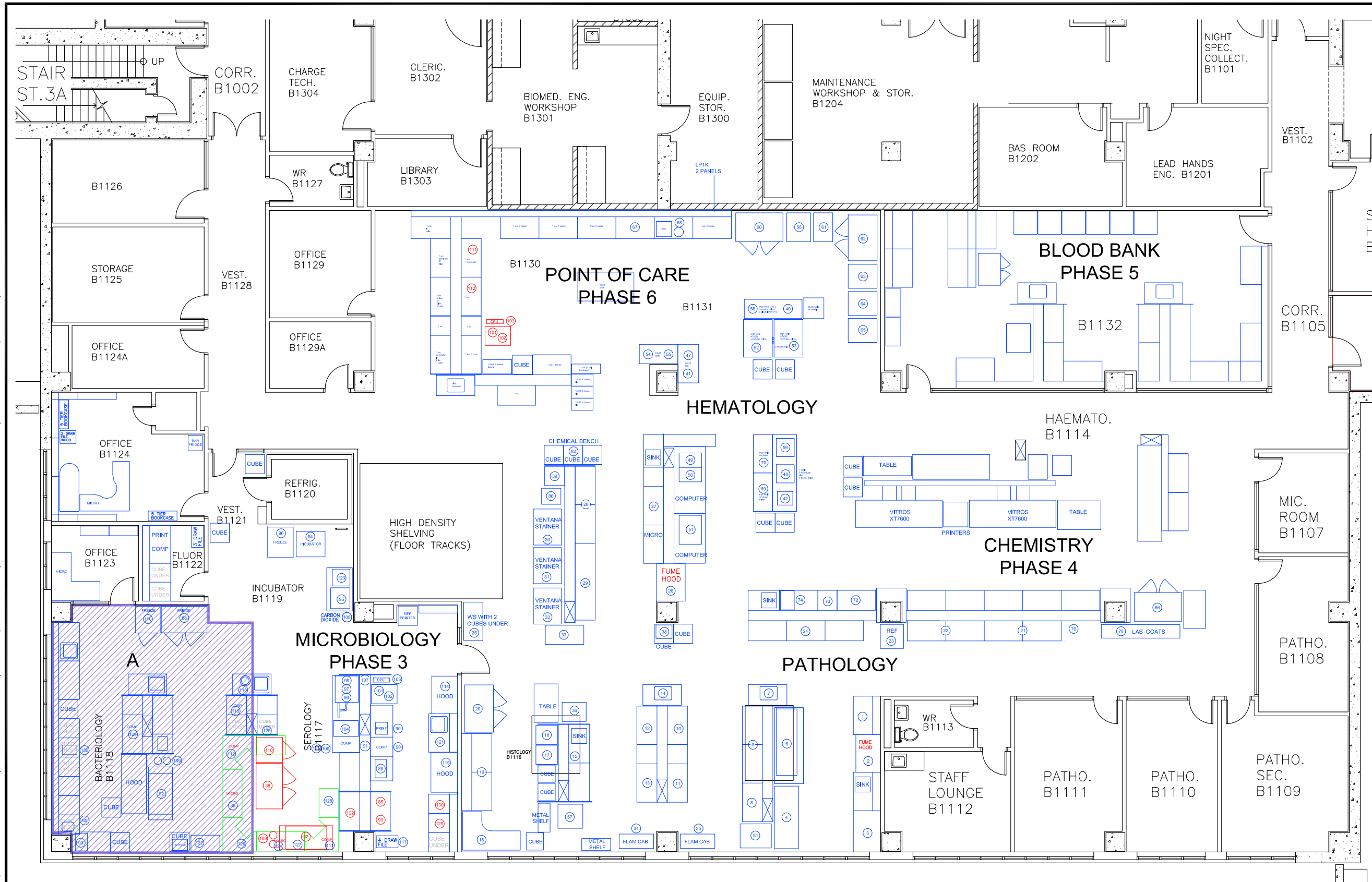
Issue Date: *July 10, 2024*

This Addendum is issued in accordance with RFT Section 2.7 and amends the RFT Documents as set out below.

Such revisions shall become part of the RFT Documents, and shall change the original RFT Documents only in the manner and extent stated.

1. REPLACE Drawings A2-A5 dated May 13, 2024 with attached Drawings A2-A4 dated July 8, 2024. Phase 3 will now be completed in three (3) sub-phases rather than the originally proposed four (4).

July 9, 2024 K:\1. ENGINEERING ADMIN\1. TEAM LEADERS SHARED DRIVE\CAPITAL-OPERATING PROJECTS\OWEN SOUND\CURRENT PROJECTS\22030 - FLOORING REPLACEMENT - OS LAB1 - SCOPE & PLANNING\FLOOR PLANS\LAB FLOORING - PHASE 2 - 6.DWG



- 85 RELOCATE AS NOTED
 - 88 RELOCATE AS NOTED
 - 92 RELOCATE AS NOTED
 - 93 RELOCATE AS NOTED
 - 109 RELOCATE AS NOTED
 - 110 RELOCATE AS NOTED
 - 129 RELOCATE AS NOTED
 - 130 RELOCATE AS NOTED
 - 101 TO BE RELOCATED AT START OF PHASE 3A AND MOVED BACK AFTER COMPLETION OF PHASE 3B
 - 102
 - 103
 - 111 RELOCATE AS NOTED. BRIGHTSHORES TO RUN NET WORK DROPS FOR EPICEUTER
 - 112 RELOCATE AS NOTED. BRIGHTSHORES TO RUN NET WORK DROPS FOR EPICEUTER
- ALL SUPPLIES AND REAGENTS IN THIS AREA WILL BE MOVED BY LAB
- ALL CUPBOARDS / CUBES CAN BE MOVED TO STORAGE AND RETURNED UPON COMPLETION OF THIS PHASE
- ANAEROBIC CHAMBER (92)
- DISCONNECT FROM N2 AND RUN COMPLETELY OFF MIXED GAS. EMERGENCY POWER.
- TO BE DISASSEMBLED AND MOVED TO STORAGE AS PART OF PHASE 3A AND WILL NOT BE MOVED BACK UNTIL THE END OF PHASE 3C

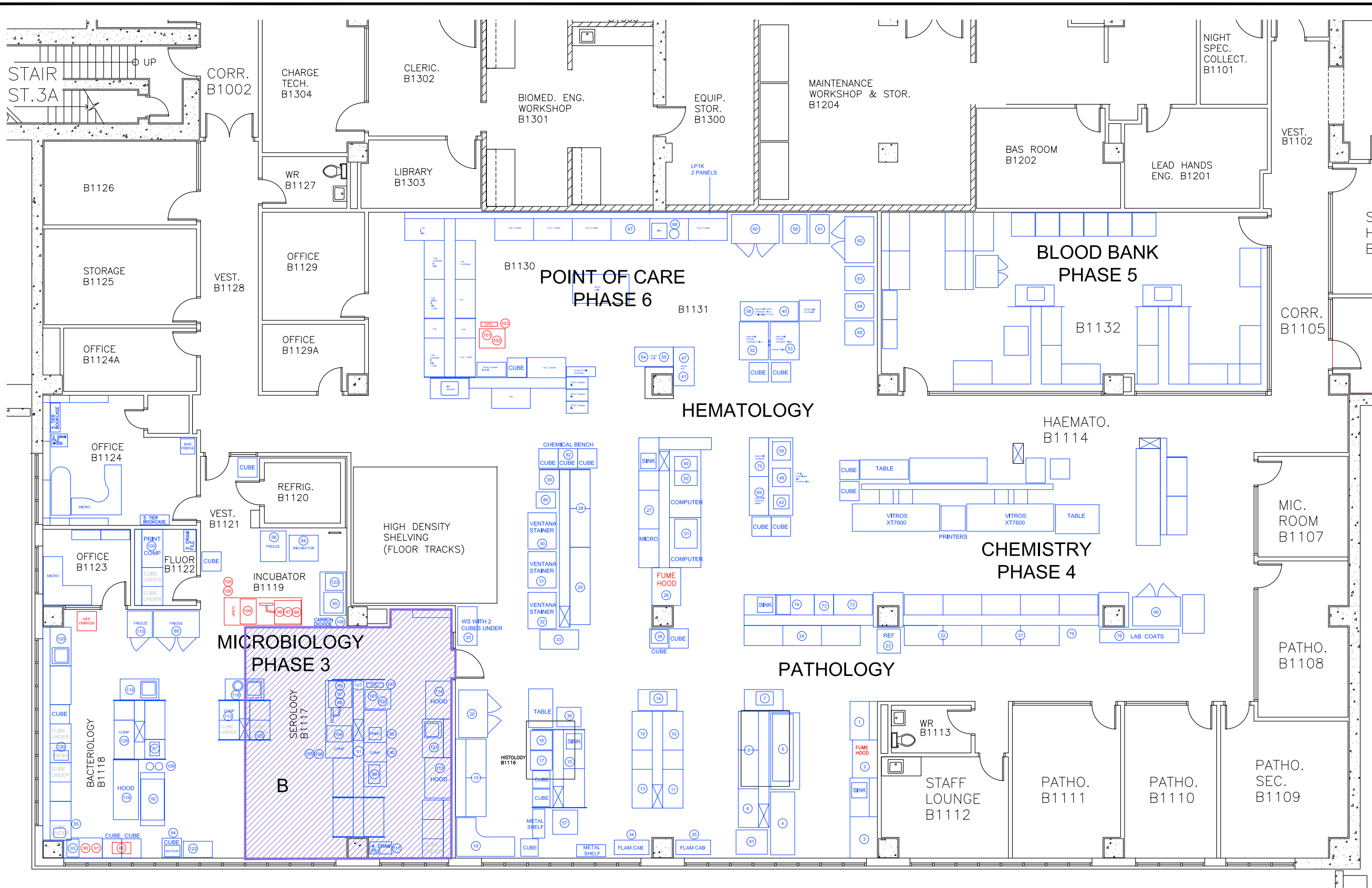
| | |
|------------|-------------------|
| 2024.07.08 | PHASE 3A REVISION |
| Date | Revision |



**OWEN SOUND LAB
FLOORING REPLACEMENT
PHASE 3A**

Date: May 13-24
 Scale: 1 : 125
 Drawn: D K R
 Drawing No. A2

July 9, 2024 K:\1. ENGINEERING ADMIN\1. TEAM LEADERS SHARED DRIVE\CAPITAL-OPERATING PROJECTS\OWEN SOUND\CURRENT PROJECTS\22030 - FLOORING REPLACEMENT - 05 LAB\1 - SCOPE & PLANNING\FLOOR PLANS\LAB FLOORING - PHASE 2 - 6.DWG



- 89 RELOCATE AS NOTED. SHOULD BE ABLE TO SIT ON 2 STORAGE CUBES
 - 90 RELOCATE AS NOTED
 - 91 RELOCATE AS NOTED
 - 97 RELOCATE AS NOTED. NETWORK DROPS REQUIRED (BRIGHTSHORES)
 - 98 RELOCATE AS NOTED
 - 99 RELOCATE AS NOTED
 - 104 RELOCATE AS NOTED. NETWORK DROPS REQUIRED (BRIGHTSHORES)
 - 105 RELOCATE AS NOTED
 - 106 RELOCATE AS NOTED
- MFP PRINTER - RELOCATE AS NOTED
MFP PRINTER - RELOCATE AS NOTED
- TABLE FOR 89/90 TO BE PLACED IN STORAGE UNTIL PHASE IS COMPLETE.

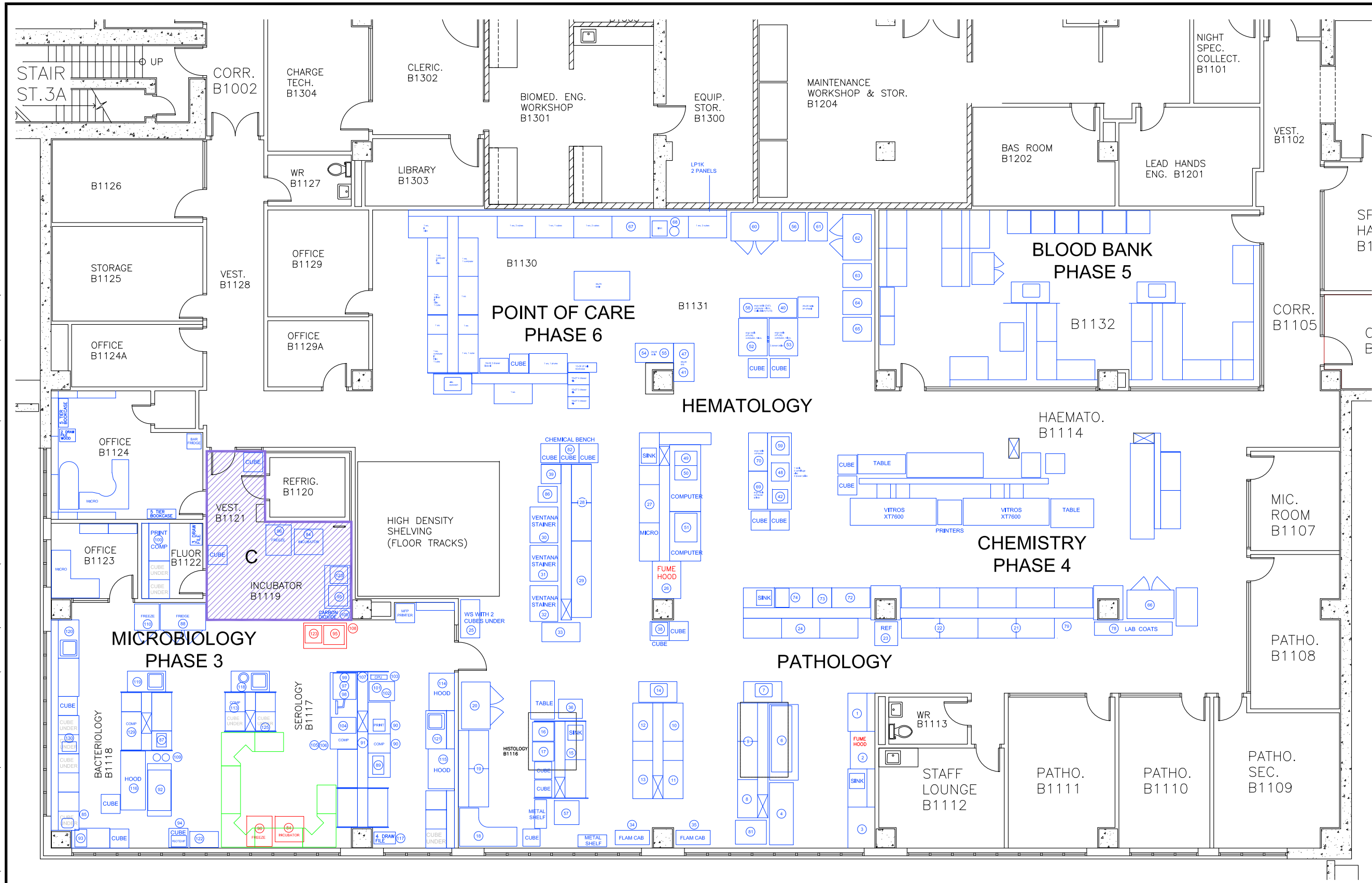
| | |
|------------|-------------------|
| 2024.07.08 | PHASE 3B REVISION |
| Date | Revision |



**OWEN SOUND LAB
FLOORING REPLACEMENT
PHASE 3B**

Date: May 13-24
Scale: 1 : 125
Drawn: D K R
Drawing No. **A3**

July 9, 2024 K:\1. ENGINEERING ADMIN\1. TEAM LEADERS SHARED DRIVE\CAPITAL-OPERATING PROJECTS\OWEN SOUND\CURRENT PROJECTS\22030 - FLOORING REPLACEMENT - 05 LAB\1 - SCOPE & PLANNING\FLOOR PLANS\LAB FLOORING - PHASE 2 - 0.DWG



- 84 RELOCATE AS NOTED.
 - 96 RELOCATE AS NOTED
 - 95 RELOCATE AS NOTED
 - 108 RELOCATE AS NOTED
 - 123 RELOCATE AS NOTED
- ALL ADDITIONAL SUPPLIES IN THIS AREA WILL BE RELOCATED BY LAB STAFF
- TO BE MOVED BACK INTO SPACE AND REASSEMBLED

| | |
|------------|-------------------|
| 2024.07.08 | PHASE 3C REVISION |
| Date | Revision |



**OWEN SOUND LAB
FLOORING REPLACEMENT
PHASE 3C**

Date: May 13-24
 Scale: 1 : 125
 Drawn: D K R
 Drawing No.: A4