

LIST OF DRAWINGS

S001	GENERAL NOTES AND SPECIFICATIONS
S201	PLANS, ELEVATION, SECTION AND DETAIL
S202	ELEVATIONS, SECTIONS, AND DETAILS

LADDER DESIGN AND CONSTRUCTION NOTES

GENERAL

- ALL MATERIALS AND WORKMANSHIP SHALL CONFORM TO THE REQUIREMENTS OF THE ONTARIO BUILDING CODE.
- COMPLY WITH THE OCCUPATIONAL HEALTH AND SAFETY ACT FOR CONSTRUCTION PROJECTS.
- USE ONLY TOOLS AND EQUIPMENT APPROVED BY CITY OF PICKERING FOR USE IN CITY FACILITIES.
- THE WORK WILL BE PERFORMED AROUND EXISTING EQUIPMENT AS WELL AS MUNICIPAL WORKERS AND EMERGENCY RESPONDERS AND THEIR EQUIPMENT. EXERCISE EXTREME CAUTION AND COMPLY WITH OWNERS FACILITY AND SAFETY PROTOCOLS.
- THE BUILDING WILL REMAIN IN OPERATION DURING CONSTRUCTION. PROVIDE ALL NECESSARY PROTECTION INCLUDING SAFETY FENCING, HOARDING, RAILINGS AND OTHER SAFETY DEVICES DURING THE COURSE OF THE WORK TO PROTECT ALL OPENINGS.
- BE RESPONSIBLE FOR ANY DAMAGE TO EXISTING BUILDINGS AND EQUIPMENT AND REPAIR SAME TO THE SATISFACTION OF THE OWNER AND CONSULTANT.
- MAINTAIN THE SITE IN A CLEAN AND ORDERLY CONDITION AT ALL TIMES AND TO THE SATISFACTION OF THE OWNER.
- CONTACT THE CONSULTANT IF SITE CONDITIONS VARY SIGNIFICANTLY FROM THE DRAWINGS.
- WORK INCLUDES DEMOLITION, DISMANTLING AND REMOVAL FROM SITE OF EXISTING LADDERS AND CONNECTIONS WHERE INDICATED. REMOVE AND DISPOSE OF EXISTING MATERIALS IN ACCORDANCE WITH REQUIREMENTS OF REGULATORY AUTHORITIES AND AGENCIES.
- COMPLETE ALL CUTTING AND PATCHING AS NECESSARY TO REMOVE EXISTING MATERIALS AND EQUIPMENT.
- PATCH ALL HOLES RESULTING FROM DEMOLITION WITH NON-SHRINK GROUT, CONCRETE OR MASONRY TO MATCH EXISTING AND WHERE REQUIRED.
- CLEAN EXISTING STEEL STRUCTURES TO BE WELDED BY GRINDING EXISTING STEEL GRATINGS AND FRAMES PRIOR TO WELDING.
- TOUCH UP WELDS WITH ZINC RICH PAINT.
- SITE VERIFY ALL DIMENSIONS AND CONDITIONS.

SHOP DRAWINGS:

- SUBMIT SHOP AND ERECTION DRAWINGS FOR REVIEW.
- VERIFY SITE DIMENSIONS BEFORE PROCEEDING WITH SHOP FABRICATION AND TO SUIT FIELD CONDITIONS AND FIELD OPENINGS.
- SHOW AND DESCRIBE IN DETAIL ALL THE WORK OF THIS SECTION INCLUDING LARGE SCALE DETAIL OF MEMBERS AND MATERIALS, OF CONNECTION AND JOINTING DETAILS, AND OF ANCHORAGE DEVICES, DIMENSIONS, GAUGES, THICKNESSES, DESCRIPTION OF MATERIALS, METAL FINISHING, AS WELL AS ALL OTHER PERTINENT DATA AND INFORMATION, INCLUDING TYPE, SIZE AND DESCRIPTION OF ALL FASTENERS AND ANCHORS.
- INDICATE CONNECTIONS TO BUILDING STRUCTURE.
- SHOP DRAWINGS FOR LADDERS AND CONNECTIONS SHALL BE STAMPED AND SIGNED BY A PROFESSIONAL ENGINEER REGISTERED IN THE PROVINCE OF ONTARIO. EACH SUBMISSION OF THE SHOP DRAWINGS SHALL BEAR THE SEAL OF THE ENGINEER. STAMPS MARKED "FOR CONSTRUCTION ONLY" WILL NOT BE ACCEPTED.
- SITE VERIFY EXISTING DIMENSIONS AND CONDITIONS AND DESIGN LADDERS AND CONNECTIONS TO SUIT.
- DESIGN METAL LADDER CONSTRUCTION AND CONNECTIONS TO OBC VERTICAL AND HORIZONTAL LIVE LOAD REQUIREMENTS.
- DESIGN SERVICE ACCESS LADDERS TO MINISTRY OF LABOUR REQUIREMENTS.
- ALL ACCESS LADDERS SHALL BE DESIGNED WITH THE MINIMUM REQUIREMENTS FROM THE DRAWINGS AND ONTARIO BUILDING CODE MMAH SUPPLEMENTARY STANDARD SB-8, WHICHEVER IS MORE STRINGENT. THIS SHALL INCLUDE THROUGH-BOLTING ANCHORS AT MASONRY WALLS.

MATERIALS

- STEEL: CSA C40.20-04/C40.21-04 (R2009), GRADE 300W.
- SHEET STEEL: (COMMERCIAL QUALITY) ASTM A1008/A1008M-12, STRETCHER LEVELLED OR TEMPER ROLLED.
- MACHINE BOLTS AND NUTS: ASTM STANDARD A307-10 LOW CARBON STEEL EXTERNALLY AND INTERNALLY THREADED STANDARD FASTENERS. DIMENSIONS, SIZES, THREAD, STRENGTH, QUALITY AND TYPE OF ITEMS SHALL BE DESIGNED FOR THE WORK INTENDED. EXPOSED FASTENERS AND ANCHORS SHALL BE SAME MATERIAL, COLOUR AND FINISH AS THE METAL TO WHICH THEY ARE APPLIED.
- WELDING MATERIALS: CSA W59.
- WELDING ELECTRODES: CSA W48 SERIES.
- ISOLATION COATING: ALKALI RESISTANT BITUMINOUS PAINT TO CAN/CSSB 1,108-M89.
- STEEL GRATING AT LADDER PLATFORMS: WELDED STEEL, SERRATED BEARING BARS SHALL BE 4.5 X 32 MM AT 30 MM CENTRES. TYPE WB AS MANUFACTURED BY BORDEN METAL PRODUCTS LTD. OR AMICO 11-4-W. GALVANIZED AT EXTERIOR LOCATIONS.
- ADHESIVE ANCHORS: HILTI OR RAWL EPOXY ADHESIVE ANCHORS SIZED TO SUIT LOADING CONDITIONS, SUITABLE FOR SUBSTRATE. ADHESIVE TO BE LOW VOC TYPE (MAXIMUM 250 G/L) TO SCAQMD RULE 1168-03, ADHESIVES AND SEALANTS APPLICATIONS.
- PRIMERS: ALL PRIMERS FOR METAL FABRICATIONS ARE TO BE FACTORY APPLIED.
- GALVANIZING: HOT DIPPED WITH ZINC COATING TO CAN/CSA C164-M92 (R2003), OR ASTM A123/A123M-12 STANDARD SPECIFICATION FOR ZINC (HOT DIP GALVANIZED) COATINGS ON IRON AND STEEL PRODUCTS.
- GALVANIZED COATINGS ON PRODUCTS FABRICATED FROM ROLLED, PRESSED AND FORGED STEEL SHAPES, PLATES, BARS AND STRIPS: GALVANIZED AFTER ALL WELDING AND GRINDING COMPLETE. NO WELDING OR GRINDING OF GALVANIZED PRODUCTS ALLOWED.
- ZINC RICH PRIMER: ZINC RICH, ORGANIC, READY MIX TO CAN/CSSB 1,181-92. LOW VOC TYPE. UNLESS OTHERWISE DETAILED, CONSTRUCT LADDERS AS FOLLOWS:
- WELDING SHALL BE PERFORMED BY TRADES PERSONS CERTIFIED BY THE CANADIAN WELDING BUREAU UNDER CSA STANDARD W47.1.
- ALL CONNECTIONS SHALL BE WELDED USING E480XX ELECTRODES OR BOLTED USING ASTM A325 HIGH STRENGTH BOLTS. USE ONLY BOLTED CONNECTIONS WHERE INDICATED ON THE DRAWINGS.
- STRINGERS SHALL BE MINIMUM 19 X 38 MM STEEL BAR EXTENDING MINIMUM 900 MILLIMETRES ABOVE THE LANDING/PARAPET.
- RUNGS SHALL BE 19 MM SOLID STEEL BARS, 400 MM LONG, SPACED AT 300 MM O.C. VERTICALLY AND WELDED TO STRINGERS.
- ATTACH STRINGERS TO WALLS WITH 10 MM X 38 MM STEEL BAR YOKES, U-SHAPED, SPACED AT MAXIMUM 1220 MM O.C. VERTICALLY. LOCATE CENTRE LINE OF RUNGS NOT LESS THAN 150 MM FROM FACE OF WALLS. THROUGH BOLT AT MASONRY WALLS IN ACCORDANCE WITH REQUIREMENTS OF MMAH SB-8
- PROVIDE SAFETY CAGES TO MINISTRY OF LABOUR STANDARD DETAILS WHERE INDICATED.
- WHERE INDICATED, PROVIDE HORIZONTAL AND VERTICAL RETURNS OR STRINGERS.
- FABRICATE LADDER PLATFORMS AS DETAILED WITH GALVANIZED STEEL GRATING.
- WHERE INDICATED PROVIDE LOCKABLE LADDER COVER WITH PIANO HINGES AND PADLOCK HASP. HARDWARE TO BE HOT DIP GALVANIZED.
- ALL EXTERIOR LADDERS SHALL BE GALVANIZED

METAL CLADDING

- FASTENERS: SELF TAPPING CADMIUM PLATED SHEET METAL SCREWS
- TRIM: SAME MATERIAL AND GAUGE AS PANEL MATERIAL
- SUBFRAMING: 0.048" THICK ZINC COATED STEEL
- INSULATION: FIBREGLAS AF110, THICKNESS TO MATCH EXISTING
- METAL SIDING: VOWEST CL622 - COLOUR AND PROFILE TO MATCH EXISTING. CUT, PATCH AND MAKE GOOD EXISTING METAL WALL ASSEMBLIES AS NECESSARY TO COMPLETE THE WORK INCLUDING ALL SIDING, TRIM, INSULATION GIRTS AND ACCESSORIES. NEW MATERIAL SHALL MATCH EXISTING.

MODIFIED BITUMINOUS SHEET AIR BARRIER

- SELF-ADHERED AIR/VAPOUR BARRIER TRANSITION MEMBRANE SHALL SRS MODIFIED BITUMEN, SELF-ADHERING SHEET MEMBRANE COMPLETE WITH A CROSS-LAMINATED POLYETHYLENE FILM, AND HAVING THE FOLLOWING PHYSICAL PROPERTIES:
 - THICKNESS: 1.0 MM (40 MILS) MIN.
 - AIR LEAKAGE: <0.01 L/S/M² @ 75 PA TO ASTM E283-91.
 - VAPOUR PERMEANCE: 1.6 NG/PALM²S (0.03 PERMS) TO ASTM E96.
 - LOW TEMPERATURE FLEXIBILITY: -30 DEGREES C TO CGSB 37-GP-56M.
 - ELONGATION: 200% TO ASTM D412-MODIFIED.
- ACCEPTABLE PRODUCTS:
 - BLUESKIN SA BY MONSEY-BAKOR INC.
 - PERM-A-BARRIER BY W.R. GRADE & CO.
 - AIR SHIELD BY W.R. MEADOWS
 - EXAIR 110 BY TREMCO
 - DELTA-LENT SA BY COSELLA-DOGREN
 - SOPRASAL STICK 1100T BY SOPREMA
- ADHESIVE AND PRIMERS
 - AS RECOMMENDED BY MANUFACTURER.

SEALANTS

- ALL SEALANT MATERIAL SHALL BE ASBESTOS FREE.
- SUBMIT WHIMS DATA SHEETS FOR REVIEW AND APPROVAL.
- SEAL ALL JOINTS BETWEEN DISMILAR MATERIALS AND SURFACES.
- SEALANT SHALL BE TREMCO MONO OR EQUIVALENT.
- BACKER ROD: SEALTIGHT ETHAFOAM BY WR MEADOWS OR EQUIVALENT. SIZED 30 - 50% LARGER THAN JOINT.
- PRIMERS AS RECOMMENDED BY SEALANT MANUFACTURER.
- CLEAN AND PRIME SUBSTRATES AND INSTALL BACKER ROD AND SEALANT IN ACCORDANCE WITH MANUFACTURER'S INSTRUCTIONS.
- SEALANTS SHALL COMPLY WITH THE FOLLOWING STANDARDS:
 - ASTM C834-14 STANDARD SPECIFICATION FOR LATEX SEALANTS
 - ASTM C920-14 STANDARD SPECIFICATION FOR ELASTOMERIC JOINT SEALANTS
 - ASTM C1184-14 STANDARD SPECIFICATION FOR STRUCTURAL SILICONE SEALANTS
 - ASTM C1193-13 STANDARD GUIDE FOR USE OF JOINT SEALANTS
 - ASTM C1311-14 STANDARD SPECIFICATION FOR SOLVENT RELEASE SEALANTS

HOLLOW METAL DOORS AND FRAMES

- DOORS: 18 GAUGE, WIPE COAT GALVANIZED STEEL.
- FRAMES: 16 GAUGE PRESSED STEEL, WIPE COAT GALVANIZED, FORMED TO PROFILES SHOWN
- FRAME ANCHORS: TO SUIT, MIN 18 GAUGE GALV STEEL C/W HARDWARE. PROVIDE SIX (6) JAMB ANCHORS AND TWO (2) BASE ANCHORS FOR EACH FRAME
- PRIMER: TO CGSB 1-GP-181
- WELDING: TO CSA W59
- BLANK, MORTICE, REINFORCE DRILL AND TAP DOORS AND FRAMES TO RECEIVE TEMPLATED HARDWARE AS REQUIRED
- EXTERIOR DOORS SHALL BE FITTED WITH STEEL TOP AND BOTTOM CAPS

STEEL GRATING

- STRUCTURAL STEEL GRATING MATERIAL SHALL MEET THE REQUIREMENTS OF ASTM A-1011.
- GRATING DESIGN BASED ON MINIMUM FIBRE STRESS OF 125 MPa.
- ALL GRATING SHALL BE SCREW FASTENED IN PLACE TO STRUCTURAL STEEL FRAMING BELOW WITH SADDLE CLIPS AND/OR ANCHOR CLIPS.
- ALL GRATING SHALL BE SERRATED.
- REFER TO PLAN DRAWINGS FOR GRATING SIZE.

PAINT

- ALL PAINTING SHALL BE IN ACCORDANCE WITH THE MASTER PAINTERS INSTITUTE (MPI) ARCHITECTURAL SPECIFICATION MANUAL.
- PAINT MATERIALS AND MANUFACTURERS LISTED IN LATEST EDITION OF MPI APPROVED PRODUCTS LIST (APL) ARE ACCEPTABLE FOR USE ON THIS PROJECT.
- PROVIDE PAINT PRODUCTS MEETING MPI "ENVIRONMENTALLY FRIENDLY" E2 OR E3 RATINGS BASED ON VOC (EPA METHOD 24) CONTENT LEVELS.
- STORE ALL PAINT MATERIALS IN ACCORDANCE WITH THE REQUIREMENTS OF THE MINISTRY OF LABOUR.
- CLEAN AND PREPARE ALL SURFACES PRIOR TO PAINTING IN ACCORDANCE WITH MPI AND PAINT MANUFACTURERS INSTRUCTIONS.
- TEST ALL SURFACES FOR MOISTURE. DO NOT PAINT WHEN MOISTURE CONTENT EXCEEDS 12%.
- PAINT ALL NEW MATERIALS AND SURFACES
- PAINT SCHEDULE: COLOUR WILL BE SELECTED BY THE CONSULTANT FROM FULL RANGE OF MANUFACTURERS COLOUR CHARTS
- STANDARD OF ACCEPTANCE:
 - FINAL COAT TO EXHIBIT UNIFORMITY OF COLOUR AND UNIFORMITY OF SHEEN ACROSS FULL SURFACE AREA.
- DELIVER TO EXTRA MATERIALS FROM SAME PRODUCTION RUN AS PRODUCTS INSTALLED. PACKAGE PRODUCTS WITH PROTECTIVE COVERING AND IDENTIFY WITH DESCRIPTIVE LABELS.
 - QUANTITY: PROVIDE ONE FOUR LITRE CAN OF EACH TYPE AND COLOUR OF PRIMER STAIN FINISH COATING. IDENTIFY COLOUR AND PAINT TYPE IN RELATION TO ESTABLISHED COLOUR SCHEDULE AND FINISH SYSTEM.
- EXTERIOR PAINTING SYSTEMS
 - STEEL DOORS, FRAMES AND METAL FABRICATIONS: EXT 5.1D - ALKYD G5 SEMI-GLOSS FINISH OVER ALKYD PRIMER.
 - METAL FABRICATIONS: INT 5.3A LATEX G5 SEMI-GLOSS FINISH
 - GALVANIZED METAL (INTERIOR DOORS, FRAMES, RAILINGS, MISC. STEEL, PIPES, AND DUCTS): INT 5.3A LATEX G5 SEMI-GLOSS FINISH
- ALL OTHER SURFACES NOT NOTED ABOVE: HIGH PERFORMANCE FINISH SUITABLE FOR COMMERCIAL AND INSTITUTIONAL ENVIRONMENT AND IN ACCORDANCE WITH MPI PAINTING MANUAL.

PREFABRICATED GUARD RAILS

- PROVIDE AND INSTALL FREE-STANDING, MODULAR 5003 ROOFBARRIER 503 GUARDRAIL SYSTEM, AS SUPPLIED BY SKYLINE GROUP, (877) 417-8336, INCLUDING TUBE RAILINGS, CURVED ARCHITECTURAL UPRIGHTS, WEIGHTED BASES, FITTINGS AND DELIVERY TO SITE.
- REFERENCE: OHSA ACT R.R.O. 1990, REGULATION 851 - INDUSTRIAL ESTABLISHMENTS, DIVISION B, SECTION 9.8.8, AND ALL APPLICABLE STATE, PROVINCIAL, LOCAL, AND REGIONAL CODES.
- RAILING SHALL CONSIST OF TOP RAILS, MID RAILS, CURVED ARCHITECTURAL UPRIGHTS, WEIGHTED BASES AND CONNECTIONS.
- ALL RAILING TUBING SHALL BE 1.66" 11 GAUGE G90 GALVANIZED STEEL TUBE MANUFACTURED AS PER A-787, C1010 MODIFIED GRADE, 50,000 YIELD, 55,000 TENSILE.
- RAILING ASSEMBLY SHALL BE CAPABLE OF RESISTING AN EVENLY DISTRIBUTED VERTICAL LOAD OF 1.5KN/M APPLIED AT THE TOP OF THE GUARD (AS PER OBC).
 - INDICATE PROFILES, SIZES, CONNECTIONS, SIZE, AND TYPE OF FASTENERS AND ACCESSORIES.
- COMPONENTS:
 - TUBE: A-787 1.66" 11 GAUGE G90 GALVANIZED STEEL TUBE.
 - RAILS AND POSTS: A-787 1.66" 11 GAUGE G90 GALVANIZED STEEL TUBE.
 - CLAMP FITTINGS: ELBOWS, CROSSOVERS, WALL FLANGES, TEES, COUPLINGS, FLUOROCARBON FINISH OR HOT DIPPED GALVANIZED.
 - WEIGHTED BASES: STEEL BASE PLATES ARE 5/8" THICK AND SUPPLIED WITH POWDER-COATED FINISH. CURVED ARCHITECTURAL UPRIGHT RECEIVERS AND A 3/4" THICK RUBBER PROTECTION MAT ON UNDERSIDE OF THE COMPONENT.
 - FASTENERS: ALL FASTENERS SHALL BE 304 OR 305 STAINLESS STEEL.
- FINISH:
 - TUBE FOR HANDRAILS, MID-RAILS, AND CURVED ARCHITECTURAL UPRIGHTS ARE TO BE GALVANIZED G90 FINISH TO THE REQUIREMENTS OF A-787.
 - FITTINGS SHALL BE HOT DIPPED GALVANIZED TO MEET A-787.
- VERIFY FIELD MEASUREMENTS PRIOR TO ASSEMBLY AND/OR ORDERING.
- FIT AND SHOP-ASSEMBLED COMPONENTS IN LARGEST PRACTICAL SIZES FOR DELIVERY TO SITE.
- CURVED ARCHITECTURAL UPRIGHT TOPS SHALL BE PLUGGED WITH WEATHER AND LIGHT RESISTANT MATERIAL WHERE REQUIRED.
- ASSEMBLE COMPONENTS WITH JOINTS TIGHTLY FITTED AND SECURED WITH SET SCREWS TIGHTENED TO 20 FT.LBS. OF TORQUE.
- ACCURATELY FORM COMPONENTS TO SUIT INSTALLATION.
- INSTALLATION:
 - FOR ALL CONNECTIONS WITH CLAMP FITTINGS, EACH SET SCREW IS TO BE TIGHTENED TO 20 FT.LBS. OF TORQUE.
 - PLACEMENT OF CURVED ARCHITECTURAL UPRIGHTS AND WEIGHTED BASE PLATES TO MEET MANUFACTURER SPECIFICATIONS AS STATED IN THE ROOFBARRIER INSTALLATION INSTRUCTIONS.
 - TERMINATE THE RUN AS STATED IN THE MANUFACTURER'S INSTRUCTION.

CHECK AND VERIFY ALL DIMENSIONS AT THE SITE.

ALL DRAWINGS, SPECIFICATIONS AND RELATED DOCUMENTS ARE THE COPYRIGHT PROPERTY OF THE CONSULTANT AND MUST BE RETURNED UPON REQUEST. REPRODUCTION OF DRAWINGS IN PART OR WHOLE WITHOUT THE PERMISSION OF THE CONSULTANT IS FORBIDDEN.
DRAWINGS ARE NOT TO BE USED FOR CONSTRUCTION UNTIL SIGNED AND SEALED BY THE CONSULTANT.

NO.	ISSUES	DATE	BY
1	ISSUED FOR TENDER AND PERMIT	SEPT. 26/18	BBA
2	ISSUED FOR TENDER	NOV. 14, 2019	BBA

NO.	REVISIONS	DATE	BY

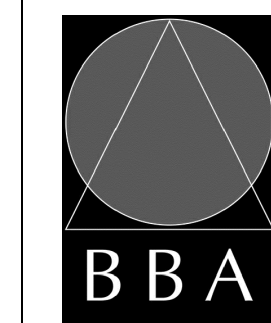
PROJECT:

**ROOF ACCESS LADDER
FIRE STATION # 2**
553 KINGSTON ROAD
PICKERING, ONTARIO

CITY OF PICKERING

DRAWING:

**GENERAL NOTES AND
SPECIFICATIONS**



**BARRY BRYAN
ASSOCIATES**

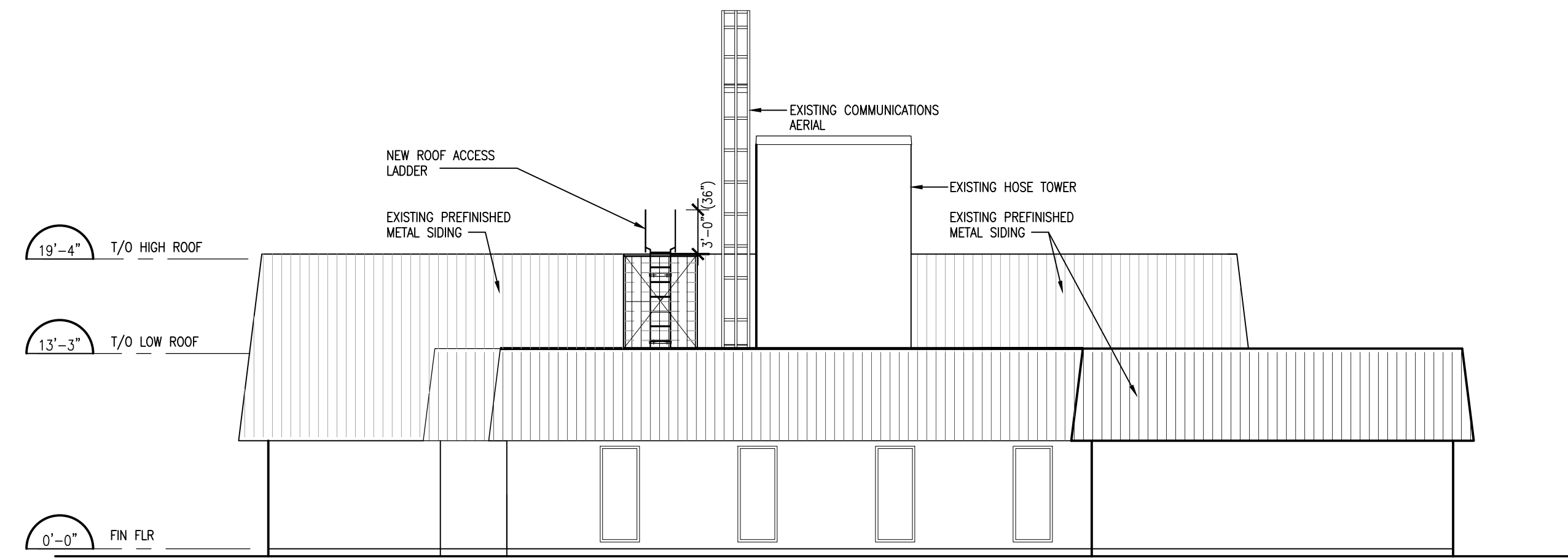
Architects
Engineers
Project Managers

250 Water Street
Suite 201
Whitby Ontario
L1N 0G5
Tel: (905) 666-5252
Fax: (905) 666-5256
e-mail: bba@bba-archeng.com

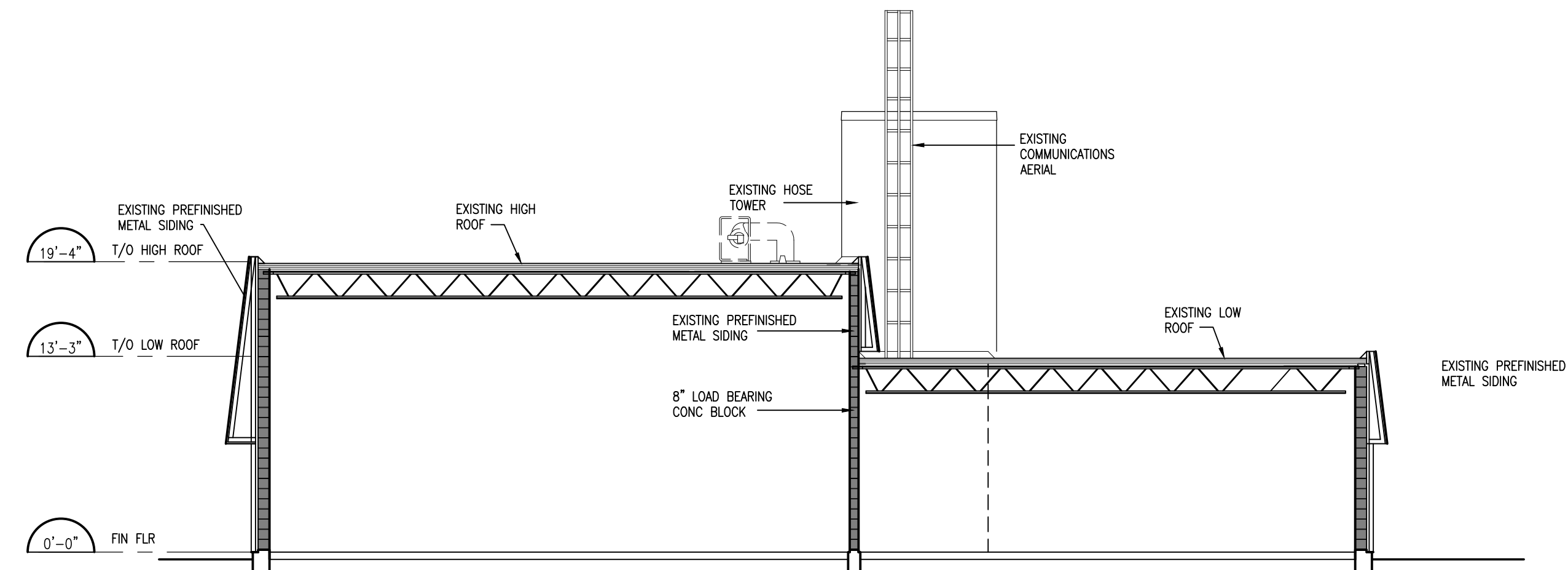
DESIGN BY: BBA	DOC CONTROL DATE:
DRAWN BY: CDS	% COMPLETE:
CHECKED BY:	INITIAL:

DATE: JUN 2017
SCALE: N/A
FILE:

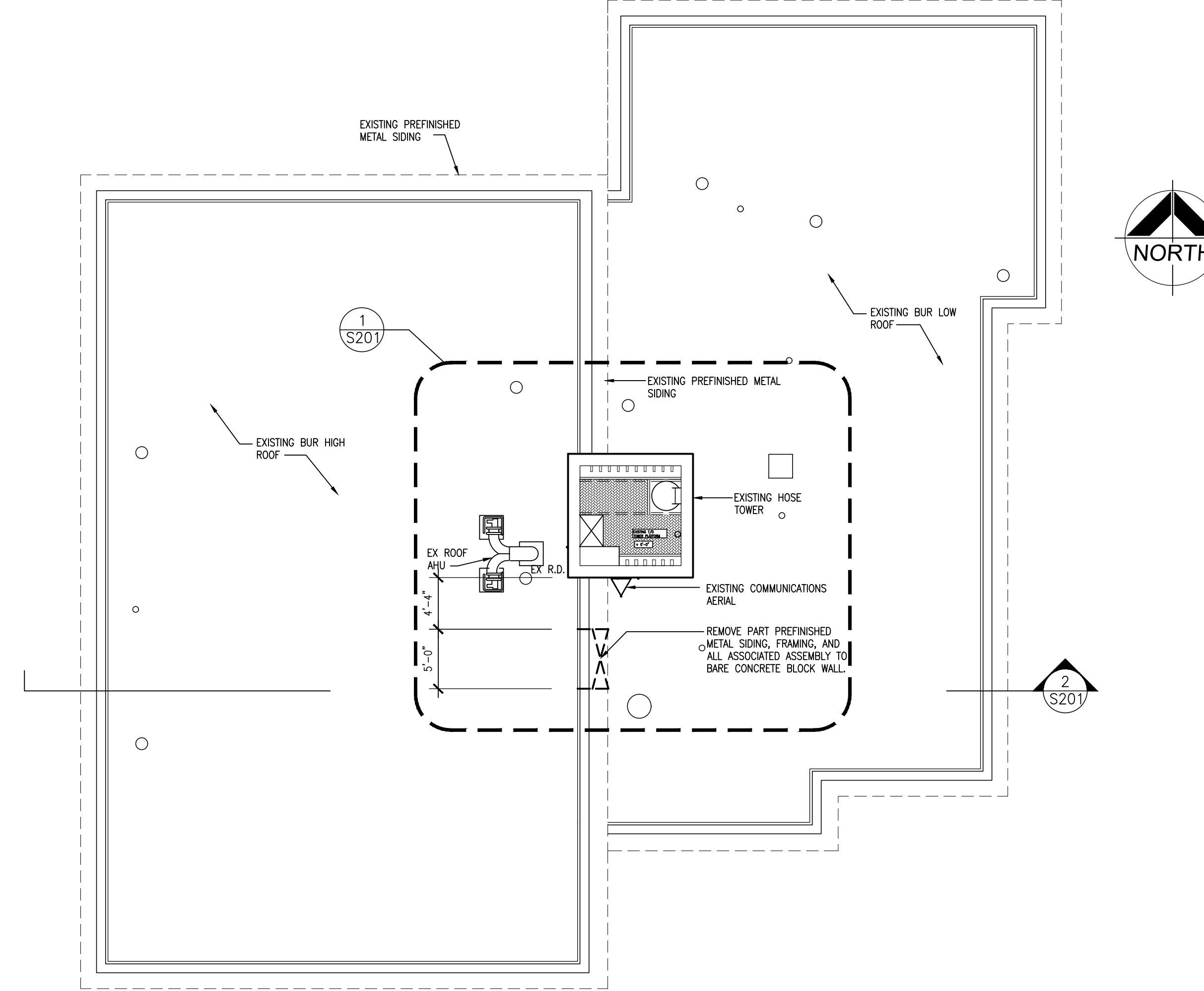
PROJECT NO: 17116	DRAWING NO: S001
-----------------------------	----------------------------



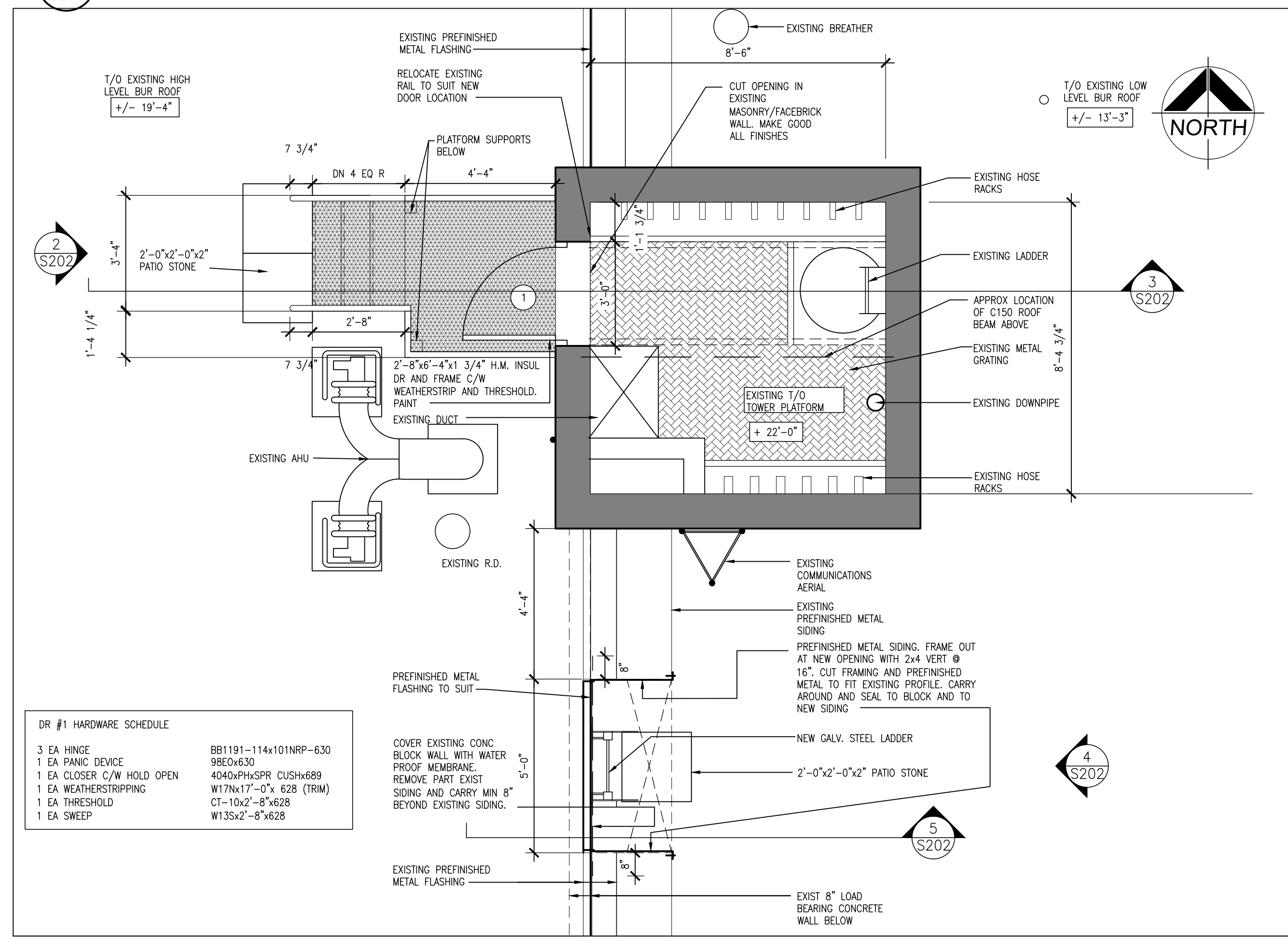
EAST ELEVATION FIRE STATION # 2
1/8"=1'-0"



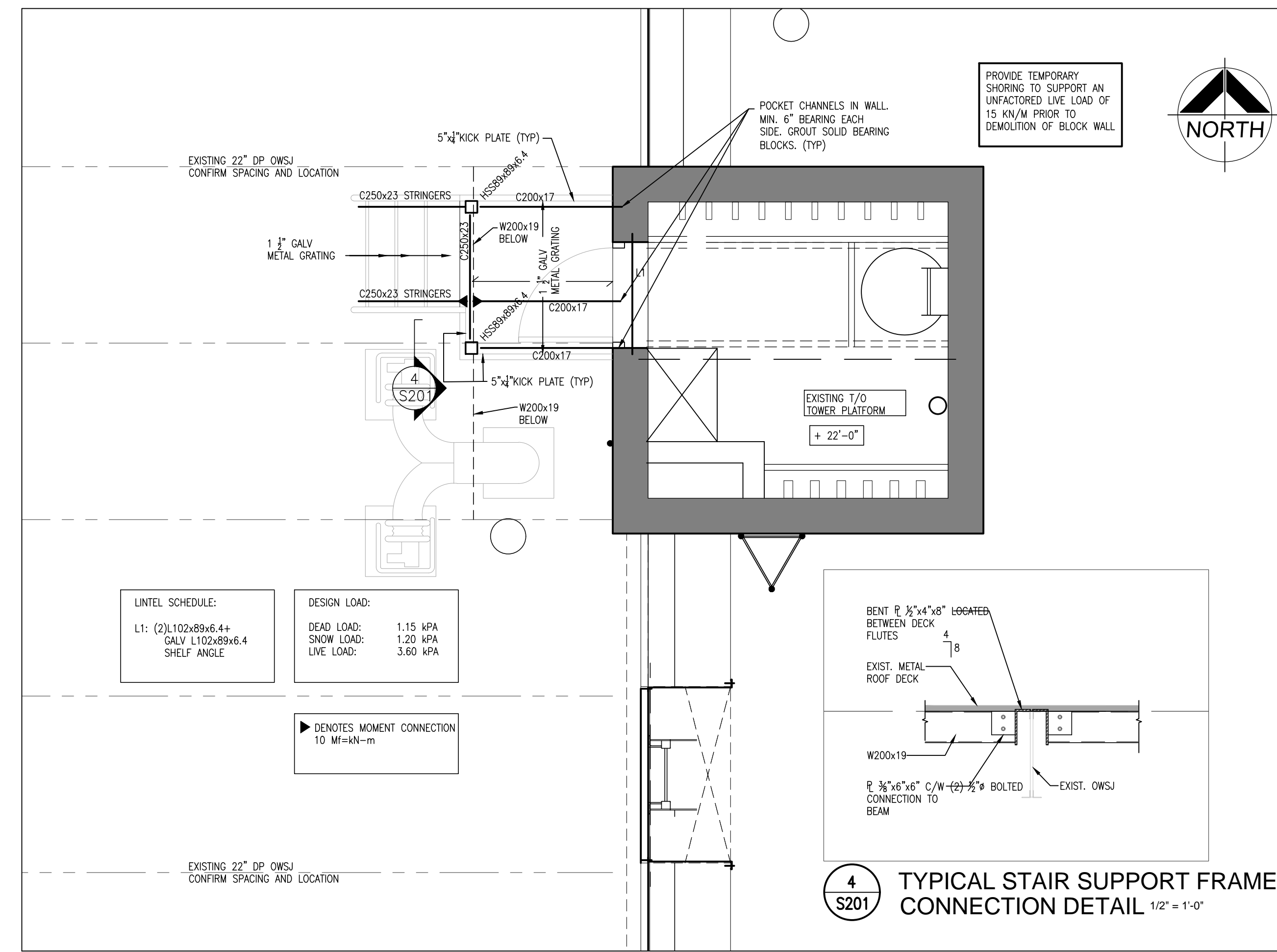
BUILDING SECTION FIRE STATION # 2
1/8"=1'-0"



ROOF PLAN/ PLATFORM PLAN FIRE STATION # 2
1/8"=1'-0"



PART ROOF PLAN AT PLATFORM LEVEL
3/8"=1'-0"



PART ROOF FRAMING PLAN AT PLATFORM LEVEL
3/8"=1'-0"

CHECK AND VERIFY ALL DIMENSIONS AT THE SITE.
ALL DRAWINGS, SPECIFICATIONS AND RELATED DOCUMENTS ARE THE COPYRIGHT PROPERTY OF THE CONSULTANT AND MUST BE RETURNED UPON REQUEST. REPRODUCTION OF DRAWINGS IN PART OR WHOLE WITHOUT THE PERMISSION OF THE CONSULTANT IS FORBIDDEN.
DRAWINGS ARE NOT TO BE USED FOR CONSTRUCTION UNTIL SIGNED AND SEALED BY THE CONSULTANT.

NO.	ISSUES	DATE	BY
1	ISSUED FOR TENDER AND PERMIT	SEPT. 26/18	BBA
2	ISSUED FOR TENDER	NOV. 14, 2019	BBA

NO.	REVISIONS	DATE	BY
-----	-----------	------	----

PROJECT:
ROOF ACCESS LADDER
FIRE STATION # 2
553 KINGSTON ROAD
PICKERING, ONTARIO

CITY OF PICKERING

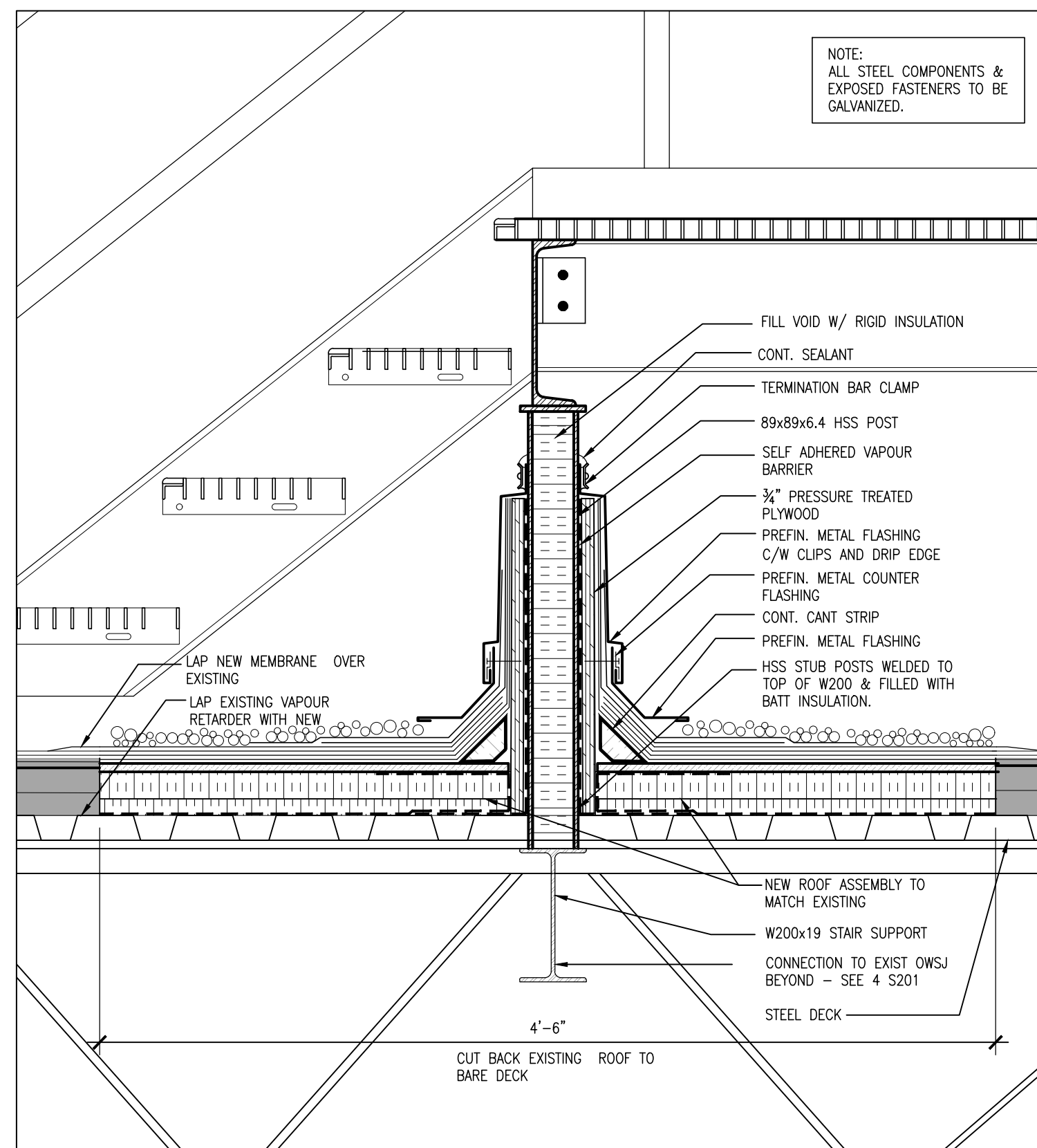
DRAWING:
PLANS, ELEVATION,
SECTION AND DETAIL

BBA
BARRY BRYAN ASSOCIATES
Architects
Engineers
Project Managers
250 Water Street
Suite 201
Whitby Ontario
L1N 0G5
Tel: (905) 666-5252
Fax: (905) 666-5256
e-mail: bba@bba-archeng.com

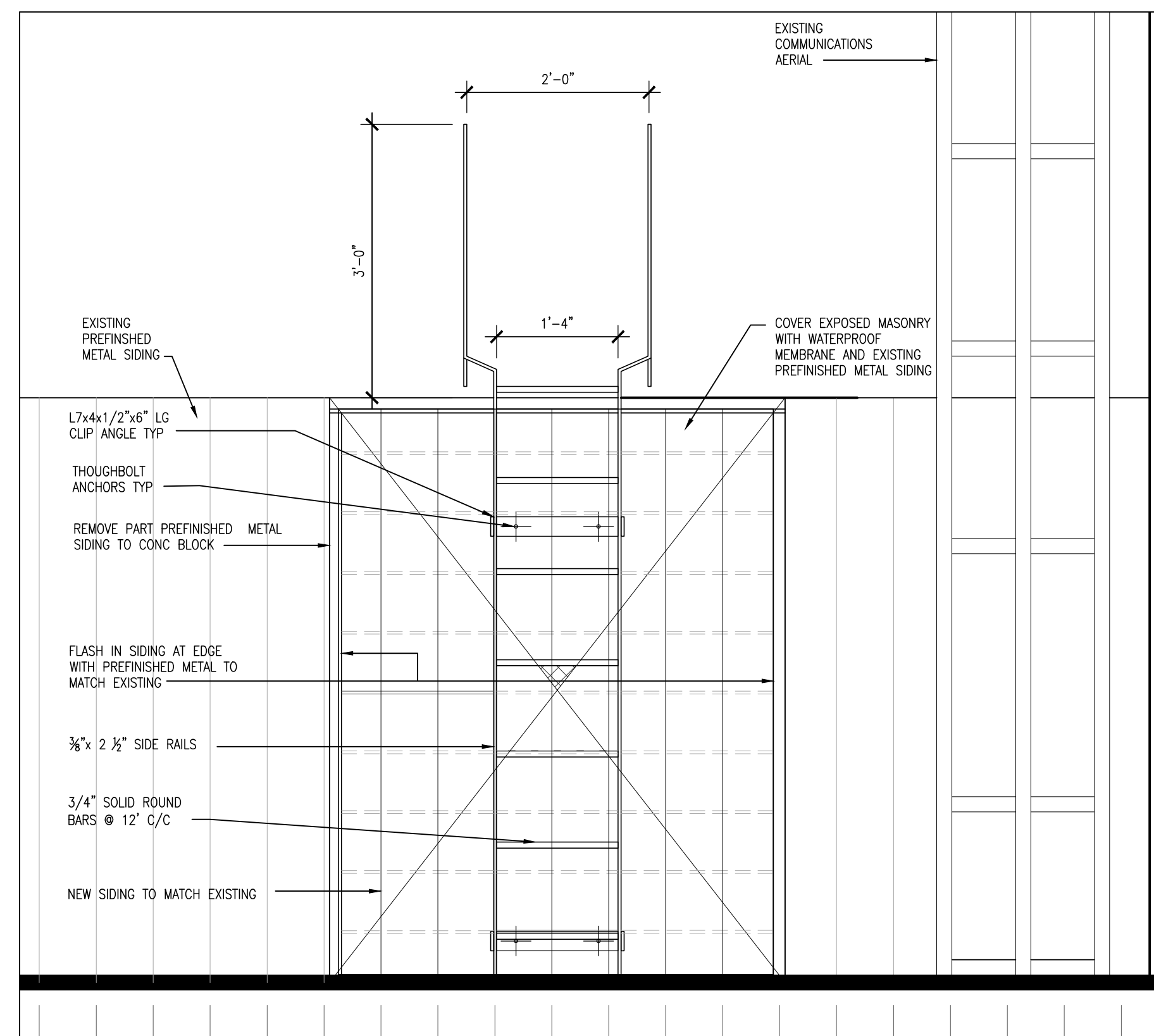
DESIGN BY: BBA
DRAWN BY: CDS
CHECKED BY: AS NOTED
DATE: JUN 2017
SCALE: AS NOTED
FILE:

DESIGN CONTROL: DATE: _____
% COMPLETE: _____
INITIAL: _____

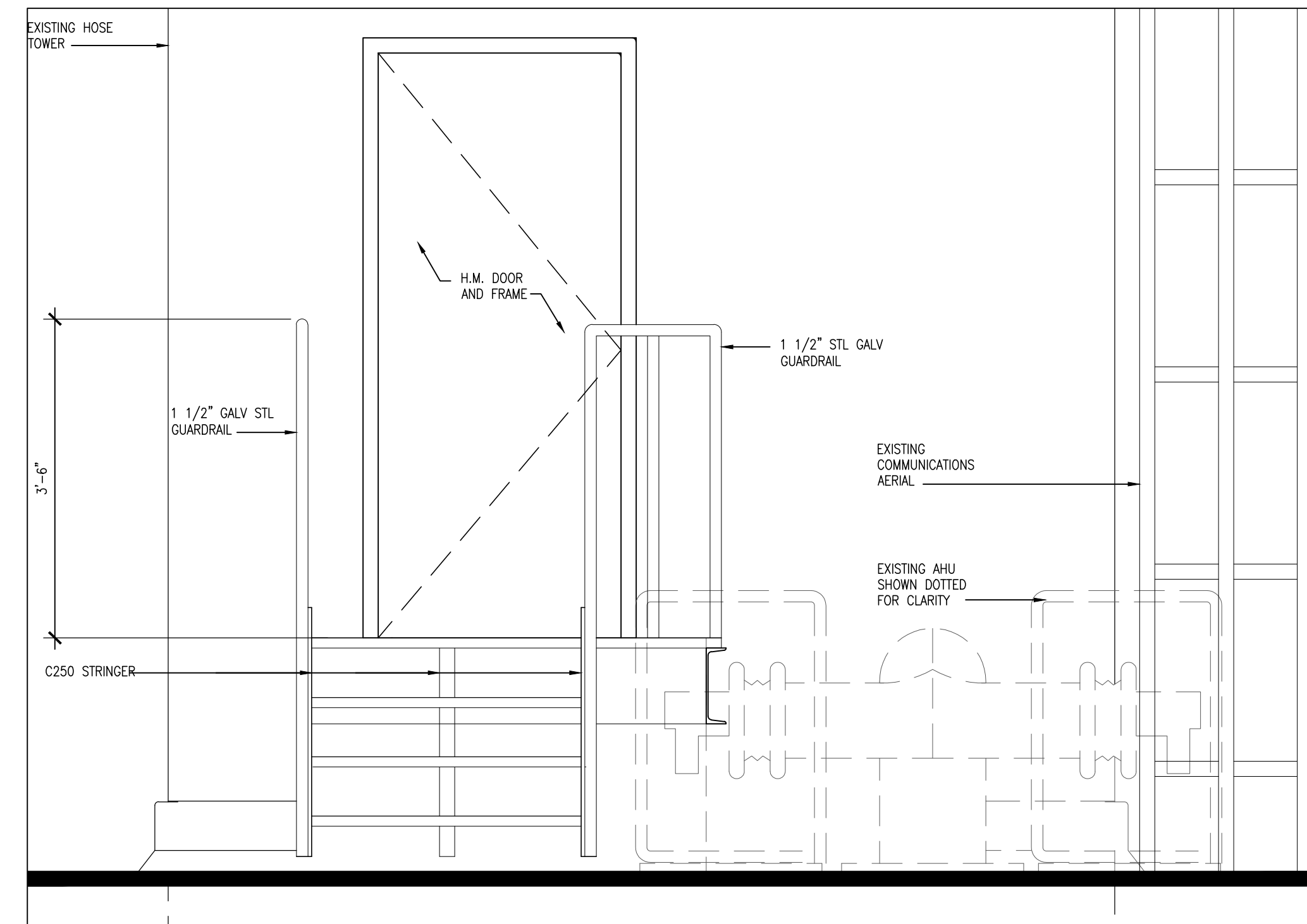
PROJECT NO: **17116**
DRAWING NO: **S201**



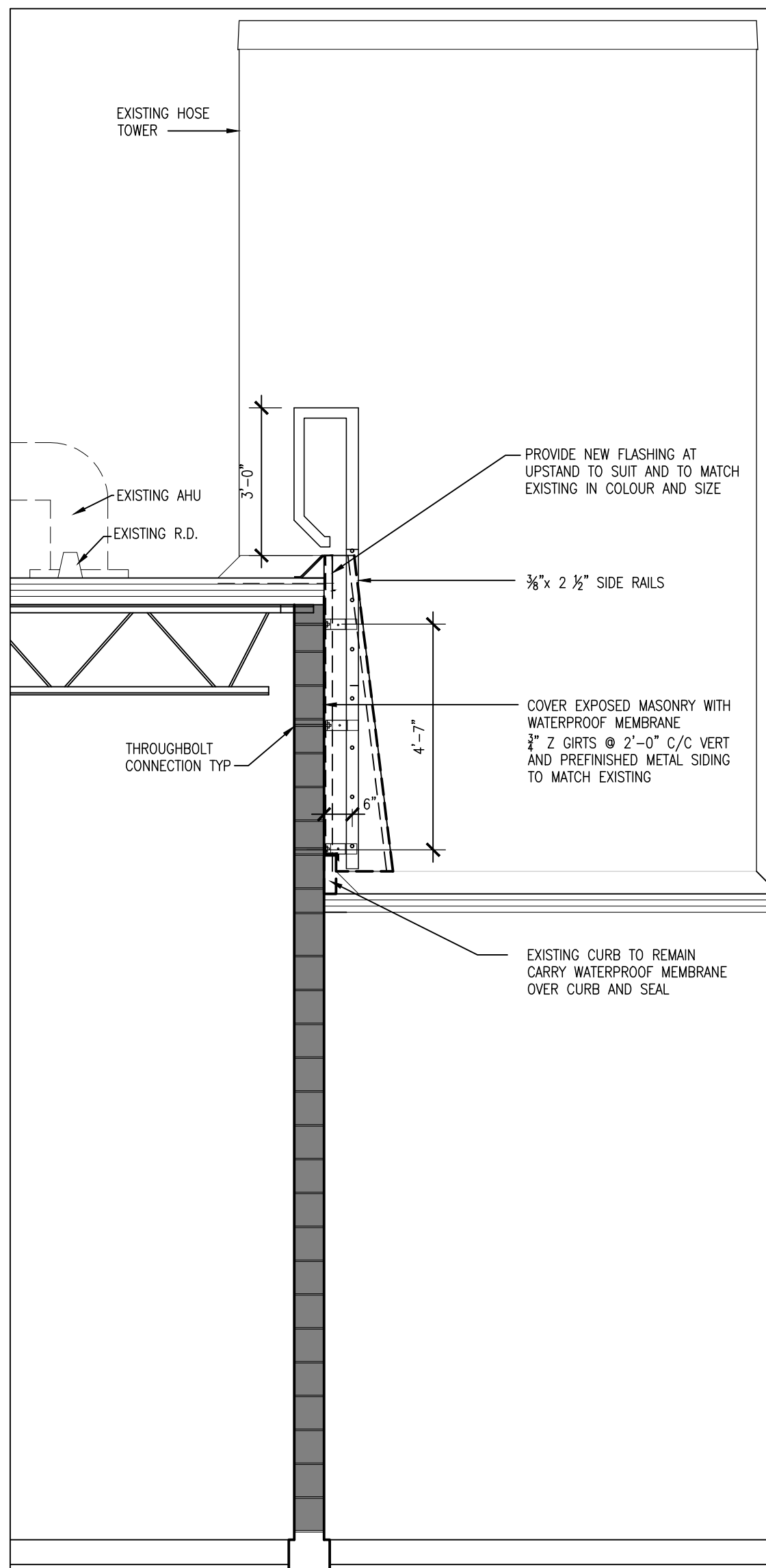
6
S202
STUB POST DETAIL
1 1/2" = 1'-0"



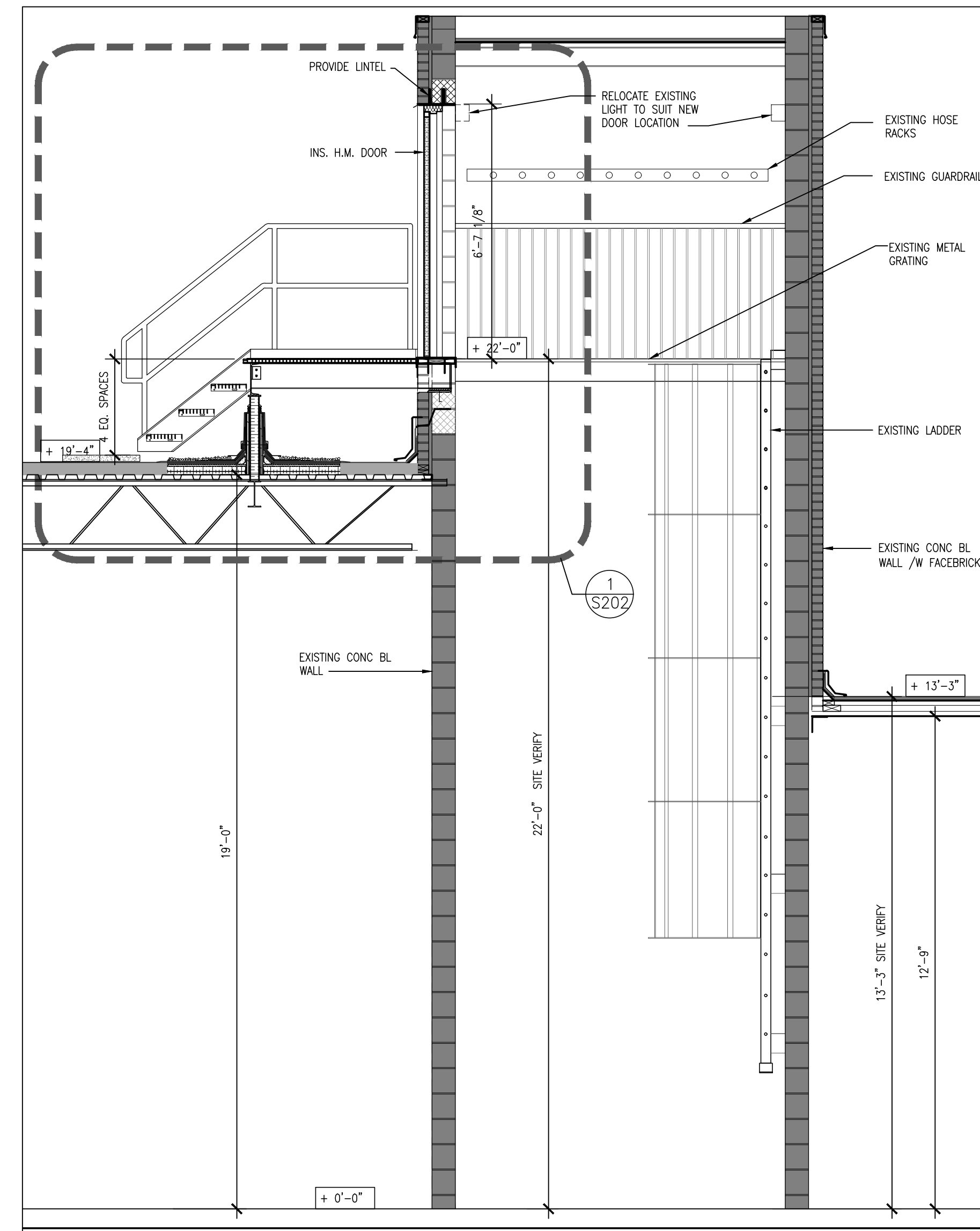
4
S202
ELEVATION
3/4" = 1'-0"



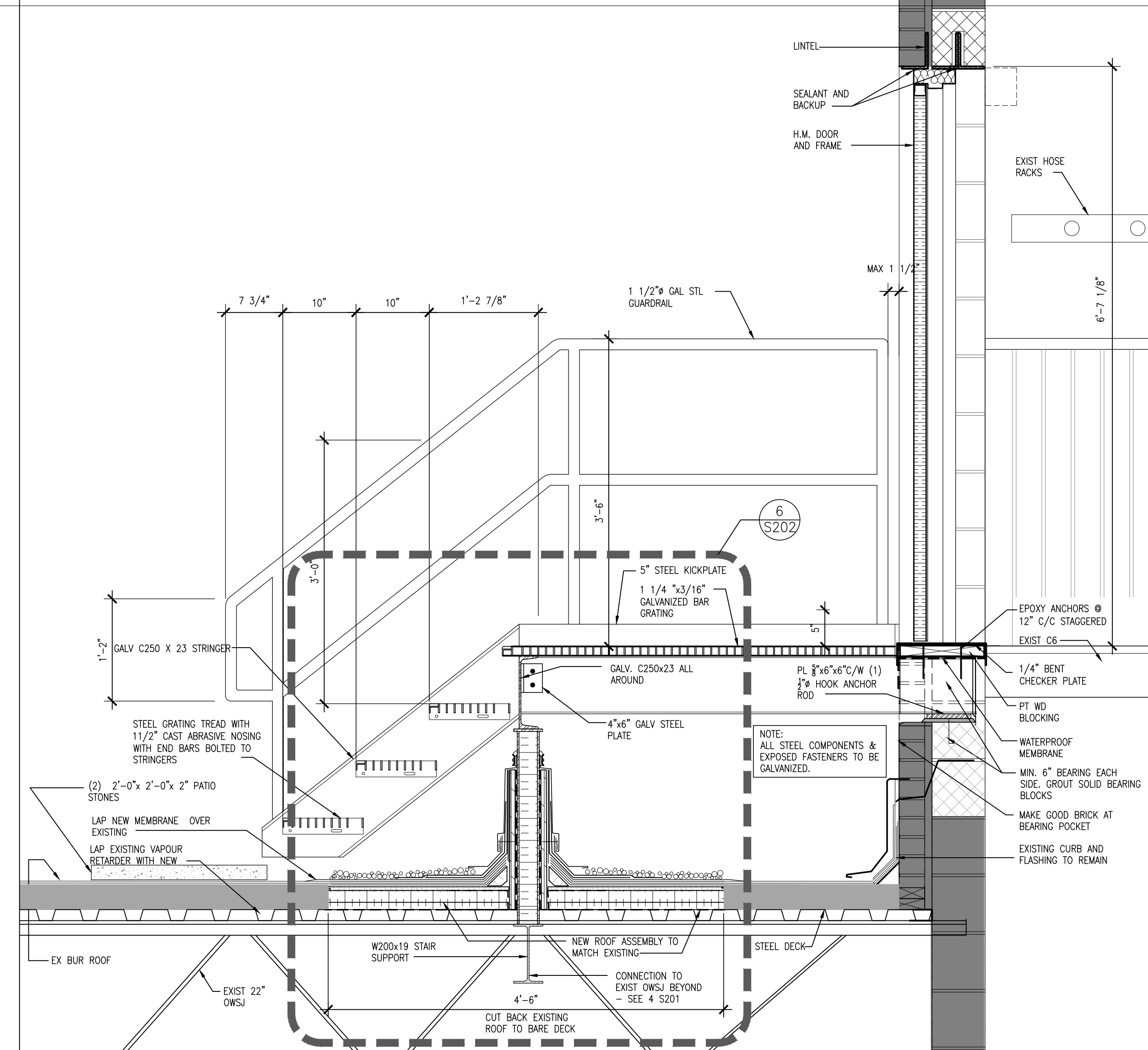
2
S202
ELEVATION
3/4" = 1'-0"



5
S202
SECTION
3/8" = 1'-0"



3
S202
SECTION
3/8" = 1'-0"



1
S202
DETAIL
1" = 1'-0"

CHECK AND VERIFY ALL DIMENSIONS AT THE SITE.
ALL DRAWINGS, SPECIFICATIONS AND RELATED DOCUMENTS ARE THE COPYRIGHT PROPERTY OF THE CONSULTANT AND MUST BE RETURNED UPON REQUEST. REPRODUCTION OF DRAWINGS IN PART OR WHOLE WITHOUT THE PERMISSION OF THE CONSULTANT IS FORBIDDEN.
DRAWINGS ARE NOT TO BE USED FOR CONSTRUCTION UNTIL SIGNED AND SEALED BY THE CONSULTANT.

NO.	ISSUES	DATE	BY
1	ISSUED FOR TENDER AND PERMIT	SEPT. 25/18	BBA
2	ISSUED FOR TENDER	NOV. 14, 2019	BBA

NO.	REVISIONS	DATE	BY

PROJECT:
**ROOF ACCESS LADDER
FIRE STATION # 2**
553 KINGSTON ROAD
PICKERING, ONTARIO

CITY OF PICKERING

DRAWING:
**ELEVATIONS, SECTIONS,
AND DETAILS**



BARRY BRYAN ASSOCIATES
Architects
Engineers
Project Managers

250 Water Street
Suite 201
Whitby Ontario
L1N 0G5
Tel: (905) 666-5252
Fax: (905) 666-5256
e-mail: bba@bba-archeng.com

DESIGN BY: BBA	DOC CONTROL: DATE:
DRAWN BY: CDS	% COMPLETE:
CHECKED BY:	NETAL:

DATE:
JUN 2017
SCALE:
AS NOTED
FILE:

PROJECT NO:
17116

DRAWING NO:
S202