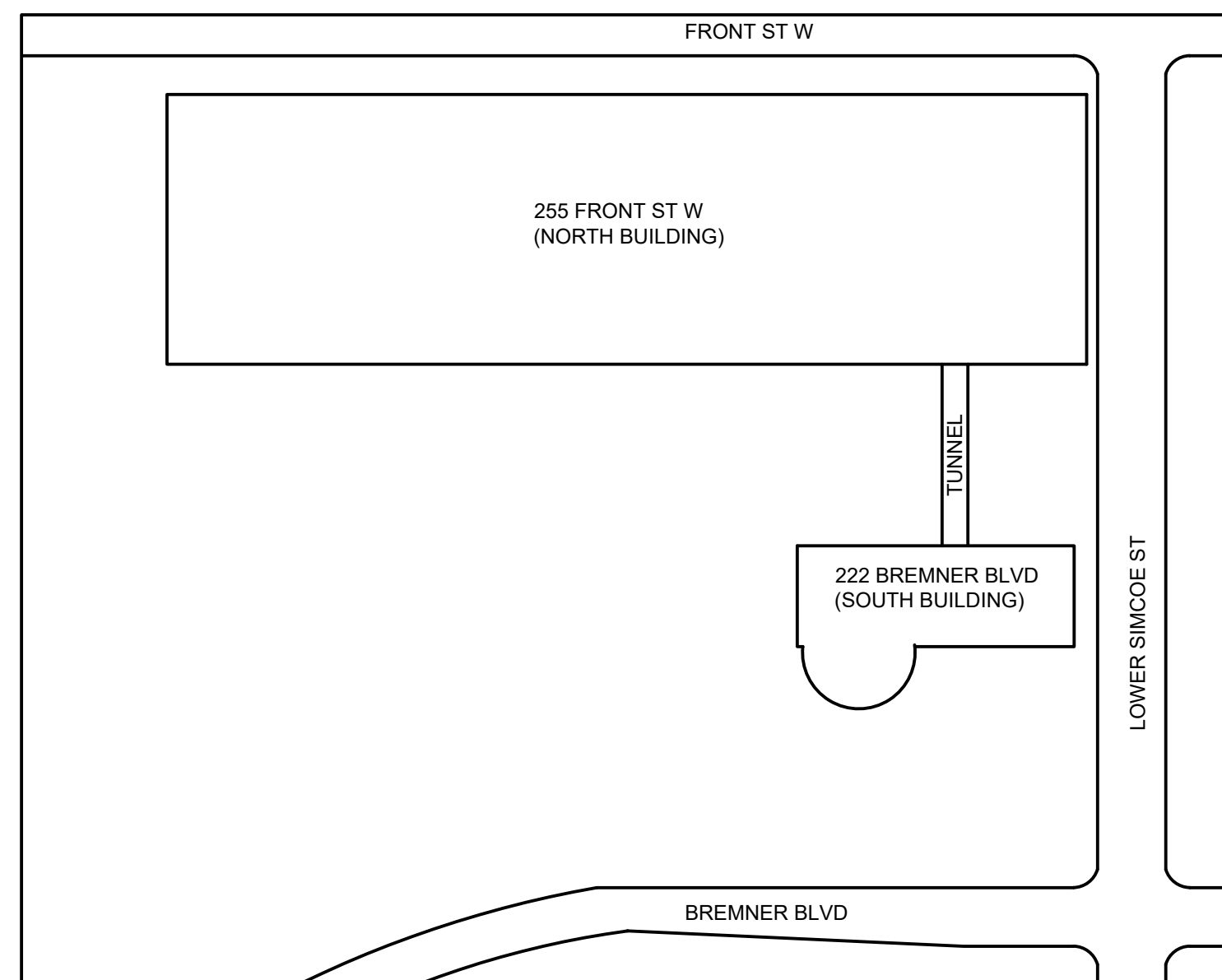


SITE PLAN



SCOPE OF WORK

- 222 BREMNER BLVD IS PROVIDED WITH AN EXISTING TWO STAGE FIRE ALARM CONTROL PANEL (SIEMENS MXL-V).
- A NEW TWO STAGE FIRE ALARM CONTROL PANEL (DESIGO CC) AND DATA GATHERING PANELS ARE TO BE INSTALLED AND WILL BE LOCATED IN THE SAME LOCATION AS THE EXISTING EQUIPMENT THAT IS TO BE REMOVED.
- ALL NEW DEVICES ARE TO BE COMPATIBLE AND OR LISTED FOR USE WITH THE EXISTING FIELD DEVICES.
- EXISTING SEQUENCE OF OPERATIONS TO BE MAINTAINED.

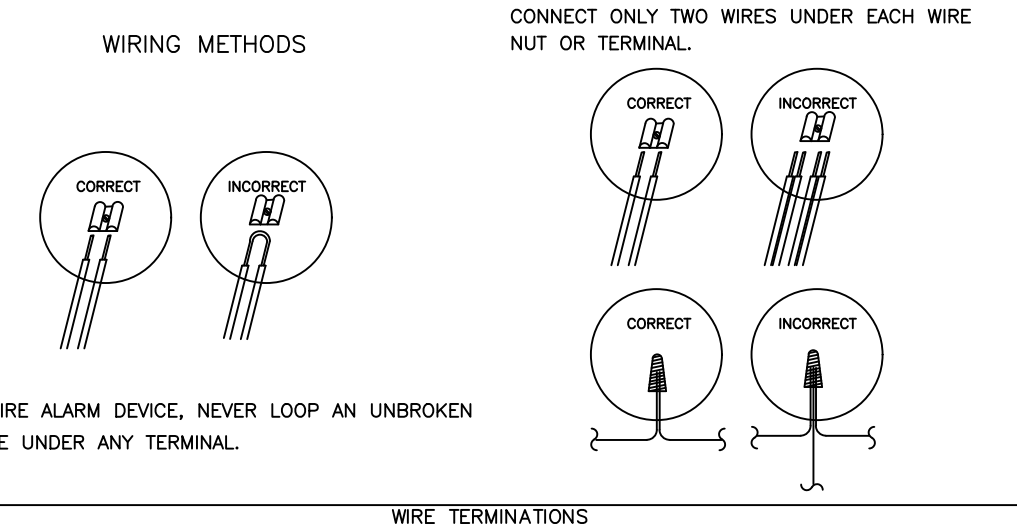
APPLICABLE CODES AND STANDARDS

- ONTARIO BUILDING CODE, 2012 EDITION
- ONTARIO FIRE CODE, 2015 EDITION
- CANULC-5524 "STANDARD FOR INSTALLATION OF FIRE ALARM SYSTEMS", 2014 EDITION
- CANULC-5537 "STANDARD FOR VERIFICATION OF FIRE ALARM SYSTEMS", 2013 EDITION
- ONTARIO ELECTRICAL SAFETY CODE, 2018 EDITION

NOTES

- THE FIRE ALARM CONTROL PANEL AND NEW WIRING DEVICES NOTED ON DRAWING SHALL BE INSTALLED TO CANULC 5524 "STANDARD FOR INSTALLATION OF FIRE ALARM SYSTEMS", 2014 EDITION.
- THE FIRE ALARM SYSTEM SHALL BE VERIFIED TO CANULC 5537 "STANDARD FOR VERIFICATION OF FIRE ALARM SYSTEMS", 2013 EDITION.

WIRING METHODS



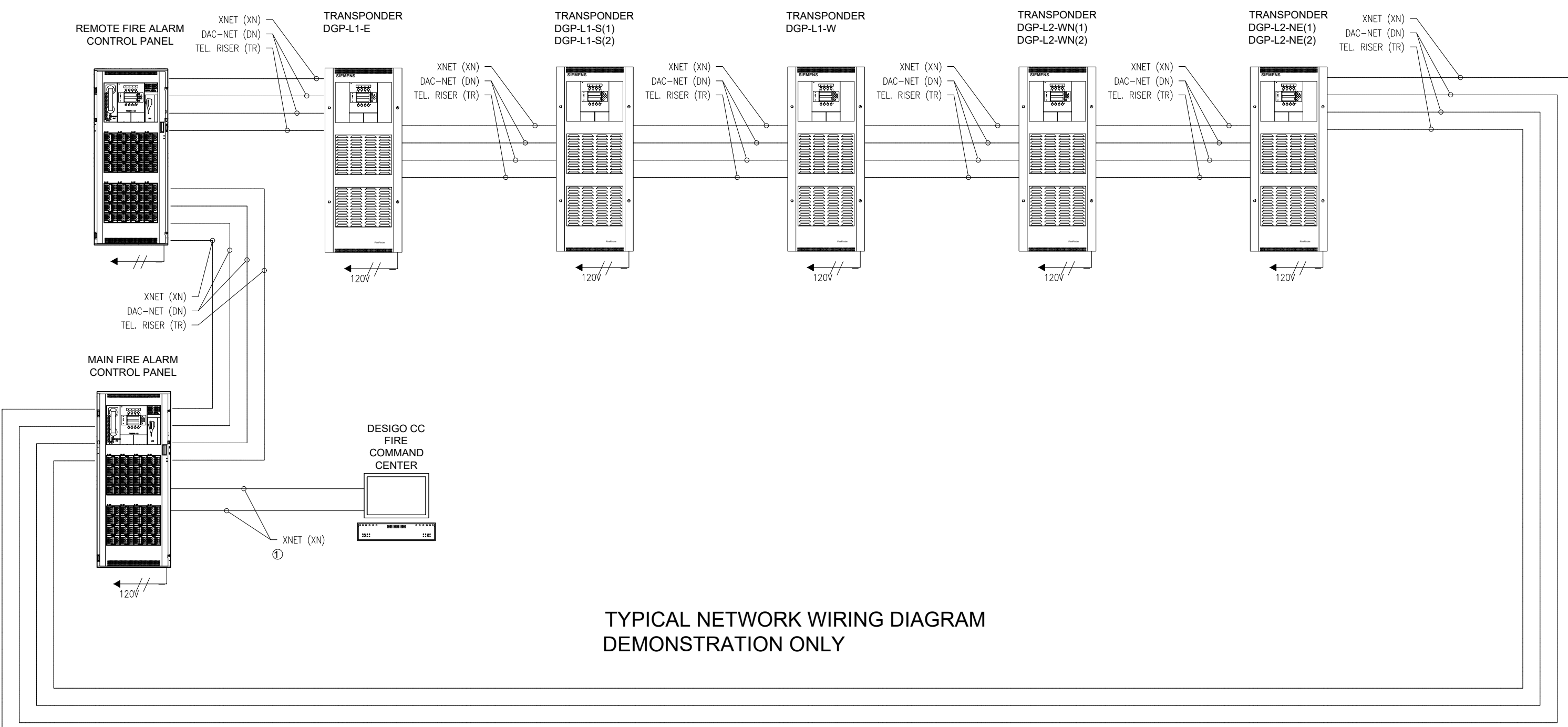
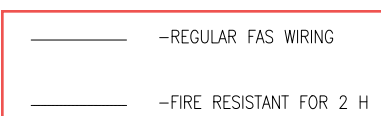
RISER DIAGRAM

CIRCUIT INFORMATION

ADDRESSABLE LOOP (SLC)	CLASS	X/B
NOTIFICATION CIRCUITS (NAC)	CLASS	B
FIREFIGHTER TELEPHONE CIRCUIT (NAC)	CLASS	B
COMMUNICATION/NETWORK PANEL (SLC)	CLASS	A
FIREFIGHTER TELEPHONE RISER	CLASS	B
SPEAKER CIRCUIT VOLTAGE:		70V

CABLE LEGEND

LTR	DESCRIPTION	AWG	# COND	SHIELD
A	(SLC) ADDRESSABLE LOOP	18	2	YES
S	(NAC) SPEAKER CIRCUIT	18	2	NO
T	(NAC) FIREFIGHTER TELEPHONE CIRCUIT	18	2	YES
V	(NAC) VISUAL SIGNALING CIRCUIT	14	2	NO
DN	(SLC) CIRCUIT COMMUNICATION DAC-NET	18	2x2	NO
XN	(SLC) CIRCUIT COMMUNICATION X-NET	18	2	NO
TR	FIREFIGHTER PHONE RISE	18	2	NO
**	120VAC POWER	12	2	NO



TYPICAL NETWORK WIRING DIAGRAM DEMONSTRATION ONLY

ZONE SCHEDULE

ALARM INITIATING ZONES

- 500 LEVEL COMMERCIAL AREA ALARM
- 500 LEVEL COMMERCIAL AREA FLOW
- 500 LEVEL PUBLIC ENTRY AREA ALARM
- 500 LEVEL PUBLIC ENTRY AREA FLOW
- 400 LEVEL COMMERCIAL ALARM
- 400 LEVEL COMMERCIAL FLOW
- PATH LEVEL ELEVATOR LOBBY ALARM
- PATH LEVEL ELEVATOR LOBBY FLOW
- BRIDGE LEVEL ELEVATOR LOBBY ALARM
- BRIDGE LEVEL ELEVATOR LOBBY FLOW
- 600 LEVEL NORTHEAST MECHANICAL ROOM ALARM
- 600 LEVEL NORTHEAST MECHANICAL ROOM FLOW
- 600 LEVEL REGISTRATION ALARM
- 600 LEVEL REGISTRATION FLOW
- 600 LEVEL ADMINISTRATION ALARM
- 600 LEVEL ADMINISTRATION FLOW
- 600 LEVEL TDHC WET AND DRY WELL ALARM
- 600 LEVEL TDHC WET AND DRY WELL FLOW
- 600 LEVEL ONE WAY RAMP ALARM
- 600 LEVEL ONE WAY RAMP FLOW
- 600 LEVEL PEDESTRIAN CORRIDOR ALARM
- 600 LEVEL PEDESTRIAN CORRIDOR FLOW
- 600 LEVEL EAST ENTRANCE ALARM
- 600 LEVEL EAST ENTRANCE FLOW
- 600 LEVEL EAST CENTRAL PARKING AREA ALARM
- 600 LEVEL EAST CENTRAL PARKING AREA FLOW
- 600 LEVEL WEST CENTRAL PARKING AREA ALARM
- 600 LEVEL WEST CENTRAL PARKING AREA FLOW
- 600 LEVEL WEST PARKING AREA ALARM
- 600 LEVEL WEST PARKING AREA FLOW
- 600 LEVEL STAIR 1
- 600 LEVEL STAIR 2
- 600 LEVEL STAIR 3
- 600 LEVEL STAIR 4
- 600 LEVEL STAIR 5
- 600 LEVEL STAIR 6
- 600 LEVEL STAIR 7
- 600 LEVEL STAIR 8
- 600 LEVEL STAIR 9
- 600 LEVEL STAIR 10
- 600 LEVEL STAIR 11
- 600 LEVEL STAIR 12
- 600 LEVEL STAIR 13
- 600 LEVEL STAIR 14A
- 600 LEVEL STAIR 15A
- 600 LEVEL STAIR 16A
- 600 LEVEL STAIR 17
- 600 LEVEL STAIR 18
- 600 LEVEL STAIR 19
- 600 LEVEL STAIR 20
- 600 LEVEL STAIR 21
- 600 LEVEL STAIR 22
- 600 LEVEL STAIR 23
- 600 LEVEL STAIR 24
- 700 LEVEL NORTHEAST MECHANICAL ROOM ALARM
- 700 LEVEL NORTHEAST MECHANICAL ROOM FLOW
- 700 LEVEL MEETING ROOMS ALARM
- 700 LEVEL MEETING ROOMS FLOW
- 700 LEVEL PREFUNCTION SPACE ALARM
- 700 LEVEL PREFUNCTION SPACE FLOW
- 700 LEVEL MEETING ROOMS 2 ALARM
- 700 LEVEL MEETING ROOMS 2 FLOW
- 700 LEVEL MECHANICAL ROOM ALARM
- 700 LEVEL MECHANICAL ROOM FLOW
- 700 LEVEL TDHC PLANT ALARM
- 700 LEVEL TDHC PLANT FLOW
- 700 LEVEL SOUTH MECHANICAL ROOM ALARM
- 700 LEVEL SOUTH MECHANICAL ROOM FLOW
- 700 LEVEL TRUCK DOCK SUPPLY PLENUM ALARM
- 700 LEVEL TRUCK DOCK SUPPLY PLENUM FLOW
- 800 LEVEL KITCHEN ALARM
- 800 LEVEL KITCHEN FLOW
- 800 LEVEL NORTH LOADING DOCK ALARM
- 800 LEVEL NORTH LOADING DOCK FLOW
- 800 LEVEL SERVICE TUNNEL ALARM
- 800 LEVEL SERVICE TUNNEL FLOW
- 800 LEVEL MEETING ROOMS ALARM
- 800 LEVEL MEETING ROOMS FLOW
- 800 LEVEL MULTI-PURPOSE BALLROOM ALARM
- 800 LEVEL MULTI-PURPOSE BALLROOM FLOW
- 800 LEVEL PREFUNCTION AND SWING SPACE ALARM
- 800 LEVEL PREFUNCTION AND SWING SPACE FLOW
- 800 LEVEL MECHANICAL ROOM ALARM
- 800 LEVEL MECHANICAL ROOM FLOW
- 800 LEVEL EAST EXHIBIT HALL E ALARM
- 800 LEVEL EAST EXHIBIT HALL E FLOW
- 800 LEVEL WEST EXHIBIT HALL E ALARM
- 800 LEVEL WEST EXHIBIT HALL E FLOW
- 800 LEVEL EAST EXHIBIT HALL D ALARM
- 800 LEVEL EAST EXHIBIT HALL D FLOW
- 800 LEVEL WEST EXHIBIT HALL D ALARM
- 800 LEVEL WEST EXHIBIT HALL D FLOW
- 800 LEVEL MAIN TRUCK DOCK ALARM
- 800 LEVEL MAIN TRUCK DOCK FLOW
- SOUTH MECH EL SBSTN PREACTION ALARM
- PATH WINDOW FLOW
- ELEV S9 SHAFT/PIT
- ELEV 11/12 MACH ROOM
- ELEV 11/12 SHAFT/PIT
- ELEV 11/12 MACH ROOM

SUPERVISORY ZONES

- GENERATOR LOW FUEL
- GENERATOR TROUBLE
- GENERATOR RUNNING
- GENERATOR H.O.A IN OFF
- LOW BATTERY VOLTAGE GENERATOR
- LEVEL 600 ELEVATOR #1 STATUS
- LEVEL 600 ELEVATOR #2 STATUS
- LEVEL 600 ELEVATOR #3 STATUS
- LEVEL 600 ELEVATOR #4 STATUS
- LEVEL 600 ELEVATOR #5 STATUS
- GROUND/LEVEL 400 ELEVATOR #6 STATUS
- GROUND/LEVEL 400 ELEVATOR #7 STATUS
- LEVEL 600 ELEVATOR #10 STATUS
- FIRST STAGE ALARM SIGNAL TO BCS/BAS
- KITCHEN GOOD SYSTEM STATUS
- LIGHTING DIMMER SYSTEM STATUS
- ACKNOWLEDGE FAN SHUTDOWN ON ALARM
- INCOMING FIRELINE-1 LEVEL 600 NORTH MECH RM
- INCOMING FIRELINE-2 WATER ENTRY RM SOUTH
- STANDPIPE VALVE-3 LEVEL 800 EXHIBIT HALL E-S/E
- STANDPIPE VALVE-4 LEVEL 800 EXHIBIT HALL E-S/E
- STANDPIPE VALVE-5 LEVEL 800 EXHIBIT HALL E-S/E
- STANDPIPE VALVE-6 LEVEL 800 EXHIBIT HALL E-S/E
- STANDPIPE VALVE-7 LEVEL 800 EXHIBIT HALL E-S/E
- STANDPIPE VALVE-8 LEVEL 800 EXHIBIT HALL E-S/E
- STANDPIPE VALVE-9 LEVEL 800 EXHIBIT HALL E-S/E
- STANDPIPE VALVE-10 LEVEL 800 EXHIBIT HALL D-S/W
- STANDPIPE VALVE-11 LEVEL 800 EXHIBIT HALL D-S/W
- STANDPIPE VALVE-12 LEVEL 800 EXHIBIT HALL D-N/W
- STANDPIPE VALVE-13 LEVEL 800 EXHIBIT HALL D-N/W
- STANDPIPE VALVE-14 LEVEL 800 EXHIBIT HALL D-N/W
- STANDPIPE VALVE-15 LEVEL 800 EXHIBIT HALL D-N/W
- STANDPIPE VALVE-16 LEVEL 800 EXHIBIT HALL D-N/W
- STANDPIPE VALVE-17 LEVEL 800 EXHIBIT HALL D-N/W
- STANDPIPE VALVE-19 LEVEL 800 EXHIBIT HALL D-N/W
- STANDPIPE VALVE-21 LEVEL 800 EXHIBIT HALL D-N/E
- STANDPIPE VALVE-22 LEVEL 800 EXHIBIT HALL D-N/E
- STANDPIPE VALVE-23 LEVEL 700 PREFUNCTION AREA
- STANDPIPE VALVE-24 LEVEL 700 PREFUNCTION AREA
- STANDPIPE VALVE-25 LEVEL 700 PREFUNCTION AREA
- STANDPIPE VALVE-26 LEVEL 700 PREFUNCTION AREA
- STANDPIPE VALVE-27 LEVEL 600 REGISTRATION AREA
- STANDPIPE VALVE-28 LEVEL 600 BALLROOM AREA
- STANDPIPE VALVE-29 LEVEL 600 NORTH MECH RM
- STANDPIPE VALVE-30 LEVEL 600 NORTH MECH RM
- STANDPIPE VALVE-31 LEVEL 600 NORTH MECH RM
- SPRINKLER VALVE-32 LEVEL 600 NORTH VALVE HEADER
- SPRINKLER VALVE-33 LEVEL 600 NORTH EDGE CTRL VALVE
- SPRINKLER VALVE-34 GROUND N EDGE ENTRANCE
- SPRINKLER VALVE-35 GROUND N EDGE COMMERCIAL
- SPRINKLER VALVE-36 MEZZ LVL N EDGE COMMERCIAL
- SPRINKLER VALVE-37 LEVEL 500 N EDGE SKYWALK
- SPRINKLER VALVE-38 LEVEL 400 N EDGE
- SPRINKLER VALVE-39 LEVEL 800 KITCHEN CTRL VALVE
- SPRINKLER VALVE-40 LEVEL 800 KITCHEN
- SPRINKLER VALVE-41 LEVEL 800 SERVICE TUNNEL
- SPRINKLER VALVE-42 LEVEL 600 MECH RM CTRL
- SPRINKLER VALVE-43 LEVEL 600 MECH RM
- SPRINKLER VALVE-44 LEVEL 700 MECH RM
- SPRINKLER HEADER-45 LEVEL 800 KITCHEN DOCK
- SPRINKLER HEADER-46 LEVEL 600 PREFUNCTION CTRL
- SPRINKLER VALVE-47 LEVEL 600 REGISTRATION
- SPRINKLER VALVE-48 LEVEL 700 PREFUNCTION
- SPRINKLER VALVE-49 LEVEL 800 PREFUNCTION
- SPRINKLER VALVE-50 LEVEL 800 BALLROOM
- FIRELINE-51 LEVEL 700 WEST VALVE HEADER
- SPRINKLER VALVE-52 LEVEL 700 MEETING RMS CTRL
- SPRINKLER VALVE-53 LEVEL 700 MECH RM
- SPRINKLER VALVE-54 LEVEL 700 WEST MEETING RM
- SPRINKLER VALVE-55 LEVEL 800 MECH RM
- SPRINKLER HEADER-56 LEVEL 700 PREFUNCTION CTRL
- SPRINKLER VALVE-57 LEVEL 700 ADMINISTRATION
- SPRINKLER VALVE-58 LEVEL 700 PREFUNCTION RM
- SPRINKLER VALVE-59 LEVEL 800 PREFUNC AND SWING
- SPRINKLER VALVE-60 LEVEL 800 EXHIBIT HALL D
- SPRINKLER VALVE-61 LEVEL 800 EXHIBIT HALL D
- FIRELINE-62 LEVEL 700 SOUTH VALVE HEADER
- SPRINKLER VALVE-63 LEVEL 700 CORR EXIT LAKESHORE
- SPRINKLER HEADER-64 LEVEL 700 MECH RM CTRL
- SPRINKLER VALVE-65 LEVEL 700 MECHANICAL ROOM
- SPRINKLER VALVE-66 LEVEL 700 TDHC MECH RM
- SPRINKLER VALVE-67 LEVEL 800 EXHIBIT HALL E
- SPRINKLER VALVE-68 LEVEL 800 EXHIBIT HALL E
- SPRINKLER VALVE-70 LEVEL 800 SOUTH LOAD DOCK DRY SYS
- SPRINKLER VALVE-71 LEVEL 600 PARKING WEST DRY SYS
- SPRINKLER VALVE-72 LEVEL 600 PARKING WEST DRY SYS
- SPRINKLER VALVE-73 LEVEL 600 PARKING EAST DRY SYS
- SPRINKLER VALVE-74 LEVEL 600 PARKING EAST DRY SYS
- SPRINKLER VALVE-75 LEVEL 600 S WATER METER RM
- SPRINKLER VALVE-76 LEVEL 600 TRUCK ELEV DRY SYS
- SPRINKLER VALVE-77 LEVEL 800 KITCHEN VALVE
- SPRINKLER VALVE-78 LEVEL 800-700 TDHC WELLS DRY SYS
- SPRINKLER VALVE-79 LEVEL 700 TRUCK DOCK SUPPLY PLENUM DRY
- SOUTH MECH EL SBSTN PREACTION ALM
- SOUTH MECH EL SBSTN PREACTION TBL
- SOUTH MECH EL SBSTN PREACTION SUPV
- SV-101 LEVEL 800 EXH HALL D N/W
- SV-102 LEVEL 700 COFFEE RM
- PATH WINDOW SV
- RED ALARM 00 YL ALARM 01 GRN NO BYPASS
- C/O FOR MTCC ACTV
- C/O FOR ENWAVE ACTV

PAGING ZONES

- ALL CALL PAGING
- ALL EVAC SIGNAL
- ALL ALERT SIGNAL
- ALL OTHER FOR DVU
- BRIDGE LEVEL SPEAKER
- PATH LEVEL
- 400 LEVEL
- 500 LEVEL
- 600 LEVEL
- 700 LEVEL
- 800 LEVEL
- PARKING LEVEL
- STAIR 1
- STAIR 2
- STAIR 3
- STAIR 4
- STAIR 5
- STAIR 6
- STAIR 7
- STAIR 8
- STAIR 9
- STAIR 10
- STAIR 11
- STAIR 12
- STAIR 13
- STAIR 14
- STAIR 15
- STAIR 16
- STAIR 17
- STAIR 18
- STAIR 19
- STAIR 20
- STAIR 21
- STAIR 22
- STAIR 23
- STAIR 24

FIREFIGHTER HANDSET ZONES

- LEVEL 800 KITCHEN
- LEVEL 800 LOADING DOCK
- LEVEL 800 PREFUNCTION SPACE SOUTH SWING SPACE MEETING
- LEVEL 800 PREFUNCTION SPACE SOUTH SWING SPACE MEETING
- LEVEL 800 PREFUNCTION SPACE EAST
- LEVEL 800 MEETING ROOMS
- LEVEL 800 MECH AND HIGH VOLTAGE
- LEVEL 800 BALLROOM NORTH
- WEST BALLROOM
- EAST BALLROOM
- WEST EXHIBIT HALL D
- SOUTH EAST EXHIBIT HALL D
- NORTH EAST EXHIBIT HALL D
- NORTH WEST EXHIBIT HALL E
- SOUTH WEST EXHIBIT HALL E
- NORTH EAST EXHIBIT HALL E
- SOUTH EAST EXHIBIT HALL E
- LEVEL 700 MEETING ROOMS WEST
- LEVEL 700 PREFUNCTION SPACE SOUTH MEETING ROOMS
- LEVEL 700 PREFUNCTION SPACE SOUTH MEETING ROOMS
- LEVEL 700 PREFUNCTION SPACE
- LEVEL 700 MEETING ROOMS NORTH
- LEVEL 700 MECHANICAL ROOM EAST
- LEVEL 700 STAIR 21
- LEVEL 700 MECHANICAL ROOM SOUTH
- TDHC
- LEVEL 600 ADMIN AREA/MEETING ROOM
- LEVEL 600 STAIR 12 MECHANICAL ROOM
- LEVEL 600 REGISTRATION AREA MAIN ELECTRICAL RM
- PARKING LEVEL WEST
- PARKING LEVEL CENTRE
- PARKING LEVEL STAIR 9
- PARKING LEVEL NORTH EAST
- PARKING LEVEL STAIR 22
- PARKING LEVEL STAIR 21
- PARKING LEVEL SOUTH EST EXIT
- TUNNEL
- LEVEL 800 SOUTH RECEIVING
- EXHIBIT HALL D STAIR 23
- PARKING LEVEL SOUTH EAST CORRIDOR
- PARKING LEVEL TOP OF RAMP
- 500 LEVEL
- 400 LEVEL
- PATH LEVEL
- BRIDGE LEVEL
- BRIDGE

SUBMITTALS

NO	DATE	DESCRIPTION	DWN	CHD
1	MAR 28/2024	ISSUED FOR CLIENT REVIEW	JR	MBN
2	APR 02/2024	ISSUED FOR CLIENT REVIEW	JR	MBN

DEVICE LEGEND

[FACP]	FIRE ALARM CONTROL PANEL
[DGP]	DATA GATHERING PANEL
[R]	REPLACE (DEVICE TO BE REPLACED)

NORRIS FIRE CONSULTING
 Norris Fire Consulting Inc
 1840 Clements Road, Suite 202, Pickering, ON L4W 3Y2
 Tel: (905) 659-9564, www.norrisfireconsulting.com
 Learn + Grow + Inspire + Execute



Professional Engineers
 Ontario
Limited Engineering Licensee
 Name: M. B. J. Norris
 Number: 100228927
 Limitations: Signaling and monitoring of fire protection and fire alarm systems as per OBC, OAC and MFPA (13, 14, 17A, 20, 22, 24, 30, 70, 101, 2001 & 2002)
 Association of Professional Engineers of Ontario
 APR. 02/24

FIRE ALARM PANEL REPLACEMENT

TORONTO METRO CONVENTION CENTRE
 222 BREMNER BLVD, TORONTO, ON

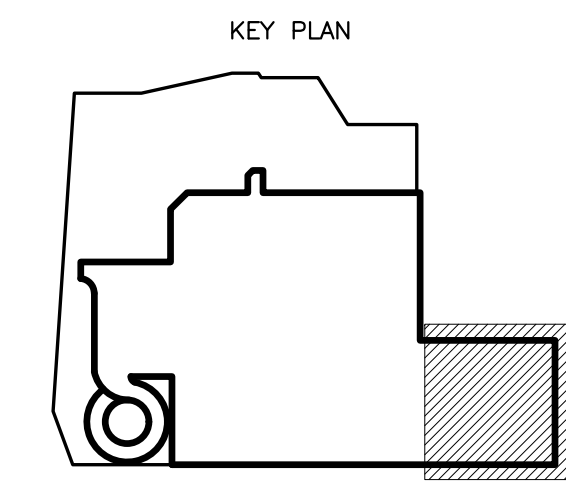
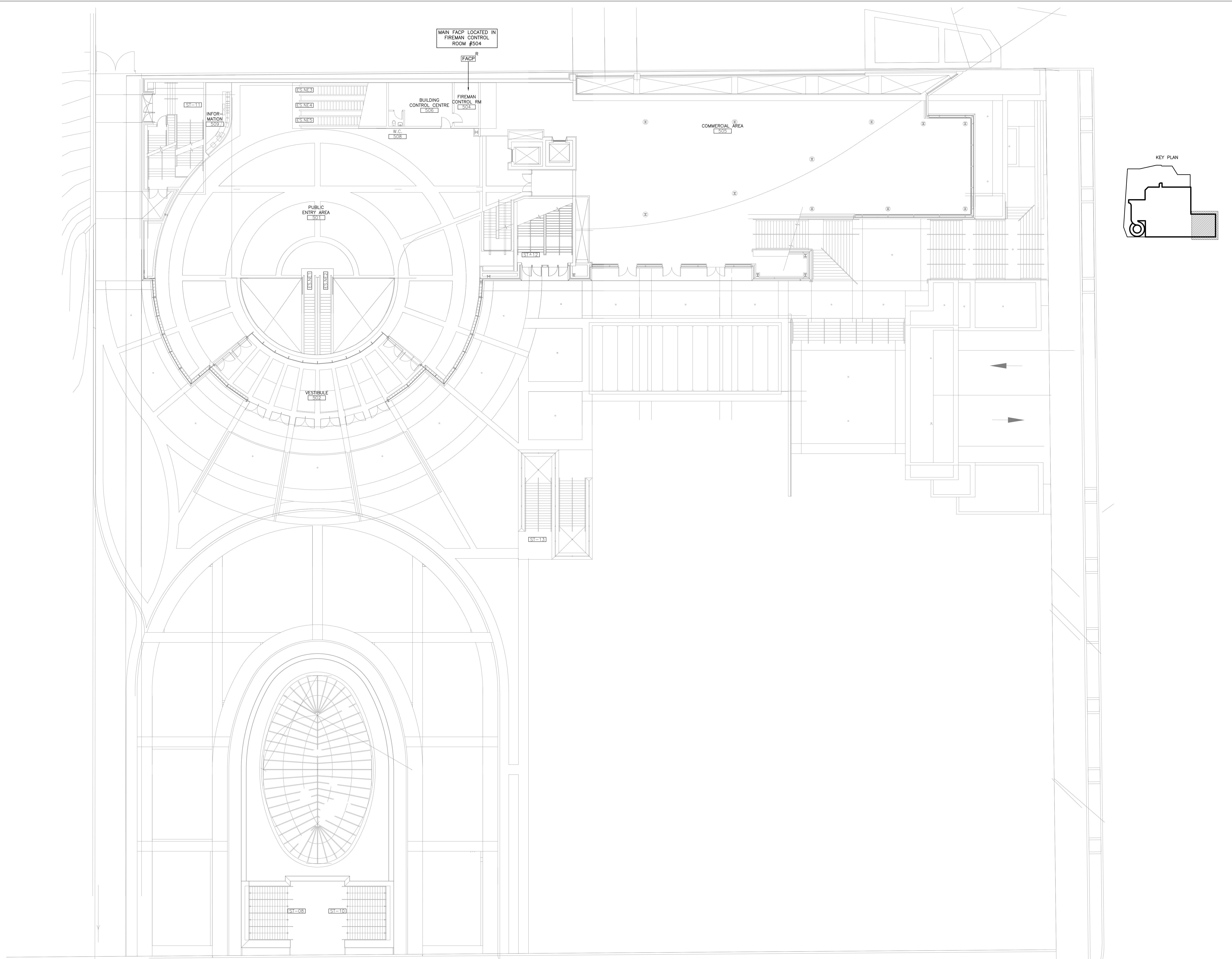
DRAWING TITLE
 PROJECT INFORMATION/DETAILS
 SITE PLAN

JOB NO. 23-0470

SCALE: AS NOTED

DRAWN BY: JR CHECKED BY: MBN

SHEET FA-01



SUBMITTALS

NO	DATE	DESCRIPTION	DWN	CHD
1	MAR 28/2024	ISSUED FOR CLIENT REVIEW	JR	MBN
2	APR 02/2024	ISSUED FOR CLIENT REVIEW	JR	MBN

DEVICE LEGEND

[FACP]	FIRE ALARM CONTROL PANEL
[DGP]	DATA GATHERING PANEL
R	REPLACE (DEVICE TO BE REPLACED)

NORRIS FIRE CONSULTING
 Norris Fire Consulting Inc
 1840 Clements Road, Suite 202, Pickering, ON L4W 3Y2
 Tel: (905) 659-9554, www.norrisfireconsulting.com
 Learn + Grow + Inspire + Execute
 Ontario • Manitoba • Saskatchewan • British Columbia



Professional Engineers Ontario
Limited Engineering Licensee
 Name: M. J. Norris
 Number: 10222897
 Limitations: Signaling and receiving of fire protection and fire alarm systems as per OBC, OAC and NFPA (13, 14, 17A, 20, 22, 24, 30, 70, 101, 2001 & 9000)
 Association of Professional Engineers of Ontario
 APR. 02/24

FIRE ALARM PANEL REPLACEMENT
 TORONTO METRO CONVENTION CENTRE
 222 BREMNER BLVD, TORONTO, ON

DRAWING TITLE
 FLOOR PLAN

JOB NO. 23-0470

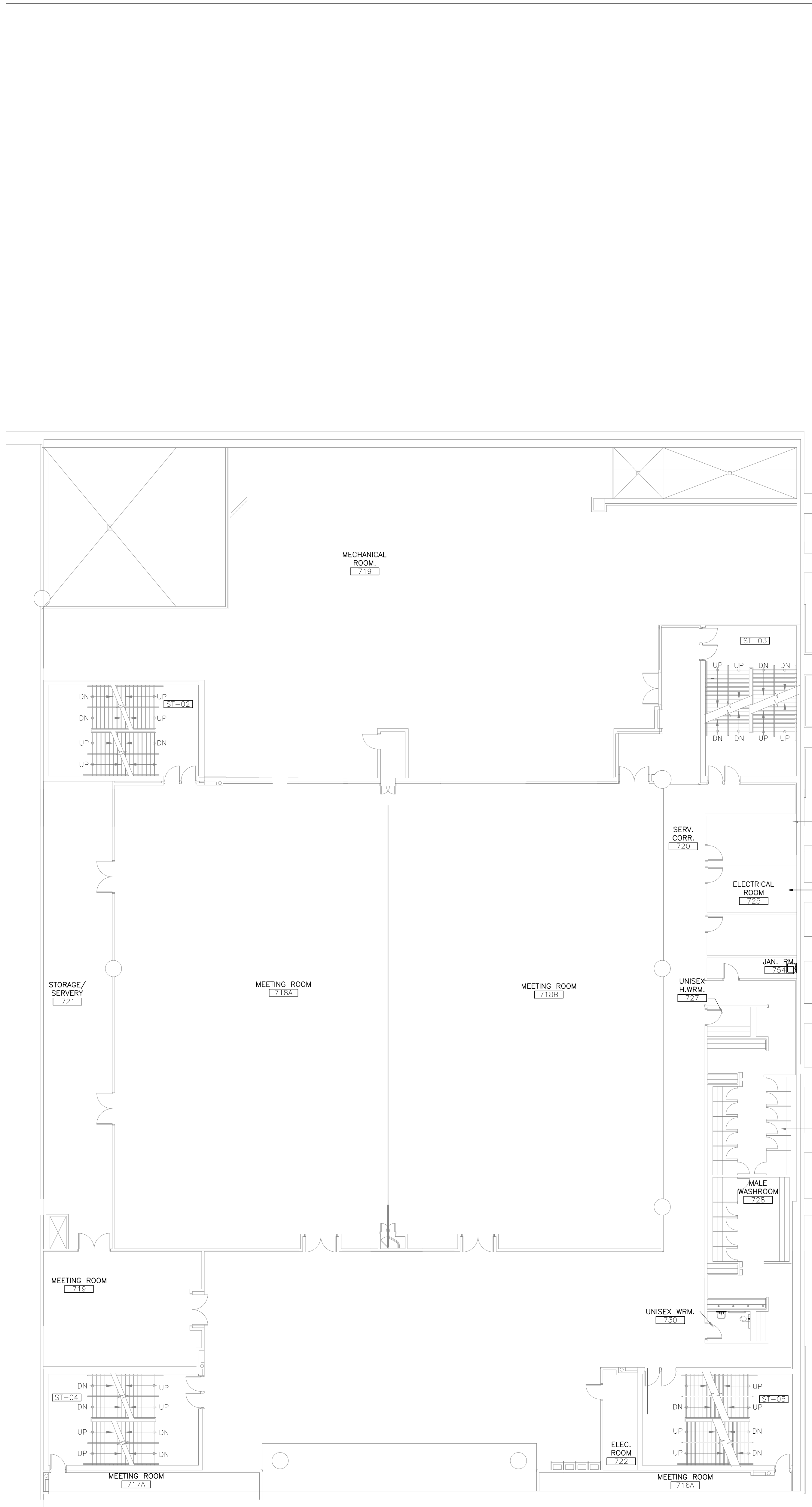
SCALE: AS NOTED

DRAWN BY: JR CHECKED BY: MBN

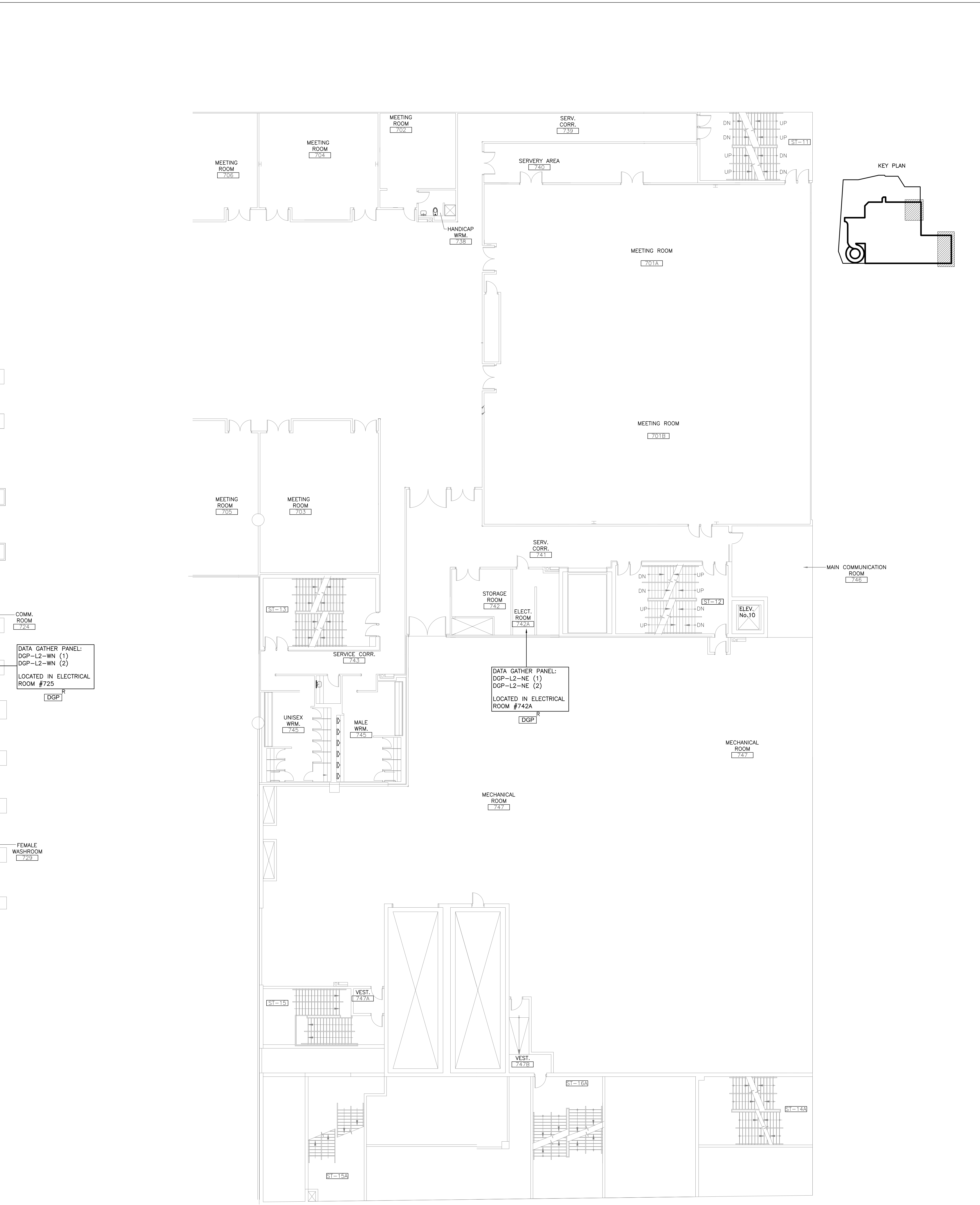
SHEET FA-03

OF 7

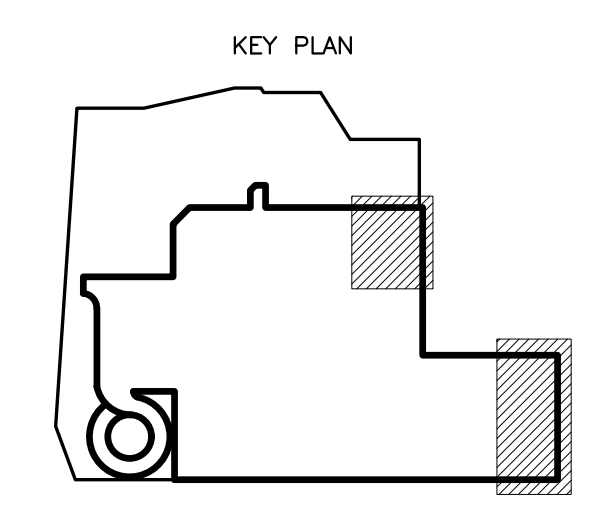
SOUTH BUILDING LEVEL 81.60
 SCALE: N.T.S.



SOUTH BUILDING LEVEL 68.20 WEST
SCALE: N.T.S.



SOUTH BUILDING LEVEL 68.20 NORTH
SCALE: N.T.S.



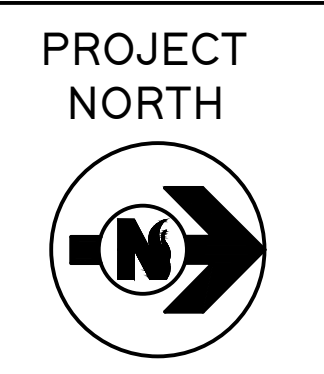
SUBMITTALS

NO	DATE	DESCRIPTION	DWN	CHD
1	M/R 28/02/24	ISSUED FOR CLIENT REVIEW	JR	MBN
2	A/R 02/02/24	ISSUED FOR CLIENT REVIEW	JR	MBN

DEVICE LEGEND

[FACP]	FIRE ALARM CONTROL PANEL
[DGP]	DATA GATHERING PANEL
R	REPLACE (DEVICE TO BE REPLACED)

NORRIS FIRE CONSULTING
Norris Fire Consulting Inc.
1840 Clements Road, Suite 202, Pickering, ON L4W 3Y2
Tel: (905) 659-9554, www.norrisfireconsulting.com
Learn + Grow + Inspire + Execute
Ontario • Manitoba • Saskatchewan • British Columbia



Professional Engineers
Ontario
Limited Engineering Licensee
Name: M.D. J. Norris
Number: 100228907
Limitations: Signaling and receiving of fire protection and fire alarm systems as per OBC, OCE and NFPA (13, 14, 17A, 20, 22, 24, 30, 70, 101, 2001 & 9000)
Association of Professional Engineers of Ontario
APR. 02/24

FIRE ALARM PANEL REPLACEMENT
TORONTO METRO CONVENTION CENTRE
222 BREMNER BLVD, TORONTO, ON

DRAWING TITLE

FLOOR PLAN

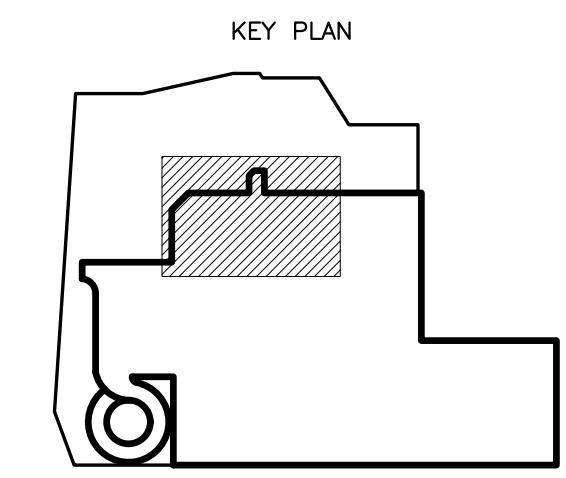
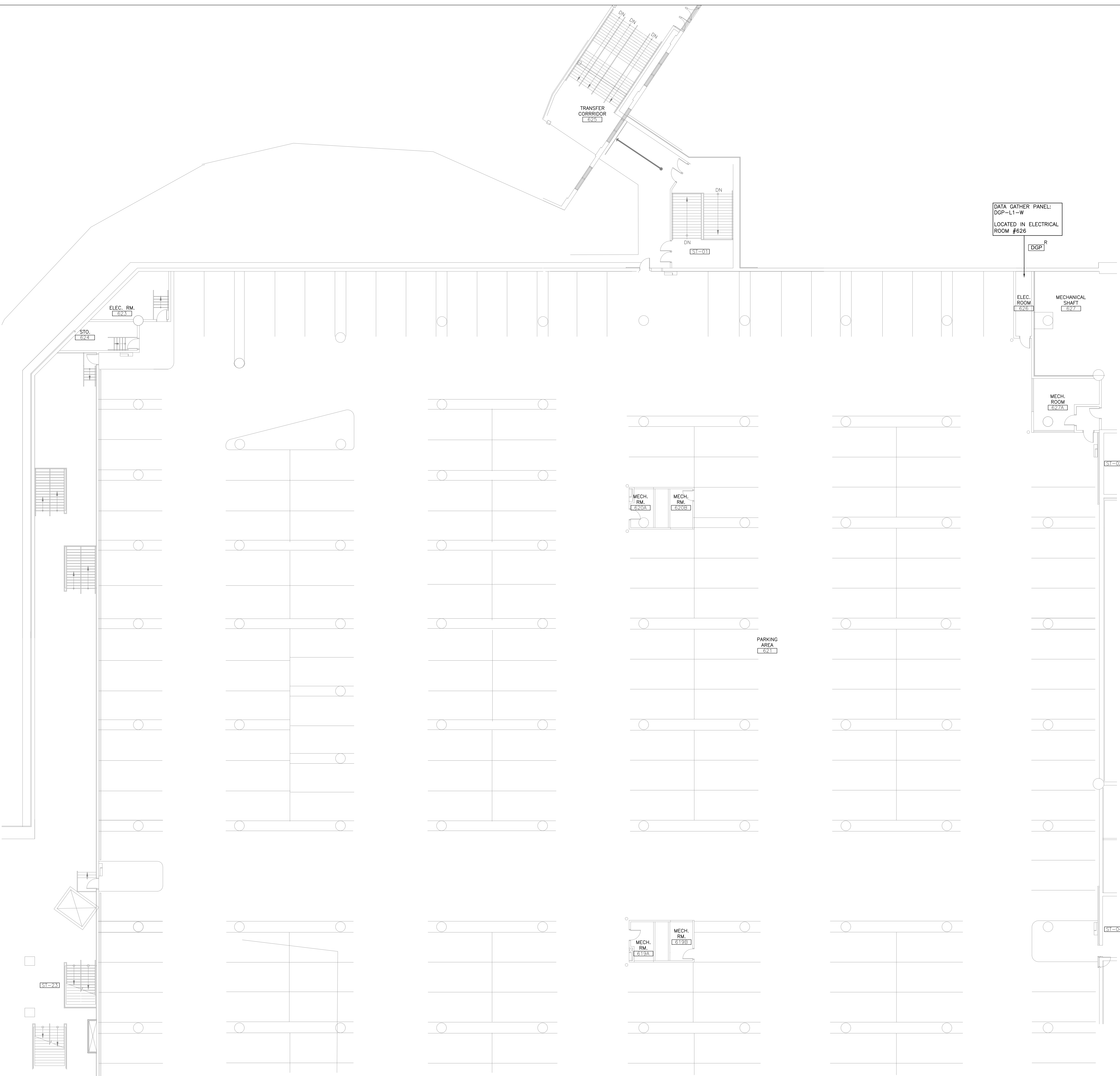
JOB NO. 23-0470

SCALE: AS NOTED

DRAWN BY: JR CHECKED BY: MBN

SHEET FA-04

OF 7



DATA GATHER PANEL:
DGP-L1-W
LOCATED IN ELECTRICAL
ROOM #626

R
[DGP]

ELEC. RM.
#626

MECHANICAL SHAFT
#627

MECH. RM.
#627A

ST-02

MECH. RM.
#628A

MECH. RM.
#628B

PARKING AREA
#621

MECH. RM.
#629A

MECH. RM.
#629B

ST-04

ELEC. RM.
#623

STO.
#624

ST-03

SOUTH BUILDING LEVEL 74.475 PARKING WEST
SCALE: N.T.S.

SUBMITTALS

NO	DATE	DESCRIPTION	DWN	CHD
1	MAR 28/2024	ISSUED FOR CLIENT REVIEW	JR	MBN

DEVICE LEGEND

[FACP]	FIRE ALARM CONTROL PANEL
[DGP]	DATA GATHERING PANEL
R	REPLACE (DEVICE TO BE REPLACED)

NORRIS FIRE CONSULTING
Norris Fire Consulting Inc
1840 Clements Road, Suite 202, Pickering, ON L1W 3Y2
Tel: (905) 659-9554, www.norrisfireconsulting.com
Learn + Grow + Inspire + Execute
Ontario • Manitoba • Saskatchewan • British Columbia

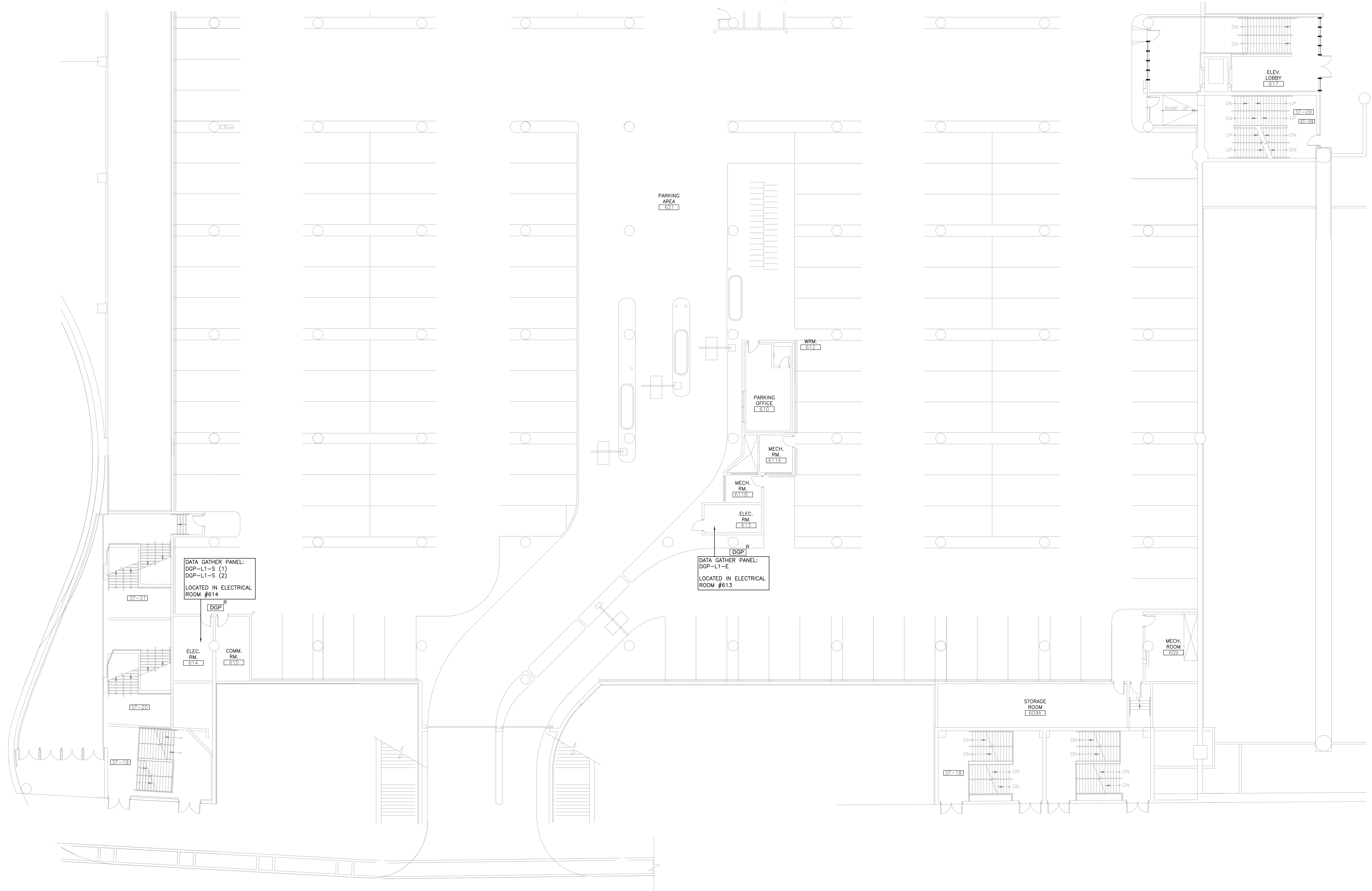
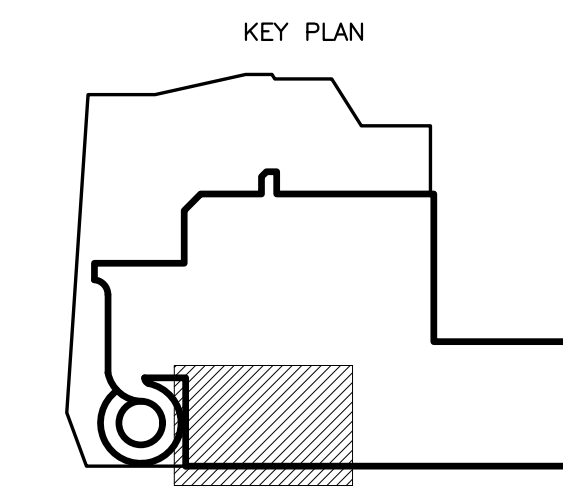
PROJECT NORTH

Professional Engineers
Ontario
Limited Engineering Licensee
Name: M.D. J. Norris
Number: 50222897
Limitations: Signaling and receiving of fire protection and fire alarm systems as per OBC, OCE and NFPA (13, 14, 17A, 20, 22, 24, 30, 70, 101, 2001 & 5000)
Association of Professional Engineers of Ontario
MAR. 26/24

FIRE ALARM PANEL REPLACEMENT
TORONTO METRO CONVENTION CENTRE
222 BREMNER BLVD, TORONTO, ON

DRAWING TITLE
FLOOR PLAN

JOB NO.	23-0470
SCALE:	AS NOTED
DRAWN BY:	JR
CHECKED BY:	MBN
SHEET	FA-05
OF 7	



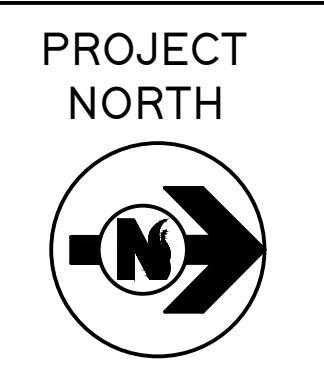
SUBMITTALS

NO	DATE	DESCRIPTION	DWN	CHD
1	MAR 28/2024	ISSUED FOR CLIENT REVIEW	JR	MBN
2	APR 02/2024	ISSUED FOR CLIENT REVIEW	JR	MBN

DEVICE LEGEND

[FACP]	FIRE ALARM CONTROL PANEL
[DGP]	DATA GATHERING PANEL
R	REPLACE (DEVICE TO BE REPLACED)

NORRIS FIRE CONSULTING
 Norris Fire Consulting Inc.
 1840 Clements Road, Suite 202, Pickering, ON L4W 3Y2
 Tel: (905) 659-9554, www.norrisfireconsulting.com
 Learn + Grow + Inspire + Execute
 Ontario • Manitoba • Saskatchewan • British Columbia



Professional Engineers Ontario
Limited Engineering Licensee
 Name: M. J. Norris
 Number: 100228927
 Limitations: Signaling and receiving of fire protection and fire alarm systems as per OAC, OCE and MFPA (13, 14, 17A, 20, 22, 24, 30, 70, 101, 2001 & 5000)
 Association of Professional Engineers of Ontario
 APR: 02/24

FIRE ALARM PANEL REPLACEMENT
 TORONTO METRO CONVENTION CENTRE
 222 BREMNER BLVD, TORONTO, ON

DRAWING TITLE

FLOOR PLAN

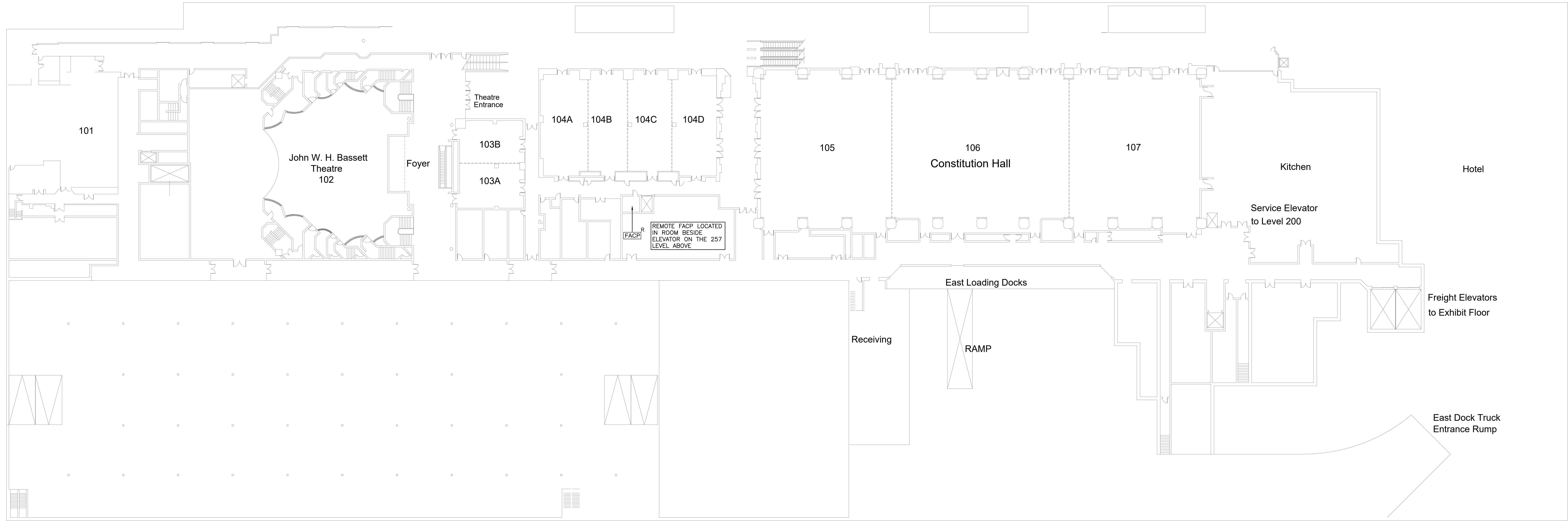
JOB NO. 23-0470

SCALE: AS NOTED

DRAWN BY: JR CHECKED BY: MBN

SHEET FA-06

OF 7



NORTH BUILDING LEVEL 100
SCALE: N.T.S.

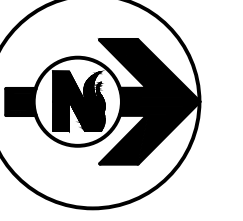
SUBMITTALS

NO	DATE	DESCRIPTION	DWN	CHD
1	M/R 28/02/24	ISSUED FOR CLIENT REVIEW	JR	MBN
2	A/R 02/02/24	ISSUED FOR CLIENT REVIEW	JR	MBN

DEVICE LEGEND	
[FACP]	FIRE ALARM CONTROL PANEL
[DGP]	DATA GATHERING PANEL
R	REPLACE (DEVICE TO BE REPLACED)

NORRIS FIRE CONSULTING
Norris Fire Consulting Inc.
1840 Clements Road, Suite 202, Pickering, ON L4W 3Y2
Tel: (905) 659-9554, www.norrisfireconsulting.com
Learn + Grow + Inspire + Execute
Ontario • Manitoba • Saskatchewan • British Columbia

PROJECT NORTH



Professional Engineers Ontario
Limited Engineering Licensee
Name: M. J. Norris
Number: 10222807
Limitations: Signaling and receiving of fire protection and fire alarm systems as per OBC, OAC and NFPA
(13, 14, 17A, 20, 22, 24, 30, 30.101, 2001 & 9000)
Association of Professional Engineers of Ontario
APR. 02/24

FIRE ALARM PANEL REPLACEMENT
TORONTO METRO CONVENTION CENTRE
222 BREMNER BLVD, TORONTO, ON

DRAWING TITLE

FLOOR PLAN

JOB NO. 23-0470

SCALE: AS NOTED

DRAWN BY: JR CHECKED BY: MBN

SHEET FA-07