

E0.00	GENERAL NOTES, DRAWING LIST AND LEGENDS
E1.00	STORAGE BUILDING & LANDFILL GAS COLLECTION BUILDING FIRE ALARM PROPOSED PLAN
E2.00	FIRE ALARM RISER DIAGRAM
E3.00	EXIT SIGNS DEMOLITION/PROPOSED PLANS & ELECTRICAL DETAILS

1. DO NOT SCALE DRAWINGS FOR INSTALLATION PURPOSES. OBTAIN ALL DIMENSIONS FROM DRAWINGS, MANUFACTURER'S SHOP DRAWINGS, AND ON SITE INSPECTIONS.
2. PRIOR TO INSTALLATION OF BOXES IN WALLS, VERIFY THAT NO INTERFERENCES EXIST.
3. ELECTRICAL TRADES SHALL WORK IN CONJUNCTION WITH EACH OTHER SO AS TO AVOID INTERFERENCES BETWEEN PIPING, DUCTWORK, CONDUIT, LIGHTING FIXTURES, ETC.
4. WORK IN CONJUNCTION WITH THE EXISTING LIGHT LOCATION ON SITE.
5. REVIEW THE ELECTRICAL DRAWINGS AND PROVIDE ON SITE INSPECTIONS TO DETERMINE FULL EXTENT OF PROJECT PRIOR TO SUBMITTING BID.
6. ALL WORK SHALL BE PERFORMED IN ACCORDANCE WITH THE ONTARIO BUILDING CODE (OBC), ONTARIO ELECTRICAL SAFETY CODE (OESC) AND THE LOCAL AUTHORITIES REQUIREMENTS.
7. THE ELECTRICAL CONTRACTOR SHALL COORDINATE THE INSTALLATION WITH THE WORK OF OTHER TRADES. PROVIDE HORIZONTAL AND/OR VERTICAL OFFSETS AS REQUIRED TO SUIT THIS COORDINATION.
8. ALL WIRING SHALL BE A MINIMUM #12 AWG IN CONDUIT SUITABLE FOR THE APPLICATION.
9. AC90 (BX) SHALL ONLY BE ALLOWED FOR SHORT RUNS OF LESS THAN 5 FEET IN LENGTH, UNLESS OTHERWISE NOTED.
10. ALL MATERIALS SHALL BEAR A CSA (CANADIAN STANDARDS ASSOCIATION) LABEL.
11. ELECTRICAL SWITCHES, OUTLETS, PUSH-BUTTONS ETC. SHALL COMPLY WITH ACCESSIBILITY FOR ONTARIANS WITH DISABILITIES ACT (AODA) FOR MOUNTING HEIGHTS AND LOCATION WHERE APPLICABLE.
12. PROVIDE FIRE-STOP MATERIAL AS REQUIRED FOR ALL WALL PENETRATIONS TO MAINTAIN THE SMOKE SEAL AND FIRE RATING. FOR RECESSED JUNCTION BOXES USE HILT - FIRE BLOK.
13. UPON THE COMPLETION OF THE CONTRACT, ISSUE A FINAL CERTIFICATE WHICH MAY INDICATE THE DATE OF COMPLETION OF WORK, REPAIR OR REPLACE ANY DEFECTS WHICH MAY APPEAR IN ANY OF THE WORK WITHIN ONE (1) YEAR.

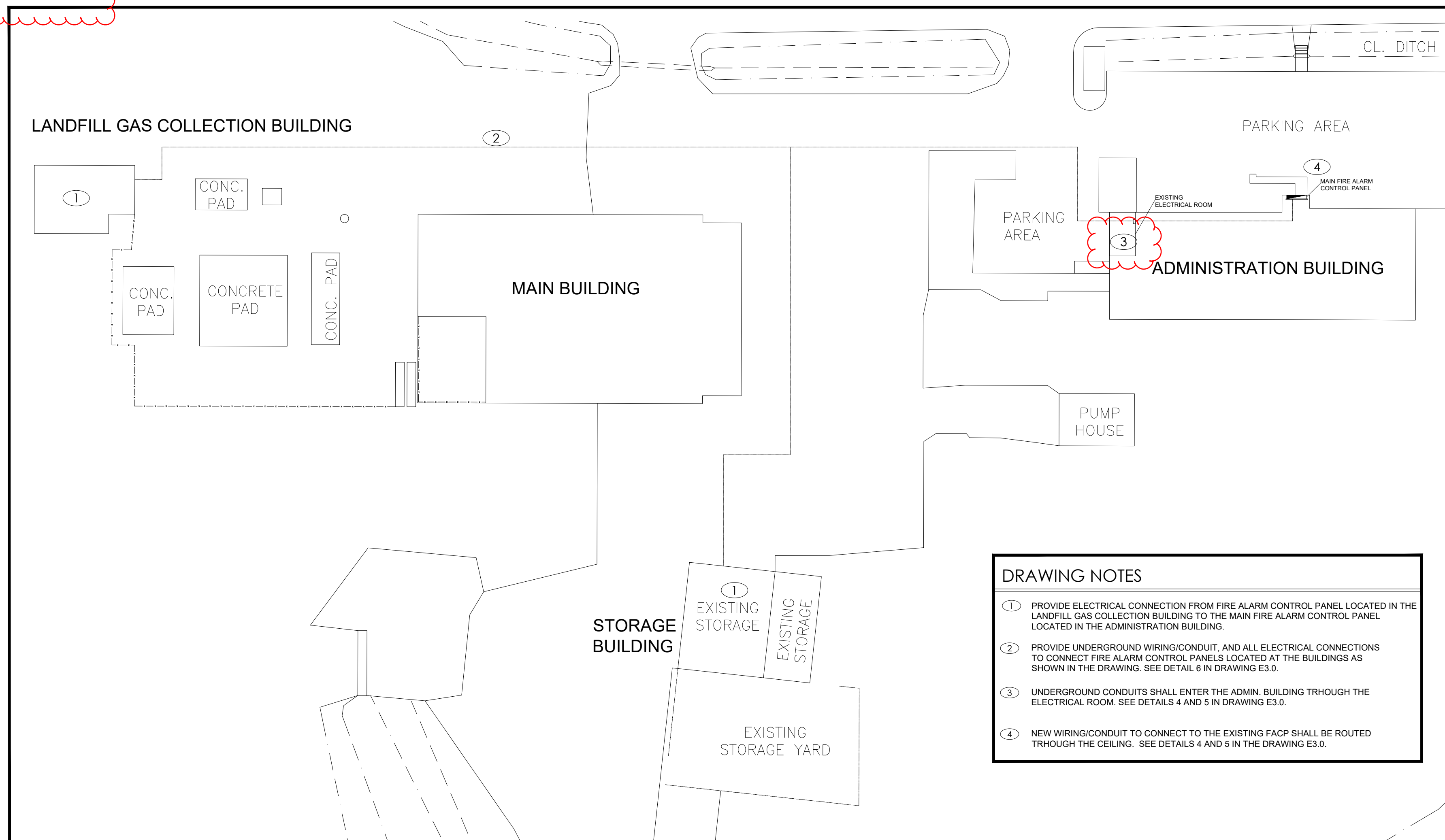
THIS LEGEND OF SYMBOLS REPRESENTS MANTECON PARTNERS INC. STANDARD LEGEND. ALL SYMBOLS MAY NOT APPEAR ON DRAWINGS.	
SYMBOL	DESCRIPTION
	BELL AND STROBE - WALL
	HORN - WALL
	STROBE - CEILING
	FIRE ALARM PULLSTATION
	HORN AND STROBE - WALL
	SMOKE DETECTOR - CEILING
	HEAT DETECTOR - CEILING
	FIRE ALARM/ANNUNCIATOR PANEL
	END OF LINE RESISTOR
	EXIT SIGN - SINGLE FACE - WALL
	BATTERY PACK - WALL




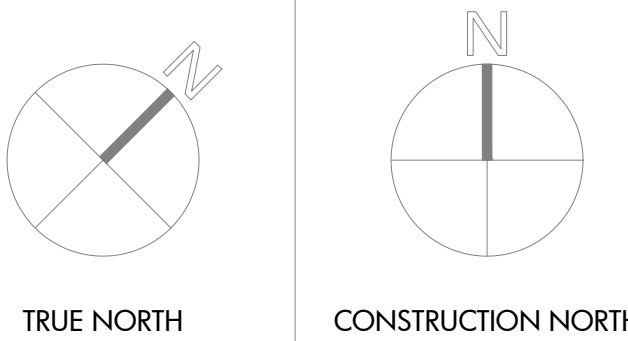
1 SITE MAP
E0.00 SCALE: NTS

[illegible]

THIS LEGEND OF SYMBOLS REPRESENTS MANTIECON PARTNERS INC. STANDARD LEGEND. ALL SYMBOLS MAY NOT APPEAR ON DRAWINGS.	
SYMBOL	DESCRIPTION
R	REMOVE
R/R	REMOVE AND REINSTALL
ER	EXISTING TO BE RELOCATED
EX	EXISTING TO REMAIN
GFI	GROUND FAULT INTERRUPT



2 SITE PLAN
E0.00 SCALE: 1:500



MANTECON
PARTNERS
STRUCTURAL MECHANICAL ELECTRICAL CIVIL
ENGINEERS

15 Foundry Street, Dundas, ON, L9H 2V6
Phone: (905)648-0373 www.manteconpartners.com

REVIEW ALL DRAWINGS AND VERIFY ALL DIMENSIONS AT THE SITE. DO NOT SCALE THE DRAWINGS. REPORT ALL DISCREPANCIES TO THE ENGINEER BEFORE PROCEEDING WITH ANY CONSTRUCTION OR SHOP FABRICATION. ALL DRAWINGS, SPECIFICATIONS AND RELATED DOCUMENTS ARE THE COPYRIGHT PROPERTY OF 'MANTECON PARTNERS' AND MUST BE RETURNED UPON REQUEST. REPRODUCTION OF DRAWINGS, SPECIFICATIONS AND RELATED DOCUMENTS IN PART OR WHOLE IS FORBIDDEN WITHOUT THE ENGINEER'S WRITTEN PERMISSION.

[illegible]

4	ISSUED FOR ADDENDUM	2024-8-14	A.S.
3	ISSUED FOR TENDER	2024-05-14	A.S.
2	ISSUED FOR PERMIT	2024-05-07	A.S.
1	ISSUED FOR 80 % REVIEW	2024-02-22	F.S.
NO.	ISSUED	DATE	BY



CUENT

Regional Municipality of Halton

PROJECT:

FIRE ALARM REPLACEMENT
5400 REGIONAL RD 25,
MILTON ON

LANDFILL GAS COLLECTION
BUILDING

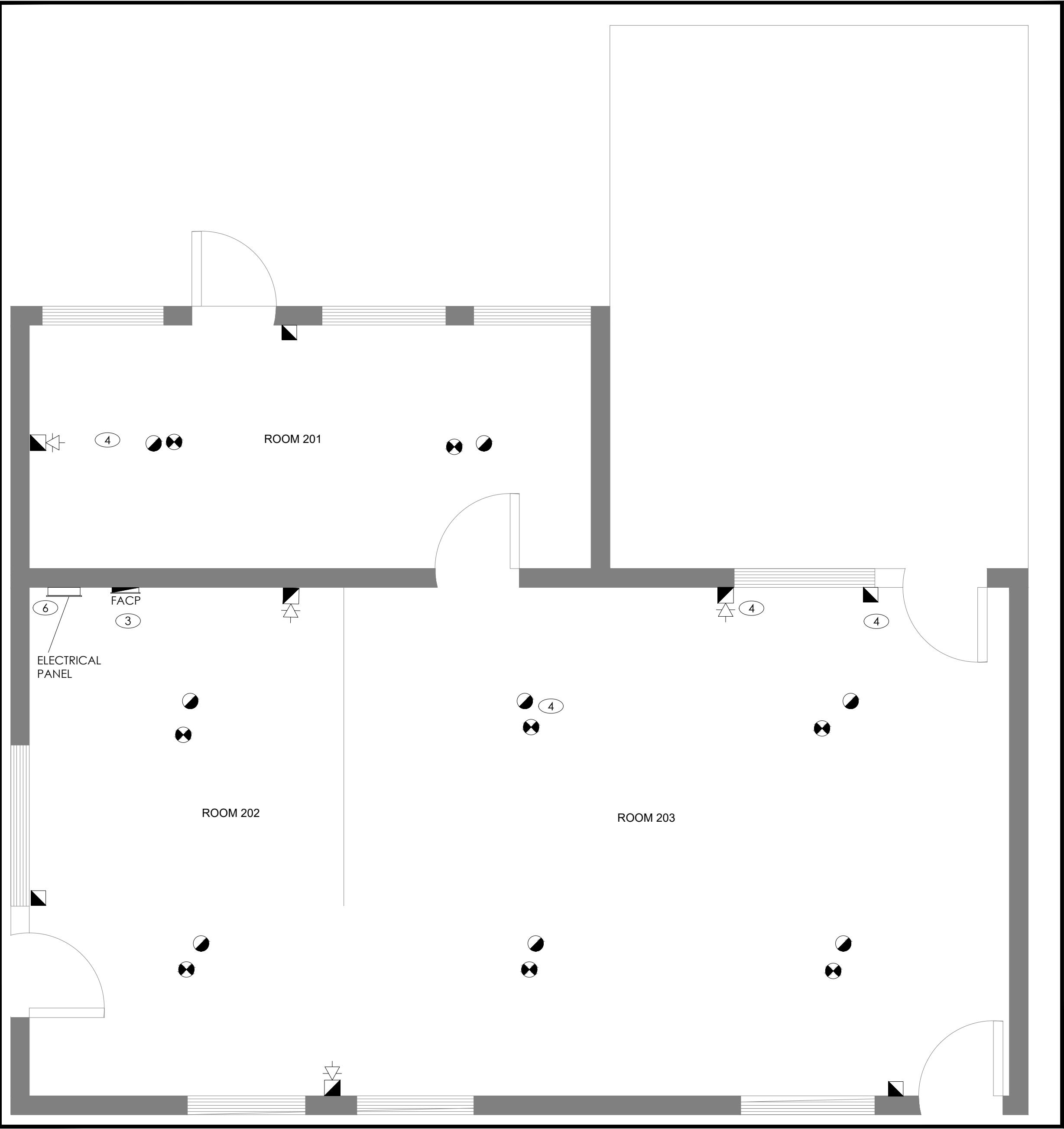
DRAWING TITLE:

GENERAL NOTES, DRAWING LIST
AND LEGENDS

DRAWN BY: A.S.	SCALE: AS INDICATED
CHECKED BY: N.A	DRAWING NUMBER: E0.00
DATE: JAN-2024	
PROJECT NUMBER: 23-119A	

DRAWING NOTES

- 1
- THE SCOPE OF WORK EXCLUDES THE ADMINISTRATION BUILDING, HOWEVER THE EXISTING MAIN FIRE ALARM CONTROL PANEL AND REMOTE ANNUNCIATOR ARE LOCATED IN THE ADMINISTRATION BUILDING WHICH IS CONNECTED WITH THE STORAGE BUILDING & LANDFILL GAS COLLECTION BUILDING.
- 2
- ENSURE EACH NEW SUB FIRE ALARM CONTROL PANEL INSTALLED IS CONNECTED BACK TO THE EXISTING MAIN FIRE ALARM CONTROL PANEL (EDWARDS - FIRE SHIELD) IN THE ADMINISTRATION BUILDING USING THE NEW COMMUNICATION LINK. UPON ACTIVATION OF ANY SUB FIRE ALARM CONTROL PANEL, THE EXISTING MAIN FIRE ALARM CONTROL PANEL SHALL PROVIDE A SIGNAL TO THE FIRE DEPARTMENT.
- 3
- PROVIDE NEW SINGLE STAGE FIRE ALARM PANEL, SURFACE MOUNTED, CONVENTIONAL OR ADDRESSABLE TYPE, AND ULC APPROVED.
- 4
- PROVIDE NEW FIRE ALARM DEVICES (ULC APPROVED) AS SHOWN IN THE DRAWING. DETAILS, SPECIFICATIONS, AND FINAL LOCATION TO BE DETERMINED.
- 5
- PROVIDE NEW TANDEM BREAKERS 15A1P TO REPLACE ONE OF THE EXISTING 15A1P BREAKERS IN THE ELECTRICAL PANEL LPA, MAKING POSSIBLE TO FEED THE NEW FIRE ALARM CONTROL PANEL.
- 6
- PROVIDE NEW 15A1P CIRCUIT BREAKER, IN THE EXISTING ELECTRICAL PANEL, TO FEED FIRE ALARM CONTROL PANEL.

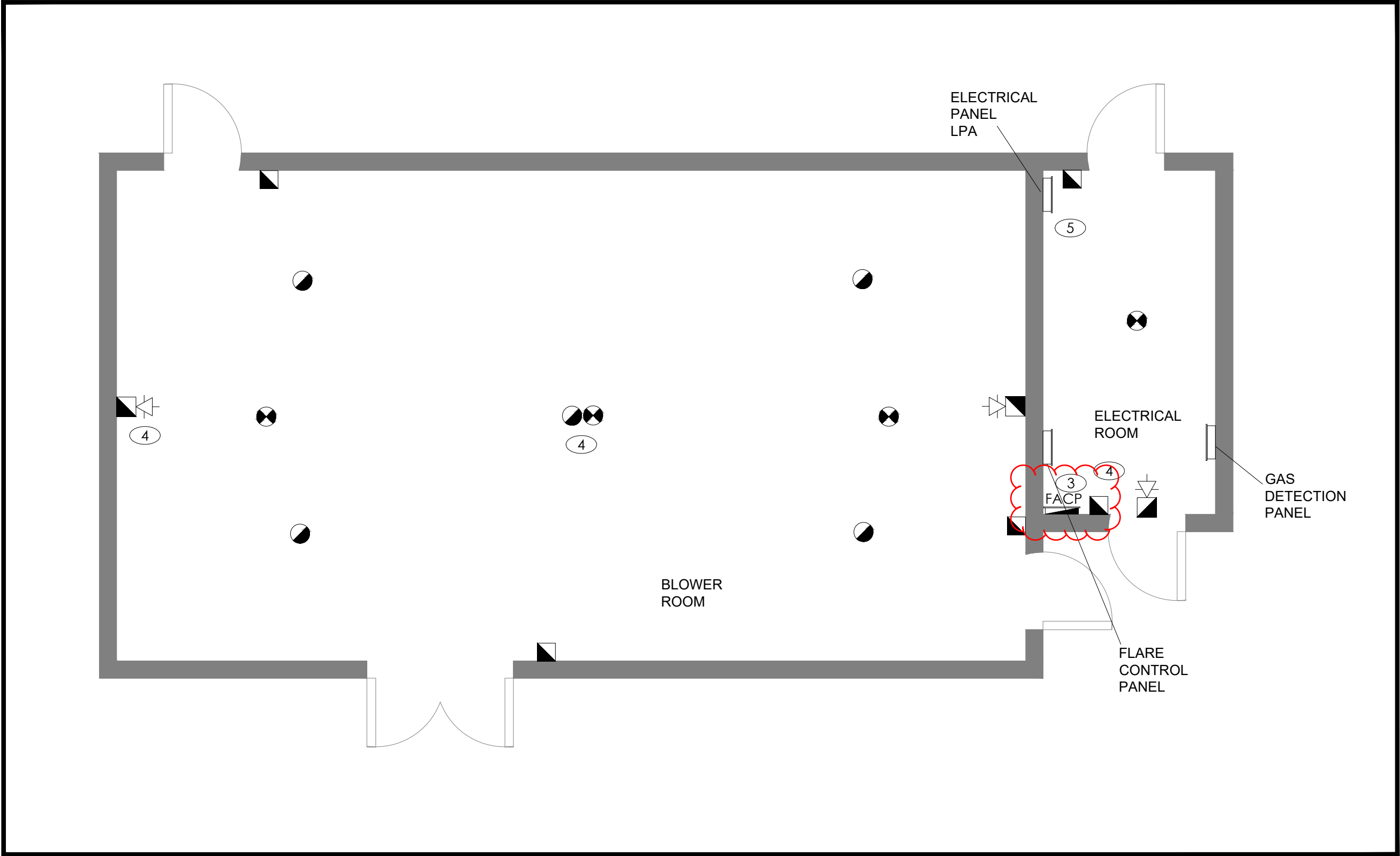


1

E1.0

SCALE: 1:80

STORAGE BUILDING FIRE ALARM PROPOSED PLAN

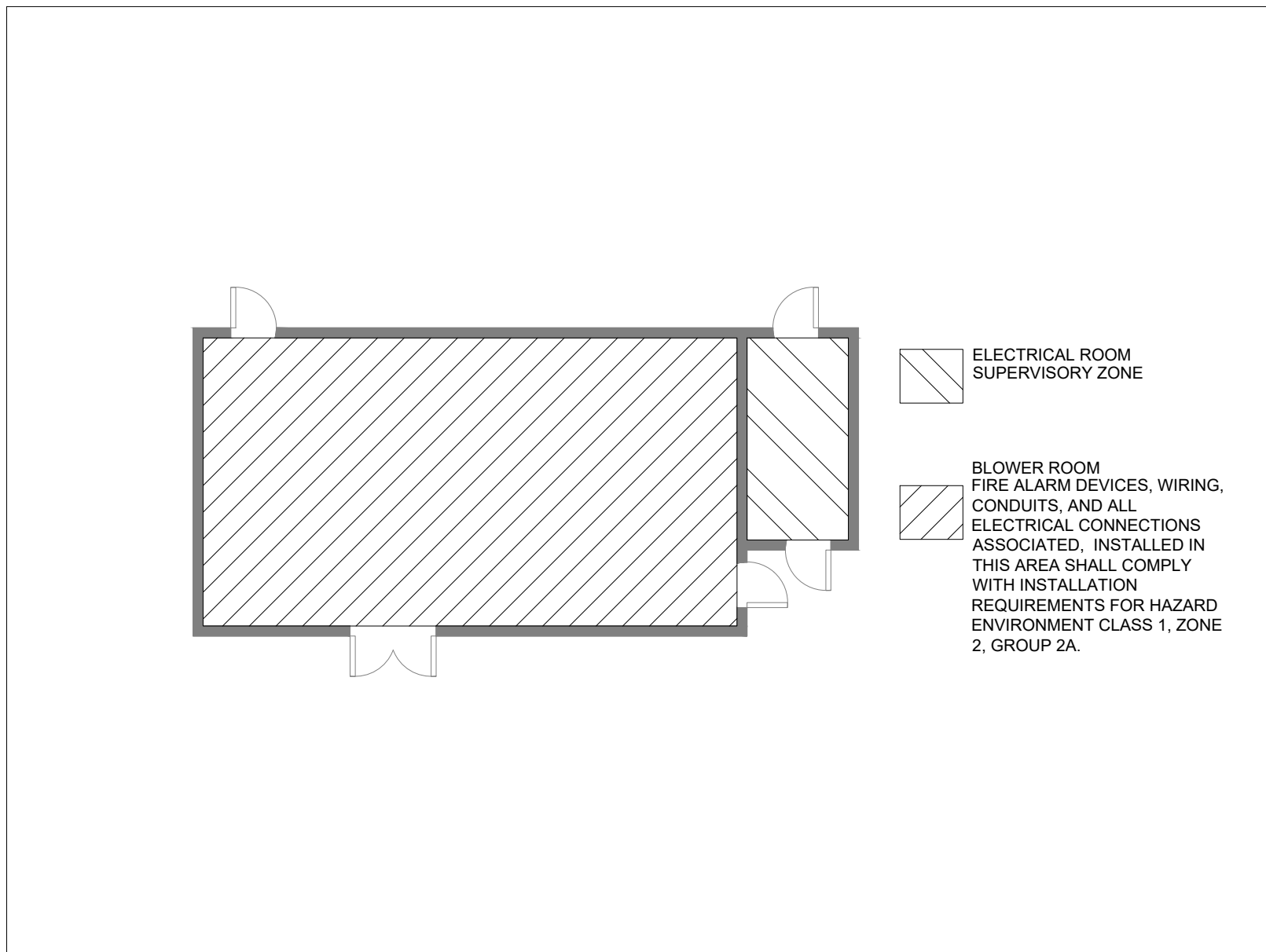


2

E1.0

SCALE: 1:80

LANDFILL GAS COLLECTION BUILDING FIRE ALARM PROPOSED PLAN

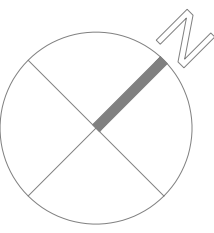


3

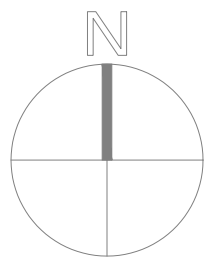
E1.0

SCALE: 1:80

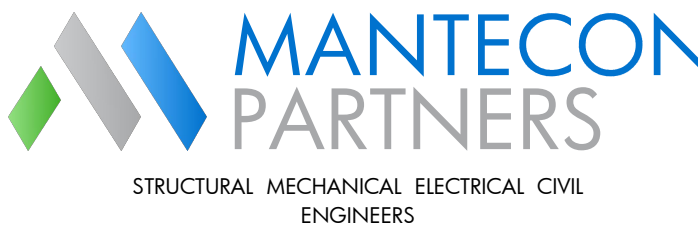
HAZARDOUS CLASSIFICATION PLAN



TRUE NORTH



CONSTRUCTION NORTH



STRUCTURAL MECHANICAL ELECTRICAL CIVIL ENGINEERS

15 Foundry Street, Dundas, ON, L9H 2V6
Phone: (905)648-0373 www.manteconpartners.com

REVIEW ALL DRAWINGS AND VERIFY ALL DIMENSIONS AT THE SITE. DO NOT SCALE THE DRAWINGS. REPORT ALL DISCREPANCIES TO THE ENGINEER BEFORE PROCEEDING WITH ANY CONSTRUCTION OR SHOP FABRICATION. ALL DRAWINGS, SPECIFICATIONS AND RELATED DOCUMENTS ARE THE COPYRIGHT PROPERTY OF 'MANTECON PARTNERS' AND MUST BE RETURNED UPON REQUEST. REPRODUCTION OF DRAWINGS, SPECIFICATIONS AND RELATED DOCUMENTS IN PART OR WHOLE IS FORBIDDEN WITHOUT THE ENGINEER'S WRITTEN PERMISSION.

4	ISSUED FOR ADDENDUM	2024-8-14	A.S.
3	ISSUED FOR TENDER	2024-05-14	A.S.
2	ISSUED FOR PERMIT	2024-05-07	A.S.
1	ISSUED FOR 80 % REVIEW	2024-02-22	F.S.
NO.	ISSUED	DATE	BY



CLIENT
Regional Municipality of Halton

PROJECT:
FIRE ALARM REPLACEMENT
5400 REGIONAL RD 25,
MILTON ON

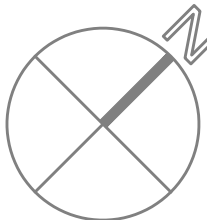
DRAWING TITLE:
STORAGE BUILDING & LANDFILL
GAS COLLECTION BUILDING FIRE
ALARM PROPOSED PLAN

DRAWN BY: F.S	SCALE: AS INDICATED
CHECKED BY: N.A	DRAWING NUMBER:
DATE: JAN-2024	E1.0
PROJECT NUMBER: 23-119	

August 15, 2024 – 04:35pm Plotted by: astockler

DRAWING NOTES

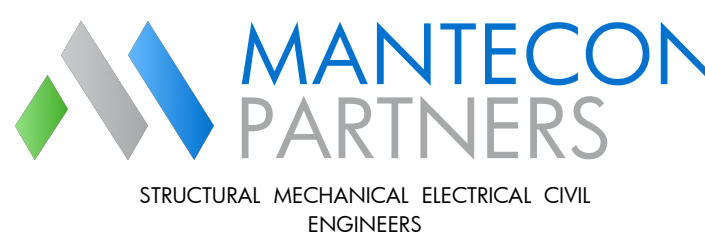
- 1 SUPPLY AND INSTALL A NEW SINGLE STAGE FIRE ALARM PANEL, SURFACE MOUNTED, CONVENTIONAL OR ADDRESSIBLE TYPE, AND ULC APPROVED.
- 2 PROVIDE NEW ALARM SIGNAL FROM GAS DETECTION PANEL AND FLARE CONTROL PANEL TO THE FIRE ALARM CONTROL PANEL, AS SHOWN IN THE DRAWING.



TRUE NORTH



CONSTRUCTION NORTH



15 Foundry Street, Dundas, ON, L9H 2V6
Phone: (905)648-0373 www.manteconpartners.com

REVIEW ALL DRAWINGS AND VERIFY ALL DIMENSIONS AT THE SITE. DO NOT SCALE THE DRAWINGS. REPORT ALL DISCREPANCIES TO THE ENGINEER BEFORE PROCEEDING WITH ANY CONSTRUCTION OR SHOP FABRICATION. ALL DRAWINGS, SPECIFICATIONS AND RELATED DOCUMENTS ARE THE COPYRIGHT PROPERTY OF "MANTECON PARTNERS" AND MUST BE RETURNED UPON REQUEST. REPRODUCTION OF DRAWINGS, SPECIFICATIONS AND RELATED DOCUMENTS IN PART OR WHOLE IS FORBIDDEN WITHOUT THE ENGINEER'S WRITTEN PERMISSION.

NO.	ISSUED	DATE	BY
4	ISSUED FOR ADDENDUM	2024-8-14	A.S.
3	ISSUED FOR TENDER	2024-05-14	A.S.
2	ISSUED FOR PERMIT	2024-05-07	A.S.
1	ISSUED FOR 80 % REVIEW	2024-02-22	F.S.



CLIENT
Regional Municipality of Halton

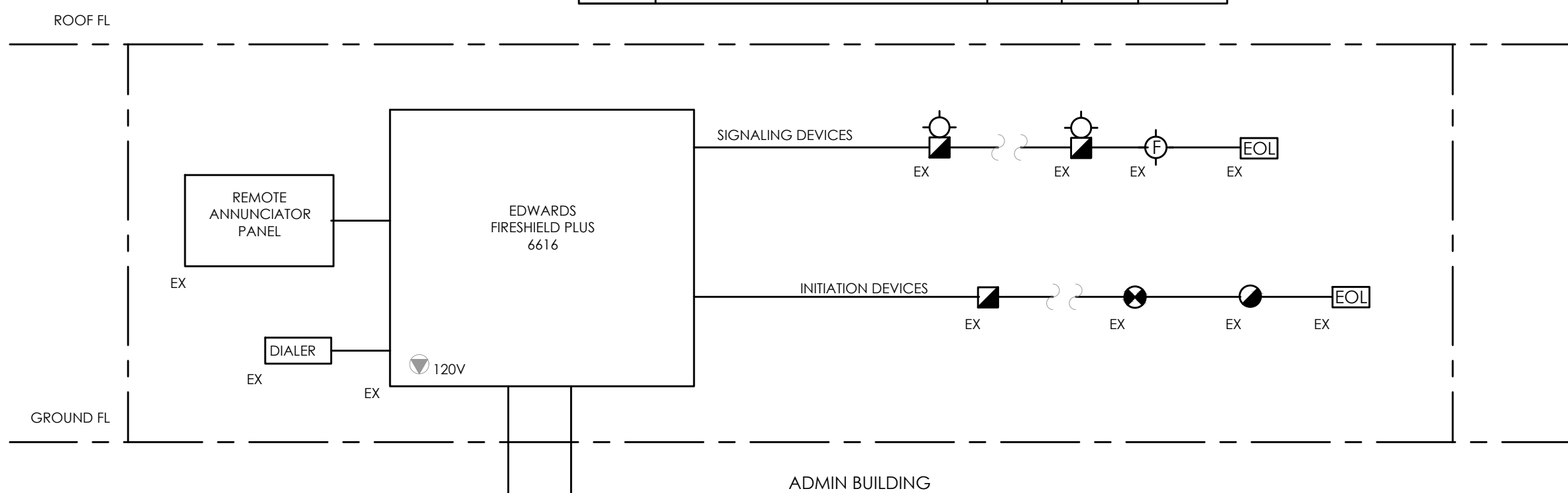
PROJECT:
FIRE ALARM REPLACEMENT
5400 REGIONAL RD 25,
MILTON ON

DRAWING TITLE:
FIRE ALARM RISER DIAGRAM

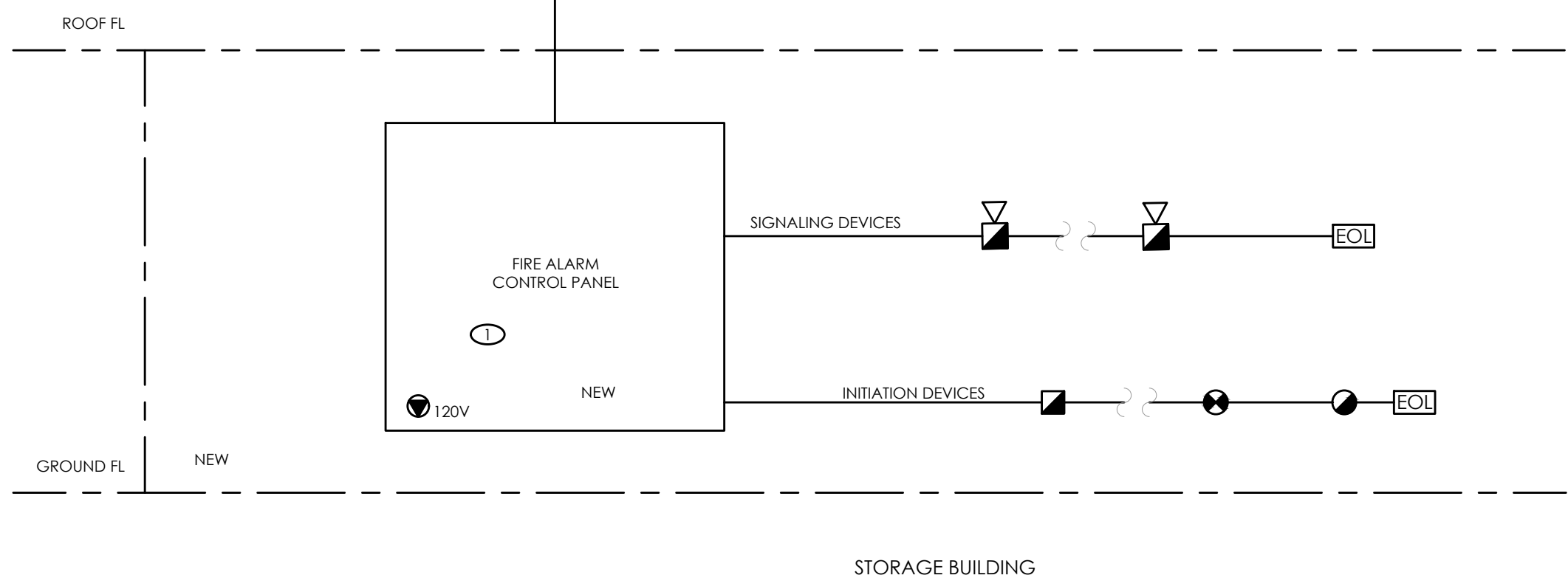
DRAWN BY: F.S	SCALE: AS INDICATED
CHECKED BY: N.A	DRAWING NUMBER:
DATE: JAN-2024	E2.0
PROJECT NUMBER: 23-119	

August 15, 2024 - 04:35pm Plotted by: astockler

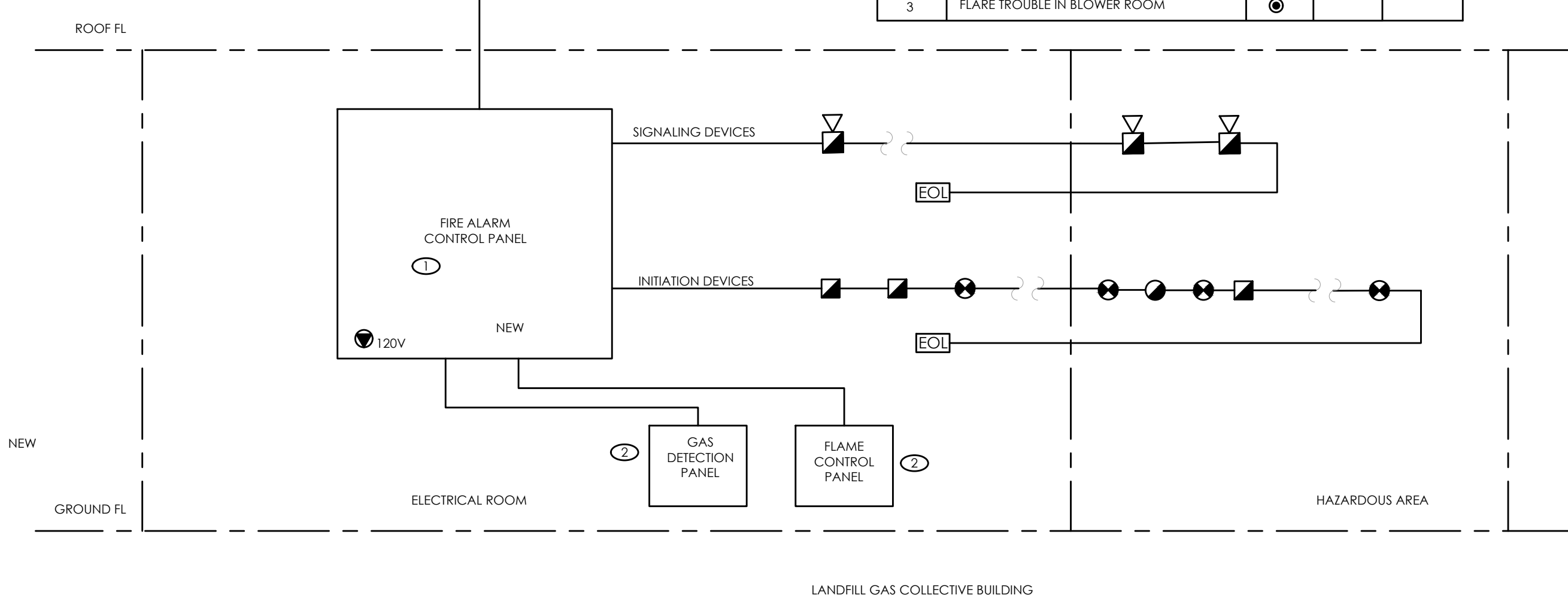
FIRE ALARM ZONE SCHEDULE		NOTIFICATION LED		
ZONE	DESCRIPTION	ALARM	TROUBLE	SUP/MON
1	MAINTENANCE GARAGE EX	●		
2	PUMP HOUSE EX	●		
3	SCALE HOUSE EX	●		
4	CONTAINER STATION EX	●		
5	ADMIN OFFICE EX	●		
6	TRANSFER STATION EX	●		
7	DUCT SUPPLY EX	●		
8	DUCT RETURN EX	●		
9	STORAGE BUILDING NEW	●		
10	LANDFILL GAS COLLECTION BUILDING NEW	●		

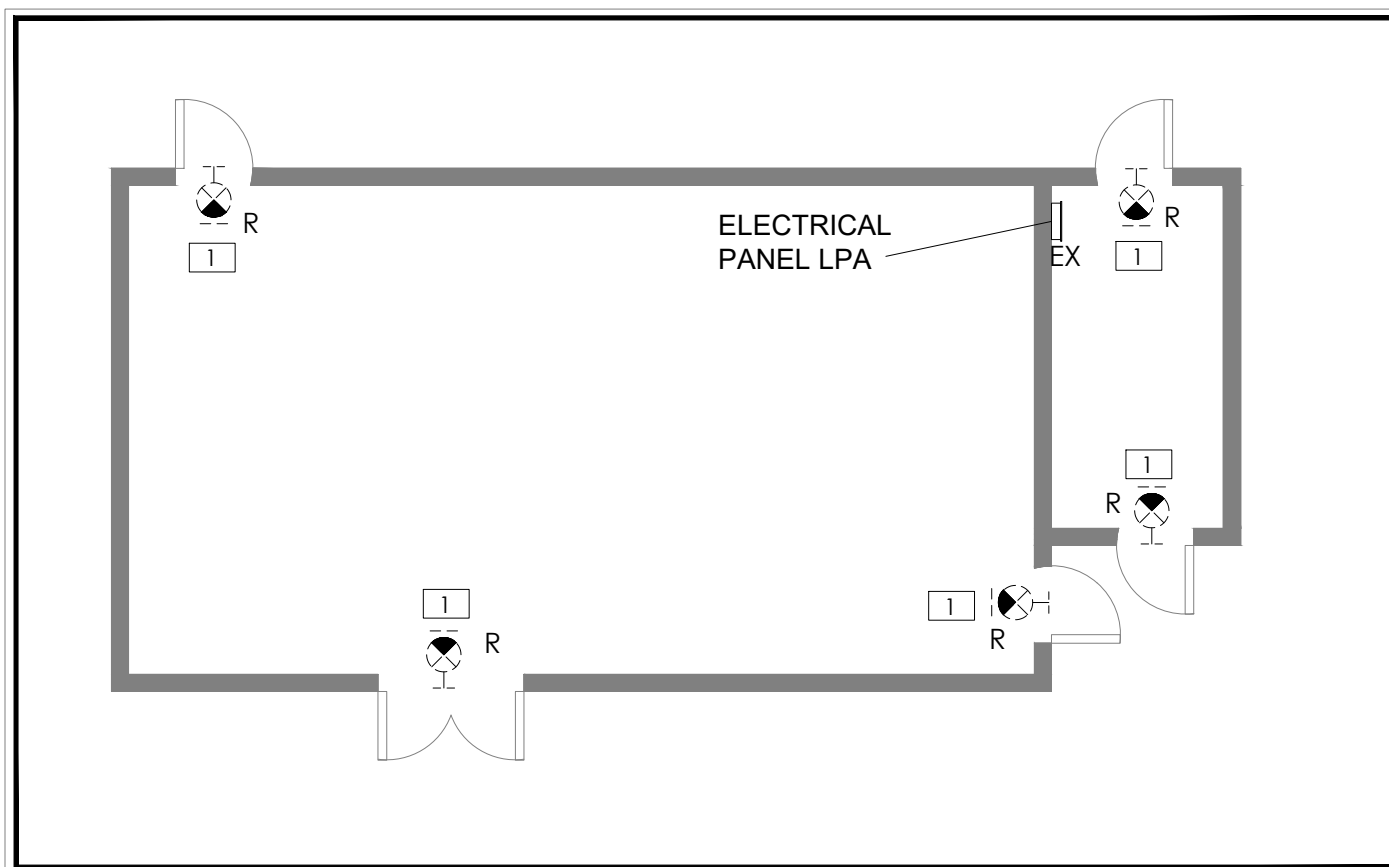


FIRE ALARM ZONE SCHEDULE		NOTIFICATION LED		
ZONE	DESCRIPTION	ALARM	TROUBLE	SUP/MON
1	STORAGE 202 & 203	●		
2	STORAGE 201	●		

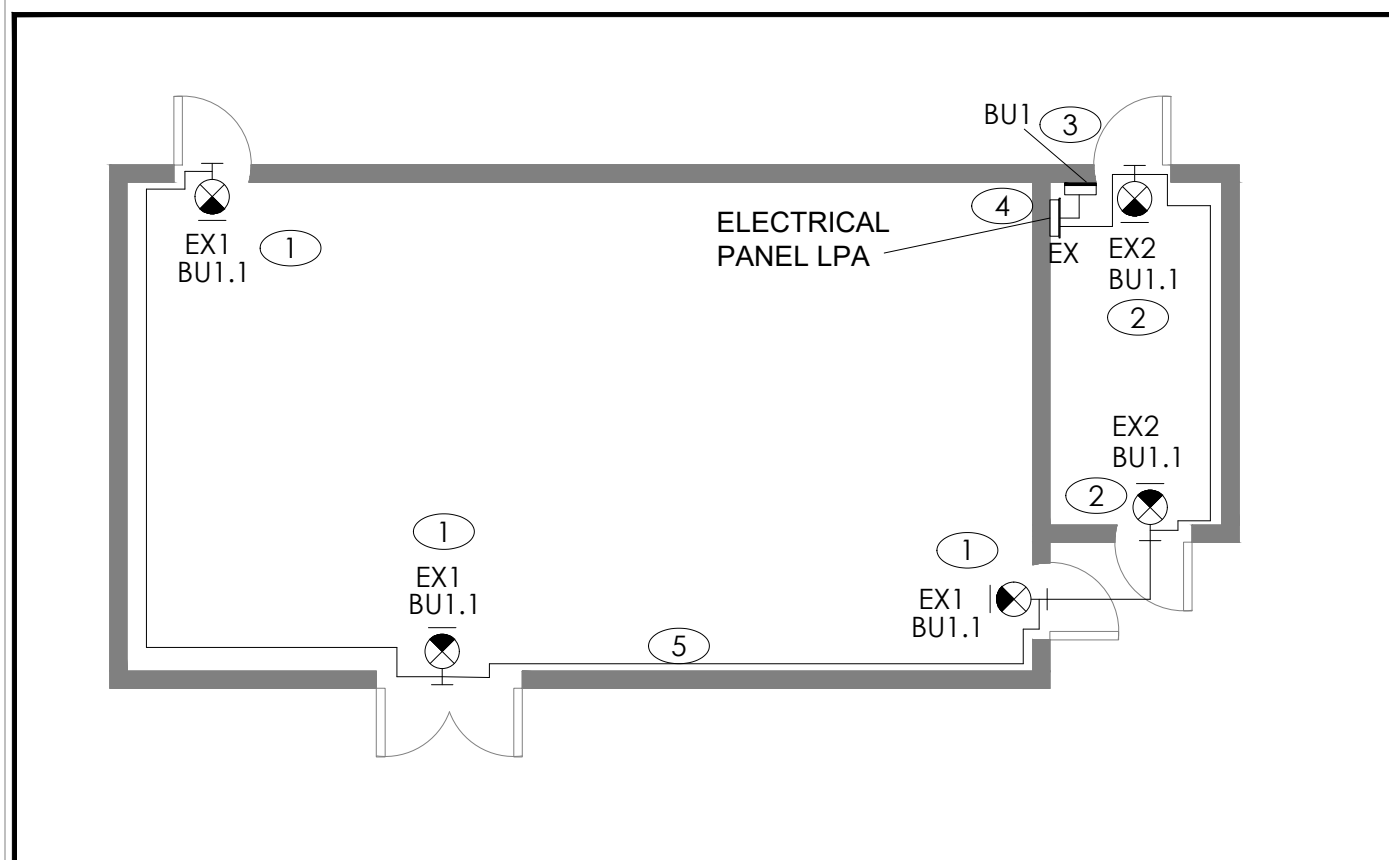


FIRE ALARM ZONE SCHEDULE		NOTIFICATION LED		
ZONE	DESCRIPTION	ALARM	TROUBLE	SUP/MON
1	GAS DETECTOR IN BLOWER ROOM	●		
2	GAS DETECTOR IN ELECTRICAL ROOM	●		
3	FLARE TROUBLE IN BLOWER ROOM	●		





1 EXIT SIGNS DEMOLITION PLAN
E3.0 SCALE: 1:150



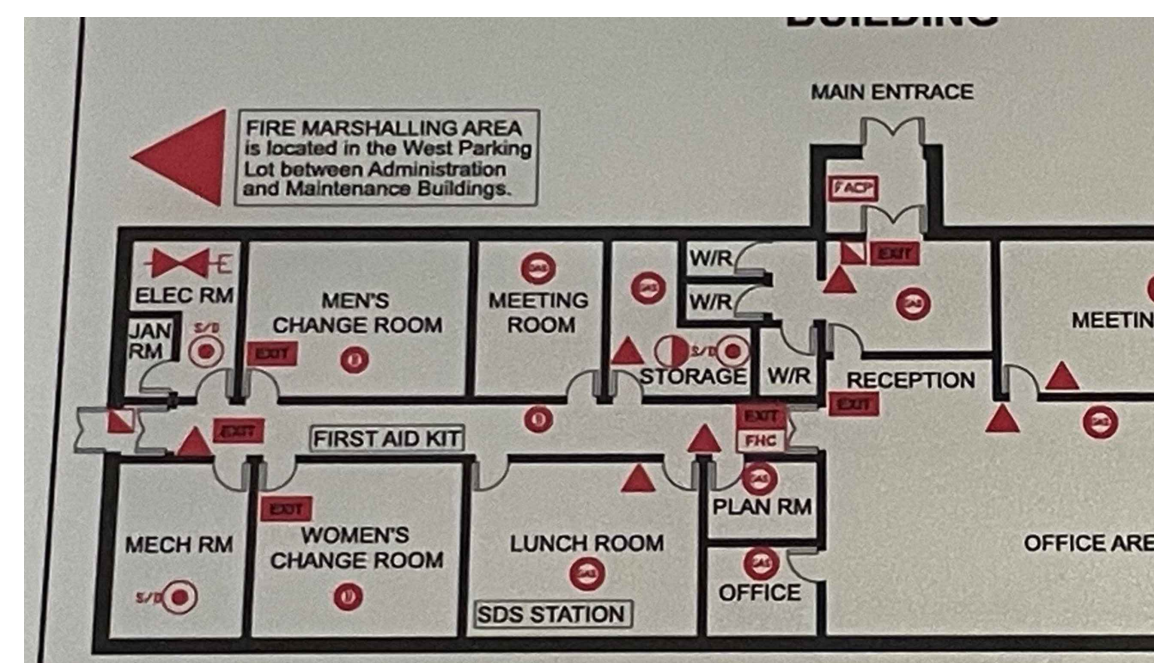
2 EXIT SIGNS PROPOSED PLAN
E3.0 SCALE: 1:150



3 ADMINISTRATION BUILDING LAYOUT

DEMOLITION NOTES

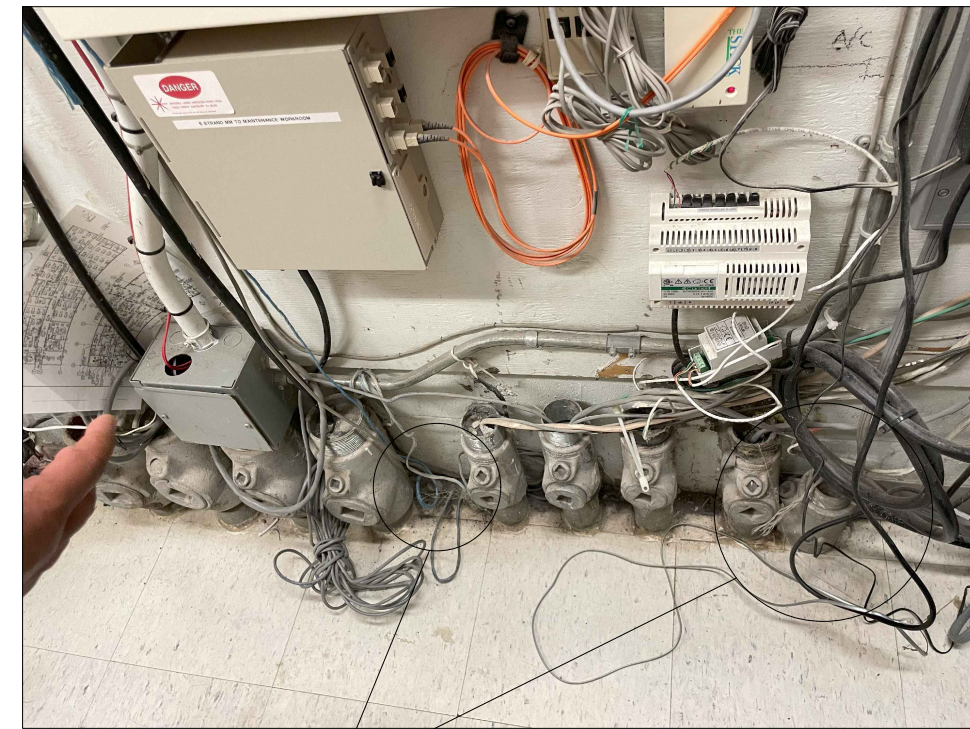
- 1 DEMOLISH AND REMOVE THE EXISTING EXIT SIGNS FROM THE BLOWER ROOM AND ELECTRICAL ROOM. REMOVE BACK ALL ELECTRICAL CONNECTIONS FROM THE EXIT SIGNS BACK TO THE SOURCE, IF APPLICABLE, AND MAKE IT SAFE FOR REUSE.



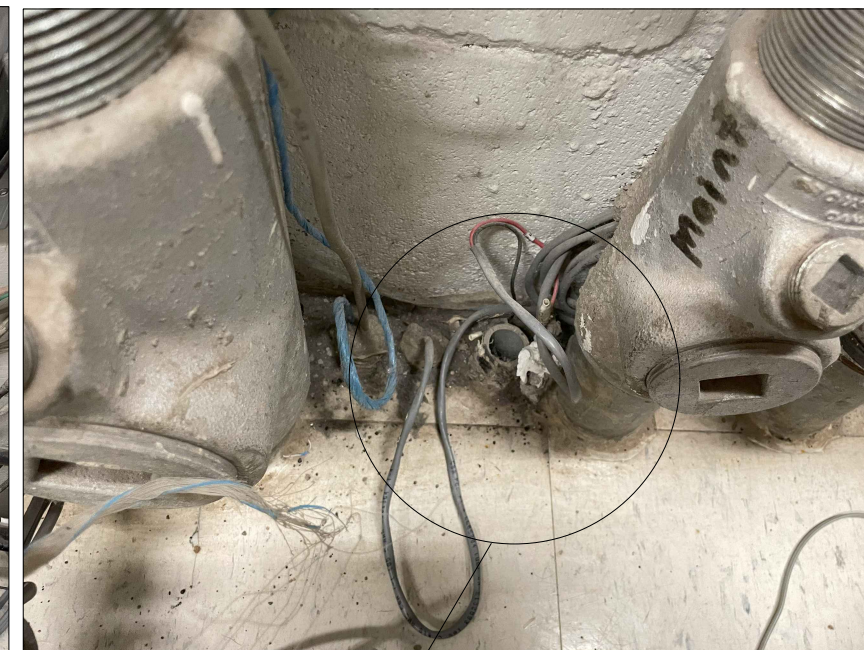
4 ADMINISTRATION BUILDING LAYOUT
E3.0 SCALE: N.T.S.

DRAWING NOTES

- ① PROVIDE NEW EXIST SIGNS IN THE BLOWER ROOM, WIRING/CONDUITS, AND ALL ASSOCIATED ELECTRICAL CONNECTIONS FOR THE INSTALLATION OF THESE DEVICES.
- ② PROVIDE NEW EXIST SIGNS IN THE BLOWER ROOM, WIRING/CONDUITS, AND ALL ASSOCIATED ELECTRICAL CONNECTIONS FOR THE INSTALLATION OF THESE DEVICES.
- ③ PROVIDE NEW EXIST SIGNS IN THE ELECTRICAL ROOM, WIRING/CONDUITS, AND ALL ASSOCIATED ELECTRICAL CONNECTIONS FOR THE INSTALLATION OF THESE DEVICES.
- ④ PROVIDE NEW BATTERY UNIT IN THE ELECTRICAL ROOM, WIRING/CONDUITS, AND ALL ASSOCIATED ELECTRICAL CONNECTIONS FOR BRANCH CIRCUIT OF THE BATTERY TO THE EXISTING ELECTRICAL PANEL.
- ⑤ VERIFY AND CONFORM AVAILABLE SPACE IN THE ELECTRICAL PANEL, LPA TO PROVIDE NEW CIRCUIT BREAKER/WIRING/CONDUIT, AND ALL ASSOCIATED ELECTRICAL CONNECTIONS TO THE NEW BATTERY UNIT. VERIFY AND CONFORM AVAILABLE SPACE IN THE ELECTRICAL PANEL, LPA TO PROVIDE NEW CIRCUIT BREAKER IS ACCEPTABLE FOR THE NEW BATTERY CIRCUIT IF THERE IS NO SPACE AVAILABLE.
- ⑥ VERIFY AND CONFORM AVAILABLE SPACE IN THE ELECTRICAL PANEL, LPA TO PROVIDE NEW CIRCUIT BREAKER/WIRING/CONDUIT, AND ALL ASSOCIATED ELECTRICAL CONNECTIONS TO CONNECT THE NEW EXIST SIGNS TO THE EXISTING ELECTRICAL PANEL, LPA.
- ⑦ VERIFY AND CONFORM AVAILABLE SPACE IN THE ELECTRICAL PANEL, LPA TO PROVIDE NEW CIRCUIT BREAKER IS ACCEPTABLE FOR THE NEW BATTERY CIRCUIT IF THERE IS NO SPACE AVAILABLE.



CONFIRM IF AVAILABLE EXISTING UNDERGROUND
CONDUITS LOCATED IN THE ELECTRICAL ROOM
(ADMINISTRATION BUILDING) ARE SUITABLE FOR WORK.



CLOSE-UP OF EXISTING CONDUIT. CONFIRM IF IT IS
SUITABLE FOR WORK.

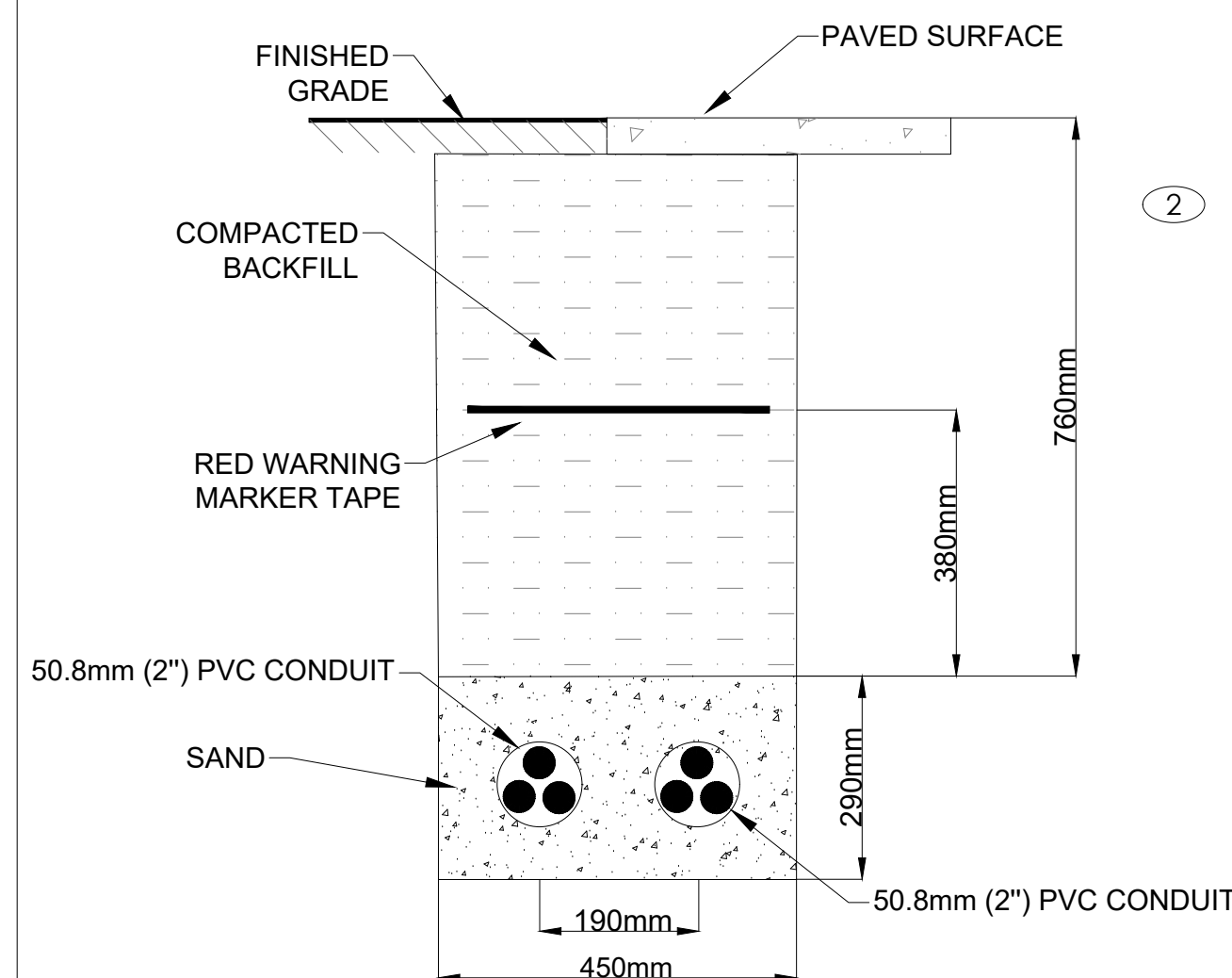


EXISTING CONDUITS.
CONFIRM IF SUITABLE FOR WORK.



NEW WIRING/CONDUITS TO EXISTING
FACP SHALL BE ROUTED THROUGH THE
CEILING.

5 PICTURES OF CONDUITS IN THE ADMIN. BUILDING ELECTRICAL ROOM
E3.0 SCALE: N.T.S.



TRENCH NOTES

- ① PROVIDE 25 MPA CONCRETE ENVELOP.
- ② 15M CONTINUOUS REINFORCING BARS.
- ③ MOLDED PLASTIC INTERLOCKING DUCT SPACERS @ 1500MM INTERVALS ALONG ENTIRE LENGTH OF DUCTBANK.
- ④ 1200MM LONG - 10M REINFORCING BARS REQUIRED AS DOWELLING BETWEEN NON-CONTINUOUS POURS - 4 REQUIRED.

6 TRENCH DETAILS
E3.0 SCALE: N.T.S.