

LIGHTING FIXTURE SCHEDULE									
INDEX	MANUFACTURER	DESCRIPTION	PART NUMBER	LUMENS	VOLTAGE	LOAD	QUANTITY	MOUNTING AND HEIGHT	DESCRIPTION
1	LITHONIA LIGHTING	CPX 2'x4' LED PANEL	CPX 2X4 4000LM 80CRI 40K SWL MIN10 MVOLT	4936	120-277V	36.7W	34	CEILING MOUNT	
2	LITHONIA LIGHTING	CPX 2'x2' LED PANEL	CPX 2X2 3200LM 80CRI 40K SWL MIN10 MVOLT	3734	120-277V	30.1W	5	CEILING MOUNT	ORDER ONE FIXTURE WITH DGA22 DRYWALL GRID ADAPTER.
3	LITHONIA LIGHTING	CLX LED LINEAR	CLX L48 4000LM SEF RDL MVOLT GZ10 40K 80CRI WH	4000	120-277V	27W	14	CEILING MOUNT	
4	LITHONIA LIGHTING	CPX 2'x2' LED PANEL WITH OCCUPANCY SENSOR	CPX 2X2 3200LM 80CRI 40K SWL MIN10 MVOLT PJR	3734	120-277V	30.1W	18	CEILING MOUNT	
5	LITHONIA LIGHTING	CLX LED LINEAR	CLX L24 2000LM SEF RDL MVOLT GZ10 35K 80CRI WH	2000	120-277V	18.4W	4	CEILING MOUNT	
6	LITHONIA LIGHTING	TCC COMMERCIAL STEEL RUNNING MAN COMBO	TCC RM 750L HO	350	120-347V	5W	11	SURFACE MOUNT	
7	LITHONIA LIGHTING	6" WAFER LED RECESSED DOWNLIGHT	WF6 LED 30K MW	800	120V	12.6W	5	RECESSSED	
8	LITHONIA LIGHTING	SQUARE DUAL HEAD ERE LED REMOTE	ERE W T SQ	750	3.6-12VDC	2W	8		TO BE POWERED FROM FIXTURE #6
NOTE : ALTERNATE EQUIPMENT OF EQUIVALENT PERFORMANCE IS ACCEPTABLE.									

WATER HEATER SCHEDULE

UNIT#	DESCRIPTION	MAKE	MODEL #	CAPACITY	TYPE	VOLTAGE	INPUT (kW)	MCA	MOCP	HEIGHT	DIAMETER	SHIPPING WEIGHT	WEIGHT W/ WATER	REMARKS
HWT-1	ELECTRIC WATER HEATER	A.O.SMITH	DEN-80	80 USG	ELECTRIC	208/1/60	3 kW	14.4	20	59-3/8"	24"	211lbs	~667 lbs	NON SIMULTANEOUS OPERATION. INSTALL AS PER MANUFACTURER'S INSTRUCTIONS.
NOTE: ALTERNATE EQUIPMENT OF EQUIVALENT PERFORMANCE IS ACCEPTABLE.														

EXHAUST FAN SCHEDULE

FAN #	DESCRIPTION	MAKE	MODEL	AIR FLOW (CFM)	FAN MOTOR KW (HP)	STATIC PRESSURE	FAN RPM	VOLTAGE	MCA (AMPS)	MOCP (AMPS)	UNIT WEIGHT kg(lbs)	REMARKS
EF-1	LUNCH ROOM CEILING EXHAUST FAN	GREENHECK	SP-A250	250	-	0.25 in wc	1000	115/60/1	-	15	10.9(24)	INSTALL PER MANUFACTURERS INSTALLATION INSTRUCTIONS.
EF-2	NEW WASHROOMS INLINE EXHAUST FAN	GREENHECK	SQ-95	420	0.0497 (0.0667)	0.31 in wc	1,300	115/60/1	-	15	24.0(53)	CONTROLLED BY TIMER. SET TO RUN DURING OCCUPIED HOURS. INSTALL PER MANUFACTURERS INSTALLATION INSTRUCTIONS.
EF-3	NEW SHOWER INLINE EXHAUST FAN	GREENHECK	SQ-90	280	0.0298 (0.04)	0.33 in wc	1,300	115/60/1	-	15	22.7(50)	INTERLOCK w/ SHOWER LIGHTS. INSTALL PER MANUFACTURERS INSTALLATION INSTRUCTIONS.
REMARKS: ALTERNATE EQUIPMENT OF EQUIVALENT PERFORMANCE IS ACCEPTABLE.												

HVAC EQUIPMENT SCHEDULE

TAG ID	DESCRIPTION	MAKE	MODEL	AIR FLOW (CFM)	OUTDOOR AIR (CFM)	HEATING INPUT (MBH)	HEATING OUTPUT (MBH)	COOLING CAPACITY (MBH)	VOLTAGE	MCA (AMPS)	MOCP (AMPS)	UNIT WEIGHT kg (lbs)	REMARKS
RTU-1	NEW 4 TON PACKAGED UNIT	CARRIER	48FCEA05E2A1-0B0F0	1900	367	110	88	49.55	575/60/3	9	15	~292.1 (644)	DOWNFLOW, c/w NON-FUSED DISCONNECT, ELECTROMECHANICAL CONTROLS, ECONOMIZER, CO2 SENSOR, AND 18" HIGH ROOF CURB. INSTALL PER MANUFACTURERS INSTALLATION INSTRUCTIONS.
SS-1.0	NEW 1 TON DUCTLESS SPLIT SYSTEM - OUTDOOR UNIT	MITSUBISHI	SUZ-KA12NAH2	-	-	-	-	-	120/1/60	9	20	36.7 (81)	INSTALL PER MANUFACTURER INSTALLATION INSTRUCTIONS.
SS-1.1	NEW 1 TON DUCTED SPLIT SYSTEM -INDOOR UNIT	MITSUBISHI	SEZ-KD12NA4R1	222-388	-	-	15.0	12.0	-	1.0	15	22.7 (50)	POWERED BY SS-1.0. INSTALL PER MANUFACTURER INSTALLATION INSTRUCTIONS.
HRV-1	HEAT RECOVERY VENTILATOR	LIFEBREATH	METRO 120D	120	120	-	-	-	208/1/60	1.4	15	16.8 (36)	INTERLOCK OPERATION WITH SS-1.1. INSTALL PER MANUFACTURER INSTALLATION INSTRUCTIONS.
REMARKS: ALTERNATE EQUIPMENT OF EQUAL PERFORMANCE IS ACCEPTABLE.													

ELECTRIC HEATER SCHEDULE

UNIT#	DESCRIPTION	MAKE	MODEL #	TYPE	HEATING OUTPUT	VOLTAGE	MCA	MOCP	WEIGHT Kg (lbs)	REMARKS
EFF-1	ELECTRIC FAN FORCED HEATER	OUELLET	ODSR02008	ELECTRIC	2000 WATTS	208/60/1	9.6A	15A	14.1 (31)	RECESSED IN CEILING, c/w BUILT IN TAMPERPROOF THERMOSTAT, BUILT IN SWITCH. INSTALL AS PER MANUFACTURER'S INSTRUCTIONS.
NOTE: ALTERNATE EQUIPMENT OF EQUIVALENT PERFORMANCE IS ACCEPTABLE.										

WATER SOFTENER SCHEDULE

TAG ID	DESCRIPTION	MAKE	MODEL	RATED SERVICE FLOW RATE (GPM)	VOLTAGE	MCA (AMPS)	MOCP (AMPS)	RESIN VOLUME (FT^3)	UNIT WEIGHT kg (lbs)	REMARKS
WS-1	NEW WATER SOFTENER	RHEEM	RH42	9.9	120/1/60	-	15	1.2	-	INSTALL AS PER MANUFACTURER'S INSTRUCTIONS.
NOTE: ALTERNATE EQUIPMENT OF EQUIVALENT PERFORMANCE IS ACCEPTABLE.										

LIGHTNG	
SYMBOLS	DESCRIPTION
	LIGHTING FIXTURE, DRAWN TO SCALE, SURFACE, RECESSED, SUSPENDED OR GRID - T MOUNT. REFER TO LIGHTING SCHEDULE
	LIGHTING FIXTURE, DRAWN TO SCALE, SURFACE, RECESSED, SUSPENDED OR PENDANT DOWN LIGHT. REFER TO LIGHTING SCHEDULE
	LIGHTING FIXTURE, WALL AND COLUMN MOUNTED SCONCE LIGHT.
	LIGHTING FIXTURE. FLOOD OR SPOT LIGHT. MOUNTED AS INDICATED. REFER TO LIGHTING SCHEDULE
	LIGHTING FIXTURE. EXTERIOR WALL PACK.
	EMERGENCY LIGHT WITH BATTERY UNIT. REFER TO LIGHTING SCHEDULE. MOUNT AS INDICATED.
	SINGLE HEAD REMOTE EMERGENCY LIGHT.
	DUAL HEAD REMOTE EMERGENCY LIGHT.
	EXIT SIGN WITH BATTERY UNIT. ARROW DENOTES DIRECTION OF EGRESS. MOUNT AS INDICATED.
	EXIT SIGN / EMERGENCY COMBO WITH BATTERY UNIT. ARROW DENOTES DIRECTION OF EGRESS. MOUNT AS INDICATED.
	EXIT SIGN. ARROW DENOTES DIRECTION OF EGRESS. MOUNT AS INDICATED.
	LIGHT FIXTURES. POLE MOUNT IN CONFIGURATION SHOWN. REFER TO LIGHTING SCHEDULE FOR MOUNTING AND POLE DETAILS.
	ALL SHADED FIXTURE ARE FOR NIGHT LIGHTING AND ARE ALWAYS ON.
	LIGHT FIXTURE ANNOTATION : P - PANEL BOARD NAME, #-BRANCH CIRCUIT, 1- FIXTURE NUMBER FROM LIGHTING SCHEDULE, FIXTURE NUMBER 2 IN THE SCHEDULE AND IS POWERED FROM PANEL LP CIRCUIT 7. EXAMPLE : LP-72

ABBREVIATIONS

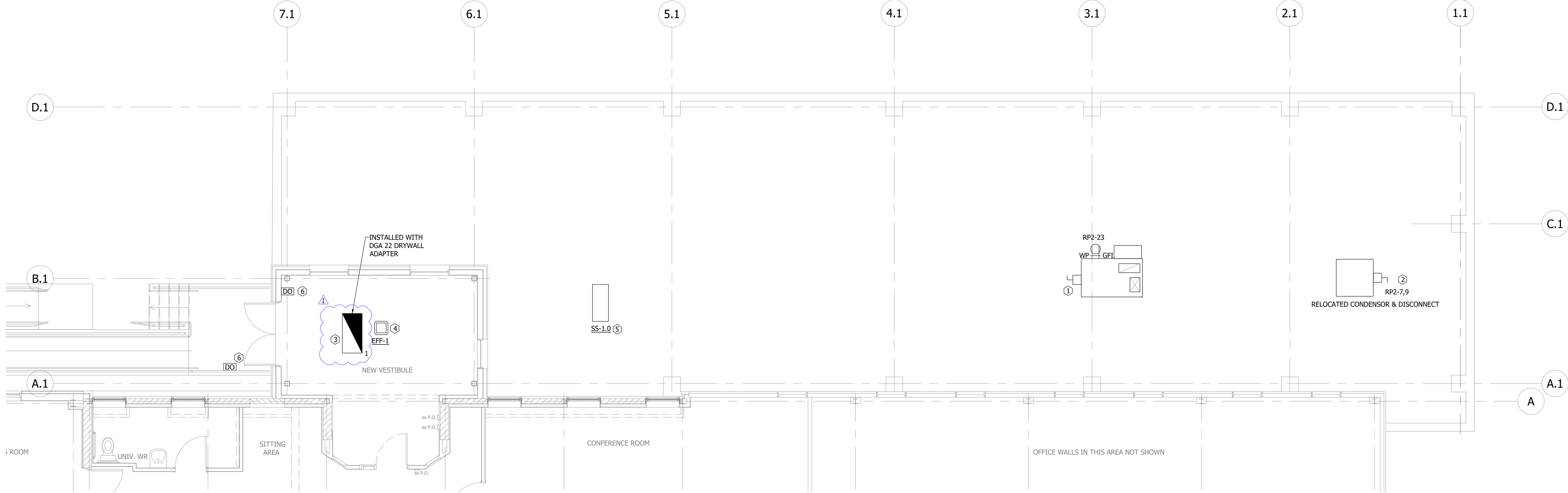
A	AMPERE
AFF	ABOVE FINISHED FLOOR
AFG	ABOVE FINISHED GRADE
AL	ALUMINIUM
CU	COPPER
AWG	AMERICAN WIRE GAUGE
GFI	GROUND FAULT INTERRUPTER
OS	OCCUPANCY SENSOR
DM	DIMMING
WP	WEATHER PROOF
HP	HORSE POWER
TX	TRANSFORMER
ETR	EXISTING TO REMAIN
TBR	TO BE REMOVED
PS	PHOTO SENSOR

LEGENDS

SYMBOLS	DESCRIPTION
---	WIRE CONNECTIONS
---	CONDUIT OR WIRE RUN AS INDICATED
—o/h—	OVERHEAD WIRES
—u/g—	UNDERGROUND CABLE AND CONDUIT
\$	SWITCH
\$ ₃	3 - WAY SWITCH
\$ ₄	4 - WAY SWITCH
	WATER HEATER
	HEATER. (XXX IS THE SCHEDULE TAG ID, SEE SCHEDULE FOR DETAILS.)
	JUNCTION BOX
	IN - CEILING JUNCTION BOX
	IN - FLOOR JUNCTION BOX
	PULL BOX
	ELECTRIC DOOR OPERATOR
	EMERGENCY CALL SYSTEM
	DISCONNECT
	FUSED DISCONNECT. X INDICATE FUSE SIGN.
	SINGLE PHASE MOTOR. X (IF SHOWN) INDICATES THE HORSE POWER OF THE MOTOR.
	THREE PHASE MOTOR (IF SHOWN) INDICATES THE HORSE POWER OF THE MOTOR
P - #, #, #	CIRCUIT ANNOTATION. P- PANEL BOARD NAME, # - INDICATES THE CIRCUIT NUMBER. EX Sub A - 2,4,6 IS A THREE PHASE MOTOR POWERED FROM PANEL Sub A CIRCUIT 2,4 AND 6
	CAMERA
	EMERGENCY STOP
	ANTENNA
	DETECTOR

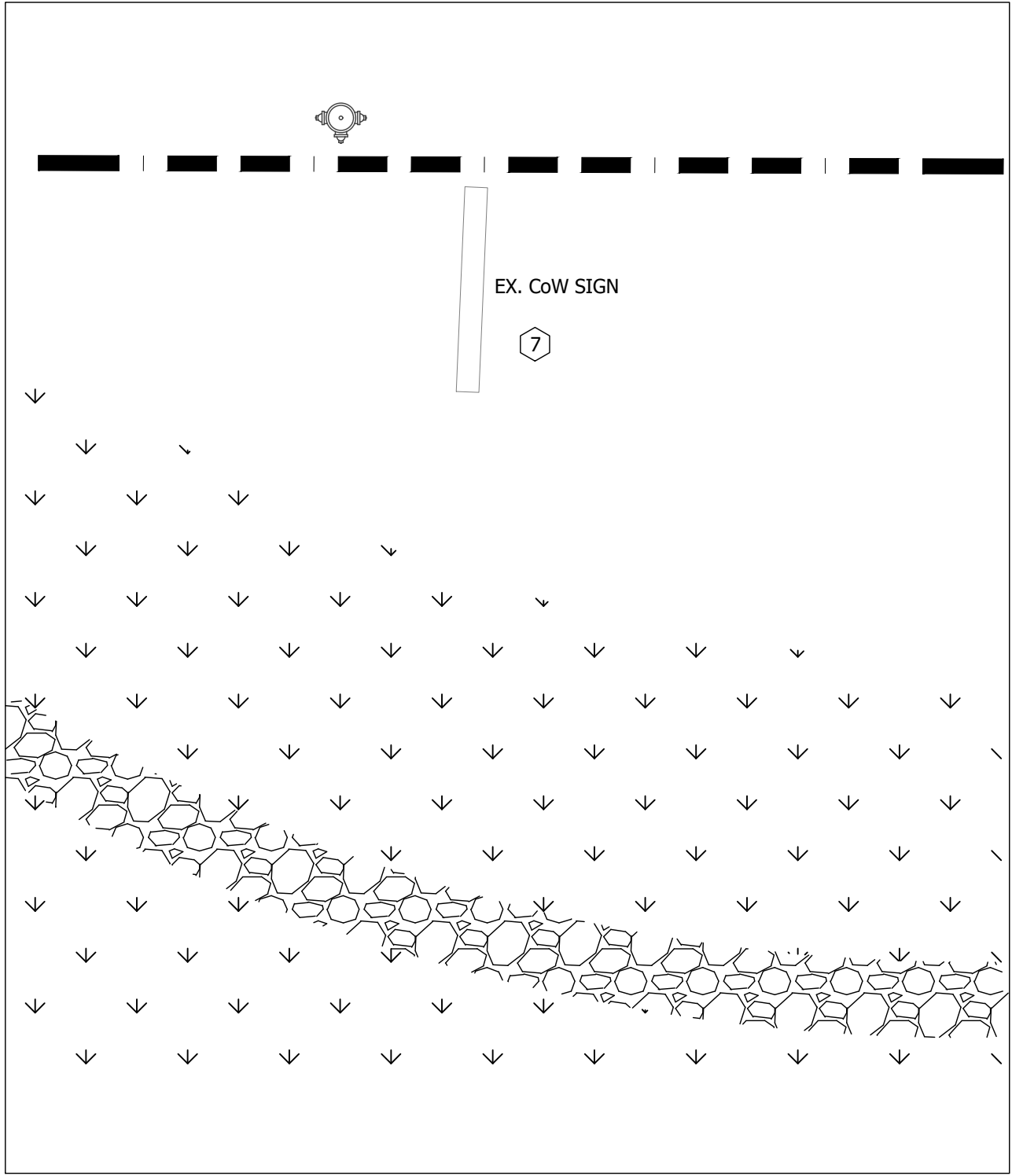
RECEPTACLES / OUTLET

SYMBOLS	DESCRIPTION
	SINGLE RECEPTACLE (CAS 5 - 15R)
	DUPLEX RECEPTACLE (CAS 5 - 15R)
	FOURPLEX RECEPTACLE (CAS 5 - 15R)
	120V SPLIT - WIRED DUPLEX RECEPTACLE (CAS5 - 15R)
	VERTICAL LINE THROUGH PRONGS OF ANY RECEPTACLE INDICATE A 20A (CAS 5 - 20R) RECEPTACLE
	DIRECT CONNECTION OR SPECIAL OUTLET AS NOTED
	BOX AROUND ANY RECEPTACLE INDICATES IN-FLOOR RECEPTACLE
	CIRCLE AROUND ANY RECEPTACLE INDICATES IN-CEILING RECEPTACLE
	DATA OUTLET
	RECEPTACLE ANNOTATIONS : P - PANEL BOARD NAME, # - BRANCH CIRCUIT, XX - OPTIONAL FEATURE RATING. EX. SYMBOL SHOWN IS POWERED FROM PANEL SUB C CIRCUIT 15 AND IS A GROUND FAULT CIRCUIT INTERRUPTER RECEPTACLE.




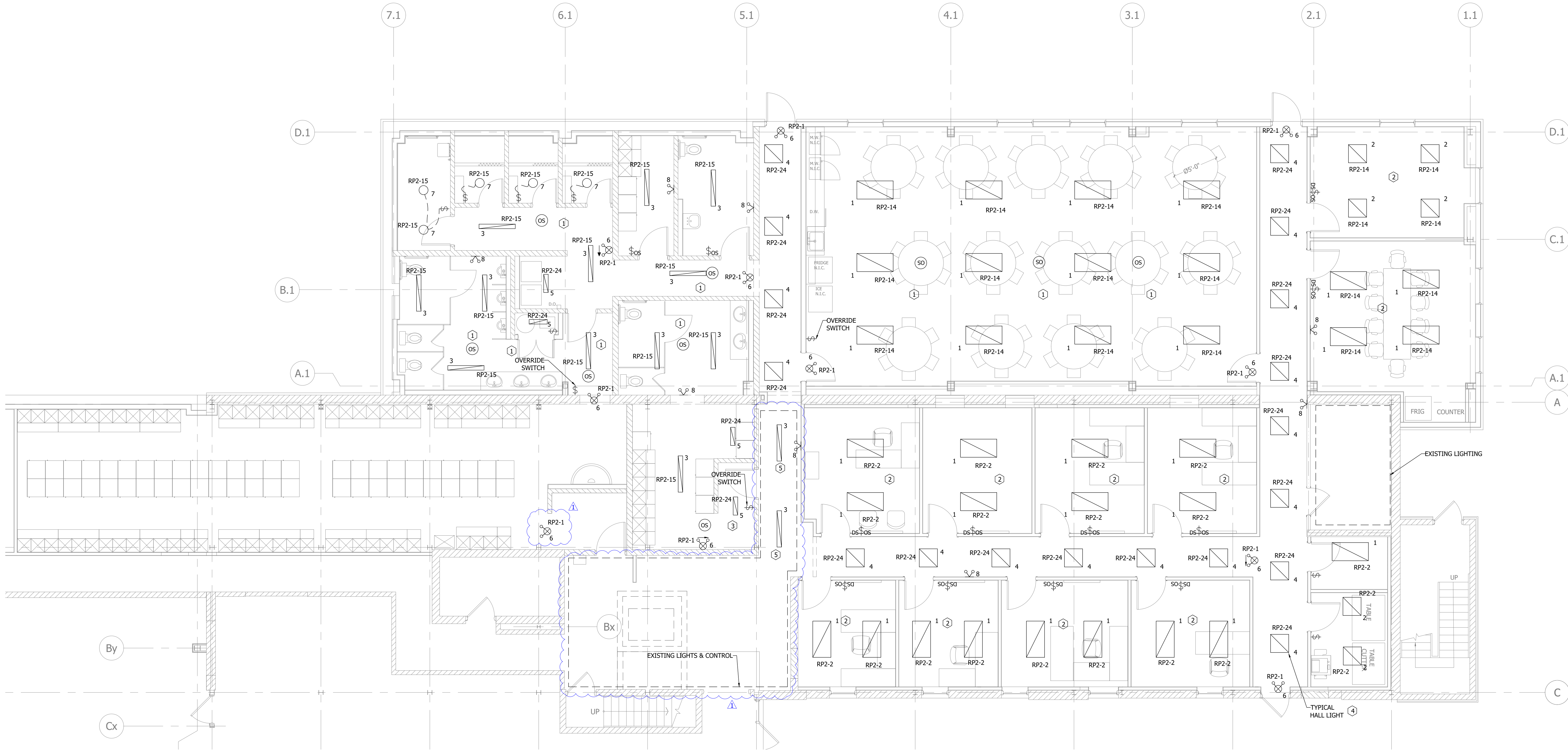
NEW ROOF / VESTIBULE POWER LAYOUT
SCALE : 3/16" = 1' 0"

- KEY NOTES (INDICATED WITH HEXAGONS) :
- ① NEW ROOF TOP UNIT IS TO BE POWERED FROM THE 15A, THREE POLE BREAKER WITHIN NEW PANEL D. UNIT IS TO BE POWERED THROUGH AN APPROPRIATELY RATED LOCAL DISCONNECT. CONTRACTOR IS TO PROVIDE DISCONNECT IF REQUIRED.
 - ② RELOCATED CONDENSER IS TO BE POWERED FROM THE 40A, TWO POLE BREAKER WITHIN EXISTING PANEL RP2. CONDENSOR IS TO BE POWERED THROUGH RELOCATED DISCONNECT. CONTRACTOR IS TO REWORK ELECTRICAL AS REQUIRED.
 - ③ CONTRACTOR IS TO REWORK ELECTRICAL TO CONNECT VESTIBULE LIGHT TO EXISTING LIGHTING CIRCUIT. CIRCUIT IS TO BE DETERMINED ON-SITE. FIXTURE IS A SECURITY LIGHT AND IS TO BE ALWAYS ON. LIGHT IS TO BE INSTALLED WITH A DGA22 DRYWALL ADAPTER.
 - ④ VESTIBULE HEATER IS TO BE POWERED FROM 15A, TWO POLE BREAKER WITHIN NEW PANEL E. TO BE POWERED FROM 15A, 2 POLE BREAKER ON NEW PANEL E.
 - ⑤ CONTRACTOR IS TO REWORK ELECTRICAL SO THAT DOOR OPERATORS ARE POWERED FROM AN EXISTING DOOR OPERATOR CIRCUIT.
 - ⑥ EXTERIOR SIGN IS TO BE POWERED FROM EXISTING SIGN LIGHTING CIRCUIT THAT WAS DETERMINED DURING DEMOLITION. SEE SHEET ED 2 KEY NOTE 9. CONTRACTOR IS TO RUN CABLE AND CONDUIT TO EXTERIOR SIGN. BEST ROUTE FOR CONDUIT IS TO BE DETERMINED ON-SITE. CONTRACTOR IS TO MAKE GOOD ALL EXTERIOR WALL PENETRATIONS.
 - ⑦



NEW SIGN DETAIL
SCALE : NTS

CLIENT CITY OF WOODSTOCK ENGINEERING BLDG 944 JAMES ST	PROJECT ADDITION AND RENOVATION	DRAWING NEW ROOF POWER & VESTIBULE POWER, LIGHTING LAYOUT	 SPH ENGINEERING INC. REAL WORLD ENGINEERING SOLUTIONS TEL: 519-539-5700 FAX: 519-539-5775	485037 SWEABURG ROAD WOODSTOCK, ONTARIO N4S 7V6	This drawing is the property of SPH Engineering Inc. and is not to be copied or distributed for any reason or by any means without the permission of the owner.	<div>STAMP</div> <div>PRELIMINARY</div>	<div>NORTH ARROW</div>	ISSUED FOR		STAMP		NORTH ARROW					
								<input type="checkbox"/> PRELIMINARY		<input type="checkbox"/> 90% CLIENT TENDER REVIEW		<input type="checkbox"/> SITE PLAN APPROVAL					
								<input type="checkbox"/> BUILDING PERMIT		<input type="checkbox"/> TENDER ADDENDUM		<input type="checkbox"/> CONSTRUCTION					
								DATE 2024-08-09		DATE 2024-08-09		DATE 2024-08-09					
REV. 1		BY RO		DESCRIPTION		DATE		DRAWN		CHECKED		PROJECT NUMBER					
2024-08-09		AS NOTED		21367MainE8		2024-08-09		RO		JT		21367					
DATE		SCALE		FILE NAME		SHEET SIZE		DRAWING		24x36		E1.1					



LIGHTING LAYOUT
SCALE: 1/8"=1'-0"

GENERAL NOTES:

- CONTRACTOR IS TO COORDINATE WIRE SIZES RUNNING TO LIGHT FIXTURES SO AS TO ENSURE THAT VOLTAGE DROP DOES NOT EXCEED 3% OR MANUFACTURERS RECOMMENDATION, WHICHEVER IS LESS.
- FINAL FIXTURE LOCATION MAY BE ADJUSTED TO ACCOMMODATE ARCHITECTURE. COORDINATE WITH PROPERTY OWNER.
- EMERGENCY LIGHTS ARE TO BE CONNECTED TO CIRCUIT SHOWN. THEY ARE TO BE CONNECTED UPSTREAM FROM ANY LIGHTING CONTROL SO THAT THEY RECEIVE CONSTANT POWER.
- REMOTE LIGHTS ARE TO BE POWERED FROM EMERGENCY LIGHT OR EXIT/EMERGENCY LIGHT COMBO UNITS WITH BATTERY PACKS. CONTRACTOR IS TO ENSURE THAT REMOTES POWERED BY AN INDIVIDUAL EMERGENCY OR EXIT/EMERGENCY UNIT DOES NOT EXCEED MANUFACTURER'S SPECIFICATIONS.
- EXIT LIGHT EMERGENCY COMBO UNITS ARE TO BE POWERED FROM A DEDICATED CIRCUIT. CIRCUIT BREAKER HANDLE LOCK-OFF DEVICES ARE TO BE PROVIDED FOR BREAKERS SERVING EXIT LIGHTING.
- COORDINATE AND CONFIRM LIGHTING ZONES AND CONTROLS WITH PROPERTY OWNER PRIOR TO BEGINNING WORK.
- ALL ELECTRICAL DEVICES ARE TO BE INSTALLED AS PER MANUFACTURER'S SPECIFICATIONS.
- ELECTRICAL CONTRACTOR IS RESPONSIBLE TO PROVIDE ALL CONTACTORS, SENSORS AND SWITCHES AND ALL LINE VOLTAGE WIRING TO DEVICES.

KEY NOTES (INDICATED WITH HEXAGONS)

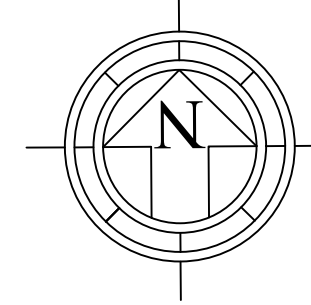
- LUNCHROOM, MEN'S WASHROOM, WOMEN'S WASHROOM AND WOMEN'S CHANGEROOM LIGHTS ARE TO BE CONTROLLED BY MOTION SENSORS. CONTRACTOR IS TO VERIFY QUANTITY AND LOCATION OF SENSORS PROVIDES A MINIMUM 25% COVERAGE OVERLAP. ADJUST QUANTITY AND LOCATION OF SENSORS AS REQUIRED. CONTRACTOR IS TO PROVIDE A LIGHT SWITCH FOR MANUAL OVERRIDE.
- LIGHTS WITHIN THE OFFICES AND BOARD ROOM ARE TO BE CONTROLLED BY A WALL MOUNT MOTION SENSOR DIMMER SWITCH.
- REWORK EXISTING ELECTRICAL TO CONNECT LIGHT TO EXISTING LIGHTING CIRCUIT AND CONTROL.
- HALL LIGHTS ARE TO BE CONTROLLED BY MANUFACTURER'S INSTALLED OCCUPANCY SENSOR. LIGHT IS TO TURN ON WHEN OCCUPANCY IS DETECTED AND IS TO REMAIN ON FOR 10 MINUTES AFTER OCCUPANCY IS NO LONGER DETECTED.
- CONNECT SUSPENDED HALL LIGHTS TO EXISTING CIRCUITS AND CONTROLS. CONTRACTOR IS TO CONFIRM ADDITIONAL LOAD DOES NOT EXCEED 80% OF OVERCURRENT PROTECTION DEVICE.

ISSUED FOR

- ☐ PRELIMINARY
☐ 90% CLIENT TENDER REVIEW
☐ SITE PLAN APPROVAL
☐ BUILDING PERMIT
☒ TENDER ADDENDUM
☐ CONSTRUCTION
DATE 2024-08-09

STAMP

NORTH ARROW



REV.	BY	DESCRIPTION	DATE
1	RO	LIGHTING FIXTURE ADDED OR REMOVED AND UPDATE NOTES	2024-08-07

DRAWN	RO	CHECKED	JT	PROJECT NUMBER	21367	SHEET SIZE	24x36
DATE	2024-08-09	SCALE	AS NOTED	FILE NAME	21367MainE8	DRAWING	E2.0

CLIENT
CITY OF WOODSTOCK
ENGINEERING BLDG
944 JAMES ST

PROJECT
ADDITION
AND
RENOVATION

DRAWING
LIGHTING LAYOUT



SPH ENGINEERING INC.
REAL WORLD ENGINEERING SOLUTIONS
TEL: 519-539-5700 FAX: 519-539-5775

485037 SWEABURG ROAD
WOODSTOCK, ONTARIO
N4S 7V6

This drawing is the property of
SPH Engineering Inc. and is not to
be copied or distributed for any
reason or by any means without
the permission of the owner.

PRELIMINARY