

DESIGNATED SUBSTANCE SURVEY REPORT



**Town Hall
1225 Trafalgar Road
Oakville, Ontario**

**Presented to:
Corporation of the Town of Oakville
1225 Trafalgar Road
Oakville, Ontario
L6H 0H3**

Attention: Mr. Gary Robinson

December, 2014

Maple Project No. 14478-09

EXECUTIVE SUMMARY

Maple Environmental Inc. ('Maple') was retained by The Town of Oakville to perform a hazardous materials survey for Designated Substances as well as mould and PCBs in the Town Hall located at 1225 Trafalgar Road, Oakville, Ontario (the 'Site').

The findings of the current assessment are summarized below. Please refer to the main body of this report for details on all materials.

Asbestos

Asbestos-containing materials (ACM) identified within the building at the time of the assessment are as follows:

- Mechanical Insulation (Parging Cement)
- Sprayed Fireproofing
- Transite

Please refer to the Asbestos Inventory in Appendix IV to view locations and quantities of ACM observed within the building at the time of the assessment.

Lead

Based on the Laboratory Analysis Report for lead samples and observations made during the fieldwork, no lead-containing paints were identified in the form of beige, dark beige and yellow.

It should also be noted that lead may be present in wiring connectors, electric cable sheathing, solder joints on copper piping, ceramic glazes, lead sheeting, masonry mortar, and as sub-surface layers to the most recent paint layers currently applied, where present at the Site.

Mercury

Mercury vapour is present in all fluorescent lighting tubes.

Mould

One (1) square foot of visible mould was observed within the 2nd Floor Corridor in front of the Tax Office window.

Water staining was also observed within the building. Approximately ten (10) SF within the 2nd Floor Corridor near the Legal department and approximately 20 SF within the 2nd Floor Corridor where it crosses over the South Atrium.

Silica

Free crystalline silica, present as common construction sand, is present in all concrete and masonry products where present within the building.

PCBs

The fluorescent lamp fixtures observed all contained T8 fluorescent light tubes. T8 fixtures have electronic ballast and are not considered as PCB-containing.

Recommendations

Asbestos

Using Type 2 Asbestos procedures repair two (2) parging cement fittings within the Mechanical Room.

All remaining asbestos-containing materials were observed to be in GOOD condition.

Ontario Regulation 278/05 also requires an annual re-assessment of all ACM.

Lead

No immediate recommendations are warranted

Paints (and other materials) found with a lead concentration should follow Type I lead abatement procedures, at a minimum, provided that; a) work does not include fume producing activities such as welding, burning, torching, etc., b) is not removed or demolished by scraping, sanding or striking c) airborne lead concentration are kept below 0.05 mg/m³ and d) general dust suppression and worker protection procedures are utilized including; minimum N95 respirator, protective clothing, and proper worker hygiene. However, it may be prudent that air monitoring be conducted during the disturbance of lead-containing materials to ensure airborne levels of lead do not exceed the acceptable limit.

Mercury

No immediate recommendations are warranted. Follow appropriate procedures if disturbed or removed.

Silica

No immediate recommendations are warranted. Follow appropriate procedures if disturbed or removed.

Mould

Using Level 1 mould remediation procedures remove mould impacted and water stained surfaces in the above mentioned locations.

PCBs

All ballasts not clearly marked as "non-PCB" on the label should be separated, handled and disposed of as PCB-containing or inspected by competent persons to ascertain PCB content.

TABLE OF CONTENTS

1.0	INTRODUCTION	1
2.0	APPLICABLE ONTARIO REGULATIONS	1
	DESIGNATED SUBSTANCES AND OTHER HAZARDOUS MATERIALS	1
	ONTARIO REGULATION 278/05 (ASBESTOS)	2
	ONTARIO REGULATION 347.....	2
3.0	SURVEY SCOPE AND METHODOLOGY	3
	ASBESTOS-CONTAINING BUILDING MATERIALS (ACM).....	3
	LEAD	5
	MERCURY	5
	MOULD	5
	POLYCHLORINATED BIPHENYLS.....	6
	OTHER MATERIALS	6
	LIMITATIONS AND OMISSIONS FROM SCOPE	6
4.0	INVENTORY FINDINGS	7
	ASBESTOS	7
	LEAD	17
	MERCURY	18
	MOULD	18
	SILICA	18
	POLYCHLORINATED BIPHENYLS.....	18
	ISOCYANATES	19
	VINYL CHLORIDE MONOMER.....	19
	BENZENE.....	19
	ACRYLONITRILE	19
	COKE OVEN EMISSIONS.....	19
	ARSENIC	19
	ETHYLENE OXIDE.....	19
5.0	RECOMMENDATIONS	19
	ASBESTOS.....	19
	LEAD	20
	MERCURY	20
	SILICA	20
	POLYCHLORINATED BIPHENYLS.....	20
6.0	LIMITATIONS	20

APPENDICES

APPENDIX I	LABORATORY ANALYSIS REPORTS – ASBESTOS
APPENDIX II	LABORATORY ANALYSIS REPORTS – LEAD
APPENDIX III	DRAWINGS
APPENDIX IV	ASBESTOS INVENTORY

1.0 INTRODUCTION

Maple Environmental Inc. ('Maple') was retained by The Town of Oakville to perform a survey for Designated Substances as well as polychlorinated biphenyls (PCBs) and mould within the Town Hall located at 1225 Trafalgar Road, Oakville, Ontario (the 'Site').

Section 30 of the Ontario Occupational Health and Safety Act requires that the following Designated Substances be included in a Designated Substance survey:

Asbestos

Lead

Mercury

Silica

Isocyanates

Vinyl Chloride Monomer

Benzene

Acrylonitrile

Coke Oven Emissions

Arsenic

Ethylene Oxide

Additional detailed information with respect to asbestos was collected at the time of the survey to ensure compliance with Ontario Regulation 278/05.

It should be noted that information from previous assessments performed in the building were used in the preparation of this report. Information from previous assessments and from the current assessment have been consolidated into this report.

The assessment was performed by Mr. Matthew Gibbs of Maple on November 6, 2014.

2.0 APPLICABLE ONTARIO REGULATIONS

Applicable Ontario Regulations for each of the materials included in the investigation are briefly described below.

Designated Substances and Other Hazardous Materials

Section 30 of the Occupational Health and Safety Act requires building owners or their agents (architects, general contractors, etc.) to prepare or have prepared a Designated Substance report for specified potentially hazardous materials possibly present in a facility. The owner must ensure that a prospective constructor has received a Designated Substance report before entering into a binding contract with the contractor. The owner is liable to the contractor for damages and costs arising from unreported materials (of which the owner should reasonably have been aware), and could also be subject to orders and fines from the Ministry of Labour.

In addition to the requirements under the Occupational Health and Safety Act, Section 6 of the Ministry of Labour Regulations for Construction Projects requires the contractor, when submitting the Notice of Project form, report any Designated Substances likely to be used, handled or disturbed during the project.

There are no specific Ministry of Labour regulations for control of the other Designated Substances on construction projects. However, the Ministry of Labour actively enforces the general duty clause of the Health and Safety Act which protects workers and provides guidance on exposure monitoring, permissible exposure levels, medical monitoring, etc. for all Designated Substances.

Although Regulations exist for many of the Designated Substances, they apply to industry settings using Designated Substances in manufacturing processes, and do not apply to general property management, renovation or maintenance of buildings.

Polychlorinated Biphenyls ("PCBs") and mould were also included in the investigation, which are not specifically named as Designated Substances. No specific regulations are attached to these materials, but are generally governed by the due diligence section of the Health and Safety Act for employers to protect their workers.

Ontario Regulation 278/05 (Asbestos)

Ontario Regulation 278/05 applies to buildings with regards to maintenance, renovations or demolition work where asbestos-containing materials (ACM) is present and may be disturbed. The Regulation requires that a detailed asbestos inventory be performed in all buildings where friable and non-friable asbestos materials are present. The inventory must be available at the work place and must identify the type of asbestos, and location of asbestos on a room-by-room basis. The following report meets or exceeds the requirements for an asbestos survey under Ontario Regulation 278/05.

In addition, the regulation requires all buildings where asbestos has been used as part of the building to implement an Asbestos Management Program (AMP).

The major requirements of the AMP include:

- Preparation and maintenance of an on-site record of where asbestos material is located;
- Written notification provided to tenants or lessees occupying space where asbestos is present;
- Advise workers of the owner, other staff and outside contractors of the presence and location of ACM;
- Institute and maintain a program for the training and instruction of every worker employed in the building that is likely to work in close proximity to and may disturb asbestos.
- Update the asbestos report (minimum annually)
- Preparation of written asbestos work practices;
- Repair or removal of all damaged asbestos where it may be disturbed; and
- Other record keeping.

Ontario Regulation 347

Ontario Regulation 347 applies to the transport of waste from the location of generation to a landfill site authorized to receive specific wastes. The regulation also prescribes procedures on how the specific wastes are to be handled at the landfill site.

The major requirements of the building owner and the person(s) removing the waste are to ensure that:

- The waste is appropriately packaged and labelled;
- The transport vehicle is appropriately placard; and

- The waste is to be transported as directly as possible to the landfill site once it leaves the site.

Some wastes require the owner to register a Generator (of waste) number and many wastes require classification that can restrict or even prohibit their disposal in landfill.

It is important to note that the building owner can be held responsible for the waste until the waste disposal site accepts it.

3.0 SURVEY SCOPE AND METHODOLOGY

The survey was performed on a Room-by-Room basis, utilizing the provided initial Asbestos Survey, subsequent annual asbestos re-assessments and previous Limited Designated Substance Surveys. The methodology for the major materials included in the assessment and how the assessment was performed is outlined below.

In order to determine the location of materials included in the assessment, the project technologist entered each room, service area, etc. where practical (i.e. where access was possible without the demolition of walls, roof or ceilings or destruction of flooring). Representative views were made above accessible suspended ceiling systems. Cavities within solid ceiling and wall systems were accessed via existing access panels only. The inventory did not include demolition of building systems or finishes to check on possible hidden conditions.

Asbestos-Containing Building Materials (ACM)

The scope of the survey included all friable asbestos products and all major non-friable asbestos materials. The term friable is applied to a material that can be readily reduced to dust or powder by hand or moderate pressure. Asbestos materials that are friable have a much greater potential to release airborne asbestos fibres when disturbed.

Typical friable asbestos materials include: sprayed fireproofing or thermal insulation, textured (stippled) plaster, and thermal mechanical insulation. Typical non-friable materials include: asbestos cement (transite) products, vinyl floor tiles, asbestos textiles and gaskets. Additional materials such as ceiling tiles, drywall joint compounds and vinyl sheet flooring are classified as non-friable, but because of their ability to release dust when disturbed are considered as "potentially friable" for the purpose of this report.

Bulk samples of materials not collected during the Initial Asbestos Survey, Limited Designated Substance Surveys or subsequent re-assessments were collected during the survey. Specifically, a small volume of material was removed either from a damaged section of suspect material, or taken from intact material. In these latter cases, the material from which the sample was collected was sealed with tape to temporarily prevent fibre release. Samples were placed in plastic bags and sealed until receipt by an independent laboratory. To ensure quality results, the independent laboratory chosen successfully participates in an "Asbestos Proficiency Analytical Testing Program". As such, these independent laboratories are responsible for their findings.

Bulk samples were collected in accordance with regulatory sampling requirements and with sufficient frequency to obtain a general pattern of asbestos use within the

building. Due to building renovations or modifications that may have occurred in the past, the consistency of the application of asbestos materials may not be uniform throughout the entire Site. It is important to note that without sampling each individual wall, pipe section, ceiling tile etc. it is not possible to identify the asbestos content of every material present in the building. For this reason, visually similar materials are considered to be homogenous with those already sampled elsewhere in the building without additional analysis.

O. Reg. 278/05 prescribes that a minimum number of samples be collected of materials suspected to contain asbestos. These minimum sampling requirements are summarized in Table 1, below.

Table 1 - Suspect ACM Bulk Sampling Requirements

Type of Material	Quantity of Material Present	Minimum # of Bulk Samples Required
Surfacing Materials (i.e. sprayed fireproofing, drywall joint compound, texture coat, and plaster)	Up to 90 sq. m. (1000 sq. ft.)	3
	From 90 sq. m. (1000 sq. ft.) to 450 sq. m. (5000 sq. ft.)	5
	Greater than 450 sq. m. (5000 sq. ft.)	7
All other potential ACM	Any	3

Excluding surfacing materials, the laboratory was instructed to cease analysis within Sample Groups of homogenous materials when one of the samples in the group is found to contain asbestos. For example, if three samples of a type of vinyl floor tile are collected (as required by O. Reg. 278/05) and submitted for analysis and the first sample is positively identified as containing asbestos, the balance of the sample group is not analysed.

International Asbestos Testing Laboratories ("IATL"), an independent laboratory, was selected to analyse the collected bulk suspect asbestos samples. IATL successfully participates in an "Asbestos Proficiency Analytical Testing Program" and as such, is responsible for its findings. IATL followed the Code of Practice for the identification of asbestos in bulk material, as detailed in O. Reg. 278/05. Bulk samples were analysed using the Polarized Light Microscopy ("PLM") Technique with Dispersion Staining. The identification of asbestos fibre in bulk material is based on a collective set of parameters dependent on the unique shape and crystallographic properties of each fibre as viewed through the microscope. This method is useful for the qualitative identification of asbestos and the semi-quantitative determination of asbestos content in bulk materials expressed as a percent of projected area. The method identifies types of asbestos and also measures percent of asbestos as perceived by the analyst in comparison to standard area projections or trained experience.

Where possible, sample information from previous assessments were used to minimize the number of samples collected for the purpose of this report.

The recommendations made as part of this report with respect to asbestos have taken into consideration: the condition and accessibility of the material, vibration, air movement, and general activities likely to occur within the vicinity of the ACM.

Where ACM is found to be in GOOD condition and not likely to deteriorate or fall, the general recommendation would be to re-evaluate the condition of the material on an annual basis (required by O. Reg. 278/05). This recommendation can be subject to change if the material is located in a manner that persons untrained in asbestos awareness could physically damage it.

Where ACM is found to be damaged (i.e. FAIR or POOR condition), a recommendation to have the material cleaned-up, repaired, removed, enclosed, or encapsulated is offered. The recommendation will also indicate which asbestos procedure should be used to perform the remedial work (i.e. Type 1, Type 2, Type 3, or Glove Bag Removal Methods).

In each area or room inventoried, the technician recorded the quantity and condition (GOOD, FAIR, or POOR) of each suspect material.

The definitions for condition and accessibility items are as follows:

GOOD	Material is intact with no visible signs of damage.
FAIR	Material is visibly damaged but can be repaired.
POOR	Material is damaged beyond repair and likely needs to be removed.

Lead

The investigation included the collection and analysis of all major paint colour applications for the presence of lead in the paint. Other materials that possibly contain lead were identified by known historic use, where relevant. The lead in paint samples were analysed by IATL, using atomic absorption spectrophotometry. IATL is AIHA (American Industrial Hygiene Association) and NIOSH (National Institute of Occupational Safety and Health) accredited for this type of analysis. The Laboratory Analysis Report for lead in paint samples is included with this report as Appendix II.

Mercury

The assessment included a visual identification of fluorescent light tubes, switches, electrical controls, heating system thermostats, thermometers, and other components historically known to contain mercury.

Mould

The assessment for mould was conducted in accordance with standard industry practice as set out in the Canadian Construction Association (CCA) "Mould Guidelines for the Canadian Construction Industry" for a visual assessment. Although there are no regulatory requirements in Ontario for such an assessment, the CCA Guidelines, and similar guidelines from other agencies have been accepted as the industry standard by most experts, consultants, the Ontario Ministry of Labour, and the Canadian Construction Association.

All guidelines and protocols for mould investigations indicate that investigations should be performed largely on a visual basis with limited collection of bulk and/or air samples. The Ontario Ministry of Labour has consistently enforced the removal of all mould from buildings regardless of mould genus or species, and therefore bulk samples or air samples for confirmation of mould are not typically collected for investigative purposes where mould is visible.

Polychlorinated Biphenyls

Manufacturers labels/codes collected from fluorescent lamp ballasts suspected of containing Polychlorinated Biphenyls ("PCBs") are compared with Environment Canada's document titled "Identification of Lamp Ballasts Containing PCBs", which identifies PCB-containing ballasts.

Other Materials

Other materials listed in Section 1.0 of this report were identified on a visual basis where present, as part of the current assessment. It should be noted that no manufacturing or heavy industrial activities are known by Maple to occur at the Site. Therefore, Designated Substances associated with these activities (i.e. those other than Asbestos, Lead, Mercury, and Silica) would not be expected to be present at the subject facility.

Limitations and Omissions from Scope

Due to the nature of building construction some limitations exist as to the possible thoroughness of any building materials inventory. The field observations, measurements, and analysis are considered sufficient in detail and scope to form a reasonable basis for the findings presented in this report. Maple warrants that the findings and conclusions contained herein have been made in accordance with generally accepted evaluation methods in the industry and applicable regulations at the time of the performance of the inventory.

It is possible that conditions may exist which could not be reasonably identified within the scope of the inventory or which were not apparent during the Site investigation. Maple believes that the information collected during the investigation concerning the property is reliable. No other warranties are implied or expressed.

During a standard ACM inventory performed for the purposes of regulatory compliance, it is industry practice to exclude certain suspect asbestos-containing materials from sampling. These materials are often excluded from sampling due to the risk of compromising the health and safety of the technician, other building occupants, or the integrity of the systems with which these materials are associated. Examples of such materials include; elevator brakes, roofing felts and mastics, high voltage wiring, mechanical packing and gaskets, underground services or piping, fire-doors, window caulking and levelling compound. Where observed, these materials were presumed to be ACM.

Drawings

Where present, the drawings indicate samples locations and the location of major applications of asbestos materials with the exception of mechanical insulations (which cannot be accurately depicted on drawings). The information depicted on the

drawings is not to scale and is meant to indicate a general representation of the location of asbestos materials.

4.0 INVENTORY FINDINGS

The findings of the survey are presented separately below for each of the eleven Designated Substances as well as microbial growth (mould), and PCBs. Asbestos is further detailed by typical applications of asbestos.

ASBESTOS

The following is a brief discussion of the extent to which ACM was identified in the building. The discussion is organized under the headings of materials that are generally suspected of containing asbestos. The sample numbers refer to the Laboratory Analysis Reports from the numerous sampling phases completed during the Initial Asbestos Survey, previous Limited Designated Substance Surveys, annual Re-assessments and the current Designated Substance Survey. The information is summarised in Tables 2, 3, 4, 5, 6, 7 and 8 below.

**Table 2 – Summary of Analysis for Initial Asbestos Survey
 Asbestos Bulk Samples Collected May 7, 1999**

Sample No.	Location (at the time of sampling)	Sample Description	Result
01	Transformer Room (101)	2'x4' Ceiling Tile	None Detected
02	Mechanical Room (105)	Ceiling Plaster	None Detected
03	Duct Shaft (106)	Valve Packing Insulation	50-60% Chrysotile
04	Corridor (112)	Drywall Joint Compound	None Detected
05	Corridor (112)	2'x4' Ceiling Tile	None Detected
06	Corridor (112)	Valve Packing Insulation	60-70% Chrysotile
07	Corridor (112)	Chilled Water Elbow	50-60% Chrysotile
08	Computer Room (115)	2'x2' Ceiling Tile	None Detected
09	Computer Room (115)	12"x12" Floor Tile	None Detected

Sample No.	Location (at the time of sampling)	Sample Description	Result
10	Information Technology (121)	Sprayed Fireproofing	None Detected
11	Roof (Original Building)	Roofing Membrane	None Detected
12	Fan Room 'A'	Transite Board	80-90% Chrysotile
13	Fan Room 'A'	Duct Edging Tape	None Detected
14	Corridor (127)	Pipe Insulation Jacket	None Detected
15	Corridor (134)	2'x4' Ceiling Tile	None Detected
16	Men's Washroom (140)	Sprayed Fireproofing	None Detected
17	Human Resource (202)	Drywall-Fire Separ.	None Detected
18	Government Office (210)	12"x12" Floor Tile	None Detected
19	Purchasing (201)	Sprayed Fireproofing	70-80% Amosite
20	Police Room (218)	2'x4' Ceiling Tile	None Detected
21	Atrium Ceiling (231)	Sprayed Fireproofing	None Detected
22	Court Reporter (215)	Plaster	None Detected
Earlier Sample 01	Press Room	Acoustic Plaster	30-40% Chrysotile
Earlier Sample 02	Council Chambers	Acoustic Plaster	30-40% Chrysotile

**Table 3 – Summary of Analysis for Asbestos Bulk Samples
 Collected September 4, 2008**

Sample No.	Location (at the time of sampling)	Sample Description	Result
236-01	Corridor (112)	Drywall Joint Compound	None Detected

Sample No.	Location (at the time of sampling)	Sample Description	Result
236-02	Corridor (117)	Drywall Joint Compound	None Detected
236-03	Storage Room (115)	Drywall Joint Compound	None Detected
236-04	Boiler Room	Drywall Joint Compound	None Detected
236-05	Corridor (133)	Drywall Joint Compound	None Detected
236-06	Receiving Corridor	Drywall Joint Compound	None Detected

**Table 4 – Summary of Analysis for Limited Designated Substance Survey
Asbestos Bulk Samples Collected September 14, 2012**

Sample No.	Location (at the time of sampling)	Sample Description	Result
13210-S-01A	Kitchen	Drywall Joint Compound	None Detected
13210-S-01B	Meeting Room	Drywall Joint Compound	None Detected
13210-S-01C	File Room	Drywall Joint Compound	None Detected
13210-S-01D	Human Resource Corridor	Drywall Joint Compound	None Detected
13210-S-01E	Purchasing	Drywall Joint Compound	None Detected
13210-S-02A	Kitchen	Tan Floor Tile	None Detected
		Black Mastic	None Detected
13210-S-02B	Kitchen	Tan Floor Tile	None Detected
		Black Mastic	None Detected
13210-S-02C	Kitchen	Tan Floor Tile	None Detected
13210-S-03A	File Room	White Plaster	None Detected
		Brown Plaster	None Detected
		Grey Insulation	None Detected
13210-S-03B	Meeting Room	White Plaster	None Detected
		Brown Plaster	None Detected
13210-S-03C	Meeting Room	White Plaster	None Detected

Sample No.	Location (at the time of sampling)	Sample Description	Result
		Brown Plaster	None Detected
13210-S-04A	Kitchen	Sprayed Fireproofing	None Detected
13210-S-04B	File Room	Sprayed Fireproofing	None Detected
13210-S-04C	Meeting Room	Sprayed Fireproofing	None Detected

**Table 5 – Summary of Analysis for Limited Designated Substance Survey
Asbestos Bulk Samples Collected September 21, 2012**

Sample No.	Location (at the time of sampling)	Sample Description	Result
13210-S-01A	Exterior	White Door Caulking	None Detected
13210-S-01B	Exterior	White Door Caulking	None Detected
13210-S-01C	Exterior	White Door Caulking	None Detected
13210-S-02A	Stage Area (2 nd Ceiling)	White Plaster	None Detected
		Grey Plaster	None Detected
13210-S-02B	Stage Area (2 nd Ceiling)	White Plaster	None Detected
		Grey Plaster	None Detected
13210-S-02C	Adjacent to Jail File Room	Joint Compound	None Detected
13210-S-03A	Council Camber	Sprayed Fireproofing	None Detected
13210-S-03B	Meeting Room	Sprayed Fireproofing	None Detected
13210-S-03C	Meeting Room	Sprayed Fireproofing	None Detected
13210-S-04A	Meeting Room	Texture Coat	None Detected
13210-S-04B	Meeting Room	Texture Coat	None Detected
13210-S-04C	Reception Area	Texture Coat	None Detected
13210-S-05A	Meeting Room	Drywall Joint Compound	None Detected
13210-S-05B	Location 26	Drywall Joint Compound	None Detected
13210-S-05C	Office	Drywall Joint Compound	None Detected

Sample No.	Location (at the time of sampling)	Sample Description	Result
13210-S-05D	Meeting Room C	Drywall Joint Compound	None Detected
13210-S-05E	By Law Enforcement Office	Drywall Joint Compound	None Detected
13210-S-05F	Corridor	Drywall Joint Compound	None Detected
13210-S-05G	Location 25	Drywall Joint Compound	None Detected
13210-S-06A	Corridor	Tan Floor Tile	None Detected
		Black Mastic	None Detected
13210-S-06B	Corridor	Tan Floor Tile	None Detected
		Black Mastic	None Detected
13210-S-06C	Corridor	Tan Floor Tile	None Detected
		Black Mastic	None Detected
13210-S-07A	Location 26	Off-White Caulking	None Detected
13210-S-07B	Location 27	Off-White Caulking	None Detected
13210-S-07C	Location 27	Off-White Caulking	None Detected

**Table 6 – Summary of Analysis for Limited Designated Substance Survey
Asbestos Bulk Samples Collected April 25, 2014**

Sample No.	Location (at the time of sampling)	Sample Description	Result
14293-S-01A	Lower Floor Men's Washroom	Grey Plaster	None Detected
		White Plaster	None Detected
		Joint Compound	None Detected
14293-S-01B	Upper Floor Men's Washroom	Grey Plaster	None Detected
14293-S-01C	Upper Floor Women's Washroom	Grey Plaster	None Detected
		White Plaster	None Detected
14293-S-02A	Lower Floor Women's Washroom	Tile Grout	None Detected

Sample No.	Location (at the time of sampling)	Sample Description	Result
14293-S-02B	Lower Floor Men's Washroom	Tile Grout	None Detected
14293-S-02C	Upper Floor Women's Washroom	Tile Grout	None Detected
14293-S-02A	Upper Floor Women's Washroom	Drywall Joint Compound	None Detected
14293-S-03B	Upper Floor Women's Washroom	Drywall Joint Compound	None Detected
14293-S-03C	Upper Floor Women's Washroom	Drywall Joint Compound	None Detected

Table 7 – Summary of Analysis for Asbestos Bulk Samples Collected June 4, 2014

Sample No.	Location (at the time of sampling)	Sample Description	Result
14251-S-01A	Generator Room	Parging Cement	None Detected
14251-S-01B	Generator Room	Parging Cement	None Detected
14251-S-01C	Generator Room	Parging Cement	None Detected

**Table 8 – Summary of Analysis for 2014 Designated Substance Survey
Asbestos Bulk Samples Collected November 6, 2014**

Sample No.	Location (at the time of sampling)	Sample Description	Result
14478-S-01A	Print Shop Corridor	Sprayed Fireproofing	None Detected
14478-S-02A	2 nd Floor North Atrium	Textured Plaster	None Detected
		Grey Plaster	None Detected
14478-S-02B	2 nd Floor North Atrium	Textured Plaster	None Detected
		Grey Plaster	None Detected
14478-S-02C	2 nd Floor North Atrium	Textured Plaster	None Detected
		Grey Plaster	None Detected
14478-S-03A	2 nd Floor Corridor	Texture Coat	None Detected

Sample No.	Location (at the time of sampling)	Sample Description	Result
14478-S-03B	2 nd Floor Corridor	Texture Coat	None Detected
14478-S-03C	2 nd Floor Corridor	Texture Coat	None Detected
14478-S-03D	1 st Floor Corridor	Texture Coat	None Detected
14478-S-04A	Print Shop Corridor	12"x12" Tan with Brown Streaks Vinyl Floor Tile	None Detected
		Black Mastic	None Detected
14478-S-04B	Print Shop Corridor	12"x12" Tan with Brown Streaks Vinyl Floor Tile	None Detected
		Black Mastic	None Detected
14478-S-04C	Print Shop Corridor	12"x12" Tan with Brown Streaks Vinyl Floor Tile	None Detected
		Black Mastic	None Detected
14478-S-05A	Maintenance Office Corridor	12"x12" Dark Beige with Brown Streaks Vinyl Floor Tile	None Detected
		Black Mastic	None Detected
14478-S-05B	Maintenance Office Corridor	12"x12" Dark Beige with Brown Streaks Vinyl Floor Tile	None Detected
		Black Mastic	None Detected
14478-S-05C	Maintenance Office Corridor	12"x12" Dark Beige with Brown Streaks Vinyl Floor Tile	None Detected
		Black Mastic	None Detected

It should be noted that due to the presence of solid wall and ceiling systems (i.e. drywall) in some areas, access for viewing above ceiling and within wall cavities was not always possible. Suspect asbestos materials may be present within wall cavities or above ceilings that were not identified in this report. This comment is particularly important for materials such as mechanical insulation. Caution should be taken when demolishing solid wall and ceiling finishes within the building.

Sprayed Fireproofing (*Friable*)

Asbestos and Non-asbestos containing sprayed fireproofing was identified within the building.

Sprayed fireproofing was previously sampled by others and found to contain **80% Amosite Asbestos**. The subject asbestos-containing sprayed fireproofing is concealed above the transite overhang on the east side of the building and was not accessible for inspection at the time of the current assessment.

Non asbestos-containing sprayed fireproofing present throughout the building was sampled by Maple during previous Limited Designated Substance Surveys and during the current survey. A total of eleven (11) representative samples of sprayed fireproofing have analysed and found to not contain asbestos.

Thermal Mechanical Insulation (*Friable*)

Asbestos and non-asbestos containing mechanical insulation was identified within the building.

The various types of mechanical insulations and the system to which they are applied are summarised below. It should be noted that there was no access within solid wall and ceiling cavities and that ACM pipe insulations may be present that was not identified in this report.

Piping Systems

Parging cement insulation present on pipe fittings were previously sampled by others and found to contain between **50%-70% Chrysotile Asbestos**. The material was observed to be in GOOD condition with the exception of two (2) fittings observed in FAIR condition within the Mechanical Room.

Parging cement within the Generator Room was collected and analysed for determination of asbestos content. Analysis of Sample Set 14251-S-01A-C found that the material within that location does not contain asbestos.

All remaining mechanical insulations observed within the building were either not insulated or insulated with non-asbestos fibreglass.

Duct Systems

Ductwork, where observed within the building, was either not insulated or insulated with a layer of fibreglass insulation.

*Mechanical Equipment (*Friable*)*

Mechanical equipment observed within the building was externally un-insulated.

Texture Finish (*Friable*)

No asbestos-containing texture coat was identified within the surveyed areas.

A total of seven (7) representative samples of texture coat have been collected during previous assessments. Analysis of the Sample Sets found that the material does not contain asbestos.

Acoustic Ceiling Tiles (*Potentially Friable*)

No asbestos-containing acoustic ceiling tiles were identified within the building.

Five (5) representative samples of a 2'x4' acoustic ceiling tile were previously sampled by others during the initial asbestos assessment. Analysis found that the samples do not contain asbestos.

In addition, one (1) sample of a 2'x2' acoustic ceiling tile was previously sampled by others during initial assessment and found to not contain asbestos.

All remaining ceiling tiles were observed with a manufacturer's date stamp indicating the material is of recent construction and not suspected to contain asbestos.

Vinyl Sheet Flooring (*Potentially Friable*)

Vinyl Sheet Flooring was not observed within the building during the current assessment.

Vinyl Floor Tile (*Non-Friable*)

No asbestos-containing vinyl floor tiles were identified within the building.

A 12"x12", Tan with Brown Streaks vinyl floor tile was observed to be present within the Print Shop Corridor. The material is specifically located below another vinyl tile floor. Three (3) representative samples of the material (Samples Set 14478-S-04A-C) were collected and analysed for determination of asbestos content. Analysis of Sample Set 14478-S-04 found that the material does not contain asbestos.

A 12"x12", Dark Beige with Brown Streaks vinyl floor tile was observed to be present within the Maintenance Office Corridor and Washroom. Three (3) representative samples of the material (Samples Set 14478-S-05A-C) were collected and analysed for determination of asbestos content. Analysis of Sample Set 14478-S-05 found that the material does not contain asbestos.

A 12"x12", vinyl floor tile with brown streaks was collected from a Kitchen during the Limited Designated Substance Survey dated September 2012. Three (3) representative samples of the material (Samples Set 13210-S-02A-C) were collected and analysed for determination of asbestos content. Analysis of Sample Set 13210-S-02 found that the material does not contain asbestos.

A 12"x12", Beige with Brown Streaks vinyl floor tile was collected from a corridor near the entrance during the Limited Designated Substance Survey dated September 2012. Three (3) representative samples of the material (Samples Set 13210-S-06A-C) were collected and analysed for determination of asbestos content. Analysis of Sample Set 13210-S-06 found that the material does not contain asbestos.

Black mastic was also included in the analysis process of the tiles. Analysis of the black mastic found that the material does not contain asbestos.

Asbestos Cement Products "Transite" (Non-Friable)

Asbestos-containing cement products are present within the building.

Asbestos-containing transite panels on the building exterior were sampled by others during the initial asbestos survey. Analysis of Sample 12 found that the material contains between **80%-90% Chrysotile Asbestos**.

The transite soffit panels are located on the east side of the building and were observed to be in GOOD condition.

Drywall Joint Compound (DJC)

No asbestos-containing drywall joint compound was identified within building.

A total of twenty-two (22) representative samples of drywall joint compound have been collected during the building's assessments and analyzed for determination of asbestos content. Analysis of the Sample Sets found that the material does not contain asbestos.

Plaster

No asbestos-containing plaster materials were identified within the building.

Two (2) distinct plaster finishes were observed to be present within the building. A description of each plaster finish is described below.

- Smooth Plaster

A total of nine (9) representative samples of smooth plaster have been collected during all the building's assessments. Analysis of the Sample Sets have found that the material does not contain asbestos.

- Textured Plaster

Three (3) representative samples (Samples Set 14478-S-02A-C) of textured plaster were collected and analysed during all the current assessment. Analysis of Sample Set 14478-S-02 found that the material does not contain asbestos.

The material was observed to be present within the North Atrium.

Other

White exterior caulking (Sample Set 13210-S-01) and white interior caulking (Sample Set 13210-S-07) were collected and analysed during the Limited Designated Substance Survey dated September 2012. Analysis of the Sample Sets found that the white exterior and interior caulking do not contain asbestos.

Three (3) representative samples of tile grout (Sample Set 14293-S-02A-C) were collected within the Upper and Lower Washrooms during the Limited Designated Substance Survey dated 2014. Analysis of Sample Set 14293-S-02 found that the material does not contain asbestos.

LEAD

The following is a brief discussion of the extent to which lead-containing paint was identified in the building. The sample numbers refer to the Laboratory Analysis Reports from the numerous sampling phases completed during previous Limited Designated Substance Surveys and the current Designated Substance Survey. The information is summarised in Tables 9, 10, 11 and 12 below.

**Table 9 - Summary of Analysis for Limited Designated Substance Survey
Paint Bulk Samples Collected September 14, 2014**

Sample No.	Room Name	Sample Description	Result (%)
Pb-01	Kitchen (Wall)	Beige Paint	0.089

**Table 10 - Summary of Analysis for Limited Designated Substance Survey
Paint Bulk Samples Collected September 21, 2014**

Sample No.	Room Name	Sample Description	Result (%)
Pb-01	Tunnel (Wall)	White Paint	0.018
Pb-02	Shipping and Receiving (Exterior Wall)	Brown Paint	<0.008
Pb-03	Shipping and Receiving (Exterior Wall)	Mortar	<0.0076
Pb-04	White Paint (Wall)	White Paint	<0.009
Pb-05	Meeting Room (Radiator)	Pink Paint	<0.017
Pb-06	Meeting Room B (Radiator)	Beige Paint	<0.0083
Pb-07	Location 27 (Exterior Wall)	Mortar	<0.0069

**Table 11 - Summary of Analysis for Limited Designated Substance Survey
Paint Bulk Samples Collected April 24, 2014**

Sample No.	Room Name	Sample Description	Result (%)
L-01	Lower Floor Men's Washroom (Wall)	Dark Beige Paint	0.10

L-02	Upper Floor Women's Washroom (Ceiling)	Beige Paint	0.23
L-03	Upper Floor Women's Washroom (Wall)	Yellow Paint	0.22

**Table 12 - Summary of Analysis for Limited Designated Substance Survey
 Paint Bulk Samples Collected November 6, 2014**

Sample No.	Room Name	Sample Description	Result (%)
L-01	Corridor (Ceiling)	White Paint	0.089
L-02	Stairwell (Wall)	Beige Paint	0.26

Although no regulations currently exist in Ontario, defining the lower limit of lead-containing materials, the EACO Lead Guideline for Construction, Renovation, Maintenance or Repair indicates that paints containing 0.1% lead be considered "lead-containing". Based on this criterion and the results of the sample analysis, lead-containing paint was identified in the form of beige, dark beige, yellow.

It should be noted that lead may also be present in wiring connectors, electric cable sheathing, solder joints on copper piping, ceramic glazes, lead sheeting, masonry mortar, and as sub-surface layers to the most recent paint layers currently applied, where present at the Site.

MERCURY

Mercury vapour is present in all fluorescent light tubes and HID lighting.

MOULD

One (1) square foot of visible mould site was observed within the 2nd Floor Corridor in front of the Tax Office window.

Water staining was also observed within the building. Approximately ten (10) SF within the 2nd Floor Corridor near the Legal department and approximately 20 SF within the 2nd Floor Corridor where it crosses over the South Atrium.

SILICA

Free crystalline silica, present as common construction sand, is present in all concrete and masonry products where present in the project area.

POLYCHLORINATED BIPHENYLS

The fluorescent lamp fixtures observed all contained T8 fluorescent light tubes. T8 fixtures have electronic ballast and are not considered as PCB-containing.

ISOCYANATES

Free isocyanate compounds would not be expected to be found in a non-manufacturing facility.

VINYL CHLORIDE MONOMER

Vinyl chloride monomer would not be expected to be found in a non-manufacturing facility.

BENZENE

Benzene would not be expected to be found in a non-manufacturing facility.

ACRYLONITRILE

Acrylonitrile would not be expected to be found in a non-manufacturing facility.

COKE OVEN EMISSIONS

Coke oven emissions would not be expected to be found in a non-manufacturing facility.

ARSENIC

Arsenic would not be expected to be found in a non-manufacturing facility.

ETHYLENE OXIDE

Ethylene oxide would not be expected to be found in a non-manufacturing facility.

5.0 RECOMMENDATIONS

Asbestos

Using Type 2 Asbestos procedures repair two (2) fittings observed to be in FAIR condition within the Mechanical Room.

Should any mechanical pipe insulations be removal or disturbed, Type 2, Type 3 or Glove Bag Asbestos procedures are required as per the work being completed.

Removal or disturbance of ACM sprayed fireproofing less than 1m² will require the use of Type 2 Asbestos procedures, greater than 1m² will require Type 3 Asbestos procedures.

Removal or disturbance of transite will require the use of Type 1 Asbestos procedures. If power tools are needed when removing or disturbing transite, Type 3 Asbestos procedures are required.

Ontario Regulation 278/05 also requires an annual re-assessment of all ACM.

Due to the presence of ACM, the building will require an Asbestos Management Program (AMP).

Lead

Paints (and other materials) found with a lead concentration should follow Type I lead abatement procedures, at a minimum, provided that; a) work does not include fume producing activities such as welding, burning, torching, etc., b) is not removed or demolished by scraping, sanding or striking c) airborne lead concentration are kept below 0.05 mg/m³ and d) general dust suppression and worker protection procedures are utilized including; minimum N95 respirator, protective clothing, and proper worker hygiene. However, it may be prudent that air monitoring be conducted during the disturbance of lead-containing materials to ensure airborne levels of lead do not exceed the acceptable limit.

Mercury

Mercury vapour is present in all fluorescent light tubes and HID lighting. All fluorescent light tubes should be handled and disposed of appropriately.

Silica

Free crystalline silica, present as common construction sand, is present in all concrete and masonry products where present in the project area.

Polychlorinated Biphenyls

Prior to disposal, all fluorescent lamp ballasts should be inspected and compared with Environment Canada's document titled "Identification of Lamp Ballasts Containing PCBs" for the presence of PCB's.

6.0 LIMITATIONS

Due to the nature of building construction some limitations exist as to the possible thoroughness of the subject investigation. The field observations are considered sufficient in detail and scope to form a reasonable basis for the findings presented in this report. Maple warrants that the findings and conclusions contained herein have been made in accordance with generally accepted evaluation methods in the industry and applicable regulations at the time of the performance of the assessment.

It is possible that conditions may exist which could not be reasonably identified within the scope of the investigation or which were not apparent during the site investigation. Maple believes that the information collected during the investigation period concerning the property is reliable. No other warranties are implied or expressed.

Information provided by Maple is intended for Client use only. Any use by a third party, of reports or documents authored by Maple, or any reliance by a third party on or decisions made by a third party based on the findings described in said documents, is the sole responsibility of such third parties. Maple accepts no

responsibility for damages suffered by any third party as a result of decisions made or actions conducted.

The liability of Maple or its staff will be limited to the lesser of the fees paid or actual damages incurred by the Client. Maple will not be responsible for any consequential or indirect damages. Maple will only be liable for damages resulting from negligence of Maple; all claims by the Client shall be deemed relinquished if not made within two years after last date of services provided.

Please contact Maple Environmental Inc. at (905) 257-4408 for inquiries regarding this project.

**MAPLE Environmental Inc.
Environment, Health & Safety Consultants**

Prepared By:



**Matthew Gibbs, H.BSc., WRT
Project Technologist**

Reviewed By:



**Brad Panzer
Senior Project Manager**

C:\Users\Matt\Google Drive\14400 - 14499\14478, Town of Oakville, Various Sites, DSUB, RFQ\09 - Town Hall\14478 - Town Hall DSUB Report.doc


APPENDIX I

LABORATORY ANALYSIS REPORTS – ASBESTOS
(CHRONOLOGICAL ORDER)

(Polarized Light Microscopy)

Project: Oakville Municipal Office / Town of Oakville Project No.: A9904339 Date: May 07, 1999

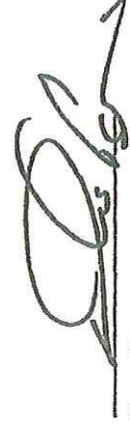
Sample #	Location / Description	% Asbestos					% Non-Asbestos					Non-Fibrous Materials	
		Chrysotile	Amosite	Other	Cellulose	Mineral Wool	Fibrous Glass	Synthetic Fibres	Other	Non-Fibrous Materials			
1-01	Transformer Rm (101) 2' x 4' Ceiling Tile	-	-	-	40-50%	40-50%	-	-	-	-	-	-	10-20%
1-02	Mechanical Rm (105) Ceiling Plaster	-	-	-	-	-	-	-	-	-	-	-	100%
1-03	Duct Shaft #106 Valve Packing Insul.	50-60%	-	-	< 10%	10-20%	-	-	-	-	-	-	20-30%
1-04	Corridor (112) Drywall Compound	-	-	-	< 10%	-	-	-	-	-	-	-	> 90%
1-05	Corridor (112) 2' x 4' Ceiling Tile	-	-	-	30-40%	30-40%	-	-	-	-	-	-	30-40%
1-06	Corridor (112) Packing at Valve	60-70%	-	-	-	10-20%	-	-	-	-	-	-	20-30%
1-07	Corridor (112) Chilled Water Elbow	50-60%	-	-	< 10%	10-20%	-	-	-	-	-	-	20-30%
1-08	Computer Room (115) 2' x 2' Ceiling Tile	-	-	-	30-40%	30-40%	-	-	-	-	-	-	30-40%
1-09	Computer Room (115) 12" x 12" Floor Tile	-	-	-	< 10%	-	-	-	-	-	-	-	> 90%
1-10	Inform. Technol. (121) Sprayed Fireproofing	-	-	-	30-40%	-	10-20%	-	-	-	-	-	50-60%


Don Panzer
Building Survey Consultants

(Polarized Light Microscopy)

Project: Oakville Municipal Office / Town of Oakville Project No.: A9904339 Date: May 07, 1999

Sample #	Location / Description	Chrysotile	Amosite	Other	Cellulose	Mineral Wool	Fibrous Glass	Synthetic Fibres	Other	Non-Fibrous Materials
-11	Roof - Orig. Building Roofing Membrane	-	-	-	30-40%	-	< 10%	-	-	60-70%
-12	Fan Room "A" Transit Board	80-90%	-	-	-	-	-	-	-	10-20%
-13	Fan Room "A" Duct Edging Tape	-	-	-	80-90%	-	-	-	-	10-20%
-14	Corridor (127) Pipe Insul. Jacket	-	-	-	20-30%	-	-	-	-	70-80%
-15	Corridor (134) 2' x 4' Ceiling Tile	-	-	-	30-40%	30-40%	-	-	-	30-40%
-16	Men's Washrm (140) Sprayed Fireproofing	-	-	-	30-40%	-	10-20%	-	-	50-60%
-17	Human Resour. (202) Drywall - Fire Separ.	-	-	-	10-20%	-	-	-	-	80-90%
-18	Gov't Offices (210) 12" 12" Floor Tile	-	-	-	< 10%	-	-	-	-	> 90%
-19	Purchasing (201) Sprayed Fireproofing	-	70-80%	-	-	-	-	-	-	20-30%
-20	Police Room (218) 2' x 4' Ceiling Tile	-	-	-	40-50%	40-50%	-	-	-	10-20%



Don Panzer
Building Survey Consultants

(Polarized Light Microscopy)

Project: Oakville Municipal Office / Town of Oakville Project No.: A9904339 Date: May 07, 1999

Sample #	Location / Description	% Asbestos					% Non-Asbestos				
		Chrysotile	Amosite	Crocidolite	Cellulose	Mineral Wool	Fibrous Glass	Synthetic Fibres	Other Fibres	Non-Fibrous Materials	

-21	Atrium Ceiling (231) Sprayed Fireproofing	-	-	-	30-40%	-	10-20%	-	-	50-60%
-22	Court Reporter (215) Plaster	-	-	-	-	-	-	-	-	100%

EARLIER SAMPLES

1-01	Ceiling-Press Room Acoustic Plaster	30-40%	-	-	< 10%	< 10%	-	-	-	50-60%
1-02	Council Chambers Acoustic Plaster	30-40%	-	-	< 10%	< 10%	-	-	-	50-60%



Don Panzer
Building Survey Consultants

CERTIFICATE OF ANALYSIS

Client: Building Survey Consultants
4044 Bridlepath Trail
Mississauga ON L5L 3E9

Report Date: 9/4/2008
Project: Oakville Town Hall 9/2/08
Project No.: C0808236

BULK SAMPLE ANALYSIS SUMMARY

Lab No.: 3408421	Description / Location: Tan Joint Compound		
Client No.: 236-01	Corridor #112-Ceiling		
<u>% Asbestos</u>	<u>Type</u>	<u>% Non-Asbestos Fibrous Material</u>	<u>Type</u>
None Detected	None Detected	None Detected	None Detected
			100

Lab No.: 3408422	Description / Location: White Joint Compound		
Client No.: 236-02	Corridor #117-Wall		
<u>% Asbestos</u>	<u>Type</u>	<u>% Non-Asbestos Fibrous Material</u>	<u>Type</u>
None Detected	None Detected	None Detected	None Detected
			100

Lab No.: 3408423	Description / Location: Off-White Joint Compound		
Client No.: 236-03	Storage Room #115-Wall		
<u>% Asbestos</u>	<u>Type</u>	<u>% Non-Asbestos Fibrous Material</u>	<u>Type</u>
None Detected	None Detected	None Detected	None Detected
			100

Lab No.: 3408424	Description / Location: White Joint Compound		
Client No.: 236-04	Boiler Room		
<u>% Asbestos</u>	<u>Type</u>	<u>% Non-Asbestos Fibrous Material</u>	<u>Type</u>
None Detected	None Detected	None Detected	None Detected
			100

NIST-NVLAP No. 101165-0

NY-DOH No. 11021

AIHA Lab No. 100188

*This confidential report relates only to those item(s) tested and does not represent an endorsement by NIST-NVLAP, AIHA or any agency of the U.S. government
This report shall not be reproduced except in full, without written approval of the laboratory.*

Analysis Method: EPA 600/R-93/116

Comments: (PC) Indicates Stratified Point Count Method performed. Method not performed unless stated. Quantification at <0.25% by volume is possible with this method. (PC-Trace) represents this limit of quantitation. (PC-Trace) means that asbestos was detected but is not quantifiable under the Point Counting regimen. Analysis includes all distinct separable layers in accordance with EPA 600 Method. If not reported or otherwise noted, layer is either not present or the client has specifically requested that it not be analyzed. Small asbestos fibers may be missed by PLM due to resolution limitations of the optical microscope. Therefore, negative PLM results cannot be guaranteed. Electron Microscopy can be used as a confirming technique. Regulatory Limit is based upon the sample matrix.

Analysis Performed By: B. Hargrove

Approved By: 

Date: 9/4/2008

CERTIFICATE OF ANALYSIS

Client: Building Survey Consultants
4044 Bridlepath Trail
Mississauga ON L5L 3E9

Report Date: 9/4/2008
Project: Oakville Town Hall 9/2/08
Project No.: C0808236

BULK SAMPLE ANALYSIS SUMMARY

Lab No.: 3408425	Description / Location: White Joint Compound			
Client No.: 236-05	Corridor #133			
<u>% Asbestos</u>	<u>Type</u>	<u>% Non-Asbestos Fibrous Material</u>	<u>Type</u>	<u>% Non-Fibrous Material</u>
None Detected	None Detected	None Detected	None Detected	100

Lab No.: 3408426	Description / Location: Off-White Joint Compound			
Client No.: 236-06	Receiving Corridor-Wall			
<u>% Asbestos</u>	<u>Type</u>	<u>% Non-Asbestos Fibrous Material</u>	<u>Type</u>	<u>% Non-Fibrous Material</u>
None Detected	None Detected	None Detected	None Detected	100

NIST-NVLAP No. 101165-0

NY-DOH No. 11021

AIHA Lab No. 100188

*This confidential report relates only to those item(s) tested and does not represent an endorsement by NIST-NVLAP, AIHA or any agency of the U.S. government
This report shall not be reproduced except in full, without written approval of the laboratory.*

Analysis Method: EPA 600/R-93/116

Comments: (PC) Indicates Stratified Point Count Method performed. Method not performed unless stated. Quantification at <0.25% by volume is possible with this method. (PC-Trace) represents this limit of quantitation. (PC-Trace) means that asbestos was detected but is not quantifiable under the Point Counting regimen. Analysis includes all distinct separable layers in accordance with EPA 600 Method. If not reported or otherwise noted, layer is either not present or the client has specifically requested that it not be analyzed. Small asbestos fibers may be missed by PLM due to resolution limitations of the optical microscope. Therefore, negative PLM results cannot be guaranteed. Electron Microscopy can be used as a confirming technique. Regulatory Limit is based upon the sample matrix.

Analysis Performed By: B. Hargrove

Date: 9/4/2008

Summary Bulk Sample Results

(Polarized Light Microscopy)

Project: Oakville Town Hall

Project No.: C0808236

Date: 04 September 2008

% Asbestos % Non-Asbestos

Sample #	Location / Description	Chrysotile	Amosite	Other	Cellulose	Mineral Wool	Fibrous Glass	Synthetic Fibres	Misc. Fibres	Non-Fibrous Materials
236-01	Corridor #112 Ceiling Drywall Compound	-	-	-	-	-	-	-	-	100%
236-02	Corridor #117 Wall Drywall Compound	-	-	-	-	-	-	-	-	100%
236-03	Storage #115 Wall Drywall Compound	-	-	-	-	-	-	-	-	100%
236-04	Boiler Room Drywall Compound	-	-	-	-	-	-	-	-	100%
236-05	Corridor # 133 Drywall Compound	-	-	-	-	-	-	-	-	100%
236-06	Receiving Corridor Drywall Compound	-	-	-	-	-	-	-	-	100%



Brad Panzer
 Building Survey Consultants

CERTIFICATE OF ANALYSIS

Client:	MAPLE Environmental, Inc. 2380 Wycroft Rd, Suite 2B Oakville, ON L6L 6W1	Report Date:	9/19/2012
		Report No.:	285677
		Project:	WorkArea"A"; TownOfOakville
		Project No.:	13210

BULK SAMPLE ANALYSIS SUMMARY

Lab No.:	4788324	Description / Location:	White Joint Compound Loc 1 - Kitchen
Client No.:	S-01A		
<u>% Asbestos</u>	<u>Type</u>	<u>% Non-Asbestos Fibrous Material</u>	<u>Type</u>
None Detected	None Detected	None Detected	None Detected
			100

Lab No.:	4788325	Description / Location:	White Joint Compound Loc 3 - Meeting Room
Client No.:	S-01B		
<u>% Asbestos</u>	<u>Type</u>	<u>% Non-Asbestos Fibrous Material</u>	<u>Type</u>
None Detected	None Detected	None Detected	None Detected
			100

Lab No.:	4788326	Description / Location:	Off-White Joint Compound Loc 2 - File Room
Client No.:	S-01C		
<u>% Asbestos</u>	<u>Type</u>	<u>% Non-Asbestos Fibrous Material</u>	<u>Type</u>
None Detected	None Detected	None Detected	None Detected
			100

Lab No.:	4788327	Description / Location:	White Joint Compound Loc 4 - HR Corridor
Client No.:	S-01D		
<u>% Asbestos</u>	<u>Type</u>	<u>% Non-Asbestos Fibrous Material</u>	<u>Type</u>
None Detected	None Detected	None Detected	None Detected
			100

Accreditations: **NIST-NVLAP No. 101165-0** **NY-DOH No. 11021** **AIHA-LAP, LLC No. 100188**
*This confidential report relates only to those item(s) tested and does not represent an endorsement by NIST-NVLAP, AIHA or any agency of the U.S. government
This report shall not be reproduced except in full, without written approval of the laboratory.*

Analytical Method: EPA 600/R-93/116, by Polarized Light Microscopy

Comments: Quantification at <0.25% by volume is possible with this method. (PC) Indicates Stratified Point Count Method performed. (PC-Trace) means that asbestos was detected but is not quantifiable under the Point Counting regimen. Analysis includes all distinct separable layers in accordance with EPA 600 Method. If not reported or otherwise noted, layer is either not present or the client has specifically requested that it not be analyzed (ex. analyze until positive instructions). Small asbestos fibers may be missed by PLM due to resolution limitations of the optical microscope. Therefore, PLM is not consistently reliable in detecting asbestos in non-friable organically bound (NOB) materials. Quantitative transmission electron microscopy (TEM) is currently the only method that can pronounce materials as non-asbestos containing.

Analysis Performed By: L. Price

Approved By: _____

Date: 9/19/2012

Frank E. Ehrenfeld, III
Laboratory Director

CERTIFICATE OF ANALYSIS**Client:** MAPLE Environmental, Inc.
2380 Wycroft Rd, Suite 2B
Oakville, ON L6L 6W1**Report Date:** 9/19/2012
Report No.: 285677
Project: WorkArea"A"; TownOfOakville
Project No.: 13210**BULK SAMPLE ANALYSIS SUMMARY**

Lab No.: 4788328	Description / Location: White Joint Compound			
Client No.: S-01E	Loc 5 - Purchasing			
<u>% Asbestos</u>	<u>Type</u>	<u>% Non-Asbestos Fibrous Material</u>	<u>Type</u>	<u>% Non-Fibrous Material</u>
None Detected	None Detected	None Detected	None Detected	100

Lab No.: 4788329	Description / Location: Tan Floor Tile			
Client No.: S-02A	Loc 1 - Kitchen			
<u>% Asbestos</u>	<u>Type</u>	<u>% Non-Asbestos Fibrous Material</u>	<u>Type</u>	<u>% Non-Fibrous Material</u>
None Detected	None Detected	None Detected	None Detected	100

Lab No.: 4788329	Description / Location: Black Mastic	Layer No.: 2		
Client No.: S-02A	Loc 1 - Kitchen			
<u>% Asbestos</u>	<u>Type</u>	<u>% Non-Asbestos Fibrous Material</u>	<u>Type</u>	<u>% Non-Fibrous Material</u>
None Detected	None Detected	None Detected	None Detected	100

Accreditations:**NIST-NVLAP No. 101165-0****NY-DOH No. 11021****AIHA-LAP, LLC No. 100188***This confidential report relates only to those item(s) tested and does not represent an endorsement by NIST-NVLAP, AIHA or any agency of the U.S. government**This report shall not be reproduced except in full, without written approval of the laboratory.***Analytical Method:**

EPA 600/R-93/116, by Polarized Light Microscopy

Comments:

Quantification at <0.25% by volume is possible with this method. (PC) Indicates Stratified Point Count Method performed. (PC-Trace) means that asbestos was detected but is not quantifiable under the Point Counting regimen. Analysis includes all distinct separable layers in accordance with EPA 600 Method. If not reported or otherwise noted, layer is either not present or the client has specifically requested that it not be analyzed (ex. analyze until positive instructions). Small asbestos fibers may be missed by PLM due to resolution limitations of the optical microscope. Therefore, PLM is not consistently reliable in detecting asbestos in non-friable organically bound (NOB) materials. Quantitative transmission electron microscopy (TEM) is currently the only method that can pronounce materials as non-asbestos containing.

Analysis Performed By: L. Price**Date:** 9/19/2012

CERTIFICATE OF ANALYSIS

Client:	MAPLE Environmental, Inc. 2380 Wycroft Rd, Suite 2B Oakville, ON L6L 6W1	Report Date:	9/19/2012
		Report No.:	285677
		Project:	WorkArea"A"; TownOfOakville
		Project No.:	13210

BULK SAMPLE ANALYSIS SUMMARY

Lab No.:	4788332	Description / Location:	White Plaster	
Client No.:	S-03A		Loc 2 - File Room	
<u>% Asbestos</u>	<u>Type</u>	<u>% Non-Asbestos Fibrous Material</u>	<u>Type</u>	<u>% Non-Fibrous Material</u>
None Detected	None Detected	None Detected	None Detected	100
Lab No.:	4788332	Description / Location:	Brown Plaster	Layer No.: 2
Client No.:	S-03A		Loc 2 - File Room	
<u>% Asbestos</u>	<u>Type</u>	<u>% Non-Asbestos Fibrous Material</u>	<u>Type</u>	<u>% Non-Fibrous Material</u>
None Detected	None Detected	None Detected	None Detected	100
Lab No.:	4788332	Description / Location:	Grey Insulation	Layer No.: 3
Client No.:	S-03A		Loc 2 - File Room	
<u>% Asbestos</u>	<u>Type</u>	<u>% Non-Asbestos Fibrous Material</u>	<u>Type</u>	<u>% Non-Fibrous Material</u>
None Detected	None Detected	95	Mineral Wool	5

Accreditations:

NIST-NVLAP No. 101165-0

NY-DOH No. 11021

AIHA-LAP, LLC No. 100188

*This confidential report relates only to those item(s) tested and does not represent an endorsement by NIST-NVLAP, AIHA or any agency of the U.S. government
This report shall not be reproduced except in full, without written approval of the laboratory.*

Analytical Method:

EPA 600/R-93/116, by Polarized Light Microscopy

Comments:

Quantification at <0.25% by volume is possible with this method. (PC) Indicates Stratified Point Count Method performed. (PC-Trace) means that asbestos was detected but is not quantifiable under the Point Counting regimen. Analysis includes all distinct separable layers in accordance with EPA 600 Method. If not reported or otherwise noted, layer is either not present or the client has specifically requested that it not be analyzed (ex. analyze until positive instructions). Small asbestos fibers may be missed by PLM due to resolution limitations of the optical microscope. Therefore, PLM is not consistently reliable in detecting asbestos in non-friable organically bound (NOB) materials. Quantitative transmission electron microscopy (TEM) is currently the only method that can pronounce materials as non-asbestos containing.

Analysis Performed By: L. Price

Date: 9/19/2012

CERTIFICATE OF ANALYSIS

Client: MAPLE Environmental, Inc.
2380 Wycroft Rd, Suite 2B
Oakville, ON L6L 6W1

Report Date: 9/19/2012
Report No.: 285677
Project: WorkArea"A"; TownOfOakville
Project No.: 13210

BULK SAMPLE ANALYSIS SUMMARY

Lab No.: 4788333	Description / Location: White Plaster			
Client No.: S-03B	Loc 3 - Meeting Room			
<u>% Asbestos</u>	<u>Type</u>	<u>% Non-Asbestos Fibrous Material</u>	<u>Type</u>	<u>% Non-Fibrous Material</u>
None Detected	None Detected	None Detected	None Detected	100

Lab No.: 4788333	Description / Location: Brown Plaster	Layer No.: 2		
Client No.: S-03B	Loc 3 - Meeting Room			
<u>% Asbestos</u>	<u>Type</u>	<u>% Non-Asbestos Fibrous Material</u>	<u>Type</u>	<u>% Non-Fibrous Material</u>
None Detected	None Detected	None Detected	None Detected	100

Lab No.: 4788334	Description / Location: White Plaster			
Client No.: S-03C	Loc 3 - Meeting Room			
<u>% Asbestos</u>	<u>Type</u>	<u>% Non-Asbestos Fibrous Material</u>	<u>Type</u>	<u>% Non-Fibrous Material</u>
None Detected	None Detected	None Detected	None Detected	100

Lab No.: 4788334	Description / Location: Brown Plaster	Layer No.: 2		
Client No.: S-03C	Loc 3 - Meeting Room			
<u>% Asbestos</u>	<u>Type</u>	<u>% Non-Asbestos Fibrous Material</u>	<u>Type</u>	<u>% Non-Fibrous Material</u>
None Detected	None Detected	None Detected	None Detected	100

Accreditations: **NIST-NVLAP No. 101165-0** **NY-DOH No. 11021** **AIHA-LAP, LLC No. 100188**
*This confidential report relates only to those item(s) tested and does not represent an endorsement by NIST-NVLAP, AIHA or any agency of the U.S. government
This report shall not be reproduced except in full, without written approval of the laboratory.*

Analytical Method: EPA 600/R-93/116, by Polarized Light Microscopy

Comments: Quantification at <0.25% by volume is possible with this method. (PC) Indicates Stratified Point Count Method performed. (PC-Trace) means that asbestos was detected but is not quantifiable under the Point Counting regimen. Analysis includes all distinct separable layers in accordance with EPA 600 Method. If not reported or otherwise noted, layer is either not present or the client has specifically requested that it not be analyzed (ex. analyze until positive instructions). Small asbestos fibers may be missed by PLM due to resolution limitations of the optical microscope. Therefore, PLM is not consistently reliable in detecting asbestos in non-friable organically bound (NOB) materials. Quantitative transmission electron microscopy (TEM) is currently the only method that can pronounce materials as non-asbestos containing.

Analysis Performed By: L. Price

Date: 9/19/2012

CERTIFICATE OF ANALYSIS

Client:	MAPLE Environmental, Inc. 2380 Wycroft Rd, Suite 2B Oakville, ON L6L 6W1	Report Date:	9/19/2012
		Report No.:	285677
		Project:	WorkArea"A"; TownOfOakville
		Project No.:	13210

BULK SAMPLE ANALYSIS SUMMARY

Lab No.: 4788335	Description / Location: White/Grey Insulation		
Client No.: S-04A	Loc 1 - Kitchen		
<u>% Asbestos</u>	<u>Type</u>	<u>% Non-Asbestos Fibrous Material</u>	<u>Type</u>
None Detected	None Detected	85	Mineral Wool
			15

Lab No.: 4788336	Description / Location: White/Grey Insulation		
Client No.: S-04B	Loc 2 - File Room		
<u>% Asbestos</u>	<u>Type</u>	<u>% Non-Asbestos Fibrous Material</u>	<u>Type</u>
None Detected	None Detected	80	Mineral Wool
			20

Lab No.: 4788337	Description / Location: White/Grey Insulation		
Client No.: S-04C	Loc 3 - Meeting Room		
<u>% Asbestos</u>	<u>Type</u>	<u>% Non-Asbestos Fibrous Material</u>	<u>Type</u>
None Detected	None Detected	80	Mineral Wool
			20

Accreditations: **NIST-NVLAP No. 101165-0** **NY-DOH No. 11021** **AIHA-LAP, LLC No. 100188**
*This confidential report relates only to those item(s) tested and does not represent an endorsement by NIST-NVLAP, AIHA or any agency of the U.S. government
This report shall not be reproduced except in full, without written approval of the laboratory.*

Analytical Method: EPA 600/R-93/116, by Polarized Light Microscopy

Comments: Quantification at <0.25% by volume is possible with this method. (PC) Indicates Stratified Point Count Method performed. (PC-Trace) means that asbestos was detected but is not quantifiable under the Point Counting regimen. Analysis includes all distinct separable layers in accordance with EPA 600 Method. If not reported or otherwise noted, layer is either not present or the client has specifically requested that it not be analyzed (ex. analyze until positive instructions). Small asbestos fibers may be missed by PLM due to resolution limitations of the optical microscope. Therefore, PLM is not consistently reliable in detecting asbestos in non-friable organically bound (NOB) materials. Quantitative transmission electron microscopy (TEM) is currently the only method that can pronounce materials as non-asbestos containing.

Analysis Performed By: L. Price

Date: 9/19/2012

CERTIFICATE OF ANALYSIS

Client: MAPLE Environmental, Inc.
2380 Wycroft Rd, Suite 2B
Oakville, ON L6L 6W1

Report Date: 9/28/2012
Report No.: 286439
Project: Work Area "B"; Sept21,2012
Project No.: 13210-Oakville

BULK SAMPLE ANALYSIS SUMMARY

Lab No.: 4796860 **Description / Location:** Grey Door Caulk
Client No.: S-01A Loc. 2 (Exterior)

<u>% Asbestos</u>	<u>Type</u>	<u>% Non-Asbestos Fibrous Material</u>	<u>Type</u>	<u>% Non-Fibrous Material</u>
None Detected	None Detected	None Detected	None Detected	100

Lab No.: 4796861 **Description / Location:** Grey Door Caulk
Client No.: S-01B Loc. 2 (Exterior)

<u>% Asbestos</u>	<u>Type</u>	<u>% Non-Asbestos Fibrous Material</u>	<u>Type</u>	<u>% Non-Fibrous Material</u>
None Detected	None Detected	None Detected	None Detected	100

Lab No.: 4796862 **Description / Location:** Grey Door Caulk
Client No.: S-01C Loc. 2 (Exterior)

<u>% Asbestos</u>	<u>Type</u>	<u>% Non-Asbestos Fibrous Material</u>	<u>Type</u>	<u>% Non-Fibrous Material</u>
None Detected	None Detected	None Detected	None Detected	100

Accreditations: **NIST-NVLAP No. 101165-0** **NY-DOH No. 11021** **AIHA-LAP, LLC No. 100188**

*This confidential report relates only to those item(s) tested and does not represent an endorsement by NIST-NVLAP, AIHA or any agency of the U.S. government
This report shall not be reproduced except in full, without written approval of the laboratory.*

Analytical Method: EPA 600/R-93/116, by Polarized Light Microscopy

Comments: Quantification at <0.25% by volume is possible with this method. (PC) Indicates Stratified Point Count Method performed. (PC-Trace) means that asbestos was detected but is not quantifiable under the Point Counting regimen. Analysis includes all distinct separable layers in accordance with EPA 600 Method. If not reported or otherwise noted, layer is either not present or the client has specifically requested that it not be analyzed (ex. analyze until positive instructions). Small asbestos fibers may be missed by PLM due to resolution limitations of the optical microscope. Therefore, PLM is not consistently reliable in detecting asbestos in non-friable organically bound (NOB) materials. Quantitative transmission electron microscopy (TEM) is currently the only method that can pronounce materials as non-asbestos containing.

Analysis Performed By: L. Solebello

Approved By: _____

Date: 9/28/2012

Frank E. Ehrenfeld, III
Laboratory Director

CERTIFICATE OF ANALYSIS

Client:	MAPLE Environmental, Inc.	Report Date:	9/28/2012
	2380 Wycroft Rd, Suite 2B	Report No.:	286439
	Oakville, ON L6L 6W1	Project:	Work Area "B"; Sept21,2012
		Project No.:	13210-Oakville

BULK SAMPLE ANALYSIS SUMMARY

Lab No.:	4796869	Description / Location:	White Texture	
Client No.:	S-04A		Loc. 5	
<u>% Asbestos</u>	<u>Type</u>	<u>% Non-Asbestos Fibrous Material</u>	<u>Type</u>	<u>% Non-Fibrous Material</u>
None Detected	None Detected	None Detected	None Detected	100

Lab No.:	4796870	Description / Location:	White Texture	
Client No.:	S-04B		Loc. 6	
<u>% Asbestos</u>	<u>Type</u>	<u>% Non-Asbestos Fibrous Material</u>	<u>Type</u>	<u>% Non-Fibrous Material</u>
None Detected	None Detected	None Detected	None Detected	100

Lab No.:	4796871	Description / Location:	White Texture	
Client No.:	S-04C		Loc. 16	
<u>% Asbestos</u>	<u>Type</u>	<u>% Non-Asbestos Fibrous Material</u>	<u>Type</u>	<u>% Non-Fibrous Material</u>
None Detected	None Detected	None Detected	None Detected	100

Lab No.:	4796872	Description / Location:	White Joint Compound	
Client No.:	S-05A		Loc. 5	
<u>% Asbestos</u>	<u>Type</u>	<u>% Non-Asbestos Fibrous Material</u>	<u>Type</u>	<u>% Non-Fibrous Material</u>
None Detected	None Detected	None Detected	None Detected	100

Accreditations: **NIST-NVLAP No. 101165-0** **NY-DOH No. 11021** **AIHA-LAP, LLC No. 100188**

*This confidential report relates only to those item(s) tested and does not represent an endorsement by NIST-NVLAP, AIHA or any agency of the U.S. government
This report shall not be reproduced except in full, without written approval of the laboratory.*

Analytical Method: EPA 600/R-93/116, by Polarized Light Microscopy

Comments: Quantification at <0.25% by volume is possible with this method. (PC) Indicates Stratified Point Count Method performed. (PC-Trace) means that asbestos was detected but is not quantifiable under the Point Counting regimen. Analysis includes all distinct separable layers in accordance with EPA 600 Method. If not reported or otherwise noted, layer is either not present or the client has specifically requested that it not be analyzed (ex. analyze until positive instructions). Small asbestos fibers may be missed by PLM due to resolution limitations of the optical microscope. Therefore, PLM is not consistently reliable in detecting asbestos in non-friable organically bound (NOB) materials. Quantitative transmission electron microscopy (TEM) is currently the only method that can pronounce materials as non-asbestos containing.

Analysis Performed By: L. Solebello

Date: 9/28/2012

CERTIFICATE OF ANALYSIS

Client:	MAPLE Environmental, Inc.	Report Date:	9/28/2012
	2380 Wycroft Rd, Suite 2B	Report No.:	286439
	Oakville, ON L6L 6W1	Project:	Work Area "B"; Sept21,2012
		Project No.:	13210-Oakville

BULK SAMPLE ANALYSIS SUMMARY

Lab No.:	4796873	Description / Location:	White Joint Compound	
Client No.:	S-05B		Loc. 26	
<u>% Asbestos</u>	<u>Type</u>	<u>% Non-Asbestos Fibrous Material</u>	<u>Type</u>	<u>% Non-Fibrous Material</u>
None Detected	None Detected	None Detected	None Detected	100

Lab No.:	4796874	Description / Location:	White Joint Compound	
Client No.:	S-05C		Loc. 7	
<u>% Asbestos</u>	<u>Type</u>	<u>% Non-Asbestos Fibrous Material</u>	<u>Type</u>	<u>% Non-Fibrous Material</u>
None Detected	None Detected	None Detected	None Detected	100

Lab No.:	4796875	Description / Location:	White Joint Compound	
Client No.:	S-05D		Loc. 11	
<u>% Asbestos</u>	<u>Type</u>	<u>% Non-Asbestos Fibrous Material</u>	<u>Type</u>	<u>% Non-Fibrous Material</u>
None Detected	None Detected	None Detected	None Detected	100

Lab No.:	4796876	Description / Location:	White Joint Compound	
Client No.:	S-05E		Loc. 14	
<u>% Asbestos</u>	<u>Type</u>	<u>% Non-Asbestos Fibrous Material</u>	<u>Type</u>	<u>% Non-Fibrous Material</u>
None Detected	None Detected	None Detected	None Detected	100

Accreditations: **NIST-NVLAP No. 101165-0** **NY-DOH No. 11021** **AIHA-LAP, LLC No. 100188**

*This confidential report relates only to those item(s) tested and does not represent an endorsement by NIST-NVLAP, AIHA or any agency of the U.S. government
This report shall not be reproduced except in full, without written approval of the laboratory.*

Analytical Method: EPA 600/R-93/116, by Polarized Light Microscopy

Comments: Quantification at <0.25% by volume is possible with this method. (PC) Indicates Stratified Point Count Method performed. (PC-Trace) means that asbestos was detected but is not quantifiable under the Point Counting regimen. Analysis includes all distinct separable layers in accordance with EPA 600 Method. If not reported or otherwise noted, layer is either not present or the client has specifically requested that it not be analyzed (ex. analyze until positive instructions). Small asbestos fibers may be missed by PLM due to resolution limitations of the optical microscope. Therefore, PLM is not consistently reliable in detecting asbestos in non-friable organically bound (NOB) materials. Quantitative transmission electron microscopy (TEM) is currently the only method that can pronounce materials as non-asbestos containing.

Analysis Performed By: L. Solebello

Date: 9/28/2012

CERTIFICATE OF ANALYSIS

Client:	MAPLE Environmental, Inc. 2380 Wycroft Rd, Suite 2B Oakville, ON L6L 6W1	Report Date:	9/28/2012
		Report No.:	286439
		Project:	Work Area "B"; Sept21,2012
		Project No.:	13210-Oakville

BULK SAMPLE ANALYSIS SUMMARY

Lab No.:	4796877	Description / Location:	White Joint Compound Loc. 18	
Client No.:	S-05F			
<u>% Asbestos</u>	<u>Type</u>	<u>% Non-Asbestos Fibrous Material</u>	<u>Type</u>	<u>% Non-Fibrous Material</u>
None Detected	None Detected	None Detected	None Detected	100

Lab No.:	4796878	Description / Location:	White Joint Compound Loc. 25	
Client No.:	S-05G			
<u>% Asbestos</u>	<u>Type</u>	<u>% Non-Asbestos Fibrous Material</u>	<u>Type</u>	<u>% Non-Fibrous Material</u>
None Detected	None Detected	None Detected	None Detected	100

Lab No.:	4796879	Description / Location:	Tan Floor Tile Loc. 18	
Client No.:	S-06A			
<u>% Asbestos</u>	<u>Type</u>	<u>% Non-Asbestos Fibrous Material</u>	<u>Type</u>	<u>% Non-Fibrous Material</u>
None Detected	None Detected	None Detected	None Detected	100

Lab No.:	4796879	Description / Location:	Black Mastic Loc. 18	Layer No.: 2
Client No.:	S-06A			
<u>% Asbestos</u>	<u>Type</u>	<u>% Non-Asbestos Fibrous Material</u>	<u>Type</u>	<u>% Non-Fibrous Material</u>
None Detected	None Detected	None Detected	None Detected	100

Accreditations:	NIST-NVLAP No. 101165-0	NY-DOH No. 11021	AIHA-LAP, LLC No. 100188
	<i>This confidential report relates only to those item(s) tested and does not represent an endorsement by NIST-NVLAP, AIHA or any agency of the U.S. government This report shall not be reproduced except in full, without written approval of the laboratory.</i>		

Analytical Method: EPA 600/R-93/116, by Polarized Light Microscopy

Comments: Quantification at <0.25% by volume is possible with this method. (PC) Indicates Stratified Point Count Method performed. (PC-Trace) means that asbestos was detected but is not quantifiable under the Point Counting regimen. Analysis includes all distinct separable layers in accordance with EPA 600 Method. If not reported or otherwise noted, layer is either not present or the client has specifically requested that it not be analyzed (ex. analyze until positive instructions). Small asbestos fibers may be missed by PLM due to resolution limitations of the optical microscope. Therefore, PLM is not consistently reliable in detecting asbestos in non-friable organically bound (NOB) materials. Quantitative transmission electron microscopy (TEM) is currently the only method that can pronounce materials as non-asbestos containing.

Analysis Performed By: L. Solebello

Date: 9/28/2012

CERTIFICATE OF ANALYSIS

Client: MAPLE Environmental, Inc.
2380 Wycroft Rd, Suite 2B
Oakville, ON L6L 6W1

Report Date: 9/28/2012
Report No.: 286439
Project: Work Area "B"; Sept21,2012
Project No.: 13210-Oakville

BULK SAMPLE ANALYSIS SUMMARY

Lab No.: 4796882 **Description / Location:** Off-White Caulk
Client No.: S-07A Loc. 26

<u>% Asbestos</u>	<u>Type</u>	<u>% Non-Asbestos Fibrous Material</u>	<u>Type</u>	<u>% Non-Fibrous Material</u>
None Detected	None Detected	None Detected	None Detected	100

Lab No.: 4796883 **Description / Location:** White Caulk
Client No.: S-07B Loc. 27

<u>% Asbestos</u>	<u>Type</u>	<u>% Non-Asbestos Fibrous Material</u>	<u>Type</u>	<u>% Non-Fibrous Material</u>
None Detected	None Detected	None Detected	None Detected	100

Lab No.: 4796884 **Description / Location:** White Caulk
Client No.: S-07C Loc. 27

<u>% Asbestos</u>	<u>Type</u>	<u>% Non-Asbestos Fibrous Material</u>	<u>Type</u>	<u>% Non-Fibrous Material</u>
None Detected	None Detected	None Detected	None Detected	100

Accreditations: **NIST-NVLAP No. 101165-0** **NY-DOH No. 11021** **AIHA-LAP, LLC No. 100188**

*This confidential report relates only to those item(s) tested and does not represent an endorsement by NIST-NVLAP, AIHA or any agency of the U.S. government
This report shall not be reproduced except in full, without written approval of the laboratory.*

Analytical Method: EPA 600/R-93/116, by Polarized Light Microscopy

Comments: Quantification at <0.25% by volume is possible with this method. (PC) Indicates Stratified Point Count Method performed. (PC-Trace) means that asbestos was detected but is not quantifiable under the Point Counting regimen. Analysis includes all distinct separable layers in accordance with EPA 600 Method. If not reported or otherwise noted, layer is either not present or the client has specifically requested that it not be analyzed (ex. analyze until positive instructions). Small asbestos fibers may be missed by PLM due to resolution limitations of the optical microscope. Therefore, PLM is not consistently reliable in detecting asbestos in non-friable organically bound (NOB) materials. Quantitative transmission electron microscopy (TEM) is currently the only method that can pronounce materials as non-asbestos containing.

Analysis Performed By: L. Solebello

Date: 9/28/2012

CERTIFICATE OF ANALYSIS

Client: Maple Environmental, Inc.
482 S.Service Rd East,Ste116
Oakville, ON L6J 2X6

Report Date: 5/1/2014
Report No.: 332587
Project: Oakville: Town Hall Washrooms
Project No.: 14293

BULK SAMPLE ANALYSIS SUMMARY

Lab No.: 5301209 **Description / Location:** Grey Plaster
Client No.: S-01A Lower Floor Men's Washroom

<u>% Asbestos</u>	<u>Type</u>	<u>% Non-Asbestos Fibrous Material</u>	<u>Type</u>	<u>% Non-Fibrous Material</u>
None Detected	None Detected	None Detected	None Detected	100

Lab No.: 5301209 **Description / Location:** White Plaster **Layer No.:** 2
Client No.: S-01A Lower Floor Men's Washroom

<u>% Asbestos</u>	<u>Type</u>	<u>% Non-Asbestos Fibrous Material</u>	<u>Type</u>	<u>% Non-Fibrous Material</u>
None Detected	None Detected	None Detected	None Detected	100

Lab No.: 5301209 **Description / Location:** Off-White Joint Compound **Layer No.:** 3
Client No.: S-01A Lower Floor Men's Washroom

<u>% Asbestos</u>	<u>Type</u>	<u>% Non-Asbestos Fibrous Material</u>	<u>Type</u>	<u>% Non-Fibrous Material</u>
None Detected	None Detected	None Detected	None Detected	100

Lab No.: 5301210 **Description / Location:** Grey Plaster
Client No.: S-01B Upper Floor Men's Washroom

<u>% Asbestos</u>	<u>Type</u>	<u>% Non-Asbestos Fibrous Material</u>	<u>Type</u>	<u>% Non-Fibrous Material</u>
None Detected	None Detected	None Detected	None Detected	100

Accreditations: **NIST-NVLAP No. 101165-0** **NY-DOH No. 11021** **AIHA-LAP, LLC No. 100188**

*This confidential report relates only to those item(s) tested and does not represent an endorsement by NIST-NVLAP, AIHA or any agency of the U.S. government
This report shall not be reproduced except in full, without written approval of the laboratory.*

Analytical Method: US EPA 600/R-93/116 by Polarized Light Microscopy, (ELAP 198.1 where applicable)

Comments: Quantification at <0.25% by volume is possible with this method. (PC) Indicates Stratified Point Count Method performed. (PC-Trace) means that asbestos was detected but is not quantifiable under the Point Counting regimen. Analysis includes all distinct separable layers in accordance with EPA 600 Method. If not reported or otherwise noted, layer is either not present or the client has specifically requested that it not be analyzed (ex. analyze until positive instructions). Small asbestos fibers may be missed by PLM due to resolution limitations of the optical microscope. Therefore, PLM is not consistently reliable in detecting asbestos in non-friable organically bound (NOB) materials. Quantitative transmission electron microscopy (TEM) is currently the only method that can pronounce materials as non-asbestos containing.

Analysis Performed By: T. Barkley

Approved By: 

Date: 5/1/2014

Frank E. Ehrenfeld, III
Laboratory Director

CERTIFICATE OF ANALYSIS

Client:	Maple Environmental, Inc. 482 S.Service Rd East,Ste116 Oakville, ON L6J 2X6	Report Date:	5/1/2014
		Report No.:	332587
		Project:	Oakville: Town Hall Washrooms
		Project No.:	14293

BULK SAMPLE ANALYSIS SUMMARY

Lab No.:	5301211	Description / Location:	Grey Plaster	
Client No.:	S-01C		Upper Floor Women's Washroom	
<u>% Asbestos</u>	<u>Type</u>	<u>% Non-Asbestos Fibrous Material</u>	<u>Type</u>	<u>% Non-Fibrous Material</u>
None Detected	None Detected	None Detected	None Detected	100

Lab No.:	5301211	Description / Location:	White Plaster	Layer No.: 2
Client No.:	S-01C		Upper Floor Women's Washroom	
<u>% Asbestos</u>	<u>Type</u>	<u>% Non-Asbestos Fibrous Material</u>	<u>Type</u>	<u>% Non-Fibrous Material</u>
None Detected	None Detected	None Detected	None Detected	100

Lab No.:	5301212	Description / Location:	White Grout	
Client No.:	S-02A		Lower Floor Women's Washroom	
<u>% Asbestos</u>	<u>Type</u>	<u>% Non-Asbestos Fibrous Material</u>	<u>Type</u>	<u>% Non-Fibrous Material</u>
None Detected	None Detected	None Detected	None Detected	100

Lab No.:	5301213	Description / Location:	White Grout	
Client No.:	S-02B		Lower Floor Men's Washroom	
<u>% Asbestos</u>	<u>Type</u>	<u>% Non-Asbestos Fibrous Material</u>	<u>Type</u>	<u>% Non-Fibrous Material</u>
None Detected	None Detected	None Detected	None Detected	100

Accreditations: **NIST-NVLAP No. 101165-0** **NY-DOH No. 11021** **AIHA-LAP, LLC No. 100188**

*This confidential report relates only to those item(s) tested and does not represent an endorsement by NIST-NVLAP, AIHA or any agency of the U.S. government
This report shall not be reproduced except in full, without written approval of the laboratory.*

Analytical Method: US EPA 600/R-93/116 by Polarized Light Microscopy, (ELAP 198.1 where applicable)

Comments: Quantification at <0.25% by volume is possible with this method. (PC) Indicates Stratified Point Count Method performed. (PC-Trace) means that asbestos was detected but is not quantifiable under the Point Counting regimen. Analysis includes all distinct separable layers in accordance with EPA 600 Method. If not reported or otherwise noted, layer is either not present or the client has specifically requested that it not be analyzed (ex. analyze until positive instructions). Small asbestos fibers may be missed by PLM due to resolution limitations of the optical microscope. Therefore, PLM is not consistently reliable in detecting asbestos in non-friable organically bound (NOB) materials. Quantitative transmission electron microscopy (TEM) is currently the only method that can pronounce materials as non-asbestos containing.

Analysis Performed By: T. Barkley

Date: 5/1/2014

CERTIFICATE OF ANALYSIS

Client:	Maple Environmental, Inc. 482 S.Service Rd East,Ste116 Oakville, ON L6J 2X6	Report Date:	5/1/2014
		Report No.:	332587
		Project:	Oakville: Town Hall Washrooms
		Project No.:	14293

BULK SAMPLE ANALYSIS SUMMARY

Lab No.:	5301214	Description / Location:	White Grout Upper Floor Women's Washroom	
Client No.:	S-02C			
<u>% Asbestos</u>	<u>Type</u>	<u>% Non-Asbestos Fibrous Material</u>	<u>Type</u>	<u>% Non-Fibrous Material</u>
None Detected	None Detected	None Detected	None Detected	100

Lab No.:	5301215	Description / Location:	White Joint Compound Upper Floor Women's Washroom	
Client No.:	S-03A			
<u>% Asbestos</u>	<u>Type</u>	<u>% Non-Asbestos Fibrous Material</u>	<u>Type</u>	<u>% Non-Fibrous Material</u>
None Detected	None Detected	None Detected	None Detected	100

Lab No.:	5301216	Description / Location:	White Joint Compound Upper Floor Women's Washroom	
Client No.:	S-03B			
<u>% Asbestos</u>	<u>Type</u>	<u>% Non-Asbestos Fibrous Material</u>	<u>Type</u>	<u>% Non-Fibrous Material</u>
None Detected	None Detected	None Detected	None Detected	100

Lab No.:	5301217	Description / Location:	White Joint Compound Upper Floor Women's Washroom	
Client No.:	S-03C			
<u>% Asbestos</u>	<u>Type</u>	<u>% Non-Asbestos Fibrous Material</u>	<u>Type</u>	<u>% Non-Fibrous Material</u>
None Detected	None Detected	None Detected	None Detected	100

Accreditations: **NIST-NVLAP No. 101165-0** **NY-DOH No. 11021** **AIHA-LAP, LLC No. 100188**

*This confidential report relates only to those item(s) tested and does not represent an endorsement by NIST-NVLAP, AIHA or any agency of the U.S. government
This report shall not be reproduced except in full, without written approval of the laboratory.*

Analytical Method: US EPA 600/R-93/116 by Polarized Light Microscopy, (ELAP 198.1 where applicable)

Comments: Quantification at <0.25% by volume is possible with this method. (PC) Indicates Stratified Point Count Method performed. (PC-Trace) means that asbestos was detected but is not quantifiable under the Point Counting regimen. Analysis includes all distinct separable layers in accordance with EPA 600 Method. If not reported or otherwise noted, layer is either not present or the client has specifically requested that it not be analyzed (ex. analyze until positive instructions). Small asbestos fibers may be missed by PLM due to resolution limitations of the optical microscope. Therefore, PLM is not consistently reliable in detecting asbestos in non-friable organically bound (NOB) materials. Quantitative transmission electron microscopy (TEM) is currently the only method that can pronounce materials as non-asbestos containing.

Analysis Performed By: T. Barkley

Date: 5/1/2014



Laboratory Analysis Report

To:

Josh Prosser

Maple Environmental Inc.
482 South Service Road East, Suite 116
Oakville, Ontario
L6J 2X6

EMC LAB REPORT NUMBER: A14316

Job/Project Name: 1225 Trafalgar Road #1, Oakville

Analysis Method: Polarized Light Microscopy – EPA 600

Date Received: Jun 4/14

Date Analyzed: Jun 4/14

Analysts: Ashley Lai, *Analyst* & Banu Gurgun-Keough, *Laboratory Manager*

Job No: 14251

Number of Samples: 3

Date Reported: Jun 4/14

Client's Sample ID	Lab Sample No.	Description/Location	Sample Appearance	SAMPLE COMPONENTS (%)		
				Asbestos Fibres	Non-asbestos Fibres	Non-fibrous Material
S-01A	A14316-1	Parging cement / generator room	Off-white, parging cement	ND	40	60
S-01B	A14316-2 ⁵	Parging cement / generator room	Off-white, parging cement	ND	40	60
S-01C	A14316-3 ⁵	Parging cement / generator room	Off-white, parging cement	ND	40	60

Note:

- Bulk samples are analyzed using Polarized Light Microscopy (PLM) and dispersion staining techniques. The analytical procedures are in accordance with EPA 600/R-93/116 method.
- The results are only related to the samples analyzed. **ND** = None Detected (no asbestos fibres were observed), **NA** = Not Analyzed (analysis stopped due to a previous positive result).
- This report may not be reproduced, except in full without the written approval of EMC Scientific Inc. This report may not be used by the client to claim product endorsement by NVLAP or any other agency of the U.S. Government.
- The Ontario Regulatory Threshold for asbestos is 0.5%. The limit of quantification (LOQ) is 0.5%
- Fiberglass is present on the surface of the sample.



9000 Commerce Parkway, Ste B
 Mount Laurel, NJ 08054
 Toll Free 877-428-4285
 Local: 856-231-9449
 Fax: 856-231-9818

CERTIFICATE OF ANALYSIS

Client:	Maple Environmental, Inc.	Report Date:	11/14/2014
	482 S.Service Rd East,Ste116	Report No.:	350124
	Oakville, ON L6J 2X6	Project:	Oakville Town Hall
		Project No.:	14478

BULK SAMPLE ANALYSIS SUMMARY

Lab No.:	5477142	Description / Location:	White Texture Plaster	
Client No.:	S-02B		2nd Floor North Atrium	
<u>% Asbestos</u>	<u>Type</u>	<u>% Non-Asbestos Fibrous Material</u>	<u>Type</u>	<u>% Non-Fibrous Material</u>
None Detected	None Detected	None Detected	None Detected	100

Lab No.:	5477142	Description / Location:	Grey Plaster	Layer No.:	2
Client No.:	S-02B		2nd Floor North Atrium		
<u>% Asbestos</u>	<u>Type</u>	<u>% Non-Asbestos Fibrous Material</u>	<u>Type</u>	<u>% Non-Fibrous Material</u>	
None Detected	None Detected	None Detected	None Detected	100	

Lab No.:	5477143	Description / Location:	White Texture Plaster	
Client No.:	S-02C		2nd Floor North Atrium	
<u>% Asbestos</u>	<u>Type</u>	<u>% Non-Asbestos Fibrous Material</u>	<u>Type</u>	<u>% Non-Fibrous Material</u>
None Detected	None Detected	None Detected	None Detected	100

Lab No.:	5477143	Description / Location:	Grey Plaster	Layer No.:	2
Client No.:	S-02C		2nd Floor North Atrium		
<u>% Asbestos</u>	<u>Type</u>	<u>% Non-Asbestos Fibrous Material</u>	<u>Type</u>	<u>% Non-Fibrous Material</u>	
None Detected	None Detected	None Detected	None Detected	100	

Accreditation **NIST-NVLAP No. 101165-0** **NY-DOH No. 11021** **AIHA-LAP, LLC No. 100188**

*This confidential report relates only to those item(s) tested and does not represent an endorsement by NIST-NVLAP, AIHA or any agency of the U.S. government
 This report shall not be reproduced except in full, without written approval of the laboratory.*

Analytical Method: US EPA 600/R-93/116 by Polarized Light Microscopy, (ELAP 198.1 where applicable)

Comments: Quantification at <0.25% by volume is possible with this method. (PC) Indicates Stratified Point Count Method performed. (PC-Trace) means that asbestos was detected but is not quantifiable under the Point Counting regimen. Analysis includes all distinct separable layers in accordance with EPA 600 Method. If not reported or otherwise noted, layer is either not present or the client has specifically requested that it not be analyzed (ex. analyze until positive instructions). Small asbestos fibers may be missed by PLM due to resolution limitations of the optical microscope. Therefore, PLM is not consistently reliable in detecting asbestos in non-friable organically bound (NOB) materials. Quantitative transmission electron microscopy (TEM) is currently the only method that can pronounce materials as non-asbestos containing.

Analysis Performed By: M. Mirza

Date: 11/14/2014



9000 Commerce Parkway, Ste B
 Mount Laurel, NJ 08054
 Toll Free 877-428-4285
 Local: 856-231-9449
 Fax: 856-231-9818

CERTIFICATE OF ANALYSIS

Client:	Maple Environmental, Inc.	Report Date:	11/14/2014
	482 S.Service Rd East,Ste116	Report No.:	350124
	Oakville, ON L6J 2X6	Project:	Oakville Town Hall
		Project No.:	14478

BULK SAMPLE ANALYSIS SUMMARY

Lab No.:	5477144	Description / Location:	White Texture Coat	
Client No.:	S-03A		2nd Floor Corridor	
<u>% Asbestos</u>	<u>Type</u>	<u>% Non-Asbestos Fibrous Material</u>	<u>Type</u>	<u>% Non-Fibrous Material</u>
None Detected	None Detected	None Detected	None Detected	100

Lab No.:	5477145	Description / Location:	White/Lt Tan Texture Coat	
Client No.:	S-03B		2nd Floor Corridor	
<u>% Asbestos</u>	<u>Type</u>	<u>% Non-Asbestos Fibrous Material</u>	<u>Type</u>	<u>% Non-Fibrous Material</u>
None Detected	None Detected	None Detected	None Detected	100

Lab No.:	5477146	Description / Location:	White/Lt Tan Texture Coat	
Client No.:	S-03C		2nd Floor Corridor	
<u>% Asbestos</u>	<u>Type</u>	<u>% Non-Asbestos Fibrous Material</u>	<u>Type</u>	<u>% Non-Fibrous Material</u>
None Detected	None Detected	None Detected	None Detected	100

Lab No.:	5477147	Description / Location:	White Texture Coat	
Client No.:	S-03D		1st Floor Corridor	
<u>% Asbestos</u>	<u>Type</u>	<u>% Non-Asbestos Fibrous Material</u>	<u>Type</u>	<u>% Non-Fibrous Material</u>
None Detected	None Detected	None Detected	None Detected	100

Accreditation **NIST-NVLAP No. 101165-0** **NY-DOH No. 11021** **AIHA-LAP, LLC No. 100188**

*This confidential report relates only to those item(s) tested and does not represent an endorsement by NIST-NVLAP, AIHA or any agency of the U.S. government
 This report shall not be reproduced except in full, without written approval of the laboratory.*

Analytical Method: US EPA 600/R-93/116 by Polarized Light Microscopy, (ELAP 198.1 where applicable)

Comments: Quantification at <0.25% by volume is possible with this method. (PC) Indicates Stratified Point Count Method performed. (PC-Trace) means that asbestos was detected but is not quantifiable under the Point Counting regimen. Analysis includes all distinct separable layers in accordance with EPA 600 Method. If not reported or otherwise noted, layer is either not present or the client has specifically requested that it not be analyzed (ex. analyze until positive instructions). Small asbestos fibers may be missed by PLM due to resolution limitations of the optical microscope. Therefore, PLM is not consistently reliable in detecting asbestos in non-friable organically bound (NOB) materials. Quantitative transmission electron microscopy (TEM) is currently the only method that can pronounce materials as non-asbestos containing.

Analysis Performed By: M. Mirza

Date: 11/14/2014



9000 Commerce Parkway, Ste B
 Mount Laurel, NJ 08054
 Toll Free 877-428-4285
 Local: 856-231-9449
 Fax: 856-231-9818

CERTIFICATE OF ANALYSIS

Client:	Maple Environmental, Inc.	Report Date:	11/14/2014
	482 S.Service Rd East,Ste116	Report No.:	350124
	Oakville, ON L6J 2X6	Project:	Oakville Town Hall
		Project No.:	14478

BULK SAMPLE ANALYSIS SUMMARY

Lab No.:	5477148	Description / Location:	Tan Floor Tile; 12x12	
Client No.:	S-04A		Print Shop Corridor	
<u>% Asbestos</u>	<u>Type</u>	<u>% Non-Asbestos Fibrous Material</u>	<u>Type</u>	<u>% Non-Fibrous Material</u>
None Detected	None Detected	None Detected	None Detected	100

Lab No.:	5477148	Description / Location:	Black Mastic	Layer No.: 2
Client No.:	S-04A		Print Shop Corridor	
<u>% Asbestos</u>	<u>Type</u>	<u>% Non-Asbestos Fibrous Material</u>	<u>Type</u>	<u>% Non-Fibrous Material</u>
None Detected	None Detected	None Detected	None Detected	100

Lab No.:	5477149	Description / Location:	Tan Floor Tile; 12x12	
Client No.:	S-04B		Print Shop Corridor	
<u>% Asbestos</u>	<u>Type</u>	<u>% Non-Asbestos Fibrous Material</u>	<u>Type</u>	<u>% Non-Fibrous Material</u>
None Detected	None Detected	None Detected	None Detected	100

Lab No.:	5477149	Description / Location:	Black Mastic	Layer No.: 2
Client No.:	S-04B		Print Shop Corridor	
<u>% Asbestos</u>	<u>Type</u>	<u>% Non-Asbestos Fibrous Material</u>	<u>Type</u>	<u>% Non-Fibrous Material</u>
None Detected	None Detected	None Detected	None Detected	100

Accreditation **NIST-NVLAP No. 101165-0** **NY-DOH No. 11021** **AIHA-LAP, LLC No. 100188**

*This confidential report relates only to those item(s) tested and does not represent an endorsement by NIST-NVLAP, AIHA or any agency of the U.S. government
 This report shall not be reproduced except in full, without written approval of the laboratory.*

Analytical Method: US EPA 600/R-93/116 by Polarized Light Microscopy, (ELAP 198.1 where applicable)

Comments: Quantification at <0.25% by volume is possible with this method. (PC) Indicates Stratified Point Count Method performed. (PC-Trace) means that asbestos was detected but is not quantifiable under the Point Counting regimen. Analysis includes all distinct separable layers in accordance with EPA 600 Method. If not reported or otherwise noted, layer is either not present or the client has specifically requested that it not be analyzed (ex. analyze until positive instructions). Small asbestos fibers may be missed by PLM due to resolution limitations of the optical microscope. Therefore, PLM is not consistently reliable in detecting asbestos in non-friable organically bound (NOB) materials. Quantitative transmission electron microscopy (TEM) is currently the only method that can pronounce materials as non-asbestos containing.

Analysis Performed By: M. Mirza

Date: 11/14/2014



9000 Commerce Parkway, Ste B
 Mount Laurel, NJ 08054
 Toll Free 877-428-4285
 Local: 856-231-9449
 Fax: 856-231-9818

CERTIFICATE OF ANALYSIS

Client:	Maple Environmental, Inc.	Report Date:	11/14/2014
	482 S.Service Rd East,Ste116	Report No.:	350124
	Oakville, ON L6J 2X6	Project:	Oakville Town Hall
		Project No.:	14478

BULK SAMPLE ANALYSIS SUMMARY

Lab No.:	5477150	Description / Location:	Tan Floor Tile; 12x12	
Client No.:	S-04C		Print Shop Corridor	
<u>% Asbestos</u>	<u>Type</u>	<u>% Non-Asbestos Fibrous Material</u>	<u>Type</u>	<u>% Non-Fibrous Material</u>
None Detected	None Detected	None Detected	None Detected	100

Lab No.:	5477150	Description / Location:	Black Mastic	Layer No.: 2
Client No.:	S-04C		Print Shop Corridor	
<u>% Asbestos</u>	<u>Type</u>	<u>% Non-Asbestos Fibrous Material</u>	<u>Type</u>	<u>% Non-Fibrous Material</u>
None Detected	None Detected	None Detected	None Detected	100

Lab No.:	5477151	Description / Location:	Tan Floor Tile; 12x12	
Client No.:	S-05A		Maintenance Office Corridor	
<u>% Asbestos</u>	<u>Type</u>	<u>% Non-Asbestos Fibrous Material</u>	<u>Type</u>	<u>% Non-Fibrous Material</u>
None Detected	None Detected	None Detected	None Detected	100

Accreditation **NIST-NVLAP No. 101165-0** **NY-DOH No. 11021** **AIHA-LAP, LLC No. 100188**

*This confidential report relates only to those item(s) tested and does not represent an endorsement by NIST-NVLAP, AIHA or any agency of the U.S. government
 This report shall not be reproduced except in full, without written approval of the laboratory.*

Analytical Method: US EPA 600/R-93/116 by Polarized Light Microscopy, (ELAP 198.1 where applicable)

Comments: Quantification at <0.25% by volume is possible with this method. (PC) Indicates Stratified Point Count Method performed. (PC-Trace) means that asbestos was detected but is not quantifiable under the Point Counting regimen. Analysis includes all distinct separable layers in accordance with EPA 600 Method. If not reported or otherwise noted, layer is either not present or the client has specifically requested that it not be analyzed (ex. analyze until positive instructions). Small asbestos fibers may be missed by PLM due to resolution limitations of the optical microscope. Therefore, PLM is not consistently reliable in detecting asbestos in non-friable organically bound (NOB) materials. Quantitative transmission electron microscopy (TEM) is currently the only method that can pronounce materials as non-asbestos containing.

Analysis Performed By: M. Mirza

Date: 11/14/2014



9000 Commerce Parkway, Ste B
 Mount Laurel, NJ 08054
 Toll Free 877-428-4285
 Local: 856-231-9449
 Fax: 856-231-9818

CERTIFICATE OF ANALYSIS

Client:	Maple Environmental, Inc.	Report Date:	11/14/2014
	482 S.Service Rd East,Ste116	Report No.:	350124
	Oakville, ON L6J 2X6	Project:	Oakville Town Hall
		Project No.:	14478

BULK SAMPLE ANALYSIS SUMMARY

Lab No.:	5477152	Description / Location:	Tan Floor Tile; 12x12	
Client No.:	S-05B		Maintenance Office Corridor	
<u>% Asbestos</u>	<u>Type</u>	<u>% Non-Asbestos Fibrous Material</u>	<u>Type</u>	<u>% Non-Fibrous Material</u>
None Detected	None Detected	None Detected	None Detected	100

Lab No.:	5477152	Description / Location:	Black Mastic	Layer No.: 2
Client No.:	S-05B		Maintenance Office Corridor	
<u>% Asbestos</u>	<u>Type</u>	<u>% Non-Asbestos Fibrous Material</u>	<u>Type</u>	<u>% Non-Fibrous Material</u>
None Detected	None Detected	None Detected	None Detected	100

Lab No.:	5477153	Description / Location:	Tan Floor Tile; 12x12	
Client No.:	S-05C		Maintenance Office Corridor	
<u>% Asbestos</u>	<u>Type</u>	<u>% Non-Asbestos Fibrous Material</u>	<u>Type</u>	<u>% Non-Fibrous Material</u>
None Detected	None Detected	None Detected	None Detected	100

Lab No.:	5477153	Description / Location:	Black Mastic	Layer No.: 2
Client No.:	S-05C		Maintenance Office Corridor	
<u>% Asbestos</u>	<u>Type</u>	<u>% Non-Asbestos Fibrous Material</u>	<u>Type</u>	<u>% Non-Fibrous Material</u>
None Detected	None Detected	None Detected	None Detected	100

Accreditation **NIST-NVLAP No. 101165-0** **NY-DOH No. 11021** **AIHA-LAP, LLC No. 100188**

*This confidential report relates only to those item(s) tested and does not represent an endorsement by NIST-NVLAP, AIHA or any agency of the U.S. government
 This report shall not be reproduced except in full, without written approval of the laboratory.*

Analytical Method: US EPA 600/R-93/116 by Polarized Light Microscopy, (ELAP 198.1 where applicable)

Comments: Quantification at <0.25% by volume is possible with this method. (PC) Indicates Stratified Point Count Method performed. (PC-Trace) means that asbestos was detected but is not quantifiable under the Point Counting regimen. Analysis includes all distinct separable layers in accordance with EPA 600 Method. If not reported or otherwise noted, layer is either not present or the client has specifically requested that it not be analyzed (ex. analyze until positive instructions). Small asbestos fibers may be missed by PLM due to resolution limitations of the optical microscope. Therefore, PLM is not consistently reliable in detecting asbestos in non-friable organically bound (NOB) materials. Quantitative transmission electron microscopy (TEM) is currently the only method that can pronounce materials as non-asbestos containing.

Analysis Performed By: M. Mirza

Date: 11/14/2014

APPENDIX II

LABORATORY ANALYSIS REPORTS – LEAD
(CHRONOLOGICAL ORDER)

CERTIFICATE OF ANALYSIS

Client:	MAPLE Environmental, Inc.	Report Date:	9/18/2012
	2380 Wycroft Rd, Suite 2B	Report Number:	285667
	Oakville, ON L6L 6W1	Project:	Work Area "A"; Sept14,2012
		Project No.:	13210

LEAD PAINT SAMPLE ANALYSIS SUMMARY

<u>Lab No.</u>	<u>Client No.</u>	<u>Location / Description</u>	<u>Concentration Lead By Weight (%)</u>
4788195	Pb-01	Beige Paint Loc. 1 - Kitchen (Wall)	0.089

Accreditations:**NATIONAL LEAD LABORATORY ACCREDITATION PROGRAM (NLLAP)**

AIHA-LAP, LLC No. 100188

NYSDOH-ELAP No. 11021

Analytical Methods: ASTM D3335-85A "Standard Method To Test For Low Concentrations Of Lead In Paint By Atomic Absorption Spectrophotometry"
EPA SW846-(3050B:7000B) "Standard Method To Test For Low Concentrations Of Lead In Soils, Sludges and Sediments By AAS"

Comments: Regulatory limit is 0.5% lead by weight (EPA/HUD guidelines). Recommend multiple sampling for all samples less than regulatory limit for confirmation. All results are based on the samples as received at the lab. IATL assumes that appropriate sampling methods have been used and the data upon which these results are based have been accurately supplied by the client. Method Detection Limit (MDL) per EPA Method 40CFR Part 136 Appendix B. Reporting Limit (RL) based upon Lowest Standard Determined (LSD) in accordance with AIHA-ELLAP policies. LSD=0.2 ppm MDL=0.0044% by weight. RL= 0.010% by weight (based upon 100 mg sampled). * Insufficient sample provided to perform QC reanalysis (<200 mg) ** Not enough sample provided to analyze (<50 mg) *** Matrix / substrate interference possible. Sample results are not corrected for contamination by field or analytical blanks. This confidential report relates only to those item(s) tested and does not represent an endorsement by NIST-NVLAP, AIHA or any government agency. This report shall not be reproduced except in full, without written approval of the laboratory.

Date Received: 9/17/2012**Date Analyzed:** 9/18/2012**Analyst:** C. Shaffer**Approved By:** _____Frank E. Ehrenfeld, III
Laboratory Director

CERTIFICATE OF ANALYSIS

Client:	MAPLE Environmental, Inc. 2380 Wycroft Rd, Suite 2B Oakville, ON L6L 6W1	Report Date:	9/28/2012
		Report Number:	286498
		Project:	Work Area "B"; Sept21,2012
		Project No.:	13210-Oakville

LEAD PAINT SAMPLE ANALYSIS SUMMARY

<u>Lab No.</u>	<u>Client No.</u>	<u>Location / Description</u>	<u>Concentration Lead By Weight (%)</u>
4798013	Pb-01	White Paint Loc. 1 (Wall)	0.018
4798014	Pb-02	Brown Paint Loc. 2 (Exterior Door)	<0.0088
4798015	Pb-03	Mortar Loc. 2 (Exterior Wall)	<0.0076***
4798016	Pb-04	White Paint Loc. 2 (Wall)	<0.0090
4798017	Pb-05	Pink Paint Loc. 6 (Radiator)	<0.017*
4798018	Pb-06	Beige Paint Loc. 10 (Radiator)	<0.0083
4798019	Pb-07	Mortar Loc. 27 (Exterior Wall)	<0.0069

Accreditations: **NATIONAL LEAD LABORATORY ACCREDITATION PROGRAM (NLLAP)**
AIHA-LAP, LLC No. 100188 NYSDOH-ELAP No. 11021

Analytical Methods: ASTM D3335-85A "Standard Method To Test For Low Concentrations Of Lead In Paint By Atomic Absorption Spectrophotometry"
 EPA SW846-(3050B;7000B) "Standard Method To Test For Low Concentrations Of Lead In Soils, Sludges and Sediments By AAS"

Comments: Regulatory limit is 0.5% lead by weight (EPA/HUD guidelines). Recommend multiple sampling for all samples less than regulatory limit for confirmation. All results are based on the samples as received at the lab. IATL assumes that appropriate sampling methods have been used and the data upon which these results are based have been accurately supplied by the client. Method Detection Limit (MDL) per EPA Method 40CFR Part 136 Appendix B. Reporting Limit (RL) based upon Lowest Standard Determined (LSD) in accordance with AIHA-ELLAP policies. LSD=0.2 ppm MDL=0.0044% by weight. RL= 0.010% by weight (based upon 100 mg sampled). * Insufficient sample provided to perform QC reanalysis (<200 mg) ** Not enough sample provided to analyze (<50 mg) *** Matrix / substrate interference possible. Sample results are not corrected for contamination by field or analytical blanks. This confidential report relates only to those item(s) tested and does not represent an endorsement by NIST-NVLAP, AIHA or any government agency. This report shall not be reproduced except in full, without written approval of the laboratory.

Date Received: 9/25/2012
Date Analyzed: 9/28/2012
Analyst: M. Stewart

Approved By: _____
 Frank E. Ehrenfeld, III
 Laboratory Director

CERTIFICATE OF ANALYSIS

Client:	Maple Environmental, Inc. 482 S.Service Rd East,Ste116 Oakville, ON L6J 2X6	Report Date:	5/2/2014
		Report Number:	332532
		Project:	TwnOfOakville-TwnHallWashrm
		Project No.:	14293

LEAD PAINT SAMPLE ANALYSIS SUMMARY

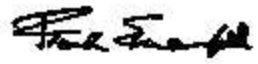
<u>Lab No.</u>	<u>Client No.</u>	<u>Location / Description</u>	<u>Concentration Lead By Weight (%)</u>
5298668	L-01	Dk Beige Wall Paint Lower Flr; Men's Washroom	0.10
5298669	L-02	Beige Ceiling Paint Upper Flr; Women's Washroom	0.23
5298670	L-03	Yellow Ceiling Paint Upper Flr; Women's Washroom	0.22

Accreditations: **NATIONAL LEAD LABORATORY ACCREDITATION PROGRAM (NLLAP)**
AIHA-LAP, LLC No. 100188 NYSDOH-ELAP No. 11021

Analytical Methods: ASTM D3335-85A "Standard Method To Test For Low Concentrations Of Lead In Paint By Atomic Absorption Spectrophotometry"
EPA SW846-(3050B:7000B) "Standard Method To Test For Low Concentrations Of Lead In Soils, Sludges and Sediments By AAS"

Comments: Regulatory limit is 0.5% lead by weight (EPA/HUD guidelines). Recommend multiple sampling for all samples less than regulatory limit for confirmation. All results are based on the samples as received at the lab. IATL assumes that appropriate sampling methods have been used and the data upon which these results are based have been accurately supplied by the client. Method Detection Limit (MDL) per EPA Method 40CFR Part 136 Appendix B. Reporting Limit (RL) based upon Lowest Standard Determined (LSD) in accordance with AIHA-ELLAP policies. LSD=0.2 ppm MDL=0.0044% by weight. RL= 0.010% by weight (based upon 100 mg sampled). * Insufficient sample provided to perform QC reanalysis (<200 mg) ** Not enough sample provided to analyze (<50 mg) *** Matrix / substrate interference possible. Sample results are not corrected for contamination by field or analytical blanks. This confidential report relates only to those item(s) tested and does not represent an endorsement by NIST-NVLAP, AIHA or any government agency. This report shall not be reproduced except in full, without written approval of the laboratory.

Date Received: 4/28/2014
Date Analyzed: 5/2/2014
Analyst: C. Shaffer

Approved By: 
Frank E. Ehrenfeld, III
Laboratory Director



9000 Commerce Parkway, Suite B
 Mount Laurel, NJ 08054
 Toll Free 877-428-4285
 Local: 856-231-9449
 Fax: 856-231-9818

CERTIFICATE OF ANALYSIS

Client: Maple Environmental, Inc.
 482 S.Service Rd East,Ste116
 Oakville, ON L6J 2X6

Report Date: 11/13/2014
Report Number: 350132
Project: Oakville Town Hall
Project No.: 14478

LEAD PAINT SAMPLE ANALYSIS SUMMARY

<u>Lab No.</u>	<u>Client No.</u>	<u>Location / Description</u>	<u>Concentration Lead By Weight (%)</u>
5475328	L01	White Paint Corridor (Ceiling)	0.0077
5475329	L02	Beige Paint Stairwell (Wall)	0.26

Accreditations: **NATIONAL LEAD LABORATORY ACCREDITATION PROGRAM (NLLAP)**
AIHA-LAP, LLC No. 100188 NYSDOH-ELAP No. 11021

Analytical Methods: ASTM D3335-85A "Standard Method To Test For Low Concentrations Of Lead In Paint By Atomic Absorption Spectrophotometry"
 EPA SW846-(3050B:7000B) "Standard Method To Test For Low Concentrations Of Lead In Soils, Sludges and Sediments By AAS"

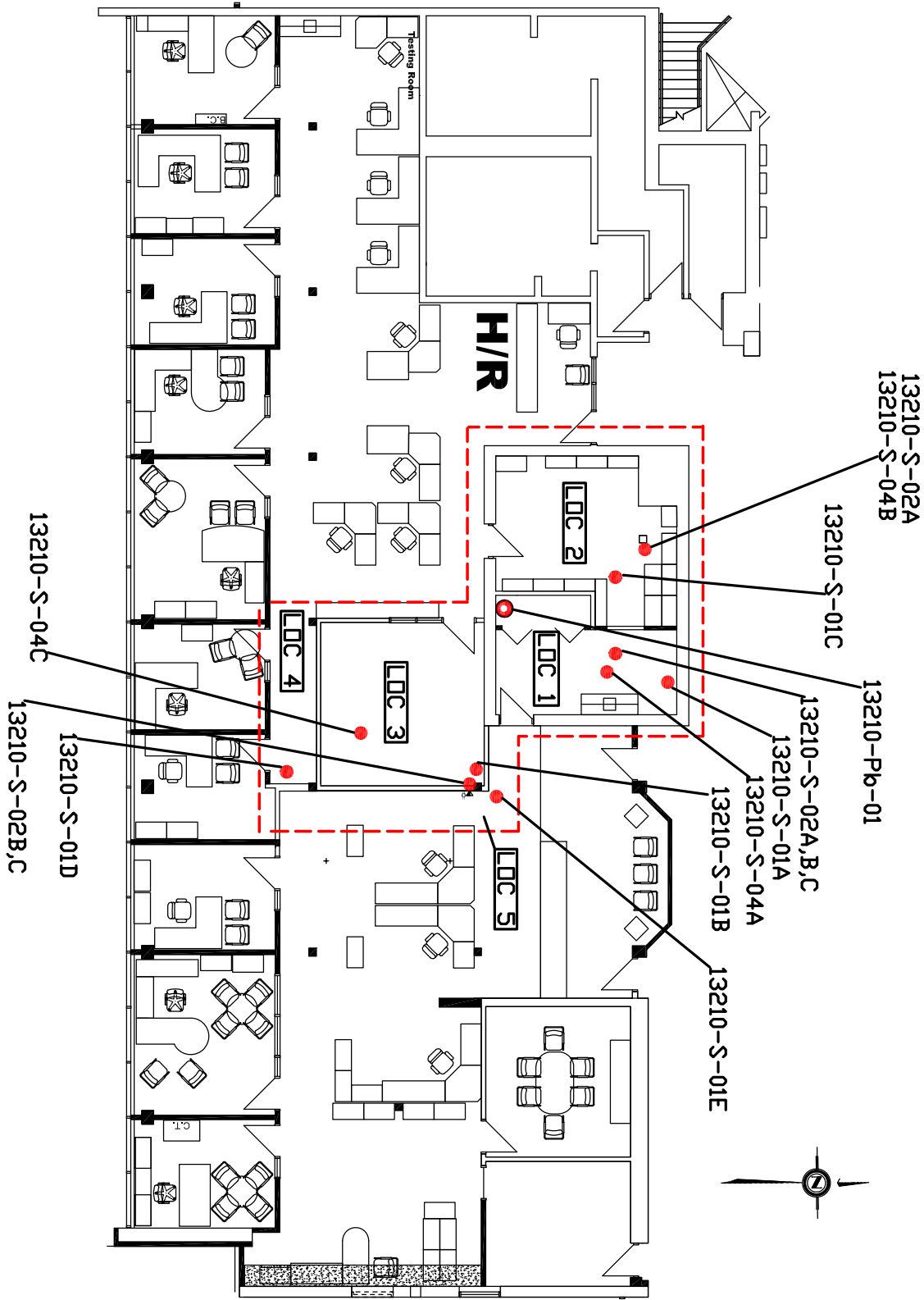
Comments: Regulatory limit is 0.5% lead by weight (EPA/HUD guidelines). Recommend multiple sampling for all samples less than regulatory limit for confirmation. All results are based on the samples as received at the lab. IATL assumes that appropriate sampling methods have been used and the data upon which these results are based have been accurately supplied by the client. Method Detection Limit (MDL) per EPA Method 40CFR Part 136 Appendix B. Reporting Limit (RL) based upon Lowest Standard Determined (LSD) in accordance with AIHA-ELLAP policies. LSD=0.2 ppm MDL=0.0044% by weight. RL= 0.010% by weight (based upon 100 mg sampled). * Insufficient sample provided to perform QC reanalysis (<200 mg) ** Not enough sample provided to analyze (<50 mg) *** Matrix / substrate interference possible. Sample results are not corrected for contamination by field or analytical blanks. This confidential report relates only to those item(s) tested and does not represent an endorsement by NIST-NVLAP, AIHA or any government agency. This report shall not be reproduced except in full, without written approval of the laboratory.

Date Received: 11/10/2014
Date Analyzed: 11/13/2014
Analyst: C. Shaffer

Approved By:

Frank E. Ehrenfeld, III
 Laboratory Director

APPENDIX III
DRAWINGS
(CHRONOLOGICAL ORDER)



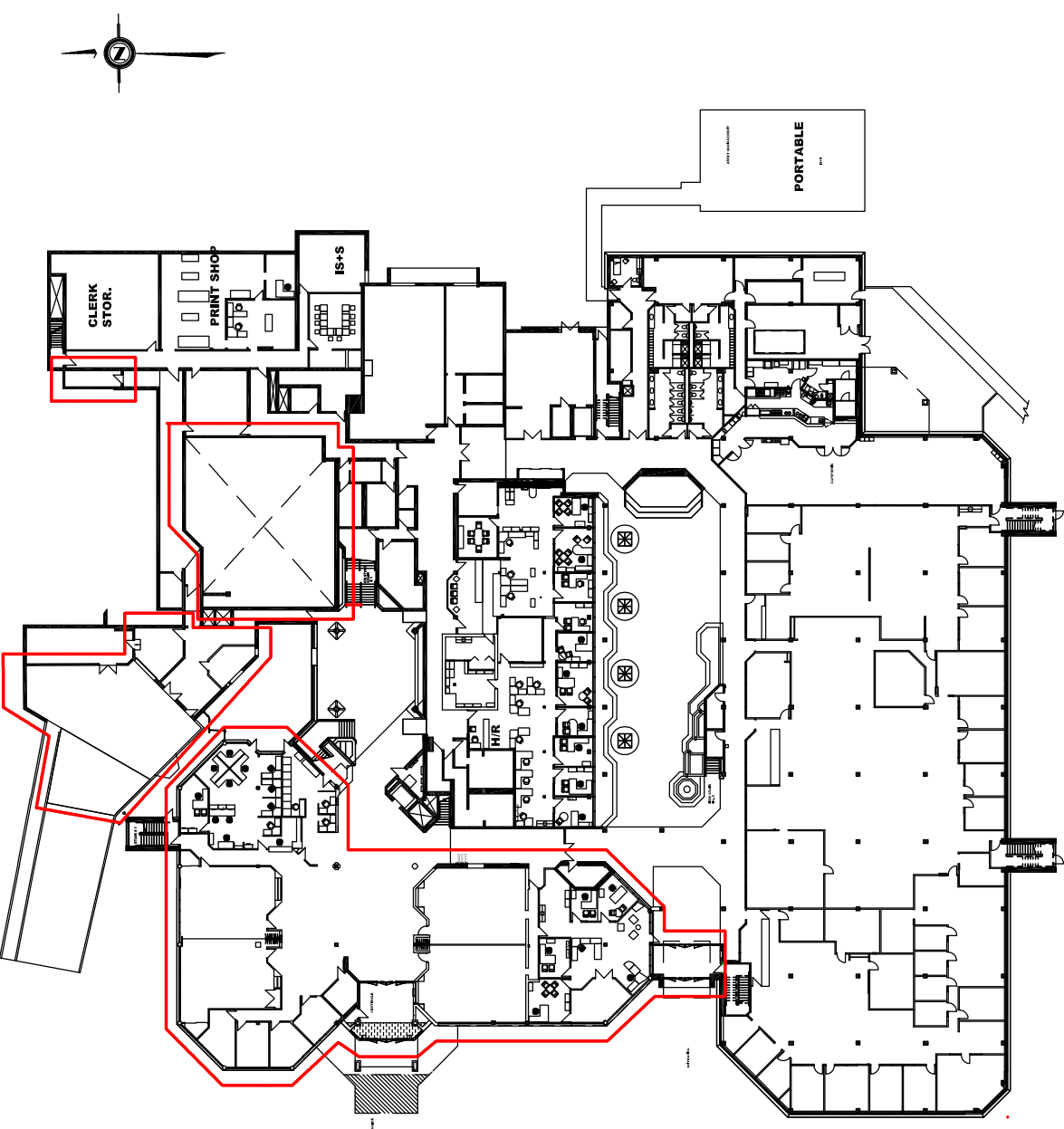
MAPLE ENVIRONMENTAL INC.
 Environmental Remediation & Safety Consultants
 2000 Highway 10, Suite 201, Oakville, Ontario L6L 6K7
 Tel: 905.335.1111
 Fax: 905.335.1112
 www.mapleenv.com


LEGEND	
LOC #	
BULK SAMPLES SAMPLE	●
BULK POINTS SAMPLE	●
WORK AREA	- - -

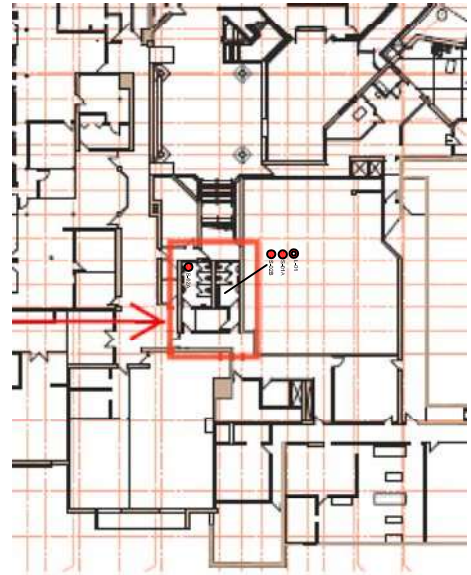
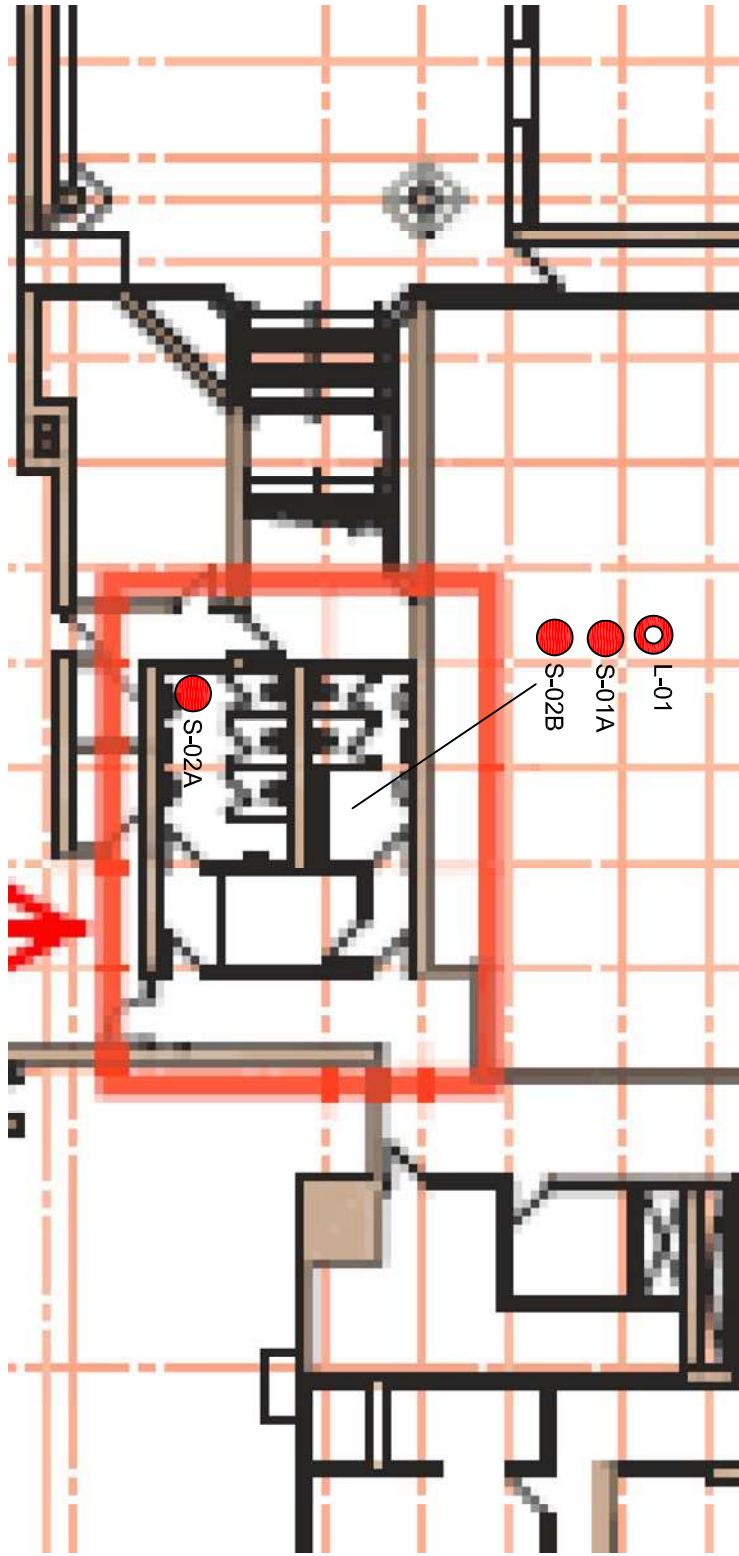
Drawn By	Checked By	Date of Revision

DESIGNATED SUBSTANCE SURVEY
 Town of Oakville
 1225 Trafalgar Road, Oakville
 WORK AREA "A"

Project No. 13210	Phase
Date: SEPT/20/2012	DS-02-02
Scale: NTS	



 <p>MAPLE ENVIRONMENTAL INC. <small>AN ENVIRONMENTAL HEALTH & SAFETY CONSULTING FIRM</small> 2385 Highway 10, Oakville, Ontario L6M 4K4 Phone: 905.335.7777 Fax: 905.335.7778 Email: info@mapleenv.com</p>	<p>LEGEND</p> <p>— WORK AREA "B"</p>				
<p>DESIGNATED SUBSTANCE SURVEY (WORK AREA "B") Town of Oakville 1225 Trafalgar Road, Oakville Ground Floor Plan</p>					
<p>Project No. 13210</p>				<p>Sheet DS-01-02</p>	
<p>Date OCT/4/2012</p>				<p>Scale NTS</p>	





MAPLE ENVIRONMENTAL INC.

 ENVIRONMENTAL HEALTH & SAFETY CONSULTANTS

 422 South Service Road E., Suite 115 • Oakville, Ontario L6K 2R6

 Tel: 905.335.1111

 Fax: 905.335.1112

 www.MapleEnvironmental.com

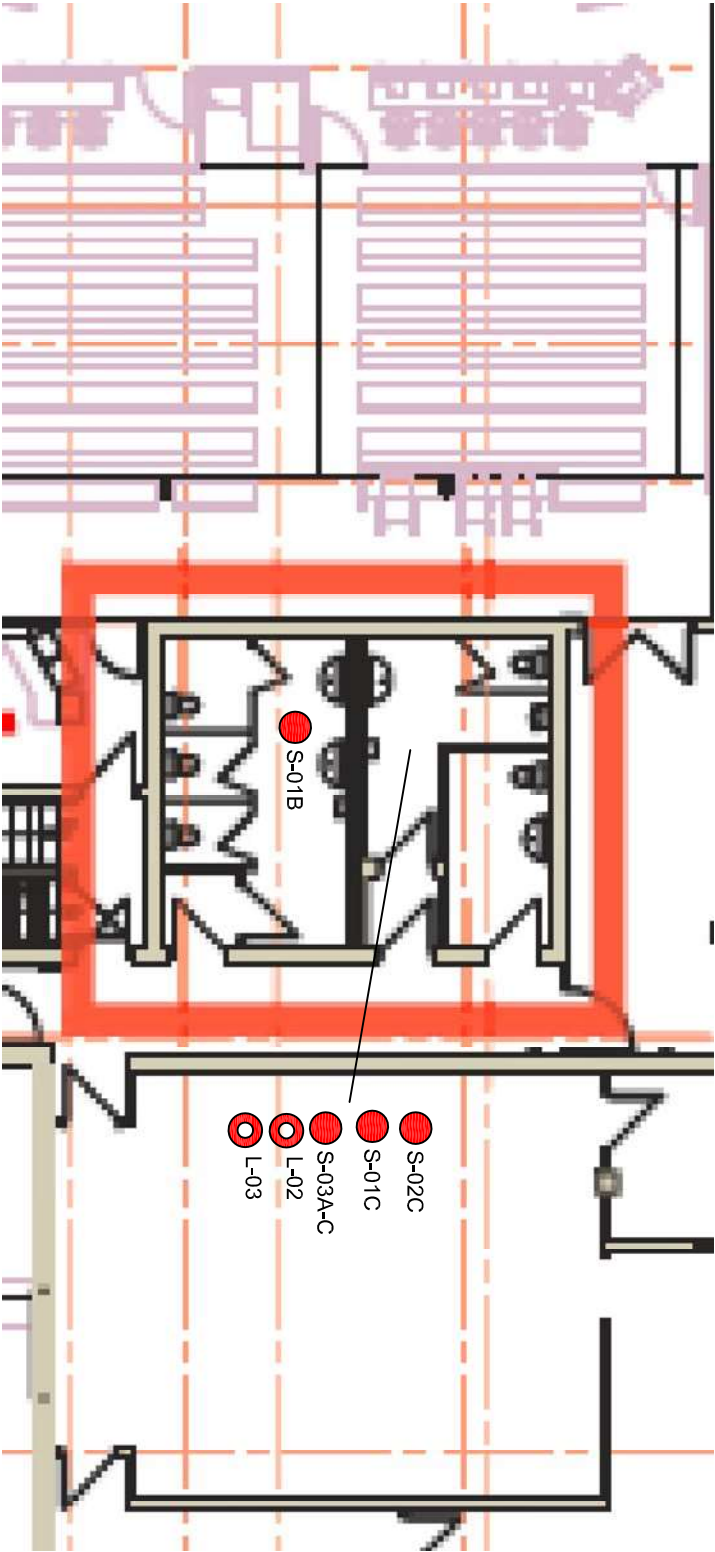
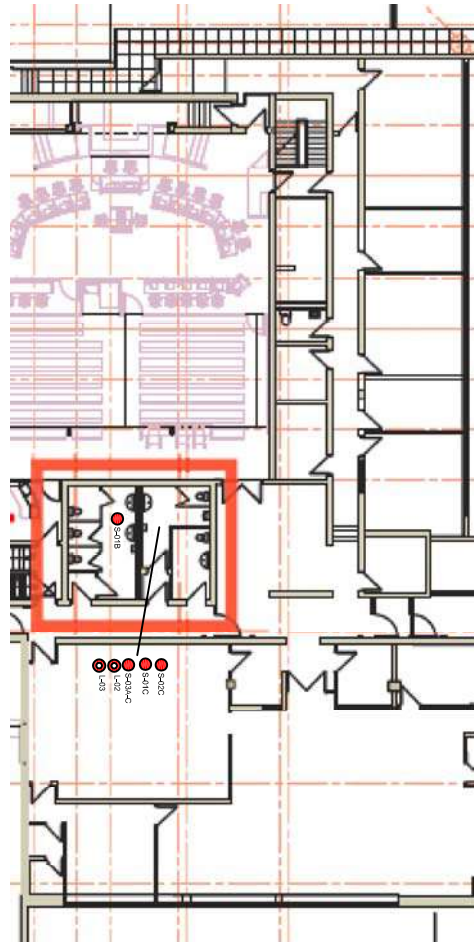
BULK ASPBESTOS SAMPLE		●
14293 S-XXX		
BULK PAINT SAMPLE		○
14293 L-XX		


SYMBOL	DESCRIPTION
□	SURVEY AREA
CONFIRMED ACM	

Assessment Consultant Maples is an Assessor in the
 Province of Ontario. All work is performed in accordance with the
 and/or floors with no access above ceiling.
 For Detailed Information as to location, Type,
 Quantity, Condition and Access to ACM, Please Refer
 to the Room-by-Room Sheet Provided in Appendix III
 of this Report.
 Drawn By: Ched Siv: OAKVILLE TOWN HALL
 M. Gibbs K. Prosser 1225 Trafalgar Rd, Oakville
 Lower Floor

**LIMITED DESIGNATED
 SUBSTANCE
 SURVEY**
 Oakville Town Hall
 Lower Floor

Project No:	14293	Date:	MAY/2014
Scale:	NTS	Sheet:	05-01-02





MAPLE ENVIRONMENTAL INC.

ENVIRONMENTAL HEALTH & SAFETY CONSULTANTS

 422 South Service Rd. E., Unit 116 • Oakville, Ontario L6A 2R6

 Tel: 905.335.1111

 Fax: 905.335.1112

 www.MapleEnvironmental.com

BULK ASPBESTOS SAMPLE 14293 S-XXX	●
BULK PAINT SAMPLE 14293 L-XX	○
WORK AREA	□

CONFIRMED ACM	
SYMBOL	DESCRIPTION
□	SURVEY AREA

Assessment Contingency Materials are assumed to be Present Above Ceiling with Rooms with No Access and/or Rooms with No Access Above Ceiling.

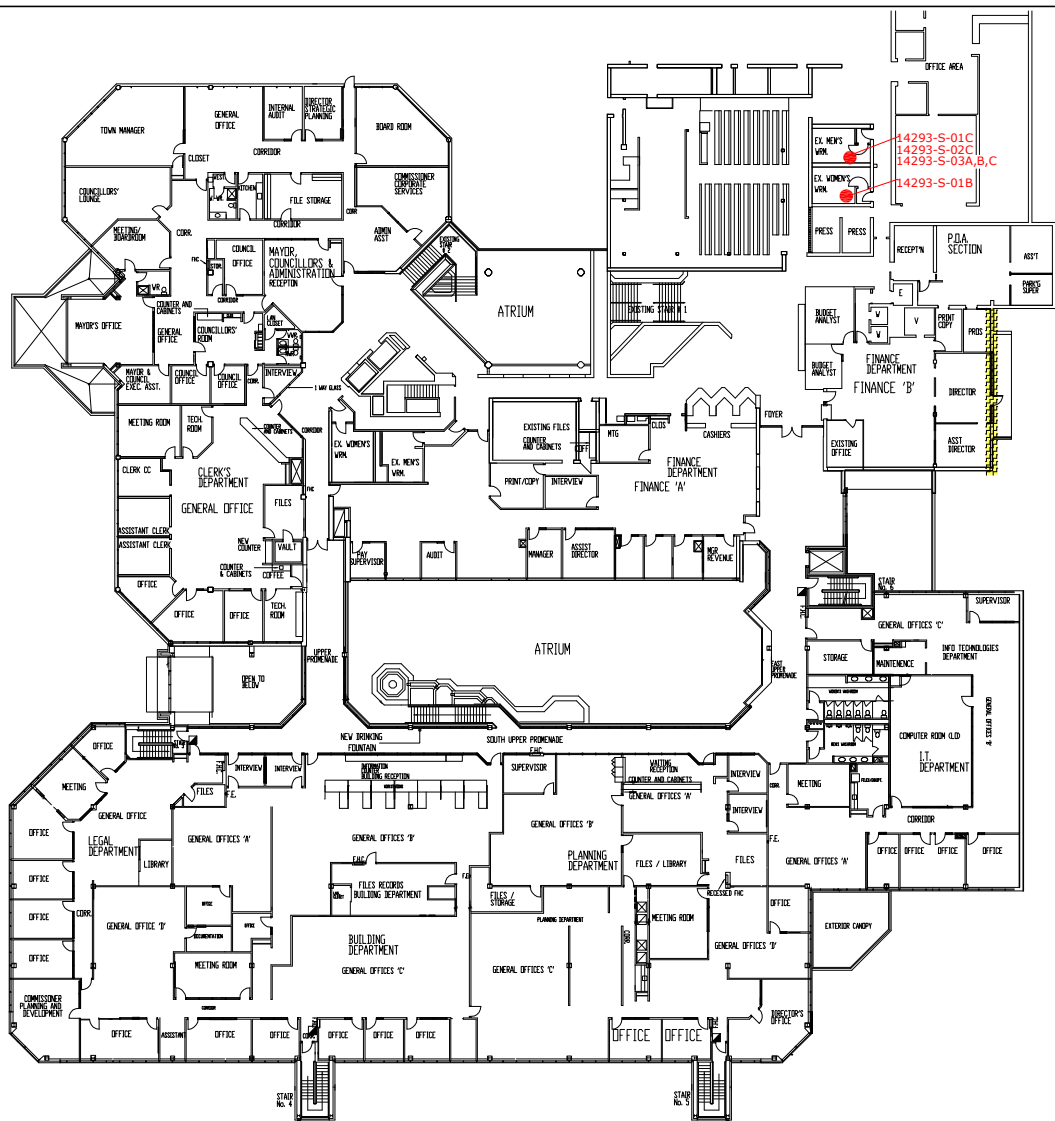
 For Detailed Information as to Location, Type, Quantity, Condition and Access to ACM, Please Refer to the Remediation Sheet Provided in Appendix III of this Report.

LIMITED DESIGNATED SUBSTANCE SURVEY

 Oakville Town Hall

 Upper Floor

Project No:	14293	Date:	MAY/2014	Scale:	05-02-02
Drawn By:	M. Gibbs	Checked By:	K. Prosser	Scale:	NTS



MAPLE ENVIRONMENTAL INC.
 ENVIRONMENTAL HEALTH & SAFETY CONSULTANTS
 482 South Service Road East - Suite 118
 Oakville, Ontario L6L 2G9
 Tel: 905 237 4408 - Fax: 905 297 8865
 www.MapleEnvironmental.com
 OAKVILLE, COLLINGWOOD

BULK ASBESTOS SAMPLE #:## ●

CONFIRMED ACM

SYMBOL	DESCRIPTION
	MECHANICAL INSULATION
	TRANSITE CEMENT BOARD
	SPRAYED FIRE PROOFING

NO ACCESS INTO ROOM

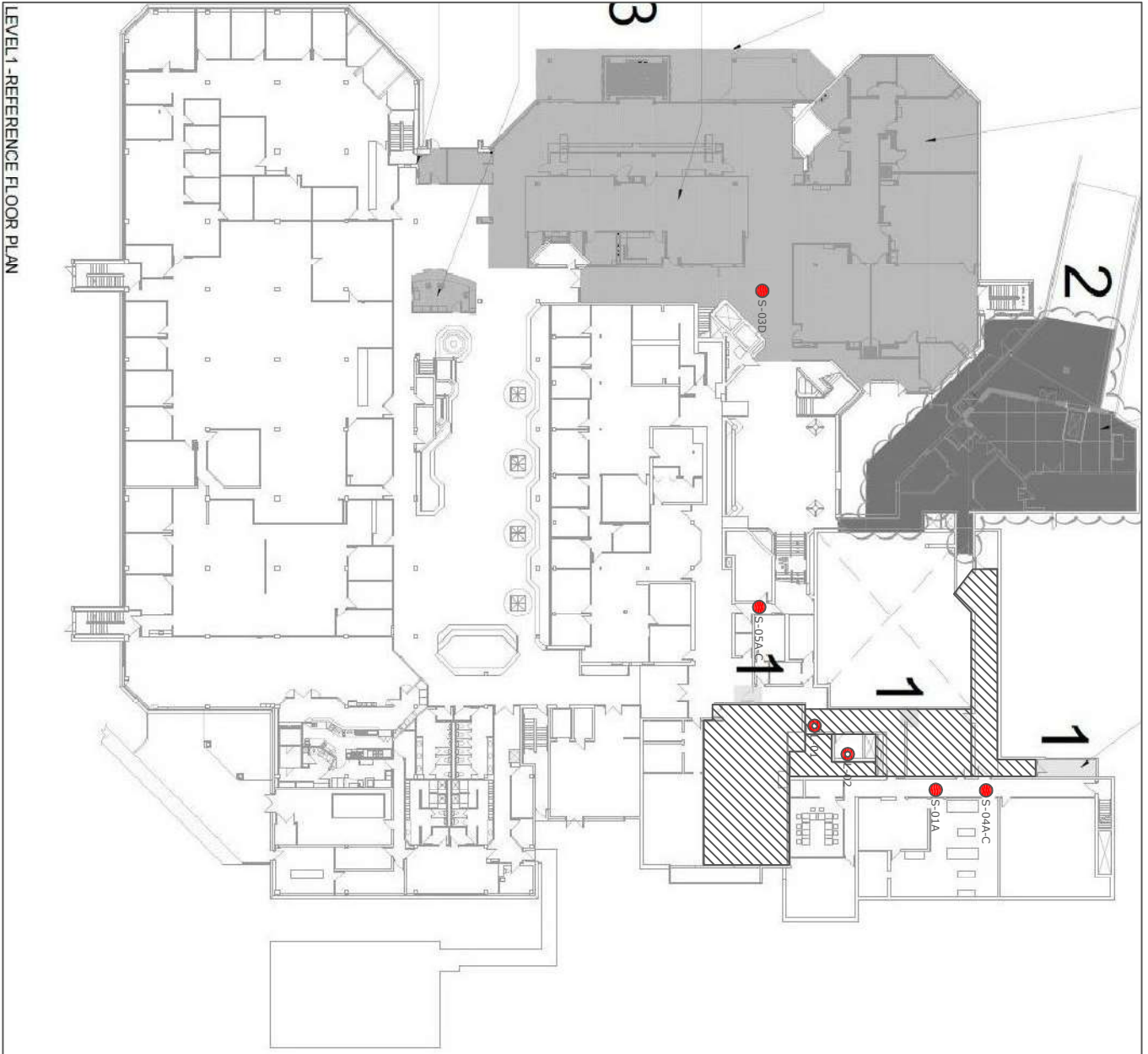
Asbestos Containing Materials are Assumed to be Present within Rooms with No Access Above Ceiling.



Drawn By: E. Skinner
 Check By: K. Prosser
 Oakville Municipal Office
 1225 Trafalgar Rd.
 Second Floor

ASBESTOS REASSESSMENT SURVEY
 Oakville Municipal Office
 1225 Trafalgar Road
 Second Floor

Project No. 14251	Sheet DS-02-02
Date: JULY/2014	
Scale: NTS	



BULK ASBESTOS SAMPLE 14478-09-S-XXX	
BULK PAINT SAMPLE 14478-09-L-XX	
CONFIRMED ACM	

	MECHANICAL INSULATION
	SPRAYED FIREPROOFING
	TRANSITE

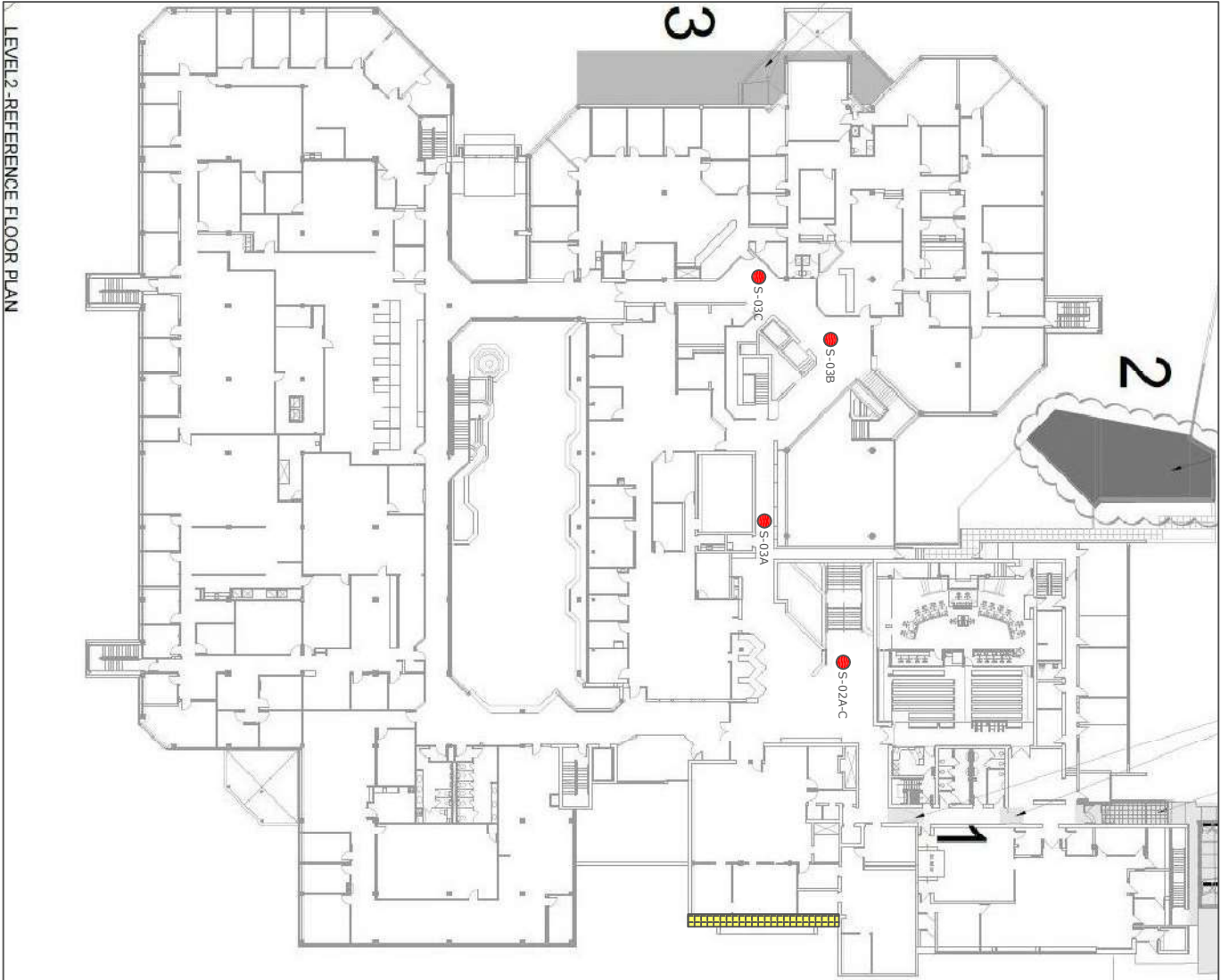
NO ACCESS INTO ROOM

Tabulated Containing Materials are Assumed to be Present Above Ceiling within Rooms with No Access and/or Rooms with No Access Above Ceiling.

Drawn By: M. Gibbs	Checked By: B. Palmer	Customer: Oakville Town Hall 1225 Trafalgar Road, Oakville, Ontario
-----------------------	--------------------------	--

DESIGNATED SUBSTANCE SURVEY
Oakville
Town Hall
Ground Floor

Project No. 14478-09	Issue DECEMBER/2014	Revision DS-01-02
NTS		



BULK ASBESTOS SAMPLE 14478-09-S-XXX	
BULK PAINT SAMPLE 14478-09-L-XX	
CONFIRMED ACM	

	MECHANICAL INSULATION
	SPRAYED FIREPROOFING
	TRANSITE

	NO ACCESS INTO ROOM
<p>Indicated Containing Materials are Assumed to be Present Above Ceiling within Rooms with No Access and/or Rooms with No Access Above Ceiling.</p>	

Drawn By: M. Gibbs	Checked By: B. Palmer	Customer: Oakville Town Hall 1225 Trafalgar Road, Oakville, Ontario
-----------------------	--------------------------	--

DESIGNATED SUBSTANCE SURVEY
Oakville
Town Hall
2nd Floor

Project No. 14478-09	Issue 05-02-02
Date DECEMBER/2014	Scale NTS

APPENDIX IV
ASBESTOS INVENTORY

Table 13 – Inventory of Asbestos-containing Materials within the Building

Room Name	Floor	Building System	Description	Quantity	Condition
Exterior	2	Soffit	Transite	500 SF	Good
Exterior	2	Spray Insulation	Fireproofing	500 SF	Good
Tunnel	1	Fittings	Parging Cement Insulation	30 Units	Good
Storage Off Tunnel	1	Fittings	Parging Cement Insulation	12 Units	Good
Corridor	1	Fittings	Parging Cement Insulation	8 Units	Good
Storage Off Stair	1	Fittings	Parging Cement Insulation	4 Units	Good
Mechanical Room	1	Fittings	Parging Cement	2 Units	Fair