

**NOTES**

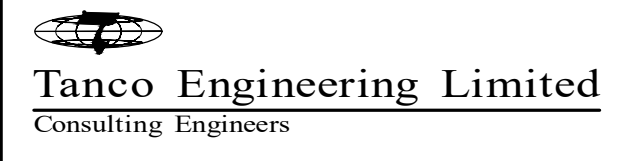
- 1 ALL CONSTRUCTION WORK IN THE BUILDING MUST BE CARRIED OUT IN STRICT ACCORDANCE WITH OWNER'S RULES & REGULATIONS AND BE CLEARED THROUGH FACILITIES MANAGEMENT.
- 2 AT THE END OF PROJECT, WIPE CLEAN ALL LIGHTING FIXTURES' LENSES & FRAMES IN RENOVATED SPACE.
- 3 SEE PANEL, SCHEDULE DETAIL, PROVIDE TYPED WRITTEN DIRECTORY SHOWING REVISED LOADS UPON COMPLETION OF THE JOB.
- 4 THIS CONTRACTOR SHALL ENSURE THAT ALL EXTG LIGHTING FIXTURES & RECEPTACLES DESIGNATED TO REMAIN SHALL BE OPERATIONAL UPON PROJECT COMPLETION. RESTORE WIRING AS REQUIRED.
- 5 ALL NEW, EXTG & RELOCATED LIGHTING FIXTURES IN RENOVATED AREA SHALL BE SUPPORTED BY APPROVED CHAINS WHICH SHALL ALLOW THE FIXTURES TO BE SUPPORTED INDEPENDENT OF THE CEILING SYSTEM. A 1x4 OR 2x4 LIGHT FIXTURE SHALL BE SUPPORTED WITH 2" CHAINS AT BOTH ENDS OF THE LIGHT FIXTURE CONNECT TO ALL FOUR CORNERS & ANCHORED DIRECTLY TO THE ROOF OR SLAB ABOVE THE LIGHT FIXTURE.
- 6 EACH RECEPTACLE & SYSTEM FURNITURE BASE FEED IN RENOVATED SPACE SHALL BEAR IDENTIFICATION OF ITS CIRCUIT(S) CONNECTED TO ON ITS FACEPLATE.
- 7 UNLESS OTHERWISE NOTED, ALL LIGHT SWITCHES, RECEPTACLES & ASSOCIATED FACEPLATES SUPPLIED SHALL BE DECORA STYLE WHITE FINISH. ANY EXISTING RECEPTACLES & FACEPLATES WHICH ARE NOT SHALL BE REPLACED WITH NEW DECORA STYLE WHITE FINISH.
- 8 ALL NEW CONDUIT INSTALLATION TO BE INSTALLED TIGHT TO THE CEILING SLAB, ABOVE MECHANICAL DUCTS, IN ORDER NOT TO DETER INSTALLATION OF BASE BUILDING LIGHTING FIXTURES, DUCTWORK & PIPING.
- 9 ANY EXTG BX WIRING, CONDUITS & BOXES IN THE CEILING WHICH ARE NOT PRESENTLY FASTENED PROPERLY SHALL BE SECURELY FASTENED. PROVIDE COVERPLATES FOR CEILING BOXES WITH MISSING COVERPLATES.
- 10 VERIFY LOCATIONS & MOUNTING HEIGHTS OF ALL NEW WIRING DEVICES WITH THE I.D. PRIOR TO ROUGH-IN.
- 11 ANY INTERRUPTION TO POWER PANEL OR LIFE SAFETY SYSTEMS SHALL BE CARRIED OUT UNDER PREMIUM TIME. PRIOR OWNER'S APPROVAL SHALL BE OBTAINED BEFORE PROCEEDING. PROVIDE MINIMUM 2-WEEK PRIOR NOTICE.
- 12 WHERE BUILDING IS CLASSIFIED AS BARRIER-FREE, CONTROL DEVICES SUCH AS SWITCHES, DIMMERS, THERMOSTAT, ETC. SHALL BE INSTALLED AT HEIGHT TO MEET O.B.C. 3.8.1.5.
- 13 BREAKERS SHOWN BOLD ARE NEW TO BE PROVIDED BY THIS CONTRACTOR.
- 14 REMOVE ALL EXTG WIRING & CONDUITS IN WALLS DESIGNATED TO BE REMOVED.
- 15 ELECTRICAL CONTRACTOR SHALL REMOVE ALL UNUSED & ABANDONED DATA/VOICE WIRING LEFT BY THE PREVIOUS OCCUPANTS INCLUDING BUT NOT LIMITED TO THE ONES IN THE CEILING SPACE OF THE RENOVATED SPACE.
- 16 UNLESS OTHERWISE NOTED, EXTG LIGHTING FIXTURES & RECEPTACLES SHOWN TO BE REMOVED SHALL HAVE THEIR WIRING REMOVED AS FAR BACK TO THE EXTG PANEL OR TO EXTG BASE BUILDING CEILING SLAB JUNCTION BOXES. UNDER NO CIRCUMSTANCES THAT EXPOSED AC-90 CABLES SHALL BE PERMITTED OR SEEN IN THE OPEN CEILING. UNUSED CIRCUIT BREAKERS IN PANEL TO BE IDENTIFIED AS "SPARE".
- 17 WHERE EXTG LIGHT SWITCH, RECEPTACLE & DATA/VOICE CONNECTIONS ARE SHOWN TO BE REMOVED FROM EXTG WALLS TO REMAIN, G.C. TO PATCH, PRIME & PAINT ALL THE HOLES BUT NOT LIMITED TO THE ONES SHOWN ON THIS FLOOR PLAN. CONFIRM FINISH WITH INTERIOR DESIGNER.
- 18 CONNECT NEW LIGHTING FIXTURES TO THE EXTG EMERGENCY LIGHTING CIRCUITS AS SHOWN. ELECTRICAL CONTRACTOR TO VERIFY & CONFIRM EXTG EMERGENCY LIGHTING CIRCUITS AT SITE.
- 19 CONNECT LIGHTING FIXTURE TO THE EXTG 120V LIGHTING CIRCUIT & CONTROLLED BY DESIGNATED LIGHT SWITCH AS SHOWN.
- 20 CONNECT NEW FIRE ALARM SPEAKER C/W STROBE TO EXTG 3RD FLOOR AUDIBLE & VISUAL CIRCUITS. IN THIS AREA, NEW FIRE ALARM SPEAKER/STROBE SHALL MATCH WITH BASE BUILDING TYPE. AT THE END OF THE PROJECT, ALLOW FOR TWO (2) VERIFICATIONS & FOUR (4) AUDIBILITY TESTINGS BY OWNER'S APPROVED FIRE ALARM TESTING COMPANY IN THE ENTIRE SPACE.
- 21 HANDICAP AUTO DOOR OPERATOR PUSH PLATE, INCLUDING CONTROL RELAYS, PUSH PLATES, ALL NECESSARY CONDUITS & COMMPOWER WIRING FOR THE DOOR OPERATOR SYSTEM. CONFIRM EXACT PLATE OR BUTTON STYLE WITH I.D. DWG PRIOR TO ORDERING.
- 22 ALLOW FOR CONDUITS WITH FISH WIRE FOR ELECTRIC STRIKE FOR THE AUTOMATIC DOOR OPERATOR SYSTEM.
- 23 PROVIDE NEW WATTSTOPPER UNIVERSAL VOLTAGE POWER PACK BZ-150 IN PLENUM SPACE TO BE CONTROLLED BY THE CEILING OCCUPANCY SENSOR (SEE NOTE #24). PROVIDE CLASS 2 WIRING BETWEEN POWER PACKS & CEILING OCCUPANCY SENSOR IN ACCORDANCE WITH MANUFACTURERS WIRING SCHEMATIC.
- 24 THIS CONTRACTOR TO PROVIDE ALL NECESSARY LABOUR & MATERIALS TO ENABLE ALL THE LIGHTING FIXTURES IN THE ENCLOSED ROOM TO BE CONTROLLED BY THE NEW OCCUPANCY CEILING SENSOR & SWITCH (TYP.).
- 25 REMOVE THE EXTG RECEPTACLE. LEAVE THE EXTG POWER WIRING IN EXTG BACK BOX. PROVIDE A BLANK-OFF PLATE WHERE THE EXTG RECEPTACLE BEEN REMOVED.
- 26 REMOVE EXTG CEILING SLAB MOUNTED SMOKE DETECTOR & ITS ASSOCIATED CONDUIT & WIRING.
- 27 CONNECT EXIT SIGN TO THE EXTG EXIT SIGN CIRCUIT IN THIS AREA. ELECTRICAL CONTRACTOR TO VERIFY THE EXTG EXIT SIGN CIRCUIT AT SITE.
- 28 PROVIDE EMPTY CONDUITS, BOXES, FISH WIRES AS REQUIRED FOR THE INSTALLATION OF CARD READER & ASSOCIATED EQUIPMENTS. COORDINATE & CONFIRM WITH BASE BUILDING CARD READER SYSTEM VENDOR PRIOR TO TENDER CLOSE.
- 29 SECURITY JUNCTION BOX IN DROPPED CEILING SPACE. ALLOW 1" FROM BOX TO BE RUN BACK TO CARD READER CONTROLLER. CONFIRM CONTROLLER LOCATION WITH SECURITY VENDOR PRIOR TO TENDER CLOSE.
- 30 PROVIDE A 120V POWER CONNECTION FOR TRAP SEAL PRIMER VALVE IN PLENUM SPACE. CONFIRM EXACT INSTALLATION LOCATION & CONNECTION REQUIREMENT (HARDWIRED OR RECEPTACLE) WITH MECHANICAL CONTRACTOR PRIOR TO ROUGH-IN.
- 31 PROVIDE 120V POWER CONNECTIONS FOR AUTO FLUSH & AUTO FAUCET IN PLENUM SPACE. COORDINATE EXACT LOCATION WITH MECHANICAL CONTRACTOR AT SITE PRIOR TO ROUGH-IN. ALLOW FOR FOUR (4) 120V POWER CONNECTIONS TO THE FOUR AUTO FLUSH & AUTO FAUCET IN WASHROOMS. PROVIDE WIRING TO MULTIPLE STEP DOWN XMERS AS REQUIRED.
- 32 REWIRE EXTG RECEPTACLE TO NEW CIRCUIT(S) IN BOLD AS SHOWN. CIRCUIT # IN BRACKET IS THE EXTG POWER CIRCUIT.
- 33 DUAL HANDICAP AUTO DOOR OPERATOR PLATE, INCLUDING CONTROL RELAYS, DUAL PUSH PLATES, ALL NECESSARY CONDUITS & COMMPOWER WIRING FOR THE DOOR OPERATOR SYSTEM. CONFIRM EXACT PLATE OR BUTTON STYLE WITH I.D. DWG PRIOR TO ORDERING.
- 34 REPLACE EXTG 15A COUNTER RECEPTACLE WITH A NEW 20A T-SLOT RECEPTACLE. PROVIDE NEW POWER WIRING & NEW 20A-1P BREAKER AS REQUIRED & CONNECTED TO DESIGNATED BRANCH CIRCUIT AS SHOWN.
- 35 IN SHOWER ROOMS B106C & B106D, SET THE FIRE ALARM SPEAKER/STROBE POWER TAP TO 14W.

**LEGEND**

- NOTES:** EQUIPMENT SHOWN DOTTED [ - - - ] ARE EXISTING TO BE REMOVED. EQUIPMENT SHOWN [ --- ] ARE EXISTING TO REMAIN. EQUIPMENT SHOWN BOLD [ --- ] ARE NEW OR RELOCATED.
- [ ] NEW OR RELOCATED FLUORESCENT OR LED LUMINAIRE. REFER TO LUMINAIRE SCHEDULE.
  - [ ] LIGHTING FIXTURE CONNECTED TO EMERGENCY LIGHTING CIRCUIT.
  - [ ] EXISTING FLUORESCENT OR LED LUMINAIRE
  - [ ] EXISTING TO BE REMOVED FLUORESCENT OR LED LUMINAIRE
  - [ ] INCANDESCENT, PL OR LED LUMINAIRE.
  - [ ] EXIT LIGHTS.
  - [ ] SINGLE POLE, SINGLE THROW TOGGLE SWITCH. (F DENOTES FAN, LV DENOTES LOW VOLTAGE, 3 DENOTES 3-WAY, M DENOTES MASTER)
  - [ ] DIMMER.
  - [ ] WALL MOUNTED OCCUPANCY SENSOR/LIGHT SWITCH WATTSTOPPER DSW-301-W, AC VOLTAGE TO SUIT LOAD VOLTAGE.
  - [ ] CEILING MOUNTED OCCUPANCY SENSOR WATTSTOPPER DT-300 OR EQUAL. (CONFIRM WIRING WITH MANUFACTURERS PRINTED BROCHURE).
  - [ ] UNIVERSAL VOLTAGE POWER PACK WATTSTOPPER BZ-150 UNLESS OTHERWISE NOTED.
  - [ ] 120V CONNECTION TO EQUIPMENT.
  - [ ] 208V 1Ø CONNECTION TO EQUIPMENT.
  - [ ] 230V 1Ø CONNECTION TO EQUIPMENT.
  - [ ] 600V 3Ø CONNECTION TO EQUIPMENT.
  - [ ] DISCONNECT SWITCH.
  - [ ] 15A-125V 2P-3W GROUNDED DUPLEX RECEPTACLE, WALL MOUNTED.
  - [ ] 15A-125V 2P-3W GROUNDED QUADRAPLEX RECEPTACLE, WALL MOUNTED.
  - [ ] 20A-125V 2P-3W (5-20RA) GROUNDED DUPLEX RECEPTACLE, WALL MOUNTED.
  - [ ] 20A-125V 2P-3W (5-20RA) GROUNDED QUAD RECEPTACLE, WALL MOUNTED.
  - [ ] P.A. SPEAKER.
  - [ ] JUNCTION BOX MOUNTED IN CEILING SPACE.
  - [ ] WALL MOUNTED TELEPHONE OUTLET C/W FISH WIRE & FACEPLATE.
  - [ ] WALL MOUNTED DATA OUTLET C/W FISH WIRE & FACEPLATE. UNLESS OTHERWISE NOTED, PROVIDE 1" FROM EACH OUTLET TO ACCESSIBLE CEILING SPACE.
  - [ ] WALL/CEILING MOUNTED COMBINATION FIRE ALARM SPEAKER & STROBE LIGHT.
  - [ ] WALL/CEILING MOUNTED FIRE ALARM STROBE LIGHT.
  - [ ] DENOTES SMOKE DETECTOR.
  - [ ] FIRE ALARM MANUAL PULLSTATION.
  - [ ] DENOTES PUSH BUTTON.
  - [ ] DENOTES ELECTRIC STRIKE.
  - [ ] DENOTES DOOR CONTACTOR.
  - [ ] DENOTES CARD READER.
  - [ ] DENOTES REQUEST-FOR-EXIT.
  - [ ] DENOTES SECURITY JUNCTION BOX.
  - [ ] SURFACE MOUNTED DOUBLE GANG JUNCTION BOX C/W 1 1/4" FROM JUNCTION BOX STUBBED UP.
  - [ ] DENOTES END-OF-LINE RESISTOR.
  - [ ] DENOTES GROUND FAULT INTERRUPTOR.
  - [ ] DENOTES MOUNTED 6" ABOVE COUNTER TOP OR SPLASHBACK.
  - [ ] DENOTES TO BE INSTALLED 42" ABOVE FINISHED FLOOR.
  - [ ] DENOTES NOTE 2.
  - [ ] DENOTES MECHANICAL EQUIPMENT EF-1.

**LUMINAIRE SCHEDULE**

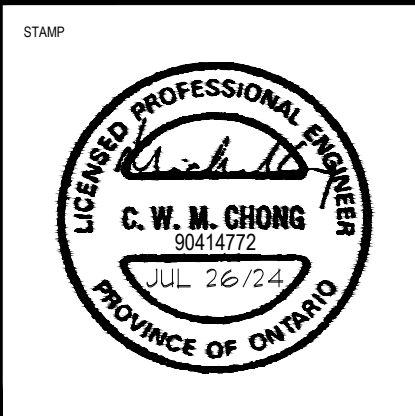
TYPE	MANUFACTURER	CATALOGUE NO.	LAMPS	VOLT	REMARKS
G	CFI	1DLG36L840-4-D UNV-DIM	LED 36W 4000°K 3600 LUMENS	120V	RECESSED CEILING MOUNTED 1'x4' LED LIGHT / WHITE FINISH / 0-10V DIMMING
L	HALO	H750T-ML5612840 692W	LED 15W 4000°K 1200 LUMENS	120V	RECESSED T-BAR CEILING MOUNTED 6'Ø LED DOWNLIGHT / 0-10V DIMMING / WHITE REFLECTOR & FLANGE / 80 CRI / WET LOCATION
X SERIES	AIMLITE	RPALV2MWH-T-UNVDC	2.5W LED	UNIV.	X1-WALL MOUNTED, X2-CEILING MOUNTED / WHITE FINISH / UNIVERSAL AC VOLTAGE / C/W ARROW HEAD(S) AS SHOWN



**Tanco Engineering Limited**  
Consulting Engineers

80 Nashdene Road, Suite 213  
Scarborough, Ontario  
M1V 5E4 (416) 321-3022

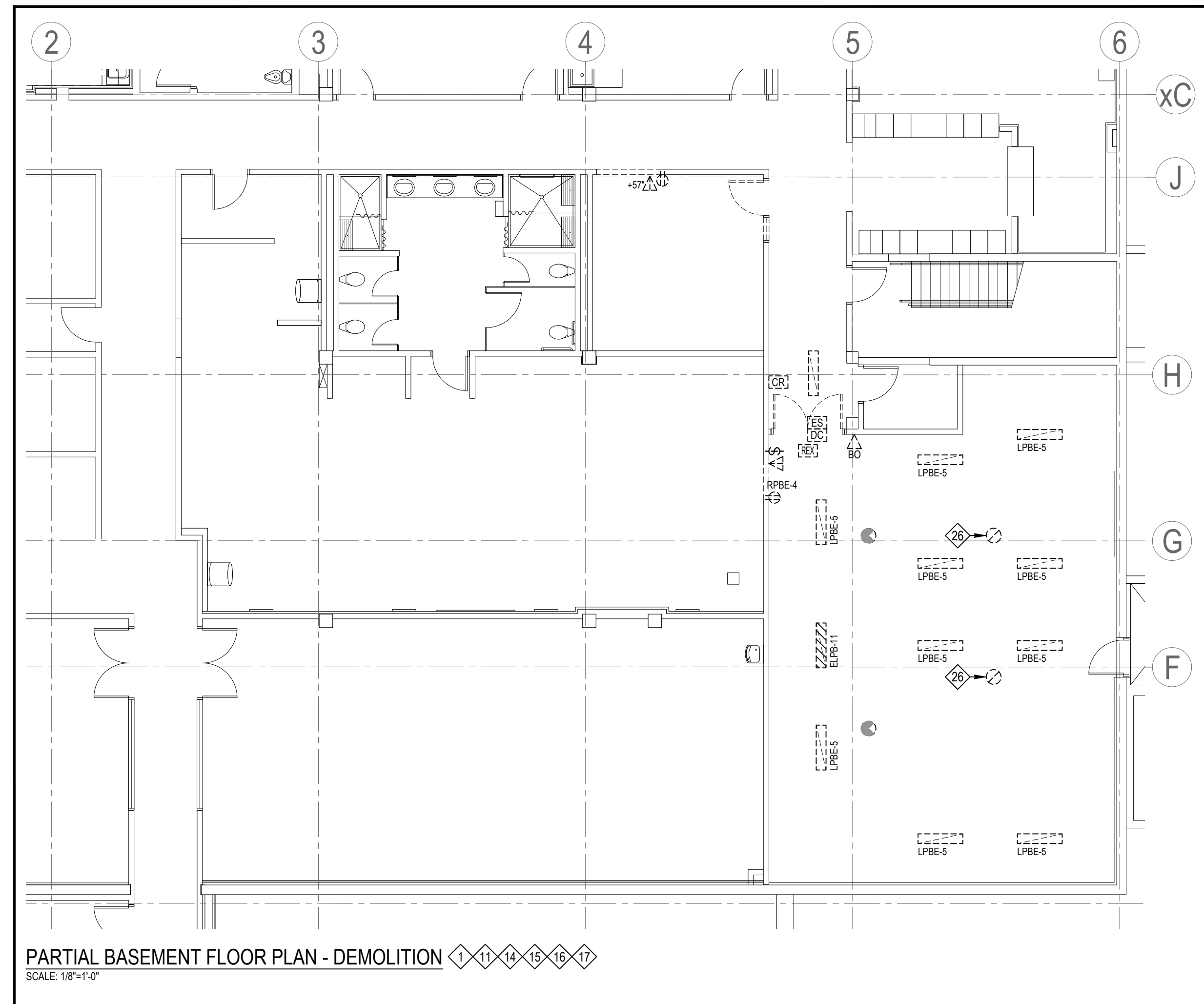
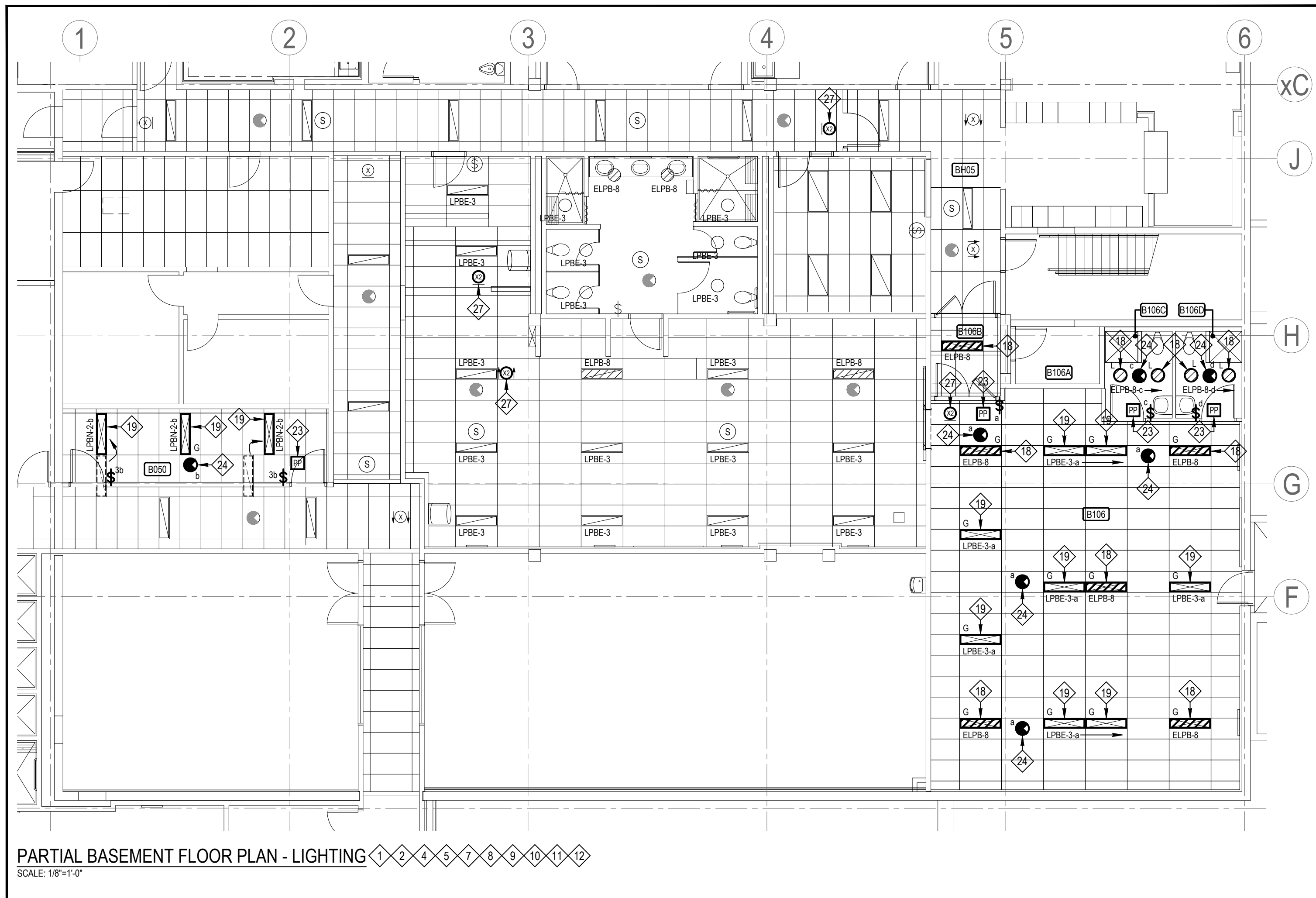
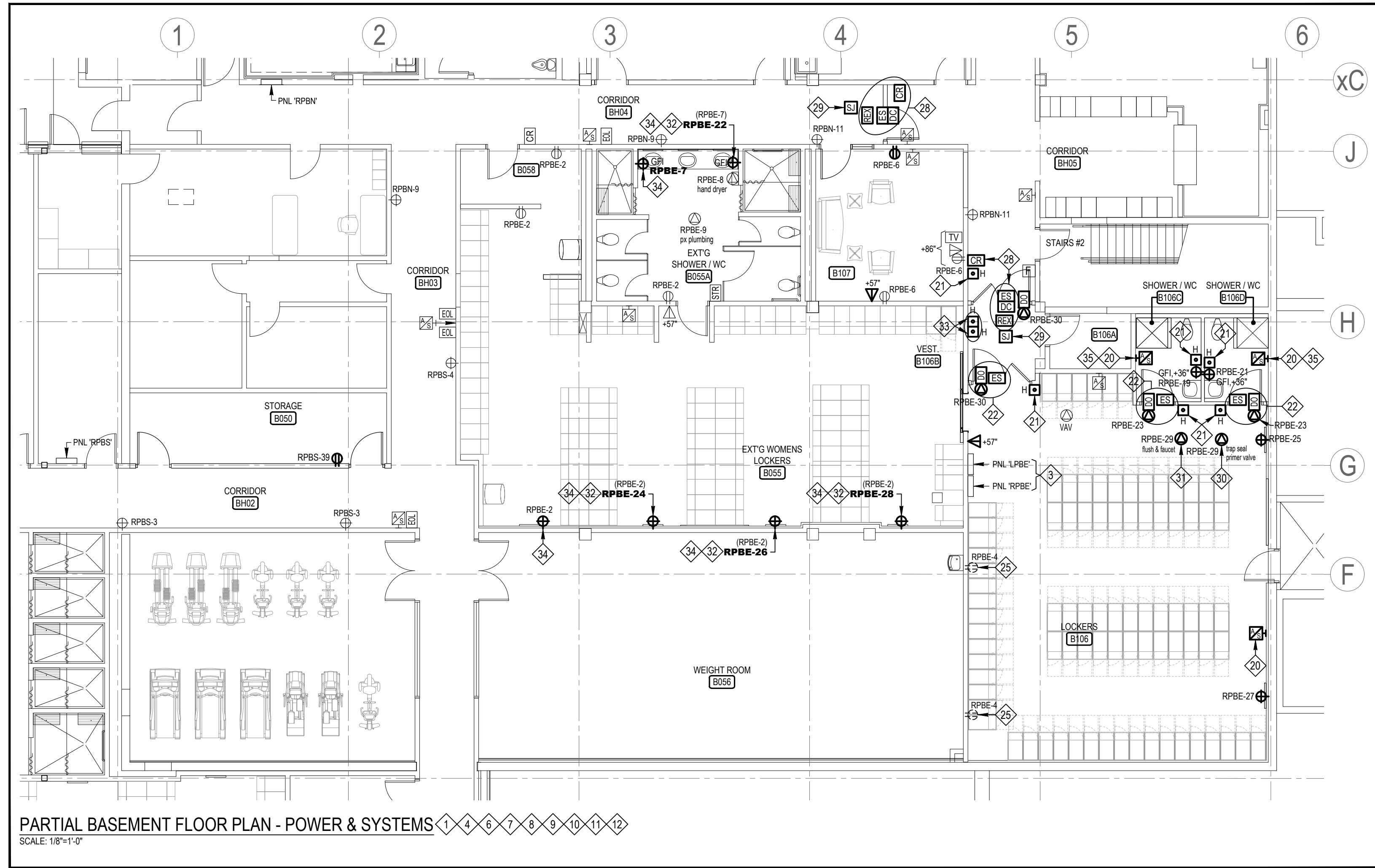
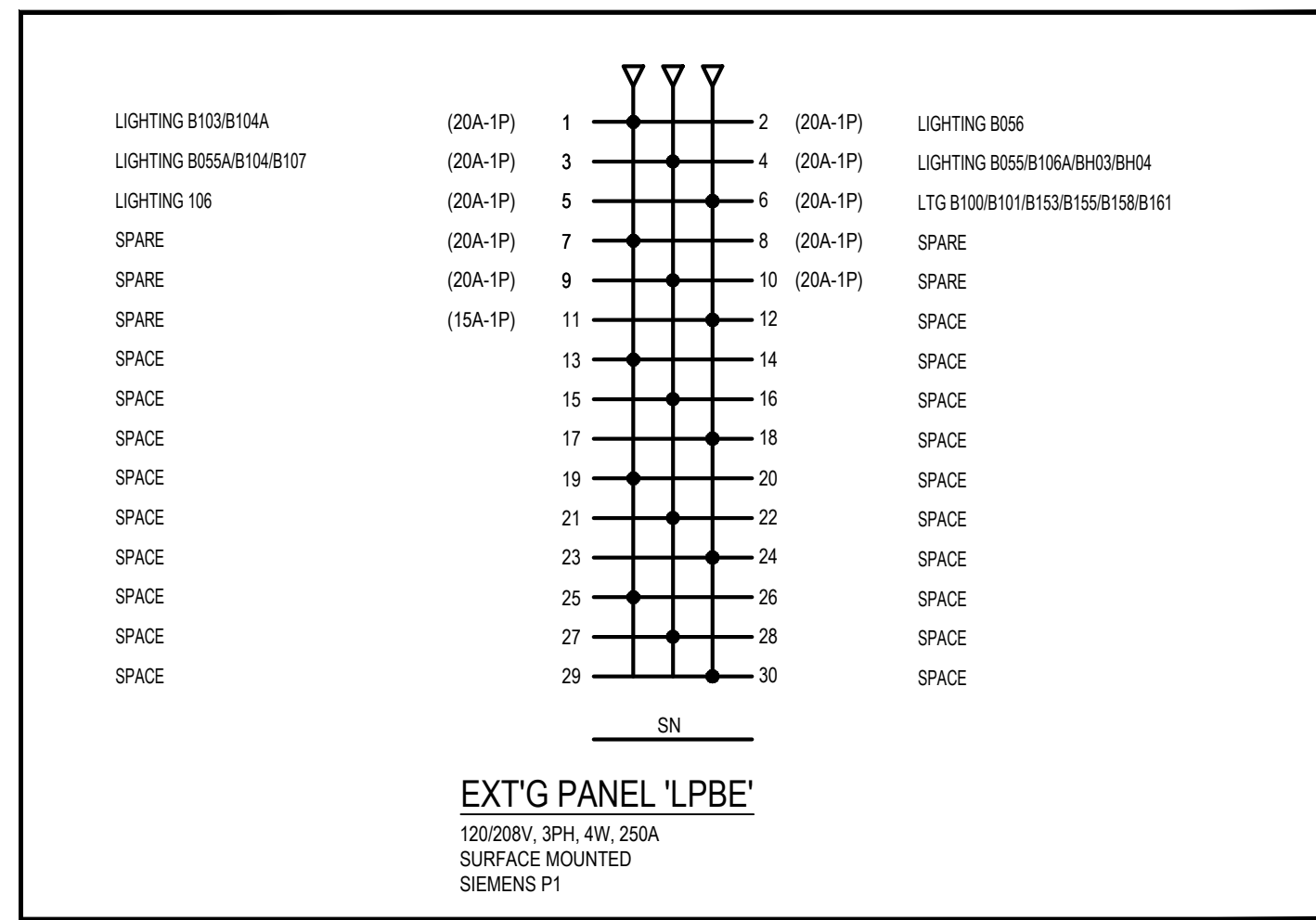
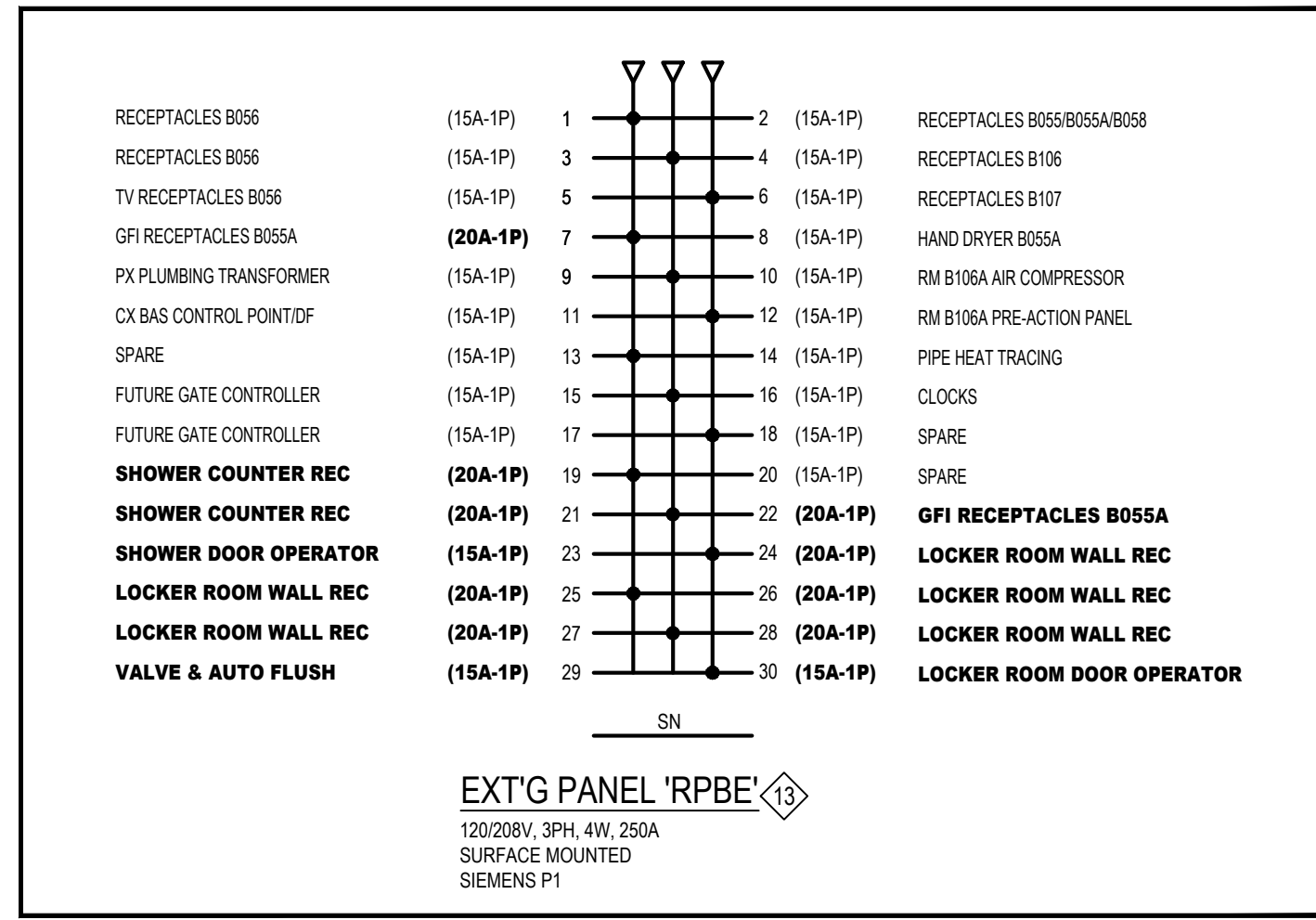
No.	Date	Issued or Revised
	July 26, 2024	Issued for Permit & Tender
	Jul 04, 2024	Issued for Client Review



PROJECT:  
**PEEL REGIONAL POLICE**  
BASEMENT  
3030 ERIN MILLS PARKWAY  
MISSISSAUGA, ON

**LEGEND & NOTES**

SCALE: AS NOTED	DATE: APR 30, 2024
DRAWN BY: A.Z.	PROJECT NO: 2408
DRAWING NO: E-1	



**Tanco Engineering Limited**  
Consulting Engineers

80 Nashdene Road, Suite 213  
Scarborough, Ontario  
M1V 5E4 (416) 321-3022

No.	Date	Issued or Revised

July 26, 2024	Issued for Permit & Tender
Jul 04, 2024	Issued for Client Review



PROJECT:  
**PEEL REGIONAL POLICE**  
BASEMENT  
3030 ERIN MILLS PARKWAY  
MISSISSAUGA, ON

DRAWING TITLE:  
**PARTIAL BASEMENT FLOOR PLANS - ELECTRICAL**

SCALE: AS NOTED DATE: APR 30, 2024

DRAWN BY: A.Z. PROJECT NO: 2408

DRAWING NO: **E-2**