

1 GROUND FLOOR - KEY PLAN AND PHASING PLAN
1:100

MCW
MCW Consultants Ltd.
 Vancouver Calgary
 Edmonton Dauphin
 Winnipeg Toronto
 Thunder Bay
 Chatham Marston
 Saint John Truro
 Halifax

Queen's Quay Terminal
 207 Queen's Quay West, Suite 615
 Toronto, Ontario, M5J 1A7
 Tel: 416-598-2920
 Fax: 416-598-5394
 www.mcw.com

23355-01

NOTE: THIS DRAWING IS NOT TO BE SCALED. THE CONTRACTOR IS RESPONSIBLE FOR THE VERIFICATION OF ALL SITE DIMENSIONS AND FOR NOTIFYING THE ARCHITECT OF ANY SITE CONDITIONS AND SITE MEASUREMENTS THAT ARE NOT CONSISTENT WITH THE DRAWINGS.

no.	revision	date

no.	Issue	date
B1	Issue for Review	2024-06-07
B2	Issue for Permit & Class C Costing	2024-06-17
B3	Issue for Tender	2024-06-27

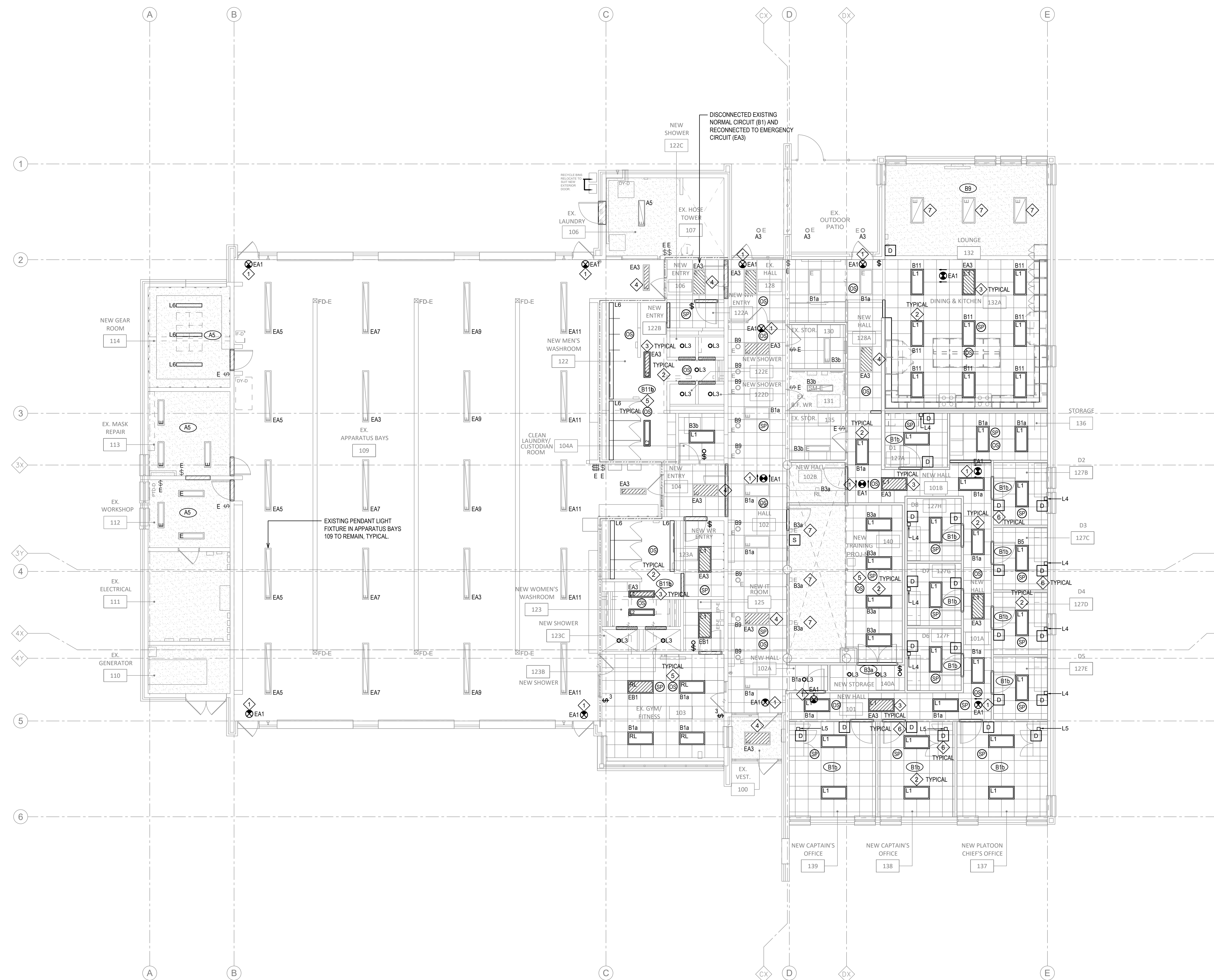
PROJECT
**CLARRINGTON
 FIRE &
 EMERGENCY**

Project
 RENOVATION TO CLARRINGTON FIRE & EMERGENCY SERVICES STATION 1
 The Corporation of the Municipality of Clarrington

2430 Durham Regional Hwy 2, Bowmanville, ON L7C 6C8

Drawing
ELECTRICAL KEY PLAN AND PHASING PLAN
 drawing scale:
AS NOTED
 W4025 project number
24008 - DURHAM FIRE STATION

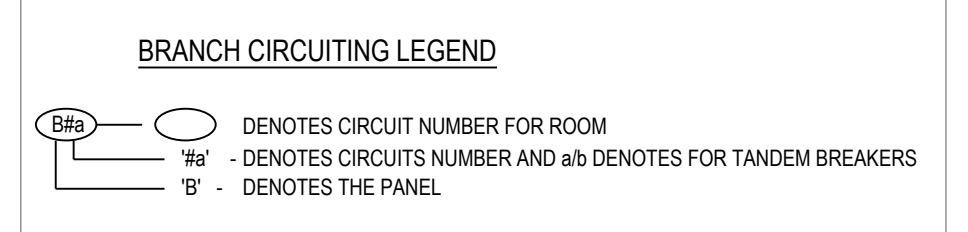
drawing no.
E0-02



1 GROUND FLOOR - LIGHTING PLAN

1:100

LIGHTING CONTROL	
<p>PROVIDE NEW LOW VOLTAGE LIGHTING CONTROLS IN ALL AREAS. ENSURE CONTROL INTENT IS CAPTURED WITH NEW LIGHTING CONTROL SYSTEM.</p> <p>AREA</p> <p>CONTROL INTENT</p>	
<p>DORM ROOMS (INCLUDING CAPTAIN'S OFFICE & PLATOON CHIEF OFFICE)</p>	<p>PROVIDE ROOM CONTROLLER(S) FOR TWO (2) 0-10V LIGHTING ZONES. PROVIDE TWO (2) SCENE DIMMER SWITCHES. ONE AT DOOR AND ONE AT BED THAT CAN CONTROL EACH LIGHTING ZONE INDEPENDENTLY C/W DIMMING.</p> <p>ZONE 1 - CEILING LIGHTS L1</p> <p>ZONE 2 - BEDSIDE LIGHTS (L4L)</p> <p>PROVIDE ONE CEILING MOUNTED OCCUPANCY SENSOR</p> <p>LIGHTING TO BE MANUAL ON AND AUTO OFF AFTER 20 MINUTES.</p>
<p>NEW TRAINING ROOM</p>	<p>PROVIDE ROOM CONTROLLER(S) FOR TWO (2) LIGHTING ZONES. PROVIDE ONE (1) SCENE SWITCH. THAT CAN CONTROL EACH LIGHTING ZONE INDEPENDENTLY.</p> <p>ZONE 1 - EXISTING LIGHTS</p> <p>ZONE 2 - NEW L1 LIGHTS</p> <p>CEILING MOUNTED OCCUPANCY SENSOR</p> <p>LIGHTING TO BE MANUAL ON AND AUTO OFF AFTER 20 MINUTES.</p>
<p>WASHROOMS</p>	<p>PROVIDE NORMAL POWER ROOM CONTROLLER FOR NORMAL LIGHTING AND EMERGENCY ROOM CONTROLLER FOR EMERGENCY LIGHTING. PROVIDE LOW VOLTAGE SWITCH AT DOOR FOR CONTROL OF ALL THE LIGHTS (BOTH NORMAL AND EMERGENCY).</p> <p>LIGHTING TO BE MANUAL ON AND AUTO OFF AFTER 20 MINUTES.</p>
<p>CORRIDORS/ HALLS</p>	<p>PROVIDE ROOM CONTROLLER(S) FOR TWO (2) 0-10V LIGHTING ZONES. PROVIDE ONE (1) SCENE DIMMER SWITCH.</p> <p>ZONE 1 - EXISTING LIGHTS</p> <p>ZONE 2 - NEW LIGHTS</p> <p>PROVIDE OCCUPANCY SENSOR</p> <p>LIGHTING TO BE MANUAL ON AND AUTO OFF AFTER 20 MINUTES.</p> <p>PROVIDE NORMAL POWER ROOM CONTROLLER FOR NORMAL LIGHTING AND EMERGENCY ROOM CONTROLLER FOR EMERGENCY LIGHTING. PROVIDE LOW VOLTAGE SWITCH AT EACH DOOR FOR CONTROL OF ALL THE LIGHTS (BOTH NORMAL AND EMERGENCY).</p> <p>LIGHTING TO BE MANUAL ON AND AUTO OFF AFTER 20 MINUTES.</p>
<p>DINING & KITCHEN</p>	
<p>GYM FITNESS</p>	<p>PROVIDE ROOM CONTROLLER(S) FOR TWO (2) 0-10V LIGHTING ZONES. PROVIDE ONE (1) SCENE DIMMER SWITCH.</p> <p>ZONE 1 - EXISTING LIGHTS</p> <p>ZONE 2 - NEW LIGHTS</p> <p>PROVIDE OCCUPANCY SENSOR</p> <p>LIGHTING TO BE MANUAL ON AND AUTO OFF AFTER 20 MINUTES.</p> <p>PROVIDE NORMAL POWER ROOM CONTROLLER FOR NORMAL LIGHTING AND EMERGENCY ROOM CONTROLLER FOR EMERGENCY LIGHTING. PROVIDE LOW VOLTAGE SWITCH AT EACH DOOR FOR CONTROL OF ALL THE LIGHTS (BOTH NORMAL AND EMERGENCY).</p> <p>LIGHTING TO BE MANUAL ON AND AUTO OFF AFTER 20 MINUTES.</p>



- KEY NOTES:**
- NEW GREEN PICTOGRAM EXIT SIGN. CONNECT TO EXISTING EXIT SIGN CIRCUIT AS INDICATED.
 - CONNECT NEW LED LIGHT FIXTURES TO NORMAL LIGHTING CIRCUIT AS INDICATED.
 - CONNECT NEW LED LIGHT FIXTURES TO EMERGENCY LIGHTING CIRCUIT AS INDICATED.
 - EXISTING FLUORESCENT LIGHTING FIXTURE CONNECTED TO EMERGENCY LIGHTING CIRCUIT TO REMAIN.
 - NEW CEILING MOUNTED DUAL TECHNOLOGY OCCUPANCY LIGHTING SENSOR FOR CONTROLLING EXISTING NEW 120V LIGHTING FIXTURES. MODIFY EXISTING WIRING AS REQUIRED.
 - PROVIDE LOW VOLTAGE SWITCHES TO CONTROL THE OVERHEAD LIGHT AND LIGHT IN BED INDEPENDENTLY FROM ONE ANOTHER. THE SWITCHES ARE TO ALLOW THE OCCUPANT TO CONTROL THE LIGHTS INDEPENDENTLY OF ONE ANOTHER.
 - REWIRE EXISTING LIGHTS TO BE CONTROLLED VIA LOCAL ROOM CONTROLLER. ALLOW FOR FUTURE 0-10V CONTROL ON THESE LIGHTS.

LIGHTING FIXTURE SCHEDULE

SYMBOLS	BASE / MANUFACTURER (AS SPECIFIED)	MODEL NO.	CEILING TYPE				WALL TYPE		WATTAGE		BALLAST VOLTAGE		REMARKS
			SURFACE	RECESSED	SUSPENDED	RECESSED	BRACKET	(CCT/CR)	LUMENS (NOM.)		120 V.	12 VDC.	
L1	COPPER LIGHTING	METALUX 2x4" RECESSED MOUNTED FLAT LED PANEL CAT# 140GTS-MV-CW-120V-DRIVER	•					4000K	MEDIUM	37.4W LED	•		
L2	COPPER LIGHTING	METALUX 1x4" RECESSED MOUNTED FLAT LED PANEL CAT# 140GTS-MV-CW-120V-DRIVER	•					4000K	MEDIUM	33.5W LED	•		
OL-3	COPPER LIGHTING	HALO 4" RECESSED MOUNTED DOWN LIGHT CAT# HC415D01 - HM40525835 - 41MDC	•					3500K	1500	14.5W LED	•		
DL-4	OCL LIGHTING	NEWPORT WALL MOUNTED SCONCE LIGHT CAT# S15A-18-MV-XX-LED1-30K-DM1				•		3000K	1050	20W LED	•		
DL-5	LUMENWERX	POP RECESSED WALL MOUNTED LIGHT CAT# P0CR0R-12H-4-LD-SW-80-750-30-125-D1-1-DF-W-NA				•		3000K	750	8W LED	•		
L6	COPPER LIGHTING	METALUX LINEAR LED STRIPLIGHT CAT# 4500-XX-UV-LV-4535-CD1	•					3500K		17W LED	•		
⊙ ⊙	LUMACELL	CAT# LA SERIES. SELF POWER GREEN PICTOGRAM	•	•						3W LED	•	•	

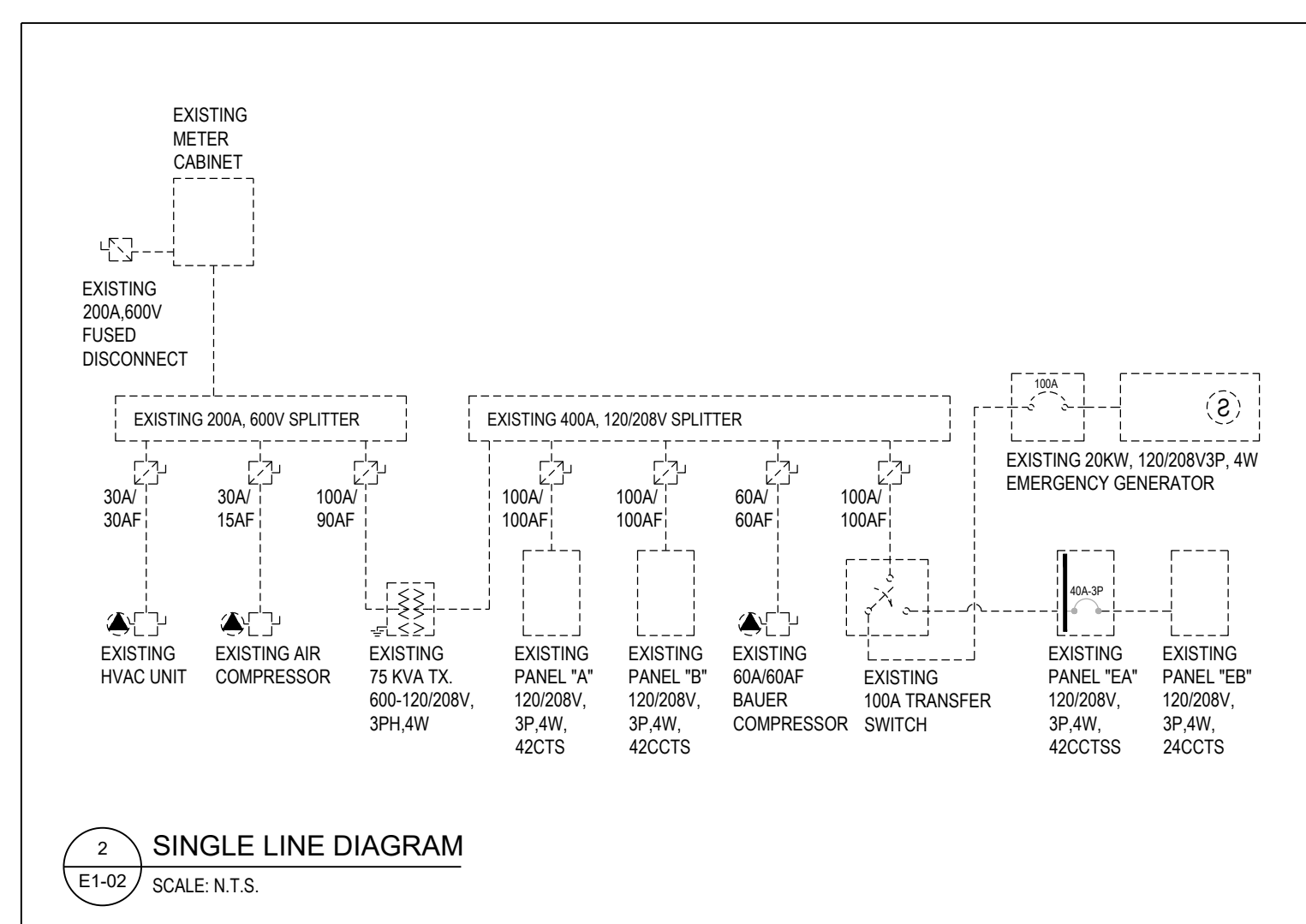
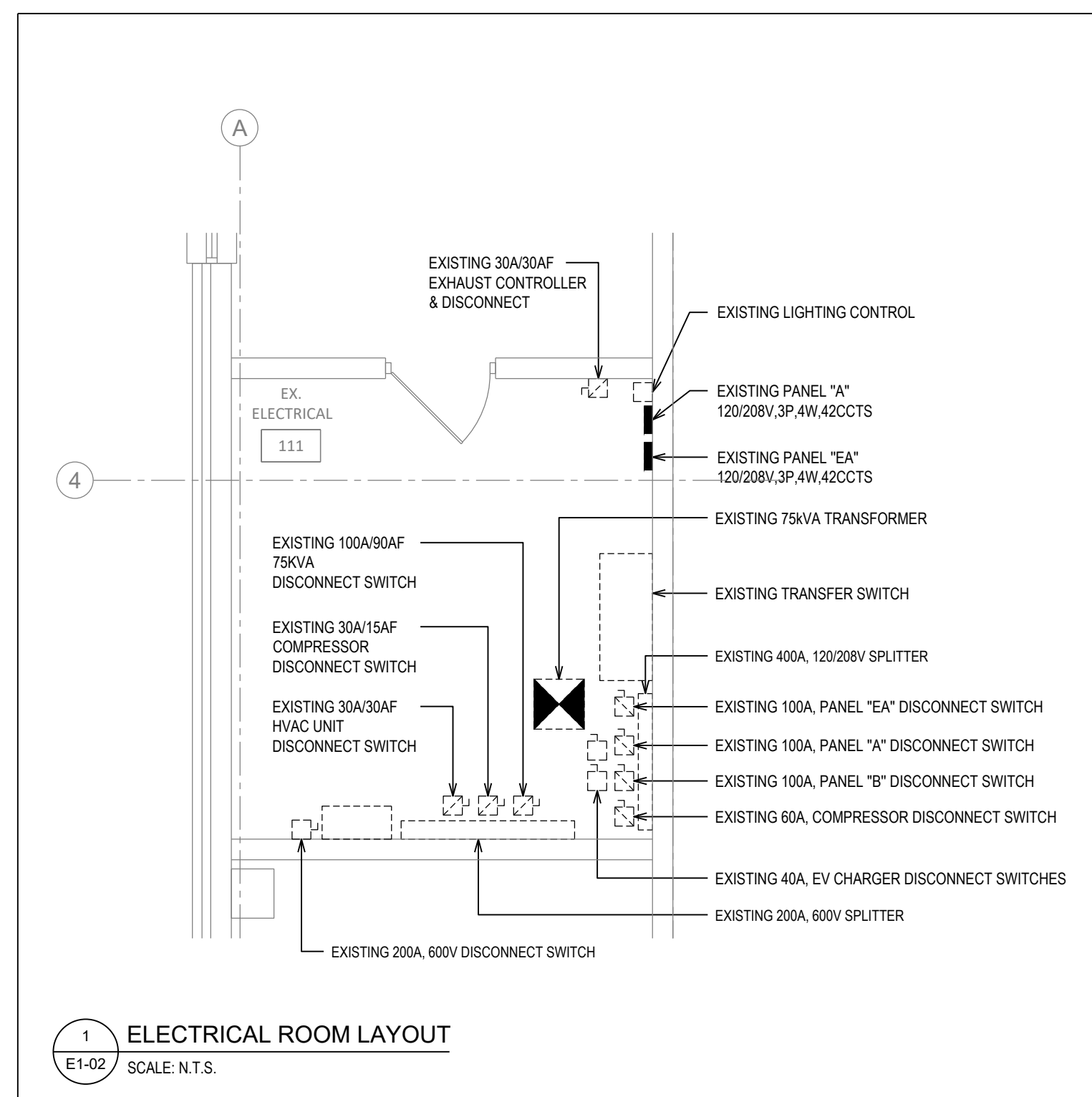
NOTE: THIS DRAWING IS NOT TO BE SCALED. THE CONTRACTOR IS RESPONSIBLE FOR THE VERIFICATION OF ALL SITE DIMENSIONS AND FOR NOTIFYING THE ARCHITECT OF ANY SITE CONDITIONS AND SITE MEASUREMENTS THAT ARE NOT CONSISTENT WITH THE DRAWINGS.

no.	revision	date

no.	Issue	date
B1	Issue for Review	2024-06-07
B2	Issue for Permit & Class C Coating	2024-06-17
B3	Issue for Tender	2024-06-27

project
 RENOVATION TO CLARINGTON FIRE & EMERGENCY SERVICES STATION 1
 The Corporation of the Municipality of Clarington
 2430 Durham Regional Hwy 2, Bowmanville, ON L1C 6C8
 drawing
GROUND FLOOR LIGHTING PLAN
 drawing scale
 1 : 100
 worksheet number
24008 - DURHAM FIRE STATION

E1-01

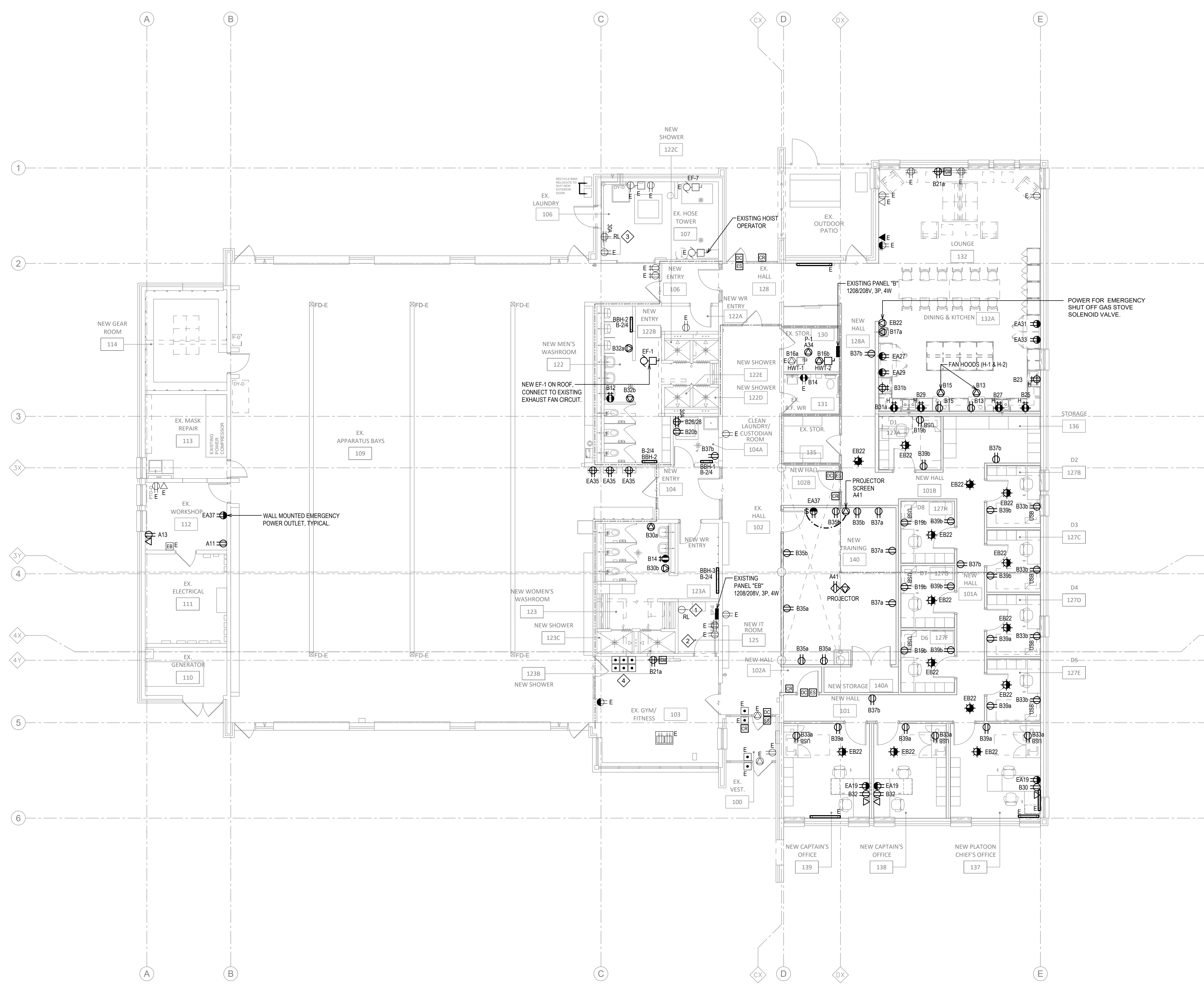


ELECTRIC BASEBOARD HEATER SCHEDULE

SYMBOLS	MANUFACTURER	MODEL NO.	WATTAGE	VOLTAGE	REMARKS
BBH-1	STELPRO	CB86038 WHITE	300W	208V, 1P	COMPLETE WITH BUILT-IN THERMOSTAT
BBH-2	STELPRO	CB86058 WHITE	500W	208V, 1P	COMPLETE WITH BUILT-IN THERMOSTAT
BBH-3	STELPRO	CB81208 WHITE	1000W	208V, 1P	COMPLETE WITH BUILT-IN THERMOSTAT

KEY NOTES:

- 1 RELOCATED NEMA L5-30R RECEPTACLE. COORDINATE EXACT LOCATION WITH CLIENT ON SITE FOR USE WITH IT EQUIPMENT.
- 2 RELOCATE ALL EXISTING IT SERVICES TO NEW IT ROOM COORDINATE WITH CLIENT FOR EXACT LOCATION ON SITE.
- 3 RELOCATED NEMA 14-30R TO ALLOW FOR NEW DOOR.
- 4 RELOCATED APPARATUS BAYS 109 DOORS PUSH BUTTONS. COORDINATE WITH CLIENT FOR EXACT LOCATION ON SITE.



NOTE: THIS DRAWING IS NOT TO BE SCALED. THE CONTRACTOR IS RESPONSIBLE FOR THE VERIFICATION OF ALL SITE DIMENSIONS AND FOR NOTIFYING THE ARCHITECT OF ANY SITE CONDITIONS AND SITE MEASUREMENTS THAT ARE NOT CONSISTENT WITH THE DRAWINGS.

no.	revision	date

no.	issue	date
B1	Issue for Review	2024-06-07
B2	Issue for Permit & Class C Costing	2024-06-17
B3	Issue for Tender	2024-06-27

PROJECT
RENOVATION TO CLARINGTON FIRE & EMERGENCY SERVICES STATION 1
The Corporation of the Municipality of Clarington

2430 Durham Regional Hwy 2, Bowmanville, ON L1C 6C8

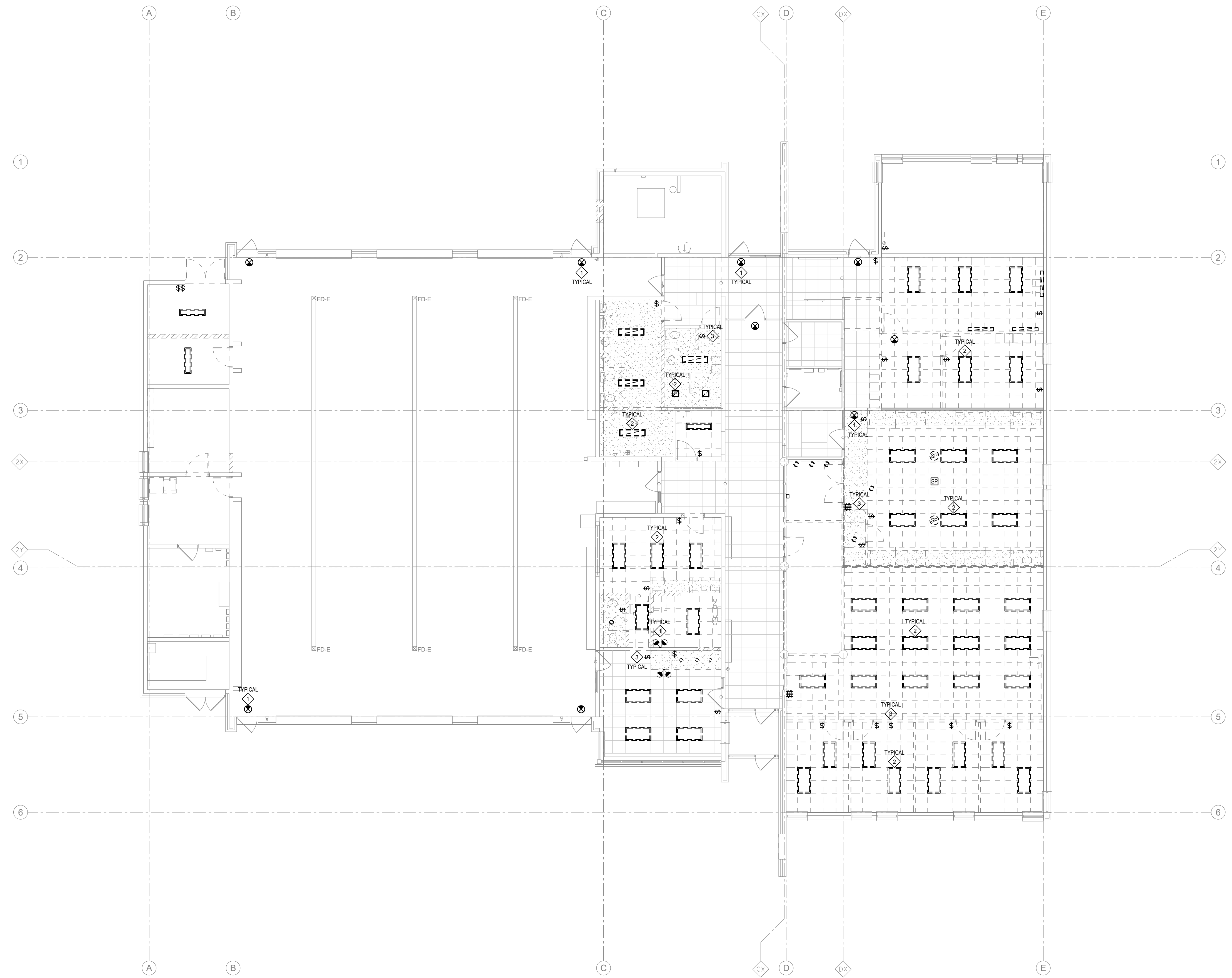
drawing
GROUND FLOOR POWER AND COMMUNICATIONS PLAN

drawing scale
1: 100

project number
24008 - DURHAM FIRE STATION

drawing no.

E1-02



1 GROUND FLOOR - LIGHTING DEMOLITION PLAN
1:100

KEY NOTES

- ◇ EXISTING EMERGENCY RED EXIT LIGHTS, BATTERY UNIT AND REMOTE HEAD TO BE DISCONNECTED AND REMOVED, TYPICAL.
- ◇ EXISTING LIGHT FIXTURES TO BE DISCONNECTED AND REMOVED, TYPICAL.
- ◇ EXISTING WALL MOUNTED SWITCHES TO BE DISCONNECTED AND REMOVED, TYPICAL.

MCW *Consultants Ltd.*
 Vancouver, Calgary, Edmonton, Dauphin, Winnipeg, Toronto, Thunder Bay, Ottawa, Montreal, Saint John, Truro, Halifax
Queen's Quay Terminal
 207 Queen's Quay West, Suite 615
 Toronto, Ontario, M5J 1A7
 Tel: 416-598-2920
 Fax: 416-598-5394
 www.mcw.com

NOTE: THIS DRAWING IS NOT TO BE SCALED. THE CONTRACTOR IS RESPONSIBLE FOR THE VERIFICATION OF ALL SITE DIMENSIONS AND FOR NOTIFYING THE ARCHITECT OF ANY SITE CONDITIONS AND SITE MEASUREMENTS THAT ARE NOT CONSISTENT WITH THE DRAWINGS.

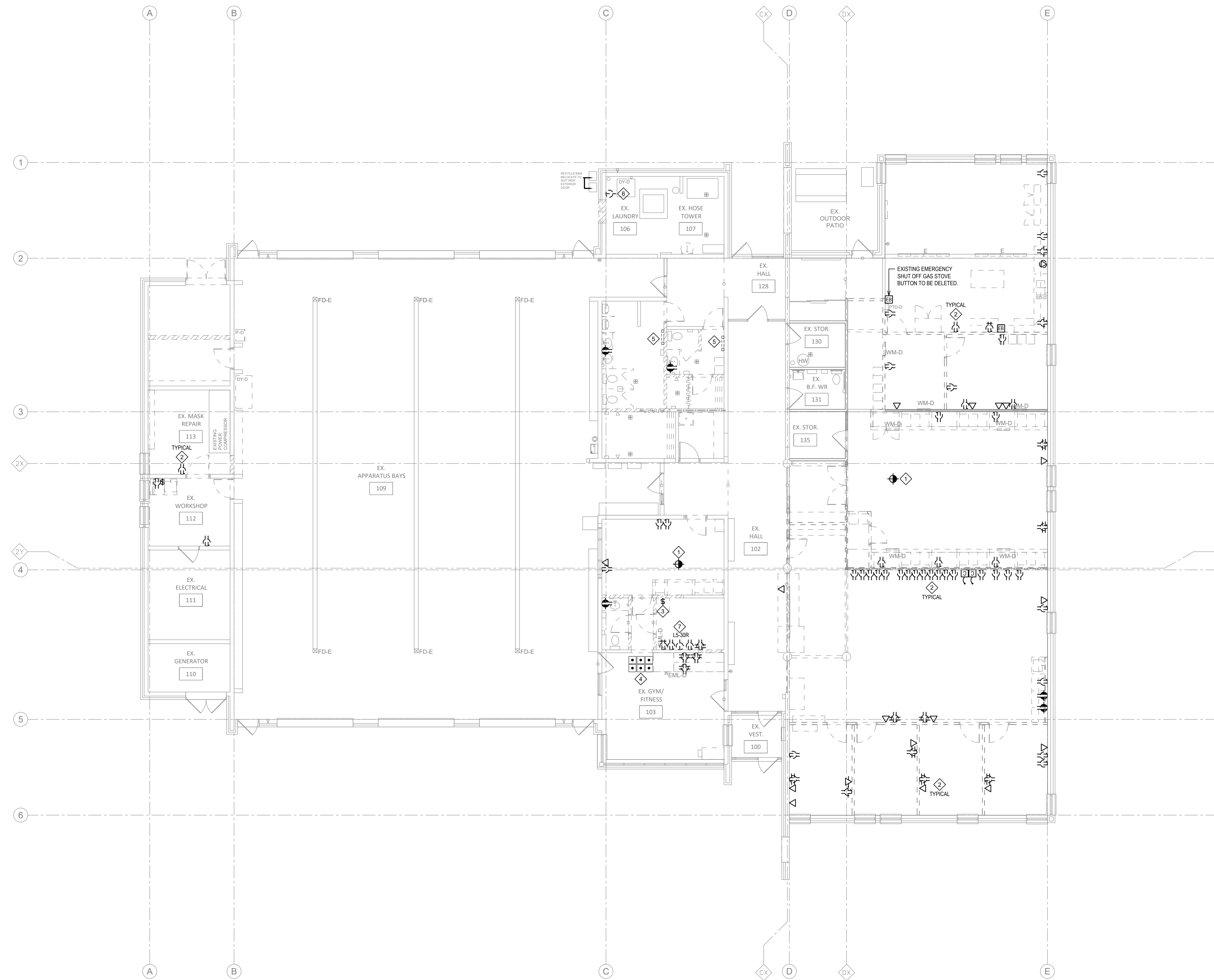
no.	revision	date

no.	issue	date
B1	Issue for Review	2024-06-07
B2	Issue for Permit & Class C Costing	2024-06-17
B3	Issue for Tender	2024-06-27

PROJECT: **RENOVATION TO CLARINGTON FIRE & EMERGENCY SERVICES STATION 1**
 The Corporation of the Municipality of Clarington
 2430 Durham Regional Hwy 2, Bowmanville, ON L1C 6C8

DRAWING: **GROUND FLOOR LIGHTING DEMOLITION PLAN**
 drawing scale: **AS NOTED**
 WOODS PROJECT NUMBER: **24008 - DURHAM FIRE STATION**

E3-01



1 GROUND FLOOR - POWER & COMMUNICATIONS DEMOLITION PLAN
1:100

NOTE: THIS DRAWING IS NOT TO BE SCALED. THE CONTRACTOR IS RESPONSIBLE FOR THE VERIFICATION OF ALL SITE DIMENSIONS AND FOR NOTIFYING THE ARCHITECT OF ANY SITE CONDITIONS AND SITE MEASUREMENTS THAT ARE NOT CONSISTENT WITH THE DRAWINGS.

no.	revision	date

- KEY NOTES**
- ◇ EXISTING SINGLE STATION SMOKE ALARM TO BE DISCONNECTED AND REMOVED.
 - ◇ EXISTING WALL MOUNTED POWER, COMMUNICATIONS OUTLETS AND SYSTEM FURNITURE TO BE DISCONNECTED AND REMOVED, TYPICAL.
 - ◇ EXISTING APPARATUS BAYS 100 DOORS PUSH BUTTONS TO BE DISCONNECTED AND RELOCATED, TYPICAL. REFER TO E1-02 FOR LOCATION.
 - ◇ EXISTING EXHAUST FAN CONTROL SWITCH TO BE DISCONNECTED AND REMOVED.
 - ◇ EXISTING BASEBOARD HEATER TO BE DISCONNECTED AND REMOVED.
 - ◇ EXISTING NEMA 14-30R TO BE RELOCATED TO ALLOW FOR NEW DOOR TO BE INSTALLED. REFER TO DWG E1-02 FOR LOCATION.
 - ◇ EXISTING NEMA L5-30R TO BE RELOCATED. REFER TO DWG E1-02 FOR LOCATION.

no.	issue	date
01	Issue for Review	2024-06-07
02	Issue for Permit & Class C Costing	2024-06-17
03	Issue for Tender	2024-06-27

project
 RENOVATION TO CLARINGTON FIRE & EMERGENCY SERVICES STATION 1
 The Corporation of the Municipality of Clarington
 2430 Durham Regional Hwy 2, Bowmanville, ON L1C 6C8

drawing
 GROUND FLOOR POWER AND COMMUNICATIONS DEMOLITION PLAN
 drawing scale

AS NOTED
 W025 project number
 24008 - DURHAM FIRE STATION

drawing no.

E3-02