

LEGEND (NOT ALL SYMBOLS SHOWN ON THIS LEGEND ARE NECESSARILY USED ON THIS PROJECT)

Table with 2 columns: VALVES and STEAM TRAPS. Lists various valve symbols and their descriptions.

Table with 2 columns: PIPE ACCESSORIES and MULTILINE VALVE SYMBOLS. Lists symbols for pipe accessories and multi-line valves.

Table with 2 columns: FIRE PROTECTION and SITE ELEMENTS. Lists symbols for fire protection and site elements.

Table with 2 columns: EXISTING/DEMOLISHED PIPING and FUEL PIPING. Lists symbols for existing/demolished piping and fuel piping.

Table with 2 columns: LAB GAS and MEDICAL GAS. Lists symbols for lab gas and medical gas.

Table with 2 columns: MEDICAL GAS VALVES and SPRINKLER AND FIRE PROTECTION. Lists symbols for medical gas valves and fire protection.

Table with 2 columns: VENTILATION and HEATING/COOLING PIPING. Lists symbols for ventilation and heating/cooling piping.

Table with 2 columns: STEAM TRAPS and PIPE FITTINGS. Lists symbols for steam traps and pipe fittings.

Table with 2 columns: PLUMBING & DRAINAGE and PIPE INSTRUMENTS. Lists symbols for plumbing/drainage and pipe instruments.

Table with 2 columns: CONTROLS AND CONTROL POINTS. Lists symbols for controls and control points.

Table with 2 columns: HEATING/COOLING PIPING. Lists symbols for heating/cooling piping.

Table with 2 columns: VENTILATION and HEATING/COOLING PIPING. Lists symbols for ventilation and heating/cooling piping.

Table with 2 columns: EQUIPMENT ACRONYMS. Lists various equipment acronyms.

Table with 2 columns: EQUIPMENT ACRONYMS. Lists various equipment acronyms.

DRAWING LIST table with columns: DRAWING, DESCRIPTION, SCALE. Lists drawing titles and scales.

GENERAL NOTES table with columns: NOTE, DESCRIPTION. Lists general notes for the drawing.

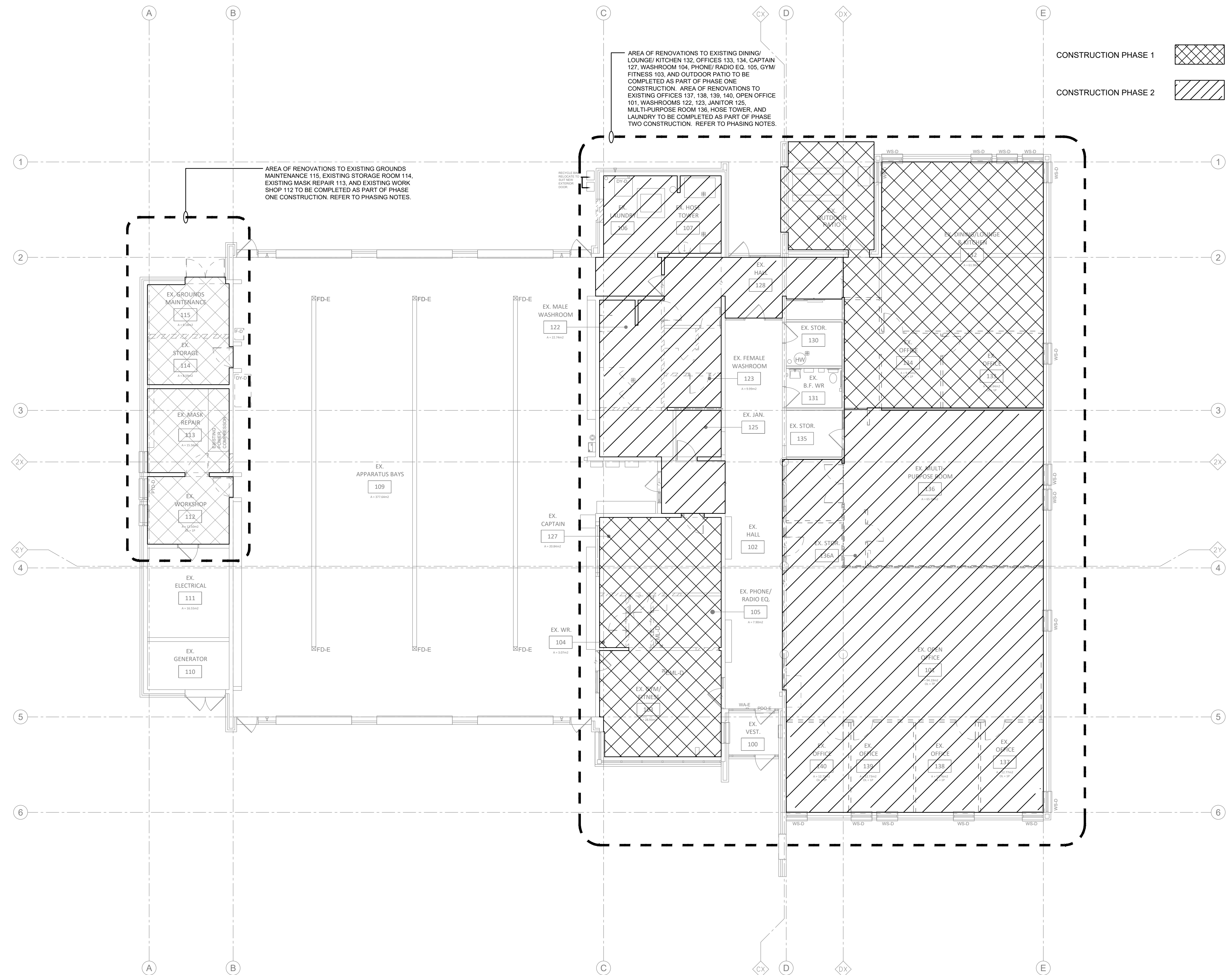
NOTE: THIS DRAWING IS NOT TO BE SCALED. THE CONTRACTOR IS RESPONSIBLE FOR THE VERIFICATION OF ALL SITE DIMENSIONS AND FOR NOTIFYING THE ARCHITECT OF ANY SITE CONDITIONS AND SITE MEASUREMENTS THAT ARE NOT CONSISTENT WITH THE DRAWINGS.

Table with 2 columns: no, date. Lists revision numbers and dates.

project RENOVATION TO CLARINGTON FIRE & EMERGENCY SERVICES STATION 1 The Corporation of the Municipality of Clarington

drawing MECHANICAL DRAWING LIST, LEGEND AND GENERAL NOTES drawing scale N.T.S.

M-00



MCW
MCW Consultants Ltd.
 Vancouver, Calgary
 Edmonton, Dauphin
 Winnipeg, Toronto
 Thunder Bay
 Ottawa, Montreal
 Saint John, Truro
 Halifax
 23335-01

Queen's Quay Terminal
 207 Queen's Quay West, Suite 615
 Toronto, Ontario, M5J 1A7
 Tel: 416-598-2920
 Fax: 416-598-5394
 www.mcw.com

1 GROUND FLOOR - KEY PLAN AND PHASING PLAN
 1:100

NOTE: THIS DRAWING IS NOT TO BE SCALED. THE CONTRACTOR IS RESPONSIBLE FOR THE VERIFICATION OF ALL SITE DIMENSIONS AND FOR NOTIFYING THE ARCHITECT OF ANY SITE CONDITIONS AND SITE MEASUREMENTS THAT ARE NOT CONSISTENT WITH THE DRAWINGS.

no.	revision	date

no.	Issue	date
01	Issue for Review	2024-06-07
02	Issue for Permit & Class C Costing	2024-06-17
03	Issue for Tender	2024-06-27

Project:
 RENOVATION TO CLARINGTON FIRE & EMERGENCY SERVICES STATION 1
 The Corporation of the Municipality of Clarington

2430 Durham Regional Hwy 2, Bowmanville, ON L1C 6C8
 drawing:
 MECHANICAL KEY PLAN AND PHASING PLAN
 drawing scale:
 AS NOTED

24008 - DURHAM FIRE STATION
 drawing no.

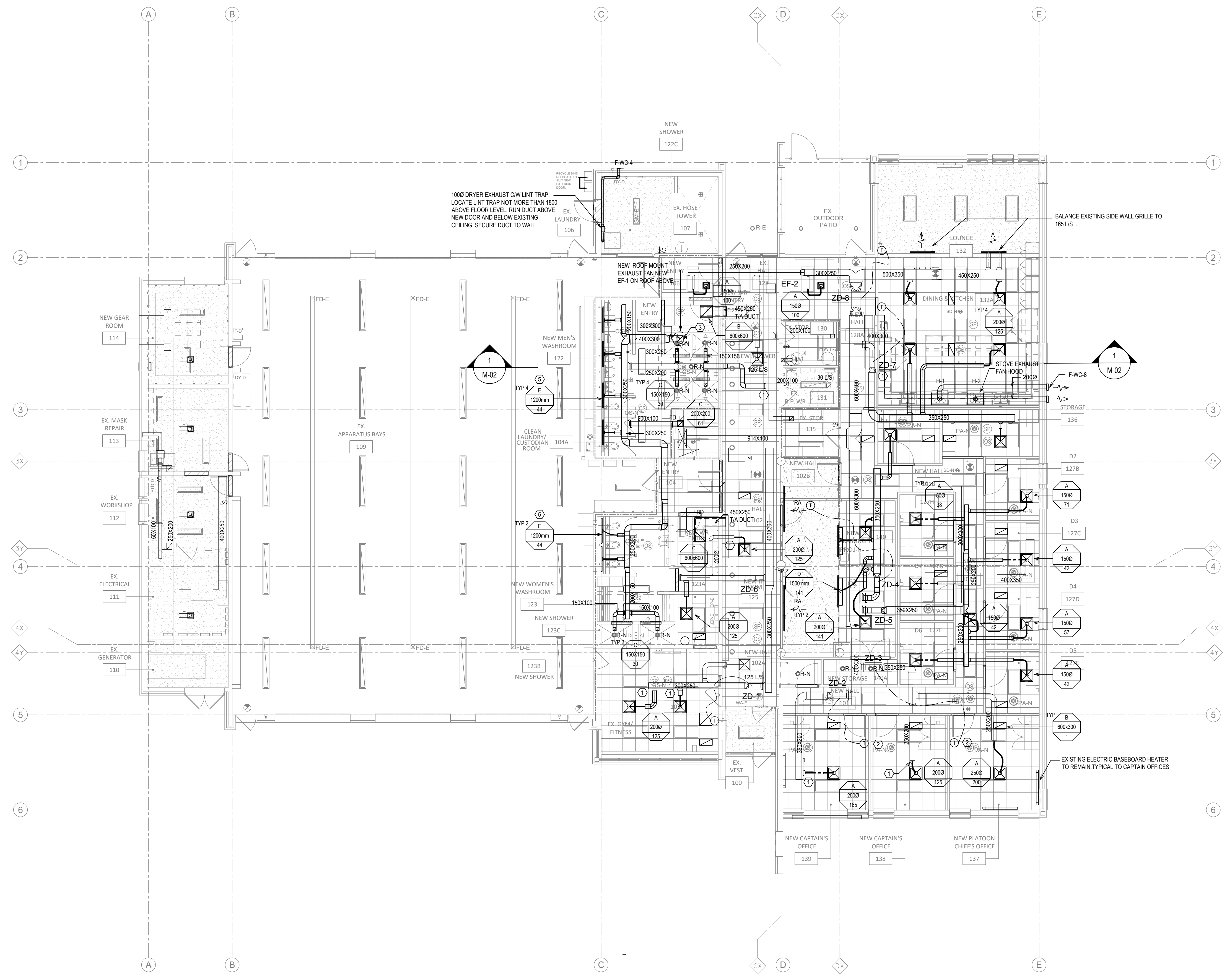
M-01

VENTILATION GENERAL NOTES:

NOTE:	DESCRIPTION:
1.	ALL DUCT ROUTING IS SHOWN DIAGRAMMATICALLY. CONFIRM EXACT ROUTING AND CO-ORDINATE WITH EXISTING DUCTWORK, PIPING, EQUIPMENT OR STRUCTURE ON SITE. PROVIDE OFFSETS AS REQUIRED.
2.	ALL LOW VELOCITY SUPPLY AIR DUCTWORK IS TO BE CLEANED INSIDE THE PROJECT AREA FROM DIFFUSER TO VAV BOX.
3.	BALANCE ALL GRILLES AND DIFFUSERS IN PROJECT AREA TO VOLUMES INDICATED.
4.	CO-ORDINATE EXACT TIE-IN AND SHUT DOWN DATES WITH OWNER. PROVIDE A MINIMUM OF ONE WEEK WRITTEN NOTICE PRIOR TO ANY SERVICE INTERRUPTIONS OR SHUT DOWNS.
5.	REFER TO ARCHITECTURAL FOR PROJECT PHASING AND CONSTRUCTION SCHEDULE.
6.	MAINTAIN SERVICES TO OCCUPIED AREAS. PROVIDE ALL TEMPORARY CONNECTIONS, RELOCATIONS, AND TEMPORARY EQUIPMENT REQUIRED TO ACCOMMODATE PHASING SCHEDULE.

VENTILATION CONSTRUCTION KEYNOTES:

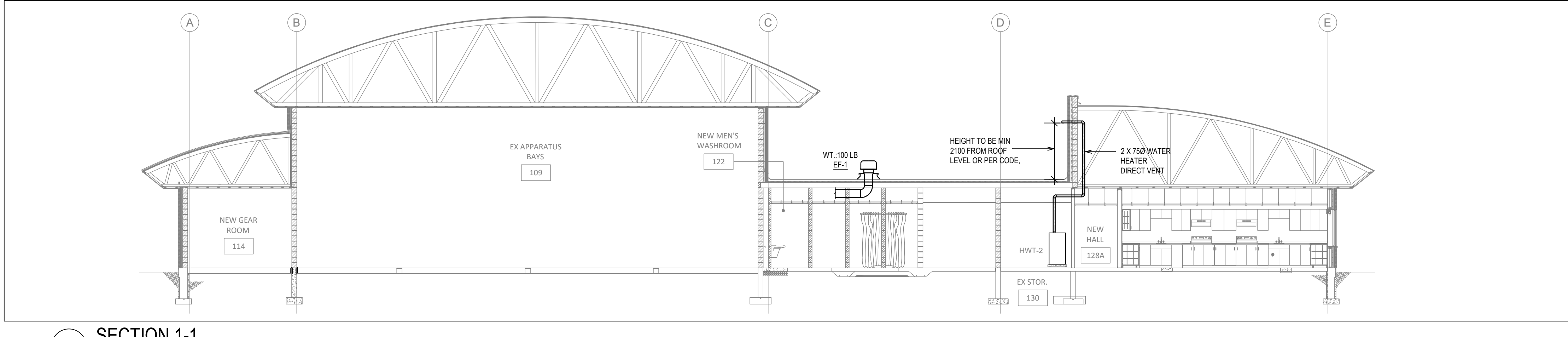
KEYNOTE:	DESCRIPTION:
①	CONNECT TO EXISTING DUCTWORK AT APPROXIMATELY THIS LOCATION. CONFIRM EXACT LOCATION ON SITE. TYPICAL.
②	NEW LOCATION FOR RELOCATED THERMOSTAT. TYPICAL.
③	300X300 EXHAUST DUCT RUN UP THROUGH EXISTING OPENING TO NEW ROOF EXHAUST FAN ON ROOF ABOVE.
④	NEW LOCATION FOR RELOCATED TERMINAL UNIT.
⑤	LINEAR DIFFUSER ON 25MM SLOT FOR EXHAUST PURPOSE. NON-ACTIVE SLOT COVER BY SHEET METAL. PAINT BLACK.



NOTE: THIS DRAWING IS NOT TO BE SCALED. THE CONTRACTOR IS RESPONSIBLE FOR THE VERIFICATION OF ALL SITE DIMENSIONS AND FOR NOTIFYING THE ARCHITECT OF ANY SITE CONDITIONS AND SITE MEASUREMENTS THAT ARE NOT CONSISTENT WITH THE DRAWINGS.

no.	revision	date

1 GROUND FLOOR - HVAC PLAN
 1:100



2 SECTION 1-1
 1:100

no.	Issue	date
01	Issue for Review	2024-06-07
02	Issue for Permit & Class C Costing	2024-06-17
03	Issue for Tender	2024-06-27

PROJECT: RENOVATION TO CLARINGTON FIRE & EMERGENCY SERVICES STATION 1
 The Corporation of the Municipality of Clarington
 2430 Durham Regional Hwy 2, Bowmanville, ON L1C 6C8
 Drawing: GROUND FLOOR HVAC PLAN
 Drawing scale: 1:100
 WSPR Project number: 24008 - DURHAM FIRE STATION
 Drawing no.:

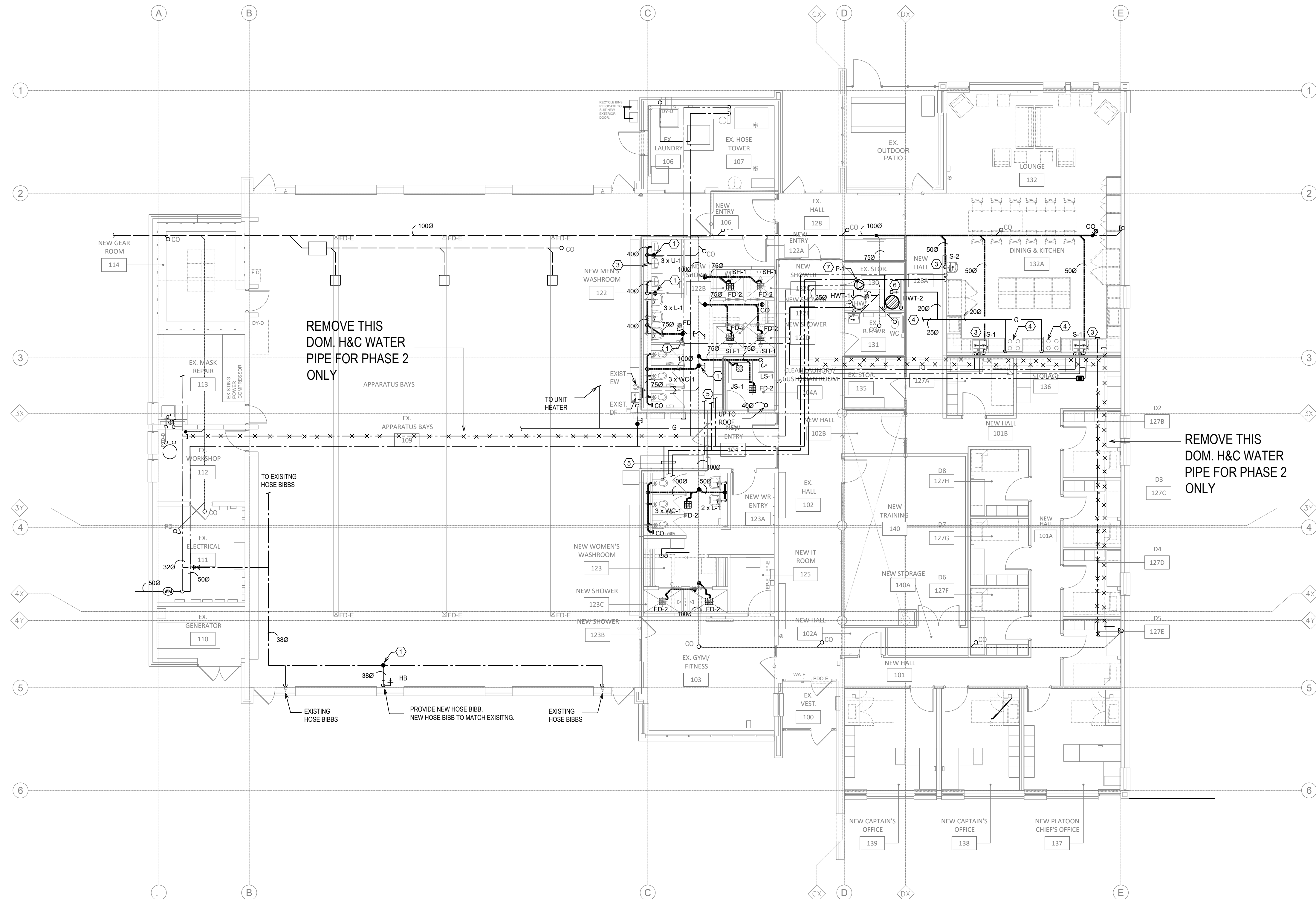
M-02

PLUMBING GENERAL NOTES:

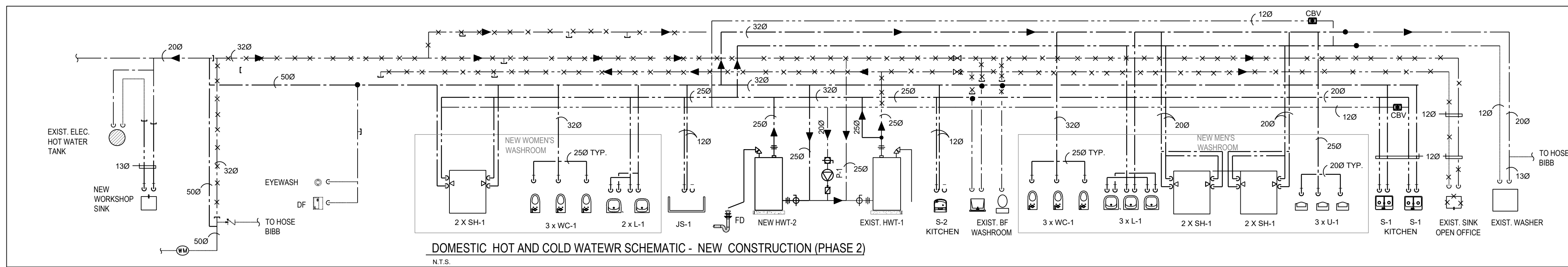
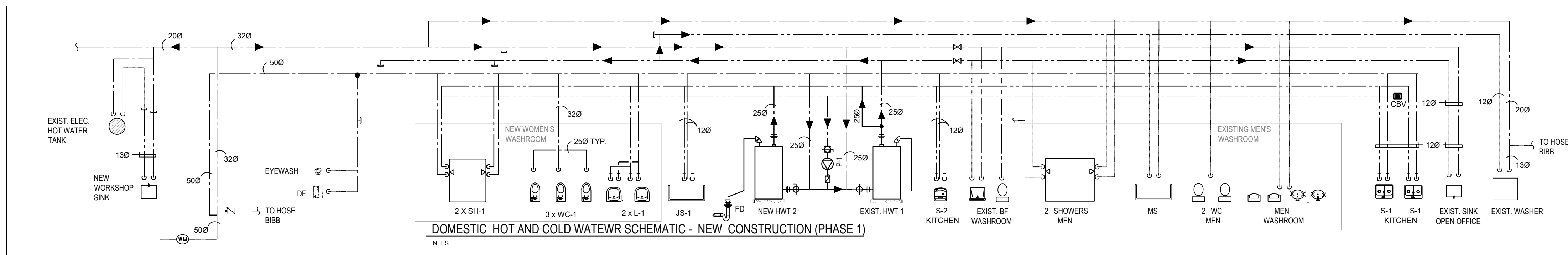
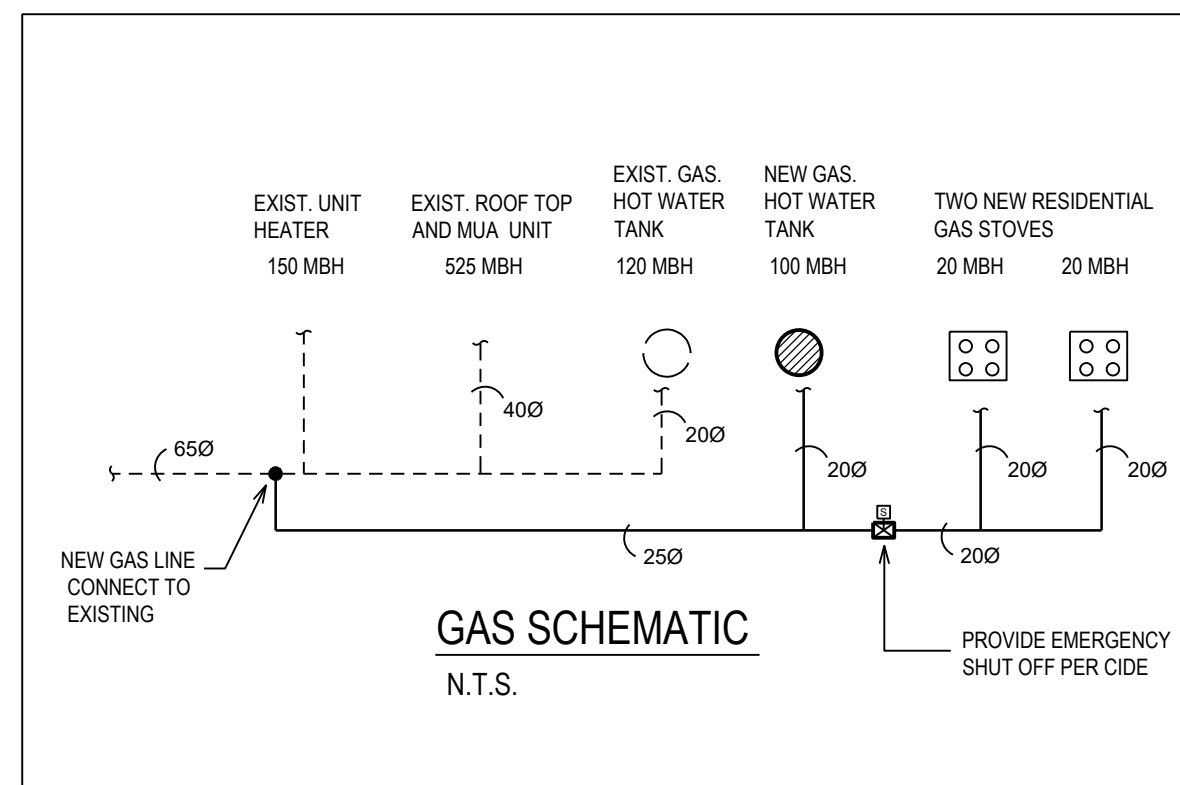
NOTE:	DESCRIPTION:
1.	ALL PIPE ROUTING IS SHOWN DIAGRAMMATICALLY. CONFIRM EXACT ROUTING AND CO-ORDINATE WITH EXISTING DUCTWORK, PIPING, EQUIPMENT OR STRUCTURE ON SITE. PROVIDE OFFSETS AS REQUIRED.
2.	CO-ORDINATE EXACT TIE-IN AND SHUT DOWN DATES WITH OWNER. PROVIDE A MINIMUM OF ONE WEEK WRITTEN NOTICE PRIOR TO ANY SERVICE INTERRUPTIONS OR SHUT DOWNS.
3.	REFER TO PLUMBING FIXTURE SCHEDULE FOR PIPE CONNECTION SIZES TO NEW FIXTURES.
4.	CLEANOUTS FOR SAN AND STW LINES ARE TO BE EXTENDED TO FLOOR ABOVE. PROVIDE FLOOR OR WALL CLEANOUT COVERS AS REQUIRED.
5.	REFER TO ARCHITECTURAL FOR PROJECT PHASING AND CONSTRUCTION SCHEDULE.
6.	MAINTAIN SERVICES TO OCCUPIED AREAS. PROVIDE ALL VALVING, TEMPORARY CONNECTIONS, RELOCATIONS, AND TEMPORARY EQUIPMENT REQUIRED TO ACCOMMODATE PHASING SCHEDULE.

PLUMBING CONSTRUCTION KEYNOTES:

KEYNOTE:	DESCRIPTION:
①	CONNECT TO EXISTING PIPEWORK AT APPROXIMATELY THIS LOCATION. CONFIRM EXACT LOCATION ON SITE.
②	NEW FIXTURE, REFER TO PLUMBING FIXTURE SCHEDULE.
③	PROVIDE DOMESTIC HOT AND COLD WATER SERVICE TO EACH PLUMBING FIXTURE PER PLUMBING FIXTURE SCHEDULE. TYPICAL.
④	PROVIDE 3/8" GAS LINE TO SERVE NEW GAS STOVE. TYPICAL OF 2. REFER GAS SCHEMATIC FOR CONTINUATION.
⑤	NEW DOMESTIC HOT AND COLD WATER SUPPLY TO PHASE 1 AND 2. REFER TO SCHEMATIC PHASE 1 AND PHASE 2 FOR CONTINUATION.
⑥	PROVIDE NEW HIGH EFFICIENCY DOMESTIC HOT WATER TANK. REFER TO EQUIPMENT SCHEDULE AND PLUMBING SCHEMATIC. PROVIDE DIRECT VENT UP THROUGH ROOF. CONNECT BROWN GAS LINE PER GAS SCHEMATIC.
⑦	PROVIDE NEW HOT WATER RE-CIRCULATION LOOP. REFER NEW RE-CIRCULATION PUMP PER EQUIPMENT SCHEDULE.



1 GROUND FLOOR - PLUMBING AND FIRE PROTECTION PLAN
1:100



NOTE: THIS DRAWING IS NOT TO BE SCALED. THE CONTRACTOR IS RESPONSIBLE FOR THE VERIFICATION OF ALL SITE DIMENSIONS AND FOR NOTIFYING THE ARCHITECT OF ANY SITE CONDITIONS AND SITE MEASUREMENTS THAT ARE NOT CONSISTENT WITH THE DRAWINGS.

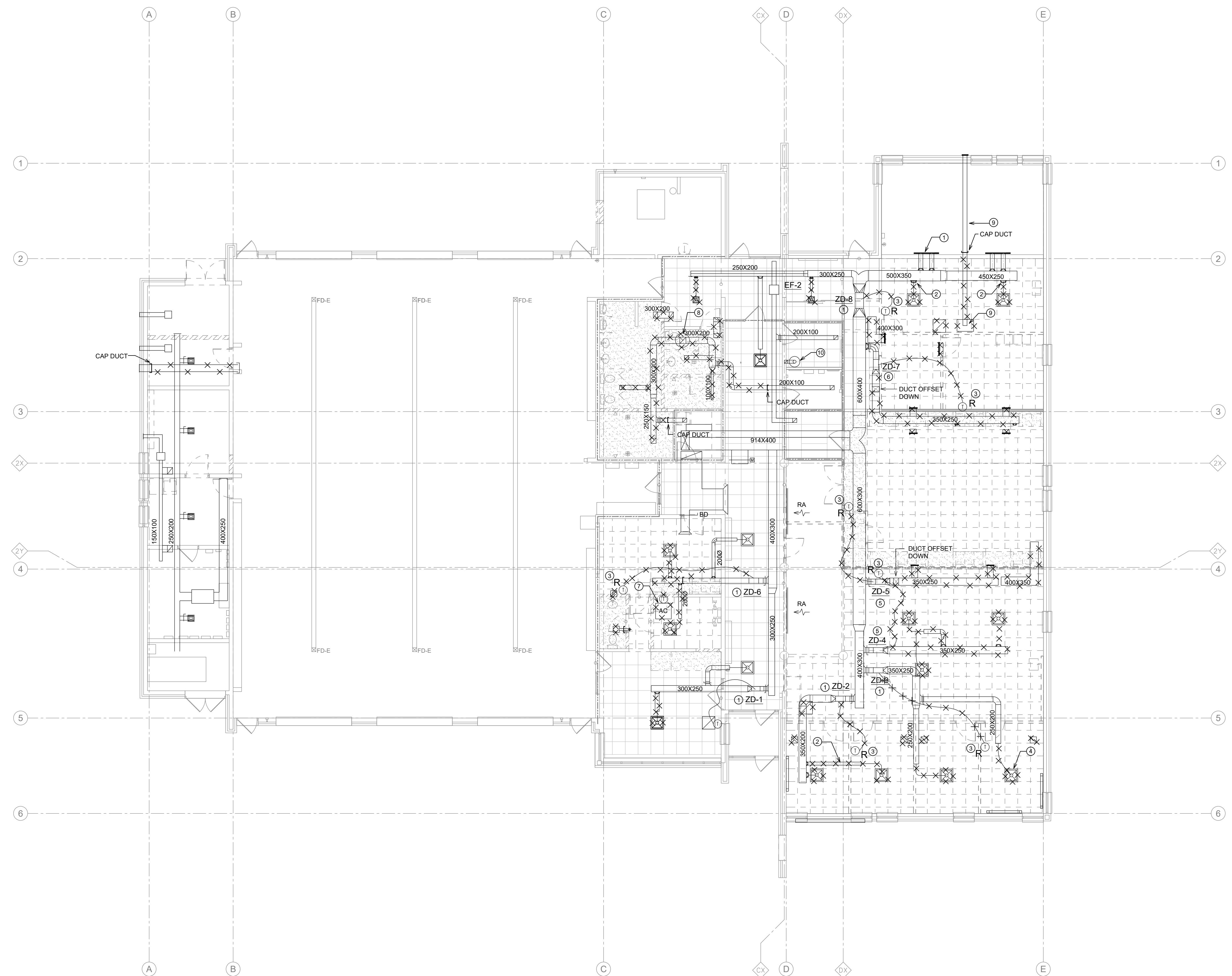
no.	revision	date

no.	Issue	date
01	Issue for Review	2024-06-07
02	Issue for Permit & Class C Costing	2024-06-17
03	Issue for Tender	2024-06-27

PROJECT
 RENOVATION TO CLARINGTON FIRE & EMERGENCY SERVICES STATION 1
 The Corporation of the Municipality of Clarington
 2430 Durham Regional Hwy 2, Bowmanville, ON L1C 6C8
 Drawing
GROUND FLOOR PLUMBING AND FIRE PROTECTION PLAN
 drawing scale
 1:100
 project number
 24008 - DURHAM FIRE STATION

M-03

VENTILATION DEMOLITION KEYNOTES:	
KEYNOTE	DESCRIPTION
①	EXISTING DUCTWORK AND VVT SYSTEM CONTROL DAMPER TO REMAIN, TYPICAL.
②	REMOVE EXISTING DUCTWORK, CAP BRANCH DUCT CONNECTOR AT MAIN DUCT FOR NEW DIFFUSER, TYPICAL.
③	REMOVE EXISTING VVT CONTROL, THERMOSTAT TO ACCOMMODATE DEMOLISHED WALL, KEEP THERMOSTAT AT SITE FOR RE-USE, COIL UP THERMOSTAT AND CONTROL WIRE BY THE EXISTING CONTROL DAMPER.
④	REMOVE EXISTING DIFFUSER, TYPICAL.
⑤	RELOCATE VVT DAMPER ZD-4, ZD-5 AND REMOVE EXISTING DOWNSTREAM DUCTWORK AND DIFFUSERS, REFER TO DRAWING M-01 FOR NEW LOCATION.
⑥	EXISTING VVT DAMPER ZD-7 TO REMAIN, REMOVE EXISTING DOWNSTREAM DUCTWORK AND DIFFUSERS, REFER TO DRAWING M-01 FOR NEW LOCATION.
⑦	REMOVE EXISTING FLOOR MOUNTED AIR CONDITION UNIT AND ASSOCIATE THERMOSTAT, PIPING AND PUMPED CONDENSATE DRAIN FROM UNIT TO JANITOR SINK.
⑧	REMOVE EXISTING ROOF MOUNT WASHROOM EXHAUST FAN AND EXHAUST DUCT AS SHOWN, CAP ROOF OPENING FOR NEW ROOF FAN AND NEW EXHAUST DUCT.
⑨	REMOVE EXISTING RANGE HOOD AND EXHAUST DUCT, THE FOOT OF EXISTING DUCT ABOVE DRYWALL CEILING TO BE ABANDONED IN CEILING SPACE.
⑩	EXISTING DOMESTIC HOT WATER TANK AND VENT PIPE TO REMAIN.



1 GROUND FLOOR - HVAC DEMOLITION PLAN
 1:100

NOTE: THIS DRAWING IS NOT TO BE SCALED. THE CONTRACTOR IS RESPONSIBLE FOR THE VERIFICATION OF ALL SITE DIMENSIONS AND FOR NOTIFYING THE ARCHITECT OF ANY SITE CONDITIONS AND SITE MEASUREMENTS THAT ARE NOT CONSISTENT WITH THE DRAWINGS.

no.	revision	date

no.	issue	date
01	Issue for Review	2024-06-07
02	Issue for Permit & Class C Coasting	2024-06-17
03	Issue for Tender	2024-06-27

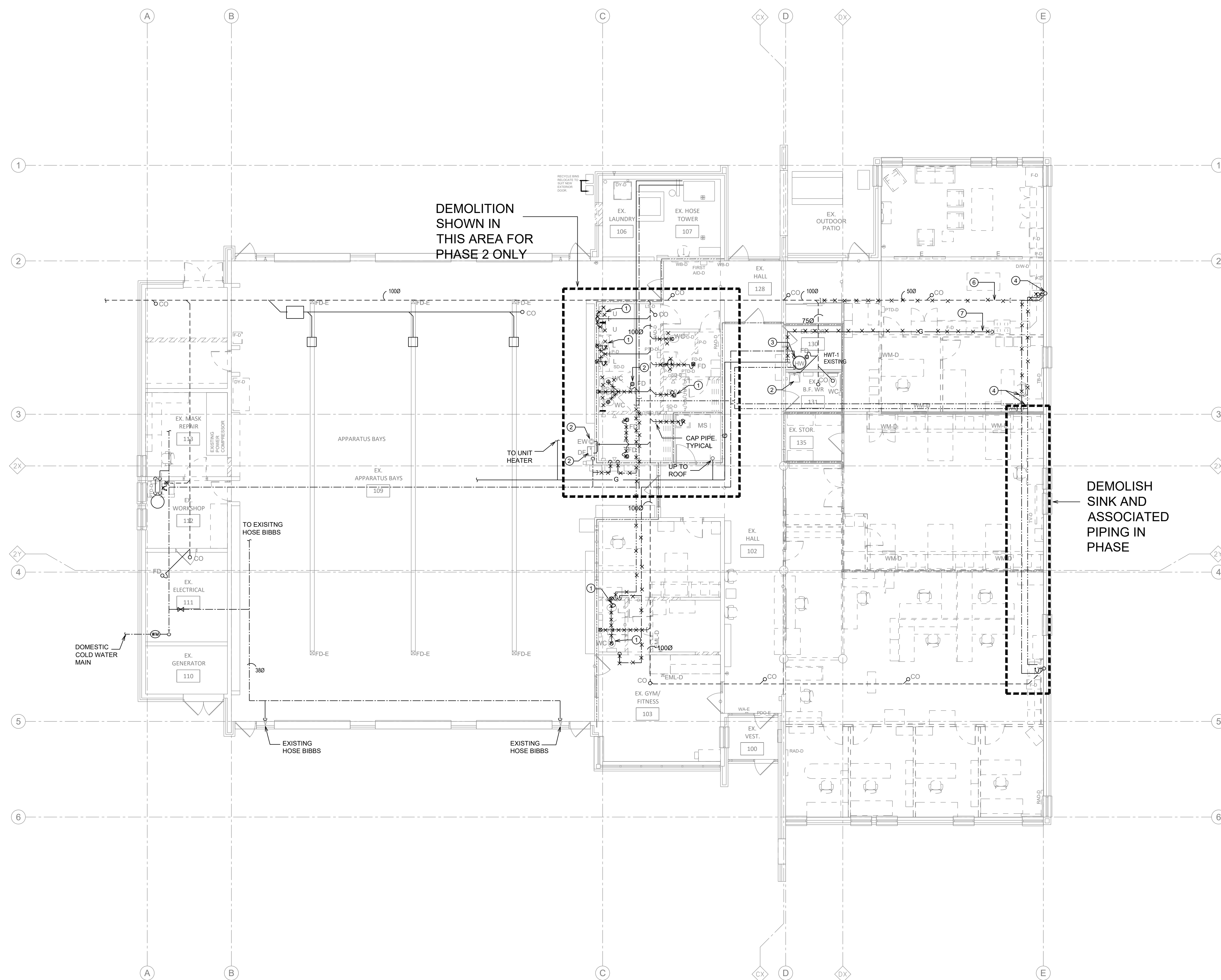
PROJECT
 RENOVATION TO CLARINGTON FIRE & EMERGENCY SERVICES STATION 1
 The Corporation of the Municipality of Clarington
 2430 Durham Regional Hwy 2, Bowmanville, ON L1C 6C8

DRAWING
 GROUND FLOOR HVAC DEMOLITION PLAN
 drawing scale:
 AS NOTED
 W4008 project number:
 24008 - DURHAM FIRE STATION

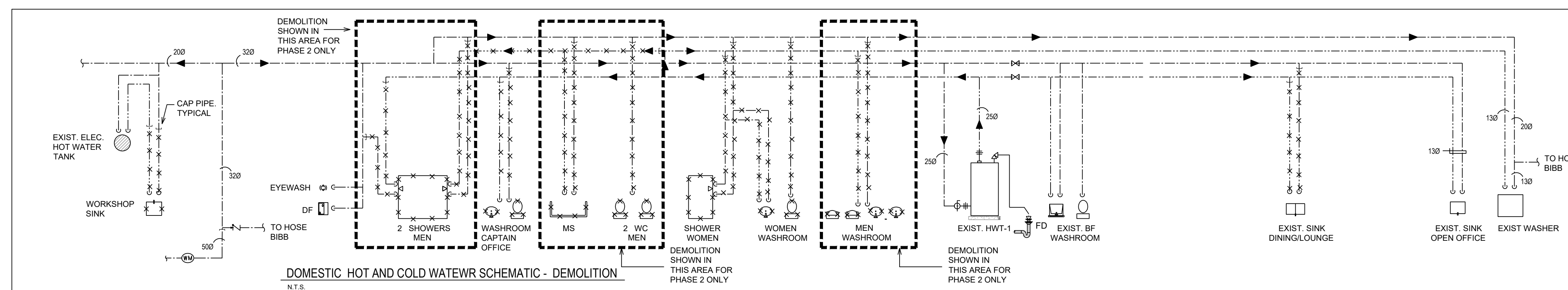
drawing no.:

M-04

KEYNOTE:	DESCRIPTION:
①	REMOVE AND DISPOSE EXISTING FIXTURES. CAP AND REMOVE ALL SANITARY FOR NEW RENOVATION. CAP DOMESTIC HOT AND COLD WATER BACK TO MAIN. TYPICAL.
②	EXISTING FLOOR DRAIN, PLUMBING FIXTURE AND ASSOCIATED PIPING TO REMAIN. TYPICAL.
③	EXISTING GAS FIRED HOT WATER TANK TO REMAIN.
④	REMOVE EXISTING SINK. KEEP VERTICAL WASTE PIPE AND PLUMBING VENT.
⑤	CAP AND REMOVE EXISTING DOMESTIC HOT AND COLD WATER LINE AS SHOWN.
⑥	REMOVE EXISTING 500 SANITARY SLOPE AT 2%, AND REPLACE WITH NEW 100% SANITARY PIPE RUN AT 1%, THIS PROVIDE CAPACITY AND NO SLOPE FOR NEW KITCHEN SINK FOR THE NEW KITCHEN SINK.
⑦	REMOVE EXISTING 1200 GAS LINE TO EXISTING STOVE.



1 GROUND FLOOR - PLUMBING AND FIRE PROTECTION DEMOLITION PLAN
 1:100



NOTE: THIS DRAWING IS NOT TO BE SCALED. THE CONTRACTOR IS RESPONSIBLE FOR THE VERIFICATION OF ALL SITE DIMENSIONS AND FOR NOTIFYING THE ARCHITECT OF ANY SITE CONDITIONS AND SITE MEASUREMENTS THAT ARE NOT CONSISTENT WITH THE DRAWINGS.

no.	revision	date

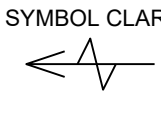
no.	issue	date
01	Issue for Review	2024-06-07
02	Issue for Permit & Class C Costing	2024-06-17
03	Issue for Tender	2024-06-27

PROJECT: RENOVATION TO CLARINGTON FIRE & EMERGENCY SERVICES STATION 1
 The Corporation of the Municipality of Clarington
 2430 Durham Regional Hwy 2, Bowmanville, ON L1C 6C8
 drawing: GROUND FLOOR PLUMBING & FIRE PROTECTION DEMOLITION PLAN
 drawing scale:
 AS NOTED
 WARD project number:
 24008 - DURHAM FIRE STATION

EXISTING ROOF-TOP UNIT SCHEDULE (FOR REFERENCE)

REF	MAKE	MODEL NUMBER	COOLING (MBH)	HEATING (MBH)		CFM	E.S.P. IN (KPA)	HP	ELECTRICAL			NOTES	
				INPUT	OUTPUT				VOLTS	PHASE	FREQ		
EX RTU	CARRIER	48TCFD14A3A3A1A2B0G0	140	250 / 205	5144	6000 MAX.	(0.2)	4	-	575	3	60	EXISTING ROOF TOP UNIT

REGISTERS, GRILLES & DIFFUSERS SCHEDULE

SYMBOL CLARIFICATION:  2-A-2000-91

2-QUANTITY
A-UNIT REFERENCE
2000-UNIT SIZE
94-AIR QUANTITY US

REF.	STYLE	MODEL NO.	MAKE	CLG. TYPE	REMARKS
A	SQUARE DIFFUSER	600X600-SCD-3C-B12	EH. PRICE	T-BAR	NECK SIZE REFER TO PLAN. C/W VOLUME CONTROL DAMPER
B	EGG CRATE RETURN GRILLE	600X300-80-B12	EH. PRICE	T-BAR	
C	EGG CRATE EXHAUST GRILLE	TB-80-B12	EH. PRICE	T-BAR	ALUMINUM GRILLE WHEN USE IN SHOWER. C/W EXHAUST PLENUM
D	SUPPLY BAR GRILLE	LBP-65mm SIZE-1500 LENGTH	EH. PRICE	SIDE WALL	C/W SUPPLY AIR PLENUM
E	LINEAR DIFFUSER	TBD3100-1 SLOT-1200MM	EH. PRICE	T-BAR	1500 INLET, 1200 MM LENGTH. C/W YOUNG REGULATOR
F	WALL BOX	WC-4 (1000), OR WC-8(2000)	GREENHECK	SIDE WALL	FOR EXTERIOR USE

NEW KITCHEN RANGE HOOD SCHEDULE

REF.	L/S (C.F.M.)	E.S.P. (in)	SERVING	AMPS	POWER (HP)	MANUF. MODEL	NOTES
H-1	94 (220)	-	KITCHEN	2.5	120/160	BROAN 4600	STYLING / COLOR: STAINLESS STEEL
H-2	94 (220)	-	KITCHEN	2.5	120/160	BROAN 4600	STYLING / COLOR: STAINLESS STEEL

FAN SCHEDULE

* ALTERNATIVE MANUFACTURER: JENCO, COOK

REF.	LOCATION / SERVING	AIR FLOW L/S (C.F.M.)	E.S.P. (in. WC)	MOTOR HP (WATT)	RPM	MANUF.	MODEL	ELECTRICAL			REMARK
								VOLT	PHASE	HZ	
NEW EF-1	WASHROOMS	536 (1140)	0.375	1/4	1450	GREENHECK	GB-101	115	1	60	BELT DRIVE. CONTROL - INTERLOCK WITH LIGHT.
EF-1	GENERAL EXHAUST	-	-	-	-	-	-	-	-	-	EXISTING EXHAUST FAN. FOR REFERENCE ONLY

PLUMBING FIXTURE SCHEDULE

FIXTURE SYMBOL	DESCRIPTION	MANUFACTURER / MODEL NO.	CONNECTION SIZES (MM)				TRIM No.	REMARKS
			C.W.	H.W.	DRAIN	VENT		
WC-1	WATER CLOSET WALL HUNG FLUSH VALVE	AMERICAN STANDARD APFWALL MILLENNIUM FLOWISE. MODEL: 3551101.020. WALL HUNG. 1.6 GPF. ELONGATED BOWL. SLOAN G2 OPTIMA PLUS 8116-1 EXPOSED FLUSH VALVE. 1.28 GPH. FLUSH ELECTRONIC OVERRIDE BUTTON. BATTERY OPERATED.	25	-	75	32	CENTOCO #820TSSFE. 001 HEAVY DUTY SEAT C/W COVER FOR ELONGATED BOWL. C/W WATTS ISCA-101-LR CARRIER SS SWELF- SUSTAINING CHECK RINGS, METAL FLAT WASHERS, SS POSTS AND NUTS. FLOOR FLANGE	FLUSH VALVE CONTROL. TO BE ON THE NON-GRAB BAR SIDE. INSTALL AND TRIM VACUUM BREAKER SO SENSOR IS 3'-1/2" (90 mm) ABOVE TOILET SEAT. SEAT COVER TO BE INSTALLED AS PER REGIONAL REQUIREMENT AND SENSOR TO BE INSTALLED AT HEIGHT ABOVE COVER OPEN POSITION.
U-1	WALL HUNG URINAL VITREOUS CHINA	AMERICAN STANDARD WASHBROOK FLOWISE. MODEL: 699001.020.338155-203.000A. 1 GPF. TOP SPUD. SLOAN SL-ECOS-8186-0.13 AUTO MATIC NO-TOUCH EXPOSED URINAL FLUSHOMETER. 0.125 GPF. BATTERY POWERED.	20	-	50	32	C/W WATTS CA-321 CARRIER	
SH-1	SHOWER	CHICAGO FAUCET. MODEL SH-PBI-00-04. PRESSURE BALANCING TUB AND SHOWER SYSTEM WITH SHOWER HEAD, HAND SPRAY AND DIVERTER TUB SPOUT OPTION. ADA. ASME. CSA APPROVED	12	12	50	32	C/W WATTS CA-321 CARRIER	SUPPLIES - LAWLER 570-88820 BELOW DECK MECHANICAL WATER MIXING VALVE.
L-1	WALL HUNG BASIN VITREOUS CHINA CSA APPROVED WHITE FINISH	AMERICAN STANDARD MODEL: LUCERNE 0396.421.020. CENTER HOLES ONLY. SLOAN SF-2450. BAT-CP-0.5GPM. MLM-IR-FCTS-F. ELECTRONIC FAUCET. BATTERY OPERATED. CHROME PLATED FINISH. BRASS CENTER HOLES ONLY. C/W SF-746. 0.5 GPM. VANDAL RESISTANT. NON-AGGREGATING. MULTI-LAMINAR FLOW SPRAY OUTLET.	12	12	32	32	MCGUIRE #155WC. OPEN GRID DRAIN. MCGUIRE #LPH109RS. POLISHED BRASS FAUCET SUPPLIES. WATTS #CA-411 BASIN CARRIER. MCGUIRE #887ZC. P-TRAP.	SUPPLIES - LAWLER 570-88820 BELOW DECK MECHANICAL WATER MIXING VALVE.
LS-1	LAUNDRY SINK COUNTER MOUNT DROP IN	FRANKE COMMERCIAL LB57310P-1.3 S.S. SINK. DEEP COUNTER MOUNTED. 203MM (8") CENTERSET.	12	12	40	32	CHICAGO FAUCET #897-RCF. TWO HANDLE MOP SINK FAUCET.	SUPPLIES - MCGUIRE LFK165LK LEAD FREE, WITH CHROME PLATED FINISH.
JS-1	FLOOR MOUNTED SINGLE COMPARTMENT JANITOR SINK	STERN WILLIAM JANITOR SINK WITHOUT FAUCET LEDGE. MODEL SB-902-T-35-140BP	12	12	75	32	CHICAGO WALL HUNG MANUAL MOP SINK FAUCET. MODEL 897-RCF. ADJUSTABLE SUPPLY ARMS. 1/4" TURN CERAMIC CARTRIDGE. NO FLOW RESTRICTOR. THREADED HOSE END.	SUPPLIES - LAWLER 570-88820 THERMOSTATIC MASTER WATER MIXING CONTROL VALVE. 1.9-30 LPM (0.5-8 GPM) RANGE FOR FLOWRATE.
FD-2	FLOOR DRAIN	WATTS - 200-L REFER TO SPECIFICATIONS - PLUMBING SECTION	-	-	75	32	EPOXY COATED. CAST IRON BODY. VANDAL PROOF WITH PRIMER CONNECTION WITH PLUG	FINISHED FLOOR, SQUARE FLOOR DRAIN.

PUMP SCHEDULE

REF.	SERVICE	LOCATION	FLOW (GPM)	HEAD (FT)	RPM	MANUFACTURER	TYPE/SIZE	ENERGY REQUIRED (KW)	MOTOR SIZE (HP)	POWER SUPPLY	
										VOLTS	PHASE
P-1	DOM. HOT WATER RECIRCULATION	STORAGE ROOM	1	30	2940	BELL & GOSSETT	NBF-22U	-	1/25	120	1

DOMESTIC HOT WATER HEATERS SCHEDULE

REF.	DESCRIPTION	GAS INPUT MBH (KW)	GAS TRAIN INLET PRESS. (kPa)	AT 100' (55.5°C) TEMP RISE (G/H)	TANK CAPACITY (US GAL)	MANUFACTURER	MODEL	POWER SUPPLY		
								AMPS	VOLTS	PHASE
DHW-1	EXISTING GAS HOT WATER HEATER	120	-	116	71	AO SMITH	BTRC120-118	5	120	1
DHW-2	NEW GAS HOT WATER HEATER	100	-	128	75	AO SMITH	6075100NPDVH02 (96% HIGH EFFICIENCY)	5	120	1

MCW *MCW Consultants Ltd.*
 Vancouver, Calgary, Edmonton, Dauphin, Winnipeg, Toronto, Thunder Bay, Ottawa, Montreal, Saint John, Truro, Halifax
 Queen's Quay Terminal, 207 Queen's Quay West, Suite 615, Toronto, Ontario, M5J 1A7
 Tel: 416-598-2920, Fax: 416-598-5394, www.mcw.com

2335-01

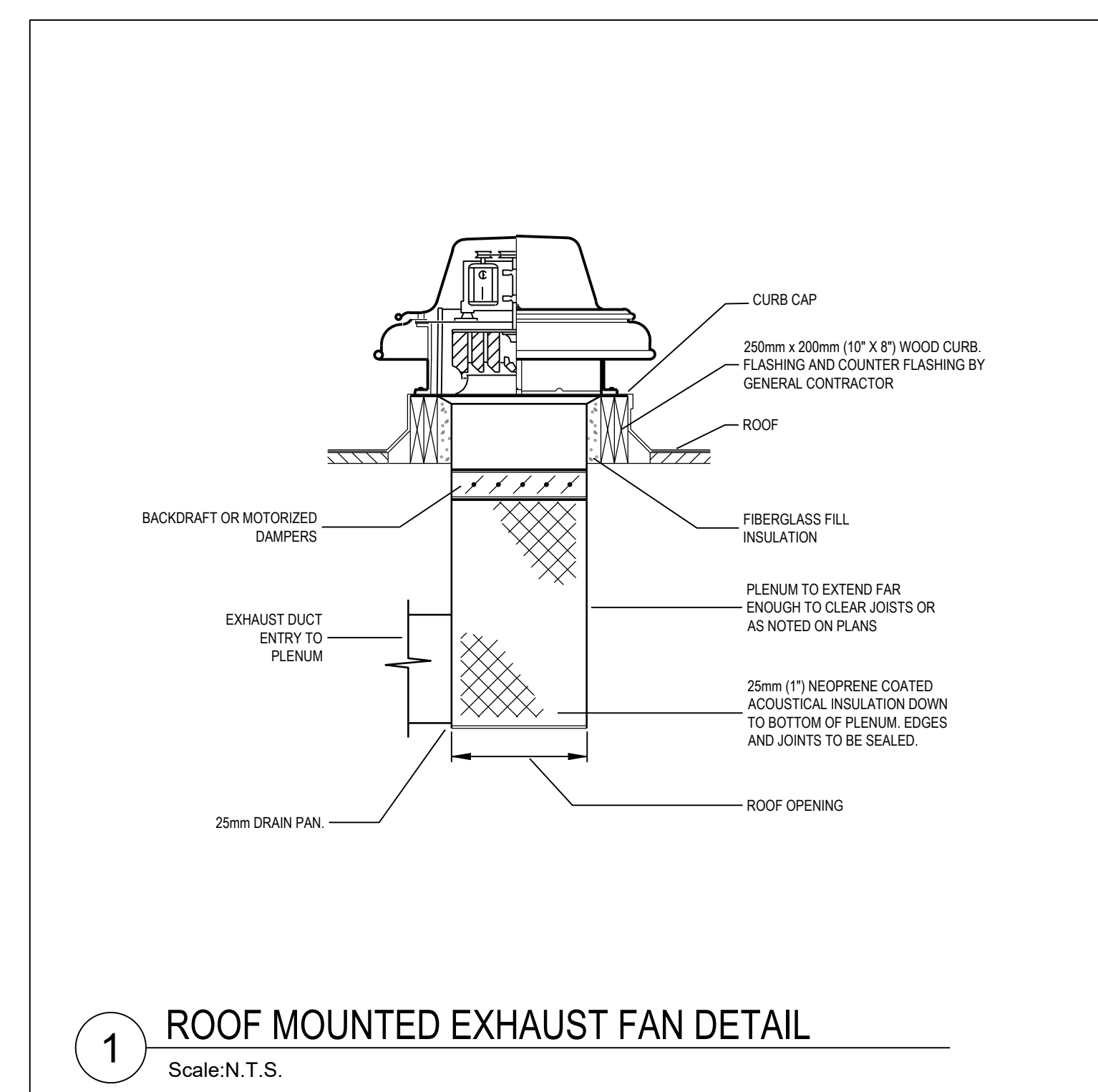
NOTE: THIS DRAWING IS NOT TO BE SCALED. THE CONTRACTOR IS RESPONSIBLE FOR THE VERIFICATION OF ALL SITE DIMENSIONS AND FOR NOTIFYING THE ARCHITECT OF ANY SITE CONDITIONS AND SITE MEASUREMENTS THAT ARE NOT CONSISTENT WITH THE DRAWINGS.

no.	revision	date

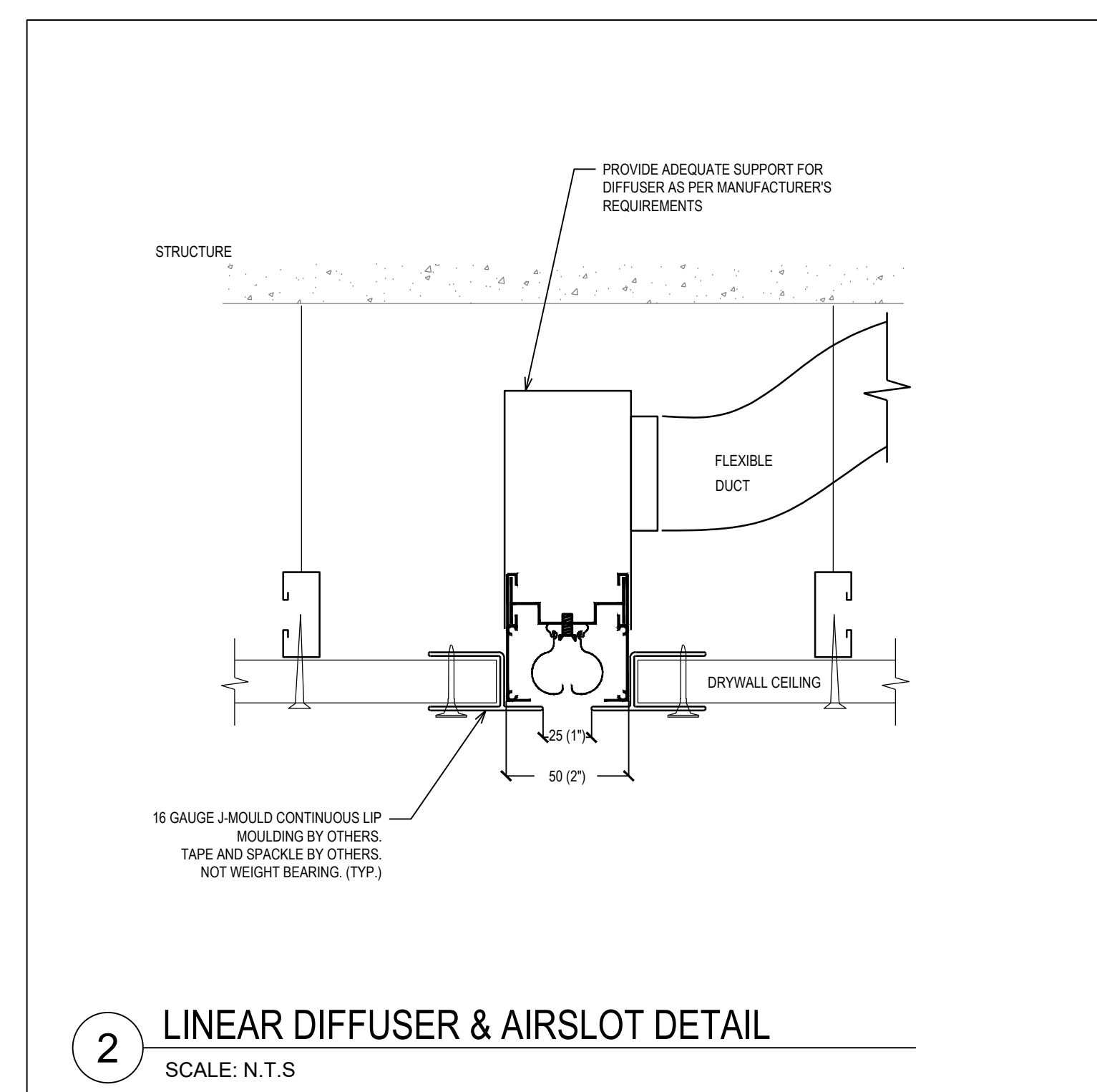
no.	issue	date
01	Issue for Review	2024-06-07
02	Issue for Permit & Class C Coating	2024-06-17
03	Issue for Tender	2024-06-27

project
 RENOVATION TO CLARINGTON FIRE & EMERGENCY SERVICES STATION 1
 The Corporation of the Municipality of Clarington
 2430 Durham Regional Hwy 2, Bowmanville, ON L1C 6B8
 drawing
 EQUIPMENT SCHEDULE
 drawing scale
 AS NOTED
 project number
 24008 - DURHAM FIRE STATION

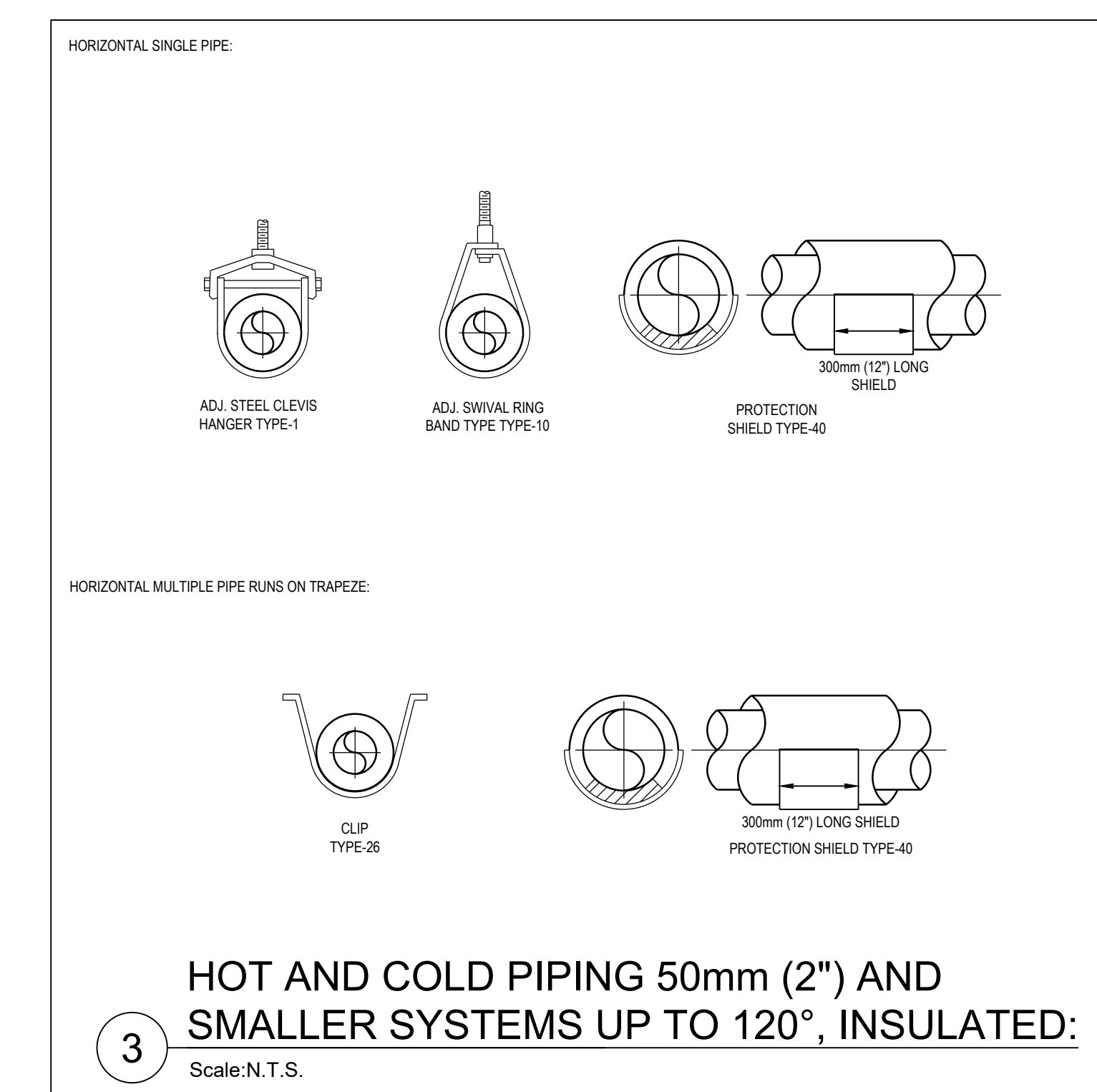
drawing no.
M-06



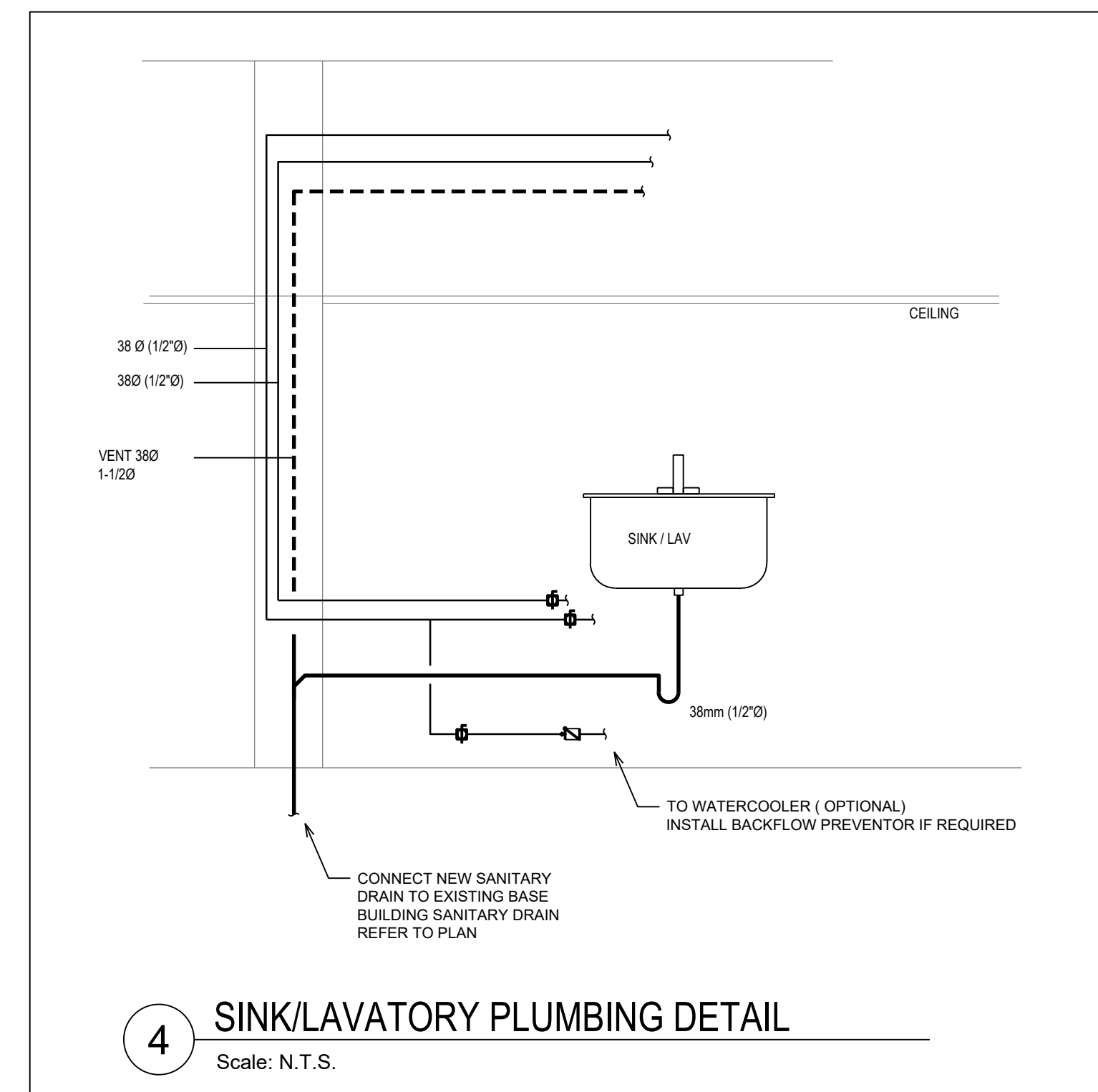
1 ROOF MOUNTED EXHAUST FAN DETAIL
Scale: N.T.S.



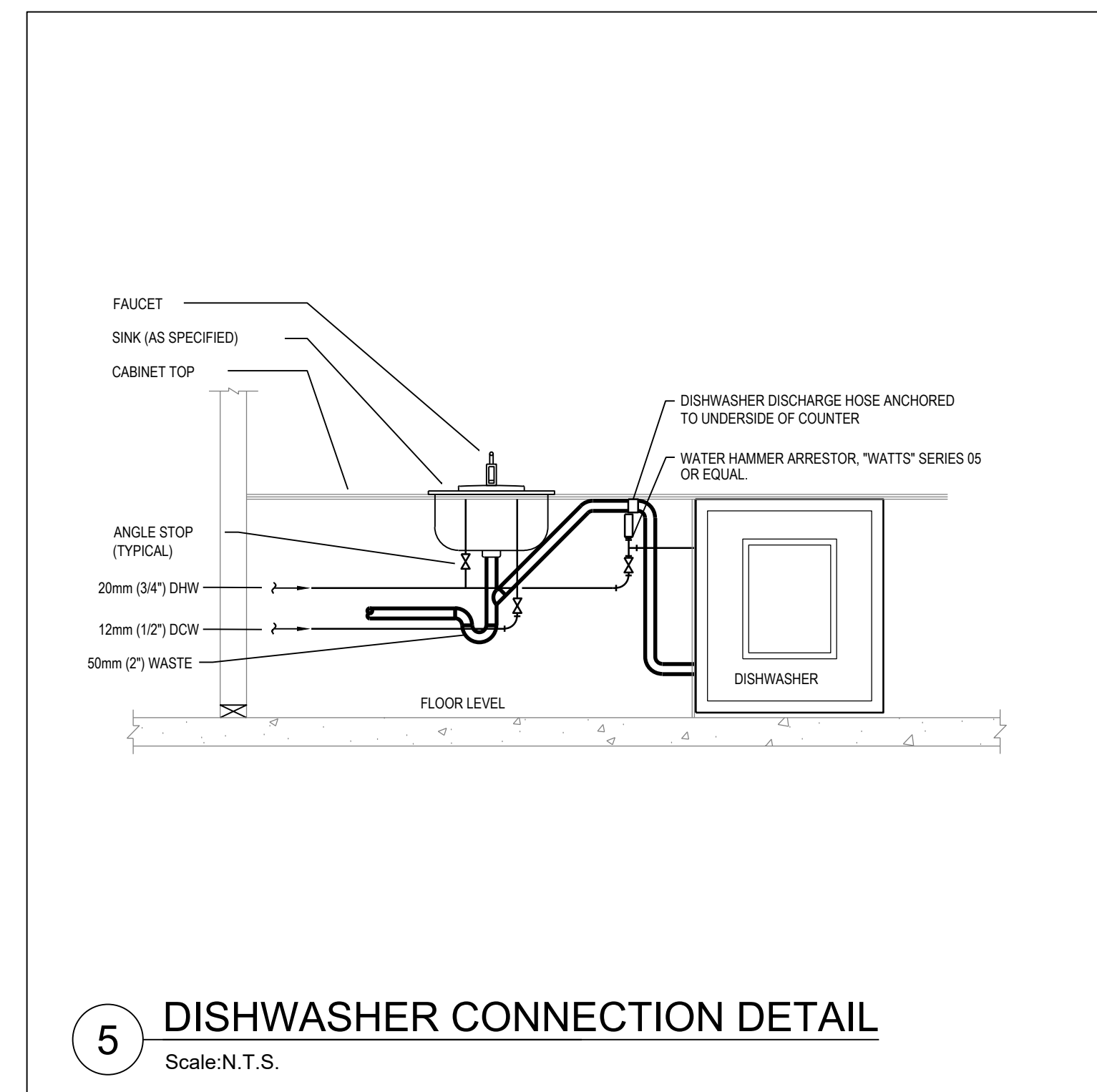
2 LINEAR DIFFUSER & AIRSLOT DETAIL
SCALE: N.T.S.



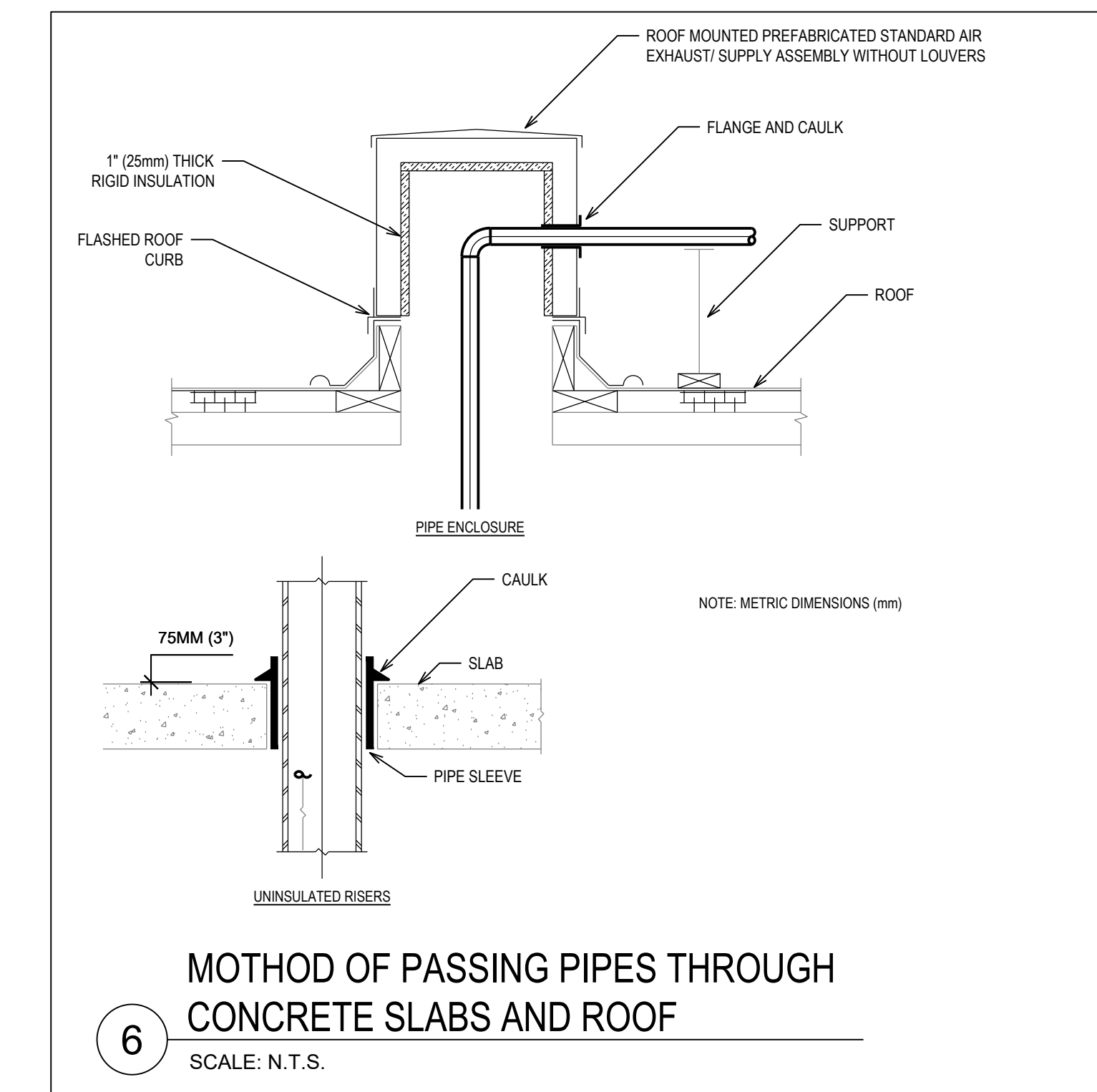
3 HOT AND COLD PIPING 50mm (2") AND SMALLER SYSTEMS UP TO 120°, INSULATED:
Scale: N.T.S.



4 SINK/LAVATORY PLUMBING DETAIL
Scale: N.T.S.



5 DISHWASHER CONNECTION DETAIL
Scale: N.T.S.



6 METHOD OF PASSING PIPES THROUGH CONCRETE SLABS AND ROOF
SCALE: N.T.S.

NOTE: THIS DRAWING IS NOT TO BE SCALED. THE CONTRACTOR IS RESPONSIBLE FOR THE VERIFICATION OF ALL SITE DIMENSIONS AND FOR NOTIFYING THE ARCHITECT OF ANY SITE CONDITIONS AND SITE MEASUREMENTS THAT ARE NOT CONSISTENT WITH THE DRAWINGS.

no.	revision	date

no.	issue	date
B1	Issue for Review	2024-06-07
B2	Issue for Permit & Class 'C' Costing	2024-06-17
B3	Issue for Tender	2024-06-27

Project: RENOVATION TO CLARINGTON FIRE & EMERGENCY SERVICES STATION 1
The Corporation of the Municipality of Clarington

2430 Durham Regional Hwy 2, Bowmanville, ON L1C 6C8

Drawing: MECHANICAL DETAILS

AS NOTED

4008 - DURHAM FIRE STATION

drawing no. M-07