

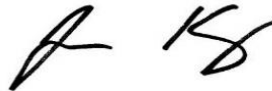
## DESIGNATED SUBSTANCES AND HAZARDOUS MATERIALS REASSESSMENT REPORT



**Family Residence Building  
4222 Kingston Road  
Toronto, Ontario  
M1E 2M6**

*Performed for:*  
**Inder Bhamra (he/him/his), EP, PMP, CSM  
Environmental Coordinator - Project Management Office  
City of Toronto - Corporate Real Estate Management**

*Performed by:*  
**Safetech Environmental Limited**



**Jason King**  
Occupational Health and Safety Technician

*Reviewed by:*



**John Mazzulli, B.A.**  
Project Coordinator

**Date of Issue: December 14, 2023  
Safetech Project # 1-3230268**

## EXECUTIVE SUMMARY

Safetech Environmental Limited (Safetech) was commissioned by the City of Toronto – Corporate Real Estate Management to conduct a reassessment for designated substances and hazardous materials for the Family Residence Building located at 4222 Kingston Road, Toronto, Ontario.

The objective of the assessment was to determine the presence, location, condition and quantities of previously identified designated substances and other hazardous materials and, if necessary, provide recommendations based on findings to assist the City of Toronto to achieve regulatory compliance.

A summary of the assessment results and our findings are provided in the following table. This table should be considered a summary only. Complete commentary on each of the designated substances can be found in the body of this report. The executive summary is not intended to substitute for the complete report, nor does it discuss certain specific issues documented in the report. Please refer to the Results, Recommendations and Appendices of our report for additional details.

**Table 1: Summary of Hazardous Materials and Designated Substances**

Designated Substance	Findings
Asbestos	The following building materials are suspected to be asbestos-containing: - exterior window caulking; and - roofing materials.
Lead	White paint identified on drywall ceiling within the Laundry's Storage Room (1-21) was observed to be in poor condition. The paint sample was determined to be below the level of detection (0.009%lead content) and is not considered to be lead-containing.
	The following materials are assumed to be lead-containing: - paints and surface coatings (not sampled); - glazing on ceramic tiles; - solder in copper pipe fittings; and - solder in electrical components.
Mercury	No sources of mercury were observed in the subject area.
Silica	Building materials identified that are suspected to contain crystalline silica include: - concrete; - masonry building materials; and - drywall.
Other Designated Substances	No other designated substances are expected to be present in any significant quantities or in a form that would represent an exposure concern.
<b>Other Hazardous Materials</b>	<b>Findings</b>
Urea Formaldehyde Foam Insulation	No UFFI was identified or is suspected in the subject area.

Mould Contamination	Moderate water-damaged drywall ceiling identified in the Laundry's Storage Room (1-21).
Pest Infestation	No pest infestations were observed in the areas assessed.
Polychlorinated Biphenyls	No equipment was identified to contain PCBs.
Ozone Depleting and Global Warming Substances	No equipment was observed that is suspected to contain ozone depleting and/or global warming substances

This assessment satisfies the Owner's requirements under Section 30 of the Ontario Occupational Health and Safety Act (OHSA), Revised Statutes of Ontario 1990, as amended.

Should you have any questions regarding the information contained in the report, please contact our office.

## Table of Contents

<b>1.0</b>	<b>INTRODUCTION</b> .....	<b>1</b>
1.1	Scope of Work .....	2
<b>2.0</b>	<b>METHODOLOGY</b> .....	<b>2</b>
<b>3.0</b>	<b>ASSESSMENT OF DESIGNATED SUBSTANCES</b> .....	<b>5</b>
<b>3.1</b>	<b>Asbestos Containing Materials</b> .....	<b>5</b>
3.1.1	Results .....	5
3.1.2	Previously Laboratory Analytical Results .....	6
3.1.3	Recommendations .....	6
<b>3.2</b>	<b>Lead Containing Materials</b> .....	<b>6</b>
3.2.1	Results .....	6
3.2.2	Recommendations .....	6
<b>3.3</b>	<b>Mercury Containing Materials</b> .....	<b>7</b>
3.3.1	Results .....	7
3.3.2	Recommendations .....	7
<b>3.4</b>	<b>Silica Containing Materials</b> .....	<b>7</b>
3.4.1	Results .....	7
3.4.2	Recommendations .....	7
<b>3.5</b>	<b>Acrylonitrile</b> .....	<b>8</b>
3.5.1	Results .....	5
3.5.2	Recommendations .....	5
<b>3.6</b>	<b>Arsenic</b> .....	<b>8</b>
3.6.1	Results .....	5
3.6.2	Recommendations .....	5
<b>3.7</b>	<b>Benzene</b> .....	<b>8</b>
3.7.1	Results .....	5
3.7.2	Recommendations .....	5
<b>3.8</b>	<b>Coke Oven Emissions</b> .....	<b>9</b>
3.5.1	Results .....	9
3.5.2	Recommendations .....	9
<b>3.9</b>	<b>Ethylene Oxide</b> .....	<b>9</b>
3.9.1	Results .....	9
3.9.2	Recommendations .....	9
<b>3.10</b>	<b>Isocyanates</b> .....	<b>9</b>
3.10.1	Results .....	9
3.10.2	Recommendations .....	9

<b>3.11 Vinyl Chloride</b> .....	<b>9</b>
3.11.1 <i>Results</i> .....	9
3.11.2 <i>Recommendations</i> .....	9
<b>3.12 Mould Contaminated Materials</b> .....	<b>9</b>
3.12.1 <i>Results</i> .....	9
3.12.2 <i>Recommendations</i> .....	10
<b>3.13 Polychlorinated Biphenyls (PCBs)</b> .....	<b>10</b>
3.13.1 <i>Results</i> .....	10
3.13.2 <i>Recommendations</i> .....	10
<b>3.14 Ozone Depleting and Global Warming Substances</b> .....	<b>10</b>
3.14.1 <i>Results</i> .....	10
3.14.2 <i>Recommendations</i> .....	10
<b>4.0 CORRECTIVE ACTIONS</b> .....	<b>10</b>
<b>5.0 LIMITATIONS</b> .....	<b>10</b>
<b>Appendix I - Hazardous Materials Room by Room Inventory Sheet</b> .....	<b>12</b>
<b>Appendix II – Results of Bulk Sample Analysis</b> .....	<b>13</b>
<b>Appendix III – Site Drawings</b> .....	<b>14</b>
<b>Appendix IV – Site Photographs</b> .....	<b>15</b>
<b>Appendix V – Corrective Actions Inspection Report</b> .....	<b>16</b>

December 14, 2023

**City of Toronto – Corporate Real Estate Management**  
55 John Street Toronto, Ontario  
M5V 3C6

**Attention: Inder Bhamra (he/him/his), EP, PMP, CSM**  
Environmental Coordinator - Project Management Office

**RE: Designated Substances and Hazardous Materials Reassessment**  
**Family Residence Building**  
**4222 Kingston Road, Toronto, Ontario**

---

## 1.0 INTRODUCTION

Safetech Environmental Limited (Safetech) was contracted by the City of Toronto – Corporate Real Estate Management Office to conduct a designated substances and hazardous materials reassessment survey for Family Residence Building located at 4222 Kingston Road, Toronto, Ontario. The site investigation was conducted on November 20, 2023.

The objective of this study was to determine the extent and condition of previously identified designated substances and other hazardous materials within the subject building as required annually by the City of Toronto – Corporate Real Estate Management and Ontario Regulation 278/05 (O.Reg. 278/05), “Designated Substance - Asbestos on Construction Projects and in Buildings and Repair Operations”. The survey also included an evaluation of the degree of possible exposure and assessing requirements for any further investigation or remedial action, if necessary.

The survey included a review and inspection of individual rooms in order to determine the presence and extent of detected designated substances and hazardous materials that have not been previously abated. The survey addressed only accessible areas of the facility. No destructive testing was performed. An assessment of the following designated substances and hazardous materials was conducted if previously identified:

- Asbestos;
- Lead;
- Mercury;
- Silica;
- Mould;
- Polychlorinated Biphenyls;
- Ozone Depleting and Global Warming Substances

This survey satisfies requirements of Ontario Regulation 278/05 *Designated Substance - Asbestos on Construction Projects and in Buildings and Repair Operations* as made under the Occupational Health and Safety Act.

## 1.1 Scope of Work

In accordance with our fee proposal document, our scope of work included the following activities:

- A review of existing documents, including drawings, floor plans and existing environmental assessment reports, etc., where available;
- A visual assessment of accessible area(s) in the subject building to identify the presence, location, condition and quantities of previously identified designated substances and other hazardous materials;
- Interpretation of bulk sample analysis where applicable (if required) for the determination of content and material classification;
- Preparation of a reassessment survey report to document findings and provide recommendations where applicable.

Documents reviewed to aid in the assessment included the following:

- Annual Survey for Designated Substances and Hazardous Materials, Family Residence Building, 4222 Kingston Road, Toronto, Ontario, by Pinchin Ltd., Project: 103037, Dated December 3, 2015.

## 2.0 METHODOLOGY

The scope of the reassessment was limited to accessible areas identified to contain designated substances and hazardous materials as per the City of Toronto Annual DSS Reassessment Report Database. Documents within the existing database were provided by the City of Toronto - Corporate Real Estate Management Office and utilized for this reassessment.

Destructive testing was not performed during this investigation. Locations of identified designated substances and hazardous materials have been detailed in this report where access was readily available. Inaccessible areas such as above solid drywall/plaster ceilings, within walls, enclosed mechanical shafts, enclosed bulkheads and pipe chases were not investigated. However, details regarding the possible presence of suspect materials were provided on a case-by-case basis.

### Asbestos-Containing Materials

Safetech relied on existing asbestos survey information for review. Building materials that were visually similar to materials previously tested and that were confirmed to be either ACM or non-ACM were considered to have consistent content and were not re-



sampled. Additional sampling was only conducted where the investigator believed a need existed. Disturbance of asbestos-containing materials must be conducted in accordance with Ontario Regulation 278/05 *Designated Substance – Asbestos on Construction Projects and in Building and Repair Operations*.

### **Lead-Containing Materials**

Paint samples, if collected, are submitted to an independent laboratory for the determination of lead content. The laboratory is accredited by the U.S. Environmental Protection Agency (EPA) for analysis of lead in paint chips through the American Industrial Hygiene Association (AIHA) Environmental Lead Laboratory Accreditation Program (ELLAP). Analysis conducted following the EPA “Test Methods for Evaluating Solid Waste, Physical/Chemical Methods” (SW-846), Method 7000B “Flame Atomic Absorption Spectrophotometry”. Result of analysis reported by the laboratory as the percentage of lead by weight of the total sample (% by wt.).

The presence of lead in other materials, such as lead sheeting, pigmented mortar, lead piping, lead solder, etc. would be noted where observed but not sampled to verify lead content. Lead can be present in these materials to varying degrees, depending on their age of application and should be considered lead-containing until proven otherwise.

### **Mercury Containing Materials**

The type, quantity and location of mercury-containing equipment and devices in the subject area were determined by visual inspection based on appearance, age and knowledge of historical uses. Sampling for mercury-containing building materials and dismantling of suspect mercury-containing equipment was not performed. Where possible, attempts were made to verify the presence/absence of mercury by gathering additional information such as equipment model number, serial number, etc.

### **Silica Containing Materials**

The presence of crystalline silica in building materials was determined through visual inspection of building materials only, based on knowledge of the historic use of silica-containing materials in certain building materials. Sampling to verify the presence/absence of silica in building materials was not performed.

### **Acrylonitrile**

Acrylonitrile is typically not expected to be encountered in building materials as a significant constituent or in a form that would represent an exposure concern. Acrylonitrile was not included in the assessment unless specific information regarding its use (e.g. in a manufacturing process) was provided to us. No sampling for acrylonitrile was performed.



## **Arsenic**

Arsenic is typically not expected to be encountered in building materials as a significant constituent or in a form that would represent an exposure concern. Arsenic was not included in the assessment unless specific information regarding its use (e.g. in a manufacturing process) was provided to us. No sampling for arsenic was performed.

## **Benzene**

Benzene is typically not expected to be encountered in building materials as a significant constituent or in a form that would represent an exposure concern. Benzene was not included in the assessment unless specific information regarding its use (e.g. in a manufacturing process) was provided to us. No sampling for benzene was performed.

## **Coke Oven Emissions**

Coke Oven Emissions are typically not expected to be encountered in building materials as a significant constituent or in a form that would represent an exposure concern. Coke Oven Emissions were not included in the assessment unless specific information regarding their use (e.g., in a manufacturing process) was provided to us. No sampling for coke oven emissions was performed.

## **Ethylene Oxide**

Ethylene Oxide is typically not expected to be encountered in building materials as a significant constituent or in a form that would represent an exposure concern. Ethylene Oxide was not included in the assessment unless specific information regarding its use (e.g. in a manufacturing process) was provided to us. No sampling for ethylene oxide was performed.

## **Isocyanates**

Isocyanates are typically not expected to be encountered in building materials as a significant constituent or in a form that would represent an exposure concern. Isocyanates were not included in the assessment unless specific information regarding their use (e.g. in a manufacturing process) was provided to us. No sampling for isocyanates were performed.

## **Vinyl Chloride**

Vinyl Chloride is typically not expected to be encountered in building materials as a significant constituent or in a form that would represent an exposure concern. Vinyl Chloride was not included in the assessment unless specific information regarding its use (e.g. in a manufacturing process) was provided to us. No sampling for vinyl chloride was performed.

## **Mould Contaminated Materials**

A visual inspection to determine the possibility of mould growth was conducted in the subject area. The assessment was limited to identifying evidence of mould growth and water damage (staining, material deterioration, efflorescence, etc.) on the surface of

building materials, which may be an indicator of hidden mould growth. No moisture content readings of building materials were taken to determine their current condition. Additionally, destructive testing to confirm the presence/absence of hidden mould growth and material sampling to verify the presence/absence of mould on suspect surfaces was beyond the scope of this assessment.

### **Polychlorinated Biphenyls (PCB's)**

The presence of PCB-containing electrical equipment in the subject area was identified through visual inspection and knowledge of the timeline of historical use. For stand-alone transformers and capacitors, information from the manufacturer nameplate (such as the date of manufacture, dielectric fluid trade name or "Type Number", etc.) was gathered, where possible, to further evaluate if the equipment may contain PCBs. This information was then compared to the information provided in the Environment Canada document entitled "Handbook on PCB's in Electrical Equipment" (Third Edition, April 1988) to aid in identification. Transformers and capacitors confirmed to be manufactured after 1979 were assumed to not contain PCBs. If appropriate information could not be obtained it was assumed that the transformer or capacitor contained PCBs.

### **Ozone Depleting and Global Warming Substances**

The presence of fixed equipment likely to contain ozone-depleting substances (ODS) and/or global-warming substances (GWS) was identified through visual inspection and knowledge of the timeline of historical use. This included equipment such as chillers, air-conditioners, walk-in refrigeration and freezer units and fixed dry-chemical fire extinguishers, where chemicals such as hydrochlorofluorocarbons (HCFCs), hydrofluorocarbons (HFCs) or halons may be present. Where possible, information regarding the type and quantity of refrigerant present was obtained from the manufacturer nameplate.

## **3.0 ASSESSMENT OF DESIGNATED SUBSTANCES**

### **3.1 Asbestos Containing Materials**

#### **3.1.1 *Laboratory Analytical Results***

Results of analysis for the determination of asbestos content are summarized in Table 2. Materials have been classified as "ACM", "Non-ACM", "Suspected ACM" or "Presumed Non-ACM" based on analytical results. Materials classified as Suspected ACM or Presumed Non-ACM may require further analysis (depending on site-specific conditions) to verify whether the material should be classified as ACM or Non-ACM. Please refer to the Limitations section of this report (Section 5.0) for additional details. The Laboratory Certificate of Analysis is attached in Appendix II.

**TABLE 1**  
**Summary of Laboratory Analytical Results**  
**Family Residence Building**

**4222 Kingston Road, Toronto, Ontario**  
**Sample Collection Date: November 20, 2023**

Sample No.	Material Description	Sample Location	Asbestos Content	Material Classification
A	Drywall Joint Compound (Ceiling)	Laundry's Storage Room (1-21)	None Detected	Non-ACM
B			None Detected	
C			None Detected	

**3.1.2 Previous Laboratory Analytical Results**

All previously assumed and/or confirmed asbestos containing materials were observed to be in good condition at the time of this assessment.

The following building materials are **suspected to be asbestos-containing** but were not sampled as sampling would compromise the integrity of the material, lack of accessibility or potential hazards to the surveyor:

- exterior window caulking; and
- roofing materials.

Refer to Appendix I - Hazardous Materials Room by Room Inventory Sheet and Appendix III – Site Drawing for types, locations, estimated quantities, and condition of asbestos-containing materials identified.

No additional samples were collected for analysis during this assessment.

**3.1.3 Recommendations**

Removal or disturbance of identified asbestos-containing materials must be conducted in accordance with O.Reg. 278/05. Asbestos containing materials in Poor condition must be removed and/or repaired immediately following applicable asbestos abatement procedures. Asbestos-containing materials in Good condition can remain in place until major system upgrading, maintenance or demolition which could result in disturbance of this material.

**3.2 Lead Containing Materials**

**3.2.1 Laboratory Analytical Results**

Laboratory analytical results for paints tested to determine lead content are summarized in the following table. The Laboratory Certificate of Analysis is included in II. Refer to Section 3.2.3 of this report for recommended lead abatement procedures (if any) that correspond to the type of proposed construction, renovation, or demolition work.

**TABLE 2**  
**Summary of Laboratory Analytical Results**  
**Family Residence Building**

**4222 Kingston Road, Toronto, Ontario**  
**Sample Collection Date: November 20, 2023**

Sample No.	Location	Surface	Paint Colour	Condition	Lead Conc. (% by wt.)	Material Classification
L-01	CSW Supervisor's Office (1-03)	Drywall Ceiling	White	Poor	<0.0081	NLC

LCP: Lead-Containing Paint (>0.1% Lead Content); LLLP: Low-Level Lead Paint (≤0.1% Lead Content);  
NLC: Non-Lead Containing (<0.0090% Lead Content)

**3.2.2 Previous Laboratory Analytical Results**

Building materials previously identified as suspected lead-containing were observed to be in good condition. No samples were collected for analysis during this assessment.

**Suspect lead-containing materials** which may be present in the subject building include the following:

- paints and surface coatings (not sampled);
- glazing associated with ceramic tiles;
- solder in copper pipe fittings; and
- solder in electrical components.

Refer to Appendix I - Hazardous Materials Room by Room Inventory Sheet for types, locations, estimated quantities, and condition of lead-containing materials previously identified in the subject area.

**3.2.3 Recommendations**

Paints and surface coatings not sampled are assumed to be lead-containing (>0.1% lead content) in the subject area. Any disturbance of the lead-containing paints or surface coatings should be conducted in accordance with the procedures outlined in the Environmental Abatement Council of Canada (EACC) "Lead Guideline" (October 2014) and/or the Ontario Ministry of Labour, Immigration, Training and Skills Development (MLITSD) "Lead on Construction Projects" guideline (April 2011). The extent of procedures required depends on the type of work to be conducted.

It is recommended that any contractor whose work requires lead-containing materials to be disturbed consult the Ontario MLITSD guidelines prior to the start of work to determine the Type of operation(s) and the corresponding control measures (engineering controls,

work/hygiene practices, protective clothing and equipment and worker training) necessary to conduct the work in a manner that will prevent worker overexposure to lead.

### **3.3 Mercury Containing Materials**

#### **3.3.1 Results**

Mercury liquid is suspected to be present in thermometers, barometers and other measuring devices (pressure gauges/sensors, vacuum gauges, manometers, etc.), thermostats and a variety of other electrical switches (temperature sensitive, tilt switches, float switches, etc.) associated with mechanical equipment.

Mercury vapour is suspected to be present in the subject building within fluorescent lamps.

#### **3.3.2 Recommendations**

It is cautioned that thermometers, barometers and other measuring devices (pressure gauges/sensors, vacuum gauges, manometers, etc.), thermostats and a variety of other electrical switches (temperature sensitive, tilt switches, float switches, etc.) may contain mercury that may not be visible without dismantling the equipment. Such devices should be assumed to contain mercury until proven otherwise and similar precautions to those outlined above should be taken if any of these items are to be disturbed or taken out of service in the future.

Fluorescent lamps that require removal should be handled with care and kept intact to avoid potential exposure to mercury vapour present within the lamps. Under Reg. 347, waste mercury produced in amounts less than 5 kilograms (kg) in any month or otherwise accumulated in an amount less than 5 kg are exempt from hazardous waste registration, treatment and disposal requirements and can be disposed of in landfill as regular waste. Larger quantities of waste mercury must be treated and disposed of in accordance with the requirements of Reg. 347. To prevent the release of mercury into the environment, Safetech recommends that all waste lamps be sent to a lamp recycling facility and not disposed of in landfill.

### **3.4 Silica Containing Materials**

#### **3.4.1 Results**

Suspect silica-containing materials were previously identified to be present in the form of: concrete and masonry building materials.

#### **3.4.2 Recommendations**

Suspect silica-containing materials were identified to be present in the subject building. In their current state, building materials containing silica do not represent a risk to building occupants or construction workers. Risks associated with exposure to silica arise during demolition activities that cause silica dust to be created (particularly grinding, drilling or cutting operations and during major demolition), resulting in a crystalline silica inhalation hazard.

If any materials suspected to contain silica are to be removed or otherwise disturbed as a result of renovation/demolition activities it is recommended that procedures be put in place to control the generation of dust (such as routine water misting) and thus reduce the potential for worker exposure. Workers that have the potential to be exposed to airborne silica should also wear appropriate protective clothing and respiratory protection.

Any work involving the disturbance of silica-containing materials should follow the procedures outlined in the Ontario MLITSD “Silica on Construction Projects” guideline (April 2011). The appropriate engineering controls, work practices, hygiene practices, personal protective measures and training necessary to conduct the work in a safe manner are provided in this guideline. The general measures and procedures (or Type of operation) necessary depends on the type of work to be conducted.

### **3.5 Acrylonitrile**

#### **3.5.1 Results**

Building materials which may contain acrylonitrile were not previously identified within the subject building.

#### **3.5.2 Recommendations**

There are no recommendations with regard to acrylonitrile.

### **3.6 Arsenic**

#### **3.6.1 Results**

Building materials which may contain arsenic were not previously identified within the subject building.

#### **3.6.2 Recommendations**

No protective measures or procedures specific to arsenic are considered necessary.

### **3.7 Benzene**

#### **3.7.1 Results**

Building materials which may contain benzene not previously identified within the subject building.

#### **3.7.2 Recommendations**

No protective measures or procedures specific to benzene are considered necessary.

### **3.8 Coke Oven Emissions**

#### **3.8.1 Results**

Building materials which may contain coke oven emissions were not previously identified within the subject building.

#### **3.8.2 Recommendations**

No protective measures or procedures specific to coke oven emissions are considered necessary.

### **3.9 Ethylene Oxide**

#### **3.9.1 Results**

Building materials which may contain ethylene oxide were not previously identified within the subject building.

#### **3.9.2 Recommendations**

No protective measures or procedures specific to ethylene oxide are considered necessary.

### **3.10 Isocyanates**

#### **3.10.1 Results**

Building materials which may contain isocyanates were not previously identified within the subject building.

#### **3.10.2 Recommendations**

No protective measures or procedures specific to isocyanates are considered necessary.

### **3.11 Vinyl Chloride**

#### **3.11.1 Results**

Building materials which may contain vinyl chloride were not previously identified within the subject building.

#### **3.11.2 Recommendations**

No protective measures or procedures specific to vinyl chloride are considered necessary.

### **3.12 Mould Contaminated Materials**

#### **3.12.1 Results**

Significant suspect mould growth and water staining was identified to be present on drywall ceiling (50 SF) within the Laundry's Storage Room (1-21).

Water damage and water staining was identified to be present on the concrete block



wall within the Boiler Room B-06, Exit Door B-05, and Hallway B-01 of the subject building. At the time of our inspection, no mould growth was identified on the surface of the ceiling.

### **3.12.2 Recommendations**

Remove mould-contaminated and water-damaged drywall ceiling within the Laundry's Storage Room (1-21) following Level 2 mould remediation procedures as outlined in EACC "Mould Abatement Guidelines".

At this time, no mould specifications are required for the repair of concrete block wall within the Boiler Room B-06, Exit Door B-05, and Hallway B-01 of the subject building.

## **3.13 Polychlorinated Biphenyls (PCBs)**

### **3.13.1 Results**

No sources of polychlorinated biphenyls (PCBs) were observed in the subject building.

### **3.13.2 Recommendations**

No protective measures or procedures specific to polychlorinated biphenyls (PCBs) are considered necessary.

## **3.14 Ozone Depleting and Global Warming Substances**

### **3.14.1 Results**

No fixed equipment suspected to contain ODS/GWS was observed in the subject building.

### **3.14.2 Recommendations**

No protective measures or procedures specific to ozone depleting and global warming substances are considered necessary.

## **4.0 CORRECTIVE ACTIONS**

Safetech Environmental Limited communicated the reported deficiencies and recommendations for corrective actions to the City of Toronto. Please refer to Appendix V for corrective actions form.

## **5.0 LIMITATIONS**

The information and recommendations detailed in this report were carried out by trained professional and technical staff in accordance with generally accepted environmental and industrial hygiene work practices and procedures. Recommendations provided in this report have been generated in accordance with accepted industry guidelines and practices. These guidelines and practices are considered acceptable as of the date of this report.

In preparation of this report, Safetech Environmental Limited (Safetech) relied on information including testing services provided by independent laboratories. Except as expressly set out in this report, Safetech has not made any independent verification of this information provided by independent entities.

Conclusions are based on site conditions at the time of inspection and can only be extrapolated to an undefined limited area around inspected locations. The extent of the limited area depends on building construction and conditions. Safetech cannot warrant against undiscovered environmental liabilities. If any information becomes available that differs from the findings in this report, we request that we be notified immediately to reassess the conclusions provided herein.

This report has been prepared for the sole use of the person or entity to who it is addressed. No other person or entity is entitled to use or rely upon this report without the express written consent of Safetech Environmental Limited and the person or entity to who it is addressed. Any use that a third party makes of this report, or any reliance based on conclusions and recommendations made, are the responsibility of such third parties. Safetech accepts no responsibility for damages suffered by third parties as a result of actions based on this report.

**Appendix I - Hazardous Materials Room by Room Inventory Sheet**

---

APPENDIX I REASSESSMENT SURVEY FORM

Building Address: 4222 Kingston Road, Toronto, ON. Date(s) of Current Survey: November 20, 2023  
 Building Name: Family Residence Organization Completing Survey: Safetech Environmental Limited

**Summary Findings:** All previously identified or suspect asbestos containing materials were observed to be in GOOD condition.

Location Number	Location Name	Building System	Material Observed	Potential Hazardous Material	Sample ID	Analytical Result	Quantity	Condition	Notes / Recommended Actions
0-00	Exterior	Wall	N/A	N/A	N/A	N/A	N/A	N/A	
0-00	Exterior	Roof	Roofing Material	Asbestos	ACM Assumed	ACM Assumed	N/A	N/A	
0-00	Exterior	Windows	Window Caulking	Asbestos	ACM Assumed	ACM Assumed	N/A	N/A	
B-01	Hallway	Floor	Vinyl Floor Tiles (VFT01)	Asbestos	2014 A-010 a-c	None Detected	N/A	N/A	VFT01 - 12" x 12" beige with brown fleck 2014 Pinchin DSS Reassessment
B-01	Hallway	Wall	Concrete	N/A	N/A	N/A	N/A	N/A	
B-01	Hallway	Wall	Concrete	Water-Damage	N/A	N/A	~40 SF	N/A	Potential Structural Repair
B-01	Hallway	Wall	Drywall Joint Compound	Asbestos	2014 A-002 A-F	None Detected	N/A	N/A	
B-01	Hallway	Ceiling	Concrete	N/A	N/A	N/A	N/A	N/A	*No Access Above Ceiling
B-02	Storage Room	Floor	Concrete	N/A	N/A	N/A	N/A	N/A	
B-02	Storage Room	Wall	Concrete	N/A	N/A	N/A	N/A	N/A	
B-02	Storage Room	Wall	Drywall Joint Compound	Asbestos	2014 A-002 A-F	None Detected	N/A	N/A	One Wall has No Joint Compound
B-02	Storage Room	Ceiling	Concrete	N/A	N/A	N/A	N/A	N/A	*No Access Above Ceiling
B-03	Lunch Room	Floor	Vinyl Floor Tiles (VFT01)	Asbestos	2014 A-010 a-c	None Detected	N/A	N/A	VFT01 - 12" x 12" beige with brown fleck 2014 Pinchin DSS Reassessment
B-03	Lunch Room	Wall	Drywall Joint Compound	Asbestos	2014 A-002 a-f	None Detected	N/A	N/A	2014 Pinchin DSS Reassessment
B-03	Lunch Room	Ceiling	Texture Finish	Asbestos	2010-13085-A-09-02	None Detected	N/A	N/A	From ECOH 2010 Reassessment Report
B-04	Kitchen	Floor	Ceramic	N/A	N/A	N/A	N/A	N/A	
B-04	Kitchen	Wall	Drywall Joint Compound	Asbestos	2014 A-002 a-f	None Detected	N/A	N/A	2014 Pinchin DSS Reassessment
B-04	Kitchen	Ceiling	Drywall Joint Compound	Asbestos	2014 A-002 a-f	None Detected	N/A	N/A	2014 Pinchin DSS Reassessment *No Access Above Ceiling
B-04	Kitchen	Duct	Uninsulated	N/A	N/A	N/A	N/A	N/A	
B-05	Electrical Room	Floor	Concrete	N/A	N/A	N/A	N/A	N/A	
B-05	Electrical Room	Wall	Concrete	N/A	N/A	N/A	N/A	N/A	
B-05	Electrical Room	Wall	Concrete	Water-Damage	N/A	N/A	40 SF	Poor	Potential Structural Repair
B-05	Electrical Room	Ceiling	Concrete	N/A	N/A	N/A	N/A	N/A	*No Access Above Ceiling
B-05	Electrical Room	Pipe	Uninsulated	N/A	N/A	N/A	N/A	N/A	
B-05	Electrical Room	Pipe	Fibreglass	N/A	N/A	N/A	N/A	N/A	
B-05	Electrical Room	Other	Transformer	PCBs	N/A	Wet-type	1EA	N/A	Wet-type Transformer (PCBs) present
B-06	Boiler Room	Floor	Concrete	N/A	N/A	N/A	N/A	N/A	
B-06	Boiler Room	Wall	Concrete	N/A	N/A	N/A	N/A	N/A	
B-06	Boiler Room	Wall	Concrete	Water-Damage	N/A	N/A	40 SF	Poor	Potential Structural Repair

APPENDIX I REASSESSMENT SURVEY FORM

Building Address	4222 Kingston Road, Toronto, ON.	Date(s) of Current Survey:	November 20, 2023
Building Name	Family Residence	Organization Completing Survey:	Safetech Environmental Limited

**Summary Findings:** All previously identified or suspect asbestos containing materials were observed to be in GOOD condition.

Location Number	Location Name	Building System	Material Observed	Potential Hazardous Material	Sample ID	Analytical Result	Quantity	Condition	Notes / Recommended Actions
B-06	Boiler Room	Ceiling	Concrete	N/A	N/A	N/A	N/A	N/A	*No Access Above Ceiling
B-06	Boiler Room	Pipe	Uninsulated	N/A	N/A	N/A	N/A	N/A	
B-06	Boiler Room	Pipe	Fibreglass	N/A	N/A	N/A	N/A	N/A	
B-06	Boiler Room	Duct	Uninsulated	N/A	N/A	N/A	N/A	N/A	
B-06	Boiler Room	Mechanica	Uninsulated	N/A	N/A	N/A	N/A	N/A	Hot Water Tanks (2)
B-06	Boiler Room	Mechanica	Uninsulated	N/A	N/A	N/A	N/A	N/A	Boiler (2)
B-07	Washroom	Floor	Ceramic	N/A	N/A	N/A	N/A	N/A	
B-07	Washroom	Wall	Drywall Joint Compound	Asbestos	2014 A-002 a-f	None Detected	N/A	N/A	2014 Pinchin DSS Reassessment
B-07	Washroom	Wall	Ceramic	N/A	N/A	N/A	N/A	N/A	
B-07	Washroom	Ceiling	Drywall Joint Compound	Asbestos	2014 A-002 a-f	None Detected	N/A	N/A	2014 Pinchin DSS Reassessment
B-07	Washroom	Pipe	Uninsulated	N/A	N/A	N/A	N/A	N/A	

APPENDIX I REASSESSMENT SURVEY FORM

Building Address		4222 Kingston Road, Toronto, ON.			Date(s) of Current Survey:		November 20, 2023		
Building Name		Family Residence			Organization Completing Survey:		Safetech Environmental Limited		
<b>Summary Findings: All previously identified or suspect asbestos containing materials were observed to be in GOOD condition.</b>									
Location Number	Location Name	Building System	Material Observed	Potential Hazardous Material	Sample ID	Analytical Result	Quantity	Condition	Notes / Recommended Actions
B-08	Storage Room	Floor	Concrete	N/A	N/A	N/A	N/A	N/A	
B-08	Storage Room	Wall	Concrete	N/A	N/A	N/A	N/A	N/A	
B-08	Storage Room	Ceiling	Concrete	N/A	N/A	N/A	N/A	N/A	*No Access Above Ceiling
B-08	Storage Room	Pipe	Uninsulated	N/A	N/A	N/A	N/A	N/A	
B-08	Storage Room	Pipe	Fibreglass	N/A	N/A	N/A	N/A	N/A	
B-08	Storage Room	Duct	Uninsulated	N/A	N/A	N/A	N/A	N/A	
B-09	Storage Room	Floor	Concrete	N/A	N/A	N/A	N/A	N/A	
B-09	Storage Room	Wall	Concrete	N/A	N/A	N/A	N/A	N/A	
B-09	Storage Room	Ceiling	Concrete	N/A	N/A	N/A	N/A	N/A	*No Access Above Ceiling
B-09	Storage Room	Pipe	Uninsulated	N/A	N/A	N/A	N/A	N/A	
B-09	Storage Room	Pipe	Fibreglass	N/A	N/A	N/A	N/A	N/A	
B-10	Corridor	Floor	Concrete	N/A	N/A	N/A	N/A	N/A	
B-10	Corridor	Wall	Concrete	N/A	N/A	N/A	N/A	N/A	
B-10	Corridor	Ceiling	Concrete	N/A	N/A	N/A	N/A	N/A	*No Access Above Ceiling
B-10	Corridor	Pipe	Uninsulated	N/A	N/A	N/A	N/A	N/A	
B-10	Corridor	Pipe	Fibreglass	N/A	N/A	N/A	N/A	N/A	
B-11	Electrical Room	Floor	Concrete	N/A	N/A	N/A	N/A	N/A	
B-11	Electrical Room	Wall	Concrete	N/A	N/A	N/A	N/A	N/A	
B-11	Electrical Room	Ceiling	Concrete	N/A	N/A	N/A	N/A	N/A	*No Access Above Ceiling
B-11	Electrical Room	Pipe	Uninsulated	N/A	N/A	N/A	N/A	N/A	
B-11	Electrical Room	Pipe	Fibreglass	N/A	N/A	N/A	N/A	N/A	
1-01 to 1-03	Offices	Floor	Vinyl Sheet Flooring (VSF1)	Asbestos	2010- 13085-A-09-04	None Detected	N/A	N/A	VSF 1, pink, gunmetal grey, cream From ECOH 2010 Reassessment Report
1-01 to 1-03	Offices	Wall	Drywall Joint Compound	Asbestos	2014 A-002 a-f	None Detected	N/A	N/A	2014 Pinchin DSS Reassessment
1-01 to 1-03	Offices	Ceiling	Drywall Joint Compound	Asbestos	2014 A-002 a-f	None Detected	N/A	N/A	2014 Pinchin DSS Reassessment
1-05	Washroom	Floor	Ceramic	N/A	N/A	N/A	N/A	N/A	
1-05	Washroom	Wall	Concrete	N/A	N/A	N/A	N/A	N/A	
1-05	Washroom	Ceiling	Drywall Joint Compound	Asbestos	2014 A-002 a-f	None Detected	N/A	N/A	2014 Pinchin DSS Reassessment
1-06	Photocopy Room	Floor	Vinyl Sheet Flooring (VSF1)	Asbestos	2010- 13085-A-09-04	None Detected	N/A	N/A	VSF 1, pink, gunmetal grey, cream From ECOH 2010 Reassessment Report
1-06	Photocopy Room	Wall	Drywall Joint Compound	Asbestos	2014 A-002 a-f	None Detected	N/A	N/A	2014 Pinchin DSS Reassessment

APPENDIX I REASSESSMENT SURVEY FORM

Building Address	4222 Kingston Road, Toronto, ON.	Date(s) of Current Survey:	November 20, 2023
Building Name	Family Residence	Organization Completing Survey:	Safetech Environmental Limited

**Summary Findings:** All previously identified or suspect asbestos containing materials were observed to be in GOOD condition.

Location Number	Location Name	Building System	Material Observed	Potential Hazardous Material	Sample ID	Analytical Result	Quantity	Condition	Notes / Recommended Actions
1-06	Photocopy Room	Ceiling	Concrete	N/A	N/A	N/A	N/A	N/A	*No Access Above Ceiling
1-06	Photocopy Room	Pipe	Uninsulated	N/A	N/A	N/A	N/A	N/A	
1-06	Photocopy Room	Pipe	Fibreglass	N/A	N/A	N/A	N/A	N/A	
1-06	Photocopy Room	Duct	Uninsulated	N/A	N/A	N/A	N/A	N/A	
1-07	Storage Room	Floor	Viny Sheet Flooring (VSF2 )	Asbestos	201 A-006 A-C	None Detected	N/A	N/A	VSF02 - blue wave
1-07	Storage Room	Floor	Ceramic	N/A	N/A	N/A	N/A	N/A	
1-07	Storage Room	Wall	Drywall Joint Compound	Asbestos	2014 A-002 a-f	None Detected	N/A	N/A	2014 Pinchin DSS Reassessment
1-07	Storage Room	Wall	Ceramic	N/A	N/A	N/A	N/A	N/A	
1-07	Storage Room	Ceiling	Texture Finish	Asbestos	2010-13085-A-09-02	None Detected	N/A	N/A	*No Access Above Ceiling
1-07	Storage Room	Pipe	Uninsulated	N/A	N/A	N/A	N/A	N/A	
1-07	Storage Room	Duct	Uninsulated	N/A	N/A	N/A	N/A	N/A	
1-08	Stairwell Area	Floor	Vinyl Sheet Flooring (VSF2)	Asbestos	2014-A 006-A	None Detected	N/A	N/A	VSF 2, blue wave 2014 Pinchin DSS Reassessment
1-08	Stairwell Area	Wall	Drywall Joint Compound	Asbestos	2014 A-002 a-f	None Detected	N/A	N/A	2014 Pinchin DSS Reassessment
1-08	Stairwell Area	Ceiling	Texture Finish	Asbestos	2010-13085-A-09-02	None Detected	N/A	N/A	From ECOH 2010 Reassessment Report
1-09	Hallway	Floor	Vinyl Sheet Flooring (VSF1)	Asbestos	2010- 13085-A-09-04	None Detected	N/A	N/A	VSF1, pink, gunmetal grey, cream From ECOH 2010 Reassessment Report
1-09	Hallway	Wall	Drywall Joint Compound	Asbestos	2014 A-002 a-f	None Detected	N/A	N/A	2014 Pinchin DSS Reassessment
1-09	Hallway	Ceiling	Drywall Joint Compound	Asbestos	2014 A-002 a-f	None Detected	N/A	N/A	2014 Pinchin DSS Reassessment *No Access Above Ceiling



APPENDIX I REASSESSMENT SURVEY FORM

Building Address		4222 Kingston Road, Toronto, ON.			Date(s) of Current Survey:		November 20, 2023		
Building Name		Family Residence			Organization Completing Survey:		Safetech Environmental Limited		
<b>Summary Findings: All previously identified or suspect asbestos containing materials were observed to be in GOOD condition.</b>									
Location Number	Location Name	Building System	Material Observed	Potential Hazardous Material	Sample ID	Analytical Result	Quantity	Condition	Notes / Recommended Actions
1-10	Office	Floor	Vinyl Sheet Flooring (VSF1)	Asbestos	2010- 13085-A-09-04	None Detected	N/A	N/A	VSF1, pink, gunmetal grey, cream From ECOH 2010 Reassessment Report
1-10	Office	Wall	Drywall Joint Compound	Asbestos	2014 A-002 a-f	None Detected	N/A	N/A	2014 Pinchin DSS Reassessment
1-10	Office	Ceiling	Drywall Joint Compound	Asbestos	2014 A-002 a-f	None Detected	N/A	N/A	From ECOH 2010 Reassessment Report *No Access Above Ceiling
1-11	Office	Floor	Vinyl Sheet Flooring (VSF1)	Asbestos	2010- 13085-A-09-04	None Detected	N/A	N/A	VSF1, pink, gunmetal grey, cream From ECOH 2010 Reassessment Report
1-11	Office	Wall	Drywall Joint Compound	Asbestos	2014 A-002 a-f	None Detected	N/A	N/A	2014 Pinchin DSS Reassessment
1-11	Office	Ceiling	Texture Finish	Asbestos	2010-13085-A-09-02	None Detected	N/A	N/A	From ECOH 2010 Reassessment Report *No Access Above Ceiling
1-12	Main Corridor	Floor	Vinyl Sheet Flooring (VSF2)	Asbestos	2014-A 006-A	None Detected	N/A	N/A	VSF2, Blue Wave 2014 Pinchin DSS Reassessment
1-12	Main Corridor	Wall	Concrete Block	N/A	N/A	N/A	N/A	N/A	
1-12	Main Corridor	Wall	Drywall Joint Compound	Asbestos	2014 A-002 a-f	None Detected	N/A	N/A	2014 Pinchin DSS Reassessment
1-12	Main Corridor	Ceiling	Drywall Joint Compound	Asbestos	2014 A-002 a-f	None Detected	N/A	N/A	2014 Pinchin DSS Reassessment
1-12	Main Corridor	Ceiling	Texture Finish	Asbestos	N/A7-140706267-0004	None Detected	N/A	N/A	From Fisher N/A7 DSS Report *No Access Above Ceiling
1-13	Lobby & Main Office	Floor	Vinyl Sheet Flooring (VSF1)	Asbestos	2010- 13085-A-09-04	None Detected	N/A	N/A	VSF1, pink, gunmetal grey, cream From ECOH 2010 Reassessment Report
1-13	Lobby & Main Office	Floor	Ceramic	N/A	N/A	N/A	N/A	N/A	
1-13	Lobby & Main Office	Wall	Drywall Joint Compound	Asbestos	2014 A-002 a-f	None Detected	N/A	N/A	2014 Pinchin DSS Reassessment
1-13	Lobby & Main Office	Ceiling	Acoustic Ceiling Tiles (ACT01)	Asbestos	2014 A003A-C	None Detected	N/A	N/A	ACT 01- 2'x2' small fissures and pin hole- same throughout building. 2014 Pinchin DSS
1-13	Lobby & Main Office	Ceiling	Texture Finish	Asbestos	2010-13085-A-09-02	None Detected	N/A	N/A	From ECOH 2010 Reassessment Report
1-13	Lobby & Main Office	Duct	Uninsulated	N/A	N/A	N/A	N/A	N/A	
1-13	Lobby & Main Office	Duct	Fibreglass	N/A	N/A	N/A	N/A	N/A	
1-14	Office	Floor	Vinyl Sheet Flooring (VSF1)	Asbestos	2010- 13085-A-09-04	None Detected	N/A	N/A	VSF1, pink, gunmetal grey, cream From ECOH 2010 Reassessment Report
1-14	Office	Wall	Drywall Joint Compound	Asbestos	2014 A-002 a-f	None Detected	N/A	N/A	2014 Pinchin DSS Reassessment
1-14	Office	Ceiling	Texture Finish	Asbestos	2010-13085-A-09-02	None Detected	N/A	N/A	From ECOH 2010 Reassessment Report
1-15a to 1-15g	Offices	Floor	Vinyl Sheet Flooring (VSF1)	Asbestos	2010- 13085-A-09-04	None Detected	N/A	N/A	VSF1, pink, gunmetal grey, cream From Fisher N/A8 Reassessment Report
1-15a to 1-15g	Offices	Wall	Drywall Joint Compound	Asbestos	2014 A-002 a-f	None Detected	N/A	N/A	2014 Pinchin DSS Reassessment
1-15a to 1-15g	Offices	Ceiling	Acoustic Ceiling Tiles (ACT01)	Asbestos	2014 A003A-C	None Detected	N/A	N/A	ACT 01- 2'x2' small fissures and pin hole- same throughout building. 2014 Pinchin DSS
1-15a to 1-15g	Offices	Pipe	Uninsulated	N/A	N/A	N/A	N/A	N/A	
1-15a to 1-15g	Offices	Duct	Uninsulated	N/A	N/A	N/A	N/A	N/A	
1-16	Meeting Room & Washroom	Floor	Vinyl Floor Tiles (VFT02)	Asbestos	2014 A-001 a-c	None Detected	N/A	N/A	VFT02 - 12" x 12" cream with blue fleck. 2014 Pinchin DSS Reassessment
1-16	Meeting Room & Washroom	Floor	Ceramic	N/A	N/A	N/A	N/A	N/A	
1-16	Meeting Room & Washroom	Wall	Drywall Joint Compound	Asbestos	2014 A-002 a-f	None Detected	N/A	N/A	2014 Pinchin DSS Reassessment

APPENDIX I REASSESSMENT SURVEY FORM

Building Address		4222 Kingston Road, Toronto, ON.			Date(s) of Current Survey:		November 20, 2023		
Building Name		Family Residence			Organization Completing Survey:		Safetech Environmental Limited		
<b>Summary Findings:</b> All previously identified or suspect asbestos containing materials were observed to be in GOOD condition.									
Location Number	Location Name	Building System	Material Observed	Potential Hazardous Material	Sample ID	Analytical Result	Quantity	Condition	Notes / Recommended Actions
1-16	Meeting Room & Washroom	Ceiling	Texture Finish	Asbestos	2010-13085-A-09-02	None Detected	N/A	N/A	From ECOH 2010 Reassessment Report
1-16	Meeting Room & Washroom	Ceiling	Acoustic Ceiling Tiles (ACT01)	Asbestos	2014 A003A-C	None Detected	N/A	N/A	ACT 01- 2'x2' small fissures and pin hole-same throughout building. 2014 Pinchin DSS
1-16	Meeting Room & Washroom	Ceiling	Drywall Joint Compound	Asbestos	2014 A-002 a-f	None Detected	N/A	N/A	2014 Pinchin DSS Reassessment
1-16	Meeting Room & Washroom	Pipe	Uninsulated	N/A	N/A	N/A	N/A	N/A	
1-16	Meeting Room & Washroom	Duct	Uninsulated	N/A	N/A	N/A	N/A	N/A	
1-17	Hallway	Floor	Vinyl Sheet Flooring (VSF1)	Asbestos	2010- 13085-A-09-04	None Detected	N/A	N/A	VSF1, pink, gunmetal grey, cream From ECOH 2010 Reassessment Report
1-17	Hallway	Wall	Drywall Joint Compound	Asbestos	2014 A-002 a-f	None Detected	N/A	N/A	2014 Pinchin DSS Reassessment
1-17	Hallway	Ceiling	Acoustic Ceiling Tiles (ACT01)	Asbestos	2014 A003A-C	None Detected	N/A	N/A	ACT 01- 2'x2' small fissures and pin hole-same throughout building. 2014 Pinchin DSS
1-17	Hallway	Duct	Uninsulated	N/A	N/A	N/A	N/A	N/A	

APPENDIX I REASSESSMENT SURVEY FORM

Building Address		4222 Kingston Road, Toronto, ON.			Date(s) of Current Survey:		November 20, 2023		
Building Name		Family Residence			Organization Completing Survey:		Safetech Environmental Limited		
<b>Summary Findings: All previously identified or suspect asbestos containing materials were observed to be in GOOD condition.</b>									
Location Number	Location Name	Building System	Material Observed	Potential Hazardous Material	Sample ID	Analytical Result	Quantity	Condition	Notes / Recommended Actions
1-18	Meeting Room	Floor	Vinyl Sheet Flooring (VSF1)	Asbestos	2010-13085-A-09-04	None Detected	N/A	N/A	VSF1, pink, gunmetal grey, cream From ECOH 2010 Reassessment Report
1-18	Meeting Room	Wall	Drywall Joint Compound	Asbestos	2014 A-002 a-f	None Detected	N/A	N/A	2014 Pinchin DSS Reassessment
1-18	Meeting Room	Ceiling	Acoustic Ceiling Tiles (ACT01)	Asbestos	2014 A003A-C	None Detected	N/A	N/A	ACT 01- 2'x2' small fissures and pin hole- same throughout building. 2014 Pinchin DSS
1-19	Exterior Walkway	Floor	N/A	N/A	N/A	None Detected	N/A	N/A	
1-19	Exterior Walkway	Wall	N/A	N/A	N/A	None Detected	N/A	N/A	
1-19	Exterior Walkway	Ceiling	Texture Finish	Asbestos	2010-13085-A-09-02	None Detected	N/A	N/A	From ECOH 2010 Reassessment Report
1-20a-b	Computer Room	Floor	Vinyl Floor Tiles (VFT02)	Asbestos	2014 A-001 a-c	None Detected	N/A	N/A	VFT02 - 12" x 12" cream with blue fleck. 2014 Pinchin DSS Reassessment
1-20a-b	Computer Room	Wall	Drywall Joint Compound	Asbestos	2014 A-002 a-f	None Detected	N/A	N/A	2014 Pinchin DSS Reassessment
1-20a-b	Computer Room	Ceiling	Acoustic Ceiling Tiles (ACT01)	Asbestos	2014 A003A-C	None Detected	N/A	N/A	ACT 01- 2'x2' small fissures and pin hole- same throughout building. 2014 Pinchin DSS
1-20a-b	Computer Room	Ceiling	Texture Finish	Asbestos	2010-13085-A-09-02	None Detected	N/A	N/A	From ECOH 2010 Reassessment Report
1-20a-b	Computer Room	Ceiling	Drywall Joint Compound	Asbestos	2014 A-002 a-f	None Detected	N/A	N/A	2014 Pinchin DSS Reassessment *No Access Above Ceiling
1-20a-b	Computer Room	Pipe	Uninsulated	N/A	N/A	N/A	N/A	N/A	
1-20a-b	Computer Room	Duct	Uninsulated	N/A	N/A	N/A	N/A	N/A	
1-20c	Kitchen & Janitor's Closet	Floor	Vinyl Floor Tiles (VFT03)	Asbestos	2015-A0011A-C	None Detected	N/A	N/A	VFT03 - 12" x 12" black and white flecks
1-20c	Kitchen & Janitor's Closet	Floor	Vinyl Floor Tiles (VFT04)		2015-A0012A-C	None Detected	N/A	N/A	VFT04 - 12"x12" white with black flecks
1-20c	Kitchen & Janitor's Closet	Floor	Ceramic	N/A	N/A	N/A	N/A	N/A	
1-20c	Kitchen & Janitor's Closet	Wall	Drywall Joint Compound	Asbestos	2014 A-002 a-f	None Detected	N/A	N/A	2014 Pinchin DSS Reassessment
1-20c	Kitchen & Janitor's Closet	Wall	Ceramic	N/A	N/A	N/A	N/A	N/A	
1-20c	Kitchen & Janitor's Closet	Ceiling	Acoustic Ceiling Tiles (ACT01)	Asbestos	2014 A003A-C	None Detected	N/A	N/A	ACT 01- 2'x2' small fissures and pin hole- same throughout building. 2014 Pinchin DSS
1-20c	Kitchen & Janitor's Closet	Ceiling	Texture Finish	Asbestos	2010-13085-A-09-02	None Detected	N/A	N/A	From ECOH 2010 Reassessment Report
1-20c	Kitchen & Janitor's Closet	Ceiling	Drywall Joint Compound	Asbestos	2014 A-002 a-f	None Detected	N/A	N/A	2014 Pinchin DSS Reassessment
1-20c	Kitchen & Janitor's Closet	Ceiling	Paint	Lead	L0001	0.01%	3 SF	N/A	
1-20d	Suite 111	Floor	Vinyl Floor Tiles (VFT02)	Asbestos	2014 A-001 a-c	None Detected	N/A	N/A	VFT02 - 12" x 12" cream with blue fleck. 2014 Pinchin DSS Reassessment
1-20d	Suite 111	Floor	Ceramic	N/A	N/A	N/A	N/A	N/A	
1-20d	Suite 111	Wall	Drywall Joint Compound	N/A	2014 A-002 a-f	None Detected	N/A	N/A	From ECOH 2010 Reassessment Report. 2014 Pinchin DSS Reassessment
1-20d	Suite 111	Wall	Ceramic	N/A	N/A	N/A	N/A	N/A	
1-20d	Suite 111	Ceiling	Acoustic Ceiling Tiles (ACT01)	Asbestos	2014 A003A-C	None Detected	N/A	N/A	ACT 01- 2'x2' small fissures and pin hole- same throughout building. 2014 Pinchin DSS
1-20d	Suite 111	Ceiling	Texture Finish	Asbestos	2010-13085-A-09-02	None Detected	N/A	N/A	From ECOH 2010 Reassessment Report
1-20d	Suite 111	Ceiling	Drywall Joint Compound	Asbestos	2014 A-002 a-f	None Detected	N/A	N/A	From ECOH 2010 Reassessment Report. 2014 Pinchin DSS Reassessment

APPENDIX I REASSESSMENT SURVEY FORM

Building Address		4222 Kingston Road, Toronto, ON.			Date(s) of Current Survey:		November 20, 2023		
Building Name		Family Residence			Organization Completing Survey:		Safetech Environmental Limited		
<b>Summary Findings: All previously identified or suspect asbestos containing materials were observed to be in GOOD condition.</b>									
Location Number	Location Name	Building System	Material Observed	Potential Hazardous Material	Sample ID	Analytical Result	Quantity	Condition	Notes / Recommended Actions
1-20d	Suite 111	Pipe	Uninsulated	N/A	N/A	N/A	N/A	N/A	
1-20d	Suite 111	Duct	Uninsulated	N/A	N/A	N/A	N/A	N/A	
1-20e	Suite 112	Floor	Vinyl Floor Tiles (VFT02)	Asbestos	2014 A-001 a-c	None Detected	N/A	N/A	VFT02 - 12" x 12" cream with blue fleck 2014 Pinchin DSS Reassessment
1-20e	Suite 112	Floor	Ceramic	N/A	N/A	N/A	N/A	N/A	
1-20e	Suite 112	Wall	Drywall Joint Compound	N/A	2014 A-002 a-f	None Detected	N/A	N/A	From Fisher N/A8 Reassessment Report. 2014 Pinchin DSS Reassessment
1-20e	Suite 112	Wall	Ceramic	N/A	N/A	N/A	N/A	N/A	
1-20e	Suite 112	Ceiling	Acoustic Ceiling Tiles (ACT01)	Asbestos	2014 A003A-C	None Detected	N/A	N/A	ACT 01- 2'x2' small fissures and pin hole- same throughout building. 2014 Pinchin DSS
1-20e	Suite 112	Ceiling	Texture Finish	Asbestos		None Detected	N/A	N/A	From Fisher N/A8 Reassessment Report
1-20e	Suite 112	Ceiling	Drywall Joint Compound	Asbestos	2014 A-002 a-f	None Detected	N/A	N/A	From Fisher N/A8 Reassessment Report. 2014 Pinchin DSS Reassessment
1-20e	Suite 112	Door	Paint	Lead	L0002	0.02%	12 SF	N/A	
1-20e	Suite 112	Pipe	Uninsulated	N/A	N/A	N/A	N/A	N/A	
1-20e	Suite 112	Duct	Uninsulated	N/A	N/A	N/A	N/A	N/A	
1-20f	Suite 114	Floor	Vinyl Floor Tiles (VFT02)	Asbestos	2014 A001A-C	None Detected	N/A	N/A	VFT02 - 12" x 12" cream with blue fleck. 2014 Pinchin DSS Reassessment
1-20f	Suite 114	Floor	Ceramic	N/A	N/A	N/A	N/A	N/A	
1-20f	Suite 114	Wall	Drywall Joint Compound	Asbestos	2014 A-002 a-f	None Detected	N/A	N/A	2014 Pinchin DSS Reassessment
1-20f	Suite 114	Wall	Ceramic	N/A	N/A	N/A	N/A	N/A	
1-20f	Suite 114	Ceiling	Acoustic Ceiling Tiles (ACT01)	Asbestos	2014 A003A-C	None Detected	N/A	N/A	ACT 01- 2'x2' small fissures and pin hole- same throughout building. 2014 Pinchin DSS
1-20f	Suite 114	Ceiling	Texture Finish	Asbestos	2010-13085-A-09-02	None Detected	N/A	N/A	From ECOH 2010 Reassessment Report
1-20f	Suite 114	Ceiling	Drywall Joint Compound	Asbestos	2014 A-002 a-f	None Detected	N/A	N/A	2014 Pinchin DSS Reassessment
1-20f	Suite 114	Pipe	Uninsulated	N/A	N/A	N/A	N/A	N/A	
1-20f	Suite 114	Duct	Uninsulated	N/A	N/A	N/A	N/A	N/A	
1-20g	Resident Suite (Room 115)	Floor	Vinyl Floor Tiles (VFT02)	Asbestos	2014 A-001 a-c	None Detected	N/A	N/A	VFT02 - 12" x 12" cream with blue fleck. 2014 Pinchin DSS Reassessment
1-20g	Resident Suite (Room 115)	Floor	Ceramic	N/A	N/A	N/A	N/A	N/A	
1-20g	Resident Suite (Room 115)	Wall	Drywall Joint Compound	Asbestos	2014 A-002 a-f	None Detected	N/A	N/A	2014 Pinchin DSS Reassessment
1-20g	Resident Suite (Room 115)	Floor	Ceramic	N/A	N/A	N/A	N/A	N/A	
1-20g	Resident Suite (Room 115)	Ceiling	Acoustic Ceiling Tiles (ACT01)	Asbestos	2014 A003A-C	None Detected	N/A	N/A	ACT 01- 2'x2' small fissures and pin hole- same throughout building. 2014 Pinchin DSS
1-20g	Resident Suite (Room 115)	Ceiling	Texture Finish	Asbestos	2010-13085-A-09-02	None Detected	N/A	N/A	From ECOH 2010 Reassessment Report
1-20g	Resident Suite (Room 115)	Ceiling	Drywall Joint Compound	Asbestos	2014 A-002 a-f	None Detected	N/A	N/A	2014 Pinchin DSS Reassessment
1-20g	Resident Suite (Room 115)	Pipe	Uninsulated	N/A	N/A	N/A	N/A	N/A	

APPENDIX I REASSESSMENT SURVEY FORM

Building Address		4222 Kingston Road, Toronto, ON.			Date(s) of Current Survey:		November 20, 2023		
Building Name		Family Residence			Organization Completing Survey:		Safetech Environmental Limited		
<b>Summary Findings: All previously identified or suspect asbestos containing materials were observed to be in GOOD condition.</b>									
Location Number	Location Name	Building System	Material Observed	Potential Hazardous Material	Sample ID	Analytical Result	Quantity	Condition	Notes / Recommended Actions
1-20g	Resident Suite (Room 115)	Duct	Uninsulated	N/A	N/A	N/A	N/A	N/A	
1-20h	Resident Suite (Room 116)	Floor	Vinyl Floor Tiles (VFT02)	Asbestos	2014 A-001 a-c	None Detected	N/A	N/A	VFT02 - 12" x 12" cream with blue fleck. 2014 Pinchin DSS Reassessment
1-20h	Resident Suite (Room 116)	Floor	Ceramic	N/A	N/A	N/A	N/A	N/A	
1-20h	Resident Suite (Room 116)	Wall	Drywall Joint Compound	Asbestos	2014 A-002 a-f	None Detected	N/A	N/A	2014 Pinchin DSS Reassessment
1-20h	Resident Suite (Room 116)	Wall	Ceramic	N/A	N/A	N/A	N/A	N/A	
1-20h	Resident Suite (Room 116)	Ceiling	Acoustic Ceiling Tiles (ACT01)	Asbestos	2014 A003A-C	None Detected	N/A	N/A	ACT 01- 2'x2' small fissures and pin hole-same throughout building. 2014 Pinchin DSS
1-20h	Resident Suite (Room 116)	Ceiling	Texture Finish	Asbestos	2010-13085-A-09-02	None Detected	N/A	N/A	From ECOH 2010 Reassessment Report
1-20h	Resident Suite (Room 116)	Ceiling	Drywall Joint Compound	Asbestos	2014 A-002 a-f	None Detected	N/A	N/A	2014 Pinchin DSS Reassessment
1-20h	Resident Suite (Room 116)	Pipe	Uninsulated	N/A	N/A	N/A	N/A	N/A	
1-20h	Resident Suite (Room 116)	Duct	Uninsulated	N/A	N/A	N/A	N/A	N/A	
1-20i	Resident Suite (Room 117)	Floor	Vinyl Floor Tiles (VFT02)	Asbestos	2014 A-001 a-c	None Detected	N/A	N/A	VFT02 - 12" x 12" cream with blue fleck. 2014 Pinchin DSS Reassessment
1-20i	Resident Suite (Room 117)	Floor	Ceramic	N/A	N/A	N/A	N/A	N/A	
1-20i	Resident Suite (Room 117)	Wall	Drywall Joint Compound	Asbestos	2014 A-002 a-f	None Detected	N/A	N/A	2014 Pinchin DSS Reassessment
1-20i	Resident Suite (Room 117)	Ceiling	Texture Finish	Asbestos	2010-13085-A-09-02	None Detected	N/A	N/A	From ECOH 2010 Reassessment Report
1-20i	Resident Suite (Room 117)	Ceiling	Drywall Joint Compound	Asbestos	2014 A-002 a-f	None Detected	N/A	N/A	2014 Pinchin DSS Reassessment
1-20j,k	Resident Suite (Rooms 118,119)	Floor	Vinyl Floor Tiles (VFT02)	Asbestos	2014 A-001 a-c	None Detected	N/A	N/A	VFT02 - 12" x 12" cream with blue fleck. 2014 Pinchin DSS Reassessment
1-20j,k	Resident Suite (Rooms 118,119)	Floor	Ceramic	N/A	N/A	N/A	N/A	N/A	
1-20j,k	Resident Suite (Rooms 118,119)	Wall	Drywall Joint Compound	Asbestos	2014 A-002 a-f	None Detected	N/A	N/A	2014 Pinchin DSS Reassessment
1-20j,k	Resident Suite (Rooms 118,119)	Floor	Ceramic	N/A	N/A	N/A	N/A	N/A	
1-20j,k	Resident Suite (Rooms 118,119)	Ceiling	Acoustic Ceiling Tiles (ACT01)	Asbestos	2014 A003A-C	None Detected	N/A	N/A	ACT 01- 2'x2' small fissures and pin hole-same throughout building. 2014 Pinchin DSS
1-20j,k	Resident Suite (Rooms 118,119)	Ceiling	Texture Finish	Asbestos	2010-13085-A-09-02	None Detected	N/A	N/A	From ECOH 2010 Reassessment Report
1-20j,k	Resident Suite (Rooms 118,119)	Ceiling	Drywall Joint Compound	Asbestos	2014 A-002 a-f	None Detected	N/A	N/A	2014 Pinchin DSS Reassessment
1-20j,k	Resident Suite (Rooms 118,119)	Pipe	Uninsulated	N/A	N/A	N/A	N/A	N/A	
1-20j,k	Resident Suite (Rooms 118,119)	Duct	Uninsulated	N/A	N/A	N/A	N/A	N/A	
1-20l	Resident Suite (Room 120)	Floor	Vinyl Floor Tiles (VFT02)	Asbestos	2014 A-001 a-c	None Detected	N/A	N/A	VFT02 - 12" x 12" cream with blue fleck. 2014 Pinchin DSS Reassessment
1-20l	Resident Suite (Room 120)	Floor	Ceramic	N/A	N/A	N/A	N/A	N/A	
1-20l	Resident Suite (Room 120)	Wall	Drywall Joint Compound	Asbestos	2014 A-002 a-f	None Detected	N/A	N/A	2014 Pinchin DSS Reassessment
1-20l	Resident Suite (Room 120)	Wall	Ceramic	N/A	N/A	N/A	N/A	N/A	
1-20l	Resident Suite (Room 120)	Ceiling	Acoustic Ceiling Tiles (ACT01)	Asbestos	2014 A003A-C	None Detected	N/A	N/A	ACT 01- 2'x2' small fissures and pin hole-same throughout building. 2014 Pinchin DSS

APPENDIX I REASSESSMENT SURVEY FORM

Building Address		4222 Kingston Road, Toronto, ON.			Date(s) of Current Survey:		November 20, 2023		
Building Name		Family Residence			Organization Completing Survey:		Safetech Environmental Limited		
<b>Summary Findings: All previously identified or suspect asbestos containing materials were observed to be in GOOD condition.</b>									
Location Number	Location Name	Building System	Material Observed	Potential Hazardous Material	Sample ID	Analytical Result	Quantity	Condition	Notes / Recommended Actions
1-20l	Resident Suite (Room 120)	Ceiling	Texture Finish	Asbestos	2010-13085-A-09-02	None Detected	N/A	N/A	From ECOH 2010 Reassessment Report
1-20l	Resident Suite (Room 120)	Ceiling	Drywall Joint Compound	Asbestos	2014 A-002 a-f	None Detected	N/A	N/A	2014 Pinchin DSS Reassessment
1-20l	Resident Suite (Room 120)	Pipe	Uninsulated	N/A	N/A	N/A	N/A	N/A	
1-20l	Resident Suite (Room 120)	Duct	Uninsulated	N/A	N/A	N/A	N/A	N/A	
1-20m	Resident Suite (Rooms 121,122)	Floor	Vinyl Floor Tiles (VFT02)	Asbestos	2014 A-001 a-c	None Detected	N/A	N/A	VFT02 - 12" x 12" cream with blue fleck. 2014 Pinchin DSS Reassessment
1-20m	Resident Suite (Rooms 121,122)	Floor	Vinyl Floor Tiles (VFT05)	Asbestos	2014 A-009 a-c	None Detected	N/A	N/A	VFT05 - 12 x 12 Tan Mottled
1-20m	Resident Suite (Rooms 121,122)	Floor	Ceramic	N/A	N/A	N/A	N/A	N/A	
1-20m	Resident Suite (Rooms 121,122)	Wall	Drywall Joint Compound	Asbestos	2014 A-002 a-f	None Detected	N/A	N/A	2014 Pinchin DSS Reassessment
1-20m	Resident Suite (Rooms 121,122)	Wall	Ceramic	N/A	N/A	N/A	N/A	N/A	
1-20m	Resident Suite (Rooms 121,122)	Ceiling	Acoustic Ceiling Tiles (ACT01)	Asbestos	2014 A003A-C	None Detected	N/A	N/A	ACT 01- 2'x2' small fissures and pin hole-same throughout building. 2014 Pinchin DSS
1-20m	Resident Suite (Rooms 121,122)	Ceiling	Texture Finish	Asbestos	2010-13085-A-09-02	None Detected	N/A	N/A	From ECOH 2010 Reassessment Report
1-20m	Resident Suite (Rooms 121,122)	Ceiling	Drywall Joint Compound	Asbestos	2014 A-002 a-f	None Detected	N/A	N/A	2014 Pinchin DSS Reassessment
1-20m	Resident Suite (Rooms 121,122)	Pipe	Uninsulated	N/A	N/A	N/A	N/A	N/A	
1-20m	Resident Suite (Rooms 121,122)	Duct	Uninsulated	N/A	N/A	N/A	N/A	N/A	
1-21	Kitchen & Janitor's Closet	Floor	Vinyl Floor Tiles (VFT01)	Asbestos	2014 A-010 a-c	None Detected	N/A	N/A	VFT01 - 12" x 12" beige with brown fleck. 2014 Pinchin DSS Reassessment
1-21	Kitchen & Janitor's Closet	Floor	Ceramic	N/A	N/A	N/A	N/A	N/A	
1-21	Kitchen & Janitor's Closet	Wall	Drywall Joint Compound	Asbestos	2014 A-002 a-f	None Detected	N/A	N/A	2014 Pinchin DSS Reassessment
1-21	Kitchen & Janitor's Closet	Wall	Ceramic	N/A	N/A	N/A	N/A	N/A	
1-21	Kitchen & Janitor's Closet	Ceiling	Acoustic Ceiling Tiles (ACT01)	Asbestos	2014 A003A-C	None Detected	N/A	N/A	ACT 01- 2'x2' small fissures and pin hole-same throughout building. 2014 Pinchin DSS
1-21	Kitchen & Janitor's Closet	Ceiling	Texture Finish	Asbestos	2010-13085-A-09-02	None Detected	N/A	N/A	From ECOH 2010 Reassessment Report
1-21	Kitchen & Janitor's Closet	Ceiling	Drywall Joint Compound	Asbestos	2014 A-002 a-f	None Detected	N/A	N/A	2014 Pinchin DSS Reassessment
1-21	Kitchen & Janitor's Closet	Ceiling	Drywall Joint Compound	Water-Damage	N/A	N/A	~50 SF	Poor	Level 1 Mould Remediation Recommended
1-21	Kitchen & Janitor's Closet	Pipe	Uninsulated	N/A	N/A	N/A	N/A	N/A	
1-21	Kitchen & Janitor's Closet	Duct	Uninsulated	N/A	N/A	N/A	N/A	N/A	
1-22	Washroom	Floor	Ceramic	N/A	N/A	N/A	N/A	N/A	
1-22	Washroom	Wall	Concrete	N/A	N/A	N/A	N/A	N/A	
1-22	Washroom	Ceiling	Drywall Joint Compound	Asbestos	2014 A-002 a-f	None Detected	N/A	N/A	2014 Pinchin DSS Reassessment
1-23	Garbage Room	Floor	Concrete	N/A	N/A	N/A	N/A	N/A	
1-23	Garbage Room	Wall	Drywall Joint Compound	Asbestos	2014 A-002 a-f	None Detected	N/A	N/A	2014 Pinchin DSS Reassessment

APPENDIX I REASSESSMENT SURVEY FORM

Building Address		4222 Kingston Road, Toronto, ON.			Date(s) of Current Survey:		November 20, 2023		
Building Name		Family Residence			Organization Completing Survey:		Safetech Environmental Limited		
<b>Summary Findings: All previously identified or suspect asbestos containing materials were observed to be in GOOD condition.</b>									
Location Number	Location Name	Building System	Material Observed	Potential Hazardous Material	Sample ID	Analytical Result	Quantity	Condition	Notes / Recommended Actions
1-23	Garbage Room	Ceiling	Acoustic Ceiling Tiles (ACT01)	Asbestos	2014 A003A-C	None Detected	N/A	N/A	ACT 01- 2'x2' small fissures and pin hole-same throughout building. 2014 Pinchin DSS
1-23	Garbage Room	Pipe	Uninsulated	N/A	N/A	N/A	N/A	N/A	
1-23	Garbage Room	Duct	Uninsulated	N/A	N/A	N/A	N/A	N/A	
1-24a,b	Stairwell	Floor	N/A	N/A	N/A	N/A	N/A	N/A	
1-24a,b	Stairwell	Wall	N/A	N/A	N/A	N/A	N/A	N/A	
1-24a,b	Stairwell	Ceiling	Texture Finish	Asbestos	2010-13085-A-09-02	None Detected	N/A	N/A	From ECOH 2010 Reassessment Report
1-25	Washroom	Floor	Ceramic	N/A	N/A	N/A	N/A	N/A	
1-25	Washroom	Wall	Concrete	N/A	N/A	N/A	N/A	N/A	
1-25	Washroom	Ceiling	Drywall Joint Compound	Asbestos	2014 A-002 a-f	None Detected	N/A	N/A	2014 Pinchin DSS Reassessment
1-26	Vault	Floor	Vinyl Floor Tiles (VFT02)	Asbestos	2014 A-001 a-c	None Detected	N/A	N/A	VFT02 - 12" x 12" cream with blue fleck. 2014 Pinchin DSS Reassessment
1-26	Vault	Wall	Drywall Joint Compound	Asbestos	2014 A-002 a-f	None Detected	N/A	N/A	2014 Pinchin DSS Reassessment
1-26	Vault	Ceiling	Texture Finish	Asbestos	2010-13085-A-09-02	None Detected	N/A	N/A	From ECOH 2010 Reassessment Report
1-27	Daycare Centre	Floor	Vinyl Floor Tiles (VFT06)	Asbestos	2014 A-008 a-c	None Detected	N/A	N/A	VFT06 - 12" x 12" light blue and Dark Blue (included as one)
1-27	Daycare Centre	Floor	Vinyl Floor Tiles (VFT06)	Asbestos	2014 A-010 a-c	None Detected	N/A	N/A	VFT01-12"x12" Beige with brown fleck. 204 Pinchin DSS Reassessment
1-27	Daycare Centre	Floor	Carpet	N/A	N/A	N/A	N/A	N/A	
1-27	Daycare Centre	Floor	Concrete	N/A	N/A	N/A	N/A	N/A	
1-27	Daycare Centre	Wall	Drywall Joint Compound	Asbestos	2014 A-002 a-f	None Detected	N/A	N/A	2014 Pinchin DSS Reassessment
1-27	Daycare Centre	Wall	Concrete Block	N/A	N/A	N/A	N/A	N/A	
1-27	Daycare Centre	Ceiling	Drywall Joint Compound	Asbestos	2014 A-002 a-f	None Detected	N/A	N/A	2014 Pinchin DSS Reassessment
1-27	Daycare Centre	Pipe	Uninsulated	N/A	N/A	N/A	N/A	N/A	
1-27	Daycare Centre	Duct	Uninsulated	N/A	N/A	N/A	N/A	N/A	
2-01	Suite 201	Floor	Vinyl Floor Tiles (VFT02)	Asbestos	2014 A-001 a-c	None Detected	N/A	N/A	VFT02 - 12" x 12" cream with blue fleck. 2014 Pinchin DSS Reassessment
2-01	Suite 201	Wall	Drywall Joint Compound	Asbestos	2014 A-002 a-f	None Detected	N/A	N/A	2014 Pinchin DSS Reassessment
2-01	Suite 201	Ceiling	Acoustic Ceiling Tiles (ACT01)	Asbestos	2014 A003A-C	None Detected	N/A	N/A	ACT 01- 2'x2' small fissures and pin hole-same throughout building. 2014 Pinchin DSS
2-01	Suite 201	Ceiling	Texture Finish	Asbestos	2010-13085-A-09-02	None Detected	N/A	N/A	From ECOH 2010 Reassessment Report
2-01	Suite 201	Ceiling	Drywall Joint Compound	Asbestos	2014 A-002 a-f	None Detected	N/A	N/A	2014 Pinchin DSS Reassessment
2-02	Suite 202	Floor	Vinyl Floor Tiles (VFT02)	Asbestos	2014 A-001 a-c	None Detected	N/A	N/A	VFT02 - 12" x 12" cream with blue fleck. 2014 Pinchin DSS Reassessment
2-02	Suite 202	Floor	Ceramic	N/A	N/A	N/A	N/A	N/A	
2-02	Suite 202	Wall	Drywall Joint Compound	Asbestos	2014 A-002 a-f	None Detected	N/A	N/A	2014 Pinchin DSS Reassessment



APPENDIX I REASSESSMENT SURVEY FORM

Building Address		4222 Kingston Road, Toronto, ON.			Date(s) of Current Survey:		November 20, 2023		
Building Name		Family Residence			Organization Completing Survey:		Safetech Environmental Limited		
<b>Summary Findings: All previously identified or suspect asbestos containing materials were observed to be in GOOD condition.</b>									
Location Number	Location Name	Building System	Material Observed	Potential Hazardous Material	Sample ID	Analytical Result	Quantity	Condition	Notes / Recommended Actions
2-02	Suite 202	Wall	Ceramic	N/A	N/A	N/A	N/A	N/A	
2-02	Suite 202	Ceiling	Acoustic Ceiling Tiles (ACT01)	Asbestos	2014 A003A-C	None Detected	N/A	N/A	ACT 01- 2'x2' small fissures and pin hole-same throughout building. 2014 Pinchin DSS
2-02	Suite 202	Ceiling	Texture Finish	Asbestos	2010-13085-A-09-02	None Detected	N/A	N/A	From ECOH 2010 Reassessment Report
2-02	Suite 202	Ceiling	Drywall Joint Compound	Asbestos	2014 A-002 a-f	None Detected	N/A	N/A	2014 Pinchin DSS Reassessment
2-02	Suite 202	Pipe	Uninsulated	N/A	N/A	N/A	N/A	N/A	
2-02	Suite 202	Duct	Uninsulated	N/A	N/A	N/A	N/A	N/A	
2-03	Suite 203	Floor	Vinyl Floor Tiles (VFT02)	Asbestos	2014 A-001 a-c	None Detected	N/A	N/A	VFT02 - 12" x 12" cream with blue fleck. 2014 Pinchin DSS Reassessment
2-03	Suite 203	Floor	Ceramic	N/A	N/A	N/A	N/A	N/A	
2-03	Suite 203	Wall	Drywall Joint Compound	Asbestos	2014 A-002 a-f	None Detected	N/A	N/A	From ECOH 2010 Reassessment Report. 2014 Pinchin DSS Reassessment
2-03	Suite 203	Wall	Ceramic	N/A	N/A	N/A	N/A	N/A	
2-03	Suite 203	Ceiling	Acoustic Ceiling Tiles (ACT01)	Asbestos	2014 A003A-C	None Detected	N/A	N/A	ACT 01- 2'x2' small fissures and pin hole-same throughout building. 2014 Pinchin DSS
2-03	Suite 203	Ceiling	Texture Finish	Asbestos	2010-13085-A-09-02	None Detected	N/A	N/A	From ECOH 2010 Reassessment Report
2-03	Suite 203	Ceiling	Drywall Joint Compound	Asbestos	2014 A-002 a-f	None Detected	N/A	N/A	2014 Pinchin DSS Reassessment
2-03	Suite 203	Pipe	Uninsulated	N/A	N/A	N/A	N/A	N/A	
2-03	Suite 203	Pipe	Fibreglass	N/A	N/A	N/A	N/A	N/A	
2-03	Suite 203	Duct	Uninsulated	N/A	N/A	N/A	N/A	N/A	
2-04	Suite 204	Floor	Vinyl Floor Tiles (VFT02)	Asbestos	2014 A-001 a-c	None Detected	N/A	N/A	VFT02 - 12" x 12" cream with blue fleck. 2014 Pinchin DSS Reassessment
2-04	Suite 204	Floor	Ceramic	N/A	N/A	N/A	N/A	N/A	
2-04	Suite 204	Wall	Drywall Joint Compound	Asbestos	2014 A-002 a-f	None Detected	N/A	N/A	2014 Pinchin DSS Reassessment
2-04	Suite 204	Wall	Ceramic	N/A	N/A	N/A	N/A	N/A	
2-04	Suite 204	Ceiling	Acoustic Ceiling Tiles (ACT01)	Asbestos	2014 A003A-C	None Detected	N/A	N/A	ACT 01- 2'x2' small fissures and pin hole-same throughout building. 2014 Pinchin DSS
2-04	Suite 204	Ceiling	Texture Finish	Asbestos	2010-13085-A-09-02	None Detected	N/A	N/A	From ECOH 2010 Reassessment Report
2-04	Suite 204	Ceiling	Drywall Joint Compound	Asbestos	2014 A-002 a-f	None Detected	N/A	N/A	2014 Pinchin DSS Reassessment
2-04	Suite 204	Pipe	Uninsulated	N/A	N/A	N/A	N/A	N/A	
2-04	Suite 204	Pipe	Fibreglass	N/A	N/A	N/A	N/A	N/A	
2-04	Suite 204	Duct	Uninsulated	N/A	N/A	N/A	N/A	N/A	
2-05	Suite 205	Floor	Vinyl Floor Tiles (VFT07)	Asbestos	2014 A-004 a-c	None Detected	N/A	N/A	VFT07 - 12" x 12" Blue with dark blue fleck. 2014 Pinchin DSS Reassessment
2-05	Suite 205	Floor	Ceramic	N/A	N/A	N/A	N/A	N/A	
2-05	Suite 205	Wall	Drywall Joint Compound	Asbestos	2013-14739-ASB-01A	None Detected	N/A	N/A	Bedroom and Hallway (01A-C) Washroom Doorway (03A-C)

APPENDIX I REASSESSMENT SURVEY FORM

Building Address		4222 Kingston Road, Toronto, ON.			Date(s) of Current Survey:		November 20, 2023		
Building Name		Family Residence			Organization Completing Survey:		Safetech Environmental Limited		
<b>Summary Findings: All previously identified or suspect asbestos containing materials were observed to be in GOOD condition.</b>									
Location Number	Location Name	Building System	Material Observed	Potential Hazardous Material	Sample ID	Analytical Result	Quantity	Condition	Notes / Recommended Actions
2-05	Suite 205	Wall	Ceramic	N/A	N/A	N/A	N/A	N/A	
2-05	Suite 205	Ceiling	Texture Finish	Asbestos	2010-13085-A-09-02	None Detected	N/A	N/A	From ECOH 2010 Reassessment Report
2-05	Suite 205	Ceiling	Drywall Joint Compound	Asbestos	2013-14739-ASB-01A	None Detected	N/A	N/A	Washroom Ceiling Sampled during ECOH 2013 Mould
2-05	Suite 205	Pipe	Uninsulated	N/A	N/A	N/A	N/A	N/A	
2-05	Suite 205	Pipe	Fibreglass	N/A	N/A	N/A	N/A	N/A	
2-05	Suite 205	Duct	Uninsulated	N/A	N/A	N/A	N/A	N/A	
2-06	Suite 206	Floor	Vinyl Floor Tiles (VFT07)	Asbestos	2014 A-004 a-c	None Detected	N/A	N/A	VFT07 - 12" x 12" Blue with dark blue fleck. 2014 Pinchin DSS Reassessment
2-06	Suite 206	Floor	Ceramic	N/A	N/A	N/A	N/A	N/A	
2-06	Suite 206	Wall	Drywall Joint Compound	Asbestos	2014 A-002 a-f	None Detected	N/A	N/A	2014 Pinchin DSS Reassessment
2-06	Suite 206	Wall	Ceramic	N/A	N/A	N/A	N/A	N/A	
2-06	Suite 206	Ceiling	Texture Finish	Asbestos	2010-13085-A-09-02	None Detected	N/A	N/A	From ECOH 2010 Reassessment Report
2-06	Suite 206	Ceiling	Drywall Joint Compound	Asbestos	2014 A-002 a-f	None Detected	N/A	N/A	2014 Pinchin DSS Reassessment
2-06	Suite 206	Pipe	Uninsulated	N/A	N/A	N/A	N/A	N/A	
2-06	Suite 206	Pipe	Fibreglass	N/A	N/A	N/A	N/A	N/A	
2-06	Suite 206	Duct	Uninsulated	N/A	N/A	N/A	N/A	N/A	
2-07	Suite 207	Floor	Vinyl Floor Tiles (VFT02)	Asbestos	2014 A-001 a-c	None Detected	N/A	N/A	VFT02 - 12" x 12" cream with blue fleck. 2014 Pinchin DSS Reassessment
2-07	Suite 207	Floor	Ceramic	N/A	N/A	N/A	N/A	N/A	
2-07	Suite 207	Wall	Drywall Joint Compound	Asbestos	2014 A-002 a-f	None Detected	N/A	N/A	2014 Pinchin DSS Reassessment
2-07	Suite 207	Wall	Ceramic	N/A	N/A	N/A	N/A	N/A	
2-07	Suite 207	Ceiling	Texture Finish	Asbestos	2010-13085-A-09-02	None Detected	N/A	N/A	From ECOH 2010 Reassessment Report
2-07	Suite 207	Ceiling	Drywall Joint Compound	Asbestos	2014 A-002 a-f	None Detected	N/A	N/A	2014 Pinchin DSS Reassessment
2-07	Suite 207	Pipe	Uninsulated	N/A	N/A	N/A	N/A	N/A	
2-07	Suite 207	Pipe	Fibreglass	N/A	N/A	N/A	N/A	N/A	
2-07	Suite 207	Duct	Uninsulated	N/A	N/A	N/A	N/A	N/A	
2-08	Kitchen & Janitor's Closet	Floor	Vinyl Floor Tiles (VFT03)	Asbestos	2015-A0011A-C	None Detected	N/A	N/A	VFT03 - 12" x 12" black with white flecks
2-08	Kitchen & Janitor's Closet	Floor	Vinyl Floor Tiles (VFT04)	Asbestos	2015-A0012A-C	None Detected	N/A	N/A	VFT04 - 12" x 12" white with black flecks
2-08	Kitchen & Janitor's Closet	Floor	Ceramic	N/A	N/A	N/A	N/A	N/A	
2-08	Kitchen & Janitor's Closet	Wall	Drywall Joint Compound	Asbestos	2014 A-002 a-f	None Detected	N/A	N/A	2014 Pinchin DSS Reassessment
2-08	Kitchen & Janitor's Closet	Wall	Ceramic	N/A	N/A	N/A	N/A	N/A	

APPENDIX I REASSESSMENT SURVEY FORM

Building Address		4222 Kingston Road, Toronto, ON.			Date(s) of Current Survey:		November 20, 2023		
Building Name		Family Residence			Organization Completing Survey:		Safetech Environmental Limited		
<b>Summary Findings: All previously identified or suspect asbestos containing materials were observed to be in GOOD condition.</b>									
Location Number	Location Name	Building System	Material Observed	Potential Hazardous Material	Sample ID	Analytical Result	Quantity	Condition	Notes / Recommended Actions
2-08	Kitchen & Janitor's Closet	Ceiling	Acoustic Ceiling Tiles (ACT01)	Asbestos	2014 A003A-C	None Detected	N/A	N/A	ACT 01- 2'x2' small fissures and pin hole-same throughout building. 2014 Pinchin DSS
2-08	Kitchen & Janitor's Closet	Ceiling	Texture Finish	Asbestos	2010-13085-A-09-02	None Detected	N/A	N/A	From ECOH 2010 Reassessment Report
2-08	Kitchen & Janitor's Closet	Ceiling	Drywall Joint Compound	Asbestos	2014 A-002 a-f	None Detected	N/A	N/A	2014 Pinchin DSS Reassessment
2-08	Kitchen & Janitor's Closet	Pipe	Uninsulated	N/A	N/A	N/A	N/A	N/A	
2-08	Kitchen & Janitor's Closet	Pipe	Fibreglass	N/A	N/A	N/A	N/A	N/A	
2-08	Kitchen & Janitor's Closet	Duct	Uninsulated	N/A	N/A	N/A	N/A	N/A	
2-09	Laundry & Janitor's Closet	Floor	Vinyl Floor Tiles (VFT07)	Asbestos	2014 A-004 a-c	None Detected	N/A	N/A	VFT07 - 12" x 12" Blue with dark blue fleck. 2014 Pinchin DSS Reassessment
2-09	Laundry & Janitor's Closet	Floor	Ceramic	N/A	N/A	N/A	N/A	N/A	
2-09	Laundry & Janitor's Closet	Wall	Drywall Joint Compound	Asbestos	N/A7- 12642-09-01a,b,c	None Detected	N/A	N/A	From ECOH N/A9 Reassessment Report Sampled during Pinchin 2012 Pre-reno DSS
2-09	Laundry & Janitor's Closet	Wall	Ceramic	N/A	N/A	N/A	N/A	N/A	
2-09	Laundry & Janitor's Closet	Ceiling	Texture Finish	Asbestos	N/A7-140706267-0004	None Detected	N/A	N/A	From Fisher N/A7 DSS Report
2-09	Laundry & Janitor's Closet	Ceiling	Drywall Joint Compound	Asbestos	N/A7- 12642-09-01a,b,c	None Detected	N/A	N/A	From ECOH N/A9 Reassessment Report
2-09	Laundry & Janitor's Closet	Pipe	Uninsulated	N/A	N/A	N/A	N/A	N/A	
2-09	Laundry & Janitor's Closet	Pipe	Fibreglass	N/A	N/A	N/A	N/A	N/A	
2-09	Laundry & Janitor's Closet	Duct	Uninsulated	N/A	N/A	N/A	N/A	N/A	
2-10	Suite 210	Floor	Vinyl Floor Tiles (VFT02)	Asbestos	2014 A-001 a-c	None Detected	N/A	N/A	VFT02 - 12" x 12" cream with blue fleck. 2014 Pinchin DSS Reassessment
2-10	Suite 210	Floor	Ceramic	N/A	N/A	N/A	N/A	N/A	
2-10	Suite 210	Wall	Drywall Joint Compound	Asbestos	2014 A-002 a-f	None Detected	N/A	N/A	2014 Pinchin DSS Reassessment
2-10	Suite 210	Wall	Ceramic	N/A	N/A	N/A	N/A	N/A	
2-10	Suite 210	Ceiling	Texture Finish	Asbestos	2010-13085-A-09-02	None Detected	N/A	N/A	From ECOH 2010 Reassessment Report
2-10	Suite 210	Ceiling	Drywall Joint Compound	Asbestos	2014 A-002 a-f	None Detected	N/A	N/A	2014 Pinchin DSS Reassessment
2-10	Suite 210	Pipe	Uninsulated	N/A	N/A	N/A	N/A	N/A	
2-10	Suite 210	Pipe	Fibreglass	N/A	N/A	N/A	N/A	N/A	
2-10	Suite 210	Duct	Uninsulated	N/A	N/A	N/A	N/A	N/A	
2-11	Suite 211	Floor	Vinyl Floor Tiles (VFT07)	Asbestos	2014 A-004 a-c	None Detected	N/A	N/A	VFT07 - 12" x 12" Blue with dark blue fleck. 2014 Pinchin DSS Reassessment
2-11	Suite 211	Floor	Ceramic	N/A	N/A	N/A	N/A	N/A	
2-11	Suite 211	Wall	Drywall Joint Compound	Asbestos	2014 A-002 a-f	None Detected	N/A	N/A	2014 Pinchin DSS Reassessment
2-11	Suite 211	Wall	Ceramic	N/A	N/A	N/A	N/A	N/A	
2-11	Suite 211	Ceiling	Acoustic Ceiling Tiles (ACT01)	Asbestos	2014 A003A-C	None Detected	N/A	N/A	ACT 01- 2'x2' small fissures and pin hole-same throughout building. 2014 Pinchin DSS

APPENDIX I REASSESSMENT SURVEY FORM

Building Address		4222 Kingston Road, Toronto, ON.			Date(s) of Current Survey:		November 20, 2023		
Building Name		Family Residence			Organization Completing Survey:		Safetech Environmental Limited		
<b>Summary Findings: All previously identified or suspect asbestos containing materials were observed to be in GOOD condition.</b>									
Location Number	Location Name	Building System	Material Observed	Potential Hazardous Material	Sample ID	Analytical Result	Quantity	Condition	Notes / Recommended Actions
2-11	Suite 211	Ceiling	Texture Finish	Asbestos	2010-13085-A-09-02	None Detected	N/A	N/A	From ECOH 2010 Reassessment Report
2-11	Suite 211	Ceiling	Drywall Joint Compound	Asbestos	2014 A-002 a-f	None Detected	N/A	N/A	2014 Pinchin DSS Reassessment
2-11	Suite 211	Pipe	Uninsulated	N/A	N/A	N/A	N/A	N/A	
2-11	Suite 211	Pipe	Fibreglass	N/A	N/A	N/A	N/A	N/A	
2-11	Suite 211	Duct	Uninsulated	N/A	N/A	N/A	N/A	N/A	
2-12	Suite 212	Floor	Vinyl Floor Tiles (VFT02)	Asbestos	2014 A-001 a-c	None Detected	N/A	N/A	VFT02 - 12" x 12" cream with blue fleck. 2014 Pinchin DSS Reassessment
2-12	Suite 212	Floor	Ceramic	N/A	N/A	N/A	N/A	N/A	
2-12	Suite 212	Wall	Drywall Joint Compound	Asbestos	2014 A-002 a-f	None Detected	N/A	N/A	2014 Pinchin DSS Reassessment
2-12	Suite 212	Wall	Ceramic	N/A	N/A	N/A	N/A	N/A	
2-12	Suite 212	Ceiling	Acoustic Ceiling Tiles (ACT01)	Asbestos	2014 A003A-C	None Detected	N/A	N/A	ACT 01- 2'x2' small fissures and pin hole-same throughout building. 2014 Pinchin DSS
2-12	Suite 212	Ceiling	Texture Finish	Asbestos	2010-13085-A-09-02	None Detected	N/A	N/A	From ECOH 2010 Reassessment Report

APPENDIX I REASSESSMENT SURVEY FORM

Building Address		4222 Kingston Road, Toronto, ON.			Date(s) of Current Survey:		November 20, 2023		
Building Name		Family Residence			Organization Completing Survey:		Safetech Environmental Limited		
<b>Summary Findings: All previously identified or suspect asbestos containing materials were observed to be in GOOD condition.</b>									
Location Number	Location Name	Building System	Material Observed	Potential Hazardous Material	Sample ID	Analytical Result	Quantity	Condition	Notes / Recommended Actions
2-12	Suite 212	Ceiling	Drywall Joint Compound	Asbestos	2014 A-002 a-f	None Detected	N/A	N/A	2014 Pinchin DSS Reassessment
2-12	Suite 212	Pipe	Uninsulated	N/A	N/A	N/A	N/A	N/A	
2-12	Suite 212	Pipe	Fibreglass	N/A	N/A	N/A	N/A	N/A	
2-12	Suite 212	Duct	Uninsulated	N/A	N/A	N/A	N/A	N/A	
2-13	Electrical Room	Floor	Concrete	N/A	N/A	N/A	N/A	N/A	
2-13	Electrical Room	Wall	Drywall Joint Compound	Asbestos	2014 A-002 a-f	None Detected	N/A	N/A	2014 Pinchin DSS Reassessment
2-13	Electrical Room	Ceiling	Drywall Joint Compound	Asbestos	2014 A-002 a-f	None Detected	N/A	N/A	2014 Pinchin DSS Reassessment
2-13	Electrical Room	Pipe	Uninsulated	N/A	N/A	N/A	N/A	N/A	
2-14	Suite 214	Floor	Vinyl Floor Tiles (VFT07)	Asbestos	2014 A-004 a-c	None Detected	N/A	N/A	VFT07 - 12" x 12" Blue with dark blue fleck. 2014 Pinchin DSS Reassessment
2-14	Suite 214	Wall	Ceramic	N/A	N/A	N/A	N/A	N/A	
2-14	Suite 214	Wall	Drywall Joint Compound	Asbestos	2014 A-002 a-f	None Detected	N/A	N/A	2014 Pinchin DSS Reassessment
2-14	Suite 214	Wall	Ceramic	N/A	N/A	N/A	N/A	N/A	
2-14	Suite 214	Ceiling	Acoustic Ceiling Tiles (ACT01)	Asbestos	2014 A003A-C	None Detected	N/A	N/A	ACT 01- 2'x2' small fissures and pin hole- same throughout building. 2014 Pinchin DSS
2-14	Suite 214	Ceiling	Texture Finish	Asbestos	2010-13085-A-09-02	None Detected	N/A	N/A	2014 Pinchin DSS Reassessment
2-14	Suite 214	Ceiling	Drywall Joint Compound	Asbestos	2014 A-002 a-f	None Detected	N/A	N/A	2014 Pinchin DSS Reassessment
2-14	Suite 214	Pipe	Uninsulated	N/A	N/A	N/A	N/A	N/A	
2-14	Suite 214	Pipe	Fibreglass	N/A	N/A	N/A	N/A	N/A	
2-14	Suite 214	Duct	Uninsulated	N/A	N/A	N/A	N/A	N/A	
2-15	Suite 215	Floor	Vinyl Floor Tiles (VFT02)	Asbestos	2014 A-001 a-c	None Detected	N/A	N/A	VFT02 - 12" x 12" cream with blue fleck. 2014 Pinchin DSS Reassessment
2-15	Suite 215	Wall	Ceramic	N/A	N/A	N/A	N/A	N/A	
2-15	Suite 215	Wall	Drywall Joint Compound	Asbestos	2014 A-002 a-f	None Detected	N/A	N/A	2014 Pinchin DSS Reassessment
2-15	Suite 215	Wall	Ceramic	N/A	N/A	N/A	N/A	N/A	
2-15	Suite 215	Ceiling	Texture Finish	Asbestos	2010-13085-A-09-02	None Detected	N/A	N/A	From ECOH 2010 Reassessment Report
2-15	Suite 215	Ceiling	Drywall Joint Compound	Asbestos	2014 A-002 a-f	None Detected	N/A	N/A	2014 Pinchin DSS Reassessment
2-15	Suite 215	Pipe	Uninsulated	N/A	N/A	N/A	N/A	N/A	
2-15	Suite 215	Pipe	Fibreglass	N/A	N/A	N/A	N/A	N/A	
2-15	Suite 215	Duct	Uninsulated	N/A	N/A	N/A	N/A	N/A	
2-16	Suite 216	Floor	Vinyl Floor Tiles (VFT02)	Asbestos	2014 A-001 a-c	None Detected	N/A	N/A	VFT02 - 12" x 12" cream with blue fleck. 2014 Pinchin DSS Reassessment
2-16	Suite 216	Floor	Ceramic	N/A	N/A	N/A	N/A	N/A	

APPENDIX I REASSESSMENT SURVEY FORM

Building Address		4222 Kingston Road, Toronto, ON.			Date(s) of Current Survey:		November 20, 2023		
Building Name		Family Residence			Organization Completing Survey:		Safetech Environmental Limited		
<b>Summary Findings: All previously identified or suspect asbestos containing materials were observed to be in GOOD condition.</b>									
Location Number	Location Name	Building System	Material Observed	Potential Hazardous Material	Sample ID	Analytical Result	Quantity	Condition	Notes / Recommended Actions
2-16	Suite 216	Wall	Drywall Joint Compound	Asbestos	2014 A-002 a-f	None Detected	N/A	N/A	2014 Pinchin DSS Reassessment
2-16	Suite 216	Wall	Ceramic	N/A	N/A	N/A	N/A	N/A	
2-16	Suite 216	Ceiling	Texture Finish	Asbestos	2010-13085-A-09-02	None Detected	N/A	N/A	From ECOH 2010 Reassessment Report
2-16	Suite 216	Ceiling	Drywall Joint Compound	Asbestos	2014 A-002 a-f	None Detected	N/A	N/A	2014 Pinchin DSS Reassessment
2-16	Suite 216	Pipe	Uninsulated	N/A	N/A	N/A	N/A	N/A	
2-16	Suite 216	Pipe	Fibreglass	N/A	N/A	N/A	N/A	N/A	
2-16	Suite 216	Duct	Uninsulated	N/A	N/A	N/A	N/A	N/A	
2-17	Suite 217	Floor	Vinyl Floor Tiles (VFT02)	Asbestos	2014 A-001 a-c	None Detected	N/A	N/A	VFT02 - 12" x 12" cream with blue fleck. 2014 Pinchin DSS Reassessment
2-17	Suite 217	Wall	Drywall Joint Compound	Asbestos	2014 A-002 a-f	None Detected	N/A	N/A	2014 Pinchin DSS Reassessment
2-17	Suite 217	Ceiling	Texture Finish	Asbestos	2010-13085-A-09-02	None Detected	N/A	N/A	From ECOH 2010 Reassessment Report
2-17	Suite 217	Ceiling	Drywall Joint Compound	Asbestos	2014 A-002 a-f	None Detected	N/A	N/A	2014 Pinchin DSS Reassessment
2-18	Suite 218	Floor	Vinyl Floor Tiles (VFT)	Asbestos	2014 A-004 a-c	None Detected	N/A	N/A	VFT07 - 12" x 12" Blue with dark blue fleck. 2014 Pinchin DSS Reassessment
2-18	Suite 218	Floor	Ceramic	N/A	N/A	N/A	N/A	N/A	
2-18	Suite 218	Wall	Drywall Joint Compound	Asbestos	2013-14739-ASB-01A	None Detected	N/A	N/A	Sampled during ECOH 2013 Mould Assessment
2-18	Suite 218	Wall	Ceramic	N/A	N/A	N/A	N/A	N/A	
2-18	Suite 218	Ceiling	Acoustic Ceiling Tiles (ACT01)	Asbestos	2014 A003A-C	None Detected	N/A	N/A	ACT 01 - 2'x2' small fissures and pin hole-same throughout building. 2014 Pinchin DSS
2-18	Suite 218	Ceiling	Texture Finish	Asbestos	2010-13085-A-09-02	None Detected	N/A	N/A	From ECOH 2010 Reassessment Report
2-18	Suite 218	Ceiling	Drywall Joint Compound	Asbestos	2013-14739-ASB-01A	None Detected	N/A	N/A	Washroom Ceiling Sampled during ECOH 2013 Mould
2-18	Suite 218	Pipe	Uninsulated	N/A	N/A	N/A	N/A	N/A	
2-18	Suite 218	Pipe	Fibreglass	N/A	N/A	N/A	N/A	N/A	
2-18	Suite 218	Duct	Uninsulated	N/A	N/A	N/A	N/A	N/A	
2-19	Suite 219	Floor	Vinyl Floor Tiles (VFT07)	Asbestos	2014 A-004 a-c	None Detected	N/A	N/A	VFT07 - 12" x 12" Blue with dark blue fleck. 2014 Pinchin DSS Reassessment
2-19	Suite 219	Floor	Ceramic	N/A	N/A	N/A	N/A	N/A	
2-19	Suite 219	Wall	Drywall Joint Compound	Asbestos	2014 A-002 a-f	None Detected	N/A	N/A	From ECOH 2010 Reassessment Report. 2014 Pinchin DSS Reassessment
2-19	Suite 219	Wall	Ceramic	N/A	N/A	N/A	N/A	N/A	

APPENDIX I REASSESSMENT SURVEY FORM

Building Address	4222 Kingston Road, Toronto, ON.	Date(s) of Current Survey:	November 20, 2023
Building Name	Family Residence	Organization Completing Survey:	Safetech Environmental Limited

**Summary Findings:** All previously identified or suspect asbestos containing materials were observed to be in GOOD condition.

Location Number	Location Name	Building System	Material Observed	Potential Hazardous Material	Sample ID	Analytical Result	Quantity	Condition	Notes / Recommended Actions
2-19	Suite 219	Ceiling	Texture Finish	Asbestos	2010-13085-A-09-02	None Detected	N/A	N/A	From ECOH 2010 Reassessment Report
2-19	Suite 219	Ceiling	Drywall Joint Compound	Asbestos	2014 A-002 a-f	None Detected	N/A	N/A	2014 Pinchin DSS Reassessment
2-19	Suite 219	Pipe	Uninsulated	N/A	N/A	N/A	N/A	N/A	
2-19	Suite 219	Pipe	Fibreglass	N/A	N/A	N/A	N/A	N/A	
2-19	Suite 219	Duct	Uninsulated	N/A	N/A	N/A	N/A	N/A	
2-20	Suite 220	Floor	Vinyl Floor Tiles (VFT02)	Asbestos	2014 A-001 a-c	None Detected	N/A	N/A	VFT02 - 12" x 12" cream with blue fleck. 2014 Pinchin DSS Reassessment
2-20	Suite 220	Floor	Ceramic	N/A	N/A	N/A	N/A	N/A	
2-20	Suite 220	Wall	Drywall Joint Compound	Asbestos	2014 A-002 a-f	None Detected	N/A	N/A	2014 Pinchin DSS Reassessment
2-20	Suite 220	Wall	Ceramic	N/A	N/A	N/A	N/A	N/A	
2-20	Suite 220	Ceiling	Acoustic Ceiling Tiles (ACT01)	Asbestos	2014 A003A-C	None Detected	N/A	N/A	ACT 01- 2'x2' small fissures and pin hole-same throughout building. 2014 Pinchin DSS
2-20	Suite 220	Ceiling	Texture Finish	Asbestos	2010-13085-A-09-02	None Detected	N/A	N/A	From ECOH 2010 Reassessment Report
2-20	Suite 220	Ceiling	Drywall Joint Compound	Asbestos	2014 A-002 a-f	None Detected	N/A	N/A	2014 Pinchin DSS Reassessment
2-20	Suite 220	Pipe	Uninsulated	N/A	N/A	N/A	N/A	N/A	
2-20	Suite 220	Pipe	Fibreglass	N/A	N/A	N/A	N/A	N/A	
2-20	Suite 220	Duct	Uninsulated	N/A	N/A	N/A	N/A	N/A	
2-21	Suite 221	Floor	Vinyl Floor Tiles (VFT02)	Asbestos	2014 A-001 a-c	None Detected	N/A	N/A	VFT02 - 12" x 12" cream with blue fleck. 2014 Pinchin DSS Reassessment
2-21	Suite 221	Floor	Ceramic	N/A	N/A	N/A	N/A	N/A	
2-21	Suite 221	Wall	Drywall Joint Compound	Asbestos	2014 A-002 a-f	None Detected	N/A	N/A	
2-21	Suite 221	Wall	Ceramic	N/A	N/A	N/A	N/A	N/A	
2-21	Suite 221	Ceiling	Texture Finish	Asbestos	2010-13085-A-09-02	None Detected	N/A	N/A	From ECOH 2010 Reassessment Report
2-21	Suite 221	Ceiling	Drywall Joint Compound	Asbestos	2014 A-002 a-f	None Detected	N/A	N/A	2014 Pinchin DSS Reassessment
2-21	Suite 221	Pipe	Uninsulated	N/A	N/A	N/A	N/A	N/A	
2-21	Suite 221	Pipe	Fibreglass	N/A	N/A	N/A	N/A	N/A	
2-21	Suite 221	Duct	Uninsulated	N/A	N/A	N/A	N/A	N/A	
2-22	Suite 222	Floor	Vinyl Floor Tiles (VFT02)	Asbestos	2014 A-001 a-c	None Detected	N/A	N/A	VFT02 - 12" x 12" cream with blue fleck. 2014 Pinchin DSS Reassessment
2-22	Suite 222	Floor	Ceramic	N/A	N/A	N/A	N/A	N/A	
2-22	Suite 222	Wall	Drywall Joint Compound	Asbestos	2014 A-002 a-f	None Detected	N/A	N/A	2014 Pinchin DSS Reassessment
2-22	Suite 222	Wall	Drywall Joint Compound	Asbestos	2014 A-002 a-f	None Detected	N/A	N/A	2014 Pinchin DSS Reassessment
2-22	Suite 222	Wall	Ceramic	N/A	N/A	N/A	N/A	N/A	

APPENDIX I REASSESSMENT SURVEY FORM

Building Address	4222 Kingston Road, Toronto, ON.	Date(s) of Current Survey:	November 20, 2023
Building Name	Family Residence	Organization Completing Survey:	Safetech Environmental Limited

**Summary Findings:** All previously identified or suspect asbestos containing materials were observed to be in GOOD condition.

Location Number	Location Name	Building System	Material Observed	Potential Hazardous Material	Sample ID	Analytical Result	Quantity	Condition	Notes / Recommended Actions
2-22	Suite 222	Ceiling	Texture Finish	Asbestos	2010-13085-A-09-02	None Detected	N/A	N/A	From ECOH 2010 Reassessment Report
2-22	Suite 222	Ceiling	Drywall Joint Compound	Asbestos	2014 A-002 a-f	None Detected	N/A	N/A	2014 Pinchin DSS Reassessment
2-22	Suite 222	Pipe	Uninsulated	N/A	N/A	N/A	N/A	N/A	
2-22	Suite 222	Pipe	Fibreglass	N/A	N/A	N/A	N/A	N/A	
2-22	Suite 222	Duct	Uninsulated	N/A	N/A	N/A	N/A	N/A	
2-23a,b	Stairwell	Floor	metal	N/A	N/A	N/A	N/A	N/A	
2-23a,b	Stairwell	Wall	Concrete	N/A	N/A	N/A	N/A	N/A	
2-23a,b	Stairwell	Ceiling	Texture Finish	Asbestos	2010-13085-A-09-02	None Detected	N/A	N/A	From ECOH 2010 Reassessment Report
2-24	Hallway	Floor	carpet	N/A	N/A	N/A	N/A	N/A	
2-24	Hallway	Wall	Concrete	N/A	N/A	N/A	N/A	N/A	
2-24	Hallway	Ceiling	Texture Finish	Asbestos	2010-13085-A-09-02	None Detected	N/A	N/A	From ECOH 2010 Reassessment Report
3-01	Suite 301	Floor	Vinyl Floor Tiles (VFT02)	Asbestos	2014 A-001 a-c	None Detected	N/A	N/A	VFT02 - 12" x 12" cream with blue fleck. 2014 Pinchin DSS Reassessment
3-01	Suite 301	Wall	Drywall Joint Compound	Asbestos	2014 A-002 a-f	None Detected	N/A	N/A	2014 Pinchin DSS Reassessment
3-01	Suite 301	Ceiling	Texture Finish	Asbestos	2010-13085-A-09-01	None Detected	N/A	N/A	From ECOH 2010 Reassessment Report
3-01	Suite 301	Ceiling	Drywall Joint Compound	Asbestos	2014 A-002 a-f	None Detected	N/A	N/A	2014 Pinchin DSS Reassessment
3-01	Suite 301	Pipe	Uninsulated	N/A	N/A	N/A	N/A	N/A	
3-01	Suite 301	Duct	Uninsulated	N/A	N/A	N/A	N/A	N/A	



APPENDIX I REASSESSMENT SURVEY FORM

Building Address		4222 Kingston Road, Toronto, ON.			Date(s) of Current Survey:		November 20, 2023		
Building Name		Family Residence			Organization Completing Survey:		Safetech Environmental Limited		
<b>Summary Findings: All previously identified or suspect asbestos containing materials were observed to be in GOOD condition.</b>									
Location Number	Location Name	Building System	Material Observed	Potential Hazardous Material	Sample ID	Analytical Result	Quantity	Condition	Notes / Recommended Actions
3-02	Suite 302	Floor	Vinyl Floor Tiles (VFT02)	Asbestos	2014 A-001 a-c	None Detected	N/A	N/A	VFT02 - 12" x 12" cream with blue fleck. 2014 Pinchin DSS Reassessment
3-02	Suite 302	Wall	Drywall Joint Compound	Asbestos	2014 A-002 a-f	None Detected	N/A	N/A	2014 Pinchin DSS Reassessment
3-02	Suite 302	Ceiling	Texture Finish	Asbestos	2010-13085-A-09-02	None Detected	N/A	N/A	From ECOH 2010 Reassessment Report
3-02	Suite 302	Ceiling	Drywall Joint Compound	Asbestos	2014 A-002 a-f	None Detected	N/A	N/A	2014 Pinchin DSS Reassessment
3-02	Suite 302	Pipe	Uninsulated	N/A	N/A	N/A	N/A	N/A	
3-02	Suite 302	Pipe	Fibreglass	N/A	N/A	N/A	N/A	N/A	
3-02	Suite 302	Duct	Uninsulated	N/A	N/A	N/A	N/A	N/A	
3-03	Suite 303	Floor	Vinyl Floor Tiles (VFT02)	Asbestos	2014 A-001 a-c	None Detected	N/A	N/A	VFT02 - 12" x 12" cream with blue fleck. 2014 Pinchin DSS Reassessment
3-03	Suite 303	Wall	Drywall Joint Compound	Asbestos	2014 A-002 a-f	None Detected	N/A	N/A	2014 Pinchin DSS Reassessment
3-03	Suite 303	Ceiling	Texture Finish	Asbestos	2010-13085-A-09-02	None Detected	N/A	N/A	From ECOH 2010 Reassessment Report
3-03	Suite 303	Ceiling	Drywall Joint Compound	Asbestos	2014 A-002 a-f	None Detected	N/A	N/A	2014 Pinchin DSS Reassessment
3-03	Suite 303	Pipe	Uninsulated	N/A	N/A	N/A	N/A	N/A	
3-03	Suite 303	Duct	Uninsulated	N/A	N/A	N/A	N/A	N/A	
3-04	Suite 304	Floor	Vinyl Floor Tiles (VFT02)	Asbestos	2014 A-001 a-c	None Detected	N/A	N/A	VFT02 - 12" x 12" cream with blue fleck. 2014 Pinchin DSS Reassessment
3-04	Suite 304	Wall	Drywall Joint Compound	Asbestos	2014 A-002 a-f	None Detected	N/A	N/A	2014 Pinchin DSS Reassessment
3-04	Suite 304	Ceiling	Texture Finish	Asbestos	2010-13085-A-09-02	None Detected	N/A	N/A	From ECOH 2010 Reassessment Report
3-04	Suite 304	Ceiling	Drywall Joint Compound	Asbestos	2014 A-002 a-f	None Detected	N/A	N/A	2014 Pinchin DSS Reassessment
3-04	Suite 304	Pipe	Uninsulated	N/A	N/A	N/A	N/A	N/A	
3-04	Suite 304	Duct	Uninsulated	N/A	N/A	N/A	N/A	N/A	
3-05,3-06	Suites 305, 306	Floor	Vinyl Floor Tiles (VFT02)	Asbestos	2014 A-001 a-c	None Detected	N/A	N/A	VFT02 - 12" x 12" cream with blue fleck. 2014 Pinchin DSS Reassessment
3-05,3-06	Suites 305, 306	Wall	Drywall Joint Compound	Asbestos	2014 A-002 a-f	None Detected	N/A	N/A	2014 Pinchin DSS Reassessment
3-05,3-06	Suites 305, 306	Ceiling	Texture Finish	Asbestos	2010-13085-A-09-01	None Detected	N/A	N/A	From ECOH 2010 Reassessment Report
3-05,3-06	Suites 305, 306	Ceiling	Drywall Joint Compound	Asbestos	2014 A-002 a-f	None Detected	N/A	N/A	2014 Pinchin DSS Reassessment
3-05,3-06	Suites 305, 306	Pipe	Uninsulated	N/A	N/A	N/A	N/A	N/A	
3-05,3-06	Suites 305, 306	Duct	Uninsulated	N/A	N/A	N/A	N/A	N/A	
3-07	Suite 307	Floor	Vinyl Floor Tiles (VFT02)	Asbestos	2014 A-001 a-c	None Detected	N/A	N/A	VFT02 - 12" x 12" cream with blue fleck. 2014 Pinchin DSS Reassessment
3-07	Suite 307	Wall	Drywall Joint Compound	Asbestos	2014 A-002 a-f	None Detected	N/A	N/A	From ECOH 2010 Reassessment Report
3-07	Suite 307	Ceiling	Texture Finish	Asbestos	2010-13085-A-09-01	None Detected	N/A	N/A	From ECOH 2010 Reassessment Report
3-07	Suite 307	Ceiling	Drywall Joint Compound	Asbestos	2014 A-002 a-f	None Detected	N/A	N/A	From ECOH 2010 Reassessment Report. 2014 Pinchin DSS Reassessment

APPENDIX I REASSESSMENT SURVEY FORM

Building Address	4222 Kingston Road, Toronto, ON.	Date(s) of Current Survey:	November 20, 2023
Building Name	Family Residence	Organization Completing Survey:	Safetech Environmental Limited

**Summary Findings:** All previously identified or suspect asbestos containing materials were observed to be in GOOD condition.

Location Number	Location Name	Building System	Material Observed	Potential Hazardous Material	Sample ID	Analytical Result	Quantity	Condition	Notes / Recommended Actions
3-07	Suite 307	Pipe	Uninsulated	N/A	N/A	N/A	N/A	N/A	
3-07	Suite 307	Duct	Uninsulated	N/A	N/A	N/A	N/A	N/A	
3-08	Kitchen & Janitor's Closet	Floor	Vinyl Floor Tiles (VFT03)	Asbestos	2015-A0011A-C	None Detected	300	N/A	VFT03 - 12" x 12" black with white flecks
3-08	Kitchen & Janitor's Closet	Floor	Vinyl Floor Tiles (VFT04)	Asbestos	2015-A0012A-C	None Detected	300	N/A	VFT04 - 12"x12" white with black flecks
3-08	Kitchen & Janitor's Closet	Wall	Drywall Joint Compound	Asbestos	2014 A-002 a-f	None Detected	600	N/A	2014 Pinchin DSS Reassessment
3-08	Kitchen & Janitor's Closet	Ceiling	Acoustic Ceiling Tiles (ACT01)	Asbestos	2014 A003A-C	None Detected	20	N/A	ACT 01- 2'x2' small fissures and pin hole-same throughout building. 2014 Pinchin DSS
3-08	Kitchen & Janitor's Closet	Ceiling	Texture Finish	Asbestos	2010-13085-A-09-02	None Detected	N/A	N/A	From ECOH 2010 Reassessment Report
3-08	Kitchen & Janitor's Closet	Ceiling	Drywall Joint Compound	Asbestos	2014 A-002 a-f	None Detected	N/A	N/A	2014 Pinchin DSS Reassessment
3-08	Kitchen & Janitor's Closet	Pipe	Uninsulated	N/A	N/A	N/A	N/A	N/A	
3-08	Kitchen & Janitor's Closet	Duct	Uninsulated	N/A	N/A	N/A	N/A	N/A	

APPENDIX I REASSESSMENT SURVEY FORM

Building Address		4222 Kingston Road, Toronto, ON.			Date(s) of Current Survey:		November 20, 2023		
Building Name		Family Residence			Organization Completing Survey:		Safetech Environmental Limited		
<b>Summary Findings:</b> All previously identified or suspect asbestos containing materials were observed to be in GOOD condition.									
Location Number	Location Name	Building System	Material Observed	Potential Hazardous Material	Sample ID	Analytical Result	Quantity	Condition	Notes / Recommended Actions
3-09	Laundry & Janitor's Closet	Floor	Vinyl Floor Tiles (VFT07)	Asbestos	2014 A-004 a-c	None Detected	N/A	N/A	VFT07 - 12" x 12" Blue with dark blue fleck. 2014 Pinchin DSS Reassessment
3-09	Laundry & Janitor's Closet	Wall	Drywall Joint Compound	Asbestos	2014 A-002 a-f	None Detected	N/A	N/A	2014 Pinchin DSS Reassessment
3-09	Laundry & Janitor's Closet	Ceiling	Texture Finish	Asbestos	2010-1N/A85-A-09-02	None Detected	N/A	N/A	From ECOH 2010 Reassessment Report
3-09	Laundry & Janitor's Closet	Ceiling	Drywall Joint Compound	Asbestos	2014 A-002 a-f	None Detected	N/A	N/A	2014 Pinchin DSS Reassessment
3-09	Laundry & Janitor's Closet	Pipe	Uninsulated	N/A	N/A	N/A	N/A	N/A	
3-09	Laundry & Janitor's Closet	Duct	Uninsulated	N/A	N/A	N/A	N/A	N/A	
3-10	Suite 310	Floor	Vinyl Floor Tiles (VFT02)	Asbestos	2014 A-001 a-c	None Detected	N/A	N/A	VFT02, Cream with blue fleck. 2014 Pinchin DSS Reassessment
3-10	Suite 310	Wall	Drywall Joint Compound	Asbestos	2014 A-002 a-f	None Detected	N/A	N/A	2014 Pinchin DSS Reassessment
3-10	Suite 310	Ceiling	Texture Finish	Asbestos	2010-13085-A-09-01	None Detected	N/A	N/A	From ECOH 2010 Reassessment Report
3-10	Suite 310	Ceiling	Drywall Joint Compound	Asbestos	2014 A-002 a-f	None Detected	N/A	N/A	2014 Pinchin DSS Reassessment
3-10	Suite 310	Pipe	Uninsulated	N/A	N/A	N/A	N/A	N/A	
3-10	Suite 310	Duct	Uninsulated	N/A	N/A	N/A	N/A	N/A	
3-11	Suite 311	Floor	Vinyl Floor Tiles (VFT07)	Asbestos	2014 A-004 a-c	None Detected	N/A	N/A	VFT07 - 12" x 12" Blue with dark blue fleck. 2014 Pinchin DSS Reassessment
3-11	Suite 311	Wall	Drywall Joint Compound	Asbestos	2014 A-002 a-f	None Detected	N/A	N/A	2014 Pinchin DSS Reassessment
3-11	Suite 311	Ceiling	Acoustic Ceiling Tiles (ACT01)	Asbestos	2014 A003A-C	None Detected	N/A	N/A	ACT 01- 2"x2" small fissures and pin hole-same throughout building. 2014 Pinchin DSS
3-11	Suite 311	Ceiling	Texture Finish	Asbestos	2010-13085-A-09-01	None Detected	N/A	N/A	From ECOH 2010 Reassessment Report
3-11	Suite 311	Ceiling	Drywall Joint Compound	Asbestos	2014 A-002 a-f	None Detected	N/A	N/A	2014 Pinchin DSS Reassessment
3-11	Suite 311	Pipe	Uninsulated	N/A	N/A	N/A	N/A	N/A	
3-11	Suite 311	Duct	Uninsulated	N/A	N/A	N/A	N/A	N/A	
3-12	Suite 312	Floor	Vinyl Floor Tiles (VFT02)	Asbestos	2014 A-001 a-c	None Detected	N/A	N/A	VFT02 - 12" x 12" cream with blue fleck. 2014 Pinchin DSS Reassessment
3-12	Suite 312	Wall	Drywall Joint Compound	Asbestos	2014 A-002 a-f	None Detected	N/A	N/A	2014 Pinchin DSS Reassessment
3-12	Suite 312	Ceiling	Texture Finish	Asbestos	2010-13085-A-09-01	None Detected	N/A	N/A	From ECOH 2010 Reassessment Report
3-12	Suite 312	Ceiling	Drywall Joint Compound	Asbestos	2014 A-002 a-f	None Detected	N/A	N/A	2014 Pinchin DSS Reassessment
3-12	Suite 312	Pipe	Uninsulated	N/A	N/A	N/A	N/A	N/A	
3-12	Suite 312	Duct	Uninsulated	N/A	N/A	N/A	N/A	N/A	
3-13	Electrical Room	Floor	Concrete	N/A	N/A	N/A	N/A	N/A	
3-13	Electrical Room	Wall	Drywall Joint Compound	Asbestos	2014 A-002 a-f	None Detected	N/A	N/A	2014 Pinchin DSS Reassessment
3-13	Electrical Room	Ceiling	Drywall Joint Compound	Asbestos	2014 A-002 a-f	None Detected	100	N/A	2014 Pinchin DSS Reassessment
3-14	Suite 314	Floor	Vinyl Floor Tiles (VFT07)	Asbestos	2014 A-004 a-c	None Detected	N/A	N/A	VFT07 - 12" x 12" Blue with dark blue fleck. 2014 Pinchin DSS Reassessment

APPENDIX I REASSESSMENT SURVEY FORM

Building Address	4222 Kingston Road, Toronto, ON.	Date(s) of Current Survey:	November 20, 2023
Building Name	Family Residence	Organization Completing Survey:	Safetech Environmental Limited

**Summary Findings:** All previously identified or suspect asbestos containing materials were observed to be in GOOD condition.

Location Number	Location Name	Building System	Material Observed	Potential Hazardous Material	Sample ID	Analytical Result	Quantity	Condition	Notes / Recommended Actions
3-14	Suite 314	Wall	Drywall Joint Compound	Asbestos	2014 A-002 a-f	None Detected	N/A	N/A	2014 Pinchin DSS Reassessment
3-14	Suite 314	Ceiling	Texture Finish	Asbestos	2010-13085-A-09-01	None Detected	N/A	N/A	From ECOH 2010 Reassessment Report
3-14	Suite 314	Ceiling	Drywall Joint Compound	Asbestos	2014 A-002 a-f	None Detected	N/A	N/A	2014 Pinchin DSS Reassessment
3-14	Suite 314	Ceiling	Acoustic Ceiling Tiles (ACT01)	Asbestos	2014 A003A-C	None Detected	N/A	N/A	ACT 01- 2'x2' small fissures and pin hole-same throughout building. 2014 Pinchin DSS
3-14	Suite 314	Pipe	Uninsulated	N/A	N/A	N/A	N/A	N/A	
3-14	Suite 314	Duct	Uninsulated	N/A	N/A	N/A	N/A	N/A	

APPENDIX I REASSESSMENT SURVEY FORM

Building Address		4222 Kingston Road, Toronto, ON.			Date(s) of Current Survey:		November 20, 2023		
Building Name		Family Residence			Organization Completing Survey:		Safetech Environmental Limited		
<b>Summary Findings: All previously identified or suspect asbestos containing materials were observed to be in GOOD condition.</b>									
Location Number	Location Name	Building System	Material Observed	Potential Hazardous Material	Sample ID	Analytical Result	Quantity	Condition	Notes / Recommended Actions
3-15	Suite 315	Floor	Vinyl Floor Tiles (VFT)	Asbestos	2014 A-001 a-c	None Detected	N/A	N/A	2014 Pinchin DSS Reassessment
3-15	Suite 315	Wall	Drywall Joint Compound	Asbestos	2014 A-002 a-f	None Detected	N/A	N/A	2014 Pinchin DSS Reassessment
3-15	Suite 315	Ceiling	Texture Finish	Asbestos	2010-13085-A-09-01	None Detected	N/A	N/A	From ECOH 2010 Reassessment Report
3-15	Suite 315	Ceiling	Drywall Joint Compound	Asbestos	2014 A-002 a-f	None Detected	N/A	N/A	2014 Pinchin DSS Reassessment
3-15	Suite 315	Ceiling	Acoustic Ceiling Tiles (ACT01)	Asbestos	2014 A003A-C	None Detected	N/A	N/A	ACT 01- 2'x2' small fissures and pin hole-same throughout building. 2014 Pinchin DSS
3-15	Suite 315	Pipe	Uninsulated	N/A	N/A	N/A	N/A	N/A	
3-15	Suite 315	Duct	Uninsulated	N/A	N/A	N/A	N/A	N/A	
3-16 to 3-19	Suites 316-319	Floor	Vinyl Floor Tiles (VFT07)	Asbestos	2014 A-004 a-c	None Detected	N/A	N/A	VFT07 - 12" x 12" Blue with dark blue fleck. 2014 Pinchin DSS Reassessment
3-16 to 3-19	Suites 316-319	Wall	Drywall Joint Compound	Asbestos	2014 A-002 a-f	None Detected	N/A	N/A	2014 Pinchin DSS Reassessment
3-16 to 3-19	Suites 316-319	Ceiling	Texture Finish	Asbestos	2010-13085-A-09-01	None Detected	N/A	N/A	From ECOH 2010 Reassessment Report
3-16 to 3-19	Suites 316-319	Ceiling	Drywall Joint Compound	Asbestos	2014 A-002 a-f	None Detected	N/A	N/A	2014 Pinchin DSS Reassessment
3-16 to 3-19	Suites 316-319	Pipe	Uninsulated	N/A	N/A	N/A	N/A	N/A	
3-16 to 3-19	Suites 316-319	Duct	Uninsulated	N/A	N/A	N/A	N/A	N/A	
3-20	Suite 320	Floor	Vinyl Floor Tiles (VFT07)	Asbestos	2014 A-004 a-c	None Detected	N/A	N/A	VFT07 - 12" x 12" Blue with dark blue fleck. 2014 Pinchin DSS Reassessment
3-20	Suite 320	Wall	Drywall Joint Compound	Asbestos	2014 A-002 a-f	None Detected	N/A	N/A	2014 Pinchin DSS Reassessment
3-20	Suite 320	Ceiling	Acoustic Ceiling Tiles (ACT01)	Asbestos	2014 A003A-C	None Detected	N/A	N/A	ACT 01- 2'x2' small fissures and pin hole-same throughout building. 2014 Pinchin DSS
3-20	Suite 320	Ceiling	Texture Finish	Asbestos	2010-13085-A-09-02	None Detected	N/A	N/A	From ECOH 2010 Reassessment Report
3-20	Suite 320	Ceiling	Drywall Joint Compound	Asbestos	2014 A-002 a-f	None Detected	N/A	N/A	2014 Pinchin DSS Reassessment
3-20	Suite 320	Pipe	Uninsulated	N/A	N/A	N/A	N/A	N/A	
3-20	Suite 320	Duct	Uninsulated	N/A	N/A	N/A	N/A	N/A	
3-21, 3-22	Suites 321,322	Floor	Vinyl Floor Tiles (VFT07)	Asbestos	2014 A-004 a-c	None Detected	N/A	N/A	VFT07 - 12" x 12" Blue with dark blue fleck. 2014 Pinchin DSS Reassessment
3-21, 3-22	Suites 321,322	Wall	Drywall Joint Compound	Asbestos	2013-14739-ASB-01A	None Detected	N/A	N/A	Sampled during ECOH 2013 Mould Assessment
3-21, 3-22	Suites 321,322	Ceiling	Texture Finish	Asbestos	14739-ASB-07A-E	None Detected	N/A	N/A	Unit 322 Sampled during ECOH 2013 Mould Assessment
3-21, 3-22	Suites 321,322	Ceiling	Drywall Joint Compound	Asbestos	2013-14739-ASB-01A	None Detected	N/A	N/A	Sampled during ECOH 2013 Mould Assessment
3-21, 3-22	Suites 321,322	Ceiling	Acoustic Ceiling Tiles (ACT01)	Asbestos	2014 A003A-C	None Detected	N/A	N/A	ACT 01- 2'x2' small fissures and pin hole-same throughout building. 2014 Pinchin DSS
3-21, 3-22	Suites 321,322	Pipe	Uninsulated	N/A	N/A	N/A	N/A	N/A	
3-21, 3-22	Suites 321,322	Duct	Uninsulated	N/A	N/A	N/A	N/A	N/A	
3-23a.b	Stairwell	Floor	carpet	N/A	N/A	N/A	N/A	N/A	
3-23a.b	Stairwell	Wall	Concrete	N/A	N/A	N/A	N/A	N/A	

APPENDIX I REASSESSMENT SURVEY FORM

Building Address		4222 Kingston Road, Toronto, ON.			Date(s) of Current Survey:		November 20, 2023		
Building Name		Family Residence			Organization Completing Survey:		Safetech Environmental Limited		
<b>Summary Findings: All previously identified or suspect asbestos containing materials were observed to be in GOOD condition.</b>									
Location Number	Location Name	Building System	Material Observed	Potential Hazardous Material	Sample ID	Analytical Result	Quantity	Condition	Notes / Recommended Actions
3-23a.b	Stairwell	Ceiling	Texture Finish	Asbestos	2010-13085-A-09-01	None Detected	N/A	N/A	From ECOH 2010 Reassessment Report
3-24	Hallway	Floor	carpet	N/A	N/A	N/A	N/A	N/A	
3-24	Hallway	Wall	Concrete	N/A	N/A	N/A	N/A	N/A	
3-24	Hallway	Ceiling	Texture Finish	Asbestos	N/A	None Detected	N/A	N/A	From ECOH 2010 Reassessment Report
<b>Surveyor's Field Notes</b>									

**Appendix II – Results of Bulk Sample Analysis**

---



# EMSL Canada Inc.

2756 Slough Street Mississauga, ON L4T 1G3  
Phone/Fax: (289) 997-4602 / (289) 997-4607  
<http://www.EMSL.com> / [torontolab@emsl.com](mailto:torontolab@emsl.com)

EMSL Canada Order 552318325  
Customer ID: 55SELI62  
Customer PO: 1-3230268  
Project ID:

**Attn:** Jason King  
Safetech Environmental Limited  
3045 Southcreek Road  
Unit 14  
Mississauga, ON L4X 2X7  
**Phone:** (905) 624-2722  
**Fax:** (905) 624-4306  
**Collected:** 11/20/2023  
**Received:** 11/22/2023  
**Analyzed:** 11/27/2023  
**Proj:** Family Residence , 4222 Kingston Rd / 1-3230268

## Summary Test Report for Asbestos Analysis of Bulk Materials for Ontario Regulation 278/05

**Client Sample ID:** A **Lab Sample ID:** 552318325-0001

**Sample Description:** Drywall Joint Compound (Ceiling)/Laundry, Storage Room (1-21)

TEST	Analyzed Date	Color	Non-Asbestos		Asbestos	Comment
			Fibrous	Non-Fibrous		
PLM	11/27/2023	White	0.0%	100.0%	None Detected	

**Client Sample ID:** B **Lab Sample ID:** 552318325-0002

**Sample Description:** Drywall Joint Compound (Ceiling)/Laundry, Storage Room (1-21)

TEST	Analyzed Date	Color	Non-Asbestos		Asbestos	Comment
			Fibrous	Non-Fibrous		
PLM	11/27/2023	White	0.0%	100.0%	None Detected	

**Client Sample ID:** C **Lab Sample ID:** 552318325-0003

**Sample Description:** Drywall Joint Compound (Ceiling)/Laundry, Storage Room (1-21)

TEST	Analyzed Date	Color	Non-Asbestos		Asbestos	Comment
			Fibrous	Non-Fibrous		
PLM	11/27/2023	White	0.0%	100.0%	None Detected	

**Analyst(s):** \_\_\_\_\_

Hassan Moez PLM (2)  
Nickesh Mistry PLM (1)

**Reviewed and approved by:**

Matthew Davis or other approved signatory  
or Other Approved Signatory

None Detected = <0.1%. EMSL maintains liability limited to cost of analysis. Interpretation and use of test results are the responsibility of the client. This is a summary report; official reports are available on LabConnect or upon request and relates only to the samples reported above, and may not be reproduced, except in full, without written approval by EMSL. EMSL bears no responsibility for sample collection activities or analytical method limitations. The report reflects the samples as received. Results are generated from the field sampling data (sampling volumes and areas, locations, etc.) provided by the client on the Chain of Custody. Samples are within quality control criteria and met method specifications unless otherwise noted. The above analyses were performed in general compliance with Appendix E to Subpart E of 40 CFR (previously EPA 600/M4-82-020 "Interim Method") but augmented with procedures outlined in the 1993 ("final") version of the method. This report must not be used by the client to claim product certification, approval, or endorsement by NVLAP, NIST or any agency of the federal government. Non-friable organically bound materials present a problem matrix and therefore EMSL recommends gravimetric reduction prior to analysis. Unless requested by the client, building materials manufactured with multiple layers (i.e. linoleum, wallboard, etc.) are reported as a single sample. Estimation of uncertainty is available on request.

Samples analyzed by EMSL Canada Inc. Mississauga, ON NVLAP Lab Code 200877-0

Initial report from: 11/27/2023 14:06:14





**EMSL Canada Inc.**

2756 Slough Street, Mississauga, ON L4T 1G3

Phone/Fax: (289) 997-4602 / (289) 997-4607

<http://www.EMSL.com>

[torontolab@emsl.com](mailto:torontolab@emsl.com)

EMSL Canada Or 552318300  
CustomerID: 55SELI62  
CustomerPO: 1-3230268  
ProjectID:

Attn: **Jason King**  
**Safetech Environmental Limited**  
**3045 Southcreek Road**  
**Unit 14**  
**Mississauga, ON L4X 2X7**

Phone: (905) 624-2722  
Fax: (905) 624-4306  
Received: 11/22/2023 05:30 PM  
Collected: 11/20/2023

Project: **Family Residence, 4222 KingstonRd / 1-3230268**

**Test Report: Lead in Paint Chips by Flame AAS (SW 846 3050B/7000B)\***

<i>Client SampleDescription</i>	<i>Collected</i>	<i>Analyzed</i>	<i>Weight</i>	<i>RDL</i>	<i>Lead Concentration</i>
L-01 552318300-0001	11/20/2023	11/23/2023	0.2461 g	0.0081 % wt	<0.0081 % wt
Site: Laundry, Storage Room - White Paint on Drywall Ceiling					

Rowena Fanto, Lead Supervisor  
or other approved signatory

EMSL maintains liability limited to cost of analysis. Interpretation and use of test results are the responsibility of the client. This report relates only to the samples reported above, and may not be reproduced, except in full, without written approval by EMSL. EMSL bears no responsibility for sample collection activities or analytical method limitations. The report reflects the samples as received. Results are generated from the field sampling data (sampling volumes and areas, locations, etc.) provided by the client on the Chain of Custody. Samples are within quality control criteria and met method specifications unless otherwise noted.

\* Analysis following Lead in Paint by EMSL SOP/Determination of Environmental Lead by FLAA. Reporting limit is 0.008% wt based on the minimum sample weight per our SOP. "<" (less than) result signifies the analyte was not detected at or above the reporting limit. Measurement of uncertainty is available upon request. Definitions of modifications are available upon request.

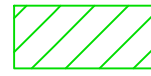
Samples analyzed by EMSL Canada Inc. Mississauga, ON AIHA LAP, LLC-ELLAP Accredited #196142

Initial report from 11/27/2023 09:23:51

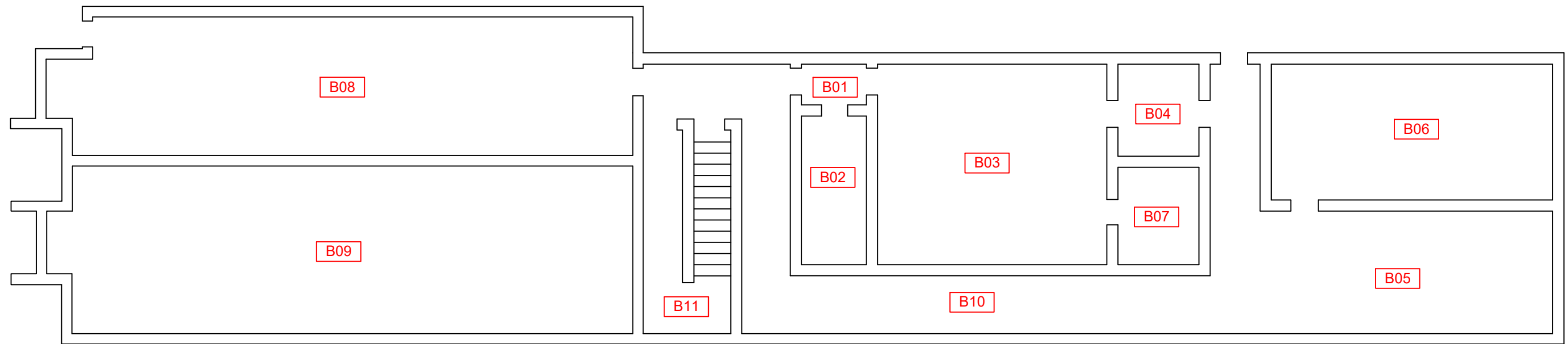
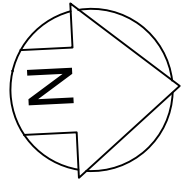
**Appendix III – Drawings**

---

# LEGEND

 Assumed/Confirmed ACM

 Location Number



1) THIS FLOOR PLAN MUST BE READ IN CONJUNCTION WITH THE DESIGNATED SUBSTANCE AND HAZARDOUS MATERIALS ASSESSMENT REPORT.  
 2) NOT ALL ASBESTOS-CONTAINING MATERIALS ARE INDICATED IN THE FLOOR PLAN. REFER TO THE DESIGNATED SUBSTANCE AND HAZARDOUS MATERIALS REPORT FOR FURTHER DETAILS.  
 3) REMOVAL OR DISTURBANCE OF ASBESTOS-CONTAINING BUILDING MATERIALS MUST BE CONDUCTED IN ACCORDANCE WITH ONTARIO REGULATION 278/05 "DESIGNATED SUBSTANCE-ASBESTOS ON CONSTRUCTION PROJECTS AND IN BUILDINGS AND REPAIR OPERATIONS".

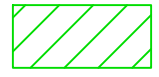
BASEMENT  
 CoT SHELTERS - 2023 ANNUAL REASSESSMENTS  
 4222 KINGSTON ROAD

DRAWING NO.  
**DS-1**  
 DATE: NOVEMBER 2023  
 SAFETECH PROJECTNO.  
 1-3230268

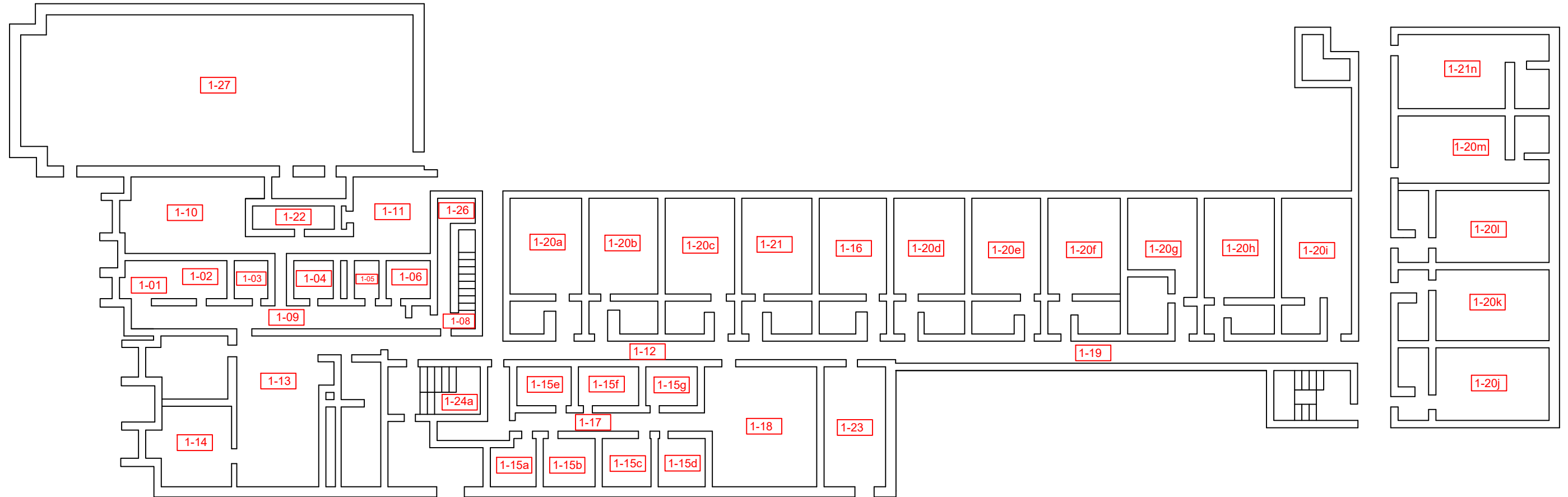
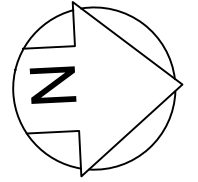


**safetech**  
 ENVIRONMENTAL LTD.  
 3045 SOUTHCREEK ROAD, UNIT 14  
 MISSISSAUGA, ONTARIO  
 L4X 2X7

# LEGEND

 Assumed/Confirmed ACM

 Location Number



1) THIS FLOOR PLAN MUST BE READ IN CONJUNCTION WITH THE DESIGNATED SUBSTANCE AND HAZARDOUS MATERIALS ASSESSMENT REPORT.  
 2) NOT ALL ASBESTOS-CONTAINING MATERIALS ARE INDICATED IN THE FLOOR PLAN. REFER TO THE DESIGNATED SUBSTANCE AND HAZARDOUS MATERIALS REPORT FOR FURTHER DETAILS.  
 3) REMOVAL OR DISTURBANCE OF ASBESTOS-CONTAINING BUILDING MATERIALS MUST BE CONDUCTED IN ACCORDANCE WITH ONTARIO REGULATION 278/05 "DESIGNATED SUBSTANCE-ASBESTOS ON CONSTRUCTION PROJECTS AND IN BUILDINGS AND REPAIR OPERATIONS".


1ST FLOOR  
 CoT SHELTERS - 2023 ANNUAL REASSESSMENTS  
 4222 KINGSTON ROAD

DRAWING NO.  
**DS-2**  
 DATE: NOVEMBER 2023  
 SAFETECH PROJECTNO.  
 1-3230268

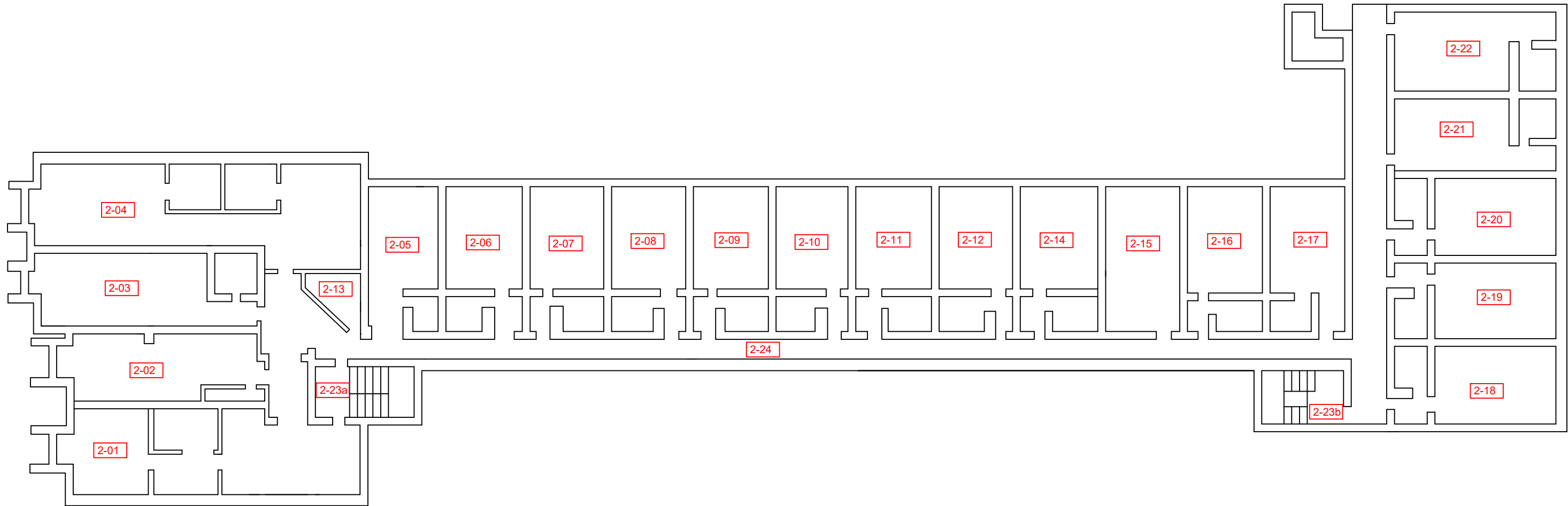
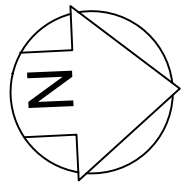


**safetech**  
 ENVIRONMENTAL LTD.  
 3045 SOUTHCREEK ROAD, UNIT 14  
 MISSISSAUGA, ONTARIO  
 L4X 2X7

# LEGEND

 Assumed/Confirmed ACM

 Location Number



1) THIS FLOOR PLAN MUST BE READ IN CONJUNCTION WITH THE DESIGNATED SUBSTANCE AND HAZARDOUS MATERIALS ASSESSMENT REPORT.  
 2) NOT ALL ASBESTOS-CONTAINING MATERIALS ARE INDICATED IN THE FLOOR PLAN. REFER TO THE DESIGNATED SUBSTANCE AND HAZARDOUS MATERIALS REPORT FOR FURTHER DETAILS.  
 3) REMOVAL OR DISTURBANCE OF ASBESTOS-CONTAINING BUILDING MATERIALS MUST BE CONDUCTED IN ACCORDANCE WITH ONTARIO REGULATION 278/05 "DESIGNATED SUBSTANCE-ASBESTOS ON CONSTRUCTION PROJECTS AND IN BUILDINGS AND REPAIR OPERATIONS".

2ND FLOOR  
 CoT SHELTERS - 2023 ANNUAL REASSESSMENTS  
 4222 KINGSTON ROAD

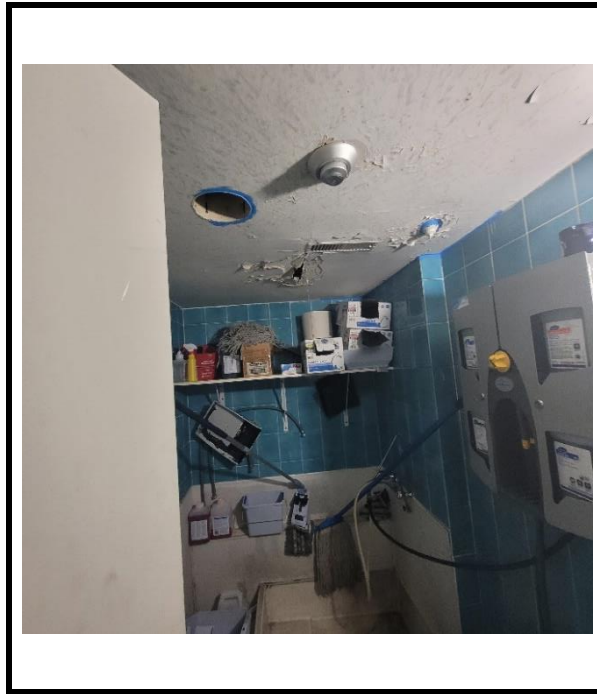
DRAWING NO.  
**DS-3**  
 DATE: NOVEMBER 2023  
 SAFETECH PROJECTNO.  
 1-3230268



**safetech**  
 ENVIRONMENTAL LTD.  
 3045 SOUTHCREEK ROAD, UNIT 14  
 MISSISSAUGA, ONTARIO  
 L4X 2X7

**Appendix IV – Site Photographs**

---



Photograph I

---

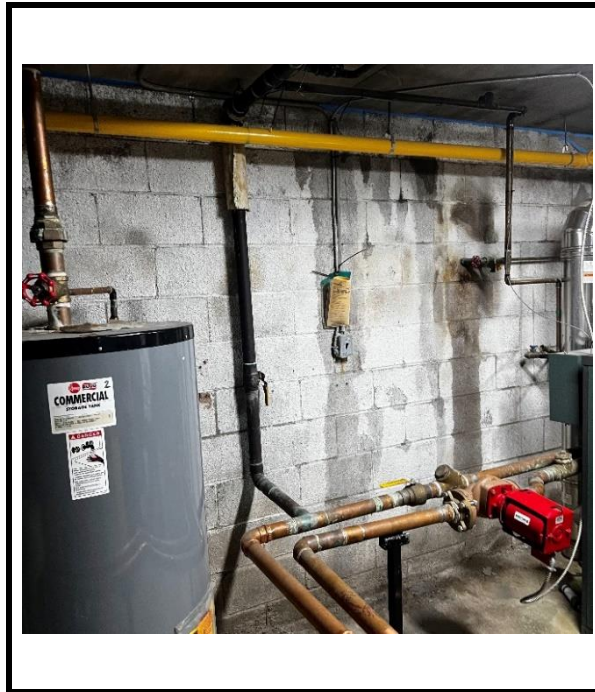
View of water-damaged drywall ceiling within the Laundry's Storage Room (1-21).



Photograph II

---

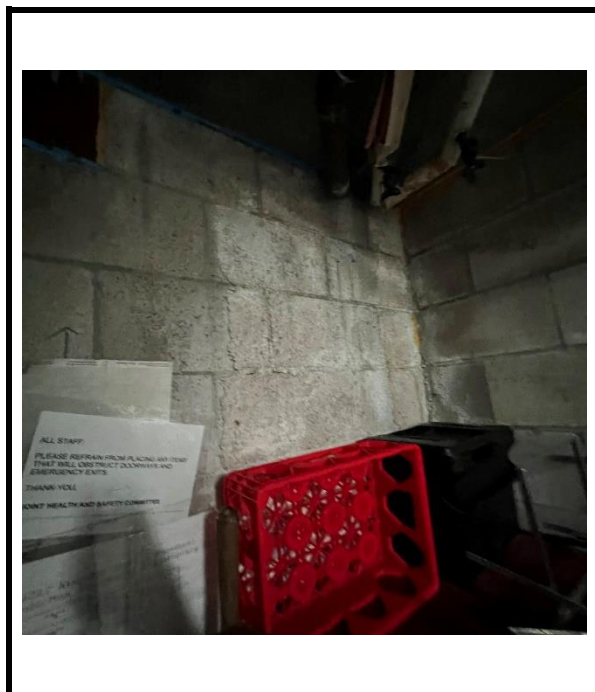
View of water-damaged drywall ceiling within the Laundry's Storage Room (1-21).



Photograph III

---

View of water-damaged concrete block wall within the Boiler Room (B-06).



Photograph IV

---

View of water-damaged concrete block wall within the Basement Hallway (B-01).



**Appendix V – Corrective Actions Inspection Report**

---



**2023 REASSESSMENT PROGRAM  
CORRECTIVE ACTIONS REPORTING  
FORM**

**Consulting Firm:** Safetech Environmental Limited  
**Reported By:** Jason King  
**Date Reported:** November 20, 2023  
**City Division / Client:** City of Toronto  
**Building Address:** 4222 Kingston Rd  
**Building Name:** Family Residence

**SEND COMPLETED FORM A.S.A.P. BY E-MAIL TO SARA REID: [sara.reid@toronto.ca](mailto:sara.reid@toronto.ca)**

<b>Description of Recommended Work (i.e., quantity of damage, type of damaged material, repair / removal operation)</b>	<b>Location(s) of Work (i.e., location number, location name)</b>
Approximately 50 SF of water-damaged Drywall Ceiling Remove following Level 1 Mould Remediation Procedures.	Laundry, Slop Sink Room (1-21)
Approximately 200 SF of water-damaged concrete block wall Structural Repair	Boiler Room B-06, Exit Door B-05, and Hallway B-01

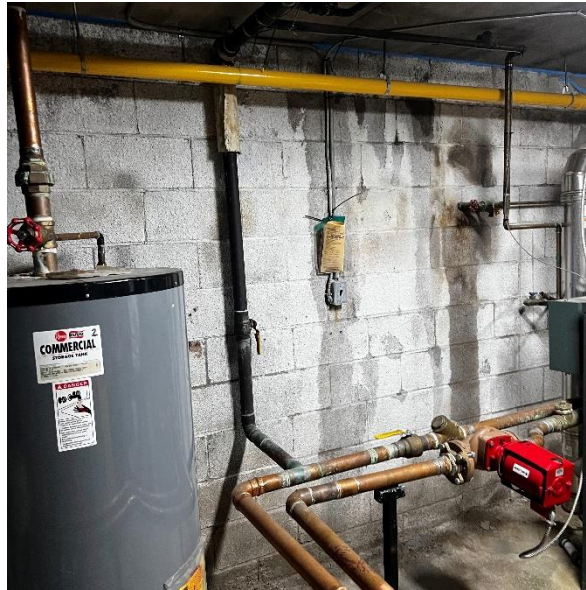
**Recommendations (if any):**

**COMMENTS / PHOTOGRAPHS:**



**Photos 1, 2:** View of water-damaged drywall ceiling.

**2023 REASSESSMENT PROGRAM  
CORRECTIVE ACTIONS REPORTING  
FORM**



**Photos 3, 4:** View of water-damaged concrete block wall.