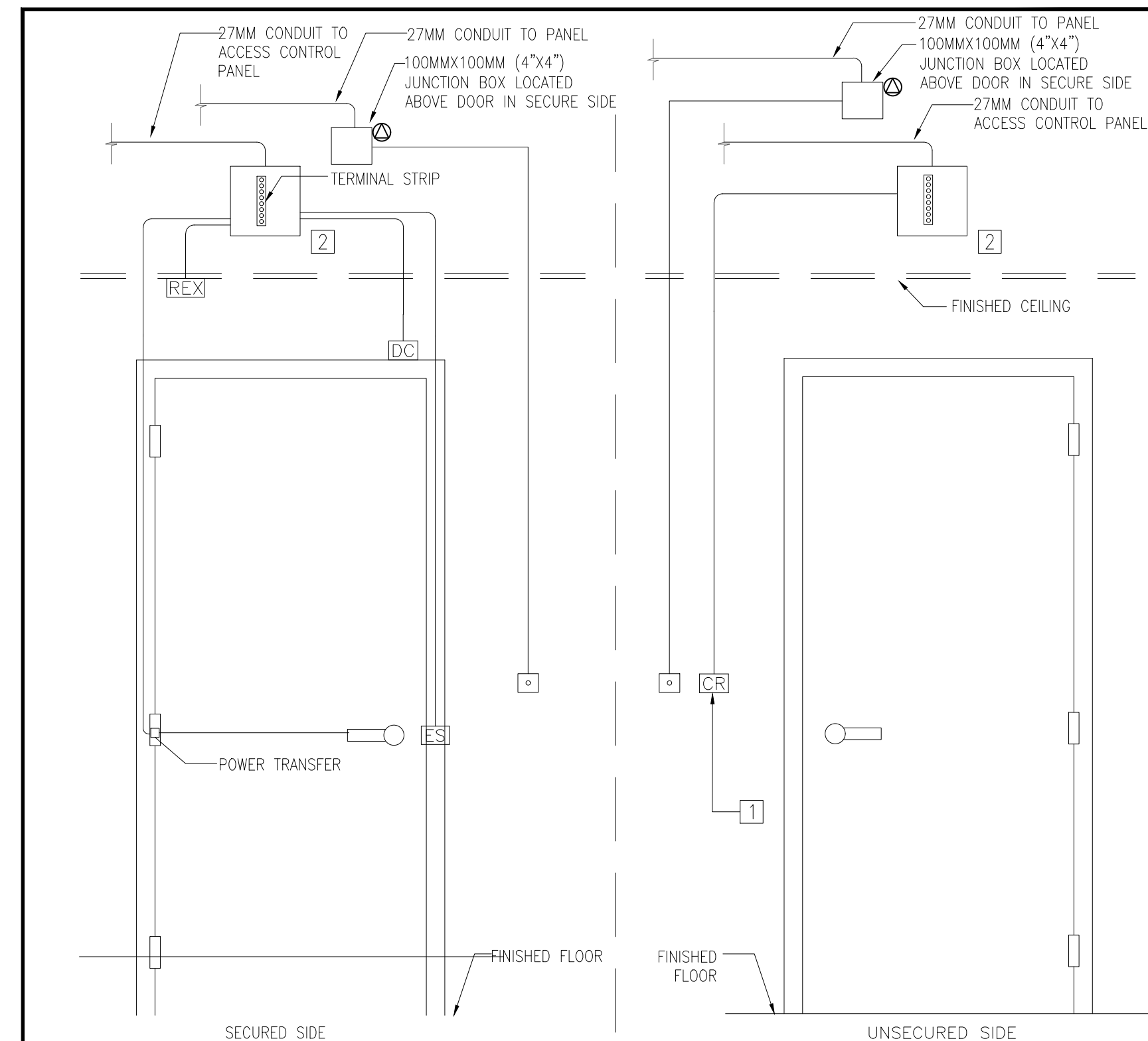


1 POWER/COMMUNICATION WALL OUTLET DETAIL
E100 SCALE: NTS



DETAIL NOTES:

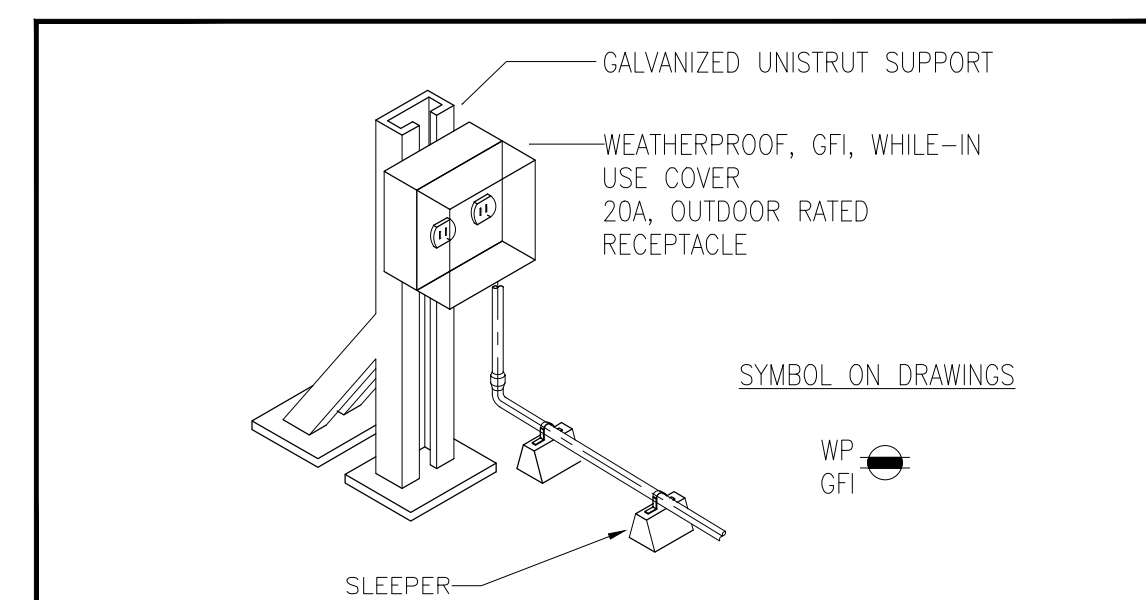
- 100MM X 50MM BOX FOR DEVICE.
- 305MM X 305MM JUNCTION BOX ON SECURED SIDE OF DOOR.

SYMBOL ON DRAWINGS: [CR] [ES] [DC] [REX] [G]

GENERAL NOTES:

- REFER TO FLOOR PLAN, SECURITY DRAWING AND DOOR HARDWARE SCHEDULE FOR ADDITIONAL DETAILS.
- COORDINATE EXACT LOCATIONS OF DEVICES ON SITE WITH SECURITY AND DOOR HARDWARE CONTRACTOR.
- ALL TERMINAL STRIPS SHALL BE PROVIDED AND INSTALLED BY THE SECURITY CONTRACTOR.
- THIS DIAGRAM SHALL BE READ IN CONJUNCTION WITH THE SECURITY DRAWING, DOOR HARDWARE SCHEDULE.
- ALL WIRING SHALL BE INSTALLED IN CONDUITS. ALL CONDUIT SHALL BE 21mm UNLESS OTHERWISE NOTED.
- ELECTRICAL CONTRACTOR SHALL PROVIDE ALL REQUIRED JUNCTION BOX, BACK BOX AND CONDUIT AS INDICATED AND COORDINATE WITH SECURITY CONTRACTOR ON SITE FOR ALL REQUIREMENT. ELECTRONIC SAFETY AND SECURITY CONTRACTOR SHALL PROVIDE ALL CONTROL WIRING FROM THE ACCESS CONTROL SYSTEM CONTROLLER TO TERMINAL STRIP LOCATED ABOVE DOOR.

2 SECURITY DOOR ROUGH-IN DETAIL
E100 SCALE: NTS



3 ROOF MOUNTED SERVICE RECEPTACLE
E-100 SCALE: NTS

GENERAL NOTES:

- CONTRACTOR SHALL CONDUCT A SITE REVIEW PRIOR TO PRICING TO BECOME FAMILIAR WITH THE SITE CONDITIONS. VERIFY ALL LOCATIONS, SIZES, AND CONNECTIONS ON SITE AND REPORT ANY DISCREPANCIES TO THE CONSULTANT WITH PROPOSED RESOLUTION AND OBTAIN CONSULTANT'S APPROVAL.
- ALL EXISTING SERVICES THAT ARE NOT SHOWN ON THE DRAWINGS AND ARE EXPOSED DURING DEMOLITION/CONSTRUCTION SHALL BE VERIFIED BY THE CONTRACTOR AS TO THE SOURCE AND ROUTING AND SHALL BE REPORTED TO THE CONSULTANT WITH PROPOSED RESOLUTIONS.
- ALL BASE BUILDING SERVICES NOT IN SCOPE ARE TO REMAIN ON AND INTACT DURING THE DURATION OF WORK. WIRING, CONDUIT, AND EQUIPMENT REQUIRED TO MAINTAIN SERVICE SHALL BE TEMPORARILY SUPPORTED, RE-ROUTED, SERVICED, OR RELOCATED AS REQUIRED. ANY LOSS OF SERVICES TO EXISTING BASE BUILDING OUTSIDE OF SCOPE OF WORK SHALL BE COORDINATED WITH FACILITY MANAGEMENT.
- ALL EQUIPMENT AND DEVICES SHOWN ARE APPROXIMATE LOCATIONS. EXACT LOCATIONS AND MOUNTING HEIGHTS SHALL BE COORDINATED ON SITE WITH OTHER TRADES AND CONSULTANT.
- SEAL AND FIRESTOP ALL WALL, FLOOR, AND ROOF PENETRATIONS THROUGH FIRE RATED ASSEMBLIES.
- CONDUCT SITE TESTING OF ALL EMERGENCY LIGHTING IN THE AFTER HOURS. PROVIDE LETTER CONFIRMING ALL EMERGENCY LIGHTING AUTOMATICALLY COMES ON DURING POWER LOSS. INCLUDE ALL COSTS.
- MAKE GOOD ALL SURFACES, INCLUDING CORE HOLES FROM DEMOLISHED OR RELOCATED EQUIPMENT/DEVICES, AFTER COMPLETION OF WORK.
- ALL MATERIALS SHALL BE DISPOSED IN ACCORDANCE WITH ALL APPLICABLE REGULATIONS!
- PROVIDE LABELS FOR ALL RECEPTACLES TO IDENTIFY THE CIRCUIT FEEDING THE RECEPTACLE.
- PROVIDE UPDATED, TYPE-WRITTEN PANEL DIRECTORIES AFTER COMPLETION OF WORK.
- REFER TO ARCHITECT'S DRAWINGS FOR MOUNTING HEIGHTS, DEVICE LOCATION AND COVER PLATE COLOURS.
- ALL FIRE ALARM WORK SHALL BE COMPLETE BY BASE BUILDING FIRE ALARM CONTRACTOR/VENDOR.
- ALLOW FOR SCANNING, X-RAY, AND CORING AS REQUIRED BY THIS PROJECT.
- CUT, PATCH AND PAINT EXISTING DRYWALL CEILINGS AS REQUIRED TO SUIT ALL WORK.
- REFER TO MECHANICAL DRAWING FOR THE DEMOLITION PHASING AND PROJECT PHASING WORK REQUIREMENT. ALL WORK TO BE COORDINATED WITH MECHANICAL CONTRACTOR PRIOR.

DEMOLITION NOTES:

- THE CONTRACTOR SHALL DEMOLISH ALL ELECTRICAL SYSTEMS WITHIN THE AREA OF THE BUILDING BEING RENOVATED AS SHOWN AND WHERE REQUIRED TO SUPPORT THE INSTALLATION OF NEW ELECTRICAL WORK.
- IT IS THE RESPONSIBILITY OF THE ELECTRICAL CONTRACTOR TO REMOVE ALL EQUIPMENT FROM THE SITE.
- REMOVE ALL LUMINAIRES, OUTLETS, PANELS, DEVICES, ETC. AS SHOWN ON FLOOR PLAN. ALLOW FOR THE REMOVAL OF AN ADDITIONAL 10 OUTLETS (INCLUSIVE OF RECEPTACLE OUTLETS, AND TELE/DATA OUTLETS), 5 LUMINAIRES AND CONDUIT/WIRING NOT SHOWN ON DRAWINGS THAT MAY BE LOCATED IN WALLS OR CEILINGS THAT WILL BE DEMOLISHED. CONTRACTOR SHALL VERIFY EXACT QUANTITIES ON SITE.
- CLEAN OUT AND DISPOSE OF ALL ELECTRICAL WIRING IN CONDUIT MADE REDUNDANT WITH THIS DEMOLITION.
- ANY EXISTING DEVICE TO BE REUSED AND/OR RELOCATED SHALL BE REMOVED, REFURBISHED AND RE-INSTALLED. IF RELOCATED THE ELECTRICAL CONTRACTOR SHALL EXTEND EXISTING CONDUIT AND WIRE TO SUIT.
- ELECTRICAL EQUIPMENT OR DEVICES THAT ARE TO BE REUSED, OR TO REMAIN SHALL BE PROTECTED SO THAT ARE NOT DAMAGED OR DISTURBED DURING DEMOLITION OF EXISTING WALLS AND/OR CEILING.
- WHERE EXISTING FLOOR MONUMENTS ARE SHOWN TO BE REMOVED, THIS ELECTRICAL CONTRACTOR SHALL REMOVE ALL ASSOCIATED CONDUIT AND WIRING RUNNING IN CEILING SPACE OF FLOORS BELOW.
- THE ELECTRICAL CONTRACTOR SHALL MAINTAIN CONTINUITY FOR EXISTING SERVICES WHICH PASS THROUGH THE AREA BUT WHICH FEED ITEMS NOT LOCATED IN THE RENOVATED AREA.
- ALL ELECTRICAL EQUIPMENT AND DEVICES REMOVED SHALL HAVE ALL ASSOCIATED CONDUIT AND WIRING REMOVED AND CUT BACK TO MAIN SOURCE AND MADE SAFE.
- FIRESTOP & REPAIR ALL OPENINGS AS THE RESULT OF CONDUIT/CABLE DEMOLITION.

LUMINAIRE SCHEDULE

TYPE	VOLTAGE	LAMP TYPE			DESCRIPTION
		W	CT	CRI	
A	120V	-	4,000K	-	SURFACE MOUNTED 4 FT WRAPAROUND FIXTURE COMPLETE WITH TWO LED T8 LAMPS SKYLITE XTLED, CAT.#208FR232X1LN18W40
B	120V	-	4,000K	-	NEW 4 INCH RECESS LED POT LIGHTS, GREEN CREATIVE, CAT.#_SPFTR4-LES-90-40-MD-KD1010UNV-S0347-ADR4-CC FIELD SELECT LUMEN OUTPUT OF FIXTURE TO BE 700. ALLOW FOR ONE ADDITIONAL FIELD LUMEN RE-SELECTION.
[G]	120/347	2.5			GREEN RUNNING MAN EXIT SIGN LUMACELL CAT. #LA-3-W-U

NOTES:
1. PROVIDE ALL REQUIRED COMPONENT FOR THE FULL INSTALLATION OF EACH FIXTURE.

FIRE ALARM LEGEND

SYMBOL	DESCRIPTION
[MPS]	MANUAL PULL STATION
[H]	HEAT DETECTOR
[S]	SMOKE DETECTOR
[H]	FIRE ALARM HANDSET
[S]	FIRE ALARM SPEAKER
[S]	FIRE ALARM SPEAKER & STORBE
[B]	FIRE ALARM BELL
[H]	FIRE ALARM HORN
[H]	FIRE ALARM HORN & STROBE
[FA]	FIRE ALARM CONTROL PANEL
[FAA]	FIRE ALARM REMOTE ANNUNCIATOR

SECURITY LEGEND

SYMBOL	DESCRIPTION
[CR]	CARD READER
[ES]	ELECTRIC STRIKE
[DC]	DOOR CONTACT
[REX]	REQUEST TO EXIT
[P]	PUSH BUTTON
[DA]	DOOR ALARM
[MAG]	MAGLOCK ROUGH-IN COMPLETE WITH FIRE ALARM TIE IN
[MD]	MOTION DETECTOR
[G]	GLASS BREAK
[C]	CAMERA PROVIDE 4\"/>
[IKP]	INTRUSION KEY PAD

SINGLE LINE DIAGRAM

SYMBOL	DESCRIPTION
[B]	BREAKER
[F]	FUSED SWITCH
[U]	UNFUSED SWITCH
[T]	TRANSFORMER
[G]	GENERATOR
[ATS]	AUTOMATIC TRANSFER SWITCH
[M]	METER
[H.O.A.]	H.O.A. CONTACTOR
[D]	DISCONNECT SWITCH

DRAWING LIST

DRAWING NO.	DRAWING NAME
E100	DRAWING LIST, DRAWING LEGEND & GENERAL NOTES
E200	GROUND FLOOR KEY PLAN
E201	PARTIAL GROUND FLOOR LIGHTING, POWER & SYSTEMS DEMOLITION & MODIFICATION PLAN
E202	GROUND FLOOR MECHANICAL ROOM POWER DEMOLITION & MODIFICATION PLAN
E203	GROUND & 2ND FLOOR LIGHTING DEMOLITION PLAN
E204	2ND FLOOR POWER MODIFICATION PLAN
E301	PARTIAL ROOF - NORTH POWER DEMOLITION & MODIFICATION PLAN
E302	PARTIAL ROOF - EAST POWER DEMOLITION PLAN
E303	PARTIAL ROOF - EAST POWER MODIFICATION PLAN

LIGHTING LEGEND

SYMBOL	DESCRIPTION
[S]	SINGLE POLE TOGGLE SWITCH
[3S]	3-WAY SINGLE POLE TOGGLE SWITCH
[L]	LOW VOLTAGE LIGHT SWITCH
[D]	DIMMER SWITCH
[M]	MOTOR RATED SWITCH COMPLETE WITH PILOT LIGHT
[OS]	WALL MOUNTED OCCUPANCY SENSOR
[CS]	CEILING MOUNTED OCCUPANCY SENSOR
[R]	RECESSED OR SURFACE MOUNTED LUMINAIRE
[RE]	RECESSED OR SURFACE MOUNTED LUMINAIRE ON EMERGENCY CIRCUIT
[R]	RECESSED OR SURFACE MOUNTED LUMINAIRE
[W]	WALL MOUNTED LUMINAIRE ON EMERGENCY CIRCUIT
[C]	CEILING MOUNTED EXIT LIGHT - ARROW DENOTES DIRECTION OF EXIT
[C]	WALL MOUNTED EXIT LIGHT - ARROW DENOTES DIRECTION OF EXIT
[C]	EXIT LIGHT COMBO WITH REMOTE HEADS
[C]	CEILING MOUNTED EMERGENCY REMOTE HEADS
[C]	WALL MOUNTED EMERGENCY REMOTE HEADS
[C]	WALL MOUNTED EMERGENCY BATTERY UNIT C/W REMOTE HEADS

POWER & SYSTEM LEGEND

SYMBOL	DESCRIPTION
[D]	DUPLEX RECEPTACLE 120V-1PH 15A
[D]	DUPLEX RECEPTACLE 120V-1PH 15A C/W USB CHARGER
[D]	DUPLEX RECEPTACLE 120V-1PH 20A
[D]	DUPLEX RECEPTACLE 120V-1PH 20A ABOVE COUNTER
[D]	DUPLEX RECEPTACLE 120V-1PH 15A ABOVE COUNTER
[D]	QUAD RECEPTACLE 120V-1PH 15A
[D]	SPECIAL RECEPTACLE, AS INDICATED ON THE DRAWINGS
[D]	DIRECT POWER CONNECTION
[C]	CONNECTION TO MOTOR
[D]	DISCONNECT SWITCH
[C]	HAND-OFF-AUTO CONTACTOR C/W PILOT LIGHT
[D]	DATA/NETWORK OUTLET
[D]	TELEPHONE OUTLET
[D]	TV - HDMI OUTLET
[D]	WIREMOLD RACEWAY C/W DATA OUTLET & RECEPTACLE.
[D]	CONNECTION TO SYSTEM FURNITURE, LETTER DENOTES LOCATION W=WALL, FL=FLOOR, PAC= PAC POLE, WM = WIREMOLD
[D]	SURFACE MOUNTED ELECTRICAL PANEL
[D]	RECESS MOUNTED ELECTRICAL PANEL
[D]	FLOOR BOX
[D]	GROUND BUS BAR
[D]	TRANSFORMER

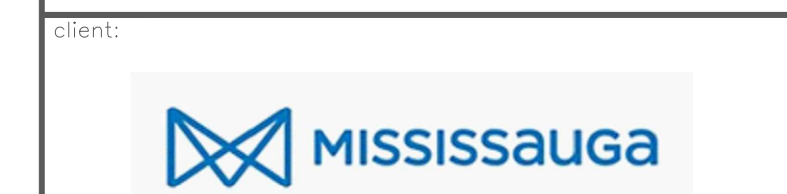
ABBREVIATIONS

A	AMPS
AFF	ABOVE FINISHED FLOOR
A/F	FUSE RATING (AMPS)
BU	BATTERY UNIT
C	CONDUIT
CL	CEILING
DW	DISH WASHER
EF	EXHAUST FAN
EM	EMERGENCY CIRCUIT
EX	EXISTING
F	FRIDGE
FL	FLOOR MOUNTED
GF1	GROUND FAULT INTERRUPTER
KW	KILOWATTS
ER/RP	EXISTING DEVICE TO BE REMOVED AND REINSTALLED AT THE SAME LOCATION
N	NEW
R	REMOVE
RL	EXISTING DEVICE AT THE RELOCATED LOCATION
ER	EXISTING DEVICE TO BE REMOVED AND RELOCATED
TYP	TYPICAL
UPS	UNINTERRUPTED POWER SUPPLY
V	VOLTS
VFD	VARIABLE FREQUENCY DRIVE
WP	WEATHERPROOF
WAP	WIRELESS ACCESS POINT

DATE REVISION

#	DATE	REVISION
4	JULY.05.24	ISSUED FOR TENDER
3	JUN.21.24	ISSUED FOR PRE-TENDER REVIEW
2	MAY.15.24	ISSUED FOR PERMIT
1	JAN.29.24	ISSUED FOR 60% REVIEW
#	DATE	ISSUED

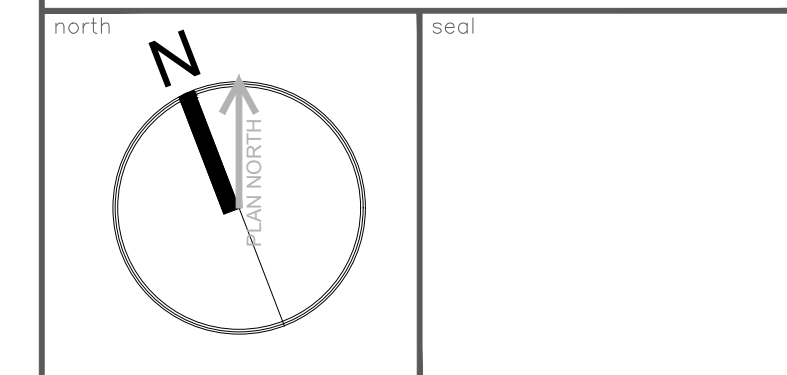
THE ARCHITECT IS NOT RESPONSIBLE FOR THE ACCURACY OF SURVEY, STRUCTURAL, MECHANICAL, ELECTRICAL, ETC. ENGINEERING INFORMATION SHOWN ON THE DRAWING. REFER TO THE APPROPRIATE ENGINEERING DRAWINGS BEFORE PROCEEDING WITH WORK.
CONTRACTOR SHALL CHECK ALL DIMENSIONS ON THE WORK AND REPORT ANY DISCREPANCY TO THE ARCHITECT BEFORE PROCEEDING. CONSTRUCTION MUST CONFORM TO ALL APPLICABLE CODES AND REQUIREMENTS OF AUTHORITIES HAVING JURISDICTION.
THIS DRAWING IS NOT TO BE SCALED.
THIS DRAWING IS NOT TO BE USED FOR CONSTRUCTION UNLESS SIGNED BY THE ARCHITECT.
ISSUED FOR CONSTRUCTION
SIGNATURE _____
DATE _____



client project no.

project:
MAVIS S.MECH. & ROOF RENEWAL
CITY OF MISSISSAUGA
3185 MAVID RD, MISSISSAUGA, ON L5C 1T7

Electrical Consultant:

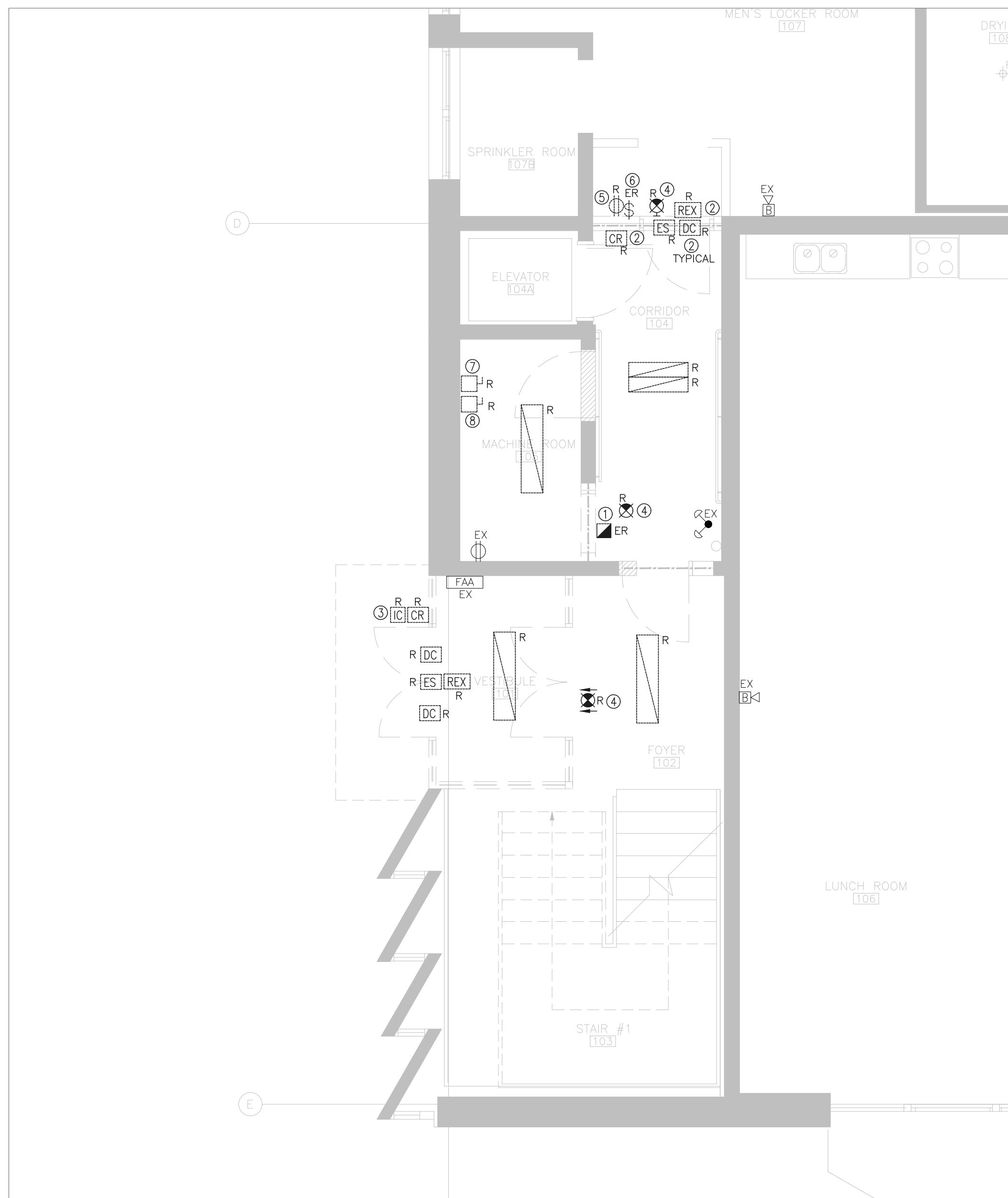


pda Paul Didur Architect Inc.
BCDN No. 2033
222 Islington Ave., Suite 260
Toronto, Ontario, M8V 3W7
E-mail: pda@pdaarchinc.com W: www.pdaarchinc.com
T-416 928 1041 F-416 928 1051

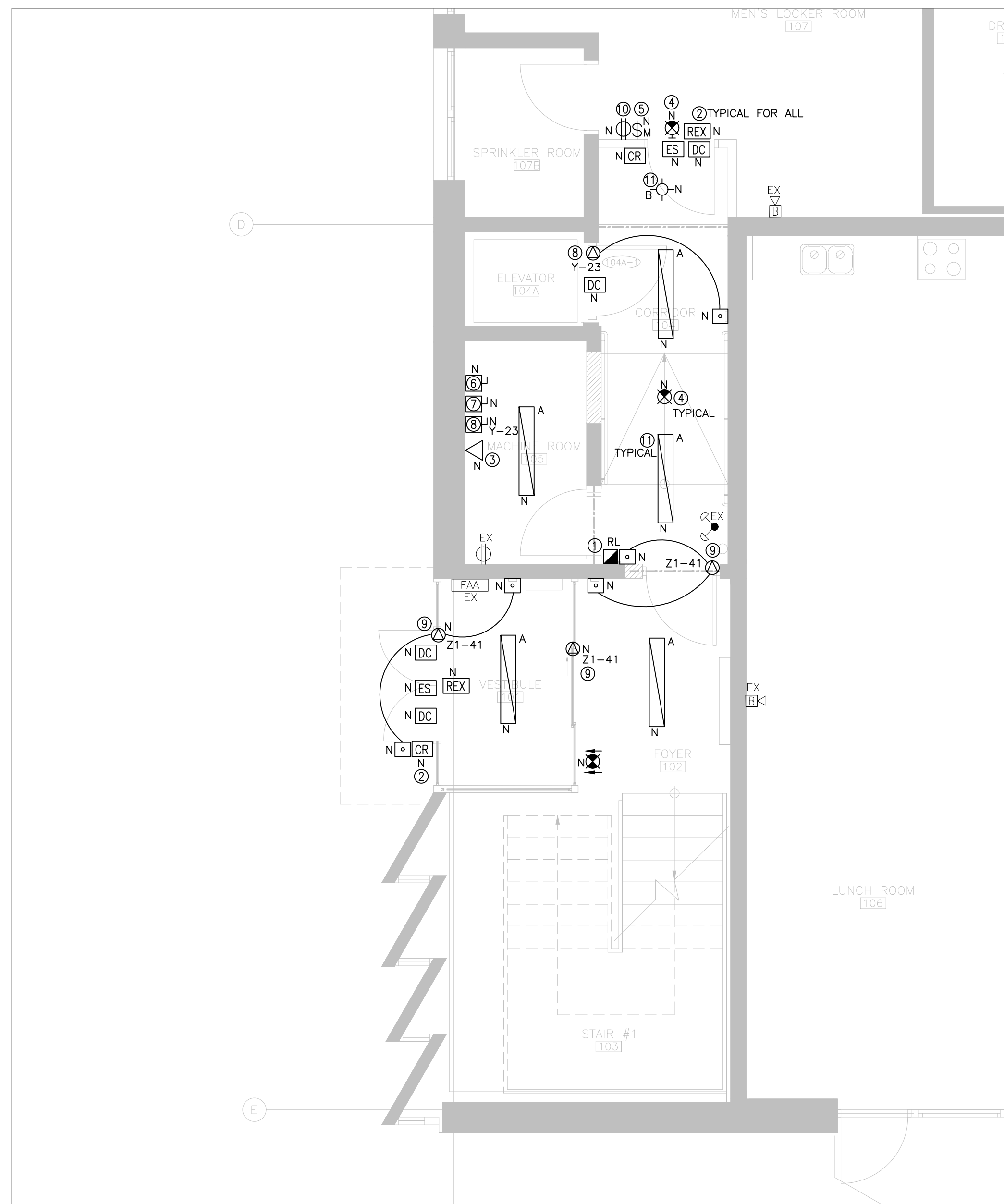
project engineer: **FH** project designer: **FH**

sheet title:
DRAWING LIST, DRAWING LEGEND & GENERAL NOTES

scale: **NTS** drawn by: **FH** checked by: **FH** drawing no.: **E-100**
project no.: **CH23-021** plot date: **2024-05-15**



1 PARTIAL GROUND FLOOR LIGHTING, POWER & SYSTEM DEMOLITION LAYOUT
 E-201 SCALE: 1:50



2 PARTIAL GROUND FLOOR LIGHTING, POWER & SYSTEM MODIFICATION LAYOUT
 E-201 SCALE: 1:50

DRAWING NOTES:

- ① EXISTING FIRE ALARM MANUAL PULL STATION SHALL BE DISCONNECTED AND RELOCATED TO SUIT DEMOLITION WORK. REWORK EXISTING CONDUIT AND FIRE ALARM WIRING TO SUIT. REFER TO DETAIL #2 ON THIS DRAWING FOR FURTHER DETAIL.
- ② EXISTING SECURITY CONDUIT FOR CARD READER, ELECTRIC STRIKE, DOOR CONTACT, REQUEST TO EXIT, AND ETC. SHALL BE REMOVED BACK TO THE NEAREST CEILING JUNCTION BOX TO SUIT REMOVAL OF SECURITY DEVICE. REMOVE ASSOCIATED BACK BOX TO SUIT. PROVIDE NEW SECURITY ROUGH-IN PER DETAIL #2 ON THIS DRAWING TO SUIT RELOCATION OF SECURITY DEVICE INSTALLATION.
- ③ EXISTING INTERCOM CONDUIT SHALL BE REMOVED BACK TO THE NEAREST CEILING JUNCTION BOX TO SUIT REMOVAL OF SECURITY DEVICE. REMOVE ASSOCIATED BACK BOX TO SUIT. PROVIDE NEW INTERCOM CONDUIT AND BACK BOX ROUGH-IN PER DETAIL #2 ON THIS DRAWING TO SUIT RELOCATION OF INTERCOM DEVICE INSTALLATION.
- ④ EXISTING EXIT SIGN SHALL BE DISCONNECTED AND REMOVED. MAKE SAFE OF EXISTING FEEDER. REWORK EXISTING FEEDER, EXTEND AND CONNECT TO THE NEW EXIT SIGN AS SHOWN ON DETAIL #2 OF THIS DRAWING.
- ⑤ EXISTING RECEPTACLE SHALL BE DISCONNECTED AND REMOVED. MAKE SAFE OF EXISTING FEEDER. REWORK EXISTING FEEDER, EXTEND AND CONNECT TO THE NEW RECEPTACLE AS SHOWN ON DETAIL #2 OF THIS DRAWING.
- ⑥ EXISTING EXHAUST FAN EF-19 STARTER SWITCH SHALL BE DISCONNECTED AND REMOVED TO SUIT REPLACEMENT OF EXHAUST FAN EF-19. MAKE SAFE OF EXISTING FEEDER. REWORK EXISTING FEEDER, EXTEND AND CONNECT TO THE NEW MOTOR RATED SWITCH COMPLETE WITH PILOT LIGHT AS SHOWN ON DETAIL #2 OF THIS DRAWING.
- ⑦ EXISTING 30AMP, 208V, 3PHASE FUSED DISCONNECT SWITCH FOR THE HANDICAP LIFT SHALL BE DISCONNECTED AND REMOVED. BRING BACK THE EXISTING FEEDER TO THE NEAREST JUNCTION BOX AND MAKE SAFE. REWORK EXISTING FEEDER, EXTEND AND CONNECT TO THE NEW 30AMP, 208V, 3PHASE, ELEVATOR FUSED DISCONNECT SWITCH. REFER TO DETAIL #2 ON THIS DRAWING. COORDINATE ALL WORK WITH ELEVATOR CONTRACTOR ON SITE.
- ⑧ EXISTING 120V CAB LIGHTING DISCONNECT SWITCH SHALL BE DISCONNECTED AND REMOVED. BRING BACK THE EXISTING FEEDER TO THE NEAREST JUNCTION BOX AND MAKE SAFE. REWORK EXISTING FEEDER, EXTEND AND CONNECT TO THE NEW FUSED DISCONNECT SWITCH FOR THE NEW CAB LIGHTING. REFER TO DETAIL #2 ON THIS DRAWING. COORDINATE ALL WORK WITH ELEVATOR CONTRACTOR ON SITE.
- ⑨ EXISTING LIGHT FIXTURE SHALL BE DISCONNECTED AND REMOVED. MAKE SAFE OF EXISTING WIRING. REWORK AND EXTEND TO CONNECT TO THE NEW LIGHT FIXTURE. REFER TO DETAIL #2 ON THIS DRAWING.

DRAWING NOTES:

- ① INSTALL EXISTING FIRE ALARM MANUAL PULL STATION OBTAINED FROM DEMOLITION AT LOCATION AS SHOWN. REWORK EXISTING CONDUIT AND FIRE ALARM WIRING, EXTEND AND CONNECT TO SUIT. PROVIDE FIRE ALARM TESTING AND VERIFICATION.
- ② PROVIDE NEW CONDUIT AND BACK BOX TO SUIT RELOCATED CARD READER, ELECTRIC STRIKE, DOOR CONTACT, REQUEST TO EXIT, AND ETC. AS SHOWN. NEW CONDUIT SHALL BE TERMINATED AT THE EXISTING SECURITY CEILING JUNCTION BOX. COORDINATE ALL WORK WITH SECURITY CONTRACTOR ON SITE. INCLUDE FOR ALL COST.
- ③ PROVIDE NEW TELEPHONE OUTLET COMPLETE WITH 1 INCH EMPTY CONDUIT WITH PULL STRING AND SHALL BE TERMINATED AT THE DATA ROOM LOCATED AT THE FLOOR ABOVE. ALLOW FOR SCAN, X-RAY AND CORING. COORDINATE EXACT SCOPE OF WORK ON SITE, AND COORDINATE WITH GC AND COMMUNICATION CONTRACTOR FOR ALL WORK.
- ④ PROVIDE NEW EXIT SIGN AND CONNECT TO THE EXISTING EXIT SIGN CIRCUIT OBTAINED FROM DEMOLITION. REWORK AND EXTEND EXISTING FEEDER TO SUIT.
- ⑤ PROVIDE NEW MOTOR RATED EXHAUST FAN STARTER SWITCH COMPLETE WITH PILOT LIGHT FOR NEW EXHAUST FAN EF-19. REWORK EXISTING CONDUIT AND WIRING, EXTEND AND CONNECT TO SUIT. INCLUDE FOR ALL COST.
- ⑥ PROVIDE NEW 30AMP, 208V, 3PHASE, FUSED LOCKABLE ELEVATOR CONTROL SWITCH COMPLETE WITH AUXILIARY CONTACT FOR THE NEW ELEVATOR. EXTEND EXISTING FEEDER OBTAINED FROM DEMOLITION AND CONNECT TO THE NEW FUSED DISCONNECT SWITCH AND CONNECT TO THE NEW ELEVATOR CONTROLLER. PROVIDE NEW CONDUIT AND WIRING TO SUIT. PROVIDE 3/4" EMPTY CONDUIT COMPLETED WITH LOW VOLTAGE CONTROL WIRING FROM THE ELEVATOR CONTROL SWITCH AUXILIARY CONTACT AND CONNECT TO THE ELEVATOR CONTROLLER FOR BATTERY LOWERED. COORDINATE ALL WORK WITH ELEVATOR CONTRACTOR ON SITE.
- ⑦ PROVIDE NEW LOCKABLE DISCONNECT SWITCH FOR 120V CAB LIGHTING. REUSE EXISTING FEEDER OBTAINED FROM DEMOLITION. PROVIDE NEW CONDUIT AND WIRING AND CONNECT TO THE NEW CAB LIGHTING THROUGH THE NEW LOCKABLE DISCONNECT SWITCH. COORDINATE ALL WORK WITH ELEVATOR CONTRACTOR ON SITE.
- ⑧ PROVIDE NEW LOCKABLE DISCONNECT SWITCH FOR ELEVATOR AUTO DOOR OPERATOR. PROVIDE 15A-1P BREAKER AT EXISTING PANEL Y, AT CIRCUIT #23 COMPLETE WITH ASSOCIATED CONDUIT AND WIRING AND CONNECT TO THE NEW DISCONNECT SWITCH AND CONNECT TO THE NEW ELEVATOR AUTO DOOR OPERATOR. COORDINATE ALL WORK WITH ELEVATOR CONTRACTOR ON SITE.
- ⑨ UTILIZE EXISTING SPARE 15A-1P BREAKER AT PANEL Z1, CIRCUIT #39. PROVIDE ASSOCIATED CONDUIT AND WIRING AND CONNECT TO THE NEW DOOR OPERATOR AS SHOWN.
- ⑩ PROVIDE NEW RECEPTACLE AND CONNECT TO EXISTING CIRCUIT OBTAINED FROM DEMOLITION. REWORK AND EXTEND EXISTING FEEDER TO SUIT.
- ⑪ PROVIDE NEW LIGHT FIXTURE AS SHOWN AND CONNECT TO EXISTING LIGHTING CIRCUIT OBTAINED FROM DEMOLITION. EXTEND EXISTING CONDUIT AND WIRING TO SUIT. THE EXISTING LIGHTING CONTROL SHALL REMAIN THE SAME. INCLUDE FOR ALL COST.

#	DATE	REVISION
4	JULY.05.24	ISSUED FOR TENDER
3	JUN.21.24	ISSUED FOR PRE-TENDER REVIEW
2	MAY.15.24	ISSUED FOR PERMIT
1	JAN.29.24	ISSUED FOR 66% REVIEW

DATE ISSUED

THE ARCHITECT IS NOT RESPONSIBLE FOR THE ACCURACY OF SURVEY, STRUCTURAL, MECHANICAL, ELECTRICAL, ETC. ENGINEERING INFORMATION SHOWN ON THE DRAWING. REFER TO THE APPROPRIATE ENGINEERING DRAWINGS BEFORE PROCEEDING WITH WORK.

CONTRACTOR SHALL CHECK ALL DIMENSIONS ON THE WORK AND REPORT ANY DISCREPANCY TO THE ARCHITECT BEFORE PROCEEDING. CONSTRUCTION MUST CONFORM TO ALL APPLICABLE CODES AND REQUIREMENTS OF AUTHORITIES HAVING JURISDICTION.

THIS DRAWING IS NOT TO BE SCALED. THIS DRAWING IS NOT TO BE USED FOR CONSTRUCTION UNLESS SIGNED BY THE ARCHITECT.

ISSUED FOR CONSTRUCTION

SIGNATURE _____

DATE _____

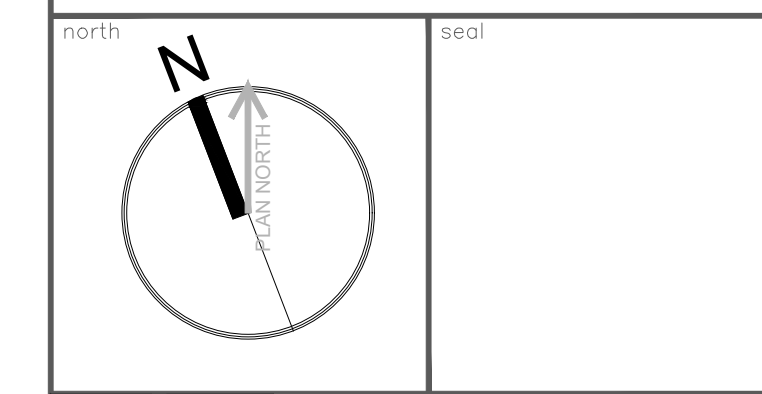
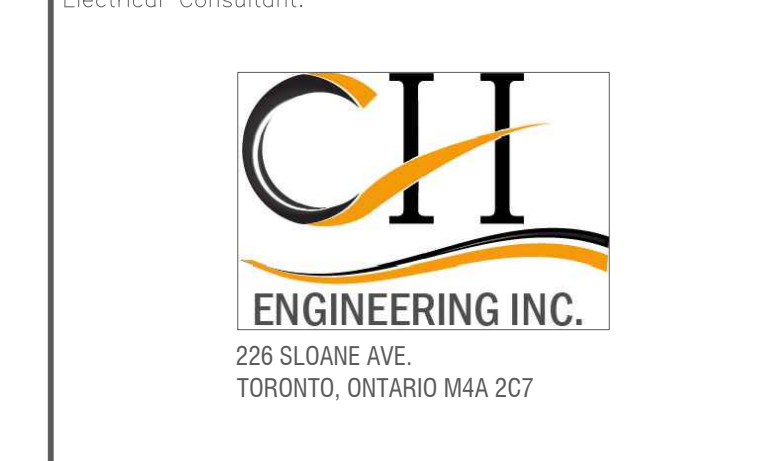


client project no.

project:

MAVIS S.MECH. & ROOF RENEWAL
 CITY OF MISSISSAUGA

3185 MAVID RD, MISSISSAUGA, ON L5C 1T7



pda Paul Didur Architect Inc.
 BCDN No. 2033

222 Islington Ave., Suite 260
 Toronto, Ontario, M8V 3W7
 E-mail: pda@pdaarchitect.com W: www.pdaarchitect.com
 T-416 928 1041 F-416 928 1051

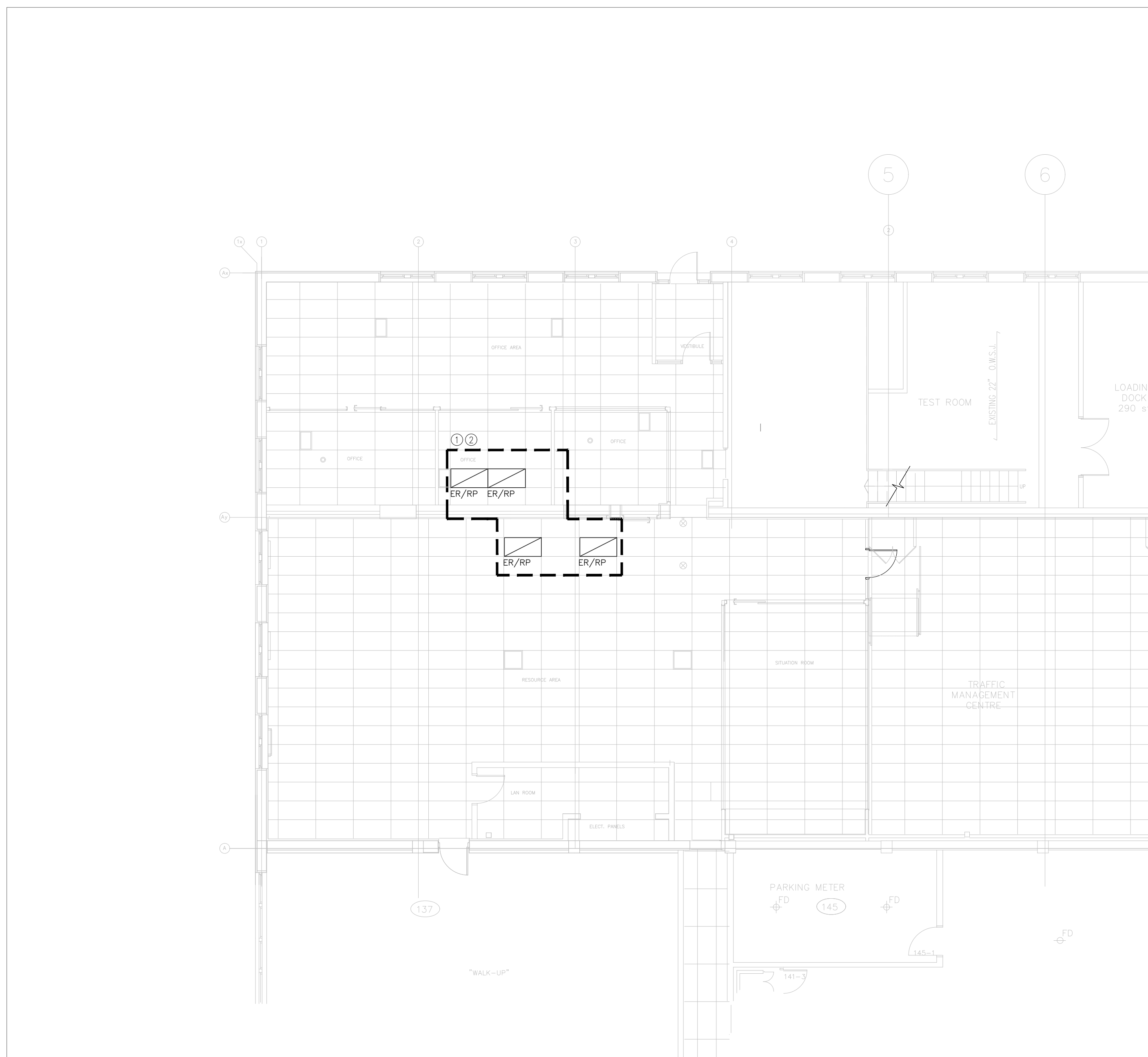
project engineer: **FH** project designer: **FH**

sheet title:

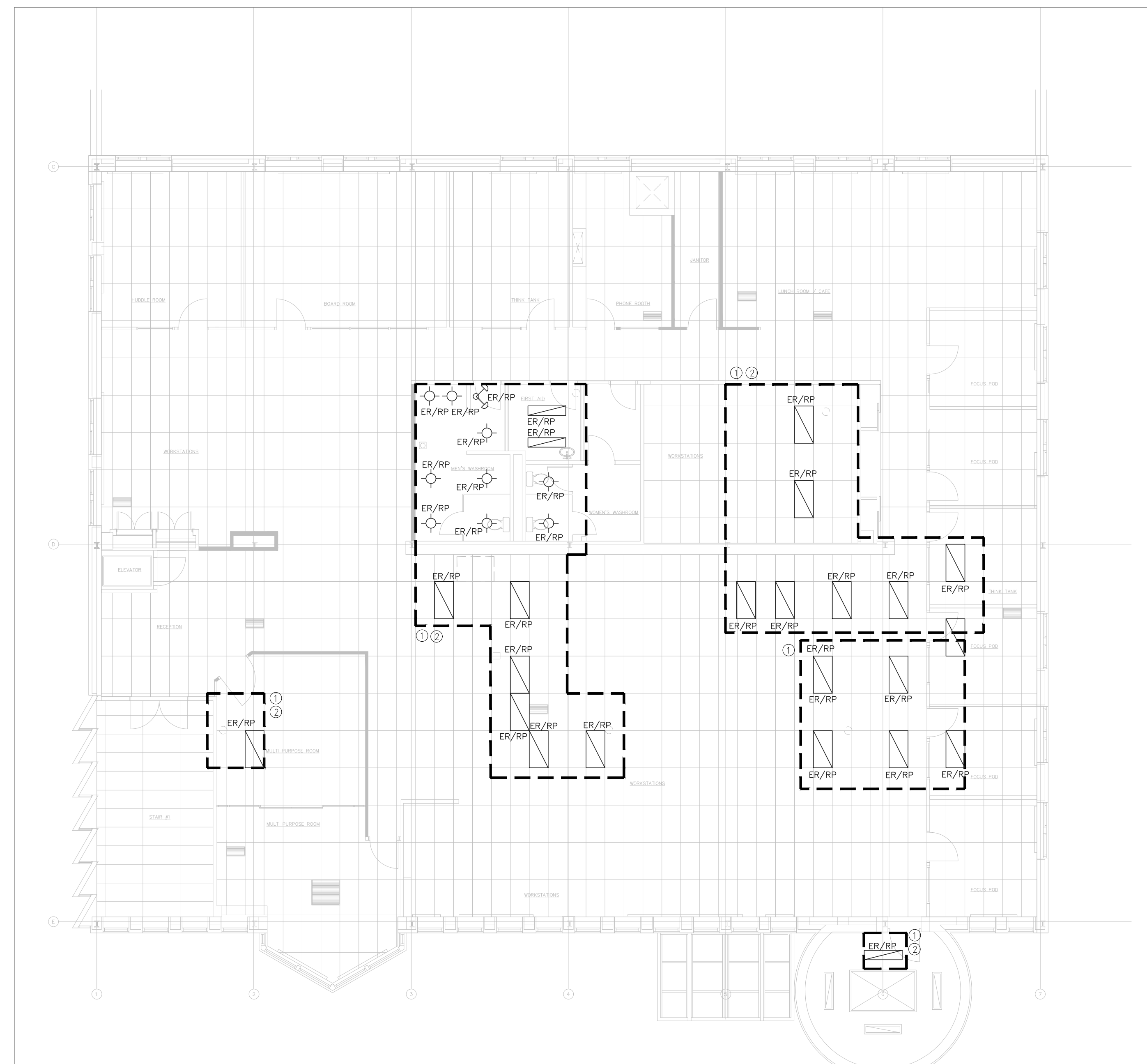
PARTIAL GROUND FLOOR LIGHTING, POWER & SYSTEMS DEMOLITION & MODIFICATION PLAN

scale: **1:50** drawn by: **FH** checked by: **FH** drawing no.: **E-201**

project no.: **CH23-021** plot date: **2024-05-15**



1 GROUND FLOOR LIGHTING DEMOLITION LAYOUT
E-203 SCALE: 1:100



2 SECOND FLOOR LIGHTING DEMOLITION LAYOUT
E-203 SCALE: 1:100

DRAWING NOTES:

- ① EXISTING CEILING MOUNTED LIGHTING SHALL BE DISCONNECTED AND REMOVED TO SUIT MECHANICAL WORK ABOVE CEILING. RE-INSTALL ALL FIXTURE BACK TO EXISTING LOCATION AND RECONNECT TO EXISTING CIRCUIT UPON COMPLETION OF MECHANICAL WORK. COORDINATE ALL WORK WITH MECHANICAL CONTRACTOR ON SITE. ALLOW FOR CUTTING, PATCHING AND RE-PAINT EXISTING DRYWALL TO SUIT ALL WORK. INCLUDE ALL ASSOCIATED COST IN THE TENDER BIT.
- ② CONTRACTOR SHALL INCLUDE IN TENDER BID FOR ADDITIONAL OF SIX (6) LIGHT FIXTURES TO BE DISCONNECT AND REMOVED TO SUIT MECHANICAL WORK AND RE-INSTALL AT THE SAME LOCATION.

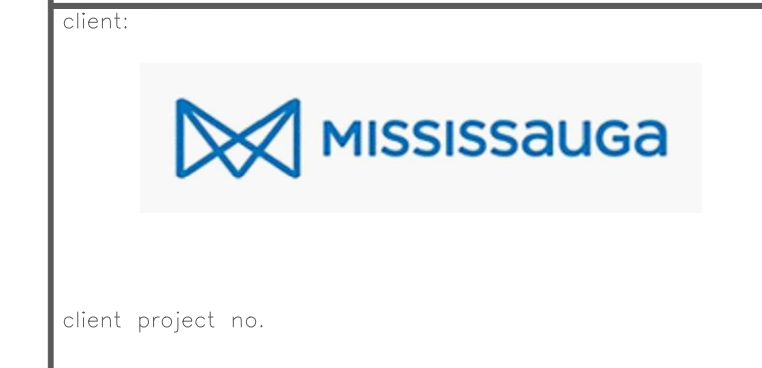
#	DATE	REVISION
4	JULY.05.24	ISSUED FOR TENDER
3	JUN.21.24	ISSUED FOR PRE-TENDER REVIEW
2	MAY.15.24	ISSUED FOR PERMIT
1	JAN.29.24	ISSUED FOR 66% REVIEW

THE ARCHITECT IS NOT RESPONSIBLE FOR THE ACCURACY OF SURVEY, STRUCTURAL, MECHANICAL, ELECTRICAL, ETC. ENGINEERING INFORMATION SHOWN ON THE DRAWING. REFER TO THE APPROPRIATE ENGINEERING DRAWINGS BEFORE PROCEEDING WITH WORK.

CONTRACTOR SHALL CHECK ALL DIMENSIONS ON THE WORK AND REPORT ANY DISCREPANCY TO THE ARCHITECT BEFORE PROCEEDING. CONSTRUCTION MUST CONFORM TO ALL APPLICABLE CODES AND REQUIREMENTS OF AUTHORITIES HAVING JURISDICTION.

THIS DRAWING IS NOT TO BE SCALED.
THIS DRAWING IS NOT TO BE USED FOR CONSTRUCTION UNLESS SIGNED BY THE ARCHITECT.

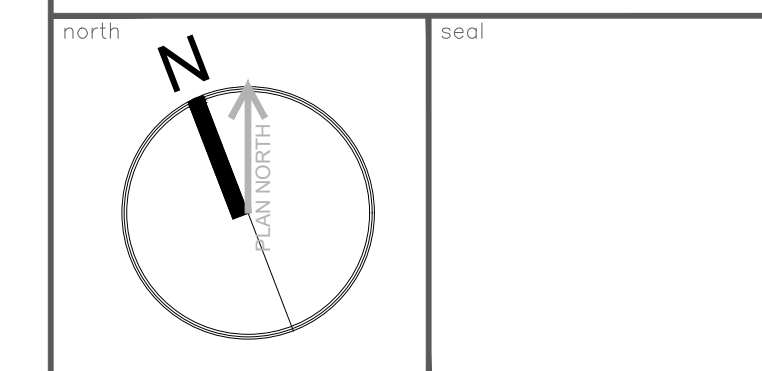
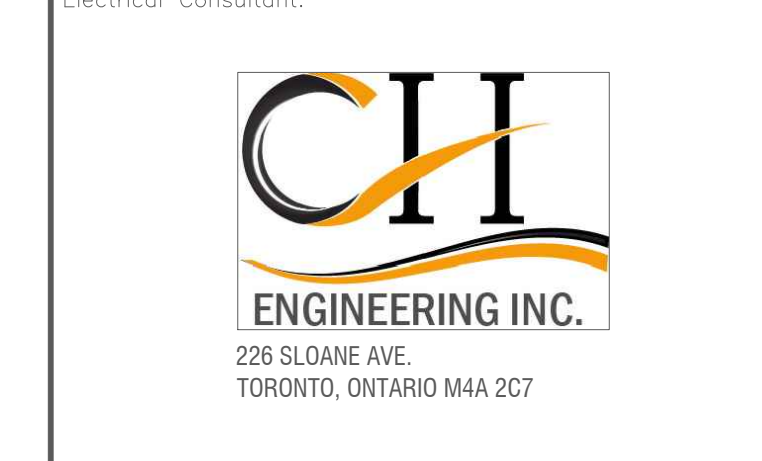
ISSUED FOR CONSTRUCTION
SIGNATURE _____
DATE _____



client project no. _____

project:
MAVIS S.MECH. & ROOF RENEWAL
CITY OF MISSISSAUGA

3185 MAVID RD, MISSISSAUGA, ON L5C 1T7



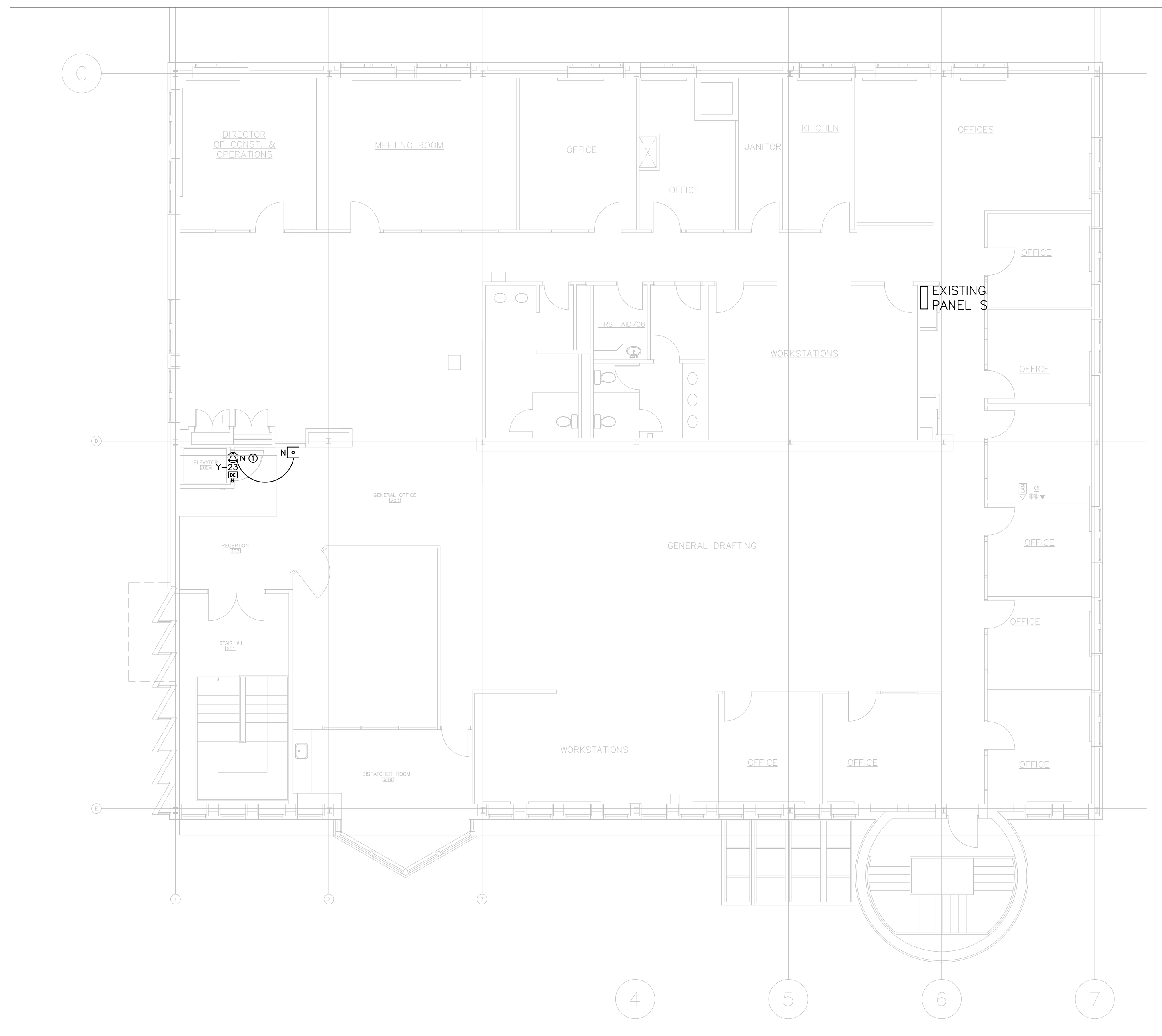
pda Paul Didur Architect Inc.
BCDN No. 2033

222 Islington Ave., Suite 260
Toronto, Ontario, M8V 3W7
E-mail: pdarchitect.com W: www.pdarchitect.com
T-416 928 1041 F-416 928 1051

project engineer: **FH** project designer: **FH**

sheet title:
GROUND & 2ND FLOOR LIGHTING DEMOLITION PLAN

scale: **1:100** drawn by: **FH** checked by: **FH** drawing no.: **E-203**
project no.: **CH23-021** plot date: **2024-05-15**



DRAWING NOTES:

① CONNECT THE NEW ELEVATOR AUTO DOOR OPERATOR TO PANEL Y, CIRCUIT #Y-23 THROUGH NEW DISCONNECT SWITCH LOCATED IN THE GROUND FLOOR ELEVATOR MACHINE ROOM. PROVIDE ASSOCIATED CONDUIT AND WIRING TO SUIT. ALLOW FOR SCAN, X-RAY AND CORING TO SUIT. INCLUDE FOR ALL COST.

#	DATE	REVISION
4	JULY.05.24	ISSUED FOR TENDER
3	JUN.21.24	ISSUED FOR PRE-TENDER REVIEW
2	MAY.15.24	ISSUED FOR PERMIT
1	JAN.29.24	ISSUED FOR 66% REVIEW

THE ARCHITECT IS NOT RESPONSIBLE FOR THE ACCURACY OF SURVEY, STRUCTURAL, MECHANICAL, ELECTRICAL, ETC. ENGINEERING INFORMATION SHOWN ON THE DRAWING. REFER TO THE APPROPRIATE ENGINEERING DRAWINGS BEFORE PROCEEDING WITH WORK.

CONTRACTOR SHALL CHECK ALL DIMENSIONS ON THE WORK AND REPORT ANY DISCREPANCY TO THE ARCHITECT BEFORE PROCEEDING. CONSTRUCTION MUST CONFORM TO ALL APPLICABLE CODES AND REQUIREMENTS OF AUTHORITIES HAVING JURISDICTION.

THIS DRAWING IS NOT TO BE SCALED.

THIS DRAWING IS NOT TO BE USED FOR CONSTRUCTION UNLESS SIGNED BY THE ARCHITECT.

ISSUED FOR CONSTRUCTION

SIGNATURE _____

DATE _____

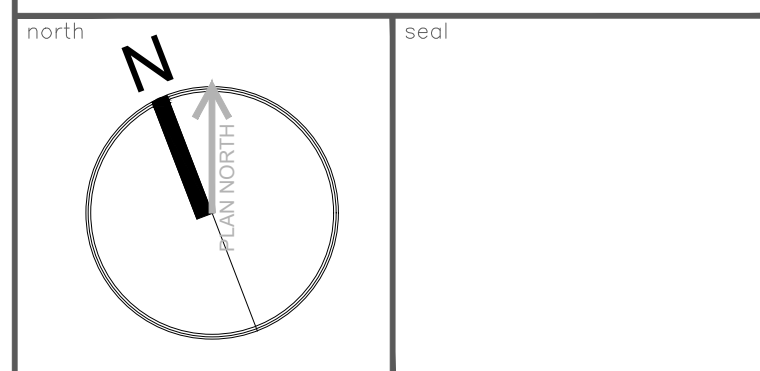


client project no.

project:

MAVIS S.MECH. & ROOF RENEWAL
CITY OF MISSISSAUGA

3185 MAVID RD, MISSISSAUGA, ON L5C 1T7



pda Paul Didur Architect Inc.
 BCDN No. 2033

222 Islington Ave., Suite 260
 Toronto, Ontario, M8V 3W7
 E-mail: pdarchinc.com W: www.pdarchinc.com
 T-416 928 1041 F-416 928 1051

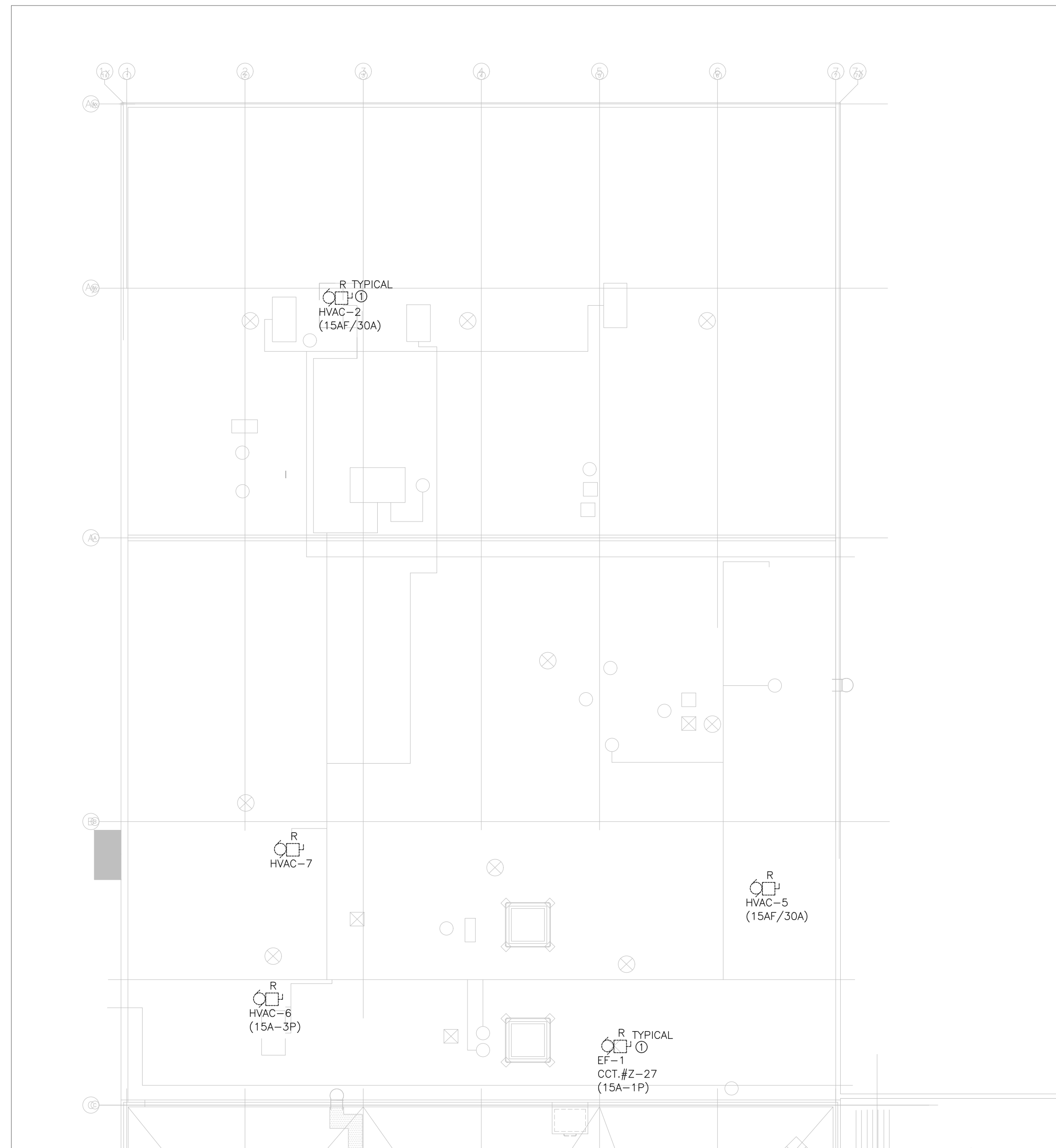
project engineer: **FH** project designer: **FH**

sheet title:

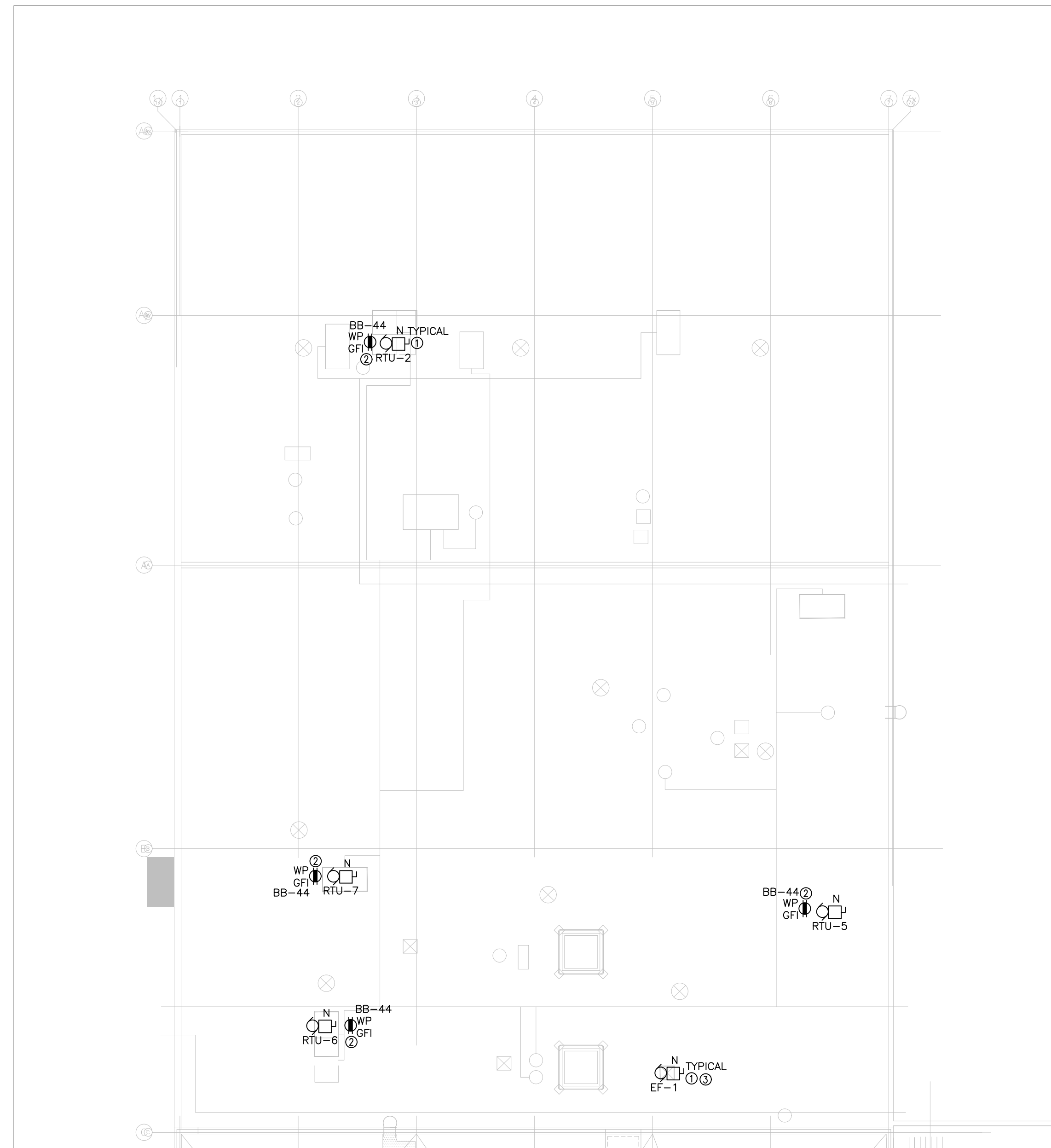
2ND FLOOR POWER MODIFICATION PLAN

scale: **1:100** drawn by: **FH** checked by: **FH** drawing no.: **E-204**

project no.: **CH23-021** plot date: **2024-05-15**



1 PARTIAL ROOF - NORTH POWER DEMOLITION LAYOUT
E-301 SCALE: 1:150



2 PARTIAL ROOF - NORTH POWER MODIFICATION LAYOUT
E-301 SCALE: 1:150

DRAWING NOTES:

① DISCONNECT EXISTING FEEDER FEEDING EXISTING MECHANICAL EQUIPMENT ON THE ROOF TO SUIT REMOVAL OF THE EQUIPMENT. BRING BACK EXISTING FEEDER TO THE NEAREST JUNCTION BOX AND MAKE SAFE. REWORK EXISTING FEEDER, EXTEND AND CONNECT TO THE NEW MECHANICAL EQUIPMENT ON THE ROOF. REFER TO DRAWING E302 FOR FURTHER DETAIL

DRAWING NOTES:

- ① REWORK EXISTING FEEDER OBTAINED FROM DEMOLITION, EXTEND AND CONNECT TO THE NEW MECHANICAL EQUIPMENT AS SHOWN. PROVIDE NEW LOCAL WEATHERPROOF UNFUSED DISCONNECT SWITCH PER MECHANICAL SCHEDULE. REFER TO MECHANICAL DRAWING FOR DETAILS. INCLUDE FOR ALL COSTS.
- ② PROVIDE NEW 20A-1P BREAKER AT THE RESPECTIVE PANEL AND CIRCUIT NUMBER AS SHOWN. PROVIDE ASSOCIATED CONDUIT AND WIRING AND CONNECT TO NEW 20A RECEPTACLE AS SHOWN. ELECTRICAL CONTRACTOR SHALL CONFIRM EXACT CONDUIT ROUTING ON SITE AND INCLUDE ALL ASSOCIATED WORK TO SUIT, INCLUDING, BUT NOT LIMITED TO SCAN, X-RAY, CORING, REMOVAL OF CEILING TILES, CUTTING AND PATCHING DRYWALL CEILING AND ETC. TO SUIT INSTALLATION OF NEW CONDUIT AND WIRING. PROVIDE NEW UNISTRUT MOUNTED WEATHERPROOF COMPLETE WITH WHILE-IN-USE COVER GFI 5-20R RECEPTACLE AS SHOWN. CONFIRM EXACT LOCATION ON SITE.
- ③ ELECTRICAL CONTRACTOR SHALL INCLUDE IN TENDER TO UPDATE EQUIPMENT TAGGING AT THE SOURCE FOR EACH EXHAUST FAN AND ROOF TOP UNIT. TRACE BACK THE CIRCUIT AND REMOVE EXISTING LAMOCOIL PLATE LABEL AND PROVIDE NEW MATCHING MECHANICAL EQUIPMENT TAGGING. ADDITIONALLY, UPDATED EXISTING PANEL DIRECTORY TO SUIT.

#	DATE	REVISION
4	JULY.05.24	ISSUED FOR TENDER
3	JUN.21.24	ISSUED FOR PRE-TENDER REVIEW
2	MAY.15.24	ISSUED FOR PERMIT
1	JAN.29.24	ISSUED FOR 66% REVIEW

THE ARCHITECT IS NOT RESPONSIBLE FOR THE ACCURACY OF SURVEY, STRUCTURAL, MECHANICAL, ELECTRICAL, ETC. ENGINEERING INFORMATION SHOWN ON THE DRAWING. REFER TO THE APPROPRIATE ENGINEERING DRAWINGS BEFORE PROCEEDING WITH WORK.

CONTRACTOR SHALL CHECK ALL DIMENSIONS ON THE WORK AND REPORT ANY DISCREPANCY TO THE ARCHITECT BEFORE PROCEEDING. CONSTRUCTION MUST CONFORM TO ALL APPLICABLE CODES AND REQUIREMENTS OF AUTHORITIES HAVING JURISDICTION.

THIS DRAWING IS NOT TO BE SCALED.
THIS DRAWING IS NOT TO BE USED FOR CONSTRUCTION UNLESS SIGNED BY THE ARCHITECT.

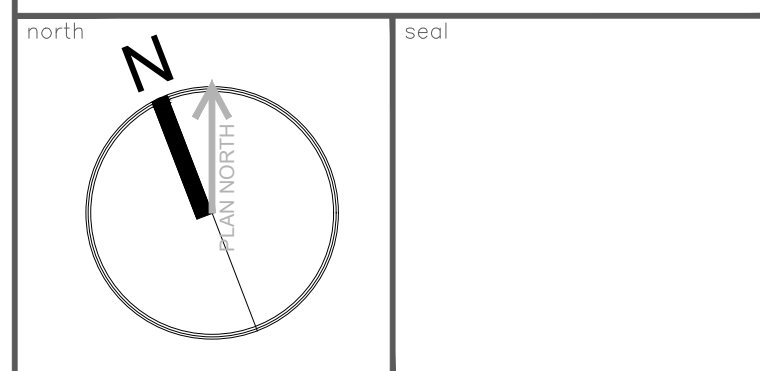
ISSUED FOR CONSTRUCTION
SIGNATURE _____
DATE _____



client project no. _____

project:
MAVIS S.MECH. & ROOF RENEWAL
CITY OF MISSISSAUGA

3185 MAVID RD, MISSISSAUGA, ON L5C 1T7



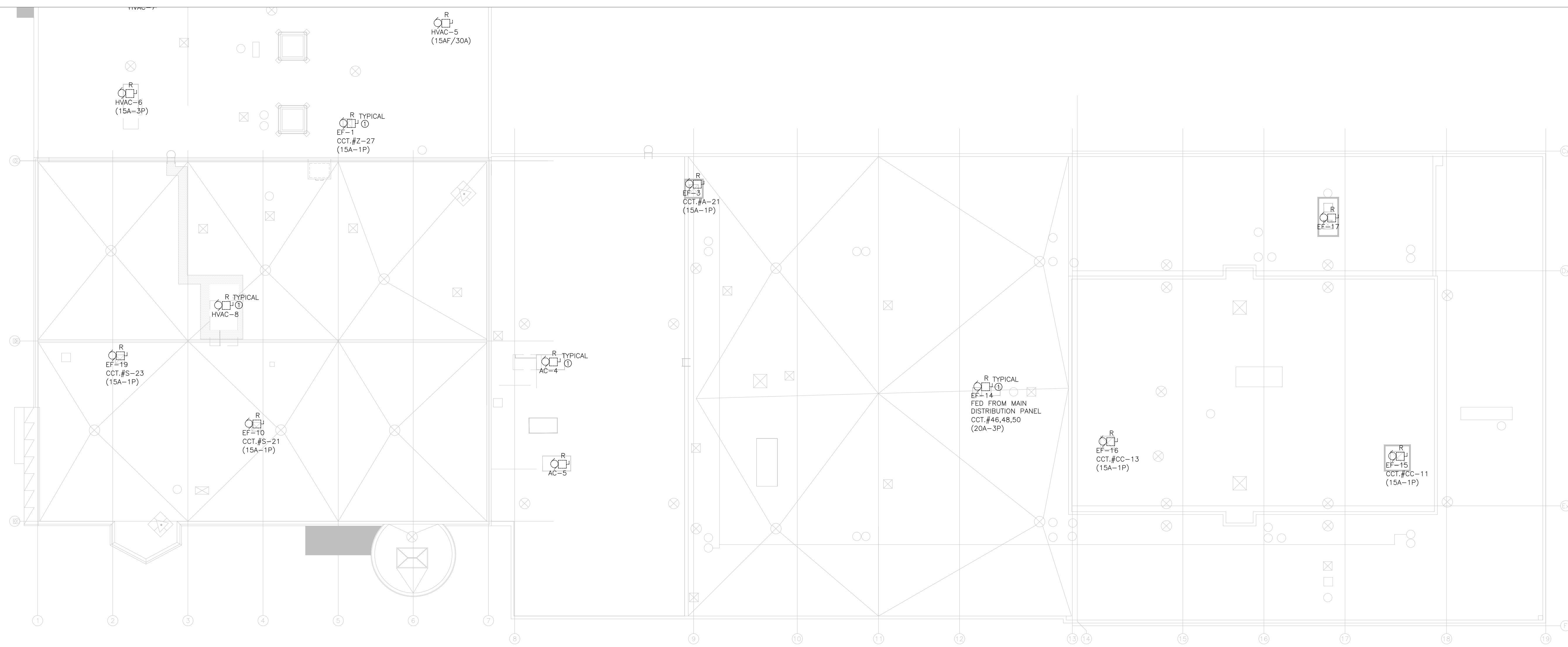
pda Paul Didur Architect Inc.
BCDN No. 2033

222 Islington Ave., Suite 260
Toronto, Ontario, M8V 3W7
E-mail: pd@pdarchitect.com W: www.pdarchitect.com
T-416 928 1041 F-416 928 1051

project engineer: **FH** project designer: **FH**

sheet title:
PARTIAL ROOF - NORTH POWER DEMOLITION & MODIFICATION PLAN

scale: 1:150	drawn by: FH	checked by: FH	drawing no.: E-301
project no.: CH23-021	plot date: 2024-05-15		



DRAWING NOTES:

① DISCONNECT EXISTING FEEDER FEEDING EXISTING MECHANICAL EQUIPMENT ON THE ROOF TO SUIT REMOVAL OF THE EQUIPMENT. BRING BACK EXISTING FEEDER TO THE NEAREST JUNCTION BOX AND MAKE SAFE. REWORK EXISTING FEEDER, EXTEND AND CONNECT TO THE NEW MECHANICAL EQUIPMENT ON THE ROOF. REFER TO DRAWING E302 FOR FURTHER DETAIL

#	DATE	REVISION
4	JULY.05.24	ISSUED FOR TENDER
3	JUN.21.24	ISSUED FOR PRE-TENDER REVIEW
2	MAY.15.24	ISSUED FOR PERMIT
1	JAN.29.24	ISSUED FOR 66% REVIEW

THE ARCHITECT IS NOT RESPONSIBLE FOR THE ACCURACY OF SURVEY, STRUCTURAL, MECHANICAL, ELECTRICAL, ETC. ENGINEERING INFORMATION SHOWN ON THE DRAWING. REFER TO THE APPROPRIATE ENGINEERING DRAWINGS BEFORE PROCEEDING WITH WORK.

CONTRACTOR SHALL CHECK ALL DIMENSIONS ON THE WORK AND REPORT ANY DISCREPANCY TO THE ARCHITECT BEFORE PROCEEDING. CONSTRUCTION MUST CONFORM TO ALL APPLICABLE CODES AND REQUIREMENTS OF AUTHORITIES HAVING JURISDICTION.

THIS DRAWING IS NOT TO BE SCALED.

THIS DRAWING IS NOT TO BE USED FOR CONSTRUCTION UNLESS SIGNED BY THE ARCHITECT.

ISSUED FOR CONSTRUCTION

SIGNATURE _____

DATE _____



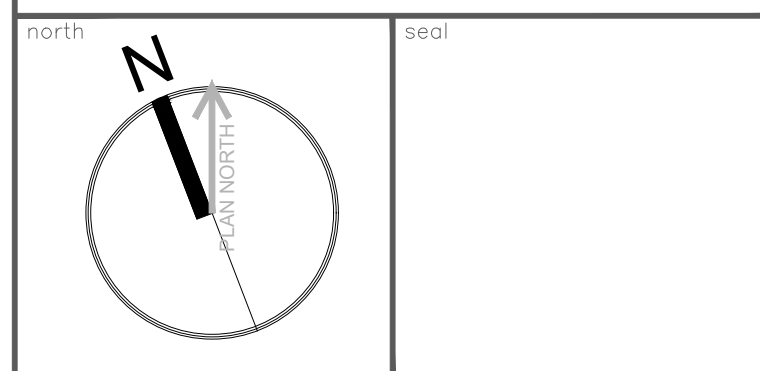
client project no.

project:

**MAVIS S.MECH. & ROOF RENEWAL
CITY OF MISSISSAUGA**

3185 MAVID RD, MISSISSAUGA, ON L5C 1T7

Electrical Consultant:



pda Paul Didur Architect Inc.
BCDN No. 2033

222 Islington Ave., Suite 260
Toronto, Ontario, M8V 3W7
E-mail: pdarchitect.com W: www.pdarchitect.com
T-416 928 1041 F-416 928 1051

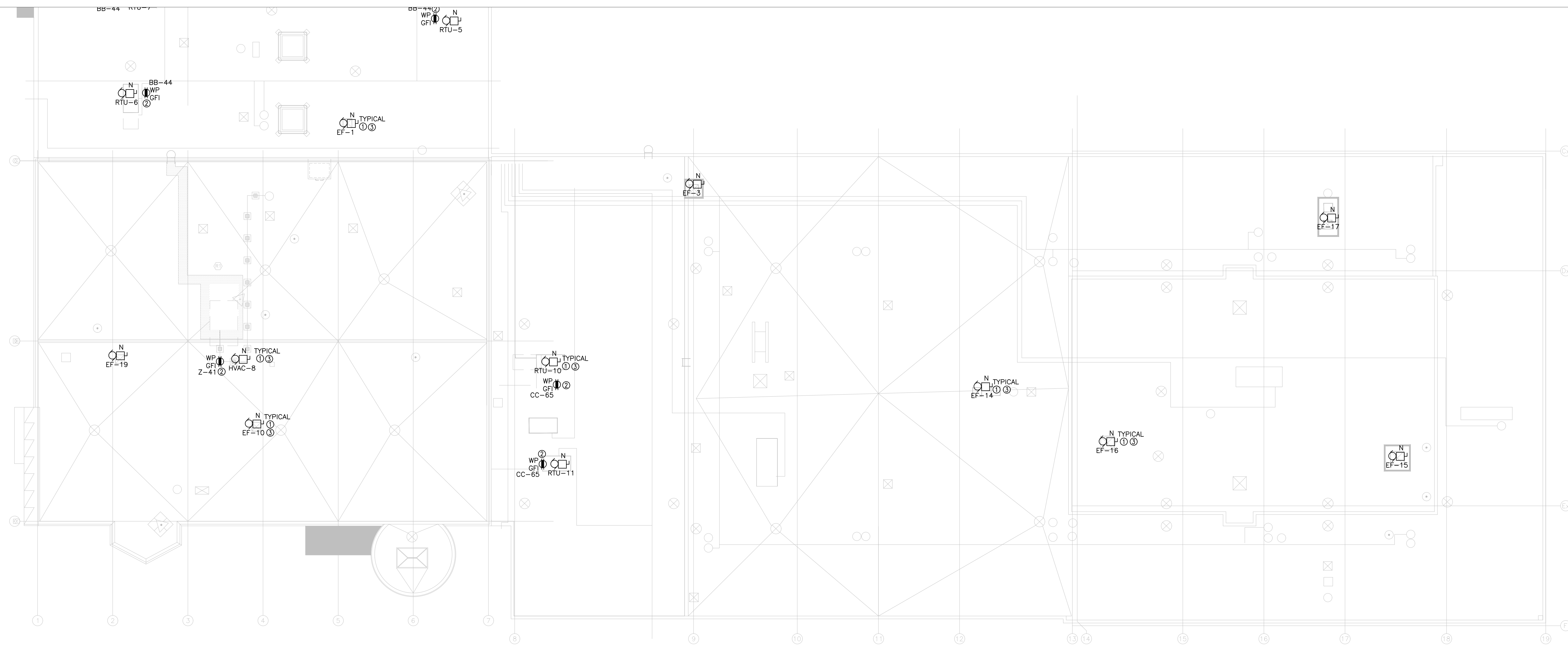
project engineer: **FH** project designer: **FH**

sheet title

**PARTIAL ROOF - EAST
POWER
DEMOLITION PLAN**

scale: **1:150** drawn by: **FH** checked by: **FH** drawing no.: **E-302**

project no.: **CH23-021** plot date: **2024-05-15**



- DRAWING NOTES:**
- ① REWORK EXISTING FEEDER OBTAINED FROM DEMOLITION. EXTEND AND CONNECT TO THE NEW MECHANICAL EQUIPMENT AS SHOWN. PROVIDE NEW LOCAL WEATHERPROOF UNFUSED DISCONNECT SWITCH PER MECHANICAL SCHEDULE. REFER TO MECHANICAL DRAWING FOR DETAILS. INCLUDE FOR ALL COSTS.
 - ② PROVIDE NEW 20A-1P BREAKER AT THE RESPECTIVE PANEL AND CIRCUIT NUMBER AS SHOWN. PROVIDE ASSOCIATED CONDUIT AND WIRING AND CONNECT TO NEW 20A RECEPTACLE AS SHOWN. ELECTRICAL CONTRACTOR SHALL CONFIRM EXACT CONDUIT ROUTING ON SITE AND INCLUDE ALL ASSOCIATED WORK TO SUIT. INCLUDING, BUT NOT LIMITED TO SCAN, X-RAY, CORING, REMOVAL OF CEILING TILES, CUTTING AND PATCHING DRYWALL CEILING AND ETC. TO SUIT INSTALLATION OF NEW CONDUIT AND WIRING. PROVIDE NEW UNISTRUT MOUNTED WEATHERPROOF COMPLETE WITH WHILE-IN-USE COVER GFI 5-20R RECEPTACLE AS SHOWN. CONFIRM EXACT LOCATION ON SITE.
 - ③ ELECTRICAL CONTRACTOR SHALL INCLUDE IN TENDER TO UPDATE EQUIPMENT TAGGING AT THE SOURCE FOR EACH EXHAUST FAN AND ROOF TOP UNIT. TRACE BACK THE CIRCUIT AND REMOVE EXISTING LAMOCOIL PLATE LABEL AND PROVIDE NEW MATCHING MECHANICAL EQUIPMENT TAGGING. ADDITIONALLY, UPDATED EXISTING PANEL DIRECTORY TO SUIT.

#	DATE	REVISION
4	JULY.05.24	ISSUED FOR TENDER
3	JUN.21.24	ISSUED FOR PRE-TENDER REVIEW
2	MAY.15.24	ISSUED FOR PERMIT
1	JAN.29.24	ISSUED FOR 66% REVIEW

THE ARCHITECT IS NOT RESPONSIBLE FOR THE ACCURACY OF SURVEY, STRUCTURAL, MECHANICAL, ELECTRICAL, ETC. ENGINEERING INFORMATION SHOWN ON THE DRAWING. REFER TO THE APPROPRIATE ENGINEERING DRAWINGS BEFORE PROCEEDING WITH WORK.

CONTRACTOR SHALL CHECK ALL DIMENSIONS ON THE WORK AND REPORT ANY DISCREPANCY TO THE ARCHITECT BEFORE PROCEEDING. CONSTRUCTION MUST CONFORM TO ALL APPLICABLE CODES AND REQUIREMENTS OF AUTHORITIES HAVING JURISDICTION.

THIS DRAWING IS NOT TO BE SCALED.

THIS DRAWING IS NOT TO BE USED FOR CONSTRUCTION UNLESS SIGNED BY THE ARCHITECT.

ISSUED FOR CONSTRUCTION

SIGNATURE _____

DATE _____

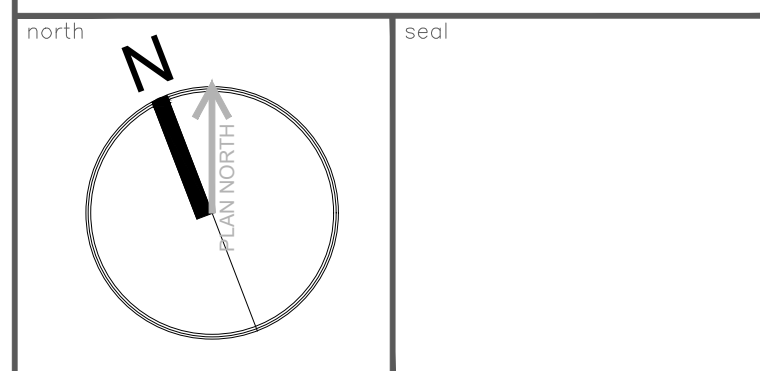


client project no.

project:

**MAVIS S.MECH. & ROOF RENEWAL
CITY OF MISSISSAUGA**

3185 MAVID RD, MISSISSAUGA, ON L5C 1T7



pda Paul Didur Architect Inc.
BCDN No. 2033

222 Islington Ave., Suite 260
Toronto, Ontario, M8V 3W7
E-mail: pdadarchinc.com W: www.pdadarchinc.com
T-416 928 1041 F-416 928 1051

project engineer: **FH** project designer: **FH**

sheet title

**PARTIAL ROOF - EAST
POWER
MODIFICATION PLAN**

scale: **1:150** drawn by: **FH** checked by: **FH** drawing no.: **E-303**

project no.: **CH23-021** plot date: **2024-05-15**