



EXP Services Inc.
220 Commerce Valley Drive West, Suite 110
Markham, Ontario
L3T 0A8

Telephone: 905.695.3217
Facsimile: 905.695.0167

Mechanical Addendum No. 1

Reference: Tender Addendum (PRC004434 / ADD-05)

Issue Date: October 8, 2024

Project: Animal Services Centre – Exterior and Interior Reno Phase 2

This addendum shall form an integral part of the Bid Documents for the above project and shall be read in conjunction therewith. This addendum shall, however, take precedence over all requirements of the previously issued Drawings and Specifications with which it may prove to be at variance, unless otherwise clarified by the Consultant.

This addendum must be signed by the Bidder in the appropriate space and must be attached to the back of the Bid Form for submission at the time of bidding. Bids not including this addendum signed as requested may be rejected as informal.

Revisions / Clarifications

The following changes and clarifications shall be considered when submitting your bid.

1. Mechanical Drawings

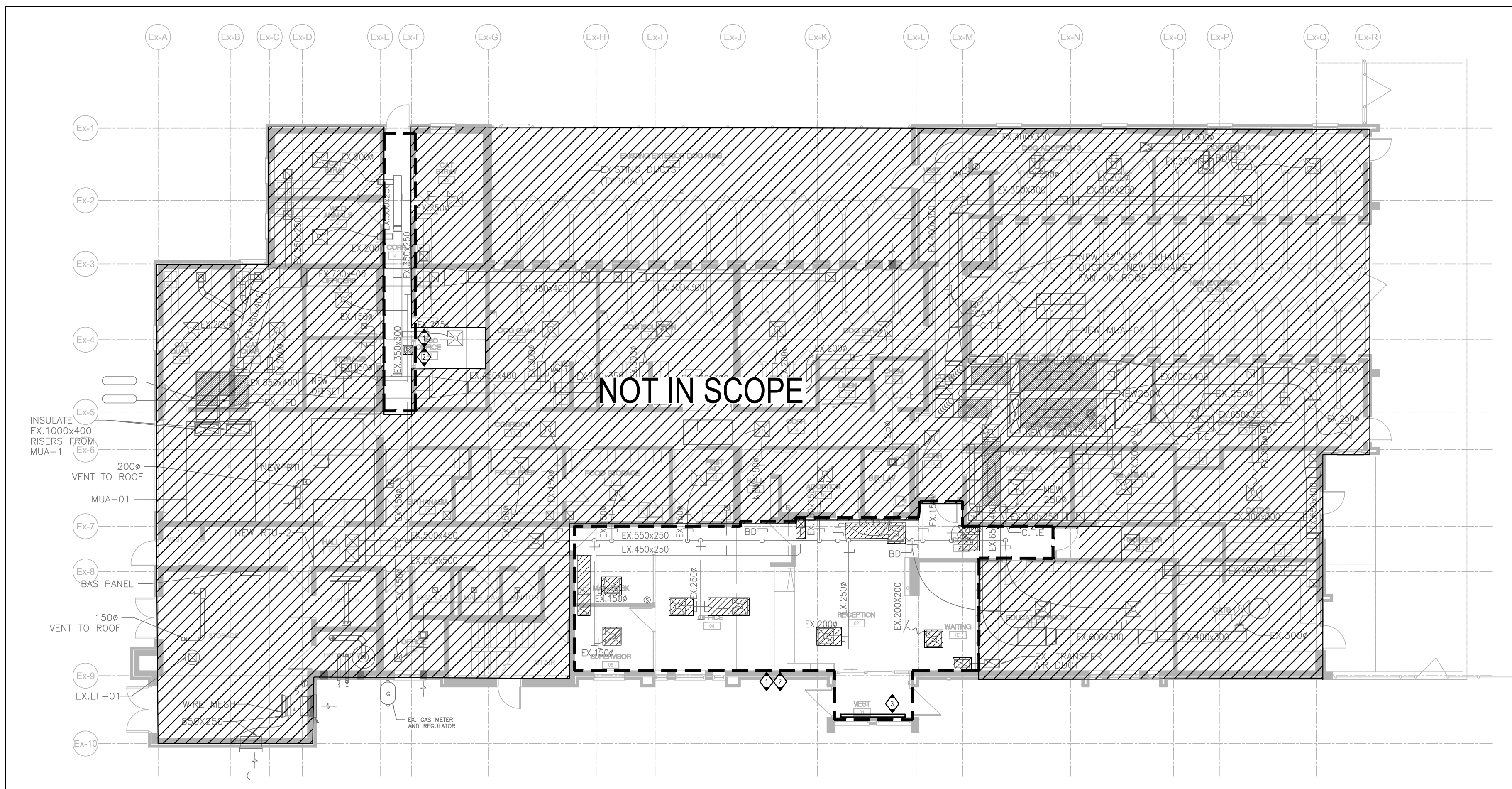
1.1. M200 –MAIN FLOOR – DEMOLITION AND NEW HVAC LAYOUT

1.1.1. NEW HVAC LAYOUT – MAIN FLOOR

- .1 REVISED CONSTRUCTION NOTE #5, CLARIFYING EXTENT OF DUCT CLEANING REQUIRED UPON CONSTRUCTION.**

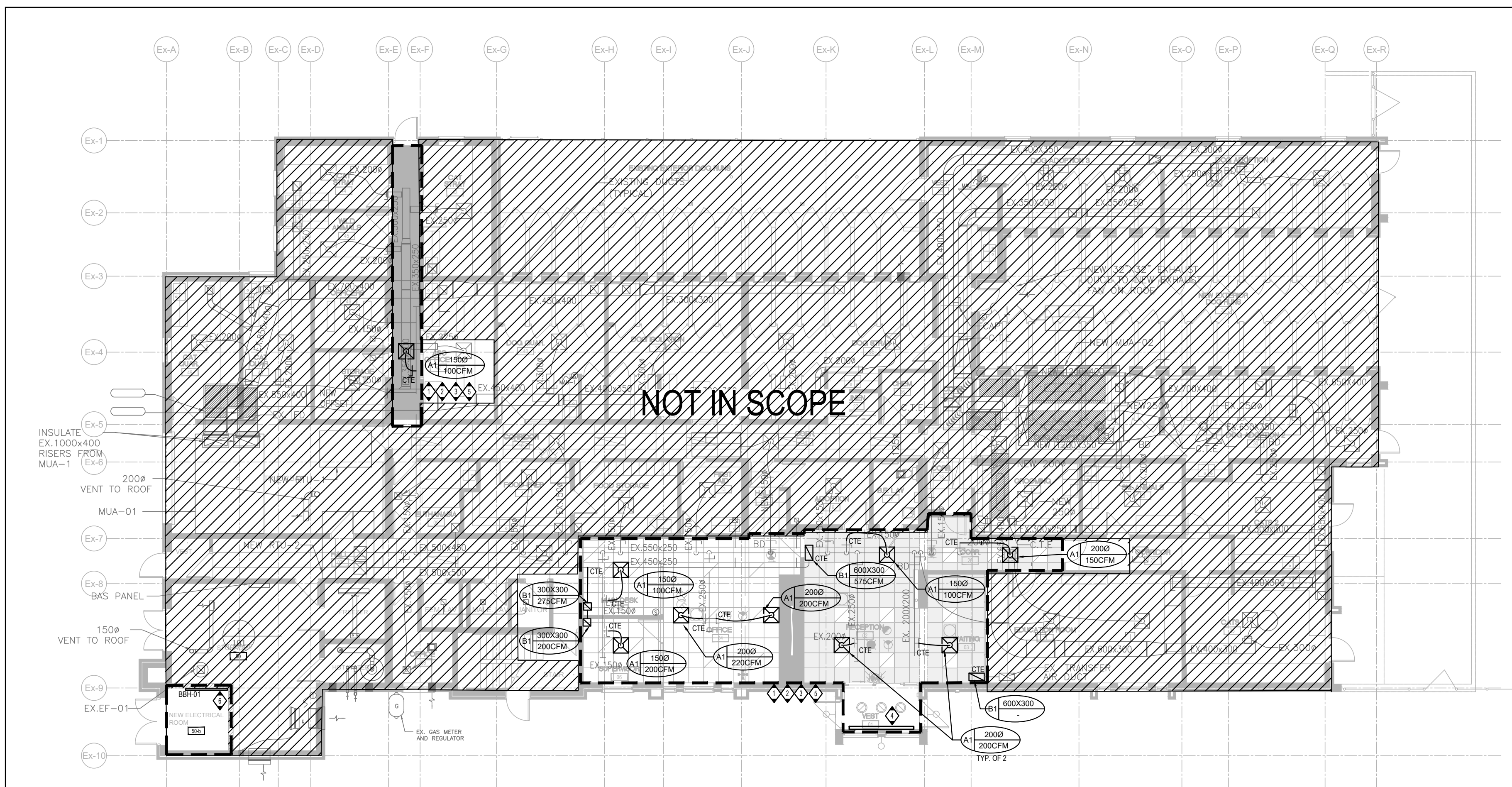
----- **END OF MECHANICAL ADDENDUM No. 5**-----

- 1 CONDUCT AIR PRETEST ON ALL DIFFUSERS AND GRILLES IN SCOPE BOUNDARY PRIOR TO DEMOLITION AND SUBMIT TO MECHANICAL CONSULTANT.
- 2 DEMOLISH INDICATED DIFFUSERS AND GRILLES. DEMOLISH FLEX DUCT CONNECTED TO DIFFUSERS BACK TO RIGID DUCT.
- 3 REMOVE AND STORE VESTIBULE ELECTRIC BASEBOARD HEATER TO ALLOW FOR FLOOR REPLACEMENT.



M200 SCALE: 1:125

- ◆ INSTALL NEW DIFFUSER/GRILLE AND PROVIDE NEW FLEX DUCT CONNECTIONS AS SHOWN.
- ◆ MODIFY EXISTING DUCT CONNECTIONS AS REQUIRED FOR PROPER INSTALLATION.
- ◆ REBALANCE DAMPERS TO MEET PREDEVELOPMENT AIR FLOW CONDITIONS.
- ◆ REINSTATE VESTIBULE ELECTRIC BASEBOARD HEATER AFTER FLOOR REPLACEMENT IS COMPLETE. RECONNECT BACK INTO EXISTING CONTROLS.
- ◆ PERFORM DUCTWORK CLEANING FOR ALL DUCTWORK (SUPPLY AND RETURN) ASSOCIATED WITH THE SYSTEM (RTU-2) UPON THE COMPLETION OF CONSTRUCTION. PROVIDE DUCT CLEANING REPORT TO ENGINEER UPON COMPLETION.
- ◆ INSTALL NEW ELECTRIC BASEBOARD HEATER AT LOW LEVEL CW ALL ACCESSORIES AND SUPPORTS AS REQUIRED.



M200 SCALE: 1:125

[illegible]

	REVISIONS

REVIS
PROJECT

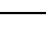


ANIMAL SERVICES
CENTRE

RENOVATION PHASE-02
PROJECT

735 Central Parkway W,
Mississauga, ON L5C 4H4



	ISSUED FOR CONSTRUCTION	DATE
	STRUCTURAL CONSULTANT	EXP SERVICES INC
	MECHANICAL CONSULTANT	EXP SERVICES INC
	ELECTRICAL CONSULTANT	EXP SERVICES INC

DRAWING LIST	
--------------	--

MAIN FLOOR - DEMOLITION AND NEW
HVAC LAYOUT

SHEET NO. M200	DRAWN BY KT	CHECKED ML
	PROJECT NO. MRK-23007421-A0	
	SCALE 1:125	