

**date.** 2024.10.03

**project.** Sherwood Library Renovation | 1225 Wonderland Rd N, London, ON

**project no.** 23-006

**client.** London Public Library – Sherwood Branch

**pages.** 20

This Addendum is issued before the award of Contract to inform the Contractor of certain modifications to the work described in the Drawings and Specifications dated September 18, 2024.

The contractor shall furnish all materials and labour required for completion of the work described including all incidental or necessary items required to complete the work even though not specifically mentioned.

item no.	REFER TO DESCRIPTION
1	<b>Contractor/Sub-Trade Questions (Received by 2024.10.02)</b>
<b>CEILING QUESTIONS:</b>	
1.1	<p><b>Question:</b> A230 Ceiling Design- Will there be a product spec or preferred vendor for purchase?</p> <p><b>RESPONSE:</b> The ceilings on architectural sheet A230 are an Armstrong product composed of AcoustiBuilt suspended ceiling systems (BH4) and Wood Grille Backer ceiling system (WG1). Please see attached Specifications for these ceiling systems. Updated sheet A320 has been included for clarification on the verbiage pertaining to these systems.</p>



**DESIGNATED SUBSTANCES QUESTIONS:**

1.2 **Question:** Pinchin recommends a Pollution Liability Policy be carried. This is standard for City of London CCDC2 projects, however they have asked that the policy be on an 'occurrence basis' where typically this is on a 'claims made' basis. Can you please confirm if a 'claims made' pollution liability policy is acceptable?

**RESPONSE:** 'Claims made' pollution liability is acceptable.

**IDENTIFIED PRICING QUESTIONS:**




1.3 **Question:** Could you please describe what "Identified Pricing - 1 and 2" required on bids&tenders is for?

**RESPONSE:** "Identified Pricing – 1 and 2" are required for cost sharing between the London Public Library and the Mall Owner. This scope includes all work from floor to underside of structure in the identified areas.

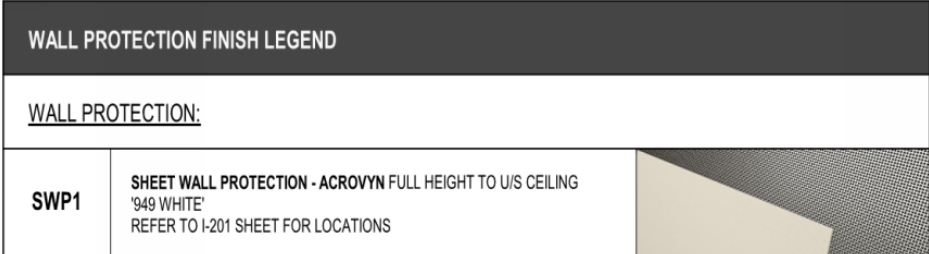
**INTERIOR FINISHES QUESTIONS**

1.4 **Upholstery Question:** On ICC Drawings ICC-200 and ICC-201 it is mentioning Upholstery for "The Nest" but there isn't anything noted on the drawings as to where this is. Can you confirm it's location?

**RESPONSE:** There is no upholstery, all furniture is N.I.C. MILLWORK FINISH LENGED on ICC-200 and ICC-201 is revised as follows:

MILLWORK FINISH LEGEND		
MILLWORK FINISHES		
SS1	SOLID SURFACE: MILLWORK (OR APPROVED EQUAL) SOLID QUARTZITE (SQA)	
PLM1	LAMINATE: FORMICA (OR APPROVED EQUAL) SHIMMER WPT (SW) - (SOLID WOOD FINISH (WPT))	
PLM2	LAMINATE: FORMICA (OR APPROVED EQUAL) RECYCLED BLACK	



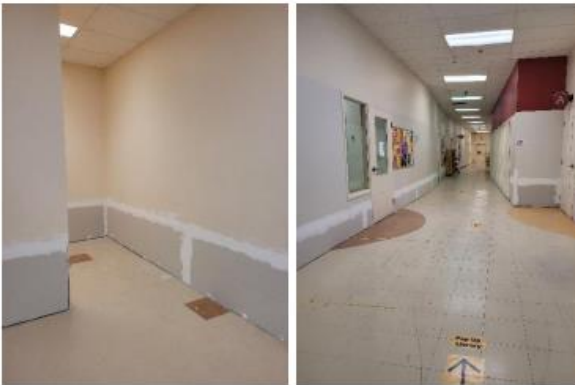
<p>1.5</p>	<p><b>Sheet wall Protection Question:</b> On drawing A600 there is a detail calling for SWP1 for the Washroom wall, but there is nothing in the documentation for details/specification regarding the SWP1. Can this be clarified?</p> <p><b>RESPONSE:</b> Please refer to information on architectural sheets I-200 and I-201, and section 10 26 23 of the Volume 02 Specifications.</p> 
<p>1.6</p>	<p><b>Existing Meeting Room 115 New LVT/RB1 Question:</b> Section 096519 page 2 Maintenance Material Submittals .2</p> <p>Do they want us to allow for rubber base to be left on site for future install of Existing Meeting Room 115 as well as LVT?</p> <p><b>RESPONSE:</b> Yes, contractor to hand over Meeting Room 115 LVT1 and RB1 to the Library for future installation (this scope is not in this contract).</p>
<p><b>WORK AREA QUESTIONS:</b></p>	
<p>1.7</p>	<p><b>Question:</b> Will the space be cleared of shelves, etc, if so by what date?</p> <p><b>RESPONSE:</b> The space will be cleared out by November 1, 2024</p>
<p>1.8</p>	<p><b>Question:</b> Are existing remaining walls impacted by the flood required to be repaired in this contract?</p> <p><b>RESPONSE:</b> The scope that will be required to be covered by the successful contractor includes:</p> <ul style="list-style-type: none"> <li>• All Existing walls to remain shall be repaired where drywall is missing (section at base of wall, see photos below). This includes all areas belonging to the library.</li> </ul>



- Existing walls to remain that have been taped and mudded will require sanding, finishing and painting (see photos below). This includes all areas belonging to the library.



New drywall work required, typ.



Existing drywall finishing required.

**PERMIT STATUS QUESTIONS:**

1.9 **Question:** Has a permit been issued for the project?

**RESPONSE:** The project has received a shell permit.

**BID TIMELINE QUESTIONS:**

1.10 **Question:** As noted at the site visit, we recommend pushing the closing date 2 business days as closing a tender the day after a long weekend will result in a lack of subcontractor interest in the project.

**RESPONSE:** The closing date for Tender 24-01 is now Thursday, October 17 at 2:00pm.



1.11	<p><b>Question:</b> Can the question deadline be extended to the 9th of October?</p> <p><b>RESPONSE:</b> Yes, the question deadline can be extended to October 9<sup>th</sup>, 2024.</p>
------	--

**INFORMATION FOR SUBTRADES:**

1.12	<p><b>A second optional site visit will be open to all subcontractors on Monday October 7<sup>th</sup>, 2024 at 10:00 am.</b></p>
------	---

<b>2</b>	<b>Specifications</b>
2.1	<p>09 54 00 Integrated Ceiling Assemblies (BH4)</p> <p>Refer to attached specification section in response to question 1.1.</p>
2.2	<p>09 54 01 Integrated Ceiling Assemblies (WG1)</p> <p>Refer to attached specification section in response to question 1.1.</p>

<b>3</b>	<b>Architectural Drawings (Addendum 001) dated 2024.10.02 (4 pages)   have regard to revisions and/or clarification to the following drawings</b>
3.1	<p>A-230 CEILING DETAILS</p> <p>Refer to attached revised A320.</p> <p><b>Revise verbiage for WG1 system, including wood grille panels.</b></p>
3.2	<p>ICC-200 MILLWORK KEY PLAN - NORTH</p> <p>Refer to attached revised ICC-200.</p> <p><b>Revise MILLWORK FINISH LEGEND and remove:</b></p> <ul style="list-style-type: none"> <li>• <b>Plam 3, Plam 4, Plam 5</b></li> <li>• <b>UP1, UP2, UP3, UP4, UP5, UP6</b></li> </ul>
3.3	ICC-200 MILLWORK KEY PLAN - SOUTH



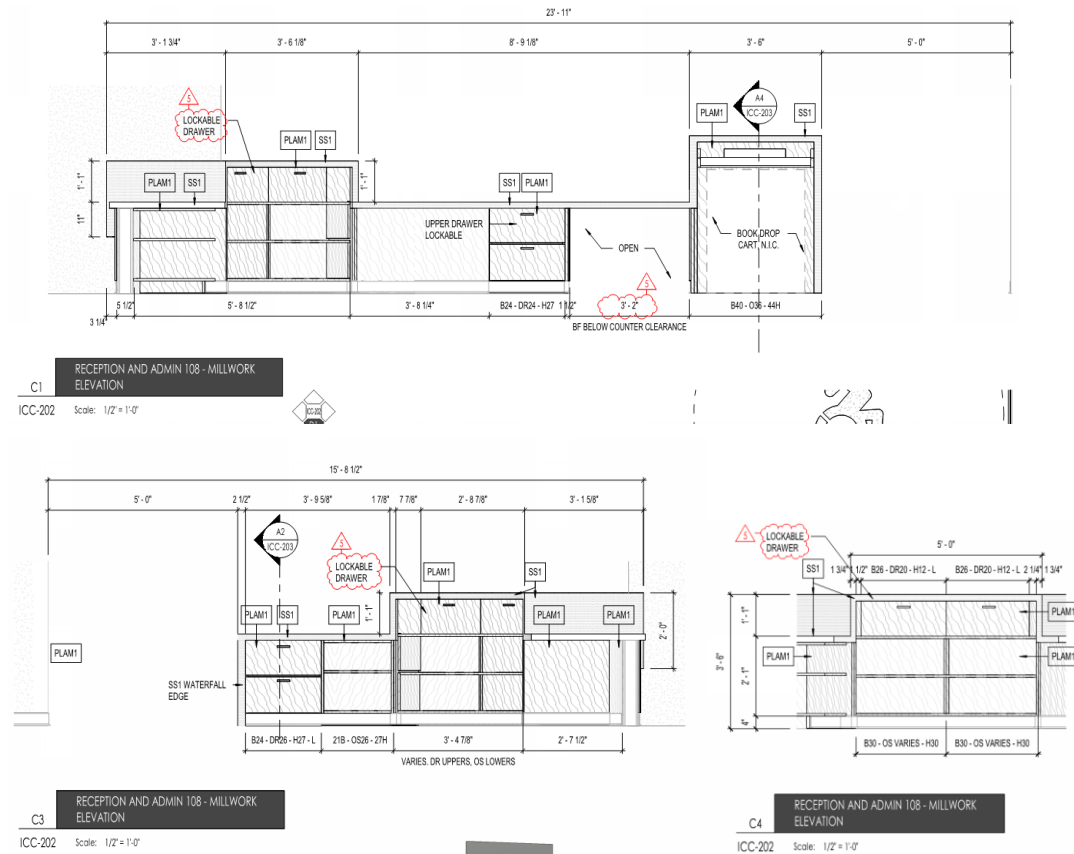
Refer to attached revised ICC-201.  
**Revise MILLWORK FINISH LEGEND and remove:**

- **Plam 3, Plam 4, Plam 5**

**UP1, UP2, UP3, UP4, UP5, UP6**

3.4 ICC-202 MILLWORK PLANS & ELEVATIONS

Refer to attached ICC-202.  
**Revise location of lockable drawer location at the reception/admin desk as follows:**



end of addendum | 001



## Integrated Ceiling Assemblies (BH4)

---

### Part 1 General

#### 1.1 RELATED DOCUMENTS

- .1 Drawings and general conditions of Contract, including General and Supplementary Conditions and Divisions-1 Specification sections apply to work of this section.

#### 1.2 SUMMARY

- .1 Section Includes
  - .1 Acoustical ceiling panel
  - .2 Wire hangers, fasteners, main runners, cross tees, and wall angle moldings
  - .3 Perimeter Trim
- .2 Related Sections
  - .1 Section 09 51 13 - Acoustical Panel Ceilings
  - .2 Section 09 22 00 - Gypsum Board Assemblies
  - .3 Section 09 22 16 - Non-Structural Metal Framing
  - .4 Division 26 - Electrical
- .3 Alternates
  - .1 Prior Approval: Unless otherwise provided for in the Contract documents, submit proposed product substitutions no later than TEN (10) working days prior to the date established for receipt of bids. Acceptability of a proposed substitution is contingent upon the Architect's review and acceptance. Approved products will be set forth by the Addenda. If a substitution is included in a Bid and is not approved by an Addendum, the specified products shall be provided as in place of the substitute without additional compensation.
  - .2 Submittals that do not provide adequate data for the product evaluation will not be considered. The proposed substitution must meet all requirements of this section, including but not necessarily limited to, the following: Single source materials suppliers (if specified in Section 1.5); Underwriters' Laboratories Classified Acoustical performance; Panel design, size, composition, color, and finish; Suspension system component profiles and sizes; Compliance with the referenced standards.

#### 1.3 REFERENCES

- .1 American Society for Testing and Materials (ASTM):
  - .1 ASTM A 1008 Standard Specification for Steel, Sheet, Cold Rolled, Carbon, Structural, High-Strength Low-Alloy and High-Strength Low-Alloy with Improved Formability
  - .2 ASTM A 641 Standard Specification for Zinc-Coated (Galvanized) Carbon Steel Wire
  - .3 ASTM A 653 Standard Specification for Steel Sheet, Zinc-Coated (Galvanized) by the Hot-Dip Process
  - .4 ASTM C 645 Standard Specification for Metal Suspension Systems
  - .5 ASTM C 636 Recommended Practice for Installation of Metal Ceiling Suspension Systems for Acoustical Tile and Lay-in Panels

### Integrated Ceiling Assemblies (BH4)

---

- .6 ASTM C754 AND C1858 All installations should be in compliance with these tests.
  - .7 ASTM D 3273 Standard Test Method for Resistance to Growth of Mold on the Surface of Interior Coatings in an Environmental Chamber
  - .8 ASTM E 84 Standard Test Method for Surface Burning Characteristics of Building Materials
  - .9 ASTM E 580 Installation of Metal Suspension Systems in Areas Requiring Moderate Seismic Restraint
  - .10 ASTM C 423 Sound Absorption and Sound Absorption Coefficients by the Reverberation Room Method
  - .11 ASTM E 1414 Standard Test Method for Airborne Sound Attenuation between Rooms Sharing a Common Ceiling Plenum
  - .12 ASTM E 1264 Classification for Acoustical Ceiling Products
  - .13 ASTM E3090 All references to suspension component property testing per this test method.
  - .2 B. International Building Code
  - .3 C. ASHRAE Standard 62.1-2004, Ventilation for Acceptable Indoor Air Quality
  - .4 D. NFPA 70 National Electrical Code
  - .5 E. ASCE 7 American Society of Civil Engineers, Minimum Design Loads for Buildings and Other Structures
  - .6 International Code Council-Evaluation Services - AC 156 Acceptance Criteria for Seismic Qualification Testing of Non-structural Components
  - .7 International Code Council-Evaluation Services Report - Seismic Engineer Report
    - .1 1. ESR 1289 - Armstrong Suspension Systems
  - .8 California Department of Public Health CDPH/EHLB Emission Standard Method Version 1.2 2017
  - .9 International Well Building Standard
  - .10 Mindful Materials
  - .11 Living Building Challenge
- 1.4 SYSTEM DESCRIPTION**
- .1 Continuous/Wall-to-Wall or Cloud installation
- 1.5 SUBMITTALS**
- .1 Shop Drawings: Layout and details of ceilings. Show locations of items that are to be coordinated with, or supported by the ceilings.
  - .2 Installation Instructions: Submit manufacturer's installation instructions as referenced in Part three, Installation.
  - .3 Product Data: Submit manufacturer's technical data for each type of ceiling unit and suspension system required.
  - .4 Samples: Minimum 6 x 6 inch samples of specified panel; 8 inch long samples of exposed wall molding and suspension system, including main runner and 4 foot cross tees.
  - .5 Certifications: Manufacturer's certifications that products comply with specified requirements, including laboratory reports showing compliance with specified tests and standards.



### Integrated Ceiling Assemblies (BH4)

---

- .6 Non-Conformance: All products not conforming to the requirements of this specification and or the manufacturer's published values are to be disposed. The Contractor performing the work will replace with approved product at their expense.

#### 1.6 QUALITY ASSURANCE

- .1 Single-Source Responsibility: Provide acoustical panel units and grid components by a single manufacturer.
- .2 Fire Performance Characteristics: Identify acoustical ceiling components with appropriate markings of applicable testing and inspecting organization.
- .3 Surface Burning Characteristics: As follows, tested per ASTM E 84 and complying with ASTM E 1264 Classification.
- .4 Acoustical Panels: As with other architectural features located at the ceiling that may obstruct or skew the planned fire sprinkler pattern through possibly delay or accelerate the activation of the sprinkler or fire detection systems by channeling heat from a fire either toward or away from the device. Designers and installers are advised to consult a fire protection engineer, NFPA 13, or their local codes for guidance where automatic fire detection and suppression systems are present.
- .5 Coordination of Work: Coordinate acoustical ceiling work with installers of related work including, but not limited to building insulation, gypsum board, light fixtures, mechanical systems, electrical systems, and sprinklers. ACOUSTIBuilt Panels are 7/8" thick.
- .6 Installer Qualification: Subcontractor is an experienced Installer that has reviewed and understands the system installation instructions thoroughly. Subcontractor will follow written installation instructions and utilize approved equipment and procedures for finishing installation.
- .7 ACOUSTIBuilt is finished to a level 4 drywall finish equivalent. Installing ACOUSTIBuilt requires special attention to finishing details. Light coves and low angle lighting will exaggerate imperfections. Mock-ups and hands-on training are strongly recommended.

#### 1.7 DELIVERY, STORAGE AND HANDLING

- .1 Deliver acoustical ceiling units to project site in original, unopened packages/crates and store them in a fully enclosed space where they will be protected against damage from moisture, direct sunlight, surface contamination, and other causes.
- .2 Before installing acoustical ceiling units, permit them to reach room temperature and a stabilized moisture content. Store all material within temperature limits required by manufacturer.
- .3 Handle acoustical ceiling units carefully to avoid chipping edges or damaged units in any way.

#### 1.8 PROJECT CONDITIONS

- .1 Space Enclosure:  
.1 Building areas to receive ceilings shall be free of construction dust and debris. ACOUSTIBuilt panels should be installed in areas where the building is enclosed and the HVAC is continuously functioning. This product is not recommended for exterior applications, where standing water is present, or where moisture will come into direct contact with the ceiling.

### Integrated Ceiling Assemblies (BH4)

---

- .1 HVAC should be designed, installed, and operated in accordance with ASHRAE Standard 62.1. It is also necessary for the area to be enclosed, for the HVAC systems to be functioning, and in continuous operations for the life of the product. Product is not intended for use where natural ventilation is part of the ventilation strategy and not recommended in areas where a differential plenum pressure exists.

## 1.9 WARRANTY

- .1 Acoustical Panel: Submit a written warranty executed by the manufacturer, agreeing to repair or replace panels that fail within the warranty period. Failures include, but are not limited to the following:
  - .1 Acoustical Panels: Manufacturer's defects in material
  - .2 Grid System: Rusting and manufacturer's defects
- .2 Warranty Period:
  - .1 Acoustical panels: Ten (10) years from date of substantial completion
  - .2 Suspension: Ten (10) years from date of substantial completion
- .3 The Warranty shall not deprive the Owner of other rights the Owner may have under other provisions of the Contract Documents and will be in addition to and run concurrent with other warranties made by the Contractor under the requirements of the Contract Documents.

## Part 2 Products

### 2.1 MANUFACTURERS

- .1 Basis of Design ACOUSTIBuilt:
  - .1 Armstrong World Industries, Inc.
- .2 Finish
  - .1 Joint Compound Finish by Others
  - .2 Spray Applied Finish by Armstrong World Industries, Inc.
- .3 Suspension Systems
  - .1 Armstrong World Industries, Inc.
- .4 Perimeter Trim Systems
  - .1 Armstrong World Industries, Inc.
- .5 Soffit Construction
  - .1 Armstrong World Industries, Inc. Drywall Grid SimpleSoffit™

### 2.2 ACOUSTICAL CEILING UNITS

- .1 Acoustical Panels
  - .1 Surface Texture: Fine
  - .2 Composition: Mineral Fiber
  - .3 Color: White (Fine Texture Finish for ACOUSTIBuilt panels), Black (Fine Texture Finish for ACOUSTIBuilt panels)
  - .4 Custom Colors: Available in all colors tones
  - .5 Size: 48 in x 72 in x 7/8 in - Item #2604
  - .6 Edge Profile: Tapered edges four sides
  - .7 Noise Reduction Coefficient (NRC): ASTM C 423; Panel 0.80 (UL)
  - .8 Ceiling Attenuation Class (CAC): ASTM C 1414; Panel 46 (UL), System up to 48

Integrated Ceiling Assemblies (BH4)

---

- .9 Sabin: Cloud Applications: 0.80 Sabins/SF & 1.33 Sabins/SF with infill item 8200T10
- .10 Flame Spread: ASTM E 1264; Class A
  - .1 Light Reflectance (LR) White Panel: ASTM E 1477; 0.87
  - .2 Dimensional Stability: HumiGuard Plus
  - .3 Recycle Content: Post-Consumer and Pre-Consumer – up to 75%
  - .4 Material Ingredient Transparency: Health Product Declaration (HPD); Declare Label
  - .5 Life Cycle Assessment: Third Party Certified Environment Product Declaration (EPD)
  - .6 Acceptable Product: ACOUSTIBuilt panels #2604 No added formaldehyde as manufactured by Armstrong World Industries
  - .7 Contact your local Armstrong Representative for required installation training at least 4-6 weeks before ordering materials and scheduling installation.
- .2 Finish
  - .1 Joint Compound
    - .1 Setting Compound: Lightweight setting-type drywall joint compound, Ultra lightweight drying-type drywall joint compound
    - .2 Joint Tape: Self-Adhesive mesh drywall joint tape (Panel to Panel)
    - .3 Use Setting Type Compound for initial coats and use Drying Type Compound for final coats per the installation instructions. DO NOT use any other type of drywall compound such as All-Purpose Compound.
    - .4 Paper tape at the wall intersection
  - .2 Spray Applied Finish – Required Product: #2605WH or 2605BL Fine Texture Finish for ACOUSTIBuilt panels – White as manufactured by Armstrong World Industries.
- .3 Suspension Systems
  - .1 Armstrong Drywall Suspension Systems all main beams and cross tees shall be commercial quality hot-dipped galvanized steel
    - .1 Main beam: manufactured main beam- 1-1/2" knurled face with ScrewStop™ reverse hem by 1-11/16 inches high. Drywall Main Beams are factory punched with cross tee routs, hanger wire holes, and SuperLock™ main beam clip for a strong secure connection and fast accurate alignment. Drywall Main Beams are Heavy-duty performance per ASTM C635
    - .2 HD8906 - 12ft HD Drywall Main Beam 1-1/2 in
  - .2 Cross Tees: manufactured cross tee- 1-1/2" knurled face with ScrewStop™ reverse hem by 1-1/2 inches high with factory punched cross tee routs and hanger wire holes and XL stake on clip for a strong secure connection.
    - .1 XL8945P - 4ft Drywall Cross Tee
  - .3 Wall Molding:
    - .1 KAM12 - 12ft Knurled Angle Molding 1-1/4" Face

### Integrated Ceiling Assemblies (BH4)

---

- .4 Hanger wire: a Class 1 zinc coating, soft temper, pre-stretched, with a yield stress load of at least time three times the design load, but not less than 12-gauge.
- .5 Fasteners (for Panel attachment)
  - .1 #6 x 1-5/8" Fine thread drywall screws
  - .2 Recommended Adhesives: Loctite PL Premium Polyurethane Construction Adhesive, OSI F38 Drywall Panel Adhesive.
- .6 Perimeter Systems
  - .1 Commercial quality extruded aluminum alloy 6063 trim channel, factory finished in baked polyester paint. Commercial quality galvanized steel unfinished T-bar connection clips; galvanized steel splice plates.
  - .2 Color: White
  - .3 Size: 120 in X 4 in (also available in 6")
  - .4 Recycle Content: Post-Consumer - 50% Pre-Consumer - 0%
  - .5 Acceptable Product: AXIOM One Piece for Drywall, 4in Straight – AX1PC4STR or Curved AX1PC4CUR as manufactured by Armstrong World Industries
  - .6 Axiom Trim Channel:
    - .1 AX1PC4CUR 4IN One –Piece Drywall Trim
  - .7 Axiom Accessories:
    - .1 AXSPLICE - Splice Plate
- .4 Material Ingredient Transparency: Health Product Declaration (HPD); Declare Label
- .5 Life Cycle Assessment: Third Party Certified Environmental Product Declaration (EPD)

### Part 3 Execution

#### 3.1 DESCRIPTION

- .1 Prior to installation, contact your Armstrong Installation Systems Specialist (ISS). Before installation, inspect previous work of all other trades. Verify that all work is complete and accurate to the point where this installation may properly proceed in strict accordance with framing shop drawings.
- .2 If framing preparation is the responsibility of another installer, notify Architect of unsatisfactory preparation before proceeding.
- .3 The system installation is similar to a conventional drywall installation. However, there are key differences in both material substrate and methods of finishing and installation that make this system unique. Installers should review and follow all written directions of the installation instructions and view the installation video. <https://www.armstrongceilings.com/commercial/en/commercial-ceilings-walls/acoustibuilt-ceiling-panels.html#!video=6034280272001>
- .4 Installation: In accordance with all approved plans, details, and manufacturer's installation guidelines located in the Armstrong ACOUSTIBuilt Assembly and Installation Instructions (BPLA-299099) [Click to follow to ACOUSTIBuilt Installation Instructions](#), and Drywall Grid Systems Hanging and Framing Flat Ceilings Installation Guides (BPCS3539)

## Integrated Ceiling Assemblies (BH4)

---

- .5 [Click to follow to Hanging and Framing Flat Drywall Instructions](#). Install seismic components if required by the building code. Seismic components to be specified on the architectural plans by the project engineer or design team.
  - .1 Suspend main beam from overhead construction with hanger wires spaced 4-0 ft. on center along the length of the main runner. Install hanger wires plumb and straight.
  - .2 48" Cross tees shall be installed 16" on center. Extra cross tees are required at 72" every 12'. All 4 panel edges must be supported by a grid main or tee.
  - .3 Install wall moldings/perimeter trim at intersection of suspended ceiling and vertical surfaces
  - .4 Main runners and cross tees shall be attached at perimeter conditions
  - .5 When determining the grid layout, consider the long edges of the boards must run parallel with the mains.
  - .6 This system relies on a square grid system to ensure panel edges align at centers of cross tees. If the installation does not meet these squareness requirements, the panel edges may run off the grid system.
    - .1 The system must be square to within 1/8" over a 48" x 48" module.
    - .2 The suspension system must be leveled to within 1/4" in 10'.
  - .7 Floating perimeters must be trimmed with either Axiom® One-Piece Drywall Trim or Axiom® Classic with Bottom Trim for ACOUSTIBuilt™. Refer to the installation instructions for integration with ACOUSTIBuilt installations.
  - .8 Install access doors where plenum access is required. Refer to the RCP for the location)

### 3.2 PREPARATION

- .1 Do not proceed with installation until all wet work such as concrete, terrazzo, plastering and painting has been completed and thoroughly dried out, unless expressly permitted by manufacturer's printed recommendations.
- .2 Coordination: Furnish layouts for preset inserts, clips, and other ceiling anchors whose installation is specified in other sections.
- .3 Furnish concrete inserts and similar devices to other trades for installation well in advance of time needed for coordination of other work.

### 3.3 INSTALLATION

- .1 Follow manufacturer installation instructions. Armstrong ACOUSTIBuilt Assembly and Installation Instructions (BPLA-299099) [Click to follow to ACOUSTIBuilt Installation Instructions](#) Check
- .2 Control joints are required following the standards used for gypsum board listed in ASTM C840, Section 20
  - .1 Ceilings with perimeter relief cannot exceed 50 LF and 2500 SF between control joints
  - .2 Ceilings without perimeter relief cannot exceed 30 LF and 900 SF between control joints
- .3 Panel joints and fasteners are finished with tape and compound to create a flat surface. While the materials used to finish ACOUSTIBuilt panels are also used to finish drywall, the procedure has unique requirements.

### Integrated Ceiling Assemblies (BH4)

---

- .4 Joint compound coverage shall be limited to preserve the acoustical performance of the panels. Compound at panel joints shall not exceed 8 inch widths. Compound applied to field fasteners shall not exceed 2 inch by 2-inch areas. All compound shall be smooth and free of tool marks and ridges. Panels are to be finished with taping knives. Production tools, including boxes, are detailed on the installation instructions.
- .5 Sanding and inspection: Throughout the sanding process, inspect the surface frequently for flatness. Direct a light across the ceiling to highlight unevenness that requires attention.
- .6 Fine Texture Finish shall be applied in 4-5 coat process (additional coat may be used to achieve the desired finish) as called out in the installation instructions. Fine Texture Finish for ACOUSTIBuilt is applied in multiple coats, layered to achieve a uniform appearance and acoustical performance. It is strongly encouraged to practice spraying to ensure proper calibration and technique are achieved. Refer to the installation video.
  - .1 ACOUSTIBuilt fine texture finish MUST be sprayed with a Graco Mark V texture system. This equipment properly atomizes the finish for acoustics and aesthetics. Fine texture finish is not intended for use with any other airless paint systems not recommended by Armstrong or to be applied by brush or rolling.
  - .2 See Manufactures installation instructions for correct spray tip, pressure settings for spray system, finish preparation, spray calibration and spray procedure and technique.

#### **3.4 ADJUSTING AND CLEANING**

- .1 To remove soot, dirt, and dust use a vacuum operating at low power with a soft brush or use a dry soot cleaning sponge.
- .2 Clean exposed surfaces of acoustical ceilings, including trim, edge moldings, and suspension members. Comply with manufacturer's instructions for cleaning and touch up of minor finish damage.

**END OF SECTION**

Integrated Ceiling Assemblies (WG1)

---

**Part 1 General**

**1.1 DESCRIPTION OF WORK**

- .1 Work Included: Provide Architectural Components Group, Inc. Wood Grille Backer Series 1 WG1 ceiling or wall system where shown on architectural drawings, and as specified in this specification.

**1.2 QUALITY ASSURANCE**

- .1 Architectural Components Group, Inc. Grille Backer WG1-2450-I wood system for this project shall maintain the quality as instituted by the architect or A.W.I.
- .2 Design Criteria: Manufacture of WG1-2450-I wood Grille Backer shall be installed true and plumb to within manufacturing tolerance of 1/8" within 8' of length.
- .3 Product Construction: Wood shall be kiln dried to 10%. Cracking, checking and warpage of members will not be acceptable.

**1.3 SUBMITTALS**

- .1 Technical Data: Submit manufacturer's data and installation instructions.
- .2 Shop Drawings: Submit 4 copies of shop drawings showing all areas involved, attachment conditions and perimeter circumstances.
- .3 Submittal Sample: Submit 1 product sample for approval by architect.

**1.4 DELIVERY, STORAGE AND HANDLING**

- .1 Material must be stored and installed only in secured ambient environment (humidity min. 25% - max. 55%, temperature not to exceed 86 degrees).
- .2 Windows, doors and all wet-work must be completed before unpacking and installation. Handle carefully to avoid damage.

**1.5 WARRANTY**

- .1 Architectural Components Group, Inc. shall warranty the wood Grille Backer ceiling or wall system against manufacturer's defects up to one year. Changes in finish or dimensions due to ultra violet light, excessive temperature or humidity conditions and/or abuse of any kind shall void any warranties from ACGI.
- .2 Install conditions for the area should remain for the proper occupied conditions of humidity and temperature (humidity min. 25% - max. 55%, temperature not to exceed 86 degrees).
- .3 The contractor shall warranty for one year all work from final acceptance of completed work.

**Part 2 Products**

**2.1 ACCEPTABLE MANUFACTURER**

- .1 Architectural Components Group, Inc. 521 George St. Marshfield, MO 65706
- .2 Phone (417) 869-6777 Fax (417) 869-7888

**2.2 PRODUCT TYPE**

- .1 Product Configuration: Wood Grille Backer system product: WG1-2450-I
  - .1 Nomenclature for product WG1-2450-I
  - .2 WG1 = Grille Backer Series 1

### Integrated Ceiling Assemblies (WG1)

---

- .3 4", 6" 8" O.C. spacing = number of grilles per foot varies as per architectural drawings.
- .4 450 = 4-1/2" deep
- .5 1 = 1-1/2" thick blades
- .2 Grille members shall be provided in CUSTOM CURVED PROFILE panel lengths of small, medium and large grille (as per architectural drawings).
- .3 Wood Grille assembly: Factory-assembled custom RADIUS backers, O.C. spacing to be specified through shop drawings.
- .4 Finish: Wood finish shall utilize ACGI clear finish with satin sheen or specify custom stain to match architect sample. Back of planks shall be factory sealed.
- .5 Wood specie shall be Plain Sliced Book-Matched Maple, veneer. NOTE: Veneered grilles shall have matching edge banding on one long edge.
- .6 NAUF: If veneer, the substrate material shall or shall not be manufactured with no added urea formaldehyde.
- .7 Fire Rating: Grilles shall achieve a Class I(A) fire rating.
- .8 Attachment System: Grille Backer Wood Wall and Ceiling System shall be suspended according to manufacturers suggested method of suspension as per the design details provided in the plans.

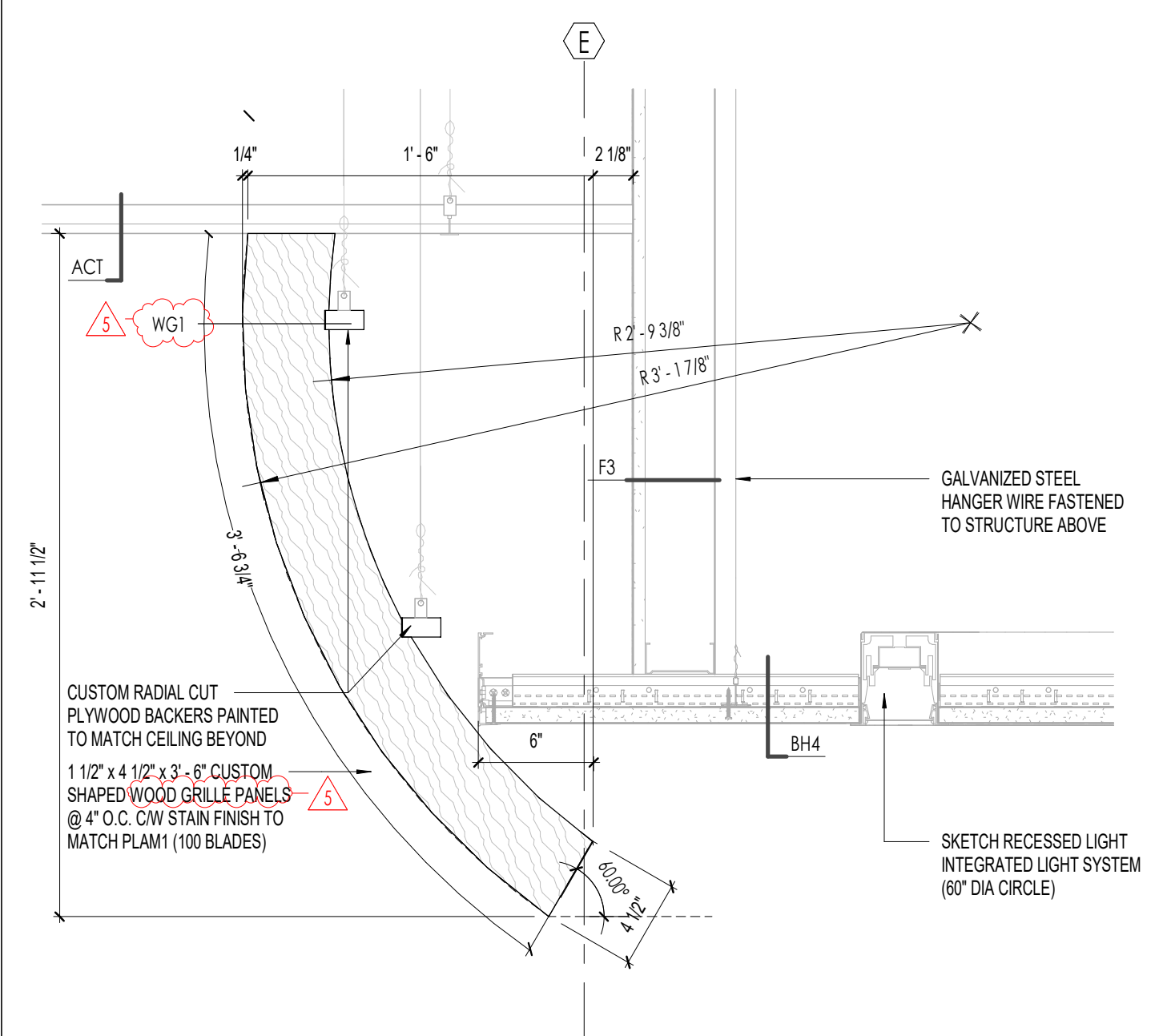
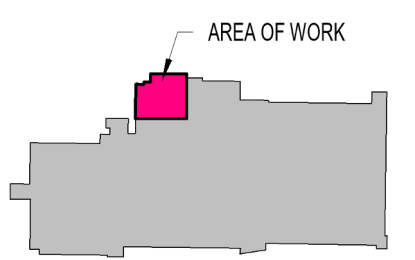
#### **Part 3 Execution**

##### **3.1 INSTALLATION**

- .1 Wood Grille Backer ceiling or wall system shall be handled and installed with care in order to prevent surface and structure damage. Field cutting shall be kept to a minimum and performed as recommended by manufacturer.
- .2 The ceiling system shall be suspended PER Manufacturers Instructions.
- .3 Contractor shall clean all panels prior to installation according to manufacturer's recommended maintenance procedures. Upon completion of installation, panels shall be inspected and cleaned as needed.

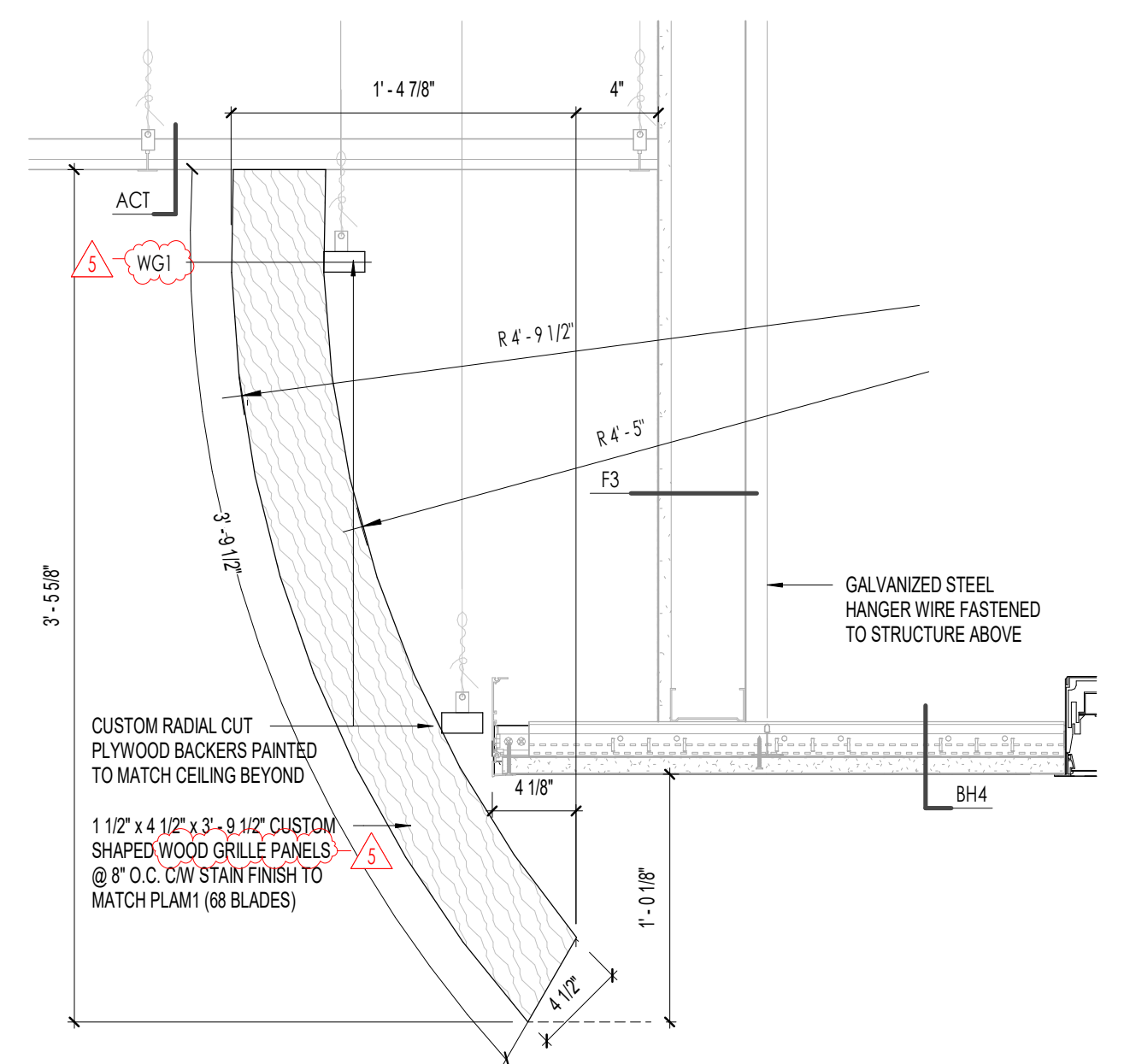
**END OF SECTION**





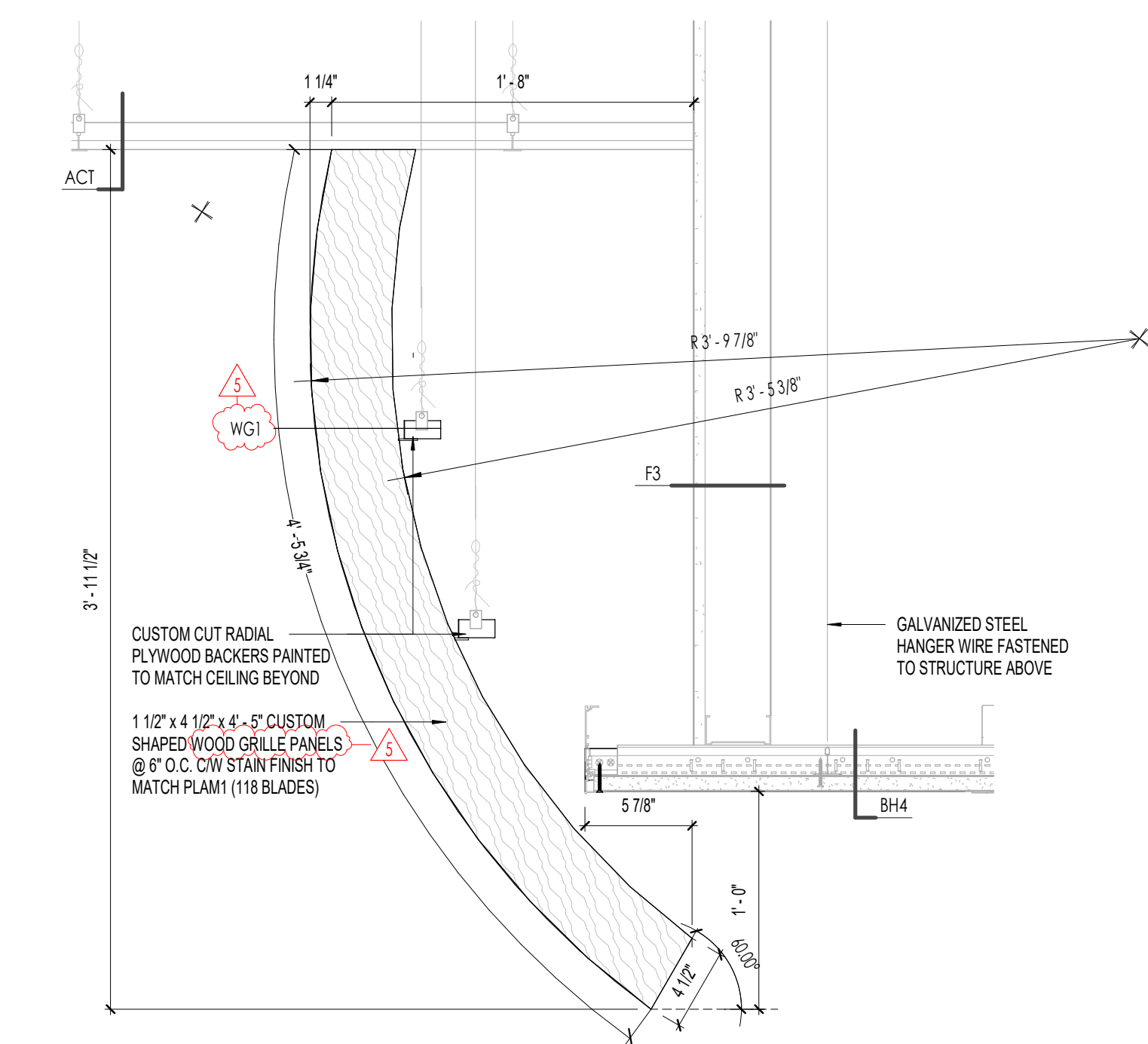
C1 SMALL WOOD BLADE DETAIL

A230 Scale: 1 1/2" = 1'-0"



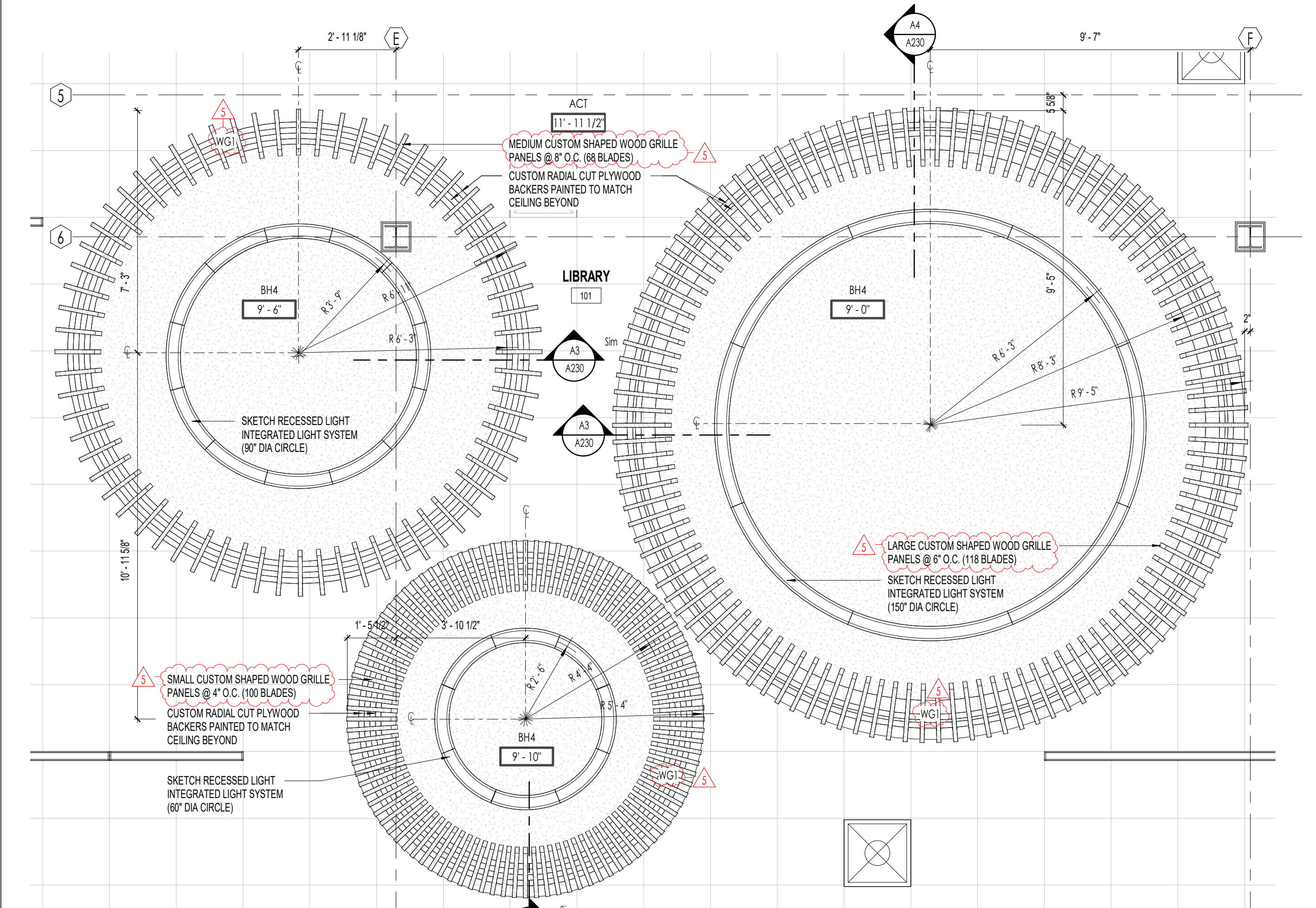
C2 MEDIUM WOOD BLADE DETAIL

A230 Scale: 1 1/2" = 1'-0"



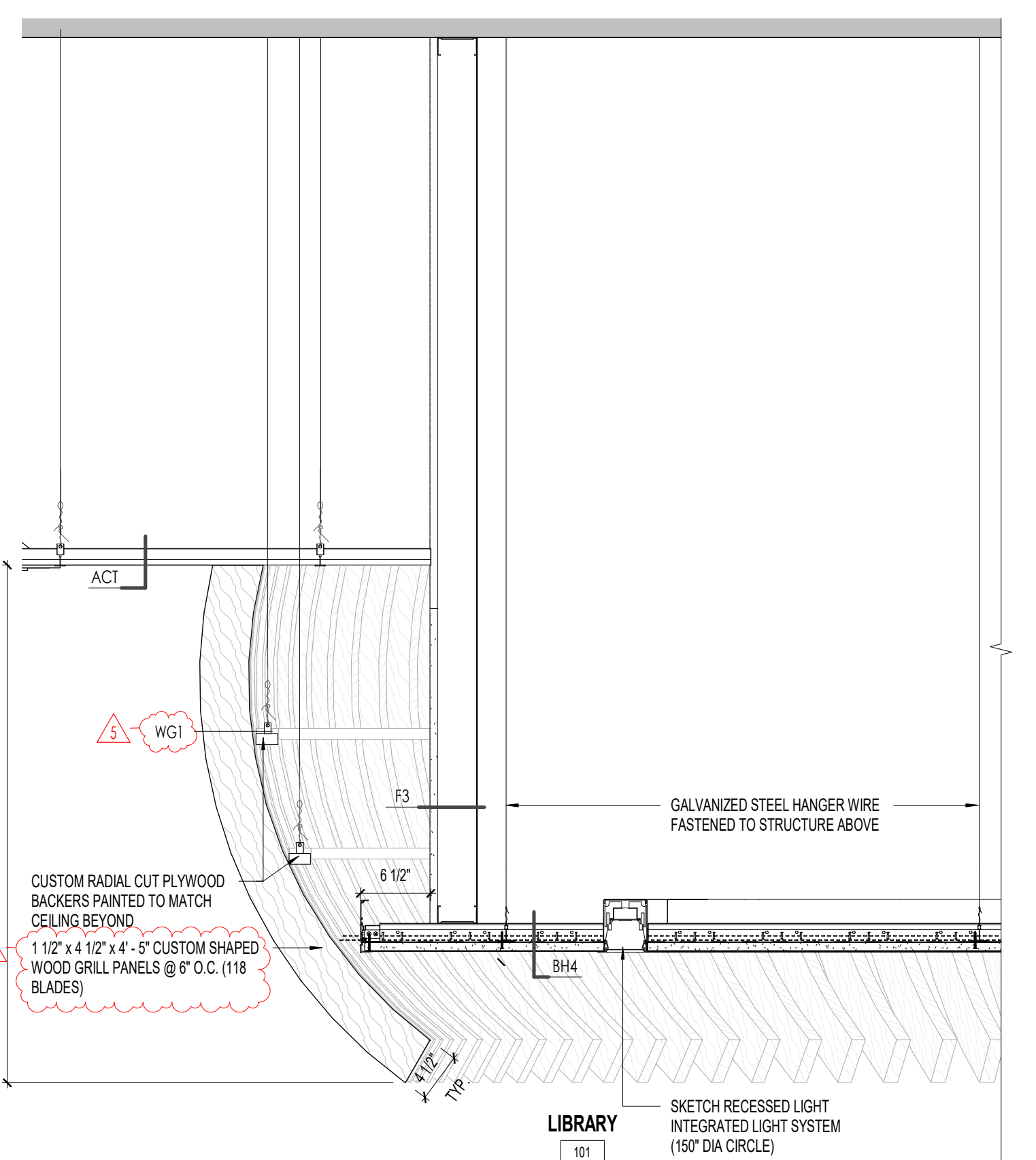
C3 LARGE WOOD BLADE DETAIL

A230 Scale: 1 1/2" = 1'-0"



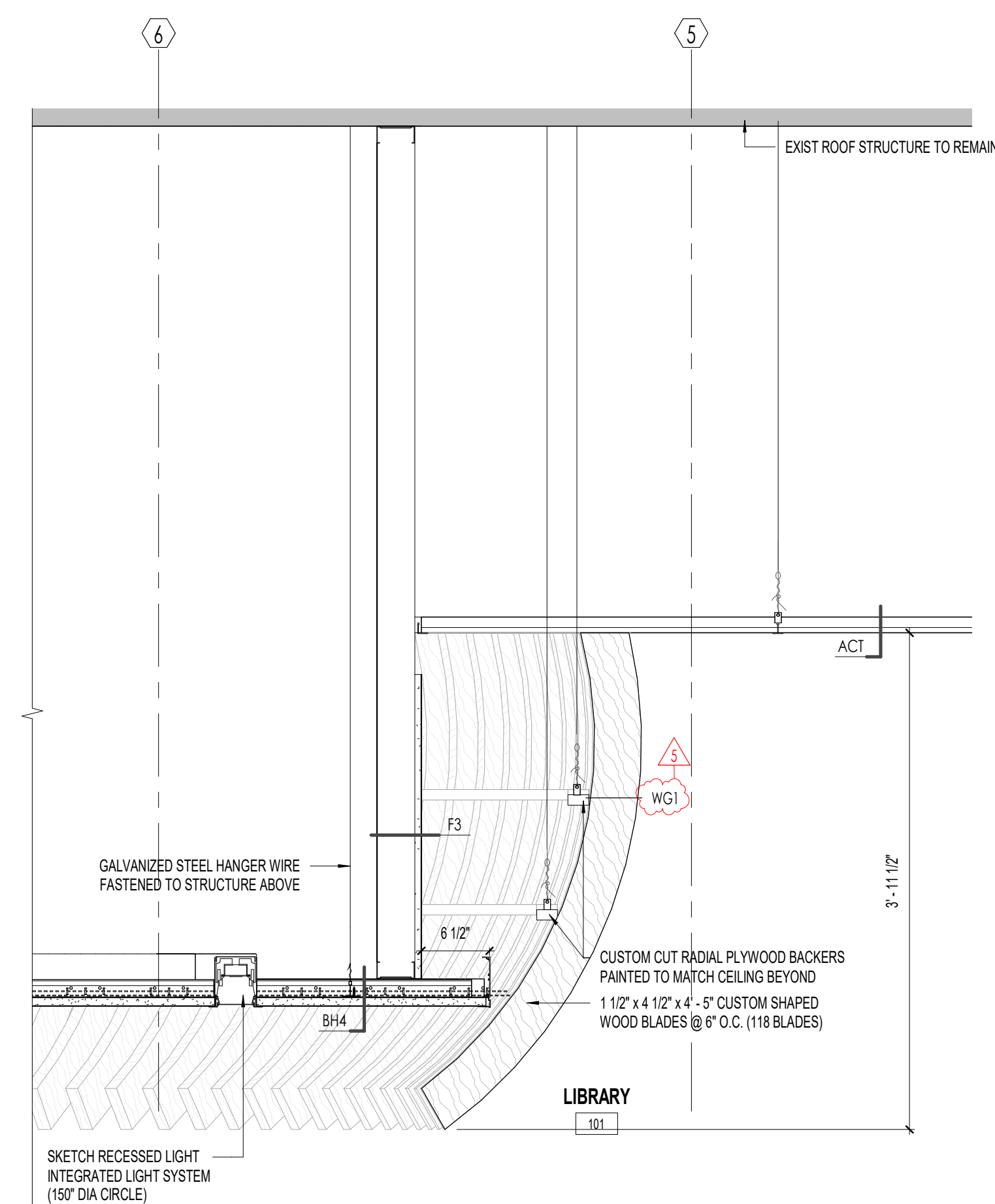
A1 ENLARGED REFLECTED CEILING PLAN DETAIL - THE NEST

A230 Scale: 3/8" = 1'-0"



A3 SECTION DETAIL

A230 Scale: 1" = 1'-0"



A4 SECTION DETAIL

A230 Scale: 1" = 1'-0"

5	2024-10-02	ADDENDUM 001	BP
4	2024-09-18	IFT	SW, HR, BP
1	2024-05-22	PERMIT	HR, SW
NO.	DATE	ISSUED FOR:	BY:

THE CONTRACTOR SHALL CHECK AND VERIFY ALL DIMENSIONS, DATUMS AND LEVELS PRIOR TO COMMENCEMENT OF WORK. ALL DIMENSIONS AND DATUMS TO BE REFERRED TO IN THIS DRAWING ARE TO BE CHECKED BEFORE PROCEEDING.

ALL DIMENSIONS SPECIFICATION AND RELATED DOCUMENTS ARE THE COPYRIGHT PROPERTY OF THE ARCHITECT AND MUST BE KEPT IN THE ARCHITECT'S OFFICE. REPRODUCTION OF DRAWINGS, SPECIFICATIONS AND RELATED DOCUMENTS IN PART OR WHOLE IS FORBIDDEN WITHOUT THE ARCHITECT'S WRITTEN PERMISSION.

THIS DRAWING IS NOT TO BE USED FOR BUILDING PURPOSES UNLESS AUTHORIZED BY THE ARCHITECT.

SEAL:



300-1108 Dundas St.  
London, ON N6H 3A7  
519-601-6274  
info@matterinc.ca  
mca@matterinc.ca

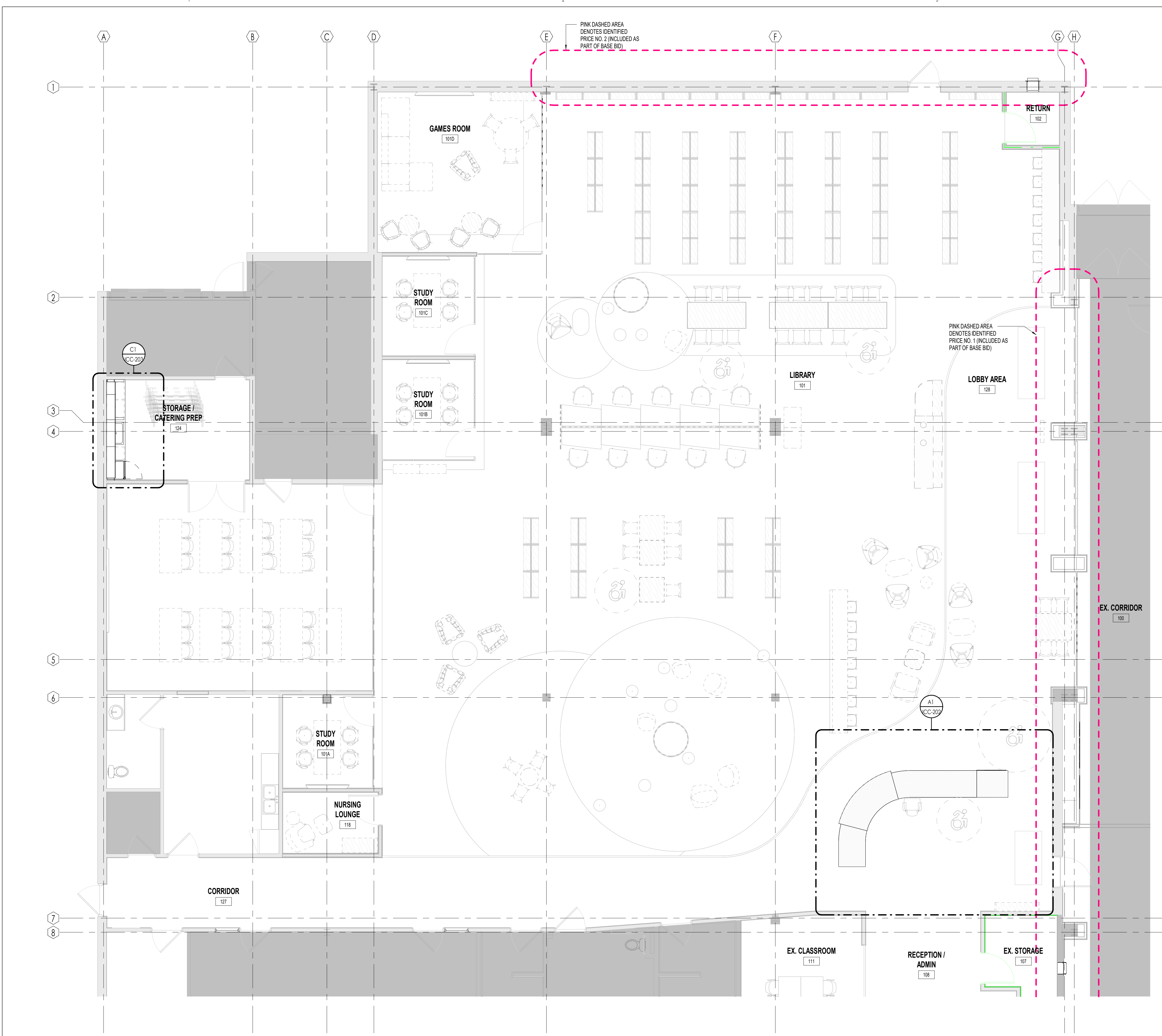
Project Title: SHERWOOD LIBRARY RENOVATION

UHC PROJECT NO.: Owner  
1225 Wonderland Rd N, London, ON N6G 2W9

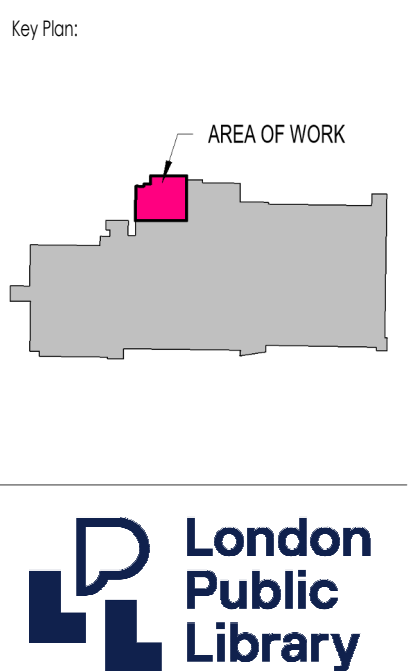
Sheet Name: CEILING DETAILS

Scale: As indicated  
Project No: 23-006  
Sheet No:

A230



MILLWORK FINISH LEGEND		
MILLWORK FINISHES:		
SS1	SOLID SURFACE - WILSONART (OR APPROVED EQUAL) ASPEN QUARTZITE (9245SS)	
PLAM1	LAMINATE - FORMICA (OR APPROVED EQUAL) SWEDEN RIFT OAK - OILED WOOD FINISH (8676-26)	
PLAM2	LAMINATE - FORMICA (OR APPROVED EQUAL) RECYCLED BLACK	



NO. DATE ISSUED FOR: BY:

4 2024-09-18 IFT SW, HR  
 2 2024-06-25 LANDLORD WORK SW  
 1 2024-05-22 PERMIT HR, SW

THE CONTRACTOR SHALL CHECK AND VERIFY ALL DIMENSIONS, DATUMS AND ELEVATIONS FOR CONFORMANCE TO DRAW. ALL ERRORS AND OMISSIONS TO BE REPORTED TO THE ARCHITECT BEFORE PROCEEDING.  
 THE DRAWING IS NOT TO BE USED FOR THE PURPOSE OF OBTAINING PERMITS.  
 ALL DRAWINGS, SPECIFICATIONS AND RELATED DOCUMENTS ARE THE COPYRIGHT PROPERTY OF THE ARCHITECT AND MUST BE KEPT IN STRICT CONFIDENCE. REPRODUCTION OF DRAWINGS, SPECIFICATIONS AND RELATED DOCUMENTS IN PART OR WHOLE FOR OTHER THAN THE ARCHITECT'S INTENDED PURPOSES IS PROHIBITED.  
 THE DRAWING IS NOT TO BE USED FOR BUILDING PURPOSES UNLESS AUTHORIZED BY THE ARCHITECT.

SEAL:



300-1108 Dundas St.  
 London, ON N6H 3A7  
 519.601.6274  
 info@matterinc.ca  
 matterinc.ca

Project Title:  
 SHERWOOD LIBRARY RENOVATION


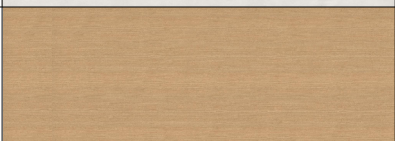
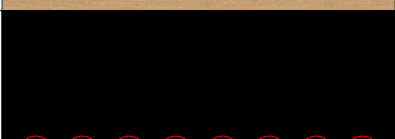
1225 Wonderland Rd N, London, ON N6G 2V9

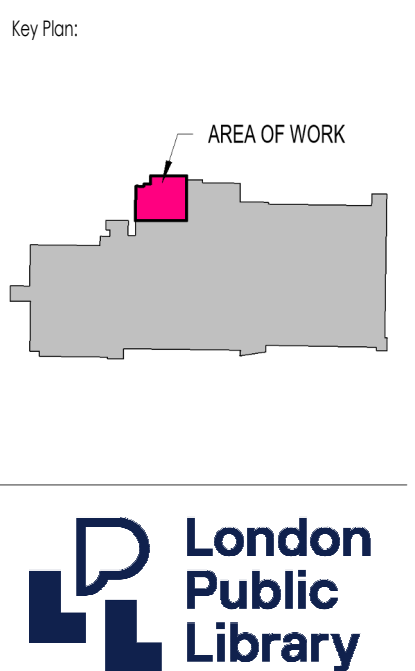
Sheet Name:  
 MILLWORK KEY PLAN - NORTH

Scale:  
 As indicated

Project No:  
 23-006  
 Sheet No:  
 ICC-200

**A1** LEVEL 1 MILLWORK KEY PLAN - NORTH  
 ICC-200 Scale: 3/16" = 1'-0"

MILLWORK FINISH LEGEND		
MILLWORK FINISHES:		
SS1	SOLID SURFACE - WILSONART (OR APPROVED EQUAL) "ASPEN QUARTZITE" (245SS)	
PLAM1	LAMINATE - FORMICA (OR APPROVED EQUAL) "SWEDE RIFT OAK" - OILED WOOD FINISH (8676-26)	
PLAM2	LAMINATE - FORMICA (OR APPROVED EQUAL) "RECYCLED BLACK"	



NO. DATE ISSUED FOR: BY:

4 2024 09 18 IFT SW, HR, BRP  
 2 2024 06 25 LANDLORD WORK SW, HR, SW  
 1 2024 05 22 PERMIT HR, SW

THE CONTRACTOR SHALL CHECK AND VERIFY ALL DIMENSIONS, DATUMS AND ELEVATIONS TO CONFIRMATION TO WORK. ALL DIMENSIONS AND CONDITIONS TO BE REPORTED TO THE ARCHITECT BEFORE PROCEEDING.  
 THE DRAWING IS NOT TO BE USED FOR THE PURPOSE OF BIDDING OR CONTRACTING.  
 ALL DRAWINGS, SPECIFICATIONS AND RELATED DOCUMENTS ARE THE COPYRIGHT PROPERTY OF THE ARCHITECT AND MUST BE KEPT UNDER LOCK AND KEY. REPRODUCTION OF DRAWINGS, SPECIFICATIONS AND RELATED DOCUMENTS IN PART OR WHOLE FOR OTHER THAN THE ARCHITECT'S INTENDED PURPOSES IS PROHIBITED WITHOUT THE WRITTEN PERMISSION OF THE ARCHITECT.

SEAL:



300-1108 Dundas St.  
 London, ON N6H 3A7  
 519.601.6274  
 info@matterinc.ca  
 matterinc.ca

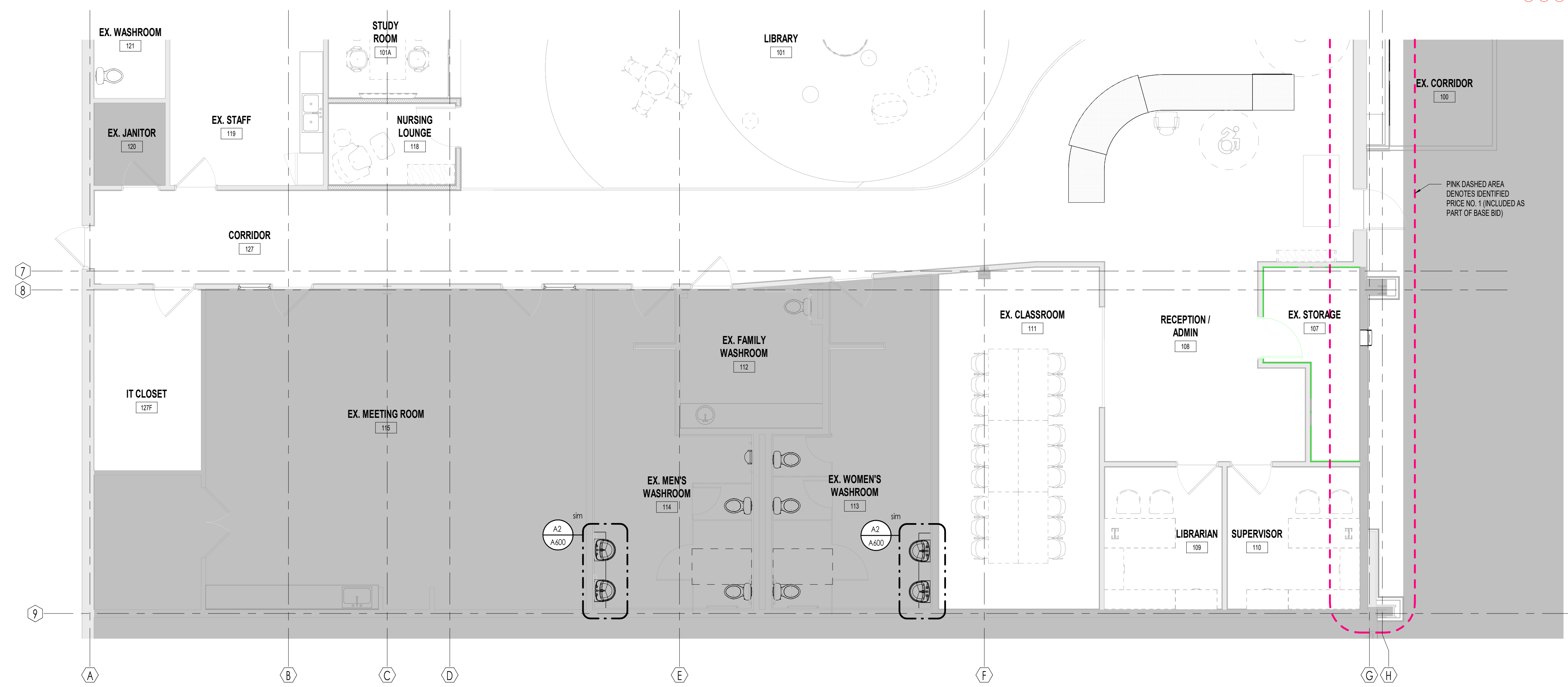
Project Title:  
 SHERWOOD LIBRARY RENOVATION

1225 Wonderland Rd N, London, ON N6G 2W9

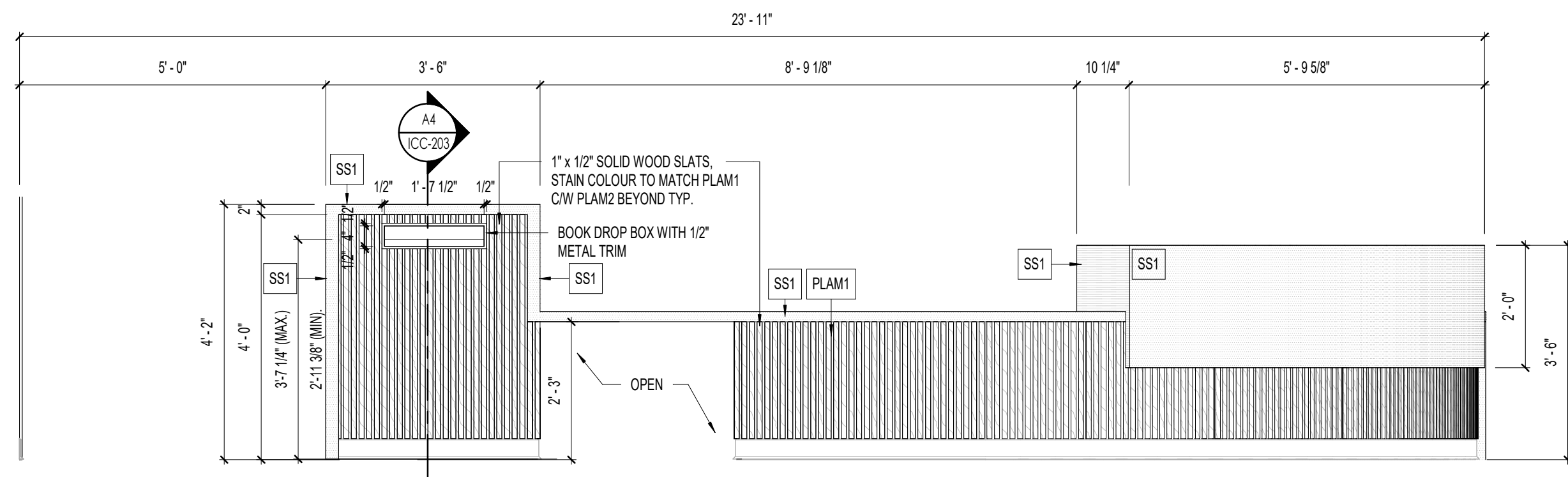
Sheet Name:  
 MILLWORK KEY PLAN - SOUTH

Scale:  
 As indicated

Project No:  
 23-006  
 Sheet No:  
 ICC-201

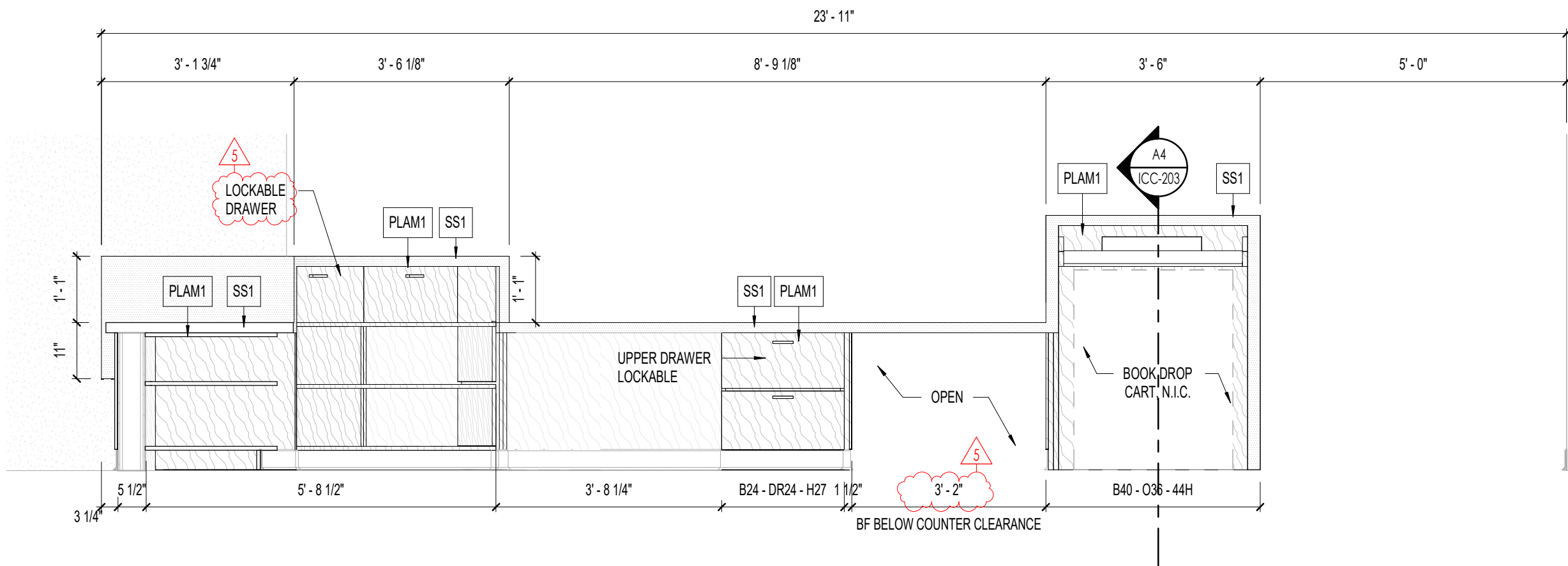


**A1** LEVEL 1 MILLWORK KEY PLAN - SOUTH  
 ICC-201 Scale: 3/16" = 1'-0"



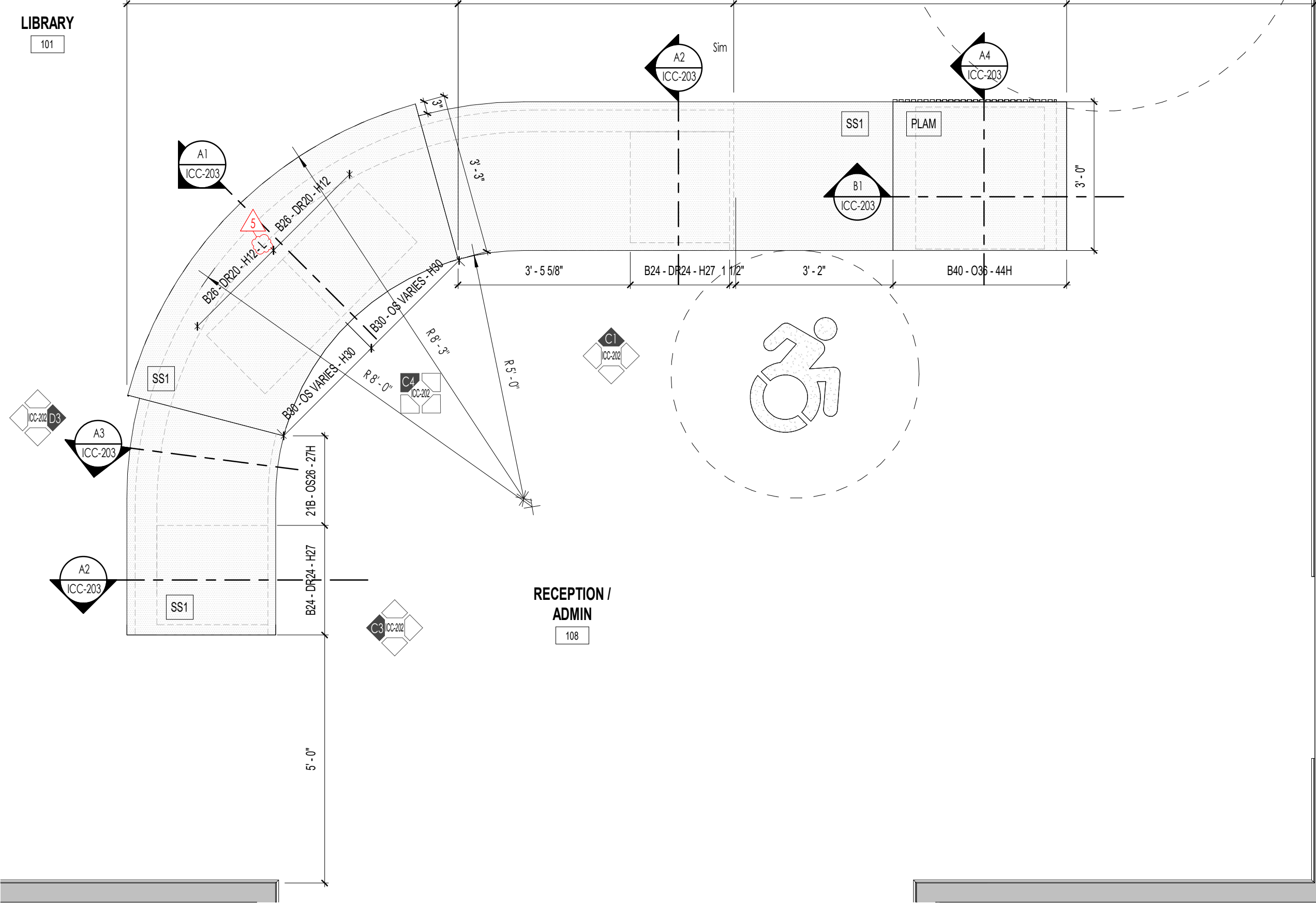
D1 RECEPTION AND ADMIN 108 - MILLWORK ELEVATION

ICC-202 Scale: 1/2" = 1'-0"



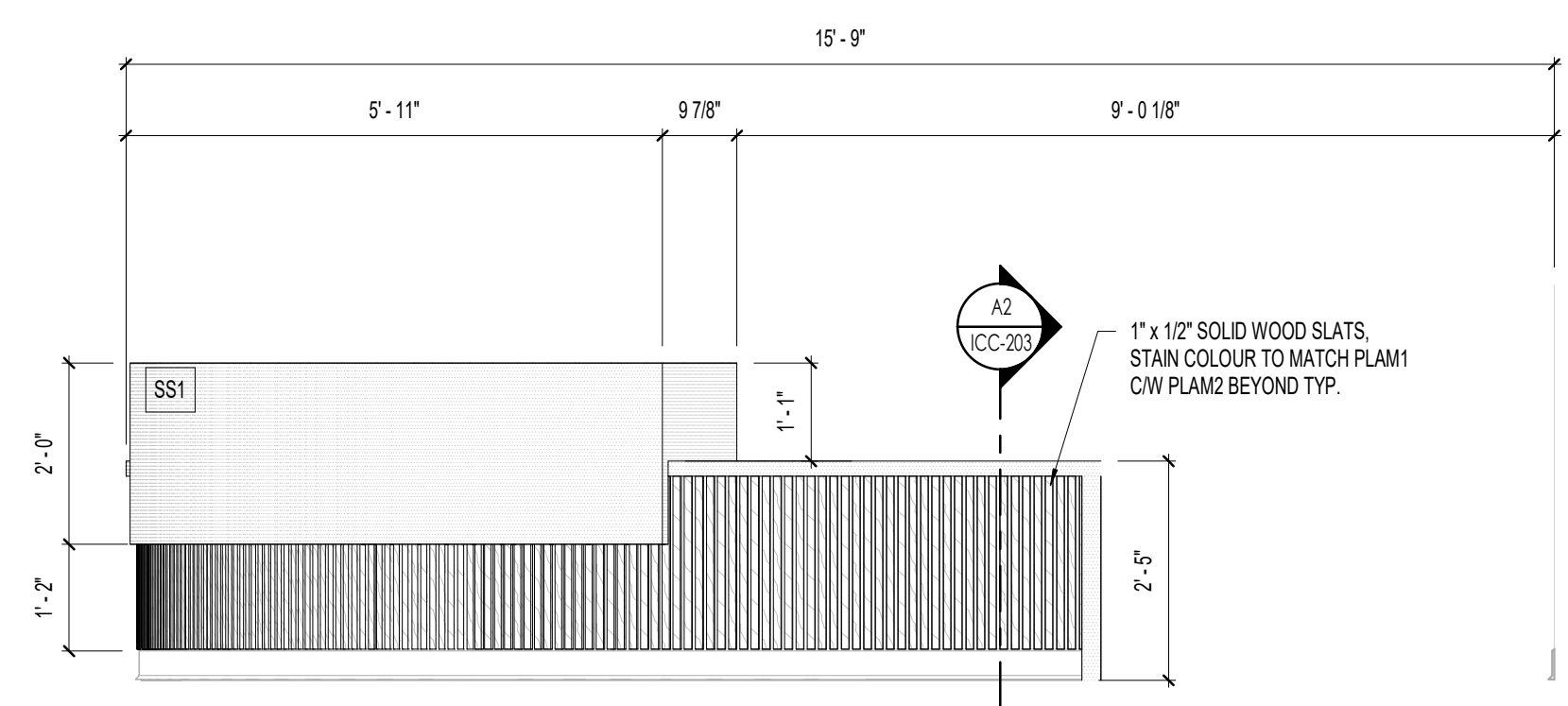
C1 RECEPTION AND ADMIN 108 - MILLWORK ELEVATION

ICC-202 Scale: 1/2" = 1'-0"



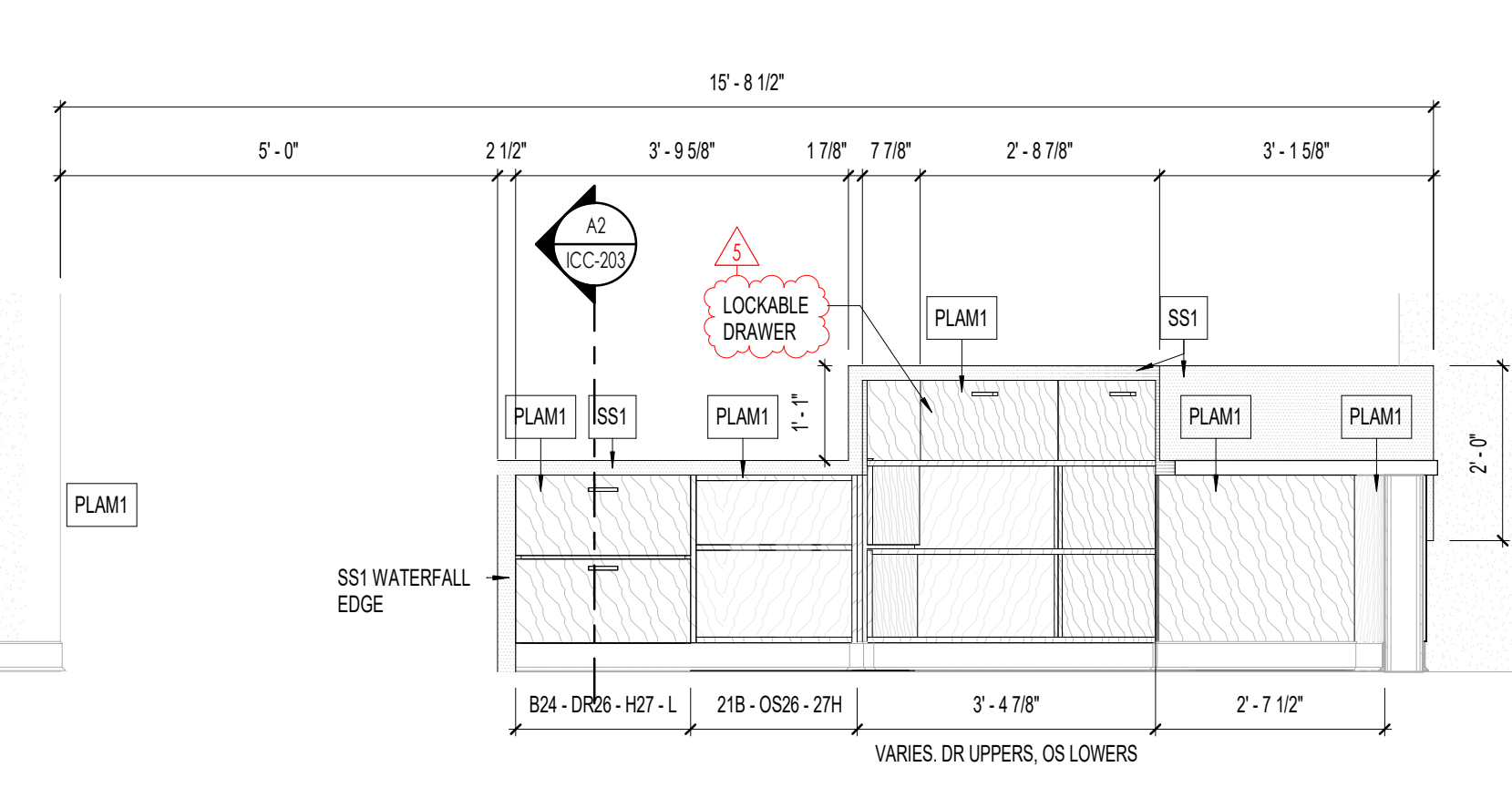
A1 RECEPTION AND ADMIN 108 - MILLWORK PLAN

ICC-202 Scale: 1/2" = 1'-0"



D3 RECEPTION AND ADMIN 108 - MILLWORK ELEVATION

ICC-202 Scale: 1/2" = 1'-0"



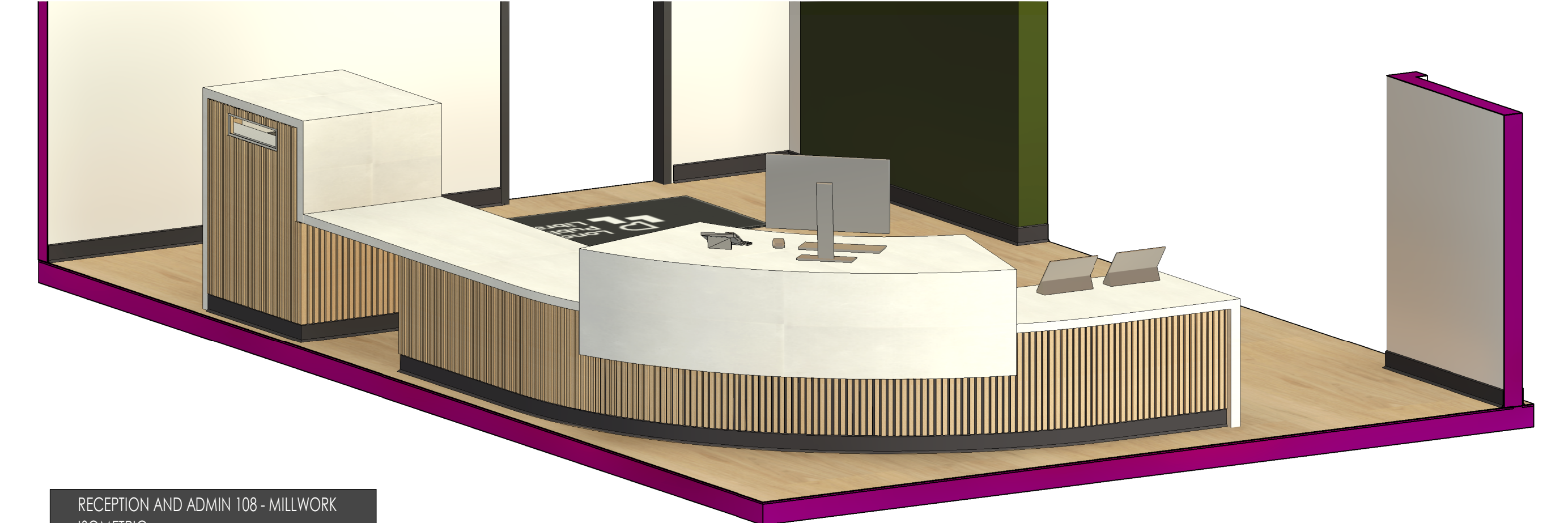
C3 RECEPTION AND ADMIN 108 - MILLWORK ELEVATION

ICC-202 Scale: 1/2" = 1'-0"



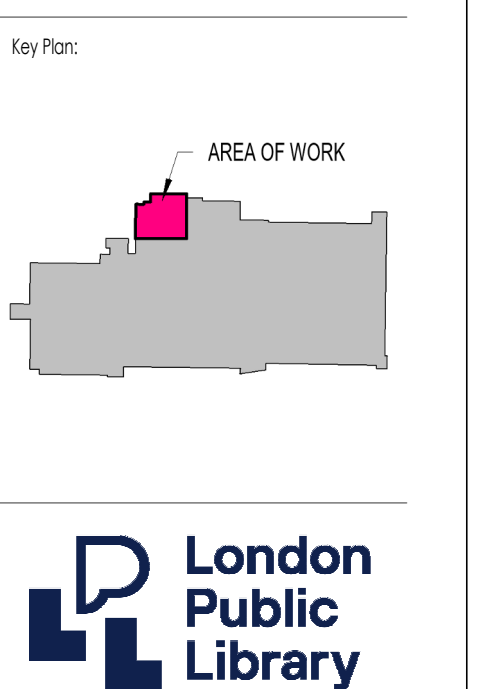
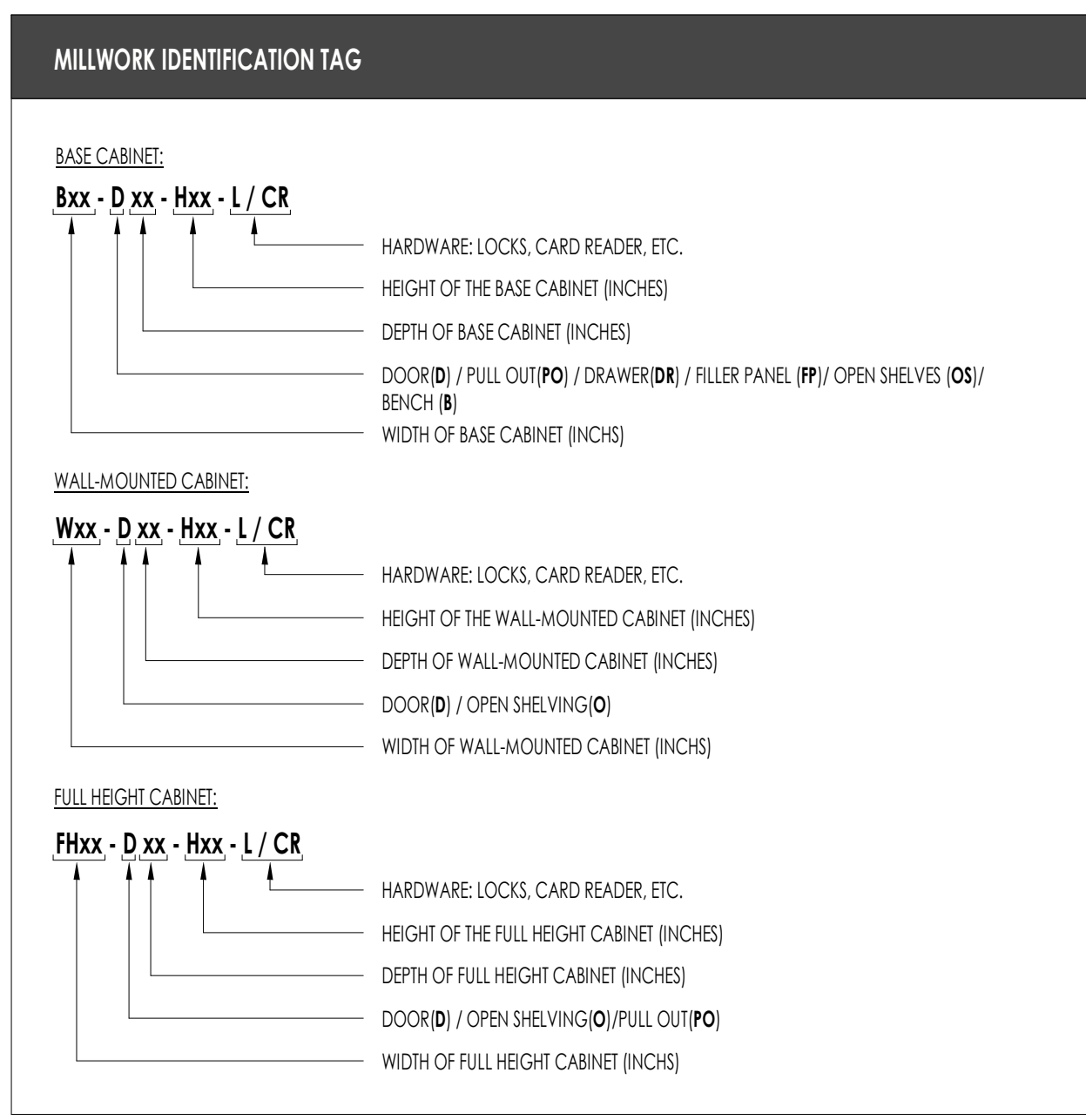
B3 RECEPTION AND ADMIN 108 - MILLWORK ISOMETRIC

ICC-202 Scale:



A3 RECEPTION AND ADMIN 108 - MILLWORK ISOMETRIC

ICC-202 Scale:



5 2024-10-02 ADDENDUM 001  
 4 2024-09-18 IFT  
 1 2024-05-22 PERMIT  
 NO. DATE ISSUED FOR: BY:

THE CONTRACTOR SHALL CHECK AND VERIFY ALL DIMENSIONS, DATUMS AND LEVELS PRIOR TO COMMENCEMENT OF WORK. ALL DIMENSIONS AND CHANGES TO BE REFERRED TO THE ARCHITECT BEFORE PROCEEDING.  
 THE DRAWING IS NOT TO BE USED FOR THE PURPOSE OF OBTAINING DIMENSIONS.  
 ALL DRAWINGS, SPECIFICATIONS AND RELATED DOCUMENTS ARE THE COPYRIGHT PROPERTY OF THE ARCHITECT AND ARE NOT TO BE REPRODUCED OR TRANSMITTED IN ANY FORM OR BY ANY MEANS, ELECTRONIC OR MECHANICAL, INCLUDING PHOTOCOPYING, RECORDING, OR BY ANY INFORMATION STORAGE AND RETRIEVAL SYSTEM, WITHOUT THE ARCHITECT'S WRITTEN PERMISSION.  
 THE DRAWING IS NOT TO BE USED FOR MARKETING PURPOSES AND IS COURTESY OF THE ARCHITECT.

SEAL:



300-1108 Dundas St.  
 London, ON N6H 3A7  
 519.601.6274  
 info@matterinc.ca  
 matterinc.ca

Project Title:  
 SHERWOOD LIBRARY RENOVATION

1225 Wonderland Rd N, London, ON N6G 2V9

Sheet Name:  
 MILLWORK PLANS & ELEVATIONS

Scale:  
 1/2" = 1'-0"

Project No:  
 23-006  
 Sheet No:  
 ICC-202