

Tree Inventory and Arborist Report

Subject Site:

1060 Sandalwood Pkwy W., Brampton ON, L7A 2Z

**CASSIE CAMPBELL
COMMUNITY CENTRE
FIELD HOCKEY DOME**

City File Number: PRE-2023-0128

Prepared By:

**The Urban Arborist Inc.
PO BOX #74525 Humbertown Centre
Etobicoke, ON M9A 5E2
Tel: 416.833.6467
info@theurbanarborist.ca**



ISA Certified Arborist---Robert Rafal Lis---Cert. #ON-1374A

July 22, 2024

INTRODUCTION:

The following Tree Inventory and Arborist Report has been prepared for Landscape Planning Limited. Site location is 1060 Sandalwood Pkwy W., Brampton ON, L7A 2Z.



All trees on the property as outlined were tagged and inventoried and were measured at breast height (1.37m) within the property and beyond 6m. Information gathered was as follows:

1. Tag number
2. Species
3. Diameter at Breast Height (DBH)
4. Crown Radius
5. Health and structural condition rating
6. Reason for poor rating

Health Rating Table

Very Poor < 20%	Tree displays severe dieback of branches, canopy is extremely sparse. May exhibit extreme pathogen infestation or infection. Or tree is dead.
Poor >20% - <40%	Tree displays some dieback. Branches or canopy is sparse with little or no signs of new growth or vigor. Possible pathogen infestation or infection. Foliar canopy is sparse.
Average >40% - <60%	Tree is developing in a manner typical to others in the area. Canopy is full.
Good >60% - <80%	New growth is vigorous as evidenced by stem elongation and color. Canopy is dense.
Very Good >80% - 100%	In addition to the attributes of a good rating, tree is displaying extremely vigorous growth and trunk displays a pattern of vigor cracks or lines.

Structural Rating Table

Very Poor < 20%	Trunk has large pockets of decay, is bifurcated or has a severe lean. Limbs or branches are poorly attached or dead. Possible hazard.
Poor >20% - <40%	Limbs or branches are poorly attached or developed. Canopy is not symmetrical. Trunk has a lean.
Average >40% - <60%	Trunk, limb, and branch development though flawed is typical of this species.
Good >60% - <80%	Trunk is well developed with well attached limbs and branches; some flaws but are hardly visible.
Very Good >80% - 100%	In addition to attributes of a good rating, the tree exhibits a well developed root flare and a balanced canopy.

Factors assessed are as follows:

Trunk

- Cavities
- Mechanical Injury
- Cracks
- Swollen / Sunken Areas
- Insects / Diseases
- Fungi

Foliage / Buds

- Size of Foliage / Buds
- Foliage Colour
- Foliage Injury
- Dieback

Small Branches / Twigs

- Vigour / Growth Rates
- Distribution
- Appearance
- Insects / Disease
- Dieback

Scaffold Branches

- Attachments / Included

Buds / Foliage

- Insects / Disease

Bark

- Taper
- Distribution
- Decay / Cavities
- Deadwood
- Insects / Disease

Roots

- Collar / Flare
- Mechanical Injury
- Girdling Roots
- Insects / Disease
- Decay / Fungi

Guidelines for Preservation:

1. Preserve, Protect & Maintain

Includes protection with tree preservation hoarding, as well as pre- and post-construction arboricultural works.

2. Preserve & Protect

Includes the installation of tree protection hoarding; no maintenance will be required unless stated otherwise.

3. Retain

No protection or maintenance measures are required. Installation of tree protection barriers is optional.

A total of 169 trees have been tagged and inventoried.



THE URBAN ARBORIST INC.
PO BOX # 74525 Humbertown Centre, Etobicoke M9A 5E2
Tel: 416.833.6467 Cell: 647.404.1171
info@theurbanarborist.ca

July 22, 2024

Landscape Planning Limited
95 Mural St #207
Richmond Hill, ON.
L4B 3G2

Re: 1060 Sandalwood Pkwy W., Brampton ON, L7A 2Z
City File Number: PRE-2023-0128

The Urban Arborist Inc attended the subject site on November 21, 2023 and May 3, 2024 to conduct a tree inventory and arborist report of all trees on the subject lot as outlined.

A total of 169 trees were tagged and inventoried. There are 60 trees to be removed and 109 trees to be preserved. See TREE INVENTORY, PRESERVATION & REMOVALS PLAN Drawing TP-1 by Landscape Planning Limited dated April 2024.

Using the City of Brampton Tableland Tree Assessment Guideline, a total of 23 replacement trees will be required to be planted on the site. Compensation for replacement trees with cash-in-lieu of planting will be under the discretion of the City of Brampton.

Attached is the referenced TREE INVENTORY, PRESERVATION & REMOVALS PLAN Drawing TP-1 by Landscape Planning Limited dated April 2024.

Prepared By:

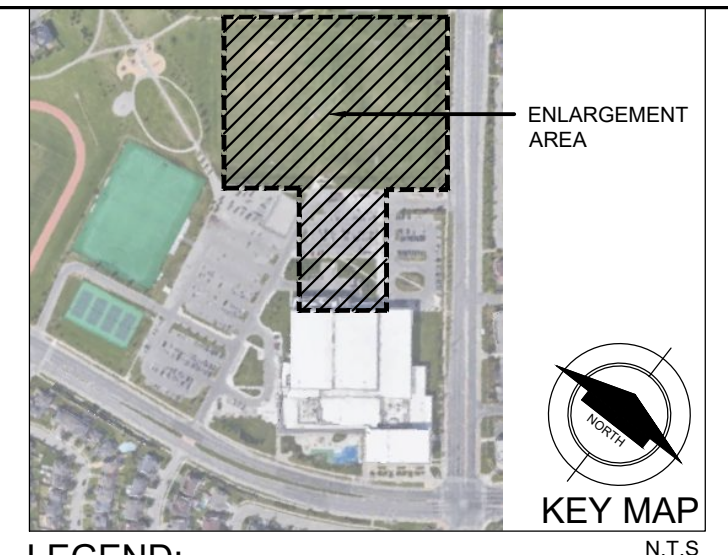
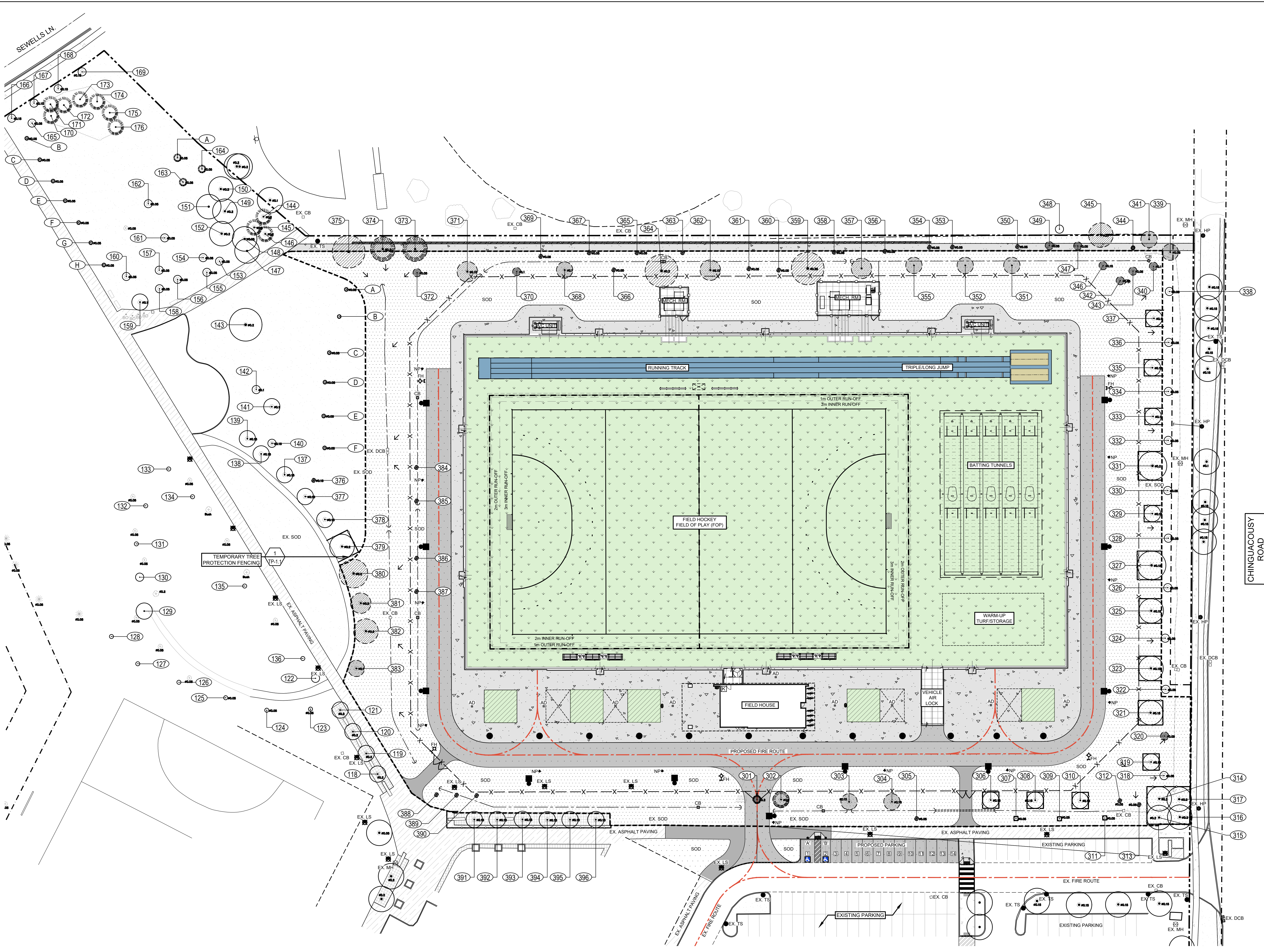
Robert Rafal Lis
The Urban Arborist Inc.
ISA Certified Arborist
MTCU Qualified Arborist

Tree Inventory – 1050 Sandalwood Pkwy W, Brampton, ON L7A 0K9 - May 3 2024

Tag #	Common Name	Botanical Name	Diameter at Breast Height (cm)			Health Condition	Structural Condition	Crown Radius (m)	Notes	Recommendations Based on Site Plan	Minimum TPZ (m)	Replacement Ratio
301	Ornamental Pear	Pyrus calleryana	12			Fair	Fair	1	Suckers at base	Remove	dripline	1
302	Ornamental Pear	Pyrus calleryana	15			Good	Good	2		Remove	dripline	1
303	Red Maple	Acer rubrum	12			Poor	Poor	2	Decay along trunk and severe die back in the crown.	Remove	dripline	1
304	Red Maple	Acer rubrum	11			Good	Good	2		Remove	dripline	1
305	Northern Catalpa	Catalpa speciosa	5			Good	Good	0.5	Newly planted.	Preserve & Protect	dripline	-
306	Red Maple	Acer rubrum	11			Fair/Poor	Fair/Poor	2	Decay along trunk, some die back in crown.	Preserve & Protect	dripline	-
307	Northern Catalpa	Catalpa speciosa	5			Good	Good	0.5	Newly planted.	Preserve & Protect	dripline	-
308	Red Maple	Acer rubrum	11			Good	Good	2		Preserve & Protect	dripline	-
309	Northern Catalpa	Catalpa speciosa	5			Good	Good	0.5	Newly planted.	Preserve & Protect	dripline	-
310	Red Maple	Acer rubrum	11			Fair	Fair	2	Trunk damage at main union, some deadwood throughout.	Preserve & Protect	dripline	-
311	Northern Catalpa	Catalpa speciosa	5			Good	Good	0.5	Newly planted.	Preserve & Protect	dripline	-
312	Red Maple	Acer rubrum	4			Dead	Dead	0.5	Newly planted.	Remove	-	-
313	Red Maple	Acer rubrum	4			Dead	Dead	0.5	Newly planted.	Remove	-	-
314	Red Maple	Acer rubrum	16			Good	Fair/Poor	3	Trunk damage on south side	Preserve & Protect	dripline	-
315	Red Maple	Acer rubrum	15			Fair	Fair	3		Preserve & Protect	dripline	-
316	Red Maple	Acer rubrum	14			Fair	Fair	3		Preserve & Protect	dripline	-
317	Red Maple	Acer rubrum	13			Fair	Fair	3		Preserve & Protect	dripline	-
318	Horse Chestnut	Aesculus hippocastanum	5			Good	Good	1		Preserve & Protect	dripline	-
319	Hackberry	Celtis occidentalis	15			Good	Good	2		Preserve & Protect	dripline	-
320	Horse Chestnut	Aesculus hippocastanum	5			Good	Good	1	Newly planted.	Remove	dripline	-
321	Red Oak	Quercus rubra	13			Good	Good	3		Preserve & Protect	dripline	-
322	Horse Chestnut	Aesculus hippocastanum	5			Good	Good	1	Newly planted.	Preserve & Protect	dripline	-
323	Hackberry	Celtis occidentalis	13			Good	Good	3		Preserve & Protect	dripline	-
324	Horse Chestnut	Aesculus hippocastanum	5			Good	Good	1	Newly planted.	Preserve & Protect	dripline	-
325	Hackberry	Celtis occidentalis	14			Good	Good	3	Minor deadwood at bottom.	Preserve & Protect	dripline	-
326	Horse Chestnut	Aesculus hippocastanum	5			Good	Good	1	Newly planted.	Preserve & Protect	dripline	-
327	Silver Maple	Acer saccharinum	18			Good	Good	3.5		Preserve & Protect	dripline	-
328	Horse Chestnut	Aesculus hippocastanum	5			Good	Good	1	Newly planted.	Preserve & Protect	dripline	-
329	Red Maple	Acer rubrum	9			Good	Good	2		Preserve & Protect	dripline	-
330	Horse Chestnut	Aesculus hippocastanum	5			Good	Good	1	Newly planted.	Preserve & Protect	dripline	-
331	Red Oak	Quercus rubra	15			Good	Good	3.5		Preserve & Protect	dripline	-
332	Horse Chestnut	Aesculus hippocastanum	5			Good	Good	1	Newly planted.	Preserve & Protect	dripline	-
333	Red Maple	Acer rubrum	8			Fair	Fair/Poor	2	Some deadwood throughout, trunk decay at base.	Preserve & Protect	dripline	-
334	Horse Chestnut	Aesculus hippocastanum	5			Good	Good	1	Newly planted.	Preserve & Protect	dripline	-
335	Hackberry	Celtis occidentalis	12			Good	Good	2		Preserve & Protect	dripline	-
336	Horse Chestnut	Aesculus hippocastanum	5			Good	Good	1	Newly planted.	Preserve & Protect	dripline	-
337	Red Maple	Acer rubrum	9			Good	Good	2	Minor deadwood.	Preserve & Protect	dripline	-
338	Horse Chestnut	Aesculus hippocastanum	5			Good	Good	1	Newly planted.	Preserve & Protect	dripline	-
339	Red Maple	Acer rubrum	8			Fair	Fair	2	Moderate deadwood throughout, some decay at base.	Remove	dripline	-
340	Horse Chestnut	Aesculus hippocastanum	5			Good	Good	1	Newly planted.	Remove	dripline	-
341	Red Oak	Quercus rubra	10			Good	Good	2		Remove	dripline	1
342	Horse Chestnut	Aesculus hippocastanum	5			Good	Good	1	Newly planted.	Remove	dripline	-
343	Eastern Redbud	Cercis canadensis	4			Dead	Dead	1	Newly planted.	Remove	-	-
344	Tamarack	Larix laricina	3			Dead	Dead	0.5		Remove	-	-
345	Norway Maple	Acer platanoides	11			Good	Good	3	Along fence	Remove	dripline	1
346	Eastern Redbud	Cercis canadensis	10			Dead	Dead	1	Newly planted.	Remove	-	1
347	Horse Chestnut	Aesculus hippocastanum	5			Good	Good	1	Newly planted.	Remove	dripline	-
348	Norway Maple	Acer platanoides	5			Fair	Fair	1	On neighbour's lot.	Remove	dripline	-
349	Horse Chestnut	Aesculus hippocastanum	5			Good	Good	1	Newly planted.	Remove	dripline	-
350	Northern Catalpa	Catalpa speciosa	4			Good	Good	0.5		Remove	dripline	-
351	Hackberry	Celtis occidentalis	10			Good	Good	2		Remove	dripline	1
352	Red Oak	Quercus rubra	9			Fair	Fair/Poor	2	Canker on trunk, leaning slightly East.	Remove	dripline	-
353	Northern Catalpa	Catalpa speciosa	5			Good	Good	0.5		Remove	dripline	-
354	Northern Catalpa	Catalpa speciosa	5			Good	Good	0.5		Remove	dripline	-
355	Hackberry	Celtis occidentalis	10			Good	Good	2		Remove	dripline	1
356	Northern Catalpa	Catalpa speciosa	5			Good	Good	0.5		Remove	dripline	-
357	Hackberry	Celtis occidentalis	10			Good	Good	2.5		Remove	dripline	1
358	Northern Catalpa	Catalpa speciosa	5			Good	Good	0.5		Remove	dripline	-
359	Silver Maple	Acer saccharinum	25			Good	Good	4		Remove	dripline	2
360	Northern Catalpa	Catalpa speciosa	5			Good	Good	0.5		Remove	dripline	-
361	Northern Catalpa	Catalpa speciosa	5			Good	Good	0.5		Remove	dripline	-
362	Silver Maple	Acer saccharinum	14			Fair	Poor	2.5	Decay on trunk from previous wound and canker.	Remove	dripline	1
363	Northern Catalpa	Catalpa speciosa	5			Good	Good	0.5		Remove	dripline	-
364	Silver Maple	Acer saccharinum	17			Good	Good	4		Remove	dripline	1
365	Northern Catalpa	Catalpa speciosa	5			Good	Good	0.5		Remove	dripline	-
366	Hackberry	Celtis occidentalis	5			Good	Good	0.5		Remove	dripline	-
367	Northern Catalpa	Catalpa speciosa	5			Good	Good	0.5		Remove	dripline	-
368	Red Maple	Acer rubrum	10			Very Poor	Very Poor	2	Decay along trunk, significant deadwood.	Remove	dripline	1
369	Northern Catalpa	Catalpa speciosa	5			Good	Good	1		Remove	dripline	-
370	Hackberry	Celtis occidentalis	7			Good	Good	1		Remove	dripline	-
371	Bur Oak	Quercus macrocarpa	13			Good	Good	2.5	Debris of neighbouring in tree in crown.	Remove	dripline	1
372	Hackberry	Celtis occidentalis	5			Fair	Fair	1		Remove	dripline	-
373	Silver Maple	Acer saccharinum	15			Good	Good	3		Remove	dripline	1
374	Silver Maple	Acer saccharinum	15			Good	Good	3		Remove	dripline	1
375	Silver Maple	Acer saccharinum	24			Fair	Fair/Poor	4	Co-dominant unions, large trunk wound on west side and significant size surface roots visible.	Remove	dripline	2
A	White Spruce	Picea Abies	H: 200cm			Fair	Fair	0.5	Newly planted. Minor deadwood.	Preserve & Protect	dripline	-
B	White Spruce	Picea Abies	H: 200cm			Good	Good	0.5	Newly planted.	Preserve & Protect	dripline	-
C	White Spruce	Picea Abies	H: 200cm			Poor	Fair	0.5	Newly planted. Chlorotic, tip die back.	Preserve & Protect	dripline	-
D	White Spruce	Picea Abies	H: 200cm			Good	Good	0.5	Newly planted.	Preserve & Protect	dripline	-
E	White Spruce	Picea Abies	H: 200cm			Good	Good	0.5	Newly planted.	Preserve & Protect	dripline	-
F	White Spruce	Picea Abies	H: 200cm			Good	Good	0.5	Newly planted.	Preserve & Protect	dripline	-
376	European Beech	Fagus sylvatica	6	x	4	Very Poor	Very Poor	0.5	Major die back and deadwood.	Preserve & Protect	dripline	-

377	Red Maple	Acer rubrum	12		Fair	Fair	2	Some crown die back.	Preserve & Protect	dripline	-
378	Red Maple	Acer rubrum	10		Good	Good	2		Preserve & Protect	dripline	-
379	Red Maple	Acer rubrum	17		Good	Good	3		Preserve & Protect	dripline	-
380	Red Maple	Acer rubrum	19		Good	Good	3.5		Remove	dripline	1
381	Red Maple	Acer rubrum	13		Good	Good	2.5		Remove	dripline	1
382	Red Maple	Acer rubrum	15		Good	Good	3		Remove	dripline	1
383	Red Maple	Acer rubrum	7		Dead/Dying	Dead/Dying	2		Remove		-
384	Triumph Elm	Ulmus 'Morton glossy'	5		Good	Good	0.5		Remove	dripline	-
385	Triumph Elm	Ulmus 'Morton glossy'	5		Good	Good	0.5		Remove	dripline	-
386	Triumph Elm	Ulmus 'Morton glossy'	5		Good	Good	0.5		Remove	dripline	-
387	Triumph Elm	Ulmus 'Morton glossy'	5		Good	Good	0.5		Remove	dripline	-
388	Eastern Redbud	Cercis canadensis	4		Dead	Dead	0.5		Remove	dripline	-
389	Eastern Redbud	Cercis canadensis	4		Dead	Dead	0.5		Remove	dripline	-
390	Eastern Redbud	Cercis canadensis	4		Poor	Poor	0.5	Significant deadwood.	Remove	dripline	-
391	Red Maple	Acer rubrum	11		Good	Good	2		Preserve & Protect	dripline	-
392	Red Maple	Acer rubrum	12		Fair	Poor	2	Canker and decay on trunk.	Preserve & Protect	dripline	-
393	Red Maple	Acer rubrum	9		Fair	Fair	2		Preserve & Protect	dripline	-
394	Red Maple	Acer rubrum	11		Fair	Poor	2	Canker and decay on trunk.	Preserve & Protect	dripline	-
395	Red Maple	Acer rubrum	15		Fair	Fair	2		Preserve & Protect	dripline	-
396	Red Maple	Acer rubrum	12		Fair	Fair	2		Preserve & Protect	dripline	-
Additional Inventory – May 6, 2024											
118	Red Maple	Acer rubrum	12		Fair	Fair	2		Preserve & Protect	dripline	-
119	Red Maple	Acer rubrum	12		Fair	Fair	2		Preserve & Protect	dripline	-
120	Red Maple	Acer rubrum	12		Fair	Fair	2		Preserve & Protect	dripline	-
121	Red Maple	Acer rubrum	12		Fair	Fair	2		Preserve & Protect	dripline	-
122	Red Maple	Acer rubrum	8		Dead	Dead	1		Preserve & Protect	dripline	-
123	Red Maple	Acer rubrum	5		Good	Good	0.5	Newly planted.	Preserve & Protect	dripline	-
124	Red Maple	Acer rubrum	5		Good	Good	0.5	Newly planted.	Preserve & Protect	dripline	-
125	Red Maple	Acer rubrum	5		Good	Good	0.5	Newly planted.	Preserve & Protect	dripline	-
126	Red Maple	Acer rubrum	5		Good	Good	0.5	Newly planted.	Preserve & Protect	dripline	-
127	Red Maple	Acer rubrum	5		Good	Good	0.5	Newly planted.	Preserve & Protect	dripline	-
128	Red Maple	Acer rubrum	5		Good	Good	0.5	Newly planted.	Preserve & Protect	dripline	-
129	Red Maple	Acer rubrum	13		Good	Good	2		Preserve & Protect	dripline	-
130	Red Maple	Acer rubrum	5		Fair	Poor	1	Bent over	Preserve & Protect	dripline	-
131	Red Maple	Acer rubrum	5		Poor	Fair	0.5	Crown die back.	Preserve & Protect	dripline	-
132	Red Maple	Acer rubrum	5		Good	Good	0.5		Preserve & Protect	dripline	-
133	Red Maple	Acer rubrum	5		Good	Good	0.5		Preserve & Protect	dripline	-
134	Northern Catalpa	Catalpa speciosa	6		Good	Good	0.5		Preserve & Protect	dripline	-
135	Northern Catalpa	Catalpa speciosa	6		Good	Good	0.5		Preserve & Protect	dripline	-
136	Northern Catalpa	Catalpa speciosa	6		Good	Good	0.5		Preserve & Protect	dripline	-
137	Red Maple	Acer rubrum	12		Poor	Poor	2	Crown die back.	Preserve & Protect	dripline	-
138	Red Maple	Acer rubrum	10		Poor	Poor	2	Crown die back.	Preserve & Protect	dripline	-
139	Red Oak	Quercus rubra	10		Fair	Fair	2	Crown die back.	Preserve & Protect	dripline	-
140	European Hornbeam	Carpinus betulus	10		Good	Good	1		Preserve & Protect	dripline	-
141	Red Oak	Quercus rubra	10		Fair/Poor	Fair/Poor	2	Significant deadwood and broken branches.	Preserve & Protect	dripline	-
142	Red Maple	Acer rubrum	10		Dead/Dying	Dead/Dying	1		Preserve & Protect	dripline	-
143	Red Maple	Acer rubrum	16		Good	Good	4		Preserve & Protect	dripline	-
144	Colorado Spruce	Picea pungens	14		Fair	Fair	2		Preserve & Protect	dripline	-
145	Colorado Spruce	Picea pungens	16		Fair	Fair	2		Preserve & Protect	dripline	-
146	Colorado Spruce	Picea pungens	15		Fair	Fair	2		Preserve & Protect	dripline	-
147	Hackberry	Celtis occidentalis	11		Good	Good	3		Preserve & Protect	dripline	-
148	Hackberry	Celtis occidentalis	15		Good	Good	3		Preserve & Protect	dripline	-
149	Hackberry	Celtis occidentalis	13		Good	Good	3		Preserve & Protect	dripline	-
150	Hackberry	Celtis occidentalis	13		Good	Good	3		Preserve & Protect	dripline	-
151	Hackberry	Celtis occidentalis	12		Good	Good	3		Preserve & Protect	dripline	-
152	Austrian Pine	Pinus nigra	11		Good	Good	3		Preserve & Protect	dripline	-
153	Redbud	Cercis canadensis	4		Good	Good	1	Recently planted	Preserve & Protect	dripline	-
154	Redbud	Cercis canadensis	4		Good	Good	1	Recently planted	Preserve & Protect	dripline	-
155	Redbud	Cercis canadensis	4		Good	Good	1	Recently planted	Preserve & Protect	dripline	-
156	Redbud	Cercis canadensis	4		Good	Good	1	Recently planted	Preserve & Protect	dripline	-
157	Redbud	Cercis canadensis	4		Good	Good	1	Recently planted	Preserve & Protect	dripline	-
158	Redbud	Cercis canadensis	4		Good	Good	1	Recently planted	Preserve & Protect	dripline	-
159	Red Oak	Quercus rubra	9		Dead/Dying	Dead/Dying	2		Preserve & Protect	dripline	-
160	Red Oak	Quercus rubra	5		Good	Good	1	Recently planted	Preserve & Protect	dripline	-
161	White Willow	Salix alba	3		Fair	Fair	1	Recently planted	Preserve & Protect	dripline	-
162	White Willow	Salix alba	3		Fair	Fair	1	Recently planted	Preserve & Protect	dripline	-
163	White Pine	Pinus strobus	4		Fair	Fair	1	Thinning, recently planted.	Preserve & Protect	dripline	-
164	White Pine	Pinus strobus	4		Fair	Fair	1	Thinning, recently planted.	Preserve & Protect	dripline	-
165	Redbud	Cercis canadensis	5		Good	Good	1		Preserve & Protect	dripline	-
166	Ornamental Pear	Pyrus calleryana	10		Good	Good	1		Preserve & Protect	dripline	-
167	Ornamental Pear	Pyrus calleryana	12		Good	Good	1		Preserve & Protect	dripline	-
168	Ornamental Pear	Pyrus calleryana	14		Good	Good	1		Preserve & Protect	dripline	-
169	Ornamental Pear	Pyrus calleryana	14		Good	Good	1		Preserve & Protect	dripline	-
170	Colorado Spruce	Picea pungens	15		Fair	Fair	2		Preserve & Protect	dripline	-
171	Norway Spruce	Picea abies	14		Good	Good	2		Preserve & Protect	dripline	-
172	Norway Spruce	Picea abies	17		Good	Good	2		Preserve & Protect	dripline	-
173	Colorado Spruce	Picea pungens	15		Good	Good	2		Preserve & Protect	dripline	-
174	Norway Spruce	Picea abies	14		Good	Good	2		Preserve & Protect	dripline	-
175	White Spruce	Picea glauca	13		Fair	Fair	2	Yellowing	Preserve & Protect	dripline	-
176	White Spruce	Picea glauca	14		Good	Good	2		Preserve & Protect	dripline	-
A	Austrian Pine	Pinus nigra	H: 175cm		Good	Good	1		Preserve & Protect	dripline	-
B	Norway Spruce	Picea abies	H: 200cm		Fair	Fair	0.5		Preserve & Protect	dripline	-
C	Norway Spruce	Picea abies	H: 200cm		Fair	Fair	0.5		Preserve & Protect	dripline	-
D	Norway Spruce	Picea abies	H: 200cm		Fair	Fair	0.5		Preserve & Protect	dripline	-
E	Norway Spruce	Picea abies	H: 200cm		Fair	Fair	0.5		Preserve & Protect	dripline	-
F	Norway Spruce	Picea abies	H: 200cm		Fair	Fair	0.5		Preserve & Protect	dripline	-

G	Norway Spruce	Picea abies	H: 200cm			Fair	Fair	0.5		Preserve & Protect	dripline	-
H	Norway Spruce	Picea abies	H: 200cm			Fair	Fair	0.5		Preserve & Protect	dripline	-
										Total Replacement Trees Required =		23



- LEGEND:**
- 1 DETAIL #
 - D-0 SHEET #
 - PROPERTY LINE
 - - - EASEMENT
 - TREE PROTECTION FENCING
 - EXISTING TREES TO REMAIN
 - ⊗ EXISTING TREES TO BE REMOVED
 - (000) TREE TAG

R6	Re-issued for Tender	2024-12-06	DP
R5	Issued for Tender	2024-11-13	DP
R4	Re-issued for SPA	2024-11-08	DP
no.	Revision	date	by

THESE DRAWINGS ARE THE PROPERTY OF LANDSCAPE PLANNING LIMITED AND SHALL NOT BE ALTERED, MODIFIED, REVISED OR CHANGED WITHOUT THE WRITTEN CONSENT OF LANDSCAPE PLANNING LIMITED. SEAL IS NOT VALID WITHOUT SIGNATURE OF THE LANDSCAPE ARCHITECT. DRAWINGS CANNOT BE USED FOR TENDER/CONSTRUCTION UNTIL SIGNED BY LANDSCAPE ARCHITECT



project number
2023-093



project title
**CASSIE CAMPBELL
COMMUNITY CENTRE
FIELD HOCKEY DOME**
1060 Sandalwood Pkwy W., Brampton ON, L7A 2Z8

client
CITY OF BRAMPTON

city file number
SPA-2024-0106

drawing title
**TREE INVENTORY,
PRESERVATION &
REMOVALS PLAN**

drawn by AN	reviewed by PG	drawing number: TP-1.0
date NOV 2024	scale 1:400	

