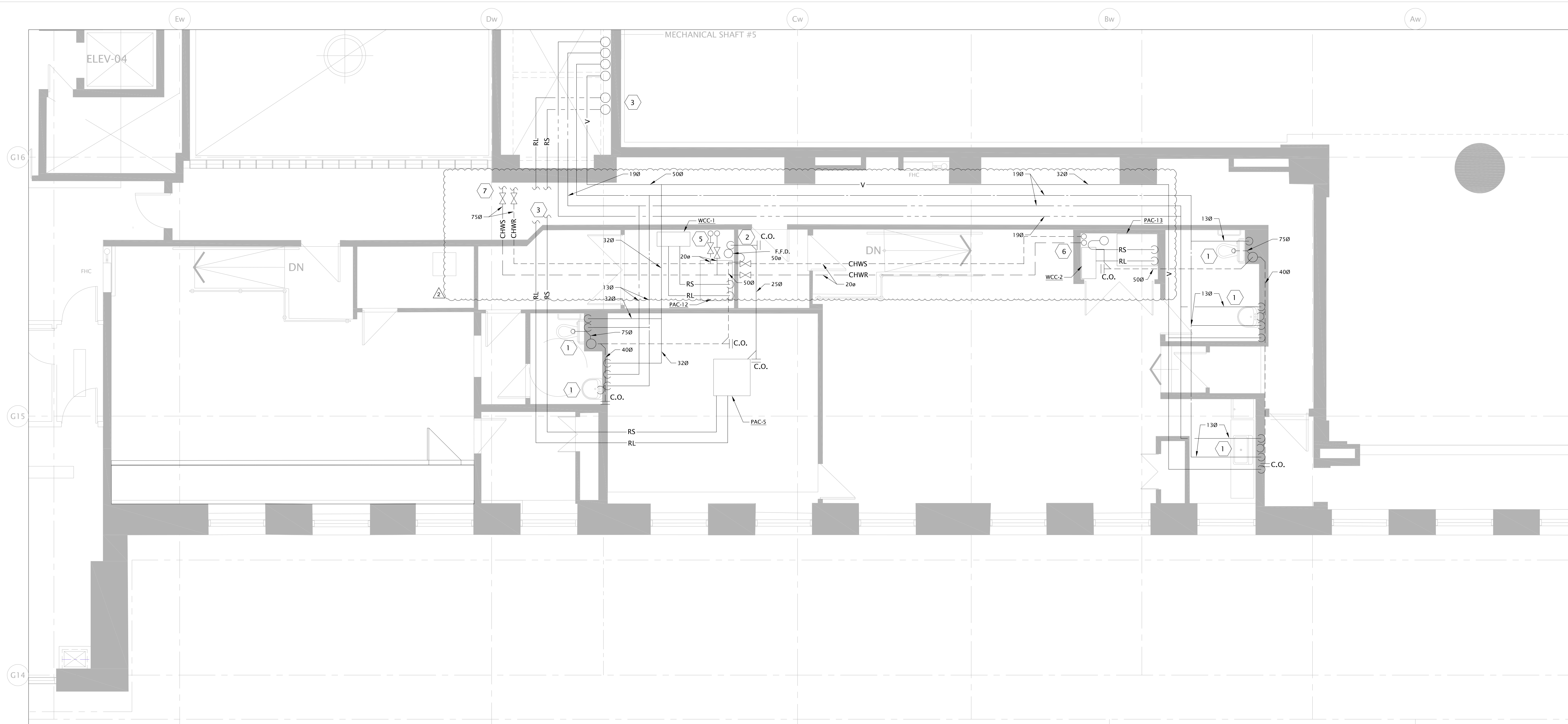
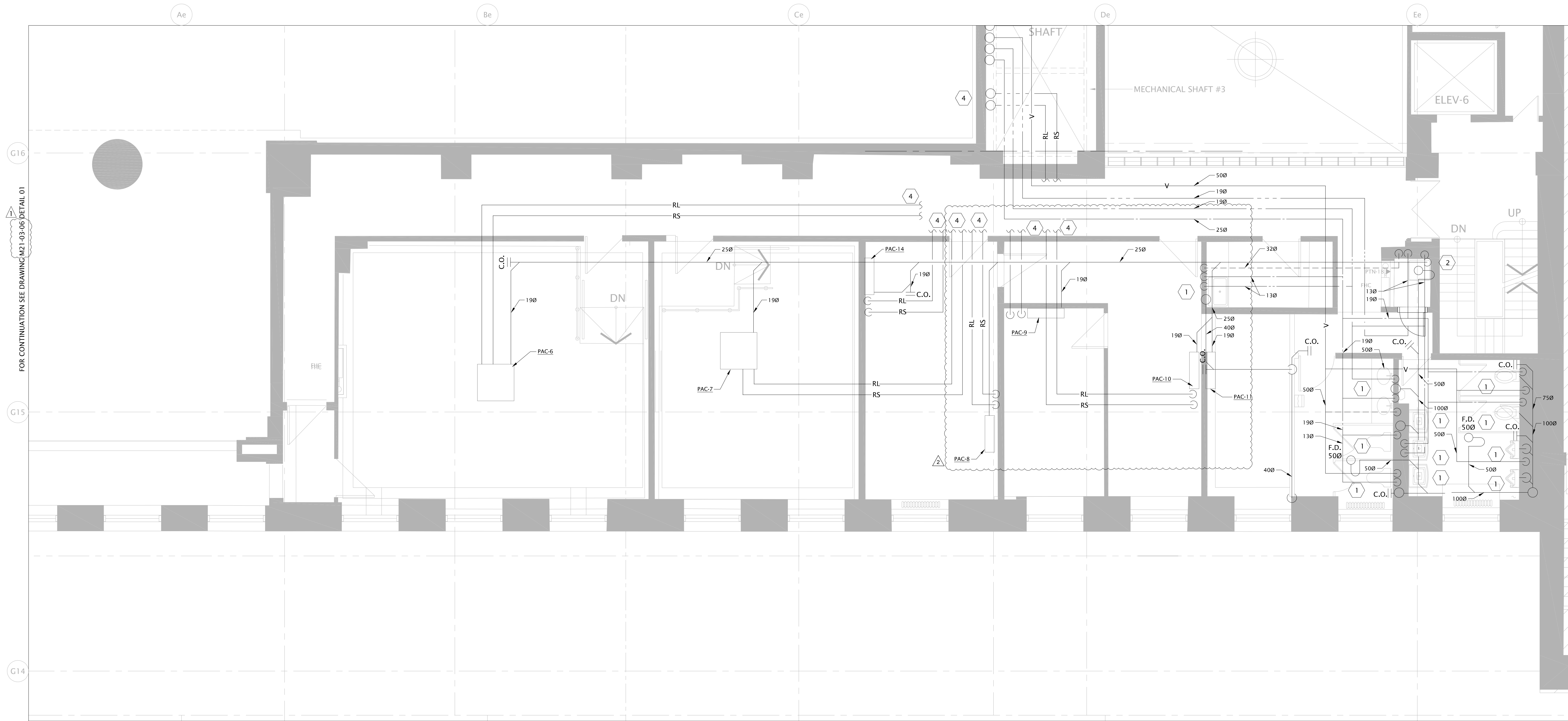


UTRANSPORTATIONCAGCCTT104-009\_US\_000\_7\_C000\_SECURITY\_OFFICE\_RENOVATION\_DRAWING\_MECHANICAL\_DRAWING  
TIME: 2022-09-01 14:00:00  
PLOT DATE: 2022-09-01 14:00:00  
FULL PATH AND FILENAME



01 ENLARGED PLAN - WEST  
M21-03-06 SCALE: 1:50



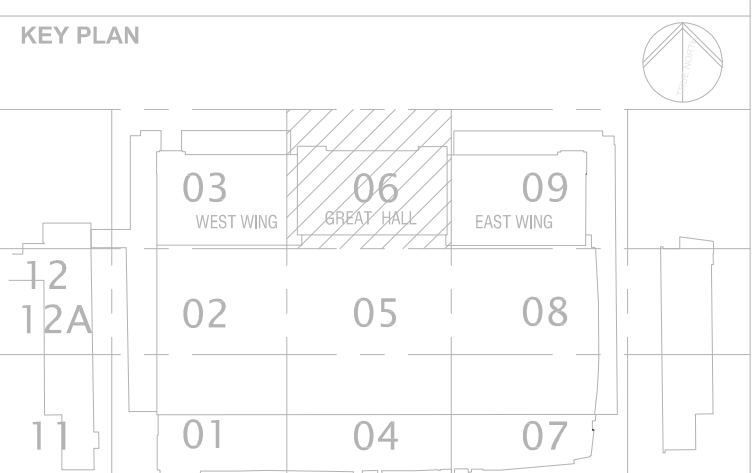
02 ENLARGED PLAN - EAST  
M21-03-06 SCALE: 1:50

- GENERAL NOTES:
- ALL EXISTING SERVICES SHOWN ARE APPROXIMATE AND BASED ON EXISTING DRAWINGS. CONTRACTOR SHALL VERIFY ALL LOCATIONS ON SITE.
  - CONTRACTOR TO COORDINATE INSTALLATION WITH ALL OTHER TRADES INVOLVED ON SITE.
  - ALL WORK MUST BE COORDINATED WITH OWNER.
  - CONTRACTOR SHALL VISIT SITE TO EXAMINE EXISTING CONDITIONS. CONTRACTOR TO PROPOSE SOLUTION FOR REVIEW TO THE CONSULTANT IF ANY INTERFERENCES OCCUR DUE TO SITE CONDITIONS.
  - ALL MATERIAL USED IN THE CEILING SPACE (RETURN AIR PLenum) SHALL MEET AND EXCEED THE N.B.C. REQUIREMENTS FLAME AND SMOKE SPREAD / DEVELOPMENT RATINGS.
  - CONTRACTOR TO HAND OVER IN GOOD SHAPE TO OWNER ALL BASE BUILDING MATERIAL NOT USED.
  - CONTRACTOR TO INSTALL FILTER MEDIUM OVER PLEATED FILTERS IN COMPARTMENT UNITS AND CLEAN COIL FILTERS AFTER COMPLETION OF PROJECT. DURING DEMOLITION AND DRYWALL SANDING STAGES INSTALL A TEMPORARY FILTER ON RETURN AIR OPENINGS.
  - REFER TO THE STANDARD DETAILS AND DETAIL SHEETS FOR ADDITIONAL INFORMATION.
  - TRAPPED AND PRIMED ALL HUB, FLOOR SINK, FUNNEL AND FLOOR DRAIN.
  - PROVIDE P-TRAP AS REQUIRED BY NATIONAL PLUMBING CODE - 2020
  - ALL REFRIGERANT PIPE ROUTING MUST OCCUR IN THE CORRIDORS PRIOR TO BRANCHING TO THEIR RESPECTIVE UNITS.

- DRAWING NOTES:
- EXISTING PLUMBING FIXTURE TO REMAIN (TYPICAL).
  - EXTEND AND TERMINATE CONDENSATE DRAIN INDIRECTLY OVER JANITOR SINK.
  - NEW REFRIGERANT LINES (LIQUID LINE AND SUCTION LINE) UP TO CONDENSER UNIT 'CU-WCC-3' ON 5TH FLOOR.
  - NEW REFRIGERANT LINES (LIQUID LINE AND SUCTION LINE) UP TO CONDENSER UNIT 'CU-WCC-4' ON 6TH FLOOR.
  - 200 CHWS & RETURN PIPING FROM BELOW, CONNECT TO WCC-1, COMPLETE WITH VALVES.
  - 200 CHWS & RETURN PIPING FROM BELOW, CONNECT TO WCC-2, COMPLETE WITH VALVES.
  - CONNECT NEW 750 CHWS & RETURN PIPING TO EXISTING 750 CHWS & RETURN SERVICES AT THIS LOCATION IN THE 2ND FLOOR CEILING AND EXTEND AS INDICATED. CHILLED WATER SUPPLY AND RETURN PIPING INDICATED ON THIS DRAWING ARE ALL ROUTING IN THE 2ND FLOOR CEILING SPACE AND TO ROUTE UP ON THE 3RD FLOOR AS INDICATED.

FOR CONTINUATION SEE DRAWING M21-03-06 DETAIL 02

YYYYMMDD	ISSUED FOR	REV
2024JULY25	ISSUED FOR DESIGN SCHEMATIC	A
2024AUG16	ISSUED FOR DESIGN REVIEW	B
2024SEP20	ISSUED FOR 100% CD/TENDER	0
2024OCT31	MECHANICAL ADDENDUM 1	1
2025JAN07	ISSUED FOR BUILDING PERMIT	C
2025JAN07	MECHANICAL ADDENDUM 2	2



CONSULTANTS

Architect  
NORR Limited

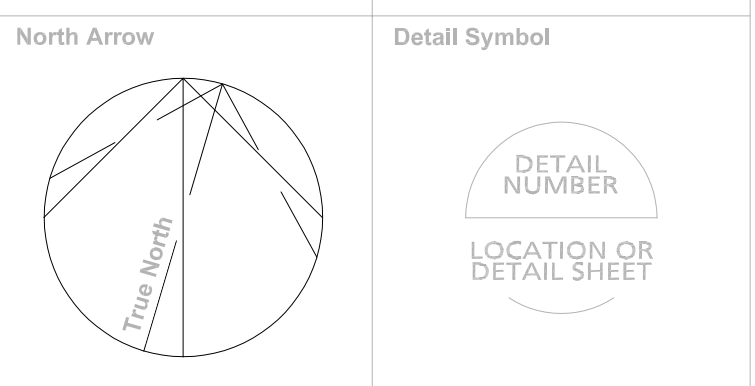
Mechanical  
NORR Limited

Electrical  
NORR Limited

Record drawing. Not for construction.  
This drawing has been prepared solely for the use of City of Toronto and there are no representations of any kind made by NORR Limited to any party with whom NORR Limited has not entered into a contract.  
This record drawing includes Contractor's information which has not been verified by the Designer for its accuracy. The Designer does not guarantee this drawing for accuracy or completeness.

NORR Limited  
An Inverken Group Company  
175 Bloor St. East  
North Tower, 15th Floor  
Toronto, ON, Canada M4W 3R8  
www.norr.com

**NORR**  
ARCHITECTS - ENGINEERS - PLANNERS



Project Manager  
E. MIRAN

Project Leader  
Checked  
EMYC  
Scale  
1:50



Project  
CITY OF TORONTO  
UNION STATION  
3RD FLOOR SECURITY  
OFFICE RENOVATION

Drawing Title  
**THIRD FLOOR PLAN  
ENLARGED PLANS  
PLUMBING & DRAINAGE LAYOUT**

Check Scale (may be photo reduced)  
0 1 inch 0 10 mm

Project No.  
TR1024-0297

Drawing No.  
M21-03-06