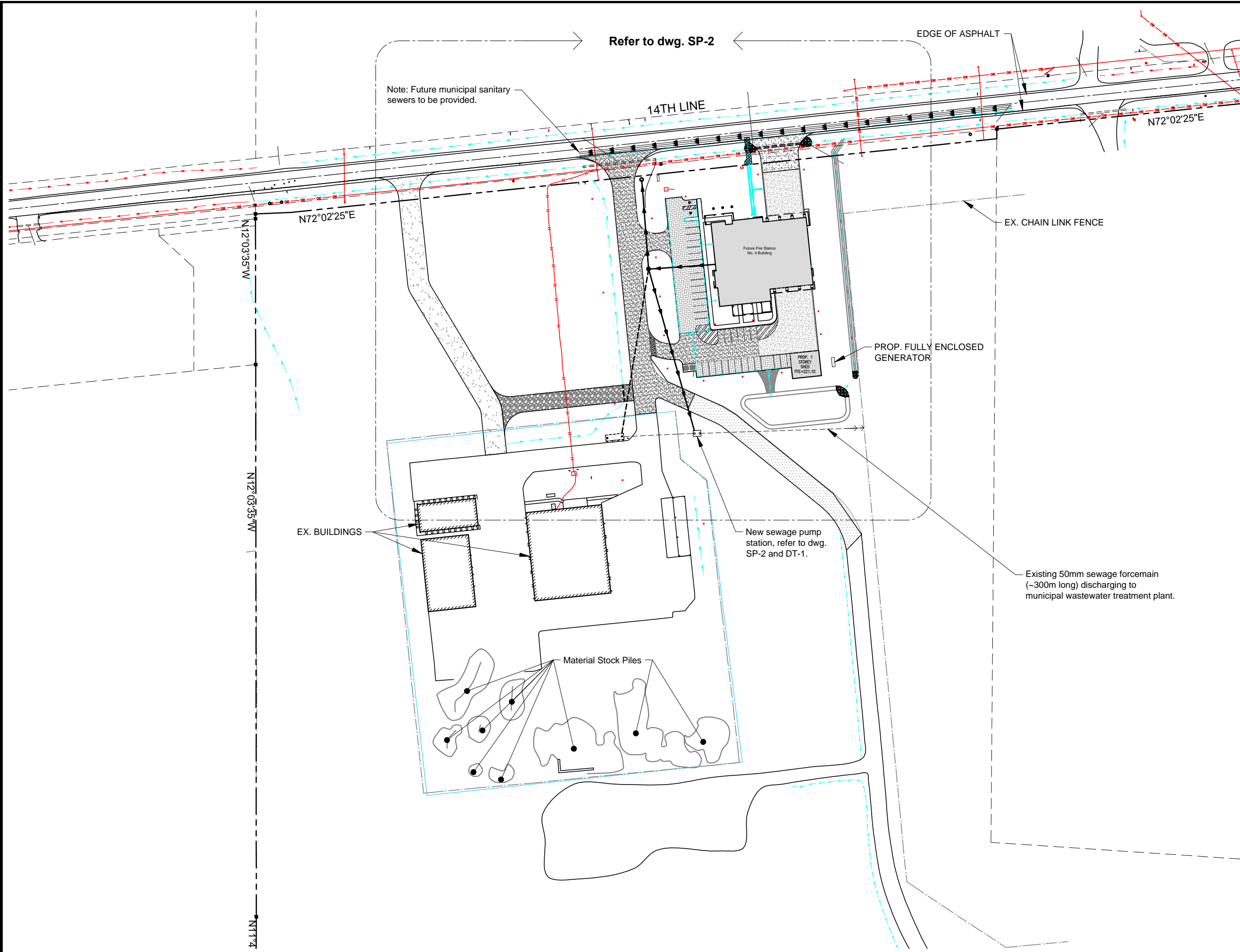




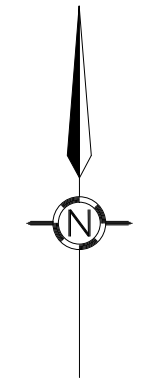
Future Fire Station No 4
6375 14th Line
Town of New Tecumseth

Part Site Key Plan:
Proposed Sewage Pump Station

Scale: 1:1,500	Designed By: EG
Date: 12-NOV-2020	Drawn By: JR
Project No.:	Checked By: TK
D3092	SP-1



File: Z:\Gunnell Engineering\AutoCAD\3092 - Fire Station 4 - New Tecumseth\CAD\A-SP_PUMP_TANK\3092ASPF1.dwg
 Plotted On: Thu, 19 Nov 2020 2:04pm



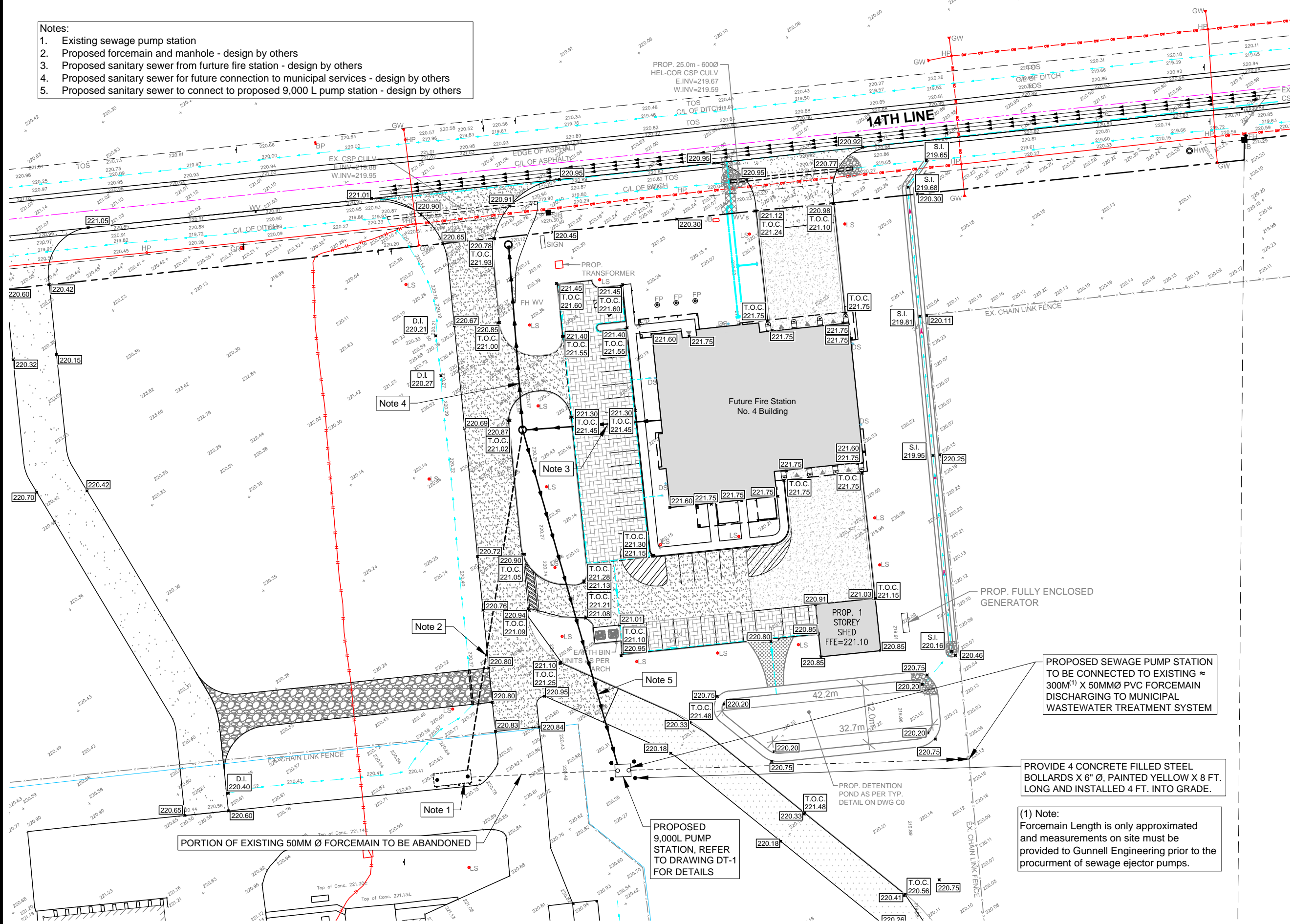
Future Fire Station No 4
6375 14th Line
Town of New Tecumseth

Part Site Plan:
Proposed Sewage Pump Station

Scale: 1:750	Designed By: EG
Date: 12-NOV-2020	Drawn By: JR
Project No.:	Checked By: TK
D3092	SP-2

Proposed 9,000 L Sewage Pump Station Design Only

- Notes:
- Existing sewage pump station
 - Proposed forcemain and manhole - design by others
 - Proposed sanitary sewer from future fire station - design by others
 - Proposed sanitary sewer for future connection to municipal services - design by others
 - Proposed sanitary sewer to connect to proposed 9,000 L pump station - design by others



PROPOSED SEWAGE PUMP STATION TO BE CONNECTED TO EXISTING ≈ 300M¹ X 50MMØ PVC FORCEMAIN DISCHARGING TO MUNICIPAL WASTEWATER TREATMENT SYSTEM

PROVIDE 4 CONCRETE FILLED STEEL BOLLARDS X 6" Ø, PAINTED YELLOW X 8 FT. LONG AND INSTALLED 4 FT. INTO GRADE.

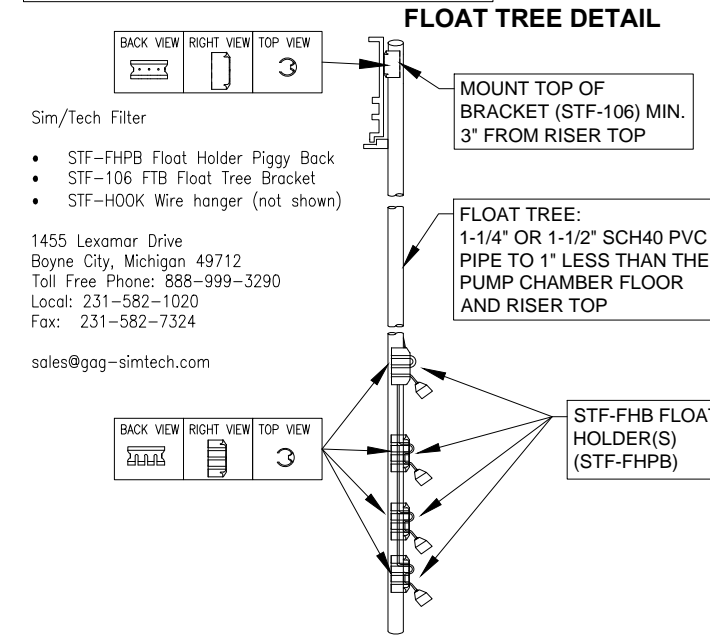
(1) Note:
 Forcemain Length is only approximated and measurements on site must be provided to Gunnell Engineering prior to the procurement of sewage ejector pumps.

PROPOSED 9,000L PUMP STATION, REFER TO DRAWING DT-1 FOR DETAILS

PORTION OF EXISTING 50MM Ø FORCEMAIN TO BE ABANDONED

Note: Blueskin Waterproofing

1. Provide 16" wide Blueskin waterproofing to tank horizontal joint and tank lid joint.
2. Provide Blueskin and mastic sealant to pipe inlet, pipe outlet and riser / tank interface.
3. Provide Blueskin around access risers.



*****IMPORTANT*****

Pump sizing for this project was based on estimated information provided by the Town of New Tecumseth / Alaimo Architecture. All measurements / elevations and forcemain / discharge details will need to be made available to Gunnell Engineering at the shop drawing review stage, prior to ordering the specified sewage pumps.

- Float Tree Notes:**
- Use of float tree or free floating level switches are permissible as long as access for easy float adjustments and pump servicing is maintained
 - Float to be tethered to stainless steel cable
 - All float positions to be determined by Gunnell Engineering staff.

- General Notes:**
- Contractor to provide a copy of shop drawings for control panels, prior to installation.
 - All pipe seals use High Pressure Seal.
 - Fitted with two specified risers / access hatches for the pump tank.
 - For recommended installation procedures refer to supplier's installation guidelines.
 - A maximum of 2 metre burial depth is allowable on top of the pump station tank (verify with manufacturer). Extra reinforcement is required for use in areas with vehicular traffic and/or burial depths over 1 metre.



Future Fire Station No 4
6375 14th Line
Town of New Tecumseth

Proposed Sewage Pump Station

Scale: N.T.S. Designed By: EG

Date: 12-NOV-2020 Drawn By: JR

Project No.: Checked By: TK

Drawing No.:

D3092

DT-1

