

KEY PLAN

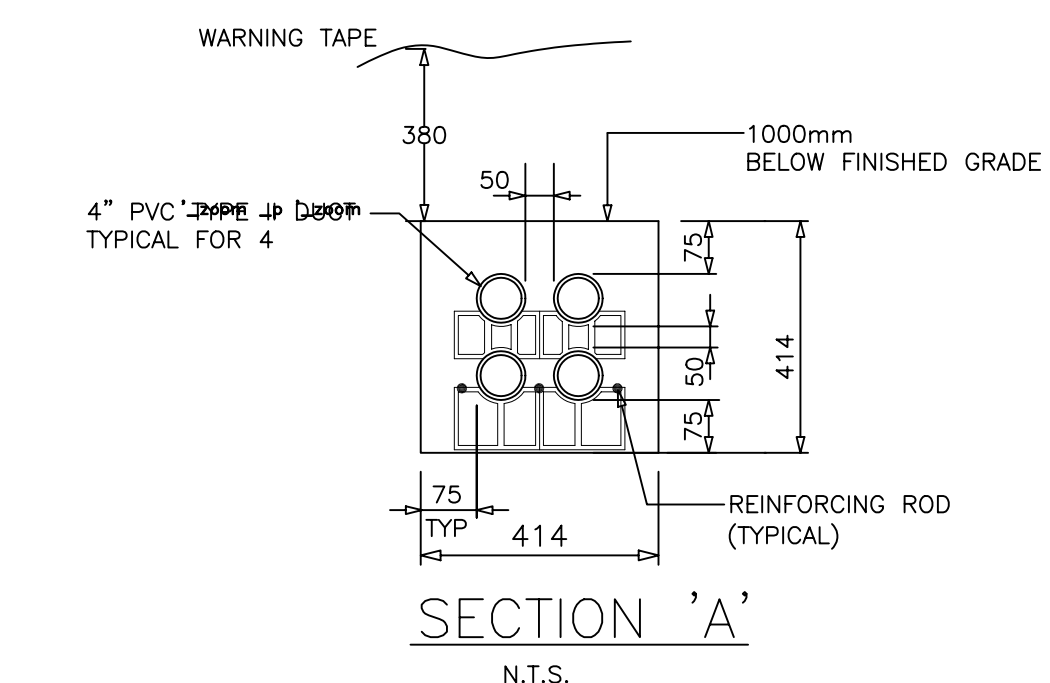
EA ENGINEERING SERVICES
209-60 CALLOWHILL DR.
ETOBICOKE, ON M9R 3L5
TEL: (416) 249-9690

The Design, including, but not limited to: Spatial Relationships, Orientation & General Configuration of the project are the Copyright of the Architect.

Do Not Scale The Drawings.
All Drawings, Specifications And Related Documents Are The Copyright Of The Architect And Must Be Returned Upon Request.

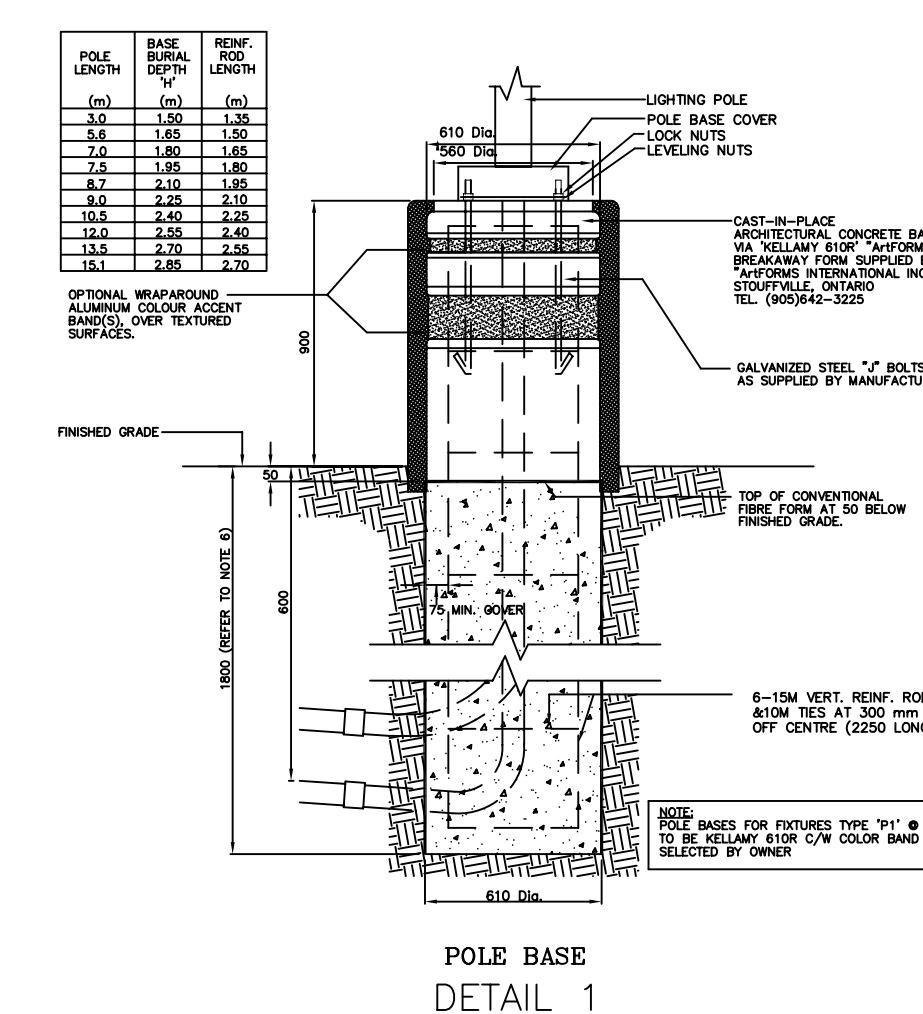
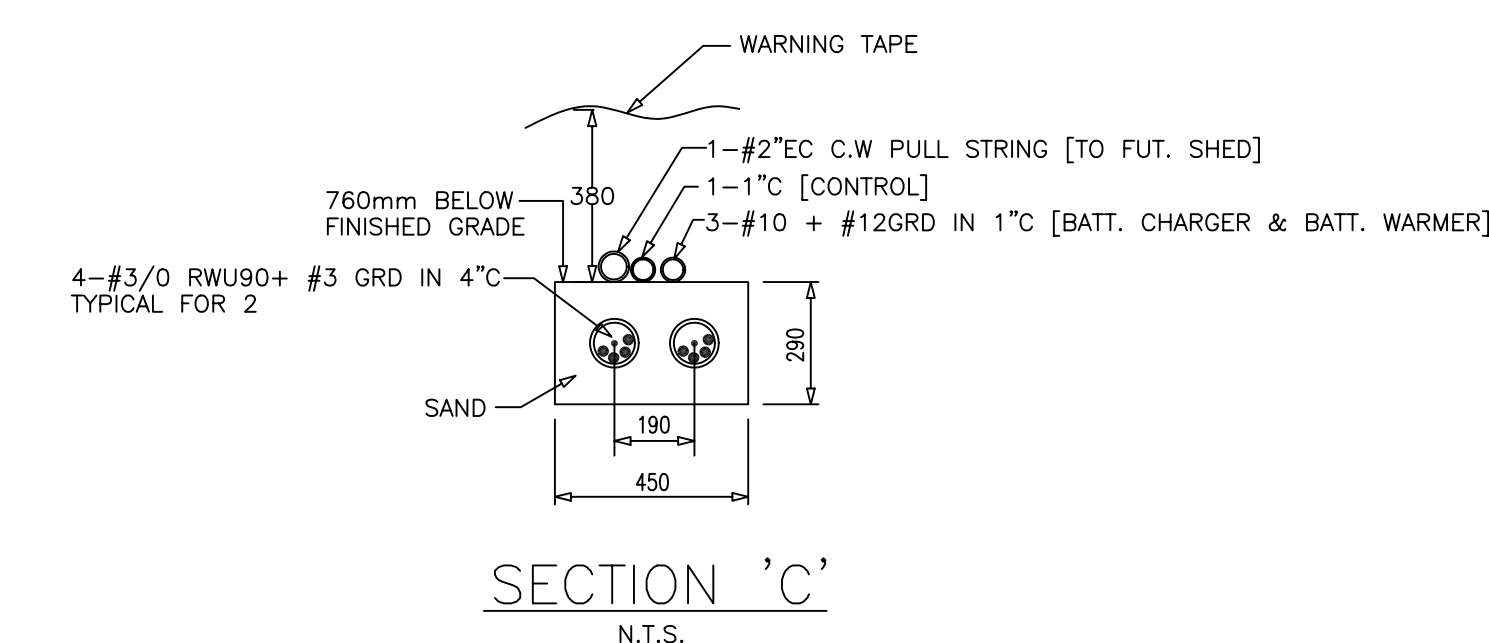
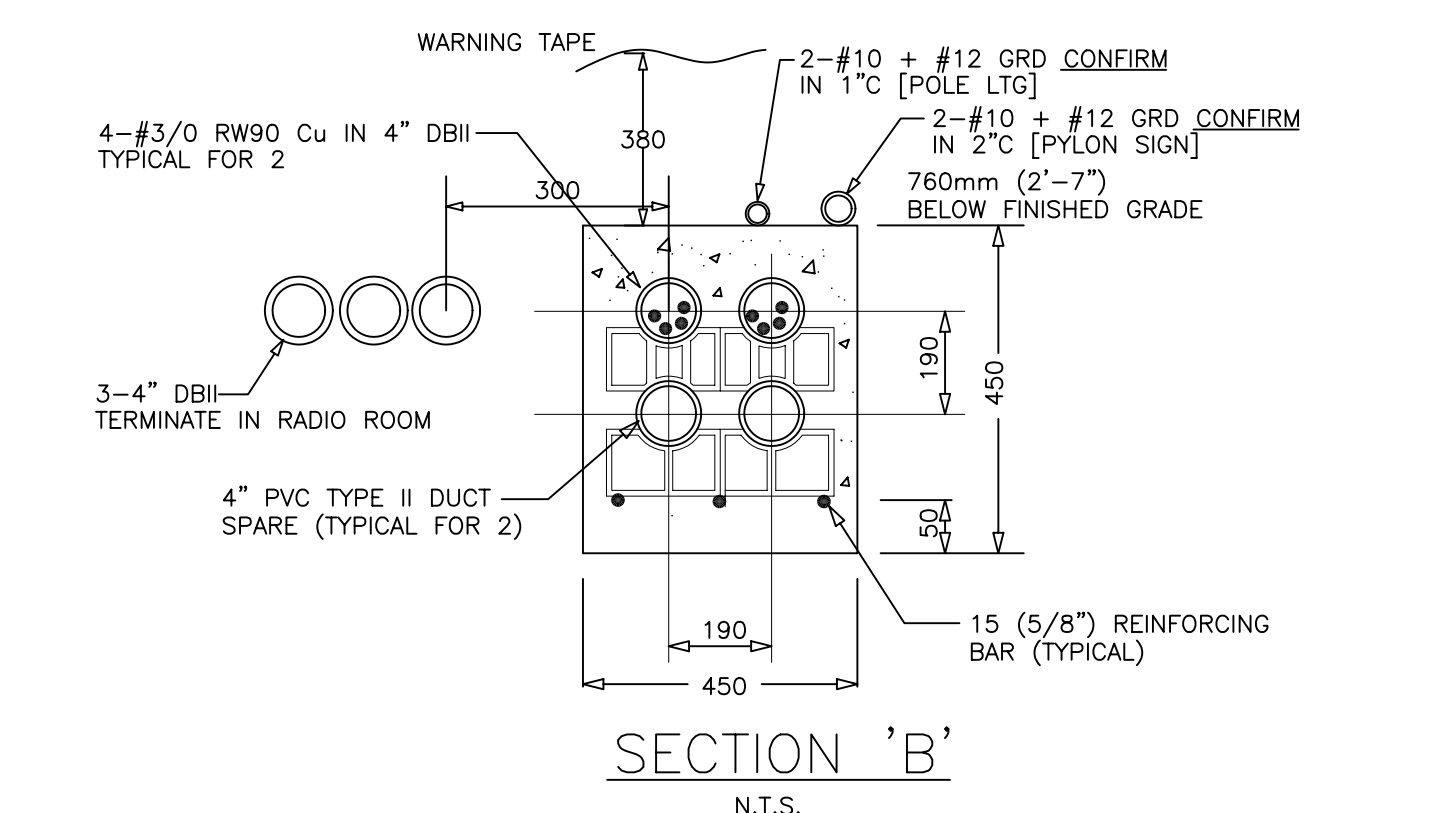
Reproduction Of Drawings, Specifications And Related Documents In Part Or Whole Is Forbidden Without The Architects Written Permission.

This Drawing Is Not To Be Used For Construction Until Signed By The Architect.



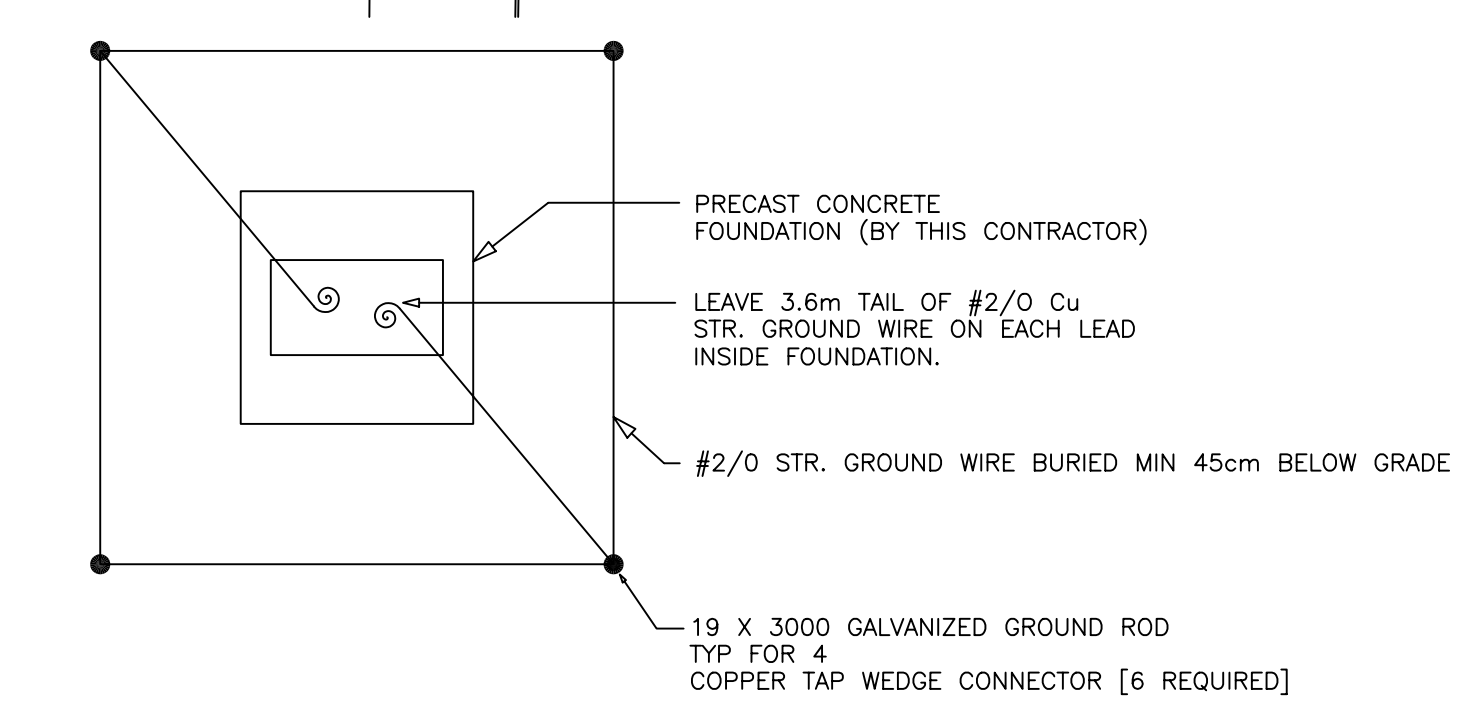
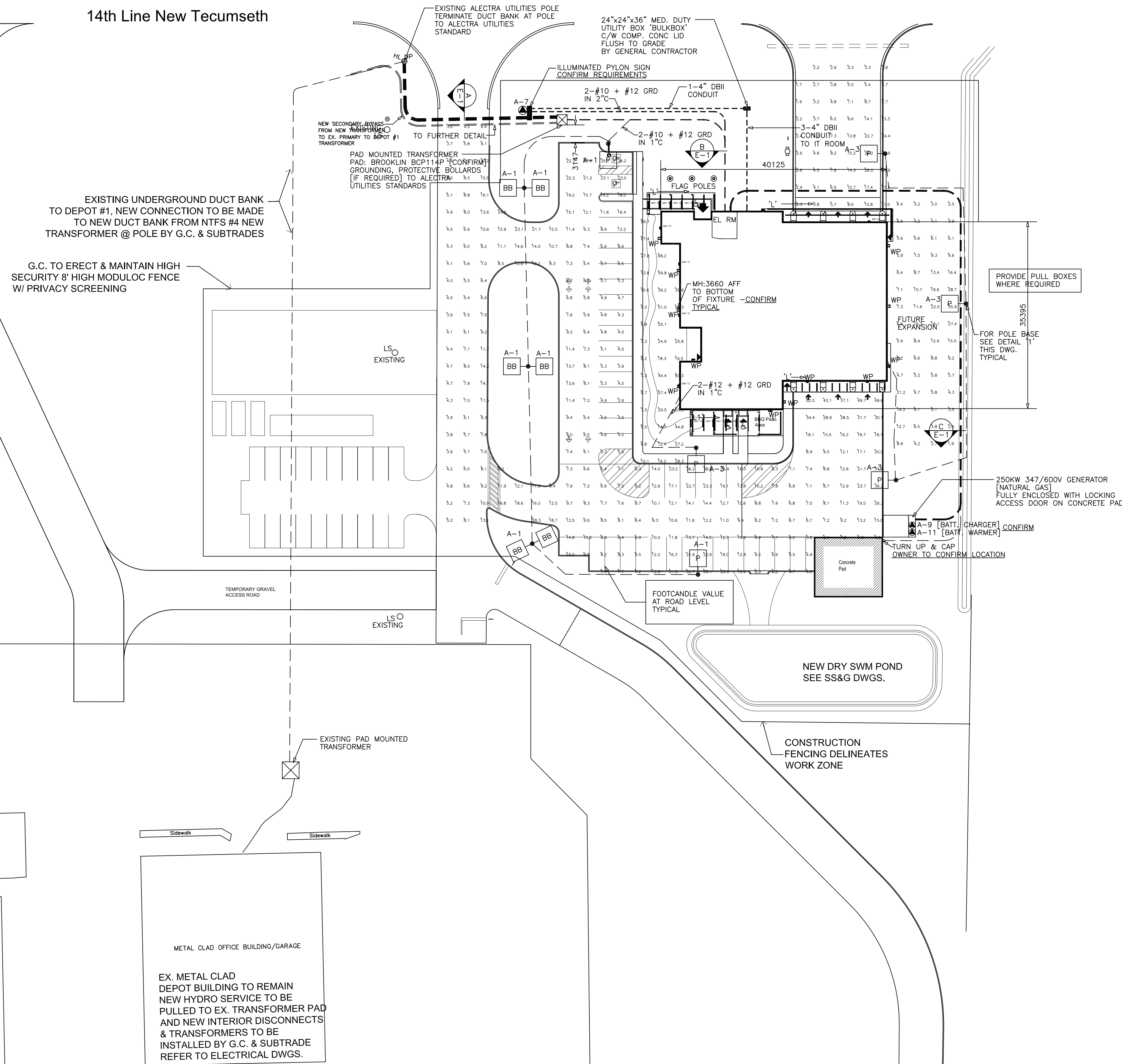
CONCRETE DUCTBANK NOTES:

ALL DUCTS SHALL BE CSA TYPE DB2 WITH AN INTERNAL DIAMETER OF 102mm AND OUTER DIAMETER 107mm. ALL DUCTS SHALL BE TERMINATED WITH BELL FITTINGS AT EACH END. DUCTS TO BE SUPPORTED WITH APPROVED SPACER. THE SPACERS SHALL BE INSTALLED WITHIN 600mm ON BOTH SIDES OF EACH COUPLING USED. THE SPACERS FOR 3.0m OD DUCT LENGTH SHALL BE USED. THE DUCT LENGTHS SHALL BE JOINED TOGETHER WITH AN APPROVED COUPLING TO PROVIDE A SOUND AND WATERPROOF JOINT. THE JOINTS IN ADJACENT DUCTS SHALL BE STAGGERED BY AT LEAST 200mm. THE DUCTS SHALL HAVE AN EVEN SLOPE IN ONE DIRECTION OF NOT LESS THAN 75mm IN 30.0m TO PROVIDE DRAINAGE. THE SLOPE SHOULD BE TOWARD THE STREET WHERE POSSIBLE. THE DUCT SHALL BE ENCASED WITH 20MPA GRADE CONCRETE. THE CONCRETE SHALL BE WORKED BELOW AND BETWEEN PIPES TO PRODUCE HOMOGENOUS MASS. THE CONCRETE SHALL BE IN ACCORDANCE WITH CSA STANDARDS. THE DUCT RUN SHALL BE REINFORCED. REINFORCING STEEL BARS 15mm DIAMETER SHALL BE LAID LONGITUDINALLY ALONG THE TRENCH. LATERAL SPACING AND 75mm ABOVE THE BASE OF THE CONCRETE AND OVERLAP OF 600mm OF REINFORCING BARS SHALL BE PROVIDED WHERE NECESSARY. THE REINFORCING BARS SHALL BE TIED TOGETHER WHERE THEY OVERLAP. WHEN COMPLETE THE DUCTS SHALL BE CLEAN, WATERPROOF AND FREE FROM OBSTRUCTIONS AND THE ENDS PLUGGED WITH STANDARD DUCT PLUGS. EACH DUCT TO BE MANDRELLED AND FINISHED WITH 10mm ROPE WITH MIN 500 POUNDS OF BREAKING STRENGTH. WHERE IT IS REQUIRED THAT THE CUSTOMER SHALL JOIN DIRECTLY DUCTS, THE CUSTOMER'S DUCTS SHALL BE LEFT ALECTRA UTILITIES WITH THE PROJECTING MIN 300mm FROM THEIR CONCRETE ENVELOPE IN A STAGGERED PATTERN. THEY SHALL BE EQUIPPED WITH SUITABLE COUPLINGS AND PLUGGED UNTIL JOINTS ARE MADE. THE FACE OF THE CONCRETE ENVELOPE SHALL BE LEFT ROUGH TO KEY WITH THE EXTENSION ENVELOPE. THE RODS SHALL PROJECT 900mm FROM THE CENTRE TO ANCHOR INTO THE CONCRETE EXTENSION WHEN THE LATER IS REQUIRED. THE CONTRACTOR SHALL APPLY TO ALECTRA 48 HOURS BEFORE DIGGING THE TRENCH. BACKFILL AND COMPACTING WITH MATERIALS AS PER MUNICIPAL, REGIONAL STANDARDS.



NOTES:
1. ALL DIMENSIONS ARE IN MILLIMETRES.
2. TOP OF FOUNDATION SHALL BE 150mm ABOVE FINISHED GRADE.
3. FINISHED GRADE SHALL BE 150mm ABOVE FINISHED GRADE.
4. CONCRETE SHALL BE WORKED TO THE TOP OF THE FOUNDATION.
5. CONTRACTOR TO VERIFY OWNER'S SIZE AND LOCATION OF POLE BASE.
6. VERIFY ALL DIMENSIONS WITH OWNER.
7. FORM RELEASE AGENT HAS BEEN APPLIED TO INSIDE SURFACE OF FORMWORK.

14th Line New Tecumseth



Symbol	Qty	Label	Description	LLF	Luminaire Lumens	Luminaire Watts	Total Watts	Filename	Mounting Height
[Symbol]	62	L-4LS4 40K L	L11-2-3KOU-04LS480-XX-40K	0.900	4074	24.8	1537.6	L11-2-3KOU-04LS480-XX-40KIES	12, 14, 26
[Symbol]	22	L-3LS4 LT	L11-2-3KOU-03LS480-XX-40K	0.900	3056	18.6	408.2	L11-2-3KOU-03LS480-XX-40KIES	12
[Symbol]	4	P	ALK-L52C4-XX-30K	0.900	7193	60	230	ALK-L52C4-XX-30KIES	23
[Symbol]	3	P B2B BB	ALK-L52C4-XX-30K	0.900	7193	50	300	ALK-L52C4-XX-30KIES	23
[Symbol]	10	WP	WFC-PS60A2-Q-3C-40W-30K	0.900	5786	40	400	WFC-PS60A2-Q-3C-40W-30KIES	12, 13

ALL FIXTURES ARE NIGHT FRIENDLY. THE LENGTHS OF LINEAR FIXTURES TO BE VERIFIED IN THE FIELD. POLE STANPRO PS4-20-SD-BK-PA CONFIRM COLOUR/FIXTURES COLOR TO BE CONFIRMED

Label	Calc/Type	Units	Avg	Max	Min	Avg/Min	Max/Min
Calcs Covering Property	Illuminance	Lux	0.24	15.2	0.0	N/A	N/A
Calcs Hard Surface Area	Illuminance	Lux	33.37	656.9	0.2	166.85	3265
Calcs Landscape Area	Illuminance	Lux	64.07	224.0	7.5	8.54	29.87

New Tecumseth
Alliston · Beeton · Tottenham

alaimo architecture inc.

202-851 WESTON ROAD
Woodbridge, ON L4L 9R4
P: (905)856-2840
F: (905)856-4912

info@alaimoarchitecture.com

SITE PLAN LIGHTING & POWER LAYOUT

Project
New Tecumseth Fire Station No. 4
6365 14TH LINE
NEW TECUMSETH (NORTH PART LOT 8
CONCESSION 13, PART 1 & 3 OF 51R26286)

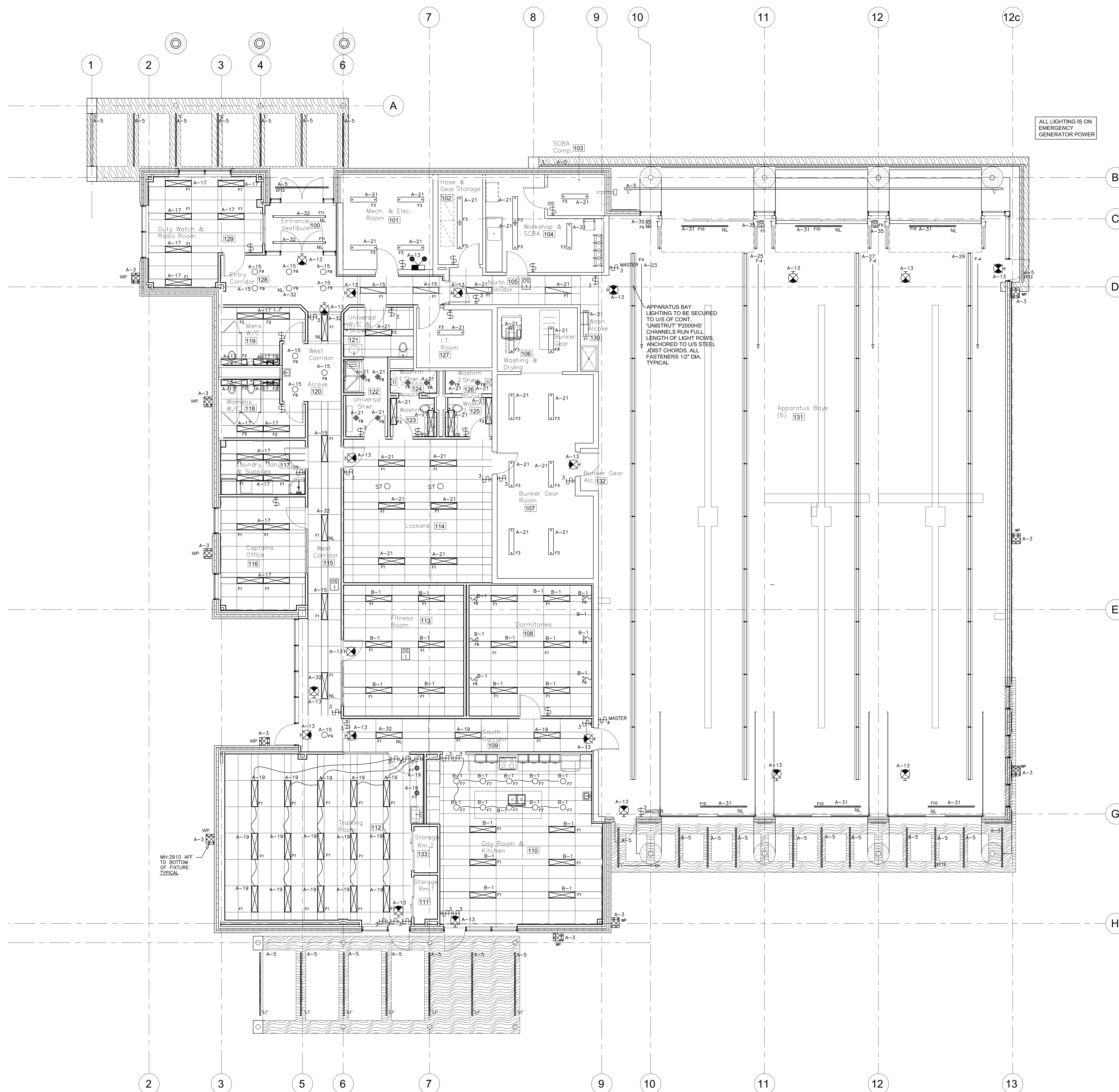
Scale
1 : 400
Issued by
D11-TE-046
File No.
Plot Date

The Design, including, but not limited to: Spatial Relationships, Orientation & General configuration of the project are the Copyright of the Architect.

Do Not Scale The Drawings.
 All Drawings, Specifications And Related Documents Are The Copyright Of The Architect And Must Be Returned Upon Request.

Reproduction Of Drawings, Specifications And Related Documents In Part Or Whole Is Forbidden Without The Architects Written Permission.

This Drawing Is Not To Be Used For Construction Until Signed By The Architect.



No.	Issued For	Date
1	ISSUED FOR REVIEW	12/18/19
2	ISSUED FOR PERMIT & TENDER	12/05/22
2	ISSUED FOR SPA & BLDG PERMIT	09/12/23



alaimo
 architecture
 inc.

202-8551 WESTON ROAD
 Woodbridge, ON L4L 9R4
 P: (905)856-2840
 F: (905)856-4912

info@alaimoarchitecture.com

Drawing Title
LIGHTING LAYOUT

Project
New Tecumseth Fire Station No. 4
 6365 14TH LINE (NORTH PART LOT 8 CONVESSION 13 PART 1 & 3 OF 51R26286) NEW TECUMSETH, ON L9R 1V4

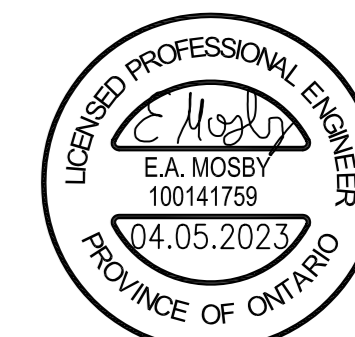
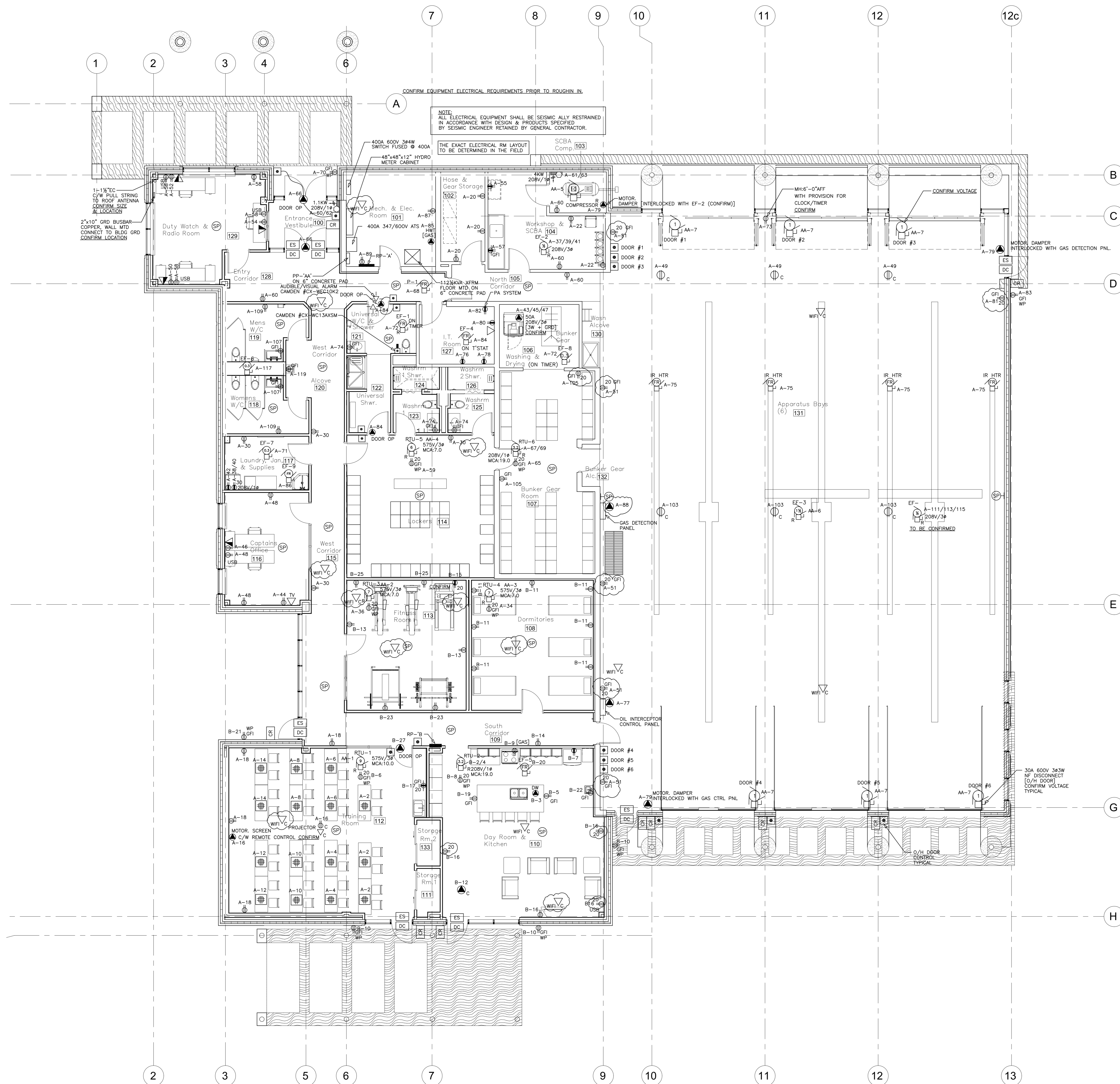
Scale
1 : 75
 Issued by
D11-TE-046
 File No.
 Plot Date

The Design, including, but not limited to: Spatial Relationships, Orientation & General configuration of the project are the Copyright of the Architect.

Do Not Scale The Drawings.
 All Drawings, Specifications And Related Documents Are The Copyright Of The Architect And Must Be Returned Upon Request.

Reproduction Of Drawings, Specifications And Related Documents In Part Or Whole Is Forbidden Without The Architects Written Permission.

This Drawing Is Not To Be Used For Construction Until Signed By The Architect.



No.	Issued For	Date
1	ISSUED FOR REVIEW	12/18/19
2	ISSUED FOR PERMIT & TENDER	12/05/22
3	PROVISION FOR WIFI ADDED	01/31/23
4	ISSUED FOR SPA & BLDG PERMIT	09/12/23



alaimo
 architecture
 inc.

202-8551 WESTON ROAD
 Woodbridge, ON L4L 9R4
 P: (905)856-2840
 F: (905)856-4912
 info@alaimoarchitecture.com

Drawing Title
POWER & SYSTEMS LAYOUT

Project
New Tecumseth Fire Station No. 4
 6365 14TH LINE (NORTH PART LOT 8 CONVESSION 1 & 3 PART OF 51R26286) NEW TECUMSETH, ON L9R 1V4

Scale
 1:75
 Issued by
D11-TE-046
 File No.
 Plot Date

The Design, including, but not limited to: Spatial Relationships, Orientation & General configuration of the project are the Copyright of the Architect.

Do Not Scale The Drawings.
All Drawings, Specifications And Related Documents Are The Copyright Of The Architect And Must Be Returned Upon Request.

Reproduction Of Drawings, Specifications And Related Documents In Part Or Whole Is Forbidden Without The Architects Written Permission.

This Drawing Is Not To Be Used For Construction Until Signed By The Architect.



alaimo
architecture
inc.

202-8651 WESTON ROAD
Woodbridge, ON L4L 9R4
P: (905)856-2840
F: (905)856-4912

info@alaimoarchitecture.com

LEGEND & SCHEDULES

Project
**New Tecumseth
Fire Station No. 4**
6375 14TH LINE (NORTH PART LOT 8
& 3 OF 51R26286)
ALLISTON, ON L9R 1V4

Scale
Issued by
D11-TE-046
File No.
Plot Date

EMERGENCY & EXIT FIXTURE SCHEDULE		
TYPE	DESCRIPTION	LAMPS
☒	UNIVERSAL EXIT LIGHT WALL/CEILING MOUNTED SINGLE FACE 120V AC "RUNNING MAN" TYPE	LED
☒	UNIVERSAL EXIT LIGHT WALL/CEILING MOUNTED DOUBLE FACE FACE 120V AC "RUNNING MAN" TYPE	LED
☒	EMERGENCY LIGHTING BATTERY UNIT C/W TWO EMERGENCY HEADS 36W 120/347V AC, 12V DC	2-12W0

OCCUPANCY SENSOR LEGEND	
SYMBOL	DESCRIPTION
OS 1	PIR CEILING MOUNTED 1200 SQ FT SENSOR, 24V DC PROVIDE ONE POWER PACK FOR UP TO 4 SENSORS.
OS	PIR WALL MOUNTED 12 FT SENSOR, MANUAL OVERRIDE, 24V DC

SECURITY SYSTEM LEGEND	
SYMBOL	DESCRIPTION
ES	PROVISION FOR ELECTRIC STRIKE
CR	PROVISION FOR CARD READER
DC	PROVISION FOR DOOR CONTACT

ABBREVIATIONS	
SYMBOL	DESCRIPTION
AFF	DENOTES ABOVE FINISHED FLOOR TO TOP OF OUTLET BOX
C	DENOTES CEILING MOUNTED
ER	DENOTES EXISTING RELOCATED
EX	DENOTES EXISTING
EF	DENOTES EXHAUST FAN
FR	DENOTES FRACTIONAL
NF	DENOTES NON FUSIBLE
NIC	DENOTES NOT IN CONTRACT
NL	DENOTES NIGHT LIGHT
N	DENOTES NEW
S & I	DENOTES SUPPLIED & INSTALLED

UNLESS OTHERWISE NOTED, MOUNT DEVICES TO THE FOLLOWING HEIGHTS: ALL DIMENSIONS TO CENTER LINE AND ABOVE FINISHED FLOOR:
RECEPTACLES: NOT LOWER THAN 400mm
SWITCHES: 1100mm
VOICE OUTLETS: NOT LOWER THAN 400mm
DATA OUTLETS: NOT LOWER THAN 400mm

POWER & DEVICE SCHEDULE	
SYMBOL	DESCRIPTION
⊕	STANDARD 15A U-GROUND DUPLEX RECEPTACLE, 120V, DECORA WHITE C/W WHITE COVER PLATE MOUNTING HEIGHT: AS NOTED
⊕ 20	STANDARD 20A U-GROUND DUPLEX RECEPTACLE, 120V, DECORA WHITE C/W WHITE COVER PLATE MOUNTING HEIGHT: AS NOTED
GFI	GROUND FAULT INTERRUPTION 15A U-GROUND DUPLEX RECEPTACLE, 120V, MOUNTING HEIGHT: AS NOTED
USB	STANDARD 15A U-GROUND DUPLEX RECEPTACLE, 120V, C/W TWO USB PORTS
⊕	STANDARD 15A U-GROUND DUPLEX RECEPTACLE, 120V, DECORA WHITE C/W WHITE COVER PLATE MOUNTING HEIGHT: AS NOTED
⊕	STANDARD 15A U-GROUND DUPLEX RECEPTACLE, 120V, DECORA WHITE C/W WHITE COVER PLATE MOUNTING HEIGHT: AS NOTED
⊕	STANDARD 15A U-GROUND QUAD RECEPTACLE, 120V, DECORA WHITE C/W WHITE COVER PLATE MOUNTING HEIGHT: AS NOTED
⊕	FLOOR FLUSH MOUNTED QUAD 15A 120V OUTLET CER #26FB C/W FLANGE & BRASS COVER PLATE
⊕	SINGLE POLE LIGHT SWITCH, 120V DECORA WHITE C/W WHITE COVER PLATE MOUNTING HEIGHT: AS NOTED
⊕ 3 (4)	SINGLE POLE LIGHT SWITCH, 120V 3-WAY, (4-WAY) DECORA WHITE C/W WHITE COVER PLATE MOUNTING HEIGHT: AS NOTED
⊕ D	SINGLE POLE DIMMER LIGHT SWITCH, 120V 4-WAY SWITCH DECORA WHITE C/W WHITE COVER PLATE MOUNTING HEIGHT: AS NOTED
⊕ OS	OCCUPANCY SENSOR LIGHT SWITCH, 120V MOUNTING HEIGHT: AS NOTED
⊕	SPECIAL OUTLET AS NOTED - DIRECT CONN. ONLY (LOCAL DISCONNECT NOT INCLUDED)
⊕	LOCAL DISCONNECT SWITCH
⊕	SINGLE PHASE MOTOR OUTLET NUMBER DENOTES KILOWATTS OR HP
⊕	THREE PHASE MOTOR OUTLET NUMBER DENOTES KILOWATTS OR HP
⊕	ELECTRIC FORCED FLOW HEATER, 4KW, 208V/1φ S & I BY THIS CONTRACTOR ACCORDING TO C/W THERMOSTAT, WHITE IN COLOUR
⊕	PROVISION FOR A VOICE/DATA OUTLET C/W 3/4" WITH FULL STRING TO CEILING SPACE S & I OF TERMINATING DEVICES BY OTHERS.
⊕	PROVISION FOR A DATA OUTLET C/W 3/4" WITH FULL STRING TO CEILING SPACE S & I OF TERMINATING DEVICES BY OTHERS.
⊕	PUSH BUTTON
⊕	PROVISION FOR PA SYSTEM SPEAKER

INTERIOR FIXTURE SCHEDULE		
SYMBOL	DESCRIPTION	LAMPS
F1	RECESSED 1"x4" LED FIXTURE C/W SMOOTH LENS, 120V LED DRIVER STANPRO #L30E-A-LP530P-QJ-3C-120-3780	LED
F2	RECESSED MOUNTED 1"x4" LED FIXTURE FOR WET/DAMP AREA, 120V LED DRIVER STANPRO #VTL-L-53-W-3C	LED
F3	SIMILAR TO TYPE "F2" EXCEPT CHAIN HUNG 120V LED DRIVER STANPRO #VTL-L-53-W-3C	LED
F4	LINEAR 8FT STRIP LED FIXTURE 120V LED DRIVER STANPRO #L23TL-96-L-56A-A-35K MOUNTING HEIGHT TO BE CONFIRMED	LED
F5	TRILITE LED "STOP/GO" - INTERLOCKED WITH O/H DOOR, MH: 2440 AFF ON DRIVER'S SIDE 120V, DEWANO #5510-24R-LED	LED
F6	WALL MOUNTED READING LIGHT C/W FLEXIBLE NECK, 120V LED DRIVER (SW), LIT40 RECTANGULAR WALL MTD LED READING LIGHT	LED
F7	RECESSED MOUNTED 4" ROUND DOWN LIGHT 120V LED DRIVER STANPRO#CD4R-G2-PS30/30WH 7/9/12--120-3000	LED
F8	RECESSED MOUNTED 4" LED DOWNLIGHT 120V LED DRIVER STANPRO#CD4R-G2-PS30/30WH 12/15/20 120-3000/3500/400 1080/1440/2000	LED
F9	RECESSED MOUNTED 4" LED DOWNLIGHT 120V LED DRIVER STANPRO#CD4R-G2-PS30/30WH 12/15/20 120-3000/3500/400 1080/1440/2000	LED
F10	CONFIGURABLE LED STRIP 120V LED DRIVER STANPRO #L23TL-96-L-53A-A-35K-L6 C/W SUITABLE CORD	LED
F11	LINEAR LED RECESSED FIXTURE STANPRO #L3KOU-LENGTH-L-SSA-A-35K-L6 C/W SUITABLE CORD & 120V LED DRIVER	LED
L11	OPTION 1: TAPE LIGHT STANPRO #TAPE/16-A-4-4/30K/24V1P22/180//8mm/STD. OPTION 2: LED RECESSED STANPRO # PREFERRED OPTION L3KOU-LENGTH-L-375m-90-120-35K	LED

- GENERAL ELECTRICAL NOTES:**
- SUPPLY AND INSTALL ALL ITEMS, INCLUDE ALL LABOUR, EQUIPMENT, MATERIALS AND TOOLS NECESSARY TO COMPLETE ALL SYSTEM SHOWN ON THE DRAWINGS.
 - ARRANGE A SITE VISIT AND INSPECT ALL DRAWINGS. NO ALLOWANCE SHALL BE MADE FOR FAILURE TO DO SO.
 - PROVIDE ALL CUTTING & PATCHING REQUIRED FOR THE WORK OF THIS TRADE.
 - OBTAIN ALL PERMITS AS REQUIRED. PAY ALL FEES.
 - UPON COMPLETION OF THE WORK, PROVIDE THE FINAL UNCONDITIONAL CERTIFICATE OF ACCEPTANCE FROM ONTARIO HYDRO INSPECTION DEPARTMENT.
 - CLEAN UP ALL DEBRIS ON A DAILY BASIS AND UPON COMPLETION OF CONTRACT. COOPERATE WITH ALL OTHER TRADES.
 - ALL WORK SHALL BE IN ACCORDANCE WITH THE LATEST EDITION OF THE ELECTRICAL CODE, THE RULES & BYLAWS OF ALL AUTHORITIES, HAVING JURISDICTION.
 - ALL MATERIAL AND EQUIPMENT TO BE NEW, CSA APPROVED, AND BE OF COMMERCIAL GRADE.
 - SUBMIT 3 COPIES OF SHOP DRAWINGS FOR APPROVAL OF ALL EQUIPMENT.
 - PROVIDE TEMPORARY ELECTRICAL POWER FOR THE WORK OF THE TRADES AS REQUIRED BY THE GENERAL CONTRACTOR.
 - PROVIDE LAMACOD LABELS ON ALL ELECTRICAL EQUIPMENT MOUNTED AND CONNECTED. CIRCUIT DIRECTORIES FOR PANELBOARDS TO BE TYPED/WITTEN.
 - PROVIDE A ONE-YEAR GUARANTEE ON ALL MATERIALS, AND LABOUR FROM THE DAY OF ACCEPTANCE BY THE OWNER.
 - SUBMIT "AS BUILT" DRAWINGS WITH ONE MARKED-UP SET OF WHITE PRINTS TO THE OWNER AFTER COMPLETION OF WORK.
 - ALL WIRING TO BE COPPER RW90 OR T90 INSULATION UNLESS NOTED OTHERWISE. BRANCH WIRING SHALL BE #12 AWG UP TO 70FT (21.5m) AND #10 AWG FROM 71FT (21.6m) TO 120FT (36.6m).
 - INSTALL ALL WIRING CONCEALED IN CONDUIT, BX CABLE MAY BE USED IN PARTITION WALLS. EMT CONDUIT IN CEILING SPACE MUST BE INDEPENDENTLY SUPPORTED FROM CEILING SYSTEM.
 - PROVIDE ALL OUTLET BOXES. PROVIDE SWITCHES AND RECEPTACLES.
 - THE OWNER HAS THE RIGHT TO RELOCATE OUTLETS WITHIN 10FT PRIOR TO ROUGHIN.
 - ALL EQUIPMENT TO BE GROUNDED TO THE REQUIREMENTS OF THE ELECTRICAL SAFETY CODE AND THE INSPECTION AUTHORITIES.

RP-'A' SCHEDULE											
CCT	BRKR	DESCRIPTION	LOAD/PH			LOAD/PH			DESCRIPTION	BRKR	CCT
			A	B	C	A	B	C			
1	20	EXTERIOR POLE LTD	1.6		0.3				TRAINING RM FLOOR REC (3)	15	2
3	20	EXTERIOR LTG (PHCELL)	1.5		0.2				TRAINING RM FLOOR REC (2)	15	4
5	20	CANDY LGT (PHCELL)	1.3		0.2				TRAINING RM FLOOR REC (2)	15	6
7	20	PYLON SIGN	1.2		0.2				TRAINING RM FLOOR REC (2)	15	8
9	20	GENERATOR SET BATT CHARGER	1.2		0.2				TRAINING RM FLOOR REC (2)	15	10
11	20	GENERATOR SET HEATER	1.2		0.2				TRAINING RM FLOOR REC (2)	15	12
13	15	EXIT/EMERG LGT	0.3		0.2				TRAINING RM FLOOR REC (2)	15	14
15	20	COMMON AREA LTG	1.2		0.4				TRAINING RM PROJECTOR & SCR.N	15	16
17	20	ADMIN AREA LTG	1.0		1.0				TRAINING RM REC (4)	15	18
19	20	ADMIN AREA TRAINING LTG	1.0		0.3				GEAR STORAGE REC (3)	15	20
21	20	LOCKERS AREA LTG	1.0		0.2				WORKSHOP REC (2)	15	22
23	20	APPARATUS BAY LTG	0.9		0.9				SPARE	15	24
25	20	APPARATUS BAY LTG	0.9						SPARE	20	26
27	20	APPARATUS BAY LTG	0.9						SPARE	20	28
29	20	APPARATUS BAY LTG	0.9		0.9				GENERAL REC (3)	15	30
31	15	APPARATUS BAY NIGHT LTG	0.3		0.6				OFFICE AREA NIGHT LIGHT	15	32
33	15	CONTACTORS	0.2		0.1				REC @ RTU-4	20	34
35	15	STOP/GO LIGHTS	0.6		0.4				REC @ RTU-3	20	36
37	15		0.6		1.5				DRYER ROOM 117	30	38
39	15	EF-2	0.6		1.5					30	40
41	15		0.6		1.2				WASHER ROOM 117	15	42
43	50		5.0		0.4				CAPTAIN RM TV SET	15	44
45	50	GEAR WASHER	5.0		0.2				CAPTAIN RM REC (1)	15	46
47	50	APPARATUS BAY REELS	5.0		0.3				CAPTAIN RM REC (3)	15	48
49	15	APPARATUS BAY REELS	0.6		0.2				RADIO RM REC (1)	15	50
51	20	APPARATUS BAY REC (5)	1.0		0.2				RADIO RM REC (1)	15	52
53	15		0.4		0.2				RADIO RM REC (1)	15	54
55	15	WORKSHOP REC (1)	0.6						SPARE	20	56
57	15	WORKSHOP REC (1)	0.6		0.4				RADIO RM GENERAL REC (4)	15	58
59	20	REC AT RTU-5	0.6		0.1				GENERAL REC (4)	15	60
61	25	FF HTR SCBA RM	2.0		0.6				FF HTR VESTIBULE	15	62
63	25		2.0		0.6				FF HTR VESTIBULE	15	64
65	20	REC @ RTU-6	0.1		0.4				DOOR OPERATOR MAIN VEST	15	66
67	25	RTU-6	1.6		0.3				PUMP P-1	15	68
69	25		1.6		0.1				EXTERIOR GFI (1)	15	70
71	25	EF-7 LAUNDRY ROOM	0.3		0.9				EF-8	15	72
73	15	BAY CLOCK	0.1		0.3				WASHRM GFI (3)	15	74
75	15	IR HEATERS	0.6		0.6				IT ROOM REC (1)	15	76
77	15	OIL INTERCEPTOR PANEL	0.4		0.6				IT ROOM REC (1)	15	78
79	15	MOTOR DAMPER	0.1		0.6				IT ROOM REC (1)	15	80
81	20	APPARATUS BAY REC (1)	0.1		0.4				IT RM PA SYSTEM	15	82
83	15	EXTERIOR REC (1)	0.3		0.1				EF-4 IT ROOM & DOOR OP'R	15	84
85	15	HWT MECH RM (1)	0.5		0.2				EF-9 LAUNDRY ROOM	15	86
87	15	REC MECH RM (1)	0.1		0.4				GAS DETECTION PANEL	15	88
89	15	REC @ PANEL (1)	0.1							20	90
91	60		4.0							92	94
93	60		4.0							96	98
95	60				2.6					98	100
97	30									100	102
99	30	SPARE								100	104
101	30									102	106
103	15	APPARATUS BAY REELS	0.6							104	108
105	20	BUNKER GEAR RM REC (2)	0.2		0.2					106	110
107	15	WSHRM 118 & 119 GFI (2)	0.2							108	112
109	15	WSHRM 118 & 119 REC (2)	0.2							110	114
111	15									112	116
113	15	EF- EXTRACTION EXHAUST								114	118
115	15									116	120
117	15	EF-6								118	122
119	15	WATER FAUNTAIN								120	
			LOCATION	AMPS	VOLTS	PHASE/WIRE	TYPE	MOUNTING	MAINS		
			ELECTRICAL/MECHANICAL RM	400	120/208	3/4		SURFACE	LUGS ONLY		
											TOTAL CONNECTED [DEMAND] LOAD: 69.9[55.1]KW

RP-'B' SCHEDULE											
CCT	BRKR	DESCRIPTION	LOAD/PH			LOAD/PH			DESCRIPTION	BRKR	CCT
			A	B	C	A	B	C			
1	15	DAY ROOM AREA LTG	1.0		1.6				RTU-2	15	2
3	15	DISHWASHER	1.0		1.6					15	4
5	15	KITCHEN GFI REC (1)	1.0		0.1				REC @ RTU-1	20	6
7	15	KITCHEN FRIDGE	0.8		0.1				REC @ RTU-2	20	8
9	15	GAS RANGE	0.1		0.2				EXTERIOR REC (2)	15	10
11	15	DORM REC (5)	0.5		0.1				SECURITY	15	12
13	15	FITNESS RM REC (2)	0.2		0.1				CORRIDOR REC (1)	15	14
15	20	FITNESS RM EQUIPMENT	0.8		0.4				DAY ROOM REC (4)	20	16
17	20	COUNTER REC (1)	0.8		0.1				REC @ RTU-7	20	18
19	15	KITCHEN GFI REC (1)	1.0		0.3						