

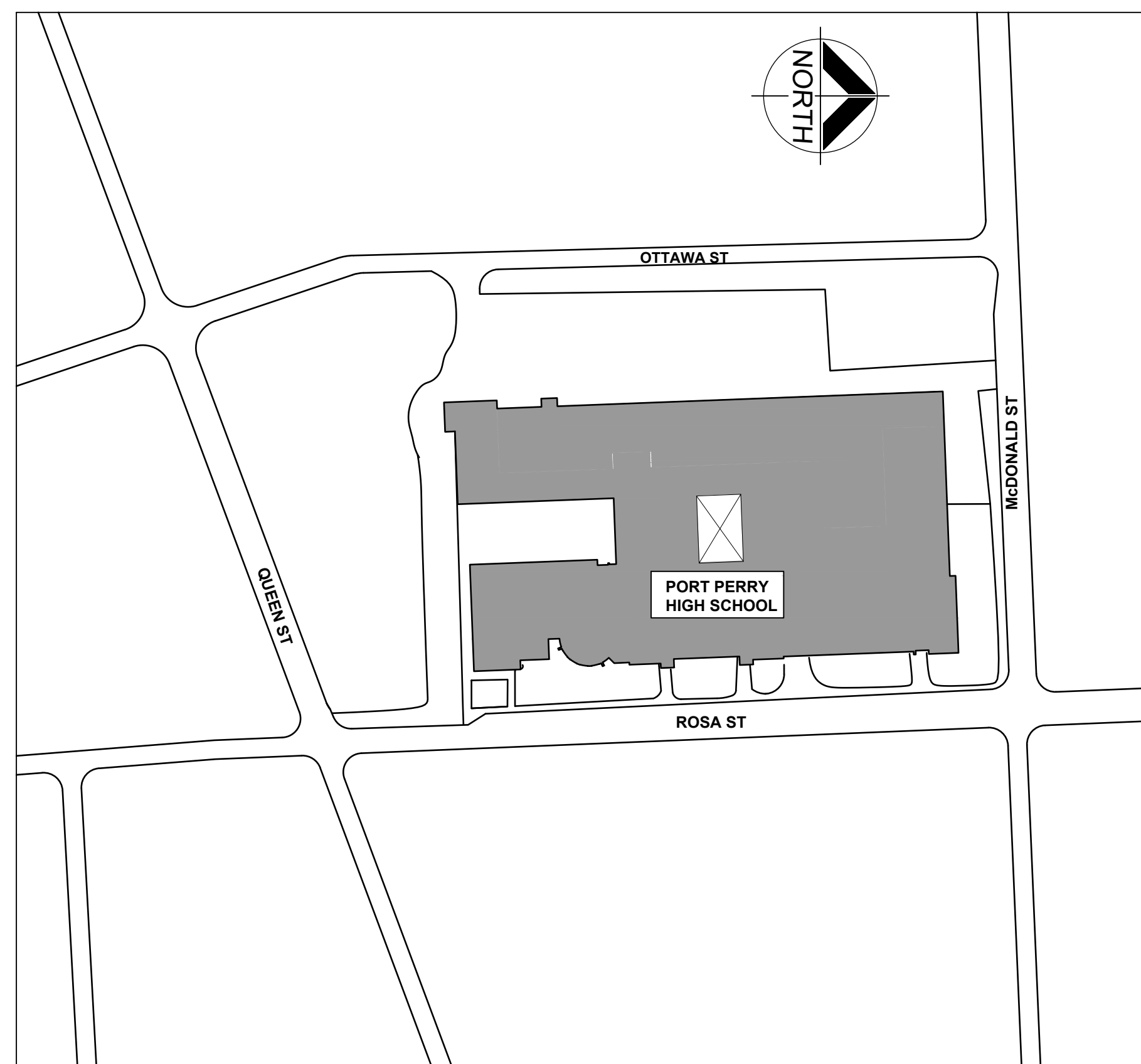
PARTIAL WINDOW REPLACEMENT - PHASE 4

PORT PERRY HIGH SCHOOL
 160 Rosa Street
 Port Perry, Ontario
 DURHAM DISTRICT SCHOOL BOARD

LIST OF DRAWINGS

ARCHITECTURAL

- A000 COVER SHEET, LIST OF DRAWINGS AND LOCATION PLAN
- A201 KEY PLANS
- A202 PART GROUND FLOOR AND PART SECOND FLOOR PLANS DEMOLITION
- A203 THIRD FLOOR PLAN DEMOLITION
- A204 PART GROUND FLOOR AND PART SECOND FLOOR PLANS
- A205 THIRD FLOOR PLAN AND PART GROUND FLOOR PLAN
- A301 ELEVATIONS
- A501 SECTION DETAILS
- A502 SECTION DETAILS
- A601 PLAN DETAILS
- A901 WINDOW ELEVATIONS



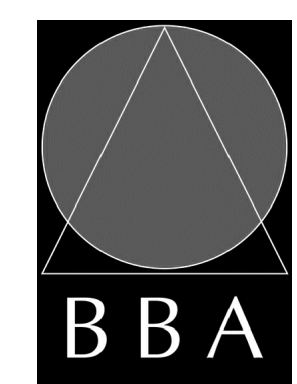
1 LOCATION PLAN
 A000 N.T.S.

DO NOT SCALE THE DRAWINGS.
 CHECK AND VERIFY ALL DIMENSIONS AT THE SITE.
 ALL DRAWINGS, SPECIFICATIONS AND RELATED DOCUMENTS ARE THE
 COPYRIGHT PROPERTY OF THE CONSULTANT AND MUST BE RETURNED
 UPON REQUEST. REPRODUCTION OF DRAWINGS IN PART OR WHOLE
 WITHOUT THE PERMISSION OF THE CONSULTANT IS FORBIDDEN.
 DRAWINGS ARE NOT TO BE USED FOR CONSTRUCTION UNTIL SIGNED
 AND SEALED BY THE CONSULTANT.



NO.	ISSUES	DATE	BY
1	ISSUED FOR REVIEW	DEC. 12, 2024	BBA
2	ISSUED FOR TENDER	JAN. 15, 2025	BBA

PARTIAL WINDOW REPLACEMENT -
 PHASE 4
 PORT PERRY HIGH SCHOOL
 160 Rosa Street,
 Port Perry, Ontario
 DURHAM DISTRICT SCHOOL BOARD



PROJECT NO. 21184.4

A000

DO NOT SCALE THE DRAWINGS.
CHECK AND VERIFY ALL DIMENSIONS AT THE SITE.
ALL DRAWINGS, SPECIFICATIONS AND RELATED DOCUMENTS ARE THE
COPYRIGHT PROPERTY OF THE CONSULTANT AND MUST BE RETURNED
UPON REQUEST. REPRODUCTION OF DRAWINGS IN PART OR WHOLE
WITHOUT THE PERMISSION OF THE CONSULTANT IS FORBIDDEN.
DRAWINGS ARE NOT TO BE USED FOR CONSTRUCTION UNTIL SIGNED
AND SEALED BY THE CONSULTANT.

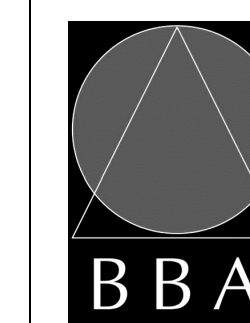


NO.	ISSUES	DATE	BY
1	ISSUED FOR REVIEW	DEC. 12, 2024	BBA
2	ISSUED FOR TENDER	JAN. 15, 2025	BBA

NO.	REVISIONS	DATE	BY
-----	-----------	------	----

PROJECT:
**PARTIAL WINDOW REPLACEMENT
AND UPGRADES
PHASE 4**
PORT PERRY HIGH SCHOOL
160 ROSA STREET
PORT PERRY, ONTARIO
DURHAM DISTRICT SCHOOL BOARD

DRAWING:
SECTION DETAILS



**BARRY BRYAN
ASSOCIATES**

Architects
Engineers
Project Managers

250 Water Street
Suite 201
Whitby, Ontario
L1N 0G5

Tel: (905) 666-5252
Fax: (905) 666-5256
e-mail: bba@bba-arch.com

DESIGN BY: BBA

DOC. CONTROL DATE:

DRAWN BY: LQ

% COMPLETE:

CHECKED BY: CS

INITIAL:

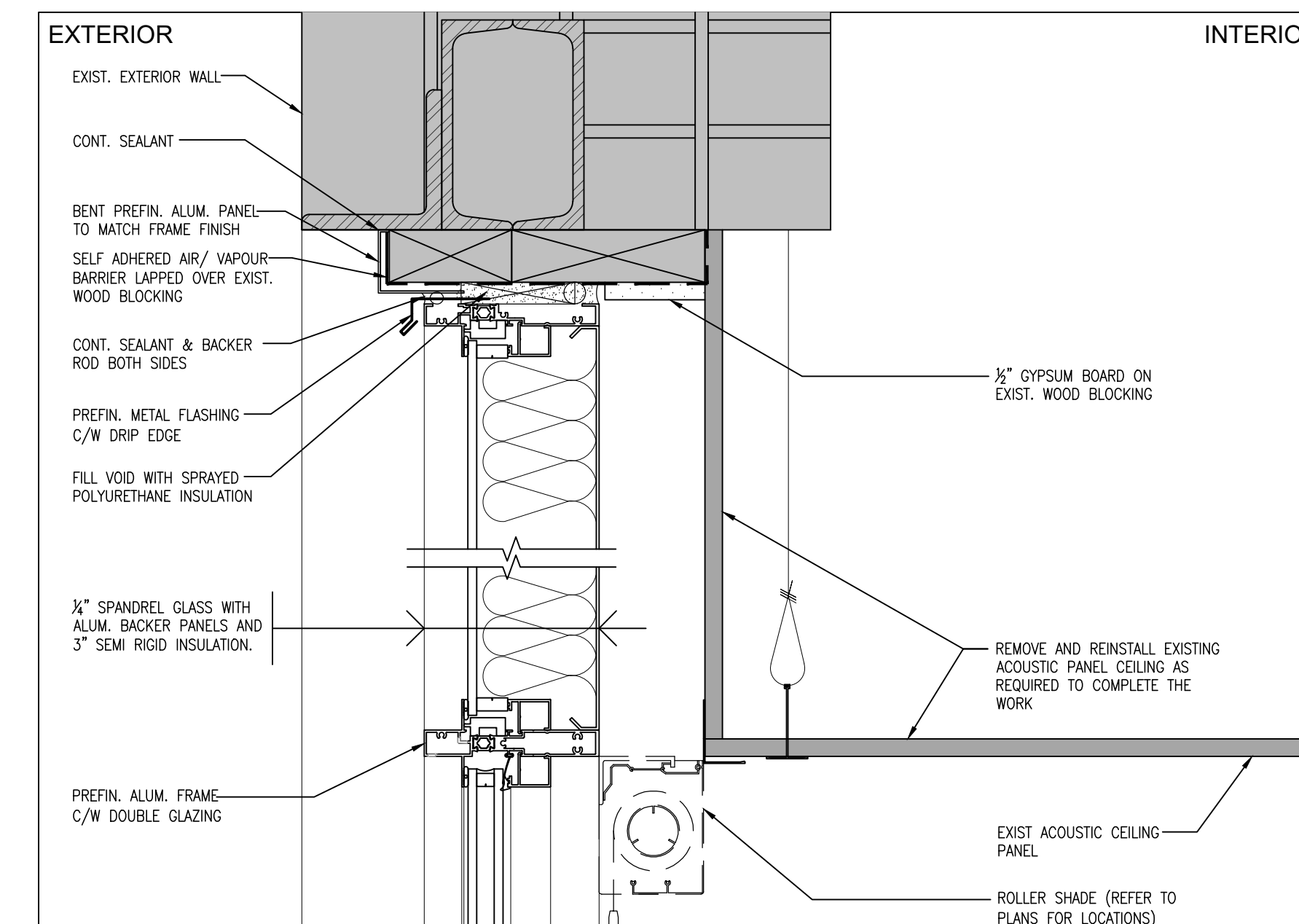
DATE: DEC. 2024

SCALE: AS NOTED

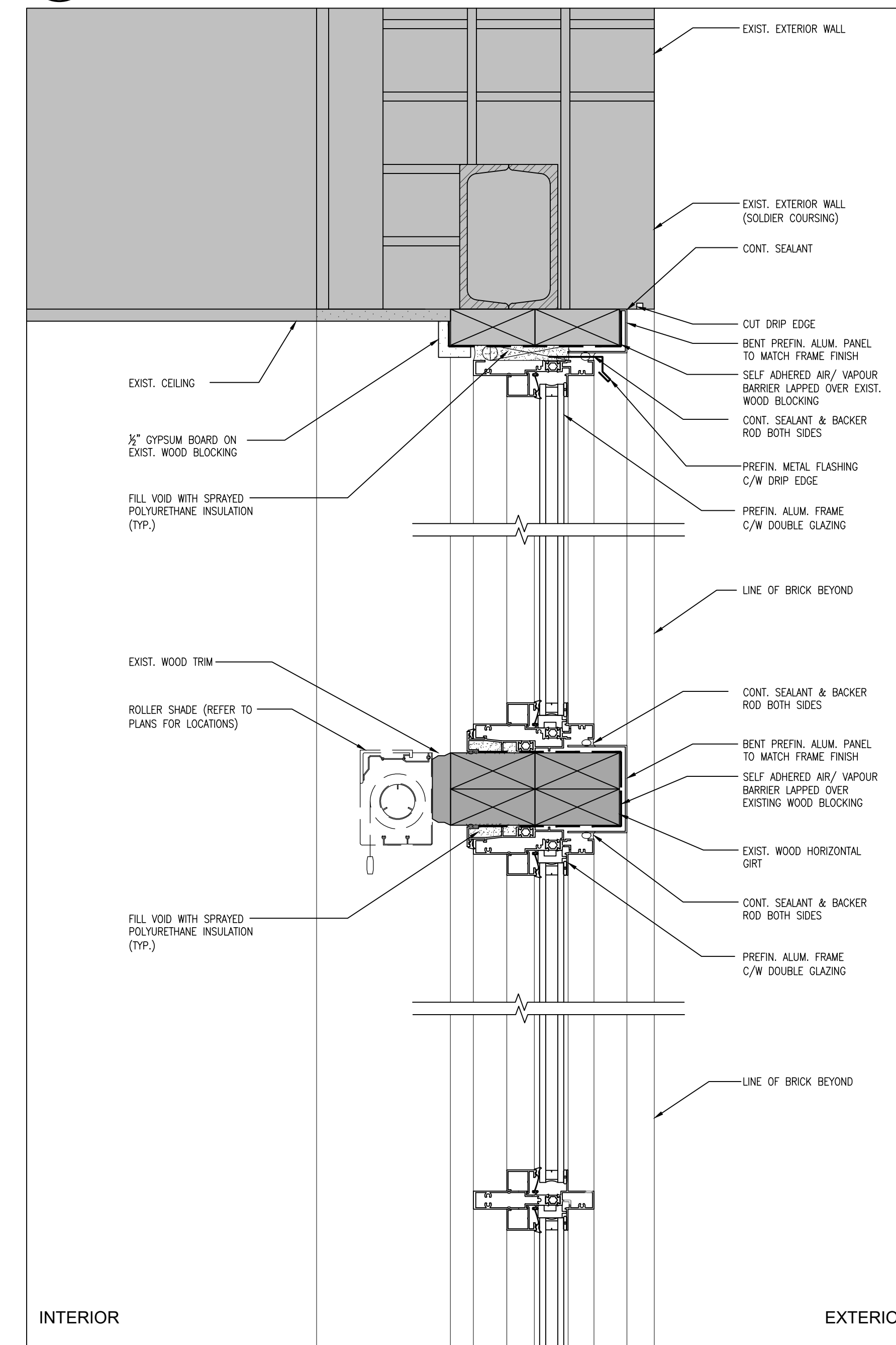
FILE:

PROJECT NO:
21184.4

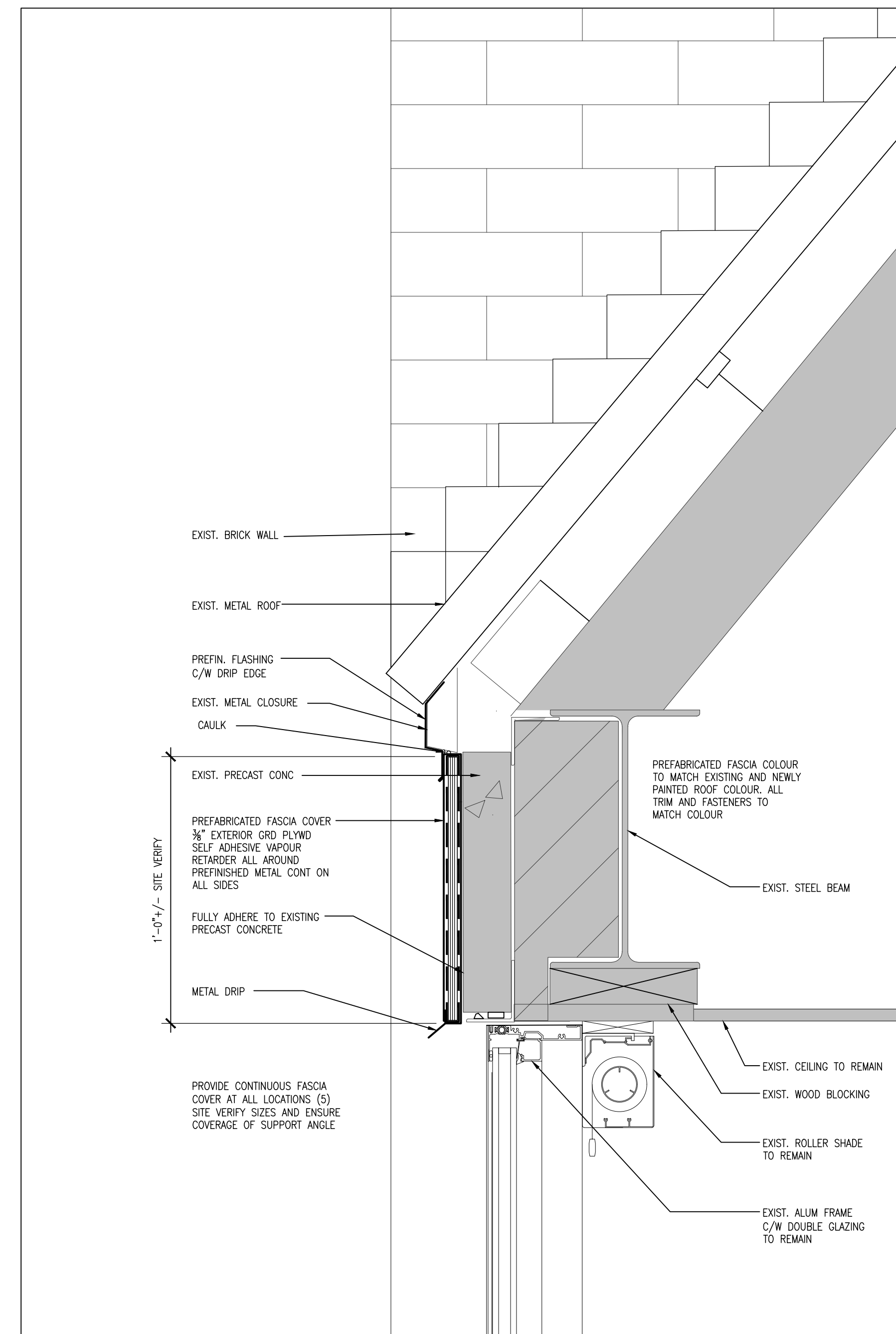
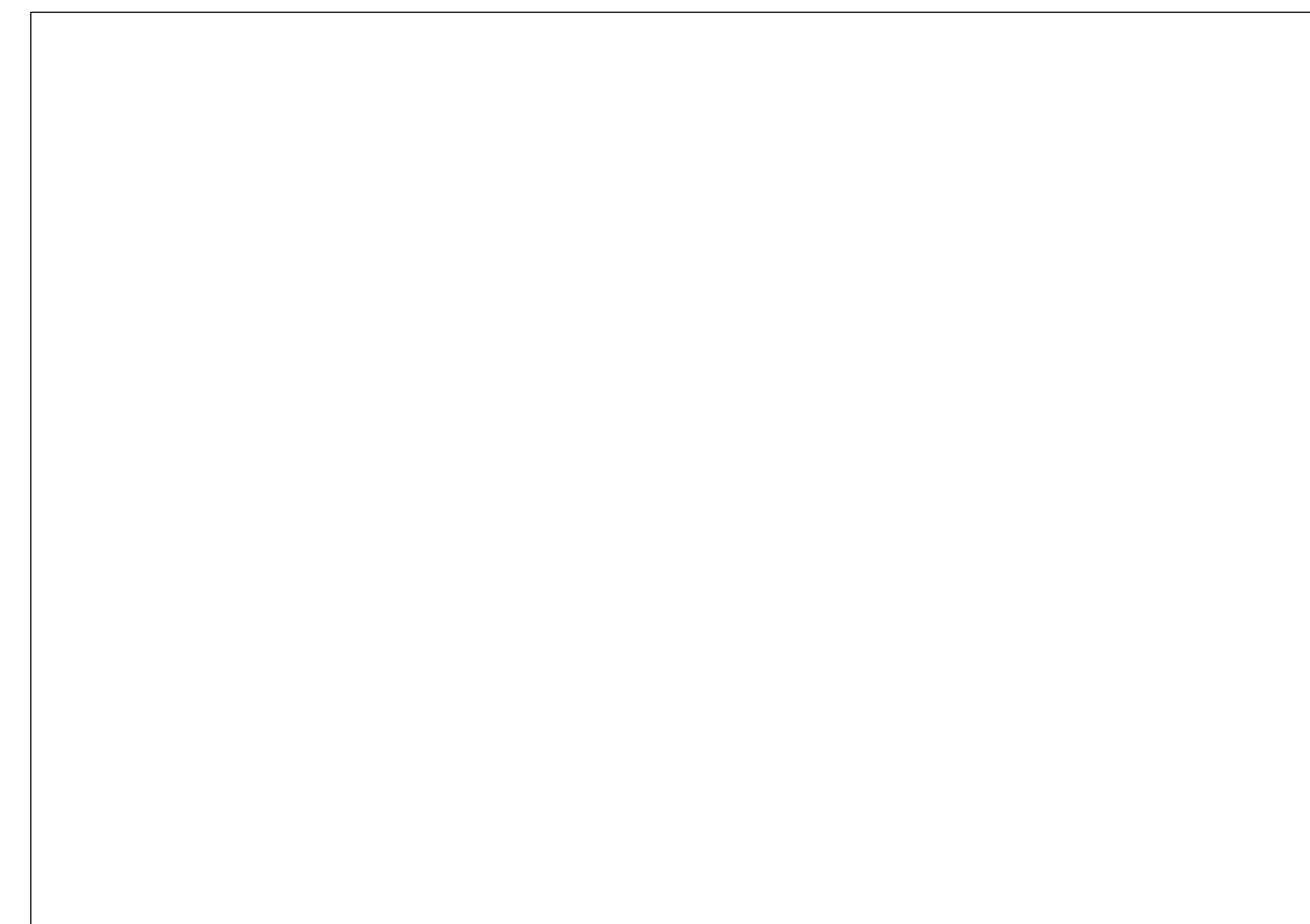
DRAWING NO:
A502



2 ALUM. WINDOW HEAD DETAIL
3" = 1'-0"



1 ALUM. WINDOW HEAD DETAIL
3" = 1'-0"



3 SECTION DETAIL
3" = 1'-0"

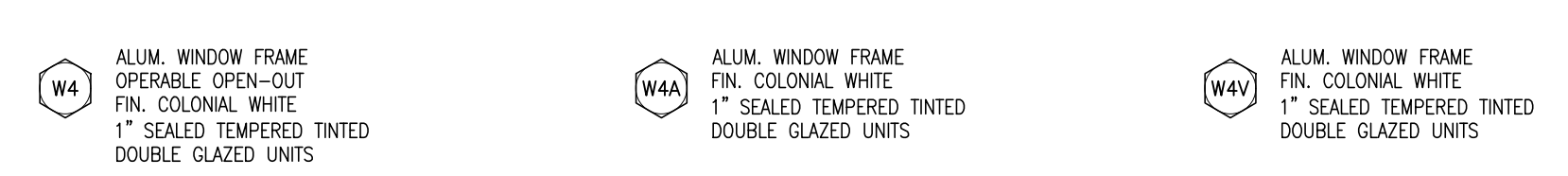
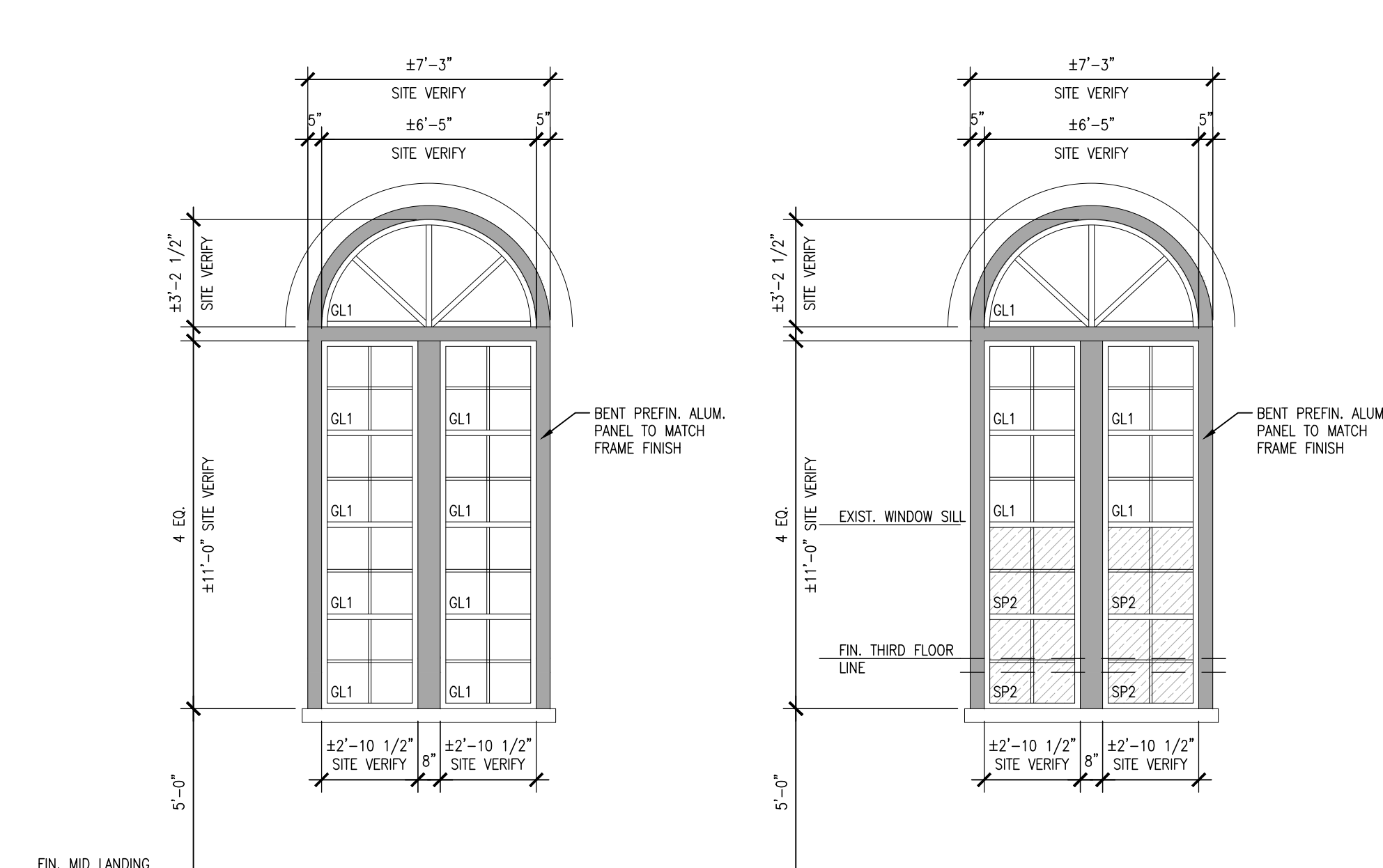
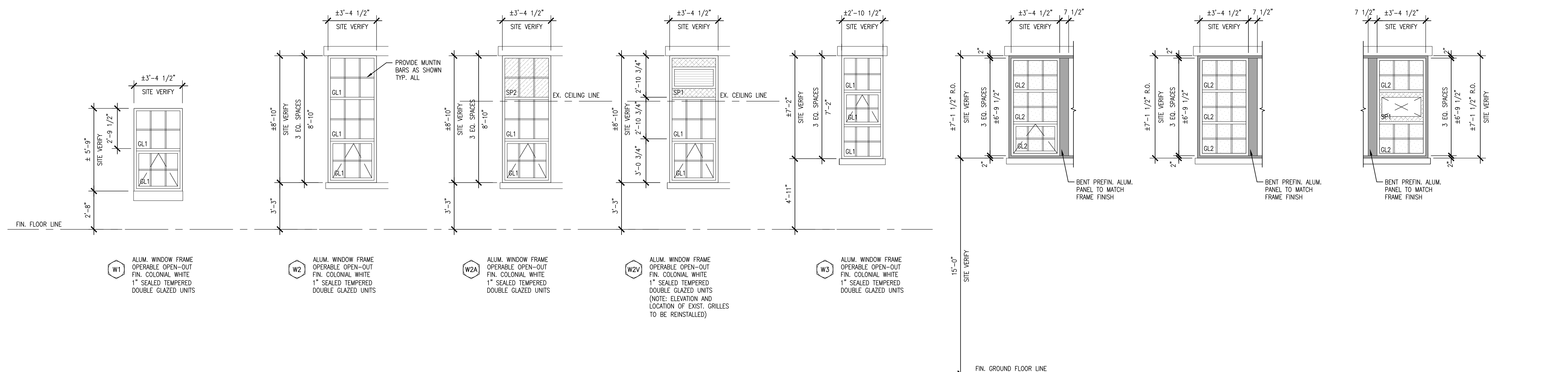
DO NOT SCALE THE DRAWINGS.
CHECK AND VERIFY ALL DIMENSIONS AT THE SITE.

ALL DRAWINGS, SPECIFICATIONS AND RELATED DOCUMENTS ARE THE
COPYRIGHT PROPERTY OF THE CONSULTANT AND MUST BE RETURNED
UPON REQUEST. REPRODUCTION OF DRAWINGS IN PART OR WHOLE
WITHOUT THE PERMISSION OF THE CONSULTANT IS FORBIDDEN.

DRAWINGS ARE NOT TO BE USED FOR CONSTRUCTION UNTIL SIGNED
AND SEALED BY THE CONSULTANT.



NO.	ISSUES	DATE	BY
1	ISSUED FOR REVIEW	DEC. 12, 2024	BBA
2	ISSUED FOR TENDER	JAN. 15, 2025	BBA



GLAZING LEGEND

GL1	1" SEALED TEMPERED DOUBLE GLAZED UNITS	
GL2	1" SEALED TEMPERED TINTED DOUBLE GLAZED UNITS	
SP1	1" SEALED, INSULATED ALUMINUM PANEL FINISH TO MATCH FRAMES.	
SP2	3/4" SPANDREL GLASS WITH ALUM. BACKER PANELS AND 3" SEMI RIGID INSULATION.	

W1 ALUM. WINDOW FRAME OPERABLE OPEN-OUT FIN. COLONIAL WHITE 1" SEALED TEMPERED DOUBLE GLAZED UNITS

W2 ALUM. WINDOW FRAME OPERABLE OPEN-OUT FIN. COLONIAL WHITE 1" SEALED TEMPERED DOUBLE GLAZED UNITS

W2A ALUM. WINDOW FRAME OPERABLE OPEN-OUT FIN. COLONIAL WHITE 1" SEALED TEMPERED DOUBLE GLAZED UNITS

W2V ALUM. WINDOW FRAME OPERABLE OPEN-OUT FIN. COLONIAL WHITE 1" SEALED TEMPERED DOUBLE GLAZED UNITS (NOTE: ELEVATION AND LOCATION OF EXIST. GRILLES TO BE REINSTALLED)

W3 ALUM. WINDOW FRAME OPERABLE OPEN-OUT FIN. COLONIAL WHITE 1" SEALED TEMPERED DOUBLE GLAZED UNITS

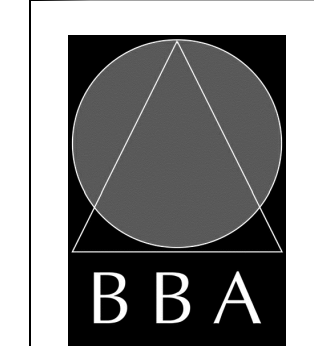
WS ALUM. WINDOW FRAME FIN. COLONIAL WHITE 1" SEALED TEMPERED DOUBLE GLAZED UNITS

WE ALUM. WINDOW FRAME FIN. COLONIAL WHITE 1" SEALED TEMPERED DOUBLE GLAZED UNITS

NO.	REVISIONS	DATE	BY

PROJECT:
PARTIAL WINDOW REPLACEMENT AND UPGRADES PHASE 4
PORT PERRY HIGH SCHOOL
160 ROSA STREET
PORT PERRY, ONTARIO
DURHAM DISTRICT SCHOOL BOARD

DRAWING:
WINDOW ELEVATIONS



BARRY BRYAN ASSOCIATES
Architects
Engineers
Project Managers
250 Water Street
Suite 201
Whitby, Ontario
L1N 0G5
Tel: (905) 666-5252
Fax: (905) 666-5256
e-mail: bba@bba-archeng.com

DESIGN BY: BBA	DOC. CONTROL DATE:
DRAWN BY: LQ	% COMPLETE:
CHECKED BY: CS	INITIAL:
DATE: NOV. 2024	
SCALE: AS NOTED	
FILE:	

PROJECT NO: **21184.4** DRAWING NO: **A901**