

NO.	REVISION	DATE
1	ISSUED FOR PERMIT AND TENDER	08/20/2011
2	ISSUED FOR PERMIT AND TENDER	08/20/2011

NO.	REVISION	DATE
1	ISSUED FOR PERMIT AND TENDER	08/20/2011
2	ISSUED FOR PERMIT AND TENDER	08/20/2011

CONTRACTOR SHALL CHECK ALL WORKERS ON THE WORK-UP FOR COMPLIANCE WITH THE PROVISIONS OF THE REGULATION. THIS DRAWING IS TO BE USED FOR THE PROVISIONS OF THE REGULATION. THIS DRAWING IS TO BE USED FOR THE PROVISIONS OF THE REGULATION. THIS DRAWING IS TO BE USED FOR THE PROVISIONS OF THE REGULATION.

PROFESSIONAL ENGINEER  
 ELECTRICAL ENGINEER  
 MECHANICAL ENGINEER

WCOA  
 WORTHINGTON CONSULTANTS  
 100 UNIVERSITY AVENUE, SUITE 100  
 TORONTO, ONTARIO M5G 1S7  
 TEL: (416) 593-8800  
 FAX: (416) 593-8801  
 WWW.WORTHINGTON.COM

TVS INTERNATIONAL, INC.  
 4150 SHEPPARD AVENUE EAST, SUITE 100  
 SCARBOROUGH, ONTARIO M1S 1T6  
 TEL: (416) 291-1111  
 FAX: (416) 291-1112  
 WWW.TVSI.COM

B+H  
 BUSHBY HARRIS  
 4150 SHEPPARD AVENUE EAST, SUITE 100  
 SCARBOROUGH, ONTARIO M1S 1T6  
 TEL: (416) 291-1111  
 FAX: (416) 291-1112  
 WWW.BUSHBYHARRIS.COM

PROFESSIONAL ENGINEER  
 ELECTRICAL ENGINEER  
 MECHANICAL ENGINEER

WCOA  
 WORTHINGTON CONSULTANTS  
 100 UNIVERSITY AVENUE, SUITE 100  
 TORONTO, ONTARIO M5G 1S7  
 TEL: (416) 593-8800  
 FAX: (416) 593-8801  
 WWW.WORTHINGTON.COM

TVS INTERNATIONAL, INC.  
 4150 SHEPPARD AVENUE EAST, SUITE 100  
 SCARBOROUGH, ONTARIO M1S 1T6  
 TEL: (416) 291-1111  
 FAX: (416) 291-1112  
 WWW.TVSI.COM

B+H  
 BUSHBY HARRIS  
 4150 SHEPPARD AVENUE EAST, SUITE 100  
 SCARBOROUGH, ONTARIO M1S 1T6  
 TEL: (416) 291-1111  
 FAX: (416) 291-1112  
 WWW.BUSHBYHARRIS.COM

PROFESSIONAL ENGINEER  
 ELECTRICAL ENGINEER  
 MECHANICAL ENGINEER

WCOA  
 WORTHINGTON CONSULTANTS  
 100 UNIVERSITY AVENUE, SUITE 100  
 TORONTO, ONTARIO M5G 1S7  
 TEL: (416) 593-8800  
 FAX: (416) 593-8801  
 WWW.WORTHINGTON.COM

TVS INTERNATIONAL, INC.  
 4150 SHEPPARD AVENUE EAST, SUITE 100  
 SCARBOROUGH, ONTARIO M1S 1T6  
 TEL: (416) 291-1111  
 FAX: (416) 291-1112  
 WWW.TVSI.COM

B+H  
 BUSHBY HARRIS  
 4150 SHEPPARD AVENUE EAST, SUITE 100  
 SCARBOROUGH, ONTARIO M1S 1T6  
 TEL: (416) 291-1111  
 FAX: (416) 291-1112  
 WWW.BUSHBYHARRIS.COM

PROFESSIONAL ENGINEER  
 ELECTRICAL ENGINEER  
 MECHANICAL ENGINEER

WCOA  
 WORTHINGTON CONSULTANTS  
 100 UNIVERSITY AVENUE, SUITE 100  
 TORONTO, ONTARIO M5G 1S7  
 TEL: (416) 593-8800  
 FAX: (416) 593-8801  
 WWW.WORTHINGTON.COM

TVS INTERNATIONAL, INC.  
 4150 SHEPPARD AVENUE EAST, SUITE 100  
 SCARBOROUGH, ONTARIO M1S 1T6  
 TEL: (416) 291-1111  
 FAX: (416) 291-1112  
 WWW.TVSI.COM

B+H  
 BUSHBY HARRIS  
 4150 SHEPPARD AVENUE EAST, SUITE 100  
 SCARBOROUGH, ONTARIO M1S 1T6  
 TEL: (416) 291-1111  
 FAX: (416) 291-1112  
 WWW.BUSHBYHARRIS.COM

PROFESSIONAL ENGINEER  
 ELECTRICAL ENGINEER  
 MECHANICAL ENGINEER

WCOA  
 WORTHINGTON CONSULTANTS  
 100 UNIVERSITY AVENUE, SUITE 100  
 TORONTO, ONTARIO M5G 1S7  
 TEL: (416) 593-8800  
 FAX: (416) 593-8801  
 WWW.WORTHINGTON.COM

TVS INTERNATIONAL, INC.  
 4150 SHEPPARD AVENUE EAST, SUITE 100  
 SCARBOROUGH, ONTARIO M1S 1T6  
 TEL: (416) 291-1111  
 FAX: (416) 291-1112  
 WWW.TVSI.COM

B+H  
 BUSHBY HARRIS  
 4150 SHEPPARD AVENUE EAST, SUITE 100  
 SCARBOROUGH, ONTARIO M1S 1T6  
 TEL: (416) 291-1111  
 FAX: (416) 291-1112  
 WWW.BUSHBYHARRIS.COM

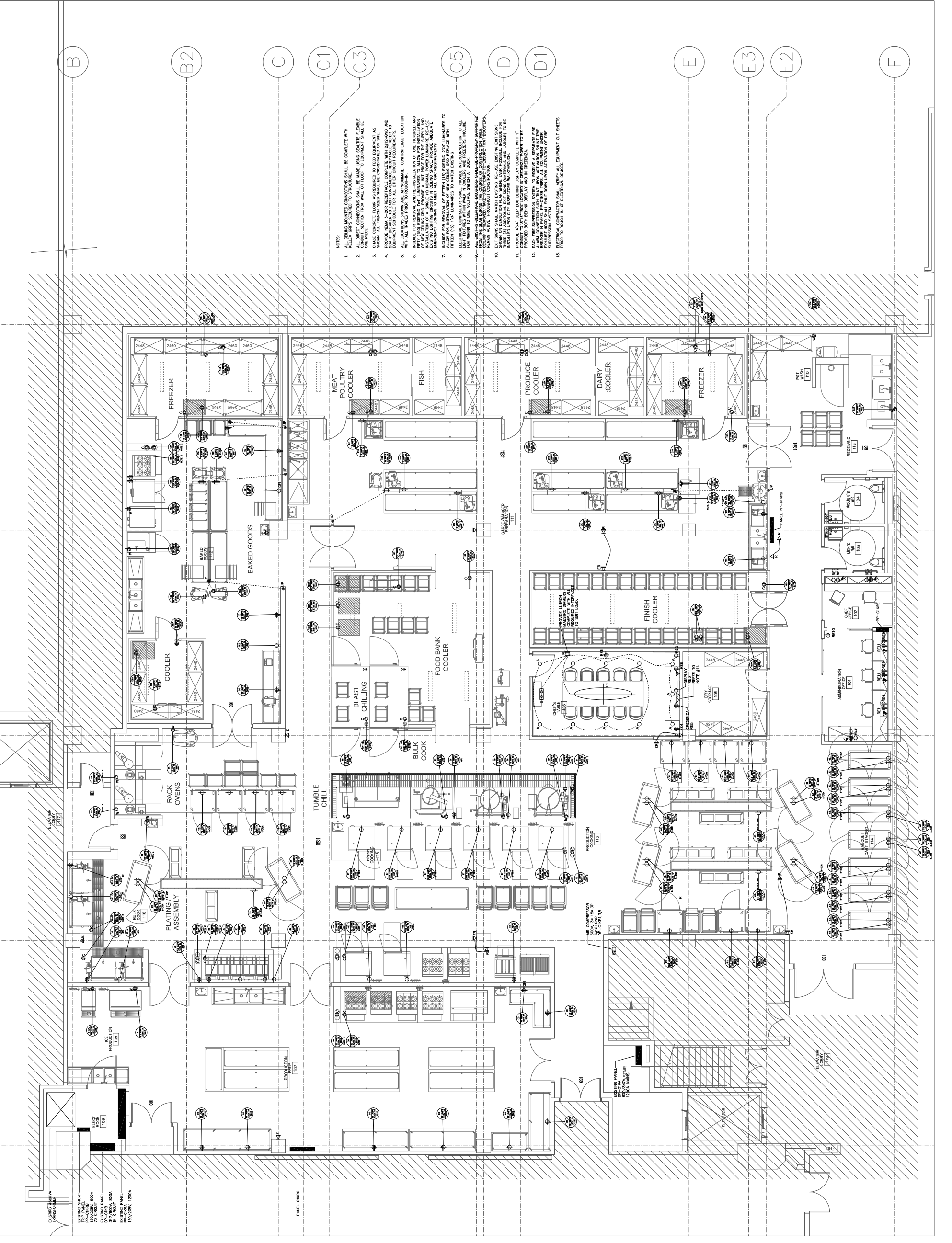
PROFESSIONAL ENGINEER  
 ELECTRICAL ENGINEER  
 MECHANICAL ENGINEER

WCOA  
 WORTHINGTON CONSULTANTS  
 100 UNIVERSITY AVENUE, SUITE 100  
 TORONTO, ONTARIO M5G 1S7  
 TEL: (416) 593-8800  
 FAX: (416) 593-8801  
 WWW.WORTHINGTON.COM

TVS INTERNATIONAL, INC.  
 4150 SHEPPARD AVENUE EAST, SUITE 100  
 SCARBOROUGH, ONTARIO M1S 1T6  
 TEL: (416) 291-1111  
 FAX: (416) 291-1112  
 WWW.TVSI.COM

B+H  
 BUSHBY HARRIS  
 4150 SHEPPARD AVENUE EAST, SUITE 100  
 SCARBOROUGH, ONTARIO M1S 1T6  
 TEL: (416) 291-1111  
 FAX: (416) 291-1112  
 WWW.BUSHBYHARRIS.COM

PROFESSIONAL ENGINEER  
 ELECTRICAL ENGINEER  
 MECHANICAL ENGINEER



- NOTES:
1. ALL CEILING MOUNTED CONNECTIONS SHALL BE COMPLETE WITH KELVIN DRIPS SECURED TO STRUCTURE.
  2. ALL CEILING MOUNTED CONNECTIONS SHALL BE COMPLETE WITH KELVIN DRIPS SECURED TO STRUCTURE. THIS DRAWING IS TO BE USED FOR THE PROVISIONS OF THE REGULATION. THIS DRAWING IS TO BE USED FOR THE PROVISIONS OF THE REGULATION. THIS DRAWING IS TO BE USED FOR THE PROVISIONS OF THE REGULATION.
  3. SHOW ALL TRUNKING SHALL BE COORDINATED ON SITE.
  4. PROVIDE NEMA 5-20R RECEPTACLE COMPLETE WITH 20A/240V AND GROUNDING FOR ALL EQUIPMENT PER THE MANUFACTURER'S REQUIREMENTS. WITH ALL TRUNKING PRIOR TO ROUGH-IN.
  5. ALL LOCATIONS SHOWN ARE APPROXIMATE. CONFIRM EXACT LOCATION WITH ALL TRUNKING PRIOR TO ROUGH-IN.
  6. PROVIDE ALL TRUNKING SHALL BE COORDINATED ON SITE. PROVIDE ALL TRUNKING SHALL BE COORDINATED ON SITE. PROVIDE ALL TRUNKING SHALL BE COORDINATED ON SITE.
  7. ALLOW FOR REMOVAL OF FRESH (10) EXISTING 2" X 4" LUMBERAS TO ALL LOCATIONS SHOWN ARE APPROXIMATE. CONFIRM EXACT LOCATION WITH ALL TRUNKING PRIOR TO ROUGH-IN.
  8. ALL TRUNKING SHALL BE COORDINATED ON SITE. PROVIDE ALL TRUNKING SHALL BE COORDINATED ON SITE. PROVIDE ALL TRUNKING SHALL BE COORDINATED ON SITE.
  9. PROVIDE ALL TRUNKING SHALL BE COORDINATED ON SITE. PROVIDE ALL TRUNKING SHALL BE COORDINATED ON SITE. PROVIDE ALL TRUNKING SHALL BE COORDINATED ON SITE.
  10. EXISTING SHALL MATCH EXISTING. RE-USE EXISTING DOT BINS WHERE APPLICABLE. PROVIDE ALL TRUNKING SHALL BE COORDINATED ON SITE. PROVIDE ALL TRUNKING SHALL BE COORDINATED ON SITE. PROVIDE ALL TRUNKING SHALL BE COORDINATED ON SITE.
  11. PROVIDE ALL TRUNKING SHALL BE COORDINATED ON SITE. PROVIDE ALL TRUNKING SHALL BE COORDINATED ON SITE. PROVIDE ALL TRUNKING SHALL BE COORDINATED ON SITE.
  12. PROVIDE ALL TRUNKING SHALL BE COORDINATED ON SITE. PROVIDE ALL TRUNKING SHALL BE COORDINATED ON SITE. PROVIDE ALL TRUNKING SHALL BE COORDINATED ON SITE.
  13. PROVIDE ALL TRUNKING SHALL BE COORDINATED ON SITE. PROVIDE ALL TRUNKING SHALL BE COORDINATED ON SITE. PROVIDE ALL TRUNKING SHALL BE COORDINATED ON SITE.