

APPENDIX B: DEFICIENCY PHOTOS



Picture 1: Black Flexible Conduit from Junction Box to Camera at the door
Location: Basement Stair #2
Drawing Reference: DWG 504 Note 14



Picture 2: Existing Conduit installed against Plumbing Pipe
Location: Basement Corridor
Drawing Reference: DWG 504 Note 15



Picture 3: Junction Box Placed in the Incorrect Orientation
Location: First Floor Above Double Doors to C164
Drawing Reference: DWG 505 Note 20



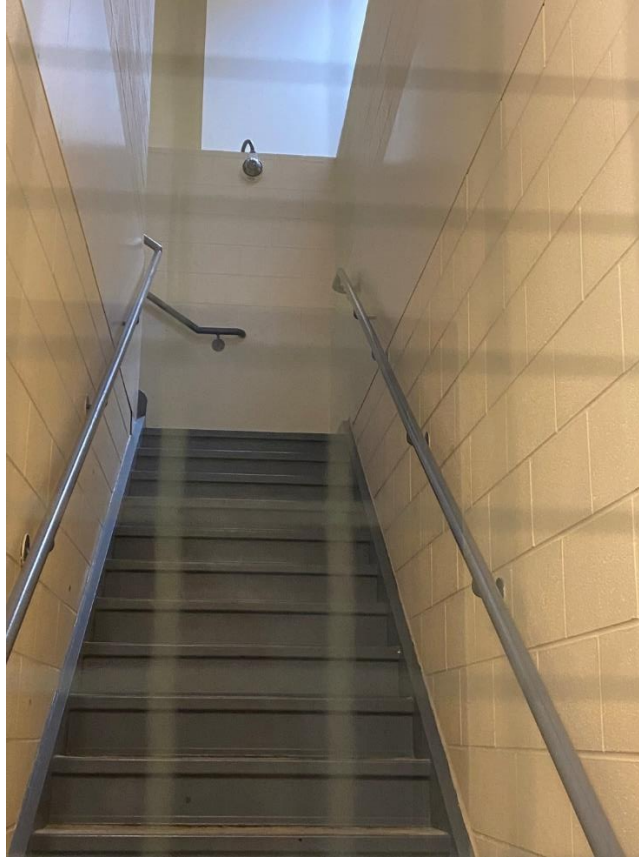
Picture 4: Junction Box with Punchout
Location: First Floor Corridor by C168
Drawing Reference: DWG 505 Note 18



Picture 5: Black Flexible Conduit from Junction Box to Camera
Location: First Floor C156
Drawing Reference: DWG 505 Note 19



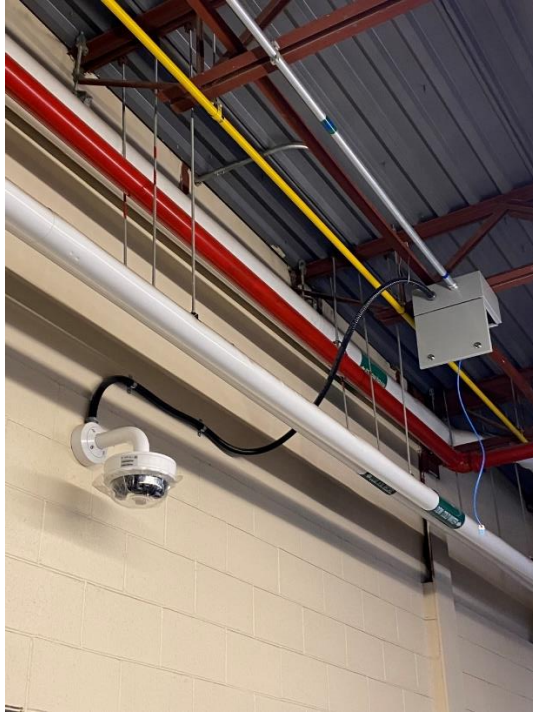
Picture 6: Black Flexible Conduit from Junction Box to Camera
Location: First Floor Exterior Stair Corridor Wall by B140
Drawing Reference: DWG 505 Note 19



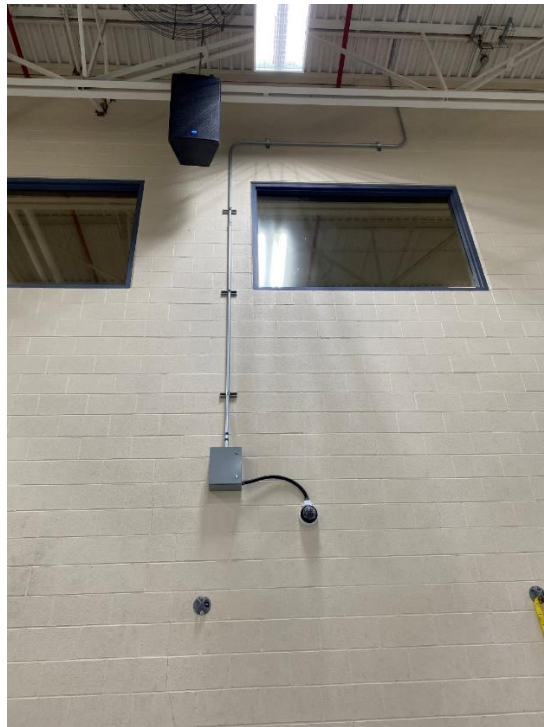
Picture 7: Black Flexible Conduit from Junction Box to Camera
Location: First Floor Interior Stair Corridor Wall by B140
Drawing Reference: DWG 505 Note 19



Picture 8: Black Flexible Conduit from Junction Box to Camera
Location: First Floor Double Doors by C174B
Drawing Reference: DWG 505 Note 19



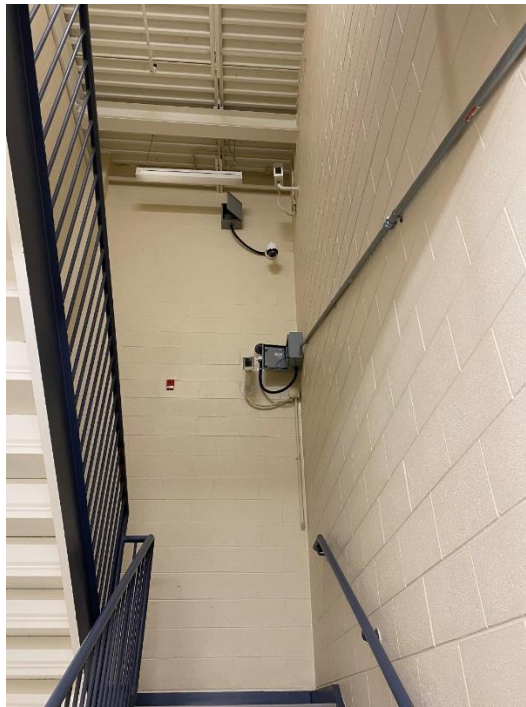
Picture 9: Black Flexible Conduit from Junction Box to Camera
Location: First Floor Loading Dock
Drawing Reference: DWG 505 Note 19



Picture 10: EMT Conduit Installation
Location: First Floor Drill Hall
Drawing Reference: DWG 506 Note 13



Picture 11: Black Flexible Conduit from Junction Box to Camera
Location: First Floor Stair #2
Drawing Reference: DWG 506 Note 14



Picture 12: Black Flexible Conduit from Junction Box to Camera
Location: 2nd Floor Stair #4
Drawing Reference: DWG 507 Note 13



Picture 13: Flex Conduit Not Connected to Camera
Location: 2nd Floor Stair #3
Drawing Reference: DWG 507 Note 12



Picture 14: Flex Conduit Not Connected to Camera
Location: 2nd Floor Stair #3
Drawing Reference: DWG 507 Note 12



Picture 15: Black Flexible Conduit from Junction Box to Camera
Location: 2nd Floor Stair #2
Drawing Reference: DWG 507 Note 13



Picture 16: Incorrect Junction Box Orientation
Location: 3rd Floor Corridor
Drawing Reference: DWG 508 Note 16