

CROSSEY ENGINEERING LTD.
ELECTRICAL

17504.F01
FOR AS-BUILTS
2019.08.20

FIRE ALARM AND NURSE CALL SYSTEMS REPLACEMENT
CUMMER LODGE LONG TERM CARE HOME
205 CUMMER AVENUE
NORTH YORK, ONTARIO M2M 2E8



Long-Term Care Homes and Services Division

FIRE ALARM LEGEND	
	FIRE ALARM MANUAL PULL STATION TO BE COMPLETE WITH PROTECTIVE PLASTIC COVER WITH LOCAL ALARM AND BATTERY.
	FIRE ALARM SPEAKER - CEILING MOUNTED
	FIRE ALARM SPEAKER - WALL MOUNTED
	FIRE ALARM STROBE LIGHT - WALL MOUNTED
	FIRE ALARM STROBE LIGHT - CEILING MOUNTED
	FIRE ALARM HORN SPEAKER - WALL MOUNTED
	FIRE ALARM HORN SPEAKER - CEILING MOUNTED
	FIRE ALARM HORN SPEAKER/STROBE LIGHT - WALL MOUNTED
	FIRE ALARM HORN SPEAKER/STROBE LIGHT - CEILING MOUNTED
	IONIZATION SMOKE DETECTOR CEILING MOUNTED
	IONIZATION SMOKE DETECTOR WALL MOUNTED
	IONIZATION DETECTOR DUCT MOUNTED
	IONIZATION SMOKE DETECTOR MOUNTED BELOW RAISED FLOOR
	PHOTOELECTRIC BEAM TYPE SMOKE DETECTOR - TRANSMITTER
	PHOTOELECTRIC BEAM TYPE SMOKE DETECTOR - RECEIVER
	PHOTOELECTRIC DETECTOR CEILING MOUNTED
	PHOTOELECTRIC DETECTOR WALL MOUNTED
	190 DEGREE FIXED TEMPERATURE THERMAL DETECTOR CEILING MOUNTED
	190 DEGREE FIXED TEMPERATURE THERMAL DETECTOR WALL MOUNTED
	190 DEGREE OF RISE THERMAL DETECTOR CEILING MOUNTED
	190 RATE OF RISE THERMAL DETECTOR WALL MOUNTED
	135 RATE OF RISE THERMAL DETECTOR CEILING MOUNTED
	135 RATE OF RISE THERMAL DETECTOR WALL MOUNTED
	FIRE ALARM CONNECTION TO SUPERVISED VALVE
	FIRE ALARM CONNECTION TO FLOW SWITCH
	FIRE ALARM CONNECTION TO WET ALARM VALVE
	FIRE ALARM CONNECTION TO DRY ALARM VALVE
	FIRE ALARM CONNECTION TO PRESSURE SWITCH
	FIRE ALARM SYSTEM FAN SHUTDOWN
	DUAL VOLTAGE RELAY FOR FAN SHUT DOWN
	FIRE ALARM SYSTEM FAN START-UP
	FIRE ALARM CONNECTION TO ALARM CHECK VALVE
	FIRE ALARM CONNECTION TO SMOKE DAMPER
	LIMIT SWITCH
	FIRE ALARM CONNECTION TO ITEM AS INDICATED
	ADDRESSABLE INTERFACE MODULE
	CENTRAL ALARM CONTROL FACILITY
	FIRE ALARM CONTROL PANEL
	FIRE ALARM ANNUNCIATOR
	"FIRE DO NOT ENTER" SIGN
	FIRE ALARM HANDSET
	CONNECTION TO ELECTRIC DOOR HOLDER, ELECTRIC DOOR HOLDER SUPPLIED BY OTHERS, INSTALLED AND WIRED TO THE FIRE ALARM SYSTEM BY ELECTRICAL CONTRACTOR
	LINE ISOLATION MODULE
	INDIVIDUAL ADDRESSABLE CONTROL MODULE
	MAGLOCK RESET SWITCH
	AIR PRESSURE ALARM
	FIRE ALARM END OF LINE RESISTOR
	DENOTES ADDRESSABLE FIRE ALARM DATA LOOP ZONE
	DENOTES ADDRESSABLE DATA LOOP NUMBER
	DENOTES BUILDING NAME (OPTIONAL)
	DENOTES BUILDING NUMBER/FLOOR NUMBER

SECURITY LEGEND	
	SECURITY ELECTRIC STRIKE LOCATION
	SECURITY MAGNETIC LOCK
	SECURITY MOTION DETECTOR LOCATION
	SECURITY DOOR RELEASE BUTTON LOCATION
	SECURITY KEY SWITCH LOCATION
	SECURITY DOOR CONTACT LOCATION
	SECURITY CARD READER LOCATION
	SECURITY PROX. READER LOCATION
	SECURITY PANIC BUTTON LOCATION
	SECURITY DOOR CONTACT on LOCAL ALARM HORN
	SECURITY HOLD UP BUTTON LOCATION
	OVERHEAD DOOR ALARM CONTACT LOCATION
TELECOMMUNICATION LEGEND	
	VOICE OUTLET - WALL MOUNTED 1/4" (25mm) C. BACK TO NEAREST COMMUNICATION ROOM/CLOSET OR LOCAL CABLE TRAY
	FAX/MODEM OUTLET - WALL MOUNTED 1/4" (25mm) C. BACK TO NEAREST COMMUNICATION ROOM/CLOSET OR LOCAL CABLE TRAY
	DATA OUTLET - WALL MOUNTED 1/4" (25mm) C. BACK TO NEAREST COMMUNICATION ROOM/CLOSET OR LOCAL CABLE TRAY
	COMBINATION TEL/DATA OUTLET - WALL MOUNTED 1/4" (25mm) C. BACK TO NEAREST COMMUNICATION ROOM/CLOSET OR LOCAL CABLE TRAY
	TYPICAL DESCRIPTION FOR DATA/VOICE OUTLETS
	NONE - DENOTES 1 CABLE
	(QTY) - DENOTES QUANTITY OF DATA/VOICE CABLES

NURSE CALL LEGEND	
	NURSE CALL BEDROOM STATION COMPLETE WITH CALL CORD(S) AND SHEET CLIP(S)
	NURSE CALL SYSTEM BATHROOM/WASHROOM STATION IN BED ROOM AREAS
	NURSE CALL SYSTEM BATHROOM/WASHROOM STATION
	NURSE CALL SHOWER/TUB ROOM STATION WITH GASKET (WATERTIGHT & WATERPROOF)
	NURSE CALL SYSTEM EMERGENCY
	NURSE CALL DUTY STATION
	NURSE CALL SYSTEM STAFF STATION
	NURSE CALL SYSTEM CONSOLE OR MONITOR
	WALL MOUNTED NURSE CALL SYSTEM ANNUNCIATOR
	NURSE CALL SYSTEM PANEL with POWER SUPPLY, BACKUP POWER, etc.
	DEDICATED PHONE LINE TO CENTRAL AMBULANCE DISPATCH
	CARDIAC ARREST STATION
	VERRIDE KEY SWITCH
	CEILING MOUNTED PATIENT TRACKING MONITOR
	WALL MOUNTED PATIENT MONITORING STATION
	WALL MOUNTED PATIENT MONITORING MASTER STATION
	WANDERING PATIENT SENSOR
	WANDERING PATIENT MASTER STATION
	CBPO - CEILING BEACON POSITION DEVICE
	WRPO - WALL BEACON IN ROOM POSITION DEVICE
	CBPW - CEILING BEACON POSITION WANDER
	WPW - WALL BEACON POSITION WANDER
	NURSE CALL DOME LIGHT OR ROOM CONTROLLER CEILING MOUNTED
	NURSE CALL DOME LIGHT OR ROOM CONTROLLER WALL MOUNTED
	NURSE CALL ZONE IDENTIFIER - "S" DENOTES COMPLETE WITH LOCAL SOUNDER
	NURSE CALL SYSTEM ELAPSED TIME CLOCK
	DENOTES PATIENT CARE CLASSIFICATION B - BASIC, I - INTERMEDIATE, C - CRITICAL

MISCELLANEOUS LEGEND	
	DENOTES REFER TO NOTE
	DENOTES RAISE-LOWER SWITCH
	DENOTES KEY OPERATED
	DENOTES ON/OFF SWITCH on PILOT LIGHT
	DENOTES SEPARATE CIRCUIT
	DENOTES SPLIT-WIRED
	DENOTES ISOLATED GROUND
	DENOTES GROUNDED FAULT INTERRUPTER
	DENOTES TWIST-LOCK
	DENOTES WATERTIGHT (CSA ENCLOSURE 4)
	DENOTES WATERPROOF (CSA ENCLOSURE 3)
	DENOTES EXPLOSION PROOF
	DENOTES CHILDPROOF
	DENOTES TAMPER PROOF
	DENOTES HOUSEKEEPING
	DENOTES WIRE GUARD
	DENOTES MOUNTED IN MILLWORK
	DENOTES DEVICE MOUNTED 150mm ABOVE COUNTER TOP
	DENOTES HANDICAP PUSH BUTTON
	DENOTES EMPTY CONDUIT
	DENOTES RELAY BASE
	JUNCTION BOX
	DENOTES MECHANICAL EQUIPMENT
	DENOTES EXISTING ITEM TO REMAIN
	DENOTES EXISTING ITEM TO BE REMOVED
	DENOTES EXISTING ITEM TO BE RELOCATED
	DENOTES EXISTING ITEM IN RELOCATED POSITION
	DENOTES EXISTING DEVICE PROVIDED WITH NEW WIRING
	CONTINUOUS LINE DENOTES NEW ITEM UNLESS OTHERWISE NOTED
	HIDDEN LINE DENOTES EXISTING ITEM UNLESS OTHERWISE NOTED
	INDICATES FIRE ALARM ZONE BOUNDARIES

SPECIAL RECEPTACLES LEGEND	
	15A-125V 2P-3W GROUNDED SINGLE RECEPTACLE [CSA 5-15R]
	15A20A-125V 2P-3W GROUNDED SINGLE RECEPTACLE [CSA 5-20RA]
	15A20A-125V 2P-3W GROUNDED DUPLEX RECEPTACLE [CSA 5-20RA]
	30A-125V 2P-3W GROUNDED SINGLE RECEPTACLE [CSA 5-30R]
	50A-125V 2P-3W GROUNDED SINGLE RECEPTACLE [CSA 5-50R]
	15A-250V 2P-3W GROUNDED SINGLE RECEPTACLE [CSA 5-15R]
	20A-250V 2P-3W GROUNDED SINGLE RECEPTACLE [CSA 6-20R]
	30A-250V 2P-3W GROUNDED SINGLE RECEPTACLE [CSA 5-30R]
	50A-250V 2P-3W GROUNDED SINGLE RECEPTACLE [CSA 5-50R]
	15A-125/250V 3P-4W GROUNDED SINGLE RECEPTACLE [CSA 14-15R]
	20A-125/250V 3P-4W GROUNDED SINGLE RECEPTACLE [CSA 14-20R]
	30A-125/250V 3P-4W GROUNDED SINGLE RECEPTACLE [CSA 14-30R]
	50A-125/250V 3P-4W GROUNDED SINGLE RECEPTACLE [CSA 14-50R]
	15A-250V 3P-4W GROUNDED SINGLE RECEPTACLE [CSA 15-15R]
	20A-250V 3P-4W GROUNDED SINGLE RECEPTACLE [CSA 15-20R]
	30A-250V 3P-4W GROUNDED SINGLE RECEPTACLE [CSA 15-30R]
	15A-125V 2P-3W GROUNDED SINGLE RECEPTACLE, TWIST-LOCK [CSA 15-15R]
	20A-125V 2P-3W GROUNDED SINGLE RECEPTACLE, TWIST-LOCK [CSA 15-20R]

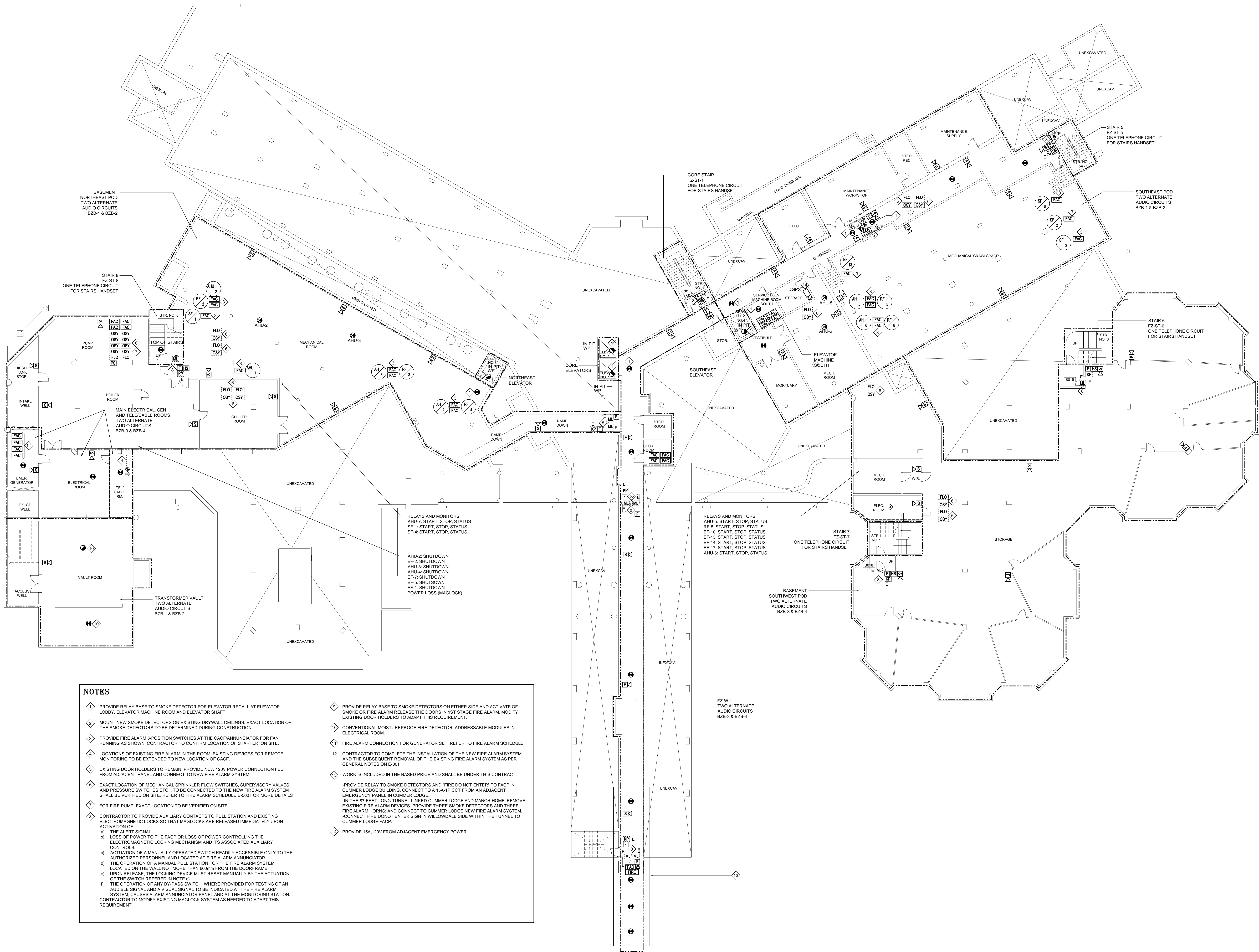
POWER LEGEND	
	15A-125V 2P-3W GROUNDED DUPLEX RECEPTACLE, WALL MOUNTED
	15A-125V 2P-3W ISOLATED GROUND DUPLEX RECEPTACLE, WALL MOUNTED (SS-DENOTES SURGE SUPPRESSION TYPE)
	15A-125V 2P-3W GROUNDED DUPLEX RECEPTACLE, WALL MOUNTED 150mm ABOVE COUNTER TOP
	15A-125V 2P-3W GROUNDED DUPLEX RECEPTACLE, SPLIT WIRED, WALL MOUNTED
	15A-125V 2P-3W GROUNDED DUPLEX RECEPTACLE, SPLIT WIRED, WALL MOUNTED 150mm ABOVE COUNTER TOP
	15A-125V 2P-3W GROUNDED TWO (2) GANGED RECEPTACLES, WALL MOUNTED
	15A-125V 2P-3W ISOLATED GROUND TWO (2) GANGED RECEPTACLES, WALL MOUNTED
	15A-125V 2P-3W GROUNDED DUPLEX RECEPTACLE, WALL MOUNTED - DEDICATED CIRCUIT
	15A-125V 2P-3W GROUNDED DUPLEX RECEPTACLE, MOUNTED ON CHANNEL RACEWAY
	15A-125V 2P-3W ISOLATED GROUND DUPLEX RECEPTACLE, MOUNTED ON CHANNEL RACEWAY
	120V CONNECTION TO EQUIPMENT
	208V, 1PH CONNECTION TO EQUIPMENT
	208V, 3PH CONNECTION TO EQUIPMENT
	240V, 1PH CONNECTION TO EQUIPMENT
	240V, 3PH CONNECTION TO EQUIPMENT
	347V, 1PH CONNECTION TO EQUIPMENT
	480V, 1PH CONNECTION TO EQUIPMENT
	480V, 3PH CONNECTION TO EQUIPMENT
	600V, 1PH CONNECTION TO EQUIPMENT
	600V, 3PH CONNECTION TO EQUIPMENT
	DISCONNECT SWITCH
	COMBINATION MAGNETIC MOTOR STARTER
	MANUAL MOTOR STARTER
	MAGNETIC MOTOR STARTER
	VARIABLE SPEED CONTROLLER, SUPPLIED BY MECHANICAL CONTRACTOR, INSTALLED AND WIRED BY ELECTRICAL CONTRACTOR
	VARIABLE FREQUENCY DRIVE
	THERMOSTAT, SUPPLIED BY MECHANICAL CONTRACTOR, INSTALLED AND WIRED BY ELECTRICAL CONTRACTOR
	SERVICE POLE
	CONTACTOR
	TIME SWITCH
	HAND DRYER, SUPPLIED BY OTHERS, INSTALLED AND WIRED BY ELECTRICAL CONTRACTOR
	PUSHBUTTON STATION, SUPPLIED BY OTHERS, SINGLE GANG BACKBOX AND FINAL TERMINATION BY ELECTRICAL CONTRACTOR (HSC DENOTES HANDICAPPED DOOR PUSHPLATE)
	EMERGENCY POWER OFF BUTTON, (M- DENOTES MASTER STATION)
	OVERHEAD DOOR CONTROLLER (BY OTHERS)
	DOOR OPERATOR SUPPLIED BY OTHERS, 120V POWER CONNECTION PROVIDED BY ELECTRICAL CONTRACTOR
	ELECTRIC HEATER, SUPPLIED BY MECHANICAL CONTRACTOR, INSTALLED AND WIRED BY ELECTRICAL CONTRACTOR
	DENOTES BASEBOARD HEATER No. 1 - REFER TO MECHANICAL SCHEDULES
	TRANSFORMER (TX), FLOOR MOUNTED, COMPLETE WITH 4" (100mm) HIGH HOUSEKEEPING PAD
	FLOOR MOUNTED ELECTRICAL EQUIPMENT COMPLETE WITH 4" (100mm) HIGH HOUSEKEEPING PAD
	PANELBOARD, RECESSED/SURFACE MOUNTED, REFER TO PANEL SCHEDULES.
	TYPICAL DESIGNATIONS FOR POWER PANEL ARE AS FOLLOWS: FLOOR (B=BASEMENT, 1=GROUND FLOOR, 2=SECOND FLOOR, S=SITE) DESIGNATION (A=2= NORMAL POWER, E,F,X,Y=EMERGENCY POWER) VOLTAGE (2=120/208V, 4=277/480V, 6=347/480V)
	DENOTES MAIN SWITCHBOARD
	DENOTES DISTRIBUTION PANEL
	DENOTES MOTOR CONTROL CENTRE
	DENOTES LIGHTING PANEL
	DENOTES POWER/RECEPTACLE PANEL
	DENOTES RELAY PANEL
	TYPICAL MATCHLINE ORIENTATION
	THE ARROW POINTS TO THE DIRECTION OF EACH BLOCK AND ITS RESPECTIVE DRAWING NUMBER. INFORMATION SHOWN ON THE MATCHLINE SIDE THAT FLAGS OTHER DRAWING, IS FOR INFORMATION ONLY, AND TO PROVIDE SOME SENSE OF CONTINUITY TO THE CURRENT DRAWING. THIS INFORMATION SHALL BE ACCOUNTABLE ONLY ON THE DRAWING INDICATED.
	MATCHLINE IS A COMMON BOUNDARY LINE THAT DIVIDES EACH FLOOR INTO ITS DESIGNATED BLOCKS

DRAWING LIST		
DWGS No.	DRAWING TITLE	SCALE
E001	ELECTRICAL LEGENDS, DRAWING LIST AND GENERAL NOTES	N.T.S.
E300	BASEMENT FIRE ALARM SYSTEM NEW LAYOUT	1:150
E301A	GROUND FLOOR FIRE ALARM SYSTEM NEW LAYOUT - NORTHBOUND	1:100
E301B	GROUND FLOOR FIRE ALARM SYSTEM NEW LAYOUT - SOUTHBOUND	1:100
E302A	TYPICAL FLOOR (2ND, 3RD & 4TH FLOORS) FIRE ALARM SYSTEM NEW LAYOUT - NORTHBOUND	1:100
E302B	TYPICAL FLOOR (2ND, 3RD & 4TH FLOORS) FIRE ALARM SYSTEM NEW LAYOUT - SOUTHBOUND	1:100
E303	ROOF PLAN FIRE ALARM SYSTEM NEW LAYOUT	1:150
E401A	GROUND FLOOR NURSE CALL SYSTEM NEW LAYOUT - NORTHBOUND	1:100
E401B	GROUND FLOOR NURSE CALL SYSTEM NEW LAYOUT - SOUTHBOUND	1:100
E402A	TYPICAL FLOOR (2ND, 3RD & 4TH FLOORS) NURSE CALL SYSTEM NEW LAYOUT - NORTHBOUND	1:100
E402B	TYPICAL FLOOR (2ND, 3RD & 4TH FLOORS) NURSE CALL SYSTEM NEW LAYOUT - SOUTHBOUND	1:100
E500	FIRE ALARM SCHEDULE	N.T.S.
E600	FIRE ALARM SYSTEM RISER DIAGRAM	N.T.S.
E601	NURSE CALL SYSTEM RISER DIAGRAMS	N.T.S.
E602	SCHEMATIC SPRINKLER RISER DIAGRAM - EXISTING	N.T.S.
E700	ELECTRICAL DETAILS	N.T.S.

GENERAL NOTES	
1.	THIS DRAWING IS A MASTER LEGEND DRAWING. SOME SYMBOLS MAY NOT APPEAR WITHIN THE DOCUMENTS NOR BE APPLICABLE TO THIS PROJECT. IT IS THE RESPONSIBILITY OF THE ELECTRICAL CONTRACTOR TO OBTAIN A FULL UNDERSTANDING OF THIS LEGEND.
2.	THE PROJECT SCOPE IS TO INSTALL A COMPLETE NEW ADDRESSABLE FIRE ALARM SYSTEM AND NURSE CALL, STAFF ALERT & WANDERING ALERT SYSTEM, TEST AND COMMISSIONING OF THE NEW FIRE ALARM AND NURSE CALL SYSTEMS SHALL BE COMPLETED PRIOR TO ACTIVATING THE NEW FIRE ALARM AND NURSE CALL SYSTEM AND TO REMOVE A COMPLETE EXISTING FIRE ALARM & NURSE CALL SYSTEMS AFTERWARD.
3.	EXISTING FIRE ALARM AND NURSE CALL SYSTEMS MUST REMAIN IN OPERATION UNTIL THE NEW FIRE ALARM AND NURSE CALL SYSTEMS TO BE INSTALLED AND VERIFIED.
4.	ELECTRICAL DRAWINGS SHALL BE READ IN CONJUNCTION WITH THE EXISTING ARCHITECTURAL, STRUCTURAL, CIVIL AND MECHANICAL DOCUMENTS AT ALL TIMES. IT SHALL BE THE ELECTRICAL'S RESPONSIBILITY TO OBTAIN ALL DOCUMENTS PRIOR TO BID SUBMISSION AND CONSTRUCTION.
5.	ELECTRICAL CONTRACTOR ALLOW IN BID PRICE FOR ALL NECESSARY WORK TO PROVIDE AND INSTALL MATCHING BRISKS AFTER THE REMOVAL OF THE EXISTING FIRE ALARM SYSTEM, NURSE CALL SYSTEM AND ASSOCIATED DEVICES AND ALSO AFTER RELOCATING ALL DEVICE NEED TO BE RELOCATED. ELECTRICAL CONTRACTOR TO ALLOW IN BID PRICE FOR ALL NECESSARY PATCHING, REPAIRING AND PAINTING OF EXISTING CEILINGS AND WALLS AS REQUIRED FOR THE ELECTRICAL DEMOLITION/INSTALLATIONS.
6.	THE EXISTING FIRE ALARM LAYOUTS ARE BASED ON SITE REVIEW. CONTRACTOR SHALL REFER TO THE ANNUAL TEST AND INSPECTION REPORTS FOR EXACT QUANTITIES AND LOCATIONS OF ALL FIRE ALARM DEVICES. BEFORE SUBMITTING ANY PRICE, THE CONTRACTOR SHALL VISIT THE SITE AS IDENTIFIED IN DIVISION 1 DOCUMENTS AND EXAMINE THE FOLLOWING: 6.1. CHECK THE EXISTING CONDITIONS AND IDENTIFY ANY LIMITATIONS. 6.2. EXAMINE THE PROPOSED WORK AGAINST THE EXISTING CONDITIONS. AFTER EXAMINING ALL THE ABOVE AGAINST THE PLANS, SPECIFICATIONS AND TERMS OF CONTRACT, THE CONTRACTOR MUST SATISFY HIMSELF THAT THE PROPOSED WORK CAN BE CARRIED OUT, OR SHALL BE MODIFIED AT NO EXTRA COST TO THE OWNER IN ORDER TO ACHIEVE THE INTENT OF THE SCOPE OF WORK IDENTIFIED IN THESE DOCUMENTS. 6.3. IF THE CONTRACTOR BELIEVES LIMITATIONS AND/OR DISCREPANCIES EXIST HE MUST THEN SUBMIT IN WRITING TO THE PRIME CONSULTANT IDENTIFYING THEM. CLARIFICATION WILL BE ISSUED.
7.	DETAILS ON ELECTRICAL DRAWINGS ARE INTENDED TO BE FOR GENERAL ARRANGEMENT ONLY. DETAILS DO NOT SHOW ALL COMPONENTS, BUT ARE MERELY A GUIDE AS TO THE ORIENTATION OF EQUIPMENT THAT IS REQUIRED TO ASSIST THE INSTALLATION.
8.	ALL FIRE ALARM AND NURSE CALL DEVICES SHOWN ON THE DRAWINGS ARE NEW UNLESS OTHERWISE NOTED.
9.	PROVIDE AND INSTALL NEW FIRE ALARM AND NURSE CALL DEVICES AS INDICATED PER SPECIFICATIONS.
10.	CONTRACTOR IS RESPONSIBLE TO EXAMINE AIR HANDLING UNITS AND PROVIDE SUFFICIENT NUMBER OF DUCT SMOKE DETECTORS FOR PROPER DETECTION AS PER MANUFACTURER'S INSTRUCTIONS. CONTRACTOR TO VERIFY EXACT LOCATION ON SITE.
11.	ALL JUNCTION BOXES ARE TO BE IDENTIFIED IN THE SPECIFICATIONS. ELECTRICAL CONTRACTOR SHALL ENSURE ACCESS TO ALL JUNCTION BOXES ARE NOT IMPEDED.
12.	PROVIDE AND INSTALL LCD & LED NETWORK ANNUNCIATOR, ADDRESSABLE FIRE ALARM CONTROL PANEL AND PASSIVE GRAPHIC.
13.	THE CONTRACTOR SHALL PROVIDE A DB TEST REPORT TO CITY OF TORONTO CONSIDERATION AFTER THE SYSTEMS ARE INSTALLED AND TWO WEEKS PRIOR TO THE FIRE INSPECTION.
14.	PROVIDE AND INSTALL NEW FIRE ALARM MANUAL PULL STATION AT HEIGHT OF 1200mm AFF. EXACT LOCATION AND MOUNTING REQUIREMENTS OF MANUAL STATION TO BE VERIFIED WITH LONG TERM CARE MANAGEMENT PRIOR TO INSTALLATION.
15.	ELECTRICAL CONTRACTOR SHALL TAKE NOTE OF THE DRAWING SCHEDULES AND GOVERN HIMSELF ACCORDINGLY.
16.	AFTER COMPLETE INSTALLATION, TEST AND COMMISSION OF THE NEW FIRE ALARM AND NURSE CALL SYSTEMS PRIOR TO GOING LIVE.
16.1	REMOVE ALL EXISTING FIRE ALARM AND NURSE CALL DEVICES INCLUDING END OF LINES, EXPOSED CONDUIT AND JUNCTION BOXES ON EACH FLOOR AND MAKE GOOD FINISH.
16.2	OLD WIRING TO BE PULLED BACK TO CEILINGS OR CONDUITS WHICH ARE TO BE LABELED CLEARLY AS DECOMMISSIONED AND LEFT IN CEILING SPACE TO MINIMIZE AMOUNT OF INTERRUPTION TO OPERATIONS.
17.	ALL AUDIBLE AND STROBE CIRCUITS SHALL BE ALTERNATELY WIRED.
18.	PROVIDE STAINLESS STEEL COVER PLATES FOR ALL REMOVED DEVICES.
19.	ANY SURFACES OR DAMAGED FINISHES AS A RESULT OF ELECTRICAL ALTERATIONS OR INSTALLATIONS SHALL BE REPAIRED.
20.	BE RESPONSIBLE FOR CARE OF THE BUILDING, CLEAN UP ALL DEBRIS, MARKS ON THE WALLS, DOORS, ETC. ON A DAILY BASIS, AND REMOVE FROM THE SITE ON OR BEFORE COMPLETION OF CONTRACT. CONTRACTOR TO ENSURE THAT CORRIDORS ARE KEPT FREE OF DEBRIS AS CONSTRUCTION MATERIAL COOPERATIVE WITH ALL TRADES.
21.	COORDINATE WITH CITY OF TORONTO FOR ALL FIRE WATCH REQUIREMENTS DURING TRANSITION TIME.
22.	REFER TO ABATEMENT REPORT FOR ANY AFFECTED WORK, COVER ALL COST IN THE CONTRACT.
23.	SECURE FLEX WIRING ABOVE CEILING AND SHORTER THAN 10 FEET IS ACCEPTABLE.
24.	PAINTED CONDUITS AND BOXES ARE ACCEPTABLE. HOWEVER, WHERE THERE ARE ACCESSIBLE CEILINGS, CONDUITS AND BOXES MUST BE INSTALLED ABOVE CEILINGS.
25.	THE INSTALLATION ALL WORK INVOLVED IN THIS PROJECT TO ADHERE TO THE MANAGEMENT SCHEDULING, WHERE NIGHT, WEEK-END OR OTHER NON STANDARD WORKING HOURS ARE NECESSARY, ELECTRICAL CONTRACTOR SHALL INCLUDE FOR THESE EVENTUALITIES IN BASE BID.
26.	RISERS OR DETAILS ARE INTENDED TO BE FOR GENERAL ARRANGEMENT ONLY. THEY DO NOT SHOW ALL NECESSARY COMPONENTS, BUT MERELY A GUIDE AS TO THE ORIENTATION OF THE EQUIPMENT WHICH IS REQUIRED.
27.	CONTRACTOR TO PROVIDE: - WANDER GUARD WRIST TAGS: UNIT PRICE APPROXIMATE \$300/UNIT - STAFF ASSIST PENDANTS: UNIT PRICE - PRAGERS: 120 UNITS - UNIT PRICE
28.	CONTRACTOR TO INCLUDE COSTS TO EMPLOY THE SERVICES OF CONTRACTOR/SUPPLIERS TO DO THE INTERFACE AND CONNECTIONS AS FOLLOWS: 28.1 FOR COORDINATION WITH TORONTO HYDRO TO ACCESS TRANSFORMER VAULT FOR DEMOLITION, INSTALLATION AND VERIFICATION OF THE SYSTEM. 28.2 FOR ANY MODIFICATIONS TO AHU CONTROL TO CONNECT THE FIRE ALARM SHUTDOWN AND INTERFACE WITH DUCT SMOKE DETECTORS AND SERVICES WITH MECHANICAL CONTRACTOR "SERVICE/REPAIR". 28.3 FOR ANY MODIFICATIONS TO THE FIREPUMP CONTROLLER TO ACCOMMODATE THE FIREALARM CONNECTIONS AS REQUIRED AND SERVICES OF SPRINKLER CONTRACTOR. 28.4 FOR SERVICE OF ELEVATOR CONTRACTOR "NONE". 28.5 FOR ANY UNFORSEEN SITE CONDITIONS. 28.6 FOR SERVICE OF EXISTING FIRE ALARM SYSTEM "EFP".

PROPOSED SEQUENCE OF INSTALLATION	
FIRE ALARM SYSTEM: As for fire alarm system, the existing system to be kept until the new system is operational so the contractor will have to come back to remove devices and provide blank cover plates as required. The sequence of installation can be established/modified and confirmed by the contractor as follows: Install fire rated closets, Installation of devices and wiring will be per floor or vertical per unit, whichever is more convenience to the Home, Install main loops in the corridor and devices per unit and then extending to common spaces and other units on the same floor or vertical, Connect all other systems with sub-trades - elevators, sprinklers, hydro vault, HVAC for duct smoke, maglock, etc., Testing and verification, Call fire building and fire department inspection, Transfer the remote monitoring and disconnect old system, Demolition of the existing system and devices. NURSE CALL SYSTEM: The same principle for the nurse call, but this system can be activated unit by unit. The sequence of installation can be established/modified and confirmed by the contractor as follows: Install head end equipment and its network. The following will be typical for a floor, Installation of devices and wiring will be per unit including all associated support spaces in the same unit, Training be provided for the 1st unit when it is complete as per specification, Old devices and system will be deactivated and removed, Next unit on the same floor, Final training sections as required;	

SEQUENCE OF OPERATION – NUR

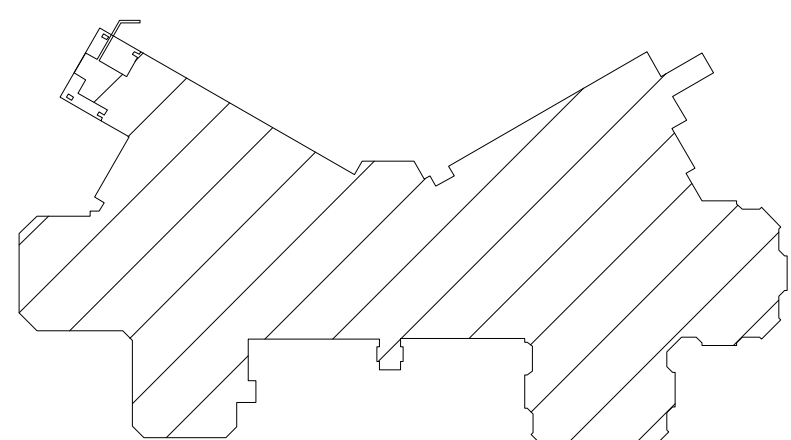
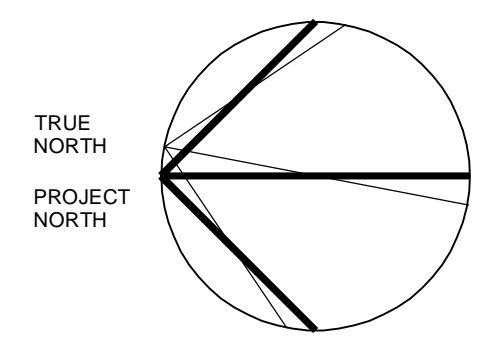


NOTES

1. PROVIDE RELAY BASE TO SMOKE DETECTOR FOR ELEVATOR RECALL AT ELEVATOR LOBBY, ELEVATOR MACHINE ROOM AND ELEVATOR SHAFT.
2. MOUNT NEW SMOKE DETECTORS ON EXISTING DRYWALL CEILINGS. EXACT LOCATION OF THE SMOKE DETECTORS TO BE DETERMINED DURING CONSTRUCTION.
3. PROVIDE FIRE ALARM 3-POSITION SWITCHES AT THE CACFI/ANNUNCIATOR FOR FAN RUNNING AS SHOWN. CONTRACTOR TO CONFIRM LOCATION OF STARTER ON SITE.
4. LOCATIONS OF EXISTING FIRE ALARM IN THE ROOM. EXISTING DEVICES FOR REMOTE MONITORING TO BE EXTENDED TO NEW LOCATION OF CACFI.
5. EXISTING DOOR HOLDERS TO REMAIN. PROVIDE NEW 120V POWER CONNECTION FED FROM ADJACENT PANEL AND CONNECT TO NEW FIRE ALARM SYSTEM.
6. EXACT LOCATION OF MECHANICAL SPRINKLER FLOW SWITCHES, SUPERVISORY VALVES AND PRESSURE SWITCHES ETC., TO BE CONNECTED TO THE NEW FIRE ALARM SYSTEM SHALL BE VERIFIED ON SITE. REFER TO FIRE ALARM SCHEDULE E-500 FOR MORE DETAILS.
7. FOR FIRE PUMP, EXACT LOCATION TO BE VERIFIED ON SITE.
8. CONTRACTOR TO PROVIDE AUXILIARY CONTACTS TO PULL STATION AND EXISTING ELECTROMAGNETIC LOCKS SO THAT MAGLOCKS ARE RELEASED IMMEDIATELY UPON ACTIVATION OF:
 - a) THE ALERT SIGNAL
 - b) LOSS OF POWER TO THE FACP OR LOSS OF POWER CONTROLLING THE ELECTROMAGNETIC LOCKING MECHANISM AND ITS ASSOCIATED AUXILIARY CONTROLS
 - c) ACTUATION OF A MANUALLY OPERATED SWITCH READILY ACCESSIBLE ONLY TO THE AUTHORIZED PERSONNEL AND LOCATED AT FIRE ALARM ANNUNCIATOR
 - d) THE OPERATION OF A MANUAL PULL STATION FOR THE FIRE ALARM SYSTEM LOCATED ON THE WALL NOT MORE THAN 600mm FROM THE DOORFRAME
 - e) UPON RELEASE, THE LOCKING DEVICE MUST RESET MANUALLY BY THE ACTUATION OF THE SWITCH REFERRED IN NOTE (c)
 - f) THE OPERATION OF ANY BY-PASS SWITCH, WHERE PROVIDED FOR TESTING OF AN AUDIBLE SIGNAL AND A VISUAL SIGNAL TO BE INDICATED AT THE FIRE ALARM SYSTEM CAUSES ALARM ANNUNCIATOR PANEL AND AT THE MONITORING STATION. CONTRACTOR TO MODIFY EXISTING MAGLOCK SYSTEM AS NEEDED TO ADAPT THIS REQUIREMENT.
9. PROVIDE RELAY BASE TO SMOKE DETECTORS ON EITHER SIDE AND ACTIVATE OF SMOKE OR FIRE ALARM RELEASE THE DOORS IN 1ST STAGE FIRE ALARM. MODIFY EXISTING DOOR HOLDERS TO ADAPT THIS REQUIREMENT.
10. CONVENTIONAL MOISTUREPROOF FIRE DETECTOR, ADDRESSABLE MODULES IN ELECTRICAL ROOM.
11. FIRE ALARM CONNECTION FOR GENERATOR SET, REFER TO FIRE ALARM SCHEDULE.
12. CONTRACTOR TO COMPLETE THE INSTALLATION OF THE NEW FIRE ALARM SYSTEM AND THE SUBSEQUENT REMOVAL OF THE EXISTING FIRE ALARM SYSTEM AS PER GENERAL NOTES ON E-001
13. WORK IS INCLUDED IN THE BASED PRICE AND SHALL BE UNDER THIS CONTRACT.
 - PROVIDE RELAY TO SMOKE DETECTORS AND "FIRE DO NOT ENTER" TO FACP IN CUMMER LODGE BUILDING. CONNECT TO A 15A-1P PCT FROM AN ADJACENT EMERGENCY PANEL IN CUMMER LODGE.
 - IN THE 87 FEET LONG TUNNEL LINKED CUMMER LODGE AND MANOR HOME, REMOVE EXISTING FIRE ALARM DEVICES. PROVIDE THREE SMOKE DETECTORS AND THREE FIRE ALARM HORNS, AND CONNECT TO CUMMER LODGE NEW FIRE ALARM SYSTEM.
 - CONNECT FIRE DONOT ENTER SIGN IN WILLOWDALE SIDE WITHIN THE TUNNEL TO CUMMER LODGE FACP.
14. PROVIDE 15A/120V FROM ADJACENT EMERGENCY POWER.

NOTES:
CONTRACTOR MUST CHECK & VERIFY ALL DIMENSIONS ON THE JOB.
DO NOT SCALE DRAWINGS.
ALL DRAWINGS, SPECIFICATIONS AND RELATED DOCUMENTS ARE THE COPYRIGHT PROPERTY OF THE ENGINEER AND MUST BE RETURNED UPON REQUEST. REPRODUCTION OF DRAWINGS, SPECIFICATIONS AND RELATED DOCUMENTS IN PART OR IN WHOLE IS FORBIDDEN WITHOUT THE WRITTEN PERMISSION OF THE ENGINEER.
THIS DRAWING IS NOT TO BE USED FOR CONSTRUCTION UNTIL SIGNED BY THE ENGINEER.

CROSSEY
ENGINEERING
LTD.
2255 Sheppard Avenue. E.
Suite E 331
North York, On M2J 4Y1
(416)497.3111 fax (416)497.7210



KEYPLAN

CEL #17504.E02

Seal

No.	Revision Description	Date
6.	ISSUED FOR CONSTRUCTION	2018-10-15
5.	ISSUED FOR ADD E01	2018-05-10
4.	ISSUED FOR BUILDING PERMIT	2018-06-07
3.	ISSUED FOR TENDER	2018-04-09
2.	ISSUED FOR COSTING	2018-03-07
1.	ISSUED FOR 75% REVIEW	2018-01-26

CUMMER LODGE
Home for the Aged

FIRE ALARM AND
NURSE CALL SYSTEM
REPLACEMENT

205 CUMMER AVENUE
WILLOWDALE, ON M2M 2E8

Project

BASEMENT LEVEL
FIRE ALARM SYSTEM LAYOUT

Title
LN
Drawn by
NN/LN
Checked by
17504.F01
Project No.

NOVEMBER 2017
date
1:150
Scale

E-300

Drawing no.

LAST EDIT: 04/JUN/18 11:34:23

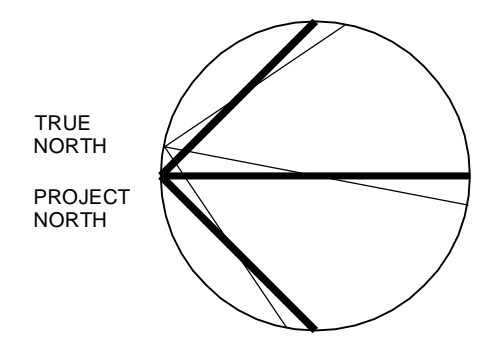
CEL_CAD FILE: Drawings\2017\17504-E02_Cummer Lodge FABRIC.syd Working\E300.dwg [User]

NOTES:
CONTRACTOR MUST CHECK & VERIFY ALL DIMENSIONS ON THE JOB.
DO NOT SCALE DRAWINGS.
ALL DRAWINGS, SPECIFICATIONS AND RELATED DOCUMENTS ARE THE COPYRIGHT PROPERTY OF THE ENGINEER AND MUST BE RETURNED UPON REQUEST. REPRODUCTION OF DRAWINGS, SPECIFICATIONS AND RELATED DOCUMENTS IN PART OR IN WHOLE IS FORBIDDEN WITHOUT THE WRITTEN PERMISSION OF THE ENGINEER.
THIS DRAWING IS NOT TO BE USED FOR CONSTRUCTION UNTIL SIGNED BY THE ENGINEER.

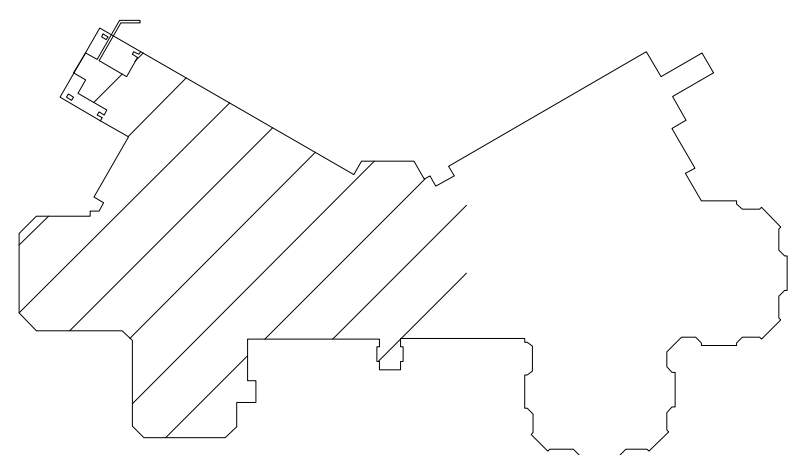
CROSSEY
ENGINEERING
LTD.



2255 Sheppard Avenue. E.
Suite E 331
North York, On M2J 4Y1
(416)497.3111 fax (416)497.7210



NORTH



KEYPLAN

CEL #17504.E02

Seal

No.	Revision Description	Date
6.	ISSUED FOR CONSTRUCTION	2018-10-15
5.	ISSUED FOR ADD E01	2018-05-10
4.	ISSUED FOR BUILDING PERMIT	2018-05-07
3.	ISSUED FOR TENDER	2018-04-09
2.	ISSUED FOR COSTING	2018-03-07
1.	ISSUED FOR 75% REVIEW	2018-01-26

CUMMER LODGE
Home for the Aged

FIRE ALARM AND
NURSE CALL SYSTEM
REPLACEMENT

205 CUMMER AVENUE
WILLOWDALE, ON M2M 2E8

Project

GROUND FLOOR
FIRE ALARM SYSTEM LAYOUT
NORTHBOUND

Title

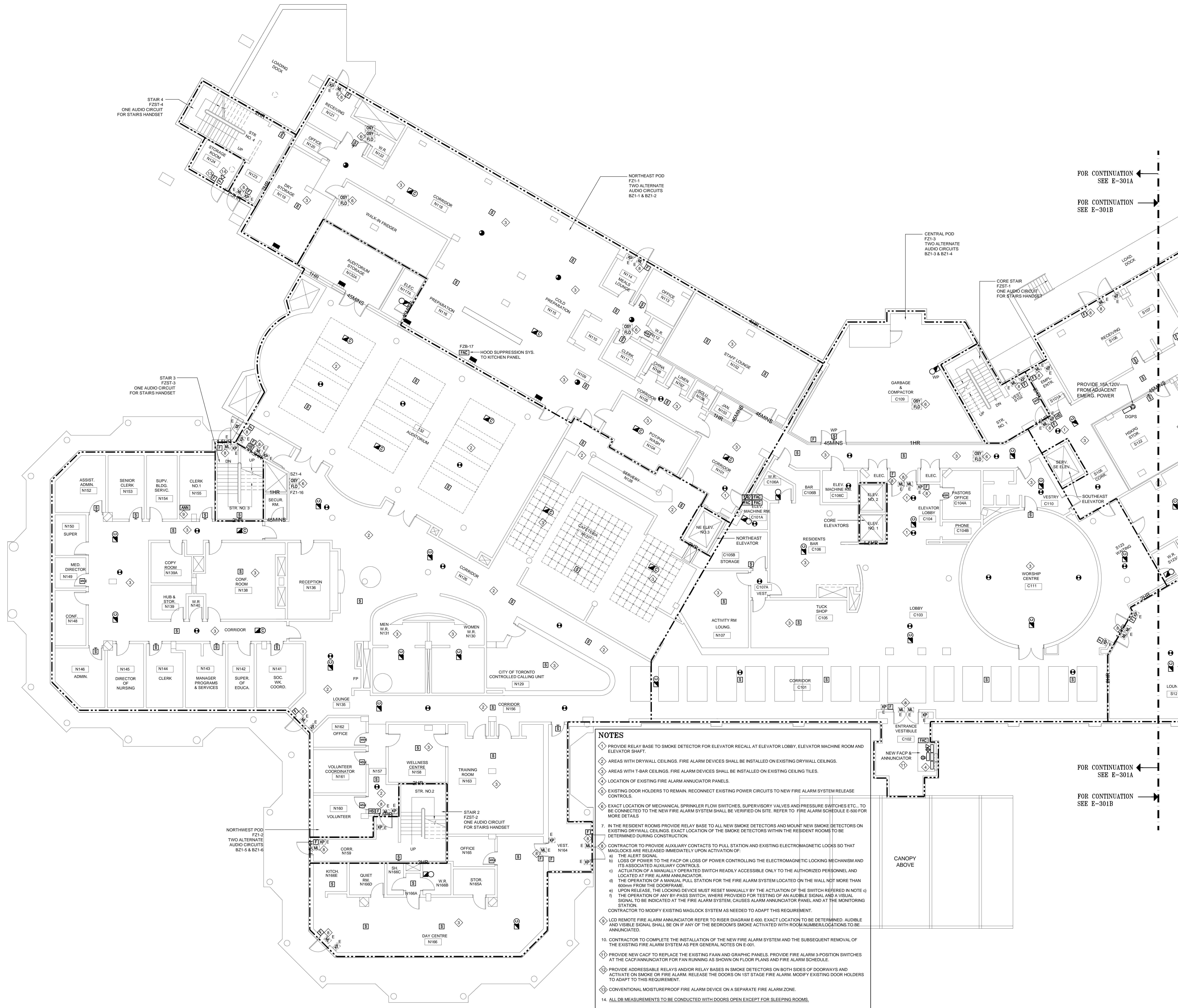
LN
Drawn by
NN/LN
Checked by
17504.F01
Project No.

NOVEMBER 2017
date
1:100
Scale

Drawing no.

E-301A

LAST EDIT: 04/JUN/18 11:53:15



NOTES

1. PROVIDE RELAY BASE TO SMOKE DETECTOR FOR ELEVATOR RECALL AT ELEVATOR LOBBY, ELEVATOR MACHINE ROOM AND ELEVATOR SHAFT.
2. AREAS WITH DRYWALL CEILINGS. FIRE ALARM DEVICES SHALL BE INSTALLED ON EXISTING DRYWALL CEILINGS.
3. AREAS WITH T-BAR CEILINGS. FIRE ALARM DEVICES SHALL BE INSTALLED ON EXISTING CEILING TILES.
4. LOCATION OF EXISTING FIRE ALARM ANNUNCIATOR PANELS.
5. EXISTING DOOR HOLDERS TO REMAIN. RECONNECT EXISTING POWER CIRCUITS TO NEW FIRE ALARM SYSTEM RELEASE CONTROLS.
6. EXACT LOCATION OF MECHANICAL SPRINKLER FLOW SWITCHES, SUPERVISORY VALVES AND PRESSURE SWITCHES ETC., TO BE CONNECTED TO THE NEW FIRE ALARM SYSTEM SHALL BE VERIFIED ON SITE. REFER TO FIRE ALARM SCHEDULE E-500 FOR MORE DETAILS.
7. IN THE RESIDENT ROOMS PROVIDE RELAY BASE TO ALL NEW SMOKE DETECTORS AND MOUNT NEW SMOKE DETECTORS ON EXISTING DRYWALL CEILINGS. EXACT LOCATION OF THE SMOKE DETECTORS WITHIN THE RESIDENT ROOMS TO BE DETERMINED DURING CONSTRUCTION.
8. CONTRACTOR TO PROVIDE AUXILIARY CONTACTS TO PULL STATION AND EXISTING ELECTROMAGNETIC LOCKS SO THAT MAGLOCKS ARE RELEASED IMMEDIATELY UPON ACTIVATION OF:
 - a) THE ALERT SIGNAL.
 - b) LOSS OF POWER TO THE FACP OR LOSS OF POWER CONTROLLING THE ELECTROMAGNETIC LOCKING MECHANISM AND ITS ASSOCIATED AUXILIARY CONTROLS.
 - c) ACTUATION OF A MANUALLY OPERATED SWITCH READILY ACCESSIBLE ONLY TO THE AUTHORIZED PERSONNEL AND LOCATED AT FIRE ALARM ANNUNCIATOR.
 - d) THE OPERATION OF A MANUAL PULL STATION FOR THE FIRE ALARM SYSTEM LOCATED ON THE WALL NOT MORE THAN 600mm FROM THE DOORFRAME.
 - e) UPON RELEASE, THE LOCKING DEVICE MUST RESET MANUALLY BY THE ACTUATION OF THE SWITCH REFERRED IN NOTE 1).
 - f) THE OPERATION OF ANY BY-PASS SWITCH, WHERE PROVIDED FOR TESTING OF AN AUDIBLE SIGNAL AND A VISUAL SIGNAL TO BE INDICATED AT THE FIRE ALARM SYSTEM, CAUSES ALARM ANNUNCIATOR PANEL AND AT THE MONITORING STATION.
9. CONTRACTOR TO MODIFY EXISTING MAGLOCK SYSTEM AS NEEDED TO ADAPT THIS REQUIREMENT.
10. LCD REMOTE FIRE ALARM ANNUNCIATOR REFER TO RISER DIAGRAM E-600. EXACT LOCATION TO BE DETERMINED. AUDIBLE AND VISIBLE SIGNAL SHALL BE ON IF ANY OF THE BEDROOM'S SMOKE ACTIVATED WITH ROOM NUMBER LOCATIONS TO BE ANNUNCIATED.
11. CONTRACTOR TO COMPLETE THE INSTALLATION OF THE NEW FIRE ALARM SYSTEM AND THE SUBSEQUENT REMOVAL OF THE EXISTING FIRE ALARM SYSTEM AS PER GENERAL NOTES ON E-001.
12. PROVIDE NEW FACP TO REPLACE THE EXISTING FACP AND GRAPHIC PANELS. PROVIDE FIRE ALARM 3-POSITION SWITCHES AT THE FACP/ANNUNCIATOR FOR FAN RUNNING AS SHOWN ON FLOOR PLANS AND FIRE ALARM SCHEDULE.
13. PROVIDE ADDRESSABLE RELAYS AND/OR RELAY BASES IN SMOKE DETECTORS ON BOTH SIDES OF DOORWAYS AND ACTIVATE ON SMOKE OR FIRE ALARM. RELEASE THE DOORS ON 1ST STAGE FIRE ALARM. MODIFY EXISTING DOOR HOLDERS TO ADAPT TO THIS REQUIREMENT.
14. CONVENTIONAL MOISTUREPROOF FIRE ALARM DEVICE ON A SEPARATE FIRE ALARM ZONE.
15. ALL DB MEASUREMENTS TO BE CONDUCTED WITH DOORS OPEN EXCEPT FOR SLEEPING ROOMS.

KEYPLAN

Seal

	FOR AS-BUILTS	2019-08-20
6.	ISSUED FOR CONSTRUCTION	2018-10-15
5.	ISSUED FOR ADD E01	2018-05-10
4.	ISSUED FOR BUILDING PERMIT	2018-05-07
3.	ISSUED FOR TENDER	2018-04-09
2.	ISSUED FOR COSTING	2018-03-07
1.	ISSUED FOR 75% REVIEW	2018-01-26
No.	Revision Description	Date

Project

Title

LN	NOVEMBER 2017
Drawn by	date
NN/LN	1:100
Checked by	Scale
17504.F01	
Project No.	

E-301B

Drawing no.

LAST EDIT: 08/MAY/18 16:12:08


NOTES

- ◆ PROVIDE RELAY BASE TO SMOKE DETECTOR FOR ELEVATOR RECALL AT ELEVATOR LOBBY, ELEVATOR MACHINE ROOM AND ELEVATOR SHaft.
- ◆ AREAS WITH DRYWALL CEILINGS, FIRE ALARM DEVICES SHALL BE INSTALLED ON EXISTING DRYWALL CEILINGS.
- ◆ AREAS WITH T-BAR CEILINGS, FIRE ALARM DEVICES SHALL BE INSTALLED ON EXISTING CEILING TILES.
- ◆ LOCATION OF EXISTING FIRE ALARM PANELS.
- ◆ EXISTING GROUND HOLDERS TO REMAIN. RECONNECT EXISTING POWER CIRCUITS TO NEW FIRE ALARM SYSTEM ELECTRICAL CONTROLS.
- ◆ EXACT LOCATION OF MECHANICAL SPRINKLER FLOW SWITCHES, SUPERVISORY VALVES AND PRESSURE SWITCHES ETC., TO BE CONNECTED TO THE NEW FIRE ALARM SYSTEM SHALL BE VERIFIED ON SITE. REFER TO FIRE FIGHT SCHEDULE E-600 FOR MORE DETAILS.
7. IN THE RESIDENT ROOMS PROVIDE RELAY BASE TO ALL NEW SMOKE DETECTORS AND MOUNT NEW SMOKE DETECTORS ON EXISTING DRYWALL CEILINGS. EXACT LOCATION OF THE SMOKE DETECTORS WITHIN THE RESIDENT ROOMS TO BE DETERMINED DURING CONSTRUCTION.
- ◆ CONTRACTOR TO PROVIDE AUXILIARY CONTACTS TO PLAT STATION AND EXISTING ELECTROMAGNETIC LOCKS SO THAT MAGLOCKS ARE RELEASED IMMEDIATELY UPON ACTIVATION OF:
 - a) THE ALERT SIGNAL
 - b) LOSS OF POWER TO THE FACT OR LOSS OF POWER CONTROLLING THE ELECTROMAGNETIC LOCKING
 - c) THE OPERATION OF A MANUALLY OPERATED SMOKE DETECTOR
 - d) ACTIVATION OF A MANUALLY OPERATED SWITCH READILY ACCESSIBLE ONLY TO THE AUTHORIZED PERSONNEL AND LOCATED AT FIRE ALARM ANNUNCIATOR.
- ◆ THE OPERATION OF A MANUALLY OPERATED SWITCH FOR THE FIRE ALARM SYSTEM LOCATED ON THE WALL NOT MORE THAN 600mm FROM THE DOORFRAME.
- ◆ UPON RELEASE, THE LOCKING DEVICE MUST RESET MANUALLY BY THE ACTION OF THE SWITCH REFERRED IN NOTE
- ◆ f) THE OPERATION OF ANY BY-PASS SWITCH, WHERE PROVIDED FOR TESTING OF AN AUDIBLE SIGNAL AND A VISUAL SIGNAL, TO BE INDICATED AT THE FIRE ALARM SYSTEM, CAUSES ALARM ANNUNCIATOR PANEL AND CALL AT THE MONITORING STATION.
- ◆ CONTRACTOR TO MODIFY EXISTING MAGLOCK SYSTEM AS NEEDED TO ADAPT THIS REQUIREMENT.
- ◆ LCD REMOTE FIRE ALARM ANNUNCIATOR. EXACT LOCATION TO BE DETERMINED. AUDIBLE AND VISIBLE SIGNAL SHALL BE ON IF ANY OF THE BEDROOM'S SMOKE ACTUATED WITH ROOM NUMBER/LOCATIONS TO BE ANNUNCIATED
- ◆ LOCATION OF NEW FIRE ALARM DOP IN HSPKG 122. EXACT LOCATION TO BE DETERMINED. REFER TO FA RISER DIAGRAM E-600 FOR DETAILS.
11. CONTRACTOR TO COMPLETE THE INSTALLATION OF THE NEW FIRE ALARM SYSTEM AND THE SUBSEQUENT REMOVAL OF THE EXISTING FIRE ALARM SYSTEM AS PER GENERAL NOTES ON E-001.
- ◆ PROVIDE ADDRESSABLE RELAYS AND/OR RELAY BASES IN SMOKE DETECTORS ON BOTH SIDES OF DOORWAYS AND CORRIDOR SMOKE OR FIRE ALARM. RELIEF THE DOORS ON 1ST STAGE FIRE ALARM. MODIFY EXISTING DOOR HOLDERS TO ADAPT TO THIS REQUIREMENT.
13. ALL DB MEASUREMENTS TO BE CONDUCTED WITH DOORS OPEN EXCEPT FOR SLEEPING ROOMS.

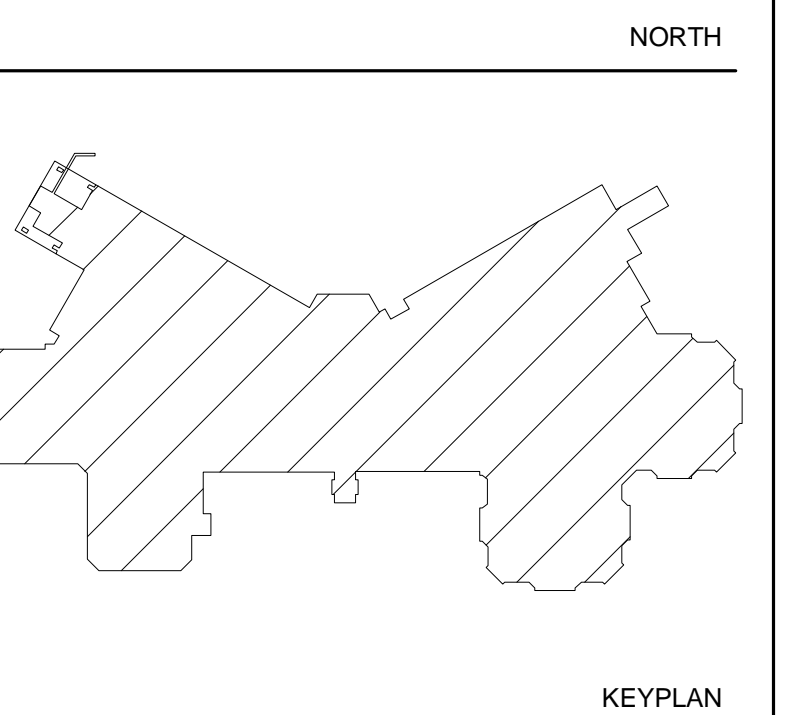
GT EDIT: 08/MAY/18 16:13:43

FOR CONTINUATION -
SEE E-302B

CROSSEY
ENGINEERING
LTD.



2255 Sheppard Avenue. E.
Suite E 331
North York, On M2J 4Y1
(416)497.3111 fax (416)497.7210



CUMMER LODGE
Home for the Aged

FIRE ALARM AND
NURSE CALL SYSTEM
REPLACEMENT

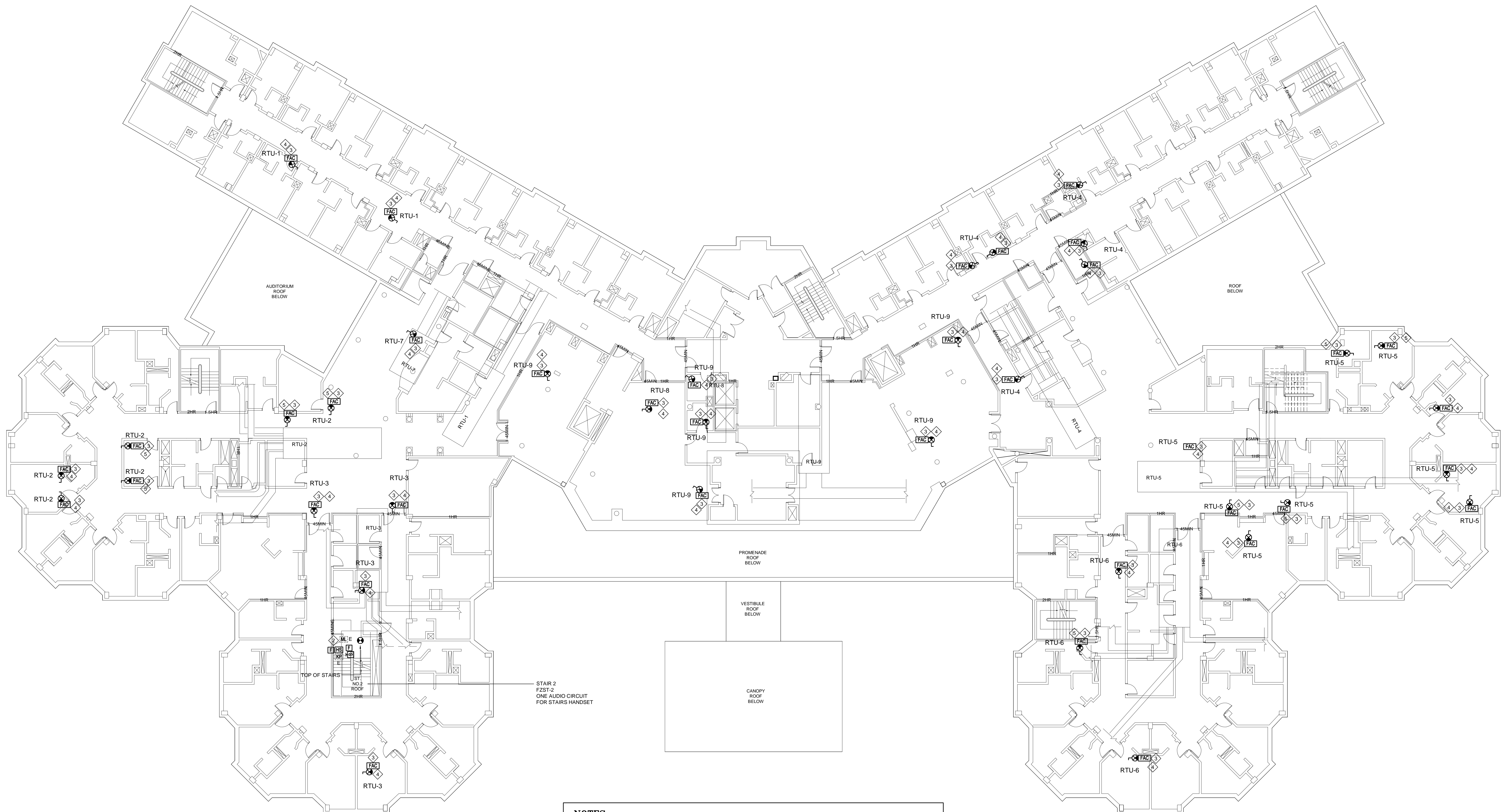
205 CUMMER AVENUE
WILLOWDALE, ON M2M 2E8

FOURTH FLOOR CEILING PLAN
FIRE ALARM SYSTEM LAYOUT

-303

Drawing no. _____

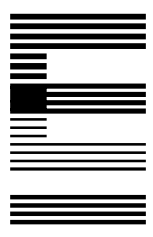
EDIT: 08/MAY/18 16:15:21



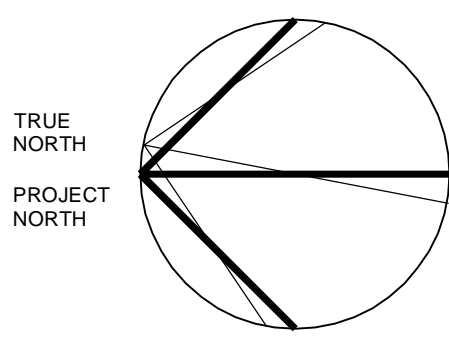
1. LOCATIONS SHOWN ON THE DRAWINGS FOR FIRE ALARM DEVICES AND CONNECTIONS ARE DIAGRAMATIC. CONTRACTOR TO PROVIDE DUCT SMOKE DETECTORS AT SUITABLE LOCATIONS IN THE EXISTING MAIN SUPPLY AIR DUCTS DOWN STREAM. COORDINATE WITH MECHANICAL CONTRACTOR IF REQUIRED.
2. CONTRACTOR TO PROVIDE AUXILIARY CONTACTS TO PULL STATION AND EXISTING ELECTROMAGNETIC LOCKS SO THAT MAGLOCKS ARE RELEASED IMMEDIATELY UPON ACTIVATION OF:
 - a) THE ALERT SIGNAL
 - b) LOSS OF POWER TO THE FACP OR LOSS OF POWER CONTROLLING THE ELECTROMAGNETIC LOCKING MECHANISM AND ITS ASSOCIATED AUXILIARY CONTACTS
 - c) ACTUATION OF A MANUALLY OPERATED SWITCH READILY ACCESSIBLE ONLY TO THE AUTHORIZED PERSONNEL AND LOCATED AT FIRE ALARM ANNUNCIATOR
 - d) THE OPERATION OF A PASS CODE PULL STATION FOR THE FIRE ALARM SYSTEM LOCATED ON THE WALL NOT MORE than 800mm from the DOORFRAME.
 - e) UPON RELEASE, THE LOCKING DEVICE MUST RESET MANUALLY BY THE ACTUATION OF THE SWITCH REFERRED IN NOTE 6
3. THE OPERATION OF A PASS CODE MUST BE PROVIDED FOR TESTING OF AN AUDIBLE SIGNAL AND A VISUAL SIGNAL TO BE INDICATED AT THE FIRE ALARM SYSTEM. CAUSES ALARM ANNUNCIATOR PANEL AND AT THE MONITORING STATION. CONTRACTOR TO MODIFY EXISTING MAGLOCK SYSTEM AS NECESSARY TO ADAPT THIS REQUIREMENT.
4. PROVIDE RELAY BASE TO INTERFACE THE MECHANICAL EQUIPMENT (AUTOMATICALLY SHUTDOWN/FAN RUNNING IN ACTIVATION OF DUCT SMOKE DETECTOR). CONTRACTOR TO CONFIRM LOCATION OF STARTER ON SITE. PROVIDE RELAY WHERE REQUIRED.
5. CONTRACTOR TO PROVIDE DUCT SMOKE DETECTORS IN LEVEL 4 EXISTING T-BAR CEILINGS BELOW. FINAL LOCATIONS TO BE DETERMINED ON SITE. PROVIDE REMOTE INDICATORS ON CEILING.
6. CONTRACTOR TO PROVIDE DUCT SMOKE DETECTORS IN LEVEL 4 EXISTING DRYWALL CEILINGS BELOW. FINAL LOCATIONS TO BE DETERMINED ON SITE. PROVIDE ACCESS HATCHES AND REMOTE INDICATORS ON CEILING.
7. REFER TO FIRE ALARM SCHEDULE FOR FIRE ALARM ZONES.
8. REFER TO CCN-07 EXISTING HAVC LAYOUTS FOR DUCT SMOKE DETECTORS LOCATIONS IN 4TH FLOOR CEILING SPACES.

NOTES:
CONTRACTOR MUST CHECK & VERIFY ALL DIMENSIONS ON THE JOB.
DO NOT SCALE DRAWINGS.
ALL DRAWINGS, SPECIFICATIONS AND RELATED DOCUMENTS ARE THE COPYRIGHT PROPERTY OF THE ENGINEER AND MUST BE RETURNED UPON REQUEST. REPRODUCTION OF DRAWINGS, SPECIFICATIONS AND RELATED DOCUMENTS IN PART OR IN WHOLE IS FORBIDDEN WITHOUT THE WRITTEN PERMISSION OF THE ENGINEER.
THIS DRAWING IS NOT TO BE USED FOR CONSTRUCTION UNTIL SIGNED BY THE ENGINEER.

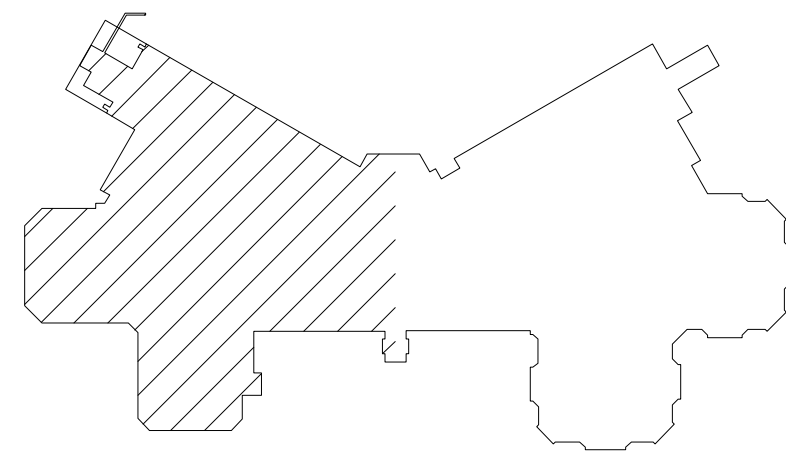
CROSSEY
ENGINEERING
LTD.



2255 Sheppard Avenue. E.
Suite E 331
North York, On M2J 4Y1
(416)497.3111 fax (416)497.7210



NORTH



KEYPLAN

CEL #17504.E02

Seal

No.	Revision Description	Date
6.	ISSUED FOR CONSTRUCTION	2018-10-15
5.	ISSUED FOR ADD E01	2018-06-10
4.	ISSUED FOR BUILDING PERMIT	2018-05-07
3.	ISSUED FOR TENDER	2018-04-09
2.	ISSUED FOR COSTING	2018-03-07
1.	ISSUED FOR 75% REVIEW	2018-01-26

CUMMER LODGE Home for the Aged

FIRE ALARM AND NURSE CALL SYSTEM REPLACEMENT

205 CUMMER AVENUE
WILLOWDALE, ON M2M 2E8

Project

GROUND FLOOR
NURSE CALL SYSTEM LAYOUT
NORTHBOUND

Title
LN
Drawn by
NN/LN
Checked by
17504.F01
Project No.

NOVEMBER 2017
date
1:100
Scale

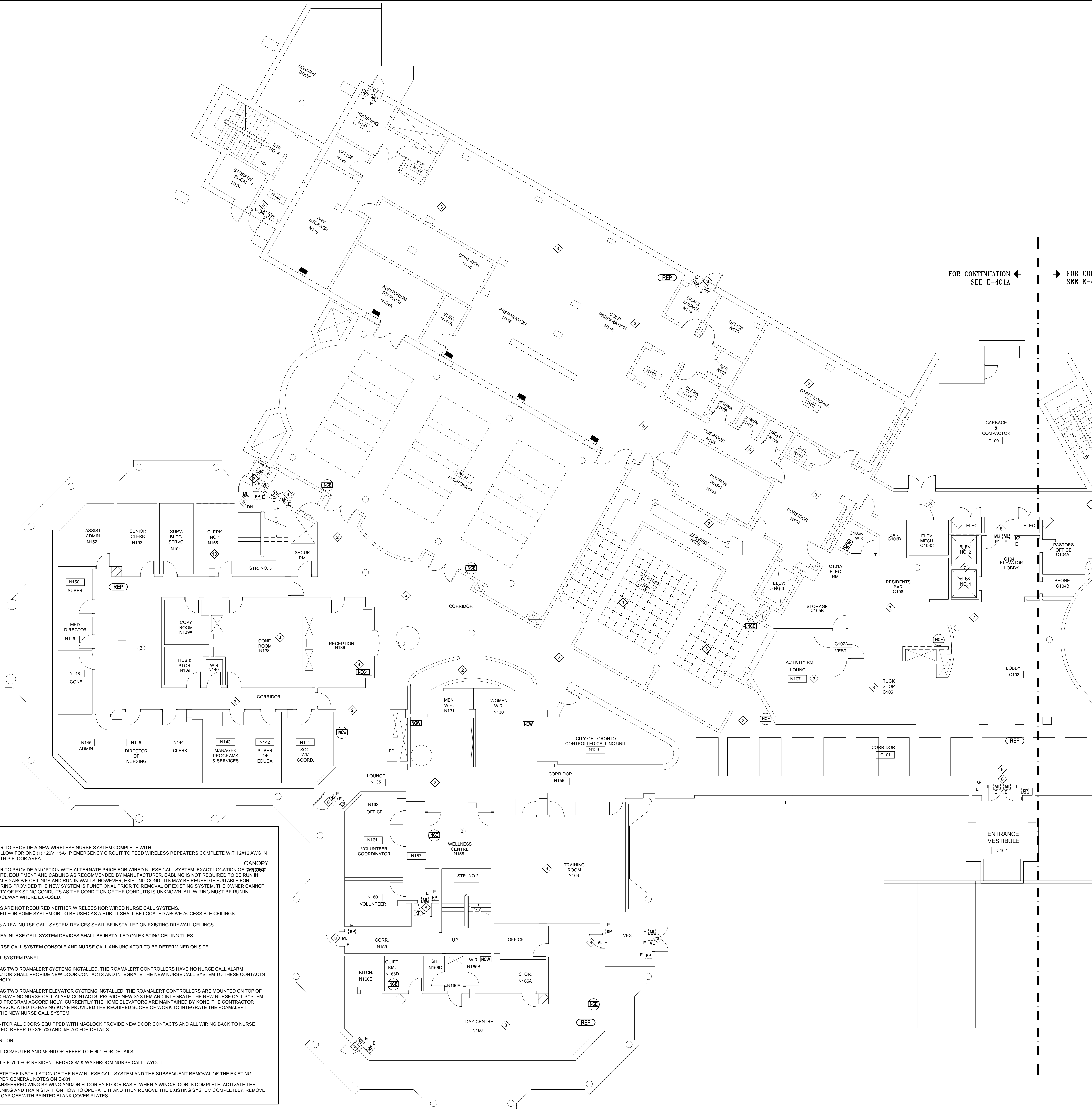
E-401A

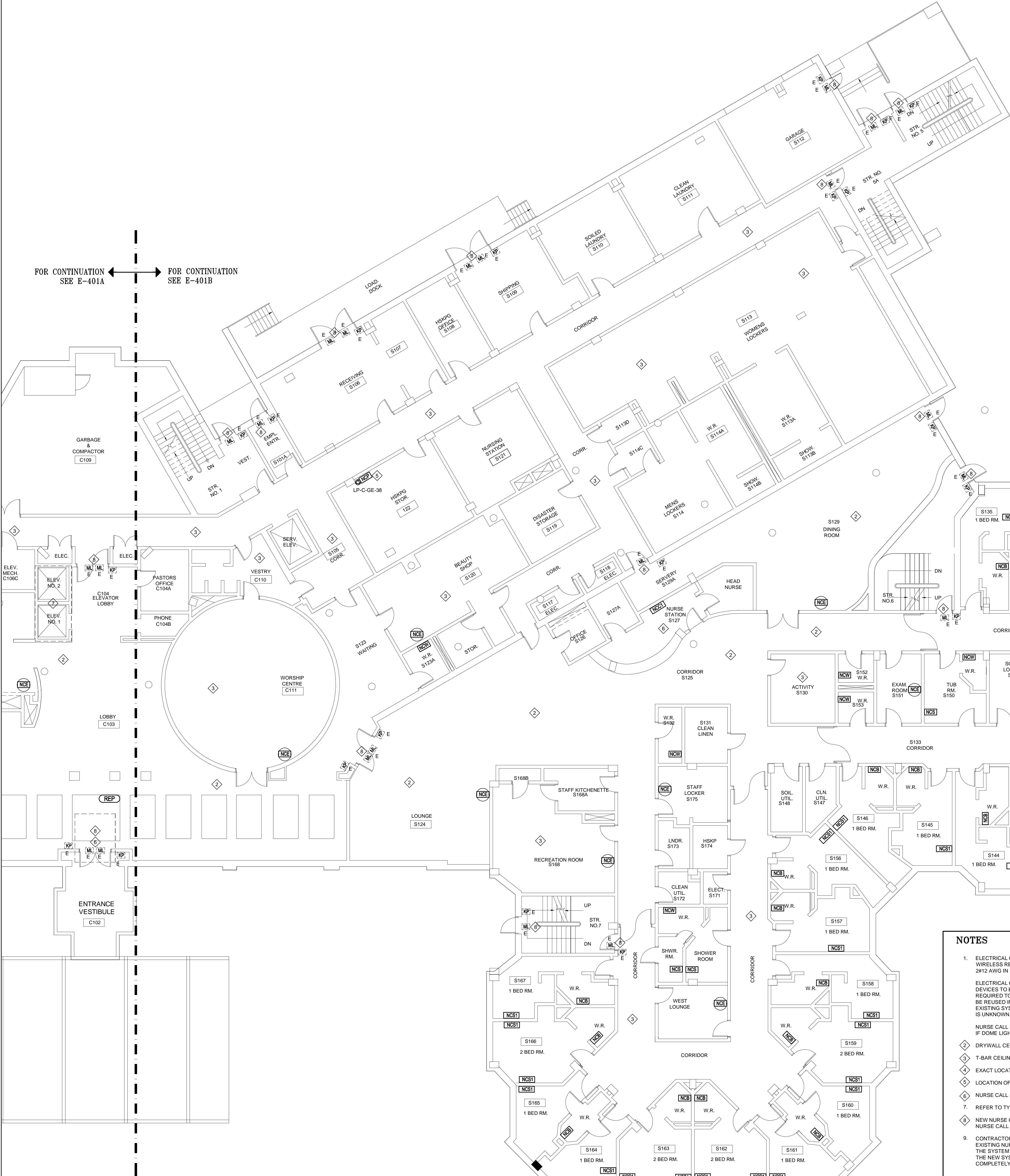
Drawing no.

LAST EDIT: 05/JUN/18 10:56:35

NOTES

- ELECTRICAL CONTRACTOR TO PROVIDE A NEW WIRELESS NURSE SYSTEM COMPLETE WITH:
WIRELESS REPEATERS: ALLOW FOR ONE (1) 120V, 15A-1P EMERGENCY CIRCUIT TO FEED WIRELESS REPEATERS COMPLETE WITH 2#12 AWG IN 19mm EMT CONDUIT FOR THIS FLOOR AREA.
CANOPY
ELECTRICAL CONTRACTOR TO PROVIDE AN OPTION WITH ALTERNATE PRICE FOR WIRED NURSE CALL SYSTEM. EXACT LOCATION OF ABOVE TO BE DETERMINED ON SITE. EQUIPMENT AND CABLING AS RECOMMENDED BY MANUFACTURER. CABLING IS NOT REQUIRED TO BE RUN IN CONDUIT WHERE CONCEALED ABOVE CEILINGS AND RUN IN WALLS, HOWEVER, EXISTING CONDUITS MAY BE REUSED IF SUITABLE FOR INSTALLATION OF NEW WIRING PROVIDED THE NEW SYSTEM IS FUNCTIONAL PRIOR TO REMOVAL OF EXISTING SYSTEM. THE OWNER CANNOT ADVISE ON THE SUITABILITY OF EXISTING CONDUITS AS THE CONDITION OF THE CONDUITS IS UNKNOWN. ALL WIRING MUST BE RUN IN CONDUIT OR SURFACE RACEWAY WHERE EXPOSED.
NURSE CALL DOME LIGHTS ARE NOT REQUIRED NEITHER WIRELESS NOR WIRED NURSE CALL SYSTEMS.
IF DOME LIGHT IS REQUIRED FOR SOME SYSTEM OR TO BE USED AS A HUB, IT SHALL BE LOCATED ABOVE ACCESSIBLE CEILINGS.
- DRYWALL CEILING IN THIS AREA. NURSE CALL SYSTEM DEVICES SHALL BE INSTALLED ON EXISTING DRYWALL CEILINGS.
- T-BAR CEILING IN THIS AREA. NURSE CALL SYSTEM DEVICES SHALL BE INSTALLED ON EXISTING CEILING TILES.
- EXACT LOCATION FOR NURSE CALL SYSTEM CONSOLE AND NURSE CALL ANNUNCIATOR TO BE DETERMINED ON SITE.
- LOCATION OF NURSE CALL SYSTEM PANEL.
- THE HOME CURRENTLY HAS TWO ROAMALERT SYSTEMS INSTALLED. THE ROAMALERT CONTROLLERS HAVE NO NURSE CALL ALARM CONTACTS. THE CONTRACTOR SHALL PROVIDE NEW DOOR CONTACTS AND INTEGRATE THE NEW NURSE CALL SYSTEM TO THESE CONTACTS AND PROGRAM ACCORDINGLY.
- THE HOME CURRENTLY HAS TWO ROAMALERT ELEVATOR SYSTEMS INSTALLED. THE ROAMALERT CONTROLLERS ARE MOUNTED ON TOP OF THE ELEVATOR CABS AND HAVE NO NURSE CALL ALARM CONTACTS. PROVIDE NEW SYSTEM AND INTEGRATE THE NEW NURSE CALL SYSTEM TO THESE CONTACTS AND PROGRAM ACCORDINGLY. CURRENTLY THE HOME ELEVATORS ARE MAINTAINED BY KONE. THE CONTRACTOR SHALL CARRY THE COST ASSOCIATED TO HAVING KONE PROVIDED THE REQUIRED SCOPE OF WORK TO INTEGRATE THE ROAMALERT ELEVATOR SYSTEMS TO THE NEW NURSE CALL SYSTEM.
- NEW NURSE CALL TO MONITOR ALL DOORS EQUIPPED WITH MAGLOCK PROVIDE NEW DOOR CONTACTS AND ALL WIRING BACK TO NURSE CALL SYSTEM AS REQUIRED. REFER TO 3/E-700 AND 4/E-700 FOR DETAILS.
- NURSE CALL SYSTEM MONITOR.
- LOCATION OF NURSE CALL COMPUTER AND MONITOR REFER TO E-601 FOR DETAILS.
- REFER TO TYPICAL DETAILS E-700 FOR RESIDENT BEDROOM & WASHROOM NURSE CALL LAYOUT.
- CONTRACTOR TO COMPLETE THE INSTALLATION OF THE NEW NURSE CALL SYSTEM AND THE SUBSEQUENT REMOVAL OF THE EXISTING NURSE CALL SYSTEM AS PER GENERAL NOTES ON E-001.
THE SYSTEM WILL BE TRANSFERRED WING BY WING AND/OR FLOOR BY FLOOR BASIS. WHEN A WING/FLOOR IS COMPLETE, ACTIVATE THE NEW SYSTEM. COMMISSIONING AND TRAIN STAFF ON HOW TO OPERATE IT AND THEN REMOVE THE EXISTING SYSTEM COMPLETELY. REMOVE ALL EXISTING WIRES AND CAP OFF WITH PAINTED BLANK COVER PLATES.





NOTES

1. ELECTRICAL CONTRACTOR TO PROVIDE A NEW WIRELESS NURSE SYSTEM COMPLETE WITH:
WIRELESS REPEATERS ALLOW FOR ONE (1) 120V, 15A-1P EMERGENCY CIRCUIT TO FEED WIRELESS REPEATERS COMPLETE WITH 2#12 AWG IN 19mm EMT CONDUIT FOR THIS FLOOR AREA.

ELECTRICAL CONTRACTOR TO PROVIDE AN OPTION WITH ALTERNATE PRICE FOR WIRED NURSE CALL SYSTEM. EXACT LOCATION OF DEVICES TO BE DETERMINED ON SITE. EQUIPMENT AND CABLING AS RECOMMENDED BY MANUFACTURER. CABLING IS NOT REQUIRED TO BE RUN IN CONDUIT WHERE CONCEALED ABOVE CEILINGS AND RUN IN WALLS. HOWEVER, EXISTING CONDUITS MAY BE REUSED IF SUITABLE FOR INSTALLATION OF NEW WIRING PROVIDED THE NEW SYSTEM IS FUNCTIONAL PRIOR TO REMOVAL OF EXISTING SYSTEM. THE OWNER CANNOT ADVISE ON THE SUITABILITY OF EXISTING CONDUITS AS THE CONDITION OF THE CONDUITS IS UNKNOWN. ALL WIRING MUST BE RUN IN CONDUIT OR SURFACE RACEWAY WHERE EXPOSED.

NURSE CALL DOME LIGHTS ARE NOT REQUIRED NEITHER WIRELESS NOR WIRED NURSE CALL SYSTEMS.
IF DOME LIGHT IS REQUIRED FOR SOME SYSTEM OR TO BE USED AS A HUB, IT SHALL BE LOCATED ABOVE ACCESSIBLE CEILINGS.

1. DRYWALL CEILING IN THIS AREA. NURSE CALL SYSTEM DEVICES SHALL BE INSTALLED ON EXISTING DRYWALL CEILINGS.

2. T-BAR CEILING IN THIS AREA. NURSE CALL SYSTEM DEVICES SHALL BE INSTALLED ON EXISTING CEILING TILES.

3. EXACT LOCATION FOR NURSE CALL SYSTEM CONSOLE AND NURSE CALL ANNUNCIATOR TO BE DETERMINED ON SITE.

4. LOCATION OF NURSE CALL SYSTEM PANEL.

5. NURSE CALL SYSTEM MONITOR.

6. REFER TO TYPICAL DETAILS E-700 FOR RESIDENT BEDROOM & WASHROOM NURSE CALL LAYOUT

7. NEW NURSE CALL TO MONITOR ALL DOORS EQUIPPED WITH MAGLOCK PROVIDE NEW DOOR CONTACTS AND ALL WIRING BACK TO NURSE CALL SYSTEM AS REQUIRED. REFER TO 3E-700 AND 4E-700 FOR DETAILS.

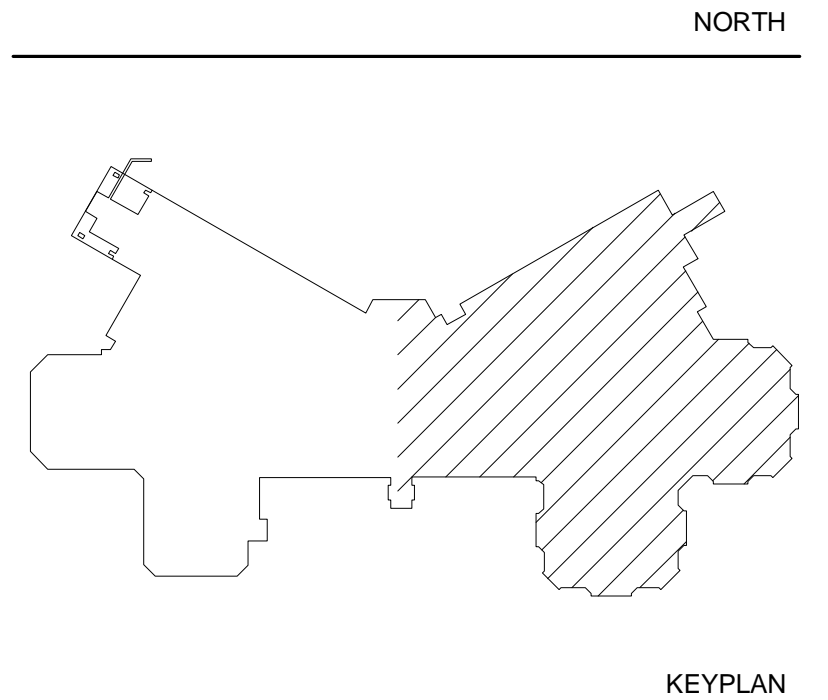
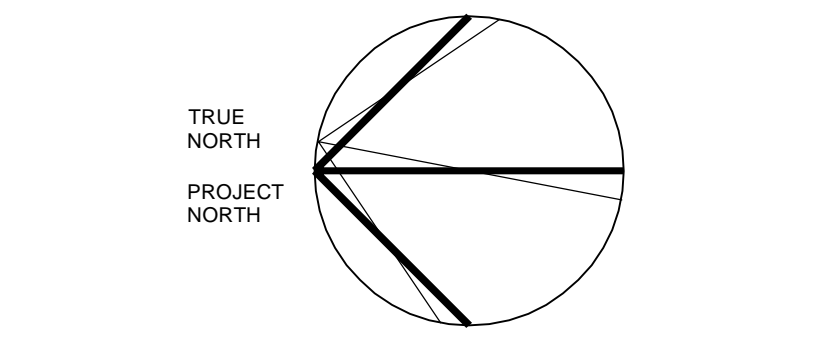
8. CONTRACTOR TO COMPLETE THE INSTALLATION OF THE NEW NURSE CALL SYSTEM AND THE SUBSEQUENT REMOVAL OF THE EXISTING NURSE CALL SYSTEM AS PER GENERAL NOTES ON E-601.

THE SYSTEM WILL BE TRANSFERRED WING BY WING AND/OR FLOOR BY FLOOR BASIS. WHEN A WING/FLOOR IS COMPLETE, ACTIVATE THE NEW SYSTEM, COMMISSIONING AND TRAIN STAFF ON HOW TO OPERATE IT AND THEN REMOVE THE EXISTING SYSTEM COMPLETELY. REMOVE ALL EXISTING WIRES AND CAP OFF WITH PAINTED BLANK COVER PLATES.

NOTES:
CONTRACTOR MUST CHECK & VERIFY ALL DIMENSIONS ON THE JOB.
DO NOT SCALE DRAWINGS.
ALL DRAWINGS, SPECIFICATIONS AND RELATED DOCUMENTS ARE THE COPYRIGHT PROPERTY OF THE ENGINEER AND MUST BE RETURNED UPON REQUEST. REPRODUCTION OF DRAWINGS, SPECIFICATIONS AND RELATED DOCUMENTS IN PART OR IN WHOLE IS FORBIDDEN WITHOUT THE WRITTEN PERMISSION OF THE ENGINEER.
THIS DRAWING IS NOT TO BE USED FOR CONSTRUCTION UNTIL SIGNED BY THE ENGINEER.

CROSSEY
ENGINEERING
LTD.

2255 Sheppard Avenue. E.
Suite E 331
North York, On M2J 4Y1
(416)497.3111 fax (416)497.7210



CEL #17504.E02

No.	Revision Description	Date
1.	ISSUED FOR 75% REVIEW	2018-01-26
2.	ISSUED FOR COSTING	2018-03-07
3.	ISSUED FOR TENDER	2018-04-09
4.	ISSUED FOR BUILDING PERMIT	2018-05-07
5.	ISSUED FOR ADD E01	2018-05-10
6.	ISSUED FOR CONSTRUCTION	2018-10-15
7.	FOR AS-BUILTS	2019-08-20

CUMMER LODGE
Home for the Aged

FIRE ALARM AND
NURSE CALL SYSTEM
REPLACEMENT

205 CUMMER AVENUE
WILLOWDALE, ON M2M 2E8

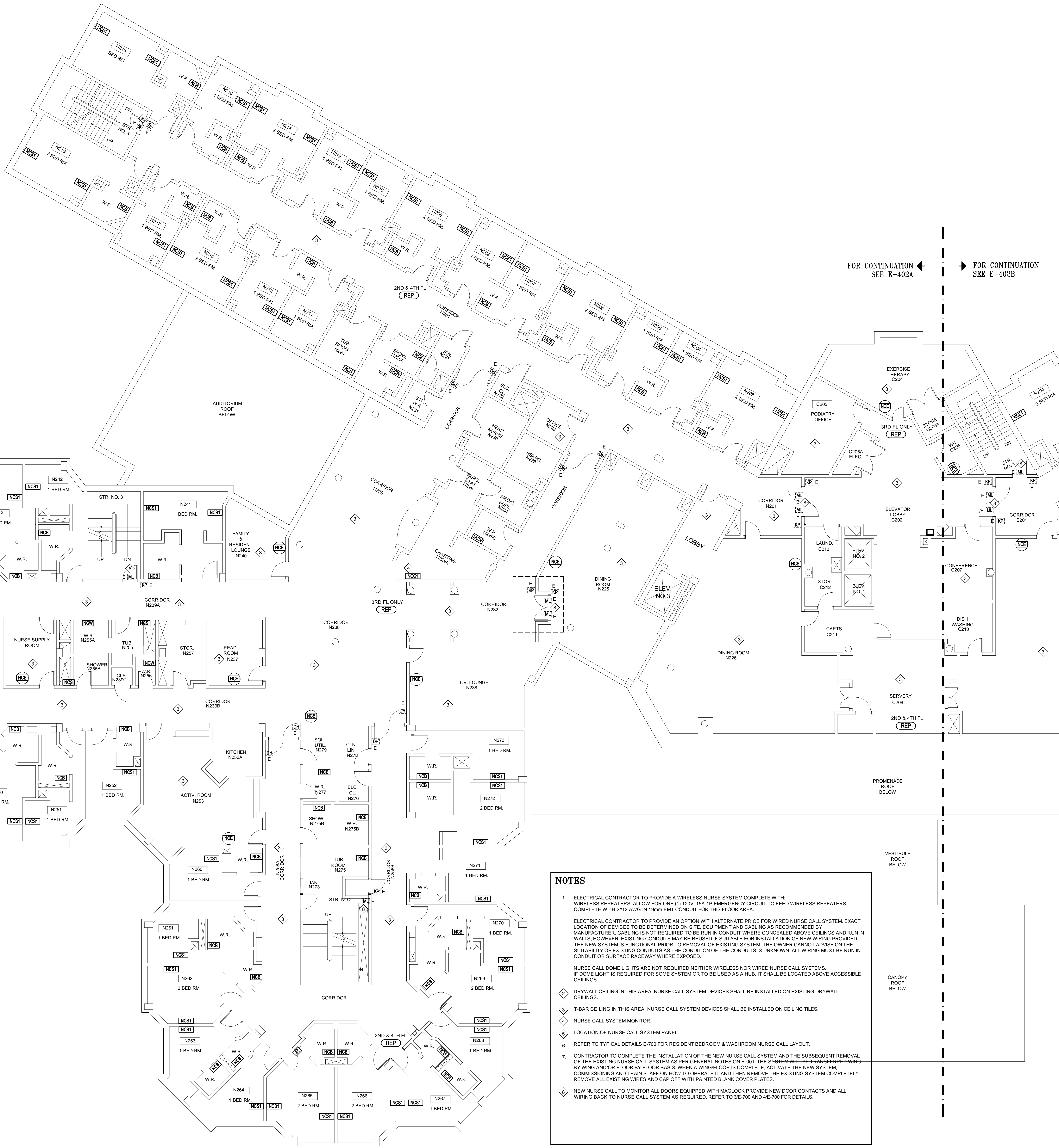
GROUND FLOOR
NURSE CALL SYSTEM LAYOUT
SOUTHBOUND

Title
LN
Drawn by
NN/LN
Checked by
17504.F01
Project No.

NOVEMBER 2017
date
Scale

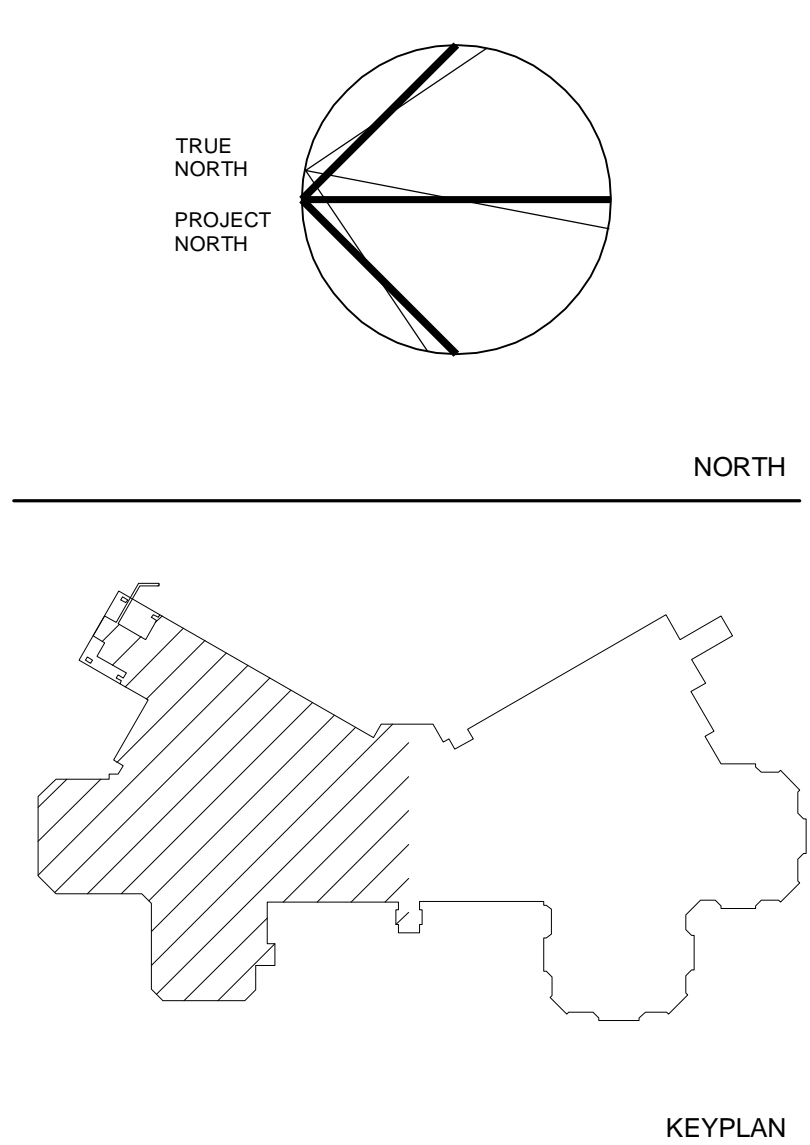
E-401B

Drawing no.



CROSSEY
ENGINEERING
LTD.

2255 Sheppard Avenue. E.
Suite E-331
North York, On M2J 4Y1
(416)497.3111 fax (416)497.7210



CEL #17504.E02

No.	Revision Description	Date
1.	ISSUED FOR 75% REVIEW	2018-01-26
2.	ISSUED FOR COSTING	2018-03-07
3.	ISSUED FOR TENDER	2018-04-09
4.	ISSUED FOR BUILDING PERMIT	2018-06-07
5.	ISSUED FOR ADD E01	2018-05-10
6.	ISSUED FOR CONSTRUCTION	2018-10-15
7.	FOR AS-BUILTS	2019-08-20

CUMMER LODGE Home for the Aged

FIRE ALARM AND NURSE CALL SYSTEM REPLACEMENT

205 CUMMER AVENUE
WILLOWDALE, ON M2M 2E8

TYPICAL 2ND, 3RD & 4TH FLOOR
NURSE CALL SYSTEM LAYOUT
NORTH BOUND

Title
LN
Drawn by
NN/LN
Checked by
17504.F01
Project No.

NOVEMBER 2017
date
1:100
Scale

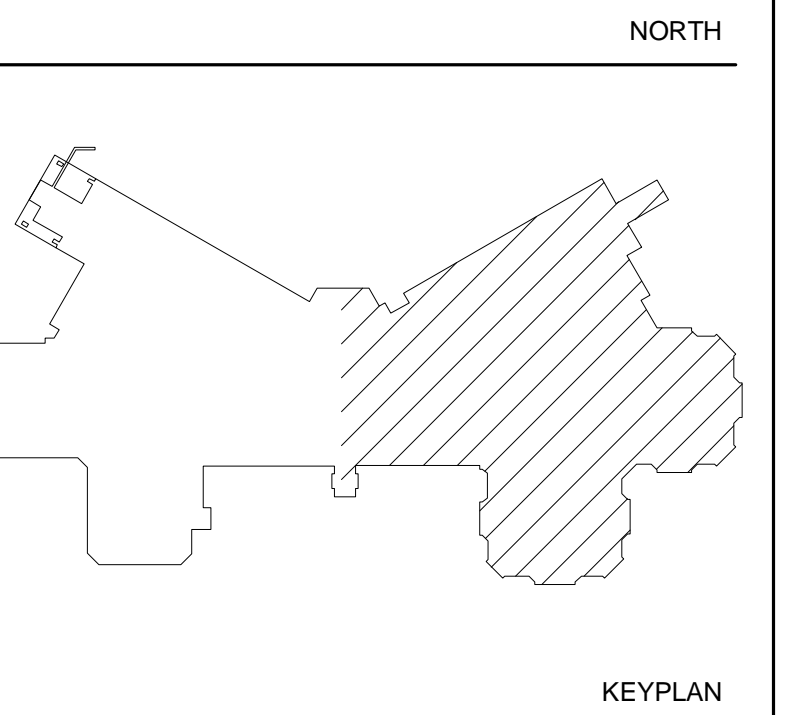
E-402A

Drawing no.

- ### NOTES
- ELECTRICAL CONTRACTOR TO PROVIDE A WIRELESS NURSE SYSTEM COMPLETE WITH:
WIRELESS REPEATERS: ALLOW FOR ONE (1) 120V, 15A-1P EMERGENCY CIRCUIT TO FEED WIRELESS REPEATERS.
COMPLETE WITH 2#12 AWG IN 19mm EMT CONDUIT FOR THIS FLOOR AREA.
 - ELECTRICAL CONTRACTOR TO PROVIDE AN OPTION WITH ALTERNATE PRICE FOR WIRED NURSE CALL SYSTEM. EXACT LOCATION OF DEVICES TO BE DETERMINED ON SITE. EQUIPMENT AND CABLING AS RECOMMENDED BY MANUFACTURER. CABLING IS NOT REQUIRED TO BE RUN IN CONDUIT WHERE CONCEALED ABOVE CEILINGS AND RUN IN WALLS. HOWEVER, EXISTING CONDUITS MAY BE REUSED IF SUITABLE FOR INSTALLATION OF NEW WIRING PROVIDED THE NEW SYSTEM IS FUNCTIONAL PRIOR TO REMOVAL OF EXISTING SYSTEM. THE OWNER CANNOT ADVISE ON THE SUITABILITY OF EXISTING CONDUITS AS THE CONDITION OF THE CONDUITS IS UNKNOWN. ALL WIRING MUST BE RUN IN CONDUIT OR SURFACE RACEWAY WHERE EXPOSED.
 - NURSE CALL DOME LIGHTS ARE NOT REQUIRED NEITHER WIRELESS NOR WIRED NURSE CALL SYSTEMS. IF DOME LIGHT IS REQUIRED FOR SOME SYSTEM OR TO BE USED AS A HUB, IT SHALL BE LOCATED ABOVE ACCESSIBLE CEILINGS.
 - DRYWALL CEILING IN THIS AREA. NURSE CALL SYSTEM DEVICES SHALL BE INSTALLED ON EXISTING DRYWALL CEILINGS.
 - T-BAR CEILING IN THIS AREA. NURSE CALL SYSTEM DEVICES SHALL BE INSTALLED ON CEILING TILES.
 - NURSE CALL SYSTEM MONITOR.
 - LOCATION OF NURSE CALL SYSTEM PANEL.
 - REFER TO TYPICAL DETAILS E-700 FOR RESIDENT BEDROOM & WASHROOM NURSE CALL LAYOUT.
 - CONTRACTOR TO COMPLETE THE INSTALLATION OF THE NEW NURSE CALL SYSTEM AND THE SUBSEQUENT REMOVAL OF THE EXISTING NURSE CALL SYSTEM AS PER GENERAL NOTES ON E-001. THE SYSTEM WILL BE TRANSFERRED WING BY WING AND/OR FLOOR BY FLOOR BASIS. WHEN A WING/FLOOR IS COMPLETE, ACTIVATE THE NEW SYSTEM, COMMISSIONING AND TRAIN STAFF ON HOW TO OPERATE IT AND THEN REMOVE THE EXISTING SYSTEM COMPLETELY. REMOVE ALL EXISTING WIRES AND CAP OFF WITH PAINTED BLANK COVER PLATES.
 - NEW NURSE CALL TO MONITOR ALL DOORS EQUIPPED WITH MAGLOCK PROVIDE NEW DOOR CONTACTS AND ALL WIRING BACK TO NURSE CALL SYSTEM AS REQUIRED. REFER TO 3E-700 AND 4E-700 FOR DETAILS.

CROSSEY
ENGINEERING
LTD.

2255 Sheppard Avenue. E.
Suite E 331
North York, On M2J 4Y1
(416)497.3111 fax (416)497.7210



FOR AS-BUILTS	2019-08-20
ISSUED FOR CONSTRUCTION	2018-10-15
ISSUED FOR ADD EOI	2018-05-10
ISSUED FOR BUILDING PERMIT	2018-05-07
ISSUED FOR TENDER	2018-04-09
ISSUED FOR COSTING	2018-03-07
ISSUED FOR 75% REVIEW	2018-01-26
Revision Description	Date

FIRE ALARM AND NURSE CALL SYSTEM REPLACEMENT

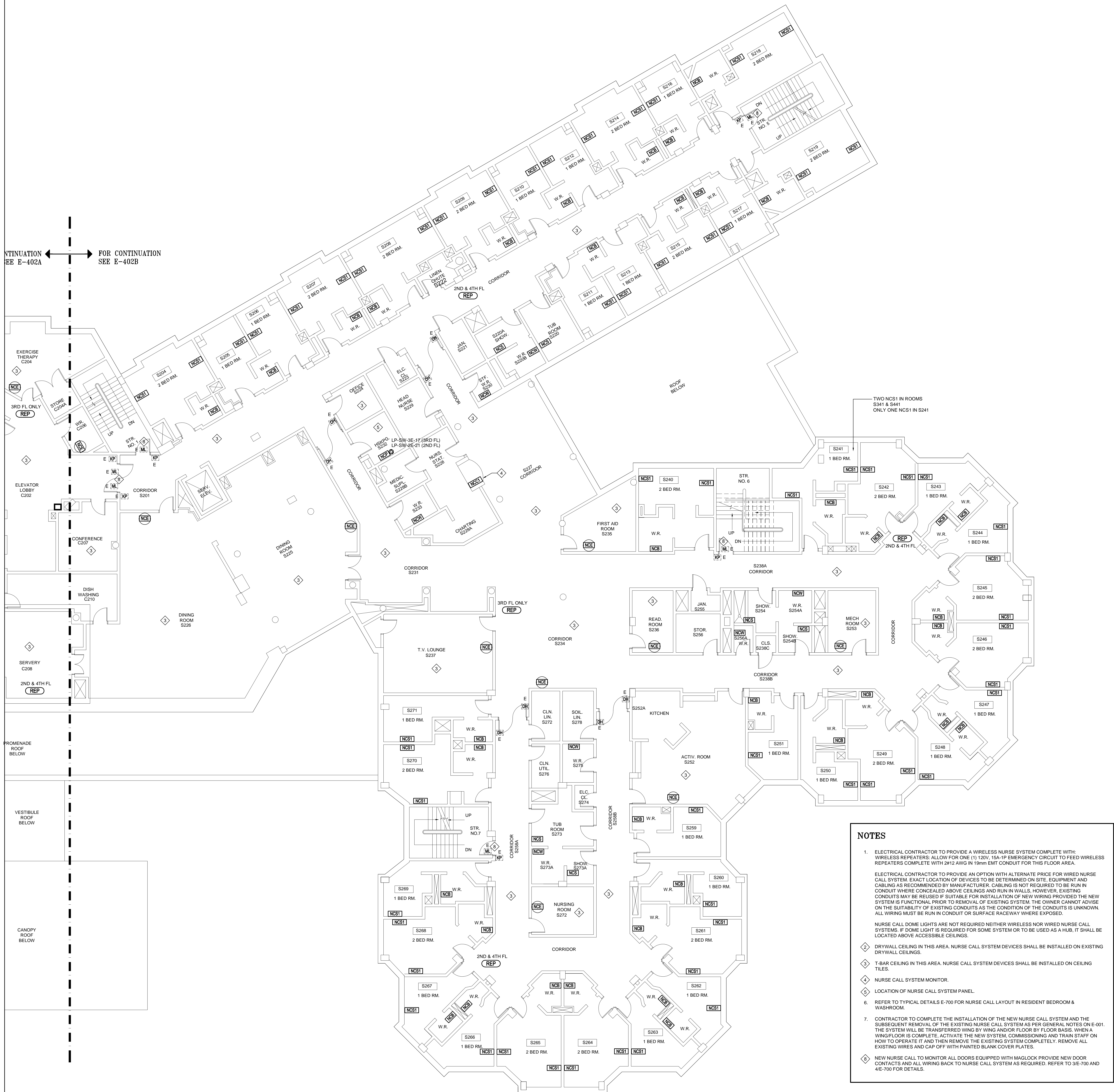
ject

N	NOVEMBER 2017
own by	date
N/LN	1:100
checked by	Scale
7504.F01	
Project No.	

E-402B

Drawing no. _____

ST EDIT: 08/MAY/18 16:19:07



FIRE ALARM SCHEDULE																											
ZONE DESCRIPTION	FULL STATION (FZ)	HEAT OR SMOKE/HEAT DETECTOR (FZ)	AUX. SYSTEM (SZ)	LOSS OF POWER (SZ)	WET PIPE ALARM VALVE (FZ)	FIRE PUMP TROUBLE (FZ)	TROUBLE SUPERVISED VALVE (SZ)	SPRINKLER FLOW SWITCH (FZ)	LOSS OF PRESSURE (SZ)	DIESEL GENERATOR TROUBLE (SZ)	DUCT DETECTOR SUPPLY (FZ)	DUCT DETECTOR RETURN (FZ)	STARTUP SIGNAL AUTO & MANUAL (CZ)	SHUTDOWN SIGNAL AUTO & MANUAL (CZ)	HORN/STR CCT. A (RZ)	HORN/STR CCT. B (RZ)	AUDIO CCT. 1	AUDIO CCT. 2	AUDIO CCT. 3	AUDIO CCT. 4	AUDIO CCT. 5	AUDIO CCT. 6	AUDIO CCT. 7	FIRE ALARM CONN (CZ)	FIRE SUPPR. SYSTEM (FZ)	REMARK	
BASEMENT FLOOR																											
BASEMENT	FZB-1	FZB-1															BZB-1	BZB-2	BZB-3	BZB-4	BZB-5	BZB-6					
BASEMENT MAIN ELECTRICAL ROOM & GEN ROOM		FZB-2																									
BASEMENT TRANSFORMER VAULT		FZB-3																									
CORE ELEVATOR PIT & SHAFT		FZB-4																									
NORTH EAST ELEVATOR PIT & SHAFT		FZB-5																									
SOUTH EAST ELEVATOR PIT & SHAFT		FZB-6																									
ELEVATOR MACHINE ROOM SOUTH		FZB-8																									
BASEMENT CORE ELEVATOR LOBBY		FZB-13																									
BASEMENT SOUTH ELEVATOR LOBBY		FZB-14																									
BASEMENT SOUTH		FZB-12																									
BASEMENT NORTH		FZB-15																									
TUNNEL	FZW-1	FZW-1																								◇> FZW-1.2	
ROOF	FZK-1	FZK-1																									
KITCHEN SUPPRESS. SYSTEM																											
BASEMENT NORTH SPRINKLER FLOW (MAIN)							FZB-7																				
BASEMENT NORTH SPRINKLER FLOW #2							FZB-9																				
BASEMENT CORE SOUTH SPRINKLER FLOW #1							FZB-10																				
BASEMENT NORTH & MECH RM SPRINKLER FLOW							FZB-11																				
BASEMENT SOUTH EAST & TUNNEL SPRINKLER FLOW							FZB-18																				
BASEMENT SOUTH WEST SPRINKLER FLOW							FZB-19																				
FIRE PUMP LOSS OF POWER				SZB-1																							
FIRE PUMP SUCTION							SZB-2																				
FIRE PUMP DISCHARGE							SZB-3																				
FIRE PUMP BYPASS VALVE IN							SZB-4																				
FIRE PUMP BYPASS VALVE OUT							SZB-5																				
NWINE SUPERVISED VALVE							SZB-6																				
CORE/WISE SUPERVISED VALVE							SZB-7																				
BACK FLOW OUTLET SUPERVISED VALVE							SZB-8																				
BACK FLOW INLET SUPERVISED VALVE							SZB-9																				
MAIN SPRINKLER INCOMING VALVE							SZB-10																				
OUTSIDE FIRE HYDRANT SUPERVISED VALVE							SZB-11																				
MAIN STAND PIPE & SPRINKLER VALVE							SZB-12																				
BASEMENT NORTH SPRINKLER LOW PRESSURE							SZB-20																				
BASEMENT SOUTH SPRINKLER LOW PRESSURE							SZB-21																				
BASEMENT SE & TUNNEL SUPERVISED VALVE							SZB-29																				
MAIN SPRINKLER LOW PRESSURE									SZB-33																		
STANDPIPE VALVE					SZB-23																						
STANDPIPE SW RISER #9					SZB-24																						
STANDPIPE SW RISER #10					SZB-25																						
STANDPIPE SW RISER #7					SZB-27																						
STANDPIPE SE RISER #8					SZB-28																						
STANDPIPE NW					SZB-30																						
STANDPIPE NW					SZB-31																						
STANDPIPE NW					SZB-32																						
GENERATOR TROUBLE			SZB-13																								
GENERATOR RUNNING			SZB-14																								
GENERATOR MAIN TANK LOW FUEL			SZB-15																								
GENERATOR LOSS OF POWER			SZB-16																								
CORE ELEVATORS (1&2) PIT AND SHAFT		FZ-ELEV-1																									
NE ELEVATOR PIT AND SHAFT		FZ-ELEV-2																									
SE ELEVATORS PIT AND SHAFT		FZ-ELEV-3																									
BASEMENT DOOR HOLDER RELEASE RELAYS																								CZB-1			
SF-1																										◇	
SF-2																										◇	
SF-3																										◇	
SF-4																										◇	
SF-6																										◇	
AH-2																										◇	
RF-2											FZU-2															◇	
AH-3																										◇	
RF-3																										◇	
AH-4											FZU-3															◇	
RF-4																										◇	
AH-5																										◇	
RF-5											FZU-4															◇	
AH-6																										◇	
RF-6																										◇	
AH-7																											

[illegible]

**CROSSEY
ENGINEERING
LTD.**

2255 Sheppard Avenue. E.
Suite E 331
North York, On M2J 4Y1
(416)497.3111 fax (416)497.7210

KEYPLAN

See

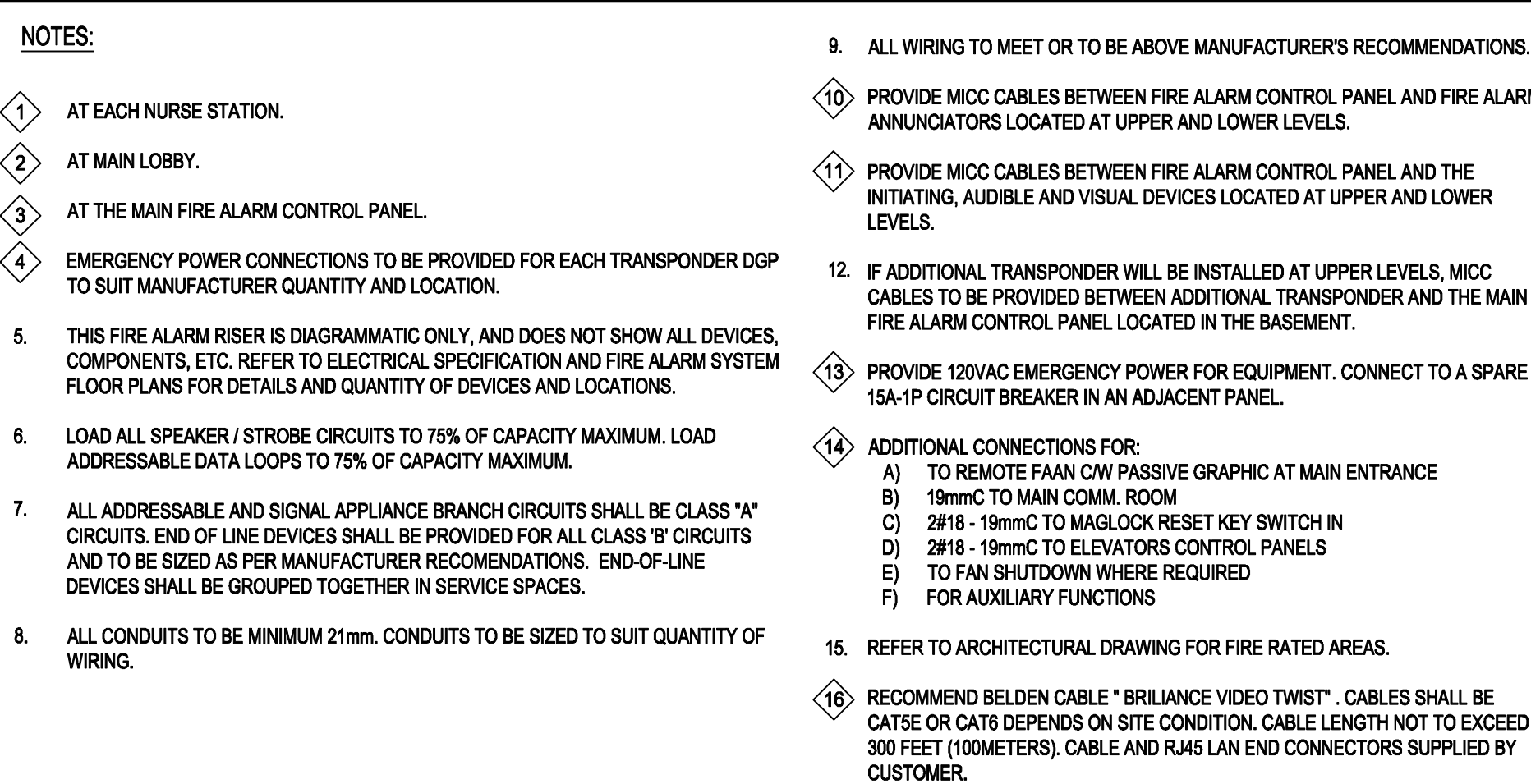
	FOR AS-BUILTS	2019-08-26
6.	ISSUED FOR CONSTRUCTION	2018-10-01
5.	ISSUED FOR ADD EOI	2018-05-17
4.	ISSUED FOR BUILDING PERMIT	2018-05-01
3.	ISSUED FOR TENDER	2018-04-06
2.	ISSUED FOR COSTING	2018-03-06
1.	ISSUED FOR 75% REVIEW	2018-01-21
No.	Revision Description	Date

FIRE ALARM AND NURSE CALL SYSTEM REPLACEMENT

Project

Title	
LN	NOVEMBER 2017
Drawn by	date
NN/LN	N.T.S.
Checked by	Scale
17504.F01	
Project No.	

Drawing no.



CROSSEY
ENGINEERING
LTD.

2255 Sheppard Avenue. E.
Suite E 331
North York, On M2J 4Y1
(416)497.3111 fax (416)497.7210

PLAN

Seal

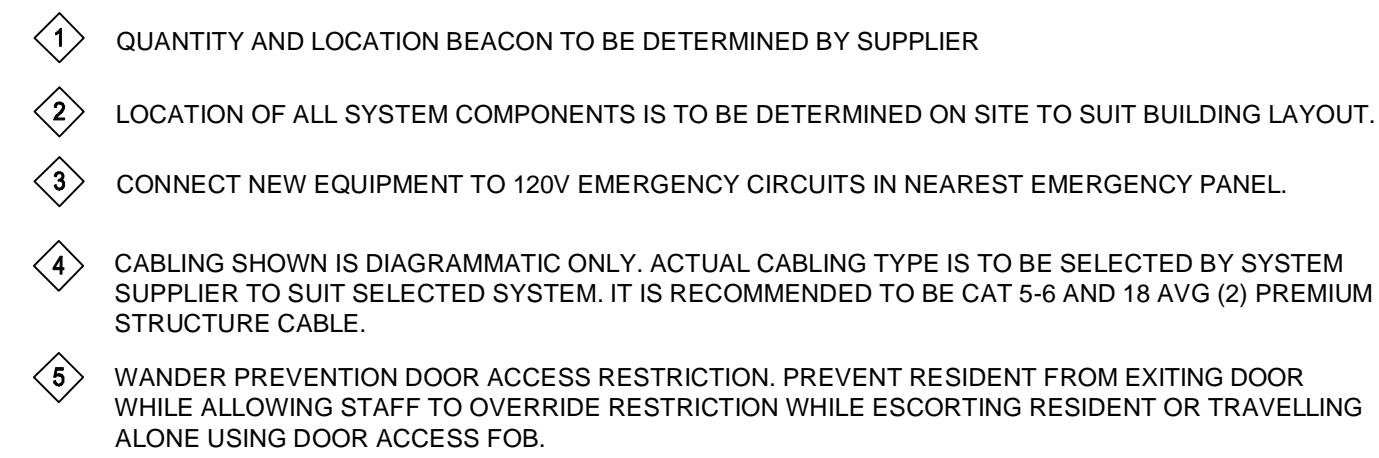
No.	Revision Description	Date
	FOR AS-BUILTS	2019-08-20
6.	ISSUED FOR CONSTRUCTION	2018-10-15
5.	ISSUED FOR ADD EOI	2018-05-10
4.	ISSUED FOR BUILDING PERMIT	2018-05-07
3.	ISSUED FOR TENDER	2018-04-09
2.	ISSUED FOR COSTING	2018-03-07
1.	ISSUED FOR 75% REVIEW	2018-01-26

FIRE ALARM AND NURSE CALL SYSTEM REPLACEMENT

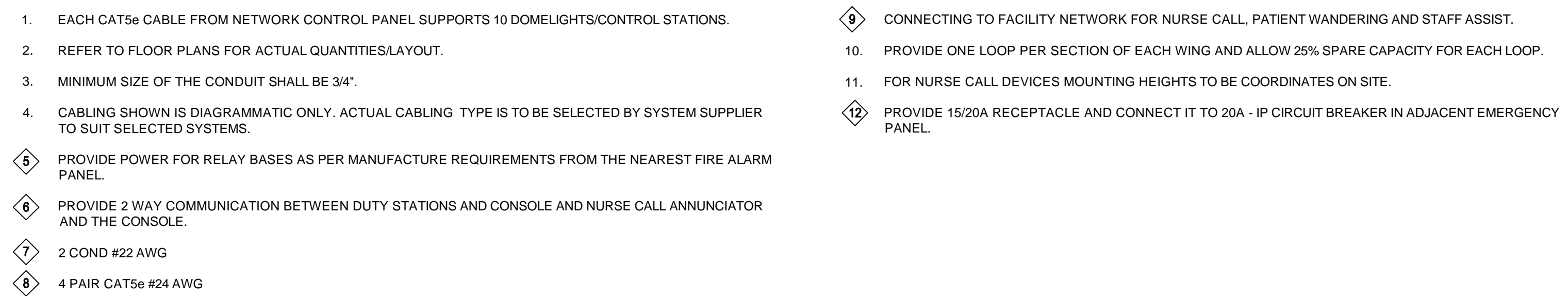
Project

Title	
LN	NOVEMBER 2017
Drawn by	date
NN/LN	N.T.S.
Checked by	Scale
17504.F01	
Project No.	

Drawing no.



1	WIRE
E-601	N.T.S.



2	WIR
E-601	N.T.S.

CROSSEY
ENGINEERING
LTD.

2255 Sheppard Avenue. E.
Suite E 331
North York, On M2J 4Y1
(416)497.3111 fax (416)497.7210

PLAN

Seal

	FOR AS-BUILTS	2019-08-20
6.	ISSUED FOR CONSTRUCTION	2018-10-15
5.	ISSUED FOR ADD E01	2018-05-10
4.	ISSUED FOR BUILDING PERMIT	2018-05-07
3.	ISSUED FOR TENDER	2018-04-09
2.	ISSUED FOR COSTING	2018-03-07
1.	ISSUED FOR 75% REVIEW	2018-01-26
No.	Revision Description	Date

FIRE ALARM AND NURSE CALL SYSTEM REPLACEMENT

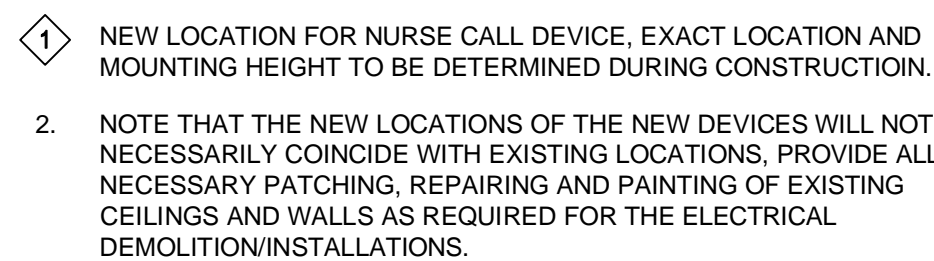
Project

Title	
LN	NOVEMBER 2017
Drawn by	date
NN/LN	N.T.S.
Checked by	Scale
17504.F01	
Project No.	

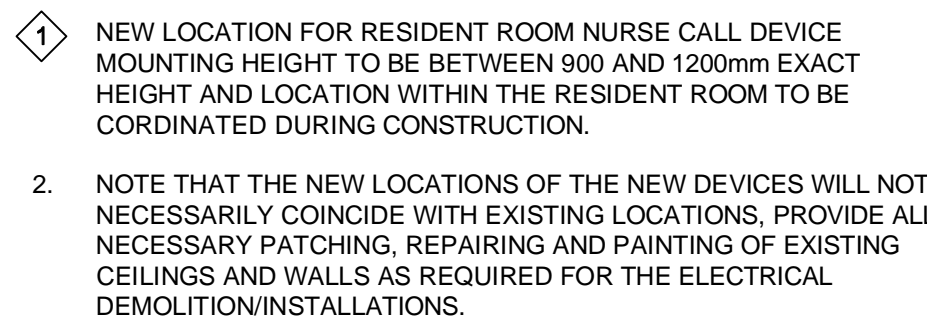
Drawing no. _____



1. DRAWINGS DO NOT SHOW ALL EXISTING SPRINKLER VALVES TO BE CONNECTED TO NEW FIRE ALARM CONNECTIONS. ELECTRICAL CONTRACTOR TO INSPECT ON SITE AND VERIFY THE EXISTING SPRINKLER ZONES, VALVES THAT REQUIRES FIRE ALARM REPLACEMENT PRIOR TO THE SUBMISSION OF BID.
2. THIS DRAWING IS A COPY OF THE ORIGINAL DRAWINGS FOR THE BUILDING AND DO NOT NECESSARILY SHOW ALL RENOVATIONS THAT HAVE OCCURRED IN THE BUILDING. THE INTENT OF THIS DRAWING IS TO SHOW THE GENERAL EXTENT AND SCOPE OF WORK TO ACCOMMODATE THE PARTIAL DEMOLITION OF THE BUILDING.
3. CONSULT WITH THE OWNER AND CREATE A LIST OF ANY ITEMS TO BE SAVED AND THE CONDITION THEY ARE IN. REMOVE FROM SITE ALL REMAINING DEMOLISHED ELECTRICAL MATERIALS. WHERE DEVICES ARE TO BE HANDED OVER TO OWNER, STORE IN A LOCATION DIRECTED ON SITE.



1 TYPICAL
E-700 N.T.S.

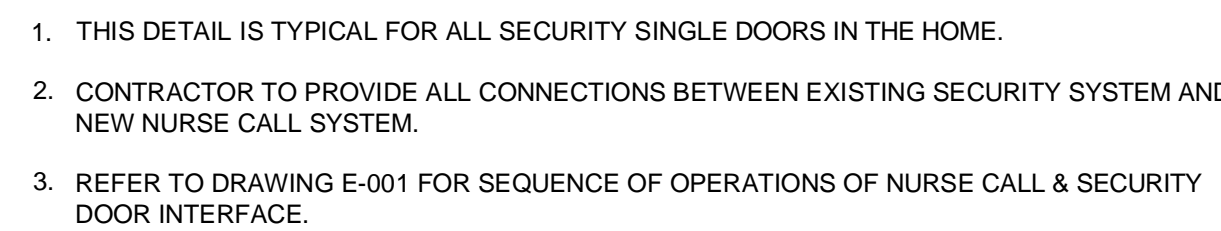


2	TYPICAL
E-700	N.T.S.

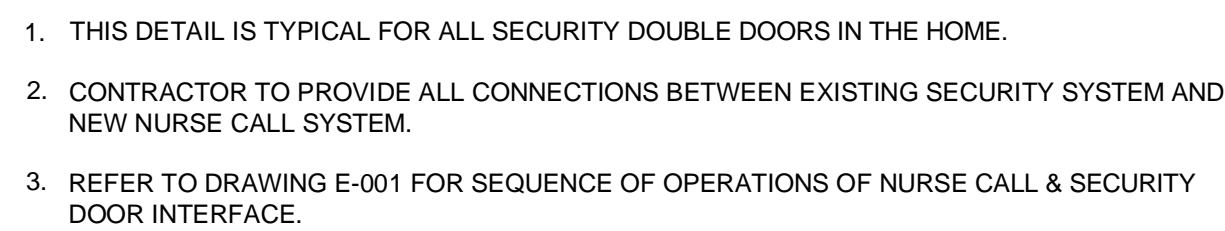
THE MAGLOCKS WILL BE INSTALLED AS PER CBC 3.4.16 (4.16):

- (A) THE BUILDING IS EQUIPPED WITH A FIRE ALARM SYSTEM;
- (B) THE LOCKING DEVICE, AND ALL SIMILAR DEVICES, HAVE ACCESS TO EXIT LEADING TO THE EXIT DOOR, ARE INSTALLED AS AUXILIARY DEVICES TO THE FIRE ALARM SYSTEM AND RELEASE IMMEDIATELY UPON ACTIVATION OF THE ALARM SIGNAL, WHERE A SINGLE STAGE FIRE ALARM SYSTEM IS INSTALLED;
- (C) THE LOCKING DEVICE RELEASES IMMEDIATELY UPON LOSS OF POWER TO THE FIRE ALARM CONTROL PANEL OR LOSS OF POWER CONTROLLING THE FIRE ALARM SYSTEM;
- (D) THE LOCKING DEVICE RELEASES IMMEDIATELY UPON ACTIVATION OF A MANUALLY OPERATED SWITCH READILY ACCESSIBLE ONLY TO AUTHORIZED PERSONNEL AND LOCATED NEAR THE MAIN ENTRANCE OF THE BUILDING OR IN THE GENERAL ALARM CONTROL FACILITY;
- (E) THE LOCKING DEVICE RELEASES IMMEDIATELY UPON A FAULT BEING DETECTED IN THE ELECTRICAL CIRCUIT BETWEEN THE FIRE ALARM CONTROL PANEL AND THE CONTROLLER OF THE LOCKING DEVICE;
- (F) THE LOCKING DEVICE RELEASES IMMEDIATELY UPON THE OPERATION OF A MANUAL PULL STATION FOR THE FIRE ALARM SYSTEM LOCATED ON THE WALL NOT MORE THAN 1.8 M (6 FT) FROM THE DOOR;
- (G) A LEGIBLE SIGN HAVING THE WORDS EMERGENCY EXIT UNLOCKED BY FIRE ALARM IS PERMANENTLY MOUNTED ON THE DOOR;
- (H) THE SIGN IS AT LEAST 25 CM (10 IN) HIGH WITH A CONTRASTING BACKGROUND AND IS NOT TO BE COVERED BY ANY OTHER SIGN;
- (I) UPON RELEASE, THE LOCKING DEVICE MUST BE RESET MANUALLY BY THE ACTIVATION OF THE SWITCH REFERRED TO IN CLAUSE (D);
- (J) THE OPERATION OF ANY BY-PASS SWITCH, WHERE PROVIDED FOR TESTING OF THE FIRE ALARM SYSTEM, CAUSES AN AUDIBLE SIGNAL AND A VISUAL SIGNAL TO BE INDICATED AT THE FIRE ALARM ANNUNCIATOR PANEL AND AT THE MONITORING STATION;
- (K) EMERGENCY LIGHTING IS PROVIDED AT THE DOORS.

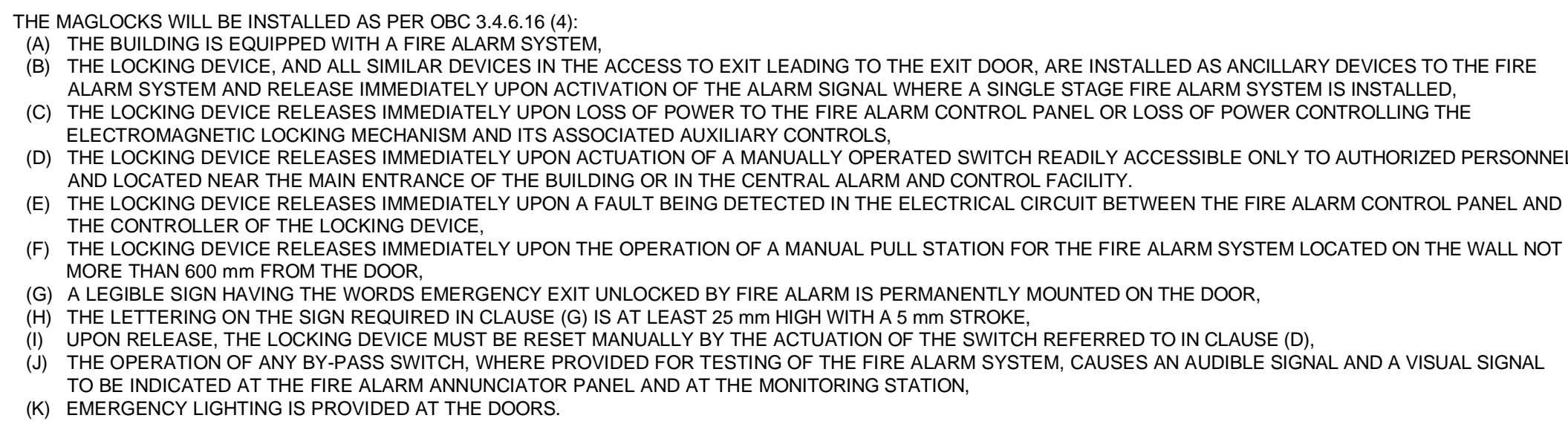
5	MAG
E-700	N.T.



3 NURS
E-700 SCALE: N



4 NURSI
E-700 SCALE: N



5	MAG
E-700	N.T.

2255 Sheppard Avenue. E.
Suite E 331
North York, On M2J 4Y1
(416)497.3111 fax (416)497.7210

KEYPLAN

Seal

[illegible]

FIRE ALARM AND NURSE CALL SYSTEM REPLACEMENT

205 CUMMER AVENUE
WILLOWDALE, ON M2M 2E8

Project

ELECTRICAL DETAILS

Title	
LN	NOVEMBER 2017
Drawn by	date
NN/LN	N.T.S.
Checked by	Scale
17504.F01	
Project No.	

E-700

Drawing no