

**Ascension Catholic Elementary School Renovation
PROJECT NO. 24137
HOSSACK ARCHITECTURE**

ADDENDUM NO. 3

April 01, 2025

The following additions, deletions, modifications and clarifications issued herein are hereby an integral part of the Tender and Contract Documents. Minor Typographic or spelling mistakes in the Contract Documents which do not significantly affect the meaning of the sentence or phrase in which they occur may not necessarily be corrected by Addenda.

GENERAL

1. Ensure that all parties submitting bids are aware of this **Addendum No. 3** and its contents.
2. **Contents:** Addendum No. 3 - in its entirety consists of the following:
 - .1 two (2) typed pages of instructions and one (1) drawing 30" x 42".
 - .2 Electrical Addendum No.2 – one (1) typed page of instructions and three (3) drawings

QUESTIONS & ANSWERS

QUESTION 1: Who is responsible for Div. 21 SC-01 or SC-02

ANSWER 1: SC-01 will be responsible for Div. 21 Sprinklers / Fire Protection.

QUESTION 2: Please confirm if flooring contractors SC-05 are to include terrazzo repairs or the general contractor SC-01. What is the extent? Room finish schedule calls for terrazzo in side entrance 138. There is also terrazzo repair on the 2nd floor.

ANSWER 2: Terrazzo floor repairs are the responsibility of 'SC-05 Flooring' as described in Section 01 12 00 Multiple Contract Summary, item 1.20.4.3.1. For areas requiring additional terrazzo repair from mechanical work that is not indicated on the drawings, this will be covered by the Cash Allowance.

QUESTION 3: Just to clarify we are to include wall tile all walls floors to ceiling ground and 2nd floor. Elevations show 1 wall on the 2nd floor but room finish schedule note 4 calls for new ceramic wall tile in entire room.

ANSWER 3: Washrooms to have wall tile from floor to ceiling.

QUESTION 4: I have been reviewing the mechanical scope with a few different contractors and there are a few units on this roof which they require clarification on. Are we able to tuck the flashings as far up on the 5'x16' curb without having to crane the unit off of the roof (photo attached)?

ANSWER 4: Yes

QUESTION 5: As well, there appears to be a fair amount of electrical that has been fed through tall cones and gas line penetrations which is not to code (photos attached). Are these items that we should be including for to be remediated?

ANSWER 5: Utilities penetrating roof are to be run through cones and goosenecks as outlined in the roofing specifications.

QUESTION 6: Are we replacing the cross broken metal flashings at all of the low to high roof sections

ANSWER 6: Yes, all metal flashing related to the roofing is to be replaced as outlined in roofing specifications.

AMENDMENTS TO SPECIFICATIONS

Item 1: Section 01 12 00 Multiple Contract Summary:

- .1 ADD item 1.7.17 to read as follows:
 - “.17 Division 21 - Sprinklers / Fire Protection
 - .1 As described on drawing M5.0 Proposed Sprinkler Layout – Ground and Second Floor Partial”

Item 2: Section 01 11 00 Summary of Work:

- .1 ADD item 1.37.8.5 and 1.37.8.6 to read as follows:
 - .5 Exterior Roof Mounted Flood Lights (to replace existing).
 - .6 Areas of additional terrazzo repair of existing terrazzo flooring that may be required in addition to the areas already identified on the documents.”

Item 3: Section 09 91 30 Room Finish Schedule:

- .1 REVISE line item as follows:
 - “x211 STAIR C RT/RSTR RR - - EX.LAP - EXIST”

Item 4: Section 10 28 10 Washroom Accessories:

- .1 ADD: item 2.2.6 to read as follows:
 - “.3 Barrier-Free/Tilt Mirrors (designation Type TM):
 - .1 Acceptable Materials: Frost .Stock series. model 941FG Tempered Glass; Bobrick 290 series or Frost F974FT series
 - .2 18. x 24. each.
 - .3 Locations: as shown on drawings.
 - .4 Frames: Type 302 or 304 No. 4 finish stainless steel.
 - .5 Mirror Cushioning: PVC pressure-sensitive foamed tape, 6 mm thick with adhesive on one side.”

AMENDMENTS TO DRAWINGS

Item 5: Drawing A07 Second Floor RCP:

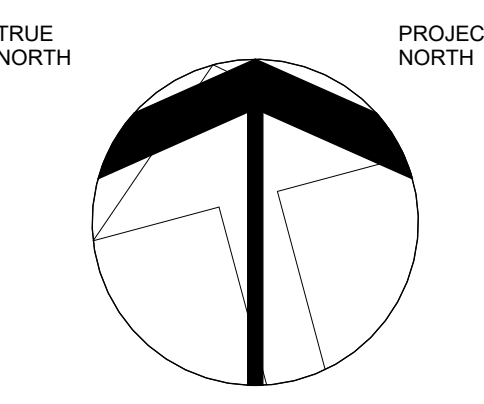
- .1 REPLACE with enclosed drawing in its entirety. (Drawing updated to included existing LAP ceilings in Staff Lounge x217 and in Stair C x211) (New lighting fixtures added in Stair A x200, refer to electrical addendum no.3).

ELECTRICAL

Item 6: Electrical

- .1 Find attached two (1) typed pages of instructions Electrical Addendum No. 1 and three (3) drawings 24” x 36”., issued by Regal., dated April 01, 2025.

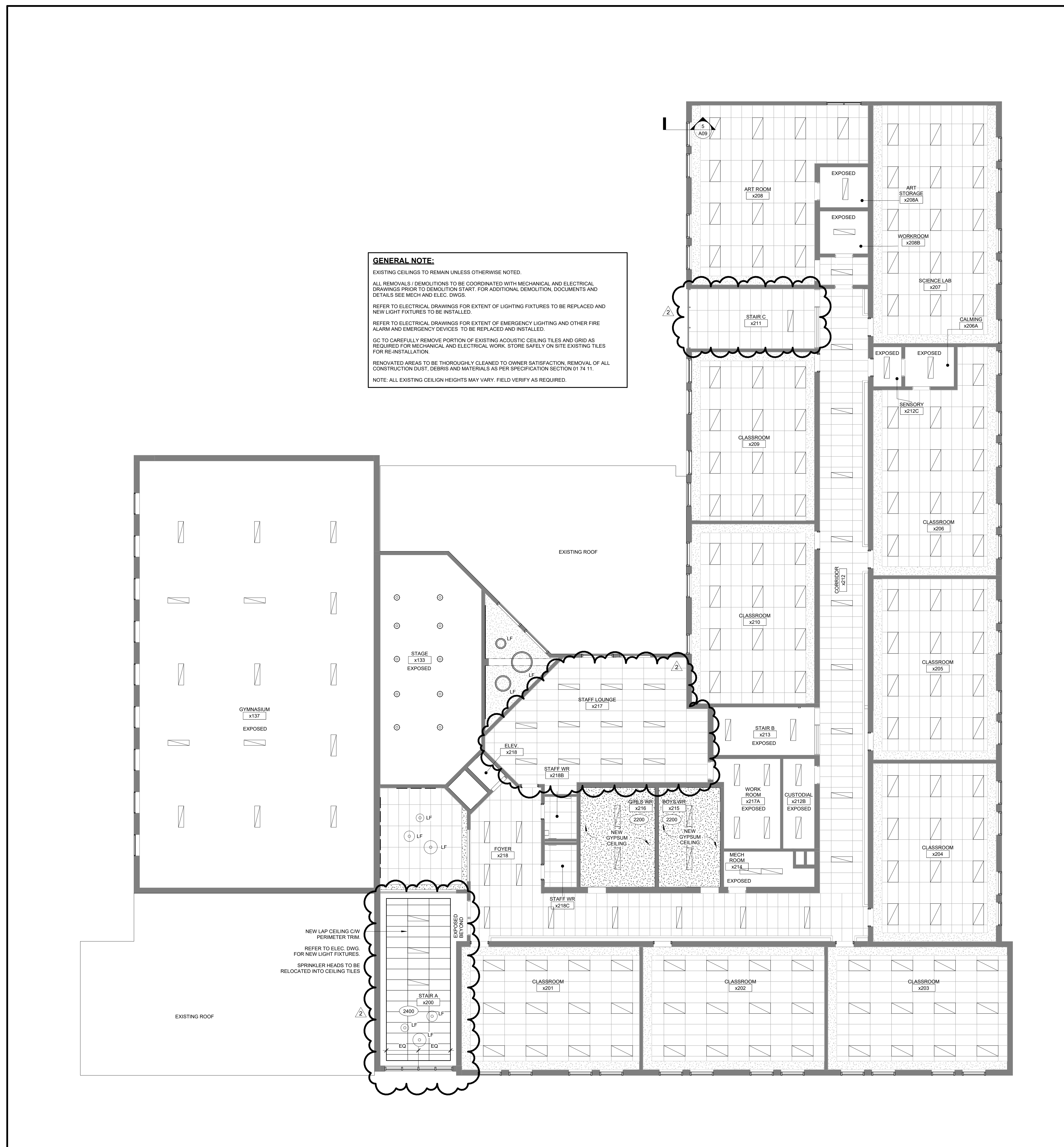
End of Addendum No. 3



RCP LEGEND

- EXISTING PORTIONS OF THE BUILDING NOT PART OF THE SCOPE OF WORK
- EXISTING WALLS TO REMAIN
- LIGHT FIXTURE REFER TO LIGHTING PLANS/LIGHTING SCHEDULES FOR TYPE
- FLUSH MOUNTED LIGHT FIXTURE REFER TO LIGHTING PLANS/LIGHTING SCHEDULES FOR TYPE
- EXISTING LAY IN ACOUSTIC CEILING PANELS UNLESS OTHERWISE NOTED REFER TO SPECS FOR TYPE OF NEW PANELS
- SUPPLY DIFFUSER
- RETURN DIFFUSER
- RADIANT PANEL
- GYPSON BOARD CEILING AND/OR GYPSON BOARD BULKHEAD
- LIGHT FIXTURE, FOR TYPE AND MOUNTING SEE ELEC. DWGS
- LIGHT FIXTURE, FOR TYPE AND MOUNTING SEE ELEC. DWGS
- CEILING HEIGHT FROM FINISHED FLOOR
- GBB GYPSON BOARD BULKHEAD
- SP SPRINKLER HEAD
- WIFI WIFI
- PA PA SPEAKER

GENERAL NOTE:
 EXISTING CEILINGS TO REMAIN UNLESS OTHERWISE NOTED.
 ALL REMOVALS / DEMOLITIONS TO BE COORDINATED WITH MECHANICAL AND ELECTRICAL DRAWINGS PRIOR TO DEMOLITION START. FOR ADDITIONAL DEMOLITION, DOCUMENTS AND DETAILS SEE MECH AND ELEC. DWGS.
 REFER TO ELECTRICAL DRAWINGS FOR EXTENT OF LIGHTING FIXTURES TO BE REPLACED AND NEW LIGHT FIXTURES TO BE INSTALLED.
 REFER TO ELECTRICAL DRAWINGS FOR EXTENT OF EMERGENCY LIGHTING AND OTHER FIRE ALARM AND EMERGENCY DEVICES TO BE REPLACED AND INSTALLED.
 GO TO CAREFULLY REMOVE PORTION OF EXISTING ACOUSTIC CEILING TILES AND GRID AS REQUIRED FOR MECHANICAL AND ELECTRICAL WORK. STORE SAFELY ON SITE. EXISTING TILES FOR RE-INSTALLATION.
 RENOVATED AREAS TO BE THOROUGHLY CLEANED TO OWNER SATISFACTION. REMOVAL OF ALL CONSTRUCTION DUST, DEBRIS AND MATERIALS AS PER SPECIFICATION SECTION 01 74 11.
 NOTE: ALL EXISTING CEILING HEIGHTS MAY VARY. FIELD VERIFY AS REQUIRED.



NEW LAP CEILING CAV PERIMETER TRIM REFER TO ELEC. DWG. FOR NEW LIGHT FIXTURES.
 SPRINKLER HEADS TO BE RELOCATED INTO CEILING TILES

NO.	DESCRIPTION	DATE
1	ISSUED FOR TENDER	03 14 25
2	ADDENDUM NO 3	04 01 25

DRAWINGS ARE NOT TO BE SCALED. CONTRACTOR MUST CHECK AND VERIFY ALL DIMENSIONS AND CONDITIONS ON THE PROJECT. ANY DISCREPANCIES TO THE CONSULTANTS BEFORE PROCEEDING WITH THE WORK. THE USE OF THIS DRAWING OR PART THEREOF IS FORBIDDEN WITHOUT THE WRITTEN APPROVAL OF THE CONSULTANTS.

CERTIFICATE OF PRACTICE #4292

ASCENSION CATHOLIC ELEMENTARY SCHOOL INTERIOR RENOVATION

5205 NEW STREET, BURLINGTON ON L7L 1V3



802 DURURY LANE, (905) 632-6300
 BURLINGTON, ON L7R 2Y2 abrahamc@hcsd.on.ca

SECOND FLOOR RCP



155 - 1938 IRON OAK WAY
 SCARVILLE, ON L5H 1Y8
 (905) 818-4334 ext#7@hossackarch.com

SCALE	1 : 100	PROJECT	24137
DATE	MARCH 2025	DRAWING	AM
DRAWN	PL	CHECKED	PL
PRINT DATE	3/11/2025 4:02:45 PM	REVIT FILE	T:\2015\1512102\Rev\RYT

April 01, 2025

Halton Catholic District School Board
Renovations to Ascension Catholic Elementary School
Hossack Architecture
Project No. 24137

REGAL CONSULTING ENGINEERS INC.
208 Wycroft Road, Suite 200
Oakville, ON L6K 3S3
Phone: 905-844-3913

This addendum forms part of the contract documents and amends the original bidding requirements, drawings and specifications, as noted below.

ELECTRICAL

1. Replace/add the drawings with as under:
 1. Find attached revised electrical drawing E1.0-A-2 with changes shown as clouded.
 2. Find attached revised electrical drawing E3.0-A-2 with changes shown as clouded.
 3. Find attached revised electrical drawing E3.1-A-2 with changes shown as clouded.

End of Addendum E-2

LEGEND	
	FIXTURE TYPE "A1"
	15A, 125V/347V SINGLE POLE SWITCH, S, (TWO POLE), S, (3-WAY), S, (4-WAY), S, (KEY OPERATED), S, (DIMMER), S, (C/W PILOT LIGHT), S, (LOW VOLTAGE), S, (TIMER), S, (OCCUPANCY SENSOR SWITCH), S, (GANGED SWITCHES)
	LIGHTING FIXTURE (LETTER DENOTES THE TYPE OF FIXTURE)
	EMERGENCY LIGHTING FIXTURE (LETTER DENOTES THE TYPE OF FIXTURE)
	EXISTING CEILING MOUNTED OCCUPANCY SENSOR
	EXISTING WALL MOUNTED PIR SENSOR
	ELECTRICAL PANEL
	NCM PDT 10 R/B LOW VOLTAGE CEILING MOUNT SENSOR, PASSIVE DUAL TECHNOLOGY, LARGE MOTION / EXTENDED RANGE 360° LENS, REAR RJ-45 PORTS
	NCM PDT 9 R/B LOW VOLTAGE CEILING MOUNT SENSOR, PASSIVE DUAL TECHNOLOGY, SMALL MOTION / STANDARD RANGE 360° LENS, REAR RJ-45 PORTS
	NCM 10 R/B LOW VOLTAGE CEILING MOUNT SENSOR, LARGE MOTION / EXTENDED RANGE 360° LENS, REAR RJ-45 PORTS
	DP2-NPP16 D EPF-POWER/RELAY PACK, DIMMING, EXTERNAL FAULT
	NPODMA DX- WALL SWITCH, DIMMING, 3 BUTTON (ON/OFF, RAISE/LOWER), DIGITAL
	EXISTING ACUITY NIGHT ECLIPSE
	WSX SA (COLOR) WALL SWITCH DECORATOR SENSOR-PASSIVE INFRARED (PIR), W/ CONVERTIBLE NEUTRAL/NO NEUTRAL WIRING, SEMI AUTOMATIC
	S01 WSX XX WALL SWITCH SENSOR
	FIRE ALARM PULL STATION C/W LEXAN COVER & WITH A BATTERY BUZZER
	FLUSH WALL OR CEILING MOUNTED FIRE ALARM HORN
	FLUSH WALL OR CEILING MOUNTED FIRE ALARM HORN & STROBE
	AUTOMATIC RATE OF RISE HEAT DETECTOR AT 135° F
	AUTOMATIC FIXED TEMPERATURE HEAT DETECTOR AT 157° F
	PHOTOELECTRIC TYPE SMOKE DETECTOR UNLESS NOTED OTHERWISE
	DUCT TYPE SMOKE DETECTOR WITH REMOTE ANNUNCIATOR
	FIRE ALARM SYSTEM REMOTE ANNUNCIATOR
	FIRE ALARM CONTROL PANEL
	FIRE ALARM DATA GATHERING PANEL
	FIRE ALARM SYSTEM END OF LINE RESISTANCE
	FIRE ALARM SYSTEM CONNECTION
	FIRE ALARM STROBE
	DOOR HOLD OPEN DEVICE
	WIRE GUARD
	TYPICAL
	WEATHERPROOF
	EXIT SIGN
	EMERGENCY LIGHTING FIXTURE
	BATTERY UNIT
	EMERGENCY LIGHTING FIXTURE AND BATTERY
	WALL MOUNT PIR OCCUPANCY SENSOR, WATT STOPPER PW-100
	HAND DRYER
	CEILING MOUNTED SPEAKER
	WALL MOUNTED SPEAKER
	CEILING MOUNTED SPEAKER
	OUTLET FOR SECURITY CONCEALED DOOR CONTACT
	OUTLET FOR SECURITY HID CARD ACCESS READER
	RELOCATE
	EXISTING
	EXISTING TO REMAIN
	CLASSROOM CONTROL PANEL
	DOOR OPERATOR

SYMBOLS	MANUFACTURER CATALOGUE NO.	SURFACE RECESSED	MOUNTING CEILING SUSPENDED	ARROT WALL SURFACE RECESSED	BRACKET NUMBER	LAMP DATA	SUPPLY VOLT	REMARKS
A	PEERLESS - LACH-240-232-EL	●				2 32 FL	●	C/W SILVER REFLECTOR, HINGED K-23 LENS & 1-4 LAMP BALLAST
A1	PEERLESS - LACH-240-232-EL	●				2 32 FL	●	C/W SILVER REFLECTOR, HINGED K-23 LENS W/O BALLAST
A2	PEERLESS - LACH-240-232-EL	●				2 32 FL	●	C/W SILVER REFLECTOR, HINGED K-23 LENS & 1-2 LAMP BALLAST
B	PEERLESS - 4PLS-240-232-EL	●				2 32 FL	●	WITH 1-4 LAMP BALLAST
B1	PEERLESS - 4PLS-240-232-EL	●				2 32 FL	●	WITHOUT BALLAST
B2	PEERLESS - 4PLS-240-232-EL	●				2 32 FL	●	WITH 1-2 LAMP BALLAST
C	PEERLESS - LACH-140-132-EL	●				1 32 FL	●	C/W SILVER REFLECTION & HINGED K-23 LENS
D	PEERLESS - PEL-51-232-EL	●				2 32 FL	●	
E	PEERLESS - VR-232-EL	●				2 32 FL	●	
F	PEERLESS - LSG-4-232-EL	●				2 32 FL	●	
F1	PEERLESS - LSG-4-232-EL	●				2 32 FL	●	
F2	PEERLESS - LSG-3-232-EL	●				1 32 FL	●	
F3	PEERLESS - LSG-3-232-EL	●				1 25 FL	●	
G	PEERLESS - NIRA-4-232-EL	●				2 32 FL	●	
H	PEERLESS - CNB-4-232-EL	●				2 32 FL	●	
I	NOT USED							
J	LIGHTFOUR- 1141-11020H					2 13 CFL	●	OPAL LENS
K	LITHONIA- CP7A-AC					1 250P38	●	WITH HINGED WIRE GAURD
L	METALLUMEN- AW7J-C SERIES					1 250MH	●	
M	MAGNALUM- HML- 400-M					1 400MH	●	WITH WIRE GAURD & REMOTE BALLAST
O	NOT USED							
P	HUBELL - NRG-41358	●				1 100HPS	●	
Q	HUBELL - NRG-300 SERIES					1 70 HPS	●	WITH WIREGAURD
R	HUBELL - VS SERIES					1 100INC	●	
S	LUMITROL - 2LA750LAD	●				2 750INC	●	FRONT OF HOUSE W/MTO BRACKET & PRESET DIMMER
U	LITHONIA - CC1-175M					1 175MH	●	
U1	KURT VERSEN-581					1 175MH	●	

ASCENSION CATHOLIC ELEMENTARY SCHOOL							
EXISTING LIGHTING FIXTURE SCHEDULE			PROPOSED LIGHTING FIXTURE SCHEDULE				
TYPE	WATT	QTY.	TOTAL WATTS	TYPE	WATT	QTY.	TOTAL WATTS
A	32	106	3392	A	30	7	210
A1	32	97	3104	A1	30	86	2580
A2	32	3	96	D	177	23	4071
B	32	20	640	D1	59	13	767
B1	32	22	704	Q	40	13	520
B2	32	2	64	Q1	50	148	7400
C	32	57	1824	MA	28	11	308
D	32	49	1576	M1	22	2	44
E	32	24	768	D2	40	2	80
F	32	2	64				
F1	32	10	320				
F2	32						
F3	32						
G	32	2	64				
H	32	3	96				
J	13						
K	250	18	4500				
L	250						
M	400	15	3750				
P	100	2	200				
Q	70	11	770				
R	100						
S	750						
U	175	4	700				
U1	175	7	1225				
Savings	Qty	Watts				290	15856
			33.33%				31.47%

NOTE: THIS ENERGY TABLE IS FOR REFERENCE ONLY. CONTRACTOR HAS TO VERIFY THE EXACT QUANTITY OF LIGHTING FIXTURES FROM THE FLOOR PLAN

ELECTRICAL DRAWING LIST	
E1.0	ELECTRICAL LEAD SHEET & SCHEDULES
E1.1	ELECTRICAL EQUIPMENT SCHEDULES-2
E1.2	ELECTRICAL PANEL SCHEDULES
E1.3	EXISTING FIRE ALARM ZONING SCHEDULE
E1.4	LIGHTING CONTROL DETAILS
E2.0	DEMOLITION LIGHTING GROUND FLOOR PLAN
E2.1	DEMOLITION LIGHTING SECOND FLOOR PLAN
E2.2	DEMOLITION FIRE ALARM GROUND FLOOR PLAN
E2.3	DEMOLITION FIRE ALARM SECOND FLOOR PLAN
E2.4	DEMOLITION EXISTING EMERGENCY LIGHTINGS AND EXIT SIGNS GROUND FLOOR PLAN
E2.5	DEMOLITION EXISTING EMERGENCY LIGHTINGS AND EXIT SIGNS SECOND FLOOR PLAN
E2.6	DEMOLITION GROUND FLOOR WASHROOM POWER PLAN
E2.7	DEMOLITION SECOND FLOOR WASHROOM POWER PLAN
E3.0	PROPOSED LED LIGHTING RETROFIT GROUND FLOOR PLAN
E3.1	PROPOSED LED LIGHTING RETROFIT SECOND FLOOR PLAN
E3.2	PROPOSED FIRE ALARM GROUND FLOOR PLAN
E3.3	PROPOSED FIRE ALARM SECOND FLOOR PLAN
E3.4	PROPOSED EMERGENCY LIGHTINGS AND EXIT SIGNS GROUND FLOOR PLAN
E3.5	PROPOSED EMERGENCY LIGHTINGS AND EXIT SIGNS SECOND FLOOR PLAN
E3.6	PROPOSED GROUND AND SECOND FLOOR WASHROOM POWER PLAN

GENERAL NOTES

- ARRANGE A TRAINING SESSION WITH THE LIGHTING CONTROL MANUFACTURER AND BECOME FAMILIAR WITH THE INSTALLATION REIMBURSEMENTS OF THE DIGITAL LIGHTING CONTROL SYSTEM.
- THE DRAWINGS ARE NOT TO BE SCALED FOR INSTALLATION PURPOSES, ALL MEASUREMENTS ARE TO BE OBTAINED FROM FIELD MEASUREMENTS.
- CONTRACTOR IS TO REMOVE ALL EXISTING DEAD AND ABANDONED CONDUIT AND WIRING BACK TO SOURCE, WHERE NOT POSSIBLE TO REMOVE EXISTING CONDUIT, CONDUIT IS TO BE LEFT BEHIND AND EXISTING WIRE IS TO BE REMOVED AND REPLACED WITH A PULL ROPE.
- CONTRACTOR IS TO PROVIDE ELECTRONIC CAD "AS BUILT" DRAWINGS IN DWG AND PDF FORMAT AT THE COMPLETION OF THE PROJECT. CAD FILES ARE TO BE AUTOCAD 2004.
- UNLESS NOTED OTHERWISE ALL WIRING SHALL BE IN CONDUIT AND CONCEALED IN WALLS AND CEILING SPACES. BX IS PERMITTED IN SPECIAL CIRCUMSTANCES AND SHORT DROP FROM JUNCTION BOXES TO LIGHT FIXTURES, REFER TO SPECIFICATIONS. CONDUIT RUNS ARE TO BE PARALLEL TO WALL STUDS AND DROP FROM JUNCTION BOXES MOUNTED IN THE CEILING SPACE.
- UNLESS SPECIFICALLY NOTED AS "CABLING BY OTHERS", THE CONTRACTOR SHALL INCLUDE AS ALL CABLING TO DEVICES ETC AS SHOWN FOR A COMPLETE AND FUNCTIONING SYSTEM(S).
- CONTRACTOR IS TO MAINTAIN POWER AND COMMUNICATION CIRCUITS IN AREAS OUTSIDE OF THE CONSTRUCTION AREA. PROVIDE TEMPORARY CONNECTIONS AS REQUIRED, COORDINATE WITH OWNER.
- REFER TO CLASSROOM LIGHTING CONTROL DIAGRAM IN ELECTRICAL DETAILS FOR CLASSROOM LIGHTING CONTROL REQUIREMENTS. PROVIDE AND INSTALL ALL DEVICES AND CO-ORDINATE WITH MANUFACTURER FOR REQUIREMENTS.
- ELECTRICAL CONTRACTOR TO ALLOW FOR PROVIDING AND INSTALLING CHAIN SUPPORT FOR THE LIGHTING FIXTURES.
- RESERVED.
- ALL ELECTRICAL WIRING TO BE RUN IN EMT CONDUITS.
- FREE AIR LOW VOLTAGE WIRES ARE ONLY ACCEPTABLE IN CONCEALED CEILING SPACES. ALL EXPOSED LOW VOLTAGE WIRES TO BE INSTALLED IN EMT CONDUITS.
- ALL CONDUITS INSTALLED TO BE PAINTED TO MATCH EXISTING BACKGROUND COLOR SCHEME.
- ALL EXISTING SWITCHES IN THE CORRIDORS, STAIRCASES, CHANGE ROOMS AND WASH ROOMS TO BE REMOVED AND STAINLESS STEEL PLATES TO BE INSTALLED TO COVER THE REMOVED SWITCHES.
- CONTRACTOR SHALL INSTALL NEW LED LIGHTING FIXTURES, CONTROLS & FIRE RATED BOX AT THE SAME TIME TO COMPLETE INSTALLATION.
- CONTRACTOR SHALL PUT BACK ALL THE CEILING TILES REMOVED TO PERFORM THE LED RETROFIT WORK EVERYDAY SO AS NOT TO LEAVE ANY ROOM WITH OPEN CEILING TILES.
- IT IS MANDATORY FOR THE GC TO BE PRESENT AT SITE WHENEVER WORK IS DONE AT SITE.

LIGHTING CONTROL SYSTEM NOTES:

- LOCATE ROOM CONTROLLER IN ACCESSIBLE CEILING. CONFIRM EXACT LOCATION ON SITE. PROVIDE 120V POWER SUPPLY AS NOTED FROM A NEAREST PANEL.
- THE ACUITY BUS WIRING SHALL BE CAT 5/6, ENSURING INTEGRATION BETWEEN ACUITY AND INTERIOR LIGHTING CONTROLS.
- RESERVED.
- RESERVED.
- RESERVED.
- RESERVED.
- RESERVED.
- CAT 5/6 SHALL BE DAISY CHAINED FROM CONTROLLER TO CONTROLLER. T TAPPING AND STAR WIRING TOPOLOGY WILL NOT BE ALLOWED. DAISY-CHANNING NETWORK BRIDGES TOGETHER TO BE PER ACUITY SPECIFICATIONS.
- ACUITY n/O NEEDED FOR ALARM PANEL INTEGRATION (1 EACH FOR FIRE AND BURGLAR ALARM-ALTHOUGH TYPICALLY WE ONLY USUALLY DO FIRE). COORDINATE WORK WITH PASSWORD PROTECTION.
- RESERVED.

NEW LIGHTING FIXTURES IN DRYWALL CEILING

CONTRACTOR TO REMOVE EXISTING FIXTURES FROM THE DRY WALL CEILINGS AND ALSO TO REMOVE THE EXISTING FIXTURE DRY WALL FRAME, GC TO ALLOW FOR PATCHING THE EXISTING DRYWALL CEILING.
ONCE THE DRY WALL CEILING IS DRY, CUT A NEW OPENING IN THE DRYWALL CEILING, INSTALL THE NEW LIGHTING FIXTURE WITH THE NEW DRY WALL FRAME THAT COMES WITH THE NEW LIGHTING FIXTURE. GC TO ALLOW FOR ALL CUTTING, PATCHING AND PAINTING OF DRYWALL CEILINGS.

GENERAL CONTRACTOR TO ALLOW FOR PROVIDING AND INSTALLING THE FOLLOWING ACCESS PANELS IN THE DRY WALL CEILING.
12" x 12" - 6 EACH
24" x 24" - 6 EACH
LOCATION OF THE ACCESS PANEL WILL BE DETERMINED ON SITE DURING CONSTRUCTION.

WARRANTY LETTER

- LIGHTING MANUFACTURER TO PROVIDE A SEPARATE WARRANTY LETTER ADDRESSED TO THE SCHOOL BOARD WITH PROJECT DETAILS AND ALSO INDICATING THE START DATE AND END DATE OF WARRANTY FOR THE LED LIGHTING FIXTURES.
- WARRANTY LETTER SHALL ALSO INDICATE ALL THE NEW LED LIGHTING FIXTURE TYPES INSTALLED AT THE SCHOOL.

PROPOSED LIGHTING FIXTURE SCHEDULE											
TYPE	DESCRIPTION	LAMP/FIXTURE MAKE/MODEL	VOLT	LUMENS	LAMP			MOUNT	REMARKS	DLC PRODUCT ID #	
					WATT	WPS	DGC				
A	1'X4' RECESSED FIXTURE	LITELINE LEDP-14-WH-L EQUALS: PEERLESS-ELECTRIC AND LITHONIA	UNV	3190	30	LED	4000	DRYWALL CEILING RECESSED	CORRIDOR, STAIR, STAFF ROOM	PGM484HQ	
A1	1'X4' SURFACE MOUNTED FIXTURE	LITELINE LEDP-14-WH-L EQUALS: PEERLESS-ELECTRIC AND LITHONIA	UNV	3190	30	LED	4000	SURFACE MOUNTED	WASH/CHANGE ROOM DLC CERTIFIED	PGM484HQ	
D	4' PREMIUM-GRADE HIGH BAY LUMINAIRE, COME WITH WIRE GUARD	VISIONEERING LHB048-LED840K180L120-W1 EQUALS: PEERLESS-ELECTRIC, LITHONIA AND PHILIPS	UNV	18000	177	LED	4000	SURFACE MOUNTED	GYM DLC CERTIFIED	PAG562KR	
D1	24",36",48" RING LED FIXTURE	G LIGHTING CTRIC: 24", 36",48" EQUALS: ALCON LIGHTING RING PENDANT, LUMENWERX T060	UNV	4000	40	LED	4000	CEILING SUSPENDED	STAGE DLC CERTIFIED		
D2	18",24",30" GLOBE LED FIXTURE	G LIGHTING GLOBE: 18",24",30" EQUALS: ALCON LIGHTINGGLOBE PENDANT 10",12",14", VISA LIGHTING ZUME IN 12",16",22"	UNV	1750	40	LED	4000	CEILING SUSPENDED	STAGE-LOBBY DLC CERTIFIED		
D3	10" CYLINDER LED FIXTURE	CURRENT MOTILED-9-4L-40K-8-120-WW-25-WH EQUALS: PEERLESS-ELECTRIC,LITHONIA AND PHILIPS	UNV	4000	40	LED	4000	CEILING SUSPENDED	STAGE DLC CERTIFIED		
J	6" LED POT LIGHT, 1500 LUMEN, WET LOCATIONS	PRESCOLITE LFR-6RD-M-15L-40K9-WD-DM1/LFR-6RD-T-S EQUIVALENT BY PEERLESS, METALLUMEN OR PHILIPS	UNV	1500	11.4	LED	4000	CANOPY CEILING RECESSED			
M	4' CHAIN SUSPENDED STRIP FIXTURE WITH WIRE GUARD	VISIONEERING LCOM48-LED840K030L120-P77-W5	UNV	3103	22	LED	4000	CEILING SUSPENDED	CUSTODIAN /STORAGE DLC CERTIFIED	PGM7ADYJ	
M1	4' COMMERCIAL GRADE LED STRIP FIXTURE WITH WIRE GUARD	VISIONEERING LCOM48-LED840K030L120-P77-W5	UNV	3103	22	LED	4000	SURFACE MOUNTED	MECHANICAL/ELEC. ROOM DLC CERTIFIED	PGM7ADYJ	
Q1	2'X4' RECESSED FIXTURE	LITELINE LEDP-24-WH-L EQUALS: PEERLESS-ELECTRIC AND PEERLESS-ELECTRIC	UNV	6580	50	LED	4000	DRYWALL CEILING RECESSED	OFFICES, CLASSROOMS DLC CERTIFIED	PE2EP3S9	
MA	LED FULL CUT OFF WALL PACK, DIE CAST ALUMINUM HOUSING AND DOOR	EXO LMC2-48L35-SK7-3-UNV EQUIVALENT BY COOPER, CANLYTE OR GE	UNV	2607	35	LED	4000	WALL MOUNTED	DLC CERTIFIED		
S	4' LED WALL MOUNTED	VISIONEERING LELW48-LED840K20LUNV-XX EQUALS: PEERLESS-ELECTRIC, LITHONIA AND GE	UNV	2000	19	LED	4000	STAIRS WALL MOUNTED		P9GBJUH	
J1	6" LED POT LIGHT, 1500 LUMEN	PRESCOLITE LFR-6RD-M-15L-40K9-WD-DM1/LFR-6RD-T-S EQUIVALENT BY PEERLESS, METALLUMEN OR PHILIPS	UNV	1500	11.4	LED	4000	CEILING RECESSED	NEW CATHOLIC DISPLAY		
A2	1'X4' EDGE RECESSED FIXTURE	LITELINE EDGE-14-WH-EDGE 1'X4 40KWH 120V 20-40W EQUALS: PEERLESS-ELECTRIC AND LITHONIA	UNV	4200	30	LED	4000	CEILING RECESSED	STAIR		
EX	EXISTING FIXTURES TO BE REMOVED.										
EX-R	EXISTING FIXTURES NOT TO BE REPLACED. RE-LAMPING.										

NOTES

- ELECTRICAL CONTRACTOR TO CARRY LIGHTING FIXTURES FOR ALL VOLTAGES, NO EXTRA WILL BE ENTERTAINED FOR THE CHANGE IN VOLTAGE.
- CONTRACTOR TO CHECK THE VOLTAGE ON SITE BEFORE ORDERING LIGHTING FIXTURES.
- ELECTRICAL CONTRACTOR ALSO TO ALLOW FOR PROVIDING 120V POWER TO THE LIGHTING CONTROLLERS FROM THE NEAREST ELECTRICAL PANEL.
- ALL NEW SUSPENDED FIXTURES TO BE AT THE SAME ELEVATION AS THE EXISTING.
- THE NETWORK DROP TO THE EXISTING ACUITY PANEL IS ALREADY INSTALLED AND FULLY OPERATIONAL.
- BESIDES EVERY PANEL AND LIGHTING CONTROL RELAY, CONTRACTOR TO PROVIDE LAMADOD ATTACHED TO THE T BAR OR DRY WALL CEILING. GIVE NUMBERS IN SEQUENCE.
- THE ELECTRICAL CONTRACTOR SHALL NOT REMOVE RELAYS FOR BAS CONTROL OF EXTERIOR LIGHTS. KEEP AS-IS.
- ELECTRICAL CONTRACTOR SHALL PROVIDE AND INSTALL LEGRAND 500/700 SERIES SMALL RACEWAY/BACK BOXES TO INSTALL THE CAT 5E LOW VOLTAGE CABLE IN CLASSROOMS/OFFICES/GYM WHERE ADDITIONAL LOW VOLTAGE SWITCHES ARE SHOWN.
- ALL EXPOSED ELECTRICAL CONDUIT SHALL BE PAINTED TO MATCH EXISTING COLOR.

NETWORK CABLE

- MS/TP WIRING NOT REQUIRED FOR THIS PROJECT.

The Contractor shall verify all dimensions prior to commencement of the work. All print and specifications are the property of the Architect and must be returned upon completion of the work.

ISSUE OR REVISION

No.	Description	Date
1	ISSUED FOR REVIEW	FEB 18, 2025
2	ISSUED FOR TENDER	MAR 13, 2025
3	ISSUED FOR ADDENDUM E-1	MAR 20, 2025
4	ISSUED FOR ADDENDUM E-2	APR 01, 2025

ASCENSION CES RENOVATION PROJECT

The Contractor shall verify all dimensions prior to commencement of the work. All print and specifications are the property of the Architect and must be returned upon completion of the work.

ISSUE OR REVISION		
No.	Description	Date
1	ISSUED FOR REVIEW	FEB 18, 2025
2	ISSUED FOR TENDER	MAR 13, 2025
3	ISSUED FOR ADDENDUM E-1	MAR 20, 2025
4	ISSUED FOR ADDENDUM E-2	APR 01, 2025

PROJECT:
ASCENSION CES RENOVATION PROJECT

5205 New Street,
Burlington, Ontario, L7L 1V3
HALTON CATHOLIC DISTRICT SCHOOL BOARD



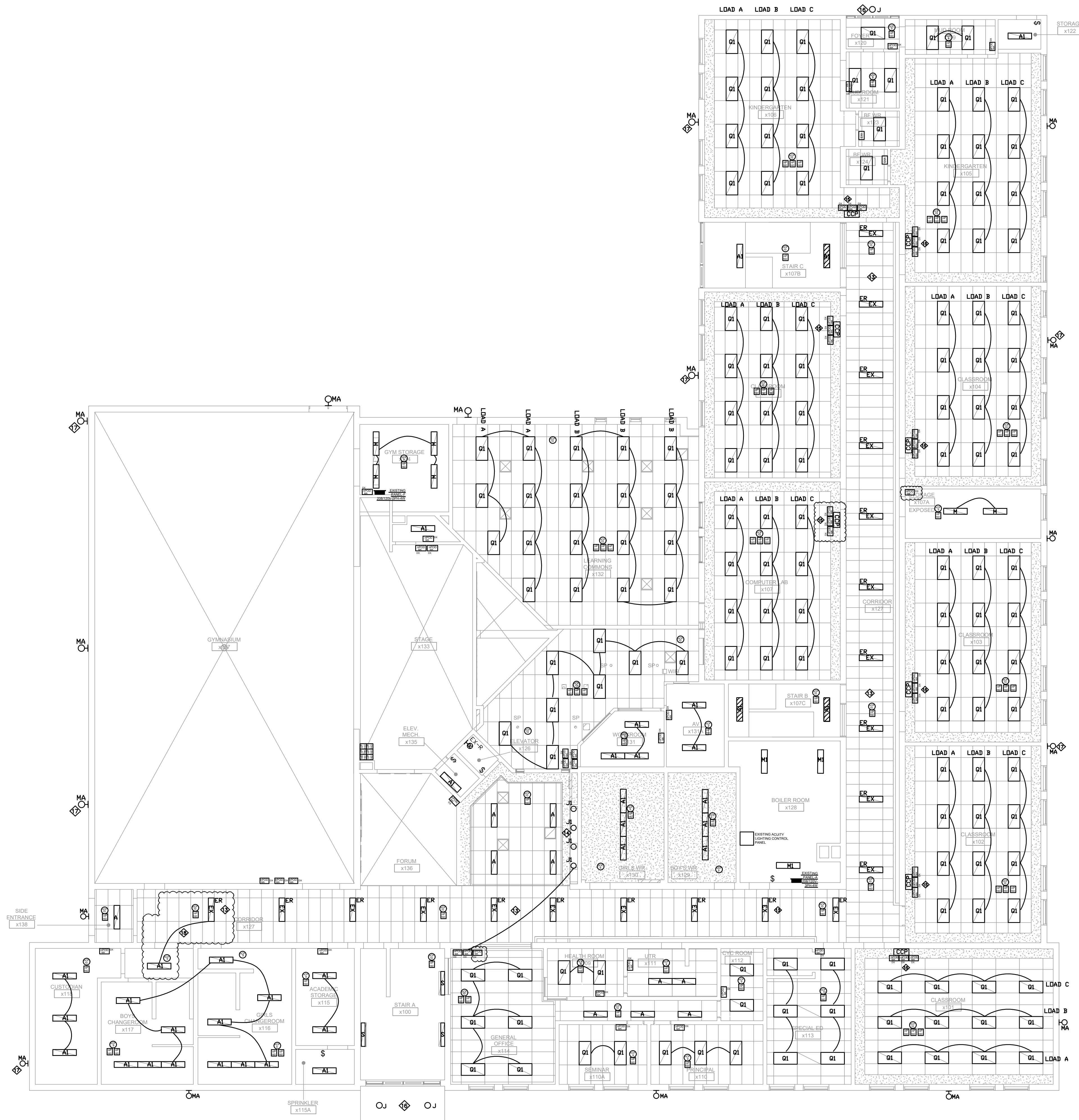
DWG TITLE:
PROPOSED LED LIGHTING RETROFIT GROUND FLOOR PLAN



REGAL CONSULTING ENGINEERS INC.
CONSULTING MECHANICAL & ELECTRICAL ENGINEERS
208 Wycroft Road, Suite 200, Oakville, Ontario L6K 3S3
PHONE: (905) 844-3913
www.regal-eng.com

DATE:	FEBRUARY 2025
SCALE:	1:110
DRAWN BY:	AS
CHECKED BY:	MA
DWG STATUS:	TENDER
PROJECT No.:	2025-476
DRAWING No.:	E3.0 -A-2
REVISION:	

April 1, 2025 9:07:54 AM



- NOTES:**
- RE-UTILIZE EXISTING LIGHTING CIRCUITS UNLESS NOTED OTHERWISE. ELECTRICAL CONTRACTOR TO VERIFY CAPACITY OF EXISTING LIGHTING CIRCUIT PRIOR TO INSTALLATION. PROVIDE NEW SWITCHING LEGS AS INDICATED.
 - RESERVED.
 - RESERVED.
 - ACUITY OCCUPANCY SENSORS ARE DUAL TECHNOLOGY: PIR AND MICROPHONICS NOT ULTRASONICS.
 - ELECTRICAL CONTRACTOR TO PROVIDE AND INSTALL NEW 20A BREAKER IN EXISTING ELECTRICAL PANEL AS SHOWN. EXTEND POWER INTO THE CEILING SPACE FOR DIGITAL LIGHTING CONTROL SYSTEM. ALL LOW VOLTAGE TRANSFORMERS REQUIRED FOR DIGITAL LIGHTING CONTROL SYSTEM TO BE PROVIDED AND INSTALLED.
 - ELECTRICAL CONTRACTOR TO CO-ORDINATE WITH GC FOR THE SUPPLY AND INSTALLATION OF CEILING TILES IN PLACE WHERE THE LIGHTING FIXTURES ARE REMOVED. GC TO ALLOW FOR PROVIDING ACOUSTIC CEILING TILES AS REQUIRED. ACCEPTABLE ACOUSTIC CEILING TILE IS ARMSTRONG FINE FISSURED "SQ LAY IN FIRMGUARD HUMIGUARD PLUS BP 1830" NO ALTERNATE ALLOWED.
 - CONTRACTOR TO ALLOW FOR SCISSOR LIFT OR ANY OTHER APPLICABLE LIFT TO WORK AT THE FIXTURE AT HIGHER ELEVATIONS. ELECTRICIANS WORKING AT HEIGHT TO BE CERTIFIED "WORKING AT HEIGHTS" AND TO HAVE ALL THE APPROVED EQUIPMENT.
ELECTRICAL CONTRACTOR TO ALLOW FOR BUILDING OF RAMPS ETC IN ORDER TO BRING THE POWER LIFT ETC INSIDE THE SCHOOL PREMISES. NO EXTRA WILL BE ENTERTAINED FOR TEMPORARY RAMPS THAT MAY REQUIRED TO BRING HEAVY LIFT EQUIPMENT.
 - ELECTRICAL CONTRACTOR TO ALLOW FOR DISCONNECTING THE OLD FIXTURE AND CONNECT THE NEW LIGHTING FIXTURE WITH EXISTING CIRCUIT AND SWITCH.
 - OCCUPANCY SENSORS IN GYM AND WORKSHOPS TO COME WITH WIRE GUARDS.
 - ELECTRICAL CONTRACTOR TO INSTALL LIGHTING CONTROLLER RELAYS ETC. FOR THE NEW LIGHTING FIXTURES OF THE GYM IN THE CEILING SPACE OF THE STORAGE ROOM AS SHOWN ON THE FLOOR PLAN.
 - AS ELECTRICAL POWER AND LOW VOLTAGE CABLE FOR THE NEW LED LIGHTINGS SWITCHES CANNOT BE RUN IN THE SAME EXISTING ELECTRICAL CONDUIT, THE ELECTRICAL CONTRACTOR SHALL ALLOW TO PROVIDE AND INSTALL WIREMOLD FOR THE NEW LOW VOLTAGE SWITCHES.
 - ELECTRICAL CONTRACTOR TO ALLOW FOR CONNECTING THE NEW LIGHTING FIXTURES TO EXISTING CIRCUIT WITH ALL REQUIRED LIGHTING CONTROLLER RELAYS ETS.
 - EXISTING LED LIGHTING FIXTURES IN CORRIDOR TO REMAIN. CONNECT TO THE NEW LIGHTING CONTROL SYSTEMS. CORRIDORS TO INSTALL DIMMING WITH EXISTING LED FIXTURES AND CHANGE TEMPERATURE TO 4000K.
 - ELECTRICAL CONTRACTOR TO PROVIDE NEW LIGHTING FIXTURES FOR NEW CATHOLIC DISPLAY FEATURE WALL REFER TO THE ARCHITECTURAL DETAILS.
 - ELECTRICAL CONTRACTOR TO PROVIDE CLASSROOM CONTROL PANEL'S SWITCH PLATE TO SUIT LIGHTING CONTROL BUTTON STATION(S) AND AND OTHER EXISTING CLASSROOM CONTROL PANEL DEVICES.
 - AT THIS LOCATION THE EXISTING CANOPY FIXTURE IS TO BE DISCONNECT AND REMOVED. MAINTAIN CIRCUIT FOR RECONNECTION TO NEW FIXTURE.
 - ELECTRICAL CONTRACTOR TO PROVIDE AND INSTALL NEW WALL PACK LIGHTING FIXTURE AS SHOWN. CONNECT NEW LIGHTING FIXTURE TO THE EXISTING CIRCUITS. ALLOW FOR EXTENDING CABLES AND CONDUITS.
 - THE ELECTRICAL CONTRACTOR SHALL ZONE THE A1 FIXTURE LOCATED OUTSIDE THE BOY'S CHANGE ROOM WITH THE HALLWAY LIGHTING, NOT THE CHANGE ROOMS. VERIFY IF IT IS CURRENTLY FUNCTIONING AS A NIGHTLIGHT AND ADJUST AS REQUIRED.

CUTTING, PATCHING AND PAINTING BY GC

- CUTTING AND PATCHING OF THE DRYWALL BY THE GC IS INCLUDED IN THE SCOPE OF WORK. GC TO CAREFULLY EXAMINE ALL THE LIGHTING FLOOR PLAN TO ALLOW FOR COMPLETE CUTTING PATCHING AND PAINTING WORK. FOR THE LIGHTING RETROFIT SCOPE.

The Contractor shall verify all dimensions prior to commencement of the work. All print and specifications are the property of the Architect and must be returned upon completion of the work.

ISSUE OR REVISION

No.	Description	Date
1	ISSUED FOR REVIEW	FEB 18, 2025
2	ISSUED FOR TENDER	MAR 13, 2025
3	ISSUED FOR ADDENDUM E-1	MAR 20, 2025
4	ISSUED FOR ADDENDUM E-2	APR 01, 2025

PROJECT: ASCENSION CES RENOVATION PROJECT

5205 New Street,
Burlington, Ontario, L7L 1V3
HALTON CATHOLIC DISTRICT SCHOOL BOARD

PROFESSIONAL SEAL:



DWG TITLE: PROPOSED LED LIGHTING RETROFIT SECOND FLOOR PLAN



REGAL CONSULTING ENGINEERS INC.
CONSULTING MECHANICAL & ELECTRICAL ENGINEERS
208 Wycroft Road, Suite 200, Oakville, Ontario L6K 3S3
PHONE: (905) 844-3913
www.regal-eng.com

DATE: FEBRUARY 2025

SCALE: 1:100

DRAWN BY: AS

CHECKED BY: MA

DWG STATUS: TENDER

PROJECT No.: 2025-476

DRAWING No.: E3.1-A-2

April 1, 2025 9:11:02 AM

- NOTES:**
- RE-UTILIZE EXISTING LIGHTING CIRCUITS UNLESS NOTED OTHERWISE. ELECTRICAL CONTRACTOR TO VERIFY CAPACITY OF EXISTING LIGHTING CIRCUIT PRIOR TO INSTALLATION. PROVIDE NEW SWITCHING LEGS AS INDICATED.
 - RESERVED.
 - ACUITY OCCUPANCY SENSORS ARE DUAL TECHNOLOGY: PIR AND MICROPHONICS NOT ULTRASONICS.
 - ELECTRICAL CONTRACTOR TO PROVIDE AND INSTALL NEW 20A BREAKER IN EXISTING ELECTRICAL PANEL AS SHOWN. EXTEND POWER INTO THE CEILING SPACE FOR DIGITAL LIGHTING CONTROL SYSTEM. ALL LOW VOLTAGE TRANSFORMERS REQUIRED FOR DIGITAL LIGHTING CONTROL SYSTEM TO BE PROVIDED AND INSTALLED.
 - ELECTRICAL CONTRACTOR TO CO-ORDINATE WITH GC FOR THE SUPPLY AND INSTALLATION OF CEILING TILES IN PLACE WHERE THE LIGHTING FIXTURES ARE REMOVED. GC TO ALLOW FOR PROVIDING ACOUSTIC CEILING TILES AS REQUIRED. ACCEPTABLE ACOUSTIC CEILING TILE IS ARMSTRONG FINE FISSURED "SQ LAY IN FIRMGUARD HUMIGUARD PLUS BP 1830" NO ALTERNATE ALLOWED.
 - CONTRACTOR TO ALLOW FOR SCISSOR LIFT OR ANY OTHER APPLICABLE LIFT TO WORK AT THE FIXTURE AT HIGHER ELEVATIONS. ELECTRICIANS WORKING AT HEIGHT TO BE CERTIFIED "WORKING AT HEIGHTS" AND TO HAVE ALL THE APPROVED EQUIPMENT. ELECTRICAL CONTRACTOR TO ALLOW FOR BUILDING OF RAMPS ETC IN ORDER TO BRING THE POWER LIFT ETC INSIDE THE SCHOOL PREMISES. NO EXTRA WILL BE ENTERTAINED FOR TEMPORARY RAMPS THAT MAY REQUIRED TO BRING HEAVY LIFT EQUIPMENT.
 - ELECTRICAL CONTRACTOR TO ALLOW FOR DISCONNECTING THE OLD FIXTURE AND CONNECT THE NEW LIGHTING FIXTURE WITH EXISTING CIRCUIT AND SWITCH.
 - OCCUPANCY SENSORS IN GYM AND WORKSHOPS TO COME WITH WIRE GUARDS.
 - ELECTRICAL CONTRACTOR TO INSTALL LIGHTING CONTROLLER RELAYS ETC. FOR THE NEW LIGHTING FIXTURES OF THE GYM IN THE CEILING SPACE OF THE STORAGE ROOM AS SHOWN ON THE FLOOR PLAN.
 - AS ELECTRICAL POWER AND LOW VOLTAGE CABLE FOR THE NEW LED LIGHTINGS SWITCHES CANNOT BE RUN IN THE SAME EXISTING ELECTRICAL CONDUIT, THE ELECTRICAL CONTRACTOR SHALL ALLOW TO PROVIDE AND INSTALL WIREMOLD FOR THE NEW LOW VOLTAGE SWITCHES.
 - ELECTRICAL CONTRACTOR TO ALLOW FOR CONNECTING THE NEW LIGHTING FIXTURES TO EXISTING CIRCUIT WITH ALL REQUIRED LIGHTING CONTROLLER RELAYS ETS.
 - EXISTING LED LIGHTING FIXTURES IN CORRIDOR TO REMAIN CONNECT TO THE NEW LIGHTING CONTROL SYSTEMS. CORRIDORS TO INSTALL DIMMING WITH EXISTING LED FIXTURES AND CHANGE TEMPERATURE TO 4000K.
 - ELECTRICAL CONTRACTOR TO PROVIDE CLASSROOM CONTROL PANEL'S SWITCH PLATE TO SUIT LIGHTING CONTROL BUTTON STATION(S) AND AND OTHER EXISTING CLASSROOM CONTROL PANEL DEVICES.
 - ELECTRICAL CONTRACTOR TO PROVIDE AND INSTALL NEW LIGHTING FIXTURE AS REQUIRED NEW LAP CEILING RENOVATION AT STAIR A. CONNECT TO THE EXISTING CIRCUITS AND ALLOW EXTENDING CABLE AND CONDUITS.
 - IN THIS AREA AS NOTED, EXISTING BULKHEAD TO BE DEMOLISHED. THE NEW GYPSUM CEILING TO MATCH THE EXISTING BULKHEAD HEIGHT AND DEMOLISH THE BULKHEAD.
 - THE ELECTRICAL CONTRACTOR SHALL ZONE THE A1 FIXTURE LOCATED OUTSIDE THE BOY'S CHANGE ROOM WITH THE HALLWAY LIGHTING, NOT THE CHANGE ROOMS. VERIFY IF IT IS CURRENTLY FUNCTIONING AS A NIGHTLIGHT AND ADJUST AS REQUIRED.
 - CHANDELIER LIGHTING SHALL BE ON A SEPARATE CIRCUIT LED. ALLOW FOR PROVIDING AND INSTALLING A POWER PACK.
- CUTTING, PATCHING AND PAINTING BY GC**
- CUTTING AND PATCHING OF THE DRYWALL BY THE GC IS INCLUDED IN THE SCOPE OF WORK. GC TO CAREFULLY EXAMINE ALL THE LIGHTING FLOOR PLAN TO ALLOW FOR COMPLETE CUTTING PATCHING AND PAINTING WORK. FOR THE LIGHTING RETROFIT SCOPE.

