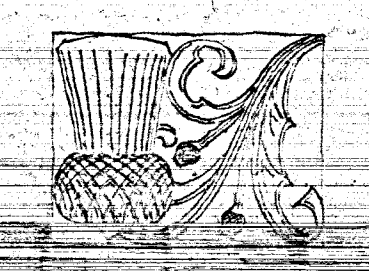
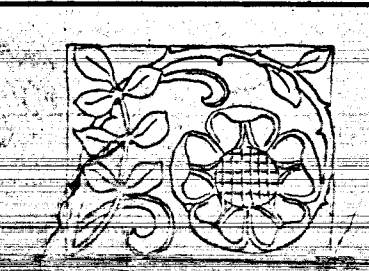


~ FOOTING & BASEMENT PLAN ~

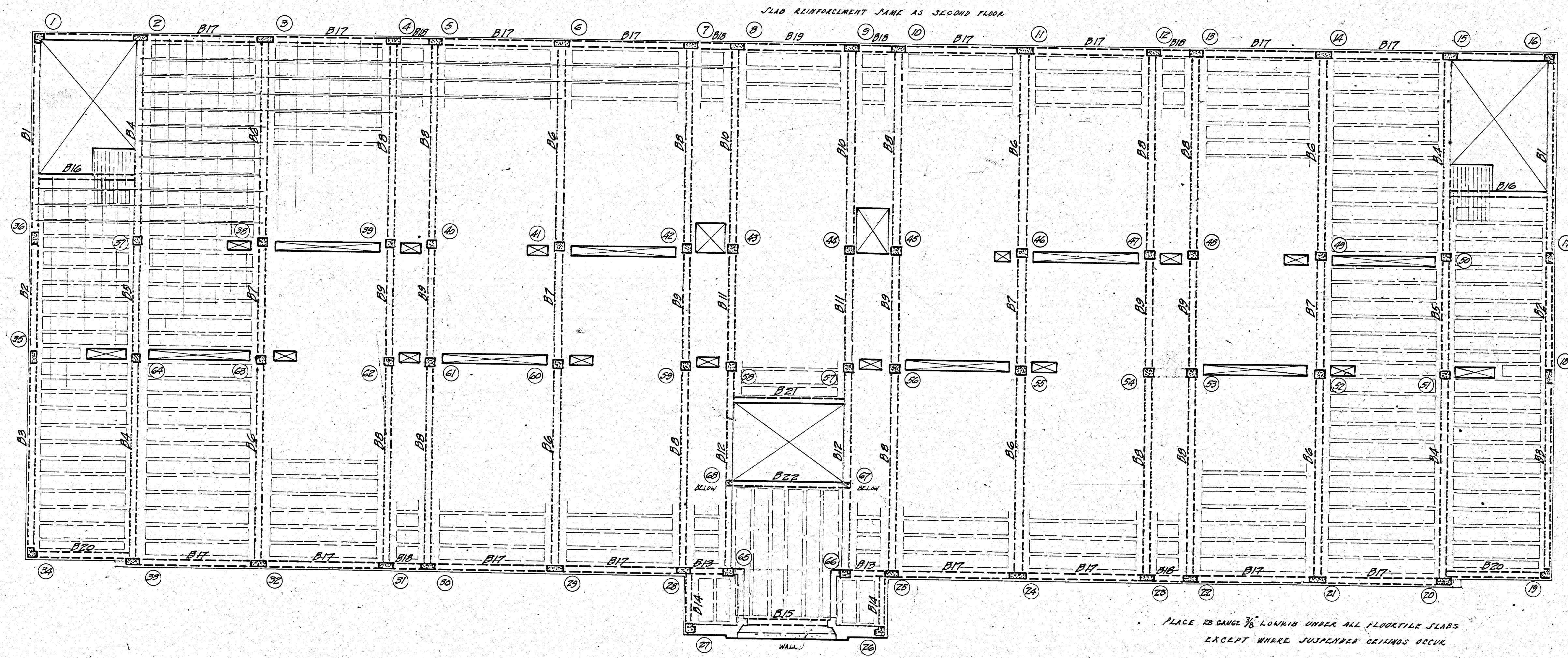
SCALE 3/8" = 1' FOOT
APRIL 1923



PLANS OF A SCHOOL BUILDING
ON CENTRE ST. FOR
BOARD OF EDUCATION AT OSWEGO



H. C. ARCHER
H. A. ARCHER



— FIRST FLOOR FRAMING PLAN —

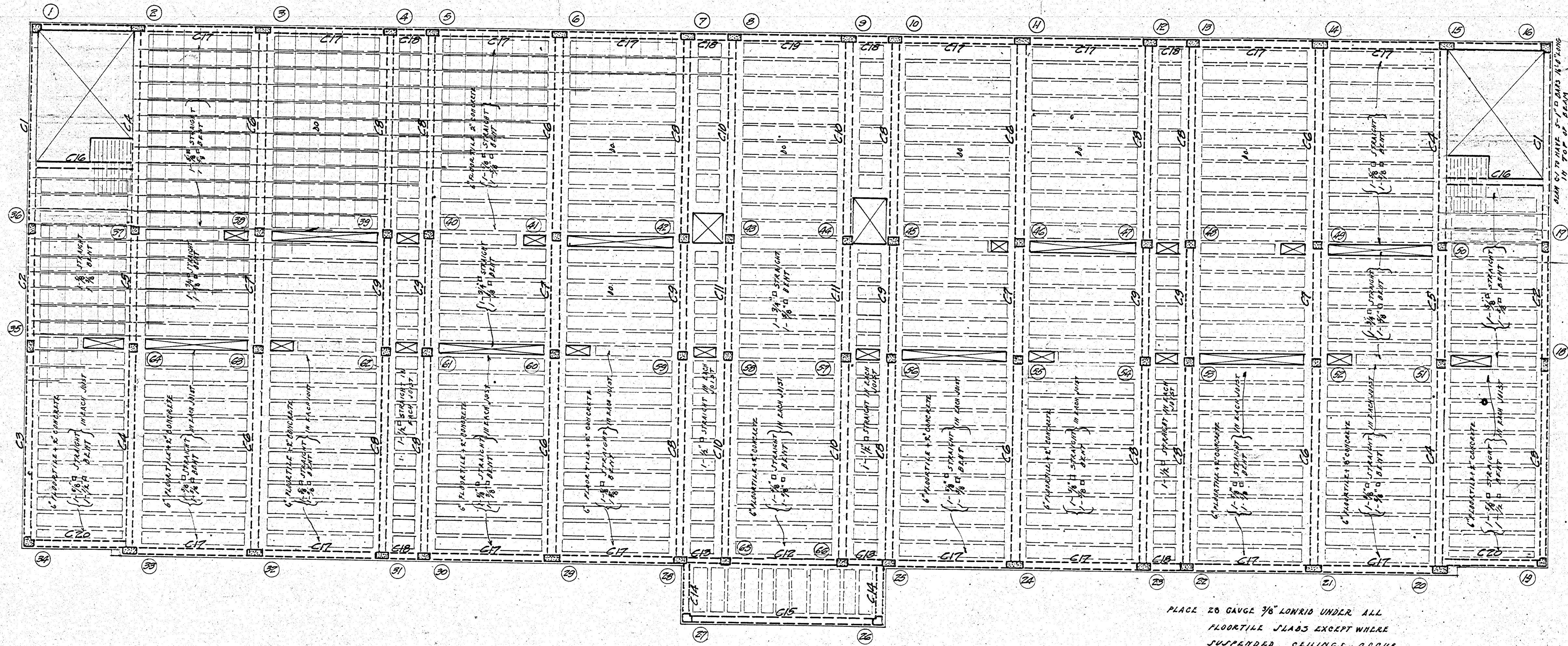
PLACE 25 GAUGE 3/8" LUMBER UNDER ALL FLOORTILE SLABS EXCEPT WHERE SUSPENDED CEILING OCCUR.
SEE SECOND FLOOR SHEET FOR BALANCE OF NOTES

SCALE - 1/8" IN = 1 FOOT
APRIL 1923

PLANS OF REINFORCED CONCRETE
FOR SCHOOL ON CENTER STREET
OSHAWA ONT.

HUTTON AND MOUTER
ARCHITECTS AND ENGINEERS
HAMILTON ONTARIO

SHEET NO.



— SECOND FLOOR FRAMING PLAN —

PLACE 20 GAUGE 7/8\"/>

PLACE 3/8\"/>

ALL JOISTS TO BE 4\"/>

ALL JOISTS UNDER PARTITIONS AT SIDES OF CORRIDORS TO BE 6\"/>

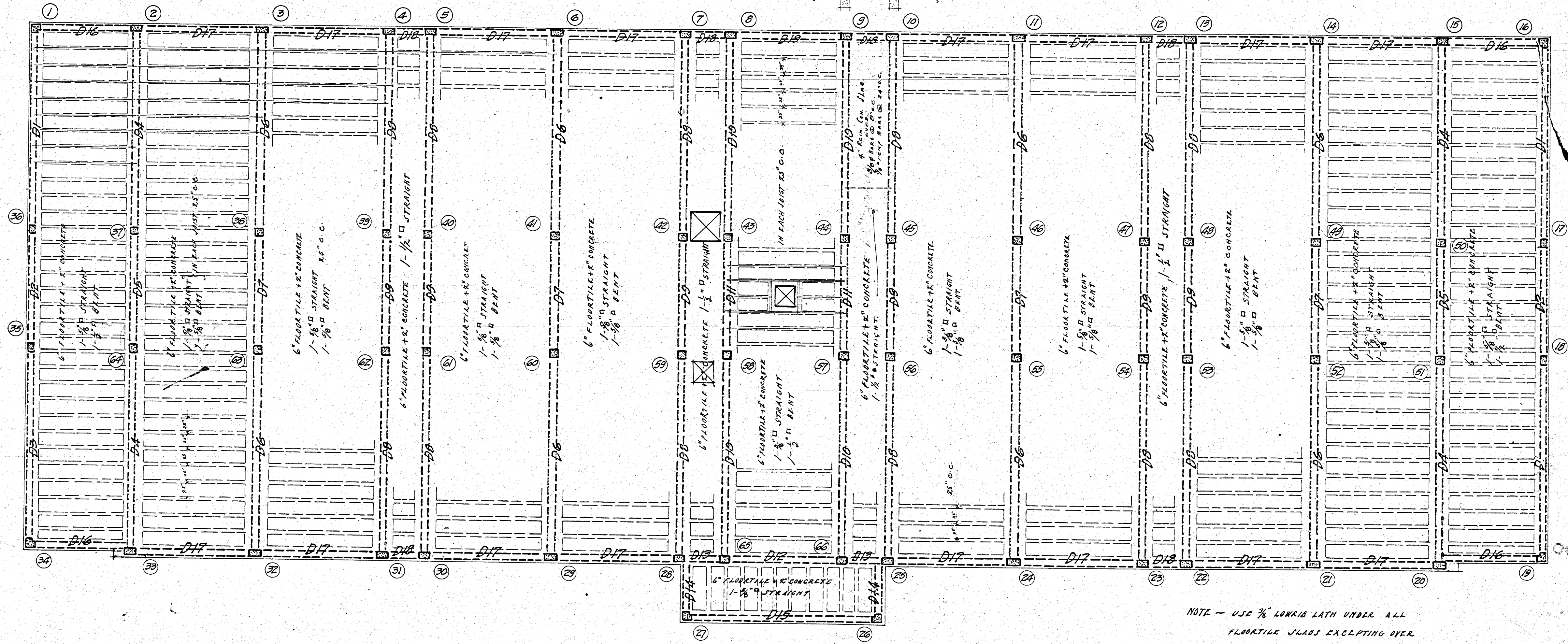
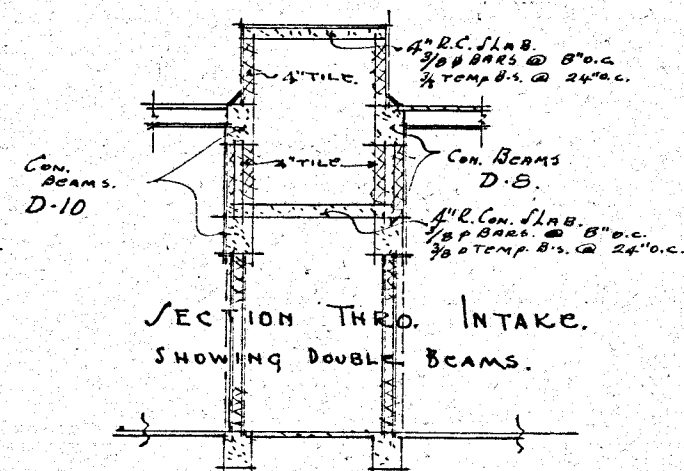
SCALE — 3/8\"/>

APRIL 1923

CENTER ST SCHOOL OSHAWA

HUTTON AND SOUTER ARCHITECTS AND ENGINEERS

SHEET NO. 2



ROOF FRAMING PLAN

NOTE - USE $\frac{3}{8}$ " LONG LATH UNDER ALL FLOOR TILE JOISTS EXCEPTING OVER CORRIDOR WHERE SUSPENDED CEILINGS OCCUR.

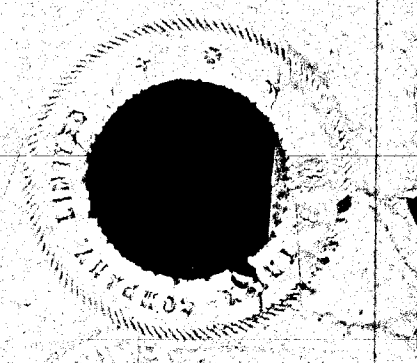
PLACE $\frac{3}{8}$ " ROUND TEMPERATURE RODS 24" ON CENTERS AT RIGHT ANGLES TO JOISTS.

SCALE - $\frac{1}{8}$ " IN = 1 FOOT

APRIL 1923

CENTER ST SCHOOL OSHA

HUTTON AND SOUTER ARCHITECTS ENGINEERS SHEET NO. 3



COLUMN SCHEDULE

COLUMN MARK	NO.	SUPPORTING ROOF	SUPPORTING 2 ND FLOOR	SUPPORTING 1 ST FLOOR	SUPPORTING GROUND FLOOR	FOOTING & CAP
1.	1.	10' x 10" 8-# BARS 12" O.C.	10' x 10" 8-# BARS 12" O.C.	10' x 10" 8-# BARS 12" O.C.	10' x 10" 8-# BARS 12" O.C.	4'-6" x 4'-6" x 1'-0" 10-# BARS 8-# DOWELS 3'-0" LONG
2.	1.	10' x 14" 4-# BARS 12" O.C.	10' x 16" 4-# BARS 12" O.C.	10' x 22" 4-# BARS 12" O.C.	12' x 22" 4-# BARS 12" O.C.	5'-3" x 5'-5" x 1'-5" 14-# BARS 4-# DOWELS 3'-0" LONG
3, 6.	2.	10' x 14" 4-# BARS 12" O.C.	10' x 16" 4-# BARS 12" O.C.	10' x 24" 4-# BARS 12" O.C.	14' x 24" 4-# BARS 12" O.C.	6'-0" x 6'-0" x 1'-0" 10-# BARS 4-# DOWELS 3'-0" LONG
4, 5, 7, 8, 9, 10.	6.	10' x 14" 4-# BARS 12" O.C.	10' x 16" 4-# BARS 12" O.C.	10' x 20" 4-# BARS 12" O.C.	12' x 20" 4-# BARS 12" O.C.	5'-3" x 5'-5" x 1'-5" 14-# BARS 4-# DOWELS 3'-0" LONG
11, 14, 21, 24, 29, 32.	6.	10' x 14" 4-# BARS 12" O.C.	10' x 16" 4-# BARS 12" O.C.	10' x 24" 4-# BARS 12" O.C.	12' x 24" 4-# BARS 12" O.C.	5'-3" x 5'-5" x 1'-5" 14-# BARS 4-# DOWELS 3'-0" LONG
12, 13, 22, 23, 30, 31.	6.	10' x 14" 4-# BARS 12" O.C.	10' x 16" 4-# BARS 12" O.C.	10' x 20" 4-# BARS 12" O.C.	12' x 20" 4-# BARS 12" O.C.	4'-6" x 4'-6" x 1'-0" 10-# BARS 8-# DOWELS 3'-0" LONG
15, 20, 33.	3.	10' x 14" 4-# BARS 12" O.C.	10' x 16" 4-# BARS 12" O.C.	10' x 22" 4-# BARS 12" O.C.	12' x 22" 4-# BARS 12" O.C.	4'-6" x 4'-6" x 1'-0" 10-# BARS 8-# DOWELS 3'-0" LONG
16, 19, 34.	3.	10' x 14" 4-# BARS 12" O.C.	10' x 16" 4-# BARS 12" O.C.	10' x 22" 4-# BARS 12" O.C.	12' x 22" 4-# BARS 12" O.C.	4'-6" x 4'-6" x 1'-0" 10-# BARS 8-# DOWELS 3'-0" LONG
17, 18, 35.	3.	10' x 14" 4-# BARS 12" O.C.	10' x 16" 4-# BARS 12" O.C.	10' x 22" 4-# BARS 12" O.C.	12' x 22" 4-# BARS 12" O.C.	4'-6" x 4'-6" x 1'-0" 10-# BARS 8-# DOWELS 3'-0" LONG
25, 28.	2.	10' x 14" 4-# BARS 12" O.C.	10' x 16" 4-# BARS 12" O.C.	10' x 22" 4-# BARS 12" O.C.	12' x 22" 4-# BARS 12" O.C.	4'-6" x 4'-6" x 1'-0" 10-# BARS 8-# DOWELS 3'-0" LONG
26, 27.	2.	10' x 14" 4-# BARS 12" O.C.	10' x 16" 4-# BARS 12" O.C.	10' x 22" 4-# BARS 12" O.C.	12' x 22" 4-# BARS 12" O.C.	4'-6" x 4'-6" x 1'-0" 10-# BARS 8-# DOWELS 3'-0" LONG
36.	1.	10' x 14" 4-# BARS 12" O.C.	10' x 16" 4-# BARS 12" O.C.	10' x 22" 4-# BARS 12" O.C.	12' x 22" 4-# BARS 12" O.C.	4'-6" x 4'-6" x 1'-0" 10-# BARS 8-# DOWELS 3'-0" LONG
37.	1.	10' x 14" 4-# BARS 12" O.C.	10' x 16" 4-# BARS 12" O.C.	10' x 22" 4-# BARS 12" O.C.	12' x 22" 4-# BARS 12" O.C.	4'-6" x 4'-6" x 1'-0" 10-# BARS 8-# DOWELS 3'-0" LONG
38, 41.	2.	10' x 14" 4-# BARS 12" O.C.	10' x 16" 4-# BARS 12" O.C.	10' x 22" 4-# BARS 12" O.C.	12' x 22" 4-# BARS 12" O.C.	4'-6" x 4'-6" x 1'-0" 10-# BARS 8-# DOWELS 3'-0" LONG
39, 40, 42, 43, 44, 45.	6.	10' x 14" 4-# BARS 12" O.C.	10' x 16" 4-# BARS 12" O.C.	10' x 22" 4-# BARS 12" O.C.	12' x 22" 4-# BARS 12" O.C.	4'-6" x 4'-6" x 1'-0" 10-# BARS 8-# DOWELS 3'-0" LONG
46, 49, 52, 55, 60, 63.	6.	10' x 14" 4-# BARS 12" O.C.	10' x 16" 4-# BARS 12" O.C.	10' x 22" 4-# BARS 12" O.C.	12' x 22" 4-# BARS 12" O.C.	4'-6" x 4'-6" x 1'-0" 10-# BARS 8-# DOWELS 3'-0" LONG
50, 51, 64.	3.	10' x 14" 4-# BARS 12" O.C.	10' x 16" 4-# BARS 12" O.C.	10' x 22" 4-# BARS 12" O.C.	12' x 22" 4-# BARS 12" O.C.	4'-6" x 4'-6" x 1'-0" 10-# BARS 8-# DOWELS 3'-0" LONG
47, 48, 53, 54, 56, 57, 58, 59, 61, 62.	10.	10' x 14" 4-# BARS 12" O.C.	10' x 16" 4-# BARS 12" O.C.	10' x 22" 4-# BARS 12" O.C.	12' x 22" 4-# BARS 12" O.C.	4'-6" x 4'-6" x 1'-0" 10-# BARS 8-# DOWELS 3'-0" LONG
65, 66.	2.	10' x 14" 4-# BARS 12" O.C.	10' x 16" 4-# BARS 12" O.C.	10' x 22" 4-# BARS 12" O.C.	12' x 22" 4-# BARS 12" O.C.	4'-6" x 4'-6" x 1'-0" 10-# BARS 8-# DOWELS 3'-0" LONG
67, 68.	2.	10' x 14" 4-# BARS 12" O.C.	10' x 16" 4-# BARS 12" O.C.	10' x 22" 4-# BARS 12" O.C.	12' x 22" 4-# BARS 12" O.C.	4'-6" x 4'-6" x 1'-0" 10-# BARS 8-# DOWELS 3'-0" LONG

BEAM SCHEDULE

GROUND FLOOR						FIRST FLOOR						SECOND FLOOR					
BEAM MARK	SIZE	NO.	STRAIGHT BAR	BENT BAR	TIE RODS	BEAM MARK	SIZE	NO.	STRAIGHT BAR	BENT BAR	TIE RODS	BEAM MARK	SIZE	NO.	STRAIGHT BAR	BENT BAR	TIE RODS
			NO. SIZE LENGTH	NO. SIZE LENGTH MARK	NO. SIZE LENGTH MARK				NO. SIZE LENGTH	NO. SIZE LENGTH MARK	NO. SIZE LENGTH MARK				NO. SIZE LENGTH	NO. SIZE LENGTH MARK	NO. SIZE LENGTH MARK
A-1	10' x 20"	1	2 1 1/2"	3 1"	26 3/8"	B-1	10' x 20"	2	3 1"	3 1"	26 3/8"	C-1	10' x 20"	2	3 1"	3 1"	26 3/8"
A-2	14' x 20"	2	4 1 1/2"	3 1 1/2"	26 3/8"	D-2	10' x 20"	2	2 3/8"	1 3/8"	26 3/8"	C-2	10' x 20"	2	2 3/8"	1 3/8"	26 3/8"
A-3	12' x 20"	3	3 1 1/2"	3 1"	26 3/8"	B-3	10' x 20"	2	3 1"	3 1"	26 3/8"	C-3	10' x 20"	2	3 1"	3 1"	26 3/8"
A-4	12' x 20"	2	3 1 1/2"	3 1"	26 3/8"	D-4	10' x 20"	4	3 1 1/2"	3 1"	26 3/8"	C-4	12' x 20"	4	3 1 1/2"	3 1"	26 3/8"
A-5	10' x 16"	1	2 1"	2 3/8"	12 3/8"	B-5	10' x 16"	2	2 3/8"	2 3/8"	22 3/8"	C-5	10' x 16"	2	2 3/8"	2 3/8"	22 3/8"
A-6	10' x 20"	2	2 3/8"	2 3/8"	10 3/8"	B-6	14' x 20"	8	4 1"	3 1"	26 3/8"	C-6	14' x 20"	8	4 1"	3 1"	26 3/8"
A-7	10' x 20"	1	2 3/8"	2 3/8"	10 3/8"	B-7	14' x 16"	4	2 1"	2 3/8"	24 3/8"	C-7	14' x 16"	4	2 1"	2 3/8"	24 3/8"
A-8	10' x 20"	1	2 3/8"	2 3/8"	10 3/8"	D-8	12' x 20"	12	3 1"	3 1"	26 3/8"	C-8	12' x 20"	12	3 1"	3 1"	26 3/8"
A-9	10' x 18"	4	1 1 1/2"	2 1"	10 3/8"	D-9	12' x 16"	6	1 3/8"	2 3/8"	10 3/8"	C-9	12' x 16"	6	1 3/8"	2 3/8"	10 3/8"
A-10	12' x 10"	1	2 3/8"	2 3/8"	10 3/8"	B-10	12' x 20"	2	3 1"	3 1"	26 3/8"	C-10	12' x 20"	4	3 1"	3 1"	26 3/8"
A-11	8' x 10"	1	2 3/8"	2 3/8"	10 3/8"	D-11	12' x 16"	2	1 3/8"	2 3/8"	10 3/8"	C-11	12' x 16"	2	1 3/8"	2 3/8"	10 3/8"
A-12	8' x 16"	1	2 3/8"	2 3/8"	10 3/8"	D-12	12' x 20"	2	2 1"	2 3/8"	14 3/8"	C-12	10' x 16"	1	2 3/8"	2 3/8"	14 3/8"
A-13	8' x 10"	2	2 3/8"	2 3/8"	10 3/8"	D-13	10' x 16"	2	2 3/8"	2 3/8"	10 3/8"	C-13	10' x 16"	2	2 3/8"	2 3/8"	10 3/8"
A-14	8' x 18"	1	2 3/8"	2 3/8"	10 3/8"	B-14	10' x 20"	2	2 3/8"	1 1/2"	12 3/8"	C-14	10' x 20"	2	2 3/8"	1 1/2"	12 3/8"
A-15	6' x 18"	1	2 3/8"	2 3/8"	10 3/8"	D-15	10' x 16"	1	2 3/8"	2 3/8"	12 3/8"	C-15	10' x 16"	1	2 3/8"	2 3/8"	12 3/8"
						B-16	10' x 16"	2	2 3/8"	2 3/8"	12 3/8"	C-16	10' x 16"	2	2 3/8"	2 3/8"	12 3/8"
						D-17	10' x 20"	16	2 5/8"	2 1/2"	12 3/8"	C-17	10' x 20"	16	2 5/8"	2 1/2"	12 3/8"
						D-18	10' x 20"	6	2 1/2"	2 1/2"	12 3/8"	C-18	10' x 20"	6	2 1/2"	2 1/2"	12 3/8"
						D-19	10' x 20"	1	2 5/8"	2 1/2"	12 3/8"	C-19	10' x 20"	1	2 5/8"	2 1/2"	12 3/8"
						B-20	10' x 20"	2	2 3/8"	2 1/2"	14 3/8"	C-20	10' x 20"	2	2 3/8"	2 1/2"	14 3/8"
						D-21	10' x 16"	1	2 3/8"	2 3/8"	14 3/8"						
						B-22	10' x 18"	1	2 1"	2 1"	18 3/8"						

All footings to have same number and size of bars as columns above. All columns to have bars unless otherwise noted. See page 10 for details.