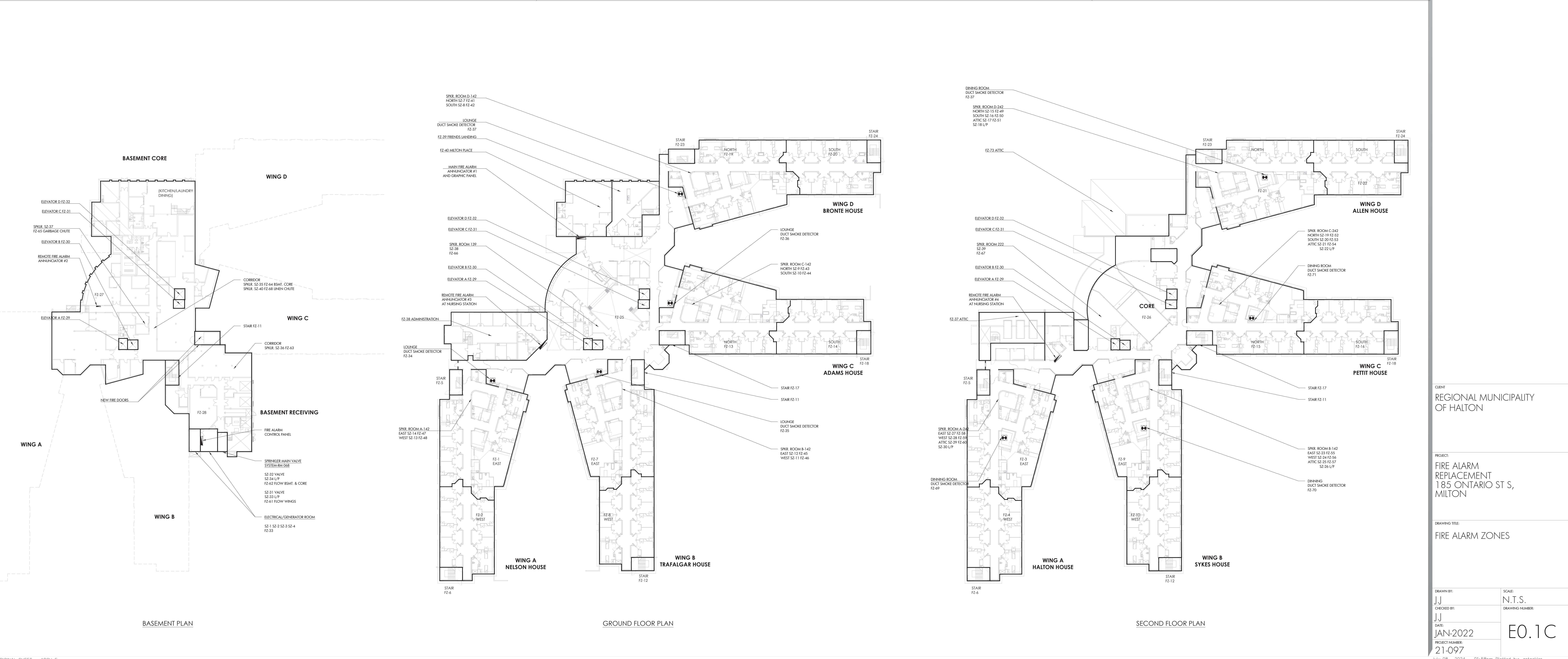


FIRE ALARM ZONES			FIRE ALARM DIRECTORY			SUPERVISORY ZONES		
FZ - 1 - GROUND FLOOR - NELSON WING A - EAST			FZ - 40 - GROUND FLOOR - MILTON PLACE			SZ - 1 - GENERATOR RUNNING		
FZ - 2 - GROUND FLOOR - NELSON WING A - WEST			FZ - 41 - GROUND FLOOR - BRONTE WING D - NORTH - SPRINKLER FLOW			SZ - 2 - GENERATOR INOPERATIVE		
FZ - 3 - SECOND FLOOR - HALTON WING A - EAST			FZ - 42 - GROUND FLOOR - BRONTE WING D - SOUTH - SPRINKLER FLOW			SZ - 3 - DIESEL FUEL LOW		
FZ - 4 - SECOND FLOOR - HALTON WING A - WEST			FZ - 43 - GROUND FLOOR - ADAMS WING C - NORTH - SPRINKLER FLOW			SZ - 4 - LOW BATTERY		
FZ - 5 - EAST STAIR - HALTON WING A			FZ - 44 - GROUND FLOOR - ADAMS WING C - SOUTH - SPRINKLER FLOW			SZ - 5 - SPARE		
FZ - 6 - WEST STAIR - HALTON WING A			FZ - 45 - GROUND FLOOR - TRAFALGAR WING B - EAST - SPRINKLER FLOW			SZ - 6 - SPARE		
FZ - 7 - GROUND FLOOR - TRAFALGAR WING B - EAST			FZ - 46 - GROUND FLOOR - TRAFALGAR WING B - WEST - SPRINKLER FLOW			SZ - 7 - GROUND FLOOR - BRONTE WING D - NORTH - SPRINKLER TROUBLE		
FZ - 8 - GROUND FLOOR - TRAFALGAR WING B - WEST			FZ - 47 - GROUND FLOOR - NELSON WING A - EAST - SPRINKLER FLOW			SZ - 8 - GROUND FLOOR - BRONTE WING D - SOUTH - SPRINKLER TROUBLE		
FZ - 9 - SECOND FLOOR - SYKES WING B - EAST			FZ - 48 - GROUND FLOOR - NELSON WING A - WEST - SPRINKLER FLOW			SZ - 9 - GROUND FLOOR - ADAMS WING C - NORTH - SPRINKLER TROUBLE		
FZ - 10 - SECOND FLOOR - SYKES WING B - WEST			FZ - 49 - SECOND FLOOR - ALLEN WING D - NORTH - SPRINKLER FLOW			SZ - 10 - GROUND FLOOR - ADAMS WING C - SOUTH - SPRINKLER TROUBLE		
FZ - 11 - EAST STAIR - SYKES WING B			FZ - 50 - SECOND FLOOR - ALLEN WING D - SOUTH - SPRINKLER FLOW			SZ - 11 - GROUND FLOOR - TRAFALGAR WING B - WEST - SPRINKLER TROUBLE		
FZ - 12 - WEST STAIR - SYKES WING B			FZ - 51 - ATTIC - ALLEN WING D - SPRINKLER FLOW			SZ - 12 - GROUND FLOOR - TRAFALGAR WING B - EAST - SPRINKLER TROUBLE		
FZ - 13 - GROUND FLOOR - ADAMS WING C - NORTH			FZ - 52 - SECOND FLOOR - PETTIT WING C - NORTH - SPRINKLER FLOW			SZ - 13 - GROUND FLOOR - NELSON WING A - WEST - SPRINKLER TROUBLE		
FZ - 14 - GROUND FLOOR - ADAMS WING C - SOUTH			FZ - 53 - SECOND FLOOR - PETTIT WING C - SOUTH - SPRINKLER FLOW			SZ - 14 - GROUND FLOOR - NELSON WING A - EAST - SPRINKLER TROUBLE		
FZ - 15 - SECOND FLOOR - PETTIT WING C - NORTH			FZ - 54 - ATTIC - PETTIT WING C - SPRINKLER FLOW			SZ - 15 - SECOND FLOOR - ALLEN WING D - NORTH - SPRINKLER TROUBLE		
FZ - 16 - SECOND FLOOR - PETTIT WING C - SOUTH			FZ - 55 - SECOND FLOOR - SYKES WING B - EAST - SPRINKLER FLOW			SZ - 16 - SECOND FLOOR - ALLEN WING D - SOUTH - SPRINKLER TROUBLE		
FZ - 17 - NORTH STAIR - PETTIT WING C			FZ - 56 - SECOND FLOOR - SYKES WING B - WEST - SPRINKLER FLOW			SZ - 17 - ATTIC - ALLEN WING D - SPRINKLER TROUBLE		
FZ - 18 - SOUTH STAIR - PETTIT WING C			FZ - 57 - ATTIC - SYKES WING B - SPRINKLER FLOW			SZ - 18 - ATTIC - ALLEN WING D - LOW PRESSURE SPRINKLER TROUBLE		
FZ - 19 - GROUND FLOOR - BRONTE WING D - NORTH			FZ - 58 - SECOND FLOOR - HALTON WING A - EAST - SPRINKLER FLOW			SZ - 19 - SECOND FLOOR - PETTIT WING C - NORTH - SPRINKLER TROUBLE		
FZ - 20 - GROUND FLOOR - BRONTE WING D - SOUTH			FZ - 59 - SECOND FLOOR - HALTON WING A - WEST - SPRINKLER FLOW			SZ - 20 - SECOND FLOOR - PETTIT WING C - SOUTH - LOW PRESSURE SPRINKLER TROUBLE		
FZ - 21 - SECOND FLOOR - ALLEN WING D - NORTH			FZ - 60 - ATTIC - HALTON WING A - SPRINKLER FLOW			SZ - 21 - ATTIC - PETTIT WING C - SPRINKLER TROUBLE		
FZ - 22 - SECOND FLOOR - ALLEN WING D - SOUTH			FZ - 61 - MAIN SPRINKLER FLOW - WINGS (A-B-C-D)			SZ - 22 - ATTIC - PETTIT WING C - LOW PRESSURE SPRINKLER TROUBLE		
FZ - 23 - NORTH STAIR - ALLEN WING D			FZ - 62 - MAIN SPRINKLER FLOW - WINGS (BASEMENT CORE, GRD, 2ND) GARBAGE CHUTE, LINEN ADMINISTRATION AND DAYCARE			SZ - 23 - SECOND FLOOR - SYKES WING B - EAST - SPRINKLER TROUBLE		
FZ - 24 - SOUTH STAIR - ALLEN WING D			FZ - 63 - BASEMENT CORE - SPRINKLER FLOW			SZ - 24 - SECOND FLOOR - SYKES WING B - WEST - SPRINKLER TROUBLE		
FZ - 25 - GROUND FLOOR - CORE			FZ - 64 - BASEMENT RECEIVING - SPRINKLER FLOW			SZ - 25 - ATTIC - SYKES WING B - SPRINKLER TROUBLE		
FZ - 26 - SECOND FLOOR - CORE			FZ - 65 - GARBAGE CHUTE - SPRINKLER FLOW			SZ - 26 - ATTIC - SYKES WING B - LOW PRESSURE SPRINKLER TROUBLE		
FZ - 27 - BASEMENT CORE			FZ - 66 - GROUND FLOOR - CORE - SPRINKLER FLOW			SZ - 27 - SECOND FLOOR - HALTON WING A - EAST - SPRINKLER TROUBLE		
FZ - 28 - BASEMENT RECEIVING			FZ - 67 - SECOND FLOOR - CORE - SPRINKLER FLOW			SZ - 28 - SECOND FLOOR - HALTON WING A - WEST - SPRINKLER TROUBLE		
FZ - 29 - ELEVATOR 1 (PASSENGER)			FZ - 68 - LINEN CHUTE - SPRINKLER FLOW			SZ - 29 - ATTIC - HALTON WING A - SPRINKLER TROUBLE		
FZ - 30 - ELEVATOR 2 (SERVICE)			FZ - 69 - SECOND FLOOR - HALTON WING A - DINNING SMOKE DETECTOR			SZ - 30 - ATTIC - HALTON WING A - LOW PRESSURE SPRINKLER TROUBLE		
FZ - 31 - ELEVATOR 3 (PASSENGER)			FZ - 70 - SECOND FLOOR - SYKES WING B - DINNING SMOKE DETECTOR			SZ - 31 - CONTROL VALVE EAST SPRINKLER TROUBLE - WINGS A-B-C-D		
FZ - 32 - ELEVATOR 4 (SERVICE)			FZ - 71 - SECOND FLOOR - PETTIT WING C - DINNING SMOKE DETECTOR			SZ - 32 - CONTROL VALVE WEST SPRINKLER TROUBLE - BASEMENT CORE, GRD, 2ND GARBAGE & LINEN		
FZ - 33 - ELECTRICAL / GENERATOR ROOM			FZ - 72 - SECOND FLOOR - ALLEN WING D - DINNING SMOKE DETECTOR					
FZ - 34 - GROUND FLOOR - NELSON WING A - LOUNGE DUCT SMOKE DETECTOR			FZ - 73 - ATTIC - MILTON PLACE					
FZ - 35 - GROUND FLOOR - TRAFALGAR WING B - LOUNGE DUCT SMOKE DETECTOR			FZ - 74 - ATTIC - ADMINISTRATION					
FZ - 36 - GROUND FLOOR - ADAMS WING C - LOUNGE DUCT SMOKE DETECTOR								
FZ - 37 - GROUND FLOOR - BRONTE WING D - LOUNGE DUCT SMOKE DETECTOR								
FZ - 38 - ADMINISTRATION								
FZ - 39 - FRIENDS LANDING								



TRUE NORTH

CONSTRUCTION NORTH

15 Foundry Street, Dundas, ON, L9H 2Y6
Phone: (905) 648-0373 www.manteconpartners.com

REVIEW ALL DRAWINGS AND VERIFY ALL DIMENSIONS AT THE SITE. DO NOT SCALE THE DRAWINGS. REVIEW ALL DIMENSIONS TO THE DIMENSIONS BEING INDICATED. VERIFY ANY CONSTRUCTION OR SHOP FABRICATION. ALL DRAWINGS, SPECIFICATIONS AND RELATED DOCUMENTS ARE THE PROPERTY OF MANTECON PARTNERS. NO PARTS MAY BE REPRODUCED OR TRANSMITTED IN ANY FORM OR BY ANY MEANS, ELECTRONIC OR MECHANICAL, WITHOUT THE WRITTEN PERMISSION OF MANTECON PARTNERS.

NO.	ISSUED	DATE	BY
4	ISSUED FOR REVIEW	2024-07-08	A.S.
3	ISSUED FOR REVIEW	2023-09-02	N.A.
2	ISSUED FOR REVIEW	2023-05-05	N.A.
1	ISSUED FOR REVIEW	2021-10-20	JJ

CLIENT
REGIONAL MUNICIPALITY OF HALTON

PROJECT
FIRE ALARM REPLACEMENT
185 ONTARIO ST S,
MILTON

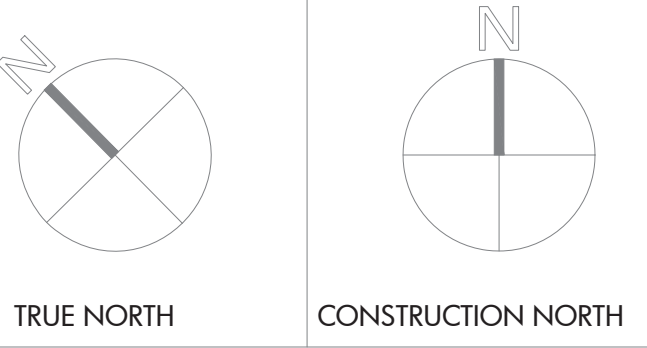
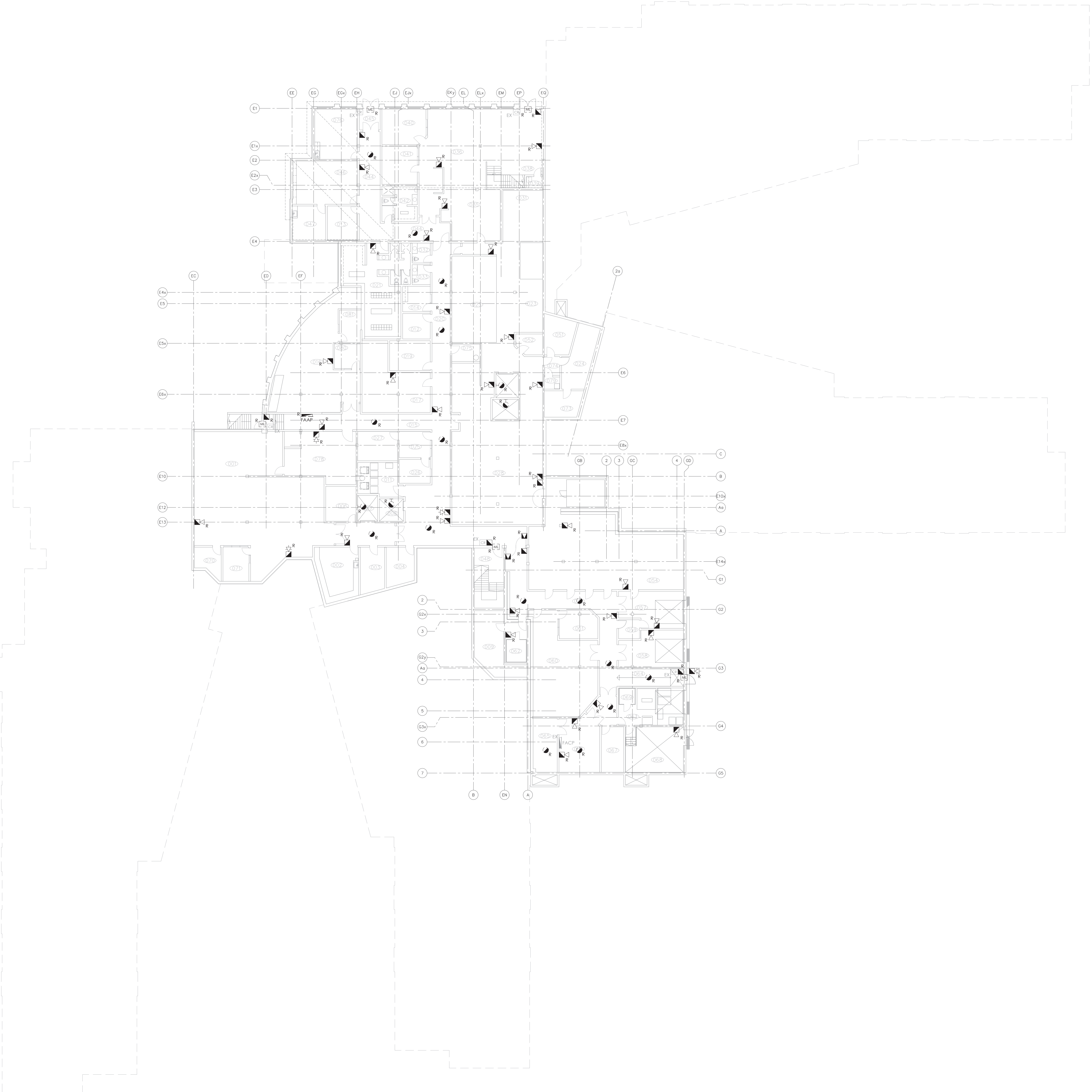
DRAWING TITLE
FIRE ALARM ZONES

DRAWN BY: JJ	SCALE: N.T.S.
CHECKED BY: JJ	DRAWING NUMBER:
DATE: JAN-2022	
PROJECT NUMBER: 21-097	E0.1C

July 08, 2024 - 01:58pm Plotted by: astockier

DRAWING NOTES

- 1 THE BIDDING CONTRACTOR SHALL REVIEW FROM THE OWNER THE LATEST FIRE ALARM ANNUAL TESTING REPORT, PREPARED BY HAMILTON FIRE CONTROL COMPANY DATED MAY 2024. THE DEVICE TYPE AND QUANTITIES OUTLINED IN THAT DOCUMENT SHALL BE ASSUMED TO BE THE FINAL COUNT OF DEVICES INSTALLED ON SITE. ALL DEVICES MAY NOT BE SHOWN ON THE DRAWING SET AND IT IS THE CONTRACTOR'S RESPONSIBILITY TO READ ALL DOCUMENTS IN ITS ENTIRETY BEFORE BIDDING.
- 2 REMOVE AND DISPOSE OF ALL INITIATING AND SIGNALLING FIRE ALARM DEVICES ONLY, INCLUDING THE END-OF-LINE RESISTORS.
- 3 THE EXISTING FIRE ALARM HEAD CONTROL UNIT (SIMPLEX 4100ES), DIALER, REMOTE ANNUNCIATOR PANEL, C/W BATTERIES, AND ENCLOSURE SHALL REMAIN OPERATIONAL THROUGHOUT THE PROJECT.
- 4 KEEP ALL WIRING AND CONDUIT THROUGHOUT THE BUILDING. THE EXISTING WIRING AND CONDUIT SHALL BE RE-USED AS PART OF THE NEW FIRE ALARM INSTALLATION.
- 5 ALL SPRINKLER FIRE ALARM DEVICES SHALL REMAIN EXISTING THROUGHOUT THE BUILDING, TYPICAL.
- 6 REMOVE AND DISPOSE EXISTING REMOTE FIRE ALARM ANNUNCIATOR PANEL (TO BE REPLACED BY NEW UNIT). KEEP ALL THE EXISTING WIRING/CONDUITS AND ASSOCIATED ELECTRICAL CONNECTIONS TO BE REUSED FOR THE INSTALLATION OF NEW FAAP. COORDINATE WITH OTHER TRADES TO MINIMIZE THE DOWNTIME.



15 Foundry Street, Dundas, ON, L9H 2Y6
Phone: (905) 648-0373 www.manteconpartners.com



REVIEW ALL DRAWINGS AND VERIFY ALL DIMENSIONS AT THE SITE. DO NOT SCALE THE DRAWINGS. SHOW ALL DIMENSIONS TO THE DIMENSION LINES. INCLUDE ANY AND ALL CONSTRUCTION OR SHOP FABRICATION. ALL DRAWINGS, SPECIFICATIONS AND RELATED DOCUMENTS ARE THE PROPERTY OF MANTECON PARTNERS. NO PARTS MAY BE REPRODUCED OR TRANSMITTED IN ANY FORM OR BY ANY MEANS, ELECTRONIC OR MECHANICAL, WITHOUT THE WRITTEN PERMISSION OF MANTECON PARTNERS.

NO.	ISSUED	DATE	BY
1	ISSUED FOR 50% REVIEW	2021-10-20	JJ
2	ISSUED FOR 50% REVIEW	2023-05-05	N.A.
3	ISSUED FOR TENDER	2023-06-02	N.A.
4	ISSUED FOR REVIEW	2024-07-08	A.S.

NO.	ISSUED	DATE	BY
1	ISSUED FOR 50% REVIEW	2021-10-20	JJ
2	ISSUED FOR 50% REVIEW	2023-05-05	N.A.
3	ISSUED FOR TENDER	2023-06-02	N.A.
4	ISSUED FOR REVIEW	2024-07-08	A.S.

CLIENT
REGIONAL MUNICIPALITY
OF HALTON

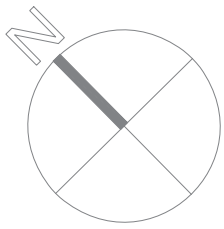
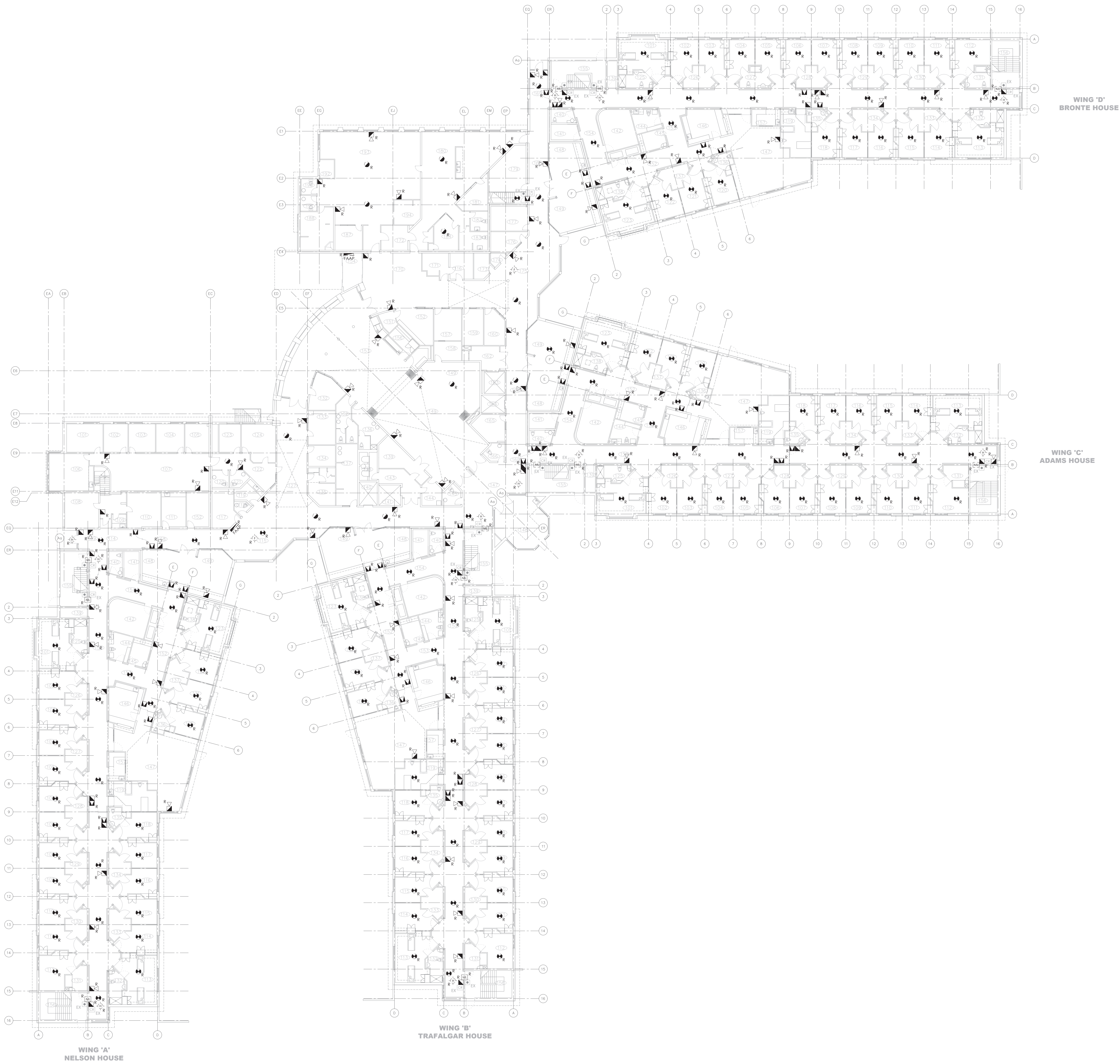
PROJECT
FIRE ALARM
REPLACEMENT
185 ONTARIO ST S,
MILTON

DRAWING TITLE
BASEMENT FLOOR
FIRE ALARM DEMOLITION PLAN

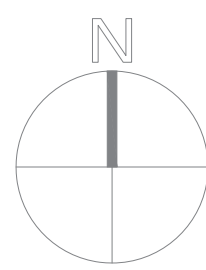
DRAWN BY: JJ	SCALE: 1/16" = 1'-0"
CHECKED BY: JJ	DRAWING NUMBER: E1.0C
DATE: JAN-2022	
PROJECT NUMBER: 21-097	

DRAWING NOTES

- 1 THE BIDDING CONTRACTOR SHALL REVIEW FROM THE OWNER THE LATEST FIRE ALARM ANNUAL TESTING REPORT, PREPARED BY HAMILTON FIRE CONTROL COMPANY DATED MAY 2024. THE DEVICE TYPE AND QUANTITIES OUTLINED IN THAT DOCUMENT SHALL BE ASSUMED TO BE THE FINAL COUNT OF DEVICES INSTALLED ON SITE. ALL DEVICES MAY NOT BE SHOWN ON THE DRAWING SET AND IT IS THE CONTRACTOR'S RESPONSIBILITY TO READ ALL DOCUMENTS IN ITS ENTIRETY BEFORE BIDDING.
- 2 REMOVE AND DISPOSE OF ALL INITIATING AND SIGNALLING FIRE ALARM DEVICES ONLY, INCLUDING THE END-OF-LINE RESISTORS.
- 3 THE EXISTING FIRE ALARM HEAD CONTROL UNIT (SIMPLEX 4100ES), DIALER, REMOTE ANNUNCIATOR PANEL, C/W BATTERIES, AND ENCLOSURE SHALL REMAIN OPERATIONAL THROUGHOUT THE PROJECT.
- 4 KEEP ALL WIRING AND CONDUIT THROUGHOUT THE BUILDING. THE EXISTING WIRING AND CONDUIT SHALL BE RE-USED AS PART OF THE NEW FIRE ALARM INSTALLATION.
- 5 ALL SPRINKLER FIRE ALARM DEVICES SHALL REMAIN EXISTING THROUGHOUT THE BUILDING, TYPICAL.
- 6 REMOVE AND DISPOSE EXISTING REMOTE FIRE ALARM ANNUNCIATOR PANELS (TO BE REPLACED BY NEW UNITS). KEEP ALL THE EXISTING WIRING/CONDUITS AND ASSOCIATED ELECTRICAL CONNECTIONS TO BE REUSED FOR THE INSTALLATION OF NEW FAAPS. COORDINATE WITH OTHER TRADES TO MINIMIZE THE DOWNTIME.



TRUE NORTH



CONSTRUCTION NORTH

MANTECON PARTNERS
STRUCTURAL MECHANICAL ELECTRICAL CIVIL ENGINEERS

15 Foundry Street, Dundas, ON, L9H 2Y6
Phone: (905) 648-0373 www.manteconpartners.com

DATE



REVIEW ALL DRAWINGS AND VERIFY ALL DIMENSIONS AT THE SITE. DO NOT SCALE THE DRAWINGS. REVIEW ALL DIMENSIONS TO THE DIMENSIONS SHOWN ON THE DRAWING. ANY CONSTRUCTION OR REPAIR FABRICATION, ALL DRAWINGS, SPECIFICATIONS AND RELATED DOCUMENTS ARE THE PROPERTY OF MANTECON PARTNERS. NO PART OF THESE DOCUMENTS SHALL BE REPRODUCED, COPIED, REPRODUCED OR TRANSMITTED IN ANY FORM OR BY ANY MEANS, WITHOUT THE WRITTEN PERMISSION OF MANTECON PARTNERS.

NO.	ISSUED	DATE	BY
4	ISSUED FOR REVIEW	2024-07-08	A.S.
3	ISSUED FOR REVIEW	2023-09-02	N.A.
2	ISSUED FOR REVIEW	2023-05-05	N.A.
1	ISSUED FOR REVIEW	2021-10-20	J.J.

CLIENT
REGIONAL MUNICIPALITY
OF HALTON

PROJECT
FIRE ALARM
REPLACEMENT
185 ONTARIO ST S,
MILTON

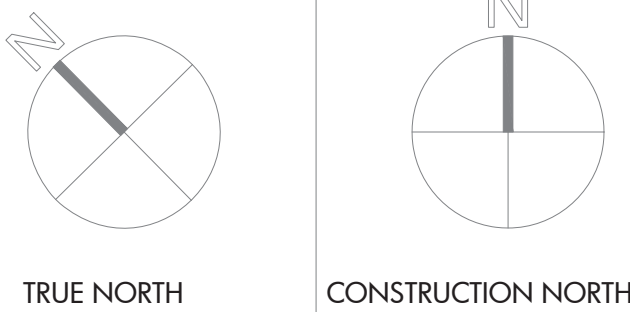
DRAWING TITLE
GROUND FLOOR
FIRE ALARM DEMOLITION PLAN

DRAWN BY: JJ	SCALE: 1/16" = 1'-0"
CHECKED BY: JJ	DRAWING NUMBER: E1.1C
DATE: JAN-2022	
PROJECT NUMBER: 21-097	

July 08, 2024 - 01:58pm Plotted by: astockier

DRAWING NOTES

- 1 THE BIDDING CONTRACTOR SHALL REVIEW FROM THE OWNER THE LATEST FIRE ALARM ANNUAL TESTING REPORT, PREPARED BY HAMILTON FIRE CONTROL COMPANY DATED MAY 2024. THE DEVICE TYPE AND QUANTITIES OUTLINED IN THAT DOCUMENT SHALL BE ASSUMED TO BE THE FINAL COUNT OF DEVICES INSTALLED ON SITE. ALL DEVICES MAY NOT BE SHOWN ON THE DRAWING SET AND IT IS THE CONTRACTOR'S RESPONSIBILITY TO READ ALL DOCUMENTS IN ITS ENTIRETY BEFORE BIDDING.
- 2 REMOVE AND DISPOSE OF ALL INITIATING AND SIGNALLING FIRE ALARM DEVICES ONLY, INCLUDING THE END-OF-LINE RESISTORS.
- 3 THE EXISTING FIRE ALARM HEAD CONTROL UNIT (SIMPLEX 4100ES), DIALER, REMOTE ANNUNCIATOR PANEL, C/W BATTERIES, AND ENCLOSURE SHALL REMAIN OPERATIONAL THROUGHOUT THE PROJECT.
- 4 KEEP ALL WIRING AND CONDUIT THROUGHOUT THE BUILDING. THE EXISTING WIRING AND CONDUIT SHALL BE RE-USED AS PART OF THE NEW FIRE ALARM INSTALLATION.
- 5 ALL SPRINKLER FIRE ALARM DEVICES SHALL REMAIN EXISTING THROUGHOUT THE BUILDING, TYPICAL.
- 6 REMOVE AND DISPOSE EXISTING REMOTE FIRE ALARM ANNUNCIATOR PANEL (TO BE REPLACED BY NEW UNIT). KEEP ALL THE EXISTING WIRING/CONDUITS AND ASSOCIATED ELECTRICAL CONNECTIONS TO BE REUSED FOR THE INSTALLATION OF NEW FAAP. COORDINATE WITH OTHER TRADES TO MINIMIZE THE DOWNTIME.



MAANTECON PARTNERS
STRUCTURAL MECHANICAL ELECTRICAL CIVIL ENGINEERS

15 Foundry Street, Dundas, ON, L9H 2Y6
Phone: (905) 648-0373 www.manteconpartners.com



REVIEW ALL DRAWINGS AND VERIFY ALL DIMENSIONS AT THE SITE. DO NOT SCALE THE DRAWINGS. REVIEW ALL DIMENSIONS TO THE DIMENSIONS BEFORE PROCEEDING WITH ANY CONSTRUCTION OR STOP FABRICATION. ALL DRAWINGS, SPECIFICATIONS AND RELATED DOCUMENTS ARE THE PROPERTY OF MAANTECON PARTNERS. NO PARTS MAY BE REPRODUCED OR TRANSMITTED IN ANY FORM OR BY ANY MEANS, ELECTRONIC OR MECHANICAL, WITHOUT THE WRITTEN PERMISSION OF MAANTECON PARTNERS.

4	ISSUED FOR REVIEW	2024/07/08	A.S.
3	ISSUED FOR REVIEW	2023/06/09	N.A.
2	ISSUED FOR REVIEW	2023/05/05	N.A.
1	ISSUED FOR REVIEW	2021/10/20	J.J.

NO.	ISSUED	DATE	BY
-----	--------	------	----

CLIENT
REGIONAL MUNICIPALITY
OF HALTON

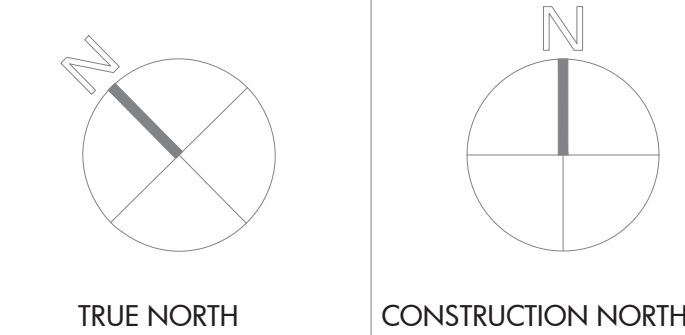
PROJECT
FIRE ALARM
REPLACEMENT
185 ONTARIO ST S,
MILTON

DRAWING TITLE
2ND FLOOR
FIRE ALARM DEMOLITION PLAN

DRAWN BY: JJ	SCALE: 1/16" = 1'-0"
CHECKED BY: JJ	DRAWING NUMBER: E1.2C
DATE: JAN-2022	
PROJECT NUMBER: 21-097	

DRAWING NOTES

- 1 THE FIRE ALARM SYSTEM LAYOUT SHALL REMAIN AS EXISTING THROUGHOUT THE BUILDING, ALL NEW FIRE ALARM DEVICES SHALL MATCH THE EXISTING FOUND ON SITE.
- 2 RE-USE THE EXISTING WIRING AND CONDUIT, INSTALL IN THE EXACT LOCATION AS THE PREVIOUS DEVICE.
- 3 ALL DOOR HOLD OPEN DEVICES SHALL RELEASE LOCALLY VIA A RELAY-BASE SMOKE DETECTOR AND VIA THE FIRE ALARM SYSTEM ACTIVATION. INSTALL THE SMOKE DETECTOR WITHIN 1500MM OF THE DOORWAY.
- 4 ALL SPRINKLER FIRE ALARM DEVICES SHALL REMAIN EXISTING THROUGHOUT THE BUILDING, TYPICAL.
- 5 THE BIDDING CONTRACTOR SHALL REVIEW FROM THE OWNER THE LATEST FIRE ALARM ANNUAL TEST REPORT, PREPARED BY HAMILTON FIRE CONTROL COMPANY DATED MAY 2024. THE DEVICE TYPE AND QUANTITIES OUTLINED IN THAT DOCUMENT SHALL BE ASSUMED TO BE THE FINAL COUNT OF DEVICES INSTALLED ON SITE. ALL DEVICES MAY NOT BE SHOWN ON THE DRAWING SET AND IT IS THE CONTRACTOR'S RESPONSIBILITY TO READ ALL DOCUMENTS IN ITS ENTIRETY BEFORE BIDDING.
- 6 ALL EXISTING FIRE ALARM DEVICES VERIFIED AT THE MAIN FIRE ALARM PANEL THAT ARE NOT SHOWN ON THE DRAWINGS SHALL BE LOCATED ON SITE. ALLOW FOR DEVICE DISCOVERY, AND INFORM OWNER/ENGINEER FOR FURTHER DIRECTION.
- 7 PROVIDE NEW FIRE ALARM ANNUNCIATOR PANEL (FAAP) WHICH SHALL BE COMPATIBLE WITH THE EXISTING WIRING MODEL AND THE EXISTING FIRE ALARM CONTROL PANEL (SIMPLEX 4100 ES). RE-USE THE EXISTING WIRING/CONDUIT AND ALL ASSOCIATED ELECTRICAL CONNECTIONS TO RECONNECT (EXTEND OR PROVIDE NEW WIRING IF NECESSARY) THE EXISTING FIRE ALARM CIRCUITS TO THE NEW FAAP.
COORDINATE AND INFORM OWNER/ENGINEER FOR FURTHER DIRECTIONS.
- 8 AT THE COMPLETION OF THE PROJECT PERFORM A COMPLETE LIVE LOAD TEST ON THE FIRE ALARM SYSTEM. THE RUN-TIME TEST SHALL CONFORM WITH OBC REQUIREMENTS AND 5537 VERIFICATION STANDARDS.



MANTECON
PARTNERS
STRUCTURAL MECHANICAL ELECTRICAL CIVIL
ENGINEERS

15 Foundry Street, Dundas, ON, L9H 2V6
Phone: (905) 648-0373 www.marleconpartners.com

SEA1



REVIEW ALL DRAWINGS AND VERIFY ALL DIMENSIONS AT THE SITE. DO NOT SCALE THE DRAWINGS. REPORT ALL DISCREPANCIES TO THE ENGINEER BEFORE PROCEEDING WITH ANY CONSTRUCTION OR SHOP FABRICATION. ALL DRAWINGS, SPECIFICATIONS AND RELATED DOCUMENTS ARE THE COPYRIGHT PROPERTY OF MANIFECOR PARTNERS' AND MUST BE RETURNED UPON REQUEST. REPRODUCTION OF DRAWINGS, SPECIFICATIONS AND RELATED DOCUMENTS IN PART OR WHOLE IS FORBIDDEN WITHOUT THE ENGINEER'S WRITTEN PERMISSION.

4	ISSUED FOR PERMIT	2024-07-08	A.S
3	ISSUED FOR TENDER	2023-06-02	N.A
2	ISSUED FOR TENDER	2023-05-05	N.A
1	ISSUED FOR 50% REVIEW	2021-10-20	JJ
NO.	ISSUED	DATE	BY

NO.	ISSUED	DATE	BY
-----	--------	------	----

REGIONAL MUNICIPALITY
OF HALTON

PROJECT:
FIRE ALARM
REPLACEMENT
185 ONTARIO ST S,
MILTON

DRAWING TITLE:

BASEMENT FLOOR
FIRE ALARM PLAN

DRAWN BY: JJ	SCALE: 1/16" = 1'-0"
CHECKED BY: JJ	DRAWING NUMBER: E2.0C
DATE: JAN-2022	
PROJECT NUMBER: 21-097	

- DRAWING NOTES
- 1

THE FIRE ALARM SYSTEM LAYOUT SHALL REMAIN AS EXISTING THROUGHOUT THE BUILDING. ALL NEW FIRE ALARM DEVICES SHALL MATCH THE EXISTING FOUND ON SITE.
- 2

RE-USE THE EXISTING WIRING AND CONDUIT, INSTALL IN THE EXACT LOCATION AS THE PREVIOUS DEVICE.
- 3

ALL DOOR HOLD OPEN DEVICES SHALL RELEASE LOCALLY VIA A RELAY-BASE SMOKE DETECTOR AND VIA THE FIRE ALARM SYSTEM ACTIVATION. INSTALL THE SMOKE DETECTOR WITHIN 1500MM OF THE DOORWAY.
- 4

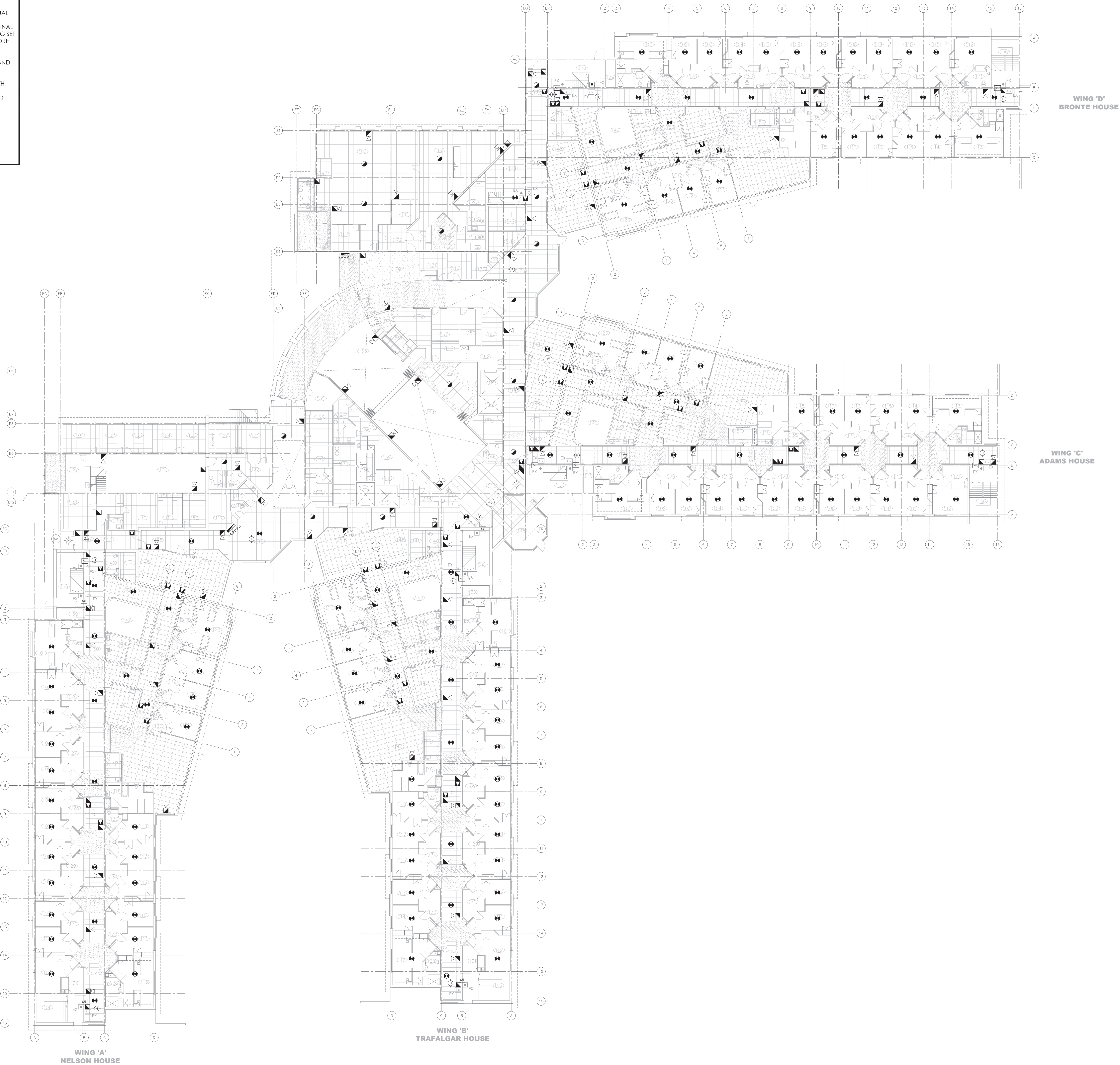
ALL SPRINKLER FIRE ALARM DEVICES SHALL REMAIN EXISTING THROUGHT OUT THE BUILDING. TYPICAL.
- 5

THE BIDDING CONTRACTOR SHALL REVIEW FROM THE OWNER THE LATEST FIRE ALARM ANNUAL TESTING REPORT, PREPARED BY HAMILTON FIRE CONTROL COMPANY DATED MAY 2024. THE DEVICE TYPE AND QUANTITIES OUTLINED IN THAT DOCUMENT SHALL BE ASSUMED TO BE THE FINAL COUNT OF DEVICES INSTALLED ON SITE. ALL DEVICES MAY NOT BE SHOWN ON THE DRAWING SET AND IT IS THE CONTRACTOR'S RESPONSIBILITY TO READ ALL DOCUMENTS IN ITS ENTIRETY BEFORE BIDDING.
- 6

ALL EXISTING FIRE ALARM DEVICES VERIFIED AT THE MAIN FIRE ALARM PANEL THAT ARE NOT SHOWN ON THE DRAWINGS SHALL BE LOCATED ON SITE. ALLOW FOR DEVICE DISCOVERY, AND INFORM OWNER/ENGINEER FOR FURTHER DIRECTION.
- 7

PROVIDE NEW FIRE ALARM ANNUNCIATOR PANEL (FAAP) WHICH SHALL BE COMPATIBLE WITH THE REMOVED MODEL AND THE EXISTING FIRE ALARM CONTROL PANEL (SIMPLEX 4100 ES). RE-USE THE EXISTING WIRING/CONDUIT AND ALL ASSOCIATED ELECTRICAL CONNECTIONS TO RECONNECT (EXTEND OR PROVIDE NEW WIRING IF NECESSARY) THE EXISTING FIRE ALARM CIRCUITS TO THE NEW FAAP. COORDINATE AND INFORM OWNER/ENGINEER FOR FURTHER DIRECTIONS.
- 8

AT THE COMPLETION OF THE PROJECT PERFORM A COMPLETE LIVE LOAD TEST ON THE FIRE ALARM SYSTEM, THE RUN-TIME SHALL CONFORM WITH OBC REQUIREMENTS AND 5537 VERIFICATION STANDARDS.



TRUE NORTH

CONSTRUCTION NORTH

15 Foundry Street, Dundas, ON, L9H 2Y6
Phone: (905) 648-0373 www.manteconpartners.com

PROFESSIONAL ENGINEER
100171693
JUL 8, 2024
PROVINCE OF ONTARIO
Regd. No. 21-097

REVIEW ALL DRAWINGS AND VERIFY ALL DIMENSIONS AT THE SITE. DO NOT SCALE THE DRAWINGS. BEFORE ANY CONSTRUCTION, THE ENGINEER MUST BE NOTIFIED. ANY CONSTRUCTION OR STOP-FABRICATION, ALL DRAWINGS, SPECIFICATIONS AND RELATED DOCUMENTS ARE THE PROPERTY OF MANTECON PARTNERS. NO PARTS BE REPRODUCED, REPRODUCED OR TRANSMITTED IN ANY FORM OR BY ANY MEANS, WITHOUT THE WRITTEN PERMISSION OF MANTECON PARTNERS.

NO.	ISSUED	DATE	BY
4	ISSUED FOR REVIEW	2024-07-08	A.S.
3	ISSUED FOR TENDER	2023-06-02	N.A.
2	ISSUED FOR TENDER	2023-05-05	N.A.
1	ISSUED FOR 50% REVIEW	2021-10-20	J.J.

CLIENT

REGIONAL MUNICIPALITY OF HALTON

PROJECT

FIRE ALARM REPLACEMENT
185 ONTARIO ST S,
MILTON

DRAWING TITLE

GROUND FLOOR
FIRE ALARM PLAN

DRAWN BY:
J.J.

CHECKED BY:
J.J.

DATE:
JAN-2022

PROJECT NUMBER:
21-097

SCALE:
1/16" = 1'-0"

DRAWING NUMBER:
E2.1C

FILE:
J:\Drawings\21-097A - Code Consultant Review of Alterade LTC - Halton Region\3-Working Documents\E2.1C FIRE ALARM GROUND FLOOR PLAN.dwg

- ① THE FIRE ALARM SYSTEM LAYOUT SHALL REMAIN AS EXISTING THROUGHOUT THE BUILDING. ALL NEW FIRE ALARM DEVICES SHALL MATCH THE EXISTING FOUND ON SITE.
- ② RE-USE THE EXISTING WIRING AND CONDUIT, INSTALL IN THE EXACT LOCATION AS THE PREVIOUS DEVICE.
- ③ ALL DOOR HOLD OPEN DEVICES SHALL RELEASE LOCALLY VIA A RELAY-BASE SMOKE DETECTOR AND VIA THE FIRE ALARM SYSTEM ACTIVATION. INSTALL THE SMOKE DETECTOR WITHIN 1500MM OF THE DOORWAY.
- ④ ALL SPRINKLER FIRE ALARM DEVICES SHALL REMAIN EXISTING THROUGHOUT THE BUILDING, TYPICAL.
- ⑤ THE BIDDING CONTRACTOR SHALL REVIEW FROM THE OWNER THE LATEST FIRE ALARM ANNUAL TEST REPORT, PREPARED BY HAMILTON FIRE CONTROL COMPANY DATED MAY 2024. THE DEVICE TYPE AND QUANTITIES OUTLINED IN THAT DOCUMENT SHALL BE ASSUMED TO BE THE FINAL COUNT OF DEVICES INSTALLED ON SITE. ALL DEVICES MAY NOT BE SHOWN ON THE DRAWING SET AND IT IS THE CONTRACTOR'S RESPONSIBILITY TO READ ALL DOCUMENTS IN ITS ENTIRETY BEFORE BIDDING.
- ⑥ ALL EXISTING FIRE ALARM DEVICES VERIFIED AT THE MAIN FIRE ALARM PANEL THAT ARE NOT SHOWN ON THE DRAWING SET SHALL BE RE-TESTED AND ALLOW FOR DEVICE DISCOVERY, AND INFORM OWNER/ENGINEER FOR FURTHER DIRECTION.
- ⑦ PROVIDE NEW FIRE ALARM ANNUNCIATOR PANEL (FAAP) WHICH SHALL BE COMPATIBLE WITH THE REMOVED MODEL AND THE EXISTING FIRE ALARM CONTROL PANEL (SIMPLEX 4100 ES). RE-USE THE EXISTING WIRING/CONDUIT AND ALL ASSOCIATED ELECTRICAL CONNECTIONS TO THE FAAP. (EXTEND OR PROVIDE NEW WIRING IF NECESSARY) THE EXISTING FIRE ALARM CIRCUITS TO THE NEW FAAP.
COORDINATE AND INFORM OWNER/ENGINEER FOR FURTHER DIRECTIONS.
- ⑧ AT THE COMPLETION OF THE PROJECT PERFORM A COMPLETE LIVE LOAD TEST ON THE FIRE ALARM SYSTEM. THE RUN-TIME SHALL CONFORM WITH CBC REQUIREMENTS AND 5537 VERIFICATION STANDARDS.



15 Foundry Street, Dundas, ON, L9H 2V6
Phone: 905-648-0373 www.martecpartners.com

15 Foundry Street, Dundas, ON, L9H 2V6
Phone: (905) 648-0373 www.marteconpartners.com

SEAL



REVIEW ALL DRAWINGS AND VERIFY ALL DIMENSIONS AT THE SITE. DO NOT SCALE THE DRAWINGS. REPORT ALL DISCREPANCIES TO THE ENGINEER BEFORE PROCEEDING WITH ANY CONSTRUCTION OR SHOP FABRICATION. ALL DRAWINGS, SPECIFICATIONS AND RELATED DOCUMENTS ARE THE COPYRIGHT PROPERTY OF "MANITEX PARTNERS" AND MUST BE RETURNED UPON REQUEST. REPRODUCTION OF DRAWINGS, SPECIFICATIONS AND RELATED DOCUMENTS IN WHOLE OR IN PART IS FORBIDDEN WITHOUT THE ENGINEER'S WRITTEN PERMISSION.

4	ISSUED FOR PERMIT	2024-07-08	A.
3	ISSUED FOR TENDER	2023-06-02	N.
2	ISSUED FOR TENDER	2023-05-05	N.
1	ISSUED FOR 50% REVIEW	2021-10-20	J.
NO.	ISSUED	DATE	B

PROJECT:
FIRE ALARM
REPLACEMENT
185 ONTARIO ST S,
MILTON

DRAWN BY: J.J.	SCALE: 1/16" = 1'-0"
CHECKED BY:	DRAWING NUMBER:

DATE: JAN-2022
PROJECT NUMBER: 21-097



NOTES:	
1.	CONFIRM F.A. ZONE IDENTITY WITH CONSULTANT/OWNER PRIOR TO PROGRAMMING.
2.	CONFIRM WITH MECHANICAL CONTRACTOR FOR EXACT THE QUANTITY AND LOCATION OF SUPERVISORY DEVICES.

- 1 THE CONTRACTOR SHALL PROVIDE DEVICES COMPATIBLE WITH THE EXISTING FIRE ALARM CONTROL UNIT - SIMPLEX 4100.
- 2 THE FIRE ALARM RISER SHOWN IS DIAGRAMMATIC ONLY. COORDINATE THE INSTALLATION WITH THE OBC AND 5524-10 STANDARDS.
- 3 ALL WIRING AND CONDUIT SHALL MEET THE MINIMUM #14 (RISER) AND #16 (PULVIN) FIRE RATING. ENSURE THAT ALL DISTANCE VOLTAGE DROP IS WITHIN THE MANUFACTURER'S ACCEPTABLE ALLOWANCE.
- 4 ALL EXISTING FIRE ALARM DEVICES VERIFIED AT THE MAIN FIRE ALARM PANEL THAT ARE NOT SHOWN ON THE DRAWINGS SHALL BE LOCATED ON SITE. ALLOW FOR DEVICE DISCOVERY, AND INFORM OWNER/ENGINEER FOR FURTHER DIRECTIONS.
- 5 PROVIDE NEW SINGLE ACTION MANUAL PULL STATIONS: C/W KEYED RESET, NO GLASS RODS AND CLEAR PROTECTIVE COVER WITHOUT SCHEDULE. TYPICAL FOR ALL.
- 6 REFER TO DRAWING E0.1C FOR THE FIRE ALARM ZONE SCHEDULE.
- 7 ALL SPRINKLER FIRE ALARM DEVICES SHALL REMAIN EXISTING THROUGHOUT THE BUILDING. TYPICAL.
- 8 THE OWNER SHALL PROVIDE ADEQUATE FIRE WATCH COVERAGE THROUGHOUT THE BUILDING WHERE FIRE ALARM DEVICES ARE NOT OPERATIONAL OR NOT VERIFIED TO 5-537 STANDARDS.



Al

REVIEW ALL DRAWINGS AND VERIFY ALL DIMENSIONS AT THE SITE. DO NOT SCALE THE DRAWINGS. REPORT ALL DISCREPANCIES TO THE ENGINEER BEFORE PROCEEDING WITH ANY CONSTRUCTION OR SHOP FABRICATION. ALL DRAWINGS, SPECIFICATIONS AND RELATED DOCUMENTS ARE THE COPYRIGHT PROPERTY OF "MANITEXCON PARTNERS" AND MUST BE RETURNED UPON REQUEST. REPRODUCTION OF DRAWINGS, SPECIFICATIONS AND RELATED DOCUMENTS IN ANY FORM OR BY ANY MEANS, WITHOUT PERMISSION, IS PROHIBITED.

4	ISSUED FOR PERMIT	2024-07-08	A.S.
3	ISSUED FOR TENDER	2023-06-02	N.A.
2	ISSUED FOR TENDER	2023-05-05	N.A.
1	ISSUED FOR 30% REVIEW	2021-10-20	JJ
NO.	ISSUED	DATE	BY

REGIONAL MUNICIPALITY
OF HALTON

PROJECT:
FIRE ALARM
REPLACEMENT
185 ONTARIO ST S,
MILTON

DRAWING TITLE:

FIRE ALARM
RISER DIAGRAM

DRAWN BY: JJ	SCALE: $1/16" = 1'-0"$
CHECKED BY: JJ	DRAWING NUMBER:
DATE JAN-2022	E3.0C
PROJECT NUMBER: 21-097	

E3.0C