



Quotation

"Manufacturers' Agents in the Air Pollution Control Industry"

To: HWDSB
Attn: Jesse Pereira
Job Name: Orchard Park SS
Dust Collector Replacement

Quotation: 25-201R

Date: January 22, 2024

Page: 1 of 2

HST#: 895157923

Qty. 1 Eurovac, Shaker Type Collector, Model PDC-900

Configuration: Dust laden air shall enter at the hopper section and move upward through the filter elements. The clean air shall move through the filter sealing section and into a clean air plenum at the top of the unit.

Construction: The housing shall be fabricated from 12 & 16 Ga. ASTM hot rolled steel for a pressure rating of -20" w.g. The hopper is bolted to the cabinet and a large filter door is provided for full and easy access to the filters.

Filters: The filter element assembly consists of several inverted "V" shaped pockets stitched into a single filter element. The air inlet side of the filter assembly is from the bottom and is fixed to the filter and shaker bar support frame.

Air to Media Ratio: The PDC-900 contains 900 Sq.Ft. of filter area providing an Air to Media ratio of 6.8:1 with an airflow of 6,170 CFM.

Filter Cleaning: The automatic shaker utilizing a 1 HP, 575/3/60 electric motor provides effective cleaning of the filter elements. A timer shall be provided to control the cleaning system to allow for a fan coast-down and operation of the shaker cleaning system.

Hopper Design: Hoppers shall be constructed of 16ga. HRS and have a 45° slope with a flanged outlet discharge. Unit shall be furnished with two (2) 55-gallon drums with dollies and solid drum connectors.

Explosion Vent with Burst Indicator shall be mounted on the side of the dust collector and designed for a K-st of 150 bar-m/sec and a dust collector P-red of 0.25 bar.

Explosion Vent Deflector shall be provided to deflect the explosion upwards.

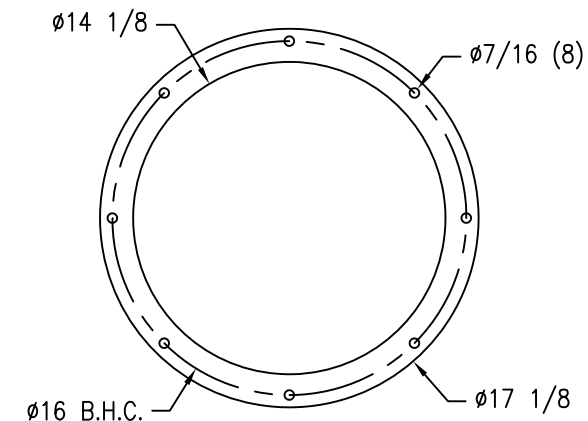
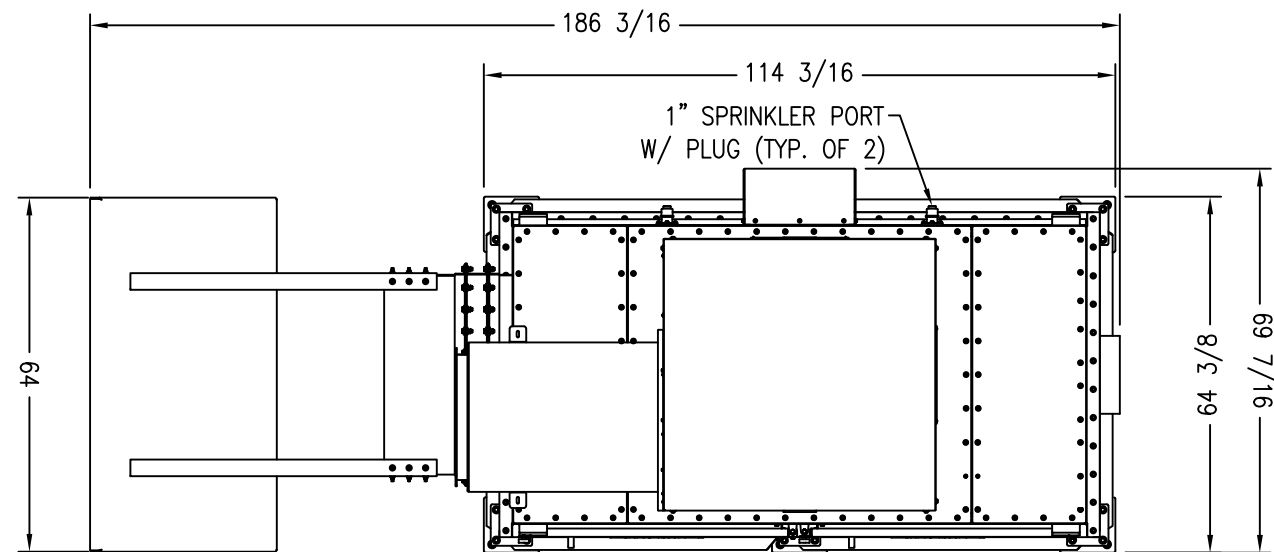
Sprinkler Ports (capped) on clean side and dirty side of dust collector housing

Terms:
FOB: Jobsite
Freight Charges are Allowed
Taxes are Extra
Payment Terms To be Discussed
Pricing Firm 30 Days until February 28, 2025
Delivery ~ 18-20 weeks After Approvals

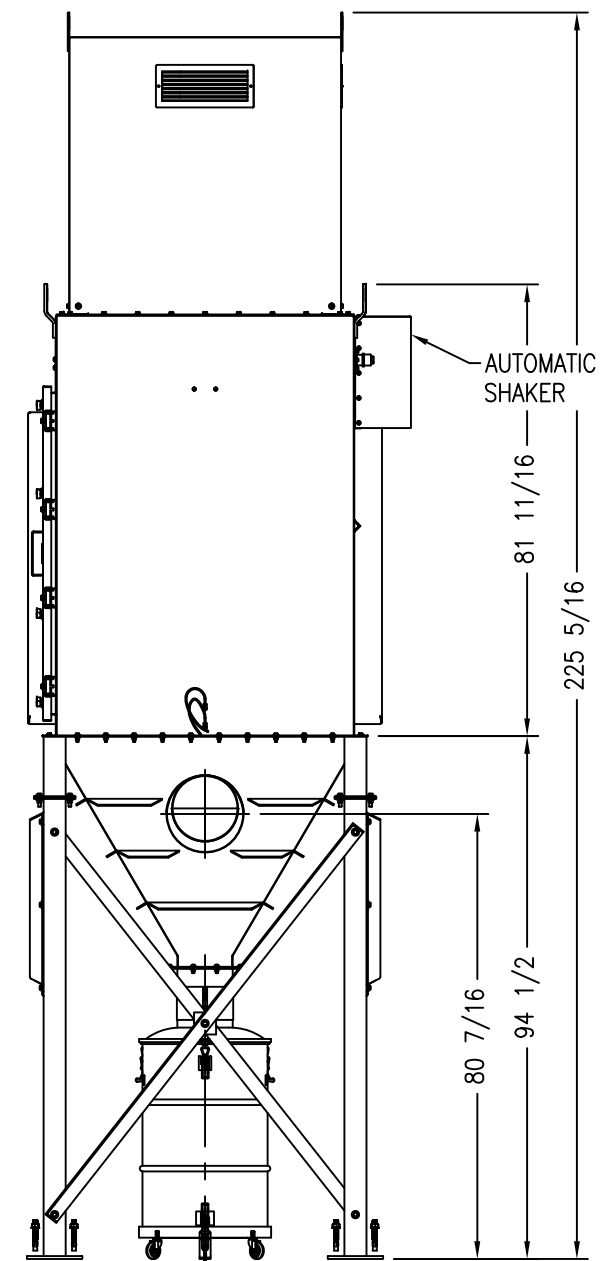
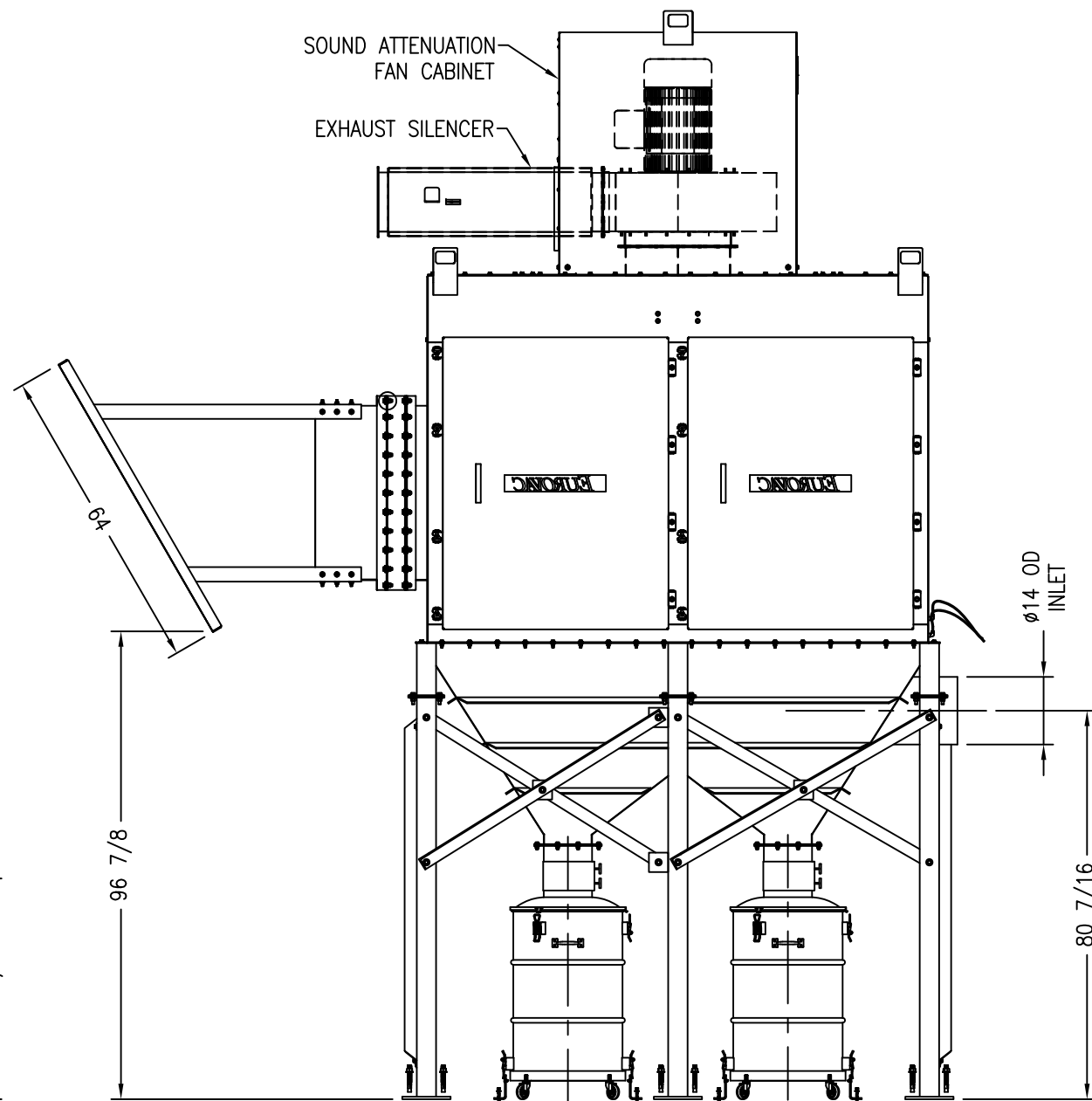
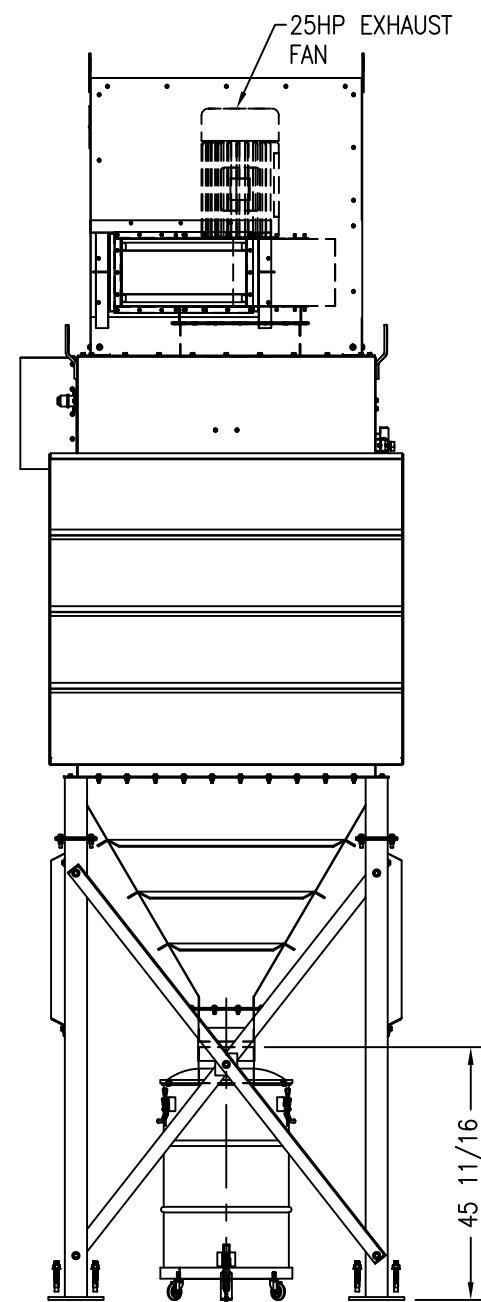
Address Order To:
Industry Air Sales Ltd.
650 Woodlawn Rd. W., Guelph, ON, N1K 1B8
Tel: 1-888-211-0171 / 519-823-8900 / Fax: 519-824-5599
Website: www.industryairsales.com
E-mail: rpoleyko@industryairsales.com
Rob Poleyko_____

-
- Qty. 1 **Exhaust Fan**, rated for **6,170 CFM @ 20" w.g.** The fan shall be top mounted and have a backward inclined steel wheel, Arrangement 4HM with vertical shaft, Class III, direct drive AMCA B spark proof design, inlet and outlet flanges, shaft seal and housing access door. It utilizes a **30 HP, 575/3/60**, direct drive, VFD compatible, TEFC high efficiency motor.
- Qty. 1 **Discharge Fan Silencer** supplied to be mounted to the discharge side of the fan and would remove noise levels to ~ 80 dBA @ 3 feet
- Qty. 1 **Control Panel** in NEMA 12 enclosure shall include a fused disconnect, step-down control transformer, circuit breakers, fuses, overload protection, emergency stop, pilot lights. Panel shall be ETL approved and shall monitor all components in the system, such as the VFD, explosion vent burst indicator, non-return valve, system pressure, filter differential, building fire alarm, spark detection system, etc.
- Qty. 1 **Acoustical Weather Cover** shall be provided over top of the fan to protect the fan/motor assembly from the elements and also to reduce radiated noise levels.
- Qty. 1 **Differential Pressure Transmitter & Magnehelic Gauge** shall be supplied on the dust collector to provide a visual display of pressure drop and to send an electronic signal back to the control panel to warn of high pressure drop readings
- Qty. 1 **Danfoss Variable Frequency Drive** shall be supplied complete with **Harmonic Filter**.
- Qty. 1 **Pressure Transmitter** shall be supplied to control the VFD and system capacity.
- Qty. 1 **Vigi-Flap Inlet Isolation Valve, 16" Diameter** is to be installed ~ 23 feet in front of the dust collector to prevent explosive forces from travelling back into the room. It shall built in compliance with NFPA-69 complete with ATEX certification. Complete with locking arm mechanism with proximity switch and a dust level sensor. To be installed in accordance to the Manufacturers recommendations.
- Qty. 1 **Spark Detection System**
- Hansentek Model AN-104, single zone control panel.
 - Two (2) infra-red direct optic detectors, complete with quick release brackets, addressable electronics and built-in sensitivity testing with test lights for each detector. NEMA 4 rated.
 - Spray Assembly/Strainer with 1" Supervised Shut-Off Valve & Flow Switch
 - Alarm Horn and Battery Back-Up
- Qty. 1 **Abort Damper, Size 22"** to be installed downstream of the fan to direct exhaust air outside should there be a fire or an explosion in the dust collector. It is complete with spring activation and a manual re-set as well as a weather cowl with birdscreen.
- Qty. 1 **Commissioning** on the dust collector and spark detection system.
-

**PRELIMINARY
ONLY**



14" O.D. INLET FLANGE DETAIL
SCALE N.T.S.



EUROVAC

TEL: 1-800-265-3878

WWW.EUROVAC.COM

REVISIONS		
REV.	DESCRIPTION	DATE

DUST COLLECTOR:

CONSTRUCTION: 10 GA. MILD STEEL SHEET WITH REINFORCED ANGLE BAR

NUMBER OF FILTER: 2 W/ 14 POCKETS (42L x 42W x 58H)

FILTRATION: 900 SQ. FT.

DUST COLLECTOR W/ Pred OF 5.0 PSI IS DESIGNED FOR Kst: 150 bar-m/sec, Pmax: 8.5 bar.

FAN SPECIFICATIONS:

AN RATING: 5,390 CFM AT 20 IN. WG.,
FAN MODEL: HDBI DIRECT DRIVE,
MOTOR: 25 HP 3/60/208V, 3,600 RPM TEFC
SOUND LEVEL: 77 dBA AT 5.00 FT. WITH SILENCER

SHAKER MOTOR: 1 HP 3/60/208V 1,800 RPM

WEIGHTS:

DUST COLLECTOR: 6900 LBS
FAN AND SILENCER: 900 LBS


1	FOR REVIEW	24/11/19
NO.	ISSUE DESCRIPTION	DATE

PROJECT: HAMILTON WENTWORTH DISTRICT SCHOOL BOARD - ORCHARD PARK SECONDARY SCHOOL

SHEET TITLE: 900 SQ. FT. BAGHOUSE DUST COLLECTOR WITH AUTOMATIC SHAKER

DRAWN BY: A.T.	CHECKED BY: R.P.	APPROVED BY: -
DATE: 24/11/19	ORDER NO.: -	
SCALE: 1:36	CONTRACT NO.: -	
SHEET: 1 OF 1	DWG. NO.: OPSS PDC 900-00	

NOTE:
• DIMENSIONS AND DESIGN ARE SUBJECT TO CHANGE AT MANUFACTURER'S DISCRETION AT ANY TIME AND WITHOUT NOTICE.
• THIS DOCUMENT CONTAINS PROPRIETARY AND CONFIDENTIAL DATA OF EUROVAC, NO DISCLOSURE REPRODUCTION OR USE OF ANY PART THEREOF, MAY BE MADE WITHOUT WRITTEN PERMISSION OF THE COMPANY.

	<p>BARRY BRYAN ASSOCIATES</p> <p>ARCHITECTS ENGINEERS PROJECT MANAGERS</p>
<p>This review by Barry Bryan Associates is for the sole purpose of ascertaining conformance with the general design concept. This review shall not mean that Barry Bryan Associates approves the detailed design inherent in the shop drawings, responsibility of which shall remain with the Contractor submitting same, and such review shall not relieve the Contractor of his/ her responsibility for errors or omissions in the shop drawings or of his/ her responsibility for meeting all the requirements of the Contract Documents. The Contractor is responsible for dimensions to be confirmed and correlated at the job site for information that pertains solely to fabrication processes or to techniques of construction and installation and for coordination of the work of all sub-trades.</p>	
<p>() REVIEWED <input checked="" type="checkbox"/> REVIEWED AS NOTED () REVISE AND RESUBMIT () NOT REVIEWED</p>	
<p>REVIEWED BY: <u>CG</u></p> <p>DATE: <u>2025-04-01</u></p>	

Note:

1. GC to review comments provided by Mechanical and Electrical Consultant.
2. GC to coordinate all works with General Contractor and all trades as required.
3. GC to confirm lead times with the client and anticipated delivery to site.



Submittal Drawings - Electrical

Manufacturers' Agents in the Air Pollution Control Industry

Customer Name: Hamilton Wentworth District School Board
Hamilton, Ontario


Customer P.O Number: PO10025557

Project: Orchard Park Secondary School
Sawdust Collection System

Engineer: Giallonardo Engineering Inc.
Woodbridge, Ontario

Equipment Selection:

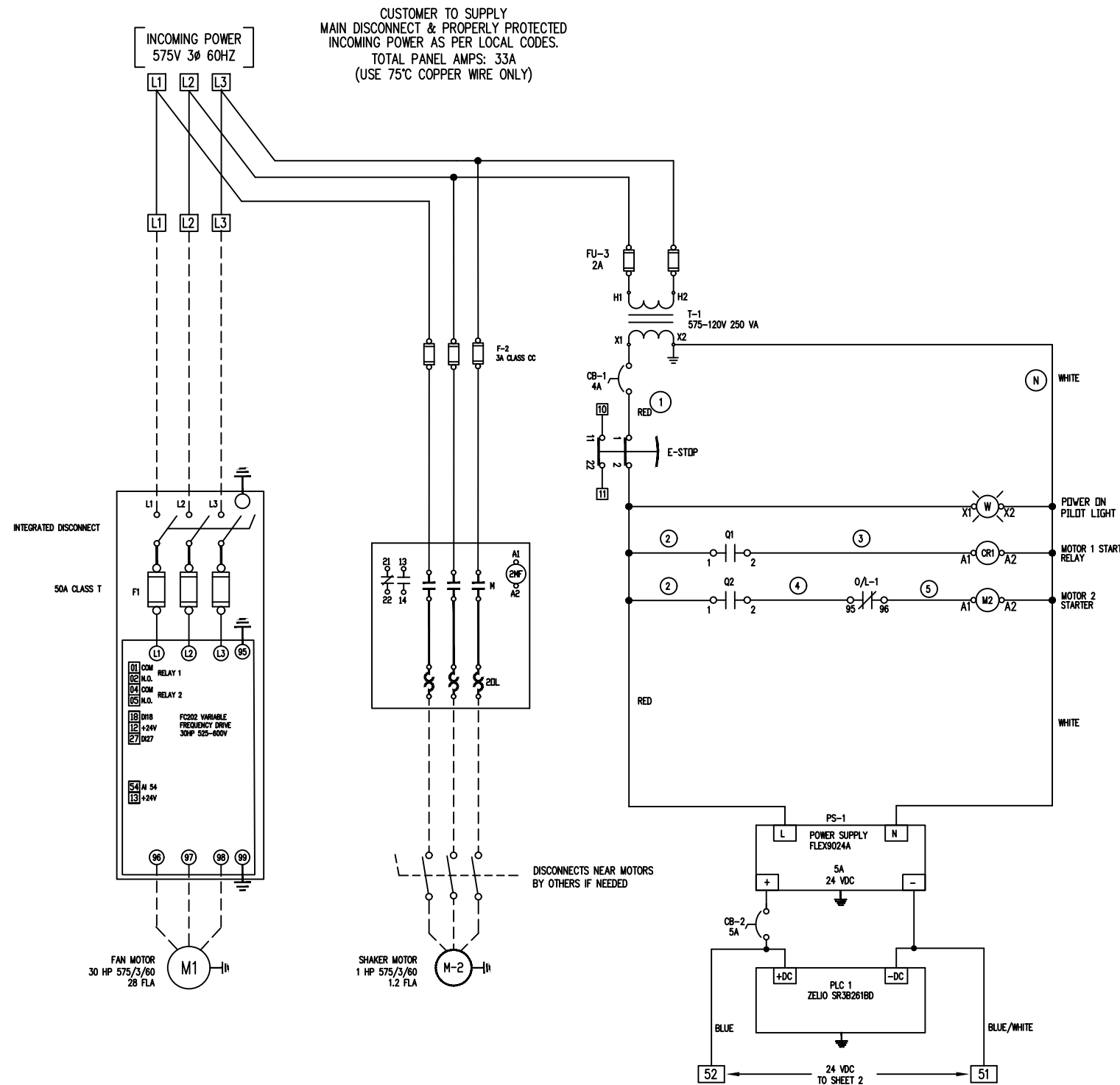
- Eurovac Shaker Dust Collector, Model PDC-900
- **ELECTRICAL DRAWINGS**

SHOP DRAWING/SUBMITTAL REVIEW	
<input type="checkbox"/> REVIEWED	<input type="checkbox"/> REVISE AND RESUBMIT
<input checked="" type="checkbox"/> REVIEWED AS NOTED	<input type="checkbox"/> REJECTED
By: _____	Date: _____
 Giallonardo Engineering Inc. (905) 265-1052 info@giallonardoeng.com	
This submittal has been reviewed for general conformance only with contract documents and specifications. Markings shall not be construed to relieve the contractor of their compliance to contract documents and specifications. Details, accuracy, dimensions, quantities and adherence to applicable codes and standards shall be the responsibility of this contractor.	

(GEI) SEE ENCLOSED COMMENTS.

(GEI) ELECTRICAL REQUIREMENTS TO BE REVIEWED BY ELECTRICAL ENGINEER.

Submission Date: March 28, 2025



Clean Air Technologies

TEL: 1-800-265-3878 WWW.EUROVAC.COM

GENERAL NOTES:

- PANEL TO BE UL508A & CSA 22.2 NO. 286
- MOTOR 1; 23 FLA SET TO %100 FLA
- MOTOR 2; 1.2 FLA SET TO 100% FLA CLASS 10
- LOCATE MAIN PRESSURE SENSOR WITH EQUIPMENT WHEN OUTSIDE

LEGEND:

- 1 DASHED LINES INDICATE REMOTE FROM PANEL.
- 2 JUMPER REQUIRED IF DEVICE DOES NOT EXIST. REMOVE JUMPER IF DEVICE TO BE INSTALLED
- 4 NUMBER INSIDE SQUARE INDICATES TERMINAL CONNECTION AND WIRE NUMBER
- 5 NUMBER INSIDE CIRCLE INDICATES WIRE NUMBER. NO TERMINAL EXISTS
- X1^o NUMBER AND/OR LETTER BESIDE CIRCLE INDICATES INTERNAL COMPONENT TERMINAL DESIGNATION

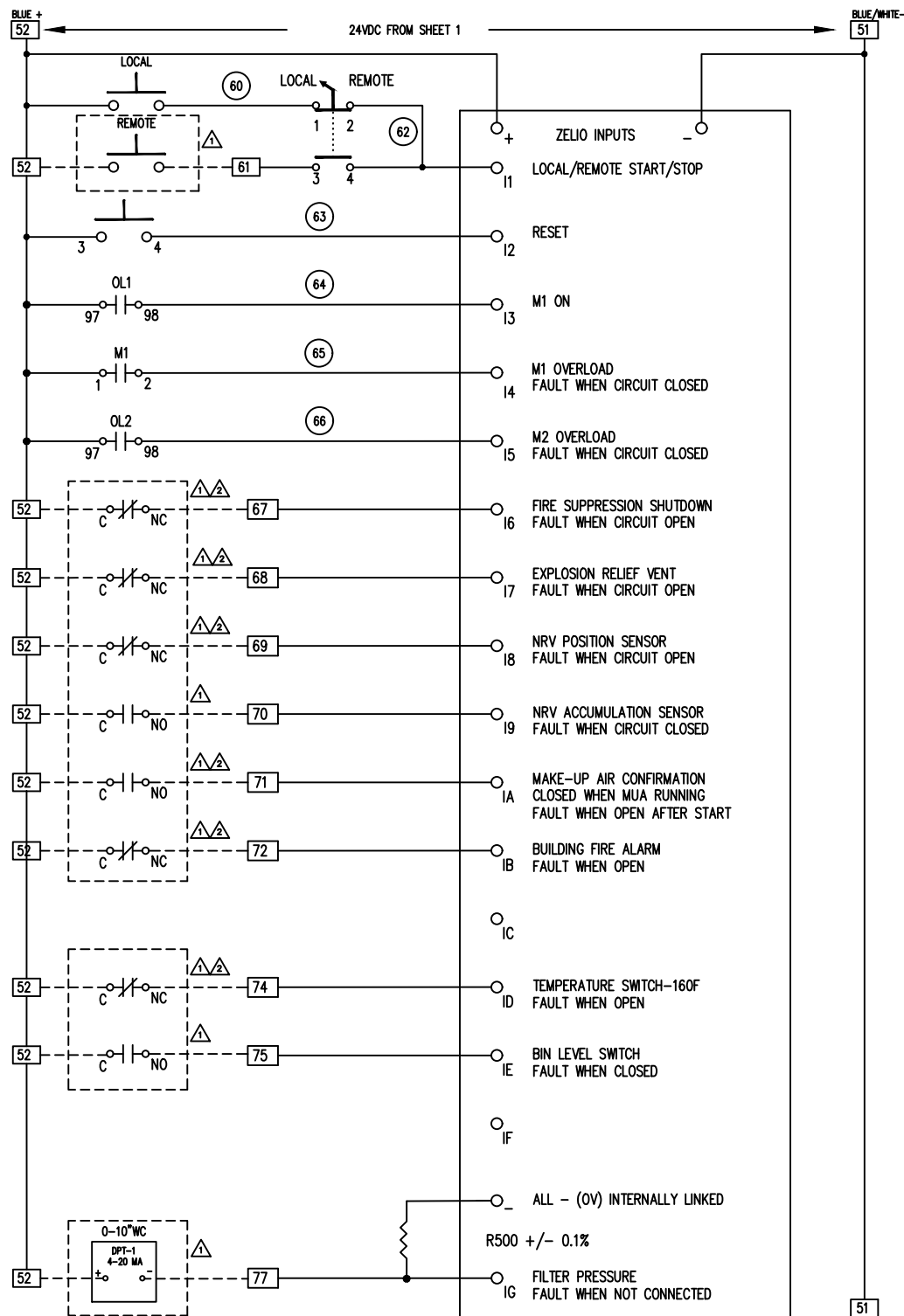
REVISIONS

REV	DESCRIPTION	DATE
1	Switch to 26IO. Add Temp switch, fire alarm inputs	2025-01-17

TITLE: SHAKER POCKET DUST COLLECTOR CONTROL PANEL
MAIN POWER/120V CONTROL

DRAWN BY: EE	REV BY: EE
CHECKED BY:	DATE: 2025-03-26
DWG. NO.: EPV15-V1A-30-575 SHEET 1 OF 6	
JOB NAME Orchard Prk/8344	AS BUILT YES

THIS DOCUMENT CONTAINS PROPRIETARY AND CONFIDENTIAL DATA OF EUROVAC. NO DISCLOSURE REPRODUCTION OR USE OF ANY PART THEREOF, MAY BE MADE WITHOUT WRITTEN PERMISSION OF THE COMPANY.



Clean Air Technologies

TEL: 1-800-265-3878

WWW.EUROVAC.COM

GENERAL NOTES:

- PANEL TO BE UL508A & CSA 22.2 NO. 286
- WIRE COLORS ON:
 - 120 VAC: RED
 - N VAC: WHITE
 - +24VDC: BLUE
 - 24VDC: BLUE/WHITE
- TIGHTENING TORQUES (LB-IN):
 - V7-W4: 5.0...5.6 LB-IN
 - V7-W16S: 18...20

LEGEND:

- DASHED LINES INDICATE REMOTE FROM PANEL.
- JUMPER REQUIRED IF DEVICE DOES NOT EXIST. REMOVE JUMPER IF DEVICE TO BE INSTALLED
- NUMBER INSIDE SQUARE INDICATES TERMINAL CONNECTION AND WIRE NUMBER
- NUMBER INSIDE CIRCLE INDICATES WIRE NUMBER. NO TERMINAL EXISTS
- NUMBER AND/OR LETTER BESIDE CIRCLE INDICATES INTERNAL COMPONENT TERMINAL DESIGNATION

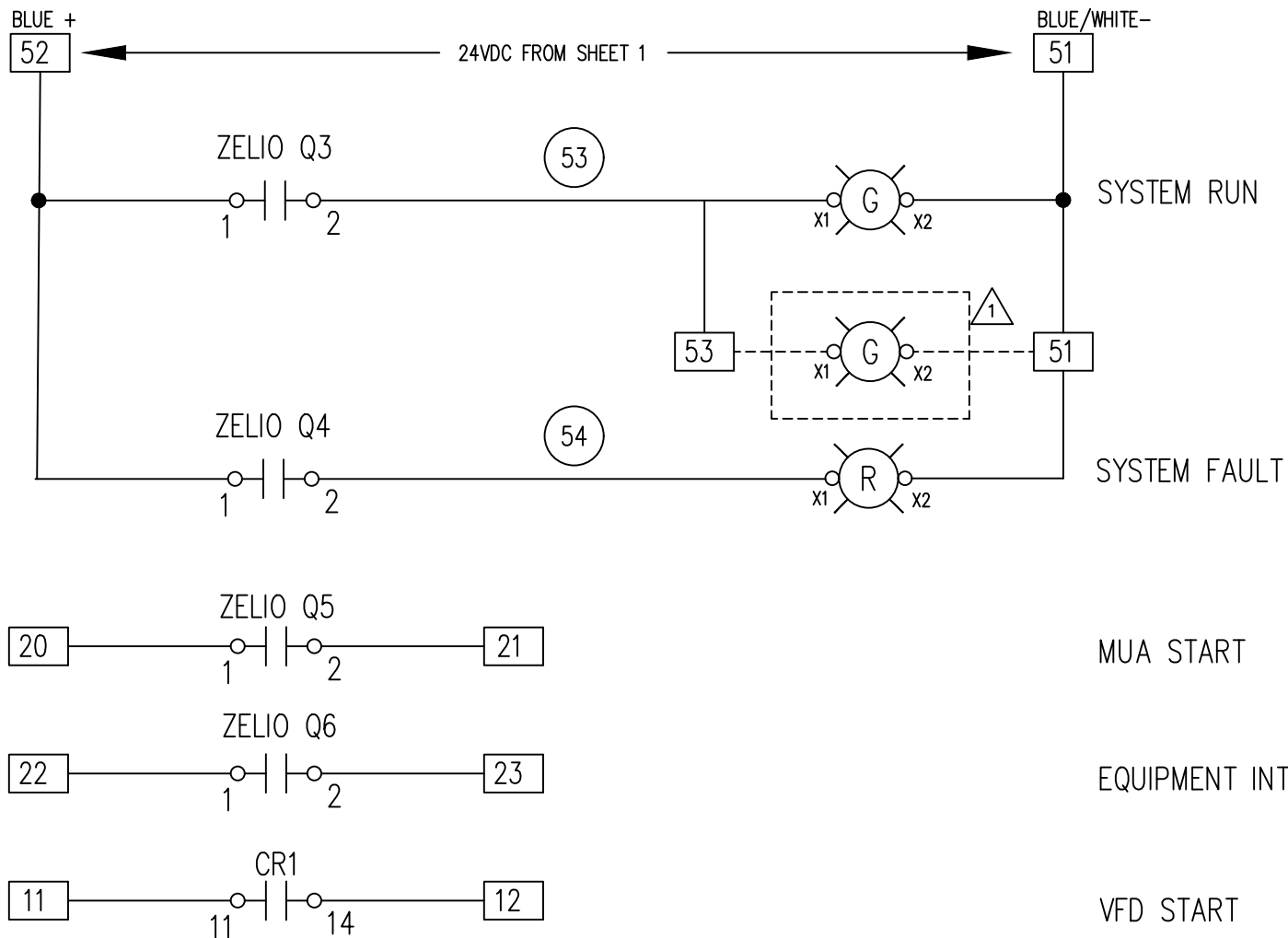
REVISIONS

REV	DESCRIPTION	DATE
1	Switch to 26IO. Add Temp switch, fire alarm inputs	2025-01-17

TITLE: SHAKER POCKET DUST COLLECTOR CONTROL PANEL
24V INPUTS

DRAWN BY: EE	REV BY:
CHECKED BY: EE	DATE: 2025-03-26
DWG. NO.: EPV15-V1A-30-575 SHEET 2 OF 6	
JOB NAME STD DWG	AS BUILT YES

THIS DOCUMENT CONTAINS PROPRIETARY AND CONFIDENTIAL DATA OF EUROVAC. NO DISCLOSURE REPRODUCTION OR USE OF ANY PART THEREOF, MAY BE MADE WITHOUT WRITTEN PERMISSION OF THE COMPANY.



Clean Air Technologies

TEL: 1-800-265-3878 www.eurovac.com

GENERAL NOTES:

- PANEL TO BE UL508A & CSA 22.2 NO. 286
- WIRE COLORS ON:
 - 120 VAC: RED
 - N VAC: WHITE
 - +24VDC: BLUE
 - 24VDC: BLUE/WHITE
- TIGHTENING TORQUES (LB-IN):
 - V7-W4: 5.0...5.6 LB-IN
 - V7-W16S: 18...20

LEGEND:

- DASHED LINES INDICATE REMOTE FROM PANEL.
- JUMPER REQUIRED IF DEVICE DOES NOT EXIST. REMOVE JUMPER IF DEVICE TO BE INSTALLED
- NUMBER INSIDE SQUARE INDICATES TERMINAL CONNECTION AND WIRE NUMBER
- NUMBER INSIDE CIRCLE INDICATES WIRE NUMBER. NO TERMINAL EXISTS
- NUMBER AND/OR LETTER BESIDE CIRCLE INDICATES INTERNAL COMPONENT TERMINAL DESIGNATION

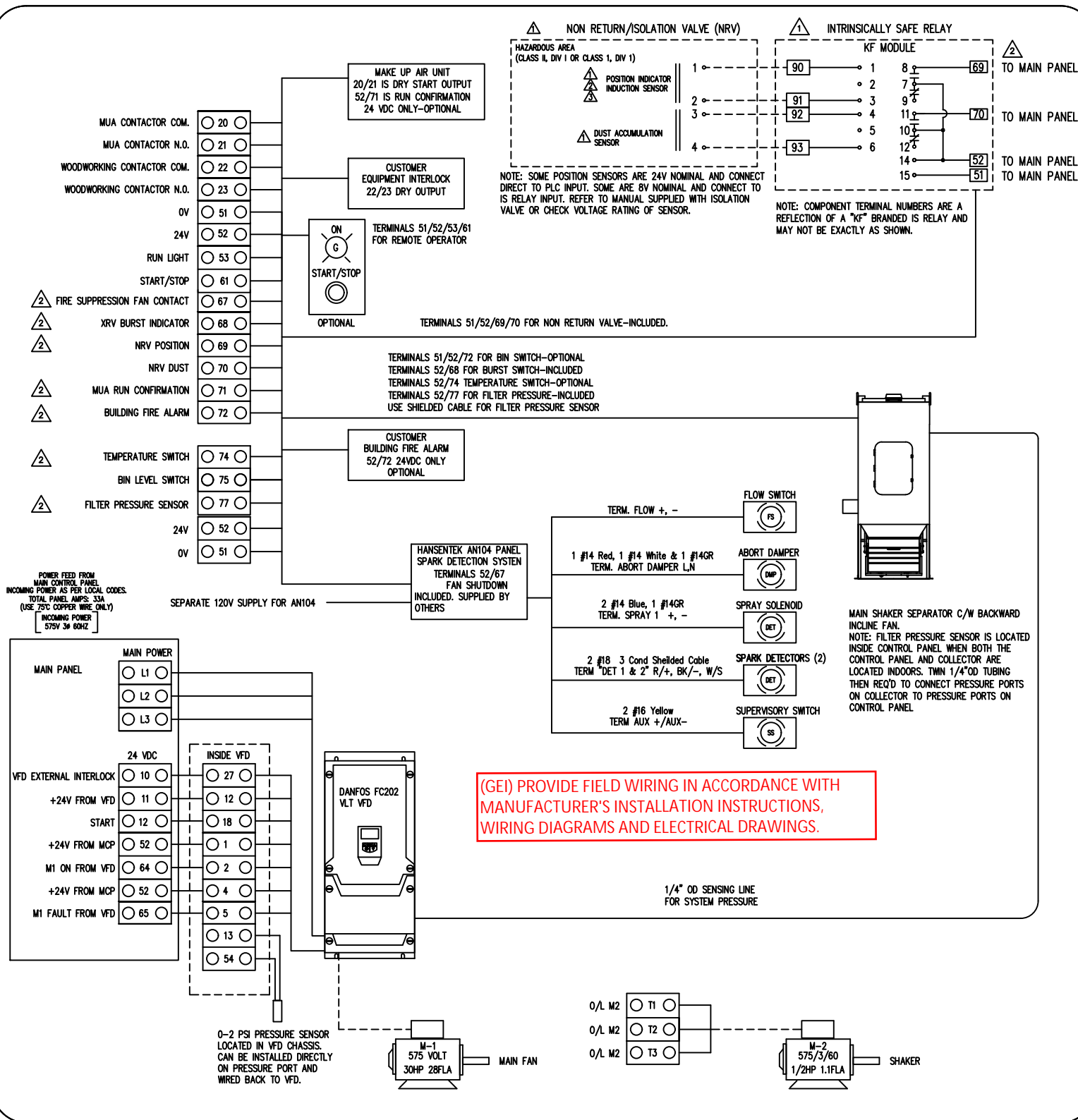
REVISIONS

REV	DESCRIPTION	DATE
1	Switch to 26IO. Add Temp switch, fire alarm inputs	2025-01-17

TITLE: SHAKER POCKET DUST COLLECTOR CONTROL PANEL
24V AND DRY OUTPUTS

DRAWN BY: EE	REV BY:
CHECKED BY: EE	DATE: 2025-03-25
DWG. NO.: EPV15-V1A-30-575 SHEET 3 OF 6	
JOB NAME STD DWG	AS BUILT YES

THIS DOCUMENT CONTAINS PROPRIETARY AND CONFIDENTIAL DATA OF EUROVAC. NO DISCLOSURE REPRODUCTION OR USE OF ANY PART THEREOF, MAY BE MADE WITHOUT WRITTEN PERMISSION OF THE COMPANY.



Clean Air Technologies

TEL: 1-800-265-3878 www.eurovac.com

GENERAL NOTES:

1. SOME NON RETURN VALVE 3 WIRE POSITION SENSORS DO NOT REQUIRE IS BARRIER RELAY
2. REMOTE START SIGNAL CAN BE MAINTAINED ON OR MOMENTARY TO START AND MOMENTARY TO STOP

LEGEND:

- 1 DASHED LINES INDICATE REMOTE FROM PANEL.
- 2 JUMPER REQUIRED IF DEVICE DOES NOT EXIST. REMOVE JUMPER IF DEVICE TO BE INSTALLED
- 4 NUMBER INSIDE SQUARE INDICATES TERMINAL CONNECTION AND WIRE NUMBER
- 5 NUMBER INSIDE CIRCLE INDICATES WIRE NUMBER. NO TERMINAL EXISTS
- X1^o NUMBER AND/OR LETTER BESIDE CIRCLE INDICATES INTERNAL COMPONENT TERMINAL DESIGNATION

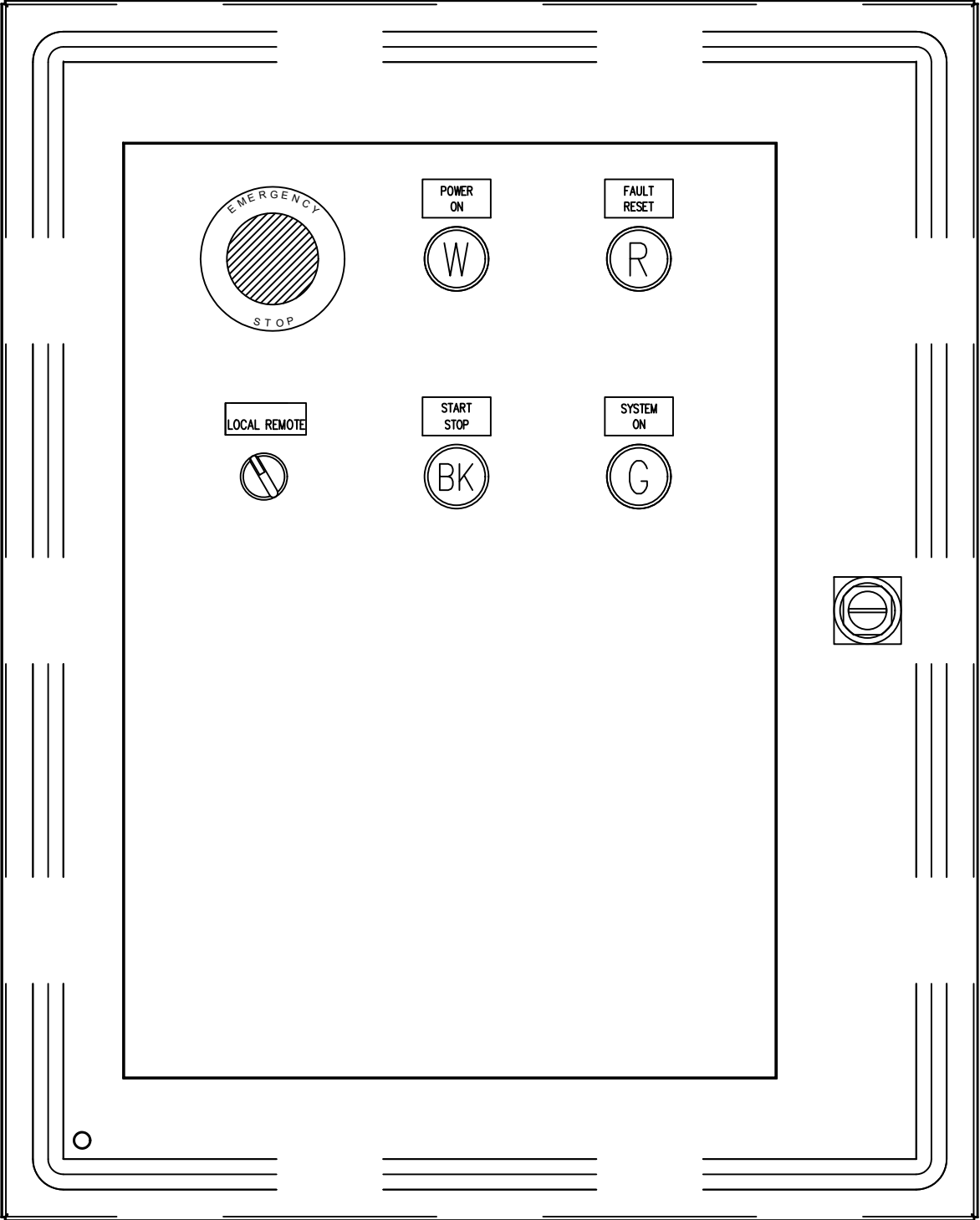
REVISIONS

REV	DESCRIPTION	DATE
1	Switch to 26IO. Add Temp switch, fire alarm inputs	2025-01-17

TITLE: SHAKER POCKET DUST COLLECTOR CONTROL PANEL
FIELD WIRING

DRAWN BY: EE	REV BY:
CHECKED BY: EE	DATE: 2025-03-26
DWG. NO.: EPV15-V1A-30-575 SHEET 4 OF 6	
JOB NAME Orchard Prk/8344	AS BUILT NO

THIS DOCUMENT CONTAINS PROPRIETARY AND CONFIDENTIAL DATA OF EUROVAC. NO DISCLOSURE REPRODUCTION OR USE OF ANY PART THEREOF, MAY BE MADE WITHOUT WRITTEN PERMISSION OF THE COMPANY.



Clean Air Technologies

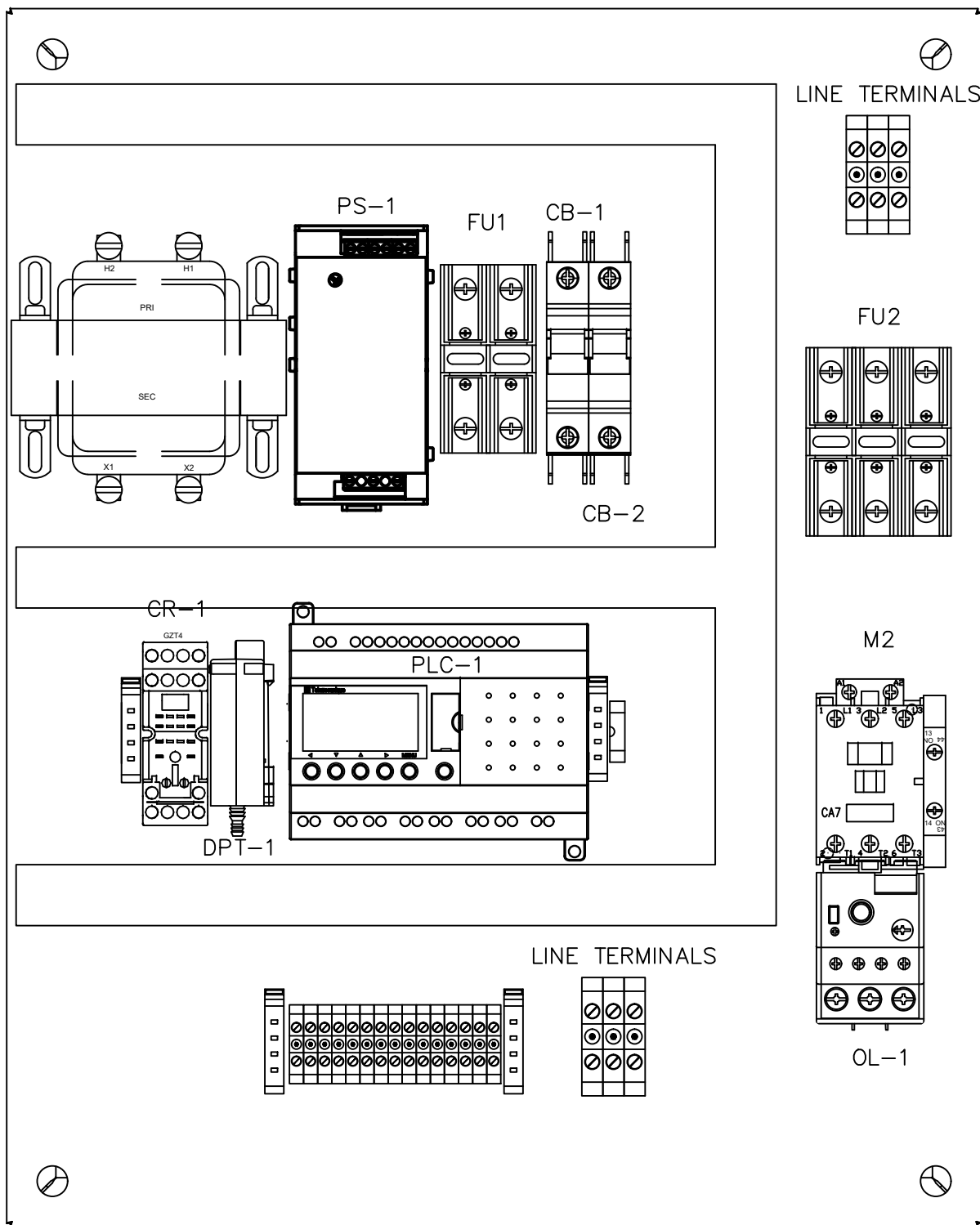
TEL: 1-800-265-3878 www.eurovac.com

GENERAL NOTES:

- 1. ENCLOSURE:
 - 1.1. ITEM NO. EN4SD20168WGY
 - 1.2. TYPE 4/12
 - 1.3. OUTSIDE DIMENSIONS: 20" X 16" X 8"
 - 1.4. MOUNTING DIMENSIONS: 18.5" x 14.5"

REVISIONS		
REV	DESCRIPTION	DATE
1	Switch to 26IO. Add Temp switch, fire alarm inputs	2025-01-17
TITLE: SHAKER POCKET DUST COLLECTOR CONTROL PANEL DOOR LAYOUT		
DRAWN BY:	EE	REV BY:
CHECKED BY:	EE	DATE: 2024-08-26
DWG. NO.:	EPV15-V1A-30-575 SHEET 5 OF 6	
JOB NAME	STD DWG	AS BUILT YES

THIS DOCUMENT CONTAINS PROPRIETARY AND CONFIDENTIAL DATA OF EUROVAC. NO DISCLOSURE REPRODUCTION OR USE OF ANY PART THEREOF, MAY BE MADE WITHOUT WRITTEN PERMISSION OF THE COMPANY.



Clean Air Technologies

TEL: 1-800-265-3878 www.eurovac.com

GENERAL NOTES:

1. SUBPANEL:
 - 1.1 PART NO. 14R1513
2. DPT-1 PRESSURE TRANSMITTER MIGHT BE INSTALLED OUTSIDE OF CONTROL PANEL.

REVISIONS

REV	DESCRIPTION	DATE
1	Switch to 2610. Add Temp switch, fire alarm inputs	2025-01-17

TITLE: SHAKER POCKET DUST COLLECTOR CONTROL PANEL LAYOUT

DRAWN BY: EE	REV BY:
CHECKED BY: EE	DATE: 2024-08-26
DWG. NO.: EPV15-V1A-30-575 SHEET 6 OF 6	
JOB NAME STD DWG	AS BUILT YES

THIS DOCUMENT CONTAINS PROPRIETARY AND CONFIDENTIAL DATA OF EUROVAC. NO DISCLOSURE REPRODUCTION OR USE OF ANY PART THEREOF, MAY BE MADE WITHOUT WRITTEN PERMISSION OF THE COMPANY.