

ELECTRICAL ADDENDUM NO. E-02

**City of Toronto Castle Wynchwood
Towers Interior & Exterior Renovation**
Job No: 24503

Montgomery Sisam Architects
Date: 2025-04-29

Total Number of Pages: 1

This Addendum becomes part of the Bid Documents and will be considered to have been included in the Tender. Additions, deletions, and revisions shall be incorporated in the Bid Documents as hereinafter described.

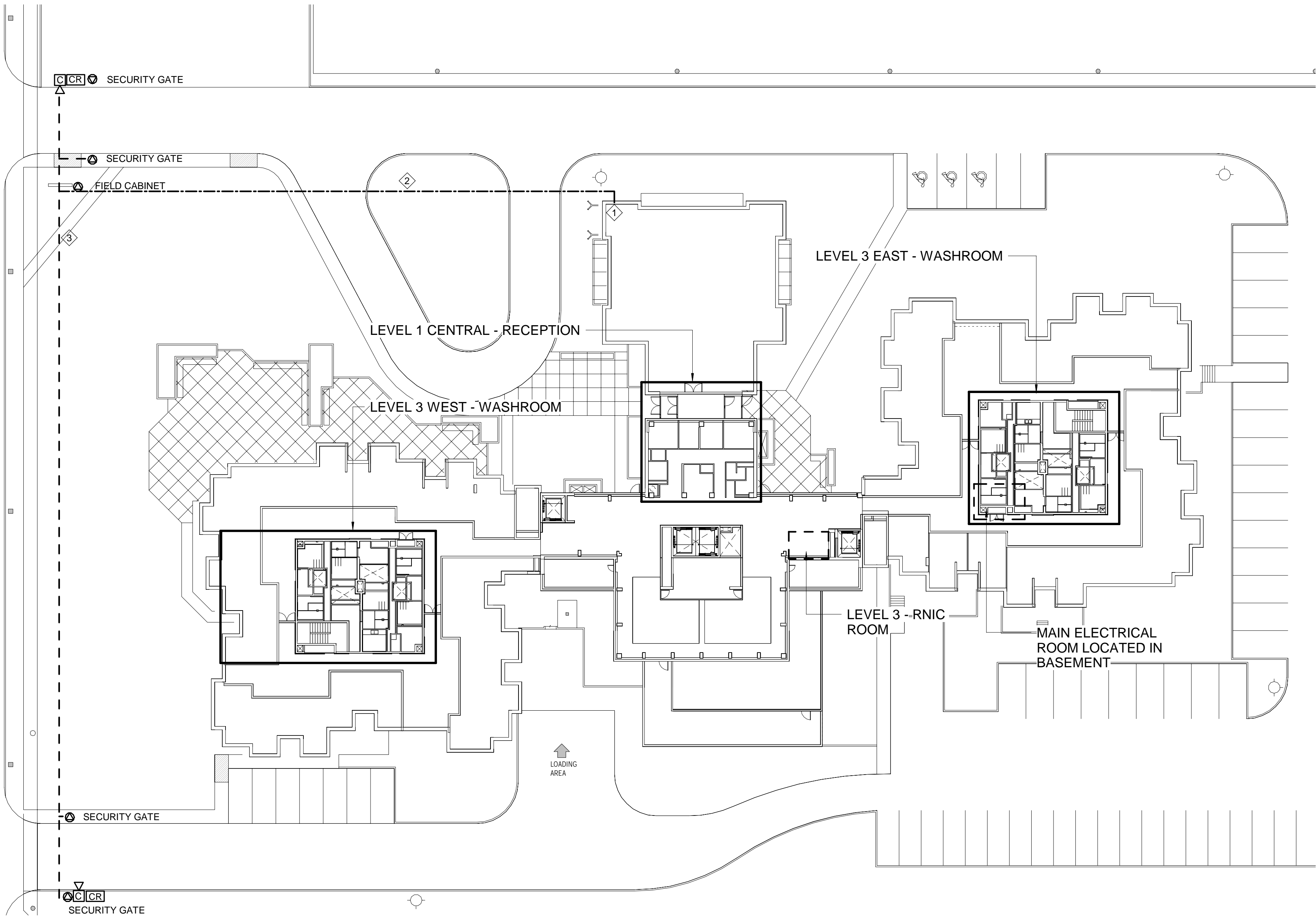
1.0 DRAWINGS:**1.1 E100**

1.1.1 Power conduit for security gates increased in size to 2.5".

TOTAL NUMBER OF PAGES
END OF **ELECTRICAL** ADDENDUM NO. E -02

Autodesk Docs/21503.F03 - COT CMT121503.F03_COT CMT_CEL_ELEC_v23.rvt

4/29/2025 3:22:49 PM



KEYNOTES (SHOWN AS ♦) E100

No.	Description
1	EXTEND CONDUITS IN BASEMENT. RUN POWER CONDUIT TO MAIN ELECTRICAL ROOM, AND DATA CONDUIT TO CLOSEST TELECOM CLOSET.
2	PROVIDE 2X CONDUITS BETWEEN BUILDING AND FIELD CABINET. ONE (1) 2.5" CONDUIT FOR POWER, ONE (1) 2" CONDUIT FOR DATA
3	PROVIDE 2X CONDUITS BETWEEN EACH SECURITY GATE AND THE FIELD CABINET. ONE (1) 2.5" CONDUIT FOR POWER, ONE (1) 2" CONDUIT FOR DATA

GENERAL NOTES

1. PROVIDE DEDICATED 15A, 120V CIRCUIT TO EACH SECURITY GATE AND FIELD CABINET. CONNECT TO EXISTING POWER PANEL IN MAIN ELECTRICAL ROOM.
2. REFER TO SECURITY GATE DETAILS ON SHEET E903 FOR MORE CONDUIT AND WIRING INFORMATION

1
E100

SITE PLAN - ELECTRICAL SCOPE OF WORK

1 : 300

Montgomery Sisam Architects Inc.

197 Spadina Avenue, Toronto, Ontario M5T 2C8
montgomerysisam.com Tel 416.364.8079 Fax
416.364.7723

MontgomerySisam

CROSSEY
ENGINEERING
A Salas O'Brien Company

2255 Sheppard Ave East
Suite E-331
Toronto, ON M2J 4Y1
416.497.3111 www.cel.ca

PROJECT

NORTH

9	2025-04-29	ISSUED FOR ADDENDUM E-02	MB
7	2024-12-16	ISSUED FOR TENDER	MB
6	2024-11-08	ISSUED FOR PERMIT	MB
5	2024-10-10	ISSUED FOR CLIENT REVIEW	MB
4	2024-09-30	ISSUED FOR 100% CD	MB
3	2024-08-23	ISSUED FOR COORDINATION	MB
2	2024-08-08	ISSUED FOR COORDINATION	MB
1	2024-06-26	ISSUED FOR COORDINATION	MB
#	Date:	Revision:	By
revisions			

All drawing and specifications are the property of the engineer. The contractor shall verify all dimensions and information on site and report any discrepancy to engineer before proceeding.

**CASTLEVIEW
WYCHWOOD TOWERS**

351 CHRISTIE ST, TORONTO, ONTARIO M6G 3C3

**SITE PLAN - ELECTRICAL
SCOPE OF WORK**

Drawn by: MB
Reviewed by: CD
MSA Job Number: 21503.F03
CEL Job Number: 24503
Plot Date: 2025-04-29

Drawing Number:

E100