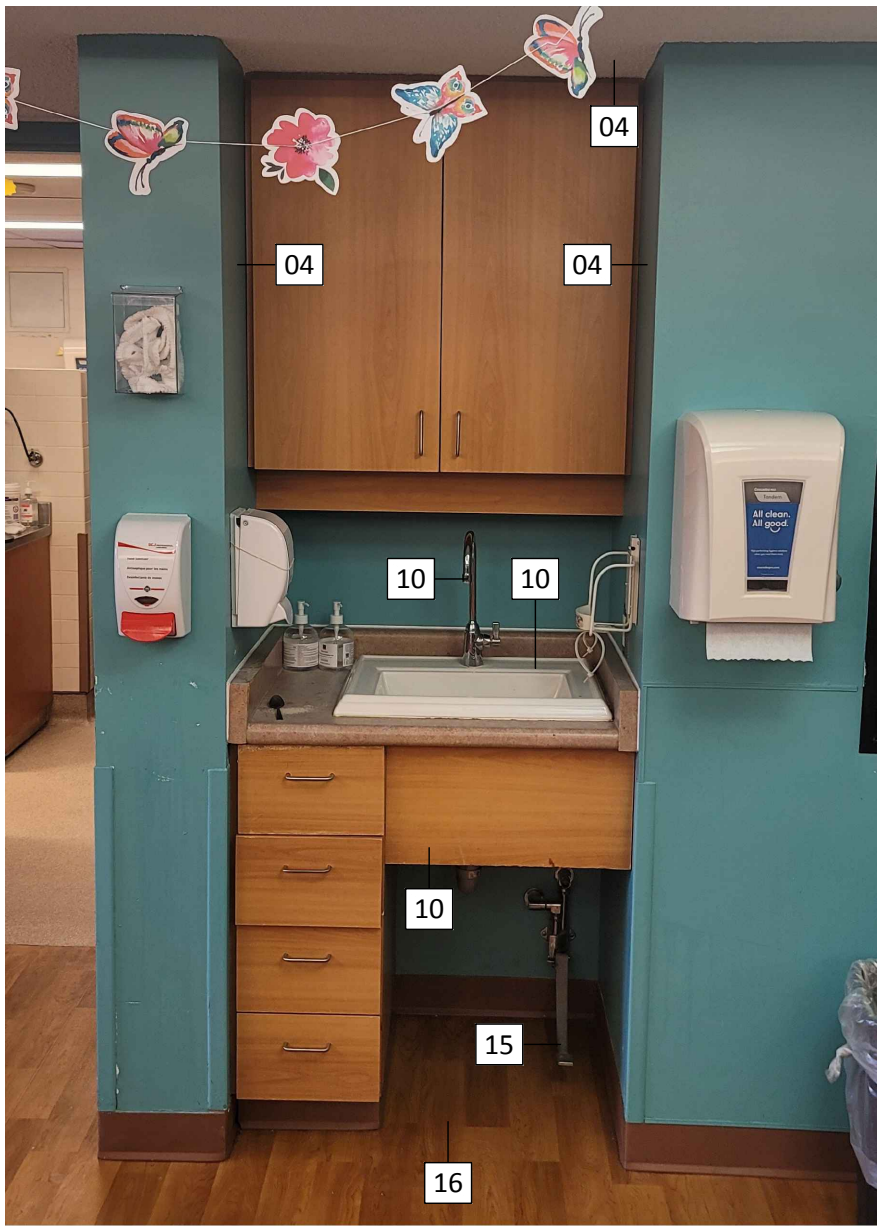


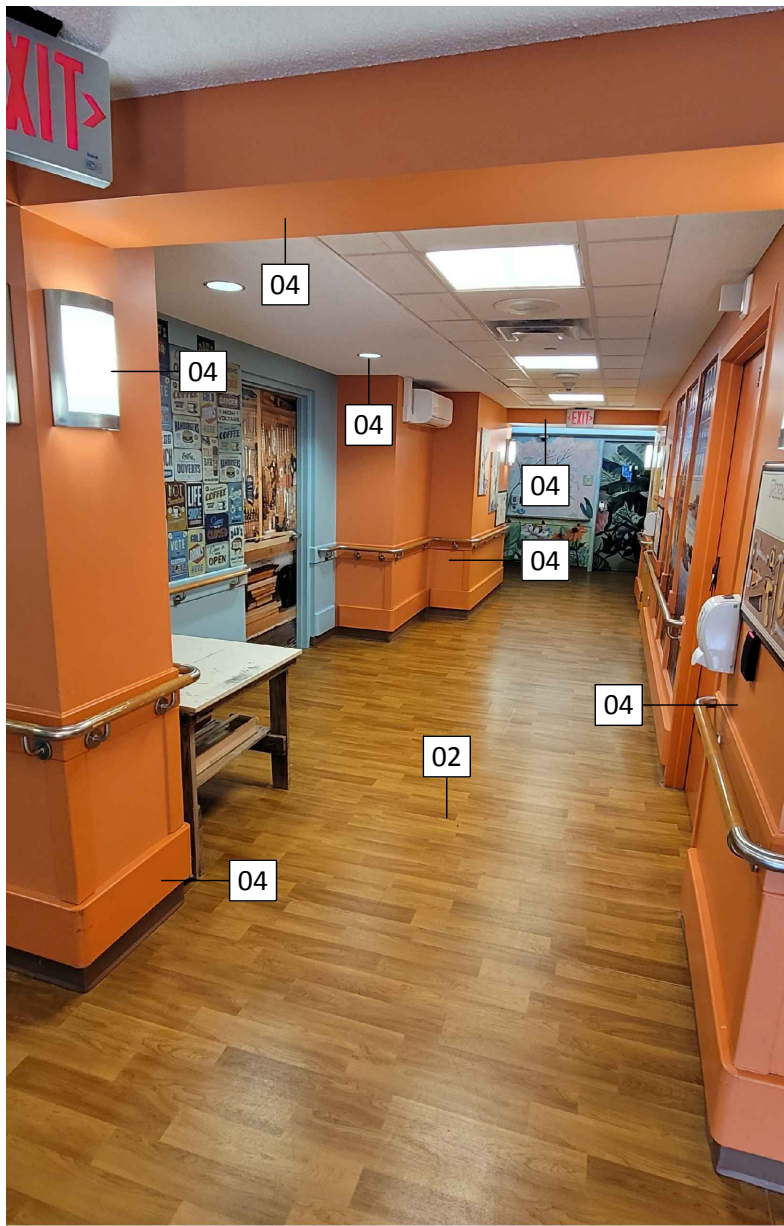
1ST FLOOR DINING / ACTIVITY RM



2ND-4TH FL TYP SERVERY LOOKING WEST

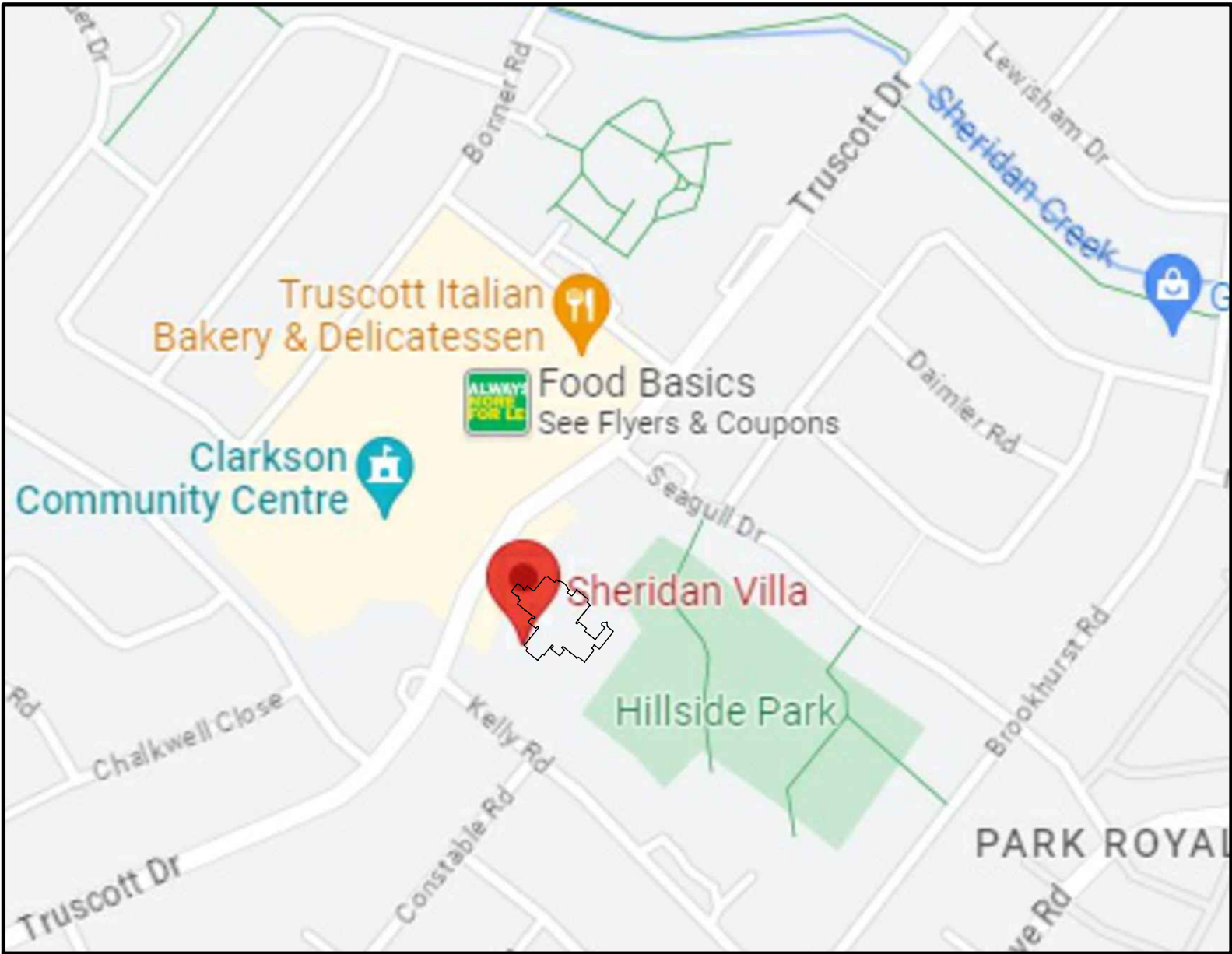


WASH SINK LOOKING WEST



CORRIDOR LOOKING NORTH

ABBREVIATIONS	
FL	FLOOR
TYP	TYPICAL
W	EXISTING WASHER
D	EXISTING DRYER
M	MICROWAVE
R	RANGE STOVE
F	FRIDGE / FREEZER
PT	PAINTED
WD	WOOD
CT	COUNTER TOP
SS	STAINLESS STEEL
SSR	SOLID SURFACE
PLA	POLYLAMINATE
CRT	CERAMIC TILE
GWB	GYPSUM WALL BOARD
PD	PAPER DISPENSER
SD	SOAP DISPENSER
GFI	GFCI SWITCH OUTLET
DW	DISHWASHER
F.D.	FLOOR DRAIN
EQ.	EQUAL
N.I.C.	NOT IN CONTRACT
MRR.	MIRRORED
P.S.	PRESSED STEEL
G.C.	GENERAL CONTRACTOR
FIN.	FINISHED
AFF	ABOVE FINISHED FLOOR
DR	DUPLEX RECEPTACLE
V	VALVE
PT	PRESSURE TANK
HR	HOSE REEL
GFCI	GROUND FAULT CIRCUIT INTERRUPTER



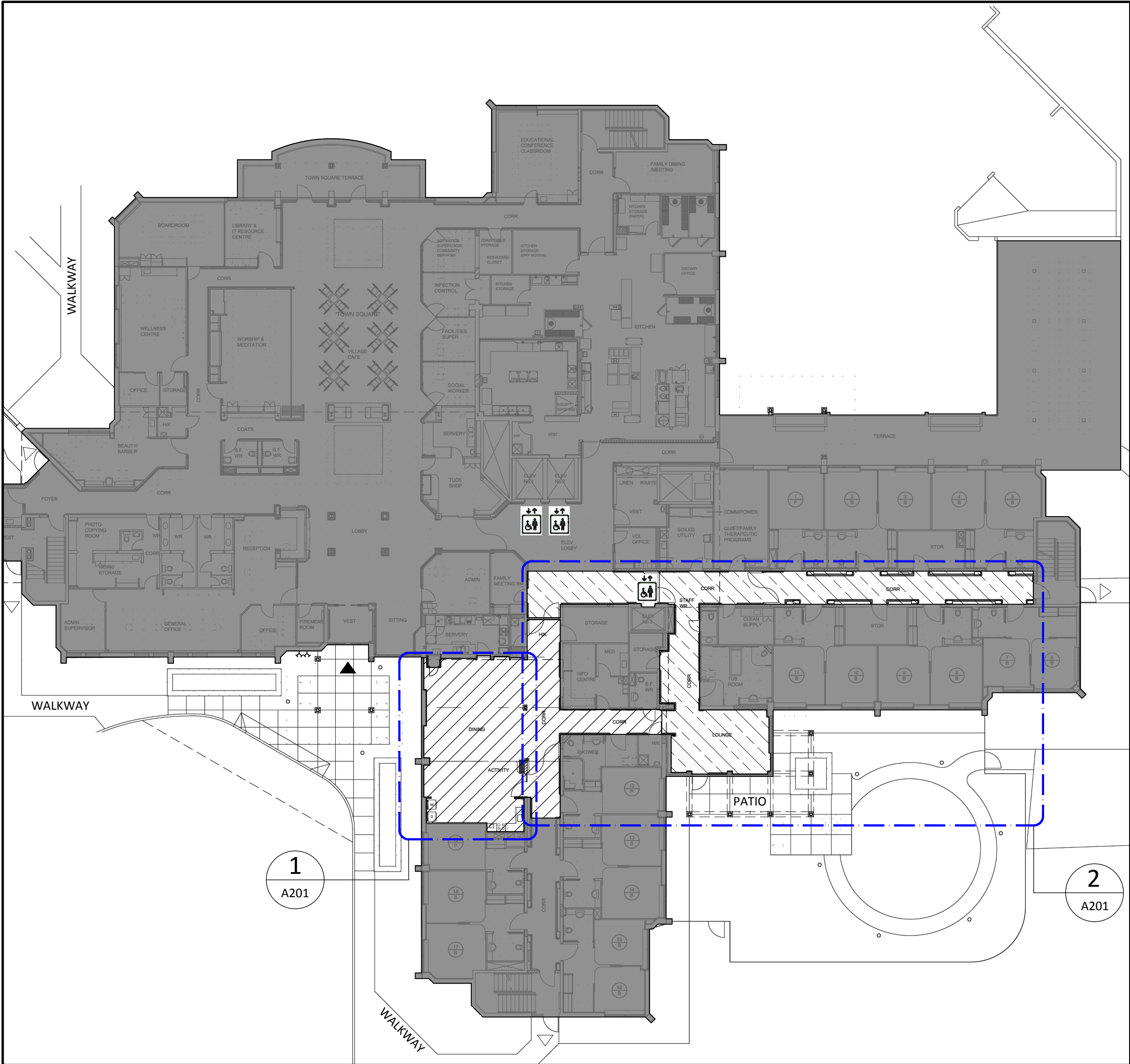
KEY PLAN
SCALE: 1:5000

LEGEND	
	PHASE 1
	PHASE 2
	AREA NOT IN CONTRACT
	ENTRANCE
	EXIT
	ELEVATOR
	KEYNOTE TAG
	ROOM NAME & NUMBER
	MATERIAL TAG
	FLOOR TRANSITION

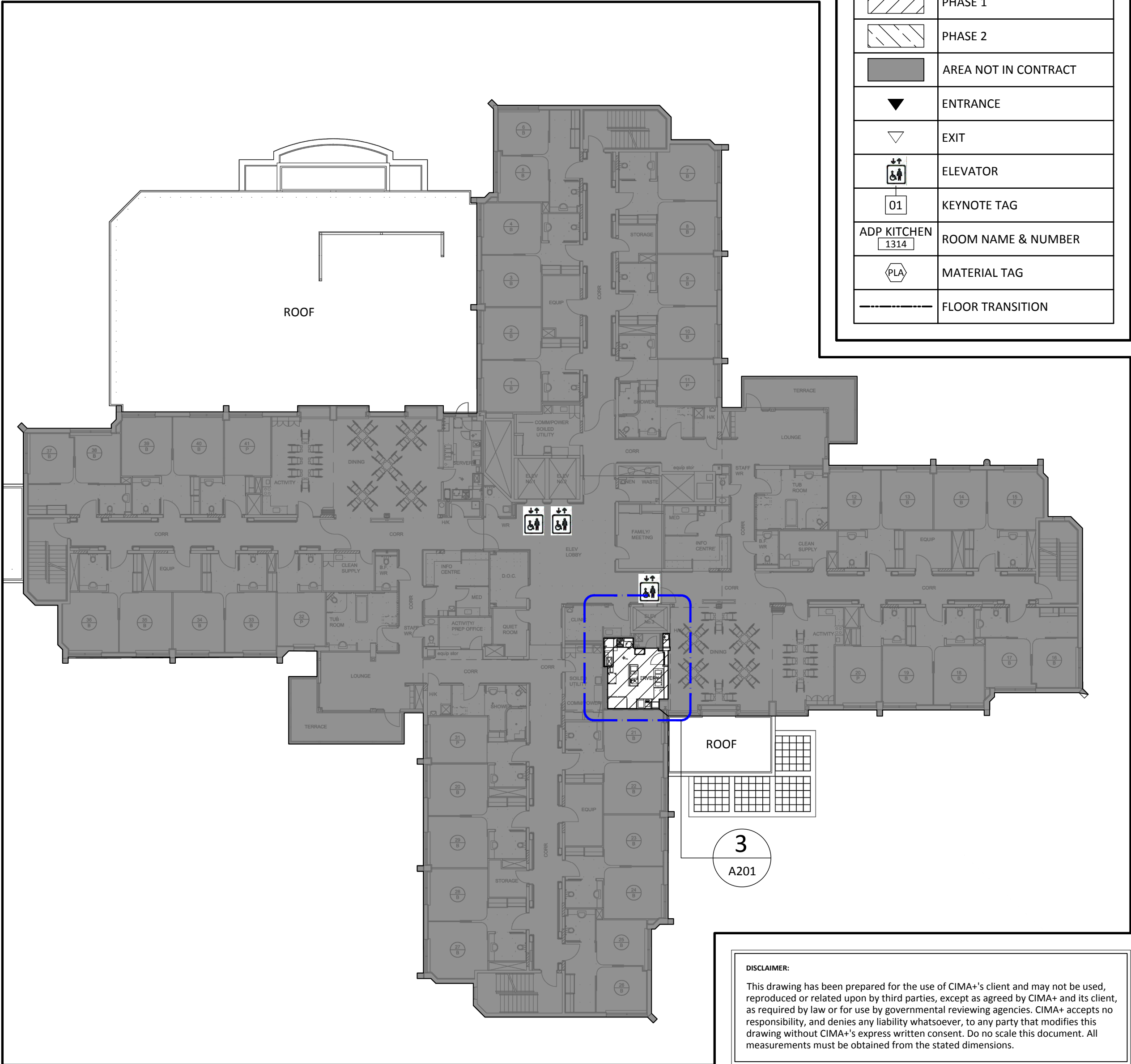
REVISIONS				
NO.	DATE	DESCRIPTION	BY	APVD
B	2023-10-04	100% ISSUED FOR TENDER	J.B.	L.C.
A	2023-09-08	90% ISSUED FOR TENDER - CLIENT REVIEW	J.B.	M.B.

KEY NOTES

- REMOVE LAMINATE FLOOR AND REPAIR / LEVEL CONCRETE. REPLACE WITH NEW MARMOLEUM FLOORING.
- REMOVE LAMINATE FLOOR AND REPAIR / LEVEL CONCRETE. REPLACE WITH NEW LAMINATE FLOORING.
- CABINETS AND MILLWORK TO REMAIN. CUT FLOOR AT TOE / BASE BOARD AND REPAIR AS REQUIRED.
- WALL / CABINET / FLOORING / DOOR / FIXTURE / APPLIANCE / CEILING BULKHEAD TO REMAIN.
- REMOVE AND REBUILD CABINET AND SHELF.
- REMOVE CABINETS AND COUNTER, INCLUDING STEEL.
- NEW STAINLESS STEEL COUNTER / SHELVING.
- REMOVE PRESSURE TANK. RELOCATE MICROWAVE ON SHELF.
- CABINET BASE TO REMAIN. REFACE WITH POLYLAMINATE DOORS AND SOLID SURFACE / STAINLESS STEEL COUNTER.
- NEW MILLWORK, LAMINATE COUNTER, SINK, AND FAUCET. SEE NOTES FOR SK-1 AND SK-2 ON DRAWING A301.
- REMOVE AND REPLACE EQUIPMENT FOR PLUMBING DURING CONSTRUCTION.
- REMOVE PRESSURE VALVE AND LINES TO HOSE REEL ASSEMBLY, CAP TEE AT CONNECTION.
- REMOVE RECEPTACLE COVER PLATES AND REINSTALL TO SUIT NEW TILE WORK.
- WATER LINE TO REMAIN. CUT TILE AROUND PIPE.
- REMOVE FOOT PEDAL, CAP IN WALL, REPAIR DRYWALL, AND REPAINT TO MATCH EXISTING.
- EXISTING LAMINATE FLOORING TO REMAIN.
- CUT WALL AT 1,385mm AFF. REPLACE TILES WITH COMPLEMENTARY COLOURS. REMOVE AND REINSTALL CORNER GUARDS. NEW OUTLETS TO HAVE GFCI SWITCH.
- PROVIDE NEW DRAIN GRATE FOR EXISTING FLOOR DRAIN. SITE VERIFY EXISTING SIZE AND TYPE. COVER AND PROTECT DURING CONSTRUCTION.
- REMOVE AND REINSTALL PLUMBING FIXTURES. RECONNECT TO EXISTING SERVICES. CLEAN EXISTING HUB DRAIN. COVER AND PROTECT DURING CONSTRUCTION.
- REMOVE EXISTING DISHWASHING EQUIPMENT AND RECONNECT TO EXISTING SERVICES. REGION OF PEEL / G.C. TO COORDINATE WITH PLUMBING CONTRACTOR.

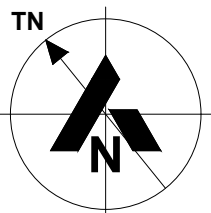


1 1ST FLOOR PLAN
A101 SCALE: 1:250



2 2ND-4TH TYPICAL FLOOR PLAN
A101 SCALE: 1:250

DISCLAIMER:
This drawing has been prepared for the use of CIMA+'s client and may not be used, reproduced or related upon by third parties, except as agreed by CIMA+ and its client, as required by law or for use by governmental reviewing agencies. CIMA+ accepts no responsibility, and denies any liability whatsoever, to any party that modifies this drawing without CIMA+'s express written consent. Do no scale this document. All measurements must be obtained from the stated dimensions.



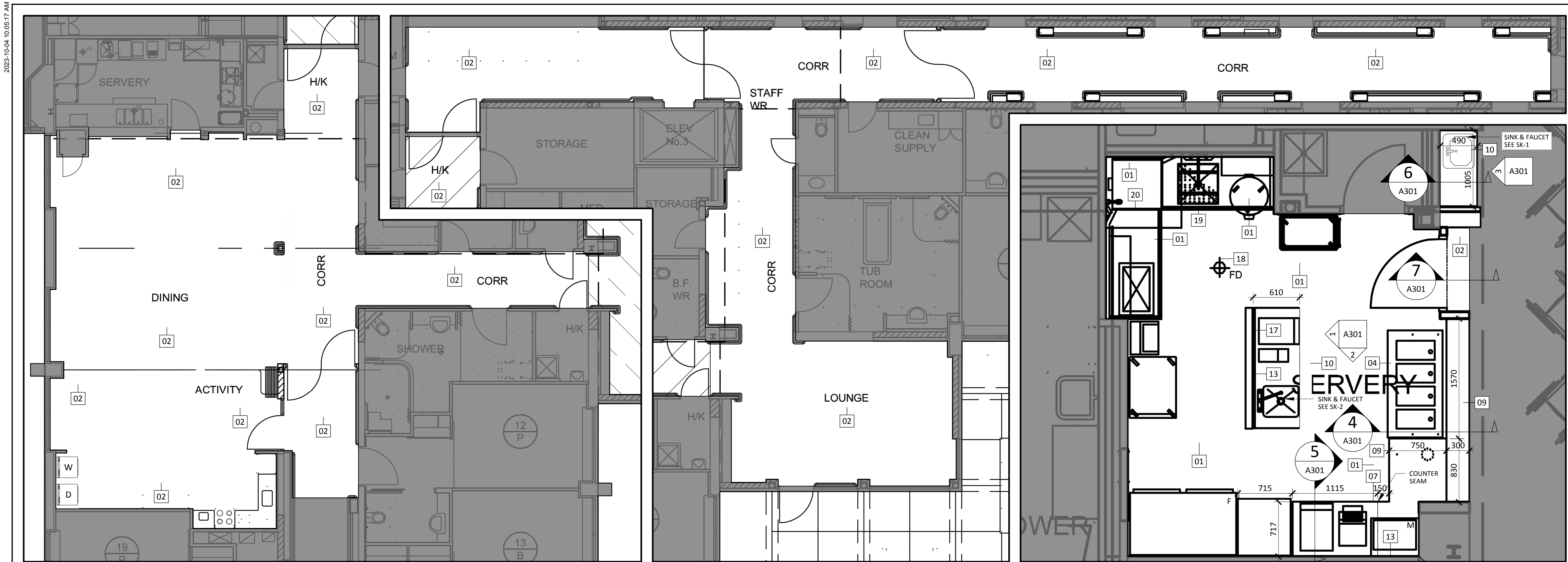
415 BASELINE ROAD WEST, 2ND FLOOR
BOWMANVILLE, ON L1C 5M2
CANADA
www.cima.ca



SHERIDAN VILLA LTC

ARCHITECTURAL
PROJECT LOCATION & KEY PLAN

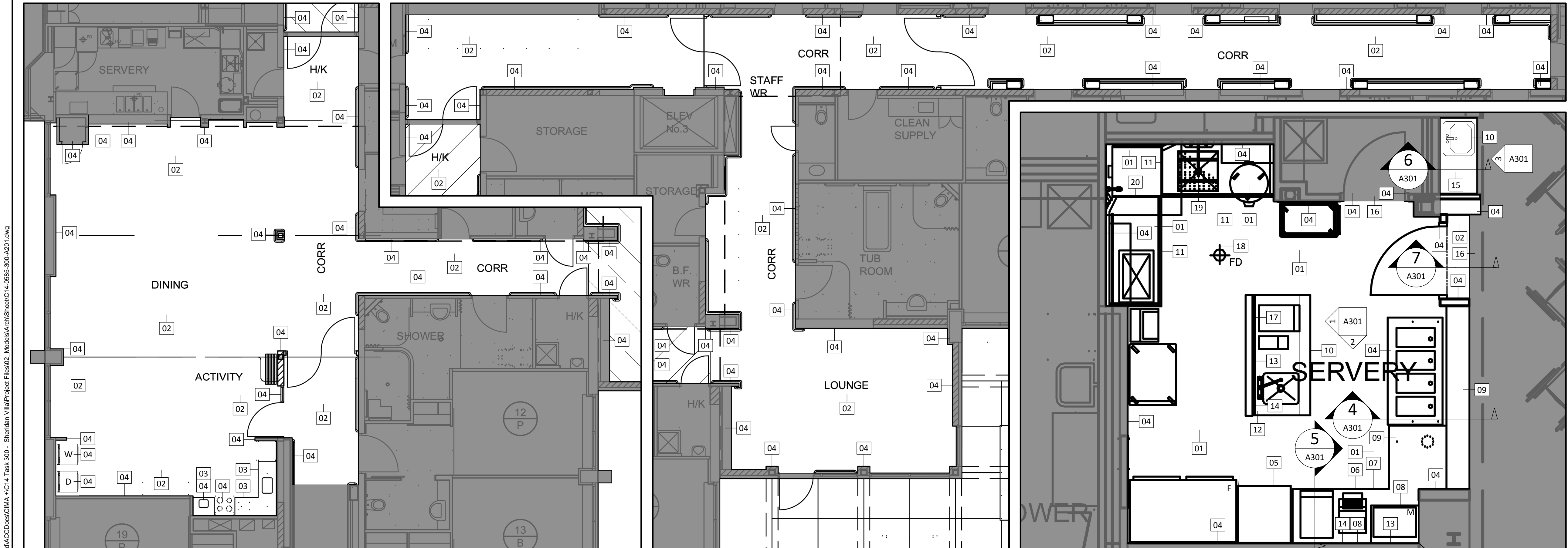
Dwg No.	A101	Area	Z-11	Project No.	C14-0585-300
Checked by	M.B.	Drawn by	J.B.	Plan No.	
Date	JULY 14, 2023	Sheet	1 of 1		



4 PHASE 1 - 1ST FLOOR PROPOSED PLAN
A201 SCALE: 1:75

5 PHASE 2 - 1ST FLOOR PROPOSED PLAN
A201 SCALE: 1:75

6 PHASE 1 - 2ND-4TH FL SERVERY PROPOSED PLAN
A201 SCALE: 1:30



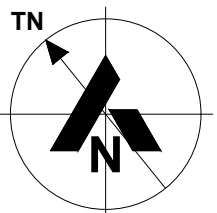
1 PHASE 1 - 1ST FLOOR REMOVALS PLAN
A201 SCALE: 1:75

2 PHASE 2 - 1ST FLOOR REMOVALS PLAN
A201 SCALE: 1:75

3 PHASE 1 - 2ND-4TH FL SERVERY REMOVALS PLAN
A201 SCALE: 1:30

REVISIONS				
NO.	DATE	DESCRIPTION	BY	APVD
B	2023-10-04	100% ISSUED FOR TENDER	J.B.	L.C.
A	2023-09-08	90% ISSUED FOR TENDER - CLIENT REVIEW	J.B.	M.B.

DISCLAIMER:
This drawing has been prepared for the use of CIMA+'s client and may not be used, reproduced or related upon by third parties, except as agreed by CIMA+ and its client, as required by law or for use by governmental reviewing agencies. CIMA+ accepts no responsibility, and denies any liability whatsoever, to any party that modifies this drawing without CIMA+'s express written consent. Do no scale this document. All measurements must be obtained from the stated dimensions.



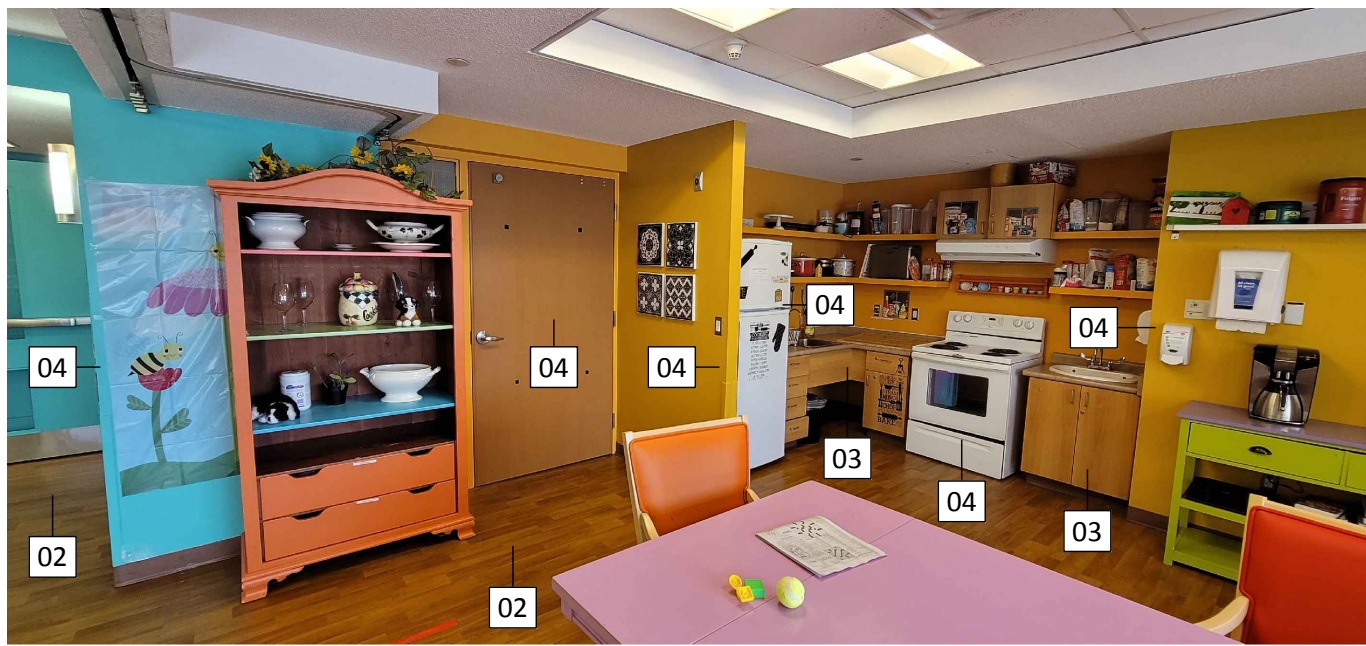
415 BASELINE ROAD WEST, 2ND FLOOR
BOWMANVILLE, ON L1C 5M2
CANADA
www.cima.ca



SHERIDAN VILLA LTC

ARCHITECTURAL
DEMOLITION & PROPOSED FLOOR PLANS

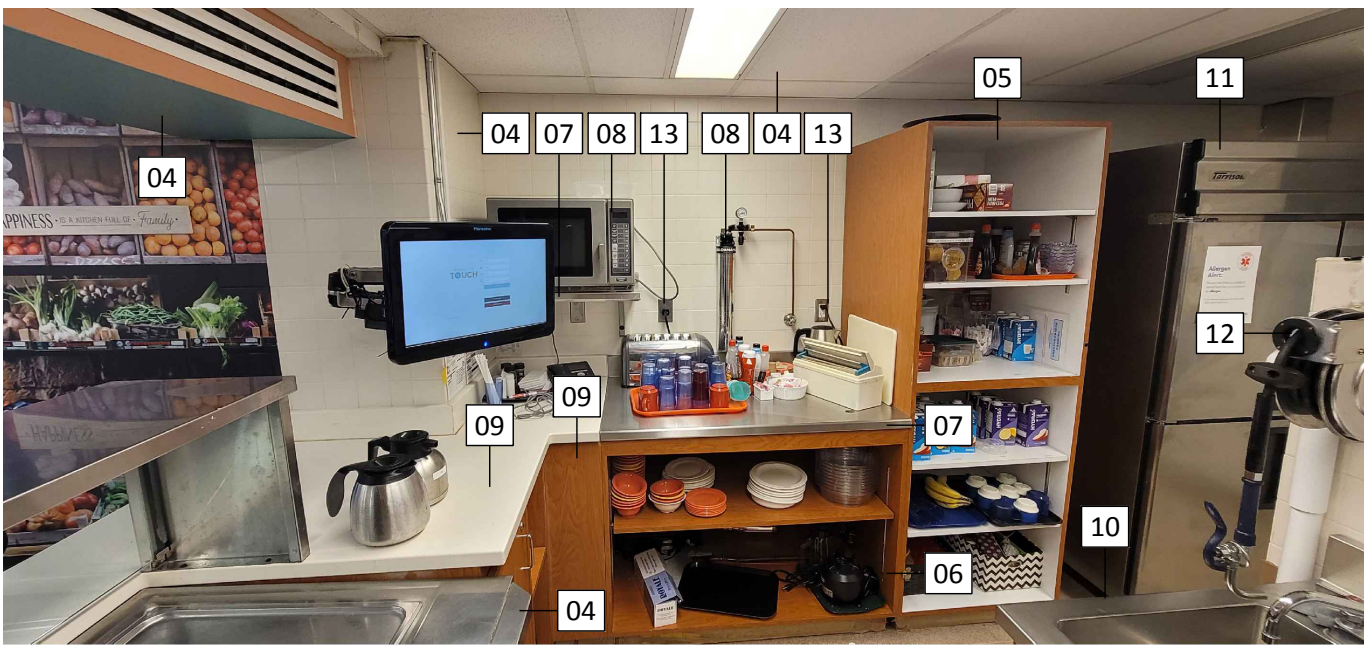
Dwg No.	A201	Area	Z-01	Project No.	C14-0585:300
Checked by	M.B.	Drawn by	J.B.	Plan No.	
Date	JULY 14, 2023	Sheet	2 of 3		



ACTIVITY RM LOOKING SOUTH



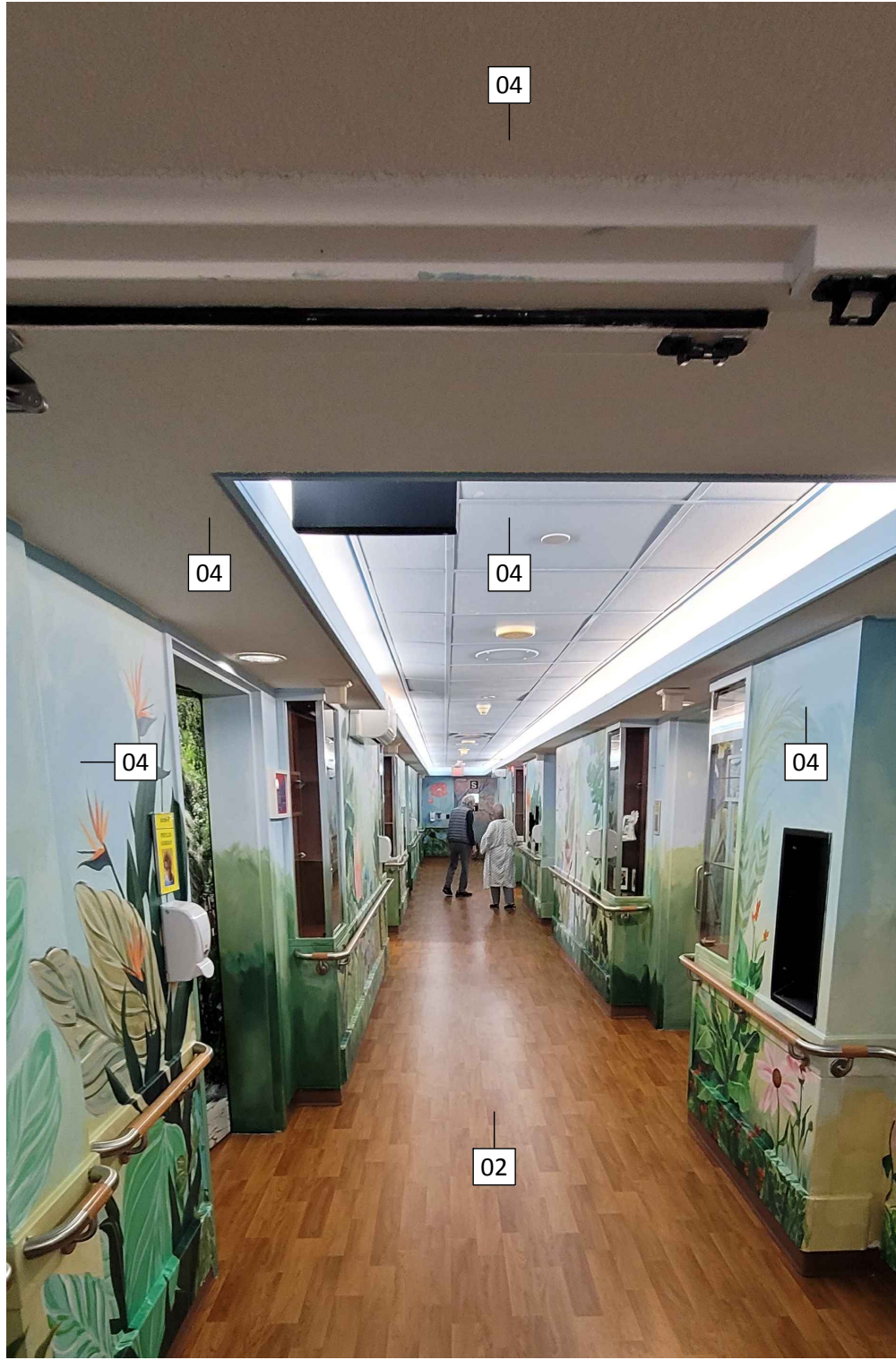
ACTIVITY RM LOOKING WEST



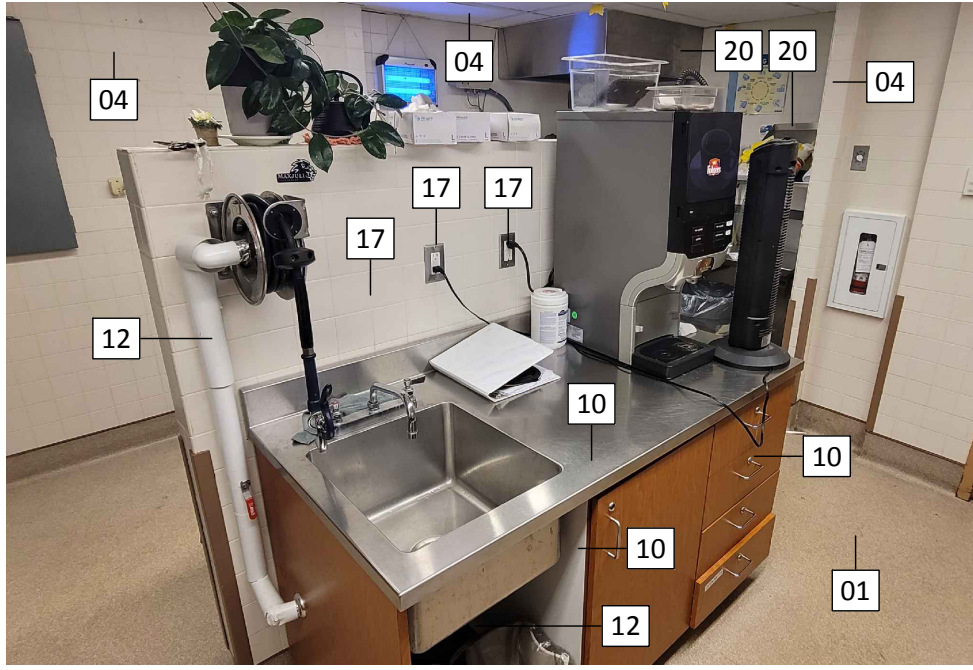
SERVERY LOOKING SOUTH



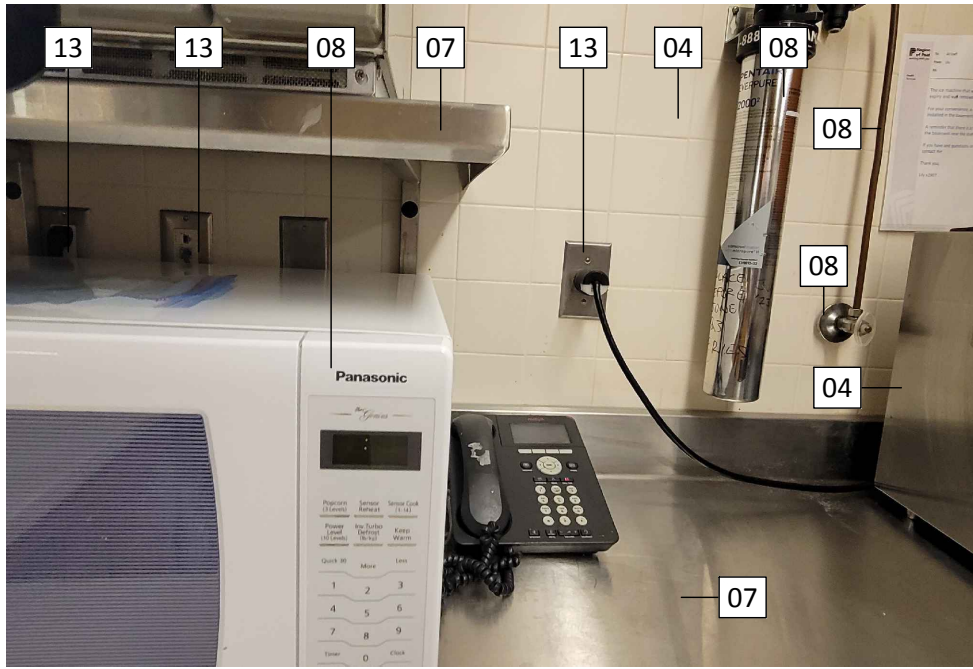
CORRIDOR LOUNGE LOOKING SOUTH



CORRIDOR LOOKING EAST



SERVERY WALL LOOKING NORTH



SERVERY WALL LOOKING SOUTH



DRAIN SLEEVE LOOKING NORTH



SERVERY WASH LOOKING WEST

PLUMBING SPECIFICATION NOTE:

SK-1 - SINGLE BOWL SINK - COUNTERTOP WITH LEDGEBACK - STANDARD USE - 304 STAINLESS STEEL - TWO HANDLE FAUCET

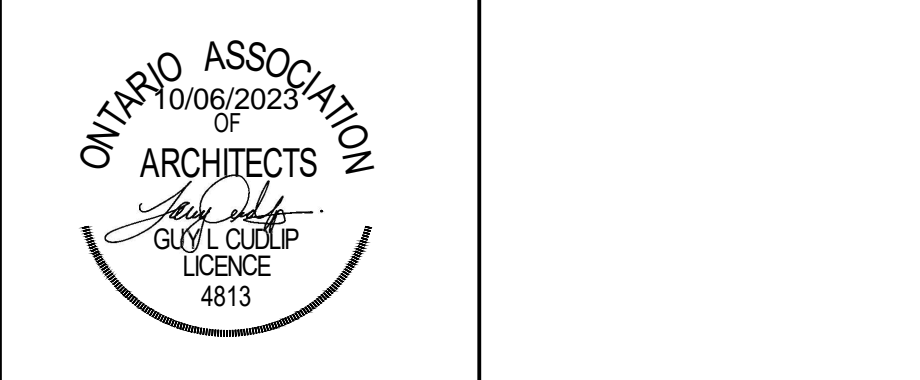
FRANKE #LBS9408P-1/3. SINK, 3 HOLE, 8" (203MM) CENTERS, 14-15/16" X 16-5/8" X 8" (364MM X 422MM X 203MM) DEEP, COUNTER MOUNTED, BACK LEDGE, GRADE 18-8 TYPE 304 STAINLESS STEEL, SINGLE COMPARTMENT, SATIN FINISHED RIM AND BOWL, SELF-RIMMING, SOUND DEADENING AND MOUNTING KIT, 3-1/2" (89MM) CRUMB CUP STRAINER WITH 1-1/2" (38MM) TAIL PIECE, CSA B45.4-08 CERTIFIED, MOEN COMMERCIAL #8285 FAUCET, C.P. 8" (203MM) C.C., DECK MOUNTED, SOLID BRASS LEAD-FREE BODY, 1/4 TURN CERAMIC DISC VALVE CARTRIDGES, 4" CAST BRASS LEVER HANDLES, MOEN S0030 5.25" REACH GOOSENECK SPOUT WITH #52610 1.5 GPM (5.7 L/MIN) VANDAL RESISTANT AERATOR. PROVIDE SUPPLIES, C.P. WITH METAL ANGLE STOPS, ADAPTORS, ESCUTCHEONS AND METAL FLEXIBLE RISERS. PROVIDE "P" TRAP, CAST BRASS 1-1/2" (38MM) WITH CLEANOUT, UNION AND ESCUTCHEON. ALTERNATES: ARCHITECTURAL METAL PRODUCTS. TRIM: DELTA

SK-2 - SINGLE BOWL SINK - COUNTERTOP WITH LEDGEBACK - STANDARD USE - 304 STAINLESS STEEL - TWO HANDLE FAUCET

FRANKE #LBS4410P-1/3. SINK, 3 HOLE, 8" (203MM) CENTERS, 18-13/16" X 16-1/8" X 10" (478MM X 422MM X 254MM) DEEP, COUNTER MOUNTED, BACK LEDGE, GRADE 18-8 TYPE 304 STAINLESS STEEL, SINGLE COMPARTMENT, SATIN FINISHED RIM AND BOWL, SELF-RIMMING, SOUND DEADENING AND MOUNTING KIT, 3-1/2" (89MM) CRUMB CUP STRAINER WITH 1-1/2" (38MM) TAIL PIECE, CSA B45.4-08 CERTIFIED, MOEN COMMERCIAL #8282 FAUCET, C.P. 8" (203MM) C.C., DECK MOUNTED, SOLID BRASS LEAD-FREE BODY, 1/4 TURN CERAMIC DISC VALVE CARTRIDGES, 4" CAST BRASS LEVER HANDLES, 9.5" REACH SPOUT WITH 2.2 GPM (8.3 L/MIN) AERATOR. PROVIDE SUPPLIES, C.P. WITH METAL ANGLE STOPS, ADAPTORS, ESCUTCHEONS AND METAL FLEXIBLE RISERS. PROVIDE "P" TRAP, CAST BRASS 1-1/2" (38MM) WITH CLEANOUT, UNION AND ESCUTCHEON. ALTERNATES: ARCHITECTURAL METAL PRODUCTS. TRIM: DELTA

DISCLAIMER:

This drawing has been prepared for the use of CIMA+'s client and may not be used, reproduced or related upon by third parties, except as agreed by CIMA+ and its client, as required by law or for use by governmental reviewing agencies. CIMA+ accepts no responsibility, and denies any liability whatsoever, to any party that modifies this drawing without CIMA+'s express written consent. Do no scale this document. All measurements must be obtained from the stated dimensions.



C²Architecture

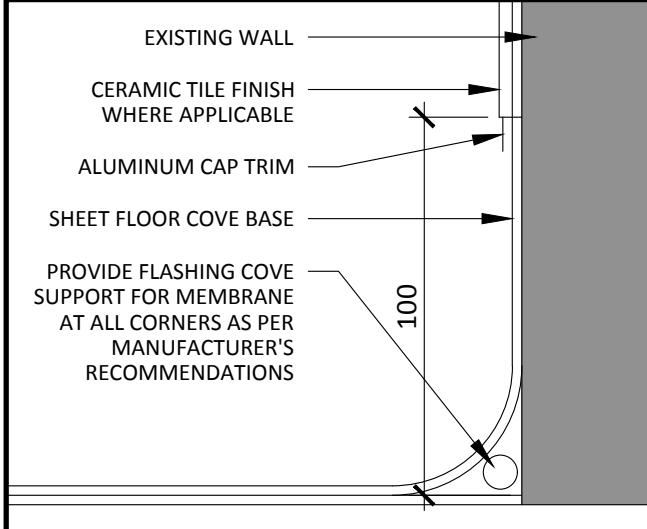
415 BASELINE ROAD WEST, 2ND FLOOR
BOWMANVILLE, ON L1C 5M2
CANADA
www.cima.ca

Region
of Peel
working with you

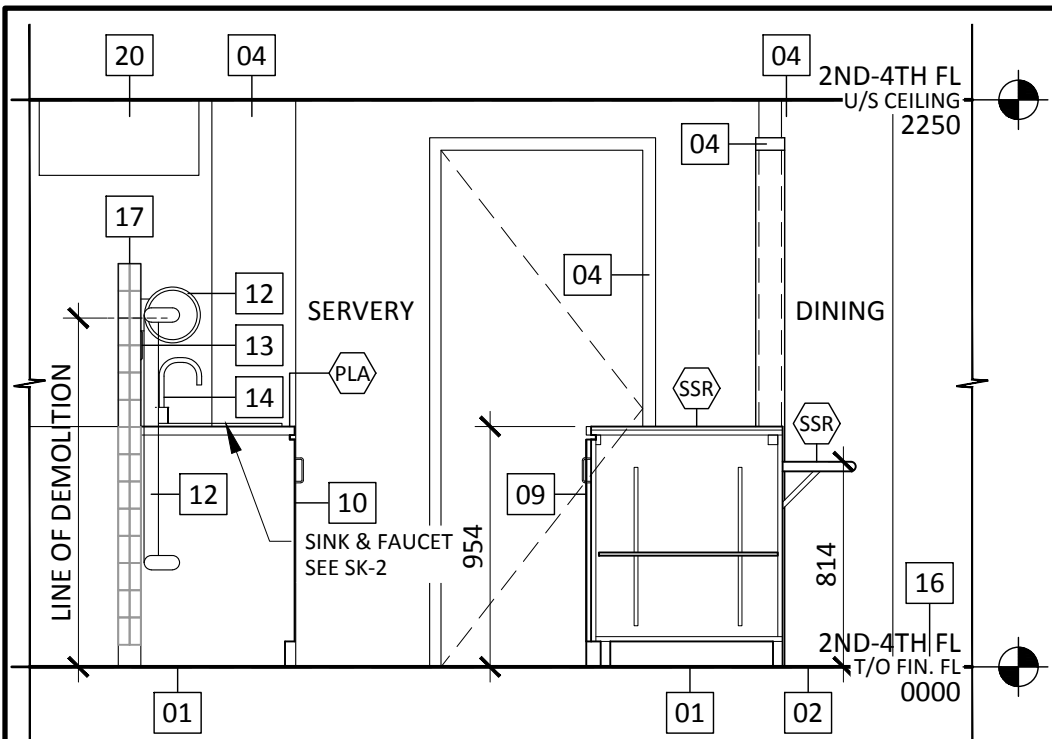
SHERIDAN VILLA LTC

ARCHITECTURAL
MILLWORK, DETAILS & SCHEDULES

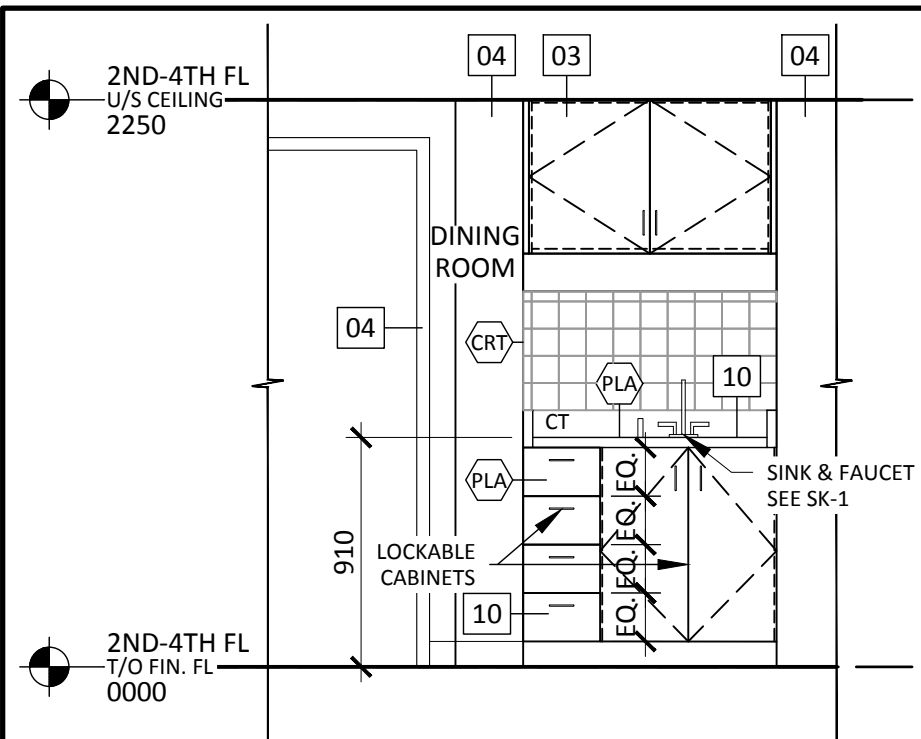
Dwg No.	A301	Area	Z-01	Project No.	C14-0585:300
Checked by	M.B.	Drawn by	J.B.	Plan No.	
Date	JULY 14, 2023	Sheet	3 of 3		



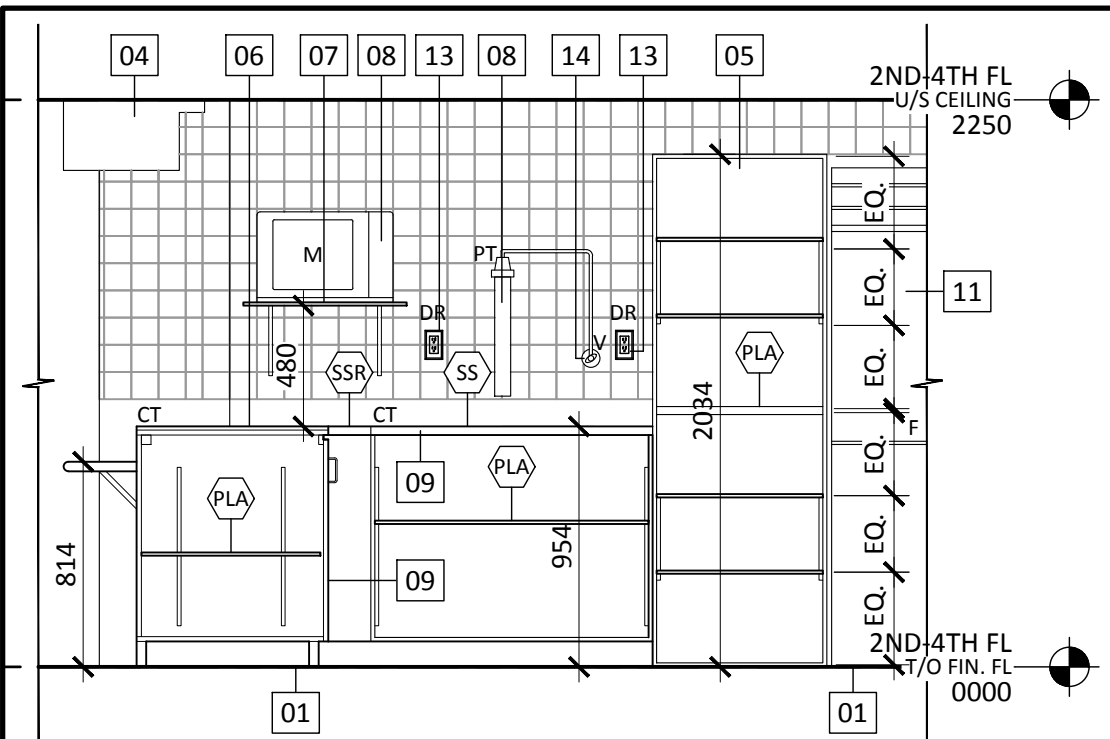
5 COVE BASE DETAIL
A301 SCALE: 1:2



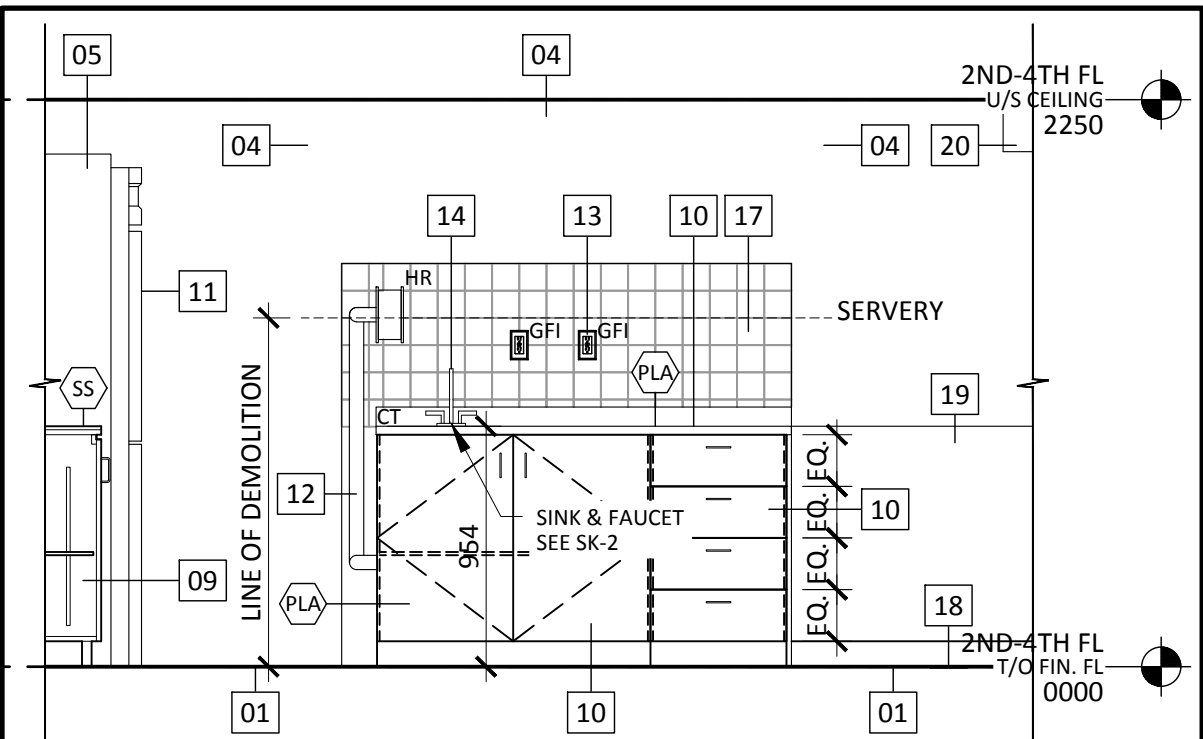
4 SERVERY COUNTER SECTION
A301 SCALE: 1:30



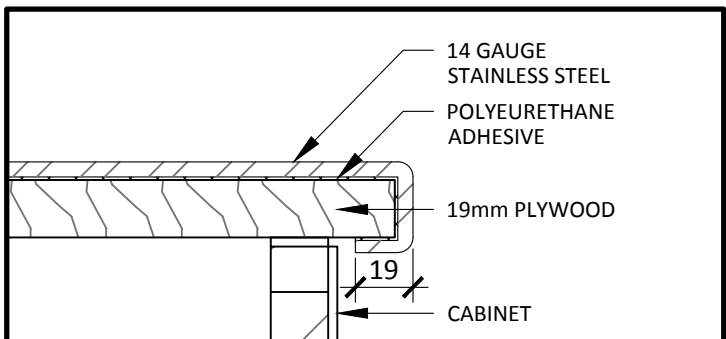
3 WASH SINK ELEVATION
A301 SCALE: 1:30



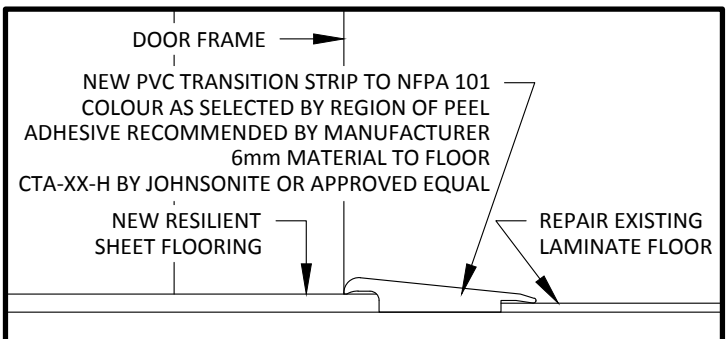
2 SERVERY PREP TABLE ELEVATION
A301 SCALE: 1:30



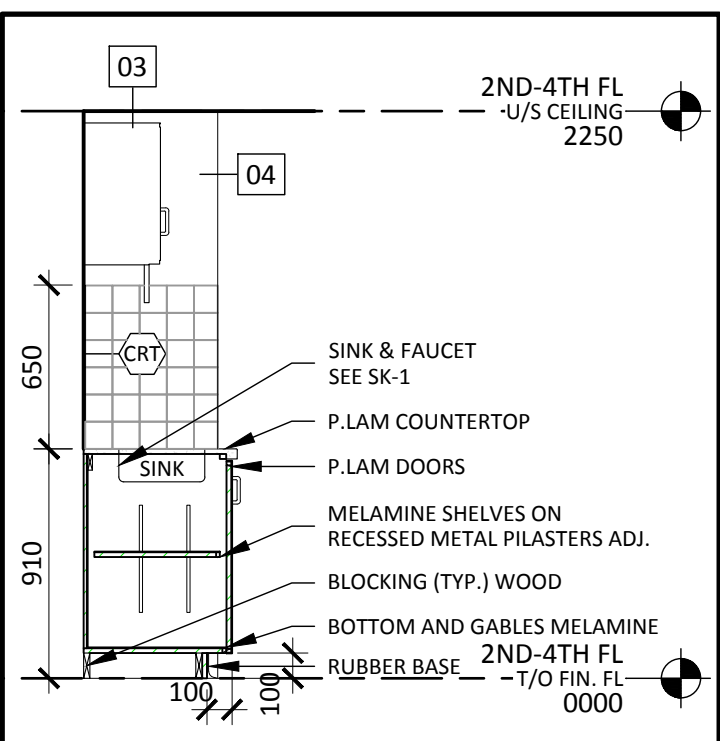
1 SERVERY TILE WALL ELEVATION
A301 SCALE: 1:30



8 STEEL COUNTER EDGE
A301 SCALE: 1:2.5



7 FLOOR TRANSITION
A301 SCALE: 1:2.5



6 WASH SINK SECTION
A301 SCALE: 1:30