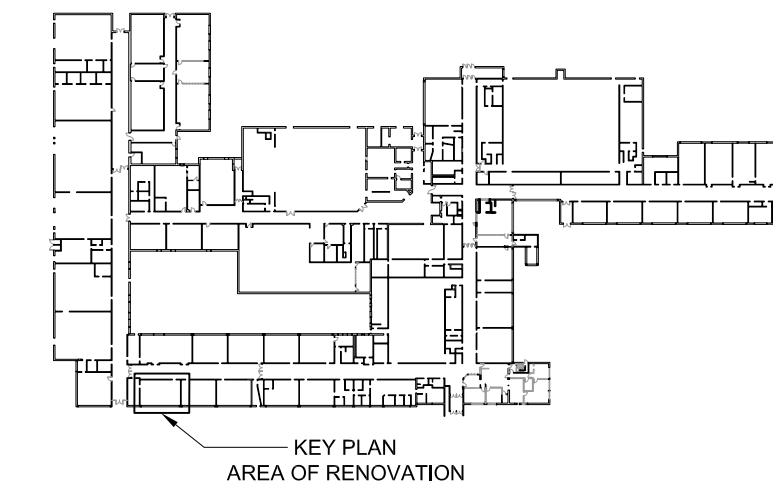


1
S1 PART GROUND FLOOR PLAN AT SCIENCE LAB 107
1:50

- GENERAL GROUND FLOOR NOTES**
- FLOOR STRUCTURE IS EXISTING UNLESS NOTED OTHERWISE. EXISTING BUILDING IS DESIGNED BY KYLES & KYLES ARCHITECTS ON YEAR 1983.
 - UNLESS NOTED OTHERWISE PROVIDE NEW 100mm SLAB ON GRADE AS PER SPECIFICATION THROUGHOUT AND AS PER B/S1. SAWCUT SLAB INTO AREAS 6m x 6m MAX. PROVIDE CONTROL JOINTS IN ALL DOORWAYS. REINF. 1 LAYER 152 X 152 MM/18.7MM/18.7 WWF OR USING FIBRE MESH. REFER TO "NEW SLAB ON GRADE" DETAIL ON THIS DRAWING.
 - USE DETAIL A/S1 AT ALL LOCATIONS WHERE EXISTING SLAB IS TO BE CUT AND REPAIRED AND FOR ALL NEW BELOW GRADE SERVICES.
 - SHORE AS REQUIRED.



NOTE: THIS DRAWING IS NOT TO BE SCALED. THE CONTRACTOR IS RESPONSIBLE FOR THE VERIFICATION OF ALL SITE DIMENSIONS AND FOR NOTIFYING THE ARCHITECT OF ANY SITE CONDITIONS AND SITE MEASUREMENTS THAT ARE NOT CONSISTENT WITH THE DRAWINGS.

no.	revision	date

no.	issue	date
1	Issued for Permit and Tender	April 01, 2026

project
WRDSB PRESTON HIGH SCHOOL RENOVATIONS

WATERLOO REGION DISTRICT SCHOOL BOARD
550 ROSE ST., CAMBRIDGE, ON. N3H 2E6

drawing
PART GROUND FLOOR PLAN AT SCIENCE LAB 107

drawing scale
1:50

ward99 project number
25023 - WRDSB PRESTON FAMILY STUDIES AND CLASSROOM

VX
VX ENGINEERING INC
STRUCTURAL ENGINEERS

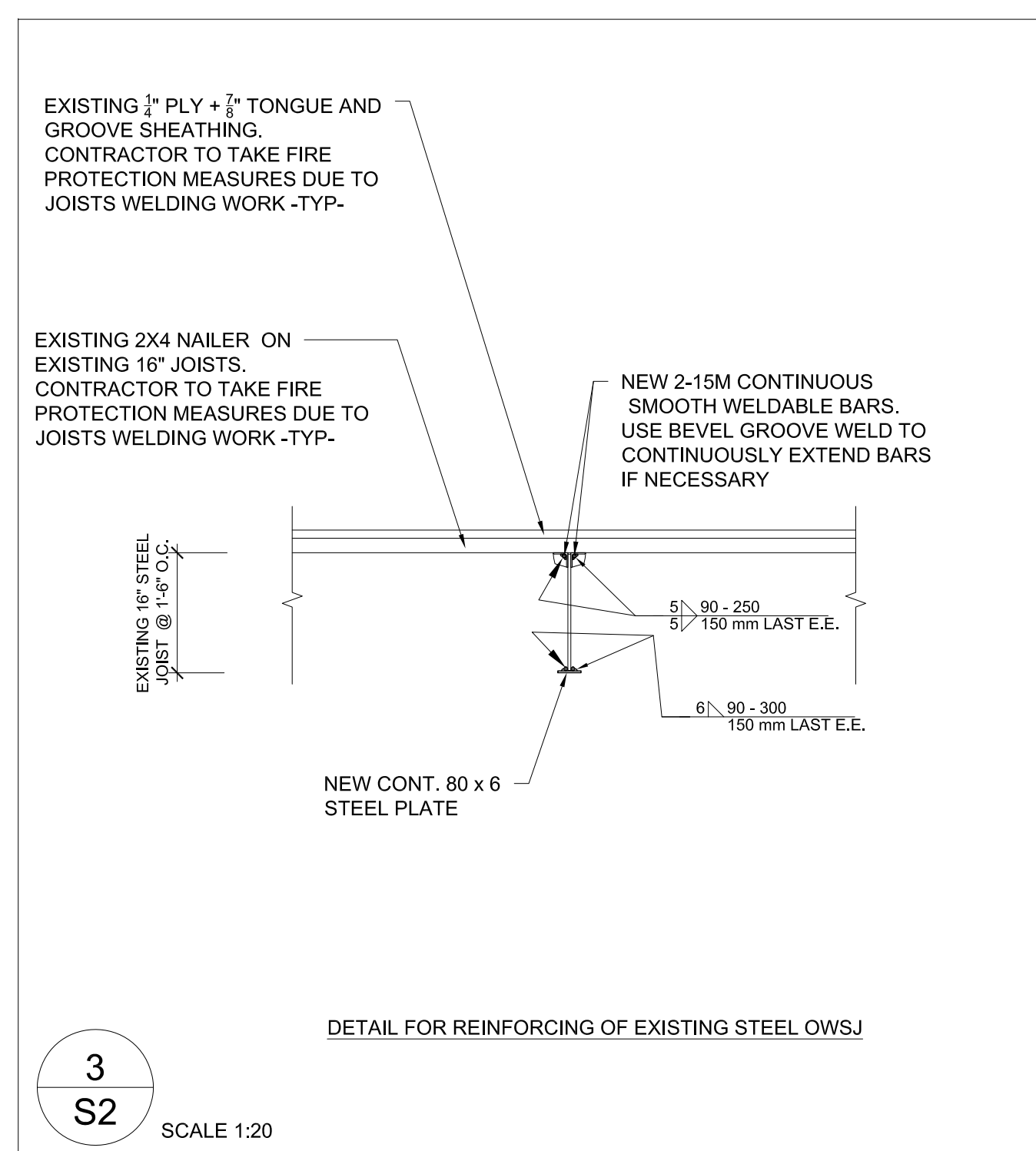
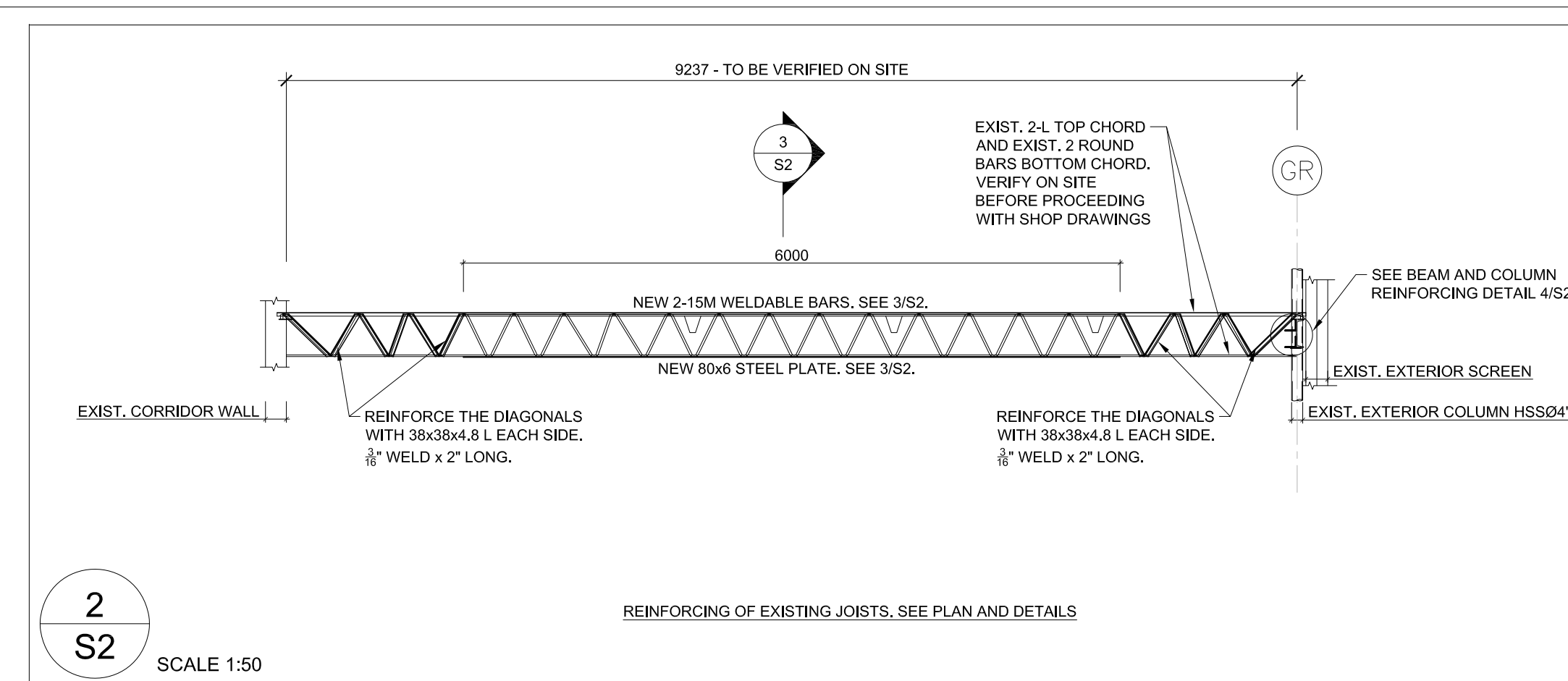
2500 - 135 Marlee Avenue
Toronto, Ontario M6B 4C6
416 670 9422 www.vxengineering.com

S1

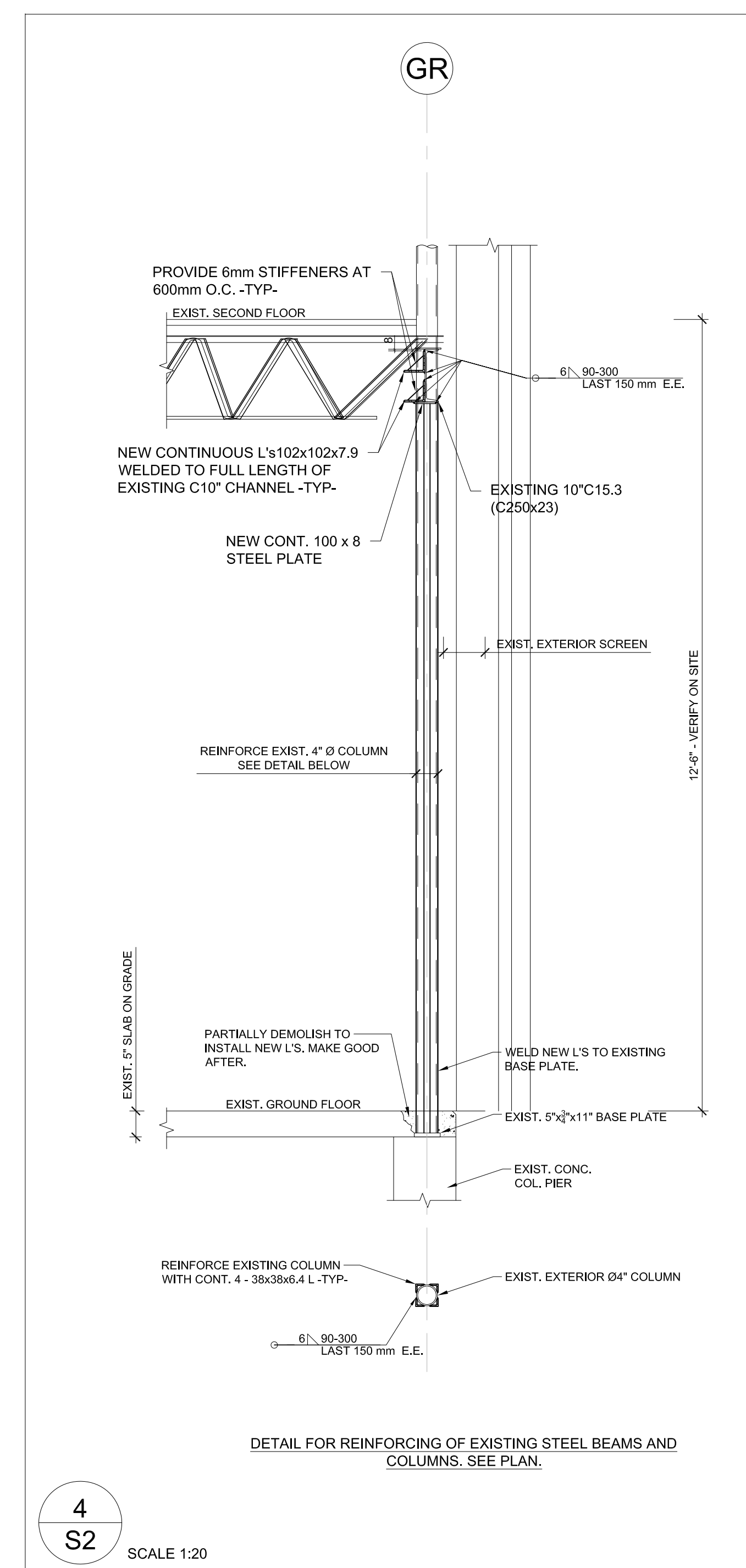


1 PART SECOND FLOOR FRAMING PLAN
S2 1:50

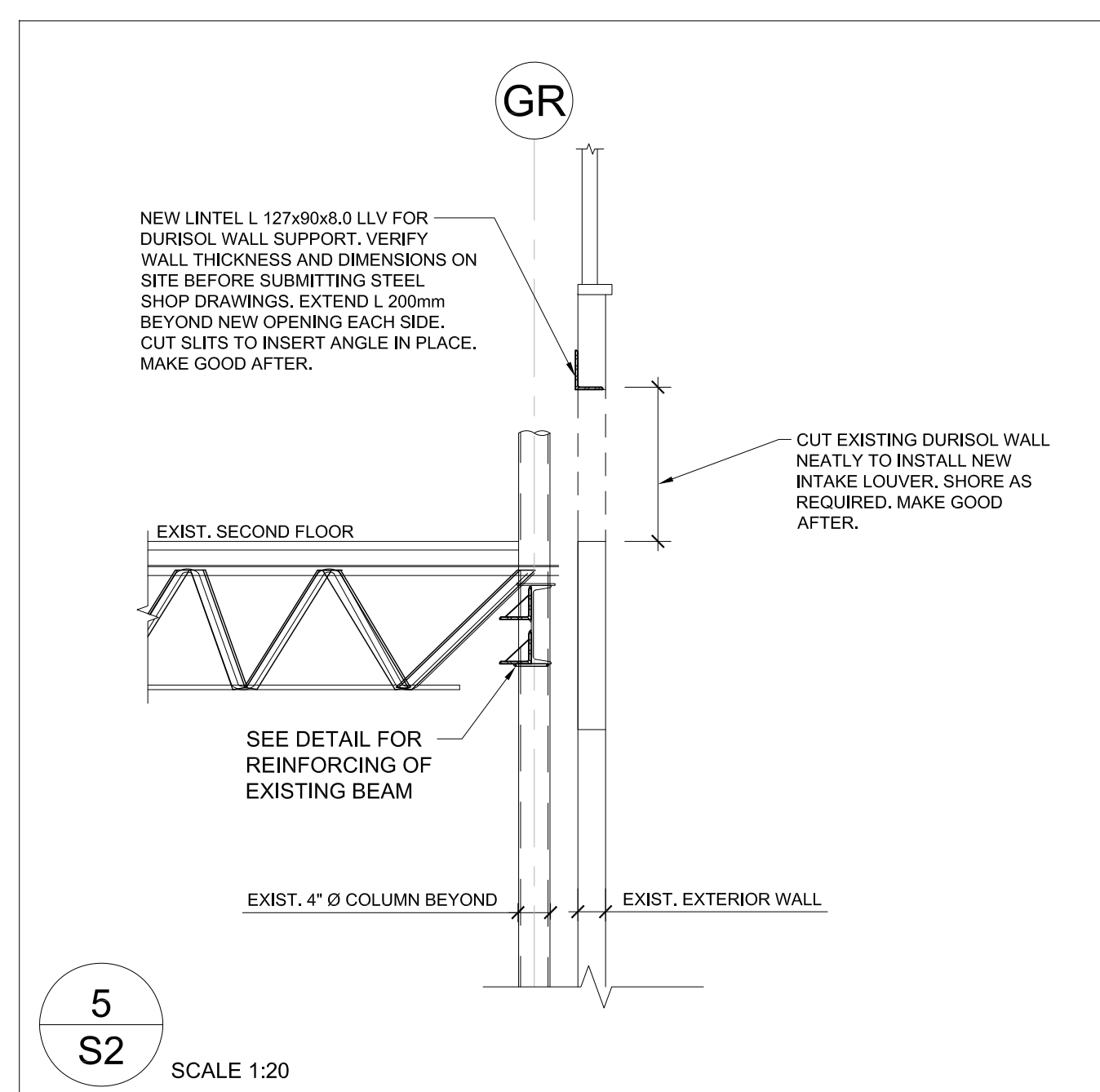
- PART 2ND FLOOR FRAMING PLAN** SCALE 1:50
- FOR SLOPES AND ELEVATIONS SEE ARCHITECTURAL DRAWINGS.
 - FLOOR STRUCTURE IS EXISTING UNLESS NOTED OTHERWISE. EXISTING FRAMING DATA ARE TAKEN FROM THE ORIGINAL DRAWINGS DESIGNED BY KYLES & KYLES ARCHITECTS ON YEAR 1955 AND AGAIN BY KYLES & KYLES ARCHITECTS FOR ADDITION ON YEAR 1963. REPORT TO CONSULTANTS DISCREPANCIES AND NECESSARY ADJUSTMENTS DUE TO ACTUAL CONDITIONS BEFORE PROCEEDING WITH WORK.
 - EXISTING FAMILY STUDIES FLOOR STRUCTURE IS DESIGNED FOR LIVE LOAD 2.4kN/m². REINFORCING OF EXISTING FAMILY STUDIES FLOOR STRUCTURE AS PER THESE DESIGN DRAWINGS WILL INCREASE FLOOR BEARING CAPACITY TO LIVE LOAD 4.8kN/m².
 - UNLESS NOTED OTHERWISE PROVIDE 189 x 89 x 6.4 ANGLE + NAILER REINFORCING AROUND ALL OPENINGS IN FLOOR DECK THAT ARE BIGGER THAN 150mm x 150mm.
 - SEE ALSO TYPICAL DETAILS AND GENERAL NOTES ON THESE DRAWINGS.
 - UNLESS NOTED OTHERWISE PROVIDE 170 X 12 X 200 BEARING PLATES EACH END OF ALL STEEL BEAMS. ALL BEARING PLATES SHALL BE WITH 2-190 WELDED ANCHORS X 250 LG. WELD BEAM TO BEARING PLATES TYPICAL.
 - UNLESS NOTED OTHERWISE PROVIDE 150 X 12 X 150 BEARING PLATES FOR EXISTING OWSJ'S WHERE REQUIRED. ALL BEARING PLATES SHALL BE WITH 1-190 WELDED ANCHORS X 250 LG. WELD BEAM TO BEARING PLATES TYPICAL.
 - UNLESS NOTED OTHERWISE FOR LINTELS OVER MECHANICAL WALL OPENINGS REFER TO "LINTELS FOR DUCTS AND SERVICES" ON TYPICAL DETAIL SHEET. FOR ALL NEW LINTELS IN EXISTING WALLS CONFIRM WALL THICKNESS BEFORE LINTELS ARE FABRICATED. REFER TO ARCHITECTURAL AND MECHANICAL DRAWINGS FOR EXACT LOCATIONS.
 - BLOCK VOIDS WITH REINFORCING OR SHOWN AS "FILLED SOLID" SHALL BE FILLED WITH 20MPa CONCRETE WITH PEA GRAVEL OR 20MPa COARSE GROUT.
 - SHORE AS REQUIRED.



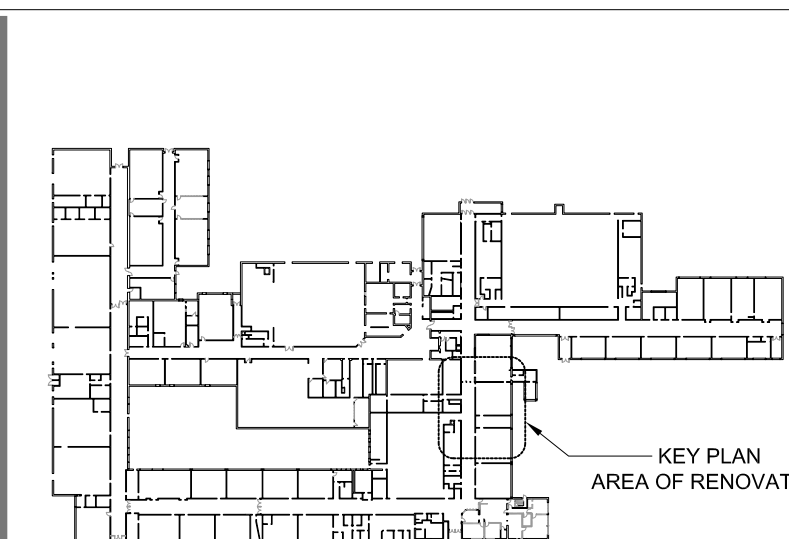
3
S2 SCALE 1:20



4
S2 SCALE 1:20



5
S2 SCALE 1:20



NOTE: THIS DRAWING IS NOT TO BE SCALED. THE CONTRACTOR IS RESPONSIBLE FOR THE VERIFICATION OF ALL SITE DIMENSIONS AND FOR NOTIFYING THE ARCHITECT OF ANY SITE CONDITIONS AND SITE MEASUREMENTS THAT ARE NOT CONSISTENT WITH THE DRAWINGS.

no.	revision	date

no.	issue	date
1	Issued for Permit and Tender	April 01, 2026

project
WRDSB PRESTON HIGH SCHOOL RENOVATIONS

WATERLOO REGION DISTRICT SCHOOL BOARD
550 ROSE ST., CAMBRIDGE, ON. N3H 2E6

drawing
PART 2ND FLOOR FRAMING PLAN

drawing scale
1:50

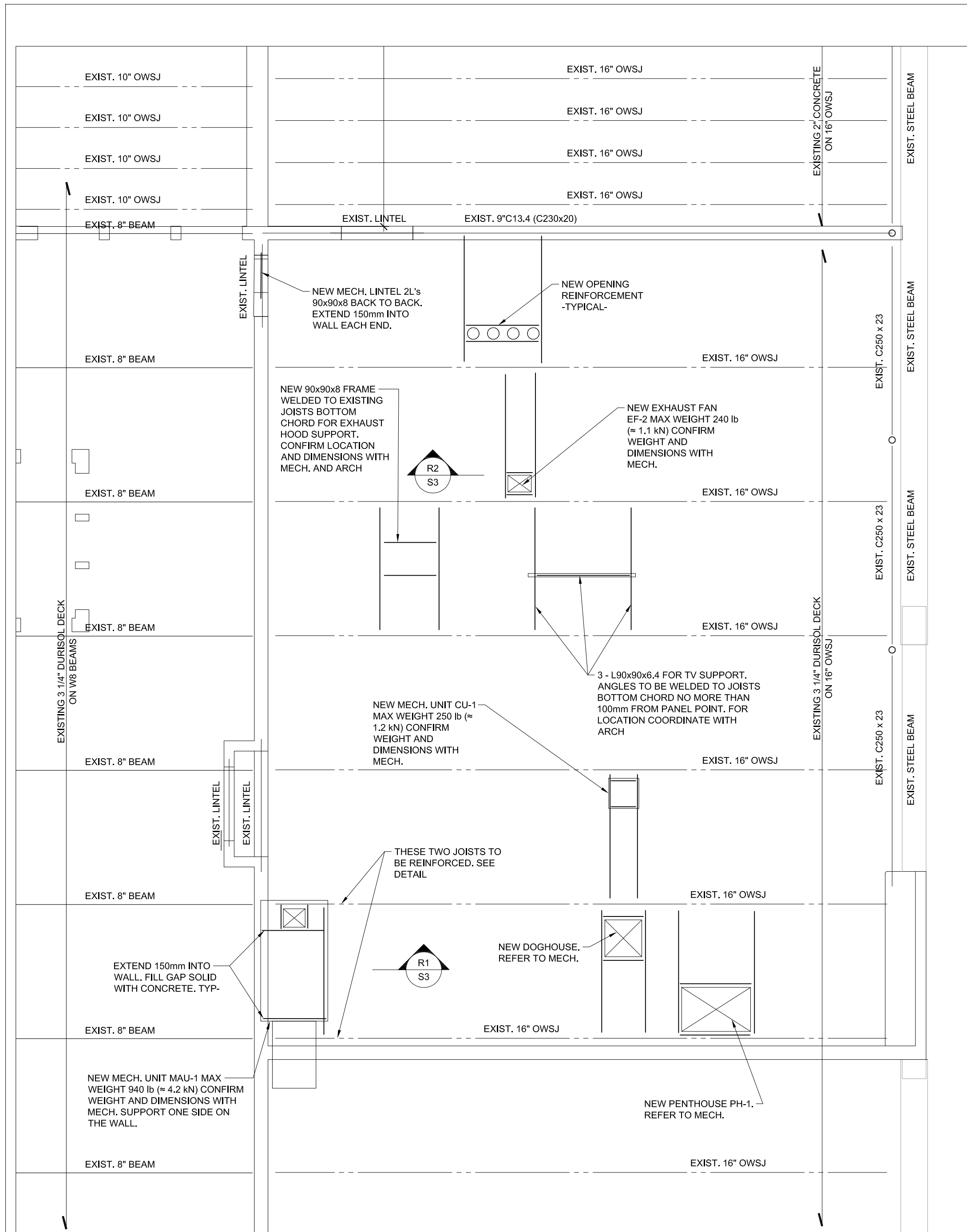
ward99 project number
25023 - WRDSB PRESTON FAMILY STUDIES AND CLASSROOM

drawing no.

VX
VX ENGINEERING INC
STRUCTURAL ENGINEERS

VX ENGINEERING INC.
2500 - 135Marlee Avenue
Toronto, Ontario M6B 4C6
416 670 9422 www.vxengineering.com

S2

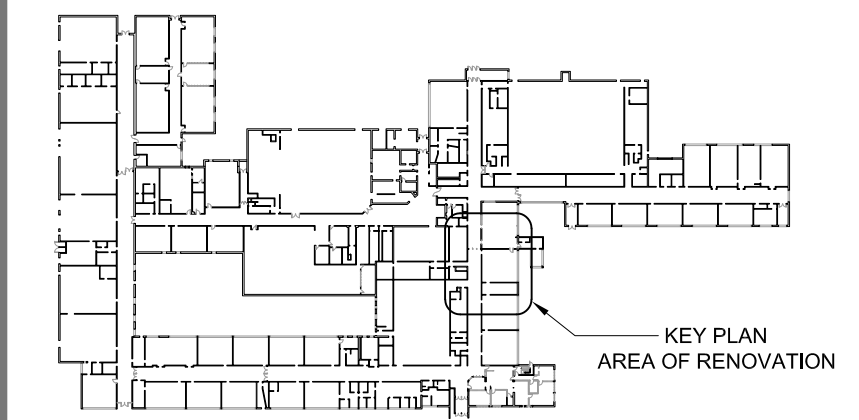


PART ROOF FRAMING PLAN

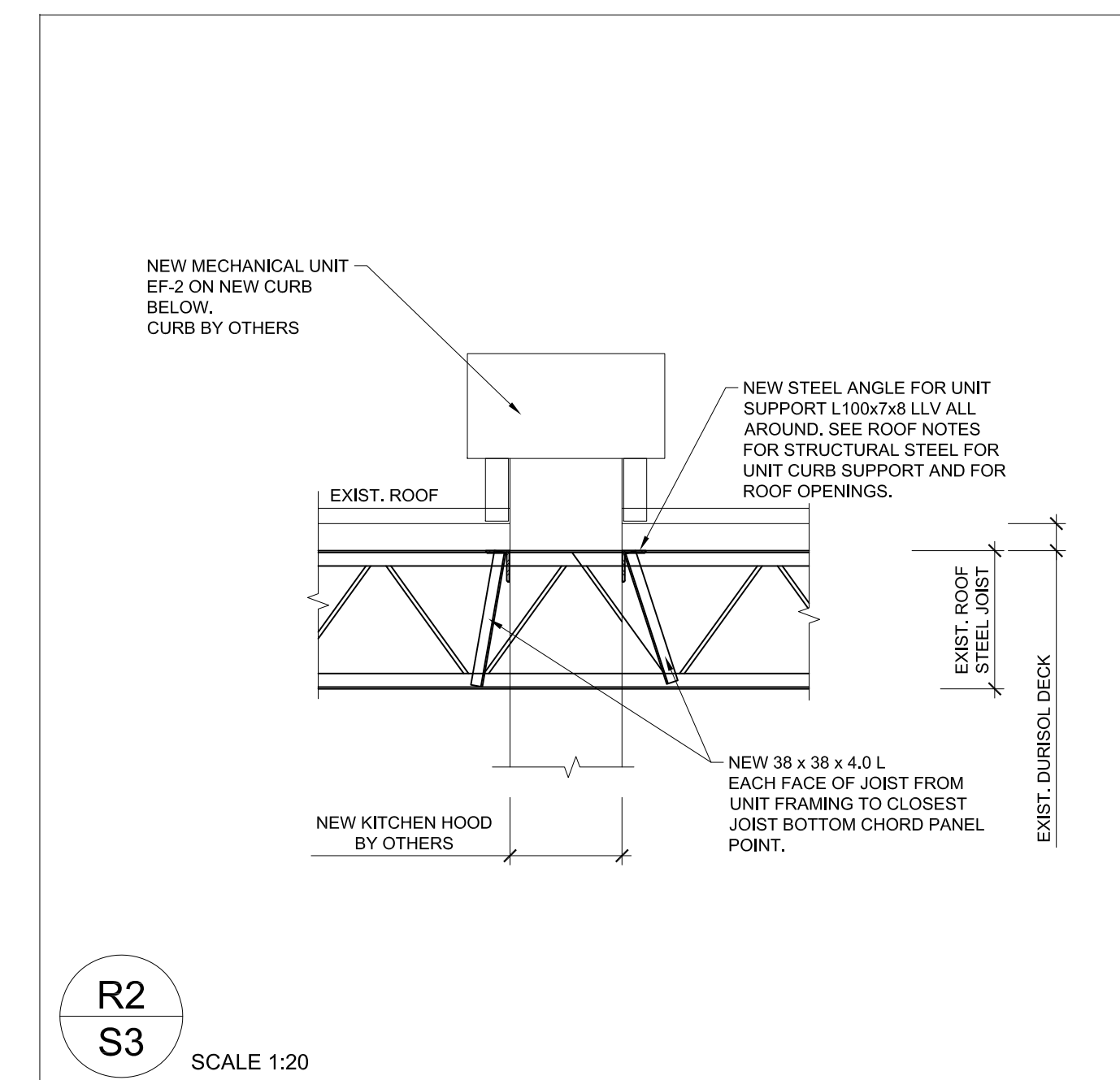
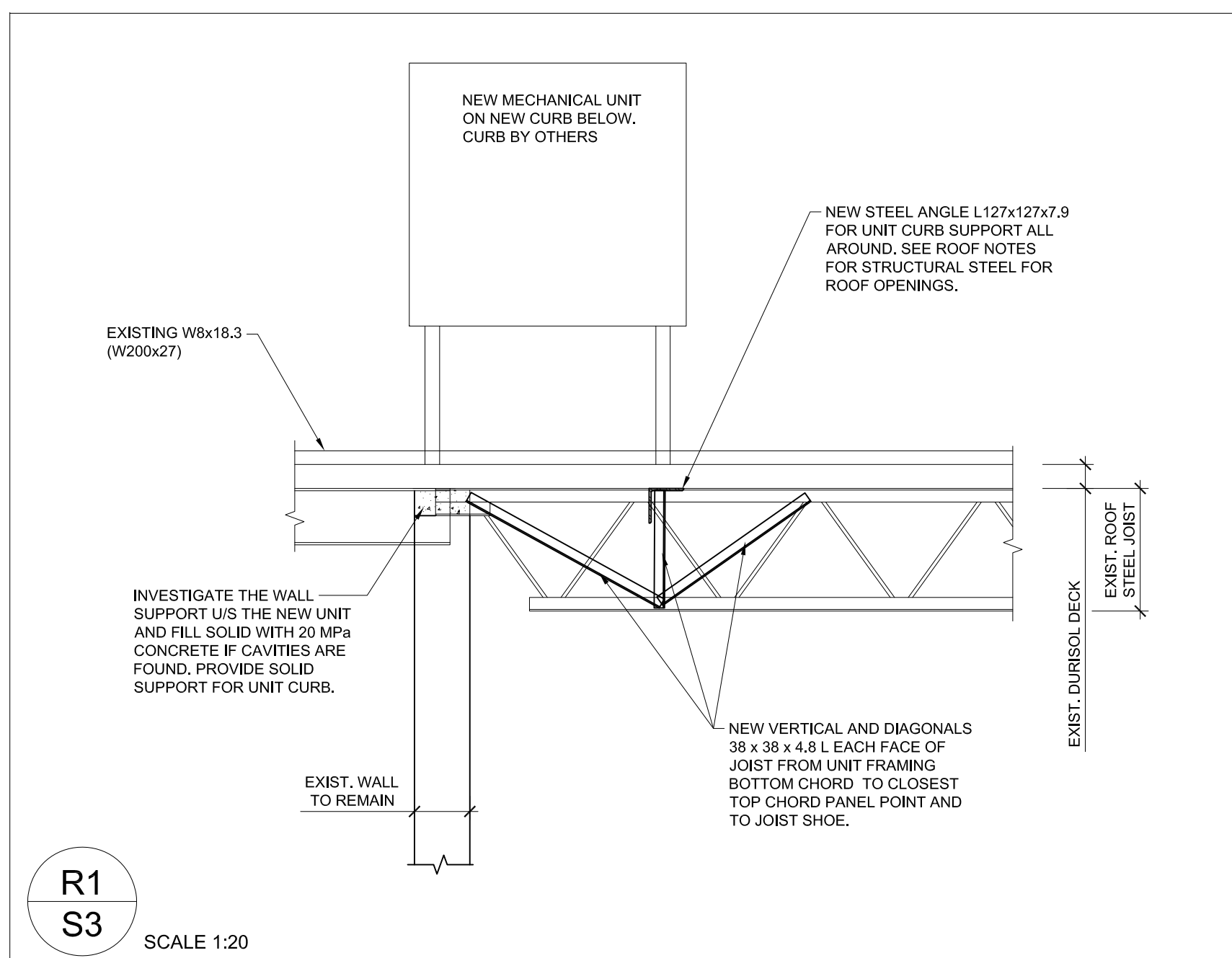
SCALE 1:50

- FOR ROOF SLOPES AND ELEVATIONS SEE ARCHITECTURAL DRAWINGS.
- ROOF STRUCTURE IS EXISTING UNLESS NOTED OTHERWISE. EXISTING FRAMING DATA ARE TAKEN FROM THE ORIGINAL DRAWINGS DESIGNED BY KYLES & KYLES ARCHITECTS ON YEAR 1955 AND AGAIN BY KYLES & KYLES ARCHITECTS FOR ADDITION ON YEAR 1963. REPORT TO CONSULTANTS DISCREPANCIES AND NECESSARY ADJUSTMENTS DUE TO ACTUAL CONDITIONS BEFORE PROCEEDING WITH WORK.
- TOP OF STEEL BEAMS IS 0.00mm BELOW BOTTOM OF STEEL DECK ELEVATION UNLESS NOTED OTHERWISE.
- SPECIFIED SNOW LOAD IS 1.68kN/m². ADD DRIFT SNOW AS SHOWN. MULTIPLY SNOW LOADS BY IMPORTANCE FACTOR - SEE IMPORTANCE FACTOR TABLE.
- UNLESS NOTED OTHERWISE PROVIDE L100x75x8 LLV FRAMING U/S NEW ROOF MECHANICAL UNITS AND L90 X 80 X 90 ANGLE REINFORCING AROUND ALL OPENINGS IN ROOF DECK THAT ARE BIGGER THAN 150mm x 150mm.
- SEE ALSO TYPICAL DETAILS AND GENERAL NOTES ON THESE DRAWINGS.
- UNLESS NOTED OTHERWISE PROVIDE 170 X 12 X 200 BEARING PLATES EACH END OF ALL STEEL BEAMS. ALL BEARING PLATES SHALL BE WITH 2-190 WELDED ANCHORS X 250 LG. WELD BEAM TO BEARING PLATES TYPICAL.
- UNLESS NOTED OTHERWISE PROVIDE 170 X 12 X 200 BEARING PLATES FOR EXISTING OWSJ'S WHERE REQUIRED. ALL BEARING PLATES SHALL BE WITH 2-190 WELDED ANCHORS X 250 LG. WELD BEAM TO BEARING PLATES TYPICAL.
- W.P.L./1 - 75 X 6 CONTINUOUS STEEL PLATE WITH 120 X 200 LG. STUDS AT 800c/c SET IN BLOCK VOIDS FILLED WITH 20MPa CONCRETE
- REFER TO OTHER CONSULTANTS DRAWINGS AND SPECIFICATIONS FOR ROOF MOUNTED OR SUSPENDED UNITS. SHOW THE UNITS ON THE STEEL FABRICATORS SHOP DRAWINGS AND OBTAIN ARCHITECTS, MECHANICAL AND/OR ELECTRICAL ENGINEERS APPROVAL OF WEIGHTS AND LOCATIONS BEFORE FABRICATION IS STARTED.
- UNLESS NOTED OTHERWISE FOR LINTELS OVER MECHANICAL WALL OPENINGS REFER TO "LINTELS FOR DUCTS AND SERVICES" ON TYPICAL DETAIL SHEET. FOR ALL NEW LINTELS IN EXISTING WALLS CONFIRM WALL THICKNESS BEFORE LINTELS ARE FABRICATED. REFER TO ARCHITECTURAL AND MECHANICAL DRAWINGS FOR EXACT LOCATIONS.
- BLOCK VOIDS WITH REINFORCING OR SHOWN AS "FILLED SOLID" SHALL BE FILLED WITH 20MPa CONCRETE WITH PEA GRAVEL OR 20MPa COARSE GROUT.
- WIND LOAD PARAMETERS, AS PER OBC 2024, PART 4, 1/2 WIND PRESSURE 0.36kPa, 1/3 WIND PRESSURE 0.28kPa.
- SEISMIC LOAD SEISMIC LOAD PARAMETERS, AS PER OBC 2024 PART 4. EQUIVALENT STATIC ANALYSIS, MASONRY SHEAR WALL SYSTEM AND CONVENTIONAL STEEL STRUCTURE. S_a(0.2, X450) = 0.225, S_a(0.5, X450) = 0.13, S_a(1.0, X450) = 0.707, S_a(2.0, X450) = 0.0333, S_a(5.0, X450) = 0.00875, S_a(10.0, X450) = 0.00309, PGA (X450) = 0.104, PGV(X450) = 0.0836, I_w = 1.3, RD = 1.5, RO = 1.5, SEISMIC CATEGORY SC3
- REFER TO "IMPORTANCE FACTOR" TABLE.
- SHORE AS REQUIRED.

IMPORTANCE FACTOR CATEGORY 'HIGH'		
	ULS	SLS
SNOW	1.15	0.9
WIND	1.15	0.75
EARTHQUAKE	1.3	1.0



1 PART ROOF FRAMING PLAN
S3 1:50



NOTE: THIS DRAWING IS NOT TO BE SCALED. THE CONTRACTOR IS RESPONSIBLE FOR THE VERIFICATION OF ALL SITE DIMENSIONS AND FOR NOTIFYING THE ARCHITECT OF ANY SITE CONDITIONS AND SITE MEASUREMENTS THAT ARE NOT CONSISTENT WITH THE DRAWINGS.

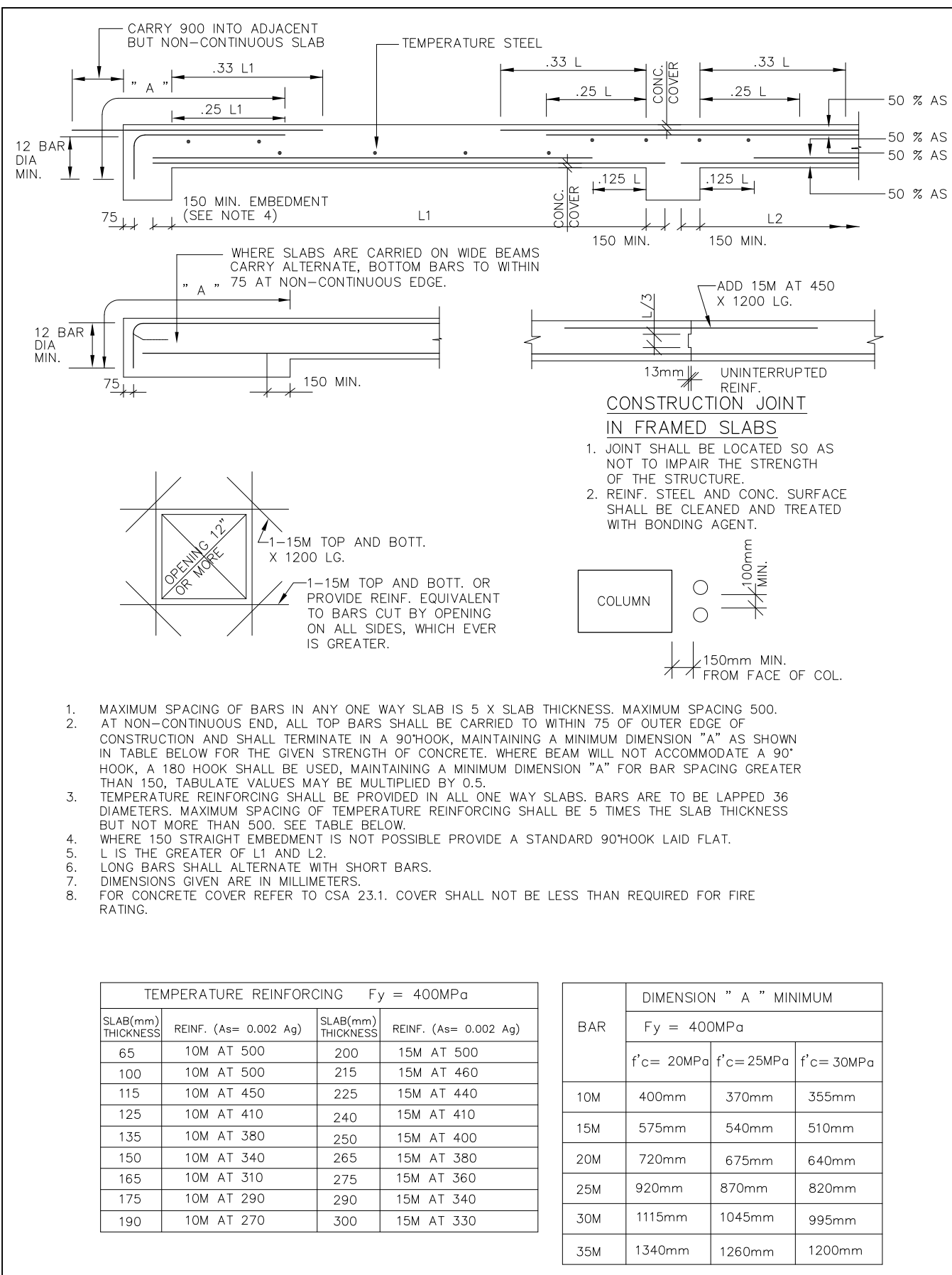
no.	revision	date
1	Issued for Permit and Tender	April 01, 2026

project
WRDSB PRESTON HIGH SCHOOL RENOVATIONS
WATERLOO REGION DISTRICT SCHOOL BOARD
550 ROSE ST., CAMBRIDGE, ON. N3H 2E6
drawing
PART ROOF FRAMING PLAN
drawing scale
1:50
ward99 project number
25023 - WRDSB PRESTON FAMILY STUDIES AND CLASSROOM

VX
VX ENGINEERING INC
STRUCTURAL ENGINEERS

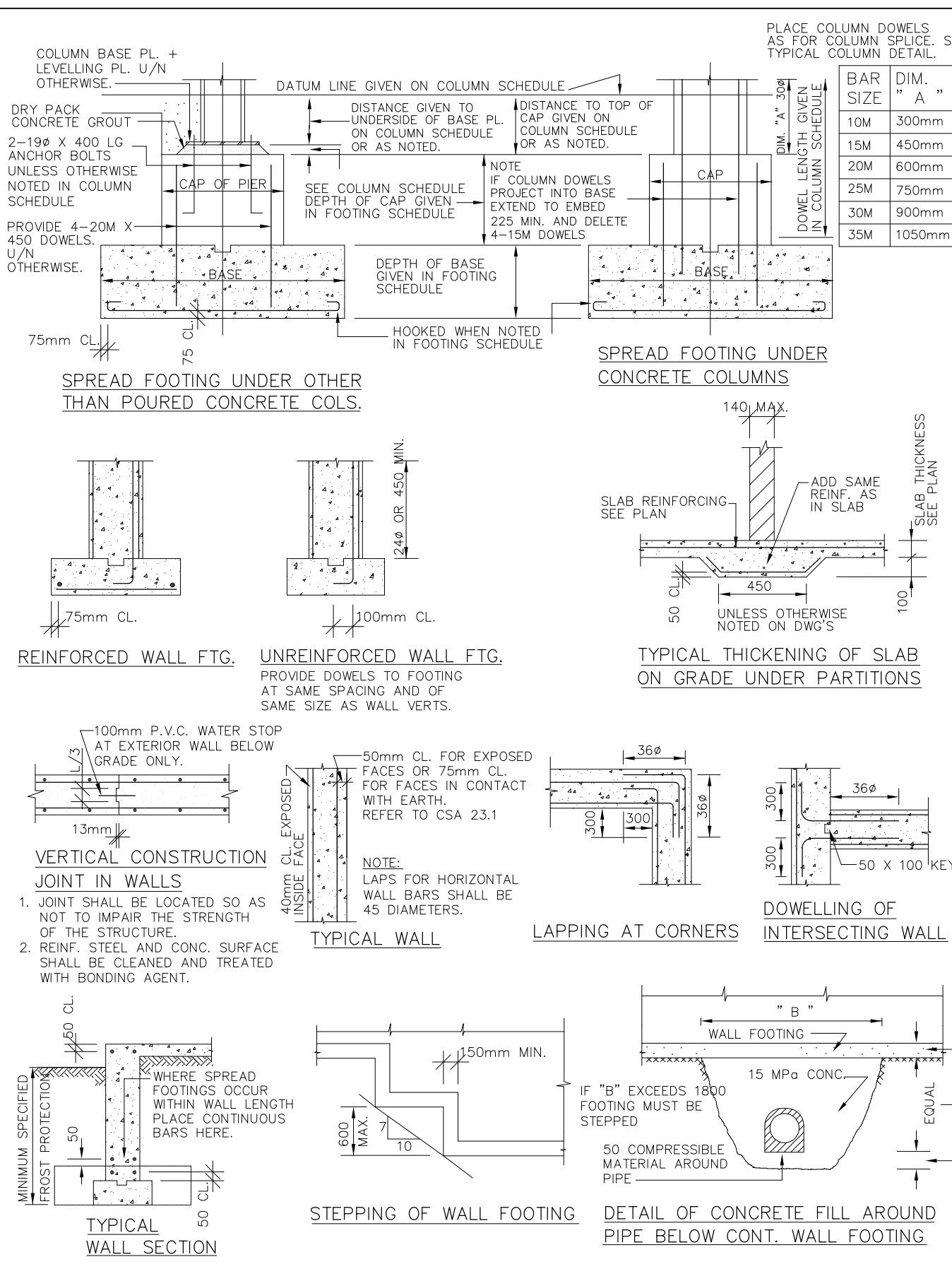
VX ENGINEERING inc.
2500 - 135Maree Avenue
Toronto, Ontario M6B 4C6
416 670 9422 www.vxengineering.com

S3



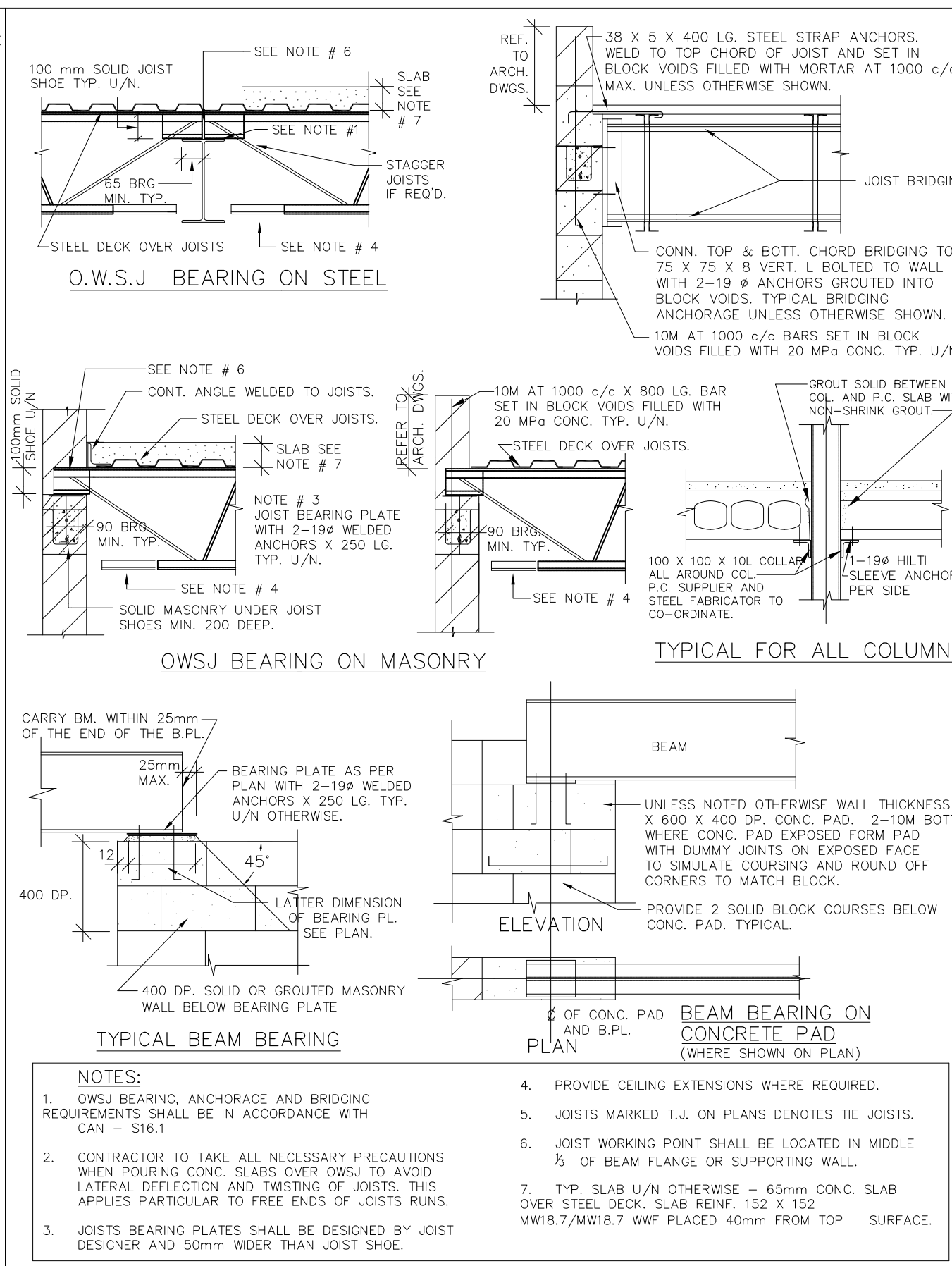
ONE WAY SLAB DETAILS

1



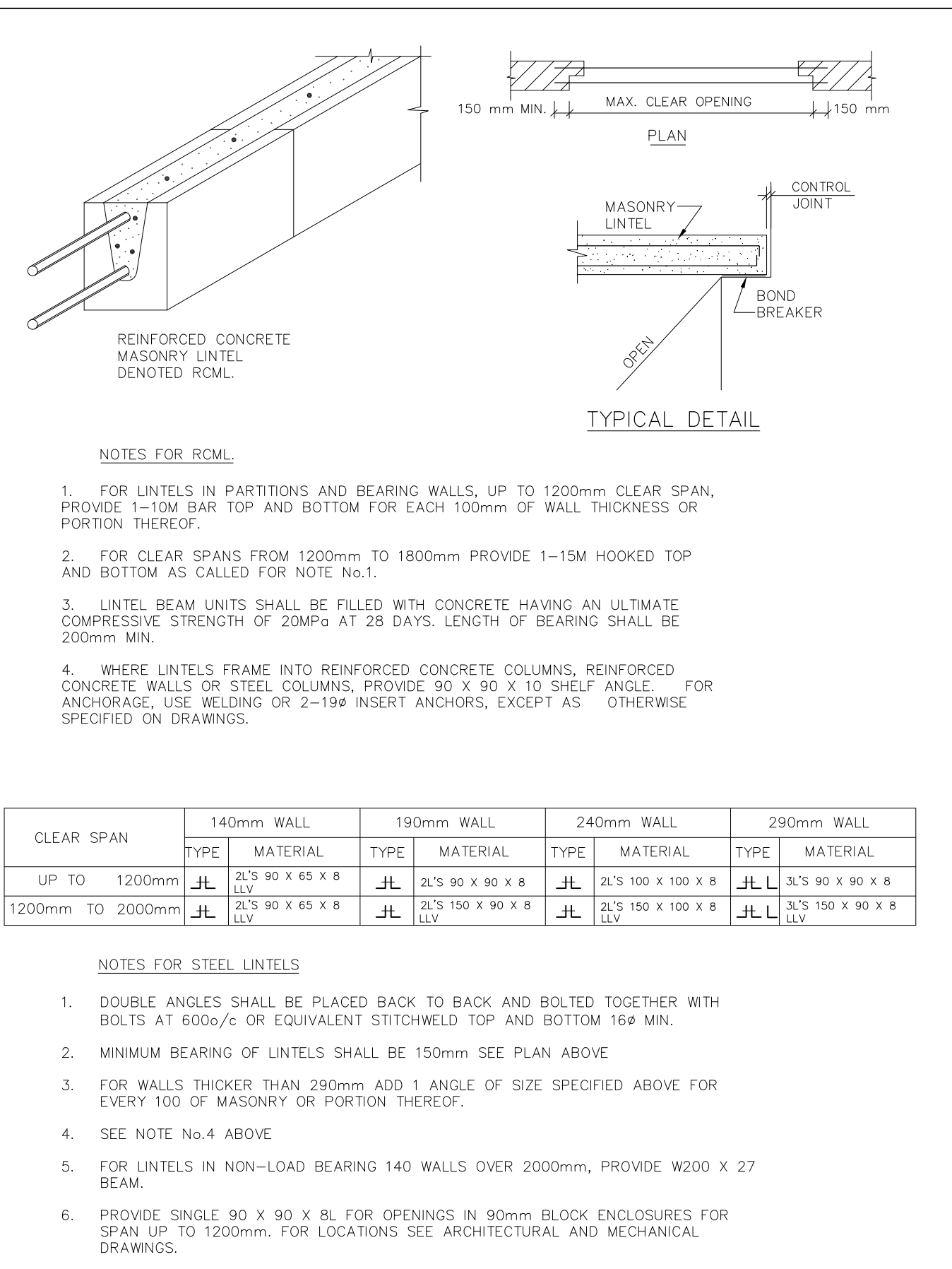
FOUNDATION & WALL DETAILS

2



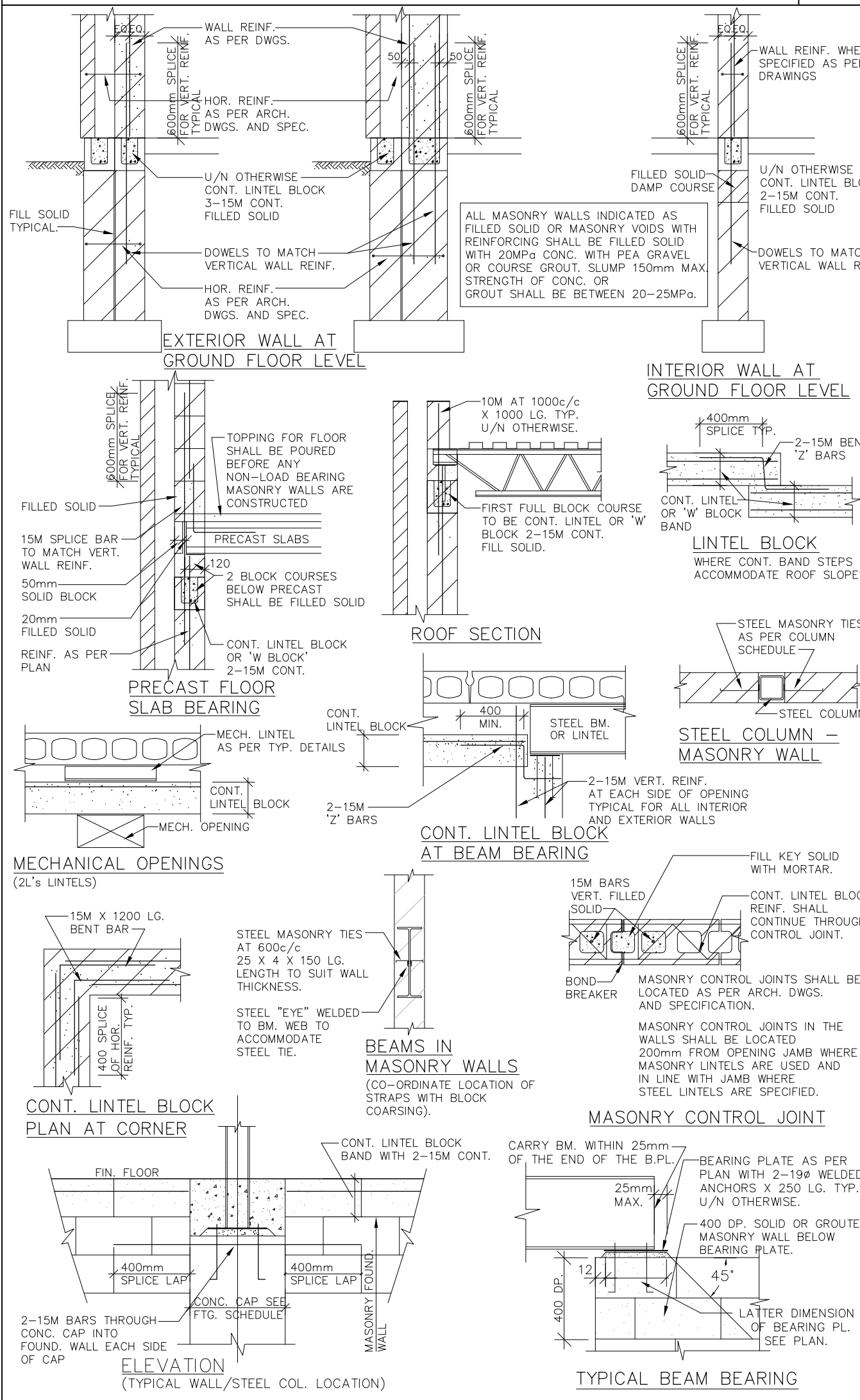
STRUCTURAL STEEL AND OPEN WEB STEEL JOIST DETAILS

3



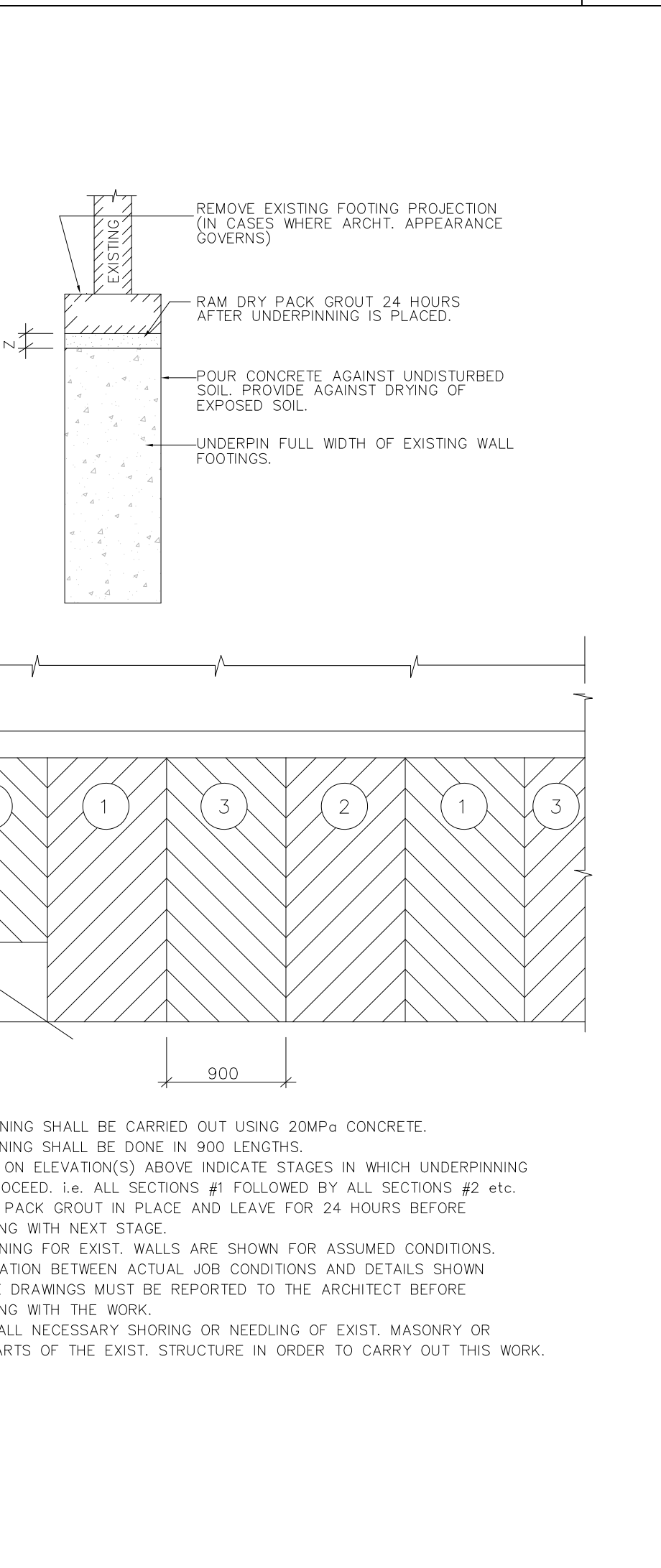
LINTEL DETAILS

4

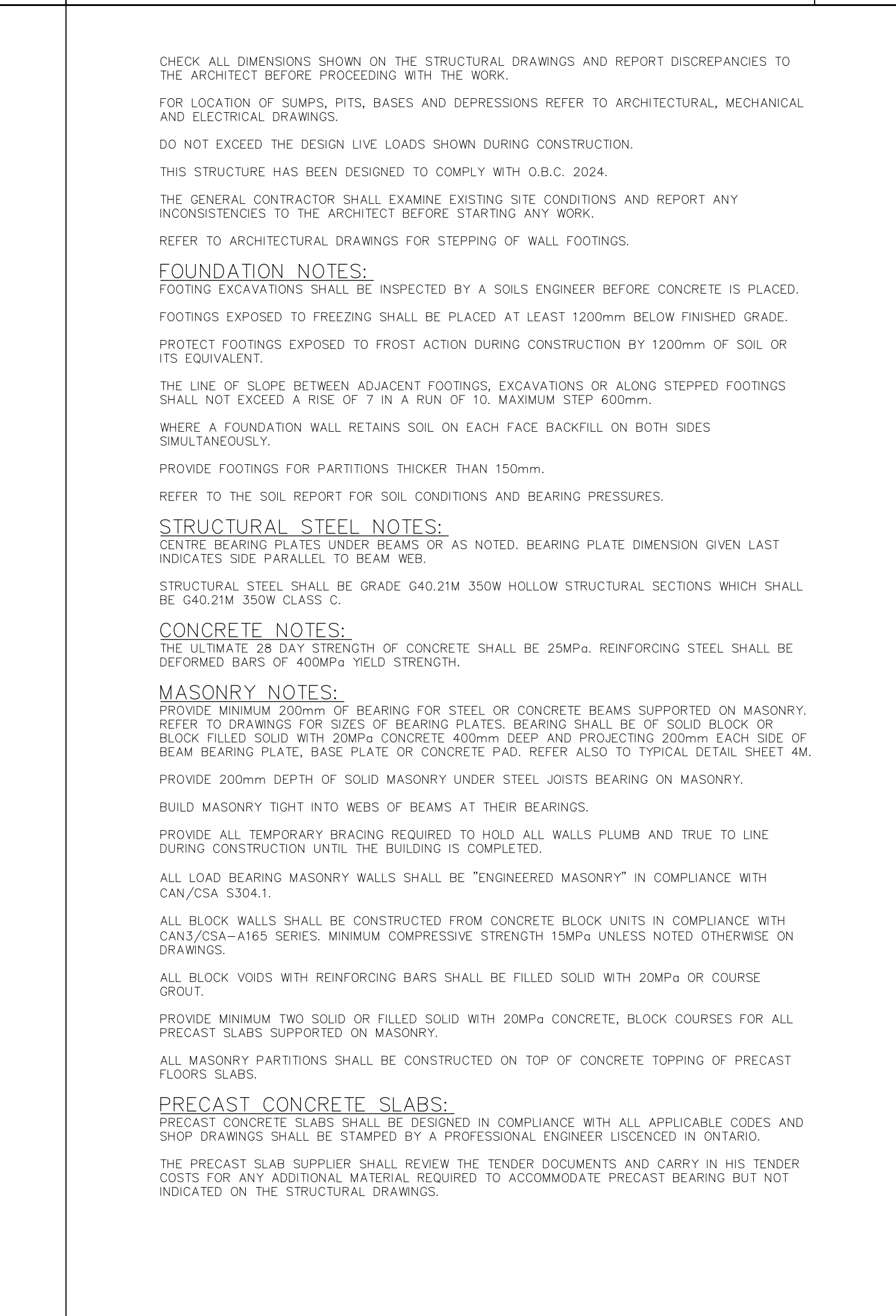


MASONRY DETAILS

UNDERPINNING



LINTELS FOR DUCTS AND SERVICES

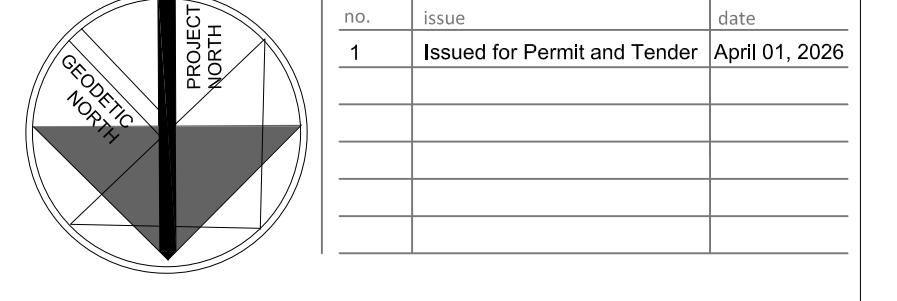


GENERAL NOTES

NOTE: THIS DRAWING IS NOT TO BE SCALED. THE CONTRACTOR IS RESPONSIBLE FOR THE VERIFICATION OF ALL SITE DIMENSIONS AND FOR NOTIFYING THE ARCHITECT OF ANY SITE CONDITIONS AND SITE MEASUREMENTS THAT ARE NOT CONSISTENT WITH THE DRAWINGS.

no.	revision	date

no.	issue	date
1	Issued for Permit and Tender	April 01, 2026



project
WRDSB PRESTON HIGH SCHOOL RENOVATIONS

WATERLOO REGION DISTRICT SCHOOL BOARD
550 ROSE ST., CAMBRIDGE, ON. N3H 2E6

drawing scale
GENERAL NOTES

NTS
 ward99 project number
25023 - WRDSB PRESTON FAMILY STUDIES AND CLASSROOM

drawing no.

VX
 VX ENGINEERING INC
 STRUCTURAL ENGINEERS

S4

VX ENGINEERING Inc.
 2500 - 135 Marlee Avenue
 Toronto, Ontario M6B 4C6
 416 670 9422 www.vxengineering.com