

ELECTRICAL LEGEND	
SYMBOL	DESCRIPTION
LINETYPES	
	NEW WORK
	WORK TO BE DEMOLISHED, OR REMOVED
	EXISTING MATERIAL/EQUIPMENT/SERVICES TO REMAIN
	FUTURE WORK (NOT IN SCOPE)
	EXTENTS OF FIRE ALARM ZONE, WET LOCATION, OR OTHER AREA AS NOTED ON PLANS
ABBREVIATIONS	
E	EXISTING TO REMAIN
R	EXISTING TO BE DEMOLISHED/REMOVED
ER	EXISTING IN RELOCATED POSITION
RR	REMOVE AND RELOCATE
C	CEILING MOUNTED CONNECTION
W	WALL MOUNTED CONNECTION
F	FLOOR MOUNTED CONNECTION
CL	CENTRE LINE
AF	ABOVE FINISHED FLOOR
AFG	ABOVE FINISHED GRADE
O/C	OVER COUNTER
U/C	UNDER CABINET
U/F	UNDER RAISED FLOOR
CKT	CIRCUIT
CTE	CONNECT TO EXISTING
AFCI	ARC FAULT CIRCUIT INTERRUPTER
GFCI	GROUND FAULT CIRCUIT INTERRUPTER
GFI	GROUND FAULT INTERRUPTER
IG	ISOLATED GROUND
TL	TWIST LOCK
TR	TAMPER RESISTANT
WG	WIRE GUARD
WP	WEATHER PROOF
XP	EXPLOSION PROOF
HL	HAZARDOUS LOCATION
RI	ROUGH-IN ONLY
NIC	NOT IN CONTRACT
SIM	SIMILAR TO
Typ.	TYPICAL
ABBREVIATIONS - CODES AND STANDARDS	
OBC	ONTARIO BUILDING CODE
OESC	ONTARIO ELECTRICAL SAFETY CODE
OFC	ONTARIO FIRE CODE
ABBREVIATIONS - CEILING TYPES	
ACT	ACOUSTIC CEILING TILE (T-BAR)
EXP	EXPOSED CEILING
GWB	GYPSONUM BOARD CEILING
OWSJ	OPEN WEB STEEL JOISTS
PCC	PAINTED OR POPCORN CEILING ON EXPOSED CONCRETE
WD	WOOD CEILING
ANNOTATIONS	
CL	CLOSET
WR	WASHROOM
PLUMBING	
BF	BOTTLE FILLING STATION
DHWT	DOMESTIC HOT WATER TANK
GI	OIL/GREASE INTERCEPTOR
TSP	ELECTRONIC TRAP SEAL PRIMER
PSC	PLUMBING SENSOR CONTROL (TOUCHLESS FAUCETS)
HVAC	
⊖	THERMOSTAT OR TEMPERATURE SENSOR
⊖	TIMER CONTROL
AHU	AIR HANDLING UNIT
B	BOILER
BAS	BUILDING AUTOMATION SYSTEM
BBH	ELECTRIC BASEBOARD HEATER (BBH)
CF	CEILING FAN
CND	CONDENSING UNIT
EF	EXHAUST FAN
ERV	ENERGY RECOVERY VENTILATOR
FCU	FAN COIL UNIT
FFH	FORCED FLOW HEATER
HFF	HANDS FREE FAUCET
HP	HEAT PUMP
HRU	HEAT RECOVERY UNIT
MJA	MAKE-UP AIR UNIT
P	PUMP
RH	RANGE HOOD
RTU	ROOF TOP UNIT
UH	UNIT HEATER
WF	WALL FAN
CONDUIT AND BOXES	
	CONDUIT WITH END BUSHING
	CONDUIT UP
	CONDUIT DOWN
	CONDUIT CONTINUES
	JUNCTION BOX
	PULL BOX
	HAND HOLE
THIS LEGEND IS GENERIC. ALL SYMBOLS LISTED MAY NOT BE APPLICABLE FOR THIS PROJECT. REFER TO FLOOR PLANS TO DETERMINE USED DEVICES AND EQUIPMENT.	

ELECTRICAL LEGEND	
SYMBOL	DESCRIPTION
CONNECTIONS TO EQUIPMENT	
DW	DISHWASHER
FR	FRIDGE
MW	MICROWAVE
HD	HAND DRYER, ALLOW UP TO 208V-1PH-20A
⊕	1-PHASE DIRECT CONNECTION OUTLET AS NOTED
⊕	3-PHASE DIRECT CONNECTION OUTLET AS NOTED
⊕	SYSTEM FURNITURE WALL FEED FOR POWER AND TELECOMMUNICATIONS UNLESS NOTED OTHERWISE, 'C' ADJACENT TO SYMBOL DENOTES CEILING FEED, 'F' ADJACENT TO SYMBOL DENOTES FLOOR FEED.
W	ADJACENT TO 3-PHASE DIRECT CONNECTION, DENOTES WALL SYSTEM FURNITURE FEED FOR POWER AND COMMUNICATIONS.
⊕	CONNECTION TO SINGLE PHASE MOTOR, HP (KW) AS NOTED. PROVIDE LOCAL DISCONNECT.
⊕	THREE PHASE MOTOR, HP (KW) AS NOTED. PROVIDE LOCAL DISCONNECT.
LIGHTING CONTROLS	
REFER TO SPECIFICATIONS AND RESPECTIVE SCHEDULES FOR EXACT REQUIREMENTS	
⊕	SWITCH OR OTHER USER INTERFACE DEVICE AS DESCRIBED ON LIGHTING CONTROLS SCHEDULE.
⊕	3-WAY SWITCH
⊕	ADJACENT TO SWITCH, DENOTES DIMMING SWITCH.
⊕	ADJACENT TO SWITCH, DENOTES KEY SWITCH.
⊕	ADJACENT TO SWITCH, DENOTES COUNTDOWN TIMER SWITCH
⊕	ADJACENT TO SWITCH, DENOTES ASTRONOMICAL TIMER SWITCH
⊕	ADJACENT TO SWITCH, DENOTES DOOR SWITCH
PIR	PASSIVE INFRARED SENSOR
DT	DUAL TECHNOLOGY SENSOR
UT	ULTRASONIC SENSOR
OS	SENSOR (TYPE UNKNOWN)
M	ADJACENT TO SWITCH, DENOTES MAIN CONTROL FOR ALL LUMINAIRES IN A ROOM OR SPACE, OR AS NOTED.
⊕	WALL MOUNTED SWITCH/OCCUPANCY SENSOR. PIR DENOTES 'PASSIVE INFRARED', DT DENOTES 'DUAL PASSIVE INFRARED/ULTRASONIC', LINE VOLTAGE TO SUIT CONTROLLED CIRCUIT, OR AS NOTED.
RP	RELAY PANEL
PP	POWER PACK
SC	SCENE CONTROLLER
⊕	PHOTOCELL SENSOR.
⊕	PHOTOCELL SENSOR. 'PC' DENOTES CLOSED LOOP PHOTOCELL CONTROL, 'PO' DENOTES OPEN LOOP PHOTOCELL CONTROL.
⊕	CEILING MOUNTED OCCUPANCY SENSOR. PIR DENOTES 'PASSIVE INFRARED', UT DENOTES 'ULTRASONIC' (OR MICROPHONIC), DT DENOTES 'DUAL TECHNOLOGY', 'OS' DENOTES UNKNOWN TECHNOLOGY.
⊕	WALL MOUNTED OCCUPANCY SENSOR.
DISTRIBUTION EQUIPMENT	
⊕	TRANSFORMER, PLAN VIEW
⊕	SURFACE MOUNTED LIGHTING AND RECEPTACLE PANELBOARD
⊕	RECESSED RECEPTACLE AND LIGHTING PANELBOARD
⊕	DISTRIBUTION PANELBOARD
⊕	DISCONNECT SWITCH
⊕	FUSED DISCONNECT SWITCH
⊕	CONTACTOR
⊕	LOOSE STARTER, COORDINATE STARTING CHARACTERISTIC WITH EQUIPMENT REQUIREMENTS.
⊕	COMBINATION STARTER.
VFD	ADJACENT TO STARTER, DENOTES VARIABLE FREQUENCY DRIVE
POWER RECEPTACLES AND BOXES	
⊕	120V U-GROUND DUPLEX RECEPTACLE.
⊕	120V U-GROUND DUPLEX RECEPTACLE MOUNTED ABOVE COUNTER TOP OR AS INSTRUCTED ON SITE.
⊕	120V U-GROUND 20A DUPLEX RECEPTACLE.
⊕	120V U-GROUND DUPLEX RECEPTACLE MOUNTED ABOVE COUNTER TOP OR AS INSTRUCTED ON SITE.
⊕	120V U-GROUND DUPLEX RECEPTACLE - AUTOMATICALLY CONTROLLED (ASHRAE 90.1-2013, 8.4.2).
⊕	120V U-GROUND 20A DUPLEX RECEPTACLE - AUTOMATICALLY CONTROLLED (ASHRAE 90.1-2013, 8.4.2).
⊕	120V U-GROUND DUPLEX RECEPTACLE - HALF OF RECEPTACLE AUTOMATICALLY CONTROLLED (ASHRAE 90.1-2013, 8.4.2).
⊕	SPLIT RECEPTACLE IF MANUALLY CONTROLLED, SHOWN CONNECTED TO SWITCH.
⊕	SPLIT RECEPTACLE MOUNTED ABOVE COUNTER TOP OR AS INSTRUCTED ON SITE.
⊕	120V U-GROUND QUAD RECEPTACLE.
⊕	INDICATES RECEPTACLE COMPLETE WITH ONE TYPE A AND ONE TYPE C USB CHARGING PORTS.
⊕	14-30R RECEPTACLE FOR LAUNDRY DRYER, OR OTHER RECEPTACLE AS NOTED.
⊕	14-50R RECEPTACLE FOR ELECTRIC RANGE, OR OTHER RECEPTACLE AS NOTED. PROVIDE 40A/2P BREAKER TO SUIT. MOUNT AT 130 mm AFF.
⊕	SPECIAL RECEPTACLE. VERIFY OUTLET REQUIREMENTS PRIOR TO ROUGH-IN.
⊕	SPECIAL RECEPTACLE. VERIFY OUTLET REQUIREMENTS PRIOR TO ROUGH-IN.
⊕	FLOOR RECEPTACLE OR RECEPTACLE IN FLOOR BOX (POWER ONLY)
THIS LEGEND IS GENERIC. ALL SYMBOLS LISTED MAY NOT BE APPLICABLE FOR THIS PROJECT. REFER TO FLOOR PLANS TO DETERMINE USED DEVICES AND EQUIPMENT.	

ELECTRICAL LEGEND	
SYMBOL	DESCRIPTION
⊕	SERVICE POLE. PROVIDE POWER TO JUNCTION BOX IN CEILING SPACE ABOVE. DEVICES ON POLE AS NOTED ON PLANS.
FB1	ADJACENT TO FLOOR RECEPTACLE. DENOTES FLOOR BOX TYPE
⊕	ADJACENT TO RECEPTACLE, DENOTES DEVICE CONNECTED TO EMERGENCY POWER
LIGHTING FIXTURES	
SYMBOLS IN ACCORDANCE WITH IES DG-349 AND IES HB-10-11 WHERE NOT DETAILED OTHERWISE HERE. REFER TO LIGHTING FIXTURE SCHEDULE FOR FURTHER DETAILS AND EXACT FIXTURE REQUIREMENTS	
⊕	LINEAR LUMINAIRE, SURFACE MOUNTED TO CEILING
⊕	LINEAR LUMINAIRE, RECESSED IN CEILING
⊕	LINEAR LUMINAIRE, SUSPENDED, PENDANT, CHAIN, STEM, OR AIRCRAFT CABLE HUNG TO SUIT APPLICATION, OR AS NOTED IN SCHEDULE. 'X', WHEN USED DENOTES POWER FEED LOCATION.
⊕	LINEAR LUMINAIRE, WALL MOUNTED
⊕	AS ABOVE, CONNECTED TO EMERGENCY OR NIGHT LIGHTING CIRCUIT AS INDICATED.
⊕	ROUND OR SQUARE DOWNLIGHT, RECESSED
⊕	RECESSED DOWNLIGHTS, CONNECTED TO EMERGENCY OR NIGHT LIGHT CIRCUIT
⊕	ROUND SUSPENDED LUMINAIRE
⊕	WALL SCONCE OR OTHER WALL MOUNTED LUMINAIRES.
EM	CONNECTED TO EMERGENCY NIGHT LIGHT CIRCUIT (24 HOUR)
CE	CONNECTED TO EMERGENCY CIRCUIT. PROVIDE CUL 92A LISTED SHUNT TRIP RELAY OR EQUAL TO PERMIT CONTROL OF LUMINAIRE WITH ZONING BASED ON LOCAL LIGHTING CONTROLS.
NL	LUMINAIRE CONNECTED TO NON-EMERGENCY NIGHT LIGHT CIRCUIT (24 HOUR)
A, B, Z1, Z2, ETC.	DENOTES ZONING/CIRCUITING ASSIGNMENTS FOR LUMINAIRES AND CONTROLS IN THE SAME SPACE.
EMERGENCY LIGHTING	
REFER TO EMERGENCY LIGHTING FIXTURE SCHEDULE FOR EXACT FIXTURE REQUIREMENTS.	
⊕	CEILING OR WALL MOUNTED SINGLE FACE ILLUMINATED EXIT SIGN. SHADED AREA INDICATES ILLUMINATED FACE. PROVIDE DIRECTIONAL ARROWS AS INDICATED ON PLANS.
⊕	CEILING OR WALL MOUNTED DUAL FACE ILLUMINATED EXIT SIGN. SHADED AREA INDICATES ILLUMINATED FACE. PROVIDE DIRECTIONAL ARROWS AS INDICATED ON PLANS.
⊕	WALL MOUNTED COMBINATION EXIT SIGN AND EMERGENCY LIGHTING BATTERY AND LAMPHEAD UNIT. SHADED AREA INDICATES ILLUMINATED FACE.
SL	DENOTES 'SELF-LUMINOUS' EXIT SIGN
PL	PHOTOLUMINOUS EXIT SIGN
⊕	EMERGENCY LIGHTING BATTERY UNIT, WITH AND WITHOUT HEADS.
⊕	ONE, TWO, AND THREE HEAD WALL MOUNTED EMERGENCY LIGHTING REMOTE UNITS.
⊕	ONE, TWO, AND THREE HEAD CEILING MOUNTED EMERGENCY LIGHTING REMOTE UNITS.
⊕	RECESSED EMERGENCY REMOTE HEAD.
EM	DENOTES "EMERGENCY"
CCT	CORRELATED COLOUR TEMPERATURE
CRI	COLOUR RENDERING INDEX
EXTERIOR LIGHTING	
⊕	ARM MOUNTED LUMINAIRE ON POLE. DIRECTIONAL ARROW, WHERE INDICATED DENOTES PRIMARY LUMEN ORIENTATION.
⊕	POST TOP LUMINAIRE ON POLE. DIRECTIONAL ARROW, WHERE INDICATED DENOTES PRIMARY LUMEN ORIENTATION.
⊕	LIGHTING BOLLARD. DIRECTIONAL ARROW, WHERE INDICATED DENOTES PRIMARY LUMEN ORIENTATION.
⊕	GROUND MOUNTED FLOOD LIGHT
TELECOMMUNICATIONS	
⊕	SYSTEM FURNITURE FEED
W	ADJACENT TO SYSTEM FURNITURE FEED, DENOTES WALL SYSTEM FURNITURE FEED FOR COMMUNICATIONS.
F	ADJACENT TO SYSTEM FURNITURE FEED, DENOTES FLOOR SYSTEM FURNITURE FEED FOR COMMUNICATIONS.
⊕	ADJACENT TO SYSTEM FURNITURE FEED, DENOTES CEILING SYSTEM FURNITURE FEED FOR COMMUNICATIONS (SERVICE POLE OR DROP CORD AS NOTED).
⊕	CABLE TRAY (LADDER TYPE)
⊕	CABLE TRAY (BASKET TYPE)
⊕	WALL MOUNTED DATA (D) OR VOICE (V) OUTLET. PROVIDE 1V AND 1D UNLESS NOTED OTHERWISE.
⊕	WALL MOUNTED VOICE (TELEPHONE) OUTLET. PROVIDE 1V UNLESS NOTED OTHERWISE.
⊕	WALL MOUNTED DATA OUTLET. PROVIDE 1D UNLESS NOTED OTHERWISE.
⊕	WALL MOUNTED TELEVISION OUTLET.
⊕	VOICE, DATA, OR TV OUTLET AS DESCRIBED ABOVE, MOUNTED ABOVE COUNTER TOP OR AS INSTRUCTED ON SITE.
B	ADJACENT TO COMMUNICATIONS OUTLET, INDICATES BLANK-OFF PLATE.
HDMI	HDMI OUTLET.
AVI	AUDIO VIDEO GANG, AS NOTED.
WAP	WIRELESS ACCESS POINT (WIFI).
⊕	AUDIO VISUAL SYSTEM SPEAKER, CEILING MOUNTED.
⊕	AUDIO/VISUAL SYSTEM SPEAKER, WALL MOUNTED.
⊕	PUBLIC ADDRESS SYSTEM SPEAKER, CEILING MOUNTED.
THIS LEGEND IS GENERIC. ALL SYMBOLS LISTED MAY NOT BE APPLICABLE FOR THIS PROJECT. REFER TO FLOOR PLANS TO DETERMINE USED DEVICES AND EQUIPMENT.	

ELECTRICAL LEGEND	
SYMBOL	DESCRIPTION
⊕	PUBLIC ADDRESS SYSTEM SPEAKER, WALL MOUNTED.
⊕	PUBLIC ADDRESS HORN SPEAKER WALL MOUNTED.
⊕	PUBLIC ADDRESS SYSTEM HANDSET
⊕	PUBLIC ADDRESS SYSTEM ADMIN CONTROL CONSOLE
⊕	PUBLIC ADDRESS SPEAKER VOLUME CONTROL SWITCH
⊕	INTERCOM
⊕	VIDEO INTERCOM SYSTEM DOOR CALL STATION
⊕	VIDEO INTERCOM SYSTEM MASTER STATION
IDC	INSULATION DISPLACEMENT CONNECTION
⊕	CLOCK
⊕	GPS CLOCK SYSTEM MAIN TRANSMITTER
⊕	GPS CLOCK SYSTEM GPS RECEIVER
⊕	GPS CLOCK SYSTEM SATELLITE TRANSMITTER (REPEATER)
⊕	GPS CLOCK SYSTEM RECEIVER SWITCH
ACCESS CONTROL AND DOOR HARDWARE	
⊕	CARD READER
⊕	DOOR ALARM SOUNDER
⊕	DOOR CONTACT
⊕	OVERHEAD DOOR CONTACT
⊕	ELECTRIC LATCH
⊕	ELECTRIC STRIKE
⊕	ELECTRIC POWER TRANSFER CABLE
⊕	POWER TRANSFER HINGE
⊕	KEY SWITCH
⊕	ELECTROMAGNETIC LOCK
⊕	MOTORIZED LATCH RETRACTION. PROVIDE 120 V.
⊕	REQUEST TO EXIT SENSOR
⊕	MUSHROOM HEAD PUSH BUTTON FOR 'REQUEST TO EXIT' MAGLOCK RELEASE, OR OTHER PUSH BUTTON AS INDICATED
⊕	DOOR RELEASE ADJACENT TO THE ABOVE, PUSHBUTTON INTEGRATED WITH ELECTRIC DOOR HARDWARE DEVICE.
⊕	BARRIER FREE DOOR OPERATOR PUSH BUTTON
⊕	TOUCHLESS "WAVE SWITCH" FOR DOOR OPERATOR CONTROL
⊕	DOOR BELL C/W SOUNDER AND STROBE
⊕	DOOR BELL (SOUNDER ONLY)
INTRUSION DETECTION	
⊕	GLASS BREAK (GB)
⊕	MOTION DETECTOR (MD)
⊕	KEYPAD (KP)
VIDEO SURVEILLANCE	
⊕	CCTV CAMERA
⊕	CCTV CAMERA, CEILING OR POLE MOUNTED
⊕	CCTV CAMERA, WALL MOUNTED
⊕	PAN-TILT-ZOOM
DURESS SYSTEM	
⊕	DURESS BUTTON (MOUNTED ON UNDERSIDE OF TABLETOP)
⊕	WALL MOUNTED DURESS BUTTON WITH POLYCARBONATE ANTI-TAMPER COVER
⊕	DURESS SYSTEM STROBE LIGHT
FIRE DETECTION AND ALARM - GENERAL	
CACF	CENTRAL ALARM AND CONTROL FACILITY
DCC	DISPLAY CONTROL PANEL
FACP	FIRE ALARM CONTROL PANEL
FATP	FIRE ALARM TRANSDUCER PANEL
FAAP	FIRE ALARM ANNUNCIATOR PANEL
FAAG	FIRE ALARM ACTIVE ANNUNCIATOR C/W GRAPHIC
FAPG	FIRE ALARM PASSIVE GRAPHIC
FAMP	FIRE ALARM ULC MONITORING PANEL
FAZ	FIRE ALARM ZONE
FSZ	FIRE ALARM SUPERVISORY ZONE
FDSPCP	FIRE DETECTION, SUPPRESSION, AND PRE-ACTION CONTROL PANEL
FDSCP	FIRE DETECTION AND SUPPRESSION CONTROL PANEL
⊕	FIRE ALARM PANEL (FACP, FAAP, FAMP) AS DENOTED ON PLANS.
FIRE DETECTION - INITIATION DEVICES	
⊕	MANUAL PULL STATION (MPS)
LX	WHERE NOTED ADJACENT TO MANUAL PULL STATIONS, DENOTES PULL STATION C/W POLYCARBONATE (LEXAN) COVER.
WG	WHERE NOTED ADJACENT TO MANUAL PULL STATIONS, DENOTES PULL STATION C/W WIRE GUARD COVER.
A	WHERE NOTED ADJACENT TO MANUAL PULL STATIONS OR DETECTOR, DENOTES DEVICE C/W AUXILIARY CONTACT.
⊕	PHOTOELECTRIC SMOKE DETECTOR
⊕	SAME AS ABOVE, WALL MOUNTED
⊕	WHEN ADJACENT TO PHOTOELECTRIC SMOKE DETECTOR, INDICATES RESIDENTIAL SMOKE ALARM
SA	RESIDENTIAL SMOKE ALARM, 120 VOLT, COMPLETE WITH STROBE AND INTEGRAL CARBON MONOXIDE DETECTION.
⊕	SAME AS ABOVE, WALL MOUNTED
⊕	DUCT MOUNTED SMOKE DETECTOR
CO	CARBON MONOXIDE DETECTOR
VESDA	VERY EARLY SMOKE DETECTING APPARATUS
BSDT	BEAM SMOKE DETECTOR TRANSMITTER
BSDR	BEAM SMOKE DETECTOR RECEIVER (OR REFLECTOR)
THIS LEGEND IS GENERIC. ALL SYMBOLS LISTED MAY NOT BE APPLICABLE FOR THIS PROJECT. REFER TO FLOOR PLANS TO DETERMINE USED DEVICES AND EQUIPMENT.	

ELECTRICAL LEGEND	
SYMBOL	DESCRIPTION
ASD	ASPIRATING SMOKE DETECTOR
⊕	HEAT DETECTOR - 58 DEGREES C (135 DEGREES F) FIXED TEMPERATURE AND RATE OF RISE, RESTORABLE
⊕	SAME AS ABOVE, WALL MOUNTED
HT	ADJACENT TO HEAT DETECTOR, DENOTES "HIGH TEMPERATURE", 94 DEGREES C (200 DEGREES F) OR AS NOTED ON PLANS.
LHD	ADJACENT TO HEAT DETECTOR SYMBOL, DENOTES "LINEAR HEAT DETECTION CABLE".
⊕	HEAT DETECTOR - 58 DEGREES C (135 DEGREES F) FIXED TEMPERATURE, NON-RESTORABLE
⊕	HEAT DETECTOR - 94 DEGREES C (200 DEGREES F) FIXED TEMPERATURE, NON-RESTORABLE
⊕	LINEAR HEAT DETECTION CABLE
⊕	FLOW SWITCH
FIRE DETECTION AND ALARM - SUPERVISORY DEVICES	
⊕	LOW TANK LEVEL
⊕	LOSS OF POWER
⊕	LOW TEMPERATURE
⊕	PRESSURE SWITCH
⊕	SUPERVISED VALVE
⊕	FIRE ALARM MONITORING POINT, REFER TO FLOOR PLANS FOR DETAILS.
⊕	FIRE ALARM HORN
⊕	ADJACENT TO FIRE ALARM HORN, DENOTES 'MINI' HORN
⊕	FIRE ALARM HORN/STROBE, WALL MOUNTED.
⊕	FIRE ALARM EVACUATION SPEAKER, CEILING MOUNTED
⊕	FIRE ALARM EVACUATION SPEAKER, COMPLETE WITH STROBE LIGHT, CEILING MOUNTED
⊕	FIRE ALARM EVACUATION SPEAKER, WALL MOUNTED
⊕	FIRE ALARM EVACUATION SPEAKER COMPLETE WITH STROBE LIGHT, WALL MOUNTED
⊕	SILENCE SWITCH
⊕	FIRE ALARM WALL MOUNTED STROBE LIGHT
FIRE DETECTION AND ALARM - VOICE COMMUNICATION DEVICES	
⊕	EMERGENCY TELEPHONE FOR FIREFIGHTERS' USE
FIRE DETECTION AND ALARM - OTHER DEVICES	
⊕	END OF LINE DEVICE
WG	WIRE GUARD
DNE	"DO NOT ENTER" SIGN
⊕	KEY SWITCH FOR FIREFIGHTER CONTROL OF ELEVATOR RECALL, OR AS NOTED
⊕	ISOLATOR MODULE
⊕	OUTPUT RELAY, FUNCTION AS INDICATED
⊕	CONTROL MODULE
⊕	MONITOR MODULE
⊕	MAGNETIC DOOR HOLDER AND RELEASING DEVICE ("HOLD OPEN")
⊕	FIRE SUPPRESSION RELEASING STATION
⊕	FIRE SUPPRESSION ABORT STATION
SINGLE LINE DIAGRAM	
⊕	AIR CIRCUIT BREAKER
⊕	MOLDED CASE CIRCUIT BREAKER
⊕	DISCONNECT (UNFUSED)
⊕	DISCONNECT (FUSED)
⊕	FUSE
⊕	METERING CABINET
⊕	BUS DUCT
TRANSFORMER	
⊕	GENERATOR
⊕	AUTOMATIC TRANSFER SWITCH
⊕	AUTOMATIC TRANSFER SWITCH
⊕	AUTOMATIC TRANSFER SWITCH C/W SINGLE SIDED BYPASS ISOLATION
⊕	AUTOMATIC TRANSFER SWITCH C/W DOUBLE SIDED BYPASS ISOLATION
ATS	AUTOMATIC TRANSFER SWITCH
C	CONTACTOR
DP	DISTRIBUTION PANELBOARD
FTL	FEED THROUGH PANELBOARD
LP	LIGHTING PANELBOARD
LSI	LONG TIME / SHORT TIME / INSTANTANEOUS
LSIG	LONG TIME / SHORT TIME / INSTANTANEOUS / GROUND FAULT
MCB	MOBILE CONNECTION BOX
MCC	MOBILE CONTROL CENTRE
MTS	MANUAL TRANSFER SWITCH
THIS LEGEND IS GENERIC. ALL SYMBOLS LISTED MAY NOT BE APPLICABLE FOR THIS PROJECT. REFER TO FLOOR PLANS TO DETERMINE USED DEVICES AND EQUIPMENT.	

ELECTRICAL LEGEND	
SYMBOL	DESCRIPTION
PP	POWER PANELBOARD
RP	RECEPTACLE PANELBOARD
SPD	SURGE PROTECTIVE DEVICE
STS	STATIC TRANSFER SWITCH
SWB	SWITCHBOARD
SWG	SWITCHGEAR
TX	TRANSFORMER
UPS	UNINTERRUPTIBLE POWER SUPPLY
HEALTHCARE POWER	
⊕	CEILING COLUMN TYPE ISOLATED POWER CENTRE WITH MECHANICAL AND ELECTRICAL SERVICES. 'A' DENOTES TYPE AS SCHEDULED ON DRAWINGS OR SPECIFICATIONS.
⊕	LINE ISOLATION MONITORING FOR ISOLATED POWER CENTRES.
⊕	SLAVE MODULE FOR ISOLATED POWER CENTRES, TYPES AS SCHEDULED ON DRAWINGS.
⊕	REMOTE ALARM PANEL FOR ADJACENT ISOLATED POWER CENTRE.
⊕	CENTRALLY LOCATED REMOTE ALARM STATION FOR ISOLATED POWER CENTRES. SEE SCHEDULE.
⊕	GROUND JACK TO FOR ISOLATED POWER SYSTEM
⊕	DOUBLE GROUND JACK FOR ISOLATED POWER SYSTEM
⊕	MEDICAL GAS ALARM PANEL
⊕	MEDICAL GAS CONTROL PANEL

ELECTRICAL SCOPE OF WORK:

1. LIGHTING

- 1.1 ANTI LIGATURE LIGHT FIXTURES HAVE BEEN SPECIFIED.
- 1.2 EXISTING SITE CONDITION: EMERGENCY LIGHTING IS 347V, NORMAL LIGHTING IS 120V. PROVIDE FOR SUFFICIENT ON INVESTIGATION TIME REQUIRED IDENTIFY, TAG AND TRACE CIRCUITS, AS REQUIRED DETERMINE EXACT FIXTURE WHICH ARE 347V.
- 1.3 PROPOSED: 120V EMERGENCY LIGHTING. SEE SLD FOR FURTHER DETAIL.
- 1.4 THE REMAINING FLOOR AREA WHICH IS OUTSIDE OF THE SCOPE WORKS AREA WILL REMAIN 347V EMERGENCY LIGHTING.
- 1.5 LIGHTING CONTROL: - EMERGENCY LIGHTING WILL REMAIN ON 24/7 THROUGHOUT ALL COMMON SPACES. I.E. EXCLUDING BEDROOMS.
- 1.6 LIGHTING CONTROL: - IN ALL AREAS, PROVIDE ANTI LIGATURE TYPE, LIGHT SWITCHES, DIMMABLE LIGHT FIXTURES SHALL BE PROVIDED. FINAL LOCATION OF ALL LIGHT SWITCHES SHALL BE CONFIRMED WITH THE ARCHITECT, PRIOR TO ROUGH-IN.
- 1.7 EXISTING "SANUVOX" LIGHT SYSTEM IN THE WASHROOMS ON THIS PROJECT SHALL REMAIN.

2. POWER

- 2.1 ALL RECEPTACLES, EXISTING & NEW, SHALL BE REPLACED WITH NEW TAMPERPROOF HOSPITAL GRADE RECEPTACLES.
- 2.2 PROVIDE FOR VOLT DROP TO MEET Z-32 VOLTAGE DROP REQUIREMENTS. I.E. GREATER THAN THE MINIMUM, CABLE SIZES SHALL BE PROVIDED TO ACCOMMODATE FOR VOLTAGE DROP REQUIREMENT AS SET OUT IN Z-32.
- 2.3 PROVIDE MINIMUM #12AWG GROUNDING WIRE SIZE.
- 2.4 3RD PARTY Z-32 TESTING SHALL BE PROVIDED.

3. ACCESS CONTROL

- 3.1 PROVIDE RUGGED SMART CARD READERS BY ESSEX ELECTRONICS (KEYLESS.COM).
- 3.2 PROVIDE REQUEST TO EXIT BUTTON & MOTION DETECTOR; FROM SECURE SIDE OF THE ROOM, REQUEST TO EXIT BUTTON & MOTION DETECTION WILL ALLOWS USER TO EXIT THE ROOM.
- 3.3 PROVIDE VANDAL RESISTANT AND ANTI-LIGATURE TYPE PUSH TO OPEN / EXIT BUTTON IS REQUIRED FOR AUTOMATIC DOOR OPERATORS?
- 3.4 THE EXISTING SYSTEM IS BEING MAINTAINED BY AC TECH - CONTACT INFO ROBERT HERN: TEL: 905-666-8676

4. CCTV CAMERA

- 4.1 ANTI LIGATURE / VANDAL PROOF CAMERA SHALL BE PROVIDED. (5MP MINIMUM)
- 4.2 THE EXISTING SYSTEM IS INSTALLED BY JCI BUT CURRENTLY BEING MAINTAINED BY AC TECH - CONTACT INFO ROBERT HERN: TEL: 905-666-8676

5. NURSE CALL

- 5.1 EXISTING NURSE CALL STATION ARE OF APPROVED QUALITY AND CAN REMAIN IN ITS EXISTING POSITION.
- 5.2 EXISTING SYSTEM TO BE EXTENDED WITH ANTI LIGATURE COMPONENTS.
- 5.3 IN LIEU OF PULL CORDS, PROVIDE PUSH BUTTON TYPE CONTROL, E.G. LIGHTING CONTROL BY BED, NURSE CALL BY BED?

6. ADDRESSABLE TWO STAGE FIRE ALARM SYSTEM

- 6.1 MAINTAINED BY ONYX FIRE: TEL: 416 674 5633
- 6.2 ANTI LIGATURE CEILING MOUNTED SMOKE DETECTOR WILL BE PROVIDED. SMOKE DETECTOR WITHIN BEDROOM SHALL BE PROVIDED RELAYS.
- 6.3 VANDAL RESISTANT FIRE ALARM SPEAKER WITH ANTI-LIGATURE MOUNT WILL BE PROVIDED.
- 6.4 STROBES HAVE BEEN PROVIDED BOTH IN BEDROOMS AND IN CORRIDORS.
- 6.5 PROVIDE SAFETY COVER FOR FIRE ALARM DEVICES SUITABLE FOR THIS TYPE OF PROJECT.
- 6.6 PROVIDE FIRE ALARM ANNUNCIATOR BY NURSE STATION TO CAPTURE ALL SMOKE DETECTION FOR THE FLOOR AREA.

7. WIRELESS ACCESS POINT

- 7.1 CAT 6 DATA WILL BE PROVIDED, WAP EQUIPMENT TO BE FREE ISSUED BY CLIENT, AND INSTALLED BY ELECTRICAL CONTRACTOR. ALLOW FOR UP 5M SLACK AT WAP LOCATIONS.

8. DATA/VOICE

- 8.1 CAT 6 CABLE SHALL BE PROVIDED.
- 8.2 PROVIDE ANTI-LIGATURE VOICE/DATA OUTLETS WILL IN ALL AREAS.

9. PUBLIC ADDRESS SPEAKER (PA)

- 9.1 PROVIDE VANDAL RESISTANT PA SPEAKER WITH ANTI LIGATURE MOUNT IS REQUIRED?

10. STAFF PANIC BUTTONS

- 10.1 PROVIDE FOR INSTALLATION STAFF PANIC BUTTONS IN ALL ROOMS. (SEPARATE PRICE).

11. REAL TIME LOCATION SERVICES (RTLs)

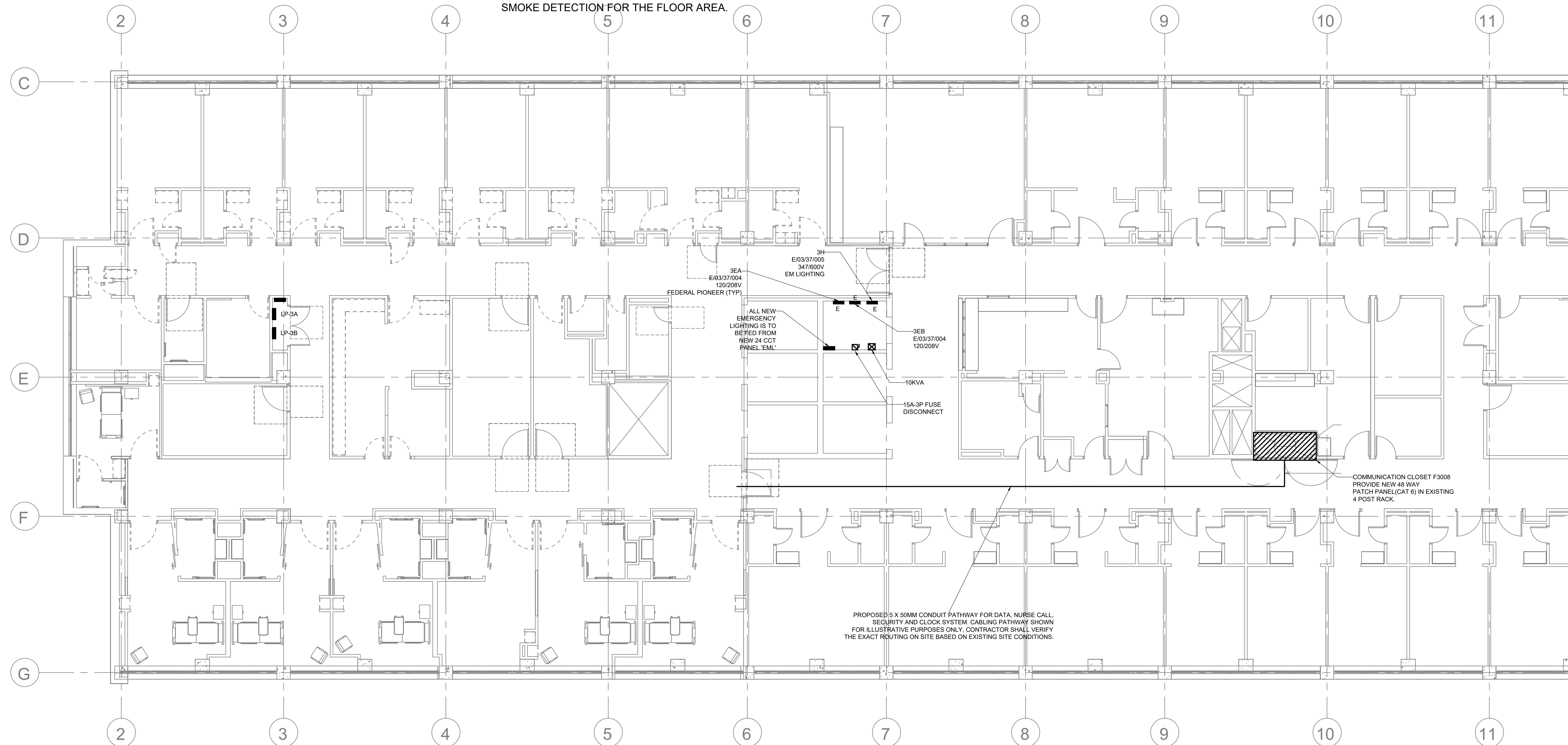
- 11.1 NONE.

12. TV

- 12.1 EXISTING COAXIAL CABLE SHALL REMAIN.
- 12.2 ANTI-LIGATURE TYPE TV WILL BE PROVIDED AND CONNECTED TO THE COAXIAL PORT FOR PROPER FUNCTION, PROVIDE TAMPERPROOF COVER.

13. HEAD WALL UNIT

- 13.1 EXISTING HEAD WALL UNIT SHALL REMAIN
- 13.2 THE EXISTING RECEPTACLES SHALL BE REPLACED WITH NEW TAMPER PROOF HOSPITAL GRADE RECEPTACLES.
- 13.3 DATA AND RECEPTACLES TO BE ADDED TO EXISTING WALL UNIT, AS SHOWN ON THE DRAWINGS.



250 ROWNTREE DAIRY RD, WOODBRIDGE, ON
 TEL: 905-507-0800
 WEB: WWW.QUASARCG.COM

C& Partners Architects Inc.

720 Bathurst st. Toronto, ON M5R 2S4
 T 416-825-7910
 E info@candpartnersinc.com
 W www.candpartnersinc.com



STAMP

NO.	DESCRIPTION	DATE
1	ISSUED FOR PERMIT	2025-06-25
2	RE-ISSUED FOR PERMIT	2025-09-12
3	ISSUED FOR TENDER	2025-09-19

HRH Behavioural Unit

2111 Finch Ave W., North York, ON
 M3N 1N1

SITE PLAN

PROJECT NUMBER: HC-25-054

DATE: MAY 30, 2025

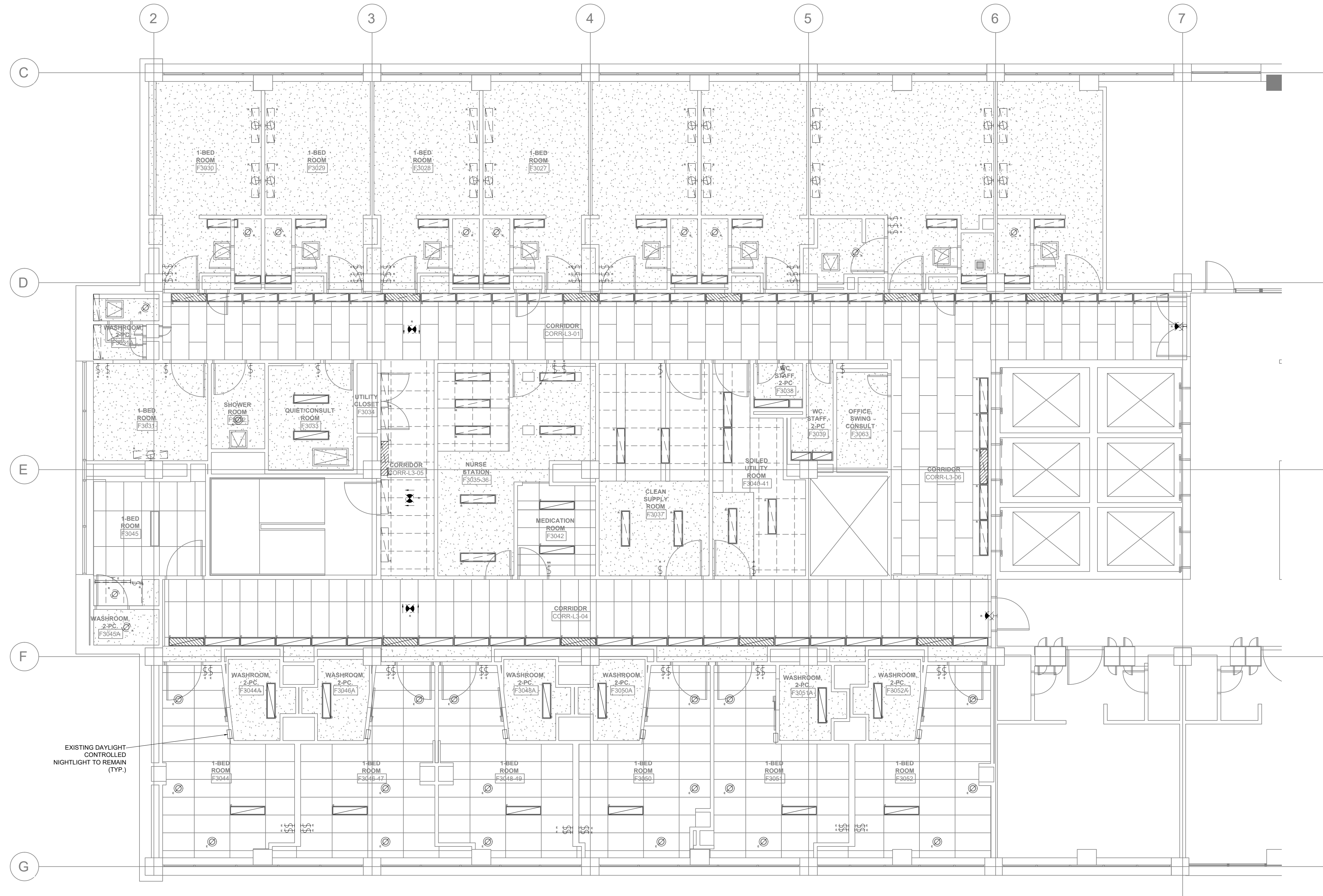
SCALE: As indicated

SHEET NUMBER:

E-100

NOTES - LIGHTING DEMOLITION

1. ELECTRICAL EQUIPMENT REMOVED MUST BE ISOLATED AND DISCONNECTED AT THE SOURCE PRIOR TO REMOVAL OPERATIONS. DURING ISOLATION AND DISCONNECTION PROCEDURES DANGER TAGS MUST BE USED TO IDENTIFY ANY FEEDERS OR EQUIPMENT REMAINING ENERGIZED TO ACCOMMODATE NEW CONSTRUCTION. UPDATE TYPE WRITTEN PANEL BOARD DIRECTORIES TO REFLECT 'SPARES' FOR CIRCUITS BEING DEMOLISHED
2. ALL WIRING AND CONDUIT FOR EXISTING ELECTRICAL EQUIPMENT BEING REMOVED MUST BE CAPPED OFF UNLESS SPECIFICALLY DESIGNATED FOR REUSE, RELOCATION, OR REINSTALLATION, OR PRIOR WRITTEN APPROVAL HAS BEEN RECEIVED FROM CONSULTANT. ALL REDUNDANT CABLING SHALL BE REMOVED FROM SPACE
3. CONTRACTOR TO COMPLETE SITE VISIT IN ORDER TO VERIFY EXISTING SITE CONDITIONS AND DEVICES PRIOR TO ANY WORKS. ALL CIRCUIT REFERENCES TO BE SITE VERIFIED USING CIRCUIT TESTER AND PANEL SCHEDULES TO BE UPDATED ACCORDINGLY.
4. EXISTING FIRE ALARM CIRCUITING PASSING THROUGH THE DEMOLITION SCOPE AREA TO BE PROTECTED DURING DEMOLITION PHASE.
5. PROTECT EXISTING TO REMAIN EQUIPMENT DURING DEMOLITIONS PHASE. PROVIDE TEMPORARY SUPPORT AS REQUIRED AND REINSTALL AS PER NEW CEILING LAYOUT; SEE ARCHITECTURAL DRAWING FOR FURTHER DETAIL. CONTRACTOR SHALL ENSURE THAT EXISTING SERVICES ON THIS LEVEL WHICH SERVE AREAS OUTSIDE OF THE SCOPE ARE DIVERTED OR AVOIDED DURING CONSTRUCTION.
6. DEMOLITION OF ALL ELECTRICAL SERVICES, DEVICES AND EQUIPMENT SHALL BE COORDINATED WITH OWNER AND MADE SAFE AND GOOD. COORDINATE ALL DEMOLITION WORKS ON SITE BASED ON SITE CONDITIONS.
7. NOT ALL EXISTING EQUIPMENT IS SHOWN ON THE LIGHT LAYOUT. EXISTING EQUIPMENT TO REMAIN, UNLESS OTHERWISE REQUESTED BY PROJECT ADMINISTRATOR OR SHOWN ON THE DRAWING.



1 LIGHTING - DEMOLITION PLAN
SCALE: 1:75



250 ROWNTREE DAIRY RD, WOODBRIDGE, ON
TEL: 905-507-0800
WEB: WWW.QUASARCG.COM

C& Partners Architects Inc.

720 Bathurst st. Toronto, ON M5R 2S4
T 416-825-7910
E info@candpartnersinc.com
W www.candpartnersinc.com



STAMP

NO.	DESCRIPTION	DATE
1	ISSUED FOR PERMIT	2025-06-25
2	RE-ISSUED FOR PERMIT	2025-09-12
3	ISSUED FOR TENDER	2025-09-19

HRH Behavioural Unit

2111 Finch Ave W., North York, ON
M3N 1N1

LIGHTING - DEMOLITION
PLAN

PROJECT NUMBER: HC-25-054

DATE: MAY 30, 2025

SCALE: As indicated

SHEET NUMBER:

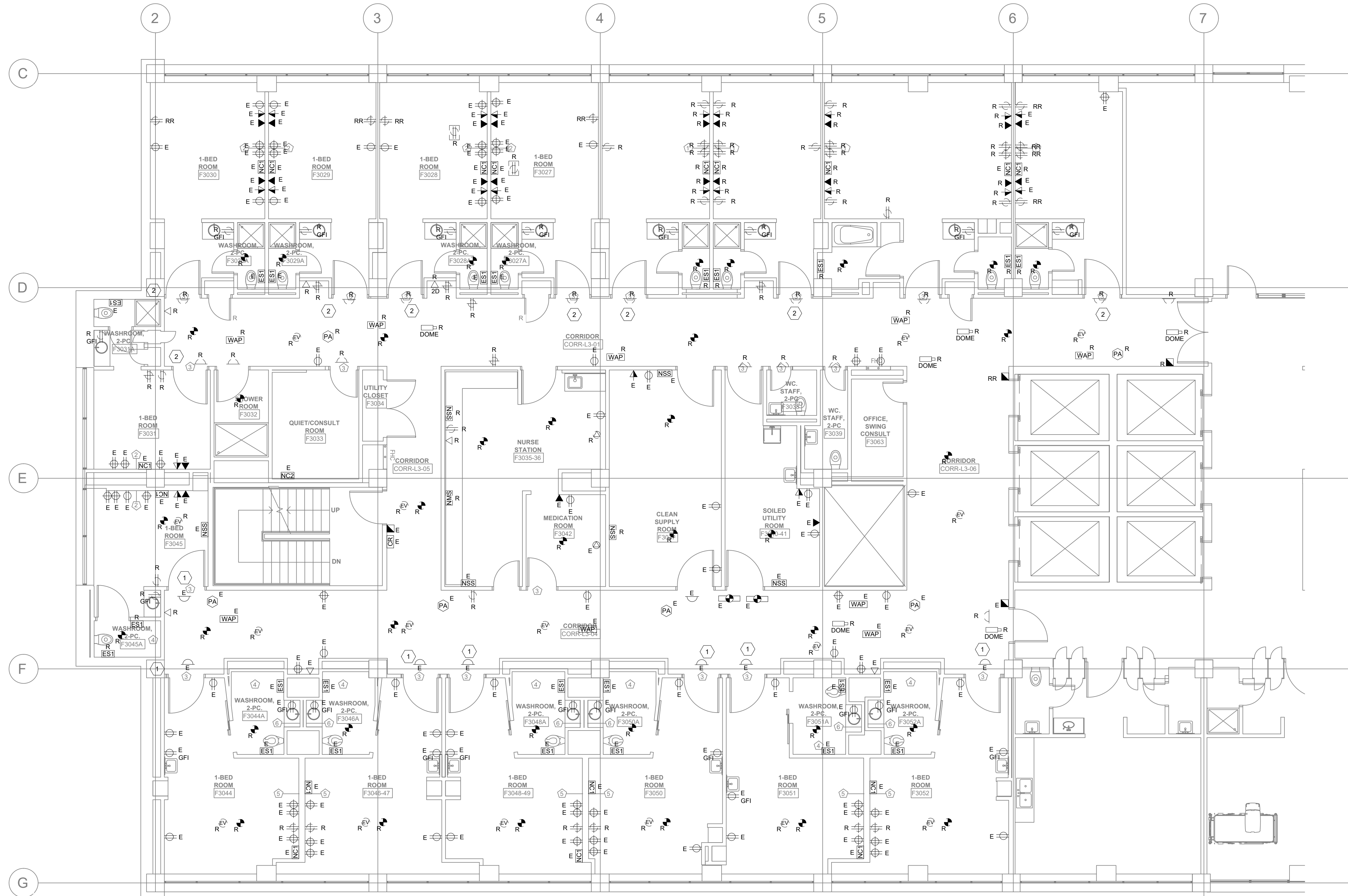
E-200

NOTES - POWER AND SYSTEMS DEMOLITION

1. ELECTRICAL EQUIPMENT REMOVED MUST BE ISOLATED AND DISCONNECTED AT THE SOURCE PRIOR TO REMOVAL OPERATIONS. DURING ISOLATION AND DISCONNECTION PROCEDURES DANGER TAGS MUST BE USED TO IDENTIFY ANY FEEDERS OR EQUIPMENT REMAINING ENERGIZED TO ACCOMMODATE NEW CONSTRUCTION. UPDATE TYPE WRITTEN PANEL BOARD DIRECTORIES TO REFLECT 'SPARES' FOR CIRCUITS BEING DEMOLISHED
2. ALL WIRING AND CONDUIT FOR EXISTING ELECTRICAL EQUIPMENT BEING REMOVED MUST BE CAPPED OFF UNLESS SPECIFICALLY DESIGNATED FOR REUSE, RELOCATION, OR REINSTALLATION, OR PRIOR WRITTEN APPROVAL HAS BEEN RECEIVED FROM CONSULTANT. ALL REDUNDANT CABLING SHALL BE REMOVED FROM SPACE
3. CONTRACTOR TO COMPLETE SITE VISIT IN ORDER TO VERIFY EXISTING SITE CONDITIONS AND DEVICES PRIOR TO ANY WORKS. ALL CIRCUIT REFERENCES TO BE SITE VERIFIED USING CIRCUIT TESTER AND PANEL SCHEDULES TO BE UPDATED ACCORDINGLY.
4. EXISTING FIRE ALARM SYSTEM IS EDWARDS. EXISTING CIRCUITING PASSING THROUGH THE DEMOLITION SCOPE AREA TO BE PROTECTED DURING DEMOLITION PHASE.
5. PROTECT EXISTING TO REMAIN EQUIPMENT DURING DEMOLITIONS PHASE. PROVIDE TEMPORARY SUPPORT AS REQUIRED AND REINSTALL AS PER NEW CEILING LAYOUT. SEE ARCHITECTURAL DRAWING FOR FURTHER DETAIL. CONTRACTOR SHALL ENSURE THAT EXISTING SERVICES ON THIS LEVEL WHICH SERVE AREAS OUTSIDE OF THE SCOPE ARE DIVERTED OR AVOIDED DURING CONSTRUCTION.
6. DEMOLITION OF ALL ELECTRICAL SERVICES, DEVICES AND EQUIPMENT SHALL BE COORDINATED WITH OWNER AND MADE SAFE AND GOOD. COORDINATE ALL DEMOLITION WORKS ON SITE BASED ON SITE CONDITIONS.
7. REFER TO E-901 FOR THE GENERAL NOTES PERTAINING TO CCTV SYSTEM, ACCESS CONTROL SYSTEM, SECURITY SYSTEM, AND FIRE ALARM.
8. NOT ALL EXISTING EQUIPMENT IS SHOWN ON THIS LAYOUT. EXISTING EQUIPMENT TO REMAIN, UNLESS OTHERWISE REQUESTED BY PROJECT ADMINISTRATOR OR SHOWN IN THE DRAWING.

KEYNOTES - POWER AND SYSTEMS NEW WORK

- 1 "WASHROOM IN USE" LIGHT. EXISTING TO REMAIN.
- 2 "WASHROOM IN USE" LIGHT. EXISTING TO BE REMOVED.



1 E-300 POWER & SYSTEMS - DEMOLITION PLAN
SCALE: 1:75



250 ROWNTREE DAIRY RD, WOODBRIDGE, ON
TEL: 905-507-0800
WEB: WWW.QUASARCG.COM

C& Partners Architects Inc.

720 Bathurst st. Toronto, ON M5R 2S4
T 416-825-7910
E info@candpartnersinc.com
W www.candpartnersinc.com



STAMP

NO.	DESCRIPTION	DATE
1	ISSUED FOR PERMIT	2025-06-25
2	RE-ISSUED FOR PERMIT	2025-09-12
3	ISSUED FOR TENDER	2025-09-19

HRH Behavioural Unit

2111 Finch Ave W., North York, ON
M3N 1N1

**POWER & SYSTEMS -
DEMOLITION PLAN**

PROJECT NUMBER: HC-25-054

DATE: MAY 30, 2025

SCALE: As indicated

SHEET NUMBER:

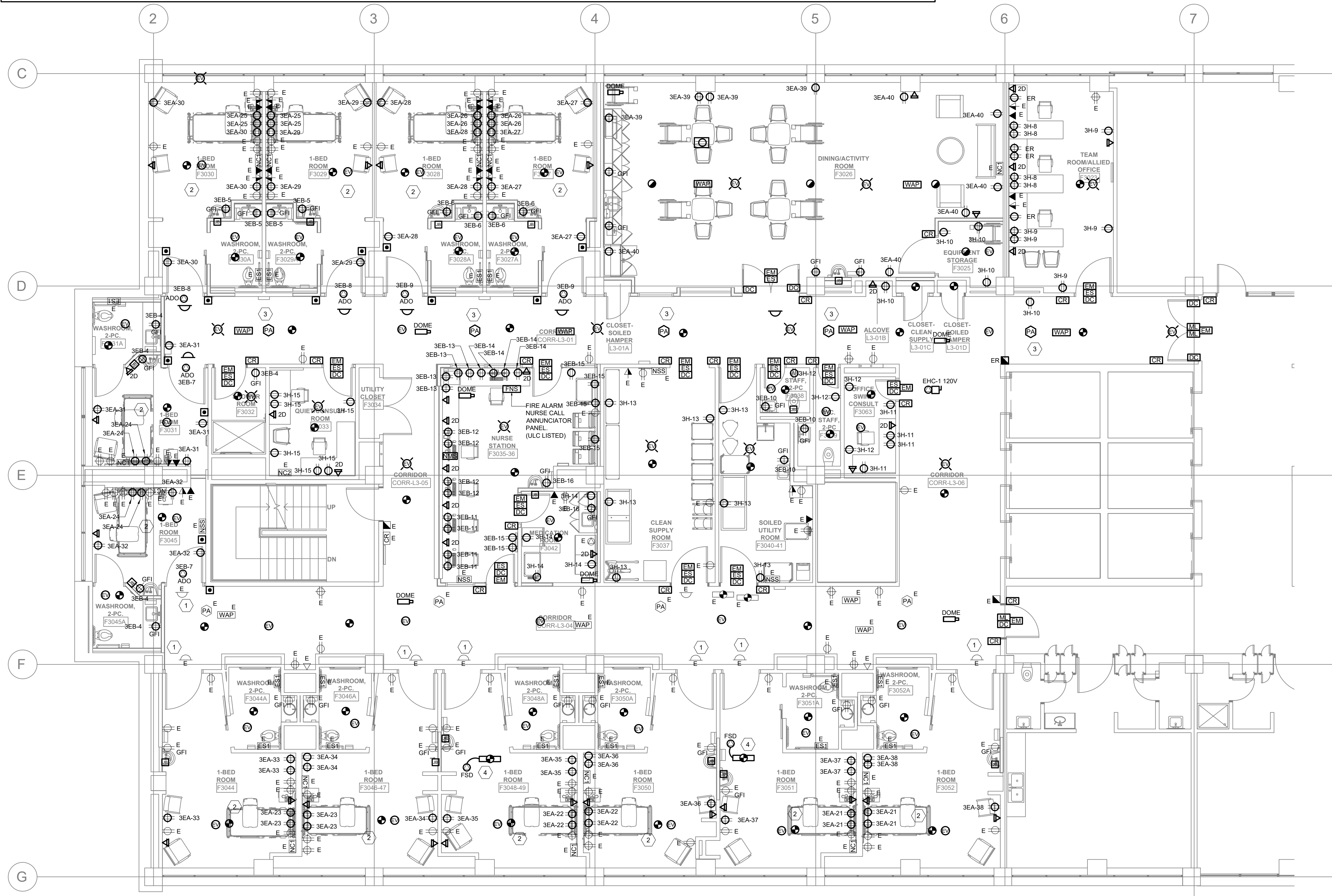
E-300

NOTES - POWER AND SYSTEMS NEW WORK

- 1 COMPLY WITH THE ONTARIO ELECTRICAL SAFETY CODE, CSA-Z32 AND THE ONTARIO BUILDING CODE. SUBMIT FINAL INSPECTION CERTIFICATE UPON COMPLETION OF WORK TO OWNER.
- 2 ELECTRICAL DRAWINGS SHALL BE READ IN CONJUNCTION WITH ARCHITECTURAL, MECHANICAL, STRUCTURAL AND EQUIPMENT VENDOR DRAWINGS. SUBSEQUENTLY ELECTRICAL CONTRACTOR SHALL COORDINATE WITH ALL SUB-TRADES AND EQUIPMENT VENDOR.
- 3 PROVIDE LAMACOID IDENTIFICATION NAMEPLATES FOR ALL EQUIPMENT, FEEDERS, DISCONNECTS, LIGHT SWITCHES AND HOSPITAL GRADE RECEPTACLES.
- 4 ALL ELECTRICAL SERVICES SHALL COMPLY WITH CSA-Z32 STANDARDS.
- 5 NEW FIRE ALARM DEVICES SHALL BE COMPATIBLE WITH AND ADDED TO THE EXISTING SYSTEM (EDWARDS).
- 6 ALL WIRING AND CONDUIT FOR EXISTING ELECTRICAL EQUIPMENT BEING REMOVED MUST BE CAPPED OFF UNLESS SPECIFICALLY DESIGNATED FOR REUSE, RELOCATION, OR REINSTALLATION, OR PRIOR WRITTEN APPROVAL HAS BEEN RECEIVED FROM CONSULTANT. ALL REDUNDANT CABLING SHALL BE REMOVED FROM SPACE.
- 7 PROVIDE FIRE STOP TO ALL NEW AND EXISTING PENETRATION WITHIN THE PROJECT SCOPE AREA.
- 8 REUSE EXISTING BACKBOX, WIRING, AND CONDUIT WHERE SUITABLE.
- 9 ALL EXISTING EQUIPMENT TO REMAIN FUNCTIONAL.
- 10 SITE VERIFY EXISTING DEVICES BEFORE STARTING ANY WORK. CONTRACTOR SHALL ENSURE THAT EXISTING SERVICES THAT SERVE AREAS OUTSIDE OF SCOPE ARE DIVERTED OR AVOIDED DURING CONSTRUCTION.
- 11 NOT ALL EXISTING EQUIPMENT IS SHOWN ON THIS LAYOUT. EXISTING EQUIPMENT TO REMAIN UNLESS OTHERWISE REQUESTED BY PROJECT ADMINISTRATOR OR SHOWN ON THE DRAWING.

KEYNOTES - POWER AND SYSTEMS NEW WORK

- 1 "WASHROOM IN USE" LIGHT. EXISTING TO REMAIN.
- 2 SMOKE DETECTORS IN BEDROOMS SHALL ANNUNCIATE AT THE NURSE CALL DOME LIGHT OUTSIDE THE BEDROOMS, THE EXISTING NURSE CALL ZONE LIGHT IN THE CORRIDOR AND THE NURSE CALL MASTER STATION.
- 3 ALL NEW PUBLIC ADDRESS SPEAKERS ARE TO BE CONNECTED TO THE EXISTING PUBLIC ADDRESS ZONE. PROVIDE AND EXTEND WIRING AS REQUIRED.
- 4 DUCT SMOKE DETECTOR C/W ANNUNCIATOR TO INITIATE FSD UPON DUCT SMOKE DETECTION. REFER TO MECHANICAL DRAWINGS FOR DETAILS.
- 5 CONTRACTOR SHALL PROVIDE GFI BREAKERS FOR ALL CIRCUITS THAT FEED NON GFI RECEPTACLES.
- 6 IN ADDITION TO WHAT IS SHOWN ON THE DRAWINGS, CONTRACTOR SHALL PROVIDE FOR REPLACING 25 EXISTING RECEPTACLES AS INSTRUCTED BY END USER DURING CONSTRUCTION. FURTHERMORE, PROVIDE FOR ADDING 12 CIRCUITS/RECEPTACLES AS INSTRUCTED BY END USER.



1 E-350 POWER & SYSTEMS - NEW WORK PLAN
SCALE: 1:75



C& Partners Architects Inc.
720 Bathurst St. Toronto, ON M5R 2S4
T 416-825-7910
E info@candpartnersinc.com
W www.candpartnersinc.com



STAMP

NO.	DESCRIPTION	DATE
1	ISSUED FOR PERMIT	2025-06-25
2	RE-ISSUED FOR PERMIT	2025-09-12
3	ISSUED FOR TENDER	2025-09-19

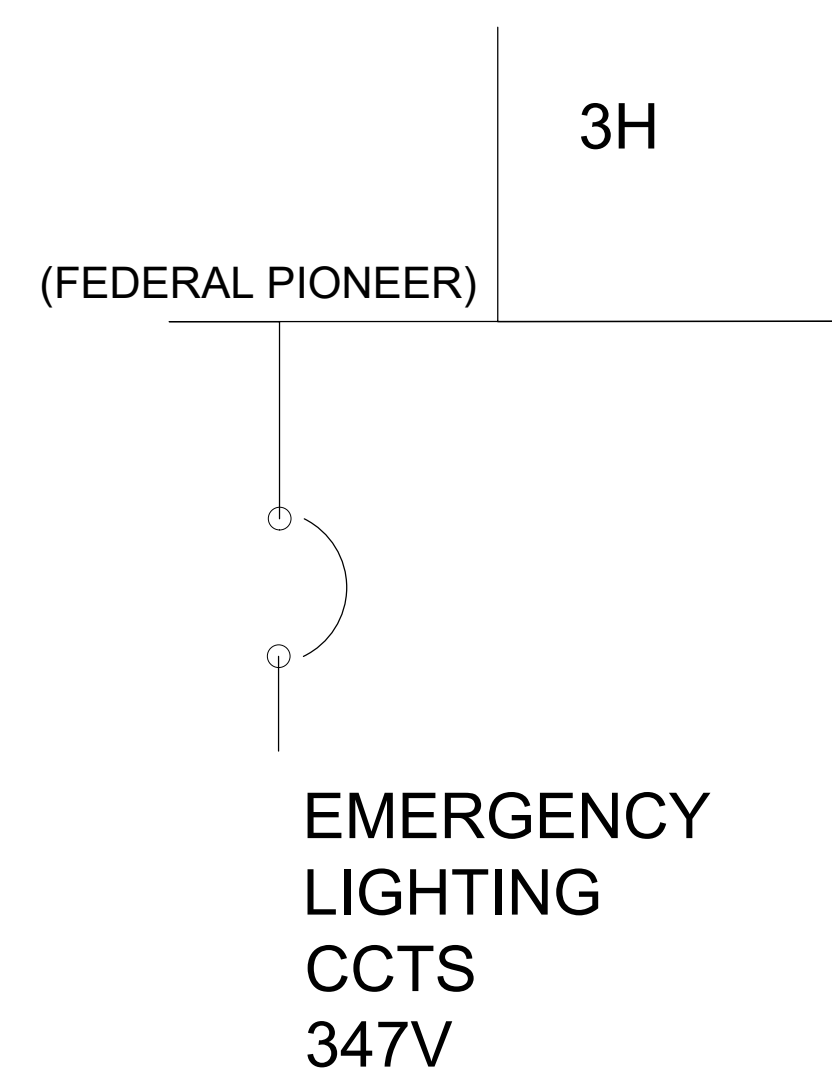
HRH Behavioural Unit

2111 Finch Ave W., North York, ON
M3N 1N1

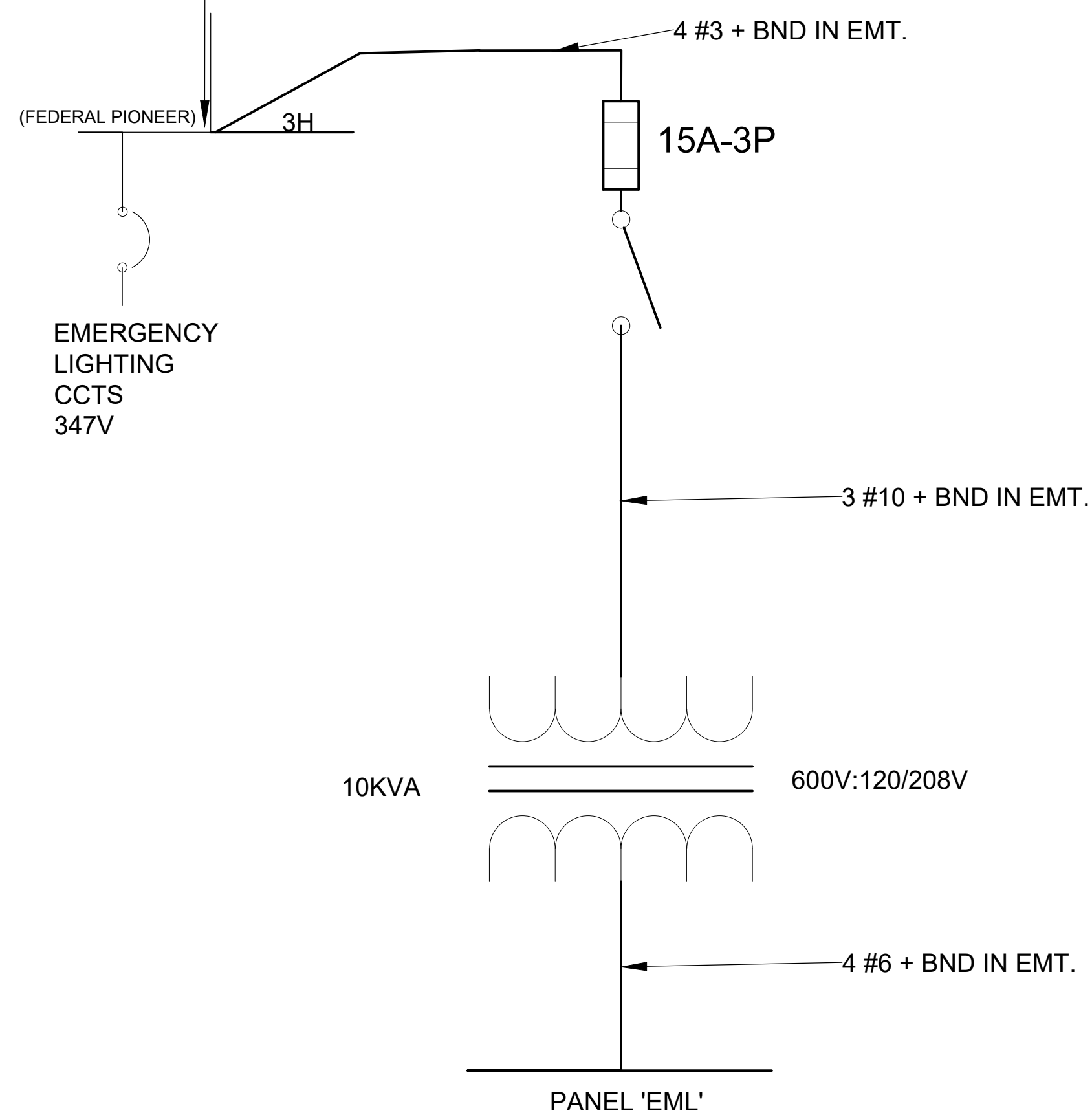
POWER & SYSTEMS - NEW WORK PLAN

PROJECT NUMBER: HC-25-054
DATE: MAY 30, 2025
SCALE: As indicated
SHEET NUMBER:

E-350



PROVIDE NEW LUG EXTENDERS AS REQUIRED OR RECONFIGURE THE 347V BREAKER TO INSTALL NEW 15A-3P BREAKER (FEDERAL PIONEER). ALTERNATIVELY PROVIDE 225A SPLITTER PANEL.



NOTE: WORK TO BE CARRIED OUT IN THE WEEKEND. POWER SHUT DOWN IS REQUIRED



250 ROWNTREE DAIRY RD, WOODBRIDGE, ON
TEL: 905-507-0800
WEB: WWW.QUASARCG.COM

C& Partners Architects Inc.

720 Bathurst st. Toronto, ON M5R 2S4
T 416-825-7910
E info@candpartnersinc.com
W www.candpartnersinc.com



STAMP

NO.	DESCRIPTION	DATE
1	ISSUED FOR PERMIT	2025-06-25
2	RE-ISSUED FOR PERMIT	2025-09-12
3	ISSUED FOR TENDER	2025-09-19

HRH Behavioural Unit

2111 Finch Ave W., North York, ON
M3N 1N1

SINGLE LINE DIAGRAM

PROJECT NUMBER: HC-25-054

DATE: MAY 30, 2025

SCALE: As indicated

SHEET NUMBER:

E-700

1 EXISTING EMERGENCY LIGHTING FEEDER
SCALE: N.T.S.

2 PROPOSED EMERGENCY LIGHTING FEEDER
SCALE: N.T.S.

26 06 20.16 - ELECTRICAL PANELBOARD SCHEDULE												
PANEL ID: EML			VOLTS: 120/208V			LOCATION: ELECTRICAL ROOM						
MAIN BUS:			PHASE: 3			FED FROM:						
MAIN BREAKER: 120/3P			WIRE: 4			FEEDER ENTRY AT:						
TYPE: 1			MOUNTING: SURFACE			FEEDER:						
INTERRUPTING CAPACITY:			ENCLOSURE RATING:			REMARKS:						
CKT	DESCRIPTION	WATTAGE			BRK R	Ø	BRK R	WATTAGE			DESCRIPTION	CKT
		ØA	ØB	ØC				ØA	ØB	ØC		
1	EMERGENCY LIGHTING - CORRIDOR	-	-	-	15A	A	15A	-	-	-	EMERGENCY LIGHTING - BEDROOMS	2
3	SPARE	-	-	-	15A	B	15A	-	-	-	SPARE	4
5	SPARE	-	-	-	20A	C	20A	-	-	-	SPARE	6
7		-	-	-		A		-	-	-		8
9		-	-	-		B		-	-	-		10
11		-	-	-		C		-	-	-		12
13		-	-	-		A		-	-	-		14
15		-	-	-		B		-	-	-		16
17		-	-	-		C		-	-	-		18
19		-	-	-		A		-	-	-		20
21		-	-	-		B		-	-	-		22
23		-	-	-		C		-	-	-		24

TOTAL ØA: ___ W, TOTAL ØB: ___ W, TOTAL ØC: ___ W

NOTES:
 * - PROVIDE LOCKABLE BREAKER
 ** - PROVIDE GFI TYPE BREAKER
 *** - COORDINATE EXACT BREAKER SIZE WITH EQUIPMENT SHOP DRAWINGS
 R - RECEPTACLE
 L - LIGHTING
 CIRCUIT NUMBERS ARE GIVEN FOR GROUPING ONLY. SITE VERIFY AVAILABLE CIRCUIT BREAKER SPACES IN PANELS DURING TENDER WALKTHROUGH.

SCHEDULE 26 06 50.16 - LIGHTING FIXTURE SCHEDULE										
SYMBOL	TYPE	DESCRIPTION	BASIS OF DESIGN MANUFACTURER SEE NOTE 1	BASIS OF DESIGN CAT NO. SEE NOTE 1	VOLTAGE	INPUT WATTS	LUMEN PACKAGE (4000 K CCT UNLESS NOTED OTHERWISE) MINIMUM 90 CRI	MOUNTING & ACCESSORIES	REMARKS	
⊙	A1	SPECIFICATION GRADE 152MM (6" NOMINAL) ROUND APERTURE RECESSED LED DOWNLIGHT CW 90CRI, WIDE BEAM DISTRIBUTION AND 0-10V DIMMING FOR DRYWALL CEILING	PRESCOLITE LTR-6RD-H.ML25L-DM1_LTR-6RD-T-ML35KMDSS_LTR-6RD-CE-WT		120V	28W	2394 LUMEN 3500K 90CRI	RECESSED		
⊙	A2	SPECIFICATION GRADE 152MM (6" NOMINAL) ROUND APERTURE RECESSED LED DOWNLIGHT CW 90CRI, WIDE BEAM DISTRIBUTION AND 0-10V DIMMING FOR DRYWALL CEILING	PRESCOLITE LTR-6RD-H.ML20L-DM1_LTR-6RD-T-ML35KMDSS_LTR-6RD-CE-WT		120V	22W	1909 LUMEN 3500K 90CRI	RECESSED		
⊙	A3	SPECIFICATION GRADE 152MM (6" NOMINAL) ROUND APERTURE RECESSED LED DOWNLIGHT CW 90CRI, WIDE BEAM DISTRIBUTION AND 0-10V DIMMING FOR DRYWALL CEILING	PRESCOLITE LTR-6RD-H.SL15L-DM1_LTR-6RD-T-SL35KMDSS_LTR-6RD-CE-WT		120V	18W	1432 LUMEN 3500K 90CRI	RECESSED		
□	L1	DUO MED AMBIENT ONLY STANDARD	AMICO SOLAR SERIES DUO MED AMBIENT LED LIGHT		120V	35W	3191 LUMEN 3500K 90CRI	SURFACE		
□	L2	DUO MED EXAM ONLY HIGH	AMICO SOLAR SERIES DUO MED AMBIENT LED LIGHT		120V	63W	6353 LUMEN 3500K 90CRI	SURFACE		
□	L3	LED 1X4 TROFFER	PEERLESS ELECTRIC PEERLUX SERIES: LACH3-14G-30-40K-12		120V	27W	3041 LUMEN 4000K 90CRI	SURFACE		
□	L4	LED 2X4 TROFFER	AMICO SOLAR SERIES 2X4 ECLIPSE AMBIENT LED LIGHT. LFL MOD FOR CUSTOM LUMEN OUTPUT OF 5000 PLUS 10%LLF		120V	82W	8292 LUMEN 3500K 90CRI	SURFACE		
⊠		EXTRUDED ALUMINUM PICTOGRAM EXIT SIGN, UNIVERSAL MOUNTING, FACTORY WHITE FINISH	EMERGLITE - EA SERIES			3W LED		CEILING OR WALL SURFACE		

LIGHTING FIXTURE SCHEDULE NOTES:
 1. UNLESS NOTED OTHERWISE, ACCEPTED ALTERNATE MANUFACTURERS AND SUPPLIERS: ACUITY BRANDS LIGHTING, COOPER LIGHTING SOLUTIONS, CREE CANADA, SIGNIFY (FORMERLY PHILIPS LIGHTING), VISCORVISIONEERING.
 2. WHERE AN INCOMPLETE MODEL/CAT NO. IS LISTED, MANUFACTURERS/SUPPLIERS MUST CONFIRM THE PROPOSED FIXTURE WITH THE CONSULTANT A MINIMUM OF ONE WEEK PRIOR TO TENDER CLOSE.
 3. SUBMIT SHOP DRAWINGS FOR CONSULTANT'S REVIEW PRIOR TO PLACING ANY ORDER.
 4. CONTRACTOR TO SELECT COLOUR TEMPERATURE ONSITE AS PER OWNER'S PREFERENCE.

26 06 20.16 - ELECTRICAL PANELBOARD SCHEDULE												
PANEL ID: LP-3A			VOLTS: 120/208V			LOCATION: CLOSET						
MAIN BUS:			PHASE: 3			FED FROM:						
MAIN BREAKER: 225/3P			WIRE: 4			FEEDER ENTRY AT:						
TYPE: 1			MOUNTING: SURFACE			FEEDER:						
INTERRUPTING CAPACITY:			ENCLOSURE RATING:			REMARKS:						
CKT	DESCRIPTION	WATTAGE			BRK R	Ø	BRK R	WATTAGE			DESCRIPTION	CKT
		ØA	ØB	ØC				ØA	ØB	ØC		
1	REC-325/324 BEDROOM	600	-	-	15A	A	15A	1200	-	-	REC-CORRIDOR L3-01.L3-04	2
3	REC-PRINTER	-	240	-	15A	B	15A	-	1440	-	REC-HSP	4
5	REC-326/327 BEDROOM	-	-	1320	15A	C	15A	-	-	1320	REC-328/329 BEDROOM	6
7	PWR-ADO	2200	-	-	20A	A	15A	1440	-	-	REC-TEAM ROOM	8
9	REC-NURSE STATION	-	1440	-	15A	B	15A	-	960	-	REC-NURSE STATION	10
11	REC-NURSE STATION	-	-	1200	15A	C	15A	-	-	240	REC-FRIDGE	12
13	REC-PRINTER	240	-	-	20A	A	15A	240	-	-	REC-YANKER	14
15	REC-HSP	-	720	-	20A	B	20A	-	1440	-	REC-HSP	16
17	REC-TEAM RM, EQ STORAGE, UTILITY RM	-	-	1440	15A	C	20A	-	-	240	REC-PRINTER	18
19	REC-OFFICE SWING	960	-	-	15A	A	20A	1440	-	-	REC-HSP	20
21	REC-QUIET ROOM	-	960	-	15A	B	15A	-	1440	-	REC-SUPPLY RM, URILRY RM, NURSE STATION, CONSULT RM	22
23	LIGHT - BEDROOMS 3029/3030	-	-	0	15A	C	15A	-	-	0	LIGHT - BEDROOMS 3027/3028	24
25	LIGHT - BEDROOMS 3046A/3031	0	-	-	15A	A	15A	0	-	-	LIGHT - DINING/OFFICE	26
27	LIGHT - NURSE/CLEAN/SOIL	-	0	-	15A	B	15A	-	0	-	LIGHT - CORRIDOR	28
29	LIGHT - CORRIDOR	-	-	0	15A	C	15A	-	-	0	SPARE	30
31	SPARE	0	-	-	15A	A	20A	0	-	-	SPARE	32
33	SPARE	-	0	-	20A	B		-	0	-		34
35		-	-	0		C		-	-	0		36
37		0	-	-		A		0	-	-		38
39		-	0	-		B		-	0	-		40
41		-	-	0		C		-	-	0		42

TOTAL ØA: ___ W, TOTAL ØB: ___ W, TOTAL ØC: ___ W

NOTES:
 * - PROVIDE LOCKABLE BREAKER
 ** - PROVIDE GFI TYPE BREAKER
 *** - COORDINATE EXACT BREAKER SIZE WITH EQUIPMENT SHOP DRAWINGS
 R - RECEPTACLE
 L - LIGHTING
 CIRCUIT NUMBERS ARE GIVEN FOR GROUPING ONLY. SITE VERIFY AVAILABLE CIRCUIT BREAKER SPACES IN PANELS DURING TENDER WALKTHROUGH.

26 06 20.16 - ELECTRICAL PANELBOARD SCHEDULE												
PANEL ID: 3H			VOLTS: 120/208V			LOCATION: ELECTRICAL ROOM						
MAIN BUS:			PHASE: 3			FED FROM:						
MAIN BREAKER: 225/3P			WIRE: 4			FEEDER ENTRY AT: [TOP] [BOTTOM]						
TYPE: 1			MOUNTING: RECESSED			FEEDER:						
INTERRUPTING CAPACITY:			ENCLOSURE RATING:			REMARKS:						
CKT	DESCRIPTION	WATTAGE			BRK R	Ø	BRK R	WATTAGE			DESCRIPTION	CKT
		ØA	ØB	ØC				ØA	ØB	ØC		
1	REC-ICE MAKER	240	-	-	20A	A	15A	0	-	-	REC DINNING/ACTIVITY ROOM 3026	2
3	REC DINNING/ACTIVITY ROOM 3026	-	1440	-	15A	B	15A	-	0	-	REC-YANKER	4
5	MECH-JB	-	-	1080	15A	C	15	-	-	0	REC-323/323/321/320/319/318 MTR	6
7	MECH-JB	720	-	-	15A	A	15A	0	-	-	REC - TEAM ROOM	8
9	REC - TEAM ROOM	-	0	-	15A	B	15A	-	0	-	REC - STORAGE	10
11	REC - SWING CONSULT	-	-	0	15A	C	15A	-	-	0	REC - WC STAFF	12
13	REC - CLEAN/SOIL	0	-	-	15A	A	15A	0	-	-	REC - MEDICATION	14
15	REC - QUIET CONSULT	-	0	-	15A	B	15A	-	0	-	SPARE	16
17	SPARE	-	-	0	15A	C	20A	-	-	0	SPARE	18
19	SPARE	0	-	-	20A	A		0	-	-		20
21		-	0	-		B		-	0	-		22
23		-	-	0		C		-	-	0		24
25		0	-	-		A		0	-	-		26
27		-	0	-		B		-	0	-		28
29		-	-	0		C		-	-	0		30
31		0	-	-		A		0	-	-		32
33		-	0	-		B		-	0	-		34
35		-	-	0		C		-	-	0		36
37		0	-	-		A		0	-	-		38
39		-	0	-		B		-	0	-		40
41		-	-	0		C		-	-	0		42

TOTAL ØA: ___ W, TOTAL ØB: ___ W, TOTAL ØC: ___ W

NOTES:
 * - PROVIDE LOCKABLE BREAKER
 ** - PROVIDE GFI TYPE BREAKER
 *** - COORDINATE EXACT BREAKER SIZE WITH EQUIPMENT SHOP DRAWINGS
 R - RECEPTACLE
 L - LIGHTING
 CIRCUIT NUMBERS ARE GIVEN FOR GROUPING ONLY. SITE VERIFY AVAILABLE CIRCUIT BREAKER SPACES IN PANELS DURING TENDER WALKTHROUGH.

26 06 20.16 - ELECTRICAL PANELBOARD SCHEDULE												
PANEL ID: 3EA			VOLTS: 120/208V			LOCATION: ELECTRICAL ROOM						
MAIN BUS:			PHASE: 3			FED FROM:						
MAIN BREAKER: 225/3P			WIRE: 4			FEEDER ENTRY AT:						
TYPE: 1			MOUNTING: RECESSED			FEEDER:						
INTERRUPTING CAPACITY:			ENCLOSURE RATING:			REMARKS:						
CKT	DESCRIPTION	WATTAGE			BRK R	Ø	BRK R	WATTAGE			DESCRIPTION	CKT
		ØA	ØB	ØC				ØA	ØB	ØC		
1	BED-326/327 BEDROOM	480	-	-	15A	A	15A	480	-	-	BED-328/329 BED ROOM	2
3	BED-325/324 ROOM	-	480	-	15A	B	15A	-	240	-	REC-FRIDGE	4
5	REC-NURSE STATION	-	-	960	15A	C	15A	-	-	960	REC-326 BED ROOM	6
7	REC-327 BEDROOM	960	-	-	15A	A	15A	960	-	-	REC-328 BED ROOM	8
9	REC-329 BEDROOM	-	960	-	15A	B	15A	-	720	-	REC-325 BED ROOM	10
11	BED 323/322 BEDROOM	-	-	480	15A	C	15A	-	-	480	BED-321/320 BEDROOM	12
13	BED 319/318 BEDROOM	480	-	-	15A	A	15A	720	-	-	REC-323 BEDROOM	14
15	REC-322 BEDROOM	-	720	-	15A	B	15A	-	720	-	REC-321 BEDROOM	16
17	REC-320 BEDROOM	-	-	720	15A	C	15A	-	-	720	REC-318 BEDROOM	18
19	REC-319 BEDROOM	720	-	-	15A	A	15A	480	-	-	REC-324 BEDROOM	20
21	BED - 3051/3052 BEDROOM	-	0	-	15A	B	15A	-	0	-	BED - 3048-49/3050 BEDROOM	22
23	BED - 3044/3046-47 BEDROOM	-	-	0	15A	C	15A	-	-	0	BED - 3031/3045 BEDROOM	24
25	BED - 3029/3030 BEDROOM	0	-	-	15A	A	15A	0	-	-	BED - 3027/3028 BEDROOM	26
27	REC - 3027 BEDROOM	-	0	-	15A	B	15A	-	0	-	REC - 3028 BEDROOM	28
29	REC - 3029 BEDROOM	-	-	0	15A	C	15A	-	-	0	REC - 3030 BEDROOM	30
31	REC - 3031 BEDROOM	0	-	-	15A	A	15A	0	-	-	REC - 3045 BEDROOM	32
33	REC - 3044 BEDROOM	-	0	-	15A	B	15A	-	0	-	REC - 3046-47 BEDROOM	34
35	REC - 3048-49 BEDROOM	-	-	0	15A	C	15A	-	-	0	REC - 3050 BEDROOM	36
37	REC - 3051 BEDROOM	0	-	-	15A	A	15A	0	-	-	REC - 3052 BEDROOM	38
39	REC - DINING	-	0	-	15A	B	15A	-	0	-	REC - DINING	40
41	SPARE	-	-	0	15A	C	20A	-	-	0	SPARE	42

TOTAL ØA: ___ W, TOTAL ØB: ___ W, TOTAL ØC: ___ W

NOTES:
 * - PROVIDE LOCKABLE BREAKER
 ** - PROVIDE GFI TYPE BREAKER
 *** - COORDINATE EXACT BREAKER SIZE WITH EQUIPMENT SHOP DRAWINGS
 R - RECEPTACLE
 L - LIGHTING
 CIRCUIT NUMBERS ARE GIVEN FOR GROUPING ONLY. SITE VERIFY AVAILABLE CIRCUIT BREAKER SPACES IN PANELS DURING TENDER WALKTHROUGH.

26 06 20.16 - ELECTRICAL PANELBOARD SCHEDULE												
PANEL ID: 3EB			VOLTS: 120/208V			LOCATION: ELECTRICAL ROOM						
MAIN BUS:			PHASE: 3			FED FROM:						
MAIN BREAKER: 225/3P			WIRE: 4			FEEDER ENTRY AT:						
TYPE: 1			MOUNTING: RECESSED			FEEDER:						
INTERRUPTING CAPACITY:			ENCLOSURE RATING:			REMARKS:						
CKT	DESCRIPTION	WATTAGE			BRK R	Ø	BRK R	WATTAGE			DESCRIPTION	CKT

CCTV SYSTEM GENERAL NOTES

1. PROVIDE RACK-MOUNTED DIGITAL (IP) CCTV SYSTEM INCLUDING, BUT NOT LIMITED TO, CCTV CAMERAS (FIXED & PAN TILT ZOOM), HD NETWORK VIDEO RECORDERS, SERVER AND NETWORK SWITCHES, CONTROL SOFTWARE, LICENSES, PAN TILT ZOOM CONSOLE, VIDEO DISPLAY SCREENS AND WORK STATIONS, POWER SUPPLIES, MOUNTING BOXES, JUNCTION BOXES, SUPPORTS, RACEWAYS, WIRING AND ACCESSORIES REQUIRED FOR A FULL FUNCTIONAL IP CCTV SYSTEM.
2. PROVIDE SYSTEM INTERGRATION (A/D CONVERTERS) AS REQUIRED FOR THE ANALOGUE CCTV SYSTEM UPGRADE TO DIGITAL. THAT IS FULLY FUNCTIONAL WITH DOWN TIME LESS THAN 6-12 HOURS. I.E SWAP OVER OF EXISTING TO IP SYSTEM SHALL BE WITHIN 6-12 HOURS DOWNTOWN TIME.
3. UPON COMMISSING THE IP CCTV SYSTEM; REMOVE REDUNDANT EQUIPMENT IN ITS ENTIRETY.
4. THE ELECTRICAL CONTRACTOR TO PROVIDE ELECTRICAL SUPPORT SERVICES AS REQUIRED BY THE CCTV SYSTEM PROVIDER.
5. FIELD AGREE ACTUAL LOCATION, MOUNTING TYPE AND HEIGHT OF CAMERAS AS DIRECTED BY THE CLIENT'S REPRESENTATIVES. (ACTUAL LOCATION TO BE AGREED ON SITE TO SUIT SITE CONDITIONS).
6. PROVIDE 120V POWER AND TRANSFORMERS FOR CCTV CAMERAS AS REQUIRED.

FIRE ALARM GENERAL NOTES

1. PROVIDE ANY NEW MONITOR MODULES, CONTROL, MODULES, RELAY MODULES, POWER SUPPLIES, AMPLIFIERS, ANNUNCIATOR/LED/SWITCH MODULES, INTERFACE/EXPANSION BOARDS, NETWORK DEVICES, CABINETS, WIRING AND ACCESSORIES THAT ARE REQUIRED TO ACCOMMODATE THE NEW DEVICES FOR A FULLY FUNCTIONAL FIRE ALARM INSTALLATION.
2. CONNECT ALL FIRE ALARM DEVICES TO THE EXISTING FIRE SYSTEM. UTILIZE DEVICES, WIRING AND CONFIGURATION THAT IS COMPATIBLE WITH THE EXISTING FIRE ALARM SYSTEM.
3. REPROGRAMMING THE EXISTING FIRE ALARM SYSTEM TO ACCOMMODATE THE NEWLY INSTALLED DEVICES.
4. REUSE EXISTING ZONES/MODIFY ZONES TO ACCOMMODATE THE NEW DEVICES
5. PROVIDE ISOLATORS MODULES AS REQUIRED WHEN PASSING THROUGH FIRE RATED ZONES (NOT SHOWN ON THIS DRAWING).
6. VERIFY BACKUP BATTERY PERFORMANCE OF EXISTING FIRE ALARM SYSTEM AFTER CONNECTING NEW DEVICES, AND REPLACING BATTERIES IF REQUIRED.
7. UPDATE ANNUNCIATOR PANEL LABELS, FIRE PLAN AND RISERS THROUGHOUT THE FACILITY TO REFLECT NEW WORKS.
8. MINIMIZE SERVICE OUTAGES. DISABLE THE SYSTEM ONLY TO MAKE SWITCHOVERS AND CONNECTIONS. SCHEDULE SERVICE OUTAGES AFTER HOURS, OUTSIDE THE FACILITIES NORMAL HOURS OF OPERATIONS. SCHEDULE OUTAGES WITH THE CLIENT'S REPRESENTATIVES AT LEAST 48 HOURS PRIOR TO THE OUTAGE.
9. PERFORM COMPLETE FIRE ALARM VERIFICATION TEST FOR THE FACILITY IN COMPLIANCE WITH CAN/ULC-S537 IN THE PRESENCE OF THE CLIENT'S REPRESENTATIVE.
10. EXISTING FIRE FIGHTERS TELEPHONE TO REMAIN.
11. REPLACE EXISTING PULL STATIONS WITH NEW AS SHOWN ON THE DRAWINGS.
12. PROVIDE FIRE ALARM RELAY MODULES FOR ALL MAGLOCKS.

ACCESS CONTROL SYSTEM GENERAL NOTES

1. PROVIDE RACK-MOUNTED ACCESS CONTROL SERVER AND NETWORK SWITCHES, SOFTWARE, LICENSES DOOR CONTROLLERS, CARD READERS, EXIT DEVICES, DOOR CONTACTS/SENSORS, POWER SUPPLIES, MOUNTING BOXES, JUNCTION BOXES, SUPPORTS, RACEWAYS, WIRING AND ACCESSORIES REQUIRED FOR A FULLY FUNCTIONAL ACCESS CONTROL SYSTEM.
2. PROVIDE POWER SUPPLIES INCLUDING POWER WIRING BACK TO THE TELECOMMUNICATIONS ROOM WHERE POE POWER IS NOT SUFFICIENT TO POWER ALL DEVICES AT A DOOR.
3. ALL DEVICES TO BE FAIL SAFE THAT DO NOT REQUIRE ELECTRICAL OR ELECTRONIC COMPONENTS TO OPERATE FOR EGRESS.
4. FIELD PROGRAM ACCESS CONTROL SYSTEM SCHEDULES AND USER ACCOUNTS AS DIRECTED BY THE CLIENT REPRESENTATIVE.
5. AUTOMATIC DOOR OPERATORS TO BE LOW POWER TYPE WITH PUSH BUTTONS ON BOTH SIDES OF THE DOOR.
6. PROVIDE DOOR CONTACTS TO MONITOR DOOR POSITION FOR EVERY ACCESS CONTROLLED DOOR.
7. PROVIDE PUSH BUTTON ON BOTH SIDES OF THE DOOR EQUIPPED WITH AUTOMATIC DOOR OPERATOR (ADO) FOR ENTRANCE/EXIT. INTERCONNECT ADO WITH CARD READER (WHERE APPLICABLE) FOR GRANTING ACCESS; SUCH THAT DOOR AUTOMATICALLY OPENS.

NURSE CALL SYSTEM GENERAL NOTES

1. Existing Nurse Call System is ASCOM TELLIGENCE. Tel: xxxxx Electrical Contractor shall coordinate with nurse call vendor and provide a fully functional nurse call system for this project



250 ROWNTREE DAIRY RD, WOODBRIDGE, ON
 TEL: 905-507-0800
 WEB: WWW.QUASARCG.COM

C& Partners Architects Inc.

720 Bathurst st. Toronto, ON M5R 2S4
 T 416-825-7910
 E info@candpartnersinc.com
 W www.candpartnersinc.com



STAMP

NO.	DESCRIPTION	DATE
1	ISSUED FOR PERMIT	2025-06-25
2	RE-ISSUED FOR PERMIT	2025-09-12
3	ISSUED FOR TENDER	2025-09-19

HRH Behavioural Unit

2111 Finch Ave W., North York, ON
 M3N 1N1

ELECTRICAL NOTES

PROJECT NUMBER: HC-25-054

DATE: MAY 30, 2025

SCALE: As indicated

SHEET NUMBER:

E-901