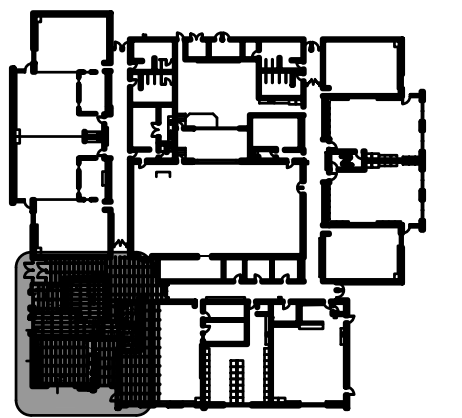
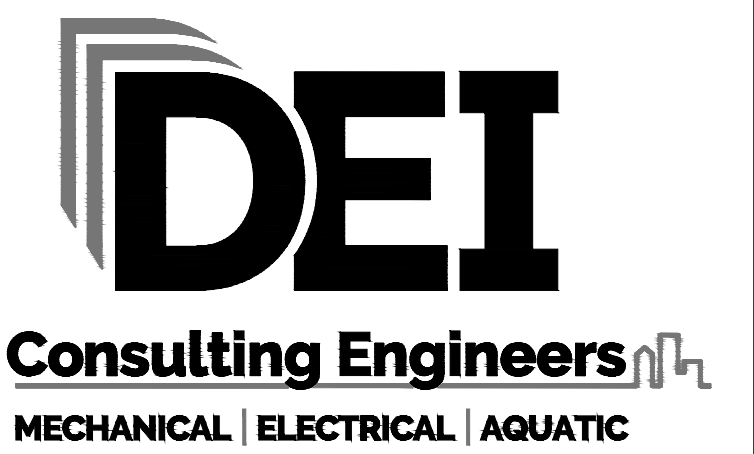




Professional Engineers
Ontario
Limited Engineering License
Name: D.G. MCCONKEY
Number: 100230476
Limitations: Detailed design, reporting, and specifications for all building electrical systems, site servicing and review of conformity for these systems in new and renovation construction.
Association of Professional Engineers of Ontario



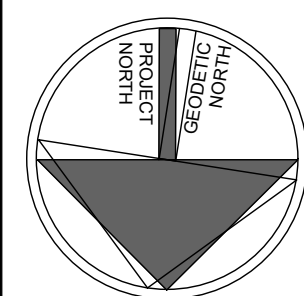
KEY PLAN



55 Northland Road, Waterloo, ON N2V 1Y8
Phone: 519-725-3555
Website: deiassociates.ca
Project Number: 25450

The contractor shall verify all dimensions and report all errors and discrepancies to the Consultant before commencement of the work.
The drawings show general arrangement of services. Follow as closely as actual building construction will permit. Obtain approval for relocation of service from Consultant before commencement of the work.
The drawings do not indicate all offsets fitting and accessories which may be required. Provide the same to meet the required conditions.
Drawings and specifications, etc., prepared and issued by the Consultant are the property of the Consultant and must be returned at the completion of the project. These documents are not to be duplicated or copied without the consent of the Consultant.
Do not scale this drawing.
© 2026 DEI Consulting Engineers Inc.

no.	revision	date
1	Issue	2026.04.02
2	Issued for Permit & Tender	



project
TRILLIUM JUNIOR PUBLIC SCHOOL INTERIOR RENOVATIONS
WATERLOO REGION DISTRICT SCHOOL BOARD

79 Laurentian Dr. Kitchener, ON N2E 1C3
drawing
PARTIAL GROUND FLOOR DEMOLITION AND RENOVATION PLANS AND NOTES

Drawing scale
AS NOTED
ward99 project number
25022 - WRDSB TRILLIUM PS

ward99 architects drawing no.
Wa RD.
ward99 architects inc.
2500 Highway 07, Unit 27B
Vaughan ON L4H 0J2
info@ward99.com
416 613 5860 www.ward99.com

E2.1

GENERAL DEMOLITION NOTES

- 'ER' DENOTES EXISTING ITEM TO REMAIN.
- EXISTING ELECTRICAL EQUIPMENT NOT SHOWN SHALL REMAIN UNLESS NOTED OTHERWISE.
- 'R' INDICATES EXISTING ITEM TO BE RELOCATED. REFER TO RENOVATION DRAWINGS AND RELOCATE DEVICE AND WIRING TO SUIT. UNLESS OTHERWISE NOTED.
- 'D' INDICATES EXISTING ITEM TO BE DELETED. UNLESS OTHERWISE NOTED DISCONNECT AND REMOVE NOTED DEVICE AND WIRING BACK TO SOURCE.
- ALL LIGHTING FIXTURES BEING RELOCATED SHALL BE CLEANED AND CHECKED PRIOR TO BEING REINSTALLED.
- ALL REDUNDANT / OBSOLETE CONDUITS, BACKBOXES AND FEEDS ABOVE CEILING ARE TO BE REMOVED AS PART OF TENDER PRICE.
- EXISTING HEAT DETECTORS ARE TO BE DISCONNECTED AND REMOVED COMPLETE AND RELOCATED TO FACILITATE NEW CEILING INSTALLATION. MAINTAIN WIRING FOR RECONNECTION AND RELOCATION AS PER RENOVATION PLANS.

SPECIFIC DEMOLITION NOTES

- D1 EXISTING DATA RACKS AND ASSOCIATED RECEPTACLE TO BE DISCONNECTED AND REMOVED COMPLETE. ALL HORIZONTAL CABLING, PATCH CORDS, AND ASSOCIATED CONDUITS/CABLE MANAGEMENT TO BE PULLED BACK AND MADE SAFE FOR CONSTRUCTION. DATA RACKS ARE TO BE STORED SAFELY ON SITE OR HANDED OVER TO THE SCHOOL BOARD UNTIL THE FINAL RELOCATION LOCATION IS CONFIRMED. CONTRACTOR TO MAINTAIN SUFFICIENT SLACK AND IDENTIFICATION OF ALL CABLING FOR RECONNECTION AT THE FINAL LOCATION. PROVIDE RE-TERMINATION AND TESTING OF ALL AFFECTED DATA CIRCUITS UPON REINSTALLATION.
- D2 EXISTING EXHAUST FAN TO BE REMOVED COMPLETE.
- D3 INDICATES EXISTING HARDWIRED CLOCK.

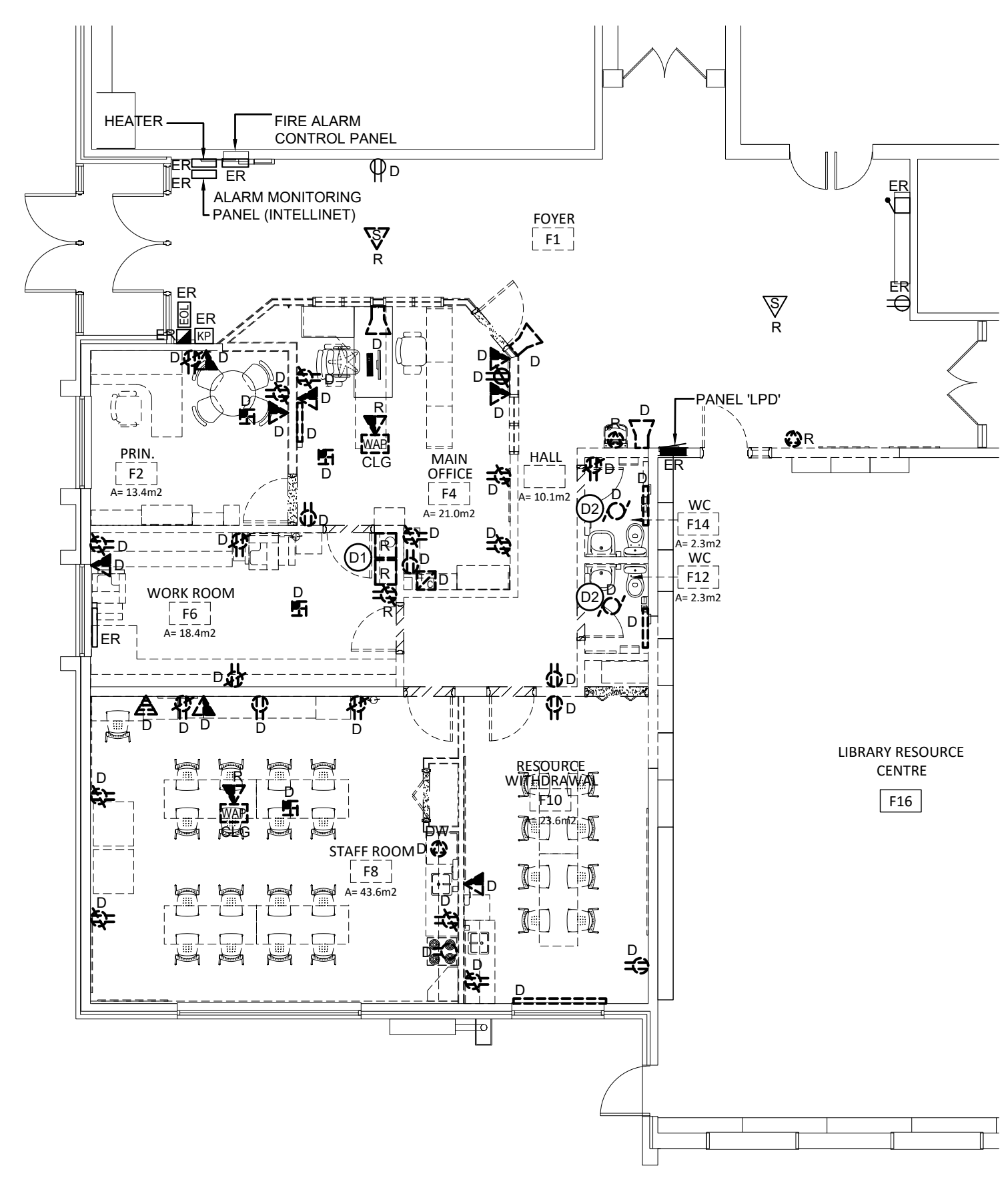
GENERAL RENOVATION NOTES

- 'ER' INDICATES EXISTING ITEM TO REMAIN.
- 'R' INDICATES EXISTING ITEM IN RELOCATED POSITION.
- ALL DEVICES SHOWN ARE NEW UNLESS OTHERWISE NOTED.
- EXISTING ELECTRICAL EQUIPMENT NOT SHOWN SHALL REMAIN UNLESS OTHERWISE NOTED.
- MAINTAIN SERVICE TO ALL EXISTING DEVICES TO REMAIN.
- REVISE PANEL DIRECTORIES TO SUIT CHANGES (TYPED).
- ELECTRICAL ROUGH-INS SHOULD BE INSTALLED STAGGERED WHEN IN SAME STUD CAVITY TO REDUCE SOUND TRANSFER AND ALL BACK-UP BOXES TO BE ACOUSTICALLY TREATED (WRAPPED) TO PREVENT SOUND TRANSFER.

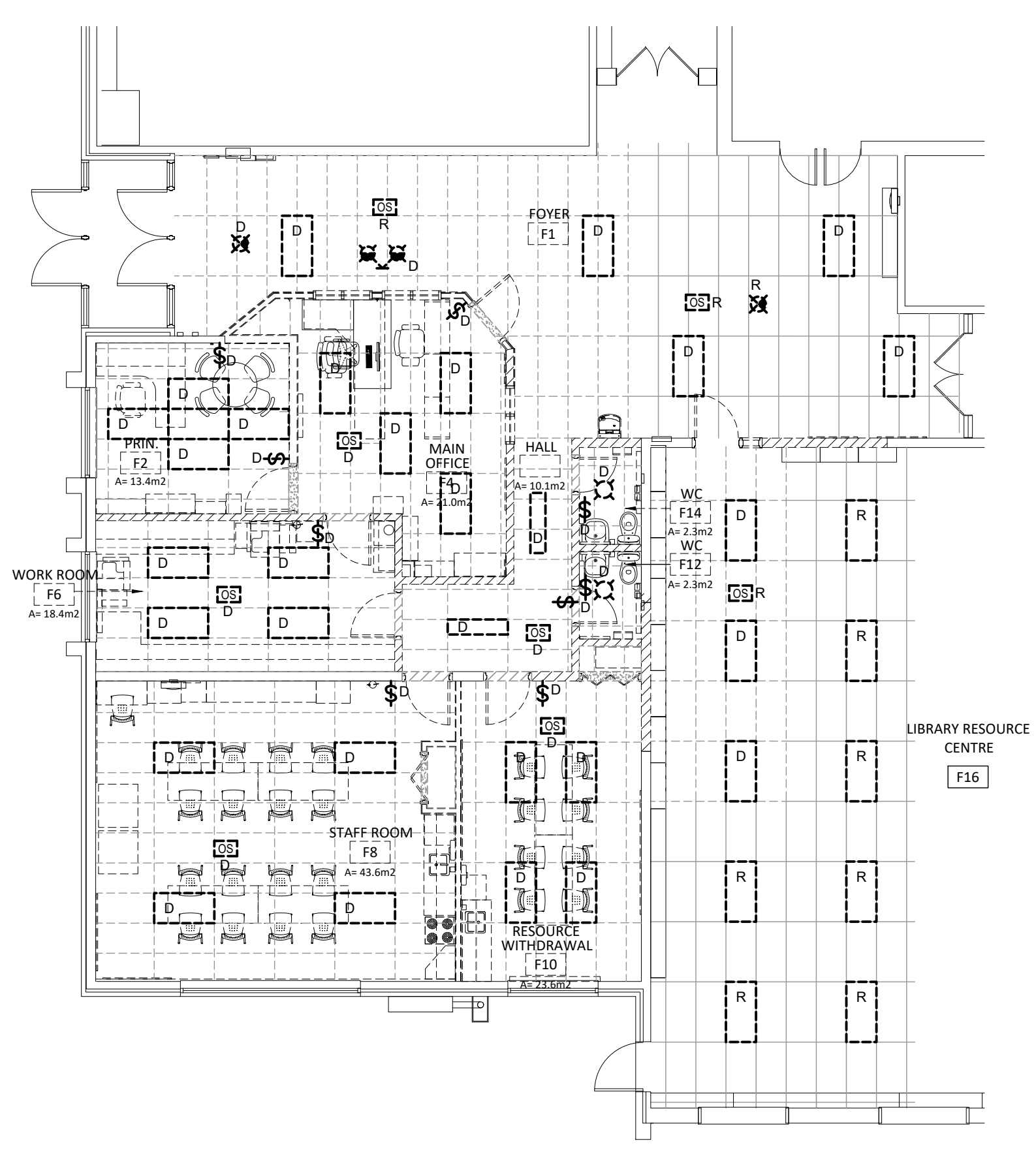
SPECIFIC RENOVATION NOTES

- R1 INDICATES RECEPTACLE FOR OWNER'S MICROWAVE. CONFIRM EXACT LOCATION/MOUNTING HEIGHT WITH ARCHITECTURAL ELEVATIONS AND MILLWORK SHOP DRAWINGS.
- R2 INDICATED DEVICE FOR OWNER FRIDGE. CONFIRM EXACT LOCATION/MOUNTING HEIGHT ON SITE PRIOR TO ROUGH-IN.
- R3 INDICATES EMERGENCY FIXTURES TO BE CONNECTED TO UNSWITCHED SIDE OF LOCAL LIGHTING CIRCUIT. PROVIDE ADEQUATE SUPPORT FOR ALL CEILING MOUNTED FIXTURES.
- R4 INDICATES NEW LOCATION OF RELOCATED EXISTING DRINKING FOUNTAIN.
- R5 INDICATES NEW FIRE ALARM SIGNAL DEVICE TO BE CONNECTED TO NEW SIGNAL CIRCUIT. REFER TO FIRE ALARM RISER AND SPECIFICATIONS FOR FURTHER INFORMATION.
- R6 INDICATES 120V POWER AND FIRE ALARM CONNECTIONS TO SMOKE/FIRE DAMPER WITH INTEGRAL SMOKE DETECTOR. REFER TO FIRE ALARM SPECIFICATIONS. COORDINATE EXACT LOCATION/CONNECTION REQUIREMENTS WITH MECHANICAL CONTRACTOR. SMOKE/FIRE DAMPER AND ASSOCIATED INTEGRAL SMOKE DETECTOR TO BE PROVIDED AND INSTALLED BY MECHANICAL CONTRACTOR. PROVIDE MONITORING MODULE(S) PER SMOKE/FIRE DAMPER TO 120V POWER SUPPLY CONNECTION TO THE DAMPER ACTUATOR, AND INTEGRAL SMOKE DETECTOR ALARM AS SIGNAL. A TROUBLE CONDITION SHALL BE ACTIVATED DUE TO THE LOSS OF AC POWER AT THE MAIN CONTROL PANEL, CONSISTING OF AUDIBLE AND VISUAL TROUBLE SIGNAL UNTIL ACKNOWLEDGED BY OPERATOR. SUPPLY AND INSTALL REMOTE TROUBLE RELAYS AT EACH FIRE SMOKE DAMPER FOR VISUAL INDICATION OF TROUBLE.
- R7 INDICATES NEW LOCATION OF HARDWIRED CLOCK ABOVE ELECTRICAL PANEL. COORDINATE FINAL HEIGHT WITH ARCHITECT PRIOR TO ROUGH-IN.
- R8 INDICATES NEW LOCATION OF DATA RACKS AND ASSOCIATED RECEPTACLE.
- R9 INDICATES EXIT SIGNS TO BE WIRED AND CONNECTED TO EXISTING EXIT SIGN CIRCUIT.
- R10 INDICATES POWER AND DATA IN MILLWORK. FEED DOWN WITHIN WINDOW MULLION AND INTO MILLWORK.
- R11 INDICATES ROUGH-INS FOR DEDICATED OUTLETS FOR PUBLIC ADDRESS EQUIPMENT CABINET. CONFIRM EXACT LOCATION PRIOR TO ROUGH-IN AND PROVIDE ROUGH-IN AS 150mmx150mm BACK BOX CW COVER PLATE AND GROMMETTED OPENING AND 3-35mm² CABLE MANAGEMENT SYSTEM.
- R12 INDICATES WASHROOM EXHAUST FANS TO BE CONTROLLED WITH OCCUPANCY SENSOR PER EQUIPMENT WIRING SCHEDULE.
- R13 INDICATED RECEPTACLE AND DATA OUTLET TO BE MOUNTED AT 150mm AFF.

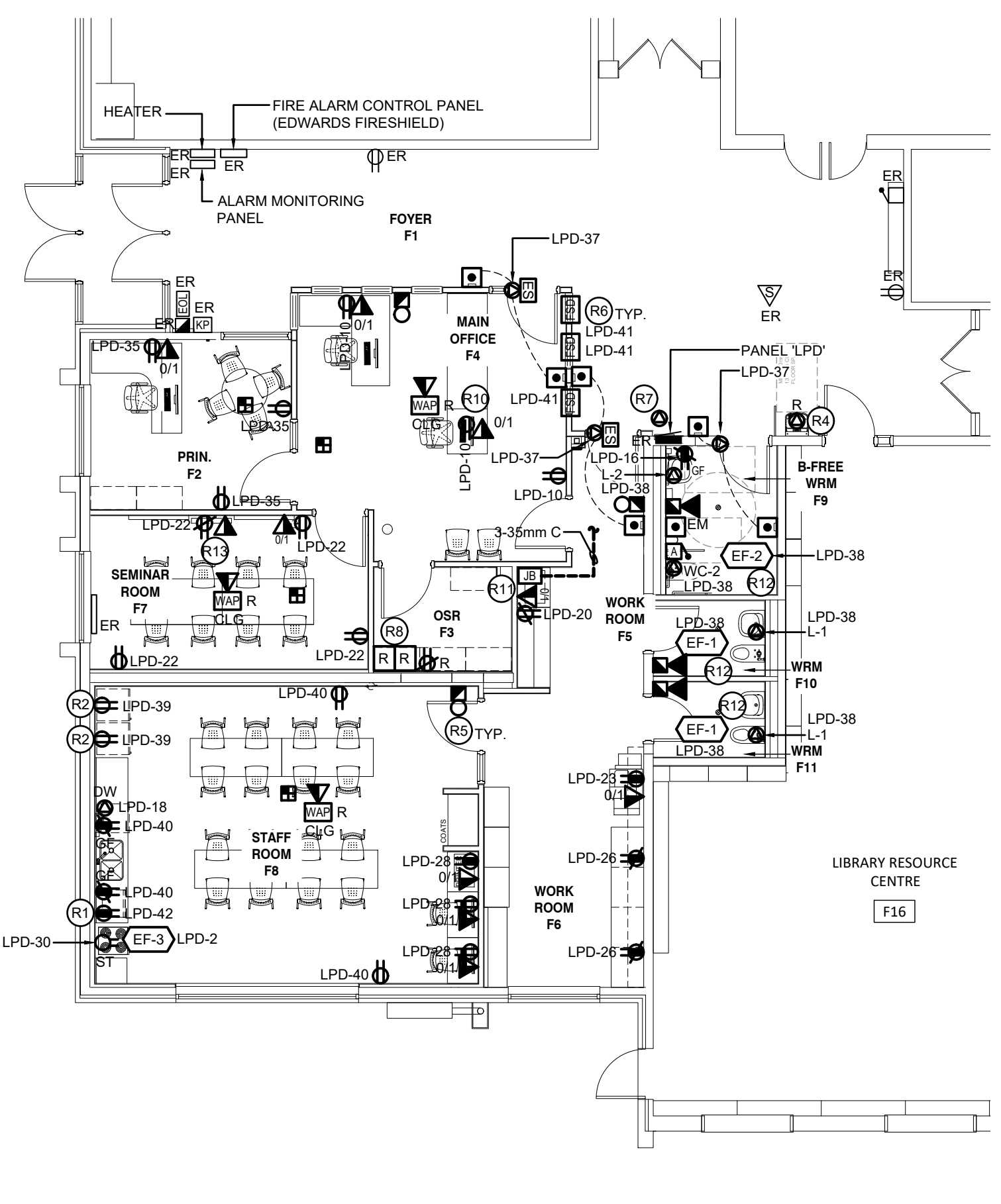
CIRCUIT LABELLING
PROVIDE P-TOUCH LABELS INDICATES PANEL AND CIRCUIT LABEL ON ALL LIGHT SWITCHES, LIGHTING CONTROL STATIONS, AND RECEPTACLE DEVICE FACEPLATES. INCLUDE SWITCH LEG INDICATION FOR LIGHTING CONTROLS AND SWITCHES. REFER TO SPECIFICATION AND DETAILS.



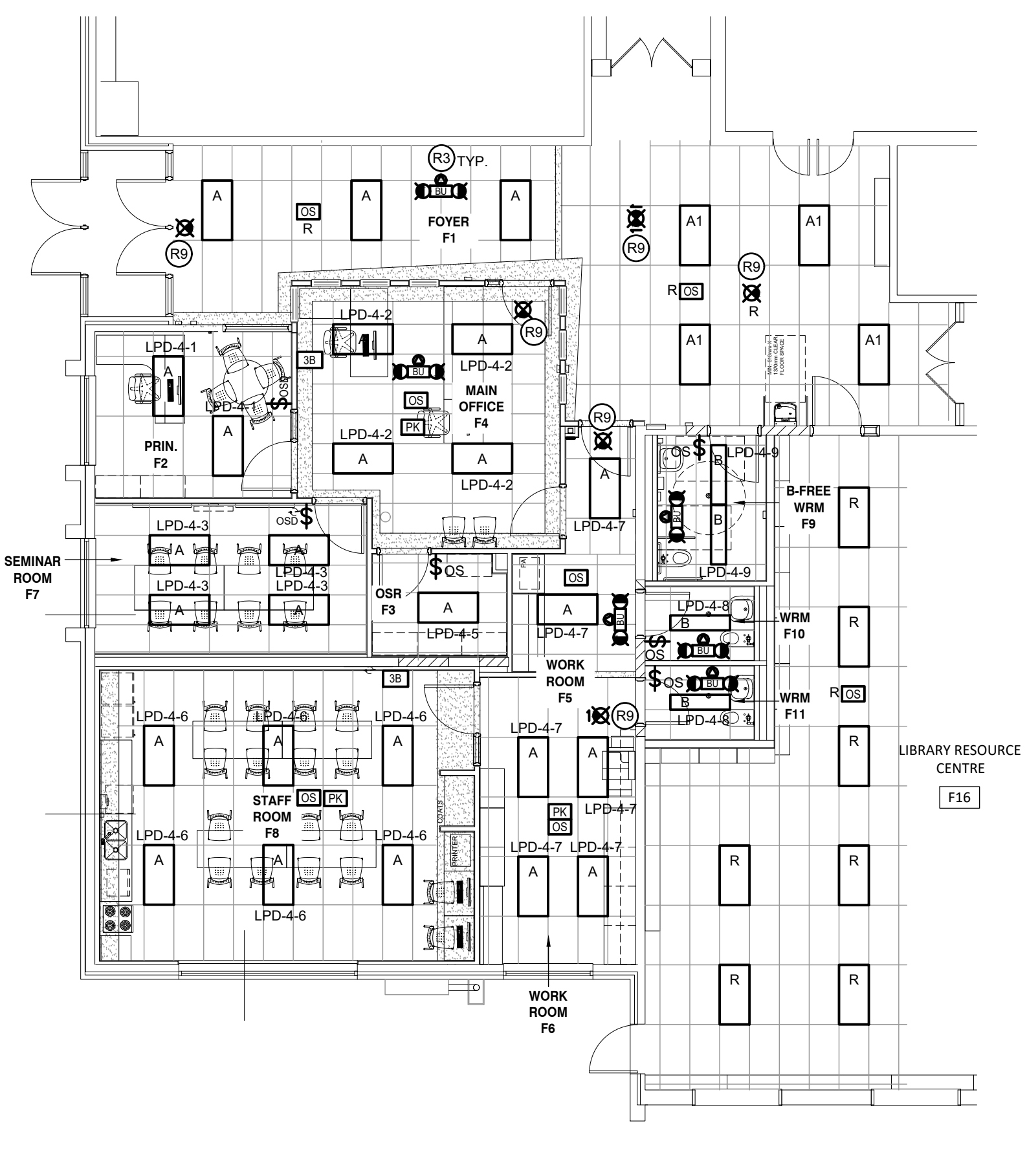
PARTIAL GROUND FLOOR POWER AND SYSTEMS PLAN - DEMOLITION
SCALE: 1:100



PARTIAL GROUND FLOOR LIGHTING PLAN - DEMOLITION
SCALE: 1:100



PARTIAL GROUND FLOOR POWER AND SYSTEMS PLAN - RENOVATION
SCALE: 1:100



PARTIAL GROUND FLOOR LIGHTING PLAN - RENOVATION
SCALE: 1:100